

PPG ENVIROCRON[®] EXTREME PROTECTION EDGE

Extreme corrosion protection
in one-coat powder with superior
sharp edge coverage

Protects edges with just one-coat

PPG Envirocron Extreme Protection Edge is an advanced powder coating system that delivers superior protection in extreme environments – even for sharp edges, louvers, blades, mesh and other vulnerable, hard-to-cover features. And it does it in one-coat, not two ... saving time, money and labor.

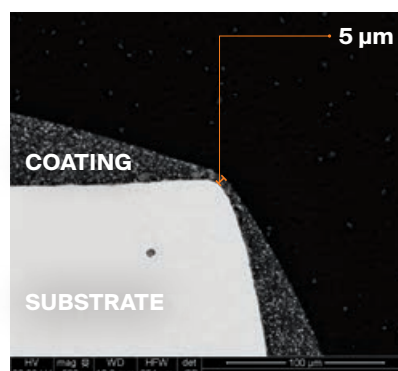
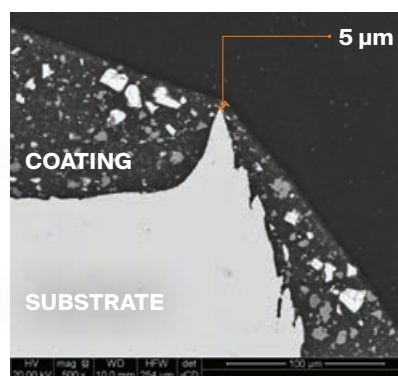
A valuable
competitive
edge for your
business

By eliminating the primer booth and oven, *PPG Envirocron Extreme Protection Edge* provides energy and material savings. However, this exceptional edge protection goes beyond the convenience and savings that come with a one-coat application. It also has increased longevity in the field and first-pass transfer efficiency so less powder is needed, delivering savings in the long run.

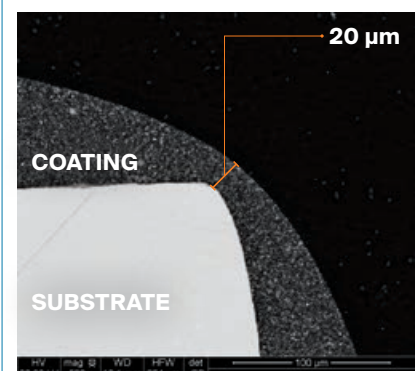
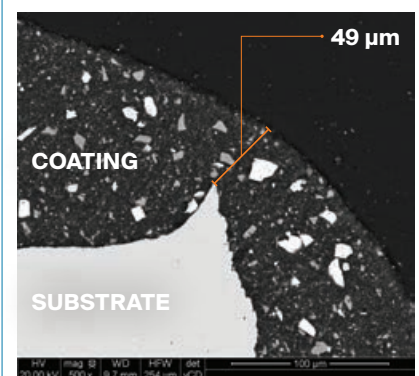
Proof it protects in one-coat

Images show the superior edge protection provided by *PPG Envirocron Extreme Protection Edge* as compared to conventional DTM powder. These SEM (scanning electron microscope) cross-sectional images show a significant increase in film build on the edges.

Conventional DTM Powder



PPG Envirocron Extreme Protection Edge





Technical Properties

Property	Test Method	Value
Color	—	Multiple
Gloss	ASTM D-523-94	50 - 95 @ 60°
Adhesion	ASTM D-3359-97	100% (5B Pass)
Hardness	ASTM D-3363-92	H Pencil (Eagle)
Impact Resistance	ASTM D-2794-93	120 In.-lbs. Direct 80 In.-lbs. Reverse
Conical Mandrel	ASTM D-522-93	1/8" Mandrel - No Cracking
Salt Spray	ASTM B-117-97	1000 Hrs. Pass <1/8" Scribe Creep - No Blisters Minimal corrosion on sharp edges
Humidity	ASTM D-2247-99	1000 Hrs. Pass <1/16" Scribe Creep - No Blisters

The edge against conventional powder coating systems

- 20+ micron edge coverage for superior corrosion protection
- Eliminates the labor, energy and disposal costs of primer
- Lower cost per square foot of painted metal
- Eliminates the need for edge rounding or blasting
- Higher first-pass transfer efficiency and reduced total powder usage
- Color consistency across the part, especially on edges
- Increased worker safety with no sharp edges to handle



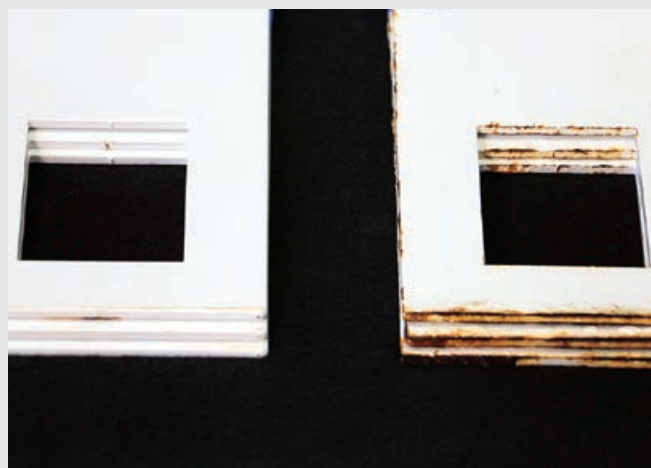
www.ppgindustrialcoatings.com | ic-emea@ppg.com

The PPG Logo is a registered trademark and *Envirocron* and *We protect and beautify the world* are trademarks of PPG Industries Ohio, Inc. ©2023 PPG Industries, Inc. All rights reserved. 10/23 IC306

40 Cycles of Cyclic Corrosion Testing



This image of laser-cut edges highlights the edge corrosion performance of a standard DTM powder coating (top 3 panels) versus PPG's High Edge DTM powder (bottom 3 panels) after 40 cycles of cyclic corrosion testing as per SAE J2334.



This image of laser-cut edges highlights the edge corrosion performance of a standard DTM powder coating (3 panels on the right) versus PPG's High Edge powder (3 panels on the left) after 40 cycles of cyclic corrosion testing as per SAE J2334.



We protect and beautify the world®