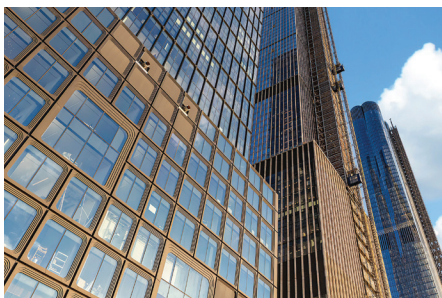


Protective powder solutions for every architectural application



Solutions for all three FGIA/AAMA performance specifications

PPG's full line of advanced powder coatings offers a combination of performance and value for virtually any architectural application. From colorful, premium coatings for high-end storefronts to hard-working, value-oriented coatings for window frames and handrails, our powder coatings set the industry standard for durability, lasting beauty and exceptional finishes.



FGIA/AAMA 2605: HIGH-PERFORMANCE COMMERCIAL EXTERIOR

PPG CORAFLO[®] Platinum FEVE fluoropolymer powder

As the next leap forward in FEVE technology, patent-pending *Coraflo* Platinum powder delivers better corrosion protection in a single coat and 20% higher transfer efficiency than traditional FEVE powders. It also offers an expanded 5-85 gloss range and specialty effects previously unavailable using this technology.

USES: Engineered architectural extrusions and monumental applications



FGIA/AAMA 2604: LIGHT COMMERCIAL

PPG ENVIROCRON[®] HTE 04 ultradurable polyester powder

This ultradurable powder shares a polyester formulation with *Envirocron* HTE 03 powder, but offers a tougher, more robust resin and pigment system. In addition to the excellent durability and impact/mar resistance, it offers waste-saving first-pass transfer efficiency up to 85%, along with a wide range of colors, glosses and effects.

USES: High-traffic environments such as schools, hospitals and retail stores; highly exposed architectural elements



FGIA/AAMA 2603: RESIDENTIAL AND INTERIOR

PPG ENVIROCRON[®] HTE 03 durable polyester powder

Sharing the same high transfer efficiency and aesthetic options as *Envirocron* HTE 04 powder, this durable powder delivers good film integrity, impact/mar resistance and color control.

USES: Window and door frames, railings, trim and other interior applications



We protect and beautify the world[®]

PPG FGIA/AAMA powder coating lineup

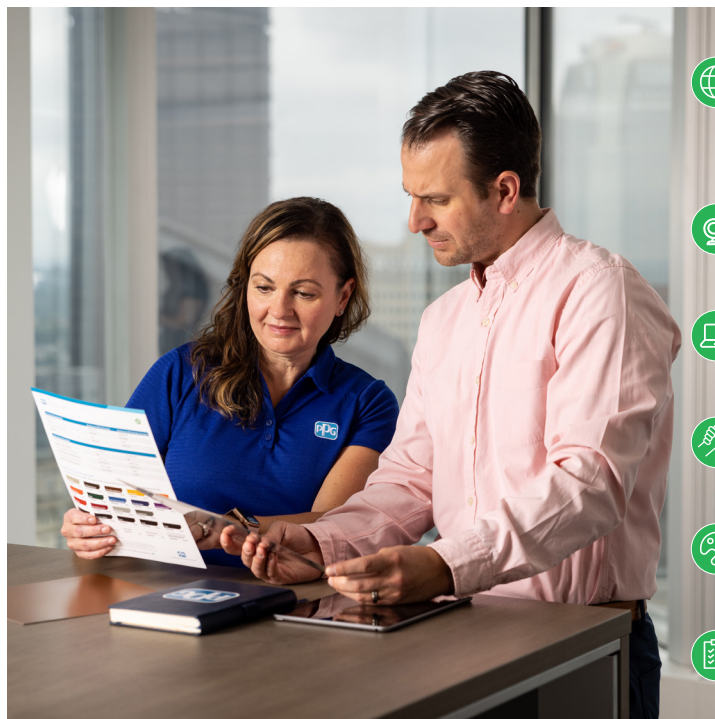


Product Characteristics	Coraflo Platinum	Envirocron HTE 04	Envirocron HTE 03
FGIA/AAMA Specification	2605	2604	2603
Resin	FEVE	Ultradurable Polyester	Polyester
Coating Layers	One coat	One coat	One coat
High Transfer Efficiency	Yes	Yes	Yes
Gloss Range at 60° (ASTM D523)	5-85	15-95	15-95
Warranty*	20 years	10 years	5 years
Seacoast Application**	Yes	Yes†	Yes†
South Florida Weathering**	10 years	5 years	1 year
Humidity Resistance**	4,000 hours	3,000 hours	1,500 hours
Cyclic Fog/Dry Test (ASTM G85 Annex 5)**	4,000 hours	1,500 hours	1,000 hours
Salt Spray Resistance (ASTM B117)	4,000 hours	3,000 hours	1,500 hours

* Warranties are the responsibility of the coating's applicator.

** Tested to FGIA/AAMA specifications.

† A separate primer is required.



A reliable partner



Global footprint

Our network of over 50 industrial coatings manufacturing facilities and 40 laboratories worldwide ensure products and services when you need them



Coatings innovator

We develop groundbreaking, sustainable coatings solutions by investing nearly 3% of annual sales into R&D



Buy powder online at ppgpowder.com

We offer same-day shipping on 200+ products, and can produce stocked colors in batches as small as 5 pounds



Technical support

We deliver the industry's best on-demand technical, lab and testing services, including on-site troubleshooting



Color leadership

Our database houses over 100,000 custom colors – the industry's broadest collection of formulations



PPG CERTIFIED APPLICATOR™ Program

Our best-of-the-best applicator partners meet the highest level of service and expertise

This document contains general information only and should not be construed as creating any warranties, express or implied. Please contact a PPG representative for additional information.

The PPG Logo, We protect and beautify the world, Coraflo and Envirocron are registered trademarks and PPG Certified Applicator is a trademark of PPG Industries Ohio, Inc. The IN Logo is a registered trademark of LinkedIn Corporation. ©2024 PPG Industries, Inc. All rights reserved. 07/24 IC167

