

THIS DOCUMENT IS FOR REFERENCE ONLY AND IS PROPRIETARY INFORMATION BELONGING TO INTERNATIONAL FILTER PRODUCTS. UNAUTHORIZED COPIES OR USE FOR OTHER PURPOSES STRICTLY PROHIBITED.

REVISIONS

| ZONE | REV | DESCRIPTION | DATE | APPROVED |
|------|-----|--|-----------|------------|
| | 1 | SALES DRAWING | 4/23/2020 | CD Morland |
| | 2 | APPROVAL DRAWING | 6/3/2020 | CD Morland |
| | 3 | ADJUSTED NOTES & ADDED SHEET 4-6 | 6/18/2020 | CD Morland |
| | 4 | REMOVED INTERNAL PART DRAWING ADDED PAGES WITH MORE DETAIL DRAWING | 7/1/2020 | CD Morland |

NOTES:

- 1.0 ALL WETTED SURFACES: TEFLON LINED OVER 316L SS, BOLTS 316L.
- 2.0 MAX OPERATING PRESSURE: 150 PSI [10.3 BAR] @250 °F [121 °C].
- 3.0 DESIGN TEMPERATURE: 120 °F [48.9 °C]
- 4.0 FINISH EXTERIOR; ELECTRO POLISHED <32 RA
INTERIOR; LINE TEFLON
- 5.0 INLET & OUTLET PORTS: 2" 150# FLANGE
- 6.0 VENT PORTS: 1" 150# FLANGE
- 7.0 SEAL MATERIAL: MANIFOLD; TEFLON ENCAPSULATED SILICONE O-RINGS AND TOP CENTER PTFE (TEFLON) GASKET
- 8.0 FILTER TYPE USED: 222 SOE, 3.25" DIA, 20" LONG
- 9.0 FILTER MANIFOLD PLATE CAN BE REMOVED FOR CLEANING
- 10.0 VESSEL WALL THICKNESS IS 6 mm
- 11.0 TEFLON COATING THICKNESS IS 0.028" TO 0.032"
- 12.0 ELEMENT MOUNTING PLATE, RETAINER PLATE, AND TIE RODS ARE TEFLON (PTFE)
- 13.0 HYDRO-TEST IS CONDUCTED AT 200 PSI
- 14.0 ALL SWING-AWAY BOLTS (TOP CLOSURE & MANIFOLD PLATE): 7/8" (20 mm) DIAMETER
- 15.0 VOLUME: 77 L (0.077 m³)

SECTION B-B
SCALE 1 / 20

SECTION A-A
SCALE 1 / 20

International Filter Products

DRAWN
YA Zanki
CHECKED
MKC Capati
APPROVED
CD Morland

4/23/2020
6/3/2020
6/3/2020

7914 Ajay Dr.
Sun Valley, CA 91352
PHONE: 818-504-8115
FAX: 818-941-2947
email: www.internationalfilterproducts.com

TITLE

7RX20 FILTER HOUSING

UNLESS OTHERWISE SPECIFIED
DIMENSIONS ARE IN INCHES
DECIMALS FRACTIONS +/- 1/16
X +/- .030 ANGLES +/- 1/2
XX +/- .015 SURFACE ROUGHNESS 125
XXX +/- .005
CONCENTRICITIES .010 (FIM)
INTERNAL RADII .015~.030
BREAK CORNERS .005~.015

| | | | |
|-----------------|---------------|------------------------------|----------|
| SIZE A | ISOF NO | DWG NO 01-1330-26146-T316 | REV 4 |
| SCALE 1 / 20 | WEIGHT N/A | SHEET 1 OF 7 | |

4

3

2

1

THIS DOCUMENT IS FOR REFERENCE ONLY AND IS PROPRIETARY INFORMATION BELONGING TO INTERNATIONAL FILTER PRODUCTS. UNAUTHORIZED COPIES OR USE FOR OTHER PURPOSES STRICTLY PROHIBITED.

REVISIONS

| ZONE | REV | DESCRIPTION | DATE | APPROVED |
|------|-----|--|-----------|------------|
| | 1 | SALES DRAWING | 4/23/2020 | CD Morland |
| | 2 | APPROVAL DRAWING | 6/3/2020 | CD Morland |
| | 3 | ADJUSTED NOTES & ADDED SHEET 4-6 | 6/18/2020 | CD Morland |
| | 4 | REMOVED INTERNAL PART DRAWING ADDED PAGES WITH MORE DETAIL DRAWING | 7/1/2020 | CD Morland |

1" 150# FLANGE
VENT

7X SWING BOLT

2" 150# FLANGE
INLET

7X SWING BOLT

1" 150# FLANGE
GAUGE PORT

UPSTREAM DIRTY
DRAIN PORT

1" 150# FLANGE
GAUGE PORT

2" 150# FLANGE
OUTLET

1" 150# FLANGE
CLEAN DRAIN

| | |
|------------------------|-----------|
| DRAWN YA Zanki | 4/23/2020 |
| CHECKED MKC Capati | 6/3/2020 |
| APPROVED CD Morland | 6/3/2020 |

International Filter Products

7914 Ajay Dr.
Sun Valley, CA 91352

PHONE: 818-504-8115
FAX: 818-941-2947
email: www.internationalfilterproducts.com

UNLESS OTHERWISE SPECIFIED
DIMENSIONS ARE IN INCHES

| | |
|--------------|-----------------------|
| DECIMALS | FRACTIONS +/- 1/16 |
| X +/- .030 | ANGLES +/- 1/2 |
| XX +/- .015 | SURFACE ROUGHNESS 125 |
| XXX +/- .005 | |

CONCENTRICITIES .010 (FIM)
INTERNAL RADII .015~.030
BREAK CORNERS .005~.015

| | | | |
|--------------------------------------|---------------|-------------------------------------|-----------------|
| TITLE 7RX20 FILTER HOUSING | | | |
| SIZE A | ISOF NO | DWG NO 01-1330-26146-T316 | REV 4 |
| SCALE 1 / 10 | WEIGHT N/A | SHEET 2 OF 7 | |

4

3

2

1

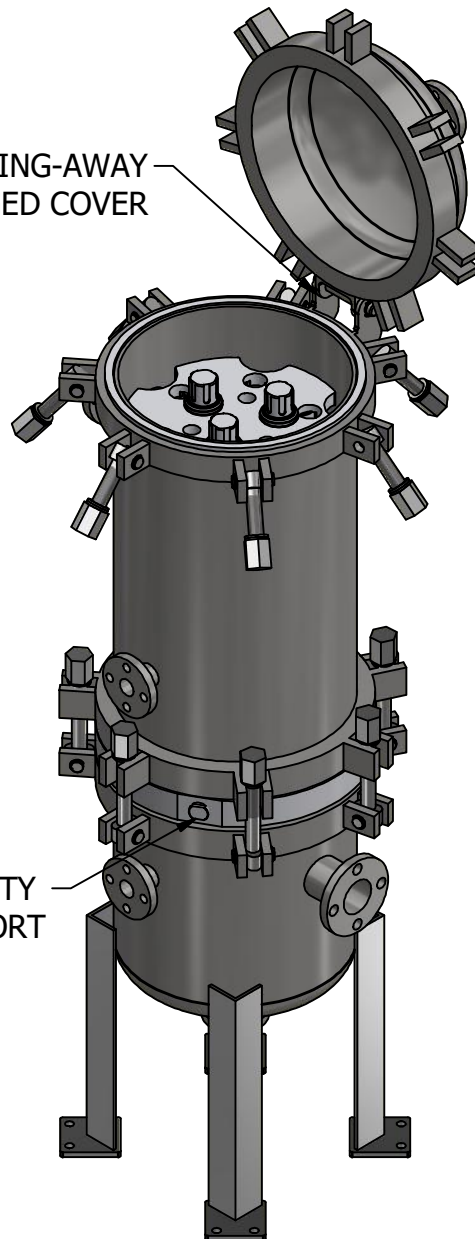
THIS DOCUMENT IS FOR REFERENCE ONLY AND IS PROPRIETARY INFORMATION BELONGING TO INTERNATIONAL FILTER PRODUCTS. UNAUTHORIZED COPIES OR USE FOR OTHER PURPOSES STRICTLY PROHIBITED.

REVISIONS

| ZONE | REV | DESCRIPTION | DATE | APPROVED |
|------|-----|--|-----------|------------|
| | 1 | SALES DRAWING | 4/23/2020 | CD Morland |
| | 2 | APPROVAL DRAWING | 6/3/2020 | CD Morland |
| | 3 | ADJUSTED NOTES & ADDED SHEET 4-6 | 6/18/2020 | CD Morland |
| | 4 | REMOVED INTERNAL PART DRAWING ADDED PAGES WITH MORE DETAIL DRAWING | 7/1/2020 | CD Morland |

SWING-AWAY
HINGED COVER

UPSTREAM DIRTY
DRAIN PORT



| | |
|------------------------|-----------|
| DRAWN YA Zanki | 4/23/2020 |
| CHECKED MKC Capati | 6/3/2020 |
| APPROVED CD Morland | 6/3/2020 |

International Filter Products

7914 Ajay Dr.
Sun Valley, CA 91352

PHONE: 818-504-8115
FAX: 818-841-2947
email: www.internationalfilterproducts.com

UNLESS OTHERWISE SPECIFIED
DIMENSIONS ARE IN INCHES

| | |
|--------------|-----------------------|
| DECIMALS | FRACTIONS +/- 1/16 |
| X +/- .030 | ANGLES +/- 1/2 |
| XX +/- .015 | SURFACE ROUGHNESS 125 |
| XXX +/- .005 | |

CONCENTRICITIES .010 (FIM)
INTERNAL RADII .015~.030
BREAK CORNERS .005~.015

| | | | |
|----------------------|---------------|------------------------------|----------|
| TITLE | | | |
| 7RX20 FILTER HOUSING | | | |
| SIZE A | ISOF NO | DWG NO 01-1330-26146-T316 | REV 4 |
| SCALE 1/10 | WEIGHT N/A | SHEET 3 OF 7 | |

4

3

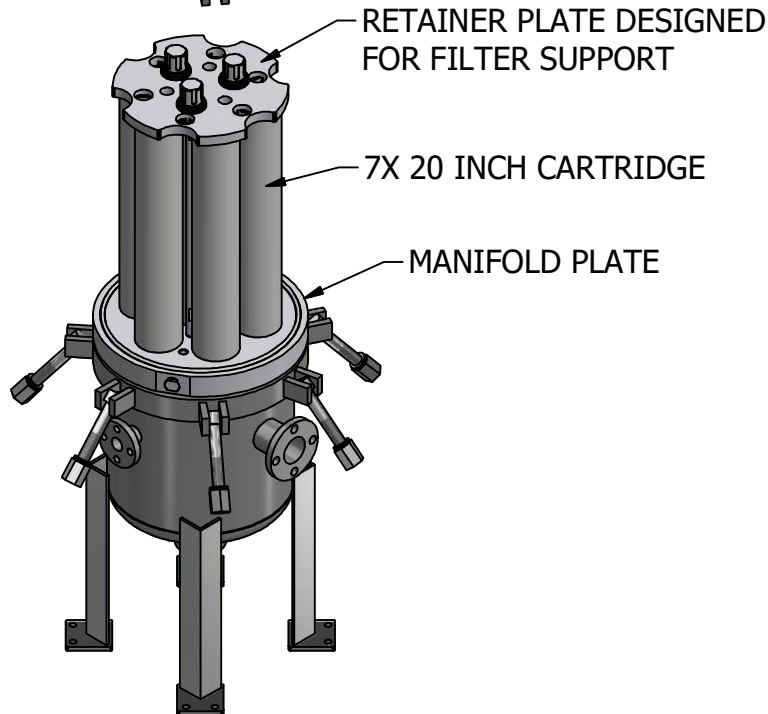
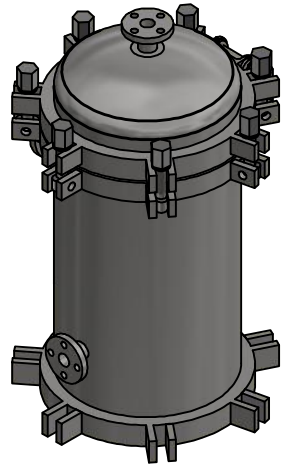
2

1

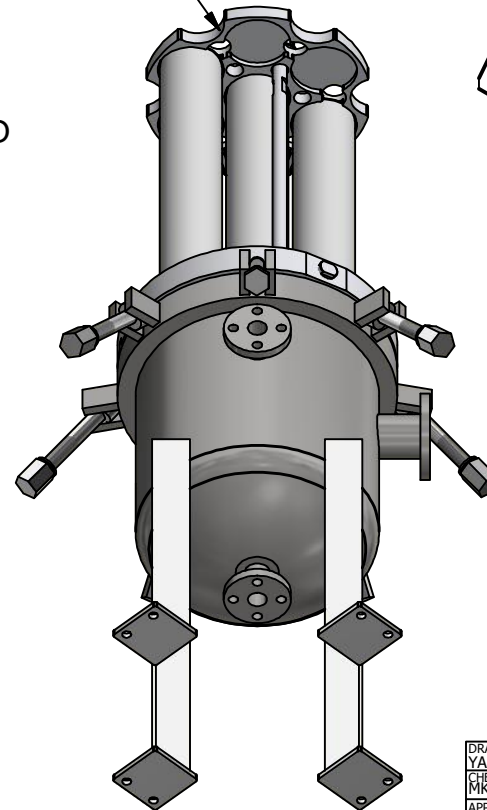
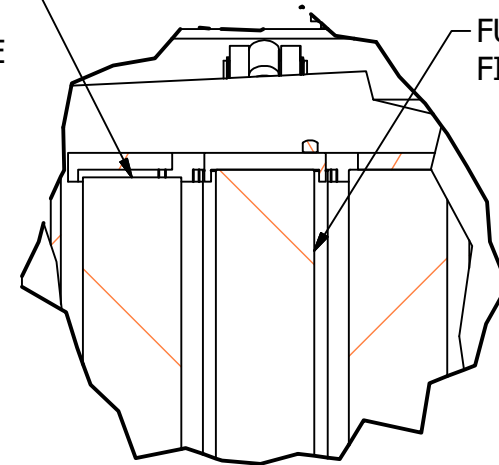
THIS DOCUMENT IS FOR REFERENCE ONLY AND IS PROPRIETARY INFORMATION BELONGING TO INTERNATIONAL FILTER PRODUCTS. UNAUTHORIZED COPIES OR USE FOR OTHER PURPOSES STRICTLY PROHIBITED.



| REVISIONS | | | | |
|-----------|-----|--|-----------|------------|
| ZONE | REV | DESCRIPTION | DATE | APPROVED |
| | 1 | SALES DRAWING | 4/23/2020 | CD Morland |
| | 2 | APPROVAL DRAWING | 6/3/2020 | CD Morland |
| | 3 | ADJUSTED NOTES & ADDED SHEET 4-6 | 6/18/2020 | CD Morland |
| | 4 | REMOVED INTERNAL PART DRAWING ADDED PAGES WITH MORE DETAIL DRAWING | 7/1/2020 | CD Morland |



FILTER INSERT

SHORTER FILTER
IS CAPTURED BY
RETAINER PLATEFULL LENGTH
FILTERDETAIL D
SCALE 1/5

| | | | | |
|---|---|---------------------------------------|---|---------------|
| DRAWN YA Zanki | 4/23/2020 | International Filter Products | | |
| CHECKED MKC Capati | 6/3/2020 | 7914 Ajay Dr. Sun Valley, CA 91352 | PHONE: 818-504-8115 FAX: 818-941-2947 email: www.internationalfilterproducts.com | |
| APPROVED CD Morland | 6/3/2020 | TITLE | | |
| UNLESS OTHERWISE SPECIFIED DIMENSIONS ARE IN INCHES | | 7RX20 FILTER HOUSING | | |
| DECIMALS X +/- .030 XX +/- .015 XXX +/- .005 | FRACTIONS +/- 1/16 ANGLES +/- 1/2 SURFACE ROUGHNESS 125 | SIZE A | ISOF NO | REV 4 |
| CONCENTRICITIES .010 (FIM) INTERNAL RADII .015~.030 BREAK CORNERS .005~.015 | | SCALE 1/60 | DWG NO 01-1330-26146-T316 | WEIGHT N/A |
| | | SHEET 4 OF 7 | | |