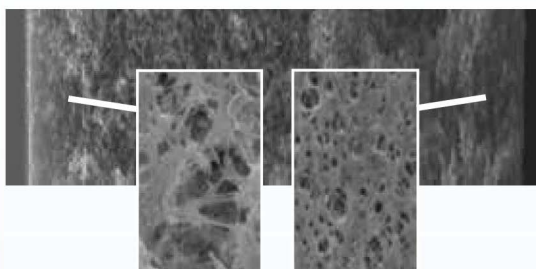




## SteriPure-B Polyethersulfone Pleated cartridge filter

» An Absolute Filter with Long Service Time and High Flow Rate



### Specifications

#### » Materials of Construction

Filter membrane	Polyethersulfone
Supports	Polypropylene
Cage/End Caps	Polypropylene
Core	Polypropylene / Polysulfone
Adaptor	Polypropylene
O-rings	Silicone/EPDM

#### » Filter Dimensions

Outer Diameter	68.5mm
Inner Diameter	33.0mm
Filtration Area	≥0.62m <sup>2</sup>

#### » Safety

Bacterial Endotoxin	≤0.25EU/ml
Extractable	≤40mg/10inches

#### » Operating Parameters

Maximum Operating Temperature	1.9bar@82°C
Maximum Differential Pressure (forward)	5.2bar@25°C
Maximum Differential Pressure (reverse)	2.1bar@25°C
Recommended replacement pressure	2.4bar

#### » Sterilizable

Autoclave	124°C, 30min. 150cycles
	134°C, 30min. 100cycles
Steam In-Place	124°C, 30min. 150cycles pressure drop ≤0.5bar
	134°C, 30min. 100cycles pressure drop ≤0.5bar

### Description

Asymmetric Polyethersulfone membrane has advantages on high-flux and high capacity. Due to reasonable structure, SteriPure-B makes full use of those advantages. SteriPure-B can provide better performance compared to similar products, while ensuring low cost.

#### » Reliability

From raw materials purchase, transport and storage to production, all operations follow ISO 9001 quality management system. SteriPure-B manufactured, tested and packaged in a cleanroom to ensure product cleanliness. SteriPure-B cartridge filters are 100% integrity tested before they go out. A validation guide for compliance with regulatory requirements is available.

#### » Compatibility

SteriPure-B cartridge filters are sealed using thermal bonding process, contain no adhesive and surfactant. The components of SteriPure-B, include of Polyethersulfone, Polypropylene and Silicone/EPDM, provide broad chemical compatibility from pH 1 to pH14 and low extractable levels at high temperature.

#### » Economy

The Optimized structure of cartridge filters can take full advantage of the excellent performance of asymmetric PES membrane. These features ensure the highest process efficiency and minimize filtration costs.

#### » Regulatory Compliance

ASTM D6394 SP0112  
FDA 21 CFR 177.1655

ISO 10993-Part 1, 5  
EN 285:2006+A2:2009  
Regulation (EC) No 1935/2004

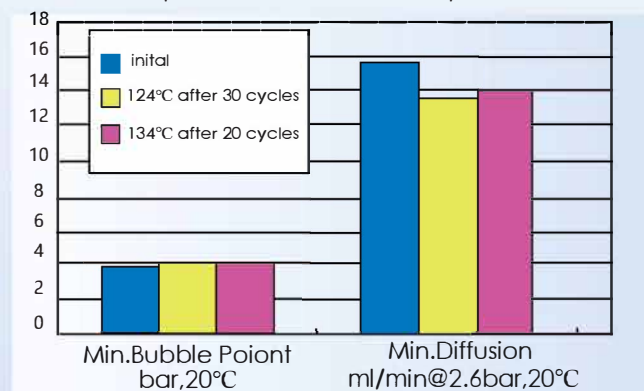
### Suitable for Severe High Temperature Sterilizing

SteriPure-B can ensure integrity at temperature up to 134°C and pressure drop up to 0.5bar due to the high strength of Polyethersulfone membrane and enhanced Polypropylene structure. SteriPure-B can provide excellent filtration service for your process.

#### » Integrity Data

Pore Size	Bubble Point	Diffusion	Challenge Microorganisms	LRV
0.10µm	≥4.0bar	≤18ml/min@3.2bar	Acholeplasma laidlawii (ATCC 23206)	7
0.20µm	≥3.3bar	≤18ml/min@2.6bar	Brevundimonas diminuta (ATCC 19146)	7
0.45µm	≥1.8bar	≤18ml/min@1.4bar	Serratia Marcescens (ATCC 14756)	7
0.65µm	≥1.2bar	≤18ml/min@1.0bar	Saccharomyces Cerevisiae (ATCC 18824)	7
0.80µm	≥1.0bar	≤18ml/min@0.9bar		
1.20µm	≥0.9bar	≤18ml/min@0.7bar		

The figure below shows the Min. Bubble Point and Max. Diffusion data of SteriPure-B 0.2µm before and after steam-in-place.



**International Filter Products**

7914 Ajay Dr., Sun Valley CA 91352  
www.internationalfilterproducts.com  
Phone: (818) 504-8115

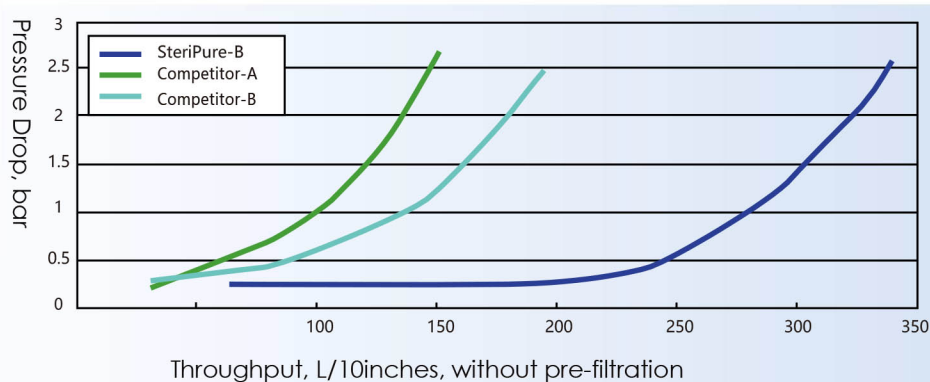
# SteriPure-B Polyethersulfone Pleated cartridge filter

» An Absolute Filter with Long Service Time and High Flow Rate

## Lower Costs and Longer Service Time

SteriPure-B cartridge filters are optimized to slow down the velocity of flow rate decline and increase the particle and colloid capacity on the membrane surface. SteriPure-B can effectively reduce the operating costs of filtration system, the cost of replacement filters and downtime in many applications.

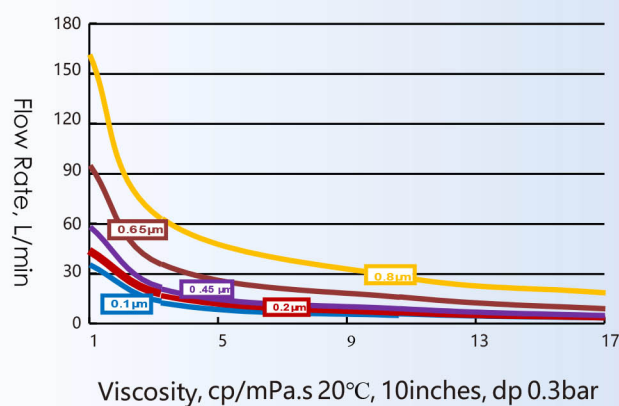
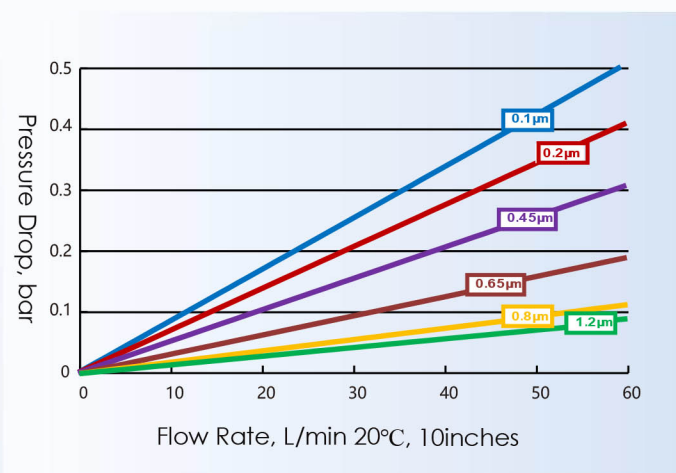
The figure below shows the CHO serum-free media filtration throughput - pressure drop curves that include three PES cartridge filters 0.2µm - SteriPure-B and two competitors.



## Application

- Culture media
- Buffers
- Large volume parenterals
- Bulk pharmaceutical products
- Ultrapure water
- High purity chemicals
- Wine
- Beer

## Flow Rate-Pressure Drop and Viscosity-Flow Rate



## Order Information

Filter Media	Length	Pore Size	Adaptor	Sealing	Core
CRPESB: Polyethersulfone membrane	005 = 5 inches 010 = 10 inches 020 = 20 inches 030 = 30 inches 040 = 40 inches	010 = 0.1µm 020 = 0.22µm 045 = 0.45µm 065 = 0.65µm 080 = 0.8µm 120 = 1.2µm	0 = DOE 2 = 222/Flat 3 = 222/Fin 4 = 222/Fin with 316L SS insert 5 = 226/Fin with 316L SS insert 6 = 226/Fin 7 = 226/Flat	S = Silicone E = EPDM	Blank = PP S = 316L Stainless Steel P = Polysulfone