

# SSSLH SERIES Sanitary Stainless Steel Lenticular Housing

## Introduction:

International Filter Products Sanitary Stainless Steel Lenticular Housings (SSSLH) have been designed to meet the sanitary quality standards of the pharmaceutical, biological, food, and beverage. Our filter housings come highly polished to a 16 RA internal finish and a 25 RA external finish. The finish on our 316L filter housings reduces the risk of bacteria, viruses, or soils adhering to the internal surfaces, thus enhancing the cleaning and sterilizing operation.

The SSSLH Series housings are designed for complete disassembly, allowing full access to all internal surfaces for easy cleaning, draining, or sampling. The simple design of our filter housings with swingaway bolt closure makes filter module change out easy and fast.

The SSSLH Series Filter housings accommodate both the 12.0- and 16.0-inch diameter lenticular disc up to 4 module height. The SSSLH Series Filter housing accepts a wide variety of filter media and various flow rates. International Filter Products has experts available to help with sizing your application.

## Features

- Aseptic Design
- Large Dome Handles
- User-Friendly Vertical Design
- Dome Lifting Lugs
- Total Enclosed Depth Filtration
- Adjustable Legs
- Swing Away Bolt Closure



## Applications

- WFI
- Buffers
- Reagents
- Biologicals
- API Applications
- Pharmaceuticals
- Food & Beverages

## Benefits:

- No Dead Legs
- Fully Self Draining
- Ease of Filter Change-Out
- Maximize Product Recovery.
- Complete Access to Cleaning
- Suitable for a variety of Batch Sizes



**International Filter Products**  
*Revolutionary systems for your industry*

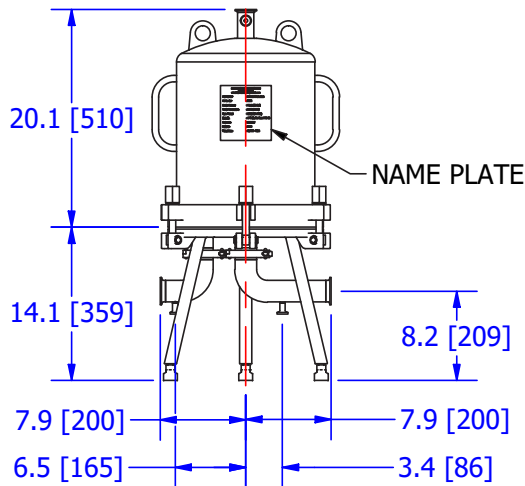
7914 Ajay Drive, Sun Valley, CA 91352 • [www.internationalfilterproducts.com](http://www.internationalfilterproducts.com)  
E-mail: [sales@internationalfilterproducts.com](mailto:sales@internationalfilterproducts.com) • Phone: 818-504-8115



# SSSLH SERIES

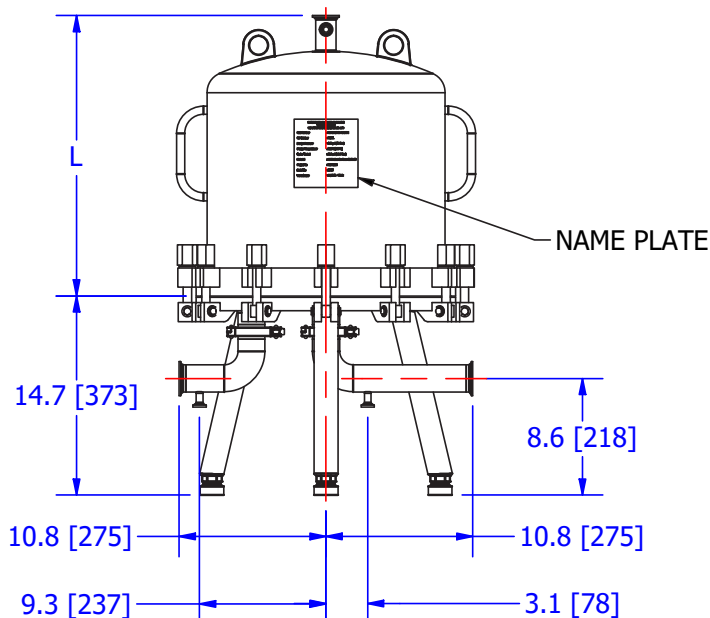
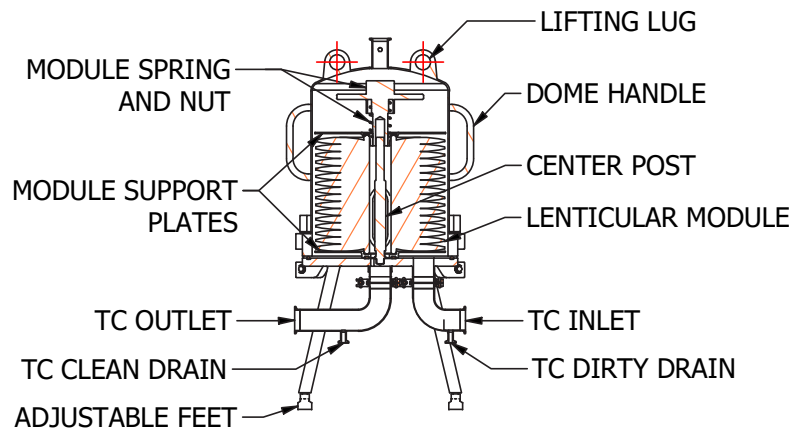
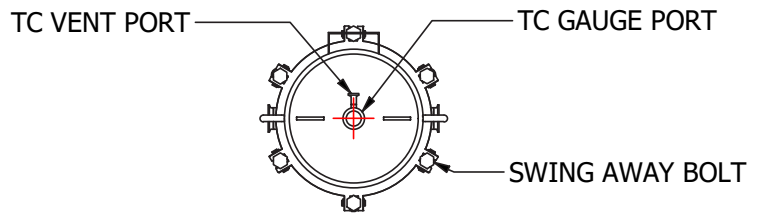
## Sanitary Stainless Steel

### Lenticular Housing



**01-0285-Tabulation (12" Diameter Module)**

PART #	"A" DIMENSION	# of CELLS
01-0285-1	20.1" (510mm)	16
01-0285-2SP	27.73" (704mm)	25
01-0285-2	31.1" (790mm)	32
01-0285-3	42.1" (1069mm)	48
01-0285-4	53.1" (1349mm)	64



**01-0295-Tabulation (16" Diameter Module)**

PART #	"L" DIMENSION	# of CELLS
01-0295-1	20.7 (525mm)	14
01-0295-2	32.70" (830.6mm)	28
01-0295-3	43.8" (1112.5mm)	42
01-0295-4	53.2" (1351mm)	56

# SSSLH SERIES

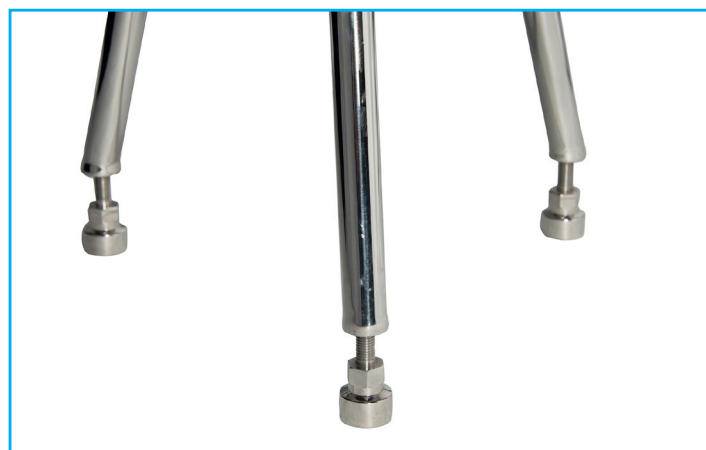
## Sanitary Stainless Steel Lenticular Housing



The Lenticular Housing Flow Rate Guide is provided to allow the user to select filter housing with the correct number of cells and diameter to handle the design flow rate. Our engineers provide recommended inlet and outlet connections for the various flow rates. The table is a guide line only for aqueous solutions.

For other applications, filter housing flow rates will be dependent on the nature of the process. Variables such as filter media formulation and grade, temperature, viscosity, and the contamination level of the fluid will all influence the ideal flow rate.

The filter media utilize mechanical and electrokinetic adsorptive capture mechanisms to remove particles, microorganisms, colloids, and pyrogen from critical process streams. Our scientists have invested years of research and development to create a range of filter grades to meet stringent application requirements.



<b>Lenticular Housing Flow Rate Guide for Aqueous Solutions</b>				
Housing Model	GPM Based on 70°F Water	LPM Based on 70°F Water	Cell Dia (in) & No. of Cells	Inlet & Outlet
01-0285-1	9.5 - 19	20 - 40	12" - 16	2.0" TC
01-0285-2SP	15 - 30	56 - 112	12" - 25	2.0" TC
01-0285-2	19 - 38	72 - 144	12" - 32	2.0" TC
01-0285-3	28.5 - 57	108 - 216	12" - 48	2.0" TC
01-0285-4	38 - 76	144 - 288	12" - 64	2.5" TC
01-0295-1	19 - 38	70 - 140	16" - 14	2.0" TC
01-0295-2	38 - 76	140 - 280	16" - 28	2.5" TC
01-0295-3	57 - 114	210 - 420	16" - 42	2.5" TC
01-0295-4	76 - 152	280 - 560	16" - 56	3.0" TC

# SSSLH SERIES

## Sanitary Stainless Steel

## Lenticular Housing

Materials of Construction:	
Head:	316 L Stainless Steel
Dome:	316 L Stainless Steel
Vent/ Drain Port:	316 L Stainless Steel
Gauge Port:	316 L Stainless Steel
Swing-Away Bolts:	304 Stainless Steel
Legs:	304 Stainless Steel
O-Rings:	Silicone, EPDM, Buna N, TES, TEV or Kalrez

Lenticular Disc Stack Dimensions (Nominal)			
Cell Dimensions:	9 Cell	16 Cell	14 Cell
DIAMETER			
Inches	11-1/8	11-1/8	16-3/4
cm	28.3	28.3	42.5
HEIGHT			
Inches	7-11/16	10-7/8	10-7/8
cm	19.5	27.6	27.6
FILTER AREA			
Ft <sup>2</sup>	11	19	38
M <sup>2</sup>	1.0	1.8	3.5



NOMENCLATURE								
Style #	Cell Number	Inlet/ Outlet	Stack Diameter	Vent	Drain Port	Gauge Port	Seal Material	Cleaning Option
XX-XXXX	-X	-X	-X	-X	-X	-X	-X	-X
01-0285-1	16	1 = 2.0" TC	11-1/8	1 = 1/2" TC	1 = 1/2" TC	1 = 1.5" TC	S = Silicone	0 = No Cleaning
01-0285-2SP	25	2 = 2.5" TC	11-1/8	2 = 1.0" TC	2 = 1.0" TC		B = Buna N, FDA	C = Cleaning
01-0285-2	32	3 = 3.0" TC	11-1/8		3 = 1.5" TC		E = EPDM	
01-0285-3	48		11-1/8		4 = 2.0" TC		K = Kalrez	
01-0285-4	64		11-1/8				TES = TES	
01-0295-1	14		16-3/4				TEV = TEV	
01-0295-2	28		16-3/4				V = Viton	
01-0295-3	42		16-3/4					
01-0295-4	56		16-3/4					

### Connections:

Inlet / Outlet Sanitary Flange, refer to drawing  
Vent / Drain Sanitary Flange, refer to drawing

### Finish:

Exterior Finish: Electro-Polished < 25RA  
Interior Finish: Electro-Polished < 16 RA

### Operating Conditions:

Max Operating Pressure: 142 Psi (10 Bar) @ 212 F (100 C)



**International Filter Products**  
*Revolutionary systems for your industry*

7914 Ajay Drive, Sun Valley, CA 91352  
www.internationalfilterproducts.com  
sales@internationalfilterproducts.com  
Phone: 818-504-8115