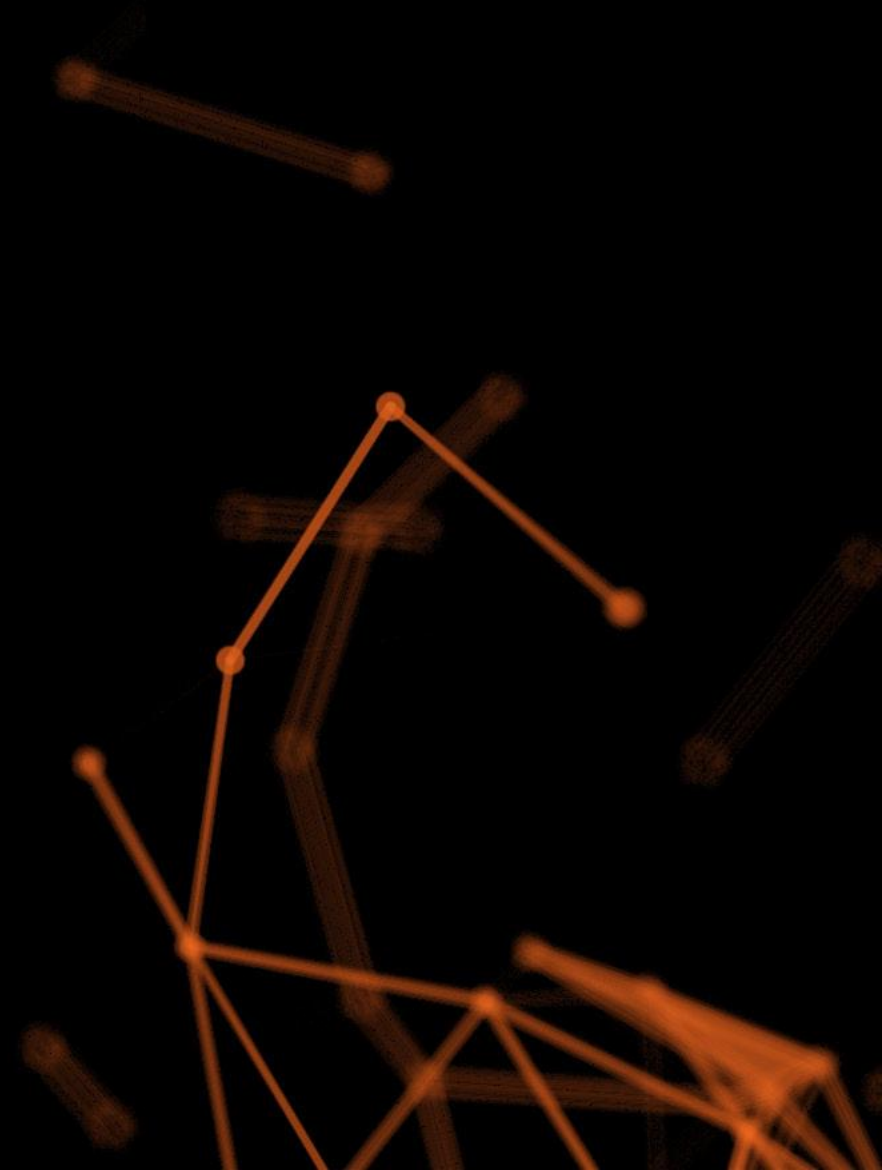




IDEA StatiCa®

Calculate yesterday's estimates

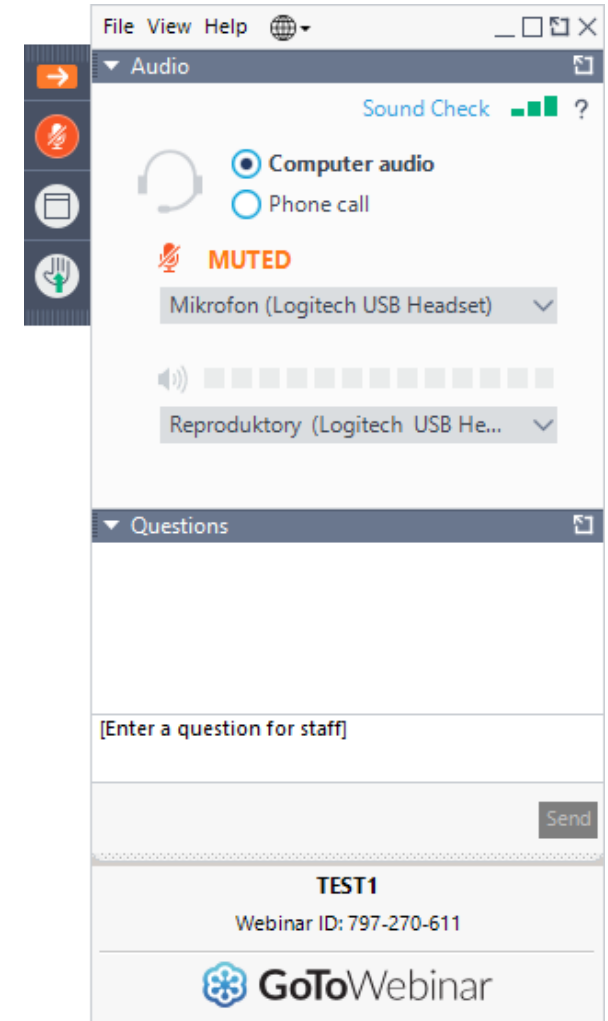
**GROUP, LOAD, DESIGN, DELIVER
ALL CONNECTIONS IN ONE GO**



Control Panel

When you first join a session, the Control Panel appears on the right side of your screen. Use the Control Panel to manage your session. To free up space on your desktop, you can collapse the Control Panel and use the Grab Tab to continue to manage your session.

- **Grab Tab:** From the Grab Tab, you can hide the Control Panel, mute yourself (if you have been unmuted by the organizer), view the webinar in full screen and raise your hand.
- **Audio Pane:** Use the Audio pane to switch between Telephone and Mic & Speakers.
- **Questions Pane:** Ask questions for the staff.



QUESTIONS HANDOUT



AGENDA

Intro to IDEA StatiCa Checkbot

- ✓ Group and batch connection design
- ✓ Critical loads for connection group
- ✓ Bulk report from Checkbot
- ✓ IFC model with connections

Q&A



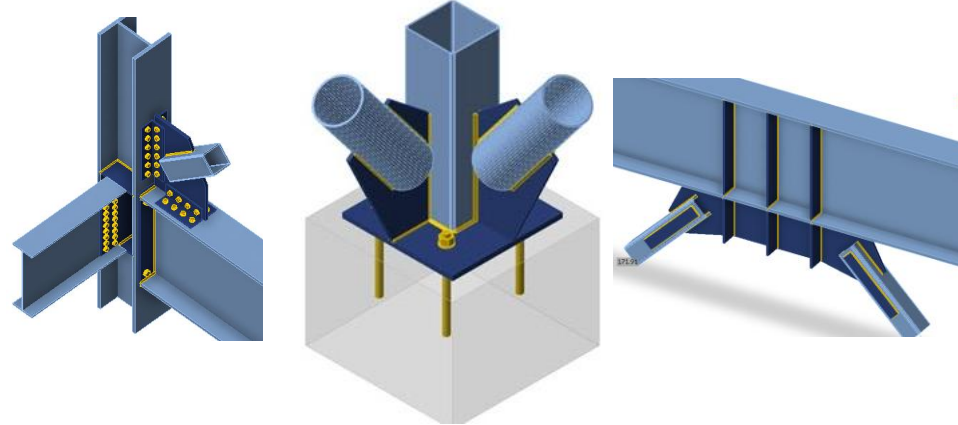
Ps. Download it now!

IDEA StatiCa®

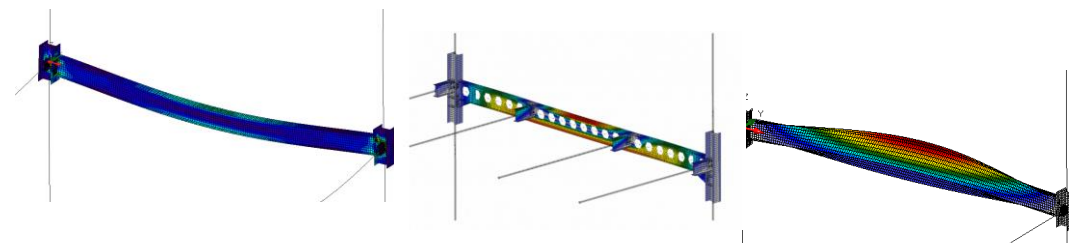
Calculate yesterday's estimates



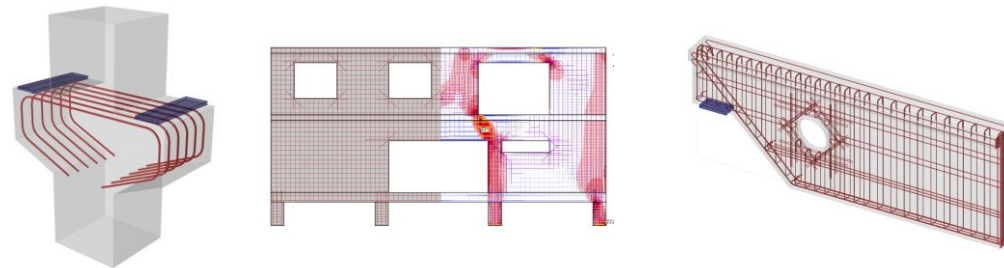
Connection
Steel



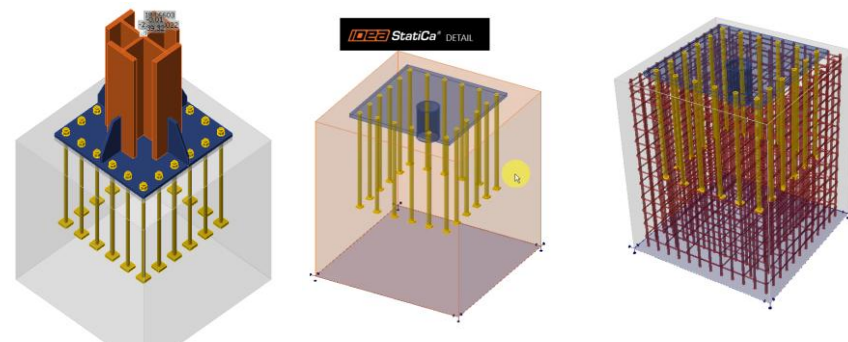
Member
Steel



Detail
Concrete



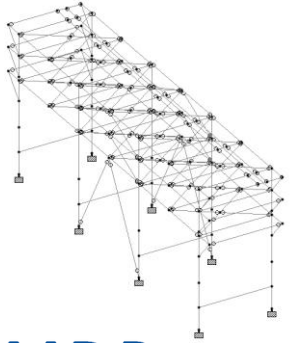
Connection + Detail
Steel + Concrete



INTEGRATED CONNECTION DESIGN

Analysis

1. Global structural analysis and design



STAAD.Pro

SAP2000

ETABS®

RAM® Structural System
CONNECT Edition

Tekla®
Structural Designer

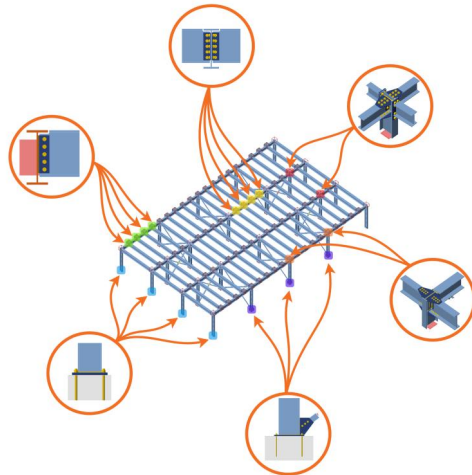
AUTODESK
Robot Structural Analysis
Professional

3D | RISA-3D

Checkbot

1. Import the whole geometry to Checkbot
2. Use the load combinations from the source application

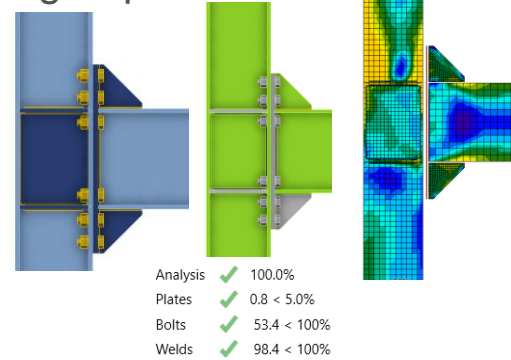
IDEA StatiCa®
Calculate yesterday's estimates



Connection design

IDEA StatiCa®
Calculate yesterday's estimates

1. Design and optimize connection for the actual loads
2. Design connections by groups



Connections

Information

Connections	122
To be designed	99 (81%)
To be checked	15 (12%)
Code-check passed	7 (5%)
Code-check failed	1 (0%)

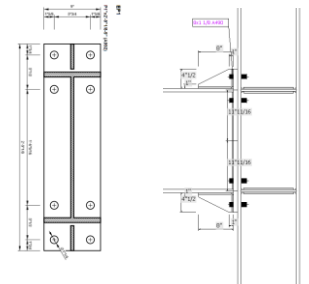
Deliverables

1. Detailed calculation reports and bill of materials

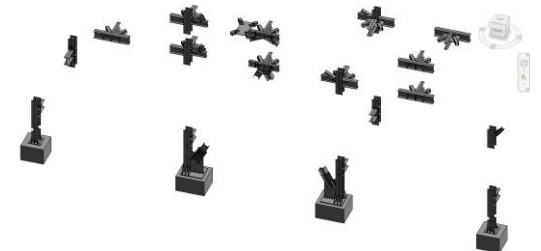
IDEA StatiCa®
Calculate yesterday's estimates



2. Connection sketches and 2D Drawings

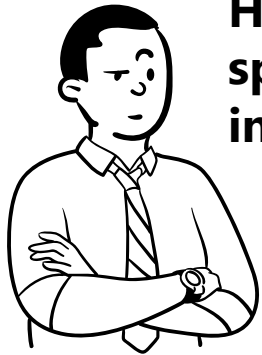


3. IFC and 3D Drawings

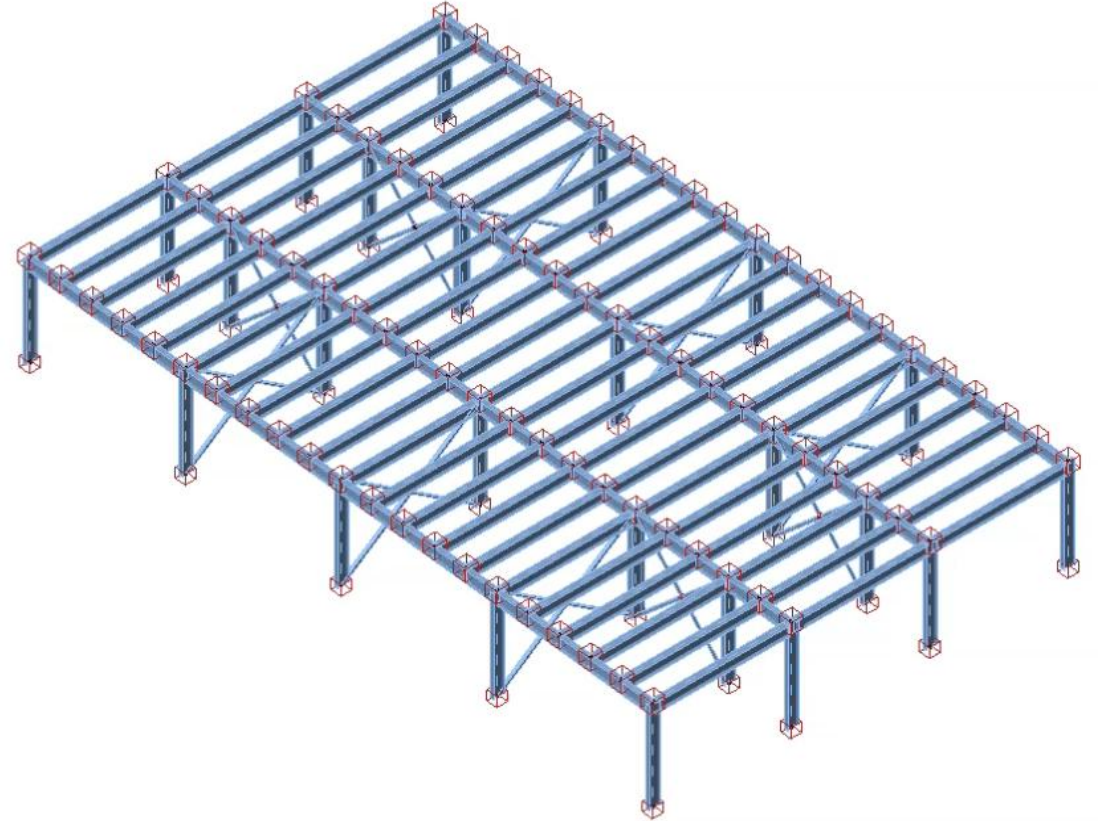


EXAMPLE PROJECT

- Project joints = 118
- Project connections ~200



How much time would you spend designing connections in this project?



DEMO VIDEO

The screenshot shows the 'New project' dialog box in the IDEA StatiCa CHECKBOT application. The window has a dark title bar with the application name and a search bar. A left sidebar contains navigation options: 'New' (highlighted), 'Open', 'Information', 'About', 'Preferences', 'Licences', and 'Exit'. The main area is divided into 'Project' and 'Settings' sections. The 'Project' section includes fields for 'Project name' (IdeaStatiCa-Structure webinar 2025), 'Project folder' (C:\Users\AndreaCasteloFlores\Desktop\Webinar file), and 'Project type' (Steel and Concrete buttons). The 'Settings' section includes a 'Design code' dropdown (US flag), 'Steel code edition' (AISC 360-22 (LRFD)), and 'Concrete code edition' (ACI 318-19). A large orange 'Create project' button is at the bottom.

IDEA StatiCa® CHECKBOT

Search on ideastatica.com

New project

Project

Project name: IdeaStatiCa-Structure webinar 2025

Project folder: C:\Users\AndreaCasteloFlores\Desktop\Webinar file

Project type: Steel Concrete

Settings

Design code: ▼

Steel code edition: AISC 360-22 (LRFD) ▼

Concrete code edition: ACI 318-19 ▼

Create project

AUTOMATIC GROUPING

IdeaStatiCa-Structure webinar 2025

StatiCa® CHECKBOT

PROJECT DESIGN REPORT MATERIALS HILTI PROFIS

Connections Member IFC Viewer Connection file Conversion Nodes Members Connections Groups LCS Open Reset Group Calculate Sync Delete Loads Sync Merge Divide Draw N Mx Results DEAD L... Scale 1.00 Vy My Local Extreme Local extre... Vz Mz

Import Export Connection Options Labels Current item Structural model Member 1D Forces

Icon to import the selected geometry from the source app

Active the group labels in the 3D model

Cubes representing the connection item

2

Connections

Arrangement 1-1

Group 1

- 374
- 373
- 13
- 99
- 107
- 157
- 159
- 176

Arrangement 2-1

Group 3

- 63
- 320
- 323
- 327
- 331
- 336
- 340
- 283

Information

Connections	118
To be designed	118 (100%)
To be checked	0 (0%)
Code-check passed	0 (0%)
Code-check failed	0 (0%)

Project Summary

Joint groups by:

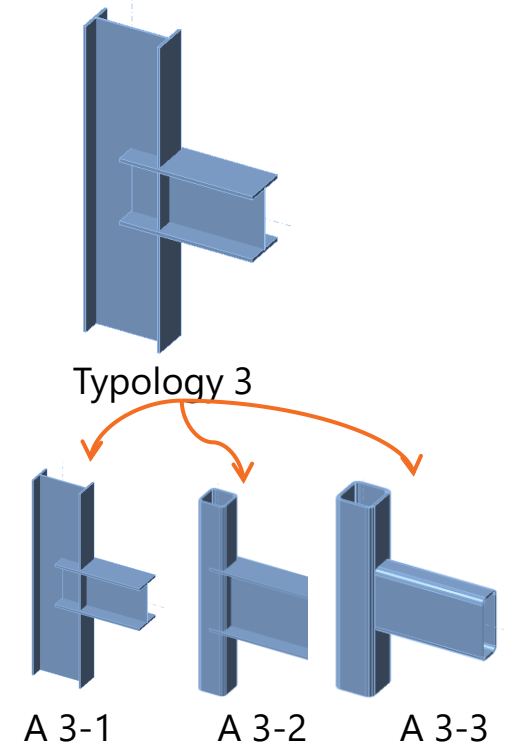
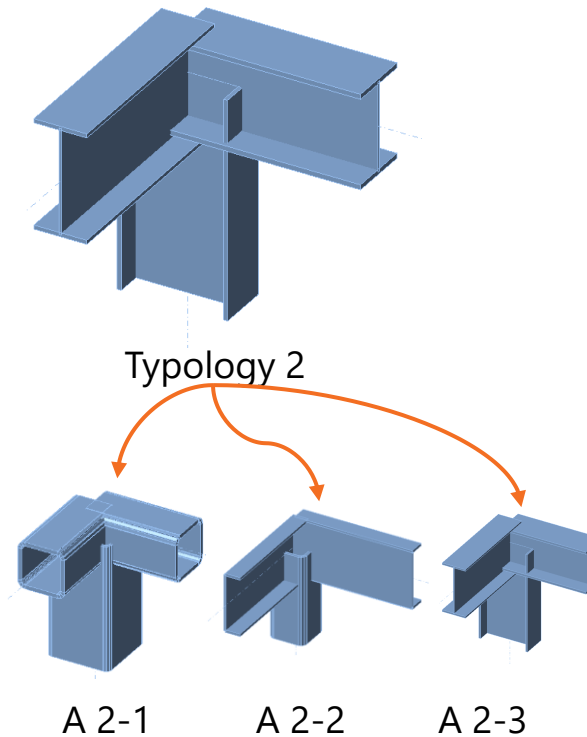
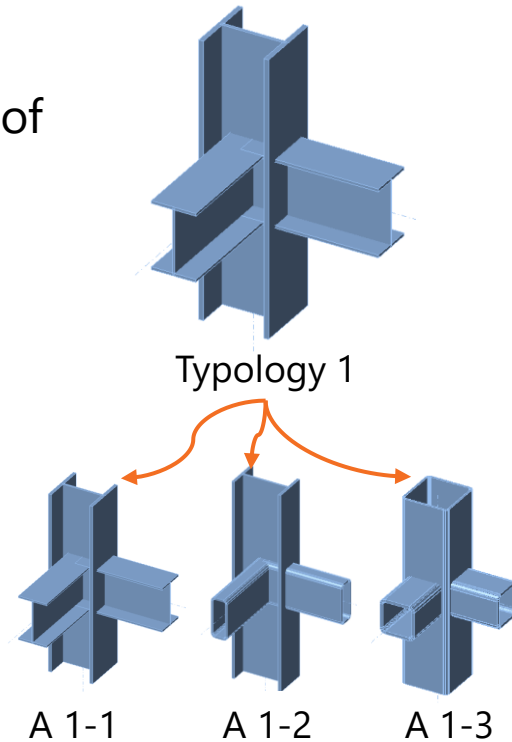
- Number of members
- Orientation
- Cross sections

Design code: AISC 360-22 (LRFD) / ACI 318-19

CHECKBOT Dynamic Grouping

Typology : Number of members and orientation

Arrangements:
Cross section



CRITICAL LOAD COMBINATIONS FOR GROUPS

Group 2 Calculate all Reset all Explode

General

Name: Group 2

Reference connection: 1

Reference design applied to group: Yes

Number of connections: 12

Typology

Number of members: 2

Loads

Result classes for checks: Reference connection

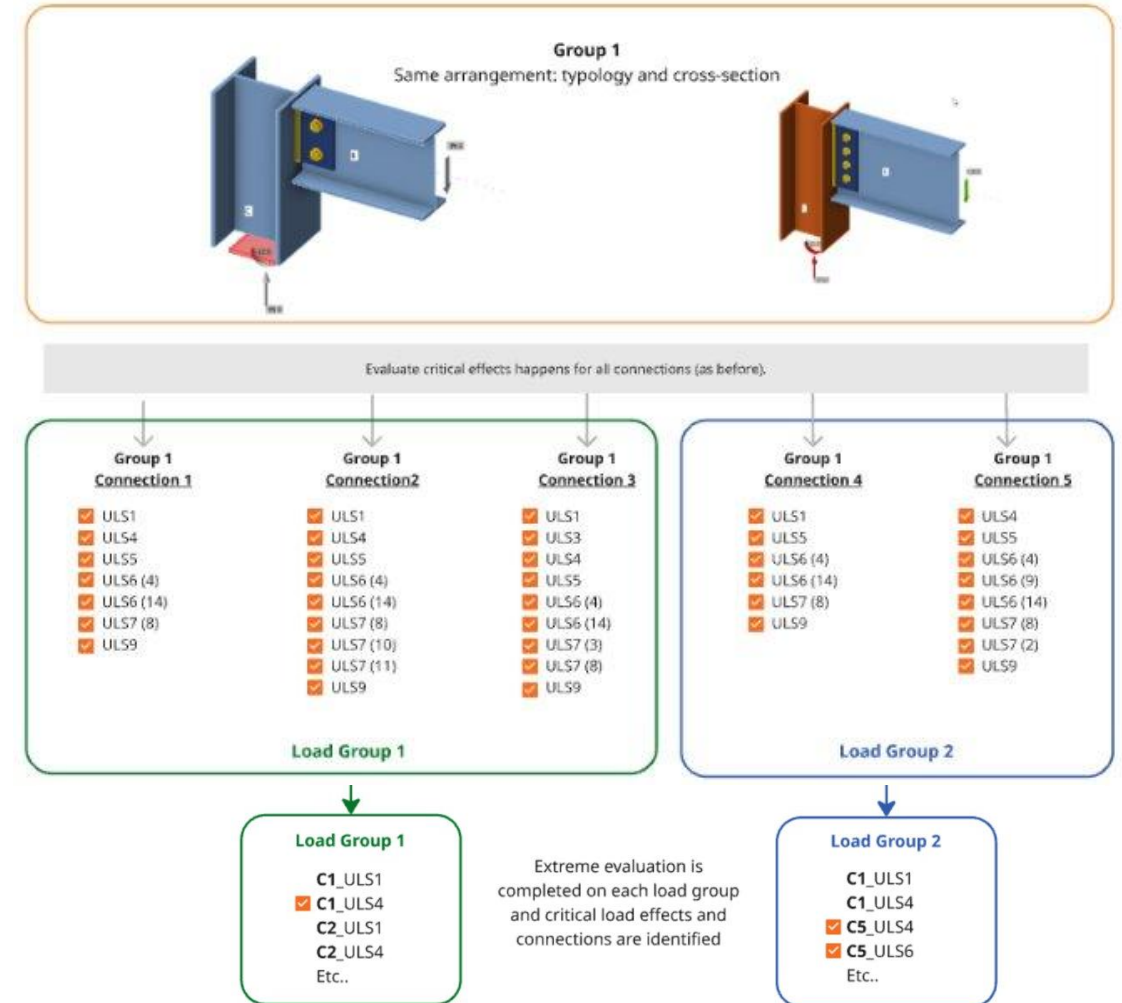
Calculate load extremes: ☒

Critical connections: 12

Load sub-groups: 3

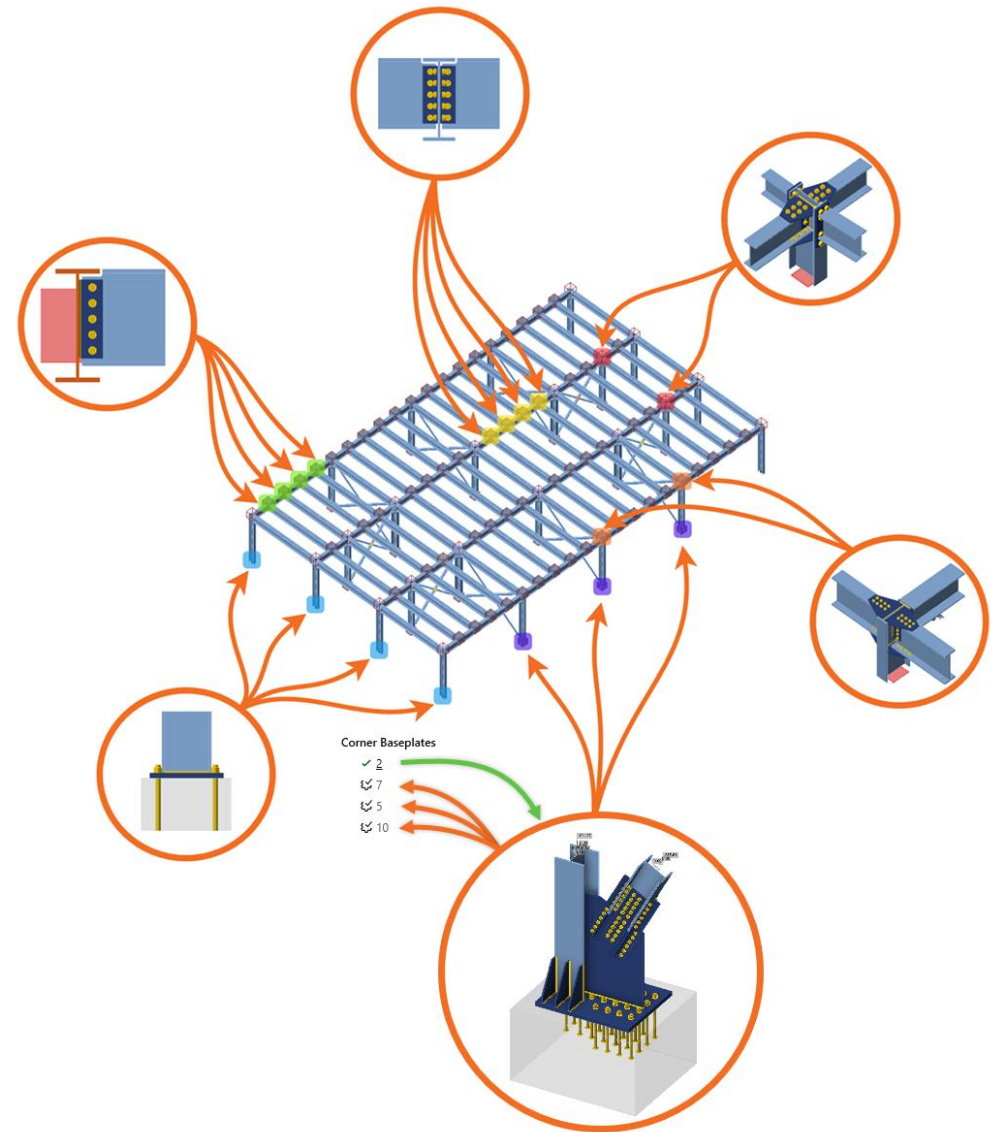
Load sub-group	Critical connection	Critical load effects
[1]	1	2
[1]	42	1
[1]	174	1
[1]	192	2
[2]	44	2
[2]	95	3
[2]	97	1
[2]	161	1

STAAD.Pro



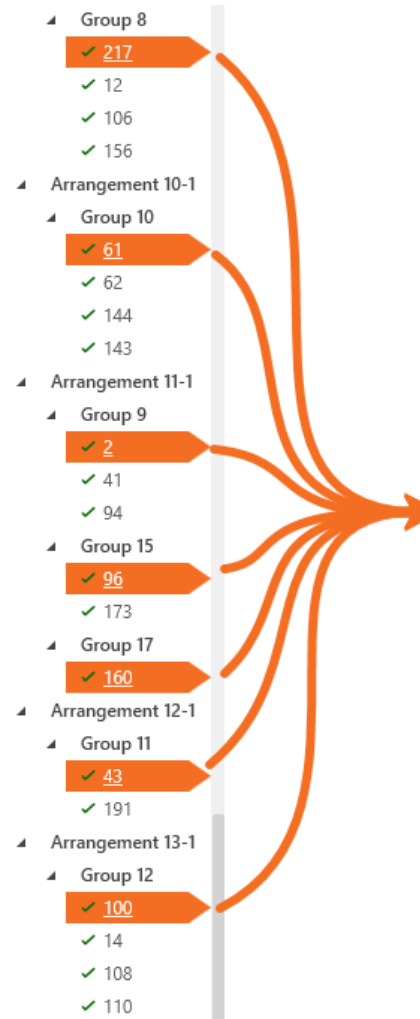
BATCH DESIGN

- ✓ **Model** reference connection
- ✓ **Analyze and check** entire groups
- ✓ **Results** stored in Checkbot



BULK REPORT

- ✓ Brief & Detailed report options
- ✓ All or selected connections in the report
- ✓ Multiple report print options



Project data

Project name
Project number
Project author
Project description
Date 5/1/2025
Design code AISC

Brief result

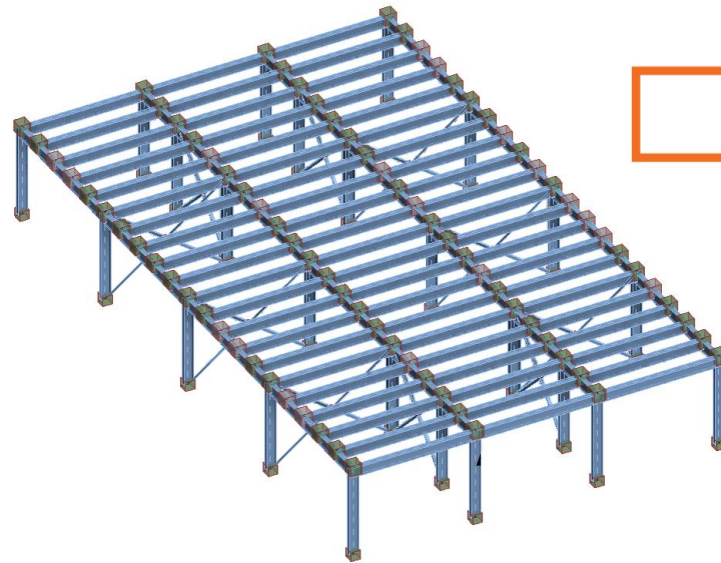
Group	Connection	Check status	Analysis	Details
Group 14	Conn-1	OK	100.0%	
Group 2	63	OK	100.0%	
Group 1	1	OK	100.0%	
Group 13	64	OK	100.0%	
Group 6	335	OK	100.0%	
Group 3	339	OK	100.0%	
Group 4	109	OK	100.0%	
Group 5	218	OK	100.0%	
Group 16	385	OK	100.0%	
Group 7	387	OK	100.0%	
Group 8	389	OK	100.0%	
Group 10	217	OK	100.0%	
Group 9	61	OK	100.0%	
Group 15	2	OK	100.0%	
Group 17	96	OK	100.0%	
Group 11	160	OK	100.0%	
Group 12	43	OK	100.0%	
	100	OK	100.0%	

Software info

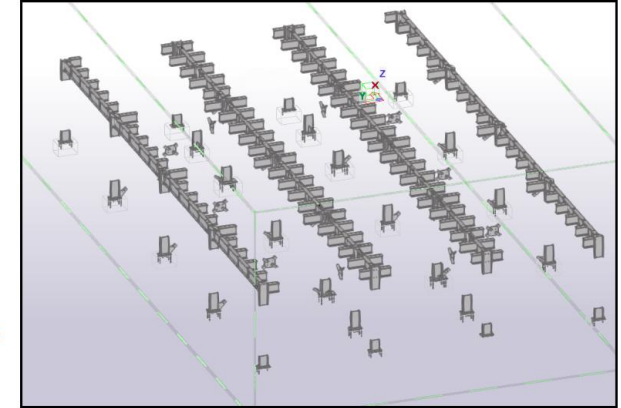
Application IDEA StatiCa Checkbot
Version 25.0.1.1003
Developed by IDEA StatiCa

ALL CONNECTIONS TO IFC MODEL

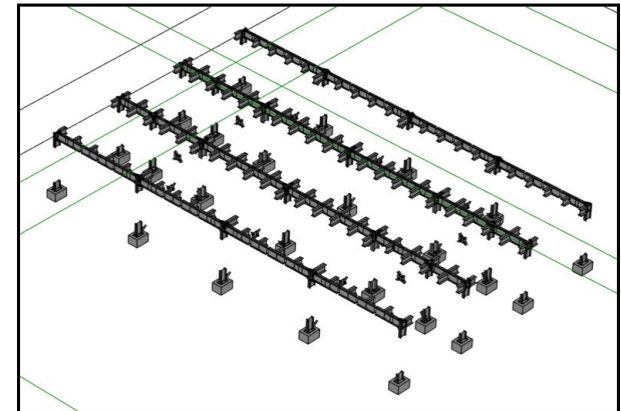
- ✓ Export **all or selected** connections as an IFC file
- ✓ IFC accepted import file for **BIM software**
- ✓ Exported connections retain **original location** for easier integration



Checkbot



Tekla Structures

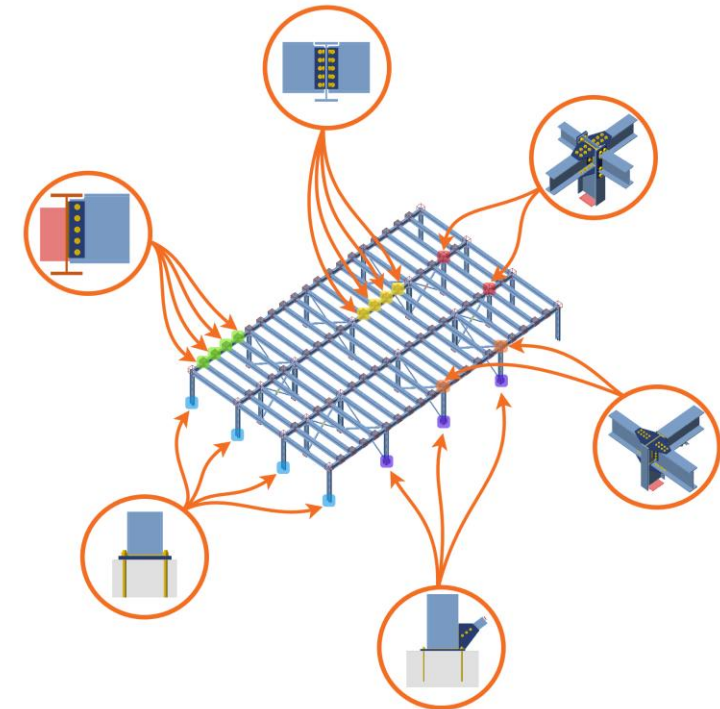


Revit

CONNECTION DESIGN TIME WITH CHECKBOT

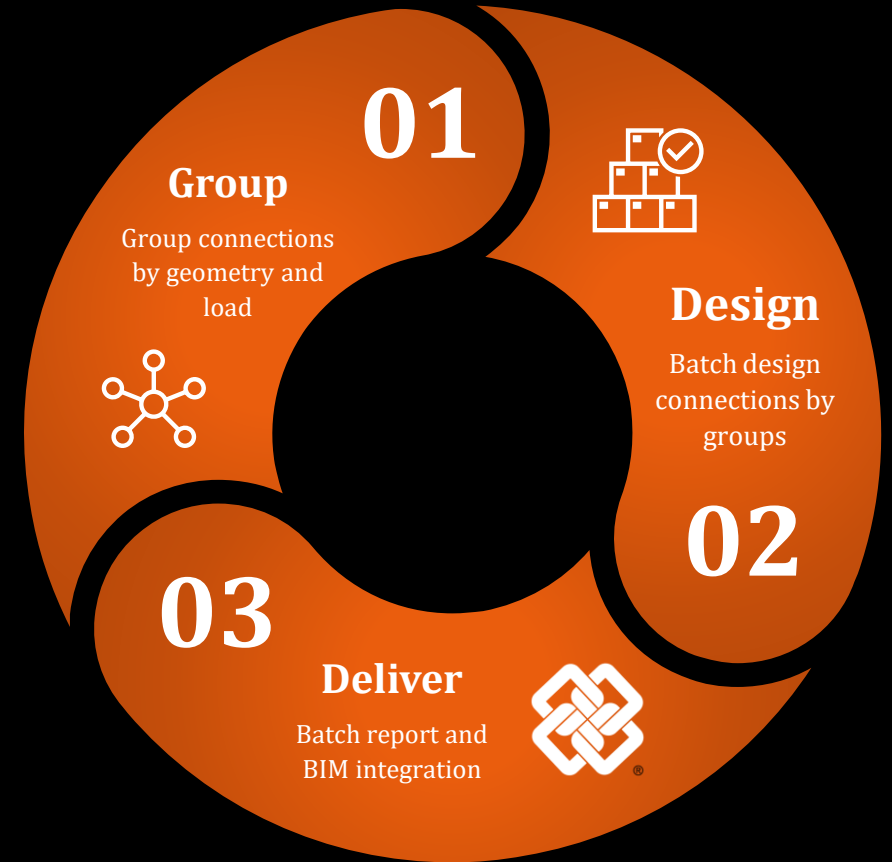
Activity	Time by group (minutes)	#Groups	Total time (minutes)
Import structure	n/a	n/a	2
Critical load checkbox	1.5	13	19.5
Design reference connection	5	13	65
Batch design by group	2.5	13	32.5
Report reference connection only	2	13	26
Total time			2hrs 25min

- Project joints = 118
- Project connections = 200+



NEXT STEPS: TRY THIS WORKFLOW!

- ✓ Supported integrations
- ✓ Multi-management tools in Checkbot
- ✓ Bulk workflows and critical loads
- ✓ Free trial 14 days



GET THE LATEST VERSION FOR THE LOWEST PRICE!

- ✓ The current prices have been in place since 2023, goes up on July 1, 2025.
- ✓ Purchase your first license or add more seats to your existing one by June 30 to secure the current prices!

Request your quote today

<https://www.ideastatica.com/quote-request>



NEXT EVENTS

SEA Arizona – June 5-7

SEAOt San Antonio – June 17

SEA South Carolina – July 17

Next webinar: Concrete design Aug 27



Calculate yesterday's estimates

Q&A