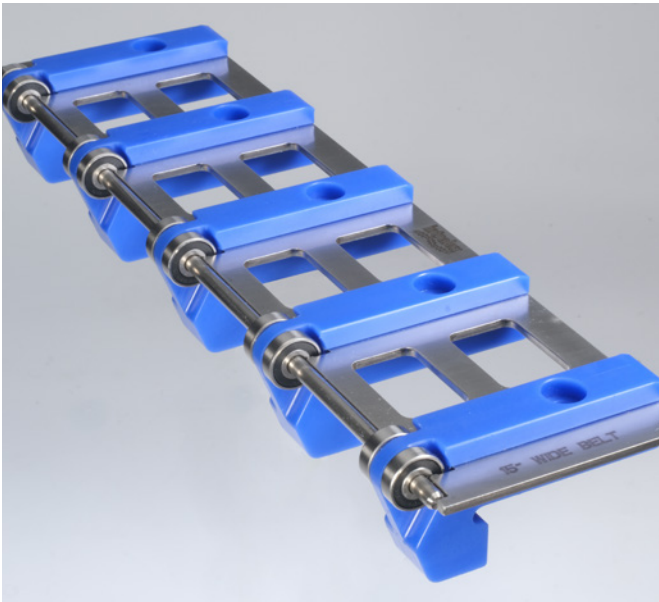


PREVENT PRODUCT STRANDING, DAMAGE, AND JAMS WITH THE 0.75-IN (19-MM) DYNAMIC NOSE-ROLLER

Dead plates are notoriously difficult. They require regular maintenance and, even when working as intended, products often end up stranded, damaged, or jammed in transfers along the way. Greater throughput, smaller items, and more fragile products only exacerbate these problems.



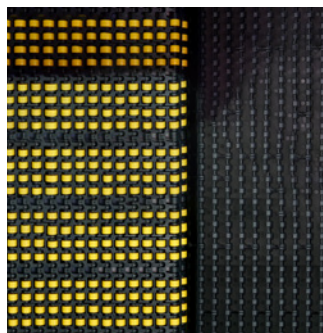
With Intralox's innovative new 0.75-in (19-mm) transfer capability, there is now no need for a dead plate. It's easier than ever to achieve superior small product handling and improve the performance of your belts.

The Dynamic Nose-Roller enables smooth, tight, end-to-end transfers of small, delicate, and high-density ratio products—all without stranding or damage. It is compatible with—and enhances the efficacy and maximum performance of—all styles of the Series 1000 and 2300 belts, including radius and high-density insert rollers.

Key Benefits

- **Optimizes belt performance**
- **Decreases conveyor construction and installation time**
- **Minimizes engineering and manufacturing errors**
- **Reduces required/spare parts due to standard widths**
- **Extends time between necessary maintenance checks, reducing unscheduled downtime**

To learn more about the Dynamic Nose-Roller and Intralox's S1000 and S2300 belts, contact your account manager or customer service representative today.



One customer who switched to the S1000 and S2300 solution with the 0.75-in (19-mm) Dynamic Nose-Roller reports saving nearly 90 hours in assembly and installation time and 30 minutes per labor operator per day.