



## INTRALOX SERVICE TOOL INSTRUCTIONS

### ISC CAM



## SEARCH

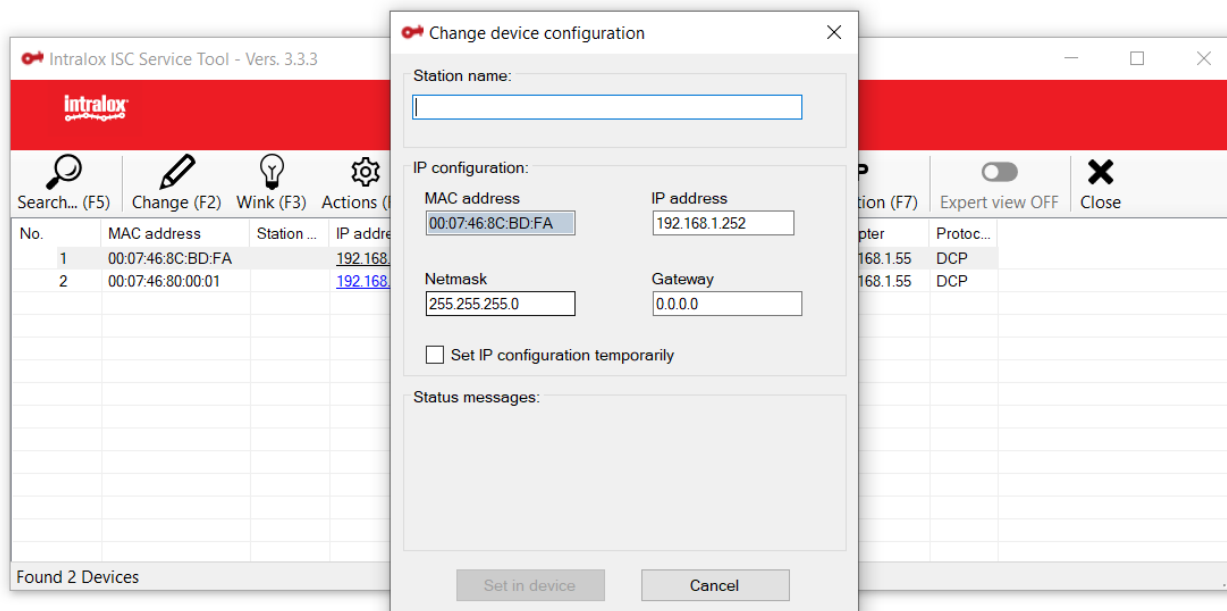
The Search function is used to identify Intralox multiprotocol device on the continuous physical network segment including layer 2 of the OSI model switches.

## PROFINET NAME ASSIGNMENT WITH THE INTRALOX SERVICE TOOL

The methods for address assignment and finding devices mentioned above are general methods. There is no standard in address or name assignment in Modbus TCP. For that reason, the IP address assignment via Intralox service tool is important. For the operation at PROFINET, the stations of course support the protocols and tools for the naming of devices used in the PLC environment. The Intralox service tool can be used for PROFINET device name assignment. By using the PROFINET protocol DCP ('Device Configuration Protocol'), it should always be possible to find devices and to read out their device information.

The device name may be assigned by the tool. The procedure:

1. 'Search' to discover device
2. Highlight that device
3. Click 'Edit'
4. Assign a "Station name"
5. Assign IP address
6. Click 'Set in device'



---

## WINK FUNCTION

By using the Wink function a single device is forced to send an LED signal. This is done for localizing one device within in a group of several identical devices in an existing installation or machine.

---

## RESET TO FACTORY SETTINGS

The Intralox service tool allows the reset of devices to their factory settings. It's not advisable to do a factory reset without consulting with Intralox customer service. You may need files from Intralox to get your equipment to a functional state again. Please consult with Intralox before using this functionality.

---

## CONNECT TO VHMI

The quickest way to connect to the ISC vHMI is via the Intralox ISC Service Tool. By double clicking the IP address you will be linked to the vHMI with your default browser. Remember that the IP address transitions to 0.0.0.0 when DHCP server is started.