



**I-MED Radiology
Network**

Comprehensive care. Uncompromising quality.

Which scan is best?

A quick guide to x-rays for podiatrists

At I-MED Radiology we offer a wide number of x-ray options for podiatrists. This guide is intended to help you decide which scan is best for your patient's diagnosis. If you have any further questions please contact your I-MED clinic for personalised advice.

Routine protocol:

TOE:

- Dorsiplantar, medial-oblique, lateral
- Extra views performed as required: lateral oblique

FOOT:

- Dorsiplantar, medial-oblique, lateral
- Images performed weight-bearing if required
- Extra views performed as required: lateral oblique, axial sesamoids, axial heel

HEEL:

- Axial, lateral
- Extra views performed as required: medial-oblique, lateral oblique

ANKLE:

- AP, medial-oblique, lateral
- Images performed weight-bearing if required
- Extra views performed as required: lateral oblique, broden oblique, sinus tarsi

Toes



Dorsiplantar



Medial-oblique / oblique



Lateral oblique



Lateral



**I-MED Radiology
Network**

Comprehensive care. Uncompromising quality.

Foot / Heel / Sesamoids



DP foot
Dorsiplantar / AP / Anteroposterior



Weight bearing DP foot
Standing DP



Medial oblique foot
Oblique



Weight bearing oblique
Standing



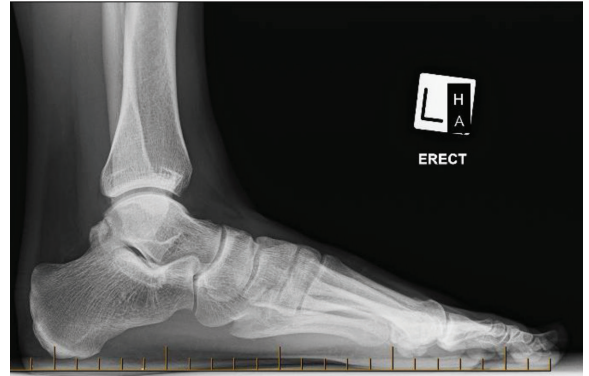
**I-MED Radiology
Network**

Comprehensive care. Uncompromising quality.

Foot / Heel / Sesamoids



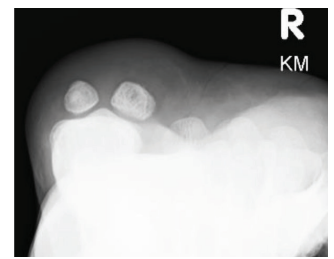
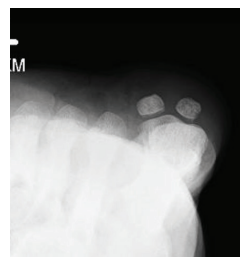
Lateral oblique foot



Weight bearing lateral
Standing



Lateral



Axial sesamoids



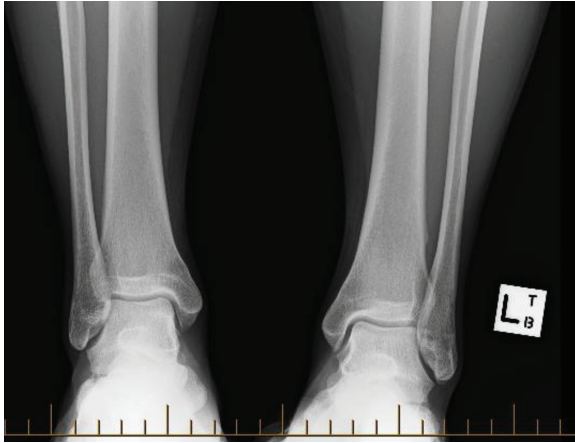
Axial heel



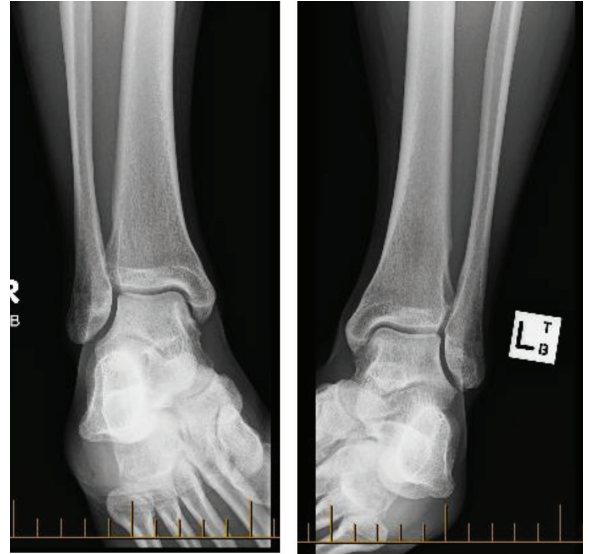
**I-MED Radiology
Network**

Comprehensive care. Uncompromising quality.

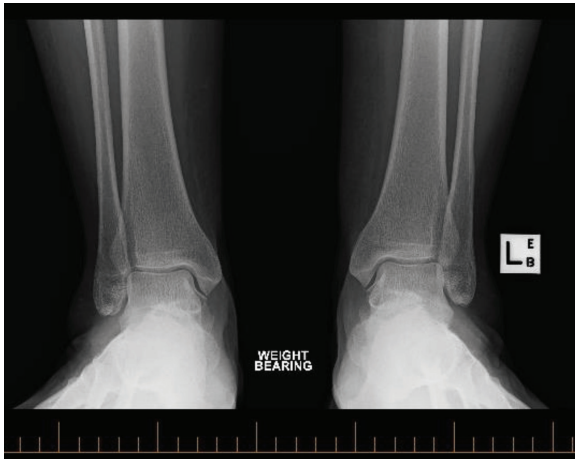
Ankle / Subtalar Joints



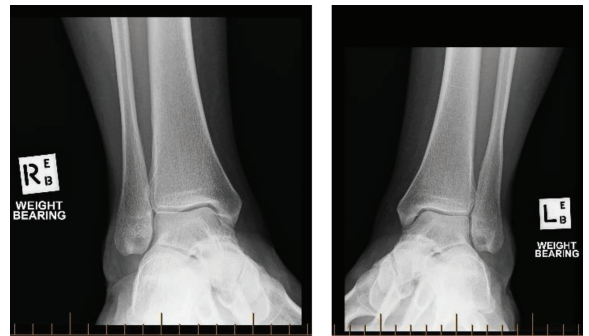
AP ankle



Medial oblique ankle
Mortise ankle



Weight bearing AP ankle



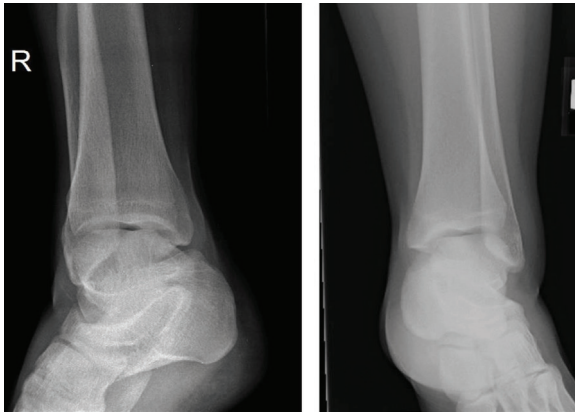
Weight bearing medial oblique
Weight bearing mortise ankle



**I-MED Radiology
Network**

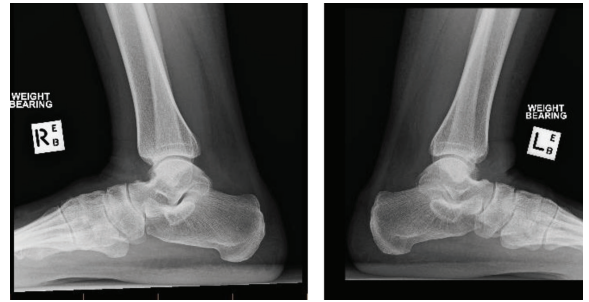
Comprehensive care. Uncompromising quality.

Ankle / Subtalar Joints

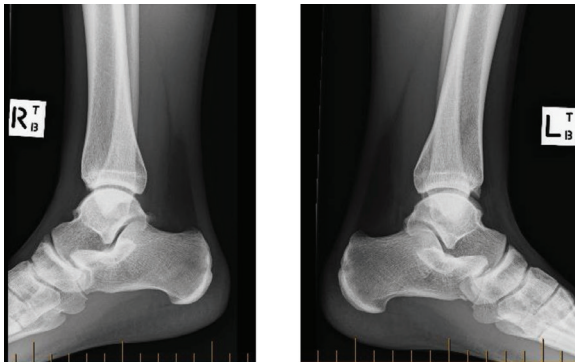


Lateral oblique ankle

Source: <https://www.ceessentials.net/article28.html>



Weight bearing lateral ankle



Lateral ankle



Broden obliques

For better visualisation of the subtalar joint

Source: http://www.wheelsonline.com/ortho/brodens_views



**I-MED Radiology
Network**

Comprehensive care. Uncompromising quality.

Ankle / Subtalar Joints



Sinus tarsi view

Source: <https://musculoskeletalkey.com/diagnostic-imaging-techniques-of-the-foot-and-ankle/>



CT leg length scanogram



**I-MED Radiology
Network**

Comprehensive care. Uncompromising quality.