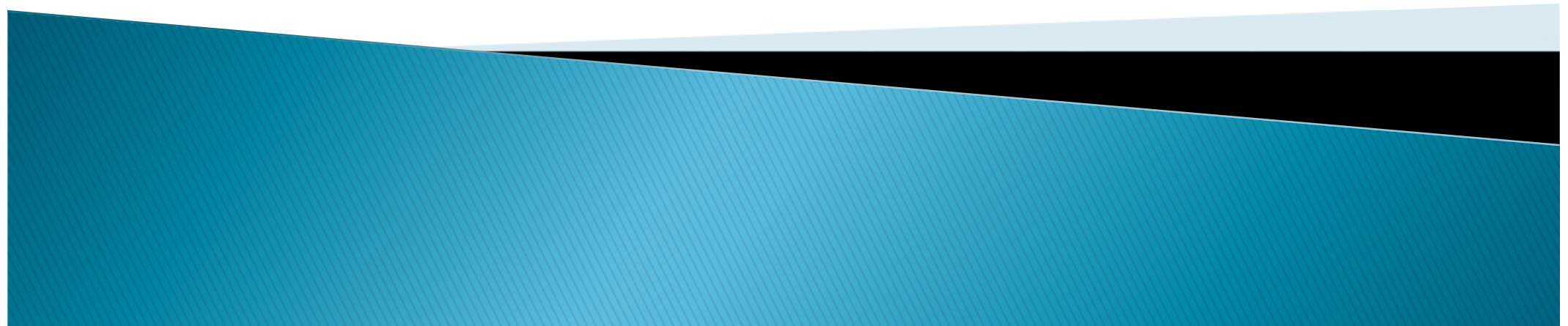


# South Okaloosa County Community Alliance Data

FamiliesFirst Network  
June 2017



# Trends and Updates

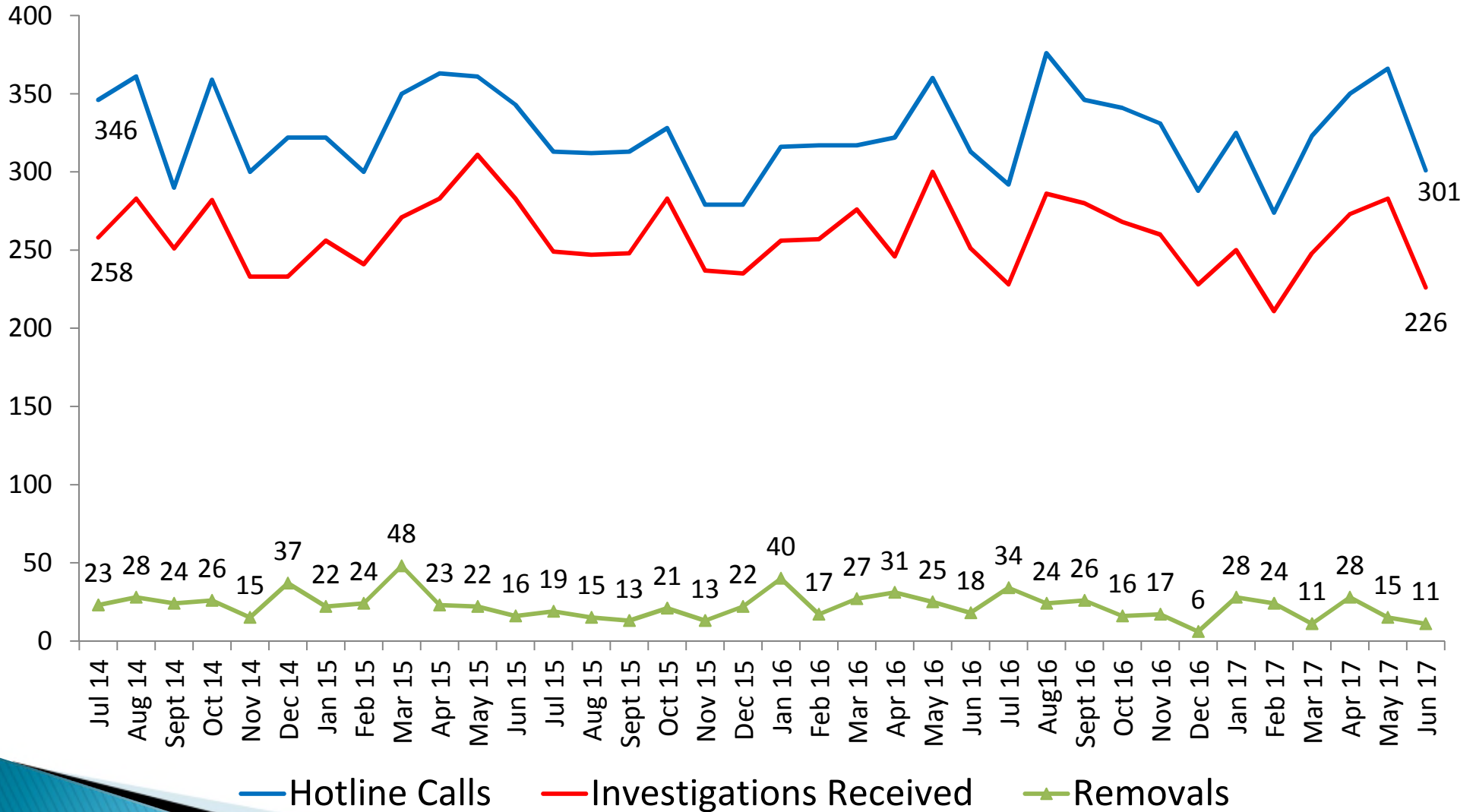
April to June 2017

- ▶ Okaloosa county removals spiked in April but decreased the last two months of the quarter.
- ▶ There has been a 20.4% decrease in children receiving services since September 2016.
- ▶ Out-of-home care numbers remain very low and in May, South Okaloosa reached the lowest number of children in out-of-home care since January 2014.
- ▶ Relative/non-relative placements have increased while licensed placements have decreased. However, group home placements remain very high.
- ▶ The performance measure targets have been met or exceeded for the following measures:
  - Children under supervision seen every 30 days
  - Rate of abuse or neglect per day while in out-of-home care
  - Children exiting out-of-home care to a permanent home within 12 months
  - Children achieving permanency in 12 months for children in out-of-home care 12 to 23 months
  - Children in out-of-home care who received medical services within the last 12 months
  - Children in out-of-home care who received dental services within the last 7 months
  - Sibling groups where all siblings are placed together
- ▶ South Okaloosa has had a net loss of 13 traditional foster home beds since June 30, 2016, however, did increase six beds from last quarter.
- ▶ South Okaloosa has 38 traditional foster homes with a total capacity of 70 beds as of June 30, 2017.

# Investigations Summary

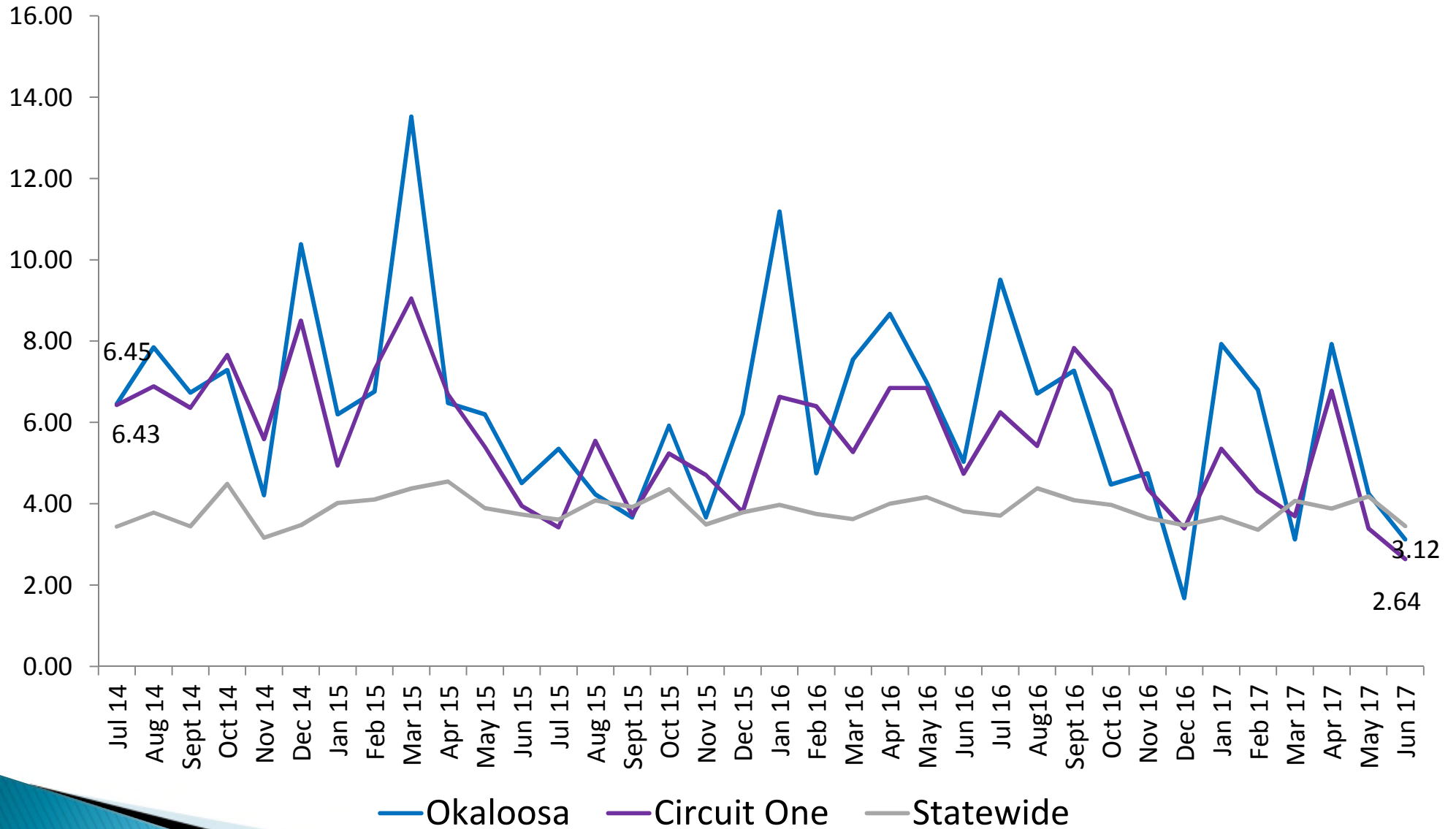
» Hotline Calls, Investigations, and Removals

# Comparison of Hotline Calls, Investigations Received, and Removals Okaloosa County



# Removal Rate Per 1,000 Children

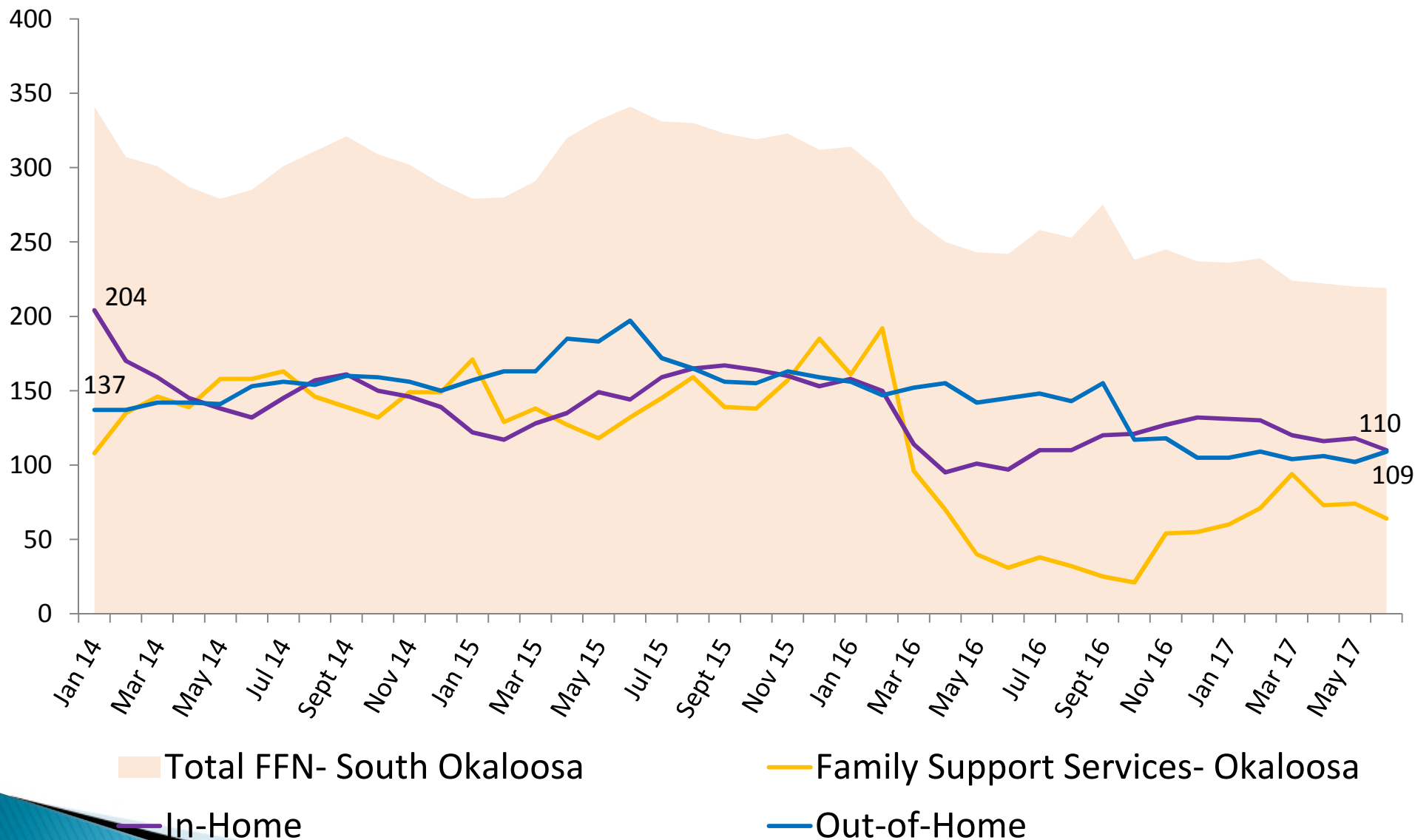
## Comparison of Okaloosa County, Circuit One, and State



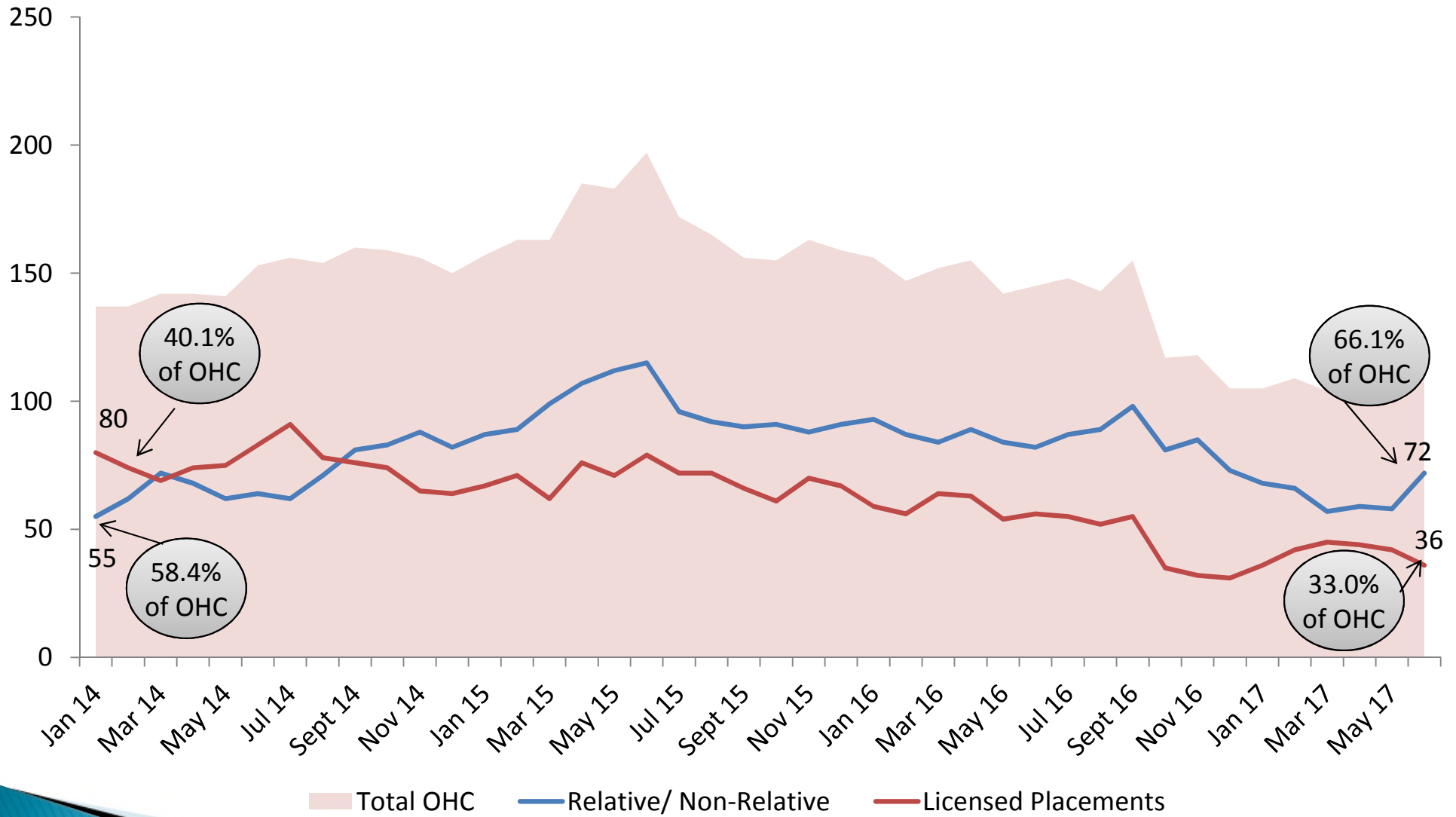
# Children Receiving Services



# Children Receiving Services by Service Type South Okaloosa County



# Comparison of Children in Out-of-Home Care and Type of Placement South Okaloosa County

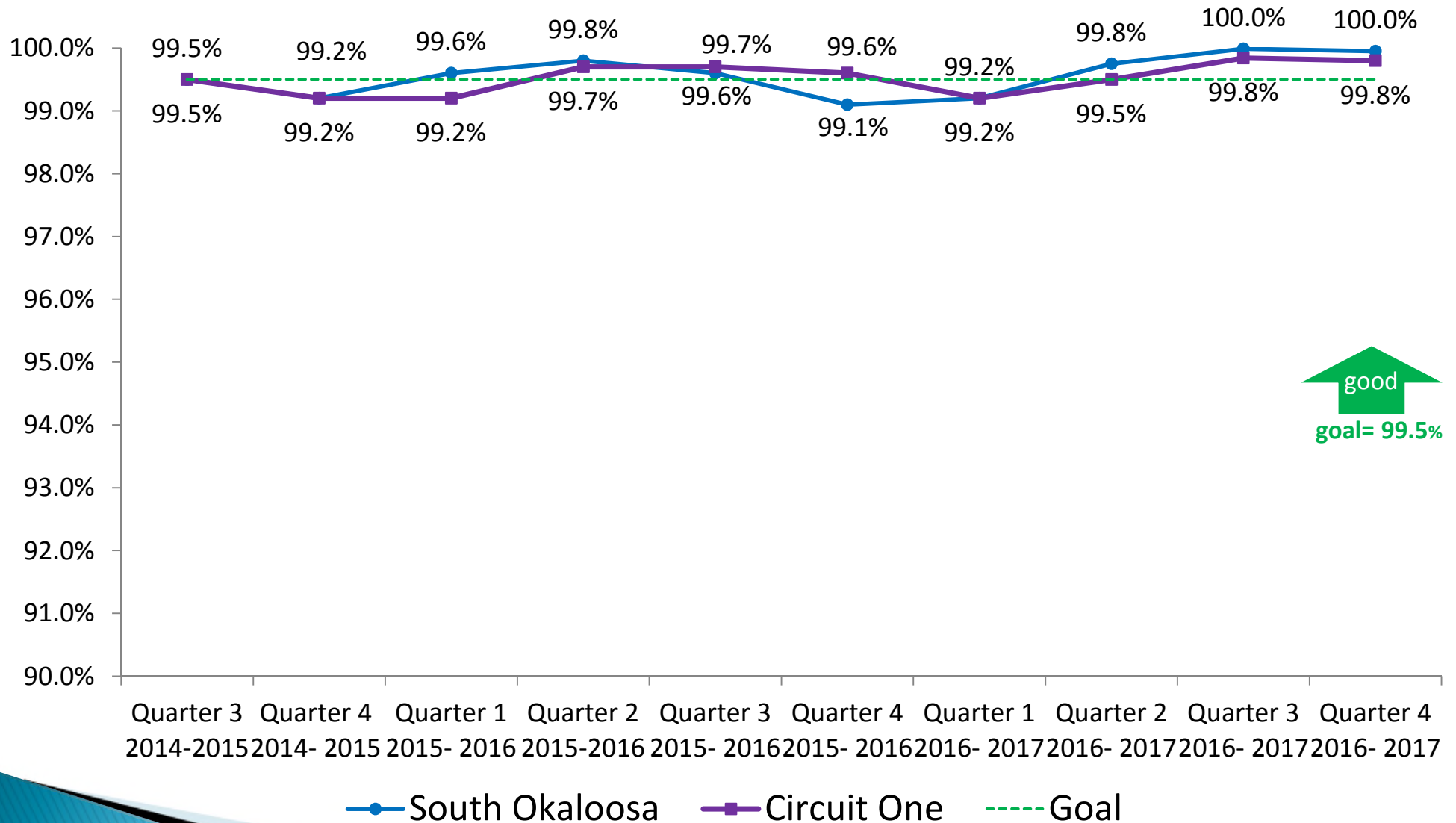




# Performance Measures

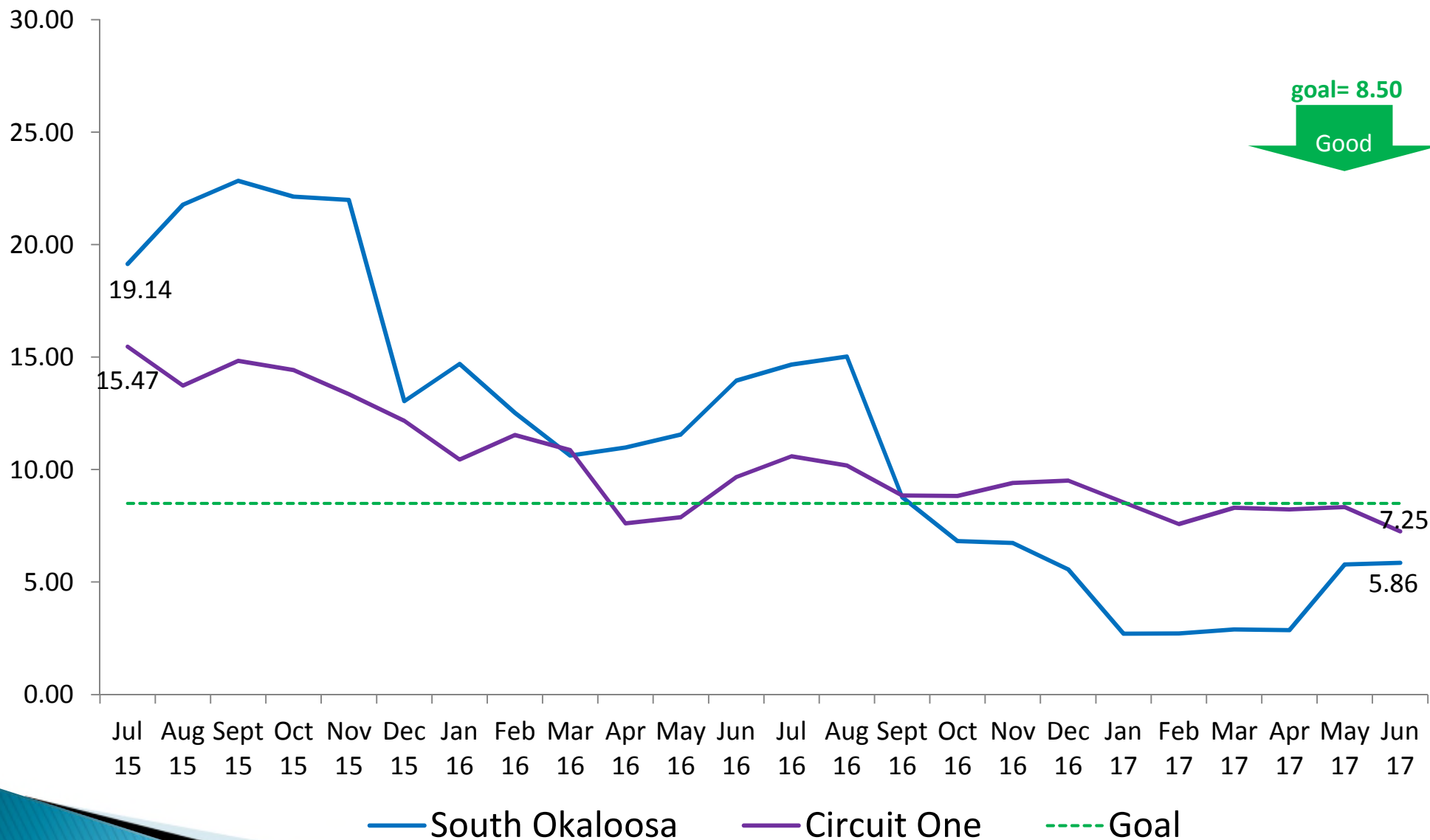
» Safety

# Percent of Children Under Supervision Seen Every 30 Days South Okaloosa County



  
 good  
 goal= 99.5%

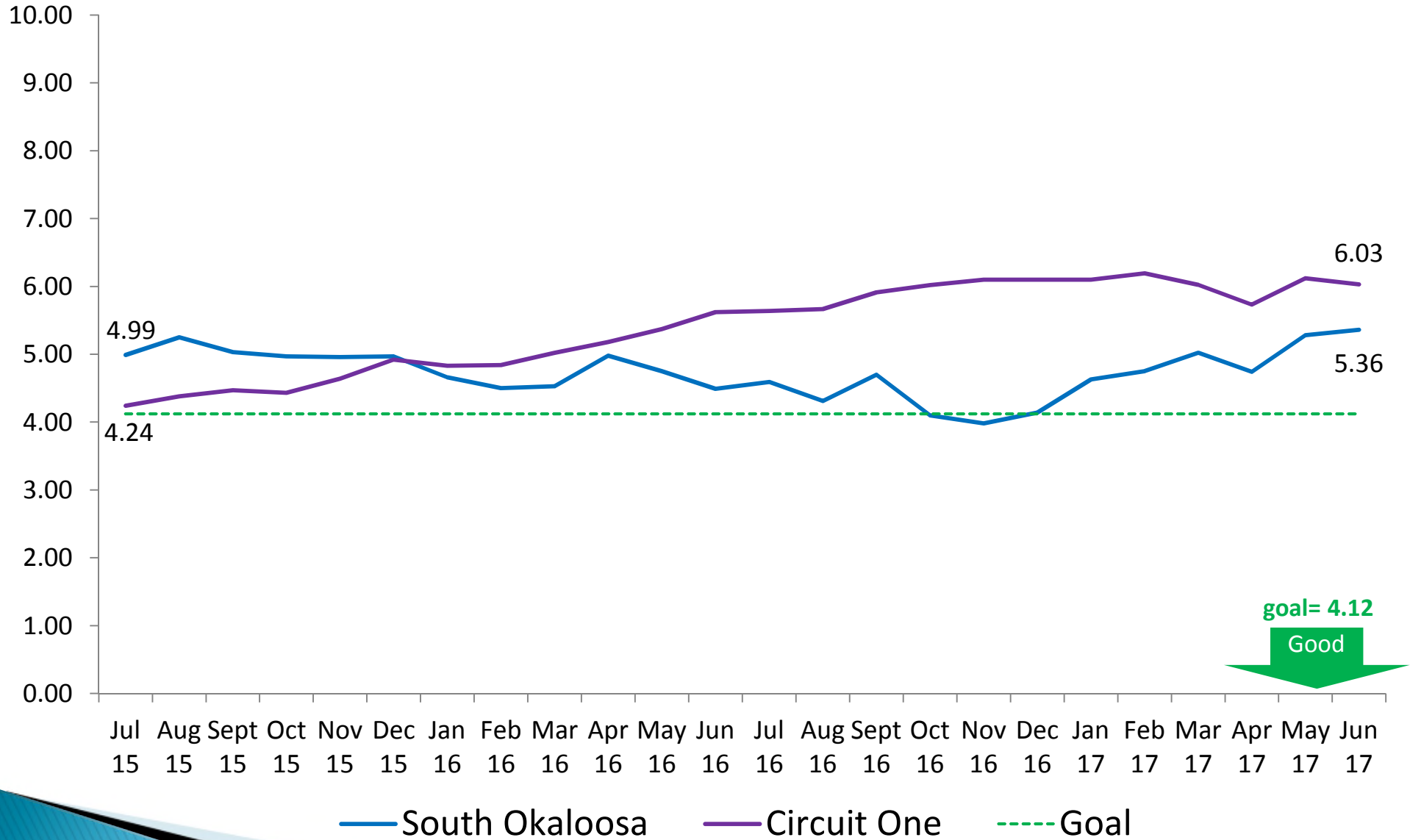
# Rate of Abuse or Neglect per Day While in Out-of-Home Care South Okaloosa County



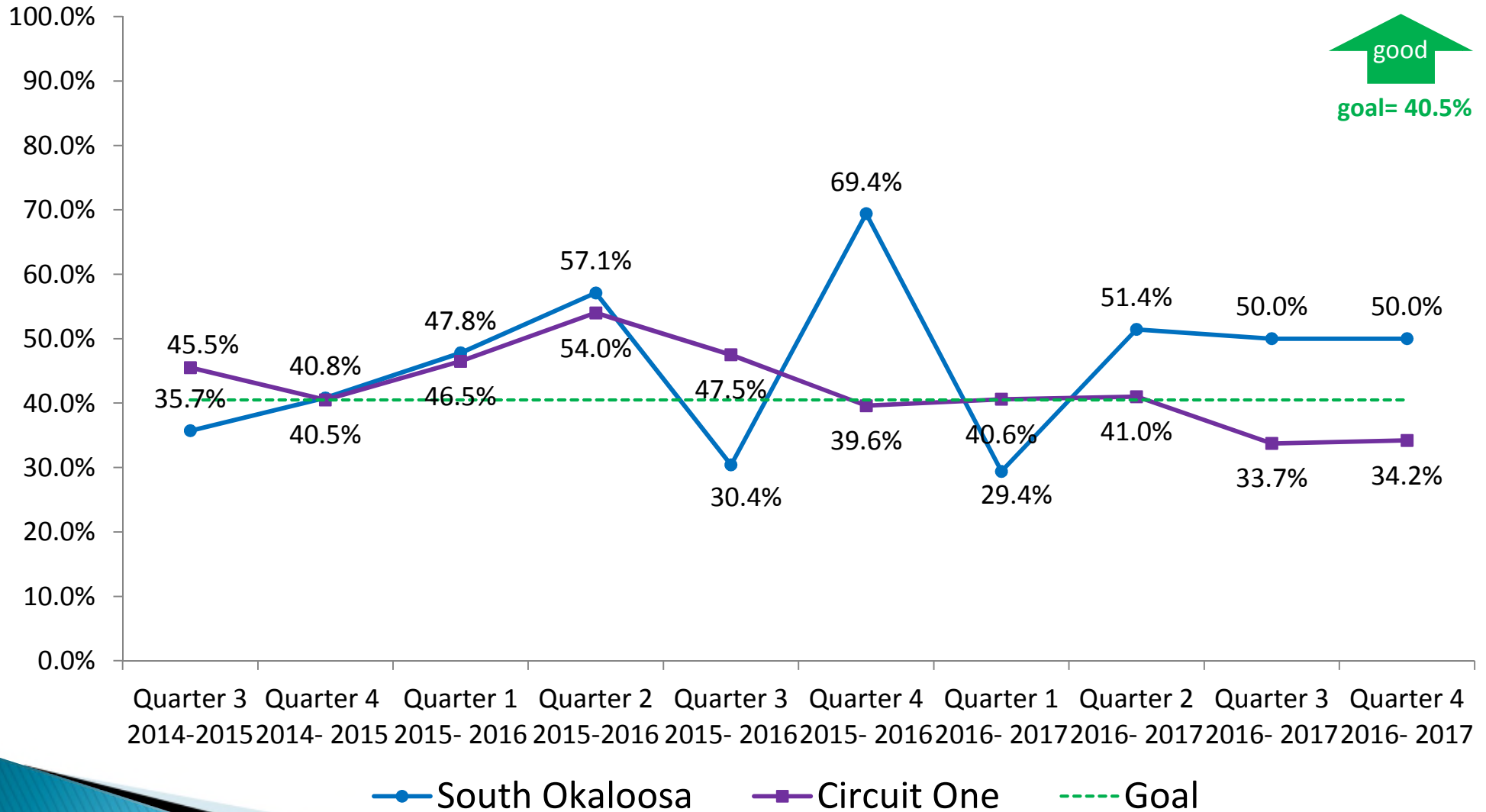
# Performance Measures

» Permanency

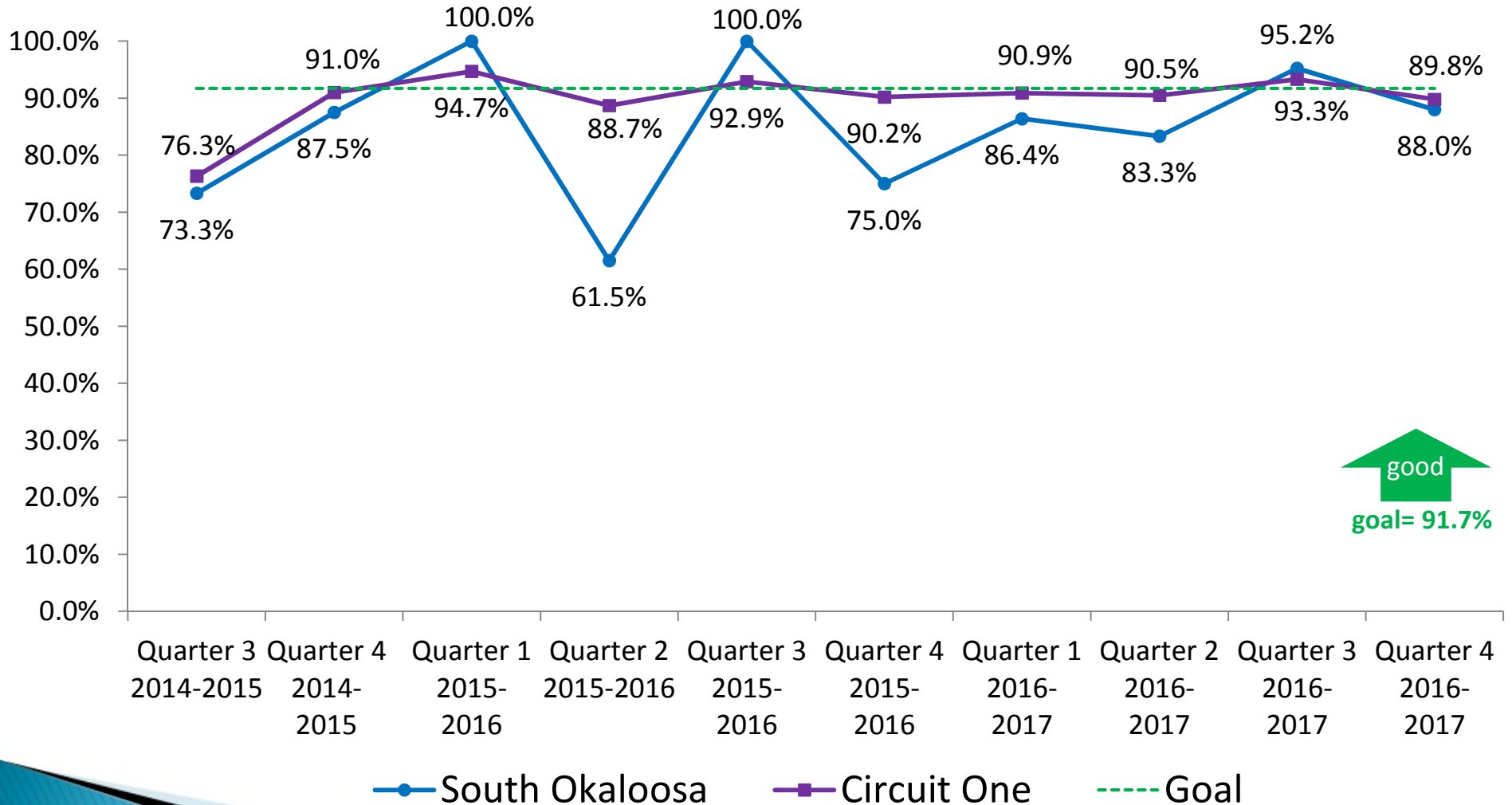
# Rate of Placement Moves Per 1,000 Days in Out-of-Home Care South Okaloosa County



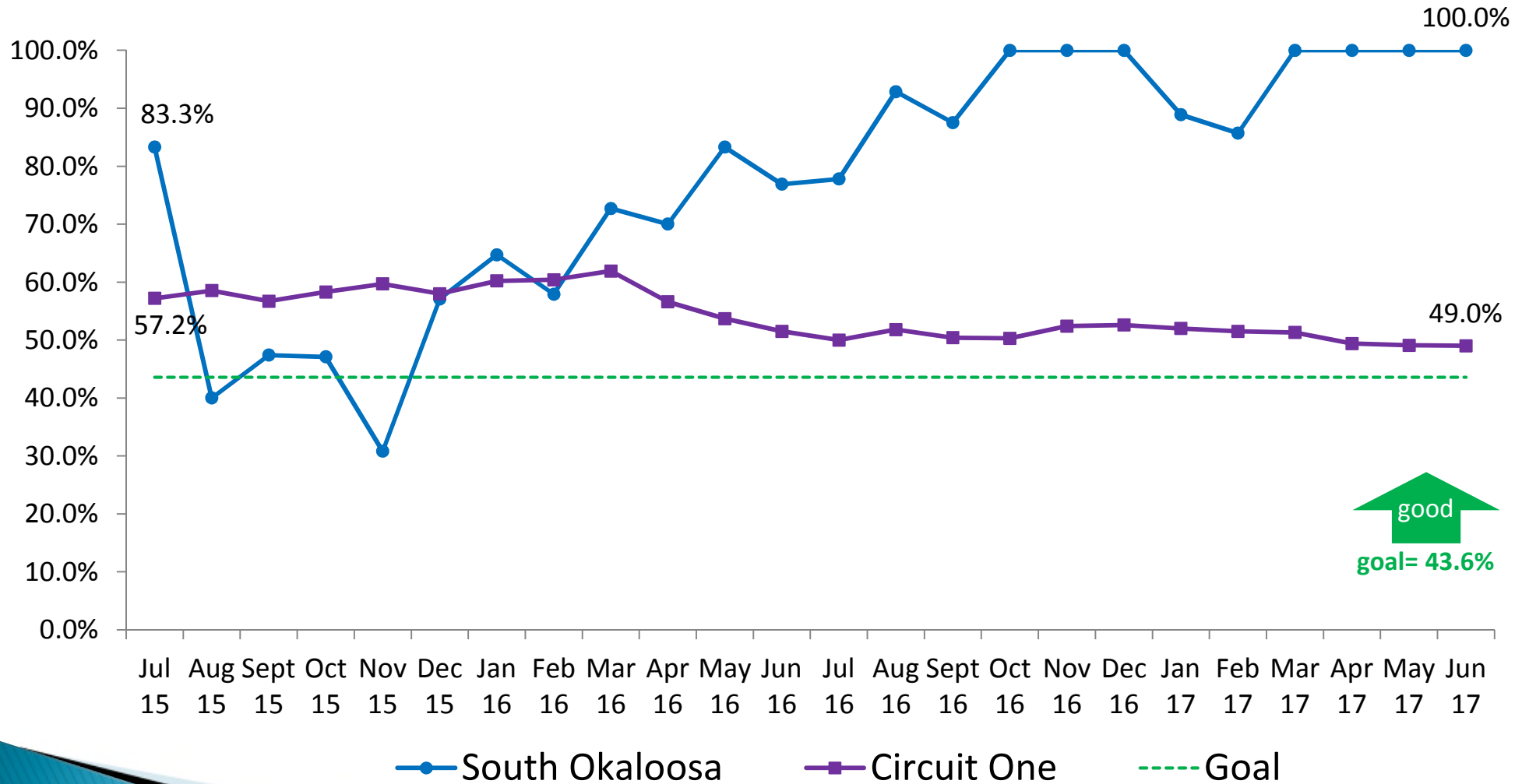
# Children Exiting Out-of-Home Care to a Permanent Home within 12 Months South Okaloosa County



# Children Who Do Not Re-Enter Out-of-Home Care within 12 Months of Moving to a Permanent Home South Okaloosa County



# Children Achieving Permanency in 12 Months for Children in Out-of-Home Care 12 to 23 Months South Okaloosa County



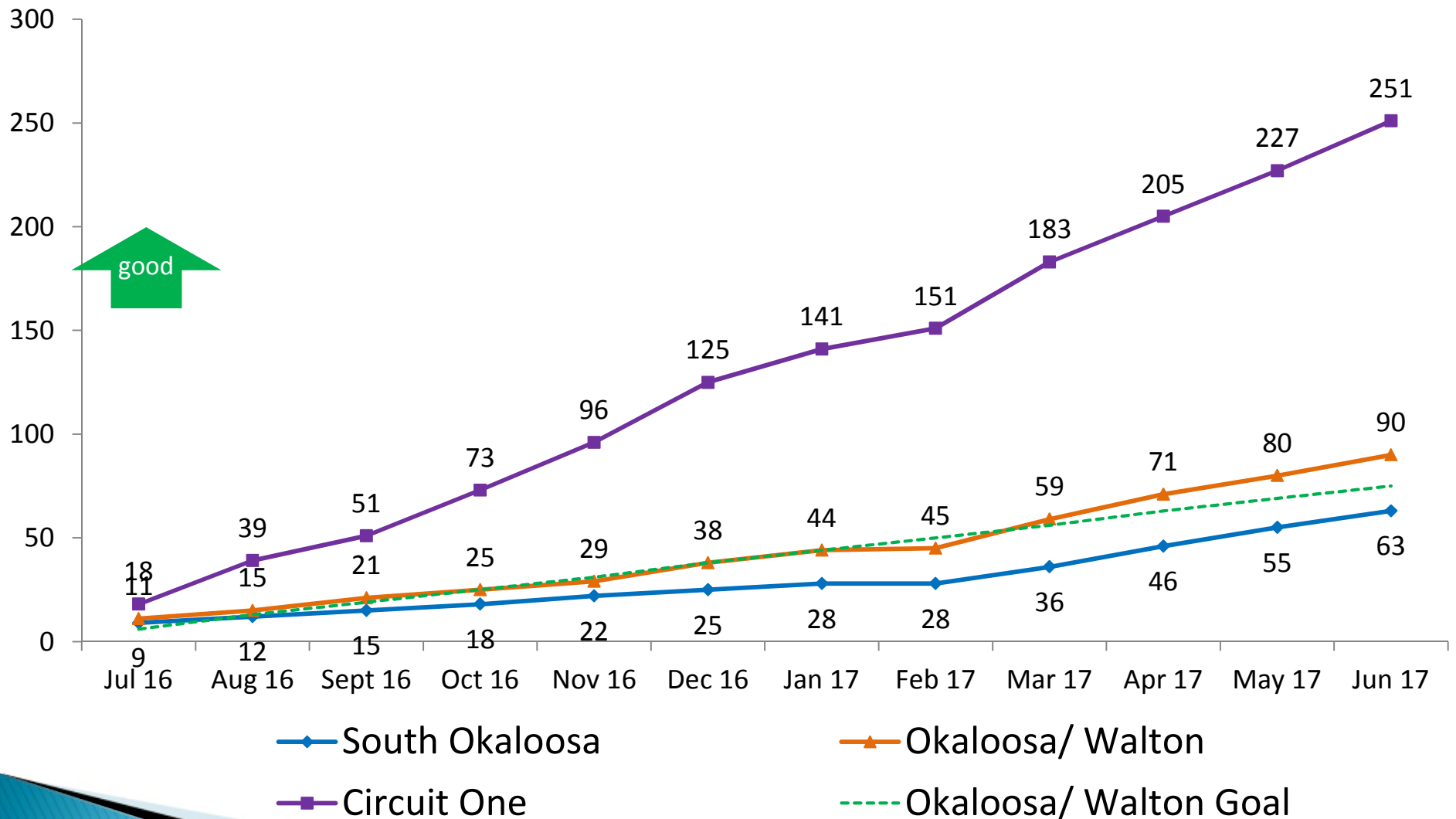
  
 good  
 goal= 43.6%



# Adoption Finalizations

## # of children with finalized adoptions (cumulative)

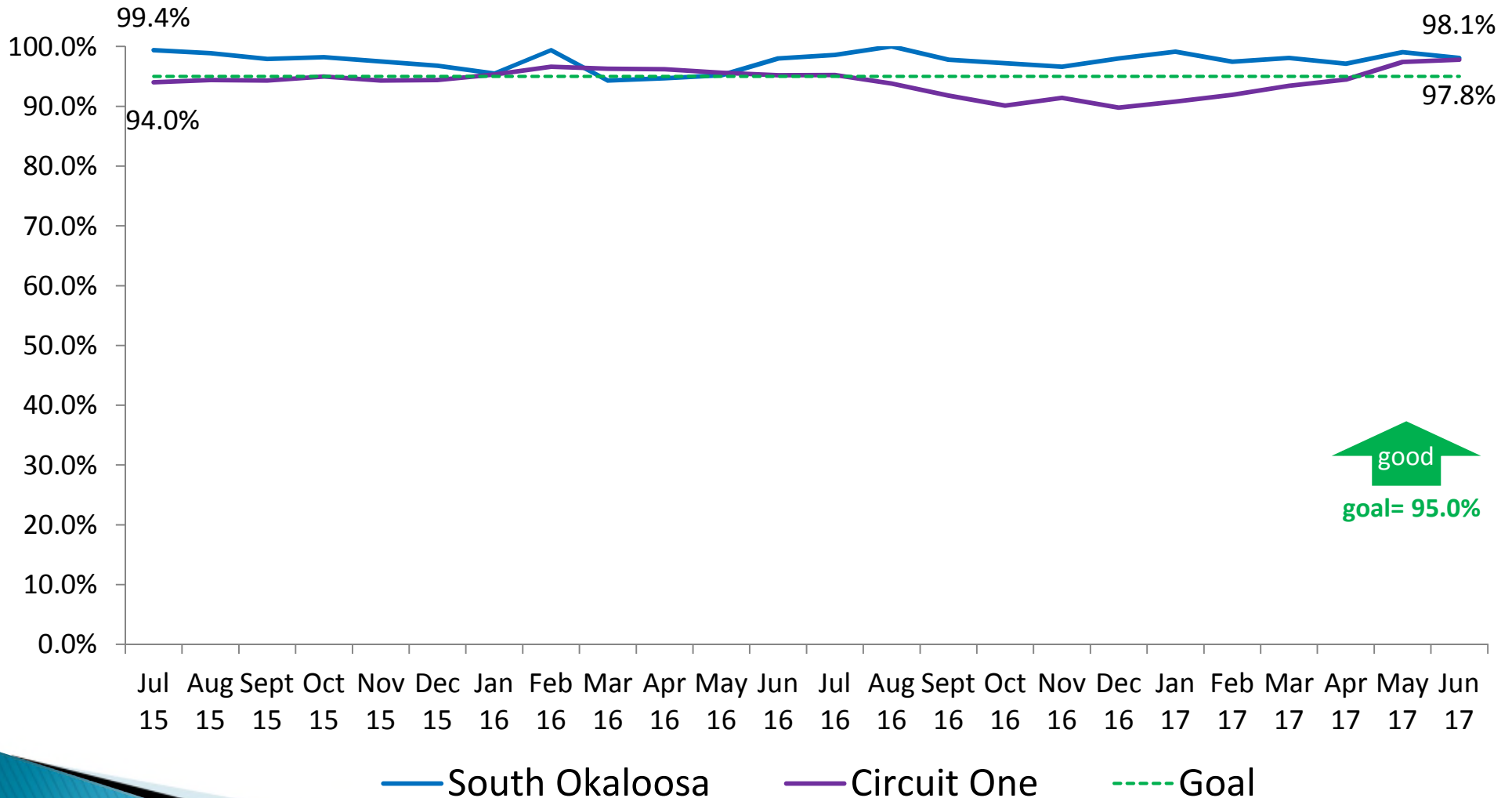
### Okaloosa/ Walton



# Performance Measures

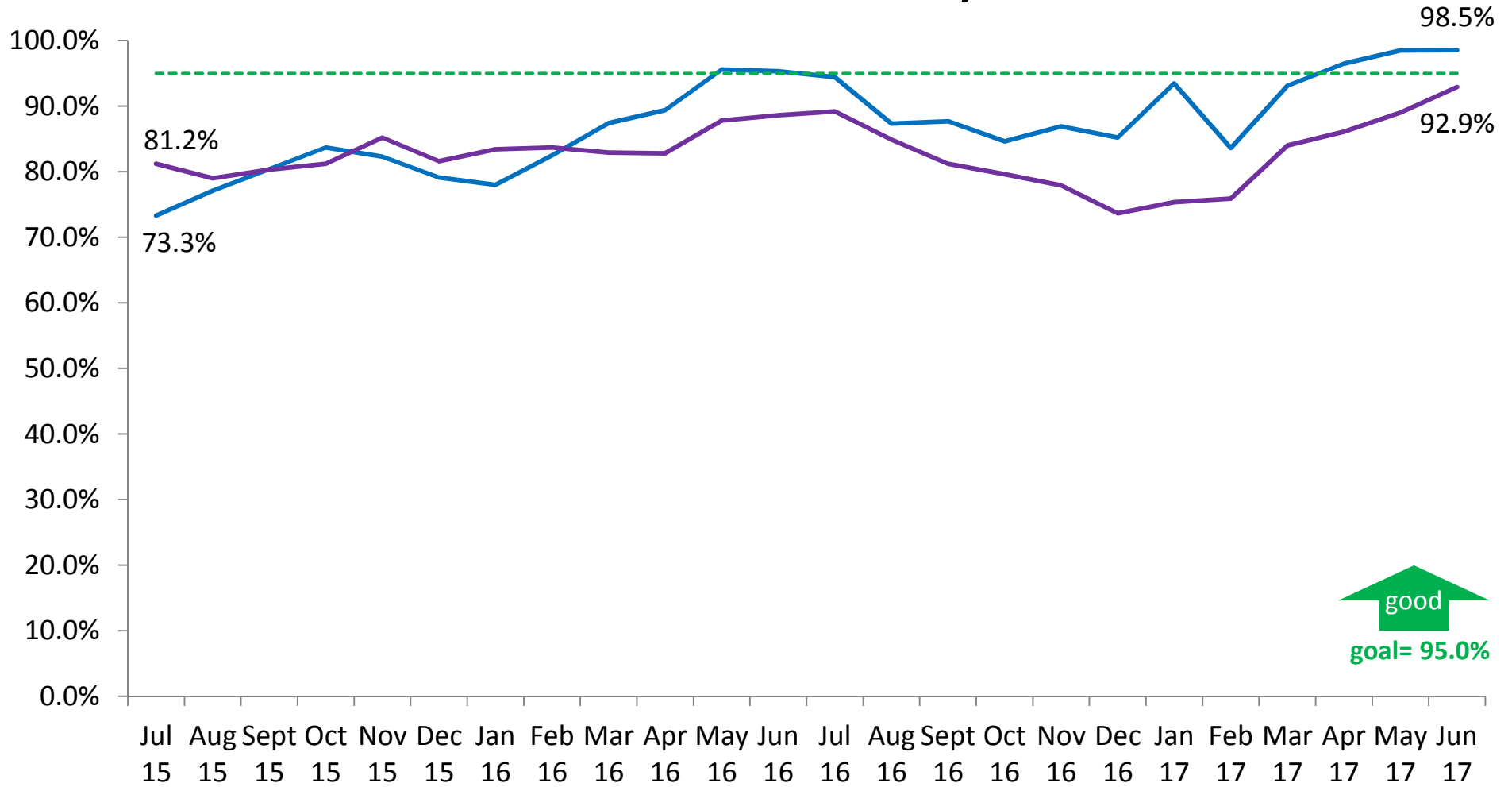
» Well-Being

# Children in Out-of-Home Care Who Received Medical Services within the Last 12 Months South Okaloosa County



  
 good  
 goal= 95.0%

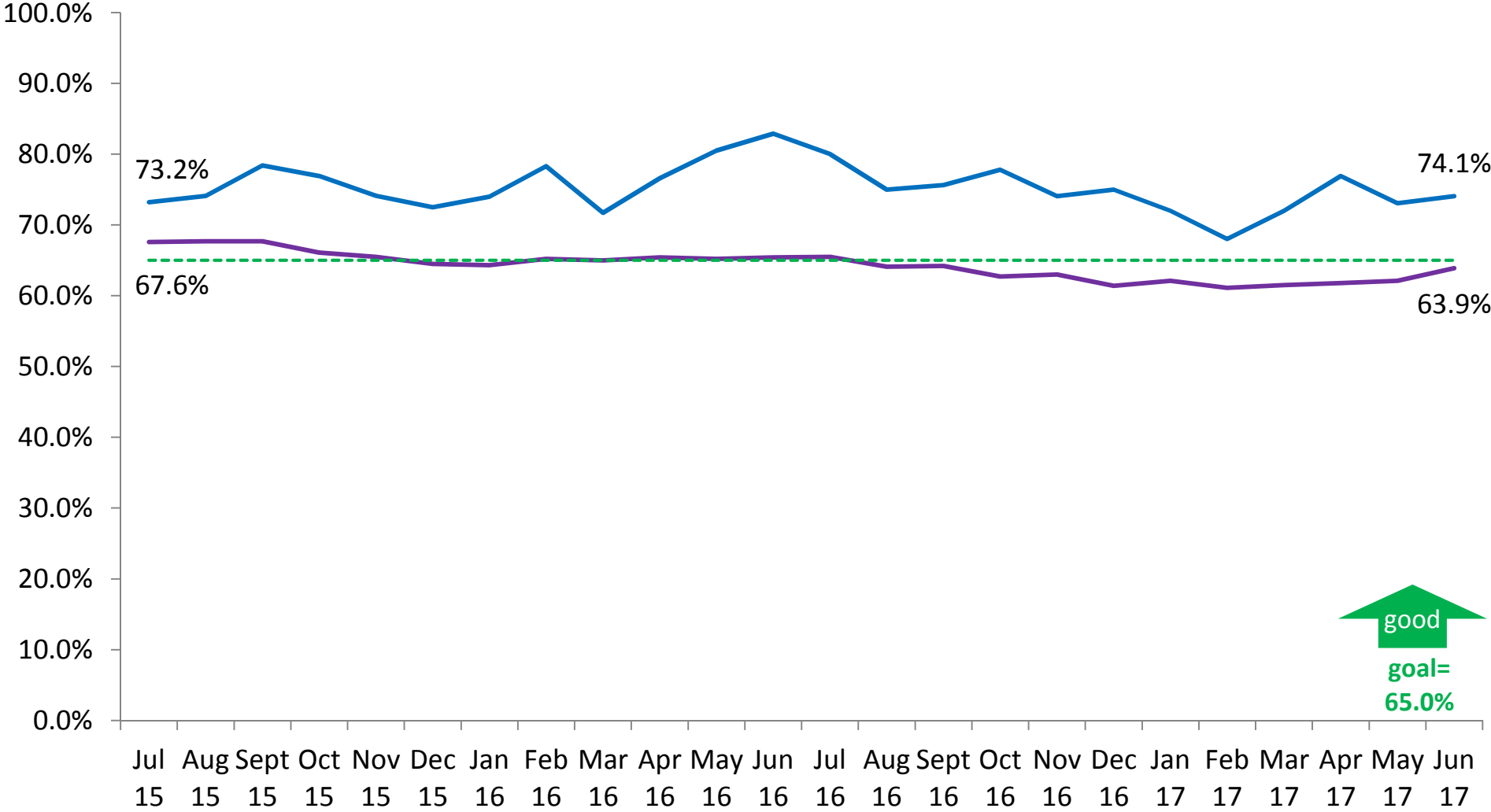
# Children in Out-of-Home Care Who Received Dental Services within the Last 7 Months South Okaloosa County



good  
goal= 95.0%

— South Okaloosa      — Circuit One      - - - Goal

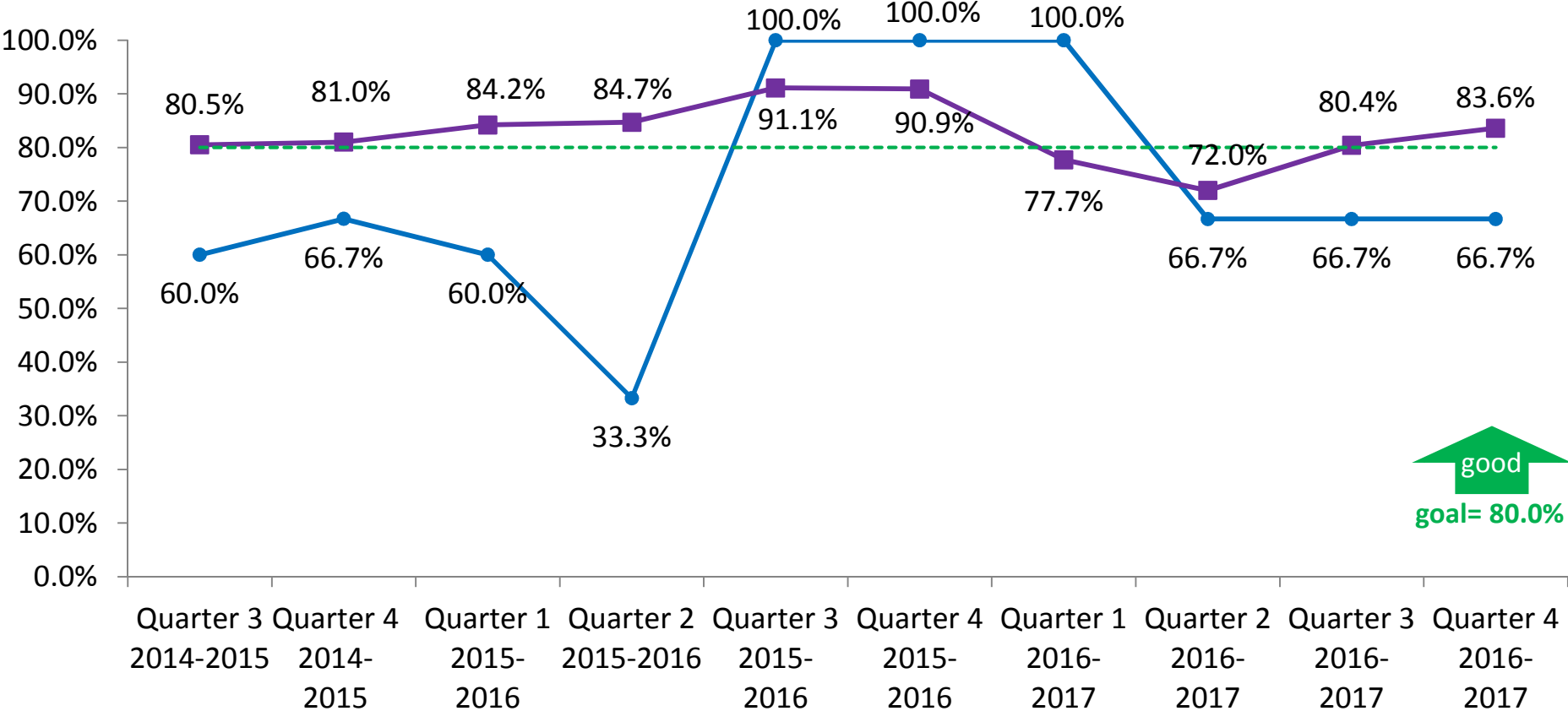
# Sibling Groups Where All Siblings Are Placed Together South Okaloosa County



good  
goal=  
65.0%

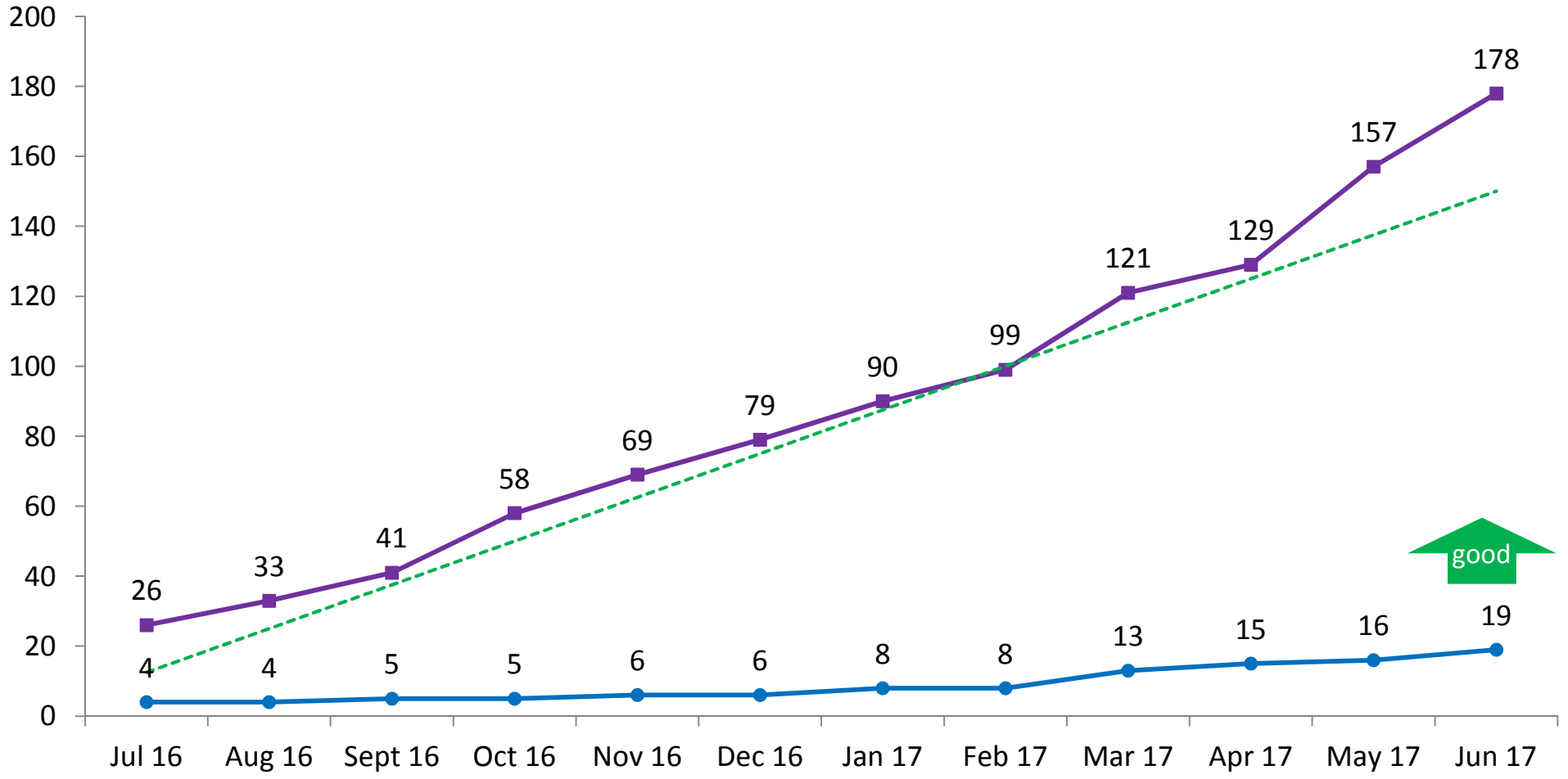
— South Okaloosa    — Circuit One    - - - Goal

# Young Adults Who Aged Out of Foster Care Who Have Completed or Are Enrolled in Secondary Education, Vocational Training, or Adult Education South Okaloosa County



● South Okaloosa    
 ■ Circuit One    
 - - - Goal

# Initial Foster Home Beds Licensed South Okaloosa County and Circuit One



—●— South Okaloosa Rolling Total

—■— Circuit One Rolling Total

- - - Circuit One Goal



# FFN and Contract Provider Foster Home Beds South Okaloosa

