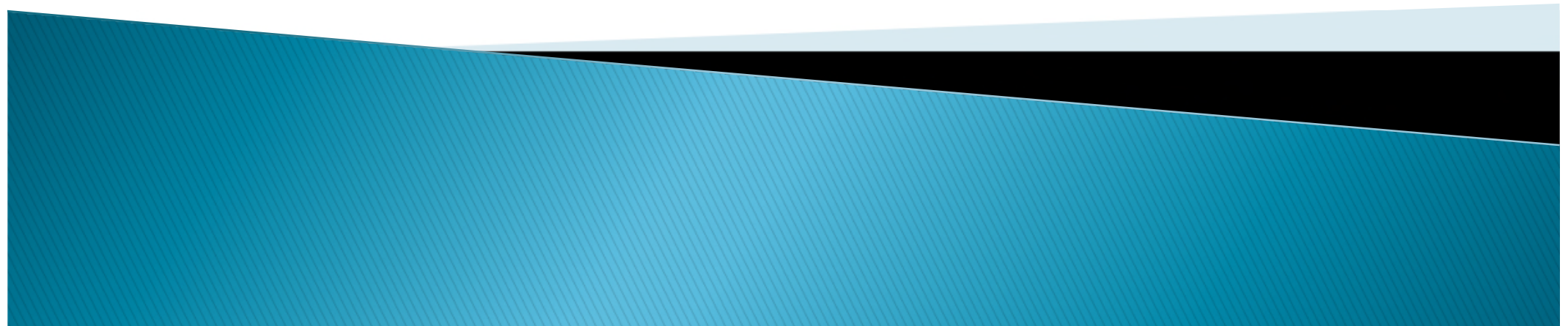


# North Okaloosa County Community Alliance Data

FamiliesFirst Network  
June 2017



# Trends and Updates

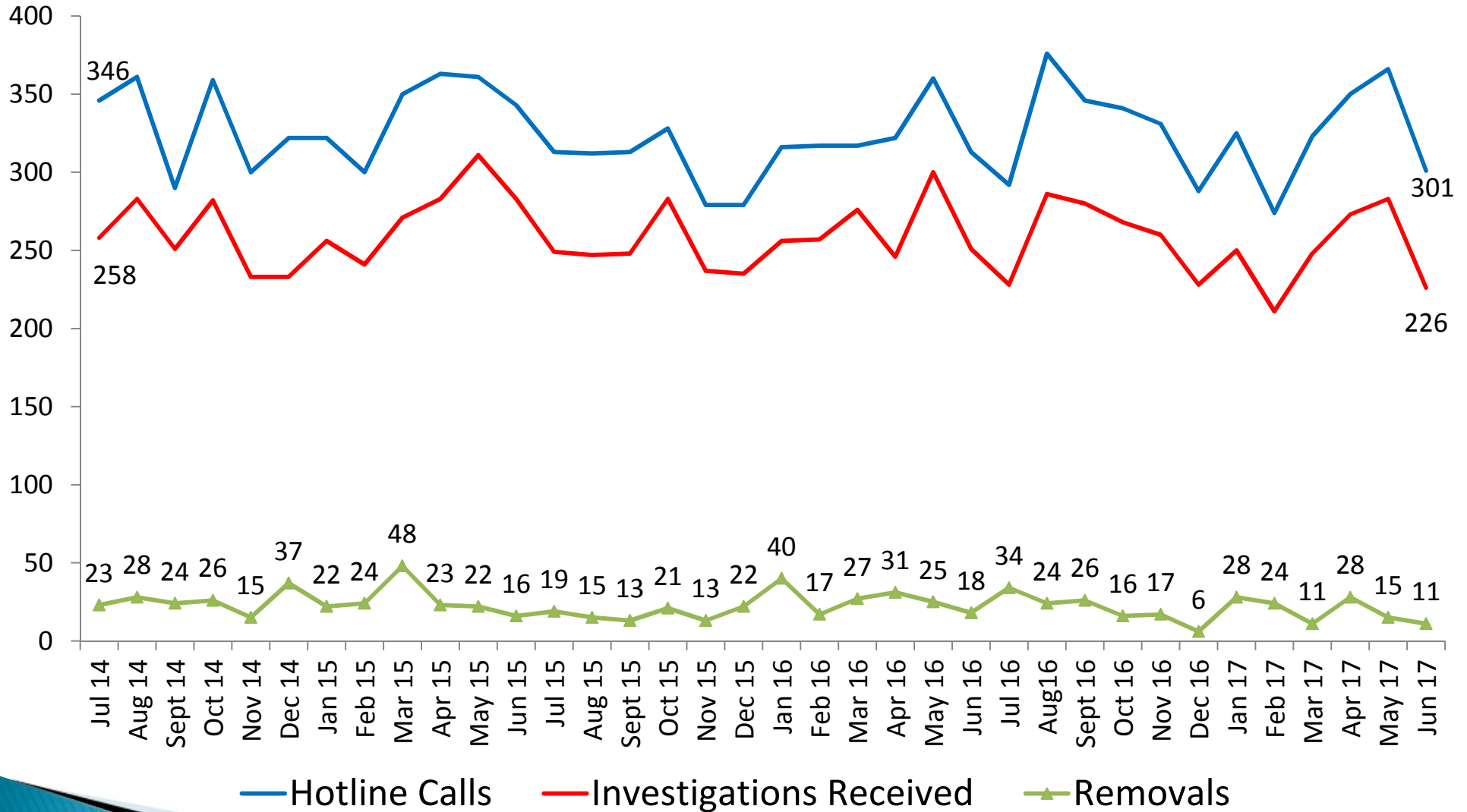
April to June 2017

- ▶ Okaloosa county removals spiked in April but decreased the last two months of the quarter.
- ▶ While the total number of children receiving services in North Okaloosa county increased 7.2% from the previous quarter, children in out-of-home care have not increased.
- ▶ The number of children in group homes had a significant decrease this quarter.
- ▶ Reducing the caseload average continues to be a focus. At the end of June, two vacancies remained and two new staff members were in pre-service training leaving eight Family Services Counselors with a caseload.
- ▶ The performance measure targets have been met or exceeded for the following measures:
  - Children under supervision seen every 30 days
  - Children who do not re-enter out-of-home care within 12 months of moving to a permanent home.
- ▶ North Okaloosa has had a net gain of 2 traditional foster home beds since June 30, 2016.
- ▶ North Okaloosa has 44 traditional foster homes with a total capacity of 98 beds as of June 30, 2017.

# Investigations Summary

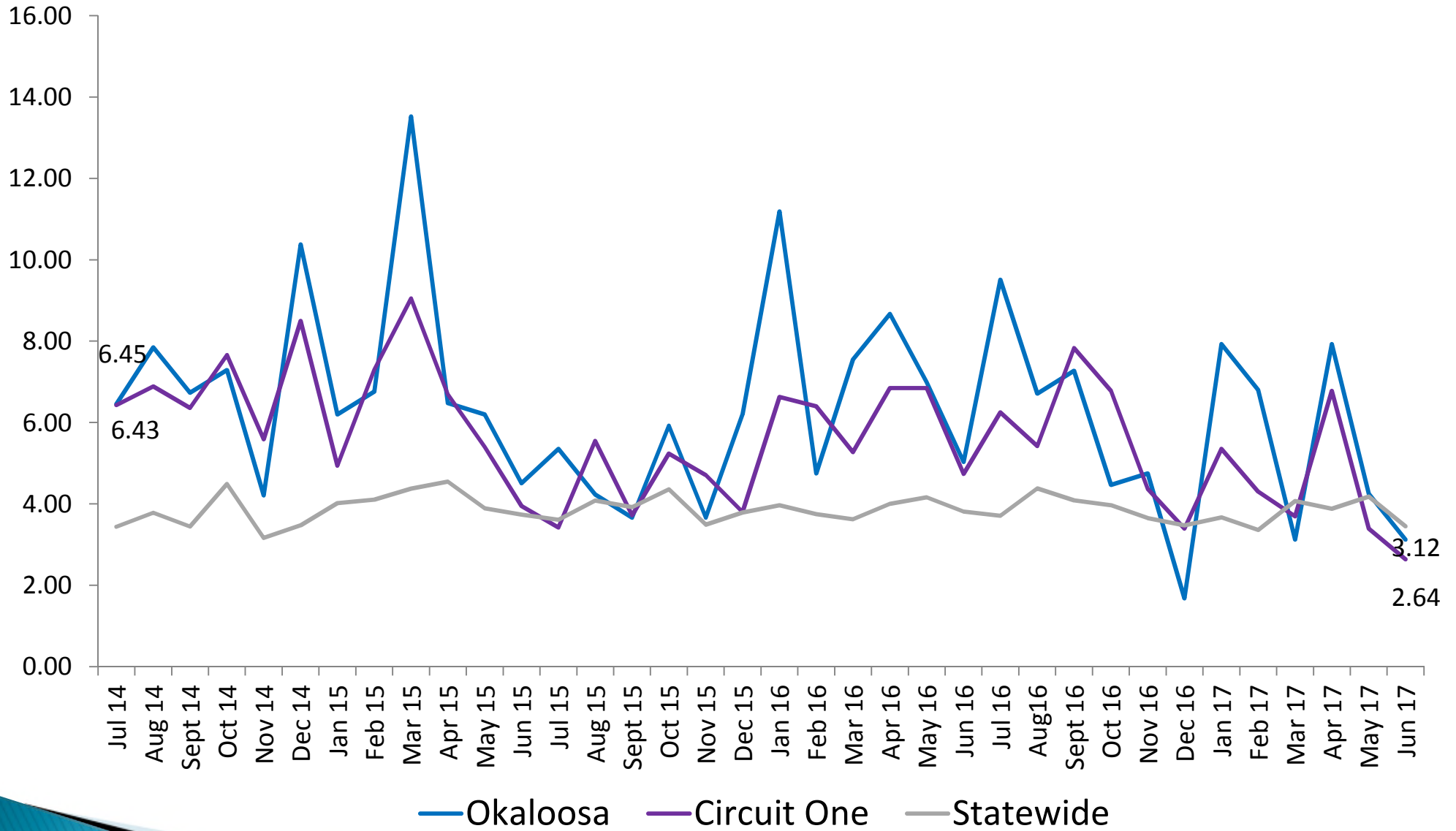
»» Hotline Calls, Investigations, and Removals

# Comparison of Hotline Calls, Investigations Received, and Removals Okaloosa County



# Removal Rate Per 1,000 Children

## Comparison of Okaloosa County, Circuit One, and State

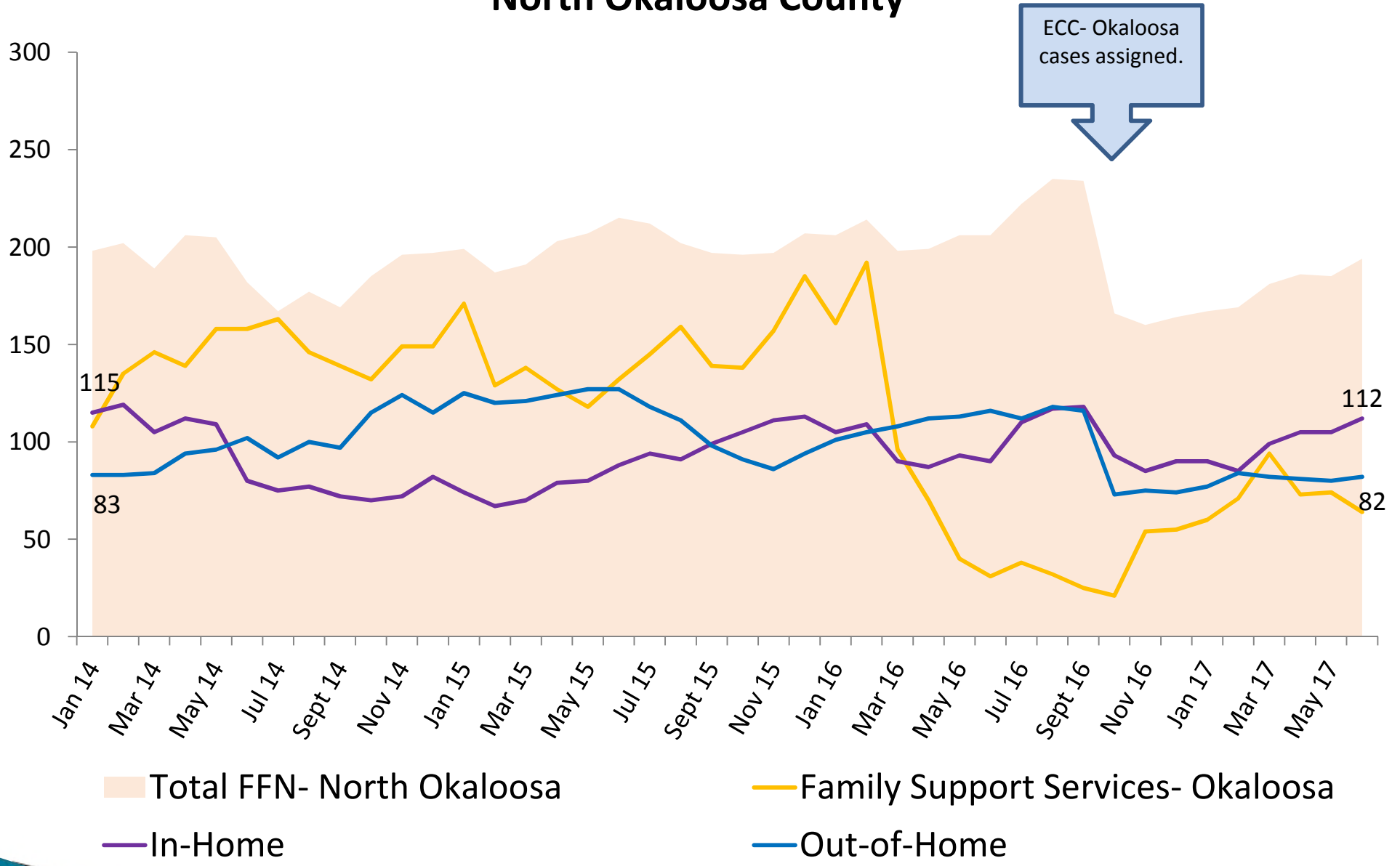


# Children Receiving Services



# Children Receiving Services by Service Type

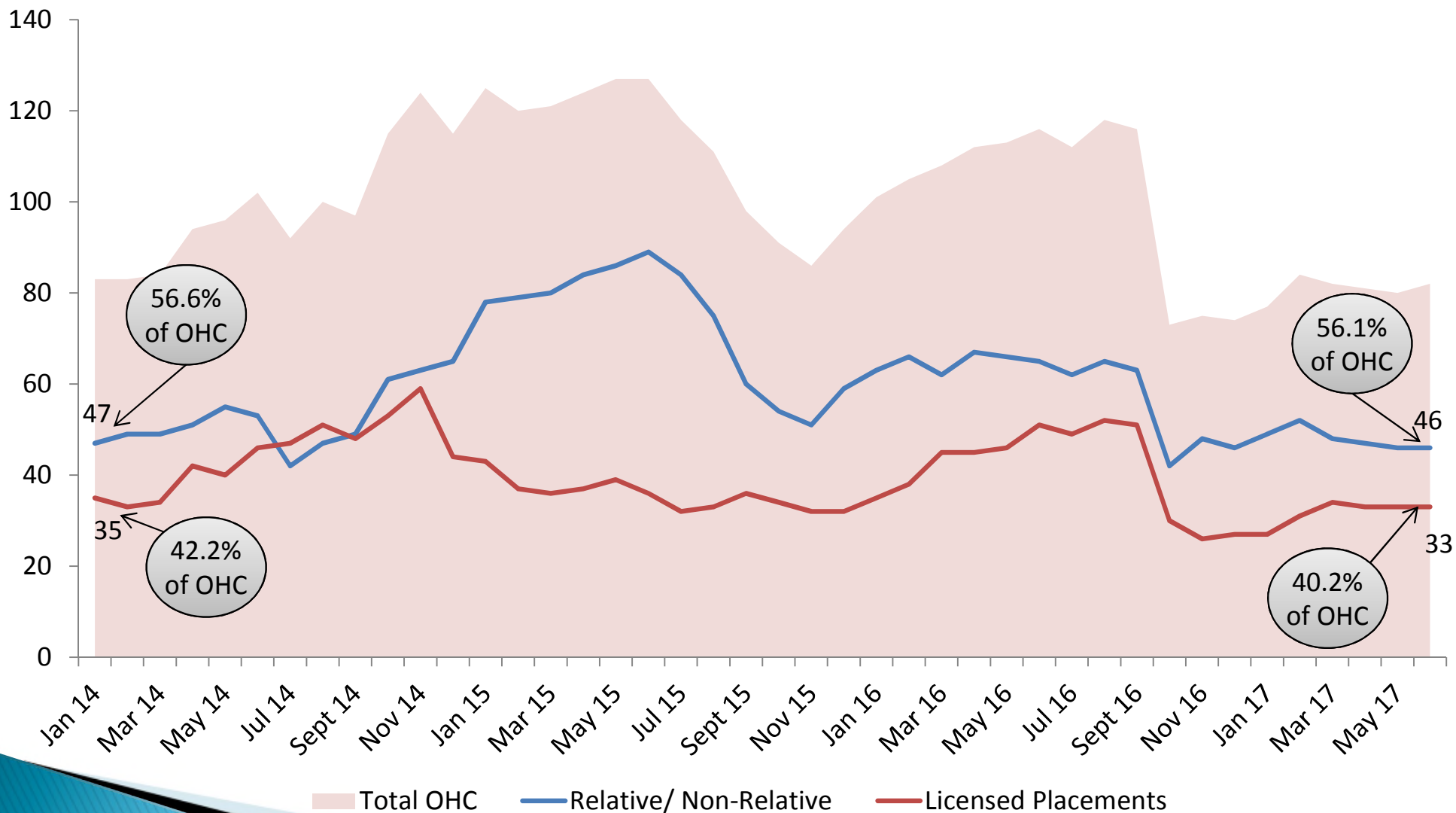
## North Okaloosa County



ECC- Okaloosa cases assigned.



# Comparison of Children in Out-of-Home Care and Type of Placement North Okaloosa County

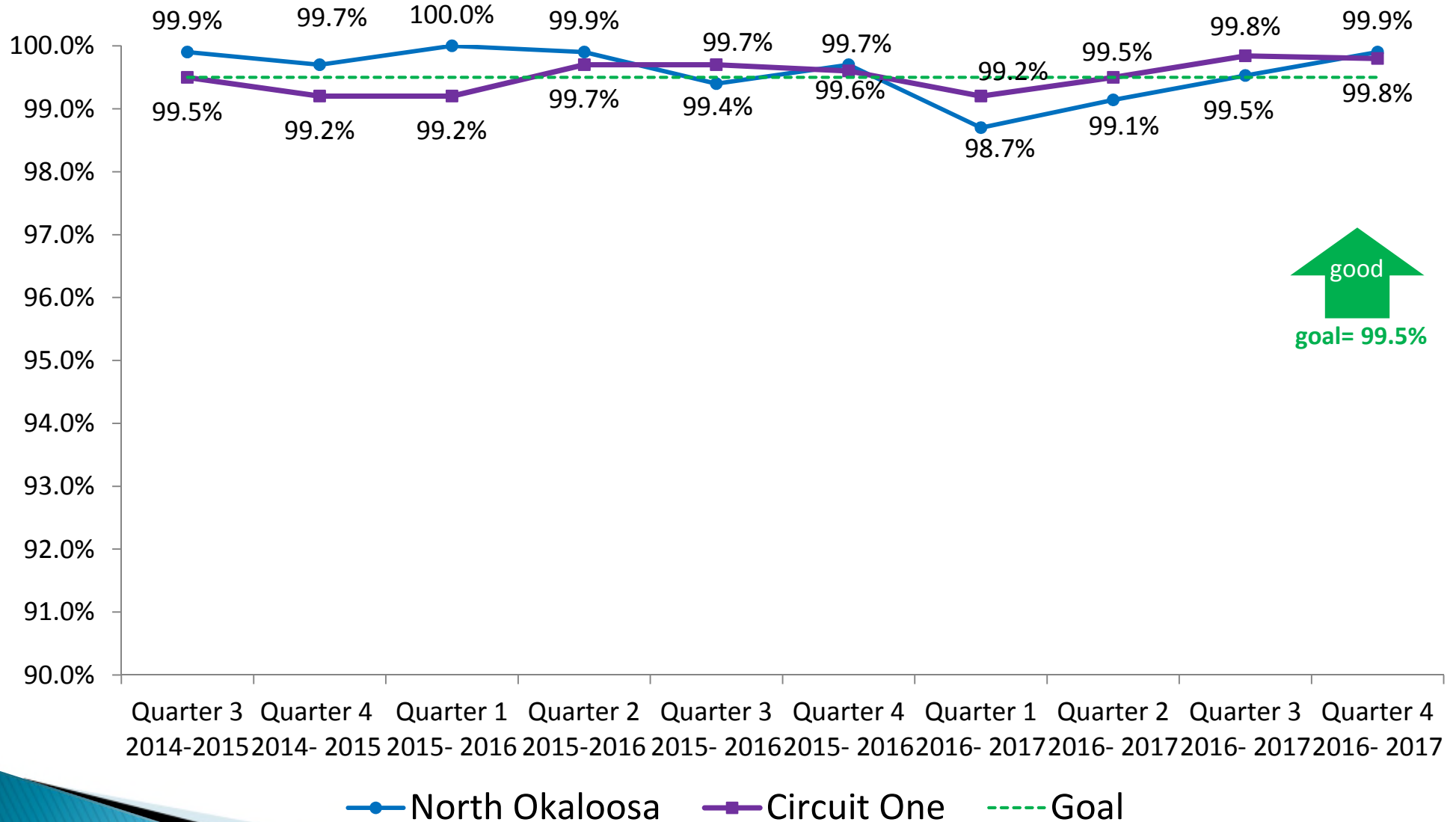




# Performance Measures

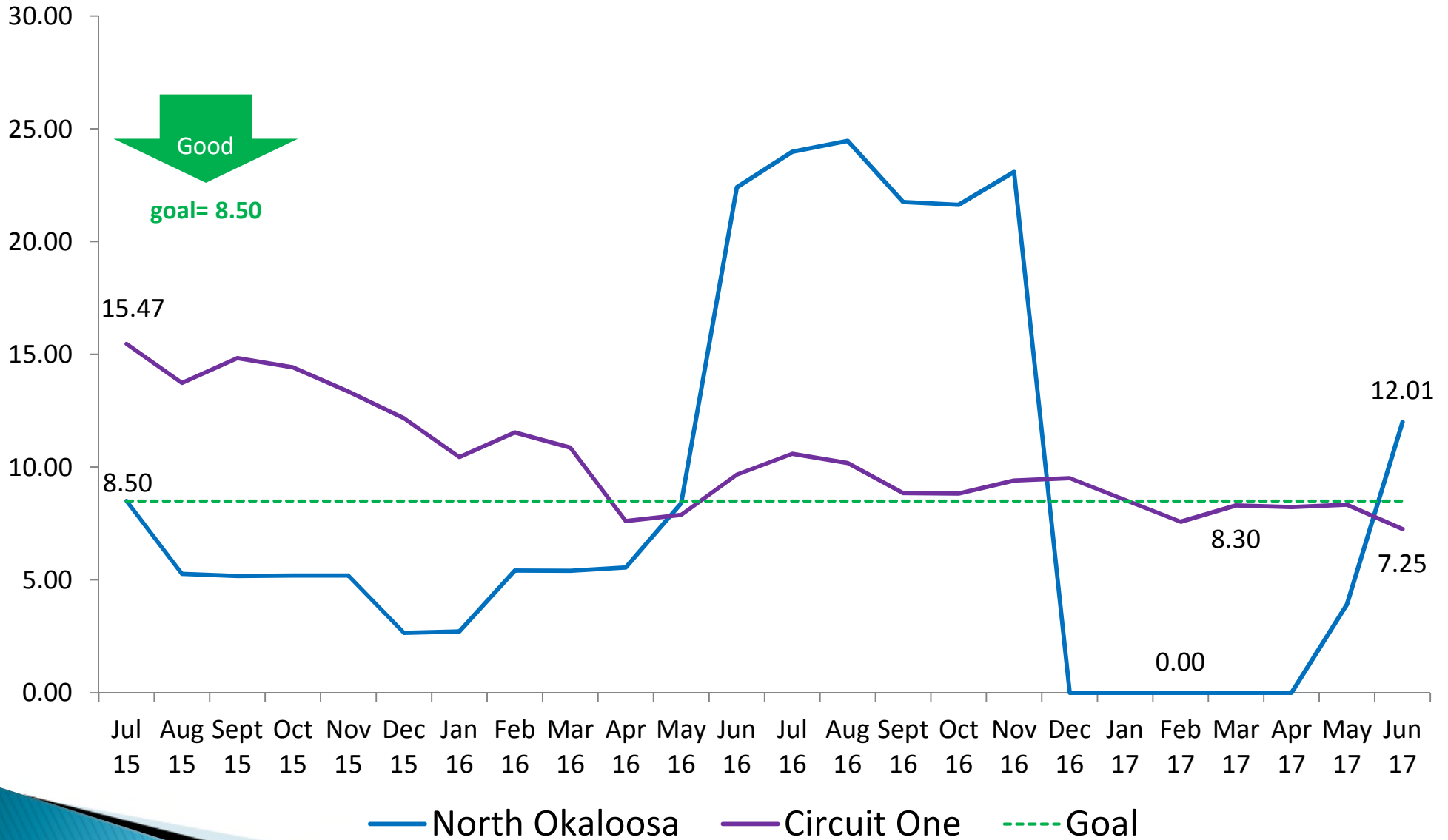
» Safety

# Percent of Children Under Supervision Seen Every 30 Days North Okaloosa County



good  
goal= 99.5%

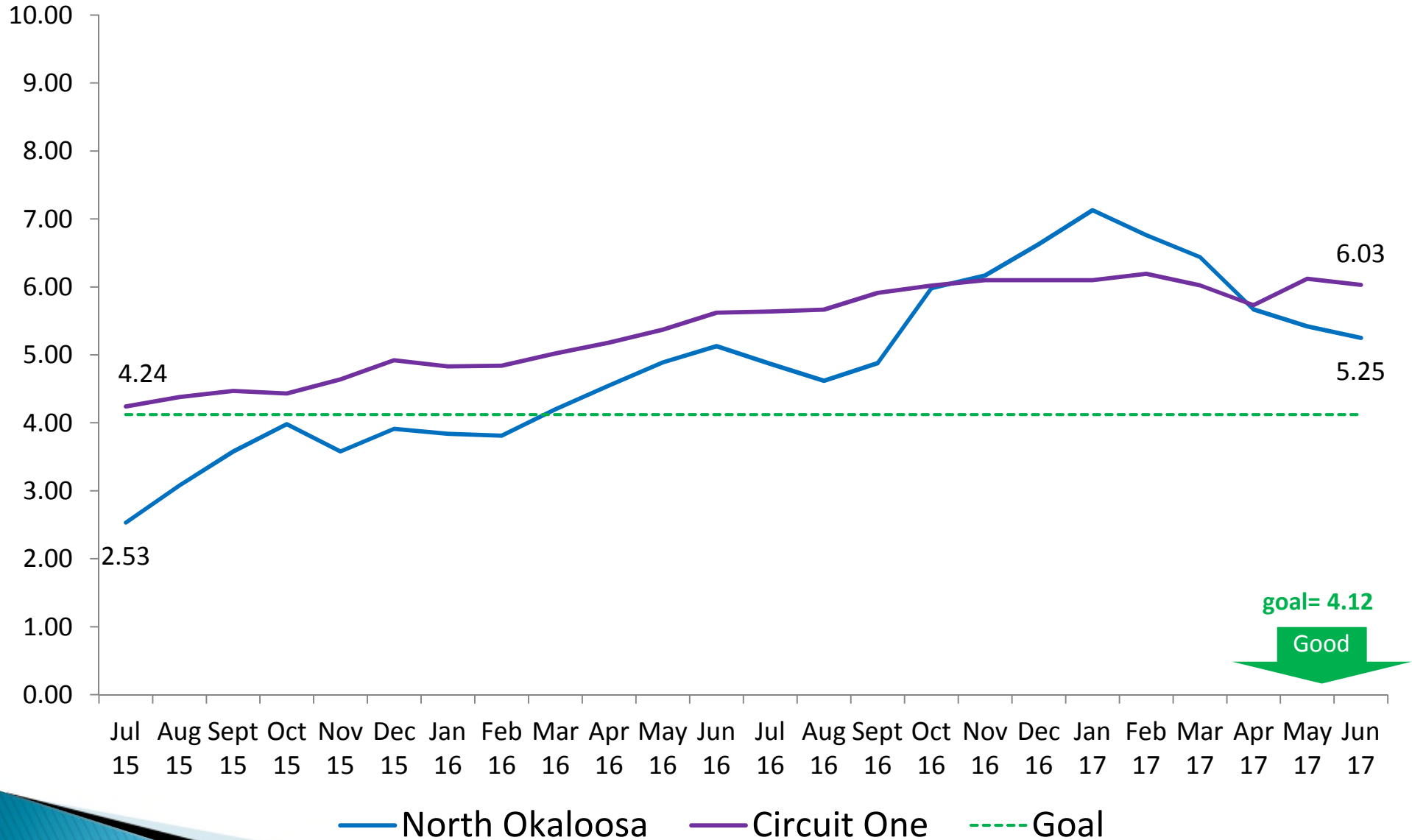
# Rate of Abuse or Neglect per Day While in Out-of-Home Care North Okaloosa County



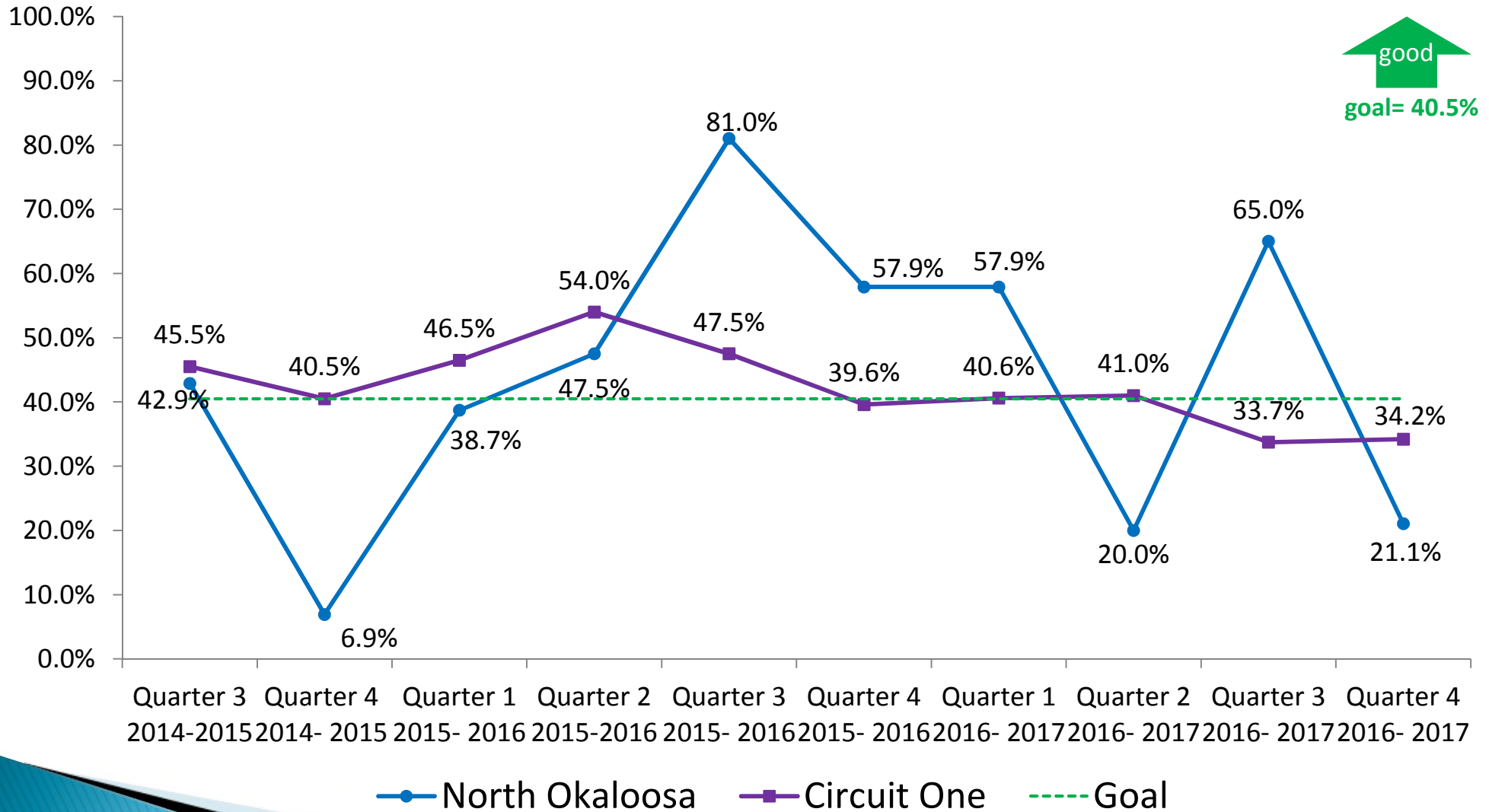
# Performance Measures

» Permanency

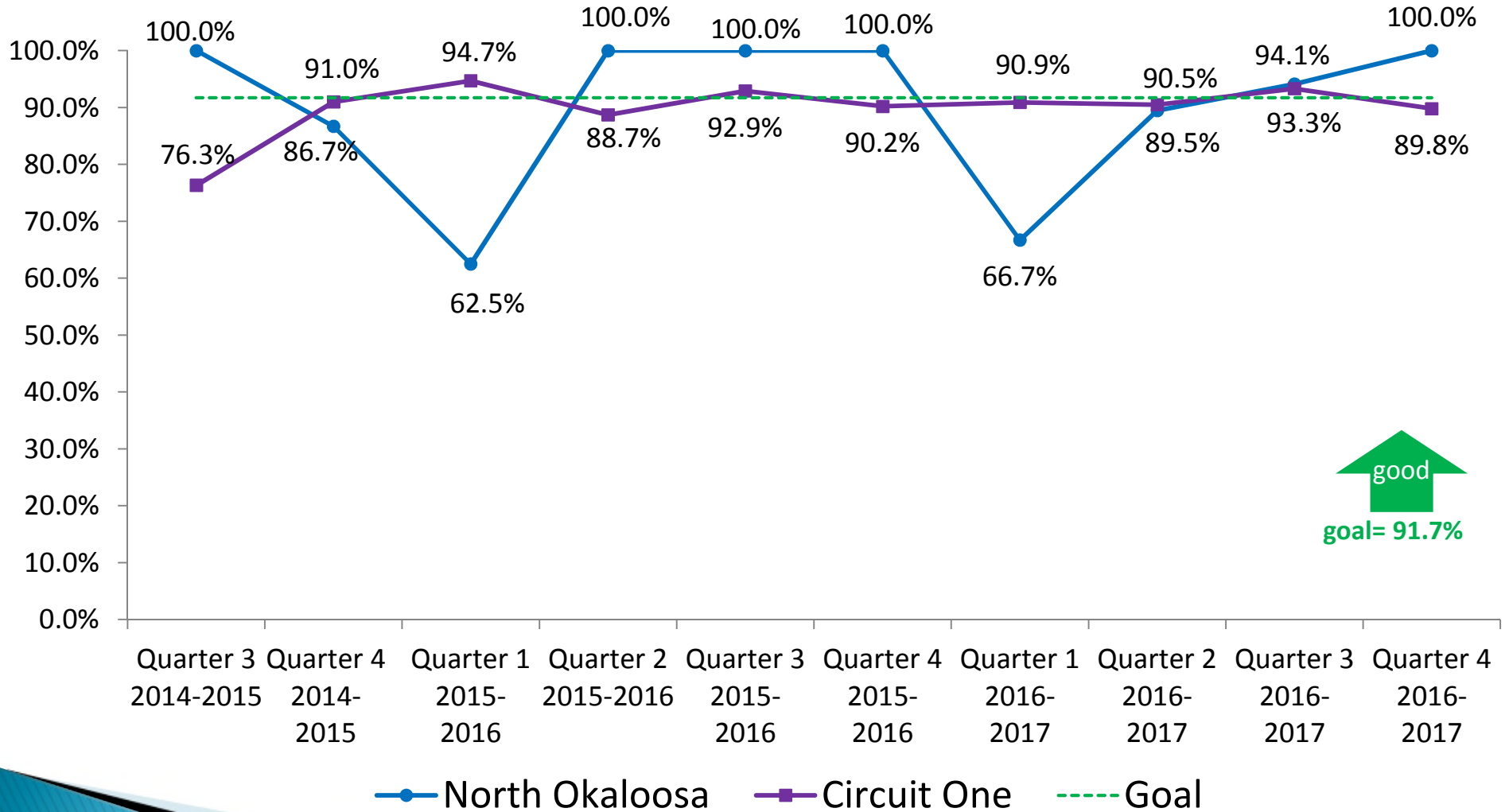
# Rate of Placement Moves Per 1,000 Days in Out-of-Home Care North Okaloosa County



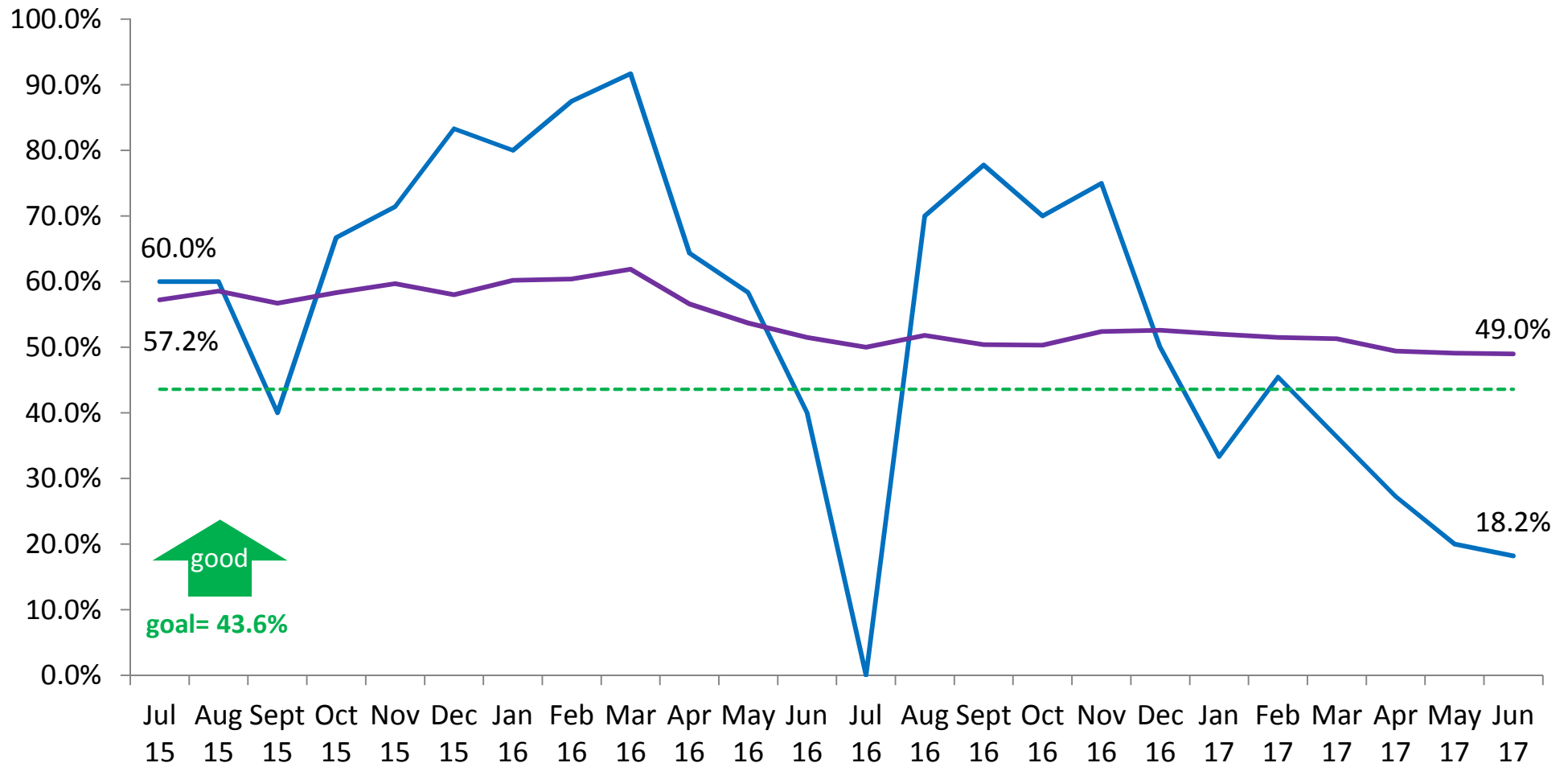
# Children Exiting Out-of-Home Care to a Permanent Home within 12 Months North Okaloosa County



# Children Who Do Not Re-Enter Out-of-Home Care within 12 Months of Moving to a Permanent Home North Okaloosa County



# Children Achieving Permanency in 12 Months for Children in Out-of-Home Care 12 to 23 Months North Okaloosa County



↑  
good  
goal= 43.6%

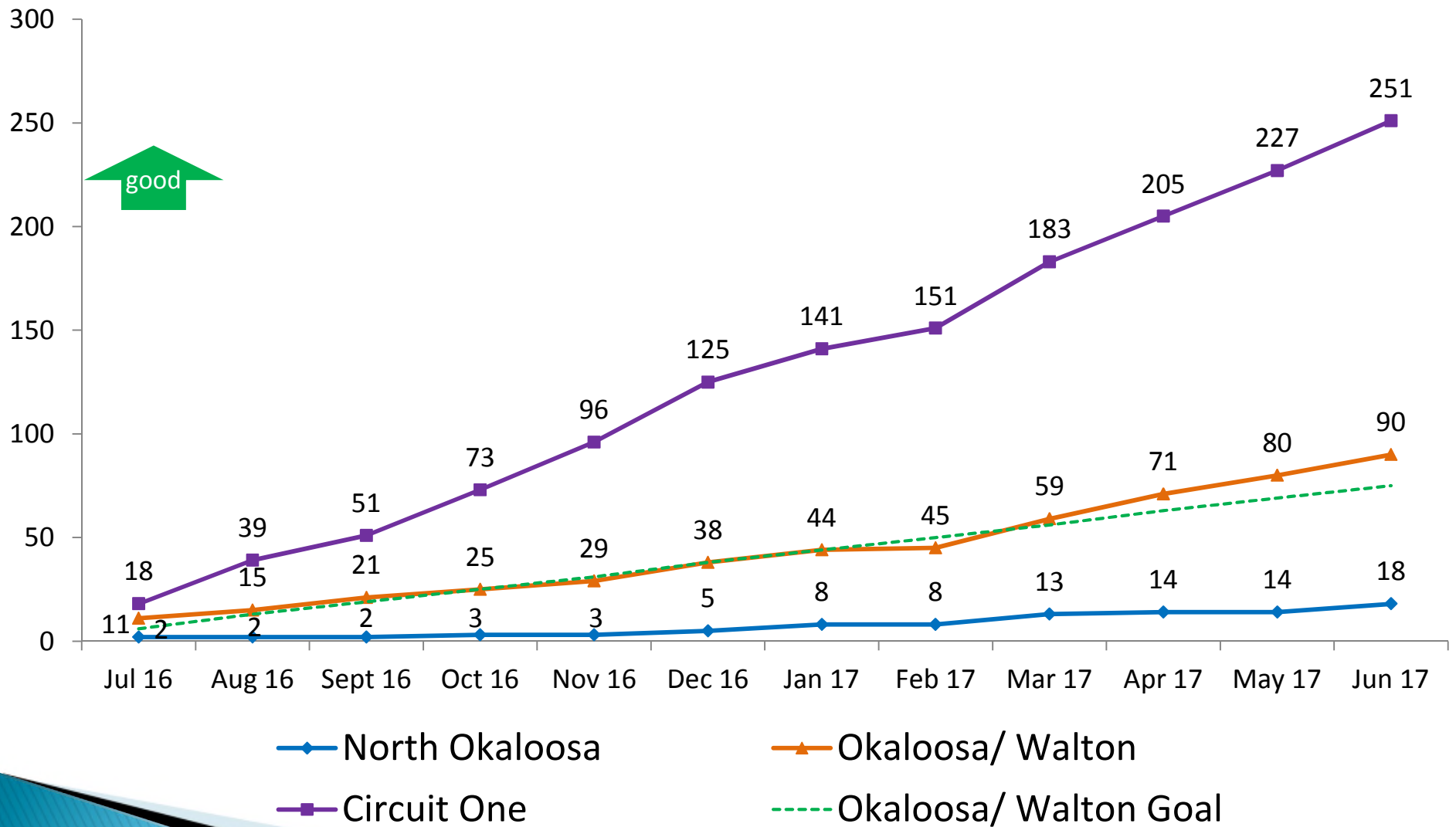
— North Okaloosa    
 — Circuit One    
 - - - Goal



# Adoption Finalizations

## # of children with finalized adoptions (cumulative)

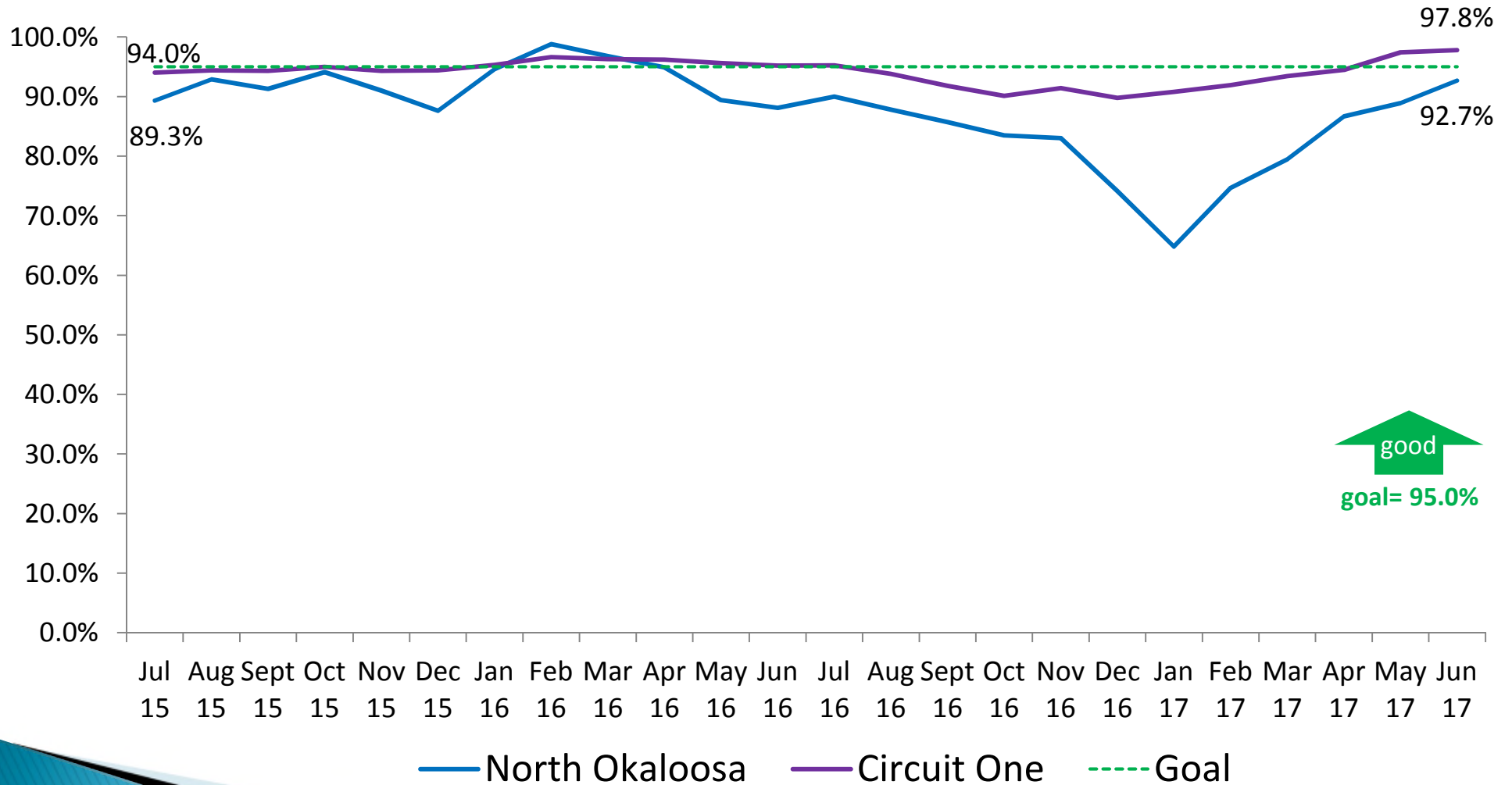
### Okaloosa/ Walton



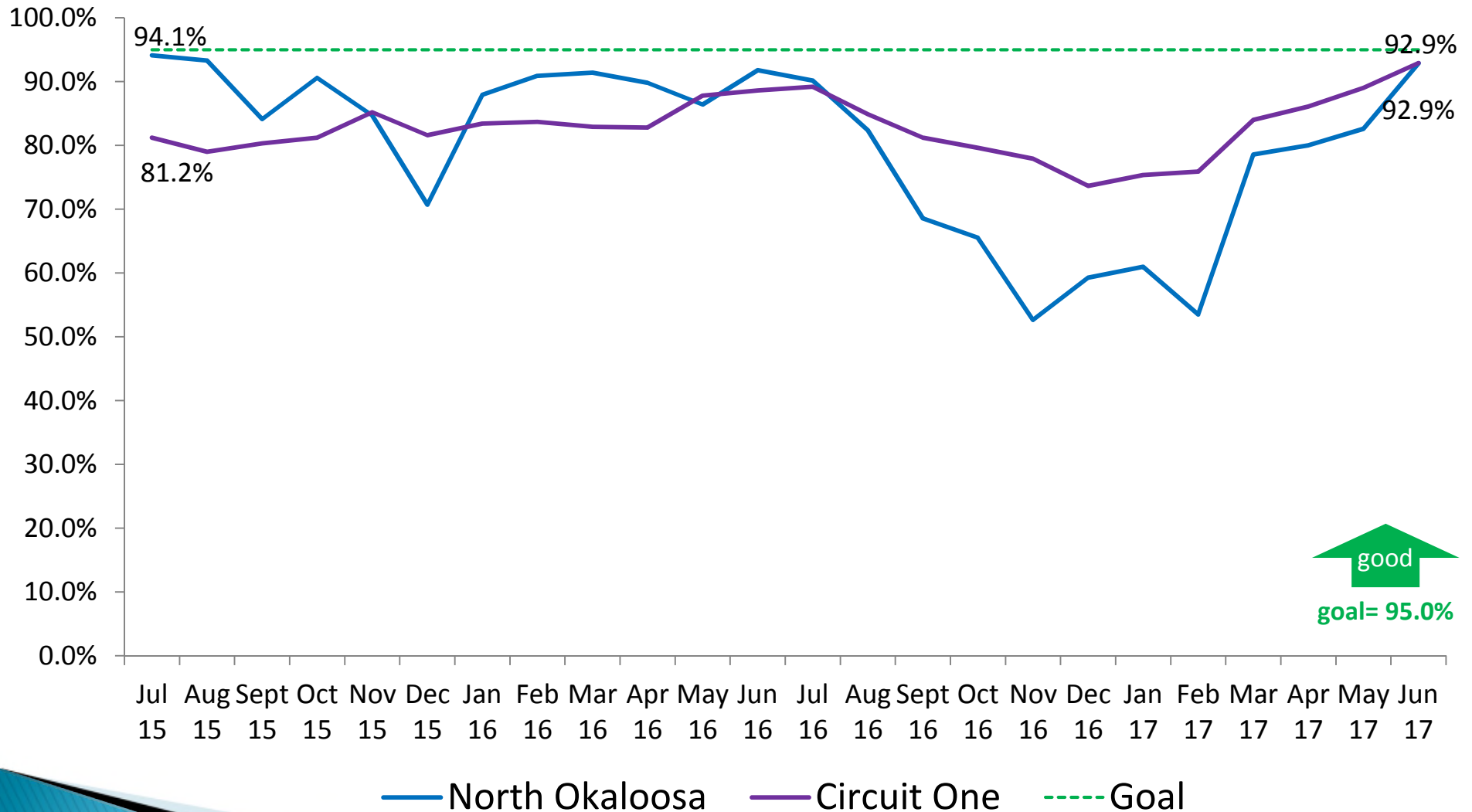
# Performance Measures

» Well-Being

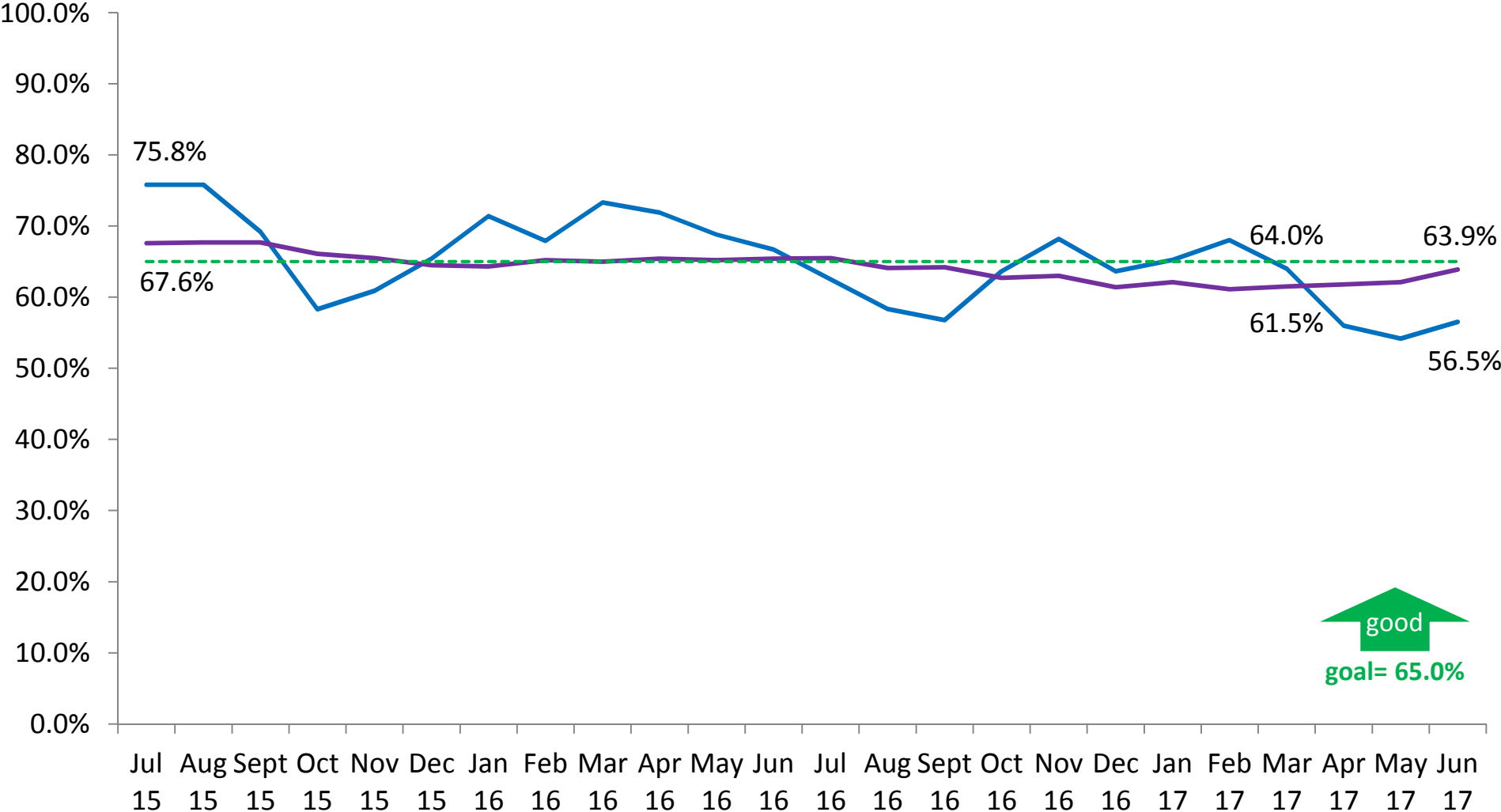
# Children in Out-of-Home Care Who Received Medical Services within the Last 12 Months North Okaloosa County



# Children in Out-of-Home Care Who Received Dental Services within the Last 7 Months North Okaloosa County



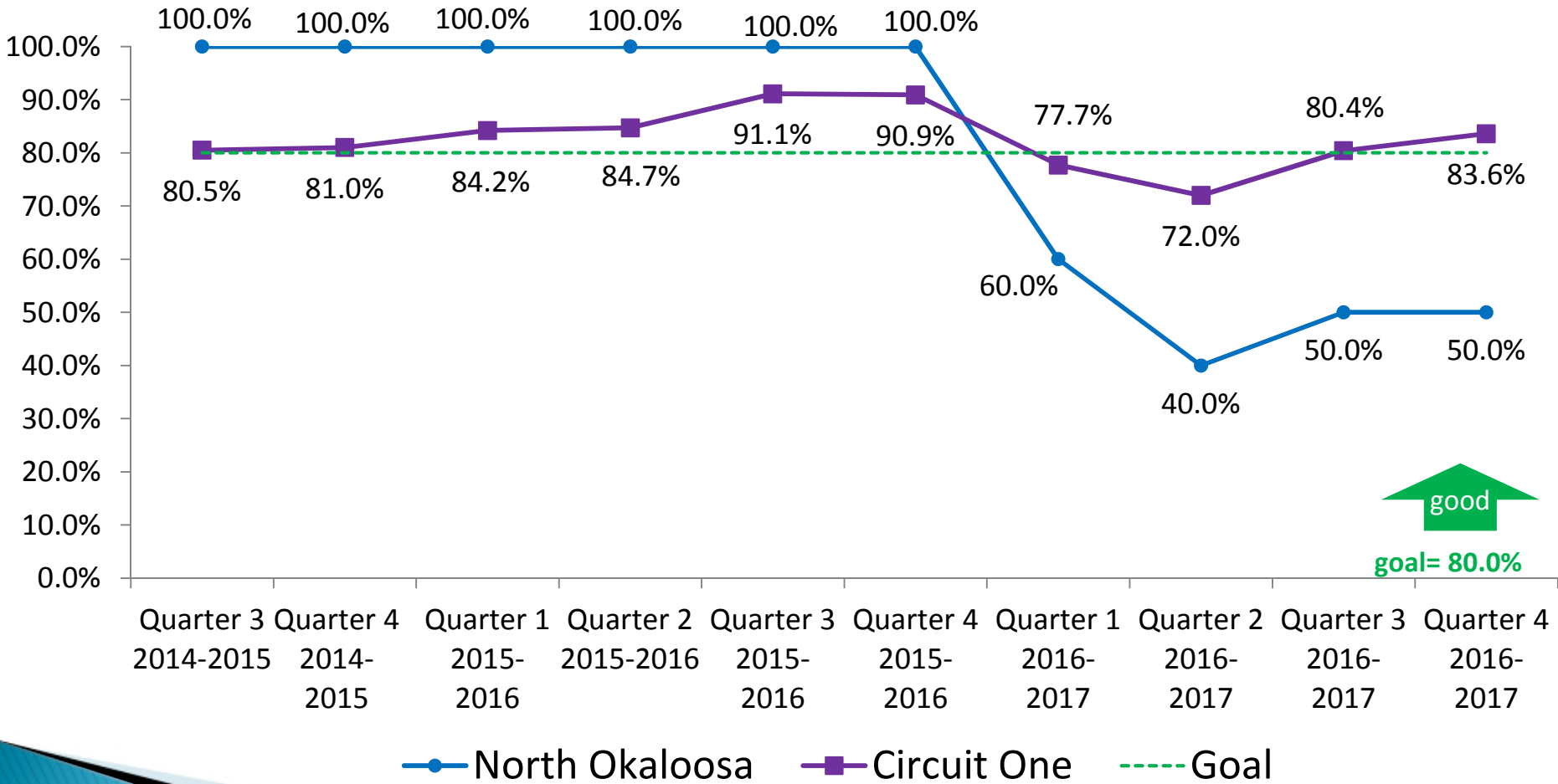
# Sibling Groups Where All Siblings Are Placed Together North Okaloosa County



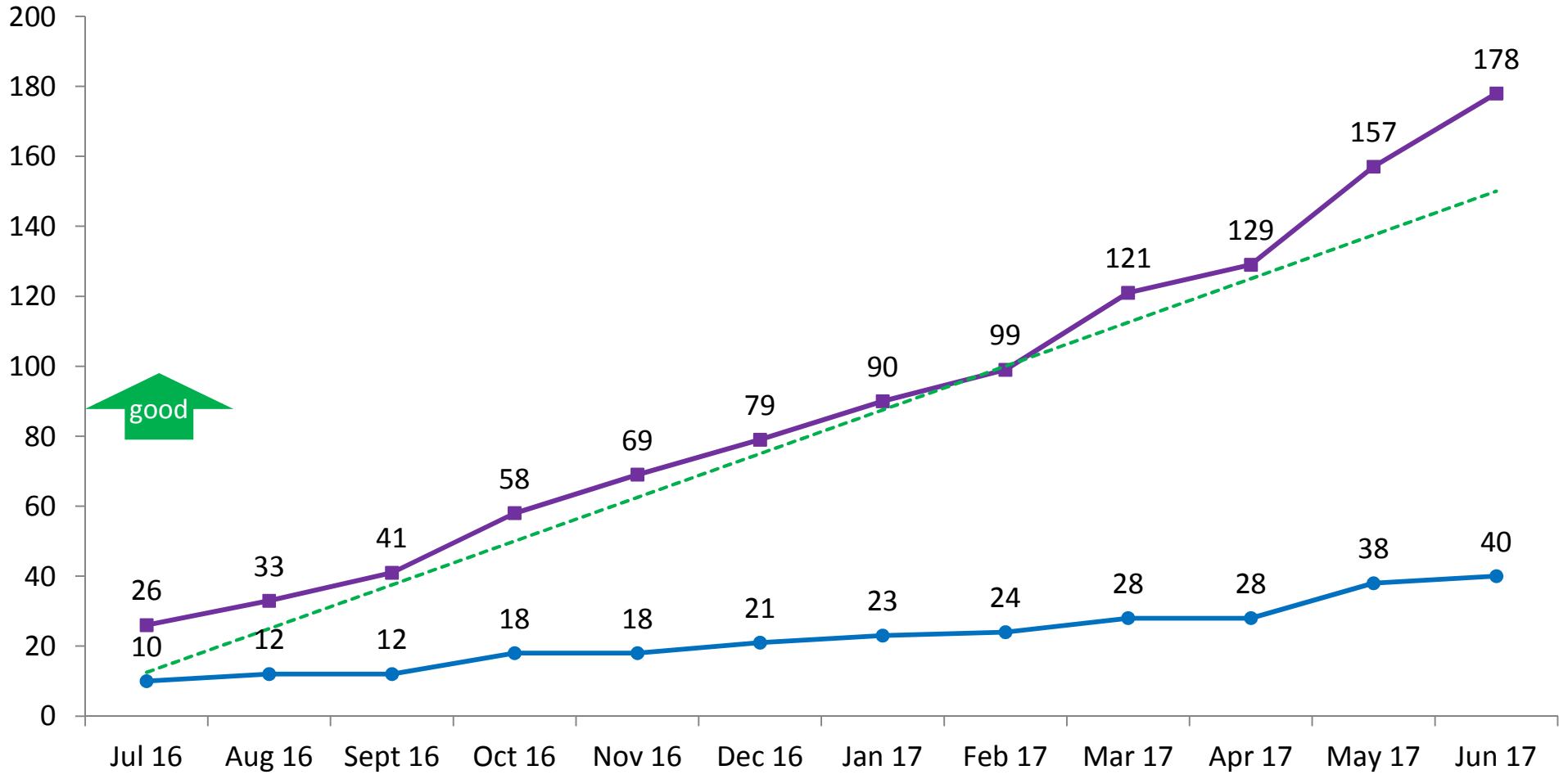
good  
goal= 65.0%

— North Okaloosa — Circuit One - - - - Goal

# Young Adults Who Aged Out of Foster Care Who Have Completed or Are Enrolled in Secondary Education, Vocational Training, or Adult Education North Okaloosa County



# Initial Foster Home Beds Licensed North Okaloosa County and Circuit One



—●— North Okaloosa Rolling Total

—■— Circuit One Rolling Total

- - - Circuit One Goal

# FFN and Contract Provider Foster Home Beds North Okaloosa

