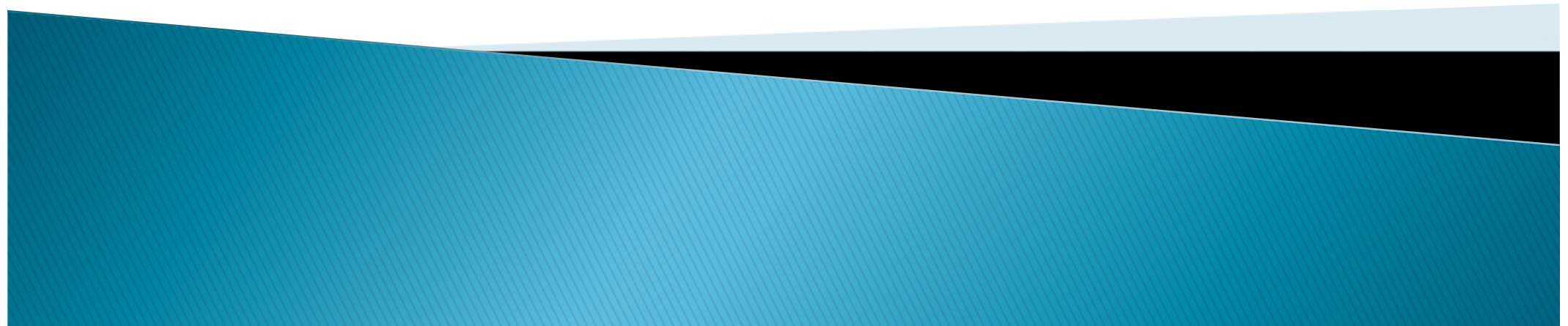


# Escambia County Community Alliance Data

FamiliesFirst Network  
June 2017



# Trends and Updates

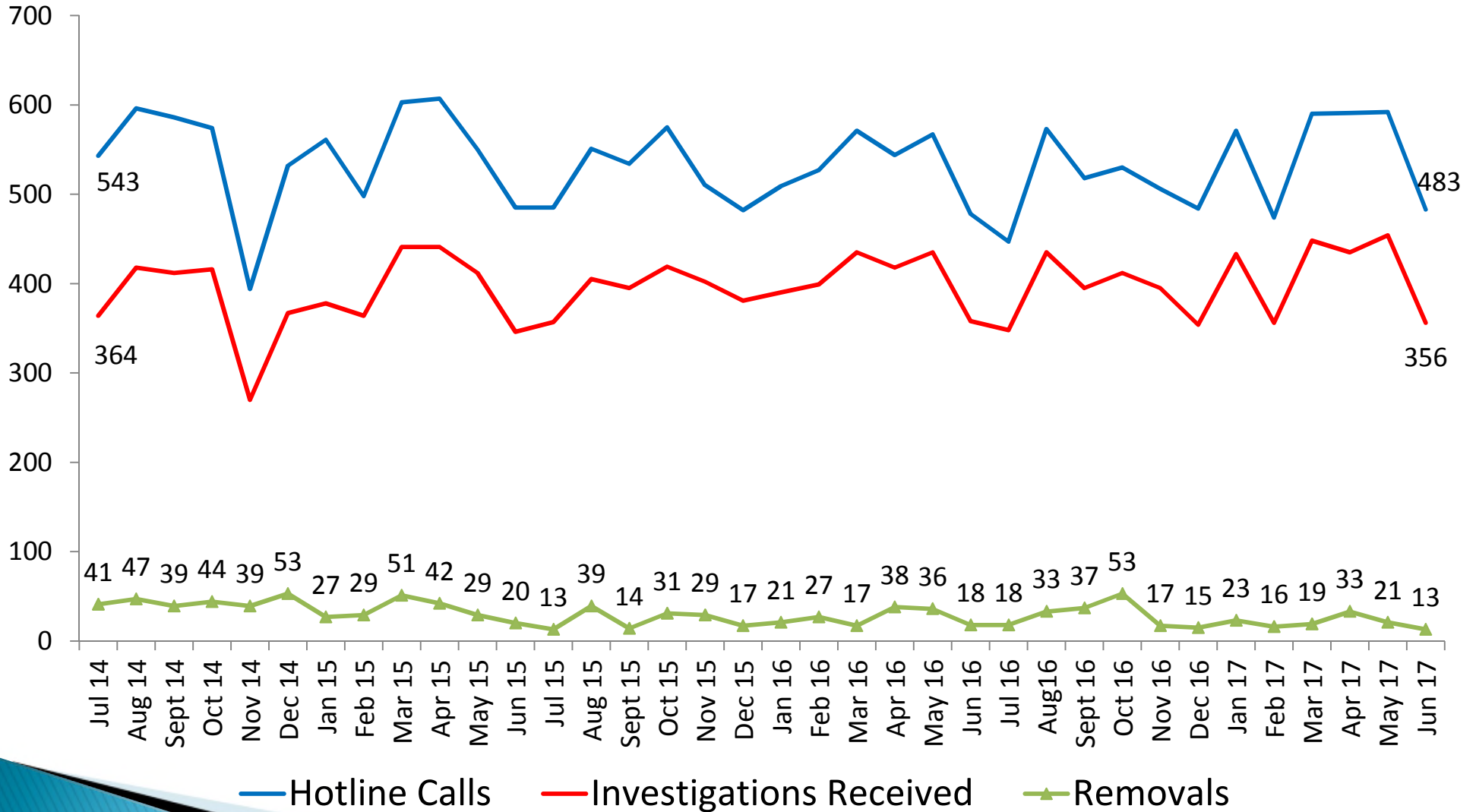
April to June 2017

- ▶ While the removal rate was elevated in April, June's rate was the lowest rate to date in Escambia county.
- ▶ There has been an 15.9% increase of children in out-of-home care since August 2016.
- ▶ While the number of children placed in licensed placements has remained fairly steady, there has been a 32.7% increase in the number of relative/ non-relative placements since August 2016.
- ▶ As of June 30, 2017, 56.9% of children in out-of-home care placements are placed with a relative or non-relative.
- ▶ The performance measure targets have been met or exceeded for the following measures:
  - Children under supervision seen every 30 days
  - Rate of abuse or neglect per day while in out-of-home care
  - Children achieving permanency in 12 months for children in out-of-home care 12 to 23 months
  - Children in out-of-home care who received medical services within the last 12 months
  - Children in out-of-home care who received dental services within the last 7 months
  - Young adults who aged out of foster care who have completed or are enrolled in secondary education, vocational training, or adult education
- ▶ Escambia county has had a net loss of 12 traditional foster home beds since June 30, 2016.
- ▶ Escambia county has 104 traditional foster homes with a total capacity of 212 beds as of June 30, 2017.

# Investigations Summary

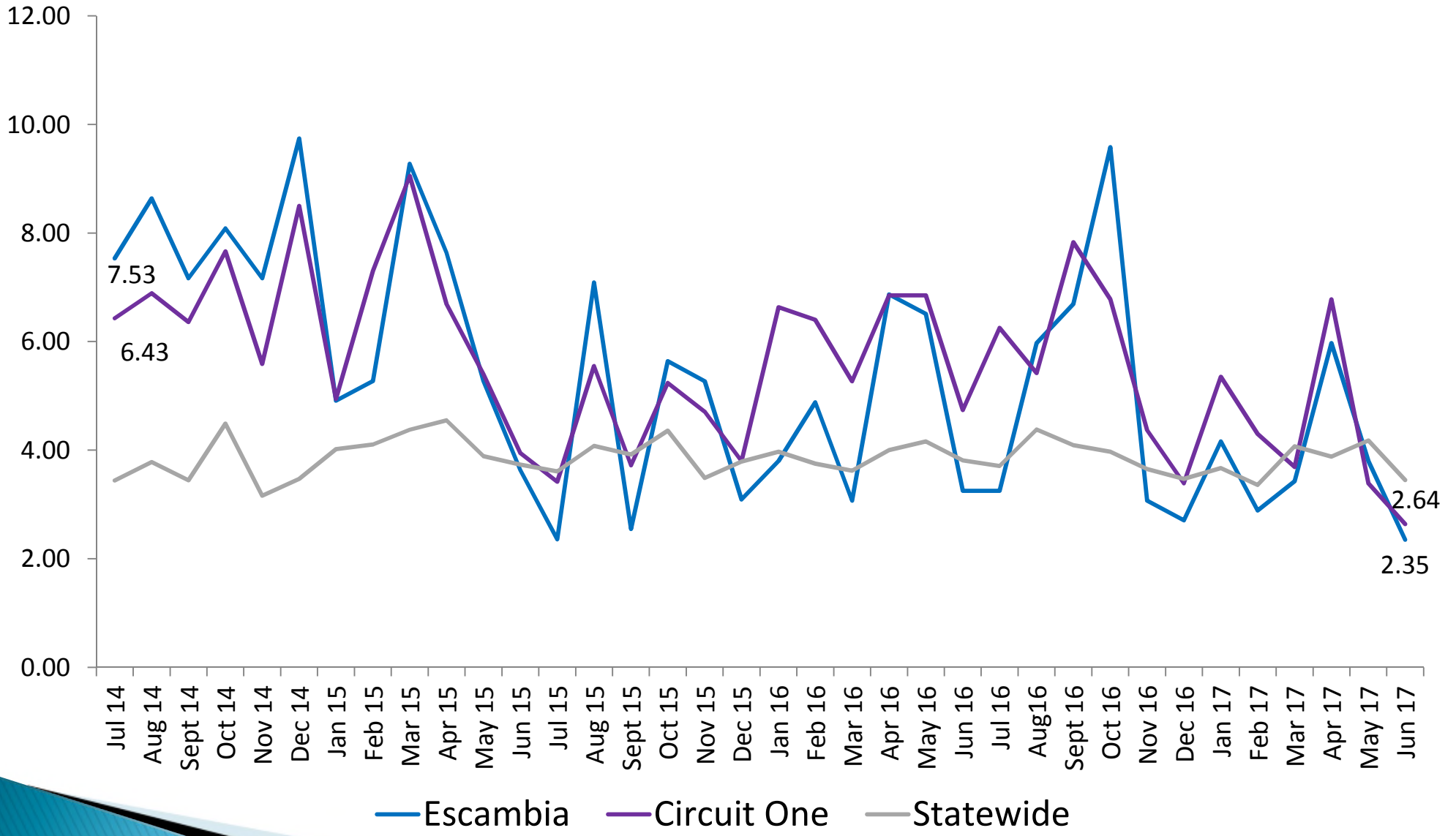
» Hotline Calls, Investigations, and Removals

# Comparison of Hotline Calls, Investigations Received, and Removals Escambia County



# Removal Rate Per 1,000 Children

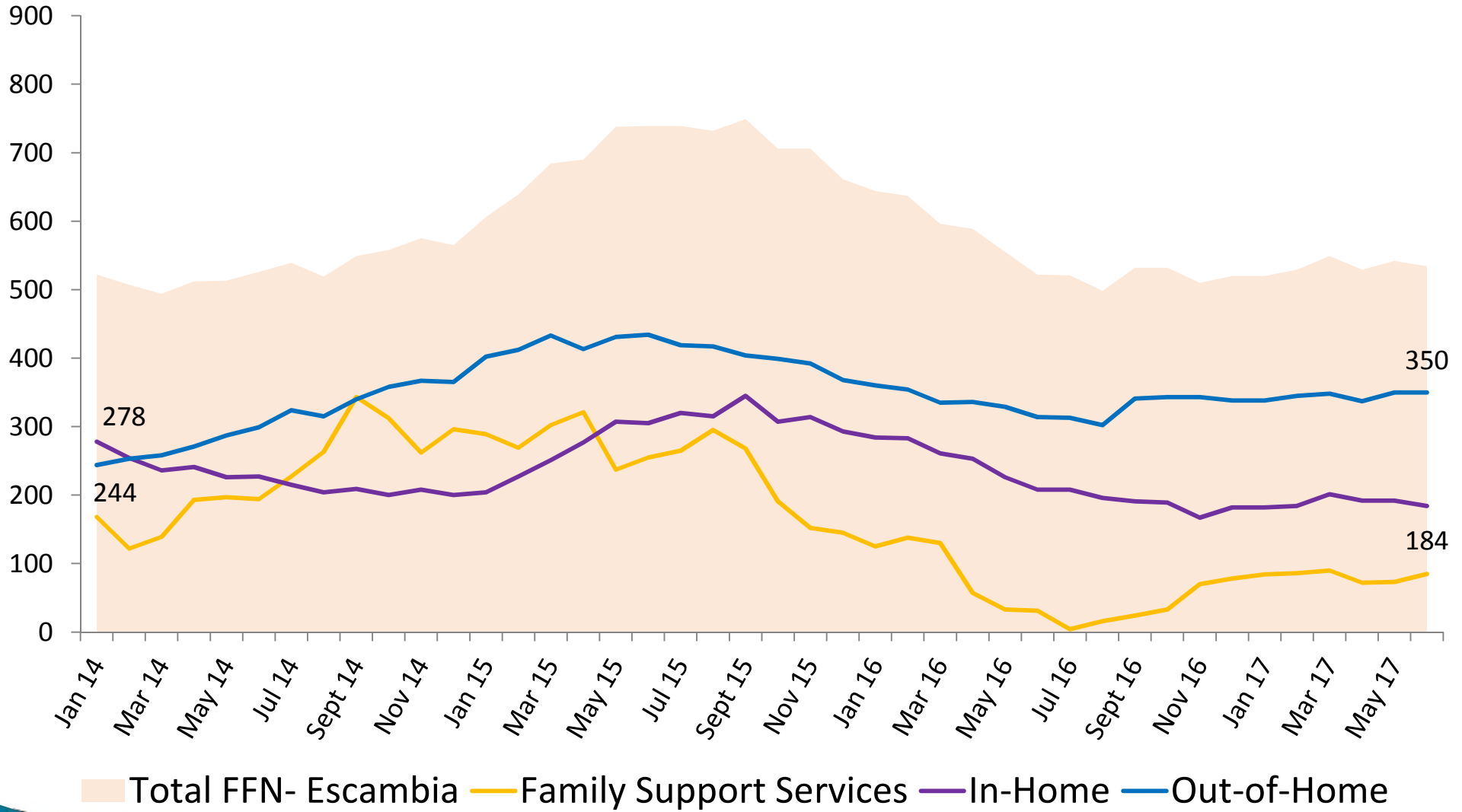
## Comparison of Escambia County, Circuit One, and State



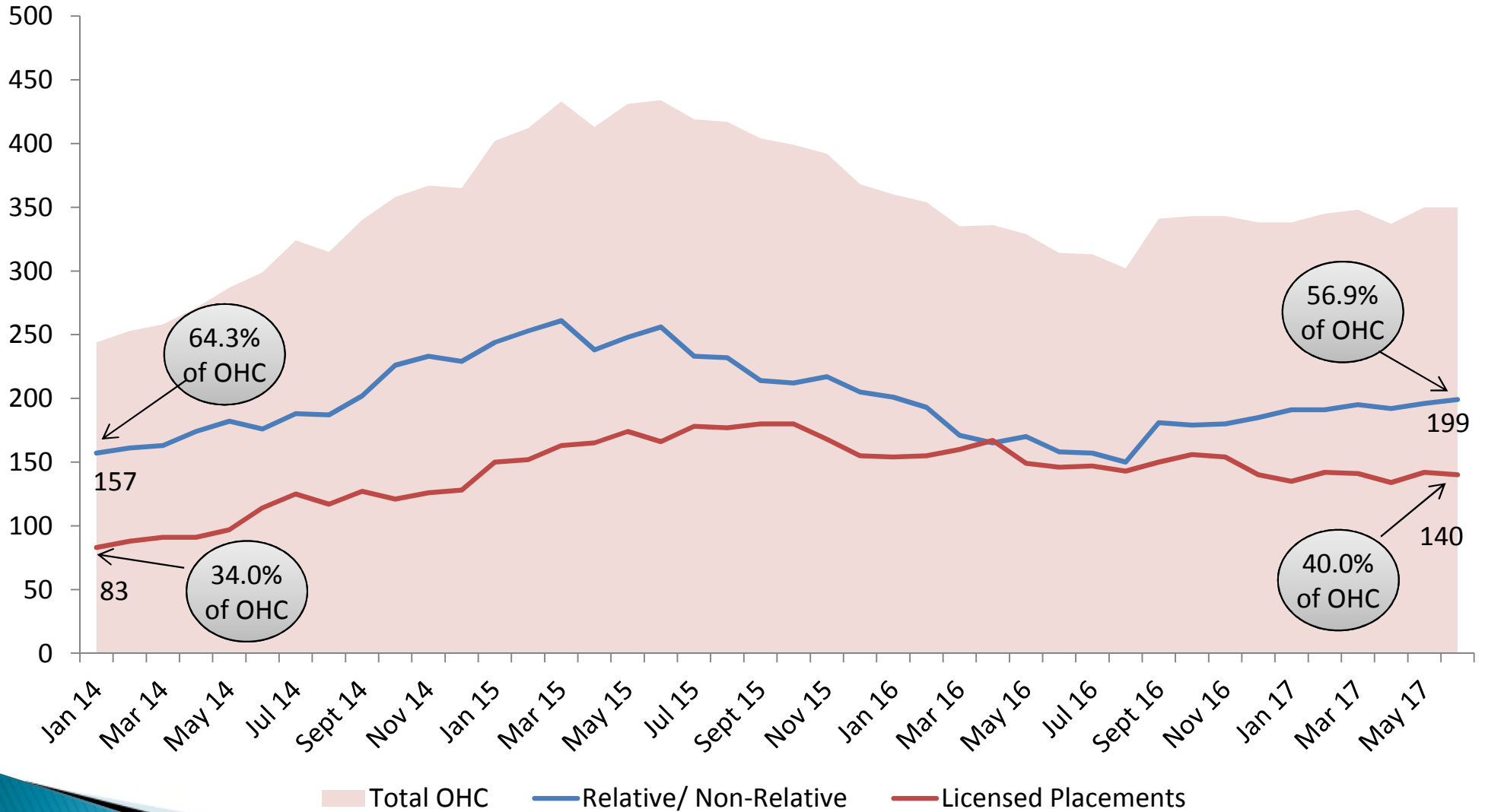
# Children Receiving Services



# Children Receiving Services by Service Type Escambia County



# Comparison of Children in Out-of-Home Care and Type of Placement Escambia County

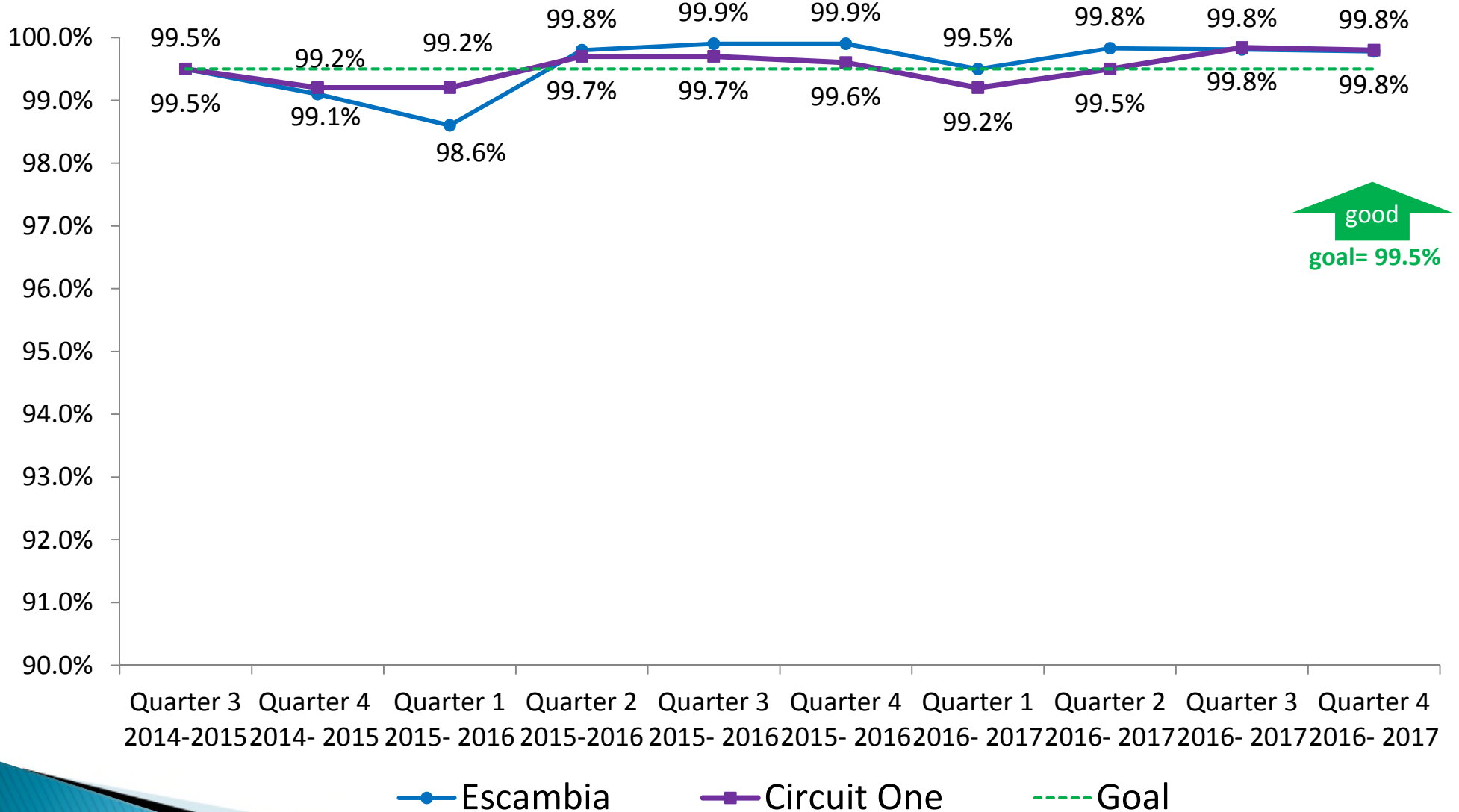




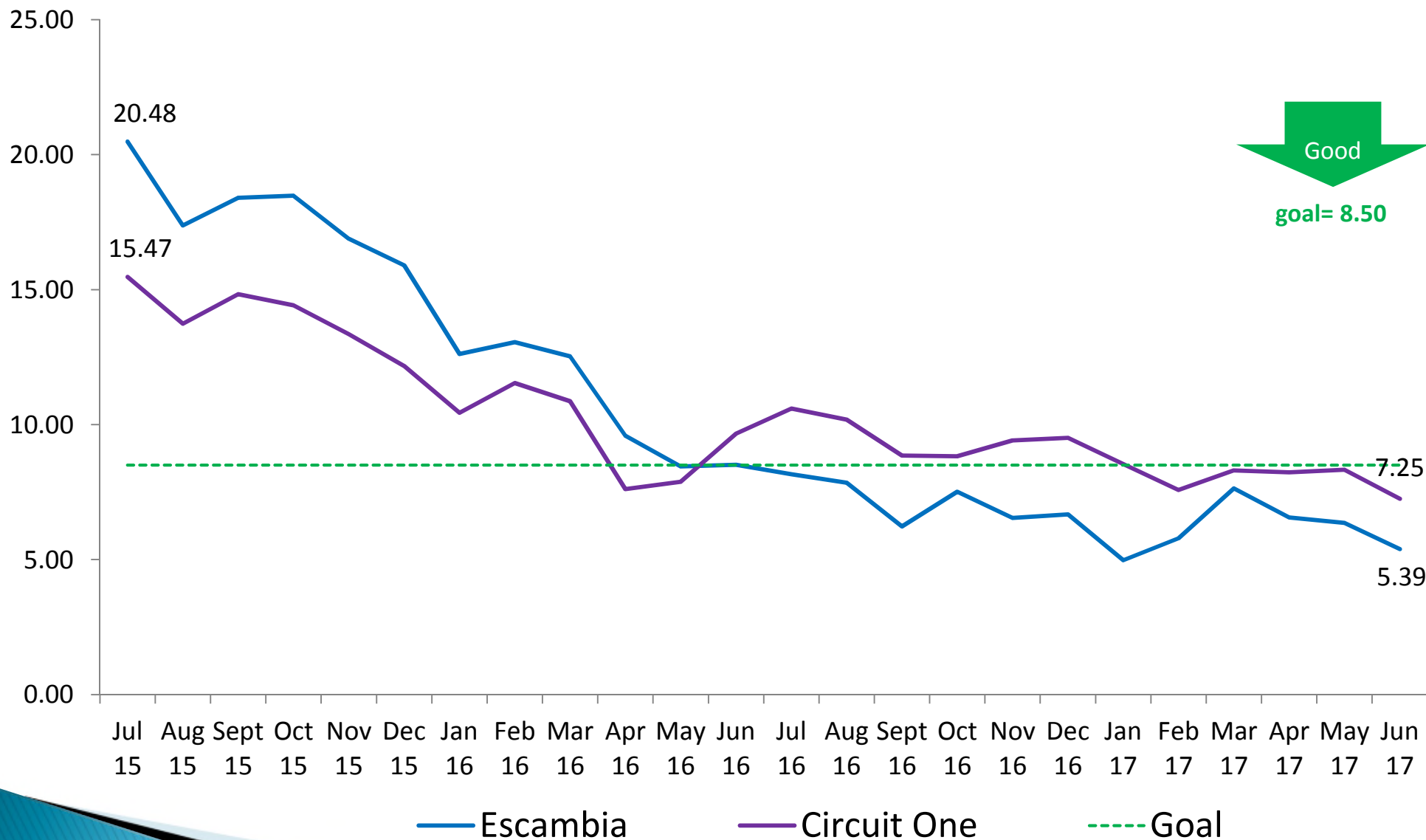
# Performance Measures

» Safety

# Percent of Children Under Supervision Seen Every 30 Days Escambia County



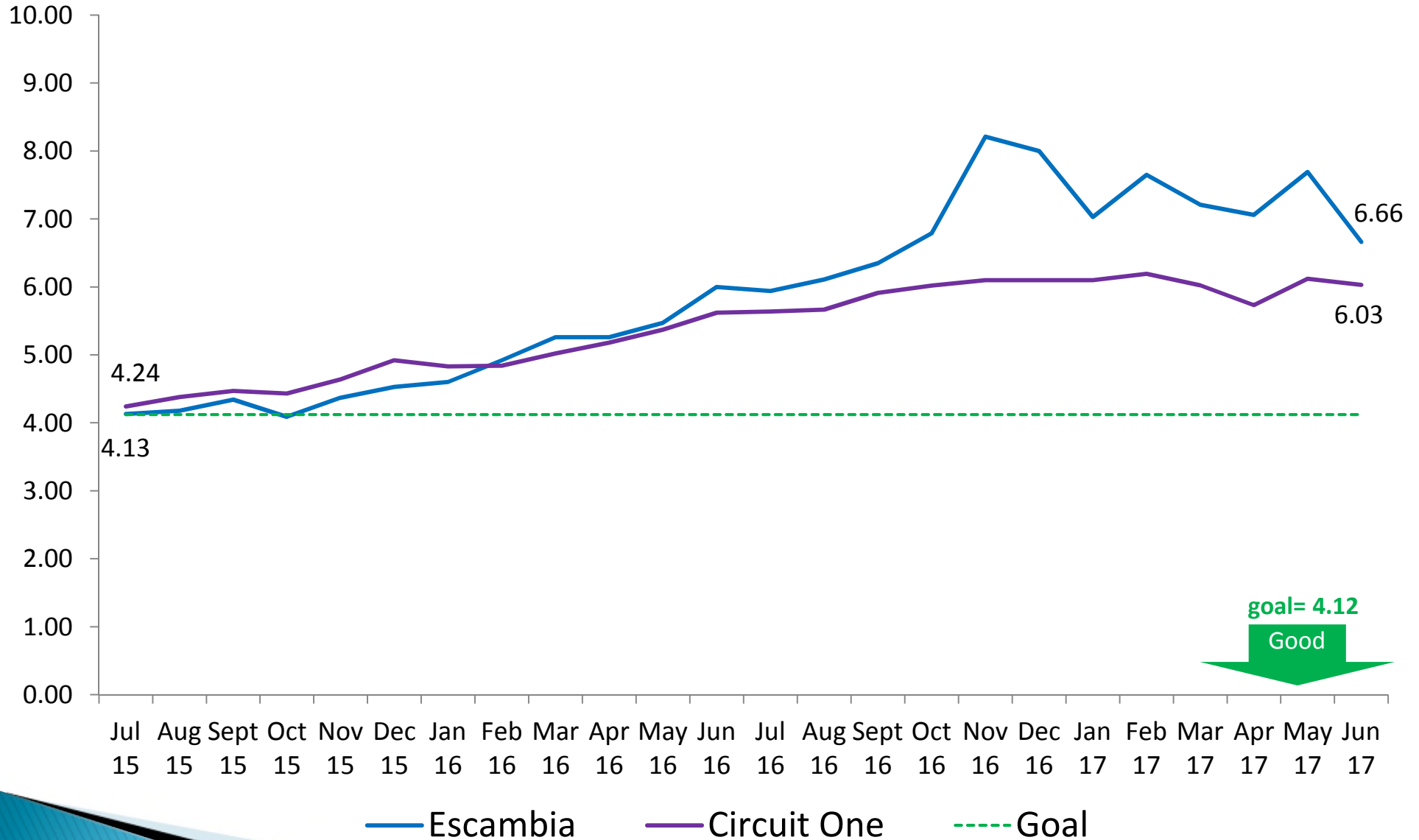
# Rate of Abuse or Neglect per Day While in Out-of-Home Care Escambia County



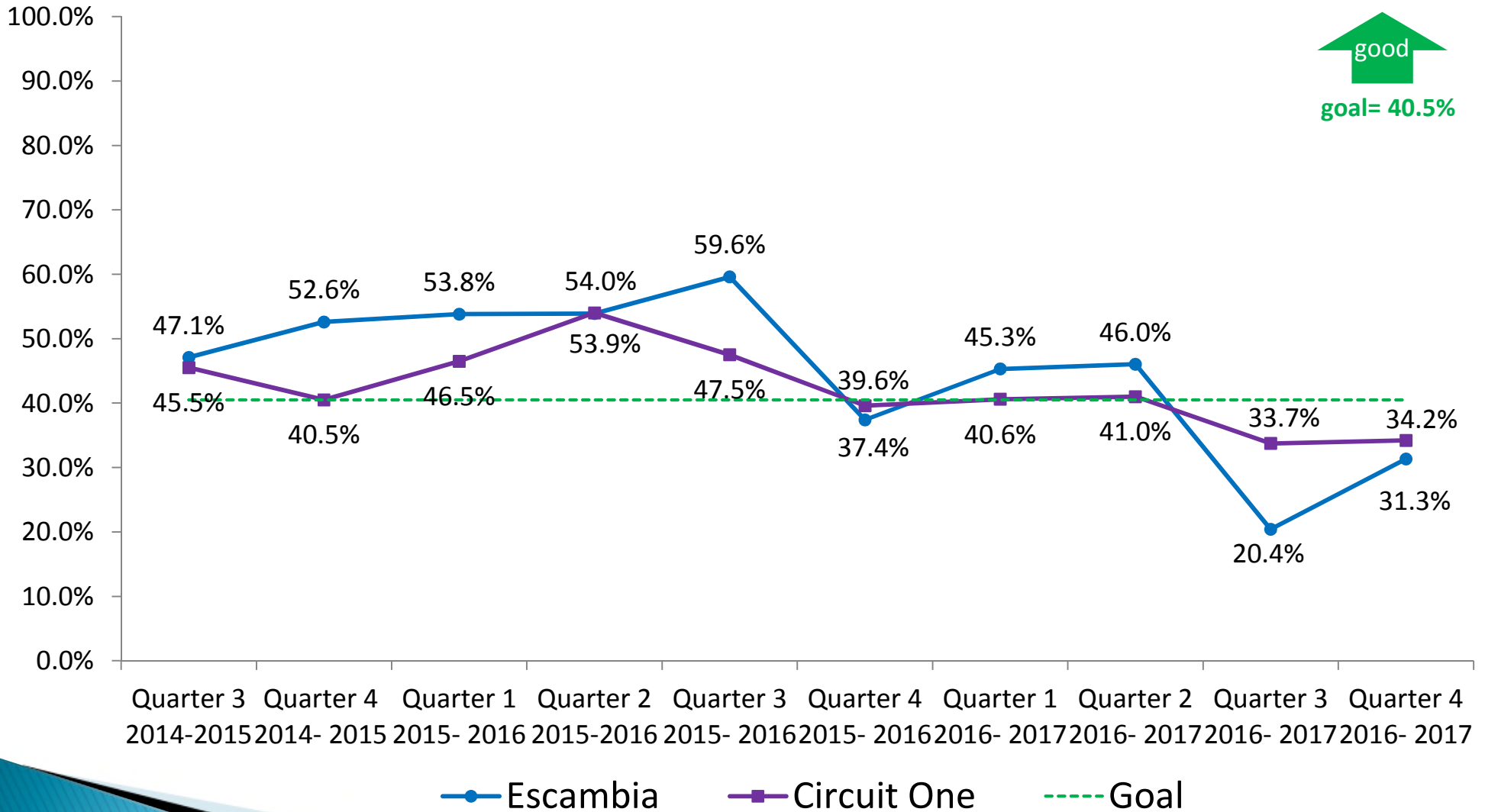
# Performance Measures

» Permanency

# Rate of Placement Moves Per 1,000 Days in Out-of-Home Care Escambia County

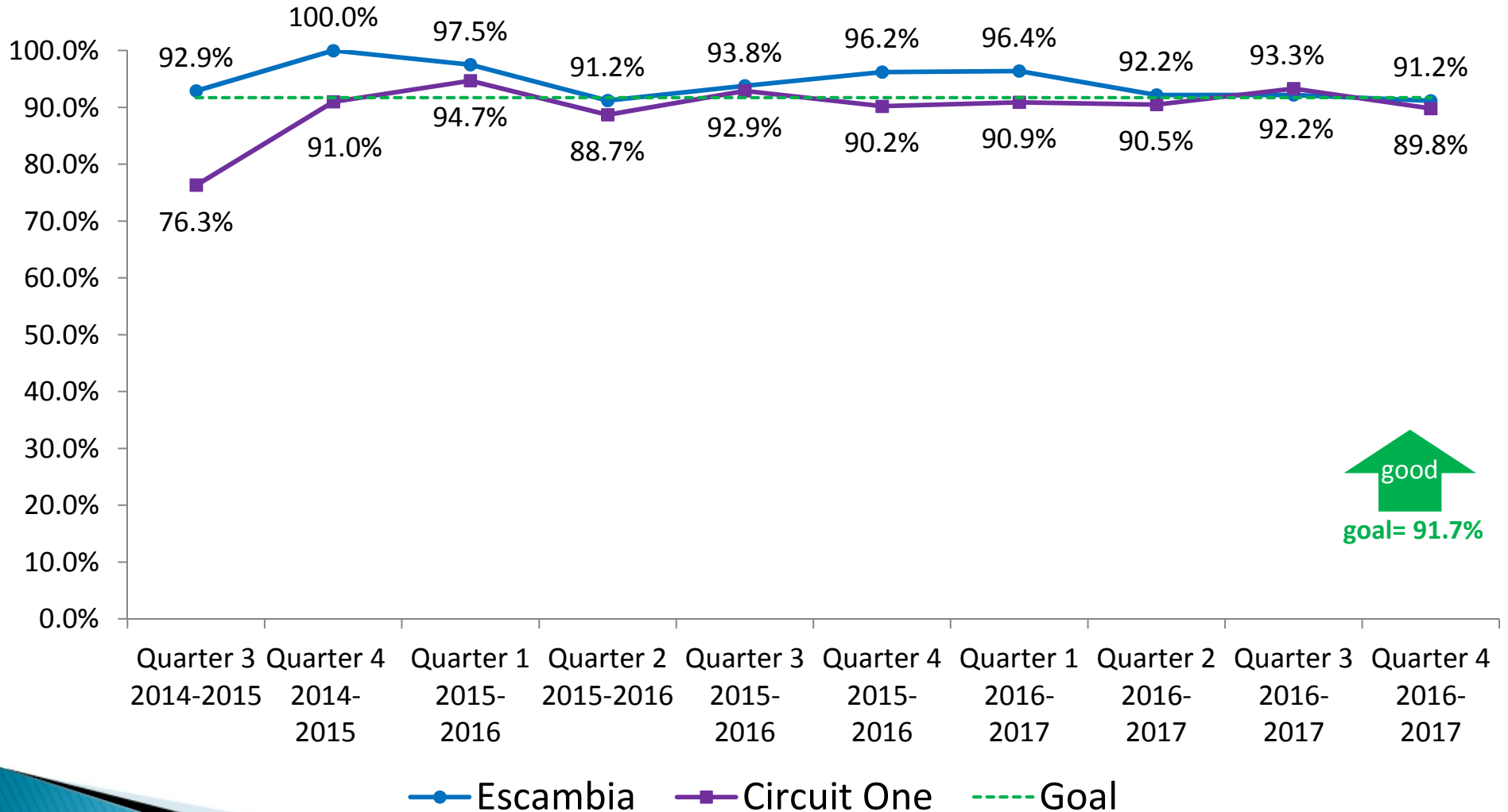


# Children Exiting Out-of-Home Care to a Permanent Home within 12 Months Escambia County

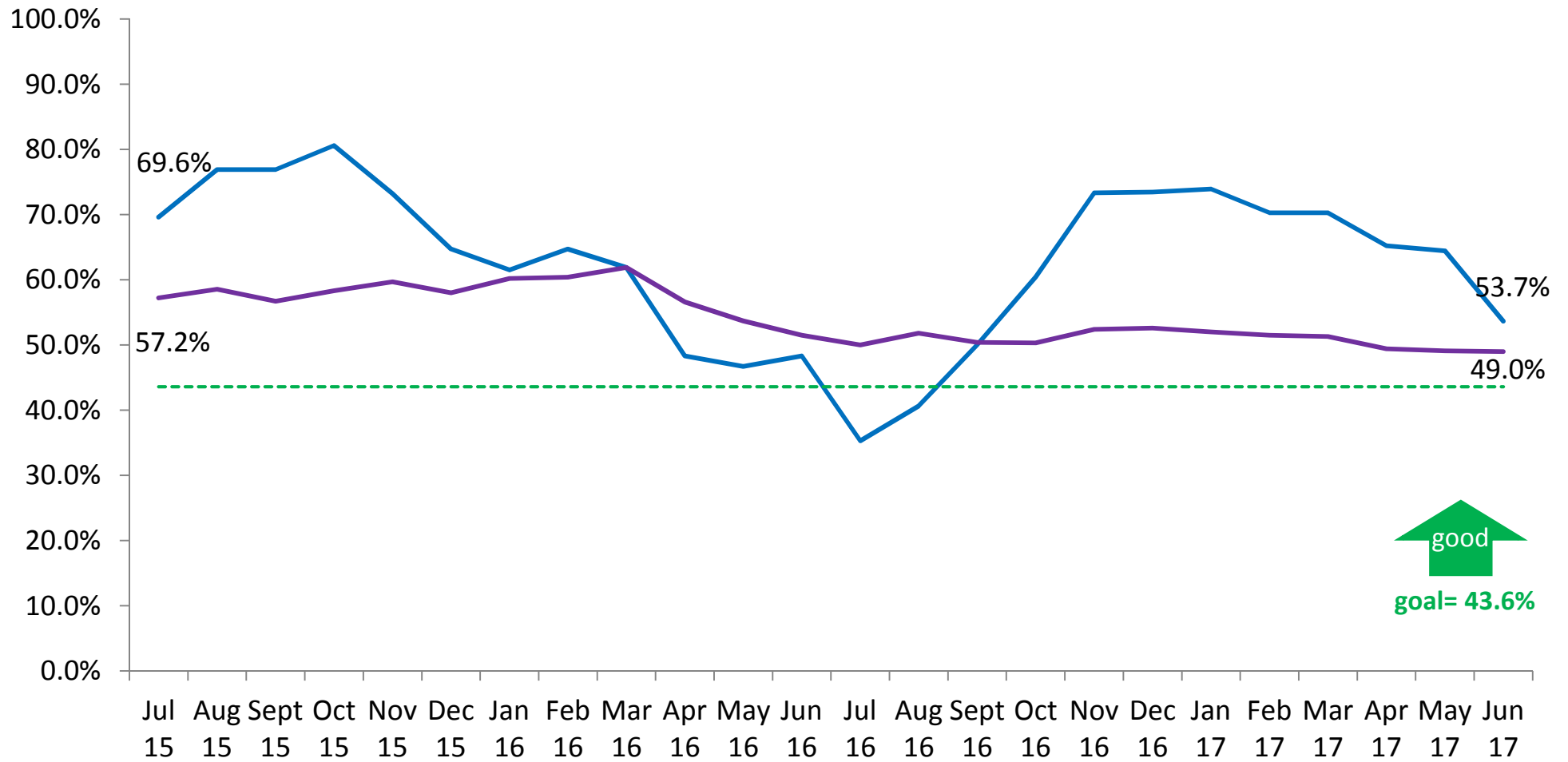


  
 good  
 goal= 40.5%

# Children Who Do Not Re-Enter Out-of-Home Care within 12 Months of Moving to a Permanent Home Escambia County



# Children Achieving Permanency in 12 Months for Children in Out-of-Home Care 12 to 23 Months Escambia County



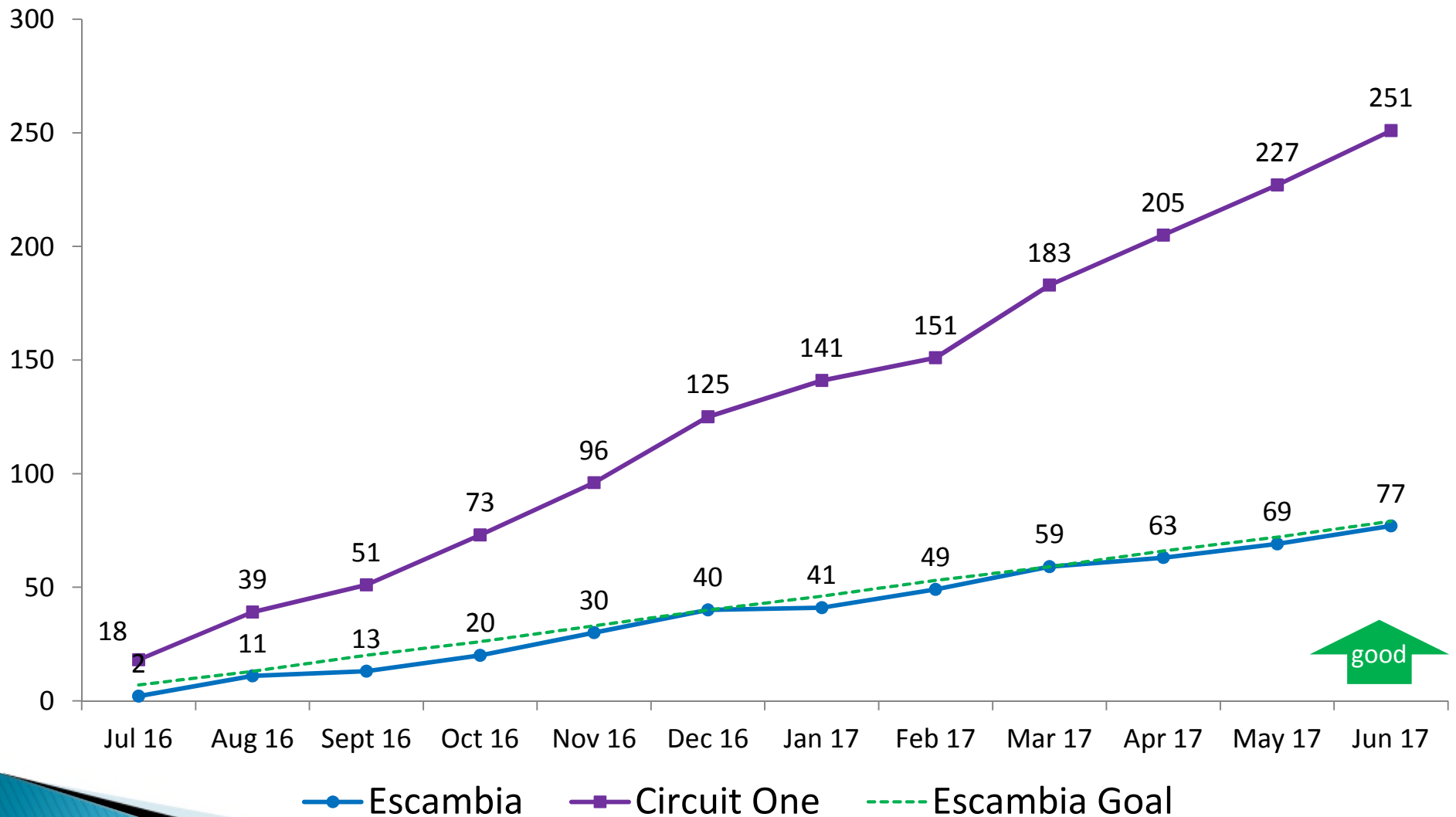
— Escambia   
 — Circuit One   
 - - - Goal



# Adoption Finalizations

## # of children with finalized adoptions (cumulative)

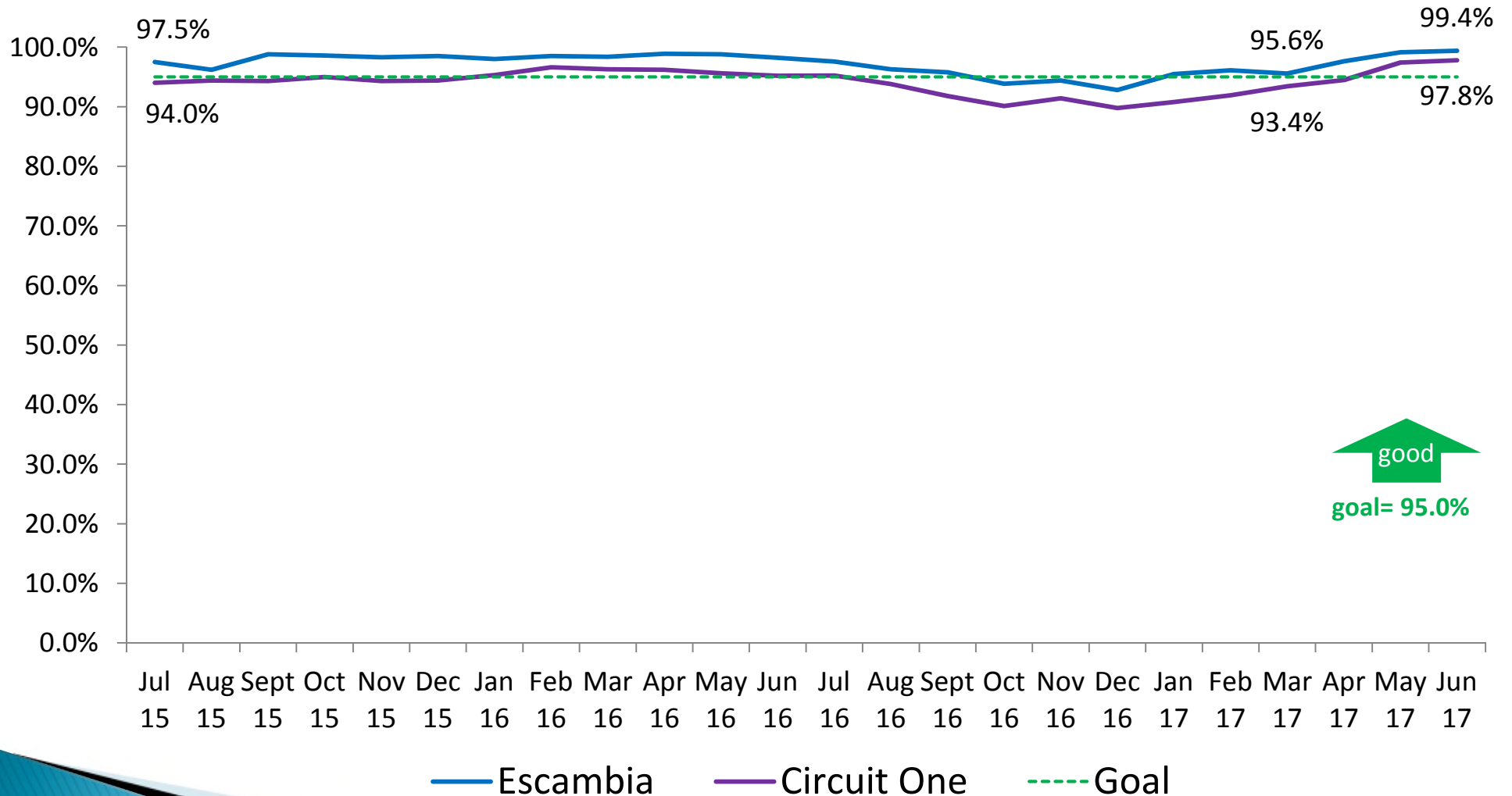
### Escambia County



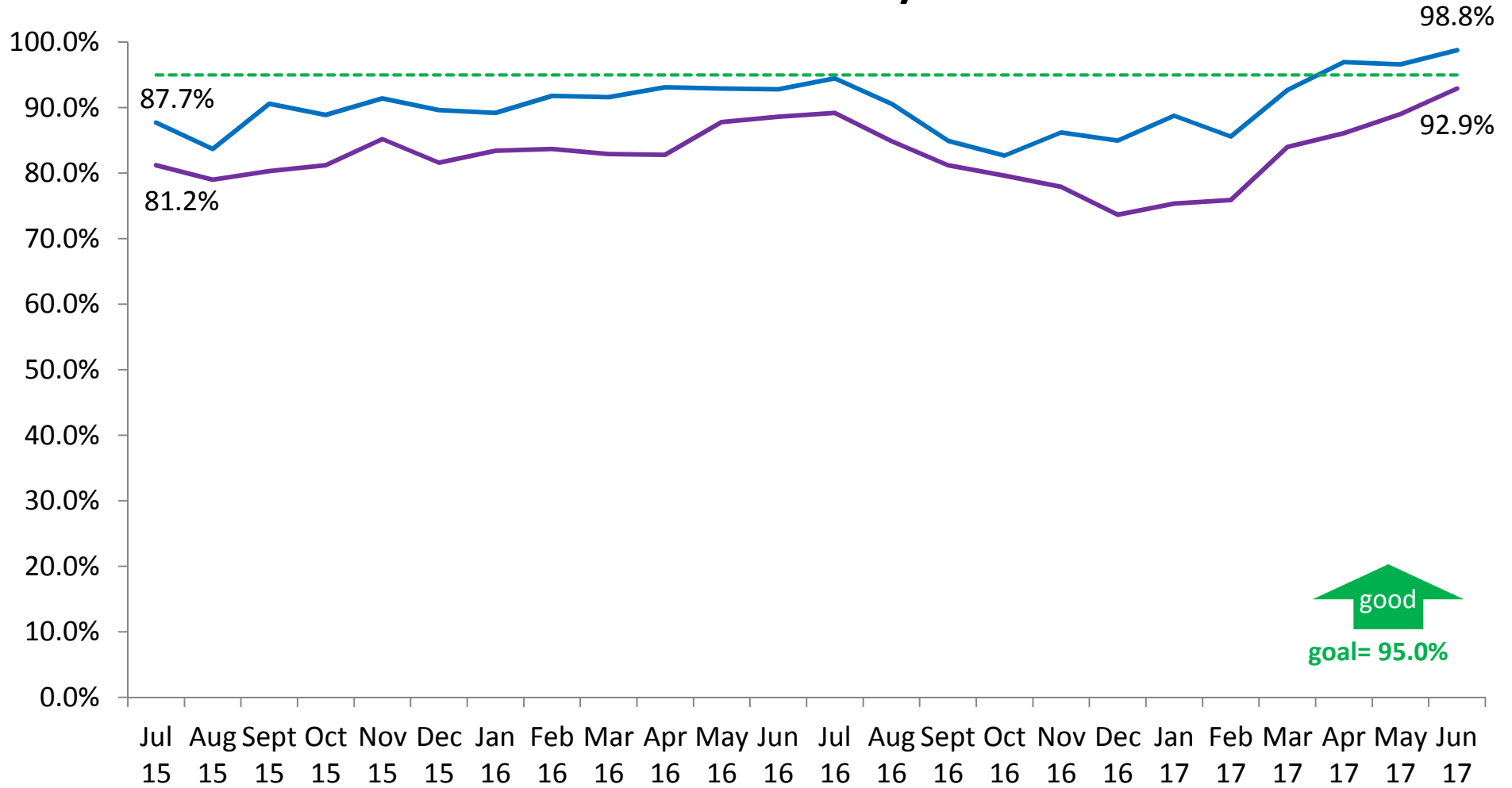
# Performance Measures

» Well-Being

# Children in Out-of-Home Care Who Received Medical Services within the Last 12 Months Escambia County

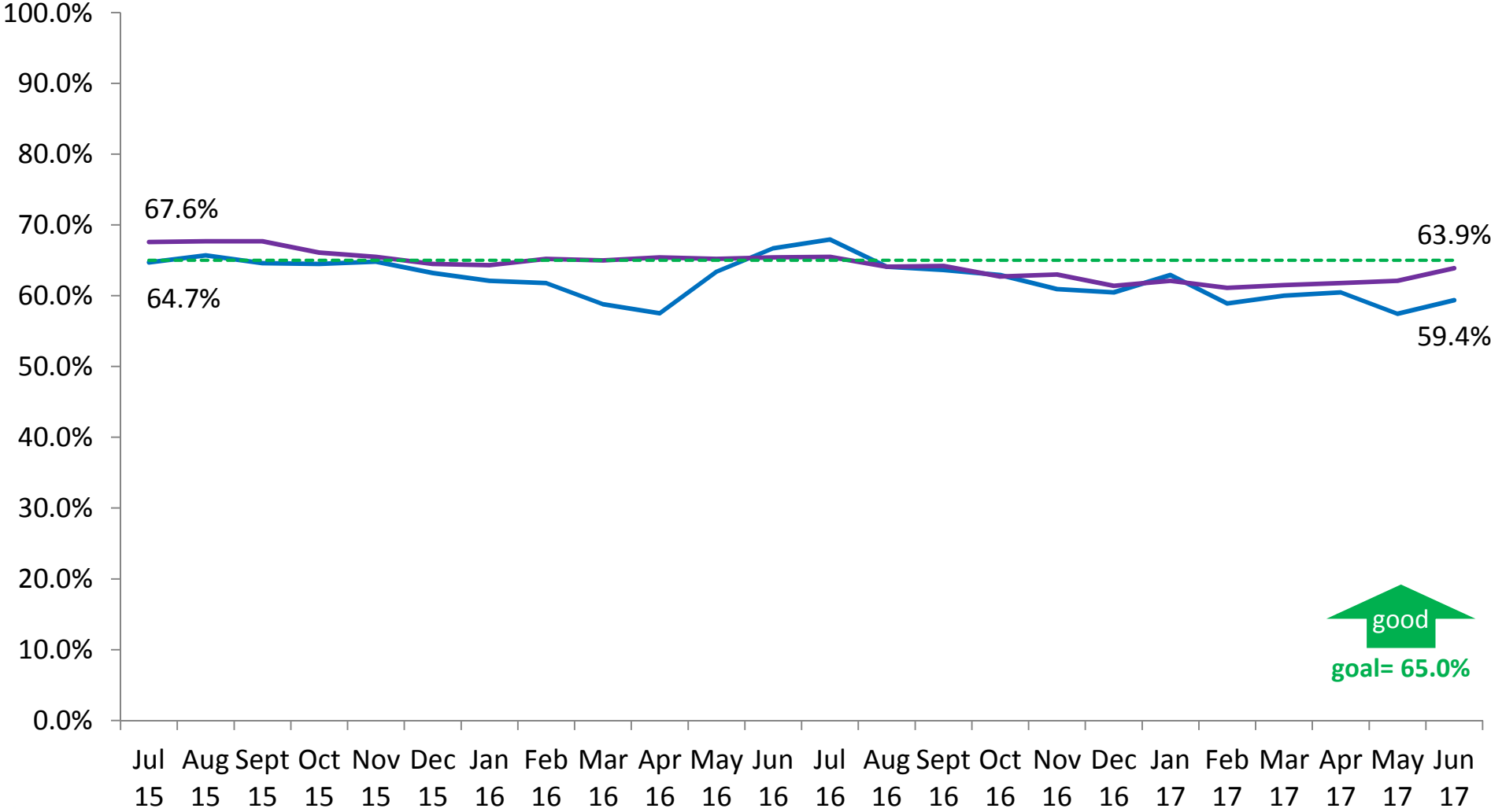


# Children in Out-of-Home Care Who Received Dental Services within the Last 7 Months Escambia County



— Escambia     
 — Circuit One     
 - - - Goal

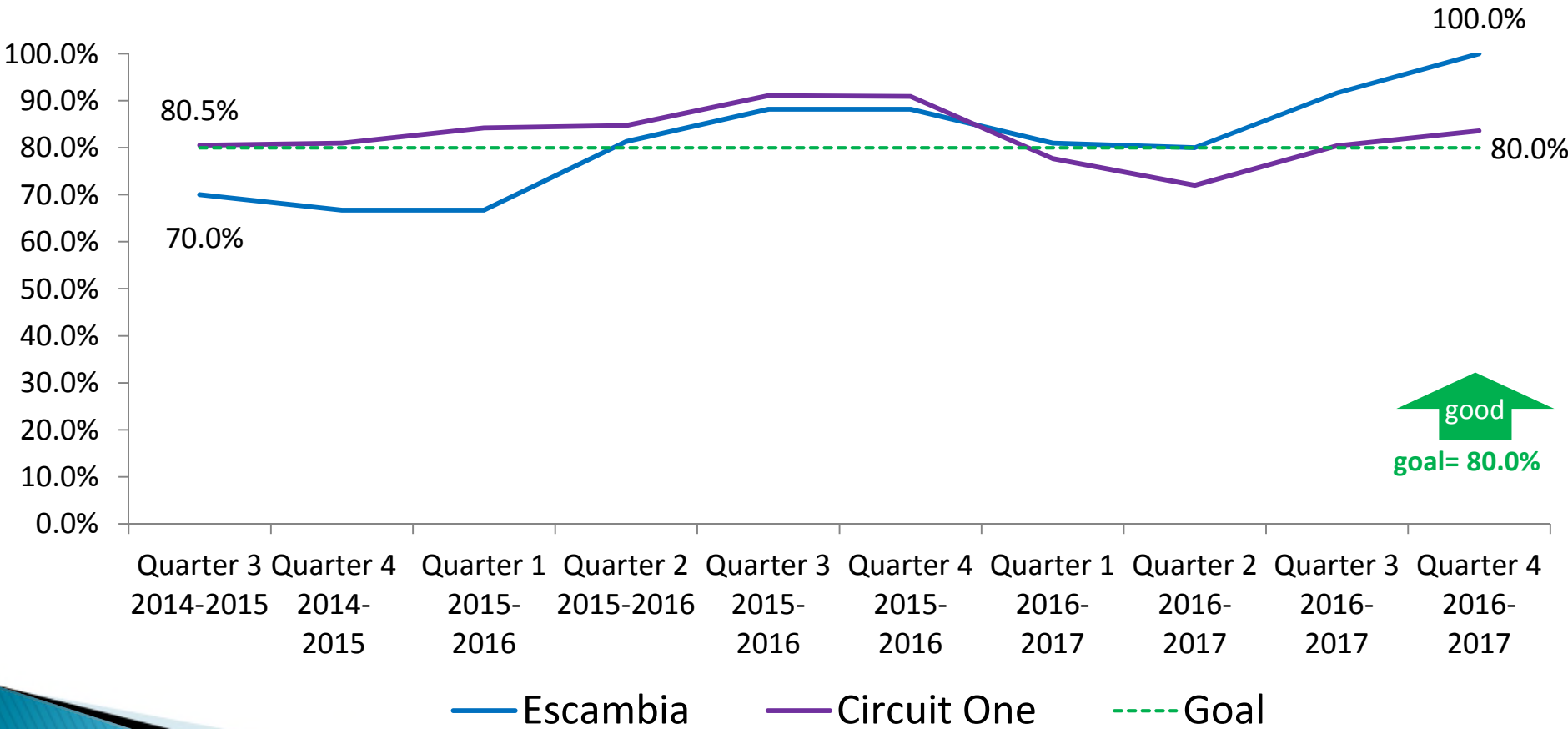
# Sibling Groups Where All Siblings Are Placed Together Escambia County



good  
goal= 65.0%

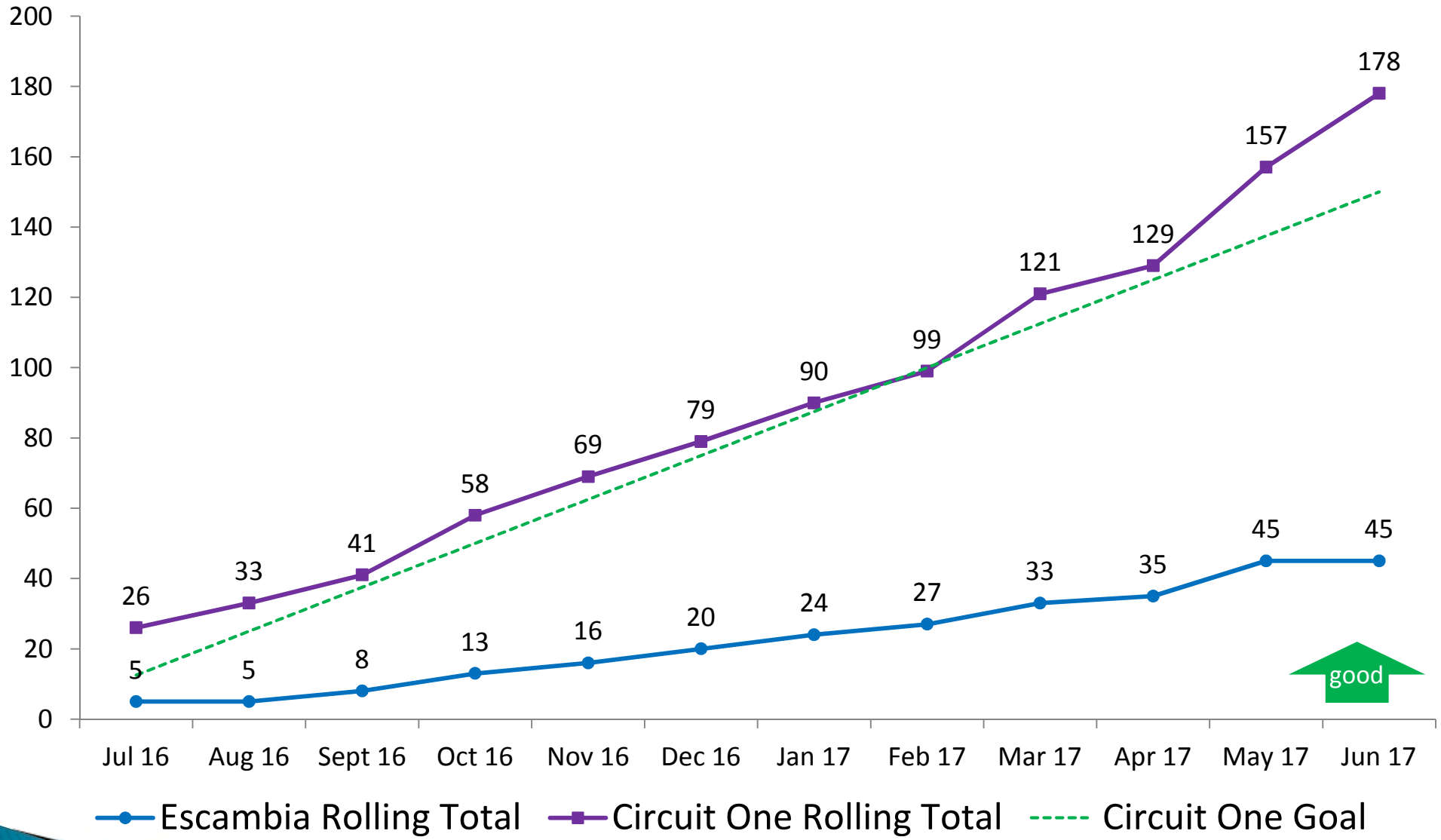
— Escambia — Circuit One - - - Goal

# Young Adults Who Aged Out of Foster Care Who Have Completed or Are Enrolled in Secondary Education, Vocational Training, or Adult Education Escambia County



  
 good  
 goal= 80.0%

# Initial Foster Home Beds Licensed Escambia County and Circuit One



# FFN and Contract Provider Foster Home Beds Escambia County

