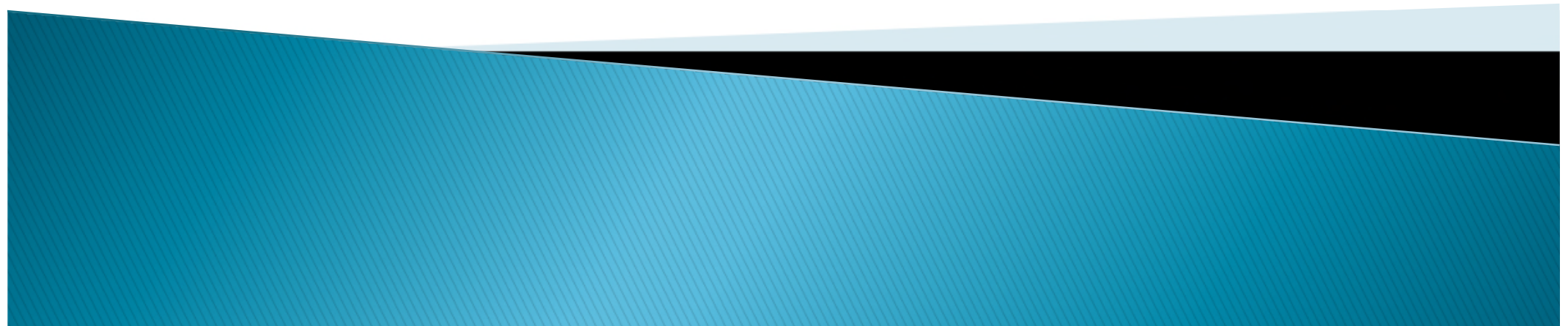


Santa Rosa County Community Alliance Data

FamiliesFirst Network
June 2017



Trends and Updates

April to June 2017

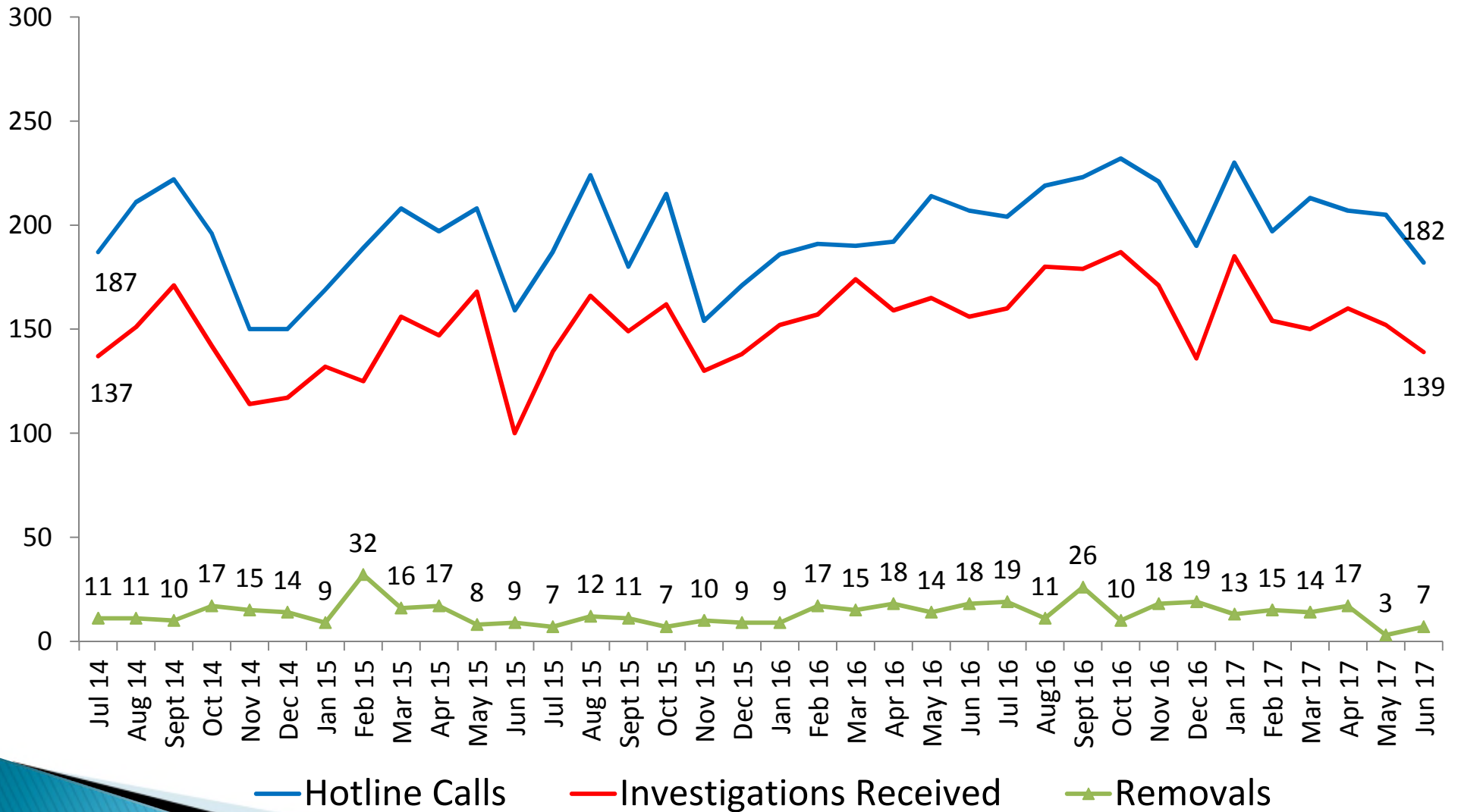
- ▶ The removal rate remained high in April, however, it fell below the state and circuit rates the last two months of the quarter.
- ▶ There was small decrease in children receiving services from the previous quarter.
- ▶ Foster home placements decreased 20.2% from the previous quarter while relative/ non-relative placements remained fairly steady. 50.0% of the children in out-of-home care are placed in relative/ non-relative placements.
- ▶ The performance measure targets have been met or exceeded for the following measures:
 - Children under supervision seen every 30 days
 - Rate of abuse or neglect per day while in out-of-home care
 - Children exiting out-of-home care to a permanent home
 - Children achieving permanency in 12 months for children in out-of-home care 12 to 23 months
 - Children in out-of-home care who received medical services within the last 12 months
 - Sibling groups where all siblings are placed together
 - Young adults who aged out of foster care who have completed or are enrolled in secondary education, vocational training, or adult education.
- ▶ Santa Rosa county has had a net loss of 14 traditional foster home beds since June 30, 2016.
- ▶ Santa Rosa county has 84 traditional foster homes with a total capacity of 172 beds as of June 30, 2017.

Investigations Summary

» Hotline Calls, Investigations, and Removals

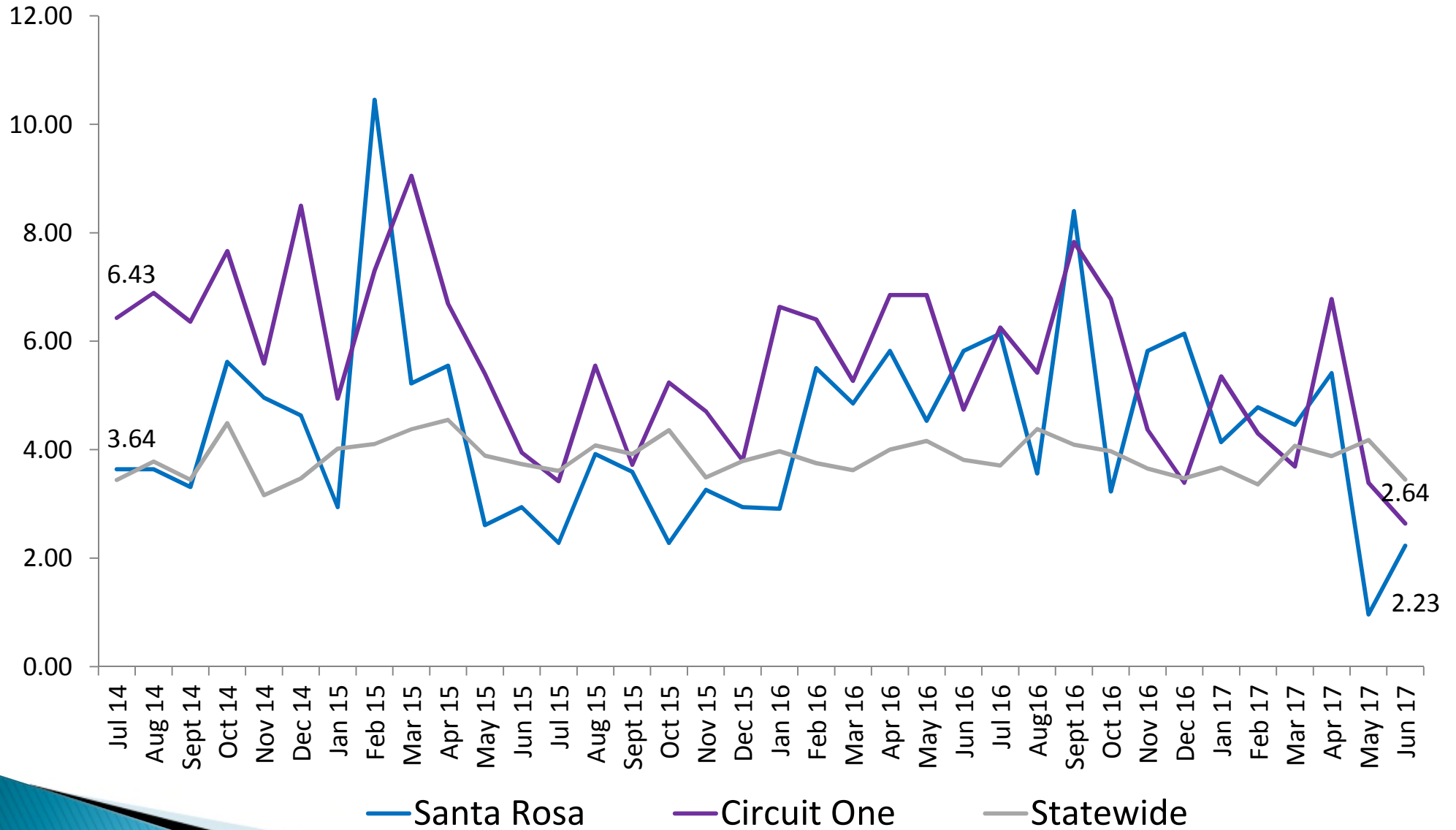
Comparison of Hotline Calls, Investigations Received, and Removals

Santa Rosa County



Removal Rate Per 1,000 Children

Comparison of Santa Rosa County, Circuit One, and State

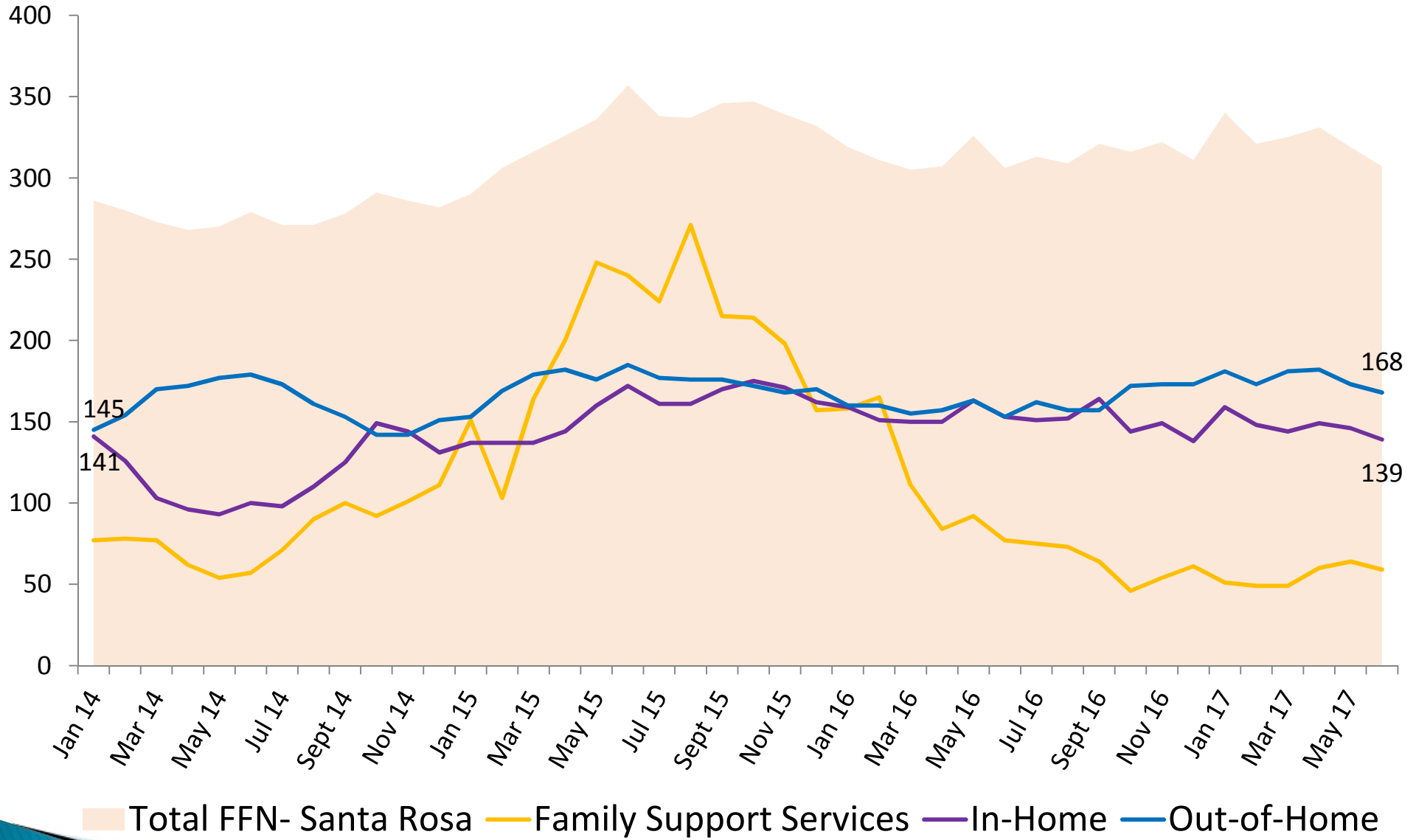


Children Receiving Services

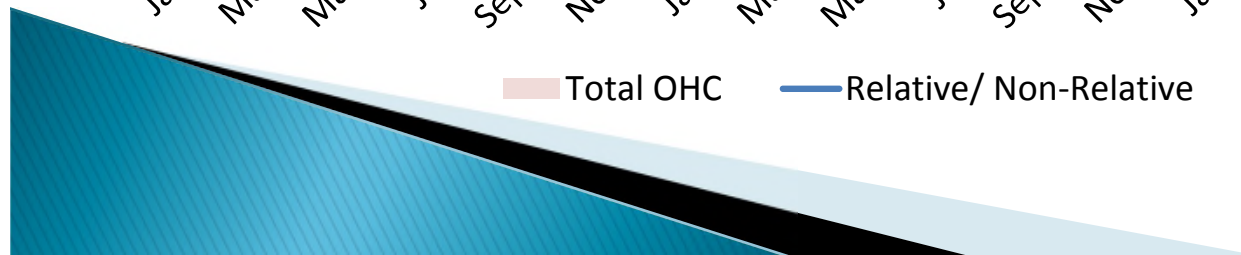
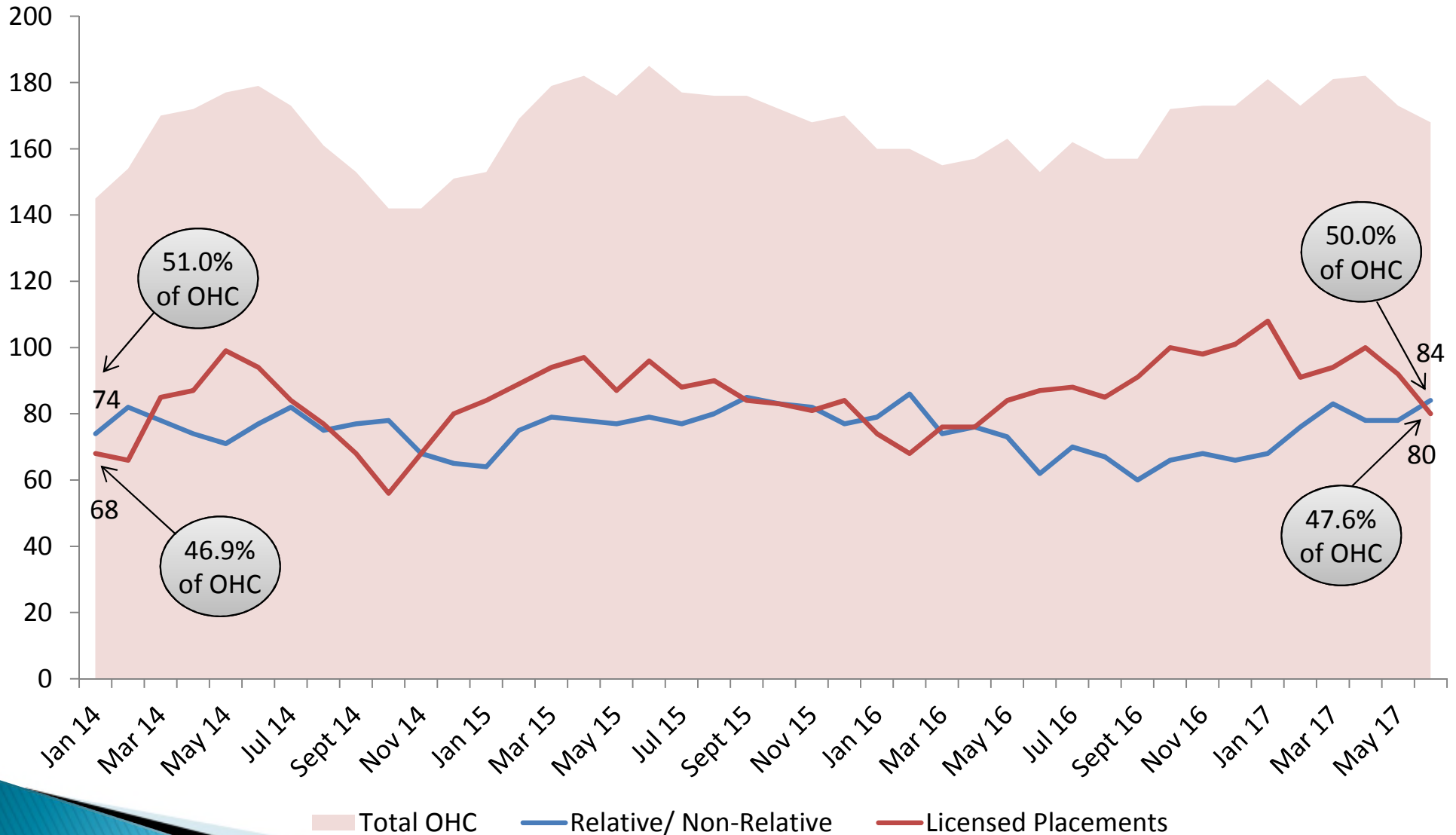


Children Receiving Services by Service Type

Santa Rosa County



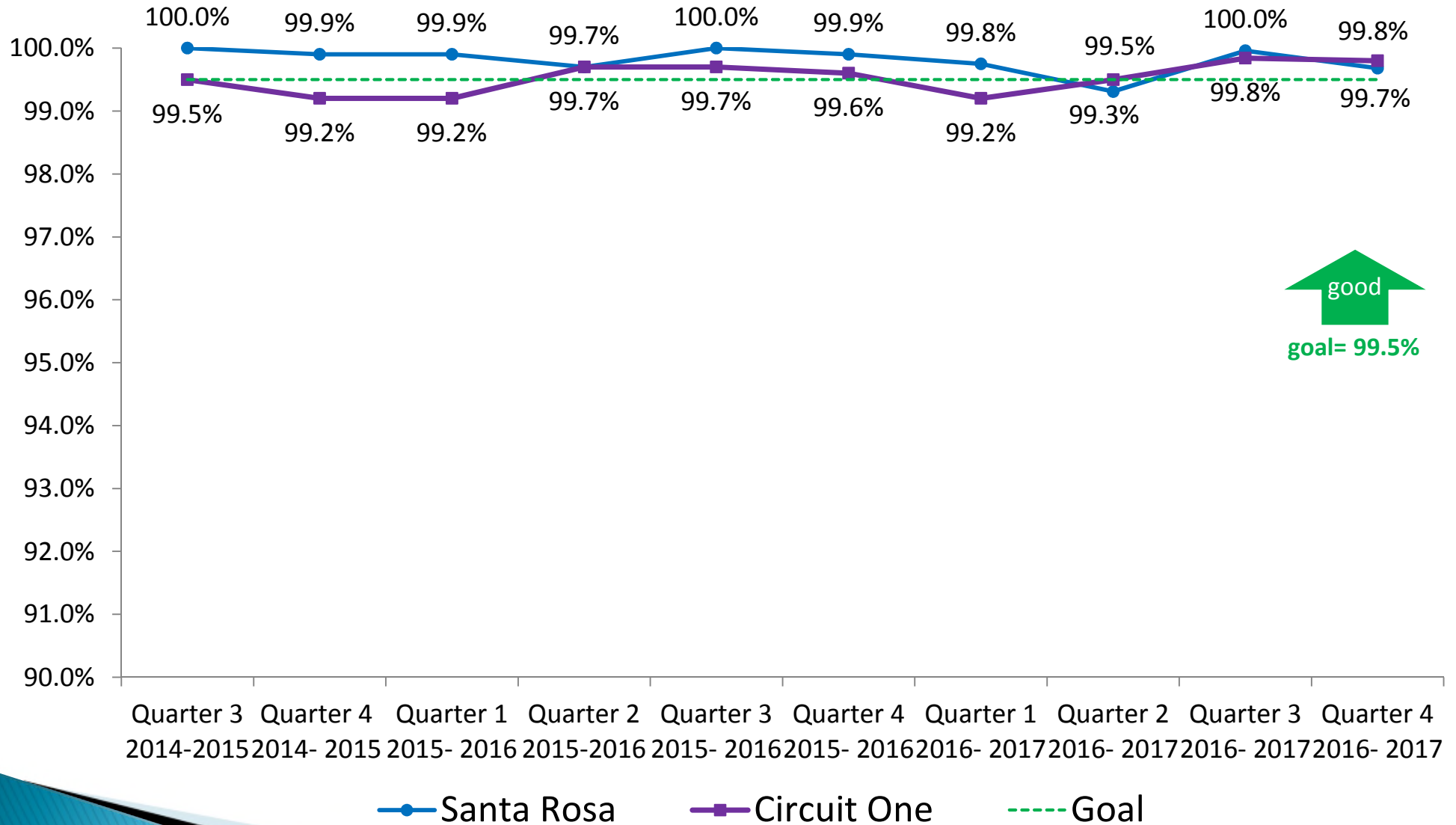
Comparison of Children in Out-of-Home Care and Type of Placement Santa Rosa County



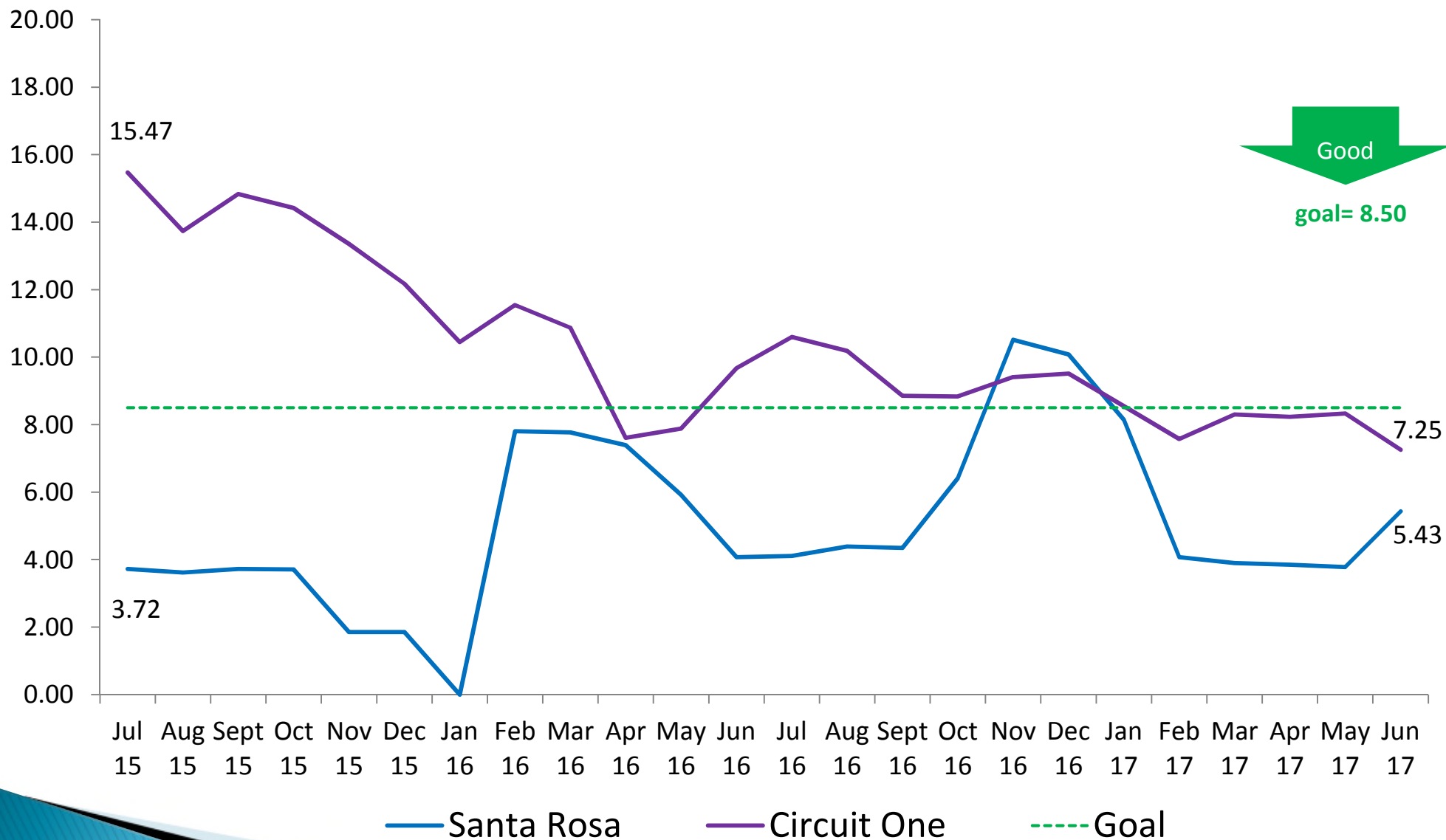
Performance Measures

» Safety

Percent of Children Under Supervision Seen Every 30 Days Santa Rosa County



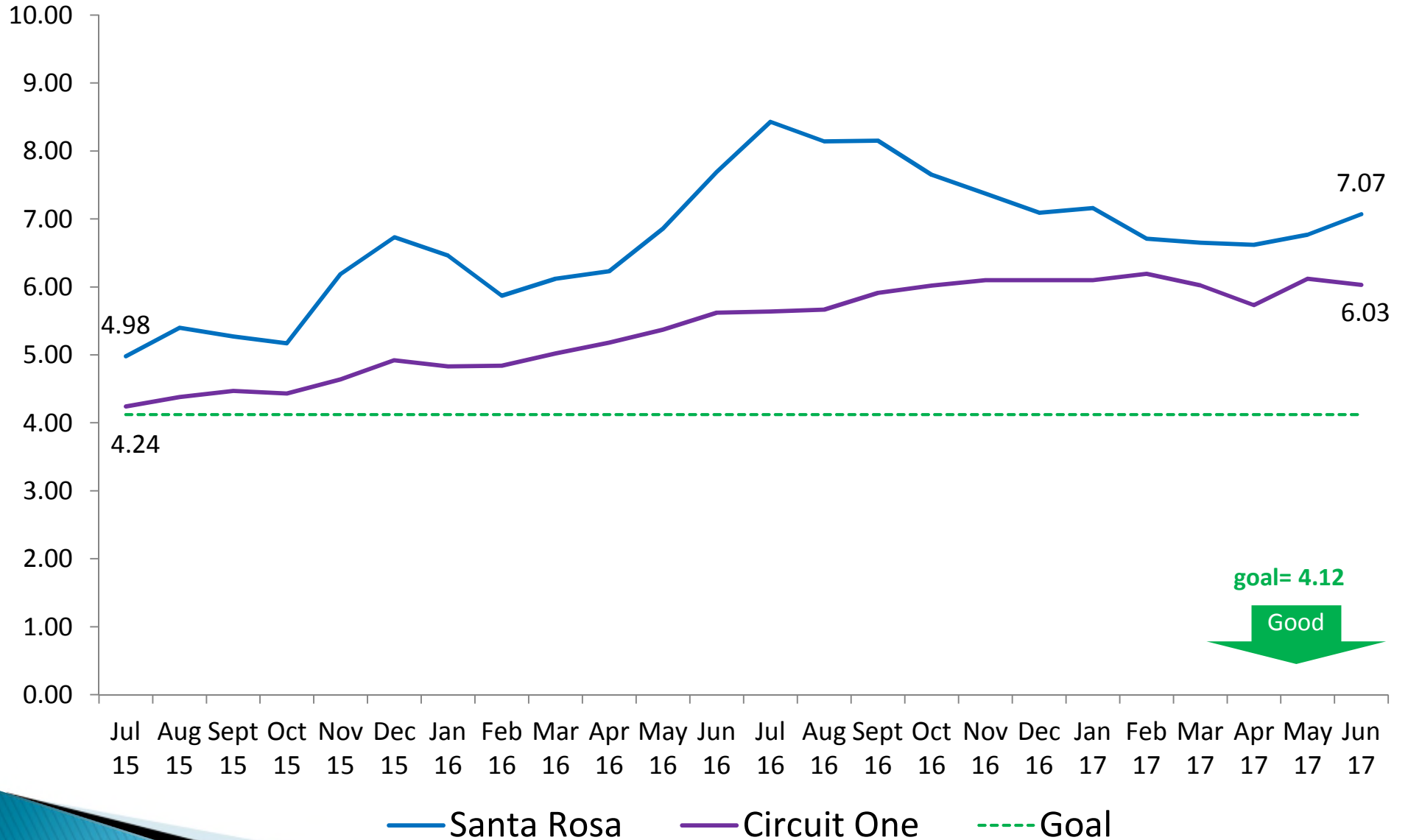
Rate of Abuse or Neglect per Day While in Out-of-Home Care Santa Rosa County



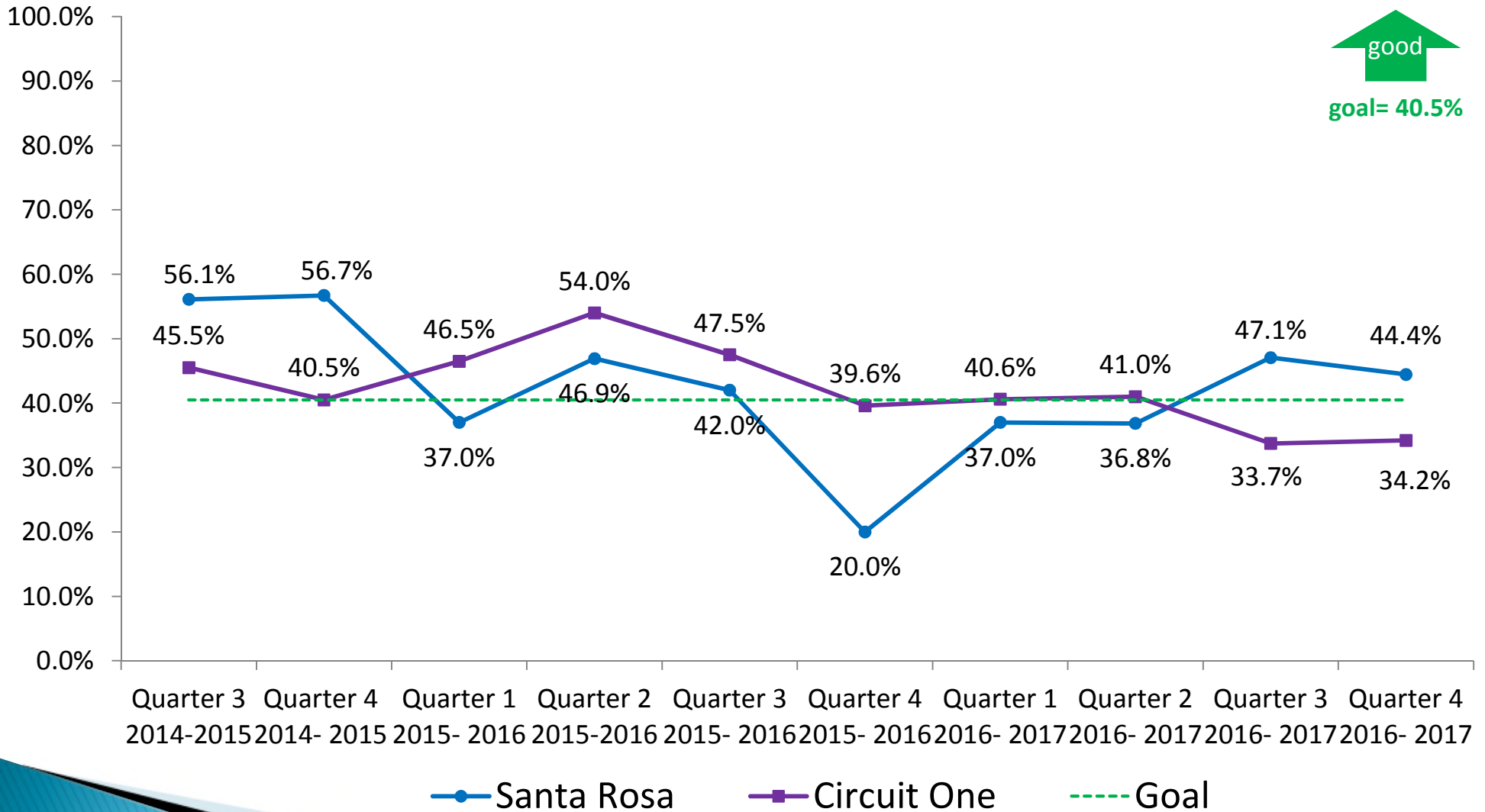
Performance Measures

» Permanency

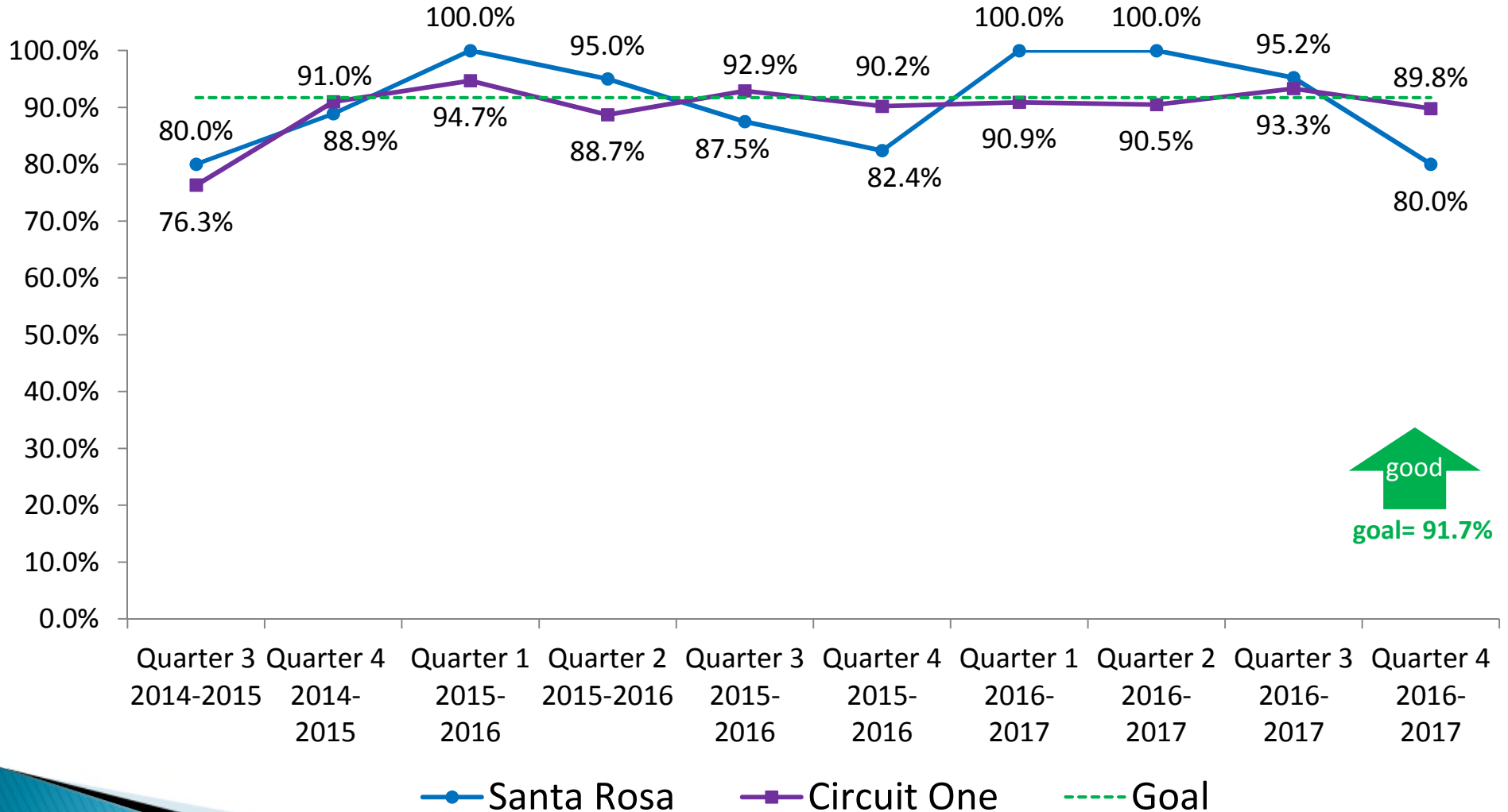
Rate of Placement Moves Per 1,000 Days in Out-of-Home Care Santa Rosa County



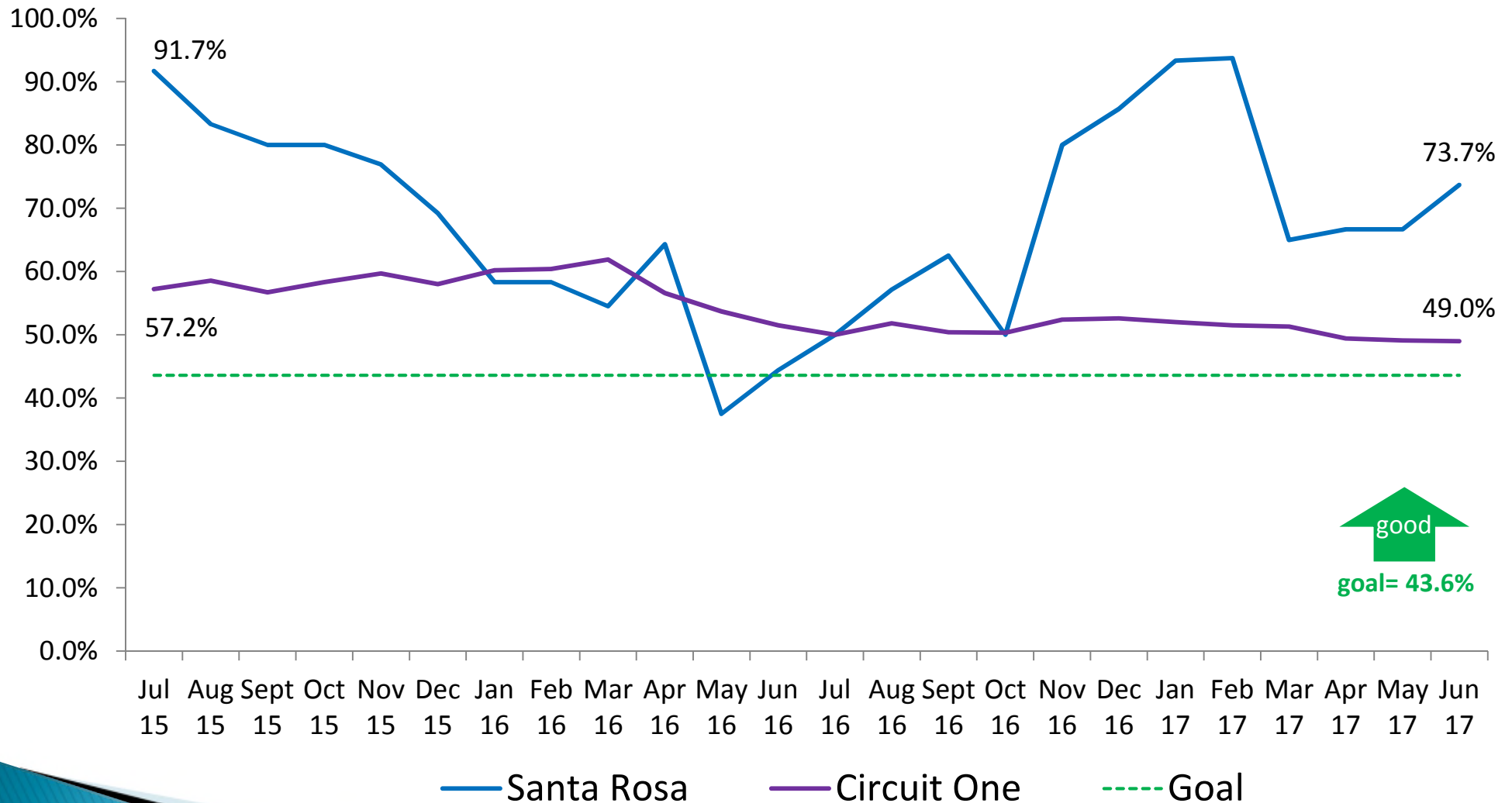
Children Exiting Out-of-Home Care to a Permanent Home within 12 Months Santa Rosa County



Children Who Do Not Re-Enter Out-of-Home Care within 12 Months of Moving to a Permanent Home Santa Rosa County



Children Achieving Permanency in 12 Months for Children in Out-of-Home Care 12 to 23 Months Santa Rosa County

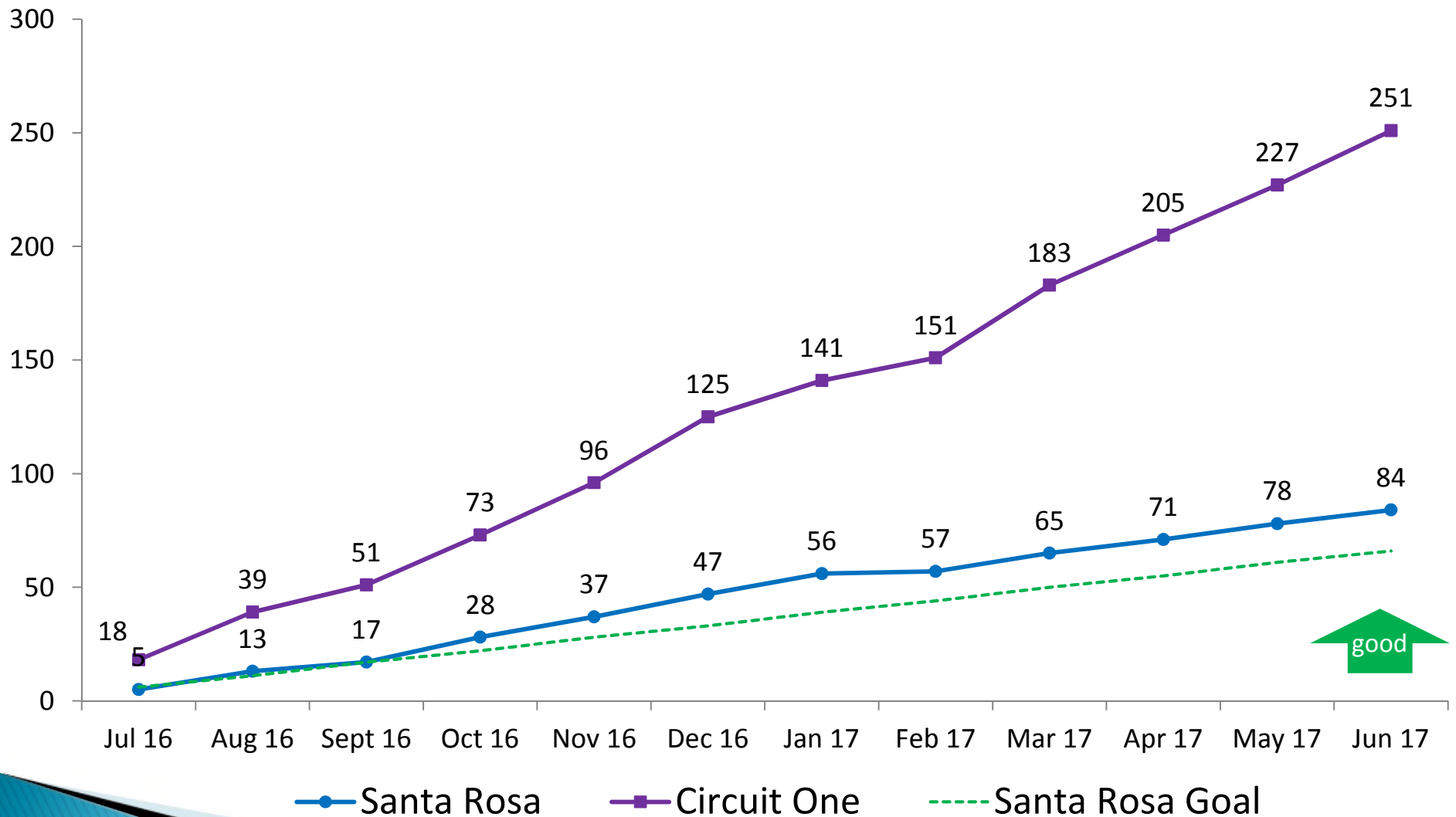


 good
 goal= 43.6%

Adoption Finalizations

of children with finalized adoptions (cumulative)

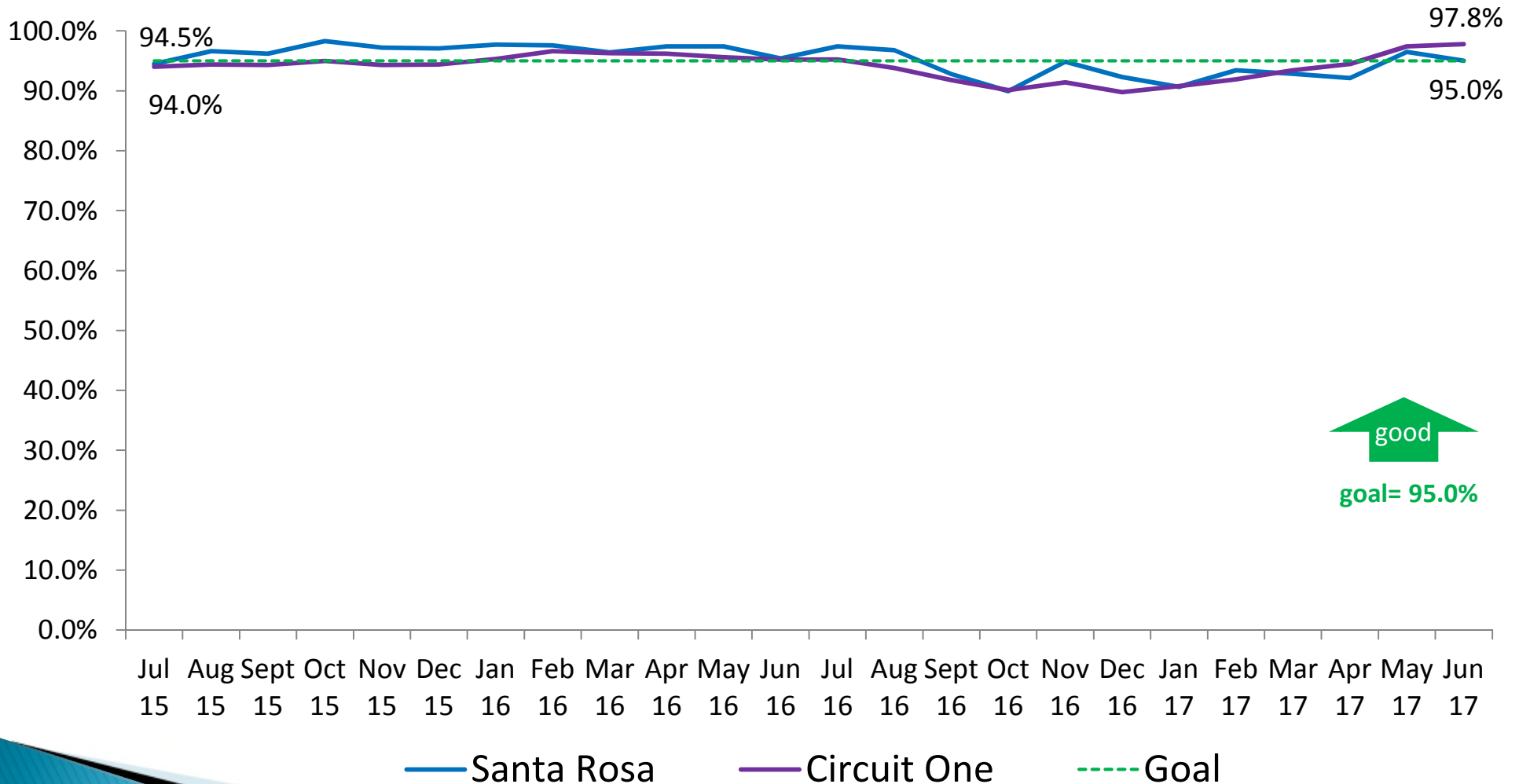
Santa Rosa County



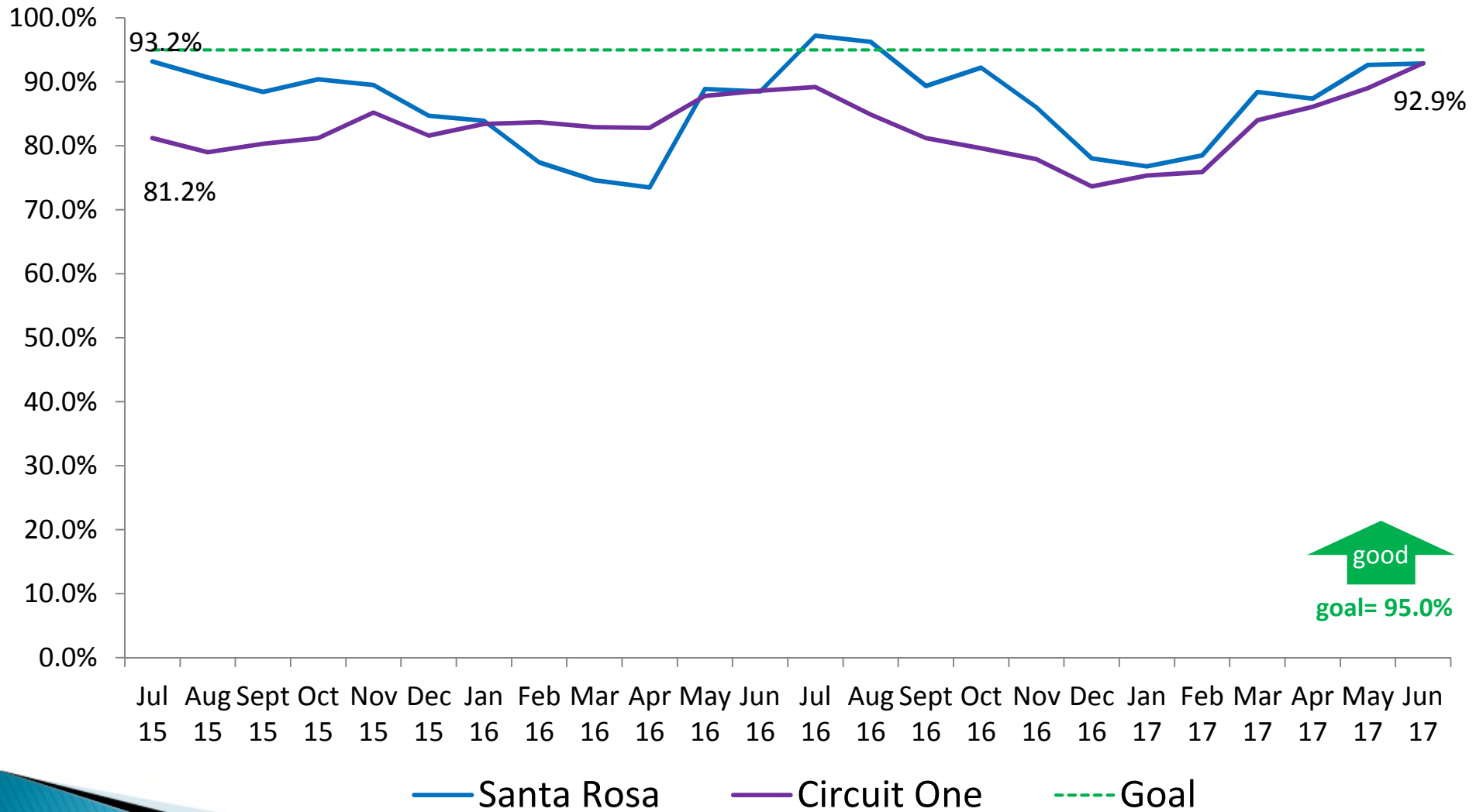
Performance Measures

» Well-Being

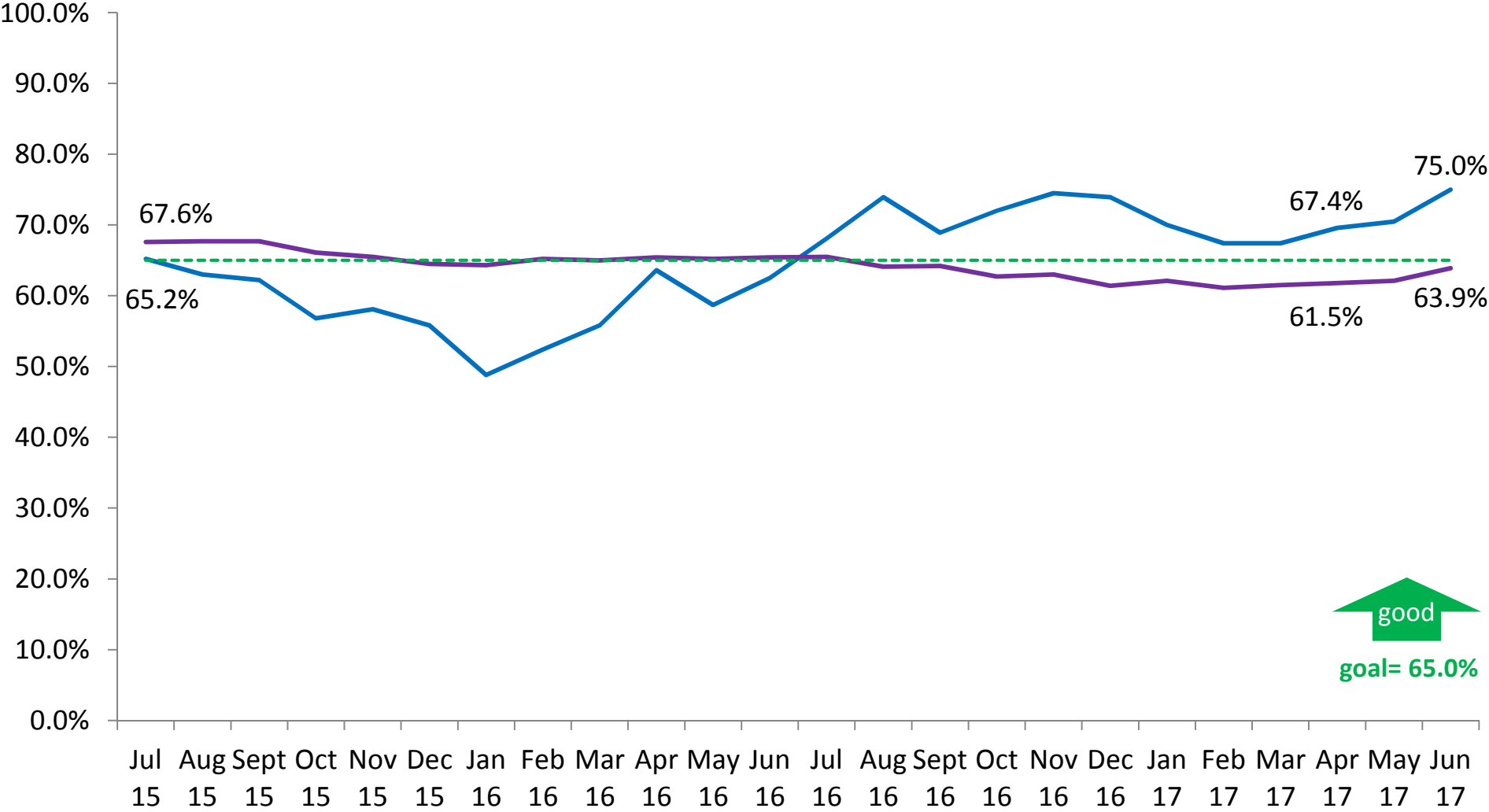
Children in Out-of-Home Care Who Received Medical Services within the Last 12 Months Santa Rosa County



Children in Out-of-Home Care Who Received Dental Services within the Last 7 Months Santa Rosa County



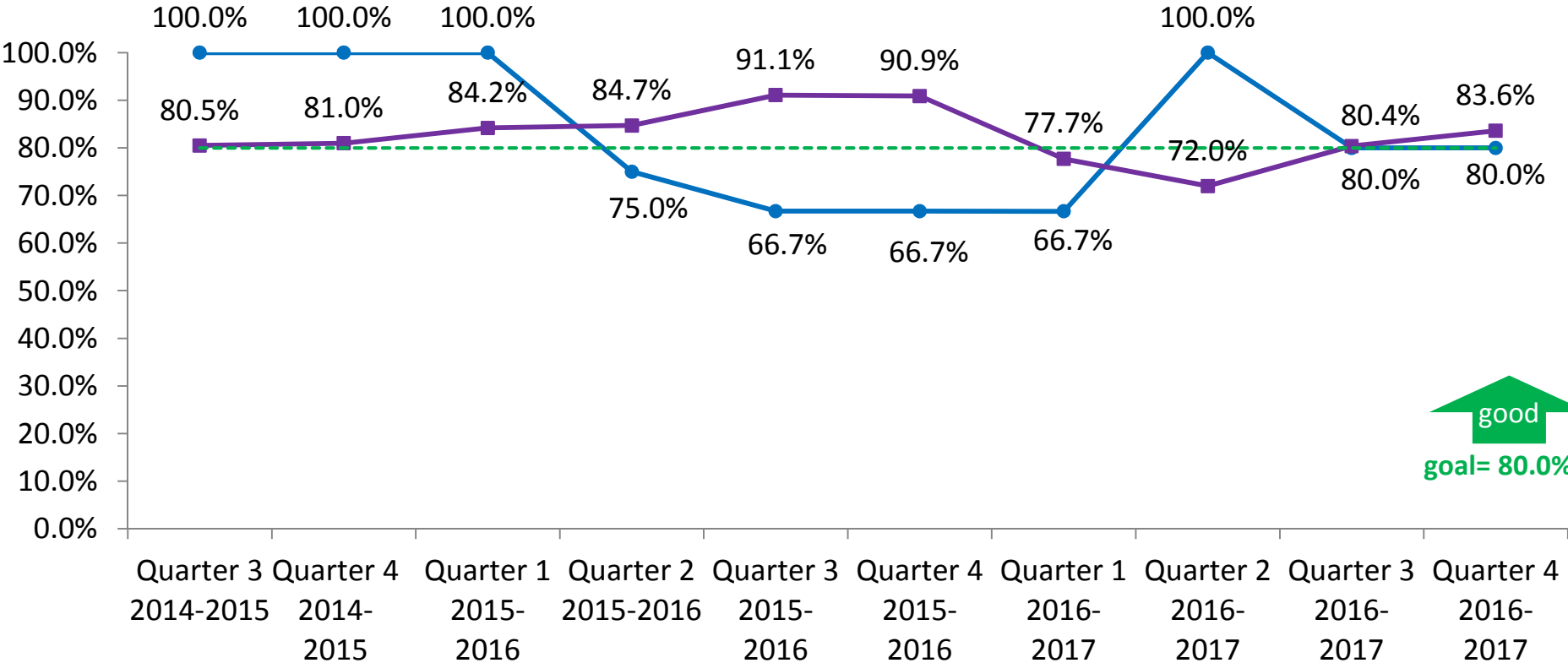
Sibling Groups Where All Siblings Are Placed Together Santa Rosa County



↑ good
goal= 65.0%

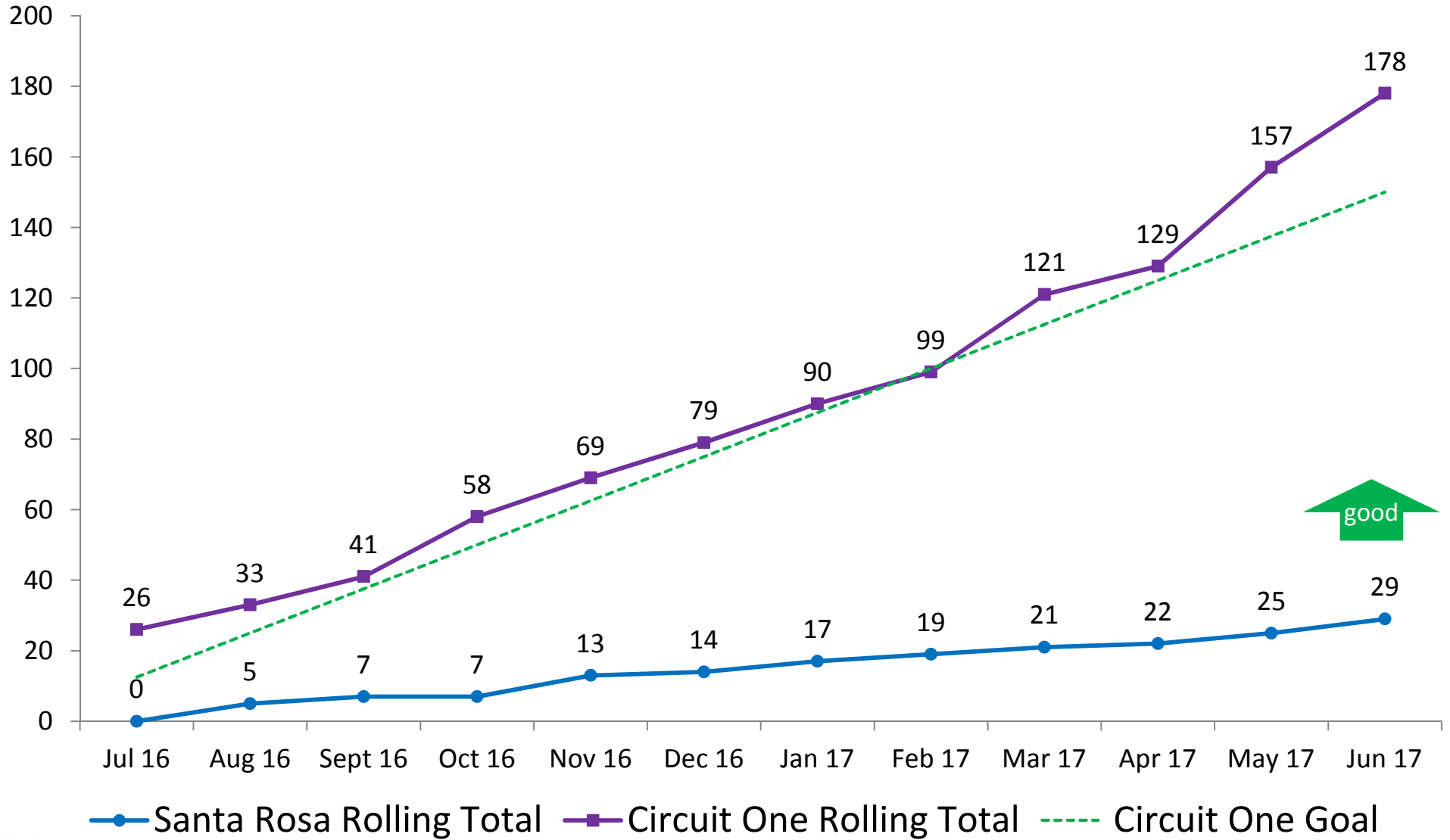
— Santa Rosa — Circuit One - - - Goal

Young Adults Who Aged Out of Foster Care Who Have Completed or Are Enrolled in Secondary Education, Vocational Training, or Adult Education Santa Rosa County



—●— Santa Rosa
 —■— Circuit One
 - - - Goal

Initial Foster Home Beds Licensed Santa Rosa County and Circuit One



FFN and Contract Provider Foster Home Beds Santa Rosa County

