

FFN Adoptions Community Alliance Data

FamiliesFirst Network
June 2017



Trends and Updates

April to June 2017

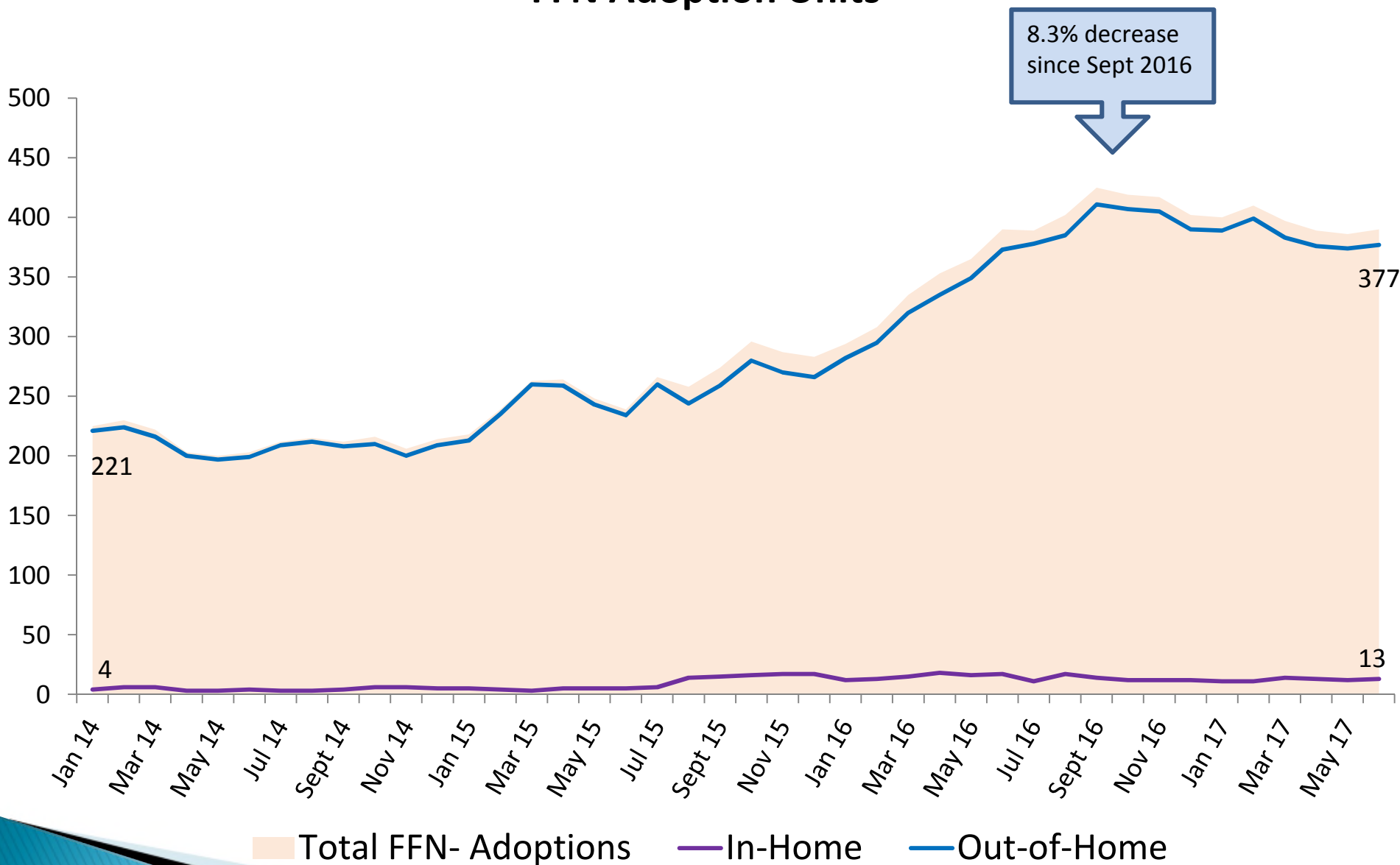
- While there was a large spike of children in out-of-home care from December 2015 to September 2016, there has been a small downward trend the past three quarters resulting in a 8.3% decrease since September 2016.
- There has been a downward trend for children in foster home placements for the past eight months resulting in an 34.6% decrease of children in foster home placements since October 2016.
 - ▶ The performance measure targets have been met or exceeded for the following measures:
 - Children under supervision seen every 30 days
 - Rate of abuse or neglect per day while in out-of-home care
 - Rate of placement moves per 1,000 days in out-of-home care
 - Children achieving permanency in 12 months for children in out-of-home care 12 to 23 months
 - Children in out-of-home care who received medical services within the last 12 months
 - Sibling groups where all siblings are placed together
 - Young adults who aged out of foster care who have completed or are enrolled in secondary education, vocational training, or adult education
 - ▶ There has been a net loss of 44 traditional foster home beds since June 30, 2016.
 - ▶ As of 6/30/2017, there are 286 traditional foster homes with a total capacity of 586 beds in Circuit One.
 - ▶ Adoptions far exceeded the annual goal of 220 adoptions.

Children Receiving Services

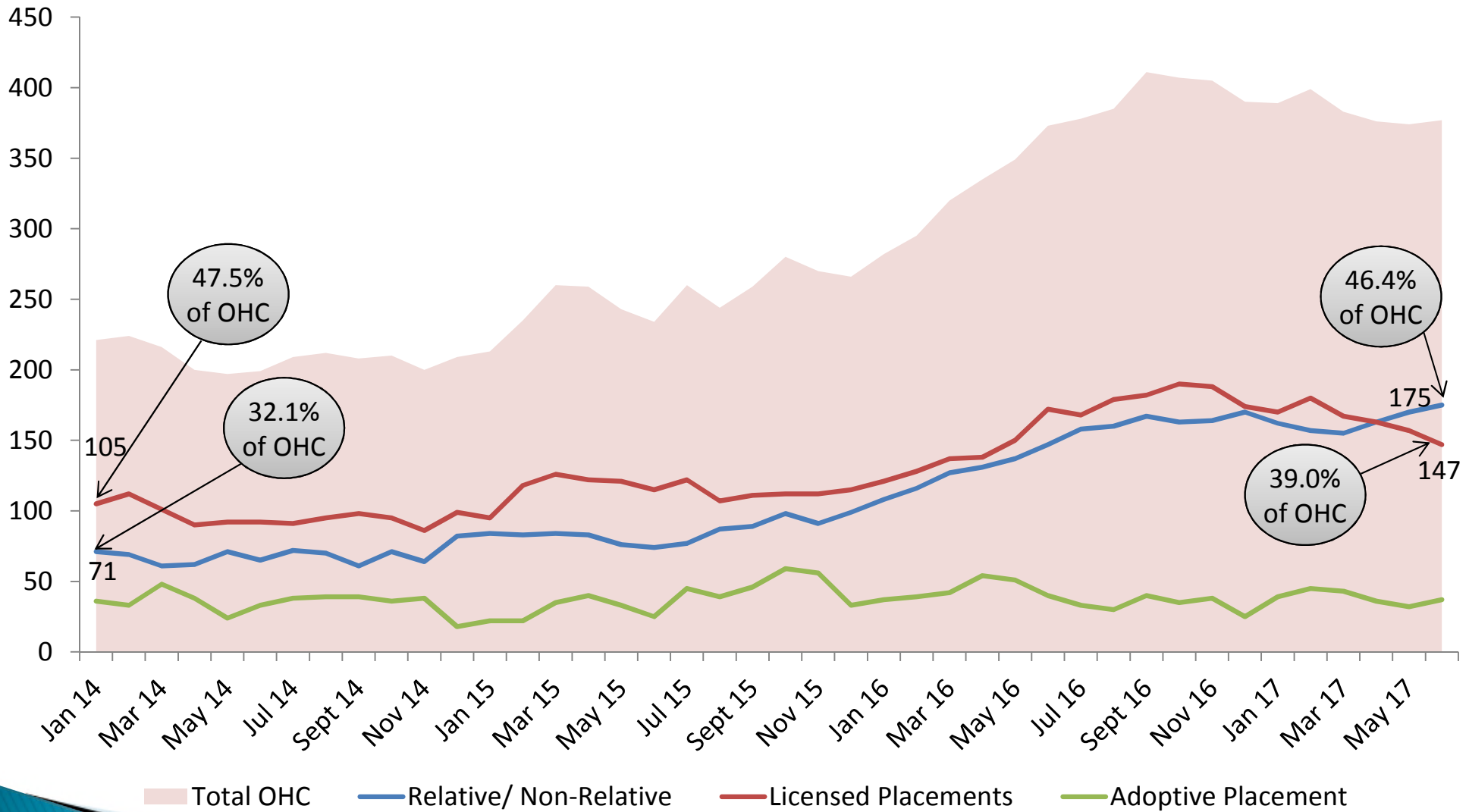


Children Receiving Services by Service Type

FFN Adoption Units



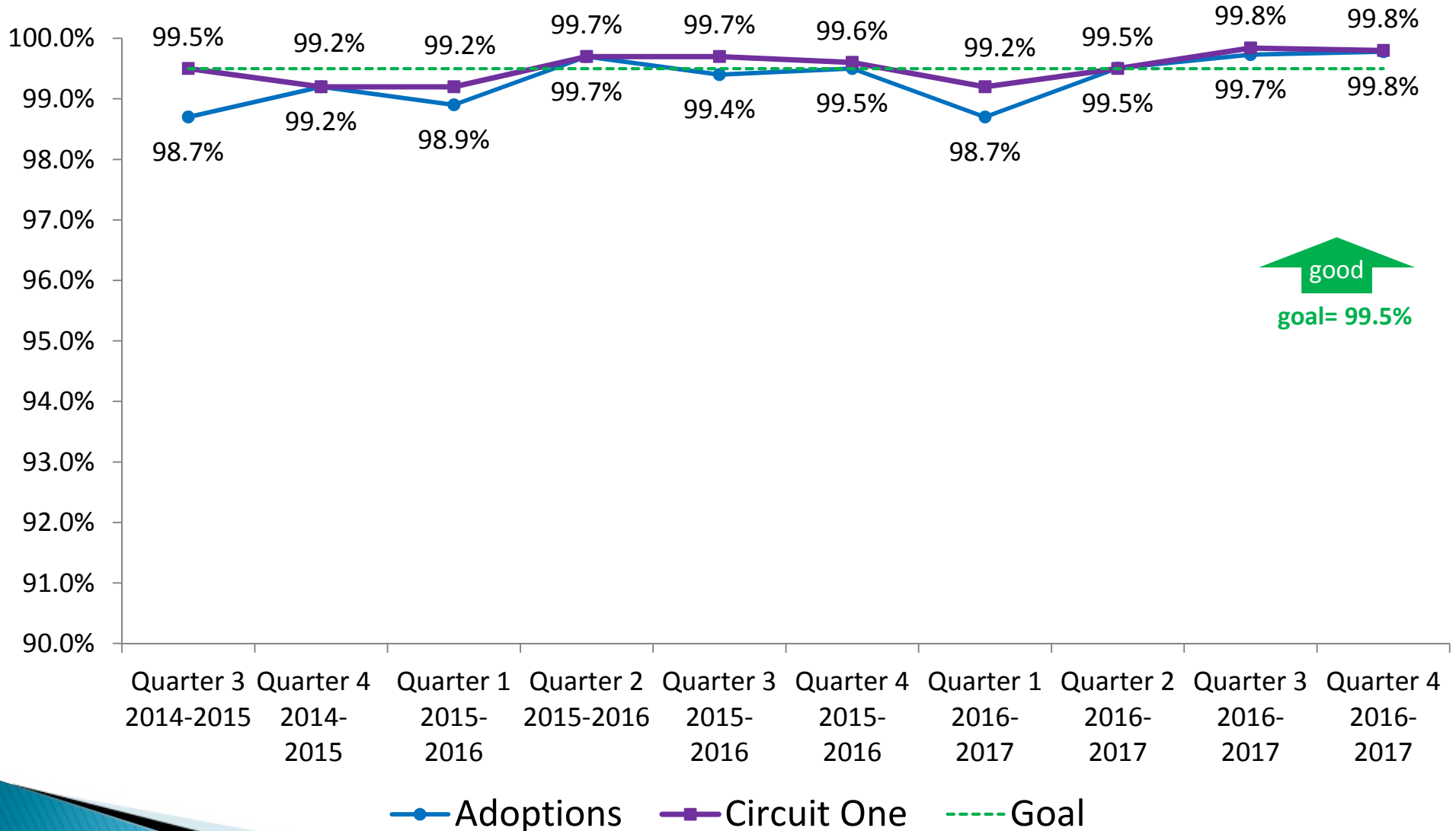
Comparison of Children in Out-of-Home Care and Type of Placement FFN Adoption Units



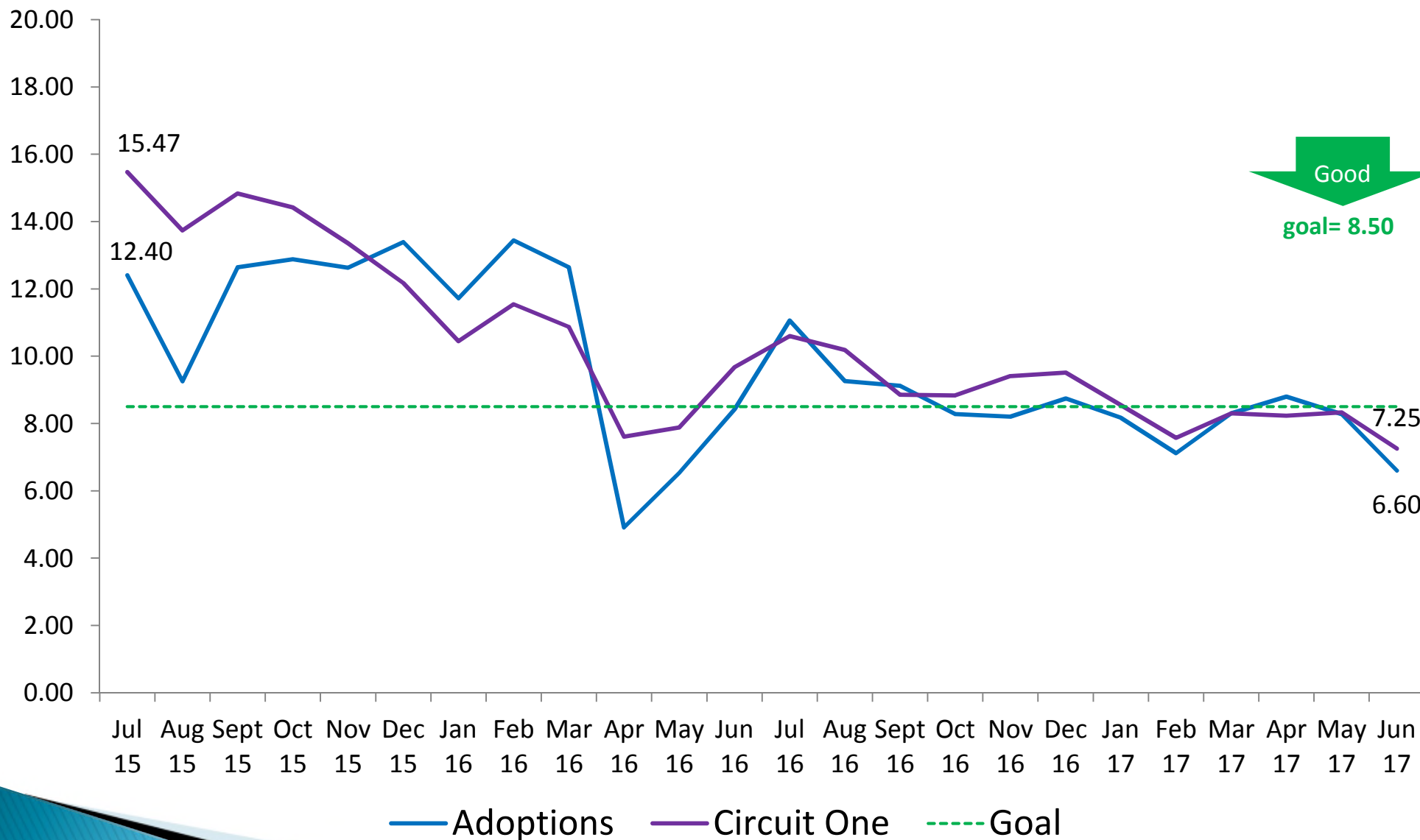
Performance Measures

» Safety

Percent of Children Under Supervision Seen Every 30 Days FFN Adoption Units



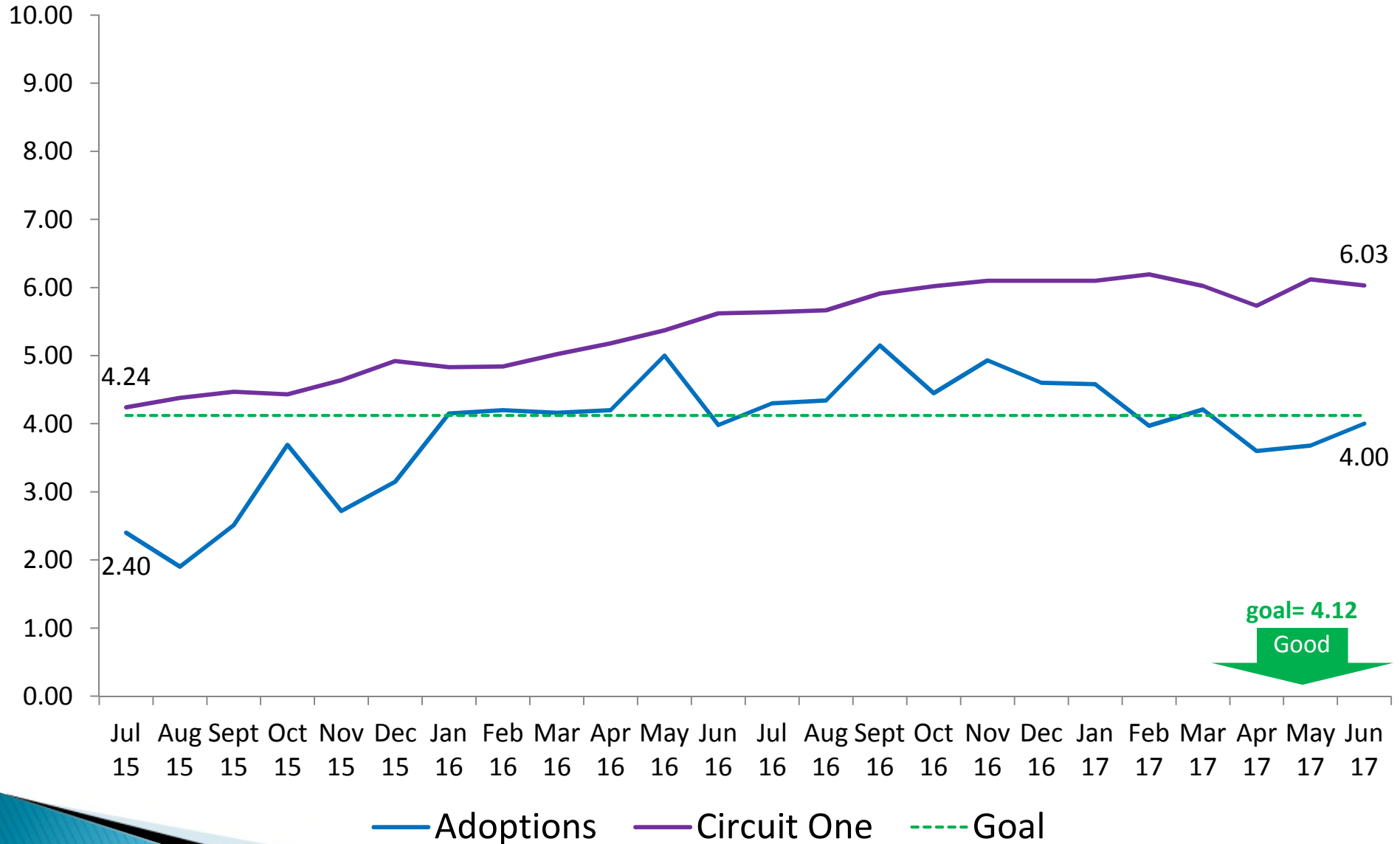
Rate of Abuse or Neglect per Day While in Out-of-Home Care FFN Adoption Units



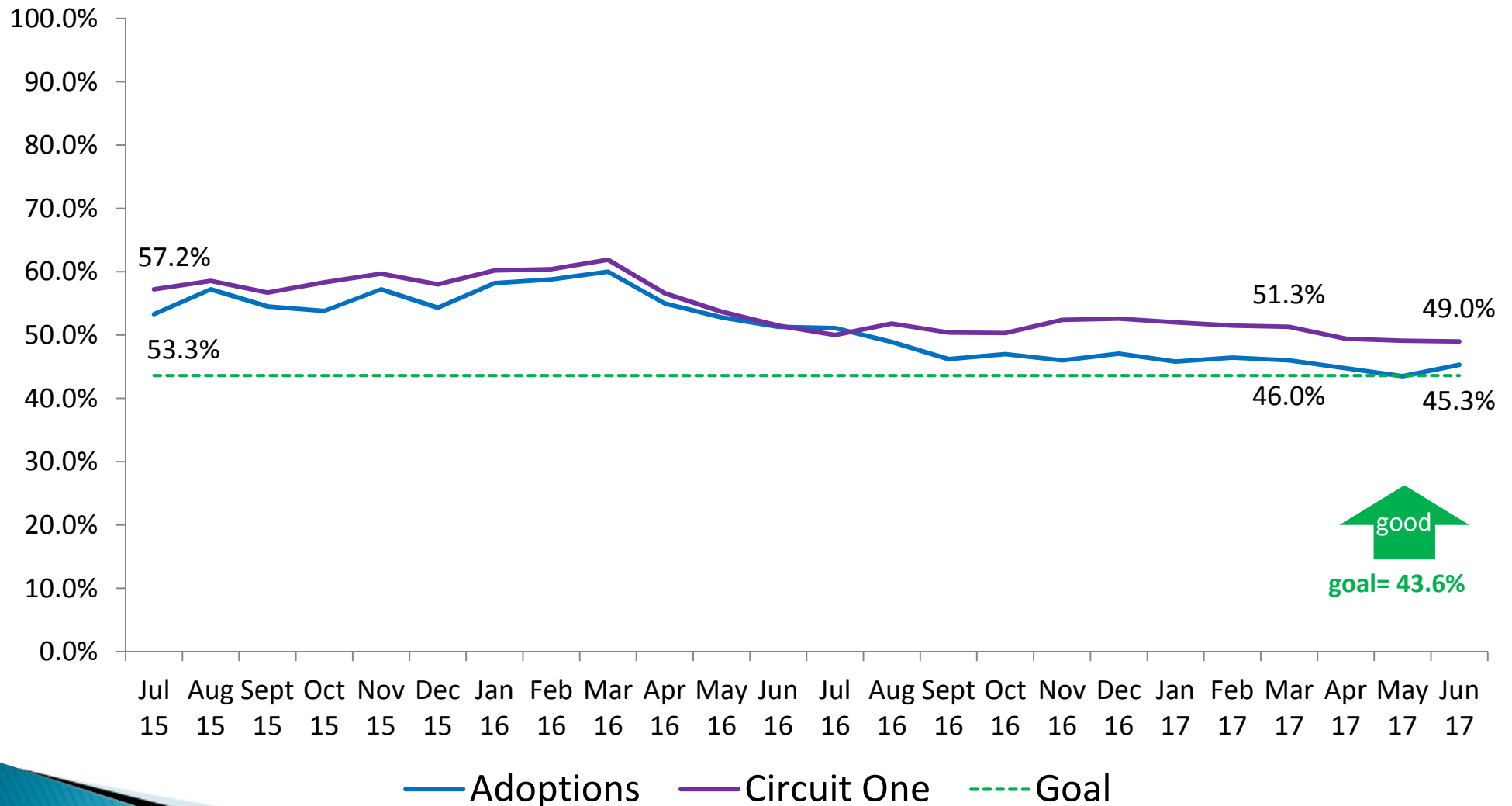
Performance Measures

» Permanency

Rate of Placement Moves Per 1,000 Days in Out-of-Home Care FFN Adoption Units



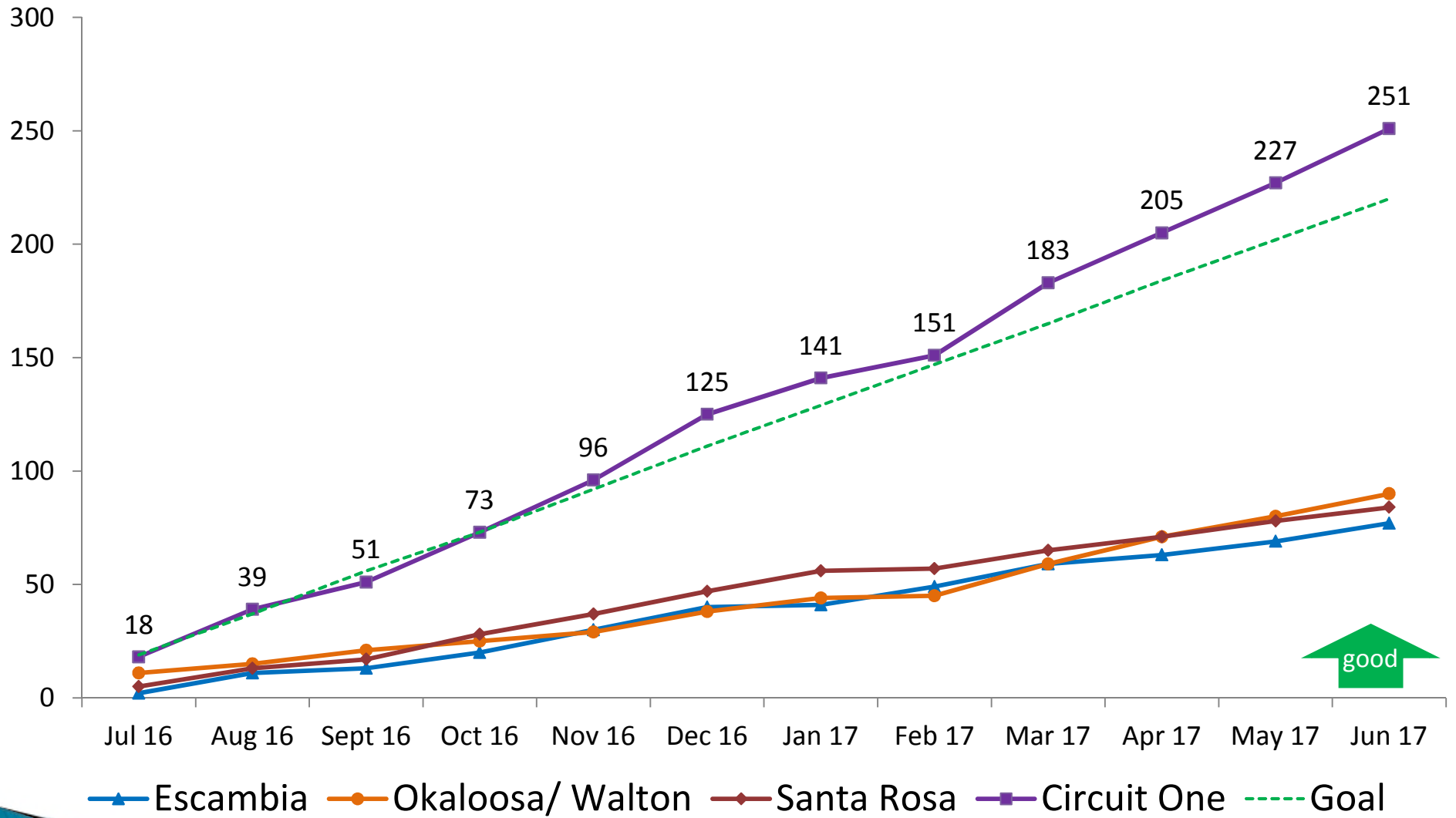
Children Achieving Permanency in 12 Months for Children in Out-of-Home Care 12 to 23 Months FFN Adoption Units



Adoption Finalizations

of children with finalized adoptions (cumulative)

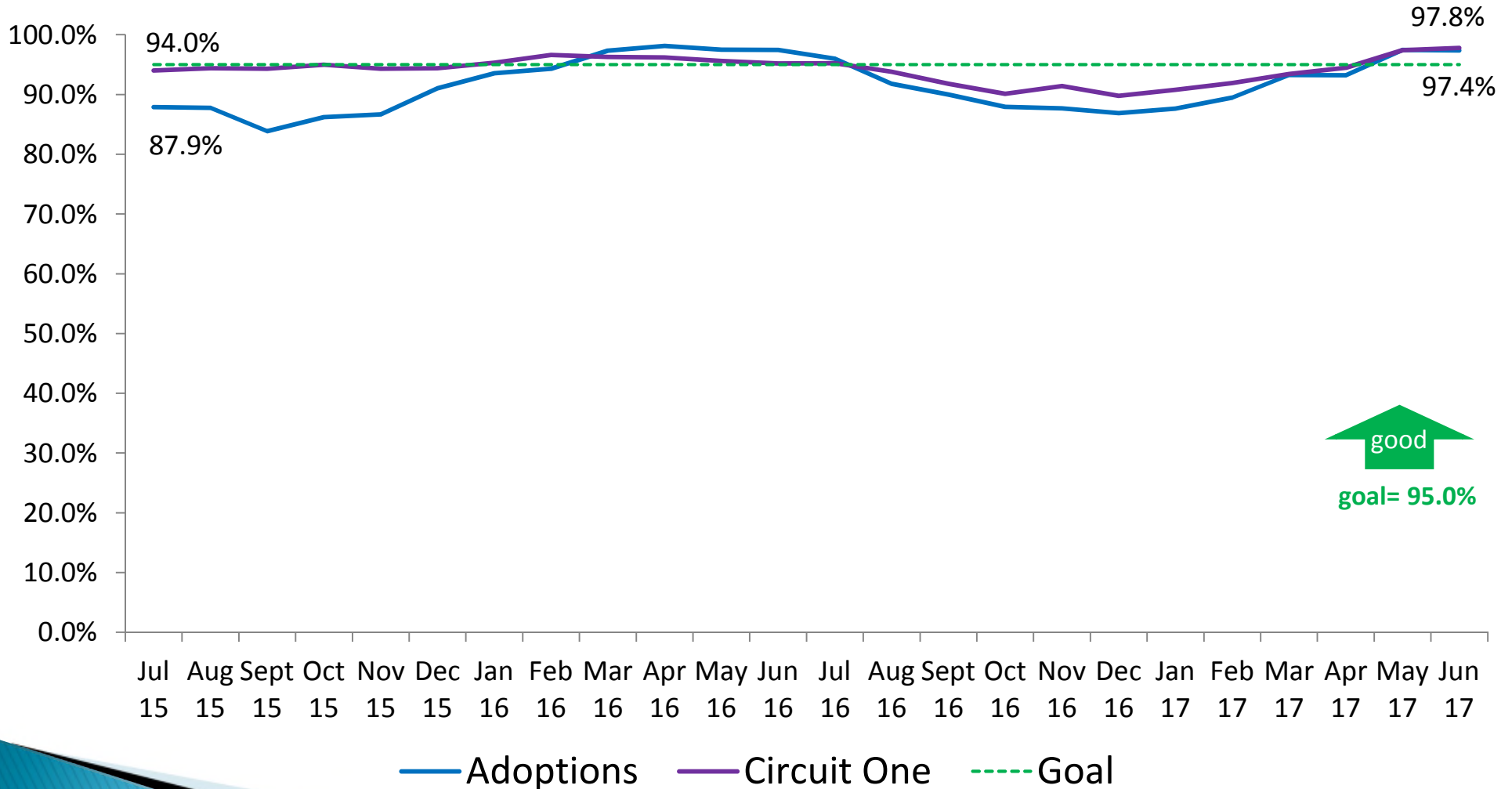
FFN Adoption Units



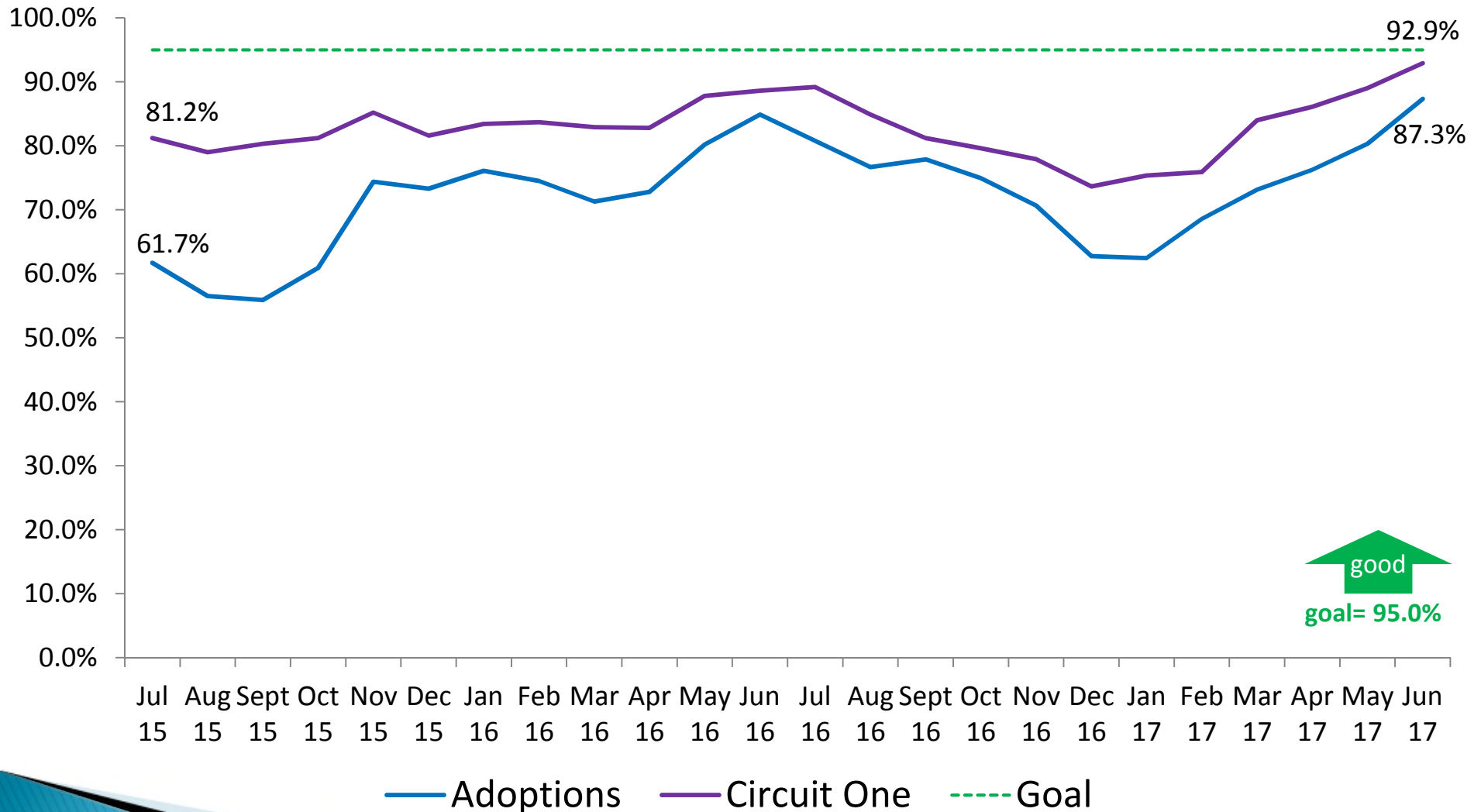
Performance Measures

» Well-Being

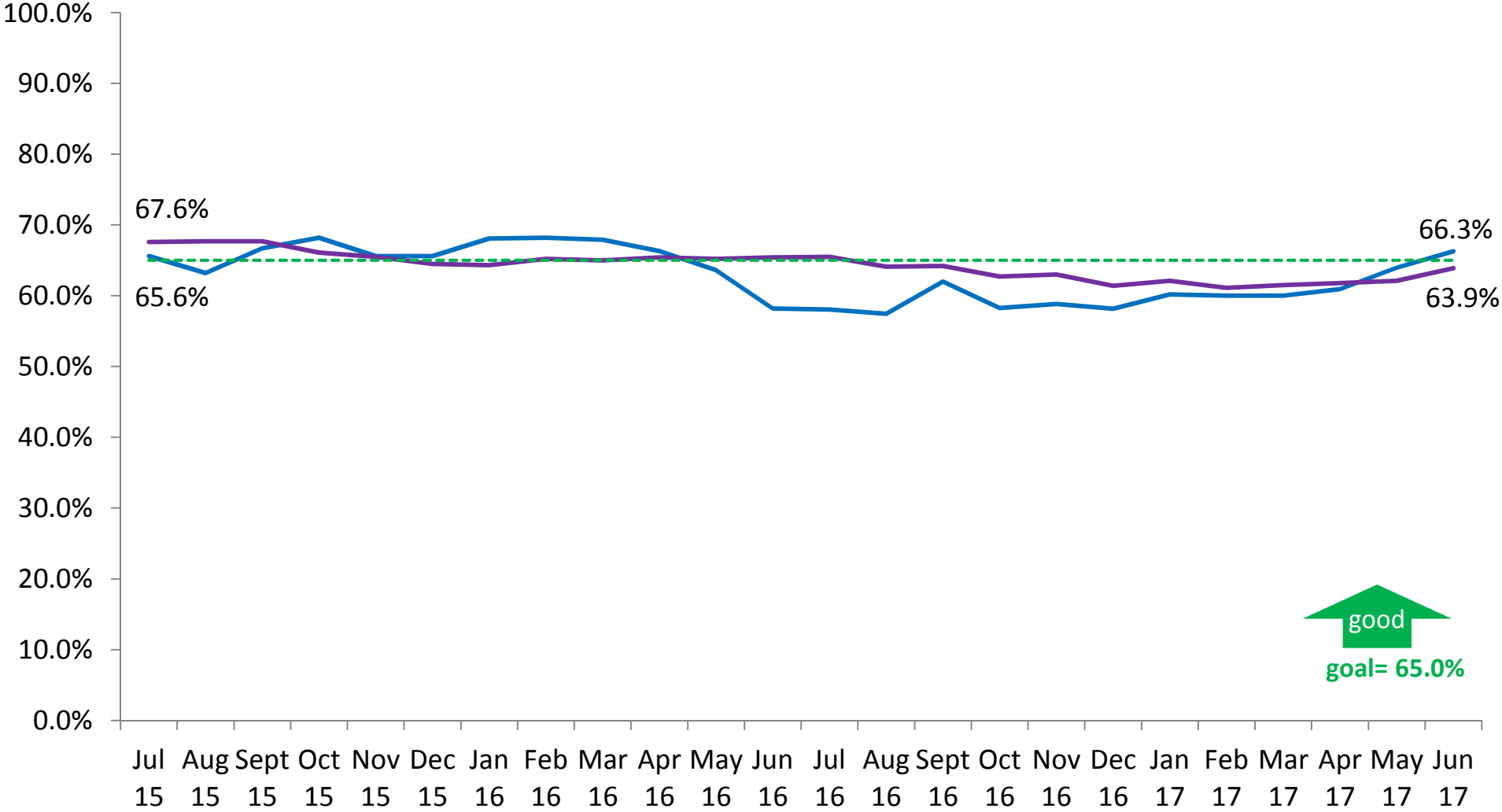
Children in Out-of-Home Care Who Received Medical Services within the Last 12 Months FFN Adoption Units



Children in Out-of-Home Care Who Received Dental Services within the Last 7 Months FFN Adoption Units



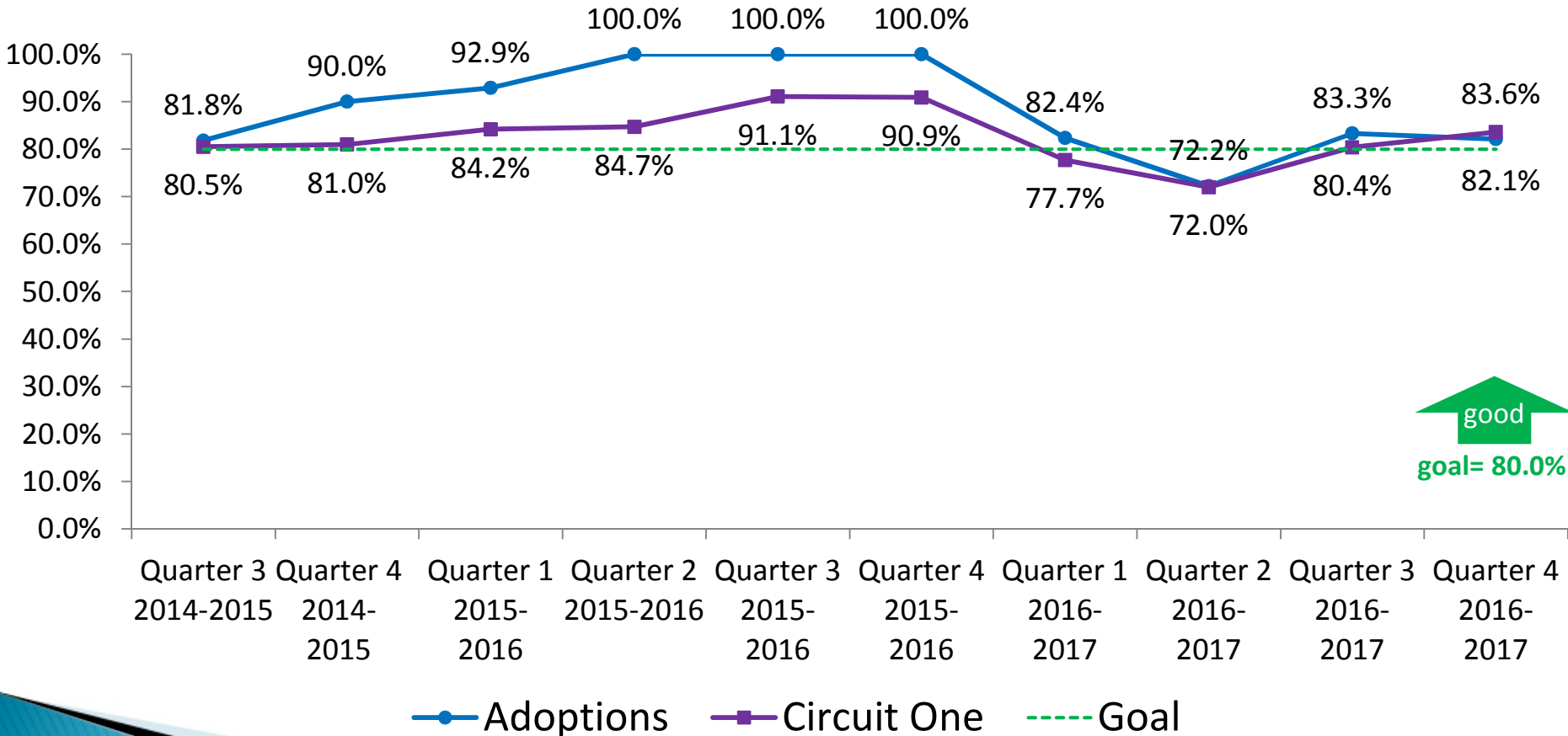
Sibling Groups Where All Siblings Are Placed Together FFN Adoption Units



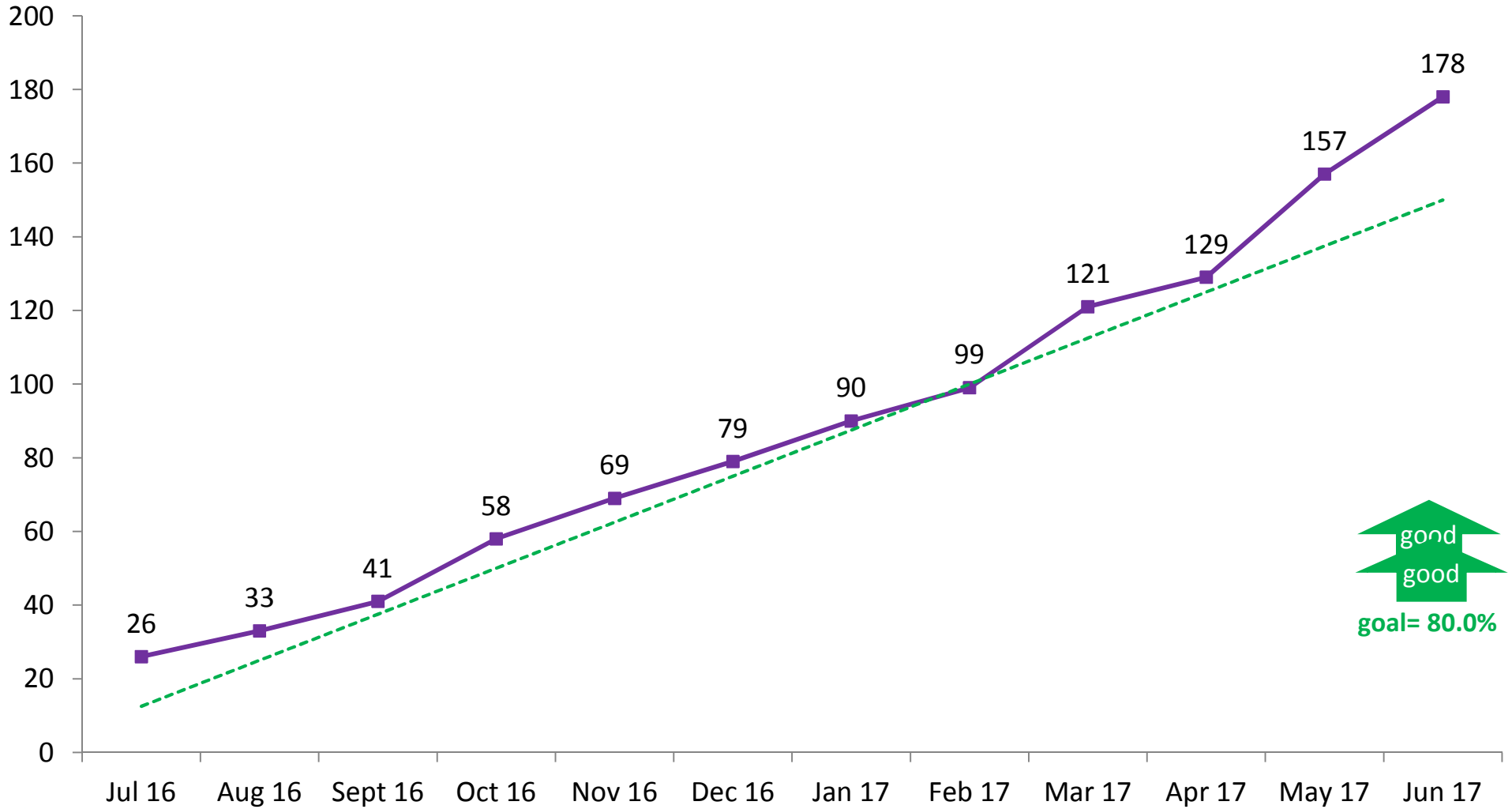
— Adoptions — Circuit One - - - Goal

Young Adults Who Aged Out of Foster Care Who Have Completed or Are Enrolled in Secondary Education, Vocational Training, or Adult Education

FFN Adoption Units



Initial Foster Home Beds Licensed Circuit One

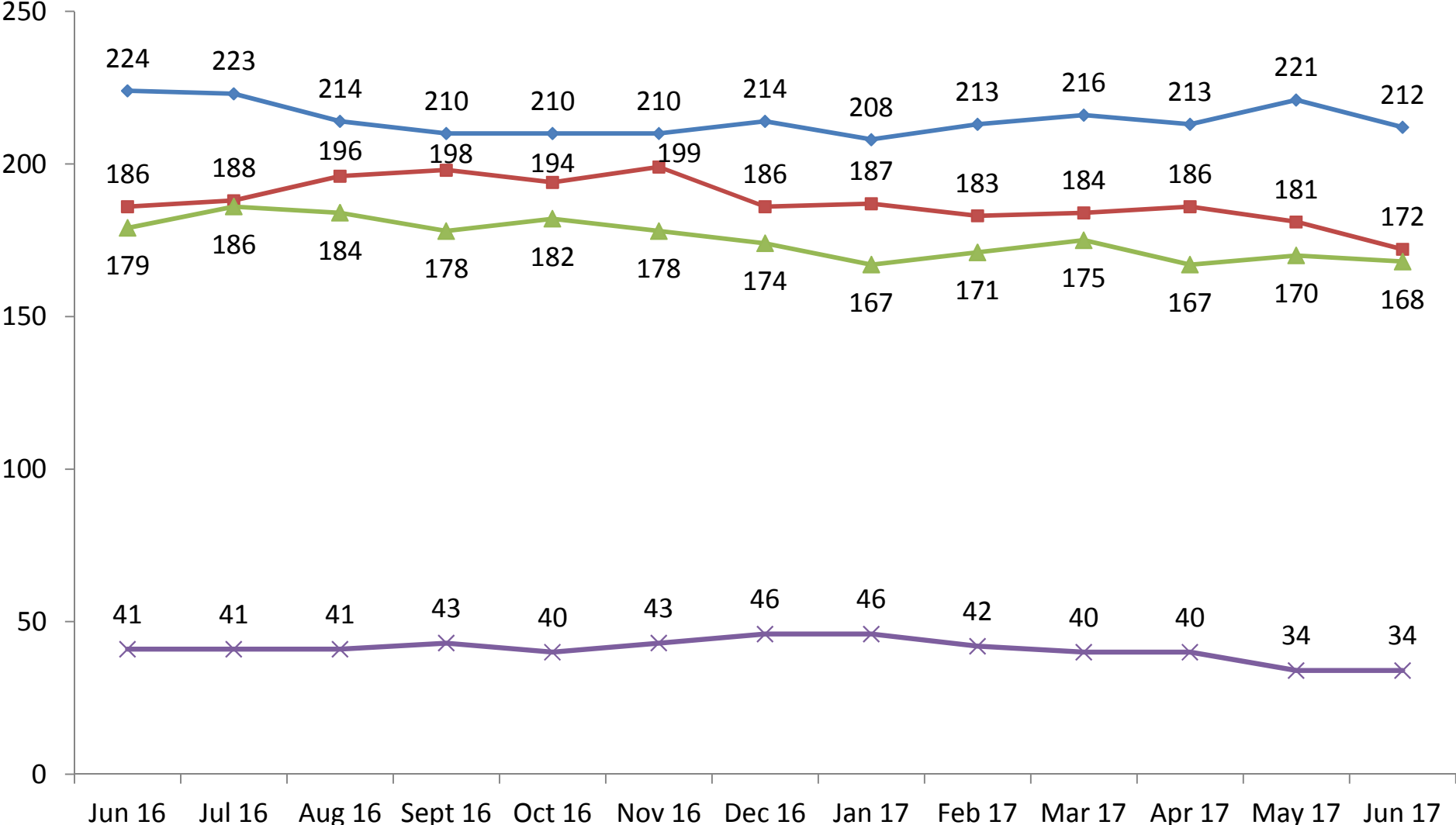


—■ Circuit One Rolling Total

- - - Circuit One Goal

good
good
goal= 80.0%

FFN and Contract Provider Foster Home Beds Circuit One



Escambia Beds Santa Rosa Beds Okaloosa Beds Walton Beds