



California's Hub and Spoke System in Los Angeles County - A Component of California's State Targeted Response to the Opioid Crisis

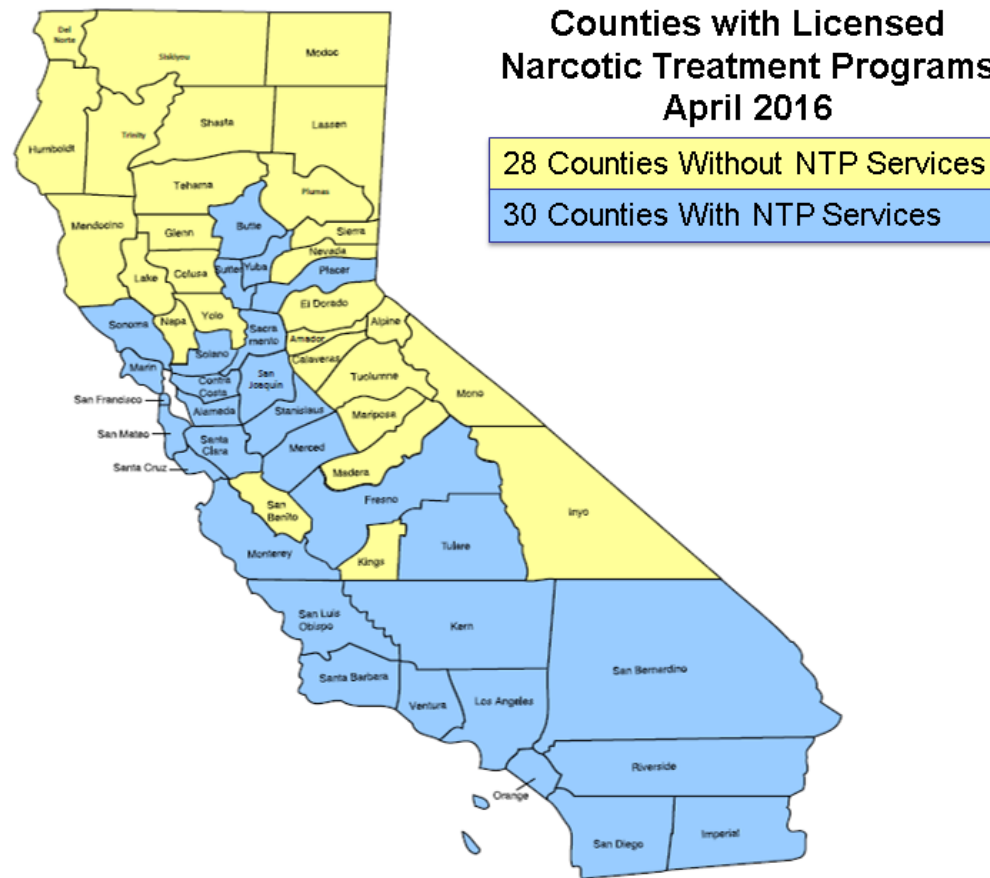
Gloria Miele, PhD, Learning Collaborative Coordinator, Hub and
Spoke MAT Expansion Project

UCLA Integrated Substance Abuse Programs

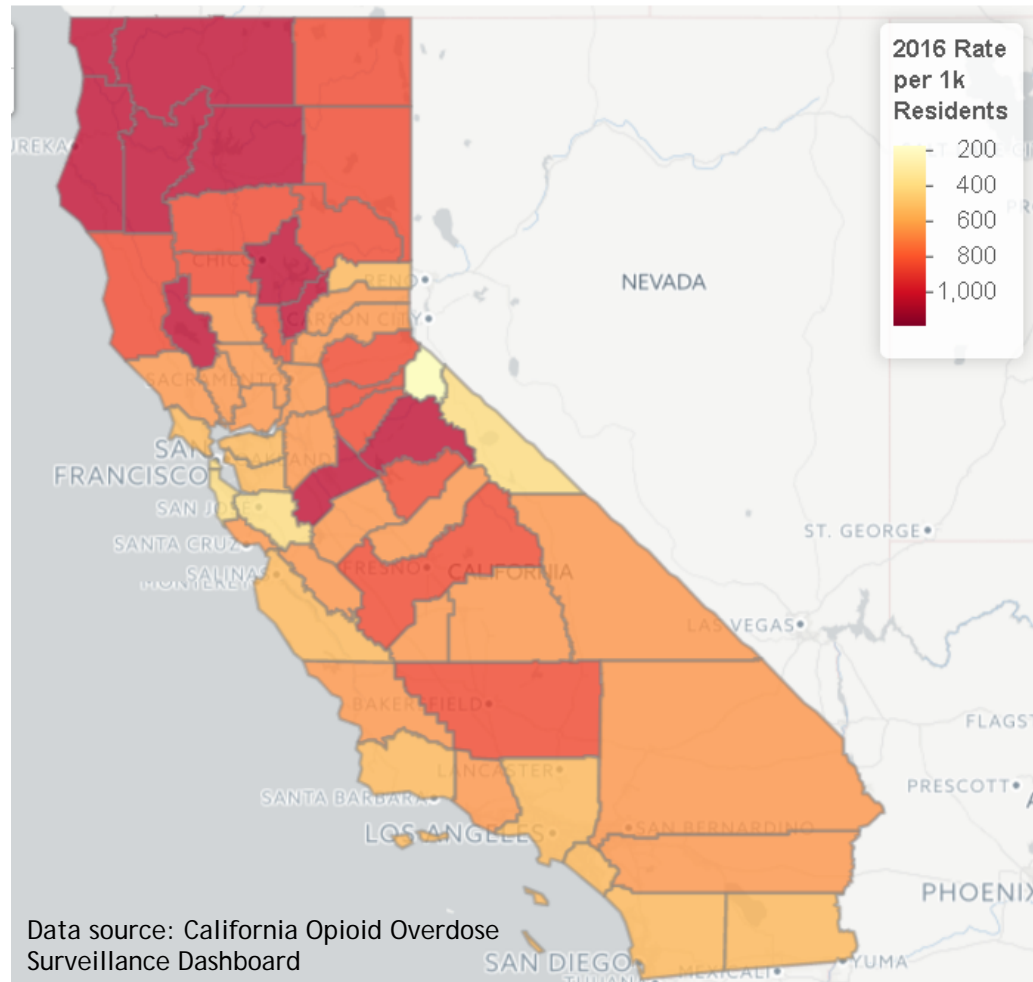
Los Angeles County Annual Drug Court Conference

June 7, 2018

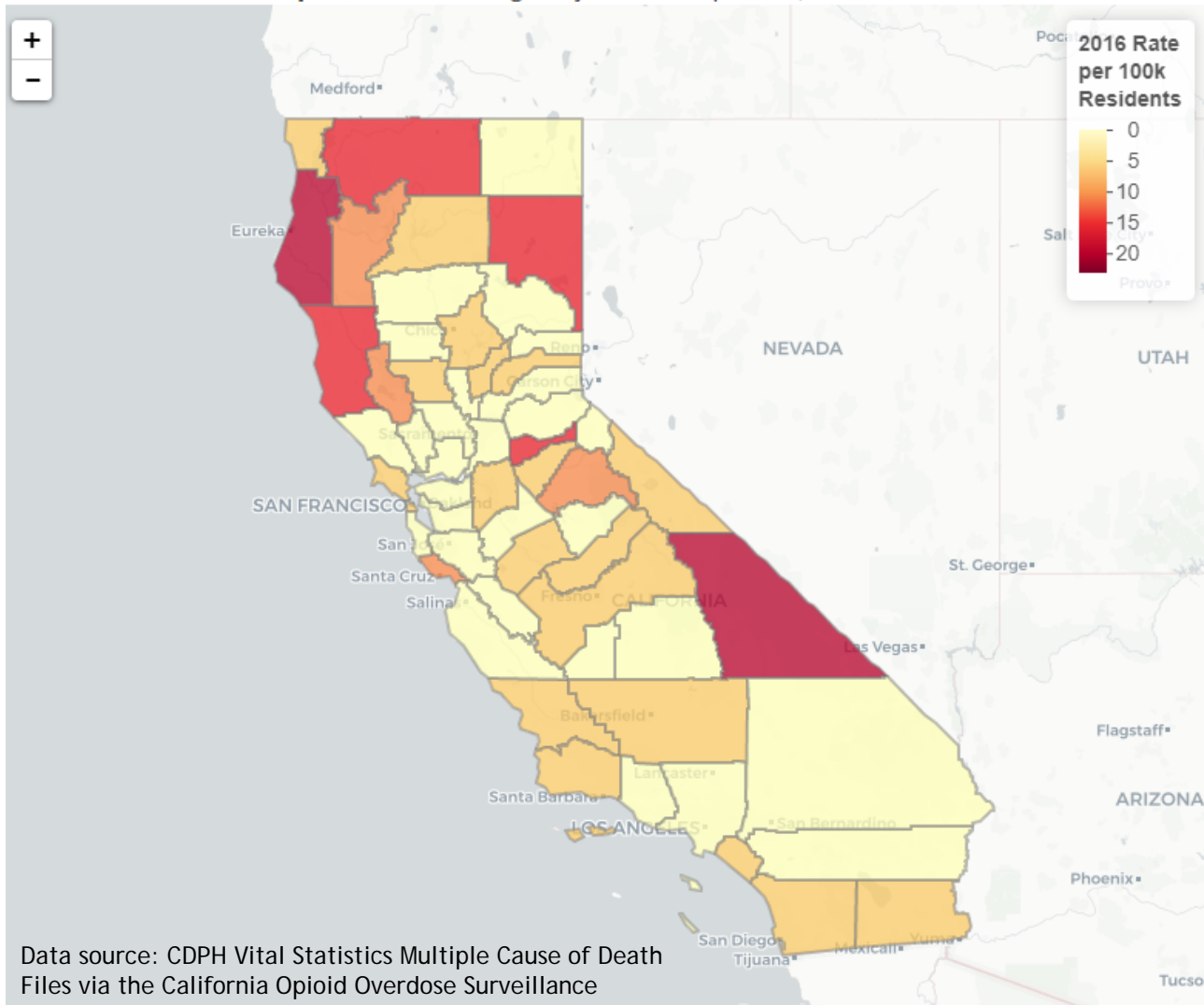
Current Availability of MAT



California Prescriptions - Total Population - 2016
Opioid Prescriptions by Patient Location: Age-Adjusted Rate per 1,000 Residents



California Deaths - Total Population - 2016
All Opioid Overdose: Age-Adjusted Rate per 100,000 Residents



Data source: CDPH Vital Statistics Multiple Cause of Death Files via the California Opioid Overdose Surveillance Dashboard

CA H&SS Implementation

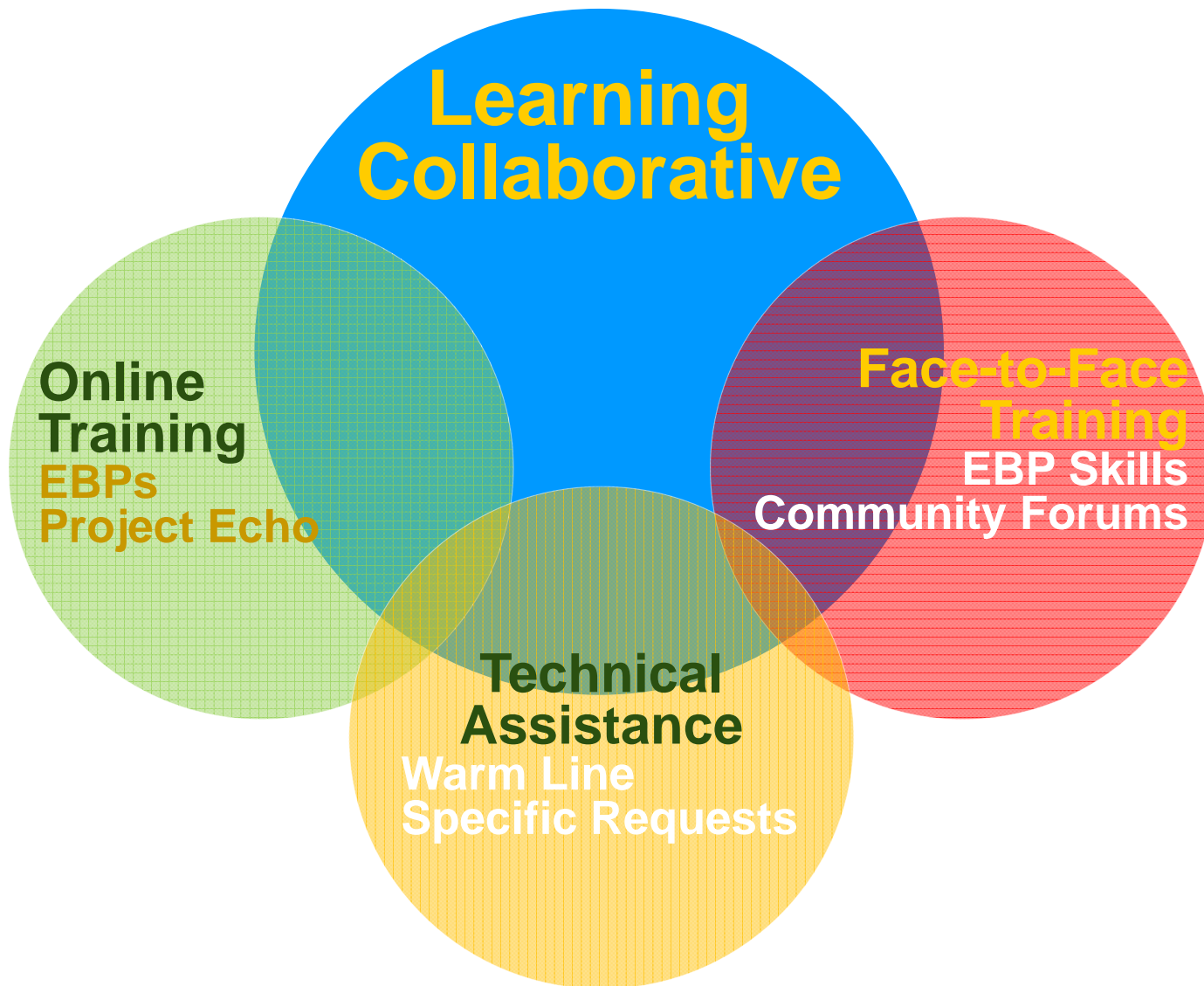


- \$78 million allocated to CA H&SS treatment services
- 19 Hubs
- Over 100 Spokes covering 30+ counties. This includes 7 of the 10 counties with highest opioid overdose rates

No Wrong Door



Training and Technical Assistance





California Opioid Hub and Spoke Project Learning Collaboratives

- Engage H&SS participants in process of shared learning and experience to facilitate implementation of services, assist with procedural changes, and provide opportunities for interactive problem solving

**Learning
Collaborative**

California H&SS Learning Collaborative

- ▶ Quarterly half-day sessions
- ▶ Attendance: Physicians, practice administrators, nurses, behavioral health specialists
- ▶ Examine and discuss practice policies, workflow information and clinical skills
- ▶ Build a network of regional expertise and support
- ▶ Review quality improvement feedback to improve practice



**Learning
Collaborative**



California H&SS Project ECHO

- Case-based learning
- CE presentation, case presentation, expert feedback and discussion
- Topics will vary and evolve as needs arise
- Monthly web-based sessions
 - Starts Monday, January 29th and continues on the 4th Monday of the month* in 2018

* May 21; no meeting in December

**Online
Training
EBPs
Project Echo**

Training and Technical Assistance

Online Training

- ▶ Online, self-paced training to disseminate information and provide foundational understanding
 - ▶ Tour of Motivational Interviewing
 - ▶ Cognitive behavioral treatment
 - ▶ Buprenorphine Waiver training

Online
Training
EBPs
Project Echo

Training and Technical Assistance

Face-to-Face Training

- ▶ Skill-based trainings
 - ▶ Provide guided practice of skills with feedback (e.g., practicing MI skills)
 - ▶ Demonstrations of evidence-based practices
 - ▶ Developing strategies for implementation in clinical settings
- ▶ Community Forums on MAT
 - ▶ Distance and face-to-face training for the community at large to broaden understanding of MAT, why it's important, and how the medicines work
 - ▶ Opportunity for discussion of hopes and concerns among participants about the planned expansion of MAT services



Face-to-Face
Training
EBP Skills
Community Forums

Training and Technical Assistance

Technical Assistance Services

- ▶ Expert consultation warm-line
 - ▶ UCSF Clinician Consultation Center
 - ▶ Available 6am-5pm M-F
 - ▶ (855) 300-3595
- ▶ Individualized Technical Assistance
 - ▶ H&SS participants can request specific technical assistance or training



**Technical
Assistance**
Warm Line
Specific Requests

California Society of Addiction Medicine (CSAM)

- Provide support to providers in spokes to build confidence in prescribing
- Mentored learning experiences
- CSAM Annual Conference (Aug 30-Sept.
- Updating *Guidelines for Physicians Working in CA Opioid Treatment Programs* (2009)
- Educational webinars

MD Facilitator Project

Led by Mark McGovern, Ph.D.

- ▶ Matching buprenorphine prescribers with Hub and Spoke networks
- ▶ Ensure greater consistency and support in OBOT treatment
- ▶ Hired as consultants available for mentoring, building spoke capacity
 - ▶ Inductions, tapering, complex patient issues, hub and spoke transfers, addressing stigma, etc.
- ▶ Link with Hub coordinators to determine needs
- ▶ Who are you using? What do you need?

Pain and Addiction Conference

- ▶ Scheduling for September throughout the state
- ▶ Coordinating with California Primary Care Association (CPCA)
- ▶ Keynote, provider panel and case discussions
- ▶ Targeting primary care physicians to address complexities of treating patients with pain and addiction and increasing interest in becoming x-waivered prescribers
- ▶ San Bernardino, Weds., Sept. 26
- ▶ Other dates and locations TBD

ED Bridge/Project SHOUT

- ▶ Connecting ED Bridge with Hub and Spoke networks

ED Bridge Website: www.ed-bridge.org (still in development - Bup guidelines for ED settings)

Project SHOUT Website: www.projectshout.org (includes Bup guidelines for hospital settings)

Welcome to the California Hub and Spoke Monthly Newsletter

MAT Expansion Project

The California Hub and Spoke System (CA H&SS), otherwise known as Medication Assisted Treatment (MAT) Expansion Project, is being implemented throughout California as a way to improve, expand and increase access to MAT services across the state.

Within a two year grant period, the MAT Expansion Program is projected to serve over 20,000 individuals with Opioid Use Disorders (OUD) to address the opioid crisis in California. The main goals are to prevent overdose and treat OUD as a chronic disease. Visit our [website](#) for more information.

CA H&SS IMPLEMENTATION

Each region has a specialized addiction center of expertise, known as the Hub, that is an opioid treatment program (OTP). There are currently 10 funded Hubs in the state of California. Each Hub is connected to a Spoke, which is any office or clinic with a buprenorphine prescriber. The project will begin with approximately 110 spokes across the state.



Spokes will have access to a dedicated MAT team, consisting of one registered nurse and one licensed clinical social worker for every one hundred patients on buprenorphine under Medicaid. Spokes have the ability to refer complex patients to the Hub in their region for stabilization. MAT teams are essential to the success and effectiveness of Spokes.

This program will improve access to MAT services, especially in counties with the highest overdose rates. The implementation of the CA H&SS will increase the total number of physicians and nurse practitioners prescribing buprenorphine, thereby increasing the availability of MAT for patients with opioid use disorders.

The California Hub and Spoke System aims to deal with the opioid crisis in California through a collaborative effort of relevant stakeholders. These programs stem from the idea that opioid use disorders should be treated as a chronic disease. The MAT Expansion Project aims to reduce stigma and pave the way towards a progressive solution for the opioid epidemic.

Resources

[UCLA ISAP H&SS WEB SITE](#)

[Drug Deaths in America Are Rising Faster Than Ever](#)—by Josh Katz

[A Long And Winding Road: Kicking Heroin in an Opioid Treatment Desert](#)—by Brian Rinker

[California's Answer To The Opioid Crisis](#)—by Jeremy D. Martinez, MD

[Vermont Hub-and-Spoke Model of Care For Opioid Use Disorder: Development, Implementation, and Impact](#)—by John R. Brooklyn, MD, and Stacey C. Sigmon, PhD

[Using a Learning Collaborative Strategy With Office -based Practices to Increase Access and Improve Quality of Care for Patients With Opioid Use Disorders](#)— by Benjamin R. Nordstrom, MD, PhD

[Motivational Interviewing Training](#) (Self paced)

[PSATTC Resources](#)

[California Opioid Surveillance Dashboard](#)

Upcoming Events

[Learning Collaborative Session 1](#)
Choose one session on [September 25](#) or [September 28](#)

[California Primary Care Association Annual Conference](#)
October 12 — October 13
Anaheim, CA

[Integrating Substance Use, Mental Health, and Primary Care Services](#)
October 25 — October 26
Universal City, CA

[California Opioid Policy Summit](#)
November 8 — November 9

Newsletter

Other Communication

- ▶ CAHSS ListServ
 - ▶ Coordinated communication channel for project news and activities
 - ▶ CAHSS ListServ
 - ▶ Email Kim (kimberlyvalencia@mednet.ucla.edu) to be added
- ▶ Implementation web site
 - ▶ <http://uclaisap.org/ca-hubandspoke>

Questions? gmiele@mednet.ucla.edu



Hub and Spoke Program Evaluation

Evaluation Goals

▶ Outcomes

- ▶ Statewide (MAT access, OUD & overdose numbers, opioid prescription numbers, provider numbers, number of pts in treatment)
- ▶ Within H&S System (new MAT initiations, treatment retention, linkage)

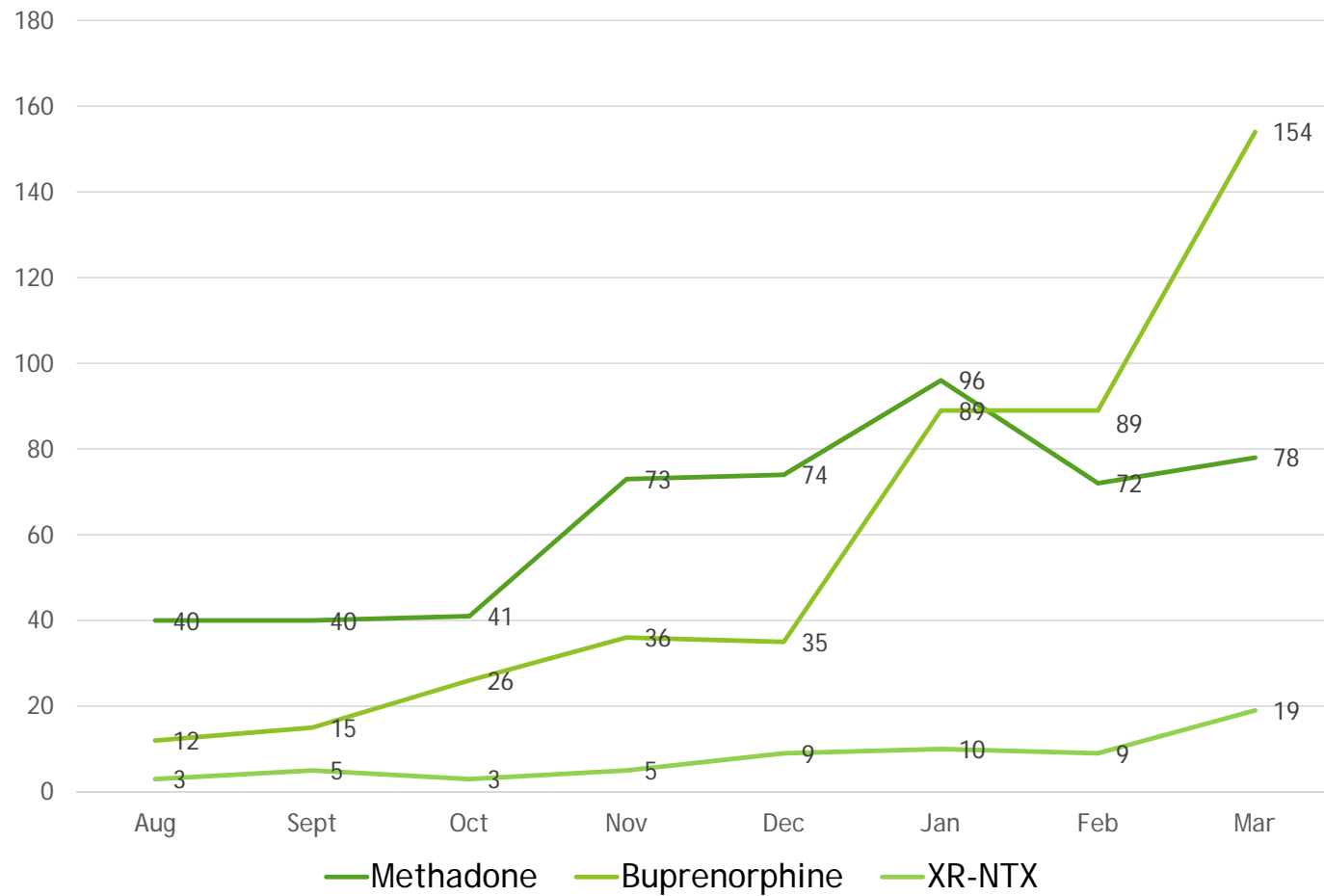
▶ Process

- ▶ Document best practices
 - ▶ Lessons learned
- ▶ Provide feedback for Learning Collaborative / Training

Data Sources

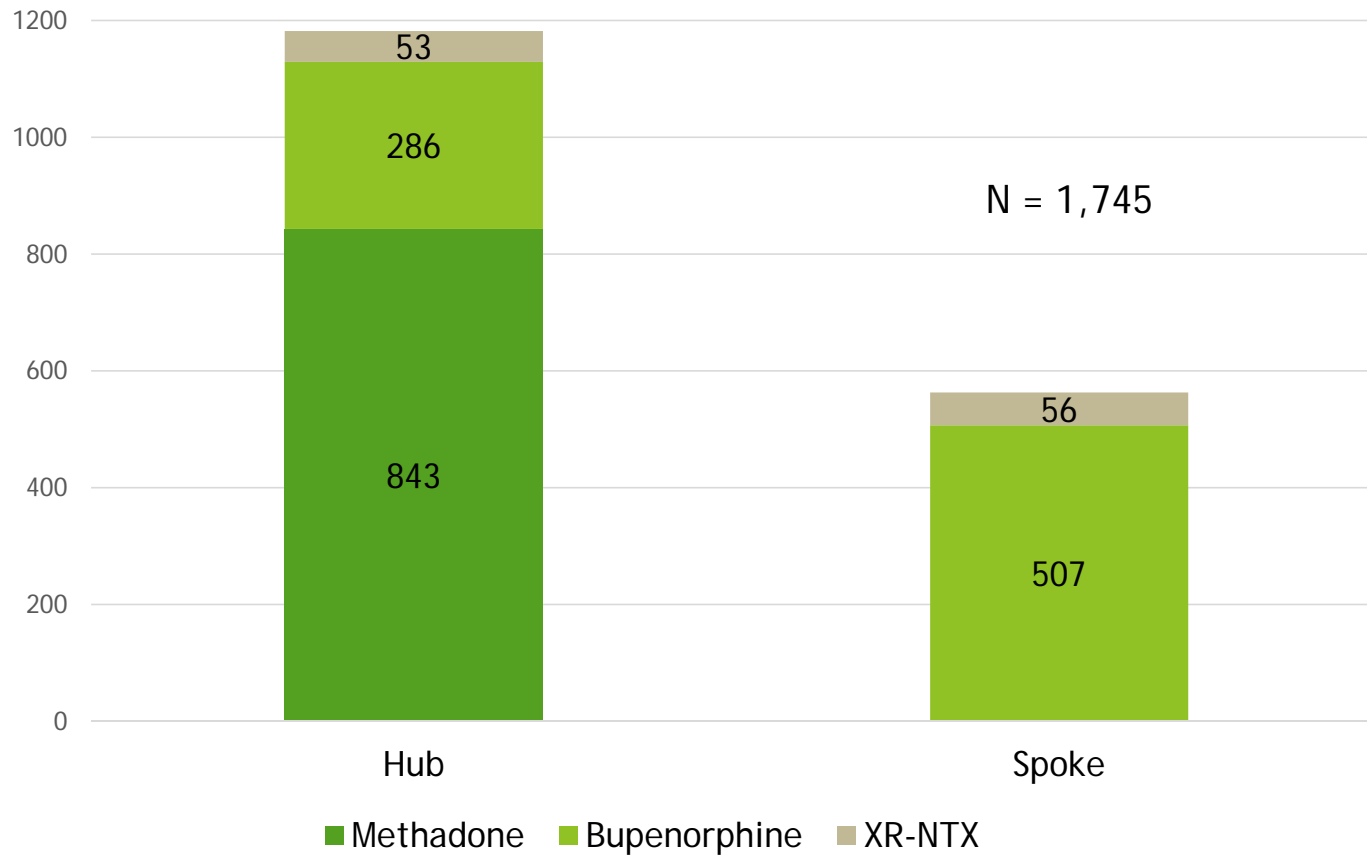
- ▶ Existing data
 - ▶ California Opioid Dashboard (CDPH, OSHPD, DOJ)
 - ▶ CalOMS-Tx
 - ▶ Drug Medi-Cal, Medi-Cal Managed Care, Pharmacy Claims
- ▶ New data collection
 - ▶ Patient numbers
 - ▶ H&S Provider Surveys & Interviews
 - ▶ H&S Patient Interviews

Statewide New H&S Patients by Medication (Preliminary)*



*Preliminary data: based 12 of 19 systems completing all required monthly reports

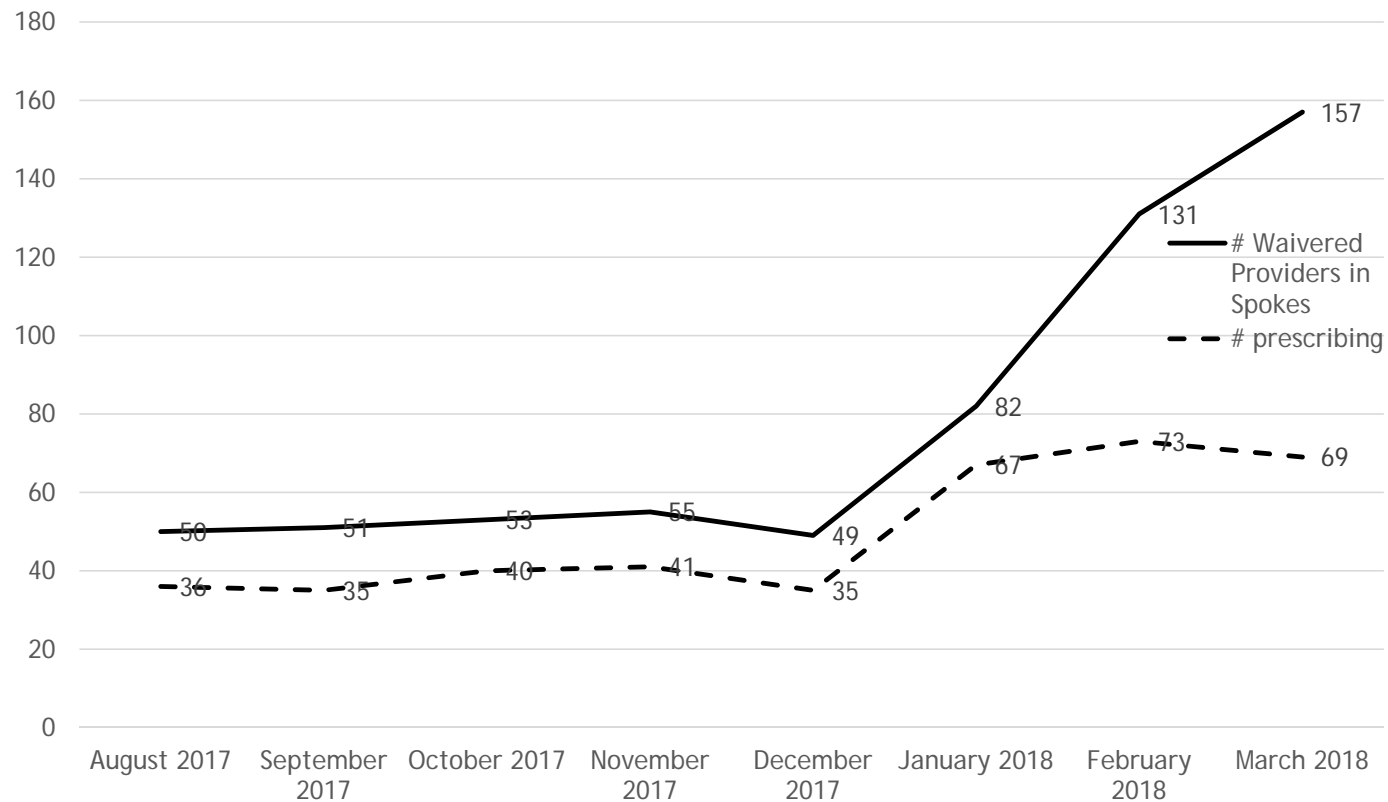
Hub and Spoke Patient Initiations by Medication



Current Waivered Providers in Spokes

- ▶ 199 waivered Spoke providers
- ▶ 47.2% actively prescribing (n = 94)
- ▶ Based on 84% completion of required March 2018 Spoke reports

waived docs and # actively prescribing in Spokes*† (Aug - Mar)



*Data based on 81 Spokes completing all required reports (of 110 total)

† May include providers who were already waived/prescribing, who were newly recruited into the Spokes



Spoke Development

Dara Yomjinda

Matrix Institute Hub and Spoke System

Spokes

Current Spokes	Potential Spokes
<ul style="list-style-type: none">▪ Venice Family Clinic	<ul style="list-style-type: none">• University Muslim Medical Association (UMMA) Community Clinic
<ul style="list-style-type: none">▪ St. John's Well Child and Family Center	<ul style="list-style-type: none">▪ John Wesley Community Health (JWCH) Institute
<ul style="list-style-type: none">▪ CLARE Foundation	

Spoke Development Map



Efforts to Recruit Spokes

- ▶ Engaging Agencies and Representatives
 - ▶ Coalition meetings
 - ▶ OUD treatment community meetings
 - ▶ Networking
- ▶ Education on goals of project and incentives
- ▶ Offering support and guidance



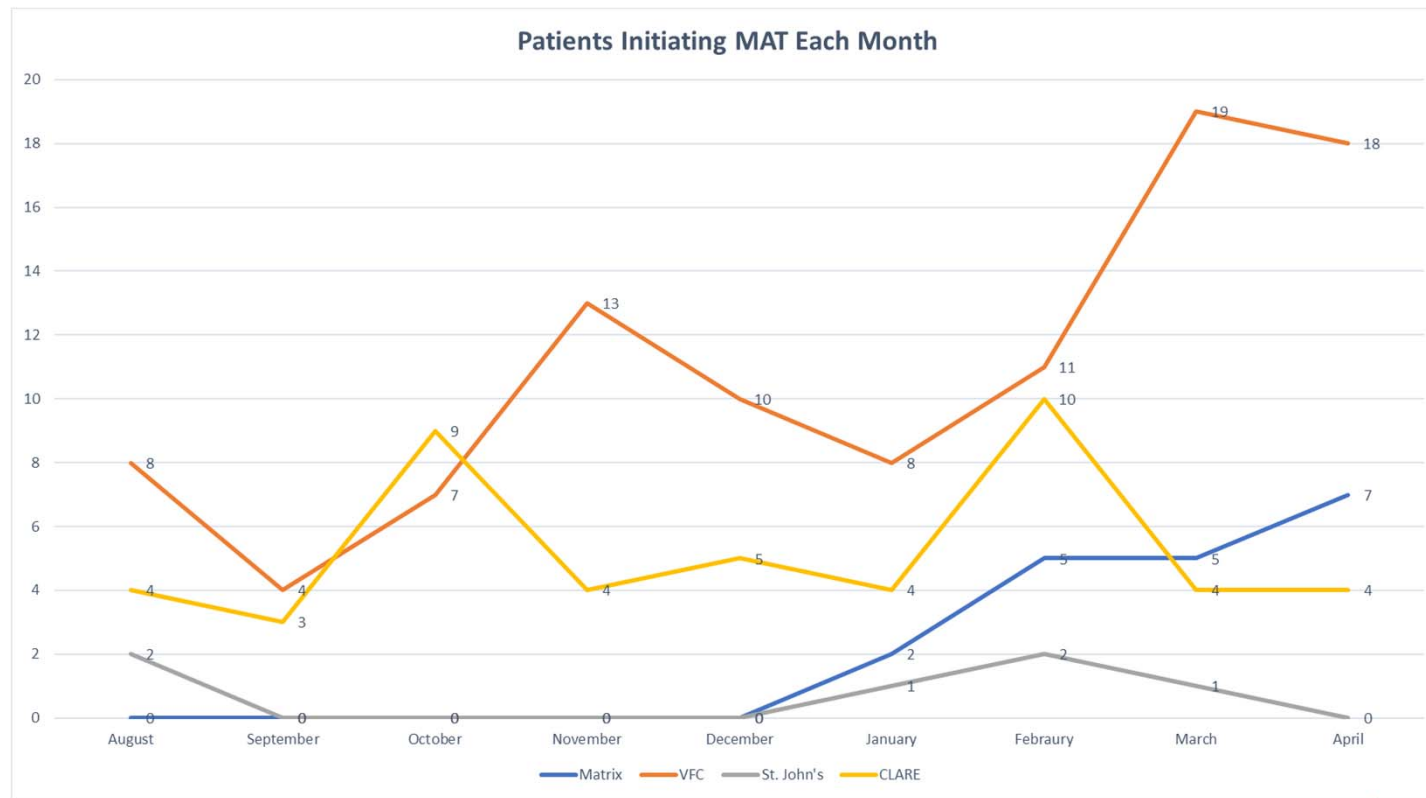
Efforts for Existing Spokes

- ▶ Identified MAT Champion
 - ▶ Primary care MD - experience in FQHC setting, working with inmates
 - ▶ Offer one-on-one mentoring to enhance confidence providing treatment
 - ▶ Understands nuances of working in primary care setting
- ▶ Tailored efforts to meet the needs of each particular spoke
- ▶ Inform spokes of educational and mentoring opportunities offered by UCLA, CSAM, and others

Successes

- ▶ 170 new patients treated
- ▶ 16 new X-Waivered Providers (Went from 22 to 38 total)
- ▶ Donated 504 units of Narcan Nasal Spray to LASD

Successes



Lessons Learned

- ▶ Importance of MAT Champion
 - ▶ Physicians enhance communications with other physicians
 - ▶ Understands nuances of primary healthcare settings (e.g. billing, EHR systems)
 - ▶ Can foster buy-in at provider and administrator levels

Challenges

- ▶ At the Hub:
 - ▶ Quick turnaround time
 - ▶ 2 year grant
 - ▶ Merger
 - ▶ Training and staff turnover
- ▶ At the Spokes:
 - ▶ Variations of buy-in
 - ▶ Logistical barriers: work flows, patient wait times

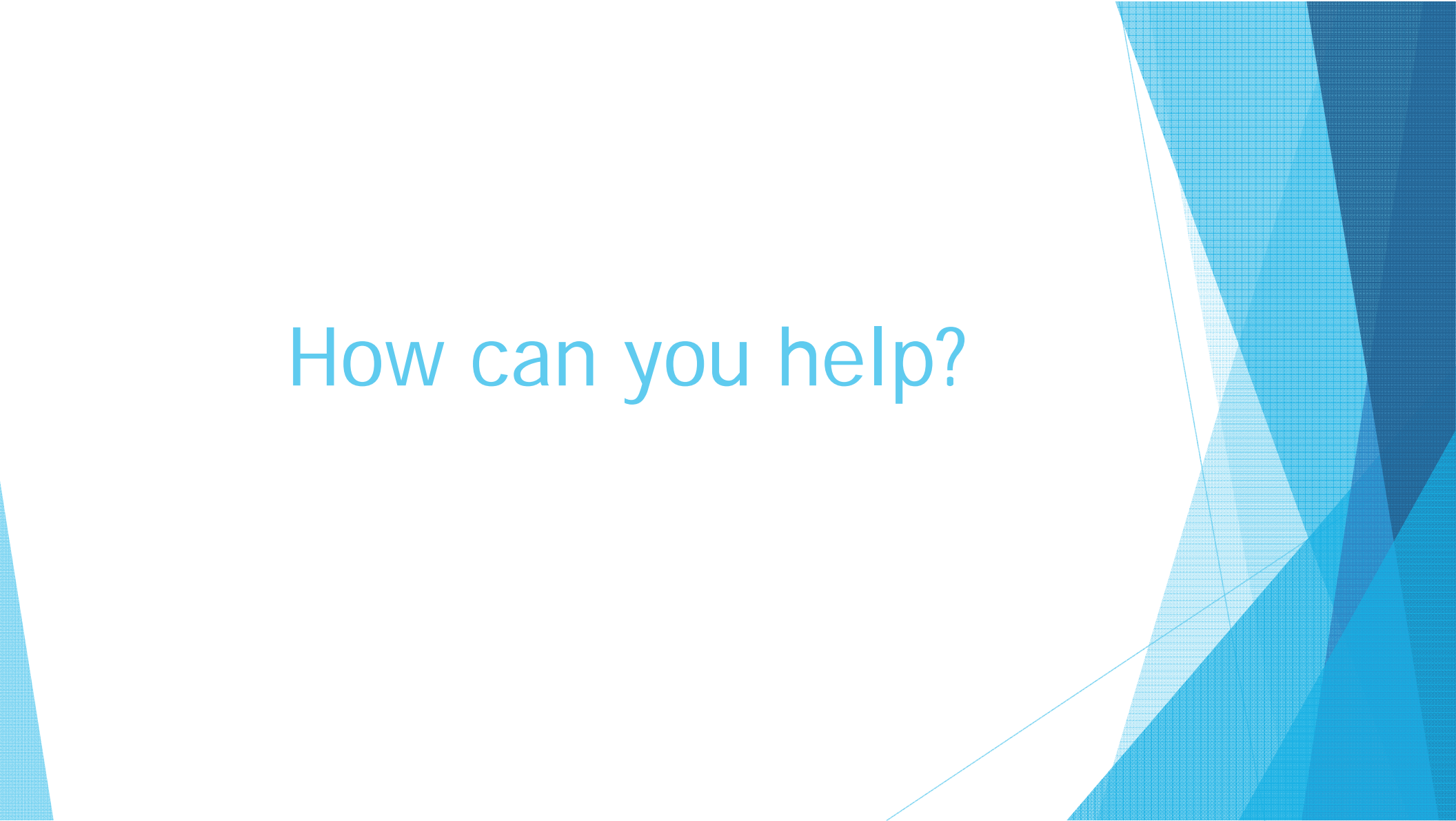
Challenges

- ▶ Stigma
 - ▶ Among medical providers
 - ▶ “Complicated” patient
 - ▶ Methadone vs. buprenorphine vs. naltrexone
 - ▶ Among addiction counselors
 - ▶ MAT in the context of abstinence-based treatment philosophy
 - ▶ Public perception
 - ▶ “They did this to themselves”
 - ▶ Effect on patients
 - ▶ Reluctance to disclose problem
 - ▶ E.g. client on probation fears admitting problem with opioids will lead to probation violation and re-incarceration
 - ▶ Reluctance to seek treatment
 - ▶ Influence on length of time in treatment or on medication
 - ▶ Detox vs. maintenance

Future Plans

- ▶ Increase marketing efforts to providers, consumers, community members
- ▶ Develop referral system with ED to link individuals treated in ER to community resource to continue care
- ▶ Continue developing partnerships with other local agencies to promote use of MAT and improve accessibility for clients
- ▶ Continue to provide education on and advocacy for MAT to stakeholders

How can you help?



Thank you!



Hub & Spoke System

Dr. Jose C. Salazar



The Opioid Epidemic

- The current opioid epidemic is the worst drug crisis in American history. More than 42,000 people nationally died of an opioid overdose in 2016, including nearly 2,000 people in California, according to the National Center for Health Statistics.
- On April 21, 2017, the US Department of Health and Human Services announced \$485 million in 21st Century Cures Act-authorized funding for 50 states, the District of Columbia, and four territories to address opioid abuse.
- The amount allocated to California is \$44,749,771 for the first year of the State Targeted Response (STR) to the Opioid Crisis Grant program administered by the Substance Abuse and Mental Health Services Administration (SAMHSA).
- The project design is an adaptation of the successful Hub and Spoke model implemented in Vermont.
- The CA Hub & Spoke System (CA H&SS) is a component of the California MAT Expansion project and is being implemented as a way to expand and increase access to MAT services throughout the state.



H&SS Description

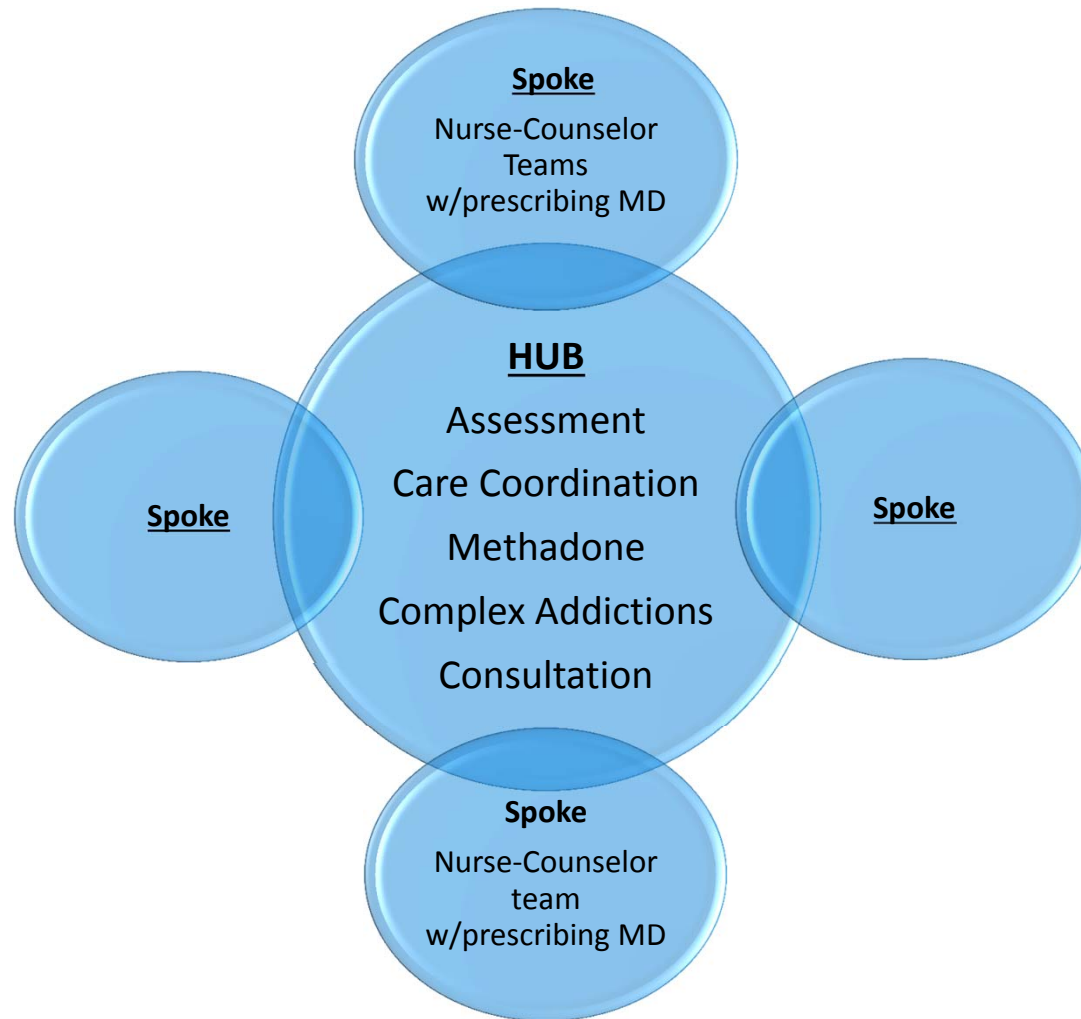
- There are 19 Hubs located throughout California. A Hub has to have an Opioid Treatment Program that dispenses methadone.
- In addition to providing MAT services to patients in their clinic, the Hubs can also provide an array of services varying from transportation, harm reduction supplies, and counseling.
- Each Hub is connected to a number of Spokes, which is any office or clinic with a buprenorphine prescriber.



What is a Spoke?

- Spokes may consist of:
 - A FQHC who prescribes and/or administers buprenorphine
 - One or more federally waived prescribers and a MAT team consisting of a licensed health practitioner and/or licensed behavioral health professional to perform duties that do not require a prescribing license
- Spokes provide ongoing care for patients with milder disorders, managing both induction and maintenance, and have access to a dedicated MAT team.






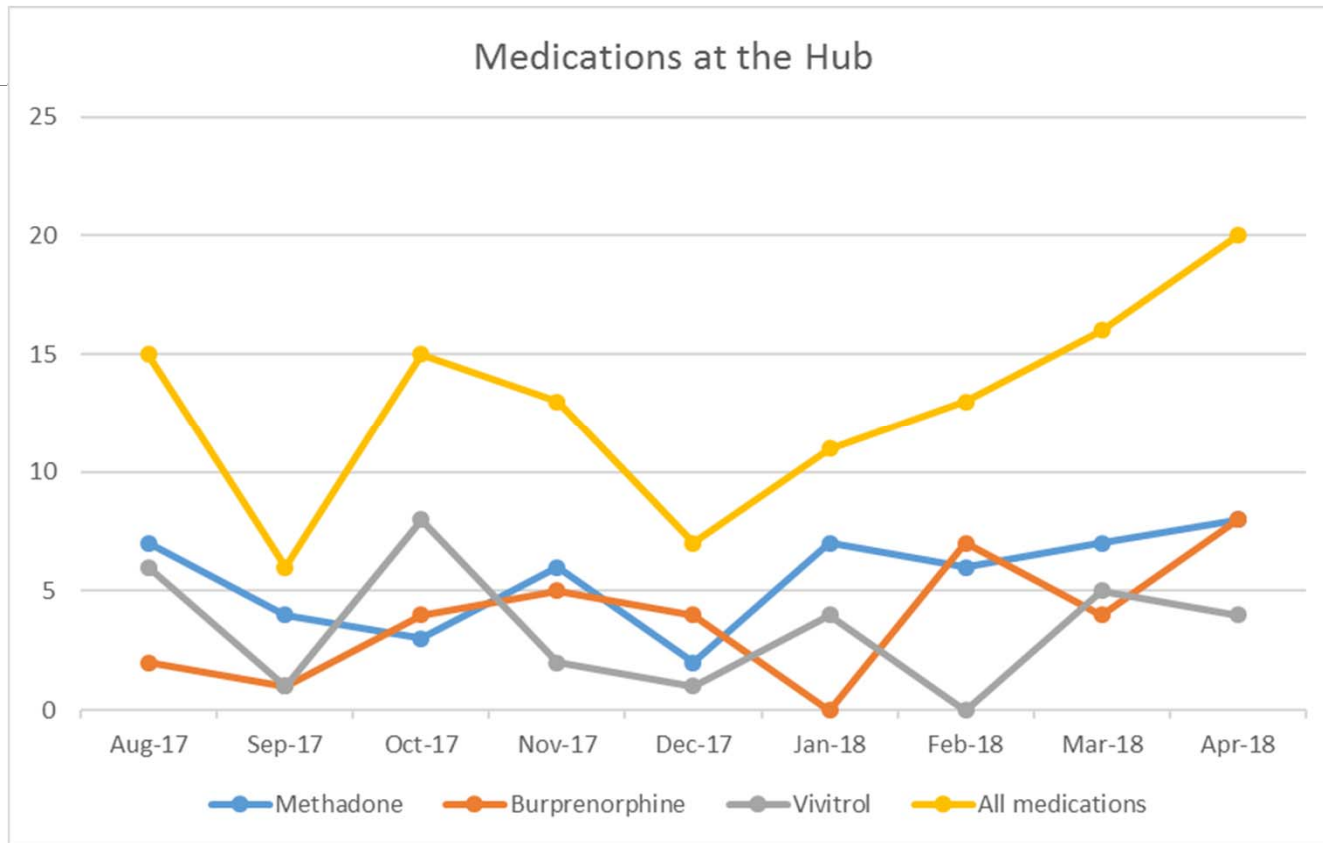
TTC Hub Team

- Dr. Jose C. Salazar, Project Director
- Dr. Jim Sorg, Director of Care Integration and Information Technology
- Dr. Stan Galperson, Director of NTP/OTP
- Dr. Clarita Lantican, Hub Data & Evaluation Supervisor
- Dennis Whitmyer, Hub & Spoke Project Coordinator
- Alejandra Shakhmelikyan, Hub & Spoke Administrative Assistant
- Allison Gillespie, MAT Supervisor
- Christine Erinakis, Hub & Spoke Data Evaluator
- Nyabingi Kuti, Hub & Spoke Training Manager

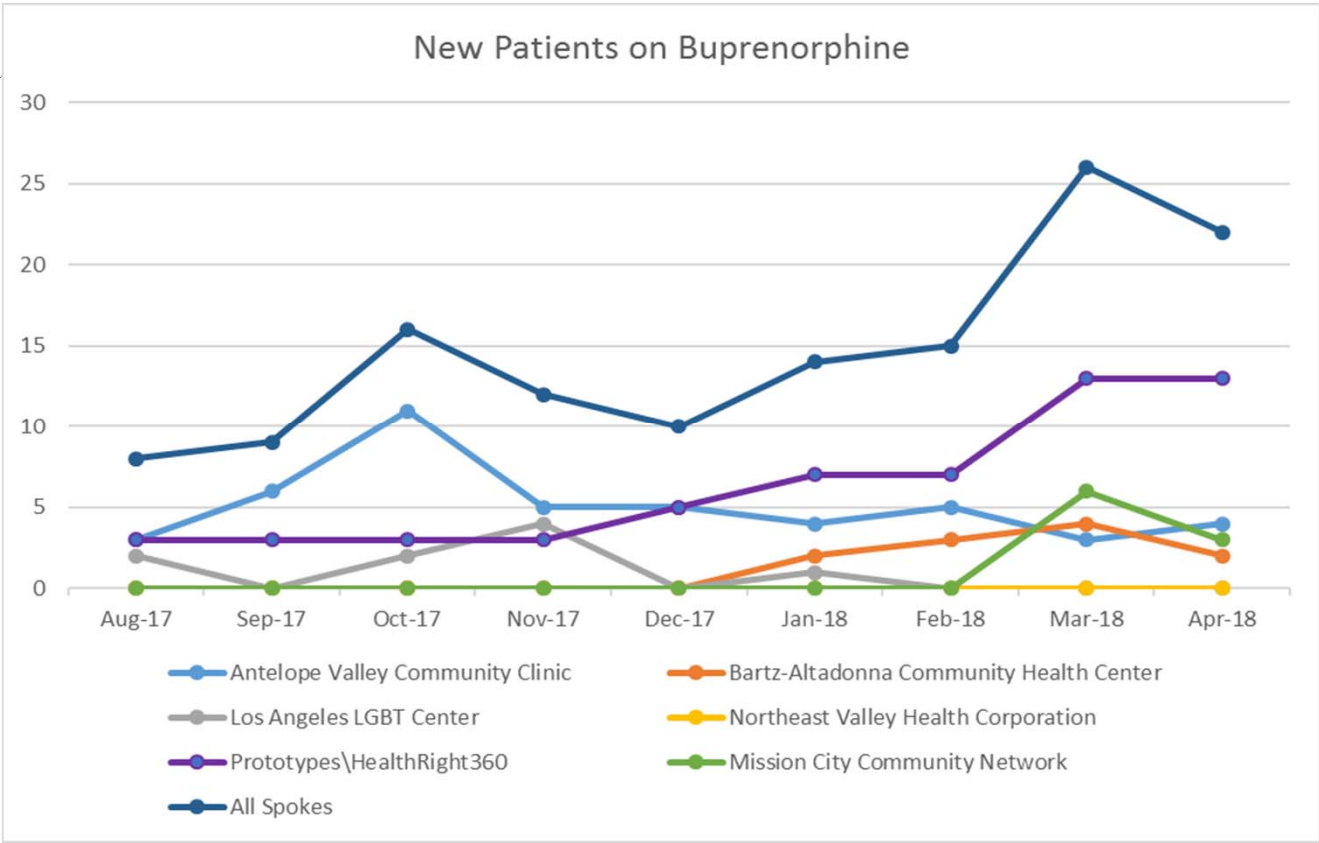
TTC Spoke Partners

- Antelope Valley Community Clinic (Lancaster)
 - Bartz-Altadonna Community Health Center (Lancaster)
 - Los Angeles LGBT Center (Los Angeles)
 - Northeast Valley Health Corporation (San Fernando & Van Nuys)
 - Prototypes/HealthRIGHT 360 (Pasadena & Pomona)
 - Mission City Community Network (North Hills, Northridge, Mission Hills, Panorama)
 - L.A. CADA (Los Angeles Centers for Alcohol and Drug Abuse (Santa Fe Springs)
 - Tarzana Treatment Centers, Inc. (Long Beach, Palmdale, Lancaster, Reseda, and Northridge)
- 

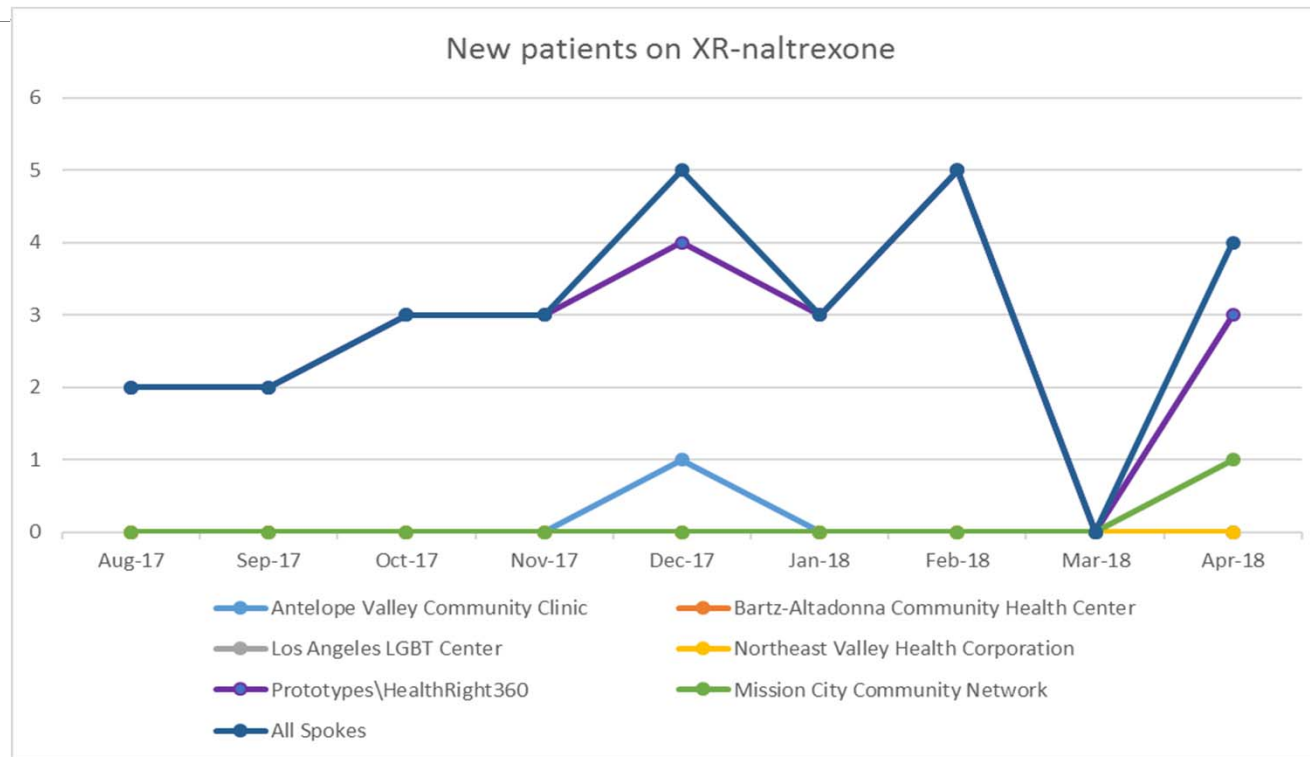
Medications (Hub)



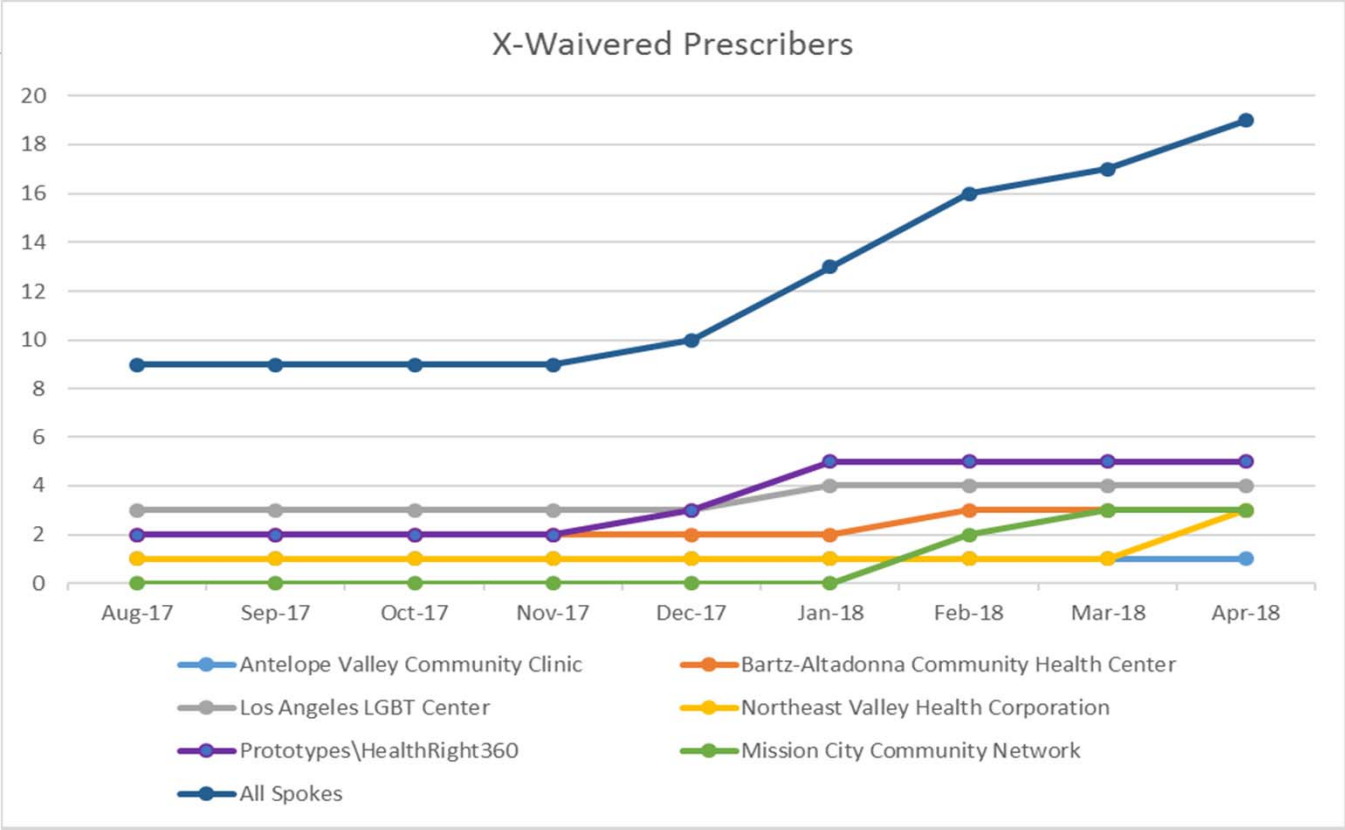
Buprenorphine (Spokes)



XR-naltrexone (Spokes)



X-Waivered Physicians (Spokes)



CA H&SS Implementation

- The implementation of the CA H&SS will increase the total number of physicians, physician assistants and nurse practitioners prescribing buprenorphine, thereby increasing the availability of MAT for patients with OUDs.
- All Hub and Spokes must obtain or be currently enrolled in Drug Medi-Cal or Fee-for-Service Medi-Cal, as well as remain in good standing throughout the contract period.
- Hub and Spoke services can help save multiple lives and reduce the harm associated with on-going opiate use.

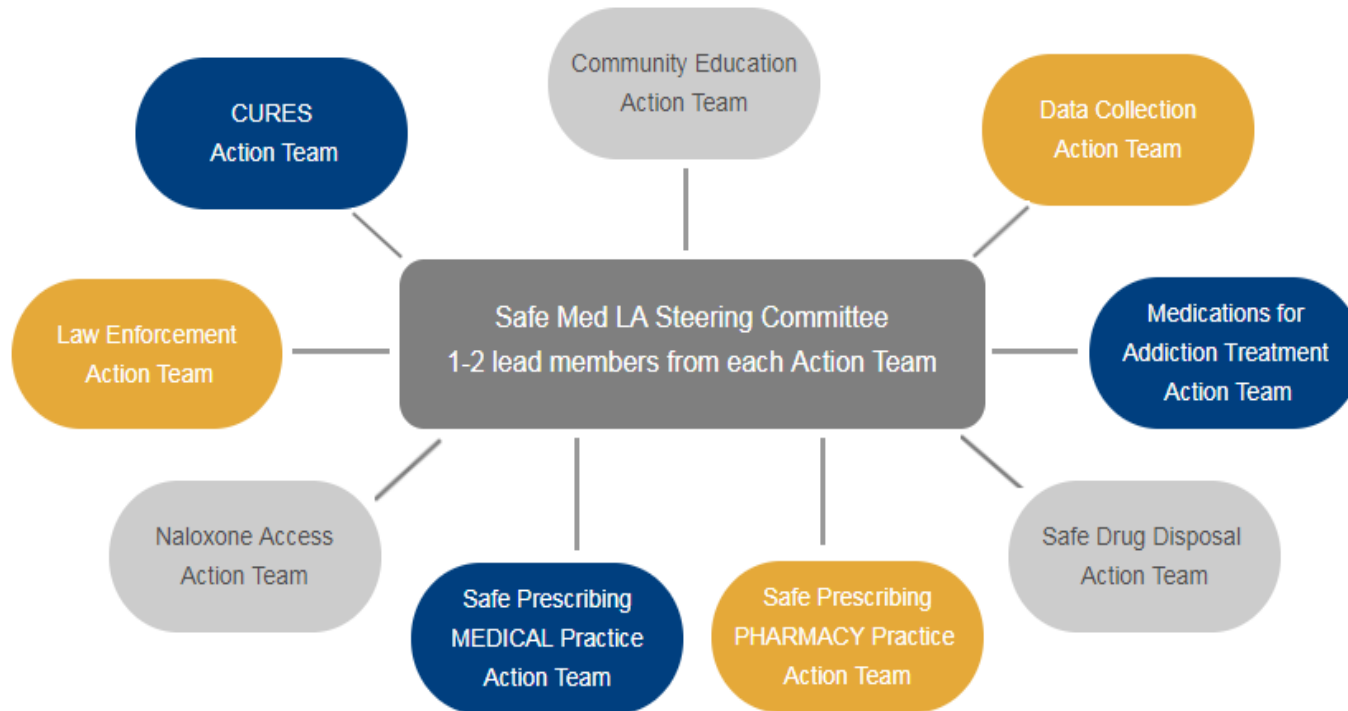


CA Hub & Spoke Service

CA Hub and Spoke Service	Required
Collection & Tracking of Key Performance Measures	X
Use of the Office-Based Opioid Treatment (OBOT) Stability Index for Buprenorphine Patients	X
Recovery and Peer Support Services	X
Participation in the Statewide Learning Collaborative	X
Collaboration with Local Opioid Coalitions	X
Participation in DHCS CA H&SS Steering Committee	X
Provision of Naloxone	X
Providing for or Referring to Local Maternal Addiction Treatment	X
Sustainability Plan	X



Action Teams



Focused Activities

Help jail systems increase access to MAT services to patients prior and post release.

Increase access to Naloxone by providing for free to health service providers, syringe exchange programs (SEPs) and law enforcement, including first responders.

Provide access to Fentanyl Testing kits so patients still using opiates can test their substances.

Support public policy to increase access to SEP services and safe injection sites and/or other harm reduction community initiatives.

Work collaboratively with local partners to launch and hold various education and public policy forums in the community.

Establish local community chapters of consumer collaboratives (active and none active drug users) and other stakeholders to help inform local/state public policy

If you are interested in learning more
about TTC's Hub and Spoke program
e-mail comments or questions:

HubSpokeLA@tarzanatc.org

