

# TRAINING

## Policy Priorities and Legislative Docket Development Process

October 2, 2024



# Learning Objectives

- Learn about the functions of the Public Policy Committee (PPC) and how the Commission on HIV (COH) develops its policy priorities and legislative docket documents.
- Learn about the Board of Supervisors (BOS) guidance for County Commissions on taking positions on legislative bills.

# What is policy?

- **Public Policy and Policy:** laws, regulations, and executive orders at different levels of government in the United States developed to solve or address relevant and real-world problems.
- **Public Health Policy:** laws, regulations, actions, and decisions implemented within society to promote wellness and ensure that specific goals are met.



For three decades, HRSA's Ryan White HIV/AIDS Program has made an impact on the lives of more than half a million people with HIV each year.

#RWHAP #30YearsofCARE



# Examples of Public Health Policies

# Examples of Commission on HIV (COH) Policy Accomplishments

---

- HIV Names-based reporting
- CD4 Reporting
- Ryan White HIV/AIDS Program (RWHAP) reauthorizations
- Affordable Care Act (ACA)/1115 Waiver
- Local funding for STD response
- Medical Care Coordination (MCC) expansion
- Continued advocacy for Syringe Exchange Programs (SSPs), housing, health equity, and civil rights
- Facilitated community meetings and panels on HIV/STD control in the adult film industry



This Photo by Unknown Author is licensed under [CC BY-ND](#)

# Public Policy Committee (PPC)



Role and Responsibilities

# Resources

- Since some Public Policy Committee (PPC) activities may be construed as outside the purview of the Ryan White Part A or CDC planning bodies, resources other than federal funds cover staff costs or other expenses used to carry out PPC activities.

## Public Policy Committee Responsibilities

- A. Advocating public policy issues at every level of government that impact Commission efforts to implement a continuum of HIV services or a service delivery system for Los Angeles County, consistent with the comprehensive HIV plan;
- B. Initiating policy initiatives that advance HIV care, treatment and prevention services and related interests;
- C. Providing education and access to public policy arenas for the Commission members, consumers, providers, and the public;




## Public Policy Committee Responsibilities

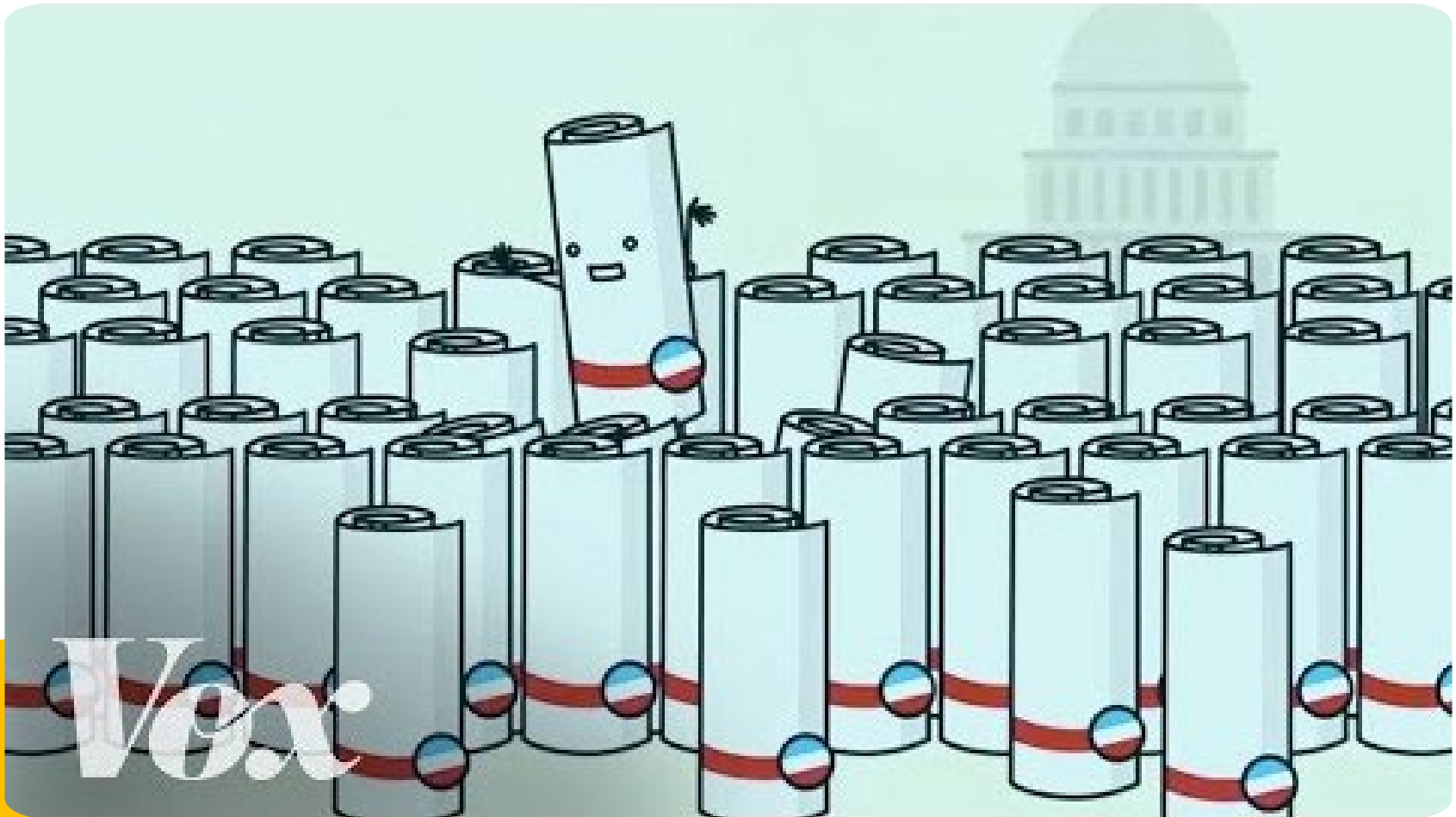
- D. Facilitating communication between government and legislative officials and the Commission;
- E. Recommending policy positions on governmental, administrative, and legislative action to the Commission, the BOS, other County departments, and other stakeholder constituencies, as appropriate;
- F. Advocating specific public policy matters to the BOS, County departments, interests and bodies, and other stakeholder constituencies, as appropriate;



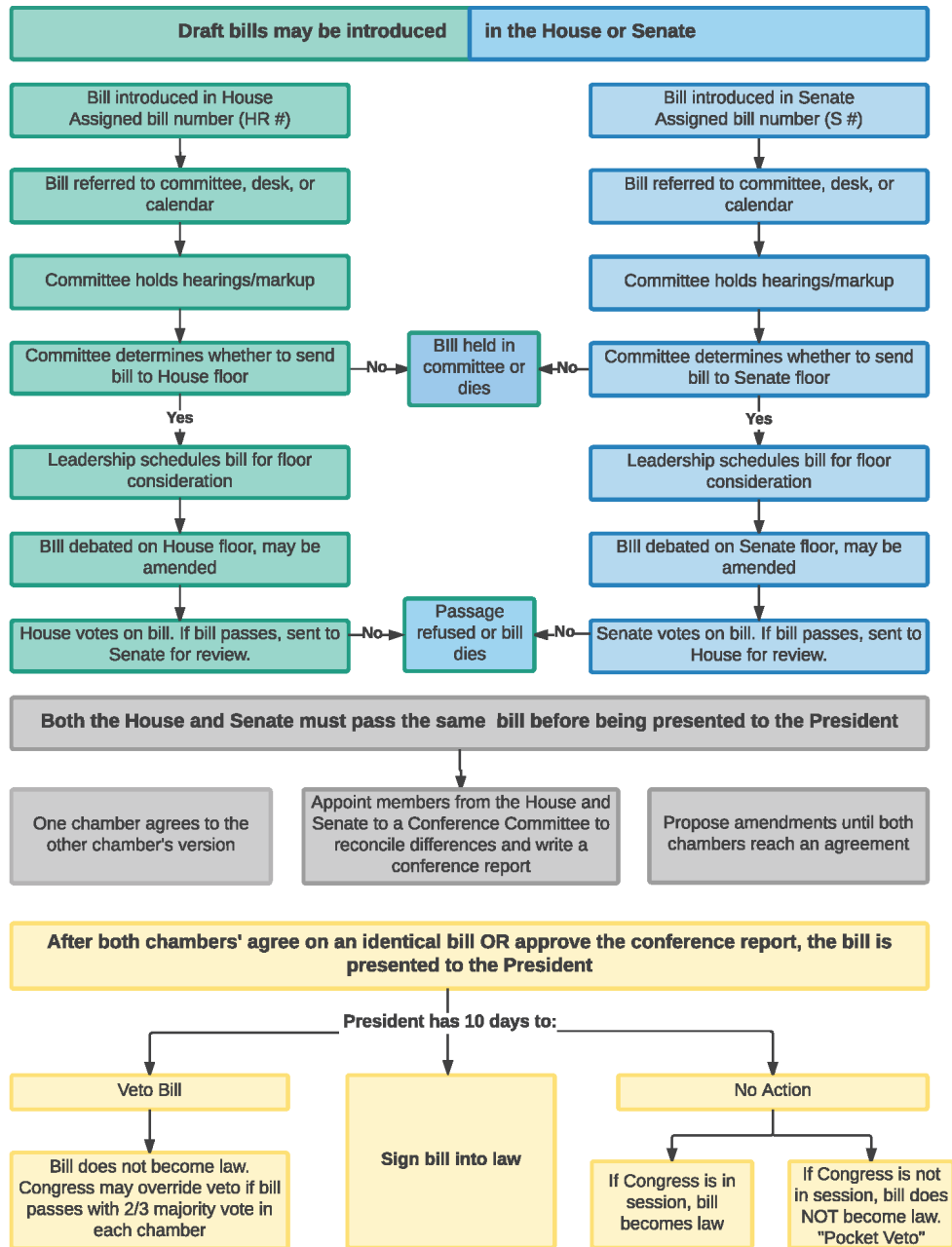
## Public Policy Committee Responsibilities

- G. Researching and implementing public policy activities in accordance with the County's adopted legislative agendas;
  - H. Advancing specific Commission initiatives related to its work into the public policy arena; and
  - I. Carrying out other duties and responsibilities as assigned by the Commission or the BOS.
- 

# How a Bill *really* becomes a Law: What Schoolhouse Rock missed

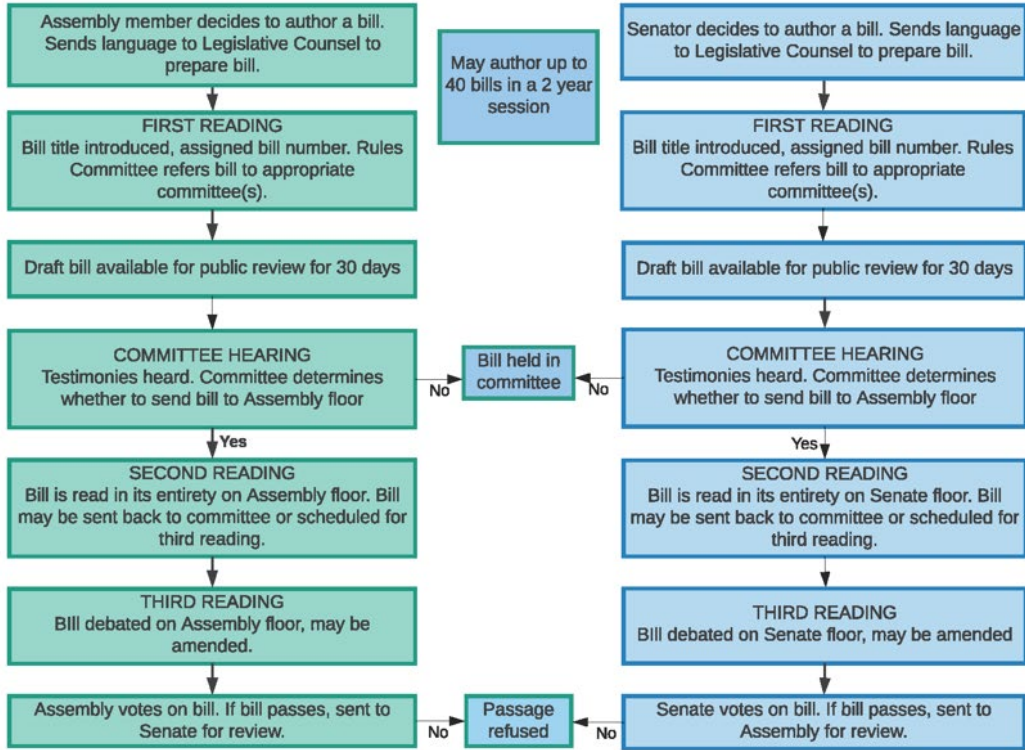


# FEDERAL LEGISLATION: How a Bill becomes a Law

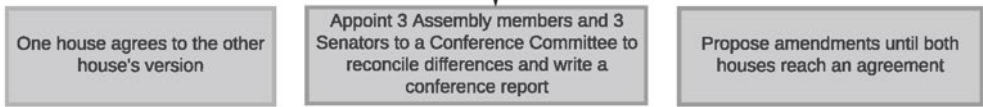


# CALIFORNIA STATE LEGISLATION: How a Bill becomes a Law

## Suggestions for legislation proposed by agencies, citizens, governor, lobbyists, etc.



## Both the Assembly and Senate must pass the same bill before being presented to the Governor



## After both houses agree on an identical bill OR approve the conference report, the bill is presented to the Governor



# **Board of Supervisors Guidance for Commissions: Taking Positions on Legislative Bills**

---

# LOS ANGELES COUNTY BOARD OF SUPERVISORS



Hilda L. Solis  
1<sup>st</sup> District



Holly J. Mitchell  
2<sup>nd</sup> District



Lindsey P. Horvath  
3<sup>rd</sup> District



Janice Hanh, Chair  
4<sup>th</sup> District

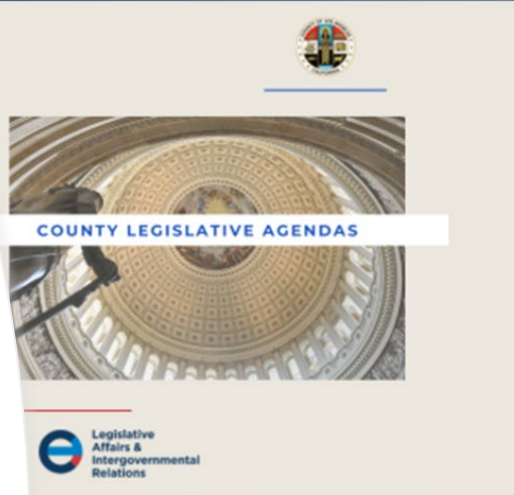


Kathryn Barger  
5<sup>th</sup> District

**REMINDER:** Only the Board of Supervisors set policy for the County. County commissions and other advisory bodies may make recommendations which are subject to review and approval by the CEO's Legislative Affairs Office.

# BOS Legislative Agendas

- Visit: <https://ceo.lacounty.gov/legislative-affairs-and-intergovernmental-relations/>



The County's State and Federal Agendas contain information that serve as the basis for the development and implementation of legislative, administrative, and budget issues.

- 📄 State Legislative Agenda
- 📄 Federal Legislative Agenda

📄 Board Legislative Policies

- 📄 2023 State Legislative Priorities
- 📄 2023 Federal Legislative Priorities
- 📄 2023 County-Sponsored and Co-sponsored Projects
- 📄 Summary of 2022 County State Advocacy Efforts
- 📄 Summary of 2022 County Washington D.C. Advocacy

## Federal Legislation of Interest to the County of Los Angeles



The County's online bill tracking system provides information on Federal and State legislation that the County has tracked that is of interest to the County. The system allows users to view by individual bills and by larger categories.



### Los Angeles County Legislative Updates

Below are periodic overviews and updates on legislative and budgetary items of interest to the County.

- 📄 Los Angeles County Legislative Update - [Link]
- 📄 Los Angeles County Legislative Update - [Link]
- 📄 Los Angeles County Legislative Update - [Link]
- 📄 Los Angeles County Legislative Update - [Link]

Visit Board Reports



# How are the COH's Policy Priorities developed?



# Policy Priorities

Guide and focus the Committee's selection of policy issues to discuss and champion

Ensures that community needs are the focus of policy deliberations

Aligned with service priorities set by the Commission through the Priority Setting and Resource Allocations process

Broadly worded to allow for swift actions and response to rapidly changing political environment

# How is the COH's Legislative Docket Developed?

---

# Timeline

- Follows calendars for both legislative houses of the State of CA
- Planning with grassroots coalitions usually occurs in multi-year settings to ensure continuity of policy and advocacy efforts
- Track BOS deliberations and legislative agenda decisions
- Bills are tracked via:  
<https://leginfo.legislature.ca.gov/>
- Committee begins to track bills introduced and lists potential bills for consideration by Committee (Jan-Feb)

# Timeline

- CA budget tracked thru May revise
- Federal and State bills for Committee deliberations may come from Committee members, community, and other stakeholders
- Caucuses and Committees also provide input and highlight policy issues for PPC to discuss

## Deliberation Process

- Committee members review bills and other policy issues
- Assess pros and cons
- Invite speakers to help inform discussion
- Request more information from authors
- Use Policy Priorities document to guide deliberations
- Legislative Docket and Policy Priorities sent to COH for approval
- Both documents sent to CEO Legislative Affairs Office

**Q & A**



**CONNECT**  
COMMUNITIES TO RESOURCES

<https://hivconnect.org/>



510 S. Vermont Ave, 14th Floor,  
Los Angeles, CA 90020



[hivcomm@lachiv.org](mailto:hivcomm@lachiv.org)



213.738.2816



HIVCommissionLA



@HIVCommissionLA



LOS ANGELES COUNTY  
**COMMISSION ON HIV**

