

Los Angeles County Probation Department

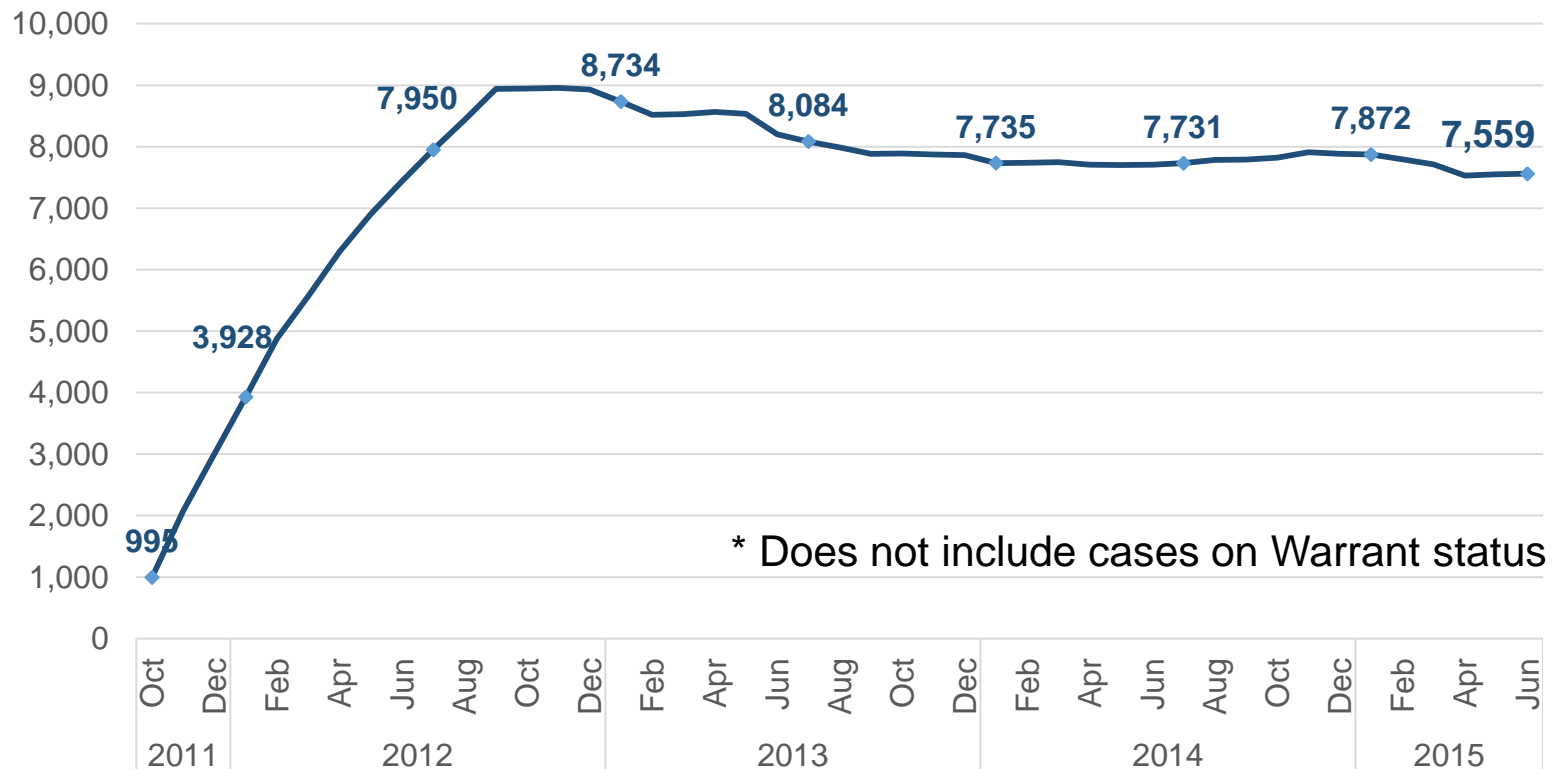
AB 109 Quarterly Report – October 6, 2015

Jerry E. Powers, Chief Probation Officer



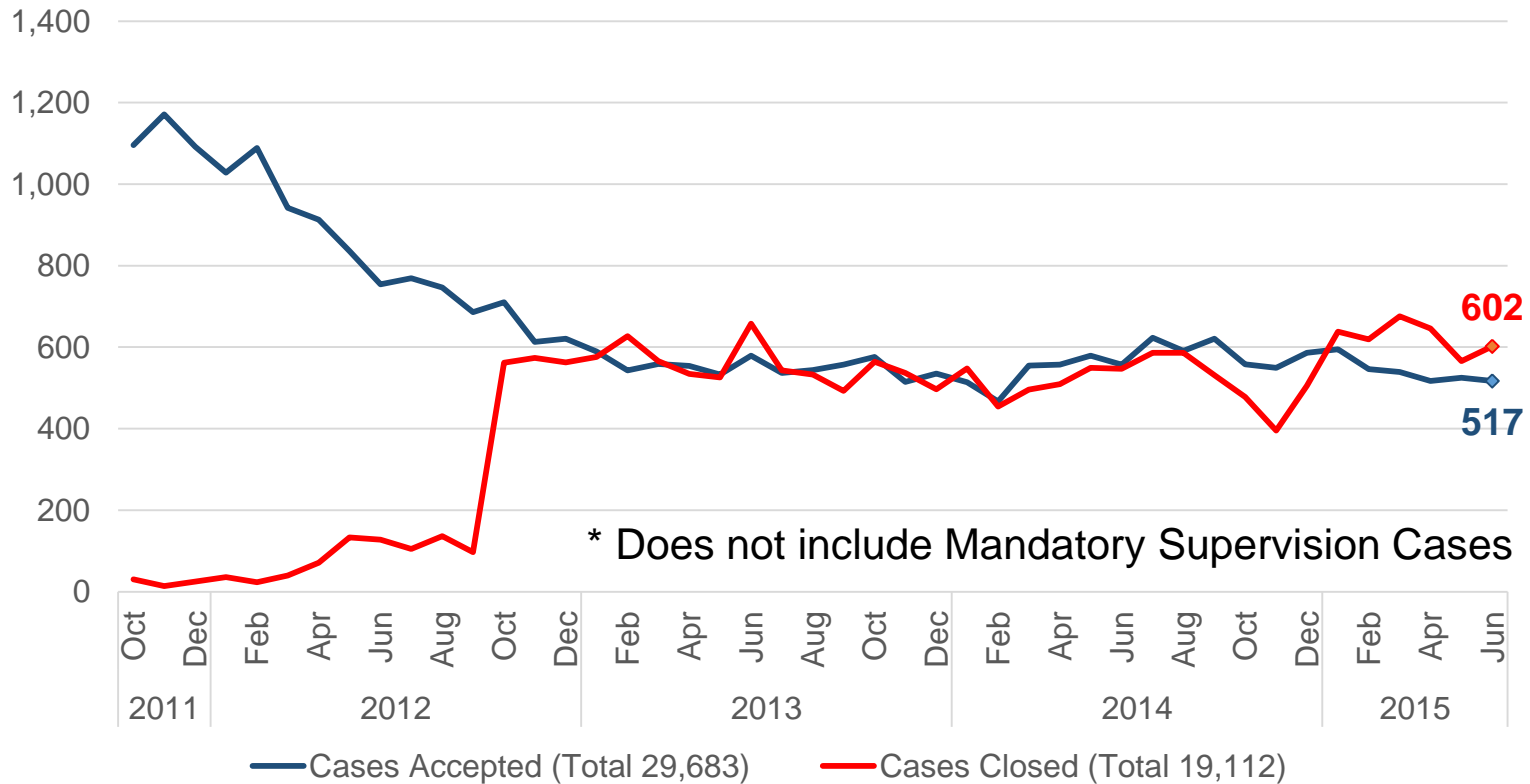


Active Cases - PRCs, Prop 36, & Splits October 2011 through June 30, 2015





PRCS* Cases Accepted vs Closed October 2011 through June 30, 2015





AB 109 Population

October 2011 through June 30, 2015

Action	Population			
	PRCS	Prop 36 ³	N3 Splits ⁴	Grand Total
Total Cases Accepted	29,446	237	1,546	31,229
Total Cases Closed	18,980	142	583	19,705
Serving Custody Portion		0	497	497
Outstanding Warrants ¹	2,000	17	71	2,088
Deported ²	1,376	4	0	1,380
Active Cases	7,090	74	395	7,559

¹ Does not include Warrants issued for deported clients.

² PRCS case accepted in LA County; client deported.

³ Not to be confused with Prop 36 of 2000 for low level drug offenses. Prop 36 of 2012 authorizes resentencing for offenders currently serving life sentences for 3rd Strike convictions

⁴ N3 Split cases may have multiple concurrent cases

All data in the table above was compiled using Probation Systems



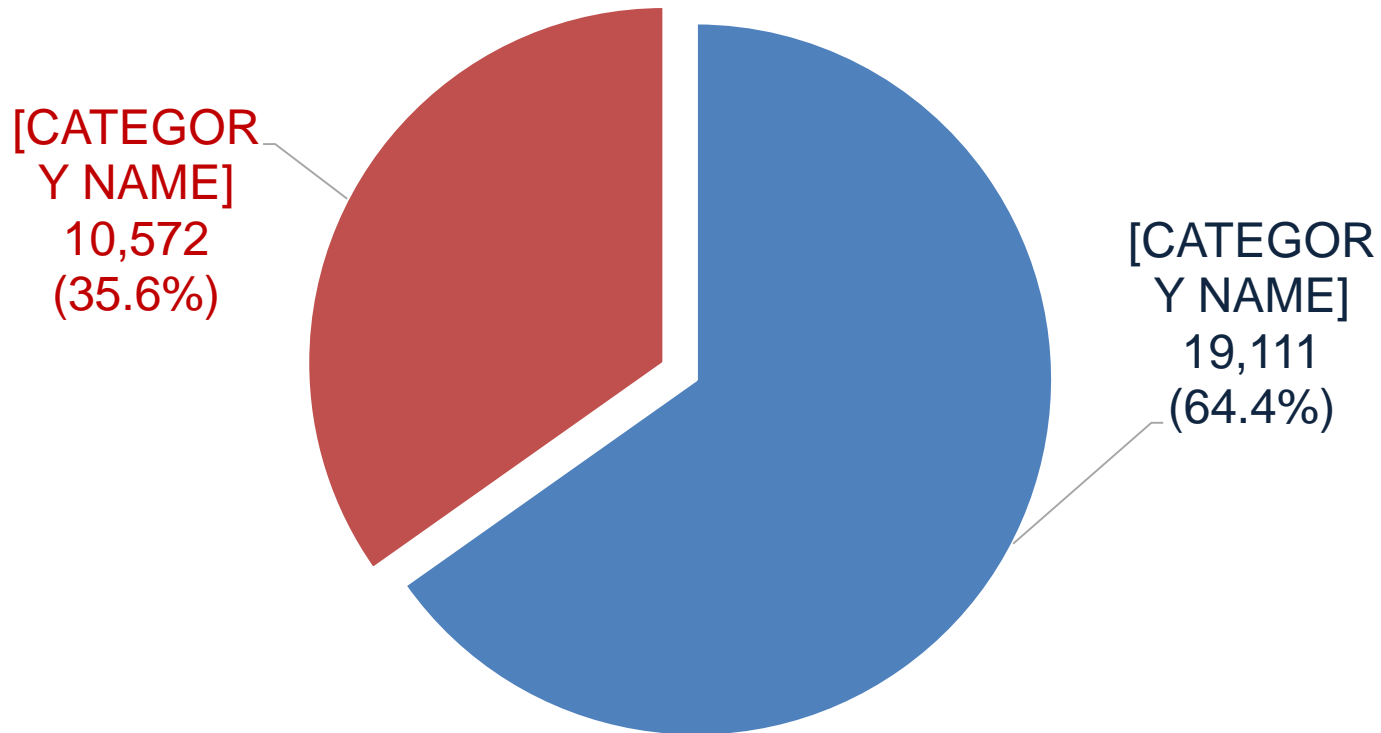
PRCS Terminations

Since Program Inception through June 30, 2015

Type of Termination	Total
Successful Termination	11,497
Termination Due to a New Criminal Conviction	4,727
Other Terminations (transfers, fatalities, etc.)	2,010
Prop 47 – Reduced and Terminated From Supervision	888
Total Terminations	19,122



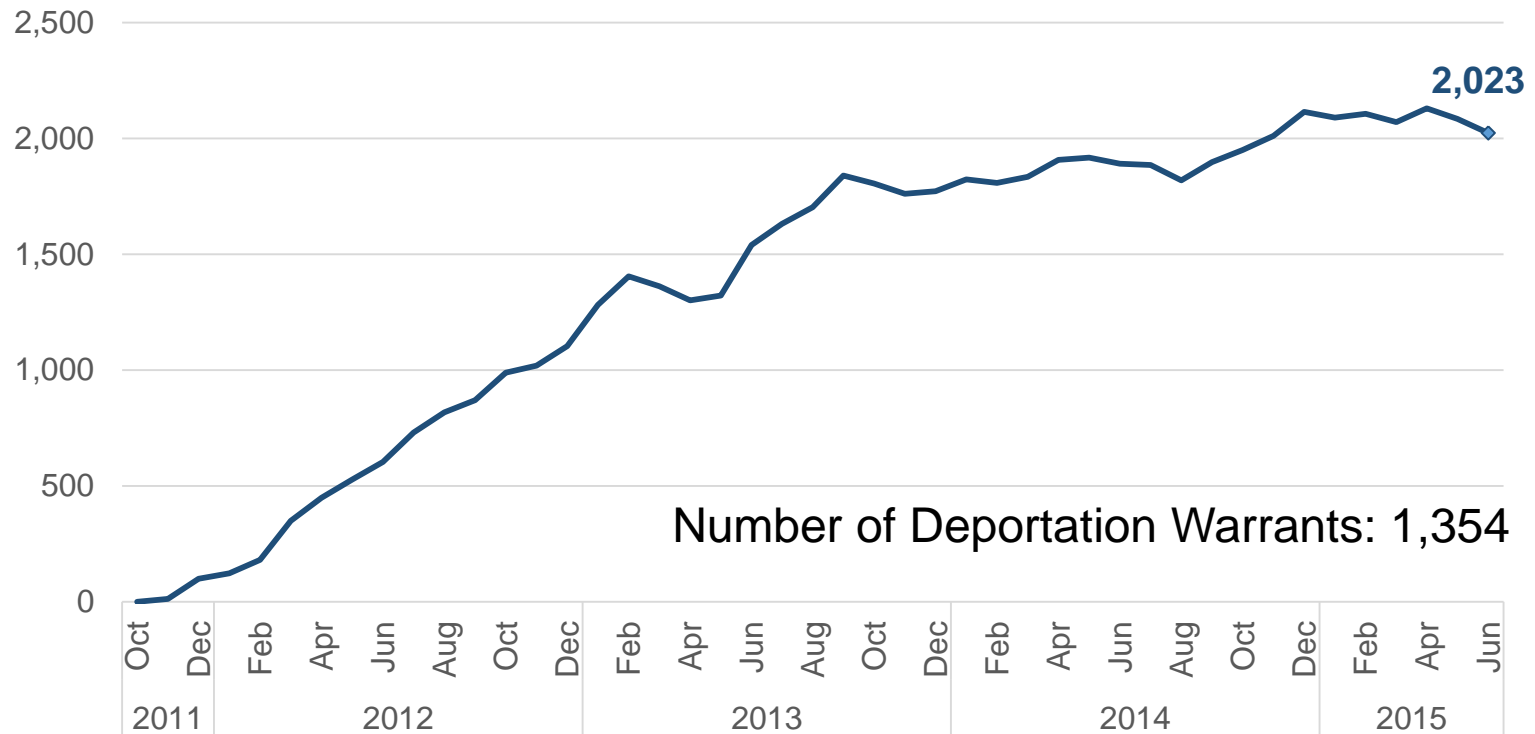
Arrests



29,683 total PRCS cases accepted as of June 30, 2015 (excludes split sentences); of which 10,572 (35.6%) have at least one arrest for misdemeanor or felony (This does not include incarcerations for Flash or technical violations).



Active PRCS & Prop 36 Warrants at End of Month Excludes Deportation Warrants





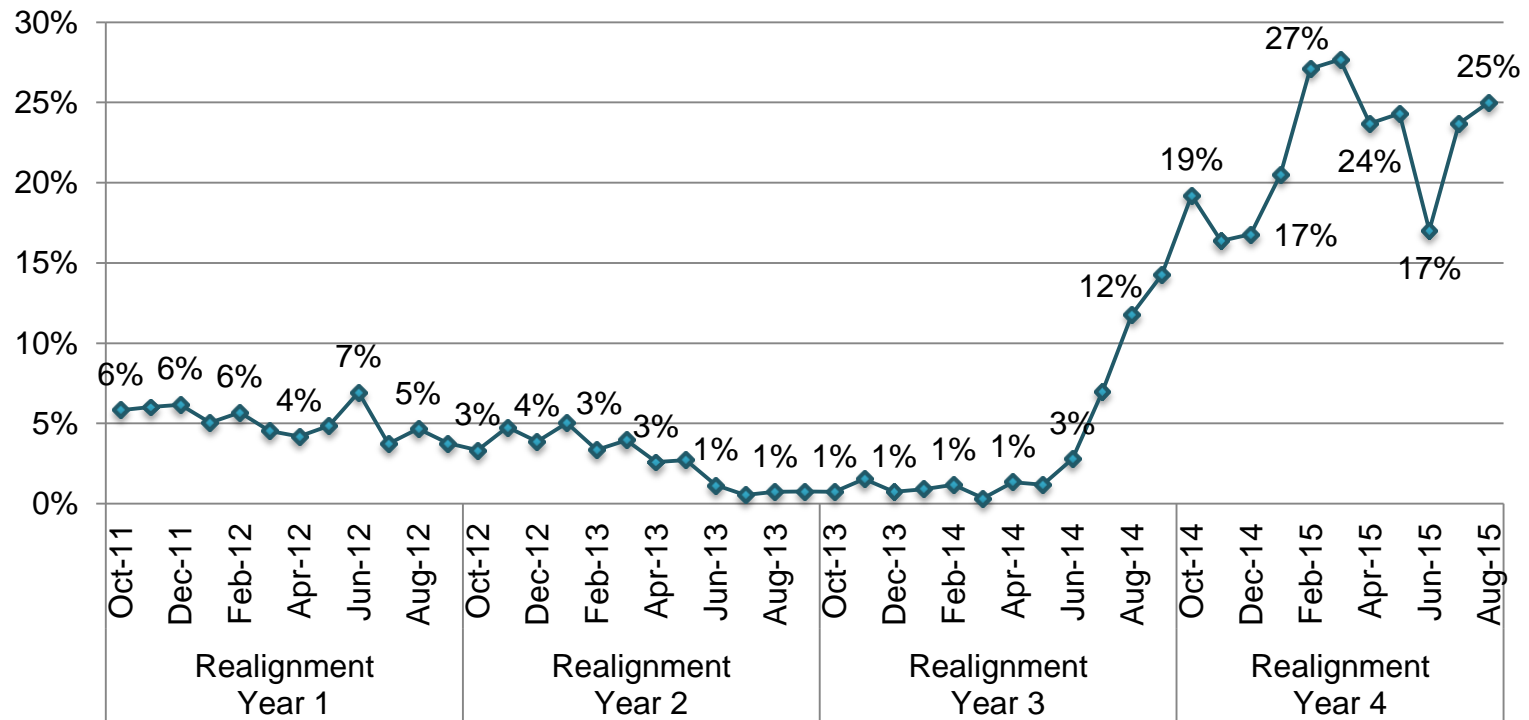
Proposition 47

The Probation Department is experiencing a decrease in the number of AB 109 cases due to Proposition 47:

Proposition 47 Dispositions on June 30, 2015	Count
Reduced and Terminated prior to release from CDCR	283
Reduced and Terminated from Supervision	888
Total AB 109 Prop 47 Reduction and Terminated	1,171



Split Sentences as a Percentage of 1170(h) Sentences



*DA issues split sentence policy directive in June 2014



Working Towards Successful Re-entry

- Screening of all inmates referred to Los Angeles County for PRCS.
- Assess all PSPs for to determine risk level and determine appropriate level of supervision and services needed for successful re-entry.
- Development of specialized caseloads.
- Development and implementation of a comprehensive case plan to address risk and needs identified at intake or during the course of supervision.
- Referrals to appropriate services to address risk factors and responsivity issues.



Working Towards Successful Re-entry

- Training and implementation of Evidence-based Practices:
 - Motivational Interviewing.
 - Training on administration of validated risk assessment.
 - Implementation of Case Plan based on risk assessment.
 - Graduated sanctions to address non-compliance.



Proposed Performance Measures 2015/2016:

- HUB/CRRC Performance Measure: 80% of PSPs/ N3 Splits in LASD custody will be oriented/assessed by Probation staff housed at the County jail staff within 60 days of their anticipated release date.
- In addition to the completion of Level of Service/Case Management Inventory (LS/CMI) conducted at the HUBs, Supervision DPOs will begin to assess clients under supervision.
- Increase number of comprehensive case management plans completed by Supervision DPOs from approximately 290 to 450 per month.



Proposed Performance Measures 2015/2016:

- Pilot program to provide Cognitive Behavior Treatment (CBT) to PSPs/N3 Splits in the Antelope Valley and South Los Angeles Regional Operations.
- Local Law Enforcement Performance
Measure: Reduce number of PSPs/N3 Splits on warrant status through follow-up by Supervision DPOs and the use of armed personnel to apprehend absconders.



Employment Contract Modifications Update:

- Modifications to employment services contract identified.
 - Completed draft of modified contract with all changes.
 - In process of meeting with Contracts and Grants, Contract Monitoring, and HealthRIGHT360.
 - Anticipate delivery to Board by December 2015.



Employment Contract Modifications Update:

- Working with National Institute of Corrections to identify additional strategies for development of employment placement services.
- Offender Workforce Development Specialist (OWDS) Partnership Training.

County of Los Angeles Department of Mental Health



Year To Date:

- DMH served 9,557 unique AB 109 clients in all levels of mental health care including outpatient services, IMD Step-Down, IMD, State Hospital, and acute inpatient psychiatric units during Fiscal Year (FY) 2014-15.



Year To Date:

- DMH completed a quality assurance review of 11 AB 109 mental health contract providers (at 23 separate locations) during this fiscal year. The review included 230 contract monitoring visits and client satisfaction surveys for all outpatient programs.



Year To Date:

- In September, 2014 DMH implemented its fourth Urgent Care Center (UCC), an Exodus Foundation for Recovery (Exodus) LPS designated, 24/7 UCC on the campus of Martin Luther King, Jr. Medical Center. DMH's four UCCs provide crisis intervention and stabilization services, including integrated services for co-occurring substance abuse disorders for individuals 13 years and older who would otherwise be taken to emergency rooms or incarcerated. DMH UCCs served 1,448 AB 109 clients this FY.



Year To Date:

- DMH expanded the Co-Occurring Integrated Network (COIN) program at AVRC in collaboration with DPH. COIN was designed to address the needs of AB 109 Post-release Supervised Persons (PSP) who have a co-occurring chronic substance use disorder (SUD) and severe, persistent mental illness. COIN provides integrated SUD and mental health treatment and follows the traditional Drug Court model. Treatment is for PSPs who are at high risk for relapse and are referred through the AB 109 Revocation Court. The program has served 28 clients this FY.



Year To Date:

- A specialized mental health training curriculum was developed for AB 109 providers with six AB 109 trainings scheduled incorporating evidence-based practices (EBPs), commencing November 2014. Six of the trainings have already been completed:
 - November 5, 2014: Seeking Safety (Trauma focused and Substance Abuse Treatment/EBP)
 - December 2, 2014: Co-occurring Disorders Assessment with the Forensic Population
 - January 21, 2015: High Fidelity Cognitive Behavioral Treatment/EBP
 - February 18, 2015 Assessment and Treatment of Anti-Social Personality Disorders
 - May 12, 2015: SSI and Other Benefits Training for the AB 109 Population
 - June 23, 2015: Treatment and Management of Sex Offenders



Year To Date:

- DMH is collaborating with the Sheriff's Department to implement a pilot project for an in-custody mental health residential treatment facility for AB 109 inmates 60-90 days prior to release. Funding is for one year. The goal is to identify eligible male N3 inmates with mental illness who are at low security risk and are stable enough to complete the remaining 60-90 days of their sentence in a secure 42 bed community-based IMD Step-down facility.



Year To Date:

- 843 of Men's Jail Mental Health Services (JMHS) and Jail Mental Evaluation Team (JMET) clients and 216 of Women's JMHS clients participated in community re-entry planning services as evidenced by attendance in jail in-reach groups. In-reach groups are conducted weekly by DMH Jail Mental Health Linkage staff and DMH contract provider staff.



DMH chose to highlight these items due to their focus on recovery and reentry practices that divert AB 109 individuals from incarceration to treatment in the community as exemplified by the UCC, COIN and in-custody residential treatment programs, as well as prepare incarcerated individuals for successful community reentry through providing jail in-reach groups and training providers in evidence-based practices that foster treatment engagement. In addition, DMH chose to include some basic service and quality assurance data, key components of successful program oversight.





Cynthia A. Harding, M.P.H.
Interim Director

Treatment Activity Status Report

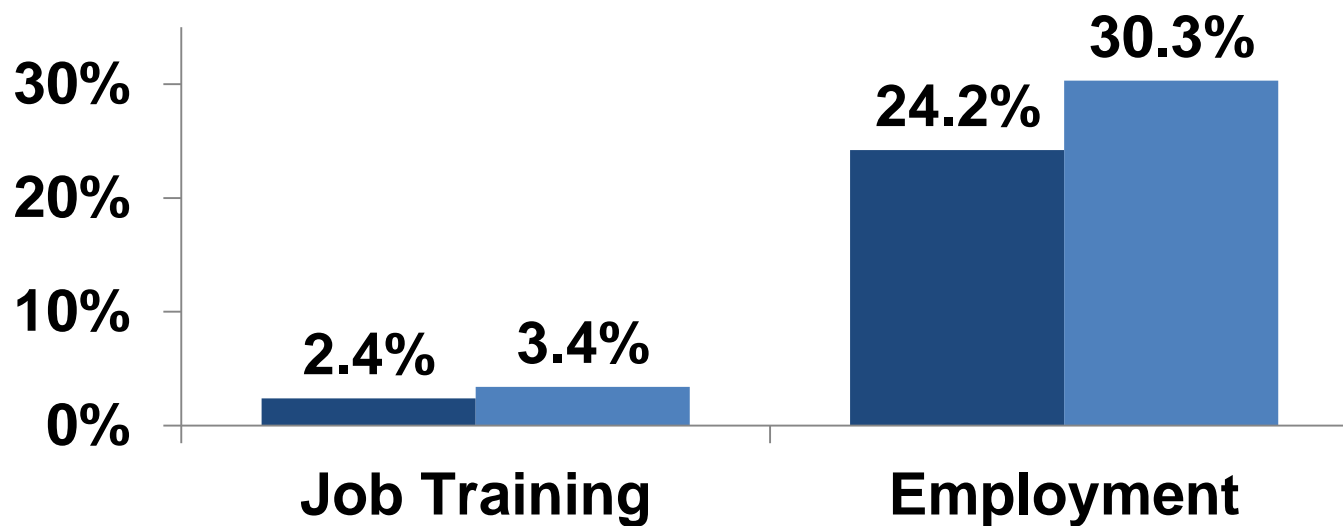
AB 109 Treatment Activity: July 1, 2014 through June 30, 2015

Treatment Activity	Episodes
Admissions	1,974
Discharges	1,733
Positive Compliance	842 (49%)
Negative Compliance	748 (43%)
Other	143 (8%)

NOTE: Data Current as of 07/25/2015.

Life and Health Outcome Measures

Outcome: Increase in Job Training & Employment Among Outpatient Treatment Clients (From Treatment Admission to Discharge, N=733)

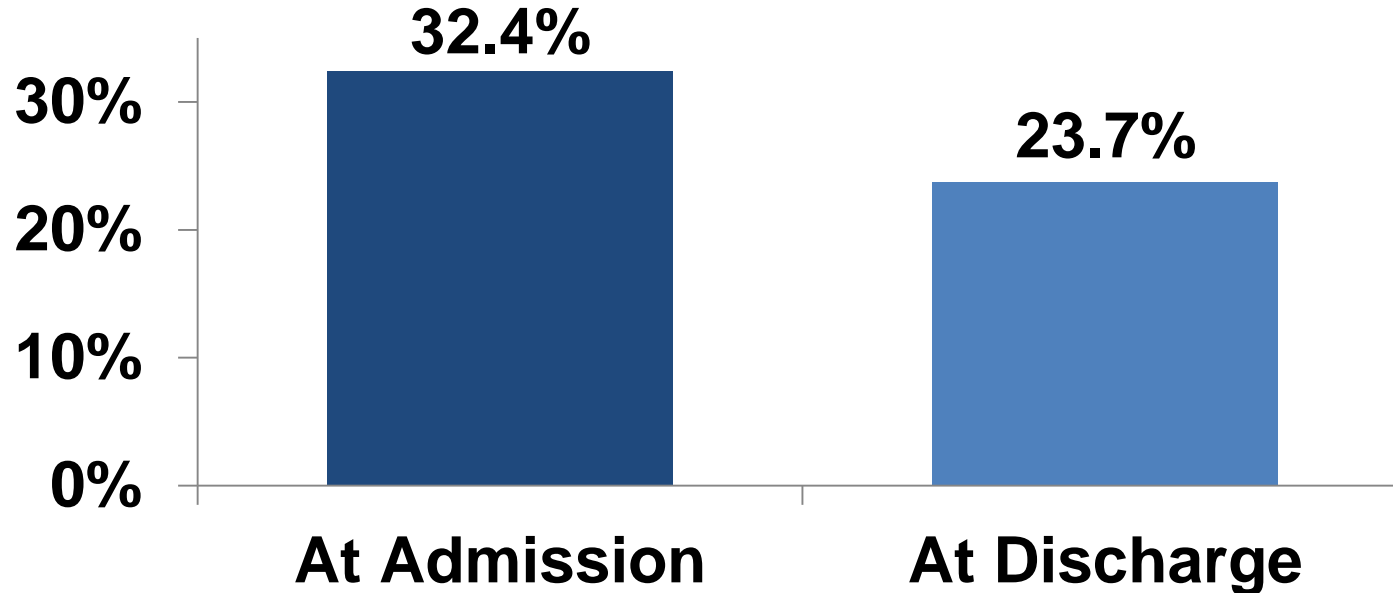


Notes:

- 1) Data Current as of 07/25/2015.
- 2) Analysis data from July 1, 2014 to June 30, 2015.
- 3) The differences were statistically significant at 0.05 level.

■ At Admission ■ At Discharge

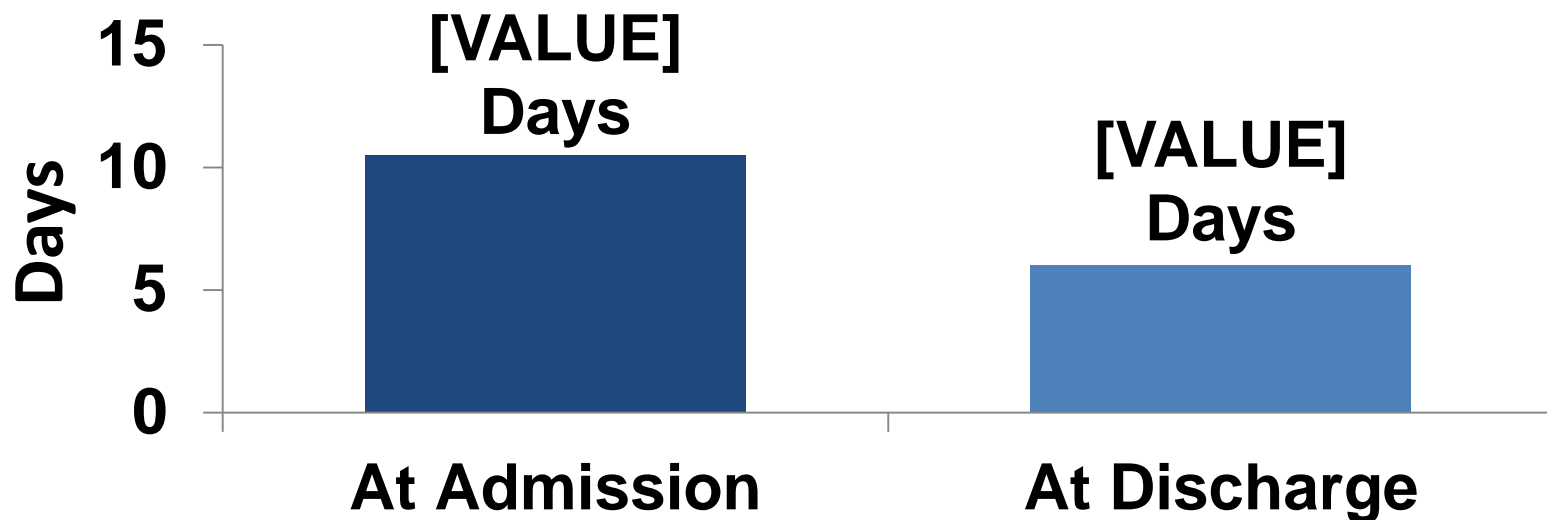
Outcome: Homelessness (N=1,733)



Notes:

- 1) Data Current as of 07/25/2015.
- 2) Analysis data from July 1, 2014 to June 30, 2015.
- 3) The differences were statistically significant at 0.05 level.

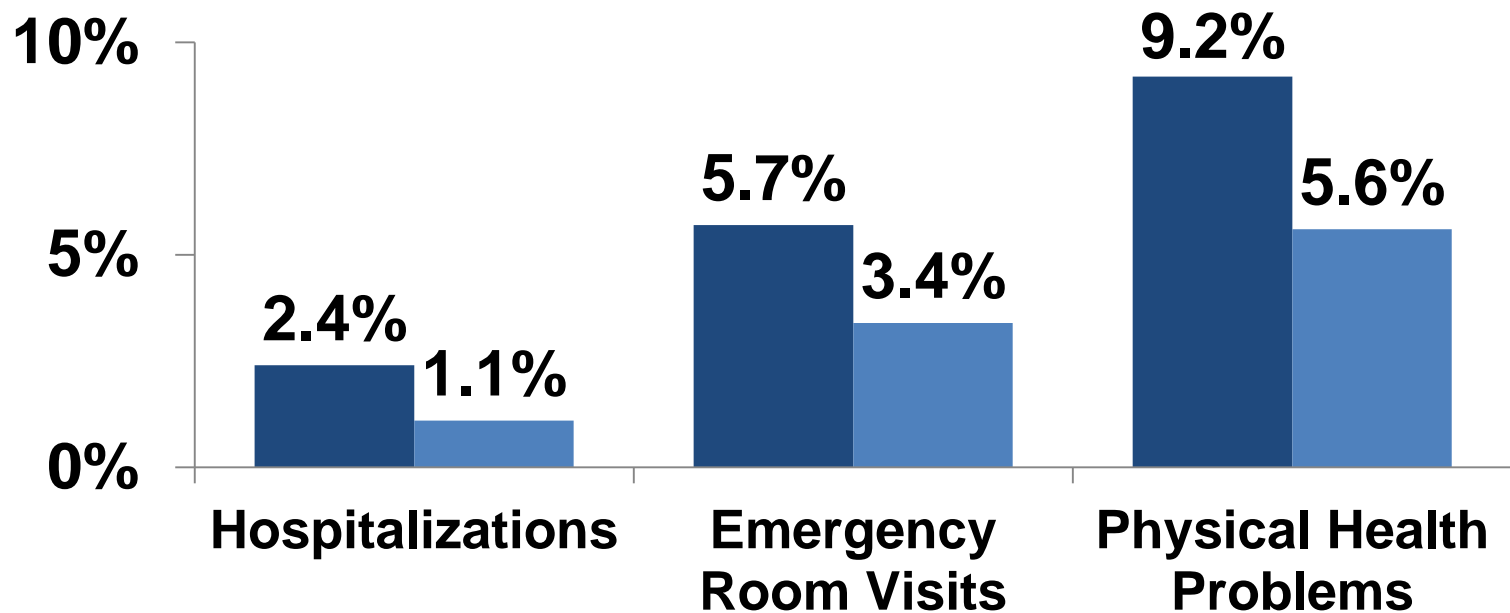
Outcome: Primary Substance Use in Last 30 days (N=1,733)



Notes:

- 1) Data Current as of 07/25/2015.
- 2) Analysis data from July 1, 2014 to June 30, 2015.
- 3) The differences were statistically significant at 0.05 level.

Outcome: Health Indicators (N=1,385)



Notes:

- 1) Data Current as of 07/25/2015.
- 2) Analysis data from July 1, 2014 to June 30, 2015.
- 3) The differences were statistically significant at 0.05 level.

■ At Admission ■ At Discharge

Los Angeles County Sheriff's Department





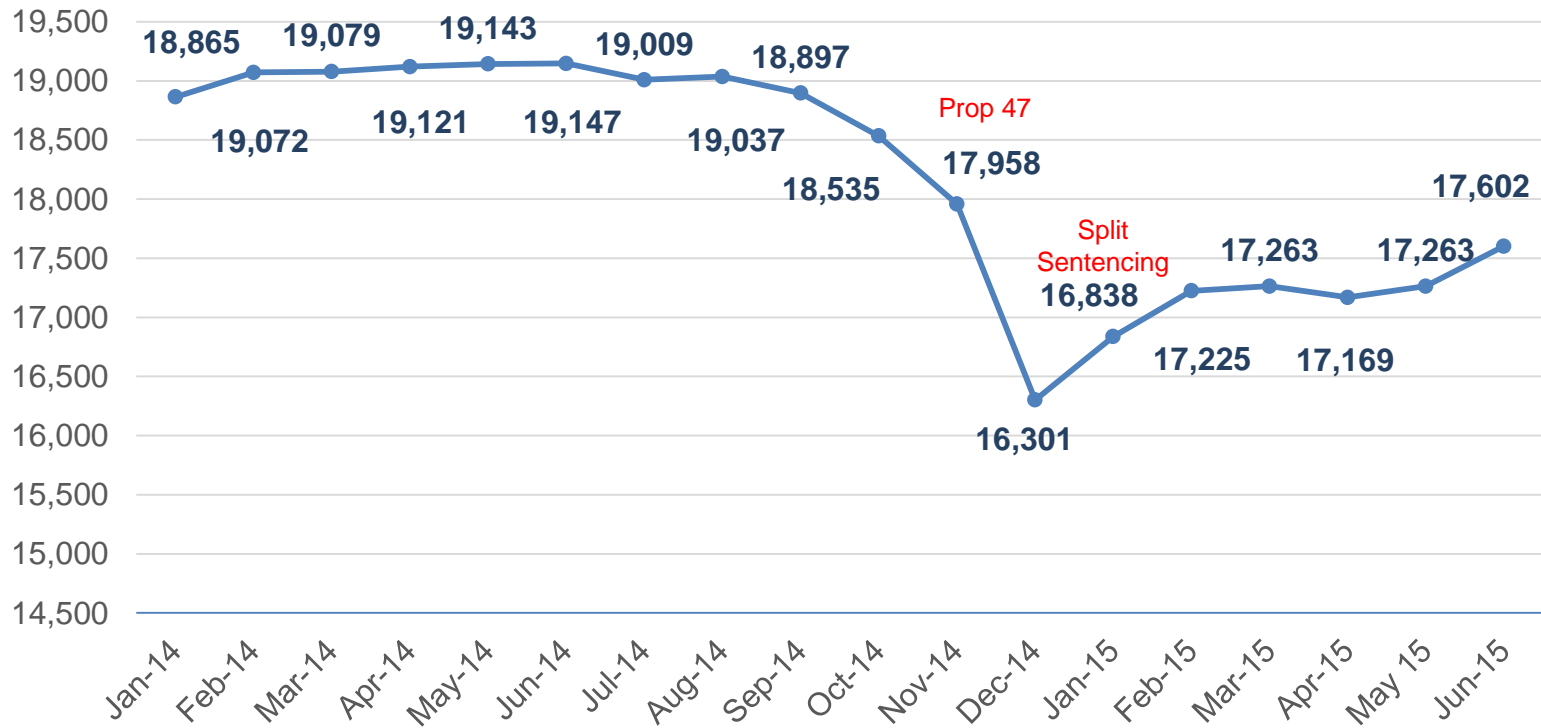
Population Overview



ADIP Trend

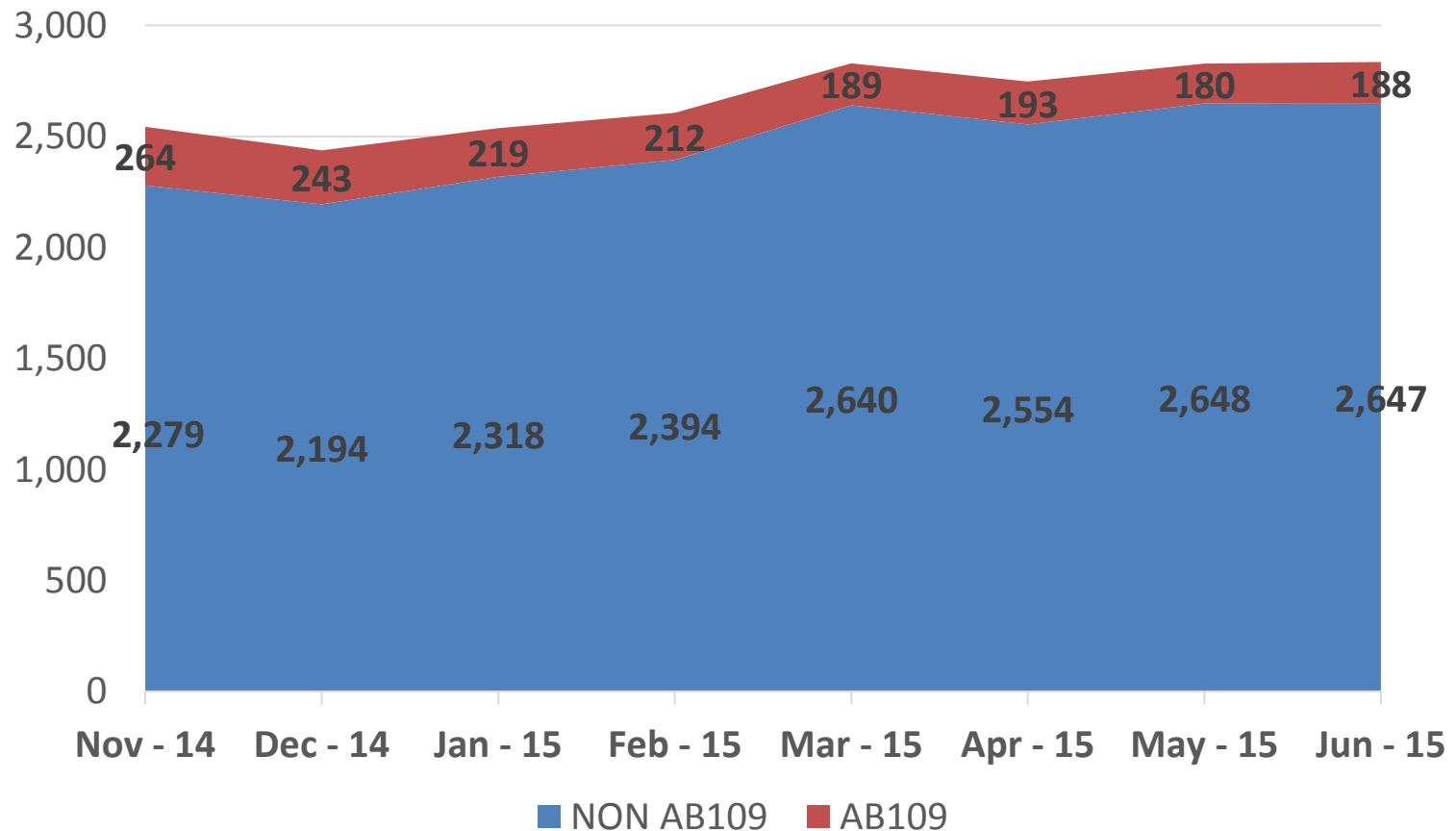
Jail Population Pre and Post Prop 47

January 2014 through June 2015





Mental Health Population





Population Management Strategies



Population Management Strategies

Program Credit Earnings

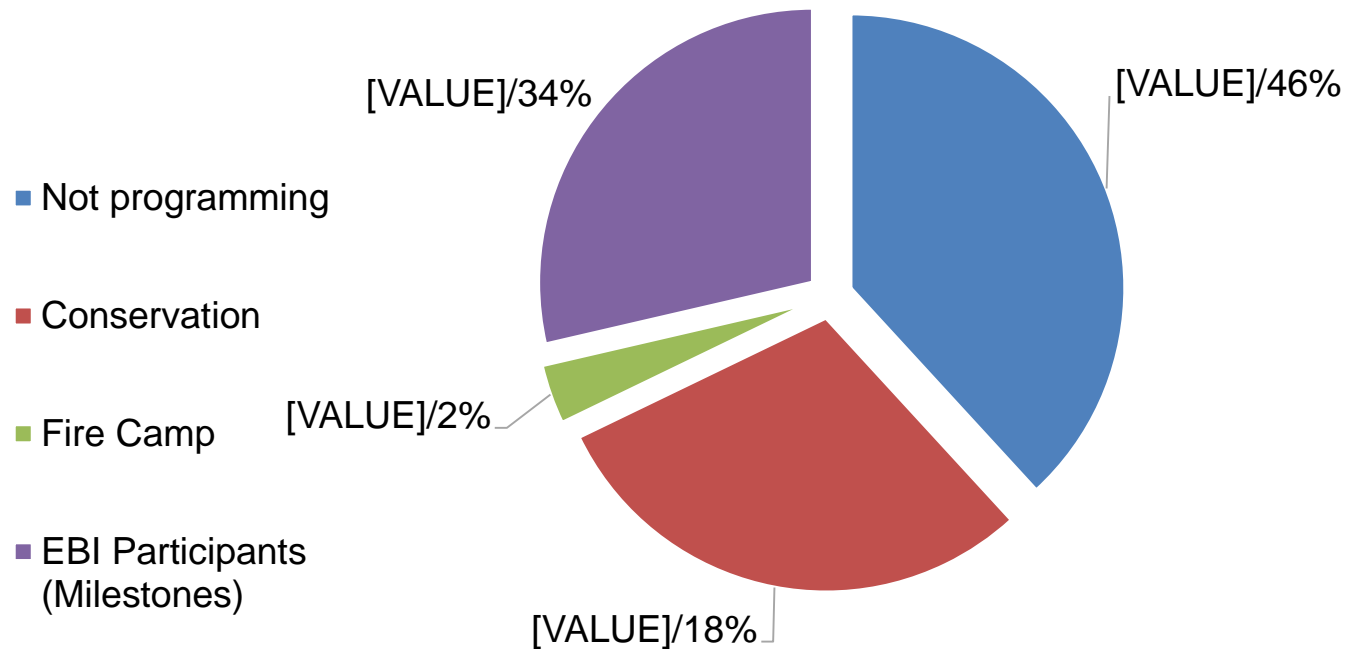
Program	Penal Code	Credit Earned	Type of Inmate
Sentenced GT/WT	4019 PC	Day-for-Day (1:1)	All Sentenced Inmates
Conservation	4019.1 PC	One and One-half-for One (1.5:1)	All Sentenced Inmates
Fire Camp	4019.2 PC	Two-for-One (2:1)	AB 109 Sentenced Inmates
Milestone	4019.4 PC	Up to 6 weeks per year	AB 109 Sentenced Inmates



Population Management Strategies

AB 109 Sentenced Inmates in Programs

AB 109 Sentenced 3,805





Population Management Strategies

Alternatives to Custody – Treatment Programs

FIRST QUARTER 2015	Total Placed on ATC	Failed To Complete The Program	Completed Program
Veteran Program	3	1	5
Transitional Case Management (HIV Program)	7	2	8
Male Program	4	3	1
Female Project	65	15	64
Women with Children	2	0	2
QUARTERLY TOTALS:	81	21	80

* Several of the participants who completed the EMP program in this quarter were placed in the program during a previous quarter.



Population Management Strategies

Re-entry Services - Vital Records Program

Birth Certificate Request	2013	2014	2015	Total
Total Birth Certificates Issued	2	109	240	351
Total Birth Certificate Request Unable To Process	8	24	20	52
Total Pending Birth Certificate Requests	0	0	107	107
Total Birth Certificates Requested	10	133	367	510
DMV Identification Card Request	N/A	483	441	924



Population Management Strategies

Benefit Enrollment Affordable Care Act (ACA)

	Jun	Jul	Aug	Total
Direct inmate contact/In-Reach	1,119	483	825	2,427
Applications cleared by DPSS	254	289	323	866
Applications in queue	3	1	0	4
Applications approved by DPSS	251	288	323	862
Benefits received	158	165	88	411
Benefits denied	4	2	2	8



LA County - PAL Warrants

Absconder Info as of June 30, 2015

Based On Data From CWS

ACTIVE WARRANTS

Warrant Type	Count
Active Warrants (LASD Areas)	285
Active Warrants (Other Agencies)	331
Active Warrants (LAPD)	564
Active Warrants (Transient, Unknown Last Location)	295
Active Warrants (Out of County)	148
Total Workable Warrants	1,524

REPEAT ABSCONDERS

# Warrants Issued (Based on CII)	# PSPs
10 Warrants Issued	1
9 Warrants Issued	6
8 Warrants Issued	20
7 Warrants Issued	41
6 Warrants Issued	100
5 Warrants Issued	253
4 Warrants Issued	543
3 Warrants Issued	1,068
2 Warrants Issued	2,049



Parole Compliance Team Stats

Yearly Comparison as of June 30, 2015

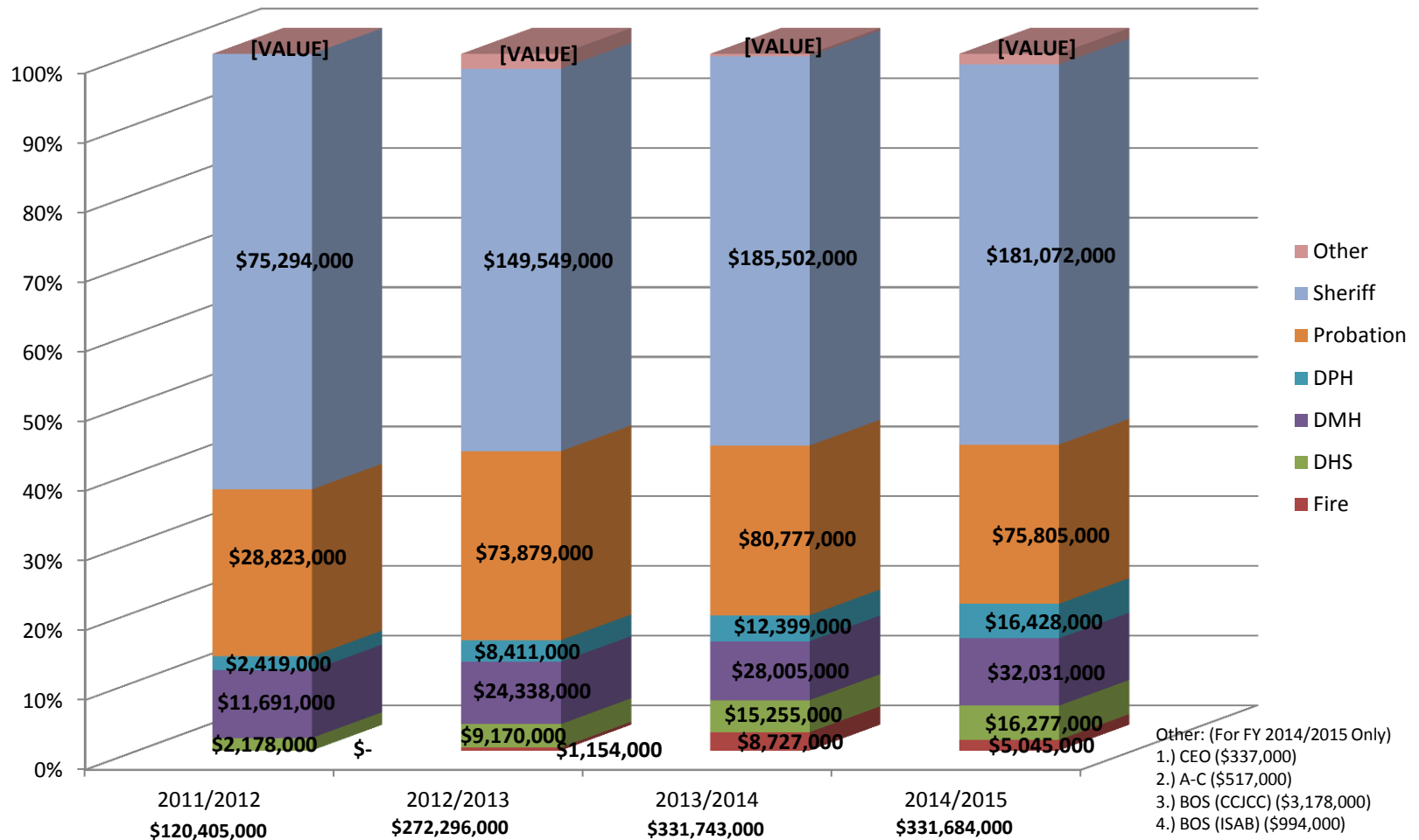
	2011	2012	2013	2014	2015 Through 06/30/15	Total Since Inception
PSP Arrests	9	343	455	157	23	987
PSP PAL Arrests	3	56	233	341	217	850
Other Arrests	156	887	337	251	69	1,700
PAL Arrests	9	49	39	22	25	144
Firearms Seized	28	149	138	121	12	448
Compliance Checks Conducted	98	1,406	1,119	457	91	3,171
No Show Locations	167	199	24	24	46	460
Address Verifications	258	1,265	731	966	665	3,885
FIRS	505	5,536	4,199	2,816	997	14,053

Los Angeles County Chief Executive Office



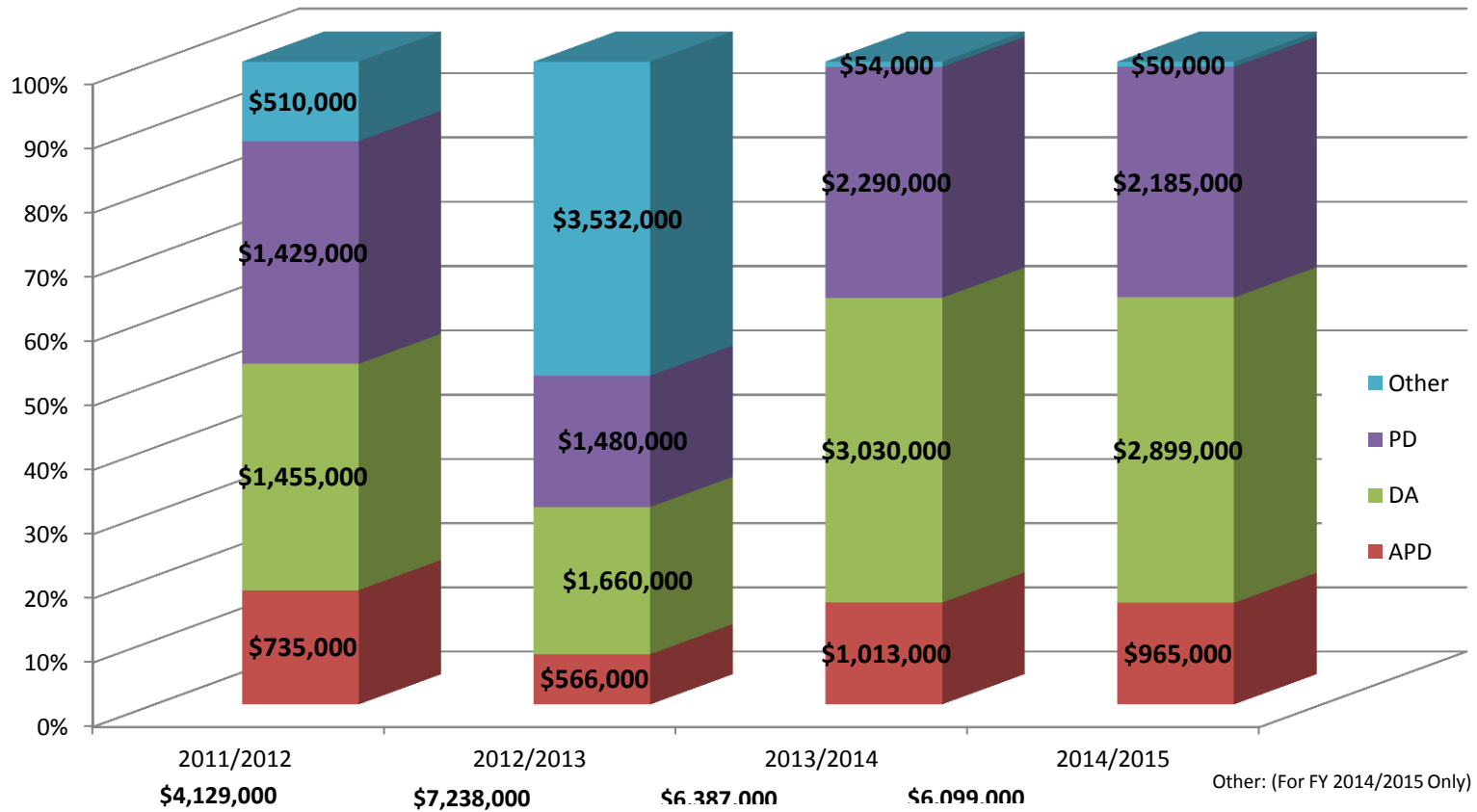
Realignment Budget (AB 109) for the County of Los Angeles Fiscal Years 2011-2015

Total money allocated = \$1,056,128,000 (General Operations Budget)

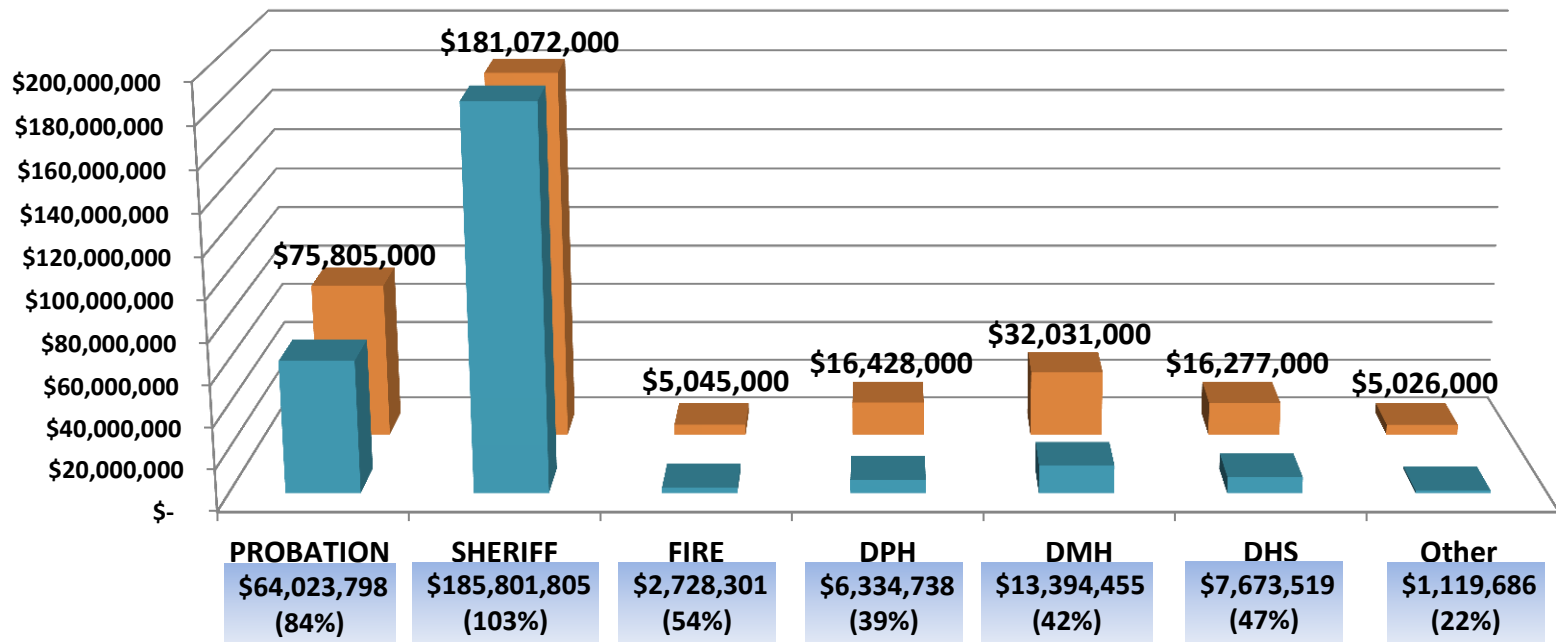


Realignment Budget (AB 109) for the County of Los Angeles Fiscal Years 2011-2015

Total money allocated = \$23,853,000 (Revocation Budget)



AB 109 Budget: 3rd Qtr YTD Claims vs Budget FY 2014-15 (General Operations Total \$281,076,302)



■ 3rd Qtr YTD Claims

■ Budget

Other:

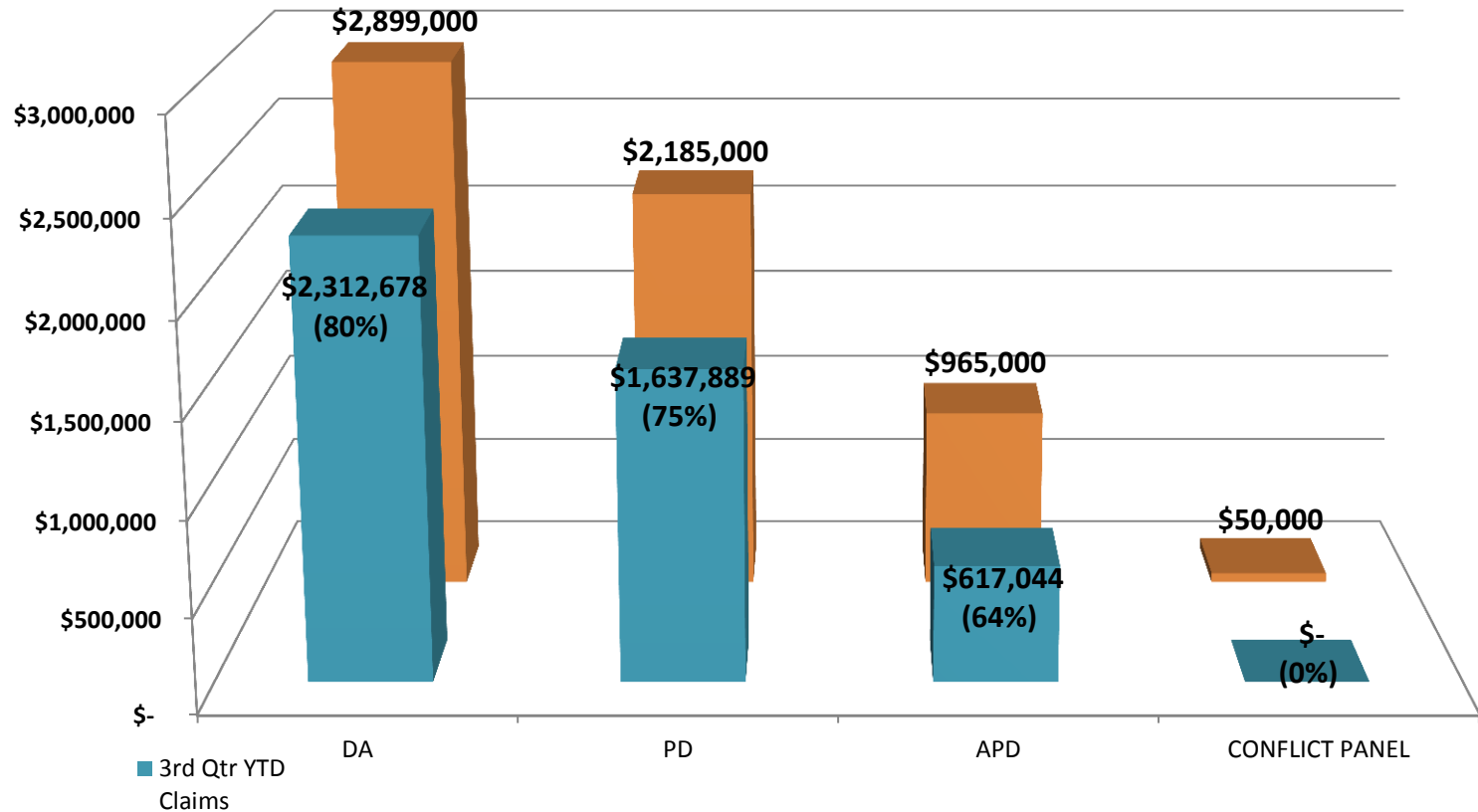
1.) CEO (\$139,940)

2.) A-C (\$160,776)

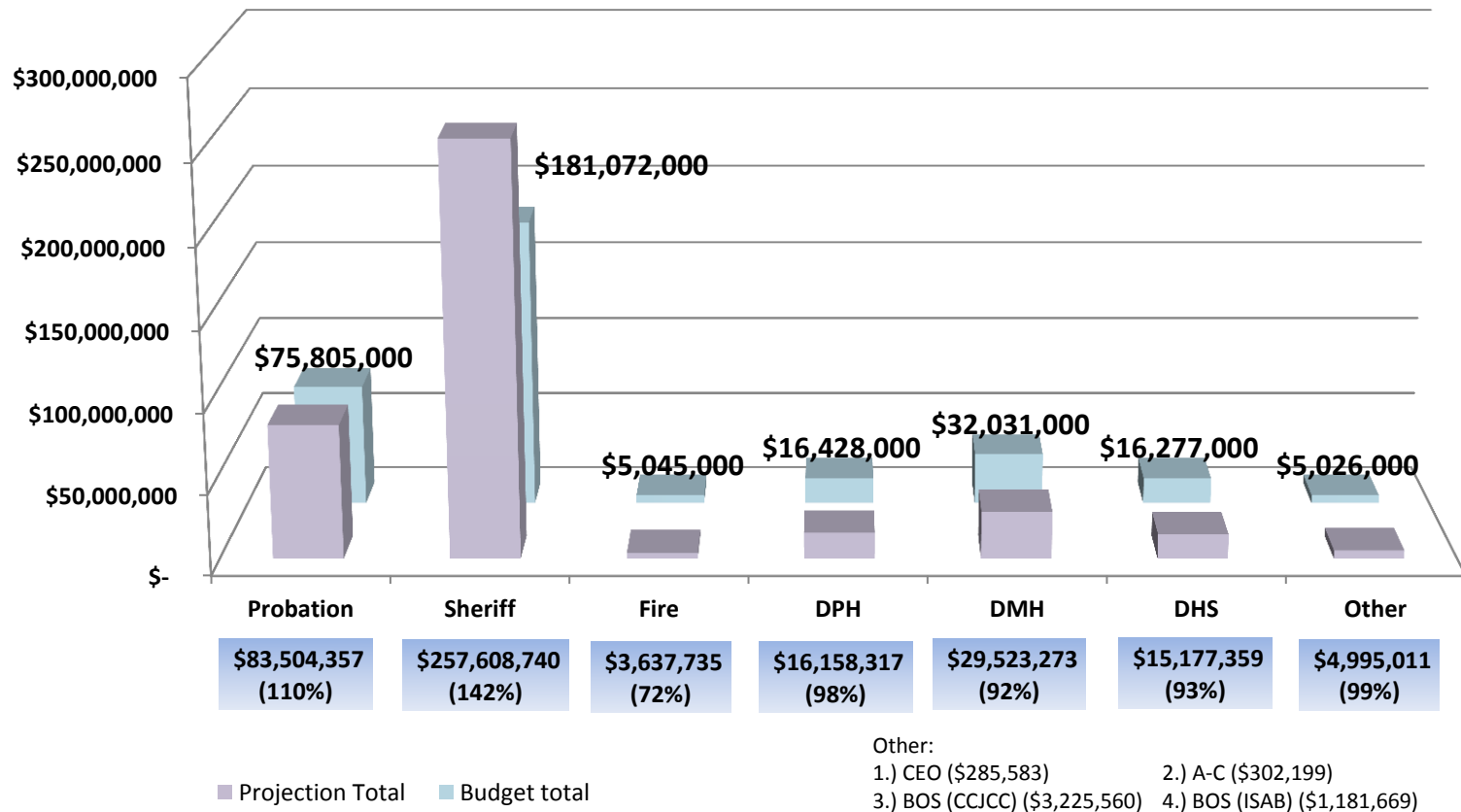
3.) BOS (CCJCC) (\$169,170)

4.) BOS (ISAB) (\$649,800)

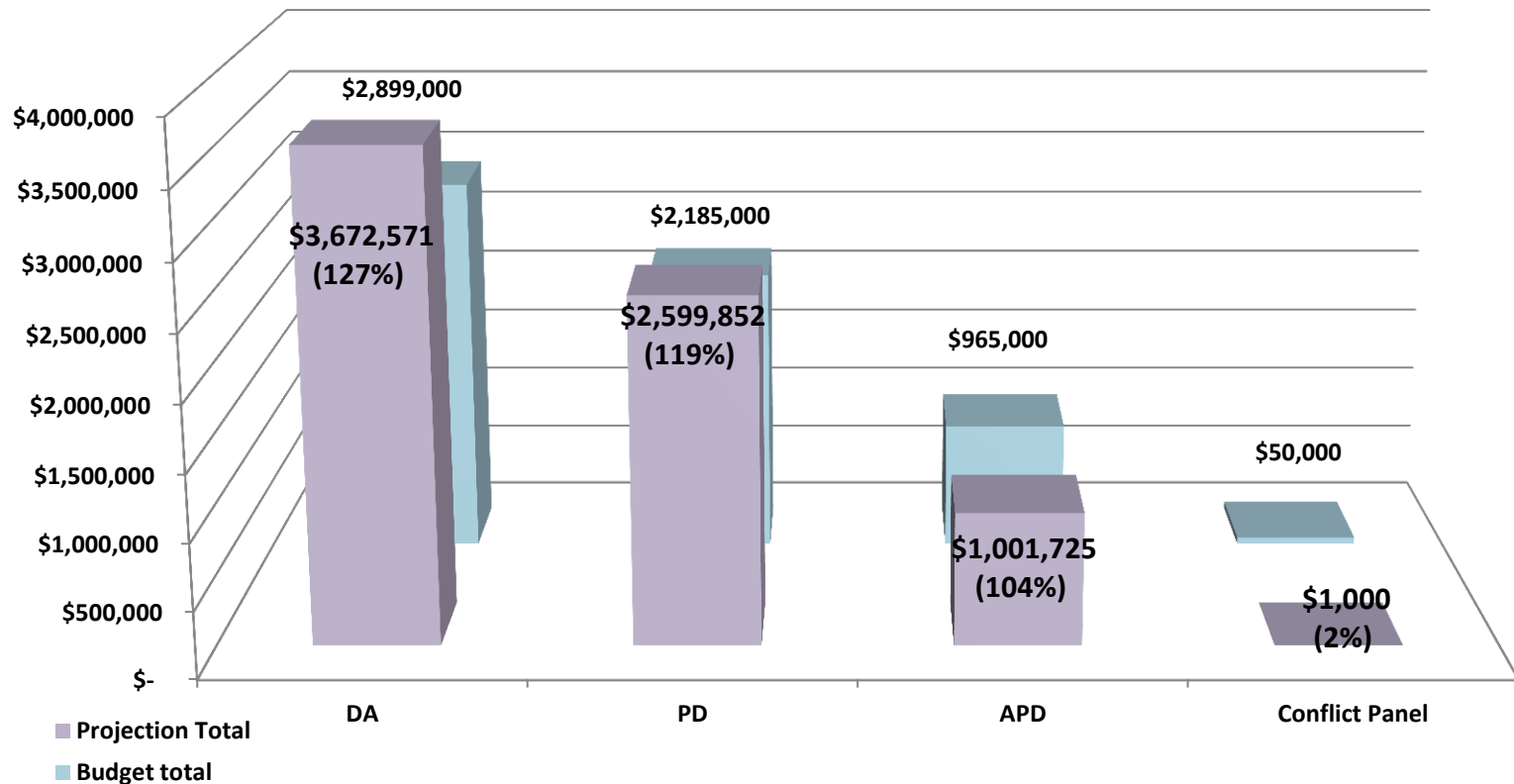
AB 109 Budget: 3rd Qtr YTD Claims vs Budget FY 2014-15 (Revocation Total \$4,567,611)



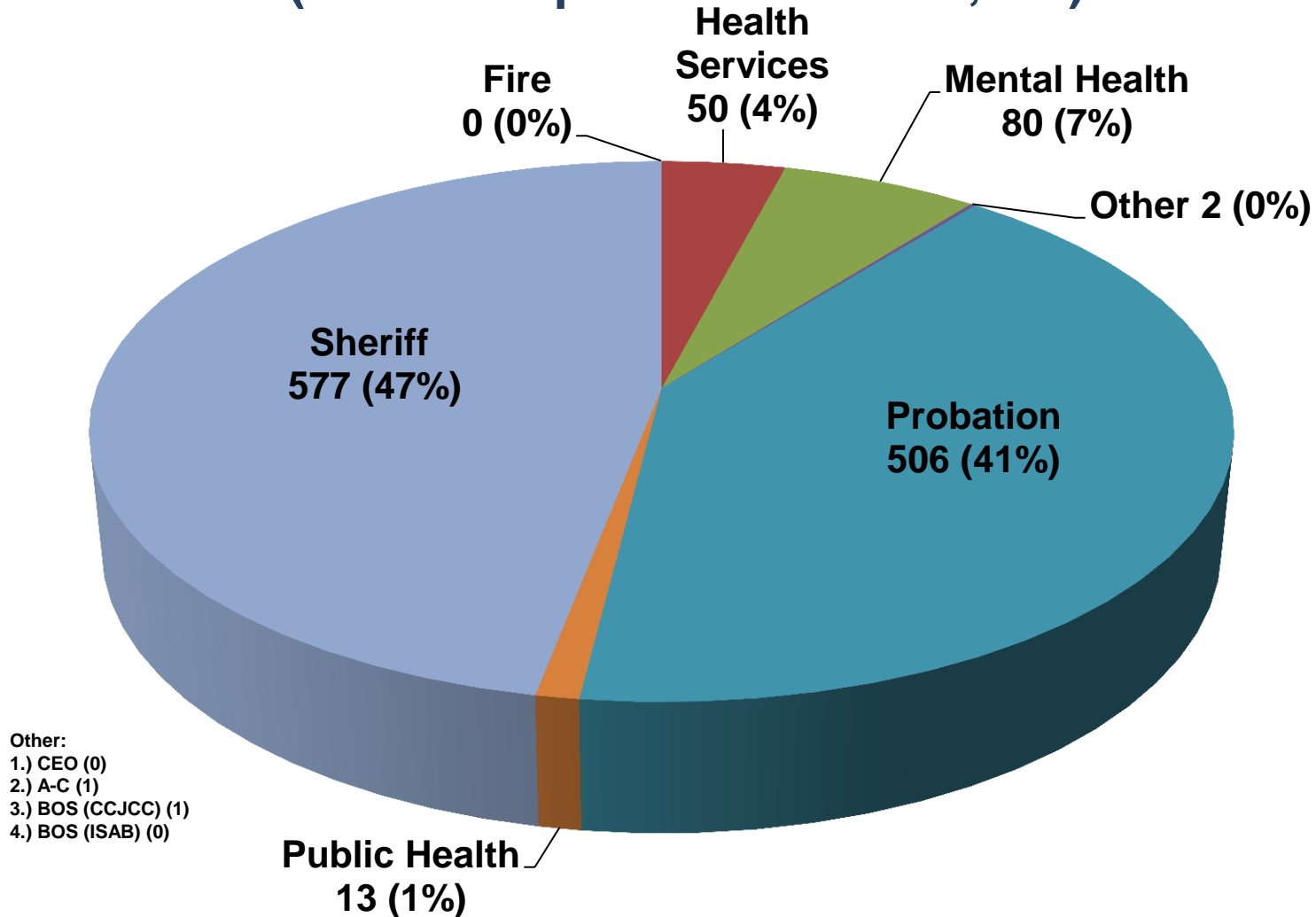
AB 109 Budget: Projected Claims vs Budget FY 2014-15 (General Operations Total \$410,604,792)



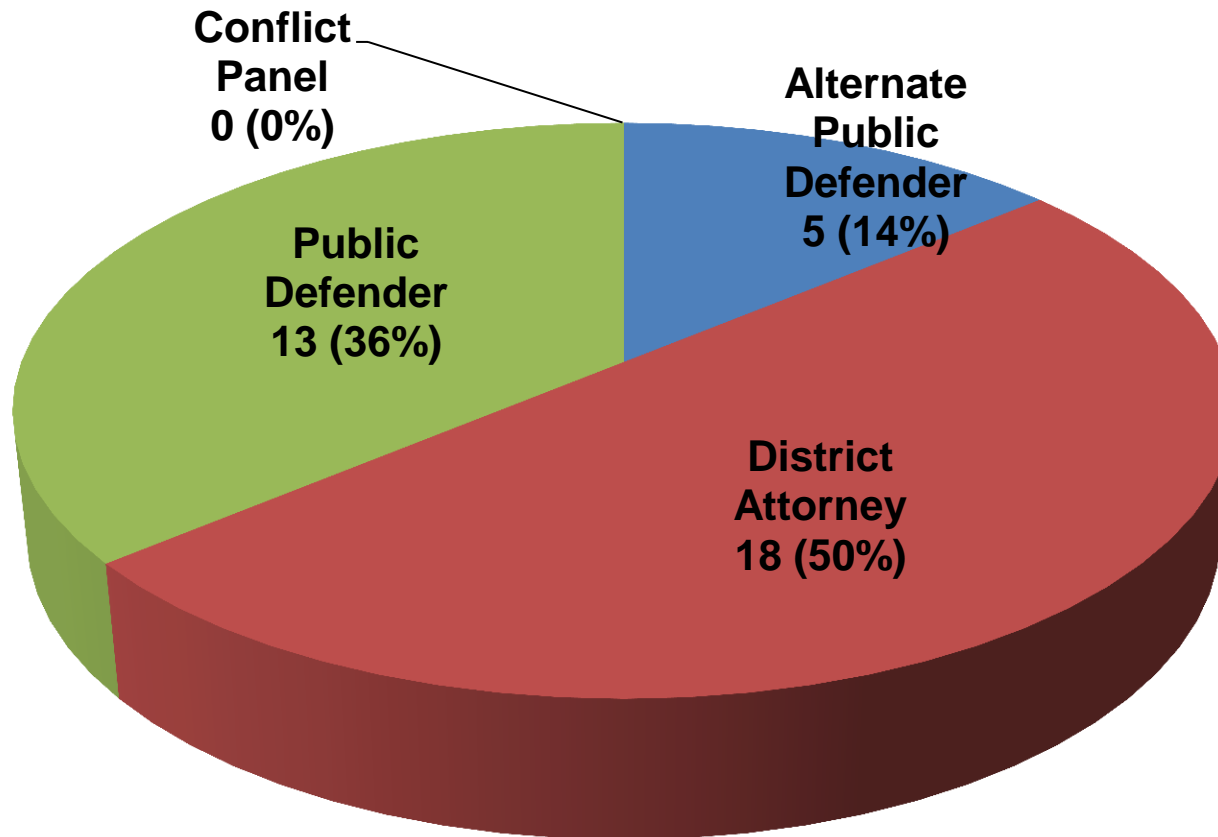
AB 109 Budget: Projected Claims vs Budget FY 2014-15 (Revocation Total \$7,275,148)



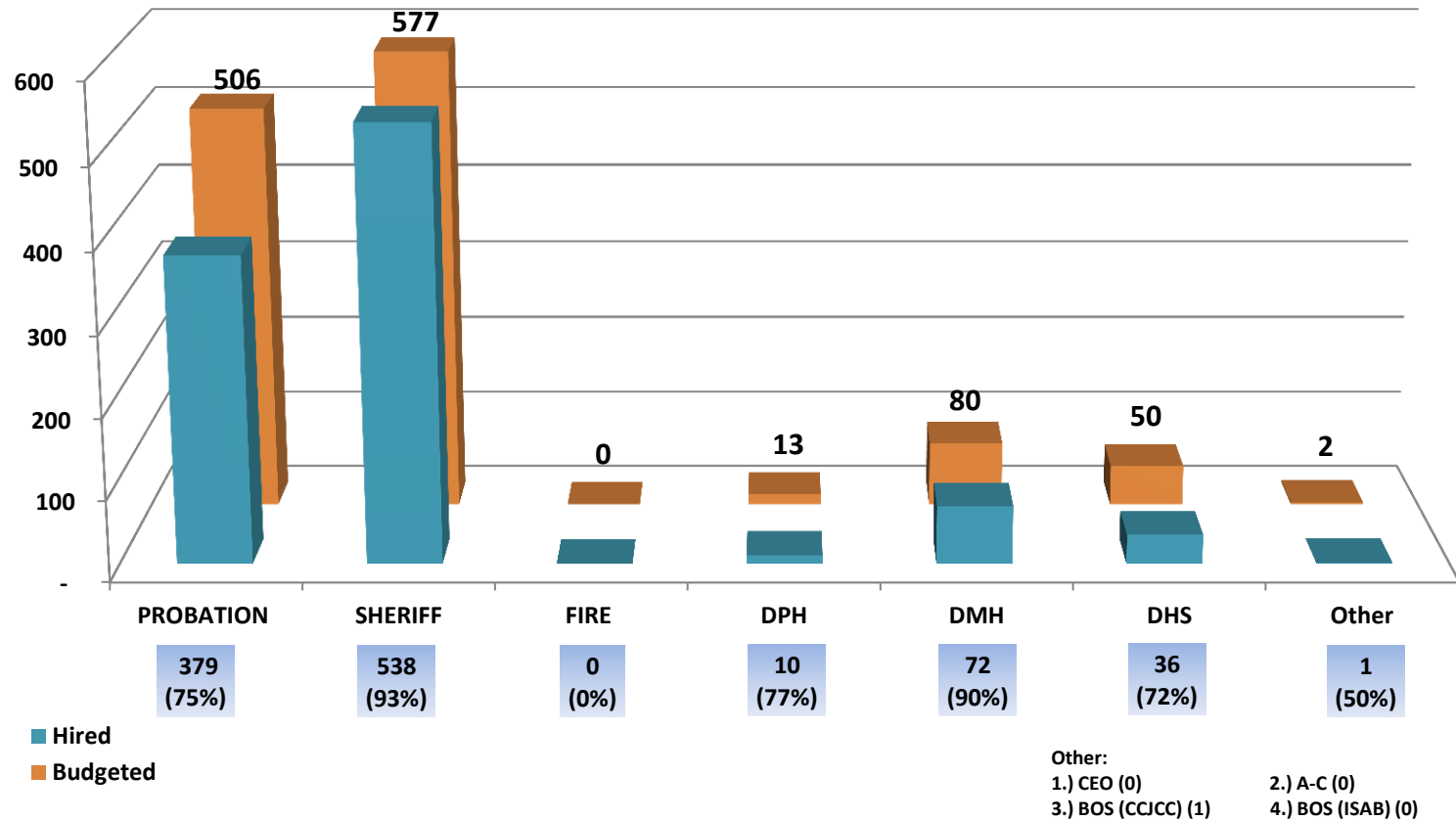
AB 109 Staffing: Allocation by department FY 2014-15 (General Operations Total 1,228)



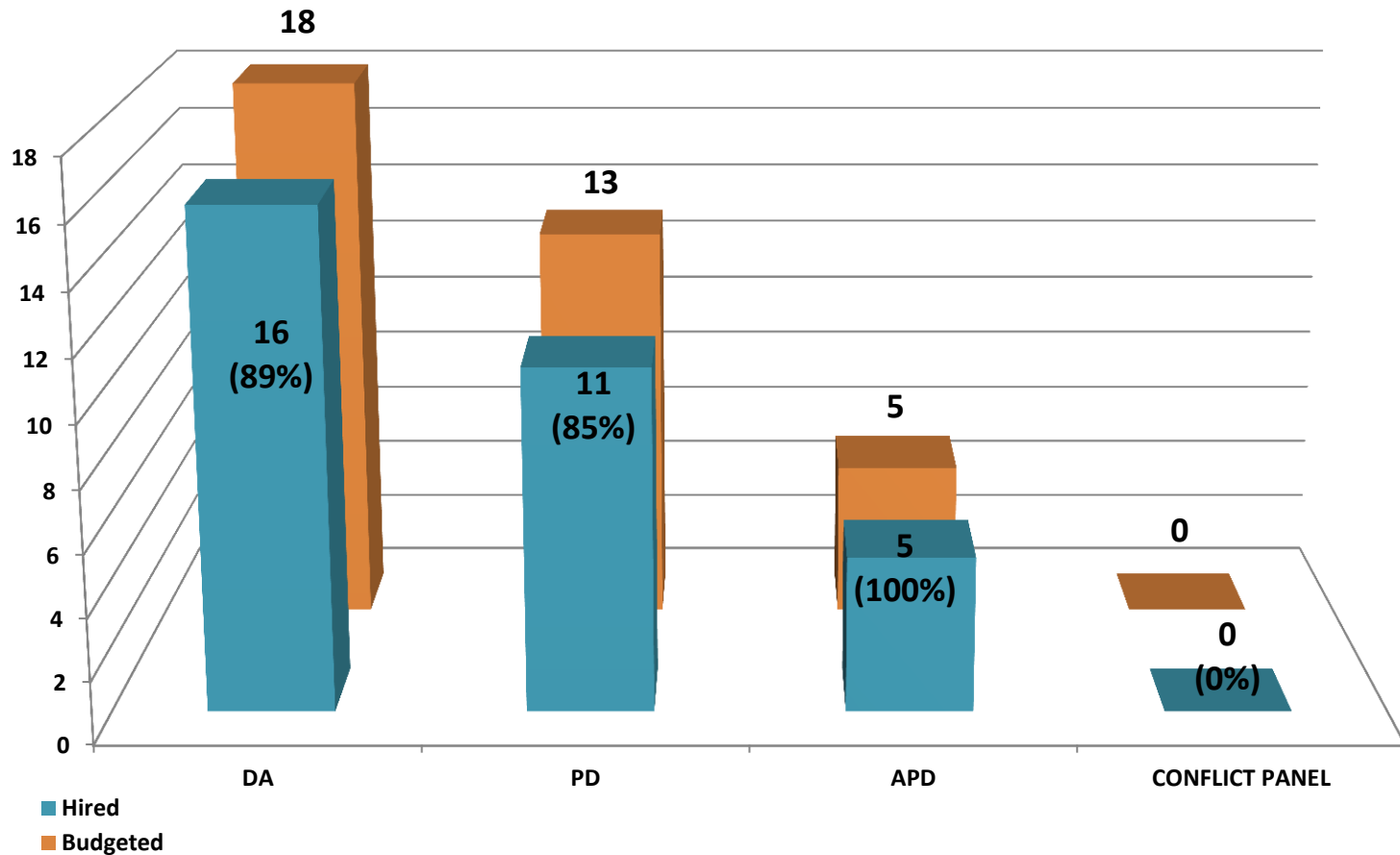
AB 109 Staffing: Allocation by department FY 2014-15 (Revocation Total 36)



AB 109 Staffing: 3rd Qtr YTD Hired vs Budgeted FY 2014-15 (General Operations Total 1,036)



AB 109 Staffing: 3rd Qtr YTD Hired vs Budgeted FY 2014-15 (Revocation Total 32)





Questions?

