



Structural Change

**Addressing Social Determinants
of Health through Coalitions**

Toni Cooper
Joaquin Gutierrez
November 14, 2021

By the end of this presentation, participants will be able to:

- **Define structural change;**
- **Describe the relationship between structural change and social determinants of health;**
- **Recognize the importance of structural-level interventions for reducing the structural drivers of health inequities within healthcare settings**



n. The conditions and circumstances into which people are born, grow, live, work, socialize, and form relationships and the systems that are in place to deal with health and wellness.

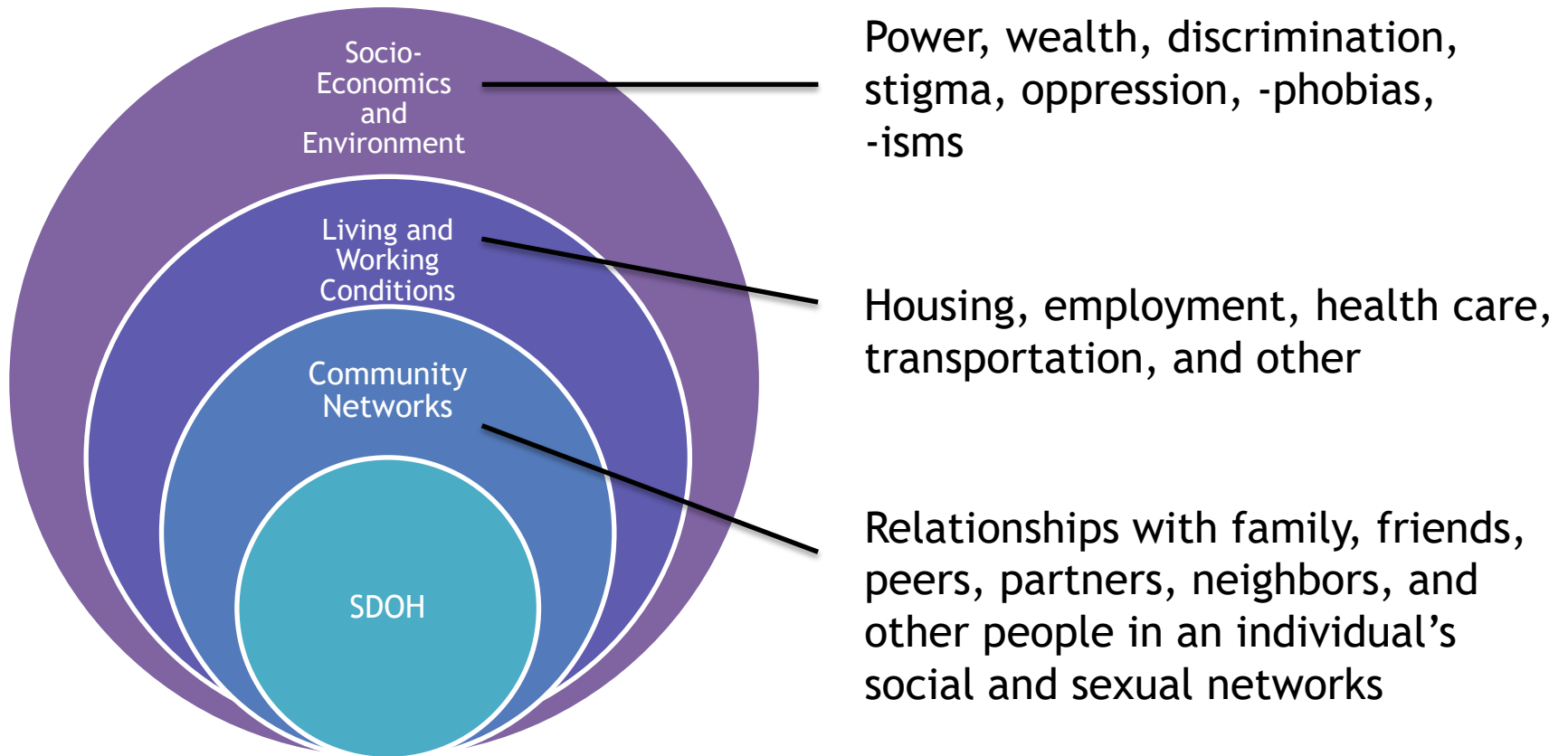
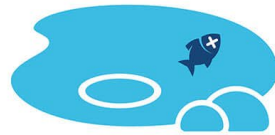




Illustration Citation: "Meeting Individual Social Needs Falls Short Of Addressing Social Determinants Of Health," Health Affairs Blog, January 16, 2019. DOI: [10.1377/hblog20190115.234942](https://doi.org/10.1377/hblog20190115.234942)

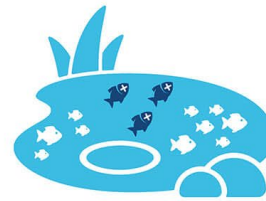
To Understand Structural Racism, the Racial Equity Institute Developed the Groundwater Metaphor

In a lake in front of your house you find a dead fish ...



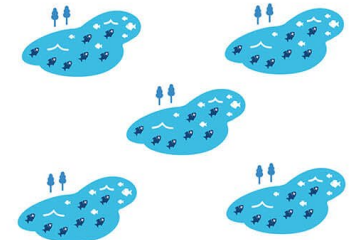
... so you analyze the fish to understand what caused its illness.

The next day, half the fish are dead ...



... so you analyze the lake to understand how it's contaminated.

The next day, half the fish are dead in the five nearby lakes ...



... now you analyze the groundwater to understand how all the lakes have the same contamination.

Structural racism is in the groundwater—and it creates the underpinning for the racial disparities and inequity we see in virtually every issue.

Source: The Bridgespan Group, adapted from the Racial Equity Institute

Structural Change

Structural change (n.): a new or modified **practice, program or policy** that supports **transformative outcomes** and can be **sustained** over time, even when the initial key actors are no longer involved. It may directly or indirectly impact individuals.

Practice, Program, or Policy

Prac•tice

n. A standardized action or manner of doing something.

Pro•gram

n. A set of ongoing organized activities with a desired outcome.

Pol•i•cy

n. Written guidelines that regulate the environment and/or the individual within the environment

- A community clinic implements a new practice of routinely offering integrated multi site HIV and STD testing to clients who utilize primary care services.
- A health department develops a new program that includes free naloxone distribution at bars and night clubs.
- A board of education changes its policy to allow excused absences for minor consent service.

Sustainability Continuum

One-time
testing event

Clinic staff
trained on
offering routine
HIV testing

New protocol
to implement
integrated multi
site screening as
routine service

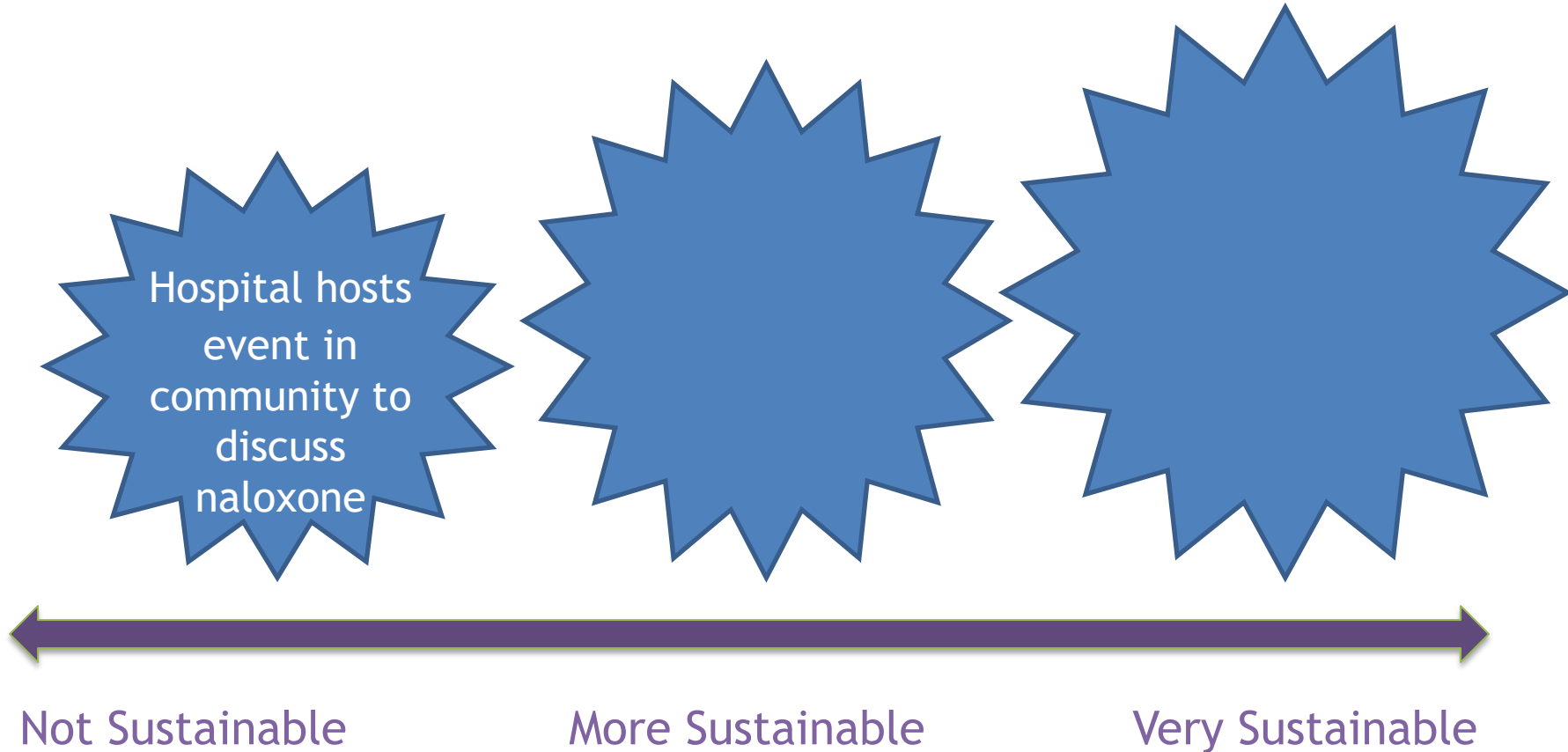


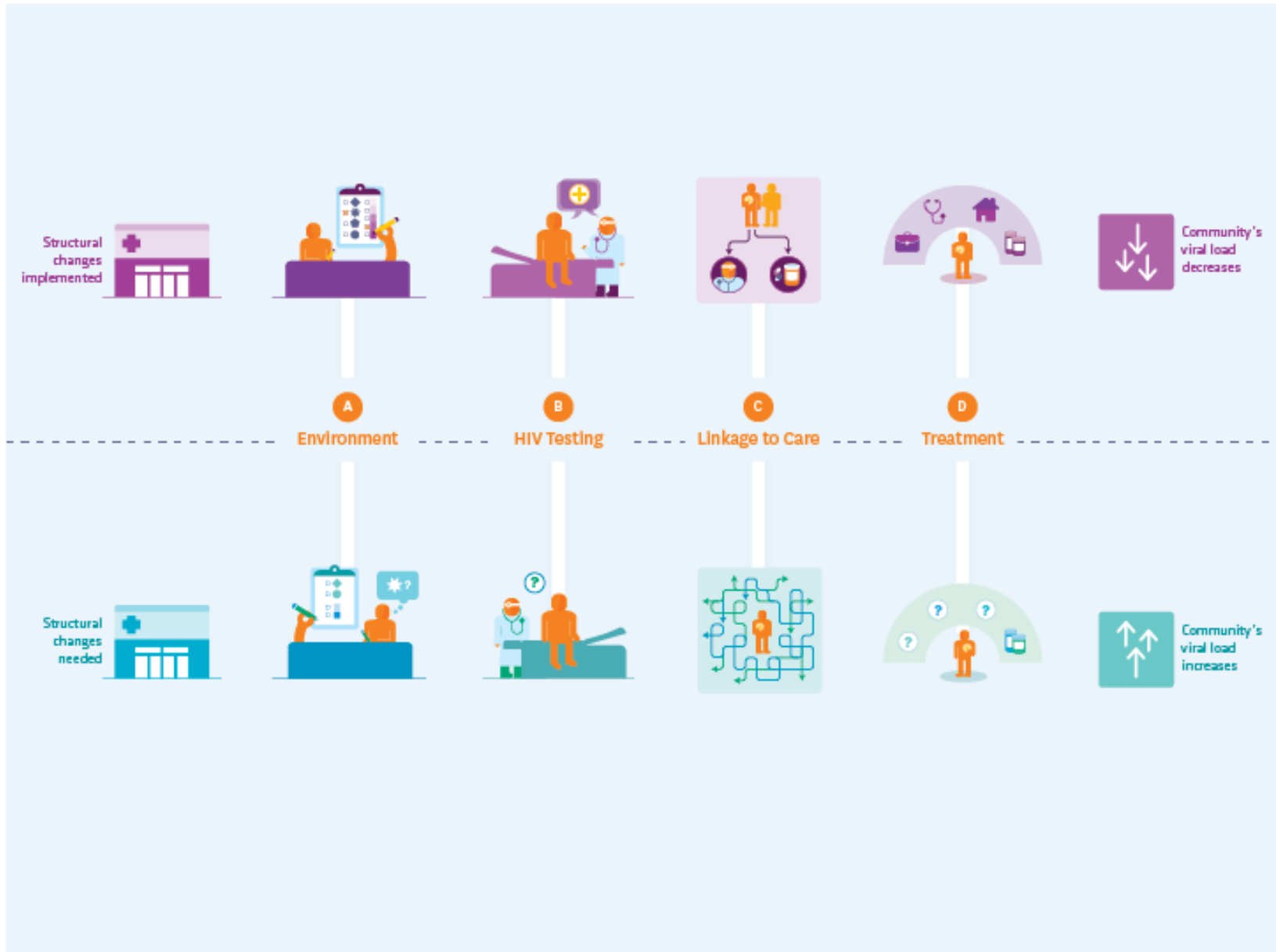
Not Sustainable

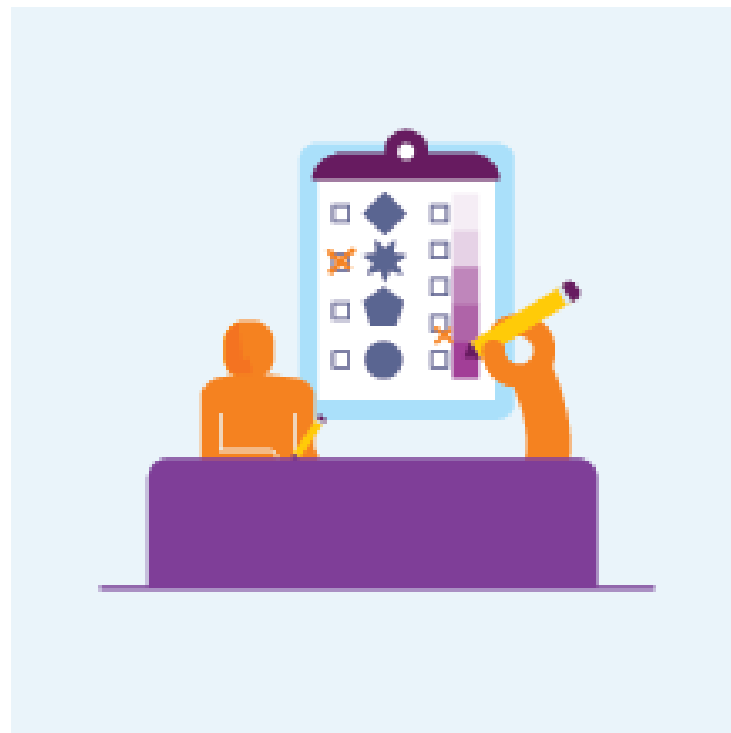
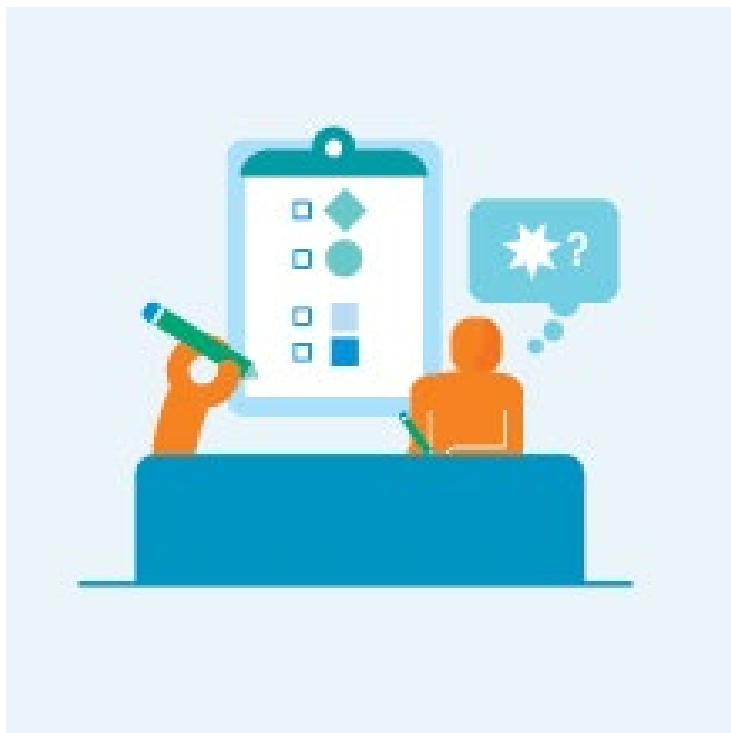
More Sustainable

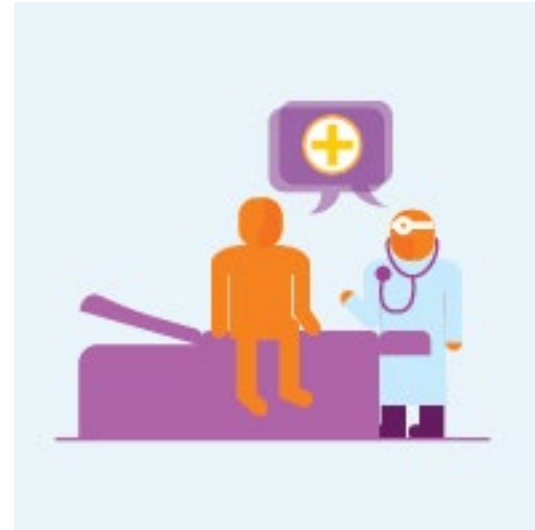
Very Sustainable

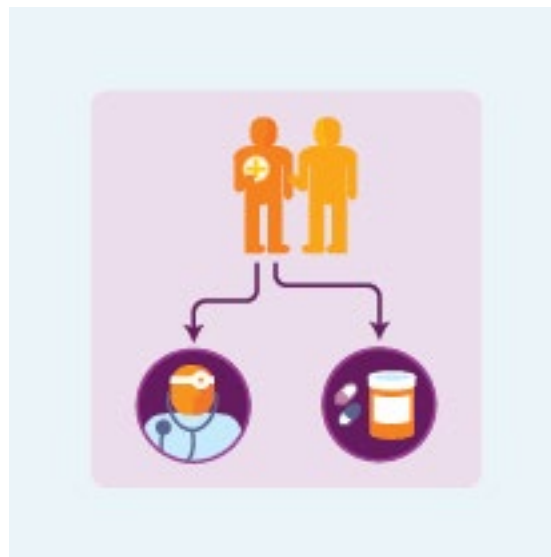
Sustainability Continuum-Exercise

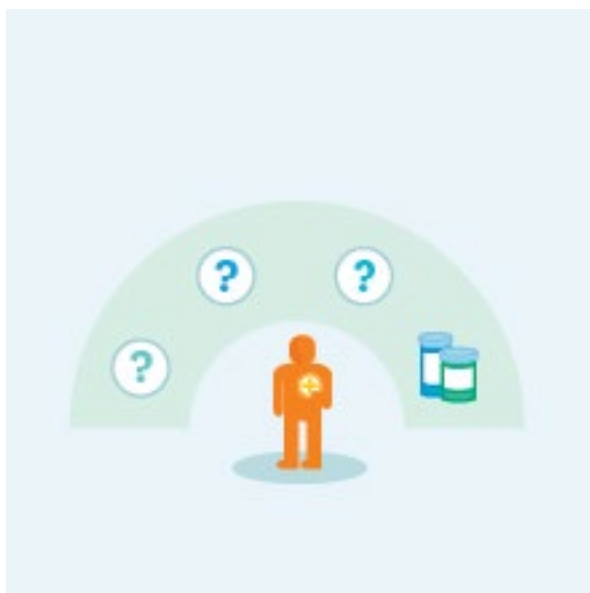


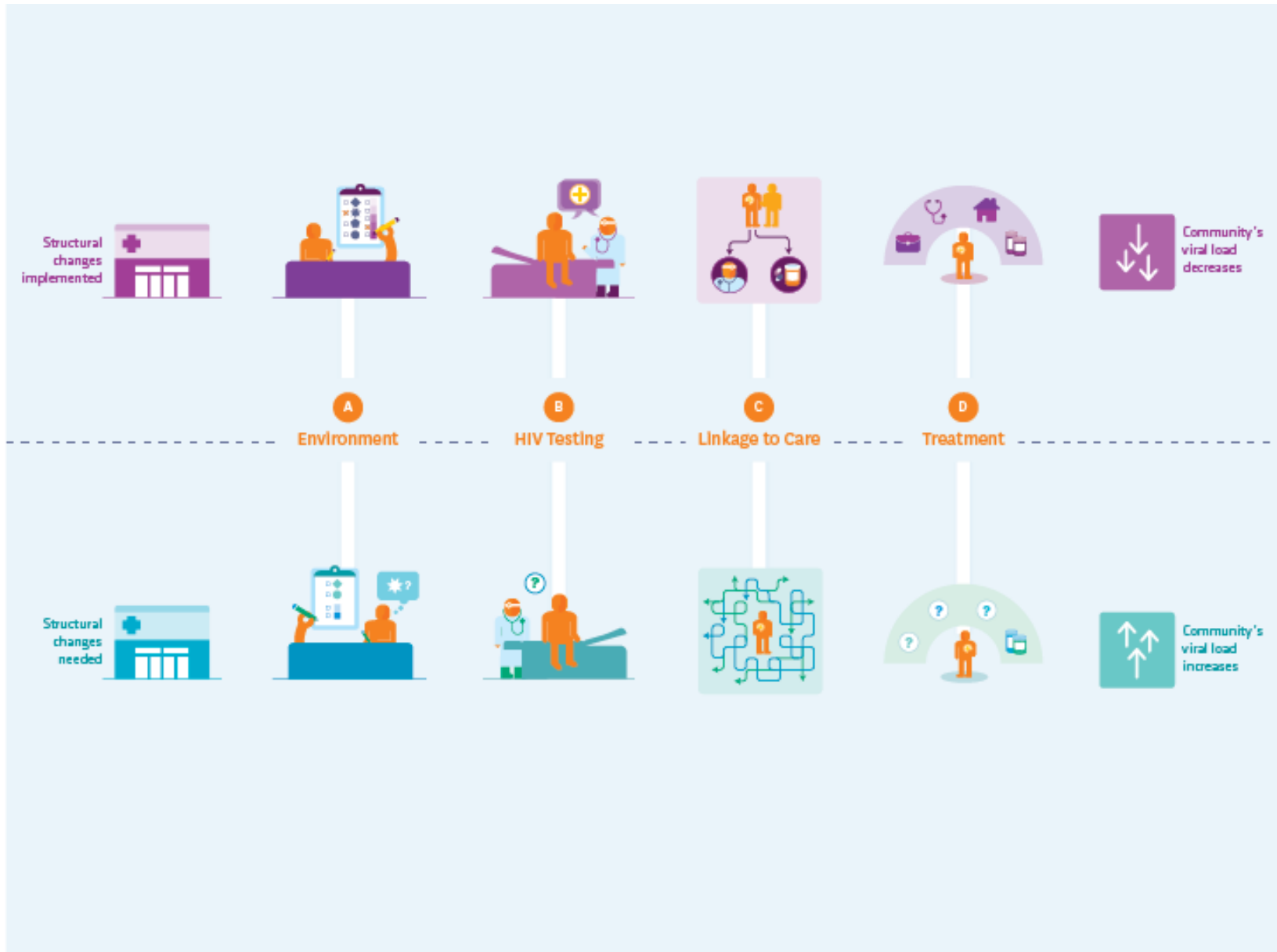












- Thinking about your past experiences with an HIV service organization what structural changes would you center?
- Is it a program, practice, or policy?
- How does it disrupt inequity in health care?
- What resources are needed?
- How can it be sustained?

COALITION & STRUCTURAL CHANGE

Clinical vs Macro Interventions

Individual (Micro) Intervention



Community (Macro) Interventions





Coalition

n. A voluntary, strategic alliance of individuals and organizations created to achieve a common purpose by sharing risks, responsibilities, resources and rewards.

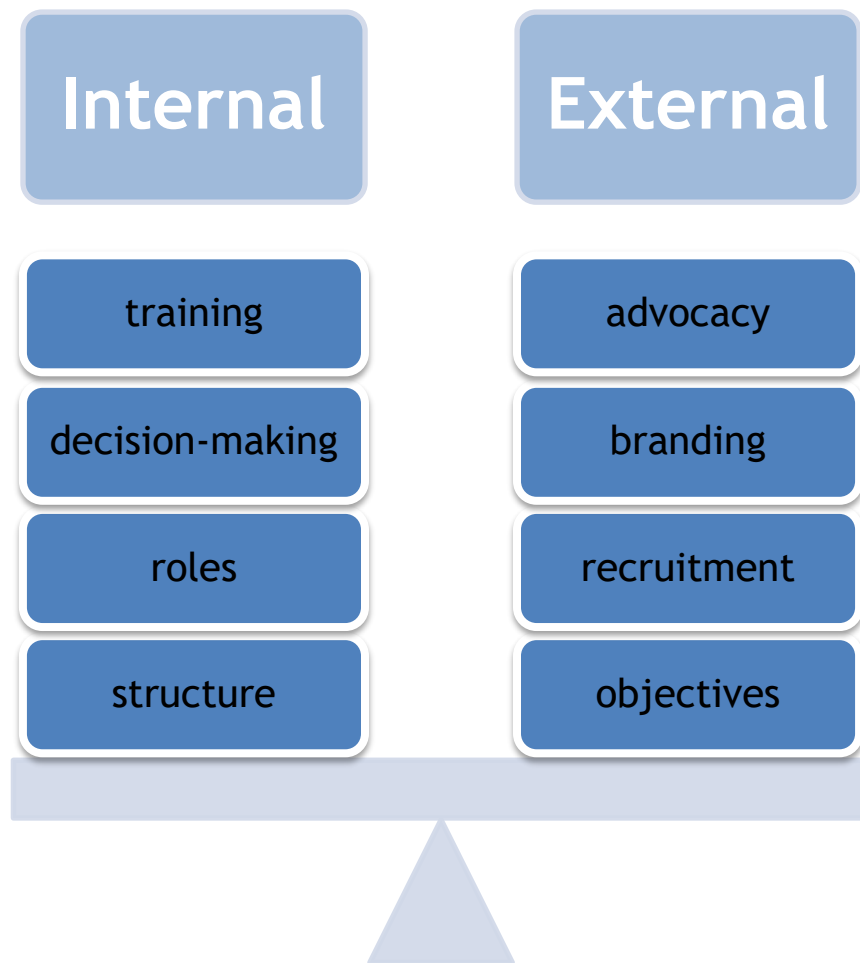
- **Mission:** The mission of the C2PLA Coalition is to mobilize the community and create structural change to reduce HIV/AIDS among young gay and bisexual men of color.
- **Leadership Structure:** Two Coalition Co-Chairs, Two Co-Chairs for each subcommittee
- **Decision-Making Process:** Modified Consensus
- **Meeting Frequency:** Bi-monthly coalition meetings, monthly subcommittee meetings, one annual coalition retreat



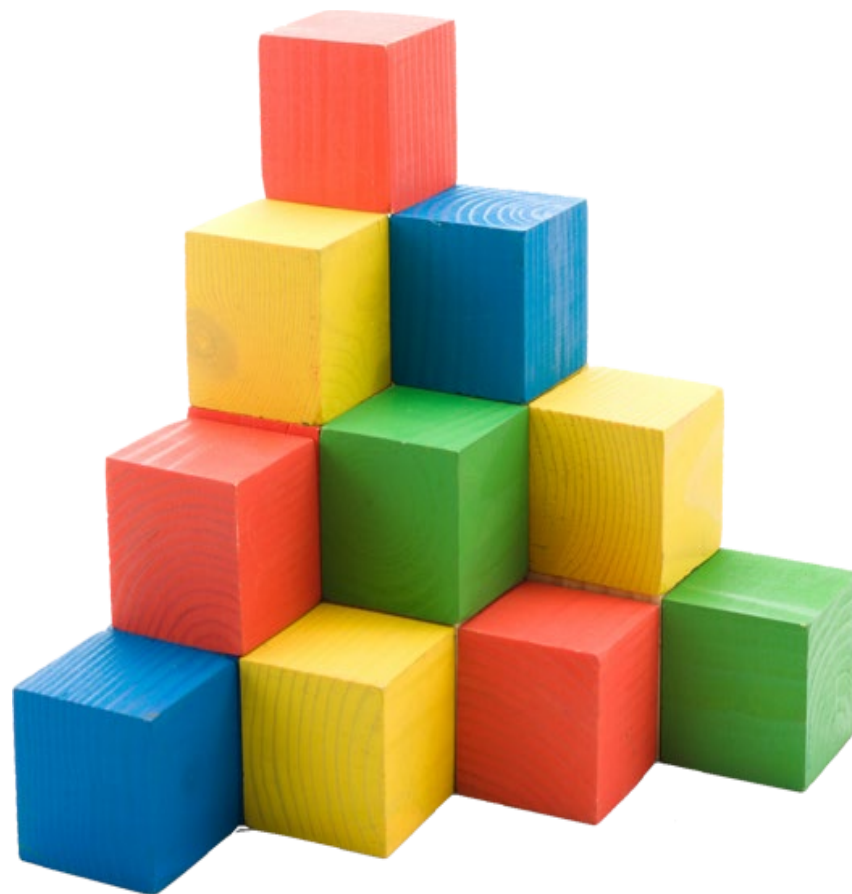
Member Agencies (Sample)

AIDS Project Los Angeles
Altamed Health Services
APLA Health
Bienestar Inc.
Black AIDS Institute
Center for Health Justice
Children's Hospital Los Angeles
Essential Access Health
Freemont High School Wellness Center
LA LGBT Center
LA County Department of Public Health
Los Angeles Unified School District
Mens Health Foundation
Minority AIDS Initiative
St. John's Well Child and Family Center
The Wall las Memorias
ViaCare
We Can Stop STD's

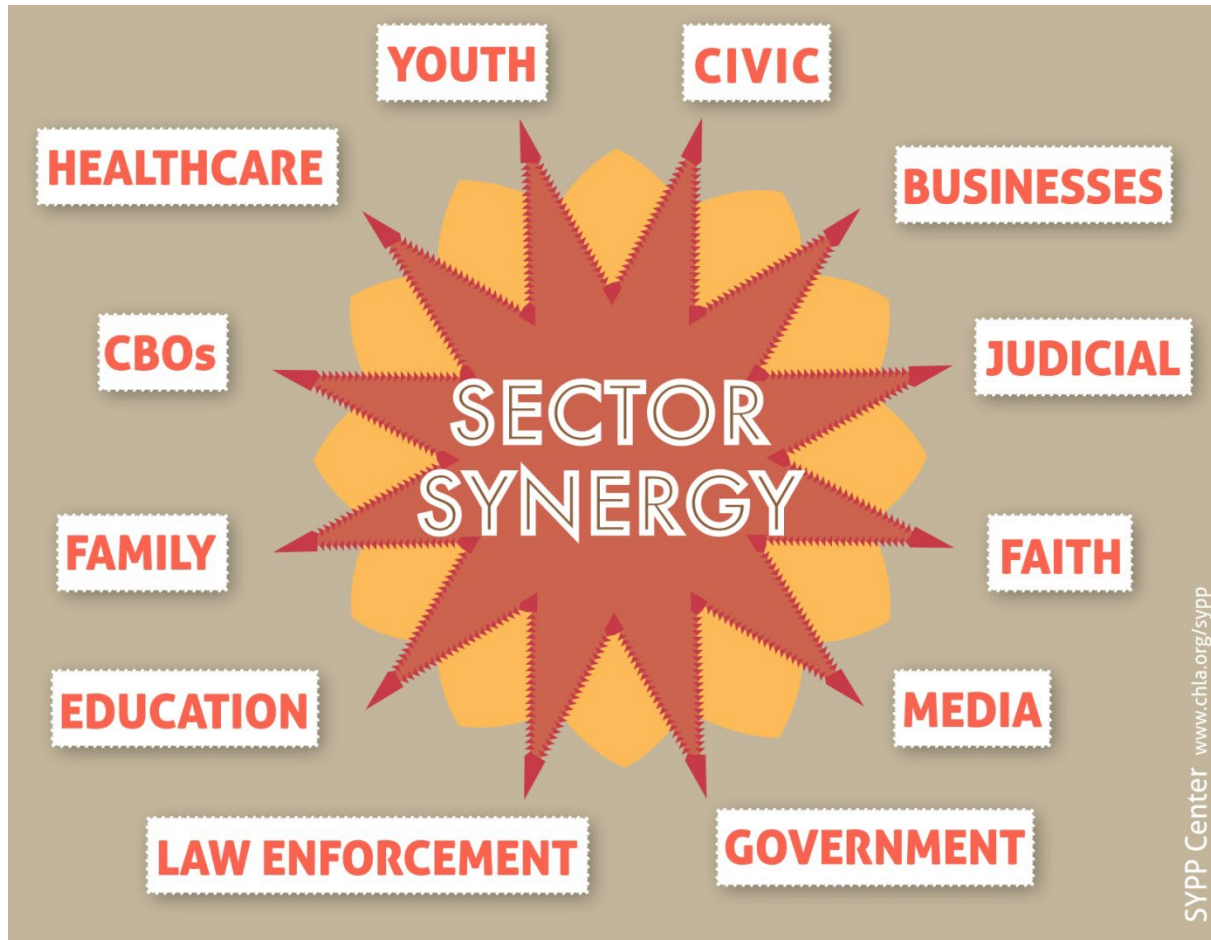
- **Impact:**
 - Developed a youth educational product around MPOX transmission.
 - Worked with DHSP in connecting partner agencies to MPOX vaccines services for their community events.
 - Developed Dress for Success event that provides mobile Sexual health services, workforce development and self-care management to youth in L.A county.
 - Supported community partners resource fairs by helping identify HIV testing services, PrEP/PEP resources and SDH resources.
 - Offered capacity building opportunities for partner agencies on various topics such as DoxyPEP, Youth engagement, Youth HIV/STI data surveillance and intergenerational partnerships.



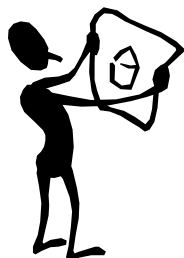
1. Membership
2. Strategic Planning
3. Structure
4. Values
5. Leadership
6. Promotion
7. Resources
8. Evaluation



1. Membership



2. Strategic Planning



V

• Vision

M

• Mission

O

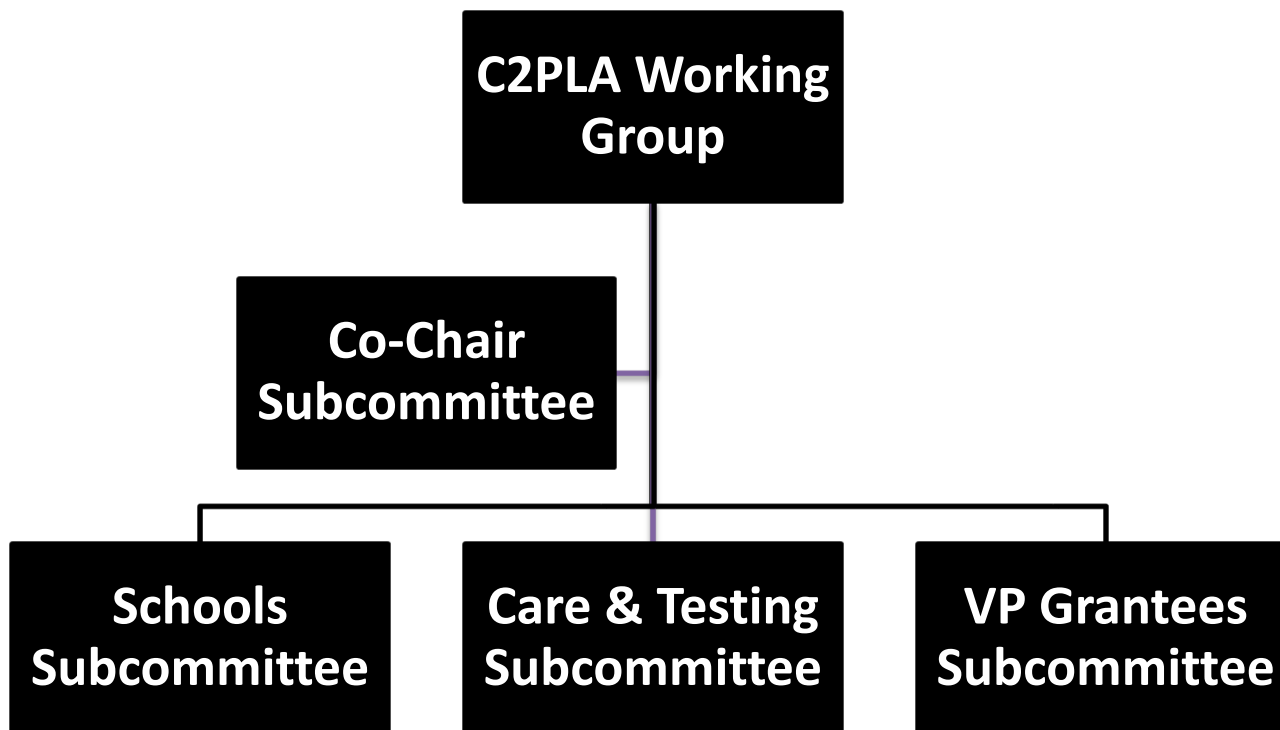
• Objectives

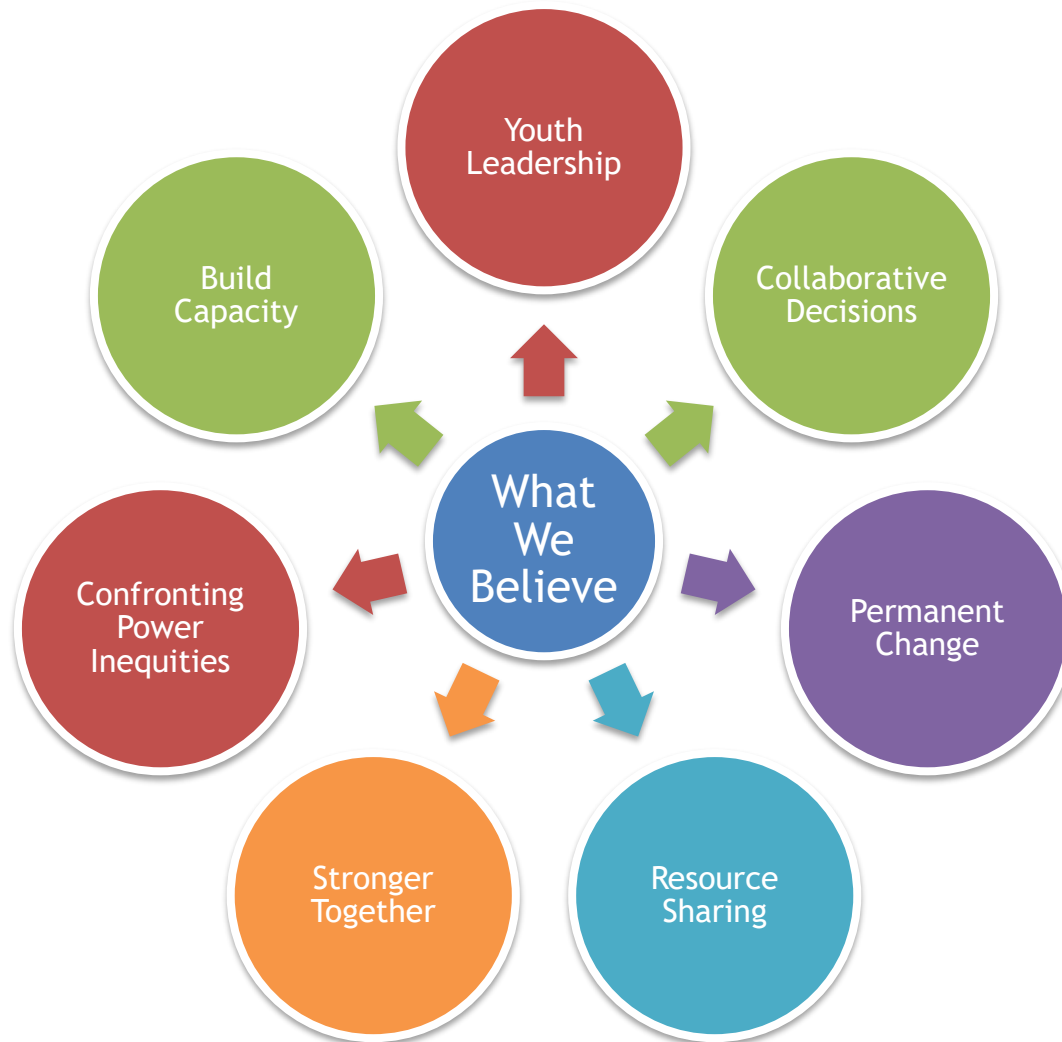
S

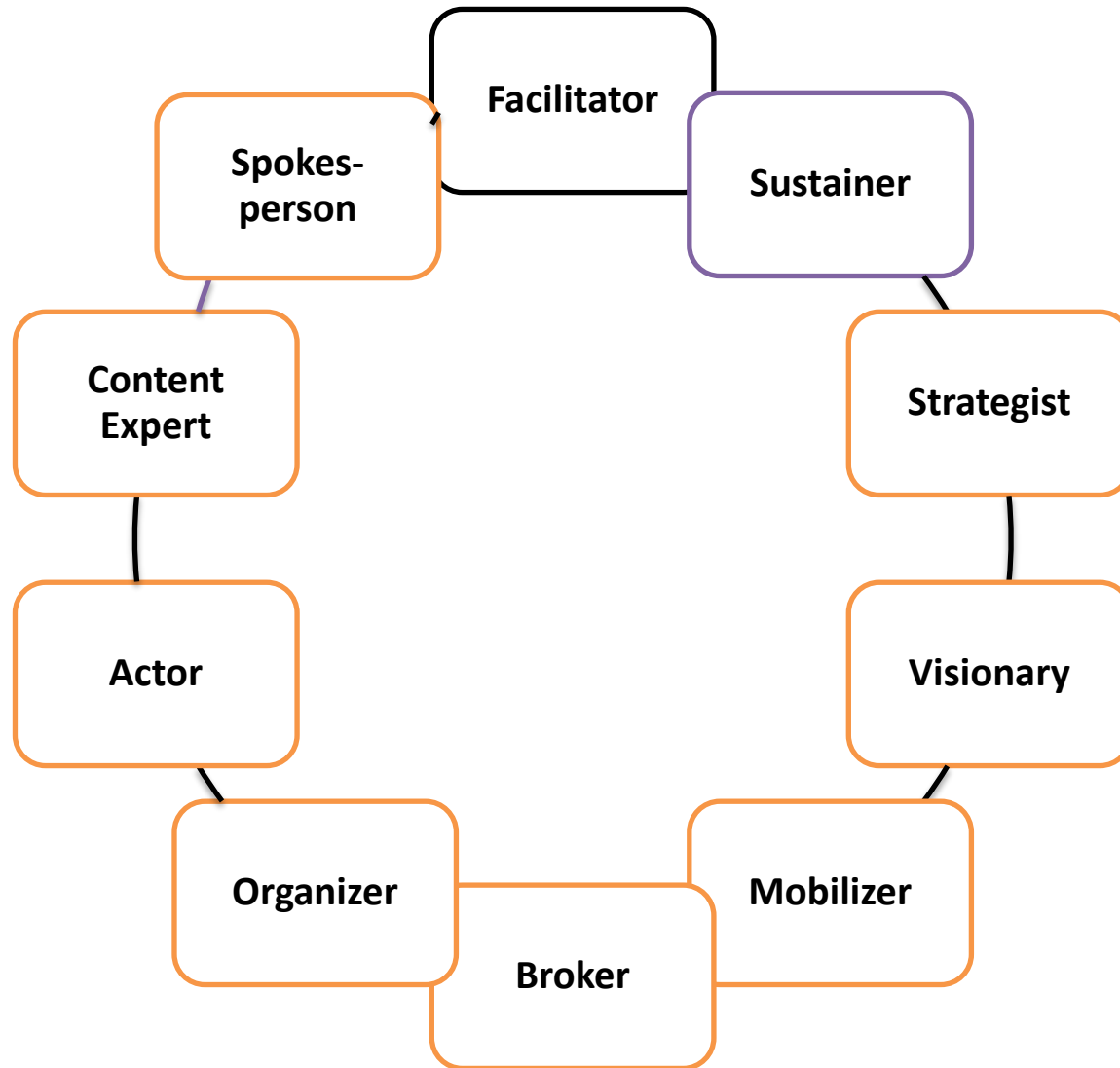
• Strategies

A

• Action Steps







6. Promotion/Celebrating Success

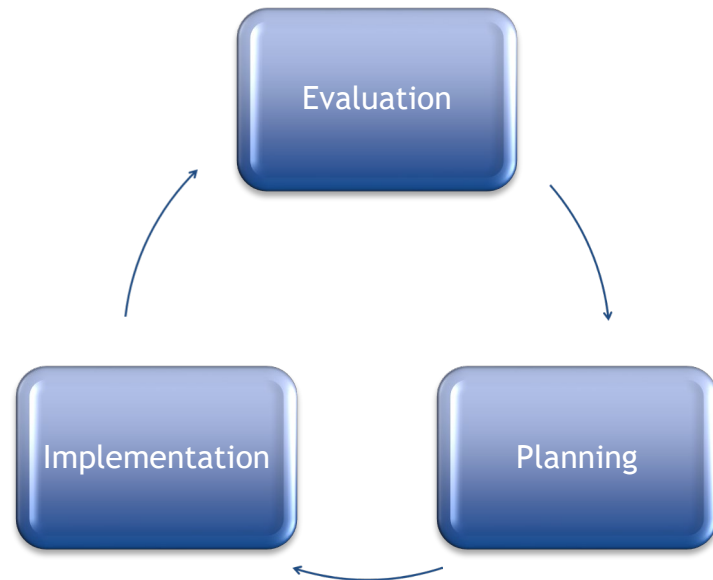
Credibility **Print Media**
Social Media
Twitter **Community updates**
SWAG
Marketing **Champion**
Publicity **Website**
Articles

What you need

- Supplies
- Space
- Personnel/time
- Relationships/Trust
- Refreshments
- Technology

How to get it

- Share
- Ask
- Earn
- Plan!



Healthy Coalition Questionnaire
SYPP Center at Children's Hospital Los Angeles

Please rate how much you agree or disagree with each statement.	Strongly Agree	Agree	Neutral	Disagree	Strongly Disagree
1. I have a clear understanding of what our coalition is trying to accomplish.	<input type="checkbox"/> 5	<input type="checkbox"/> 4	<input type="checkbox"/> 3	<input type="checkbox"/> 2	<input type="checkbox"/> 1
2. People in this coalition are dedicated to the idea that we can make this endeavor work.	<input type="checkbox"/> 5	<input type="checkbox"/> 4	<input type="checkbox"/> 3	<input type="checkbox"/> 2	<input type="checkbox"/> 1
3. What we are trying to accomplish with our coalition would be difficult for any single organization to accomplish by itself.	<input type="checkbox"/> 5	<input type="checkbox"/> 4	<input type="checkbox"/> 3	<input type="checkbox"/> 2	<input type="checkbox"/> 1
4. The people involved in our coalition represent a cross-section of those who have a stake in what we are	<input type="checkbox"/> 5	<input type="checkbox"/> 4	<input type="checkbox"/> 3	<input type="checkbox"/> 2	<input type="checkbox"/> 1

VISIONARY

- Generates innovative ideas and solutions
- Maintains the big picture and keeps coalition focused on the ultimate goal

15. Did you fill this role during the last period? Yes No

16. If not, would you like to fill this role? Yes No Maybe

STRATEGIST

- Translates idea

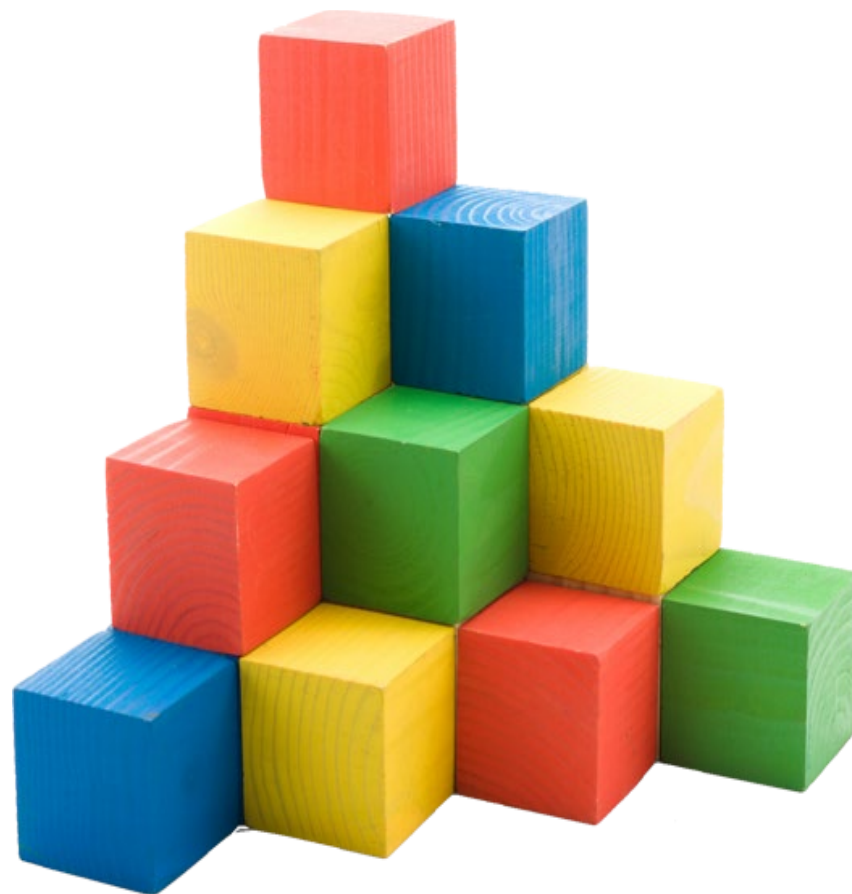
36. Who would you say led the coalition—whether officially or unofficially—during the last 3 months? That is, who significantly impacted the coalition's direction, work, and progress? **[Select one only]**

- One agency
- A small group of agencies (2 to 3)
- A broad group of agencies (4 or more)
- It varied
- Not sure

37. How effective was the leadership during the last 3 months? **[Select one only]**

- 5 Very effective
- 4 Effective
- 3 Neutral

1. Membership
2. Strategic Planning
3. Structure
4. Values
5. Leadership
6. Promotion
7. Resources
8. Evaluation



- Think about the Groundwater framework
- Addressing SDOH takes time, you need multiple strategies, and you can't do it alone.
- Coalitions are a mechanism to create lasting community change.
- Transformation takes time and includes both small steps and large leaps.
- Health care providers are critical partners in healthy coalitions.

Questions?