

2024 TRAINING SERIES

Commission on HIV (COH) Overview

March 26, 2024



LOS ANGELES COUNTY
COMMISSION ON HIV



Learning Objectives

Learn about the purpose of the COH, its ordinance and bylaws, and structure.

Learn about integrated HIV prevention and care community planning.

Why Community Planning?

Public process increases transparency and accountability



Diverse perspectives (populations, disciplines, and services)



Informed by personal and professional experiences



Opportunity for equitable access to information and to influence how services are prioritized and shaped

COH ORDINANCE

INTEGRATED HIV/STD PREVENTION & CARE PLANNING COUNCIL (PC)

- Commission (PC) governed by Los Angeles County Ordinance 03.29 http://lacounty-ca.elaws.us/code/coor_title3_ch3.29
- Formally became an integrated PC in 2013
- PC is federally required in order to receive Ryan White funds for HIV/AIDS services
- Housed as an independent commission within the Executive Office of the Board of Supervisors (BOS) of the County of Los Angeles.

COH ORDINANCE

INTEGRATED HIV/STD PREVENTION & CARE PLANNING COUNCIL (PC)

- Advise Division of HIV and STD Programs (DHSP) on how to prevent and reduce HIV infections via the integrated HIV plan (aka Comprehensive HIV Plan or CHP)
- 51 voting members; 1/3 (33%) must be unaffiliated consumers (UC)
- UC: PLWH and currently using a Ryan White (RW) Part A – funded service(s) and not employed by an agency receiving RW Part A funds.



LOS ANGELES COUNTY COMMISSION ON HIV

<http://hiv.lacounty.gov>

EXECUTIVE OFFICE



BOARD OF SUPERVISORS
COUNTY OF LOS ANGELES

The Commission on HIV (COH) serves as the local planning council for the planning, allocation, coordination and delivery of HIV/AIDS and Sexually Transmitted Diseases (STD)



MEMBERS

51

Nominated by the
Commission on HIV.



APPOINTMENT

By Board
of Supervisors.



TERM OF OFFICE*

2 years

Serve at the pleasure
of the Board.



FORM 700

May be subject
to file.



QUALIFICATIONS*

Recommended entities shall forward candidates to the Commission for membership consideration.

Recommending entities and the nominating body are strongly encouraged to nominate candidates living with HIV disease or members of populations disproportionately affected by HIV/ STDs.



INCENTIVES*

Gift cards or stipends, and reimbursements for mileage, transportation, childcare are available only to unaffiliated consumers.

No more than \$150 per month as determined by the Commission policy.



DUTIES*

The Commission on HIV is tasked with planning, allocation, coordination and delivery of HIV/AIDS and Sexually Transmitted Disease(s) (STDs) services in Los Angeles County.

Consistent with Section 2602(b)(4) (42 U.S.C. § 300ff-12) of Ryan White legislation, HRSA guidance, and requirements of the CDC HIV Planning Guidance.



MEETINGS*

At least ten (10) times per year, plus monthly Committee meetings.

Additional time commitment may be required.

BOARD OF SUPERVISORS (BOS)



Caucuses & Task Forces

Aging Caucus, Black Caucus, Consumer Caucus, Transgender Caucus, Women's Caucus, Bylaws Review Taskforce

DHSP and COH Roles and Responsibilities

- ❖ DHSP and COH = two independent entities, both with legislative authority and roles
- ❖ Some roles belong to one entity and some are shared
- ❖ Effectiveness requires clear understanding of the roles and responsibilities of each entity, *plus*:
 - ✓ Communications, information sharing, and collaboration between the recipient, COH, support staff, and community partners
 - ✓ Ongoing consumer and community involvement

COH, DHSP, Roles & Responsibilities

Task	Committee	DHSP	COH
Carry Out Needs Assessment	PP&A	X	X
Do Comprehensive Planning	PP&A	X	X
Set Priorities*	PP&A		X
Allocate Resources*	PP&A		X
Manage Procurement		X	
Monitor Contracts		X	
Evaluate Effectiveness of Planning Activities	PP&A	X	X
Evaluate Effectiveness of Care Strategies	SBP	X	X
Do Quality Management		X	[Standards Committee Involvement]
Assess the Efficiency of the Administrative Mechanism*	Operations		X
Member Recruitment, Retention and Training	Operations		X

* Sole responsibility of RWHAP Part A Planning Councils

Duties of the Commission (COH)

Duties

- A. Develop a comprehensive HIV plan** that is based on assessment of service needs and gaps and includes a defined continuum of HIV services
- Monitor plan implementation
 - Assess its effectiveness
 - Work in collaboration with DHSP to regularly update the plan

Duties

B. Develop standards of care for the organization and delivery of HIV care, treatment and prevention services



Duties

C. Establish priorities and allocations of Ryan White Part A & B and CDC prevention funding in percentage to various services

- **Review the grantee's (DHSP) allocation and expenditure of funds** by service category or activity for consistency with the Commission's established priorities, allocations and Comprehensive HIV Plan
- **Provide and monitor directives** to the grantee on how best to meet the need and other factors that further instruct service delivery planning and implementation
- **Provide assurances to the Board of Supervisors and HRSA** verifying that service category allocations and expenditures are consistent with the Commission's established priorities, allocations and Comprehensive HIV Plan

Duties

D. Evaluate service effectiveness and assess the efficiency of the administrative mechanism with particular attention to outcome evaluation, cost effectiveness, rapid disbursement of funds, compliance with Commission priorities and allocations, and other factors relevant to the effective and efficient operation of the local EMA's delivery of HIV services

Duties

E. Plan and develop HIV and public health service responses

to address the frequency of HIV infection concurrent with STDs and other comorbidities

- Deploy best practices and innovative models in the County's STD clinics and related health centers
- Strategize mechanisms for adapting models to non-HIV-specific platforms for expanded STD and co-morbidity response

Duties

F. Study, advise and recommend to the Board of Supervisors, the grantee and other departments' policies and other actions/decisions on matters related to HIV



Duties

- G. Inform, educate, and disseminate information** to consumers, specified target populations, providers, the general public, and HIV and health service policy makers **to build knowledge and capacity for HIV prevention, care, and treatment**
- Actively engage individuals and entities concerned about HIV

Duties

- H. Provide an annual report to the Board of Supervisors**, no later than June 30th, **describing Los Angeles County's progress in ending HIV as a threat to the health and welfare of Los Angeles County residents**, with indicators determined by the Commission in collaboration with DHSP
- Make other reports, as necessary, to the Board of Supervisors, the grantee and other departments on HIV-related matters referred for review by the Board of Supervisors, grantee or other departments

Duties

- I. Act as the planning body for all HIV programs in DPH or funded by the County**



Duties

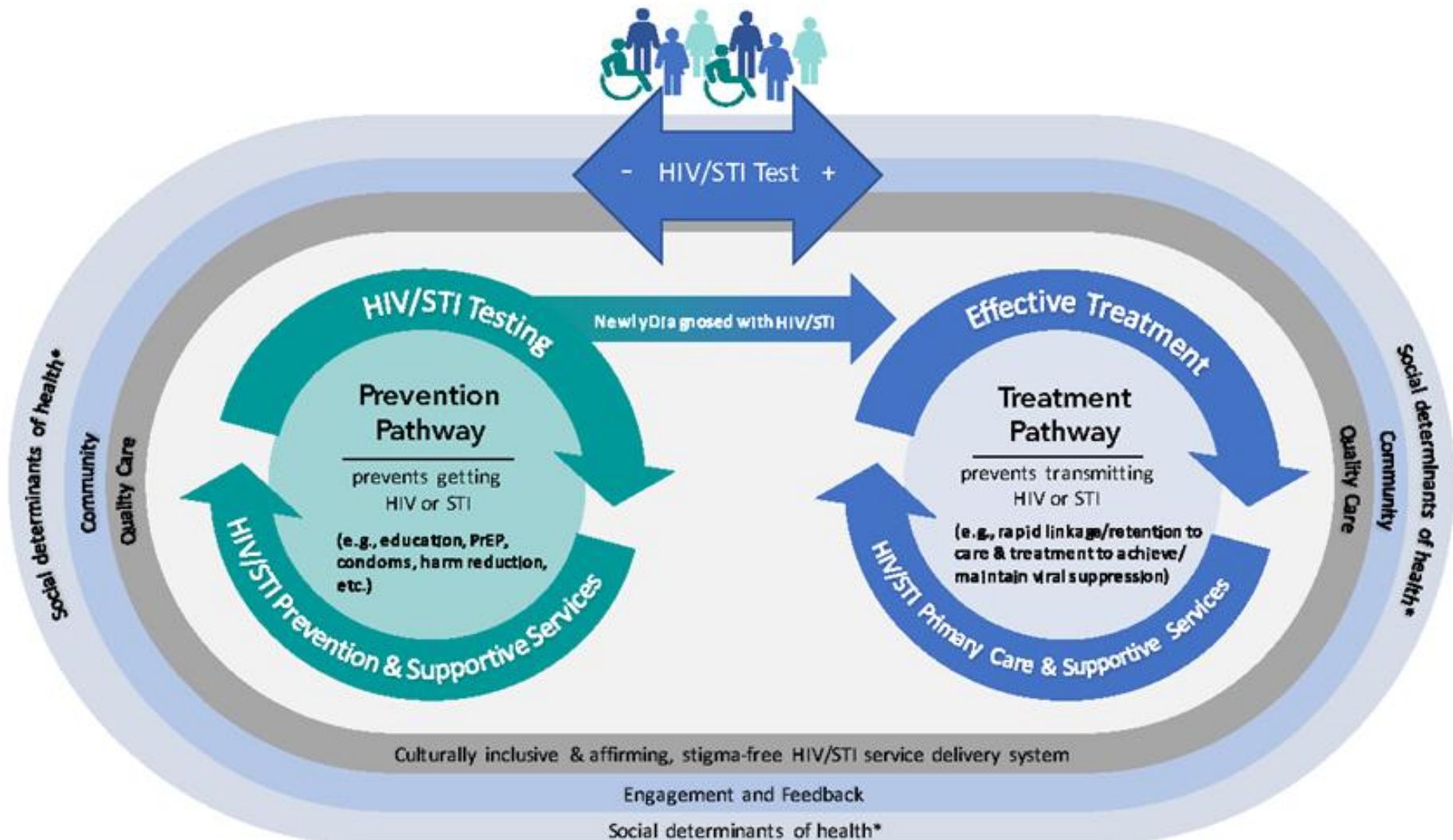
- J. Make recommendations to the Board of Supervisors, the grantee and other departments concerning the allocation and expenditure of funding** other than Ryan White Part A and B and CDC prevention funds expended by the grantee and the County **for the provision of HIV-related services.**

COMPREHENSIVE HIV PLAN (CHP)

<https://HIV.lacounty.gov/our-work>

- Serves as a jurisdictional HIV/AIDS Strategy
- Living document and roadmap to guide HIV prevention and care planning throughout the year
- Addresses local needs and opportunities for improvement
- Emphasizes collaboration and coordination

Status Neutral HIV and STI Service Delivery System



Q & A



510 S. Vermont Ave, 14th Floor,
Los Angeles, CA 90020



hivcomm@lachiv.org



213.738.2816

Facebook: @HIVCommissionLA

Twitter: @HIVCommissionLA

Instagram: @HIVCommLA

<https://HIV.lacounty.gov/>



LOS ANGELES COUNTY
COMMISSION ON HIV

