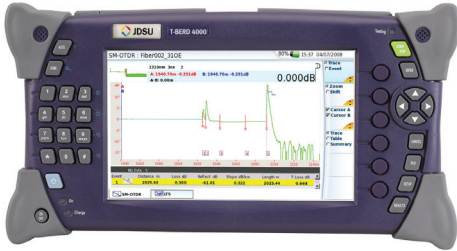


T-BERD®/MTS-4000 Platform

Multiple Services Test Platform



Key Benefits

- Cost-effective, compact handheld platform
- Multilayer (physical to services layer) network solution
- Two field-replaceable modules increases scalability
- Flexible connectivity for fast data transfer: Two 2.0 USB and up to 1 Gbps Ethernet ports

Key Features

- Dual-modular handheld platform
- Large 7-inch display (touch screen option)
- Comprehensive connection checker functionality with built-in VFL, power meter, and scope options
- Flexible connectivity including USB, high-speed 1 G Ethernet, WiFi, and Bluetooth interfaces
- Automated test and data reporting capability
- Integrated web browser

Applications

- Test copper and triple play
- Test physical to services layers

Access network technologies are evolving quickly to keep pace with consumer demand for high-bandwidth services. Offerings such as high-speed Internet access, high-definition TV, and video on demand are pushing network performance requirements to new levels and increase complexity for technicians who turn up, troubleshoot, and maintain services. Therefore, service providers must equip technicians with a single, scalable easy-to-use test tool that addresses a wide range of test applications quickly and accurately under all field conditions.

The T-BERD/MTS-4000 is the one tool providers and technicians can both rely on, because it provides:

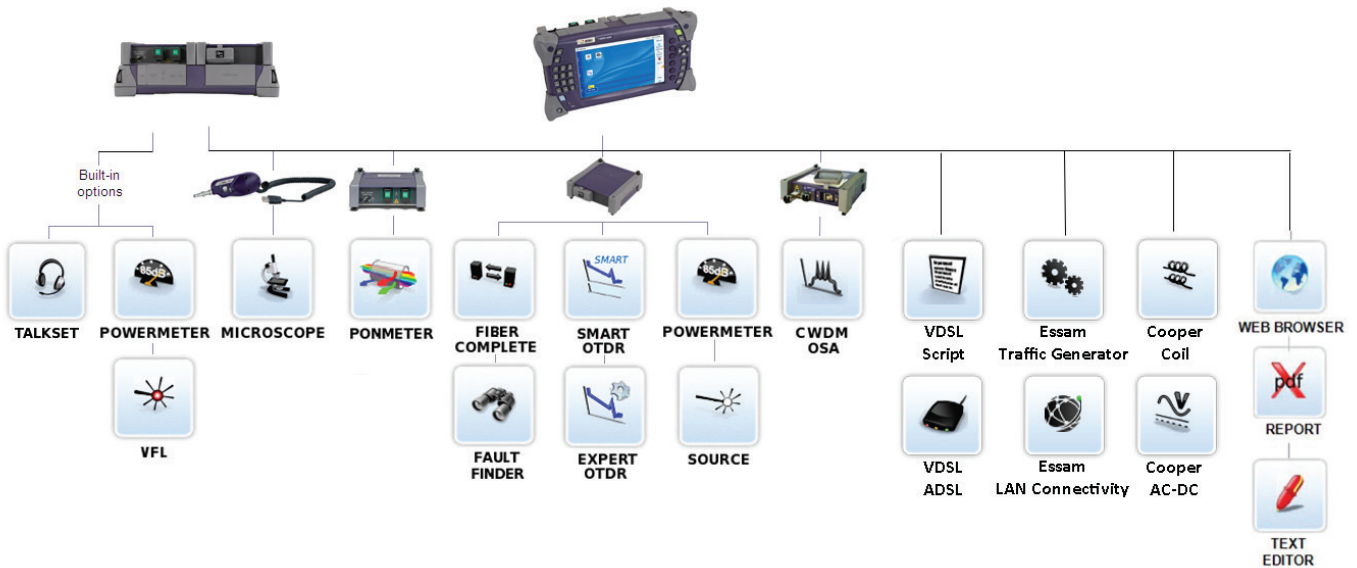
- The industry's first single handheld test platform with advanced fiber, copper, and triple-play testing capabilities.
- A multifunctional, scalable solution with several test applications that enable a quick return on investment.
- Multilayer testing to accelerate turn-up and installation.
- An easy-to-use, icon-based graphical user interface (GUI) for testing with minimal training.





Test Feature Overview

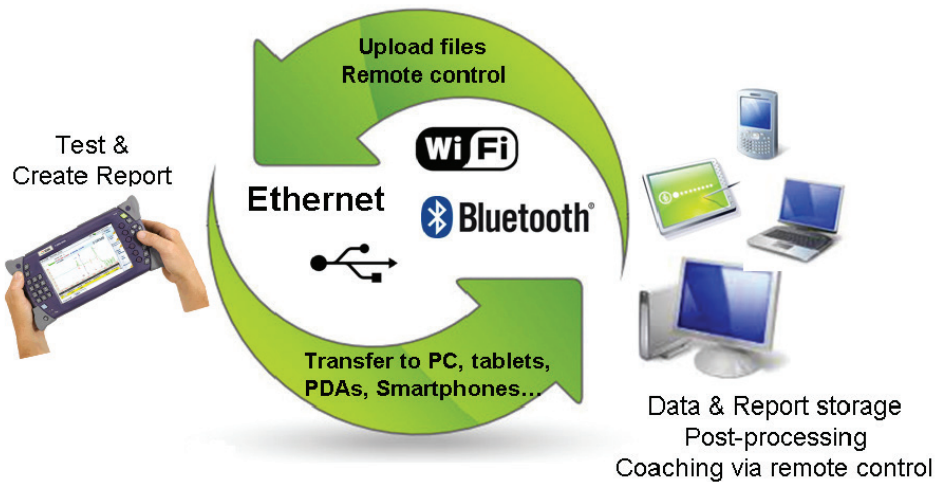
The T-BERD/MTS-4000 is a highly integrated platform with two module slots, a large 7-inch color screen (with a touch screen option), a high-capacity Lithium ion battery, an optional video inspection scope (through universal serial bus [USB] port), and optional built-in optical test functions, such as a visual fault locator (VFL), power meter, and optional WiFi/Bluetooth interface.



Fiber optics application modules used with the T-BERD/MTS-4000 can also be used with the T-BERD/MTS-2000 and the two products are interoperable

Broadband Power Meter

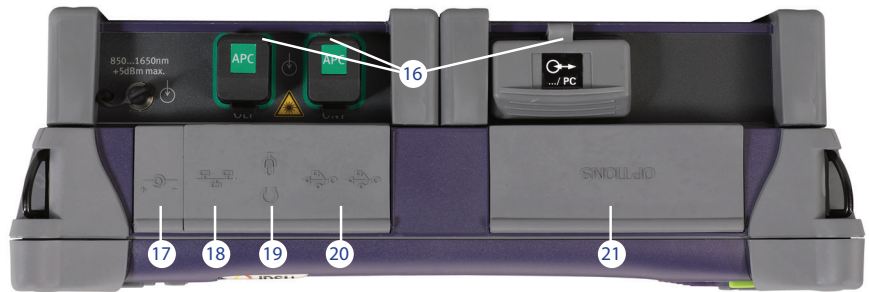
The T-BERD/MTS-4000 comes with optional built-in power meters so technicians can easily verify signal presence. The large screen T-BERD/MTS-4000 displays power values in large fonts for immediate results interpretation.



3

Install and maintain Access/FTTx networks and triple-play services

- 1 7-inch high-visibility TFT color screen
- 2 Home page
- 3 Numerical keypad
- 4 On indicator
- 5 On/off
- 6 Charge Indicator
- 7 Soft keys
- 8 Results page
- 9 Setup menu home page
- 10 File menu
- 11 Cancel
- 12 Direction & validation keys
- 13 Start/stop
- 14 Loud speaker
- 15 Testing indicator
- 16 Two interchangeable module fields
- 17 AC input
- 18 High-speed Ethernet
- 19 Headset
- 20 Two 2.0 USB ports
- 21 Optical (VFL and power meter) options
- 22 Battery



Specifications (Typical 25°C)
Technical
Display

TFT color, 7-in, LCD 800 x 480, high visibility for outdoors
 Touchscreen, TFT color, 7-in, LCD 800 x 480, high visibility for outdoors

Storage and I/O Interfaces

Internal memory 32MB (1000 test results)
 Extended memory (optional) Minimum 1 GB (optional)
 2x USB2.0, 1x RJ45 Ethernet (up to 1 Gbps)
 WiFi Standard IEEE 802.11 b/g
 Bluetooth Class 2, up to 10 m range
 Audio interface 2.5 mm jack connector
 Ethernet 10/100/1000 MHz full-half duplex

Power Supply

Battery type Standard removable Li Ion batteries
 AC/DC adapter Input 100–250 V, 50–60 Hz
 Output 12–15 V DC/3.7 A
 Electrical safety EN 60950 Compliant
 Operation time Up to 11 hours with standard display
 Telcordia GR-196-CORE

Size and Weight

Mainframe with two modules and battery
 (W x H x D) 260 x 135 x 90 mm
 (10.2 x 5.3 x 3.5 in)
 Mainframe only (with battery) 1.4 kg (3 lb)
 Mainframe with one module (with battery) <2 kg (<4.35 lb)

Environmental

Operating temperature range –20 to +50°C
 (no option) (–4 to 122°F)
 Operating temperature range 0 to +40°C
 (all options) (32 to 104°F)
 Storage temperature range –20 to +60°C
 (–4 to 140°F)
 Humidity, noncondensing 95%

Base Unit Optical Interfaces (optional)
Power Meter

Power level +10 to –60 dBm
 Calibrated wavelengths 850, 1310, and 1550 nm
 Connector type Universal push/pull (UPP)

Visual Fault Locator (VFL)

Wavelength 635 nm ±15 nm
 Output power level <1 mW
 Laser safety Class 2 laser
 Connector type Universal push/pull (UPP)

Quick Capture Probe Kit (via USB)

Magnification 200X and 400X
 Interface through the USB port
 Tips FC, SC, SC-APC, LC, U25, U25MA, U12

For more information on module specifications, refer to the data sheet for each module

Ordering Information
Base Instrument

Part Number	Description
TB4000, M4000	T-BERD/MTS-4000 Platform with high-visibility color display and battery pack
TB4000T, M4000T	T-BERD/MTS-4000 Platform with high-visibility touchscreen color display and battery pack
40EXTMEM	Extended memory (1 GB)
40VFL	VFL with 2.5 mm UPP
40PM	Optical power meter with UPP
40HPPM	Optical high-power power meter with UPP
40WIFIBLU	WiFi/Bluetooth interface

Accessories

EDFSCOPESKI	USB 2.0 Digital Video Scope Kit (P5000i), includes 7 tips and soft case
E60Lilon	Additional Li Ion rechargeable battery
E40GLOVE	Glove soft case for T-BERD/MTS-4000 platform
E40SCASE1	Soft case for T-BERD/MTS-2000/4000
E40SMODCASE1	Soft case for small T-BERD/MTS-4000 module
E40LMODCASE1	Soft case for long T-BERD/MTS-4000 module
HCASE6	T-BERD/MTS-4000 hard carrying case

Test & Measurement Regional Sales

NORTH AMERICA TOLL FREE: 1 855 ASK-JDSU 1 855 275-5378	LATIN AMERICA TEL: +1 954 688 5660 FAX: +1 954 345 4668	ASIA PACIFIC TEL: +852 2892 0990 FAX: +852 2892 0770	EMEA TEL: +49 7121 86 2222 FAX: +49 7121 86 1222	www.jdsu.com/test
---	--	---	---	--