

# GROUND RESISTANCE TESTERS

## MULTI-FUNCTION

**MODEL 6472**



Used under difficult conditions such as the presence of high stray currents that normally affect accuracy



cover closed



The Model 6472 provides an automated way to measure the value of the earth/ground using the Fall-of-Potential method and storing measurements.

## TEST KITS

### 6472 METER

300ft Kit: Catalog #2135.53  
500ft Kit: Catalog #2135.54 (shown)  
Refer to page 40 for Model 6472 Kit descriptions  
Catalog #2135.35, #2135.36 & #2135.37



## ACCESSORIES

### MN82 CURRENT PROBE (2MA TO 10ARMS)

Catalog #2135.71 (optional)



### SR182 CURRENT PROBE (0.5MA TO 40ARMS)

Catalog #2135.72 (optional)



### REEL CADDY

Catalog #2135.85 (optional)  
Set of two, for use with ground kit spools



## SPECIFICATIONS

MODEL	6472
<b>ELECTRICAL</b>	
<b>3-Point Measurement</b>	
Range (Auto-Ranging)	0.09Ω to 99.9kΩ
Resolution	0.01 to 100Ω
Test Voltage	Nominal 10, 16, 32 or 60Vrms user selectable
Resistance Measurement Frequency	41 to 5078Hz automatic or user selectable
Test Current	Up to 250mA
Accuracy	±2% of Reading + 1ct @ 128Hz
<b>2 Clamp Measurement</b>	
Range	0.1 to 500Ω
Resolution	0.01 to 1Ω
Measurement Frequency	Auto: 1611Hz Manual: 128Hz-1367Hz-1611Hz-1758Hz
<b>Soil Resistivity 4-Point Measurement</b>	
Test Method	Wenner or Schlumberger selectable with automatic calculation of test results in Ω-meters
Range (Auto-Ranging)	0.01 to 99.99kΩ; P max: 999kΩm
Resolution	0.01 to 100Ω
Test Voltage	16 or 32V user selectable
Frequency	From 41 to 128Hz selectable
<b>External Voltage Measurement</b>	
Range (Auto-Ranging)	0.1 to 65.0VAc/dc - DC to 440Hz
Accuracy	±2% of Reading + 1ct
<b>Resistance Measurement (Bond Testing)</b>	
Measurement Type	2-Pole (with lead resistance compensation) or 4-Pole (Kelvin sensing) user selectable
Range (Auto-Ranging)	2-Pole 0.02Ω to 99.99kΩ; 4-Pole 0.02Ω to 99.99kΩ
Accuracy	±2% of Reading + 2cts
Test Voltage	16Vdc (+, - or auto polarity)
Test Current	Up to 250mA max
<b>Data Storage</b>	
Memory Capacity	512 test results (64KB)
Power Source	9.6V rechargeable battery pack (included)
Recharging Source	110/220V, 50/60Hz external charger with 18Vdc, 1.9A output

## PRODUCT INCLUDES

Meter, carrying bag, 110/240V power adapter with US power cord, optical USB cable, rechargeable NiMH battery pack, DataView® software, ground tester workbook and user manual.

# GROUND RESISTANCE TESTERS

## MULTI-FUNCTION

### Large Functional Displays

#### FEATURES

Ground Integrity® Measurement

Ground Resistance testing using the 2 clamp method (no auxiliary rods needed)

2- and 4-Point Bond Resistance/Continuity measurement (DC Resistance) with automatic polarity reversal

3-Point Fall-of-Potential measurement with manual or automatic frequency selection

4-Point Soil Resistivity measurement with automatic calculation of Rho (r) and user selection of the Wenner or Schlumberger test method

3-Point Earth Coupling measurement

Manual and Automatic frequency scan from 41 to 5078 Hz for optimum test accuracy in electrically noisy environments

Selectable test voltage of 16 or 32V up to 250mA of test current

Auto Power OFF feature

Automatic recognition of all electrode connections and their resistance value

Stores up to 512 complete test results in internal memory

Display with automatic backlight when entering a function

Optically isolated USB communication cable included

Rechargeable NiMH batteries from wall charger or vehicle power

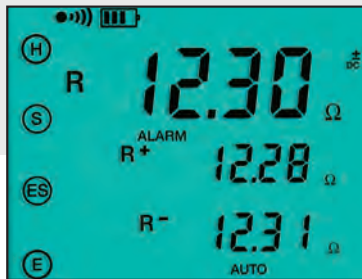
Rugged dustproof and water-resistant field case - IP53 rated in closed position

Grounding standards IEC 61557 parts 4 and 5 compliant

Includes DataView® software for set up, data retrieval, real-time display, analysis, report generation and system configuration

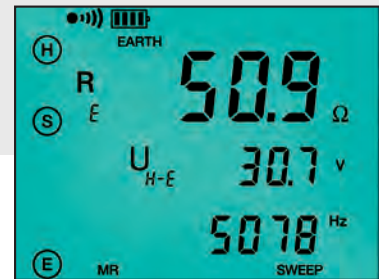
Can also be used for continuity tests on bonding

#### 4-POINT BOND TEST



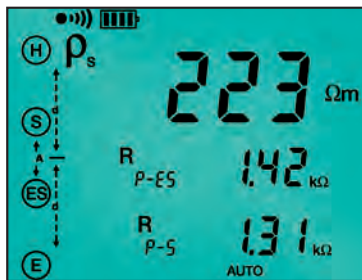
The 4-Point Bond test shows lead connections, bond resistance test results, test voltage and current.

#### 3-POINT FALL-OF-POTENTIAL TEST



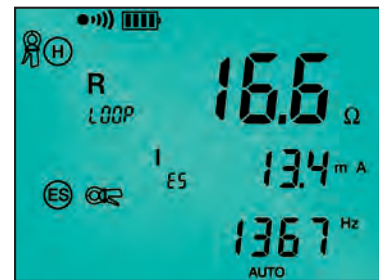
The 3-Point Fall-of-Potential test displays test lead connection, grounding rod resistance and test electrode resistances.

#### SCHLUMBERGER TEST



The Schlumberger test displays test lead connection, soil resistivity (ρ) test results and electrode spacing.

#### TWO CLAMP TEST



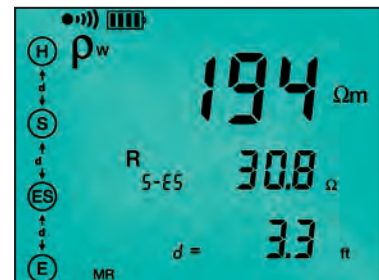
The 2 Clamp method displays clamp connection resistance, test current and frequency.

#### DATA STORAGE



Memory Recall displays test results stored at a specific memory location.

#### WENNER TEST



The Wenner test displays test lead connection, soil resistivity (ρ) test results, electrode spacing and resistance.

CATALOG NO.	DESCRIPTION
2135.48	Ground Resistance Tester Model 6471 (2-Point, 3-Point, 4-Point, Bond Test, Digital, Rechargeable Battery, DataView® software) <b>SR182 probes not included</b>
2135.49	Ground Resistance Tester Model 6471 (set of two SR182 current probes, 2-Point, 3-Point, 4-Point, Bond Test, Digital, Rechargeable Battery, DataView® software)
2135.50	Ground Resistance Tester Model 6471 Kit - 300ft (Catalog #2135.49 and Catalog #2135.36)
2135.51	Ground Resistance Tester Model 6472 (2-Point, 3-Point, 4-Point, Bond Test, Digital, Rechargeable Battery, DataView® software)
2135.53	Ground Resistance Tester Model 6472 Kit - 300ft (Model 6472 and Catalog #2135.36)
2135.54	Ground Resistance Tester Model 6472 Kit - 500ft (Model 6472 and Catalog #2135.37)
2135.60	Ground Resistance Tester Model 6471 Kit - 300ft (Catalog #2135.48 and Catalog #2135.36) w/o SR
2135.61	Ground Resistance Tester Model 6471 Kit - 500ft (Catalog #2135.48 and Catalog #2135.37) w/o SR
<b>Accessories/Replacement - available on website store from <a href="http://www.aemc.com">www.aemc.com</a></b>	
2135.71*	AC Current Probe Model MN82 for use with Model 6471 and 6472
2135.72*	AC Current Probe Model SR182 for use with Model 6471 and 6472
2135.85	Caddy - Set of 2, Reel Caddy for use w/Ground Kit Spools

\*2 probes required for two clamp testing method.

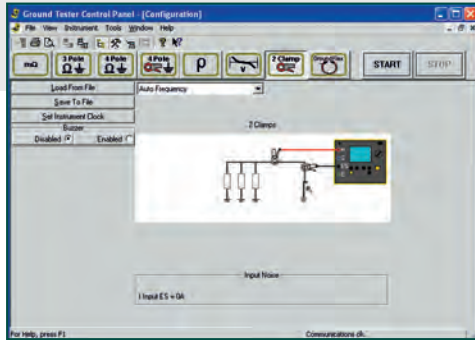
# GROUND RESISTANCE TESTERS

## MULTI-FUNCTION

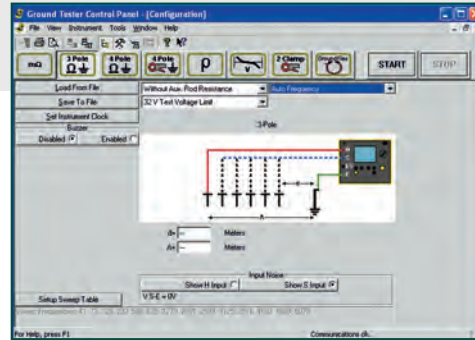
### GROUND TESTERS MODELS 6471 & 6472

#### Typical DataView® Functional Displays

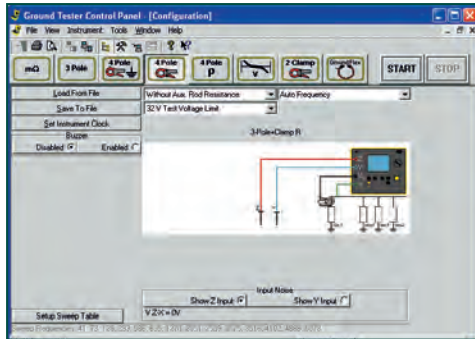
2 CLAMP METHOD SETUP



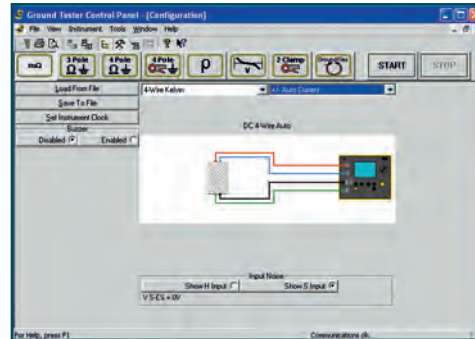
FALL-OF-POTENTIAL, STEP-TOUCH POTENTIAL



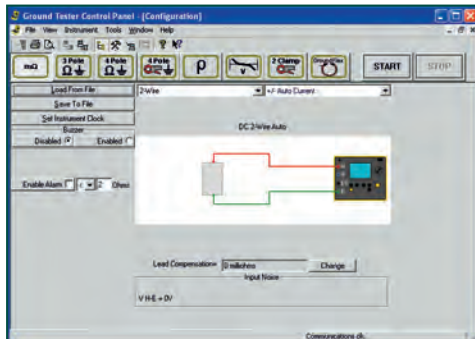
SELECTIVE 3-POINT TESTING OF MULTIPLE RODS



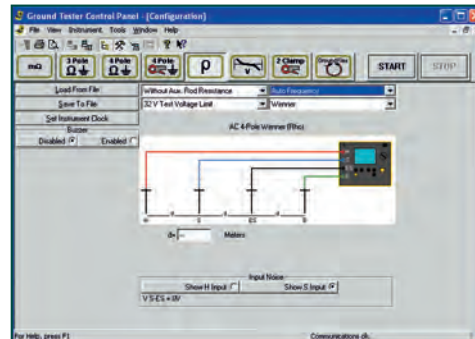
4-POINT BONDING FOR VERY LOW RESISTANCE



BONDING



SOIL RESISTIVITY



## OPTIONAL KITS

### 150FT KIT

Catalog #2135.35  
Test Kit for 3-Point testing includes carrying bag, two 150ft color-coded leads on spools (red/blue), two 5ft color-coded leads (red/blue), one 30ft lead (green), two 14.5" T-shaped auxiliary ground electrodes, one set of five spaded lugs and 100ft tape measure.



### 300FT KIT

Catalog #2135.36  
Test Kit for 4-Point testing includes carrying bag, two 300ft color-coded leads on spools (red/blue), two 5ft color-coded leads (red/blue), two 100ft color-coded leads (green and black), four 14.5" T-shaped auxiliary ground electrodes, one set of five spaded lugs and 100ft tape measure.



### 500FT KIT

Catalog #2135.37  
Test Kit for 4-Point testing includes carrying bag, two 500ft color-coded leads on spools (red/blue), two 100ft color-coded leads (green and black), one 30ft lead (green), four 14.5" T-shaped auxiliary ground electrodes, one set of five spaded lugs and 100ft tape measure.



# GROUND RESISTANCE TESTERS

## SELECTION CHART

AEMC MODEL NUMBER	AEMC CATALOG NUMBER	RESISTANCE RANGE	POWER SOURCE	2 POINT TEST	3 POINT TEST	4 POINT/ SELECTIVE	SOIL RESISTIVITY TEST	EARTH COUPLING	2 CLAMP	BONDING	DISPLAY	VOLTAGE INDICATION	INDUCTANCE INDICATION	SWEEP FREQUENCY
6416	2141.01	0.01 to 1500Ω	Battery	Clamp-On Ground Resistance Tester w/Alarm & Memory				-	-	✓**	Digital	Voltage Displayed (noise icon, buzzer)	✓	-
6417	2141.02	0.01 to 1500Ω	Battery	Clamp-On Ground Resistance Tester w/Alarm, Memory & Bluetooth communication				-	-	✓**	Digital	Voltage Displayed (noise icon, buzzer)	✓	-
Groundflex® Field Kit Model 6474	2136.03	0.001Ω to 99.99kΩ	Rechargeable Battery	-	✓	✓	✓	✓	-	✓	Digital	Value Displayed	-	✓
6471 (SR182 probes not included)	2135.48	0.01 to 99.99kΩ	Rechargeable Battery											
6471	2135.49			✓	✓	✓	✓	✓	✓	✓	Digital	Value Displayed	-	-
6471 Kit 300FT	2135.50													
6472	2135.51	0.01 to 99.99kΩ	Rechargeable Battery											
6472 Kit 300FT	2135.53			✓	✓	✓	✓	✓	✓	✓	Digital	Value Displayed	-	✓
6472 Kit 500FT	2135.54													
4620	2130.43	0.0 to 1999Ω	Battery	✓	✓	-	✓	-	-	-	Digital	LED/Buzzer	-	-
4620 Kit 150FT	2135.19						✓*							
4620 Kit 300FT	2135.20	0.0 to 2000Ω	Battery	✓	✓	-	✓	-	-	-	Digital	LED/Buzzer	-	-
4620 Kit 500FT	2135.21	0.0 to 1999Ω												
4630	2130.44	0.0 to 1999Ω	Rechargeable Battery				✓							
4630 Kit 150FT	2135.22						✓*							
4630 Kit 300FT	2135.23					✓								
4630 Kit 500FT	2135.24													

\* Performing soil resistivity tests with this kit requires two additional auxiliary electrodes not supplied in the 150ft kit and one additional test lead.

\*\* Clamp-on Ground Resistance Tester can measure system continuity inclusive of all bonding points.