



# Agilent Technologies Infiniium 8000 Series Oscilloscopes

Superior mixed-signal analysis and debug

Data Sheet



*Anticipate — Accelerate — Achieve*



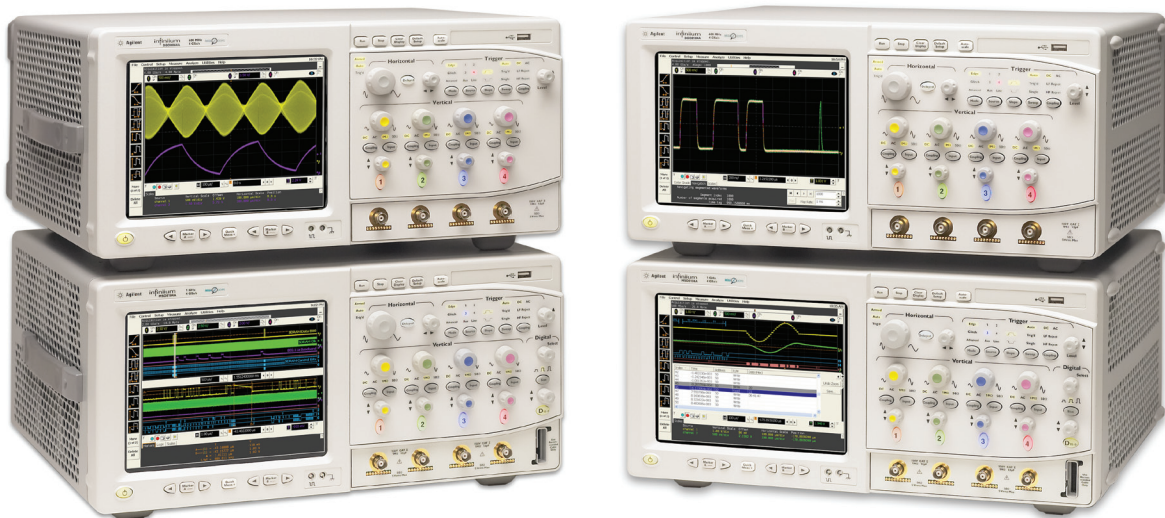
**Agilent Technologies**

## If you haven't purchased an Agilent scope lately, why should you consider one now?

If you're like most engineers, you never know what your next project will demand from you. You need an oscilloscope that can adapt to a wide variety of debug and test challenges.

We built in the powerful features you'd expect in any Infiniium scope. Then we engineered the scope for superior mixed-signal debug and analysis, so it would be a flexible tool in your arsenal.

There is no better way to experience the superiority of the Infiniium 8000 Series scopes than to see it. Contact Agilent today to request an evaluation. Or visit: [www.agilent.com/find/8000](http://www.agilent.com/find/8000)



The Infiniium 8000 Series offers bandwidths of 600 MHz and 1 GHz. Equipped with an XGA LCD display, scopes can be ordered as either a DSO or MSO. With built-in GPIB and low 5U high profile, it's ideal for rackmount applications.

### Infiniium 8000 Series oscilloscopes

Model	Bandwidth	Sample rate 4-ch/2-ch	Standard memory 4-ch/2-ch	Scope channel	Logic channel
DSO8064A	600 MHz	2 GSa/s/4 GSa/s	4 Mpts/8 Mpts	4	-
MSO8064A	600 MHz	2 GSa/s/4 GSa/s	4 Mpts/8 Mpts	4	16
DSO8104A	1 GHz	2 GSa/s/4 GSa/s	4 Mpts/8 Mpts	4	-
MSO8104A	1 GHz	2 GSa/s/4 GSa/s	4 Mpts/8 Mpts	4	16

# What makes the Infiniium 8000 Series flexible enough for a whole range of test and debug challenges?

## Great measurement capability

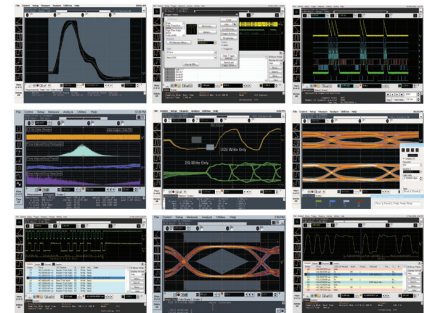
**Oscilloscope:** The powerful features of our Infiniium Series oscilloscopes, coupled with good scope specifications give you excellent signal representation on both DSO and MSO models.

**Logic analyzer:** 16 digital channels let you see critical data values and timing relationships on MSO models



## Wide range of debug and compliance application software

**Need accurate answers to your measurement questions?** The Infiniium 8000 Series offers a wide range of application-specific software for debug, analysis and compliance testing. Which application is right for you? Take a look at the possibilities on pages 13-17.

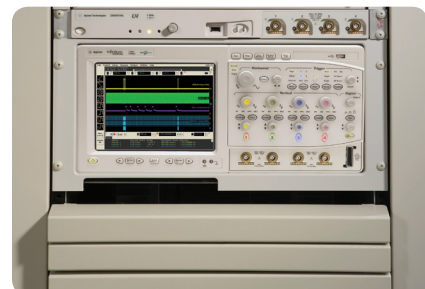


## Sized to fit your environment

**Need to stack other instruments on top?**

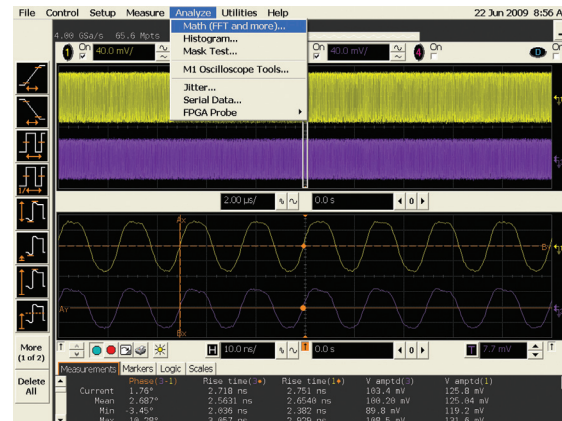
**Need to rackmount your scope?**

The Infiniium 8000 Series retains a traditional form factor with just a 5U high height.



# Oscilloscope capabilities

Scope channels ensure superior viewing of signals under test. All models incorporate a powerful, feature-packed Infiniium oscilloscope with responsive deep memory.



Up to 1 GHz bandwidth and 4 GSa/s high sample rates guarantee you'll see a good representation of the analog characteristics of signals you're testing

Mask tests, histograms and a wide variety of functions provide deep signal analysis.

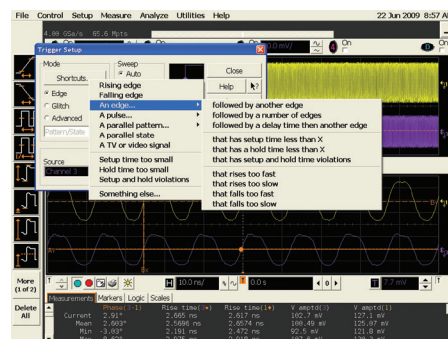
## Responsive deep memory

With standard 4 Mpts, and up to 128 Mpts of memory, you can capture long time periods while retaining fast sample rates. Fast update rates mean your scope stays responsive with deep memory on, ensuring precise representation of analog signals.



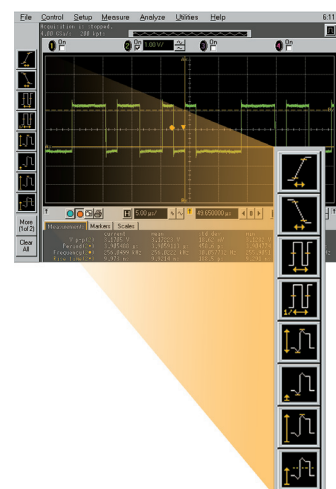
## Advanced triggering

Advanced triggers are essential when you are investigating suspected problems. Infiniium offers a full range of advanced triggers to help you isolate and capture the condition you need to characterize.



## Drag and drop measurements

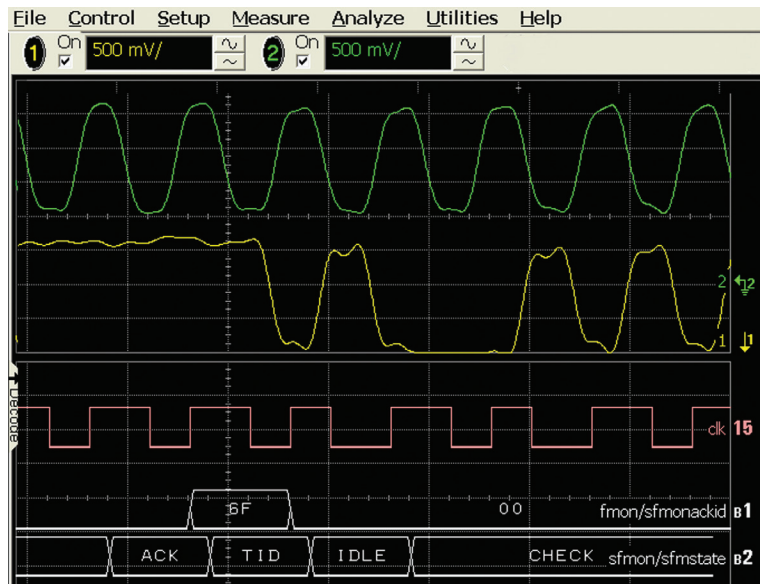
It's simple: drag an icon from the measurement bar and drop it on the cycle you want to measure. You can make up to five measurements on your waveforms, on up to five different cycles. All of the measurements appear at the bottom of the display with statistics and are color-coded to the channel you are measuring.



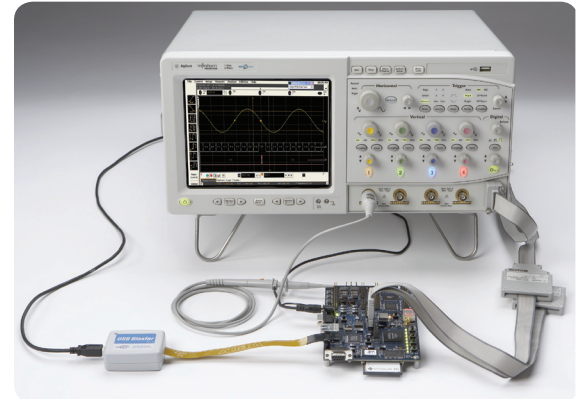


# MSO capabilities

## MSO models add 16 high-speed timing channels



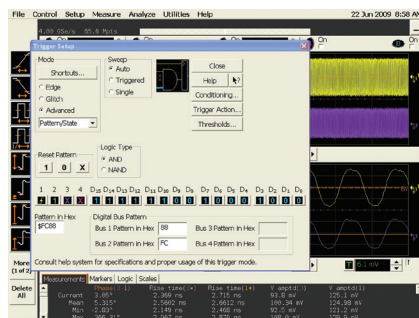
Use the timing channels to evaluate control signal relationships and data buses up to 16 bits wide. Use symbols to more quickly interpret waveforms.



Designing with Altera or Xilinx FPGAs? Use the FPGA dynamic probe for rapid internal FPGA measurements. Using I<sup>2</sup>C, SPI, or CAN? Use the digital channels to acquire and decode these buses, preserving analog channels for other time-correlated measurements.

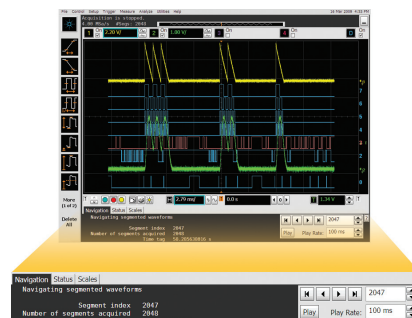
## Digital and mixed-signal trigger

Trigger on and display individual signals or buses. With precise time-correlation between analog and digital signals, confidently trigger across any combination of analog and digital signals simultaneously.



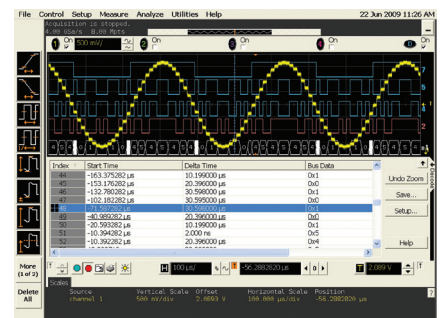
## Industry's only segmented memory for both analog and digital channels

Capture short bursts without consuming memory during periods when the trigger condition is not met. Agilent is the only vendor that supports segmented memory capture on both analog and digital channels.



## Waveform and Listing Windows

View buses as waveforms or easily follow events in the listing window expandable to the entire display. A blue tracking marker provides time-correlation between waveform and listing displays.

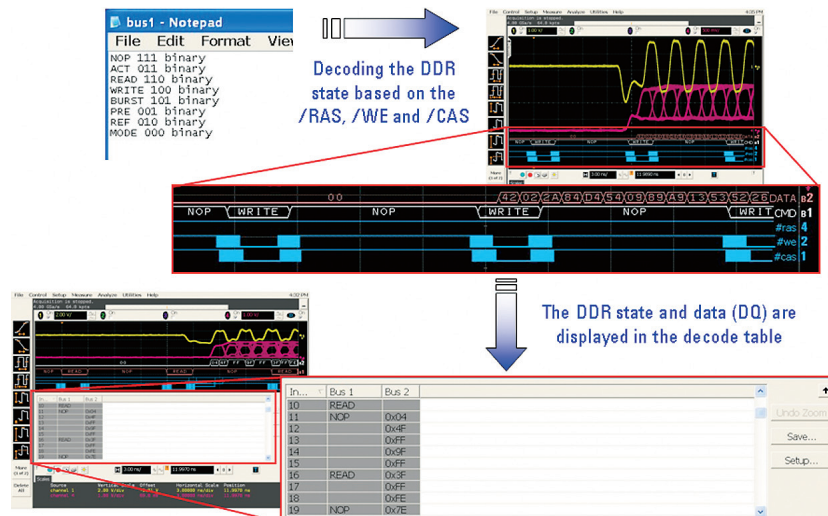


# Infiniium Features

DSO8064A/MSO8064A, DSO8104A/MSO8104A

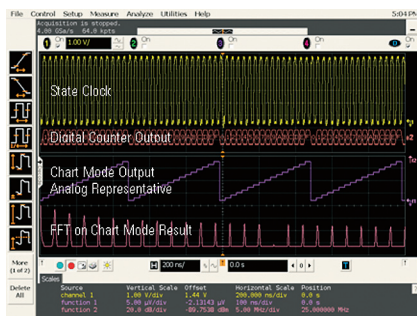
## Serial, parallel and wideband signal decode

Whether you are working on serial, parallel or wideband signals, you can use the 8000 Series to decode your waveforms. When you are working on parallel waveforms, you can even customize the bus states to be displayed on the decode table.



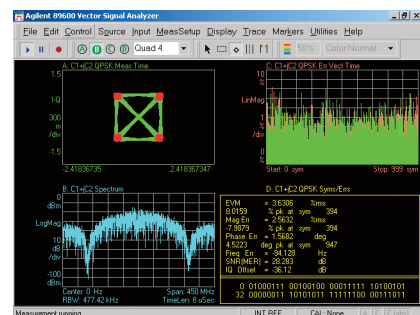
## Chart mode feature

Chart mode applies trend analysis techniques to see how the digital output (ADC, counter, address lines, etc.) vary over time. This method is effective to quickly find anomalies of the digital signals. You can also apply math operators such as "FFT" to view the frequency domain of the analog values.



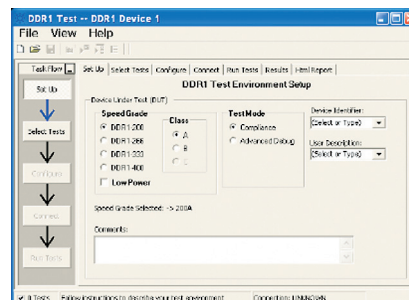
## Powerful frequency and modulation analysis

The 8000 Series provides superior frequency domain analysis, RF-signal demodulation and extensive standard-specific analysis coverage including WiMAX™, WLAN, 3GPP, RFID and UWB with the optional 89601A Series VSA software. With digital and wireless applications merging, you can use the 8000 Series one-box solution to validate the time and frequency domains.



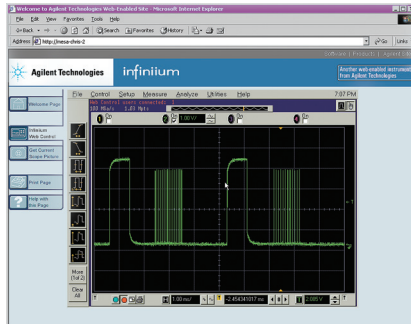
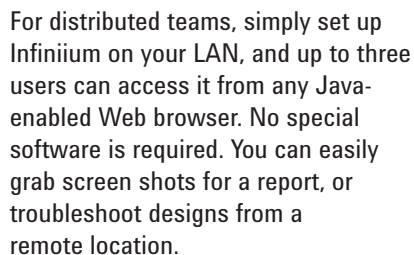
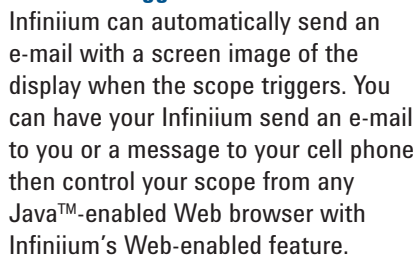
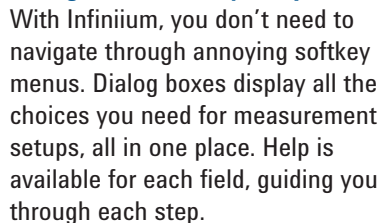
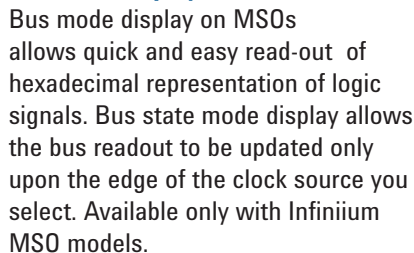
## Extensive application software suite

The 8000 Series provides wide application coverage for you to quickly and easily verify your designs. Application packages include jitter, DDR, USB, Ethernet, FlexRay, CAN, SPI, I<sup>2</sup>C, and FPGA.



## DS08064A/MS08064A, DS08104A/MS08104A

Zooming with Infiniium's graphical user interface is simple and convenient. Just use the mouse to draw a box around the area of interest and click inside. Zoom uses the full display so you get meaningful vertical as well as horizontal resolution gains. Use multiple zoom boxes to see deep inside your signal. Zooming couldn't be simpler or faster.

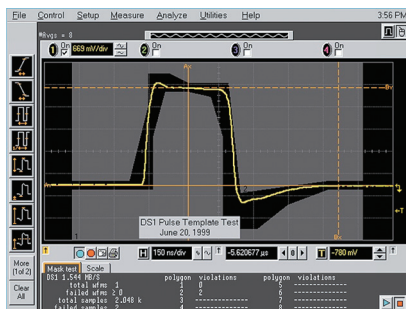


# Infiniium Features (continued)

## DSO8064A/MSO8064A, DSO8104A/MSO8104A

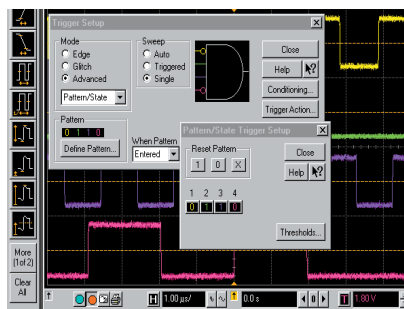
### AutoMask and mask test

Mask testing is simplified with AutoMask. Acquire a waveform, define tolerance limits, and create a test envelope. Mask testing provides a pass/fail comparison of an incoming signal to the test envelope. Easily test your design's conformance to industry standards with the communication mask test kit option.



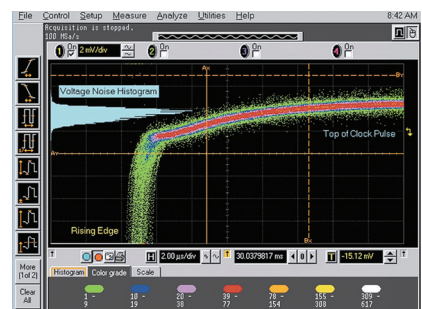
### Advanced triggering

Advanced triggers are essential when you are investigating known problems. Infiniium offers a full range of advanced triggers to help you isolate and capture the condition you need to characterize. Advanced trigger setups are simplified by using intuitive dialog boxes with descriptive graphics.



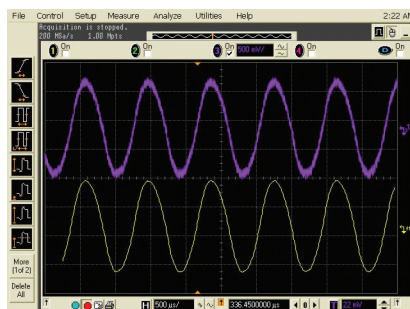
### Color-graded persistence with histograms

By providing seven levels of color grades for a visual representation of waveform distribution, color-graded persistence makes it easy to pick out signal anomalies and see how often they occur. Histograms quantify both noise and jitter in your target system.



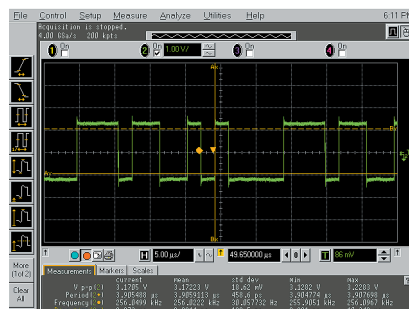
### High/low pass filter

This function applies a real-time digital filter to the source waveform that you choose. This filtering feature enhances your ability to examine important signal components by filtering out unwanted frequency components.



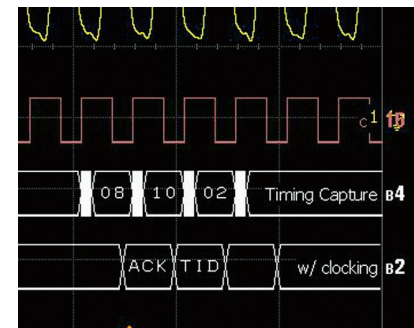
### QuickMeasure and statistics

Instantly make five common measurements on your signal, with easy-to-read statistics, by pressing the QuickMeas+ button on the front of your Infiniium. The measurements displayed can be easily customized.



### Pseudo state

Convert digital timing waveforms into state waveforms, specifying the clock edge when your data is valid. The MSO filters out all invalid states leaving exclusively valid states in the waveform display.





# Connectivity and probing

## Connectivity

### Industry compatibility

Export screen shots and waveforms in numerous industry-standard formats. In addition, the 8000 Series supports compatibility with the following

- IVI COM driver for application development environments such as Visual Studio, Agilent VEE, NI LabView and MATLAB instrument control toolbox.

[www.agilent.com/find/adn](http://www.agilent.com/find/adn)

- IntuiLink tool bars and data capture.

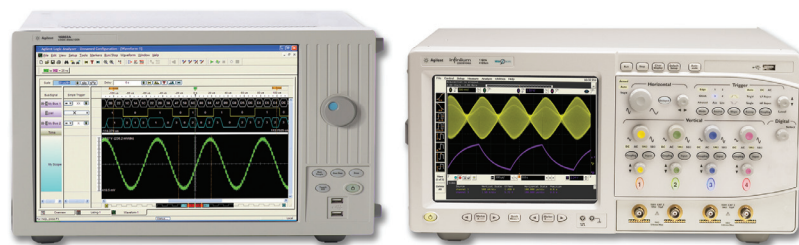
[www.agilent.com/find/intuilink](http://www.agilent.com/find/intuilink)

- LXI Class C including built-in Web control

### View Scope logic analyzer and oscilloscope correlation

Use simple time-correlated measurements between your scope and Agilent 16900, 16800, 1680, or 1690 Series logic analyzer at no charge. Scope and logic waveforms are integrated into a single logic analyzer

display for easy viewing analysis – all with a simple point-to-point LAN connection. You can also cross trigger the instruments, automatically de-skew the waveforms and maintain marker tracking between the instruments.



## Probing

The Infiniium 8000 Series oscilloscopes ship with four 10073C 10:1 divider passive probes per scope and probe accessory pouch.

With both 50  $\Omega$  and 1 M $\Omega$  inputs, Infiniium 8000 Series scopes support a wide range of probes, including Agilent's InfiniiMax Series probes.

Agilent offers an innovative family of probes that are engineered for signal access and measurement accuracy. Whether you're looking for simple passive probes, the high bandwidth and low loading of an active probe, or specialty probes for current or high voltage, we can meet your needs. Our innovative accessories allow reliable connection to challenging components like small pitch devices, surface mount ICs, and DDR BGA packages – even hands free! To see our entire award-winning portfolio of passive, single-ended active, differential active, and current probes as well as an oscilloscope compatibility chart, please view the Agilent Probes and Accessories Selection Guide. publication number 5989-6162EN.



**Up to 128 Mpts of MegaZoom fast deep memory** sustains maximum sample rates for long time captures.

**Remote access** via Web browser or programming environment with GPIB commands over LAN allows you to access your oscilloscope from any networked PC.

**E-mail-on-trigger** allows you to leave your oscilloscope, and when that intermittent event is captured, Infiniium sends you an e-mail that tells you exactly when it happened with an attached screen image.

**10/100/1000 BaseT LAN interface** lets you easily print to network printers, save files to network drives, and control the oscilloscope remotely.

**Label waveforms and add comments** to Infiniium's display for thorough documentation before saving screen images.

**Context-sensitive right-click menus** allow quick access to oscilloscope settings, controls, and display properties.

**High-definition XGA color display with 256 levels of intensity** uncovers subtle signal details that most oscilloscopes won't show you... enabled by next-generation MegaZoom technology.

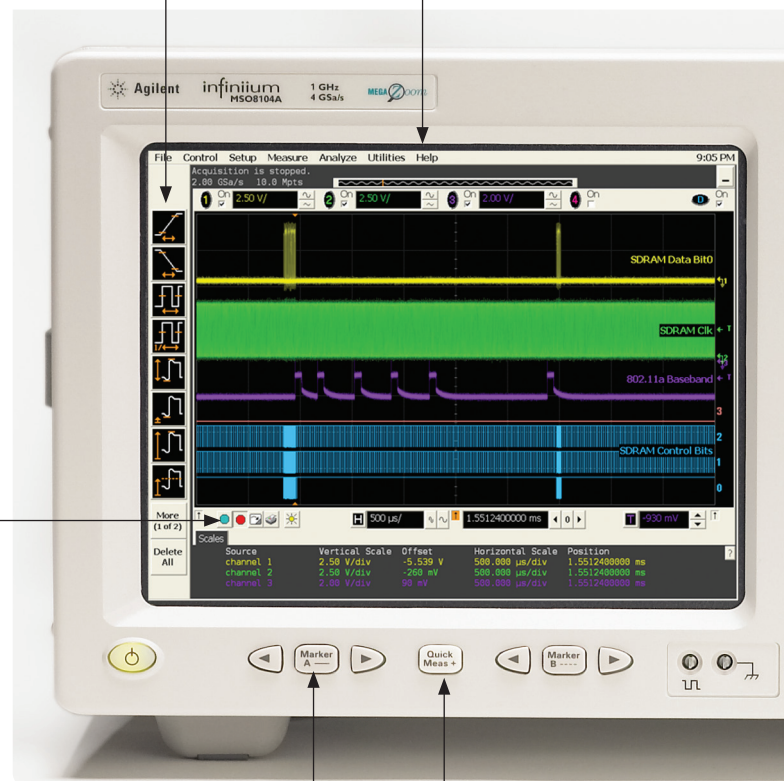
**Drag-and-drop measurements** from the measurement bar provide an intuitive way to make a measurement on a particular cycle of your waveform.

**Touch screen display** comes standard for mouse-free operation.

**Get fast answers to your questions** with the comprehensive built-in information system. The task-oriented setup guide provides step-by-step instructions for several measurement procedures.

**Measurement markers** can be easily controlled via front-panel arrow keys or dragging and dropping them with the pointer.

**QuickMeas+ key** gives you any five automated measurements with the push of a button. You can also configure this key to print/save screen images among other functions.



● **MegaZoom** technology enables you to quickly pan and zoom through the deepest waveforms for detailed analysis.

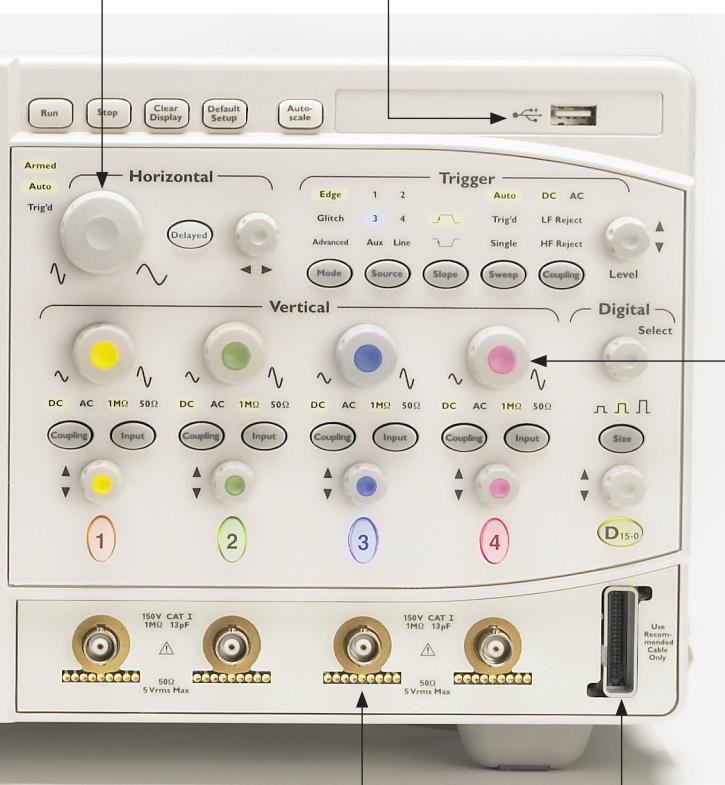
**USB 2.0 port directly on front panel** makes it easy to save files to a USB mass storage device.

**Award-winning ease-of-use** is made possible by attention to details like Infiniium's analog-like front panel controls, color-coded to correspond to displayed waveforms.

**Hands-free operation** is available with Infiniium's VoiceControl option.

**Open Windows XP Pro** platform enables you to install third-party applications such as Excel, LabVIEW, and MATLAB to perform custom analysis and processing, all inside the oscilloscope.

**XGA video monitor out** provides the ability to run third-party applications on a large external display while the internal display continues to display acquired waveforms.



● **AutoProbe interface** completely configures your oscilloscope and provides power to various current and active probes, including InfiniiMax active probes.

● **Mixed signal oscilloscope (MSO) models** seamlessly integrate four analog scope channels with 16 digital channels that provide full-width viewing and triggering across many embedded signal interactions.

# Agilent Infiniium portfolio

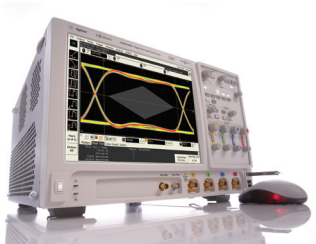
Agilent’s Infiniium lineup includes 8000, 9000 and 90000A Series oscilloscopes. These share a number of advanced hardware and software technology blocks. Use the following selection guide to determine which best matches your specific needs.



Lowest cost, ideal for rackmount

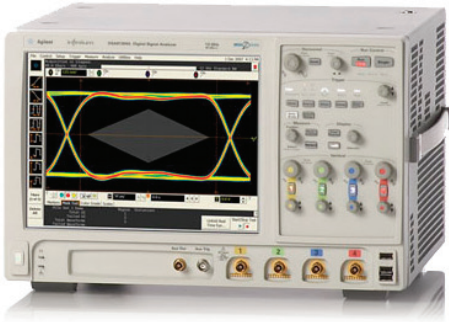


Widest range of applications.  
Biggest display plus thin depth



Lowest noise, highest bandwidth

	8000 Series	9000 Series	90000 Series
600 MHz bandwidth	•		
1 GHz bandwidth	•	•	
2.5 GHz and 4 GHz bandwidth		•	•
> 4 GHz bandwidth			•
Bandwidth upgradability		•	•
50 Ω & 1 MΩ inputs	•	•	
MSO models	•	•	
Max 2-channel (4-channel) sample rate	4 GSa/s (2 GSa/s)	20 GSa/s (10 GSa/s)	40 GSa/s (40 GSa/s)
Built-in GPIB available	•		•
Rackmount height	5U	8U	7U
Display size	8"	15"	12.1"
Footprint (HxWxD)	8.5 " x 17.2" x 17.3" 22 cm x 44 cm x 44 cm	12.9 " x 16.8" x 9" 33 cm x 43 cm x 23 cm	11.1 " x 17" x 19.9" 28 cm x 43 cm x 51 cm





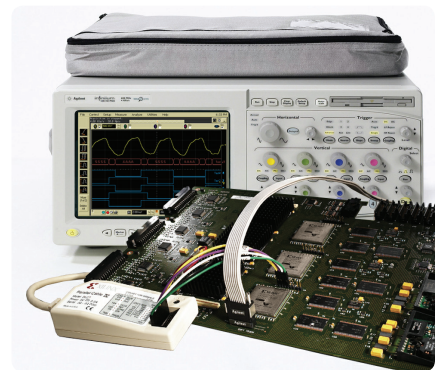
## Infiniium Advanced Application Software

The Agilent 8000 Series Infiniium oscilloscope offers a broad portfolio of add-on applications that enables you to customize your oscilloscope. These applications are available as add-on options at your initial scope purchase or as user-installed options at a later time. For more information about these options and to see if new applications have been added to our portfolio, please visit [www.agilent.com/find/8000scope-apps](http://www.agilent.com/find/8000scope-apps).

### Xilinx and Altera FPGA dynamic probe for Infiniium MSO (N5397A and N5433A)

Agilent's MSO FPGA dynamic probe provides rapid internal FPGA visibility and quick instrument setup using an innovative core-assisted approach. Measurement tasks that previously took hours can be done in a few mouse clicks.

In a few seconds you can easily measure a different set of internal signals without changing your FPGA design. The FPGA dynamic probe also imports signal names from your FPGA design to the MSO digital channel labels.



### Low-speed serial data analysis software (Option 007 or N5391A)

The N5391A low-speed serial data analysis software provides a fast and easy way to debug inter-integrated circuit (I<sup>2</sup>C) and 2-, 3- or 4-wire serial peripheral interface (SPI) serial communication buses. The low-speed SDA software provides the ability to capture and automatically display decoded serial data in numerical

format synchronized with the analog or digital waveform, display decoded packets in a sortable listing window view with automatic click and zoom capability, and perform search functions for a particular packet with navigator controls.



### Power measurement application (U1882A)

Agilent's power application provides a full suite of power measurements that run directly on the Infiniium 8000 Series oscilloscope. The power measurement application offers seven modules to help you characterize your devices (power device analysis, input line analysis, output analysis, turn on/

off analysis, transient analysis, modulation analysis and deskew analysis) in addition to report generation. Make more accurate power supply efficiency measurements by using a U1880A deskew fixture to deskew your voltage and current probes.

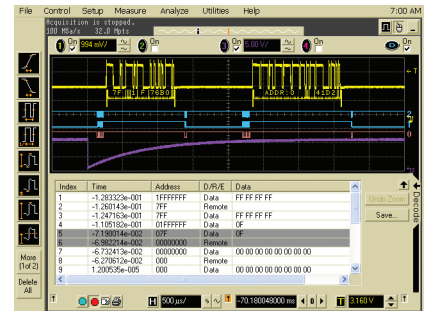


## Infiniium Advanced Application Software (continued)

### Automotive serial data analysis software (Option 008 or N5402A)

The N5402A automotive serial data analysis software allows engineers to view both protocol layer information and physical layer signal characteristics for CAN and FlexRay buses inside a single instrument, the Infiniium oscilloscope. Numerical decode values are automatically displayed and synchronized below the captured

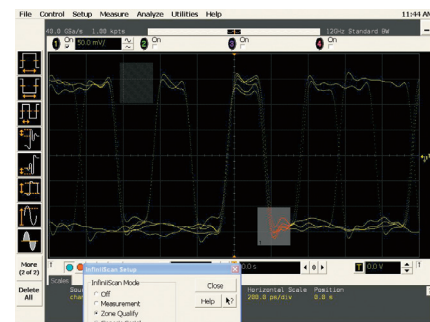
signal's waveform. They can also be viewed in a sortable listing window which allows automatic click and zoom capability to the signal of interest as well as performs search functions for a particular packet. The option also provides software clock recovery and real-time eye diagram measurements.



### InfiniiScan event identification software (Option 009 or N5415A)

The Agilent InfiniiScan event identification software quickly and easily identifies signal integrity issues. This innovative software scans through thousands of acquired waveforms per second to help isolate anomalous signal behavior. InfiniiScan can scan for multiple events simultaneously

with resolution down to 70-ps events plus automated navigation to failure events. InfiniiScan software finders consist of: measurement, zone qualify, generic serial, non-monotonic edge and runt. InfiniiScan goes beyond the classic limitations of hardware triggering and deep memory.

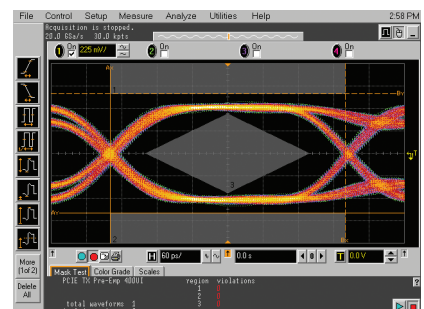


### High-speed serial data analysis software (Option 003 or N5384A)

The N5384A high-speed serial data analysis (SDA) software provides an effective way to validate signal integrity for designs employing high-speed serial interfaces with embedded clocks. The high-speed SDA software, when used with Infiniium oscilloscopes, allows you to:

- recover embedded clocks with first-order PLL, second-order PLL, or constant frequency algorithms
- choose an external reference clock input

- display the recovered clock synchronized with the analog waveform view of the serial data stream
- build real-time eye diagrams
- unfold real-time eye diagrams to easily locate failures versus time
- perform custom mask testing
- make TIE jitter measurements relative to the recovered clock or external reference clock

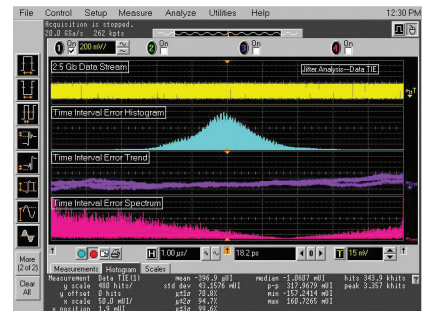


## Infiniium Advanced Application Software (continued)

### EZJIT jitter analysis software (Option 002 or E2681A)

The E2681A jitter analysis option provides the most commonly needed jitter measurements, including cycle-cycle jitter, N-cycle jitter, period jitter, time interval error, setup and hold time, measurement histograms, measurement trending and jitter

spectrum. EZJIT provides a setup wizard that guides you through the setup of the jitter measurement, explains how each jitter measurement works, and tells you when to use it.

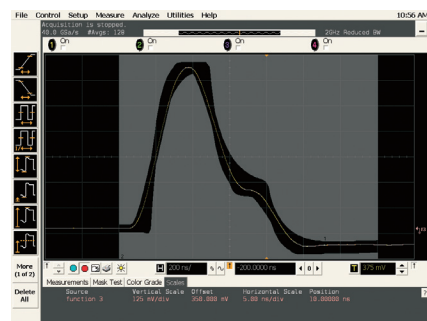


### N5392A Ethernet electrical performance validation and compliance software

The Agilent N5392A Ethernet electrical performance validation and compliance software performs a wide range of electrical tests to meet the Ethernet electrical specifications for 1000Base-T, 100Base-TX and 10Base-T systems as documented in the IEEE 802.3-2005 and ANSI3.263-1995 standards.

#### Features:

- Test setup wizard guides you through test selection, configuration, connection, execution and results reporting
- Fixtures available: N5395B or N5395C or N5395C Ethernet test fixtures and N5396A jitter test cable
- Supports 1000Base-T disturbing signal measurements with the use of 33250A arbitrary waveform generators
- Supports return loss measurements with most HP/Agilent vector network analyzers

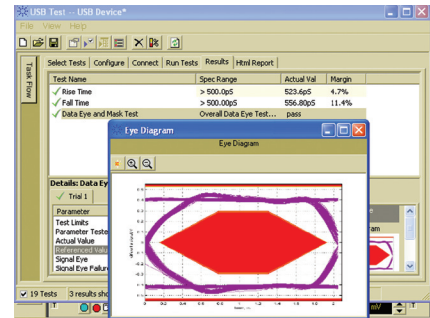


## Infiniium Advanced Application Software (continued)

### USB 2.0 performance validation and compliance software (N5416A)

The Infiniium USB 2.0 electrical performance validation and compliance option provides a fast and reliable way to verify USB electrical specification compliance for USB 2.0 devices, hosts, and hubs. The Infiniium USB 2.0 test option executes the official USB-IF MATLAB scripts with MATLAB's runtime engine embedded in the oscilloscope. Results are displayed in

a flexible report format with margin analysis. The Infiniium 8000 Series with bandwidths of 600-MHz and 1 GHz can appropriately test USB 2.0 low- and full-speed buses. The E2646A SQiDD test fixture is available for making the physical connection between the Infiniium oscilloscope and the device under test.

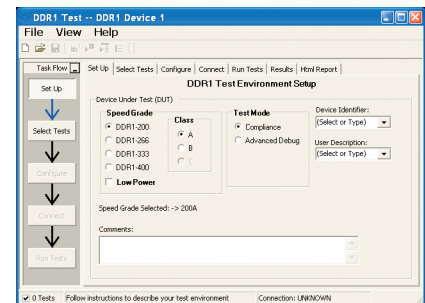


### DDR1 compliance test application (U7233A)

The Agilent U7231A DDR1 compliance test application provides you with a fast and easy way to characterize and evaluate the electrical and timing parameters of your DDR1 design. The tests performed by U7231A are based on the JEDEC JESD79E DDR SDRAM Specification.

#### Features:

- Setup wizard for quick setup and testing
- Automated measurement and analysis to save you time and effort
- Margin analysis to indicate how close your device comes to passing or failing the test
- Automatic HTML report generation for easy documentation

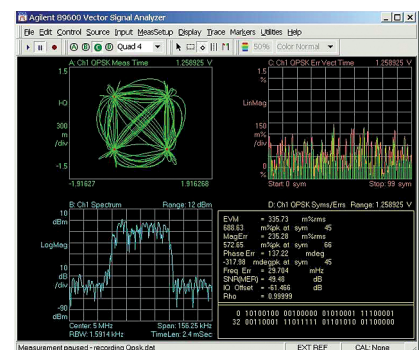


### Vector signal analysis software for Infiniium (89601A)

The 89601A vector signal analyzer (VSA) software, used with the Infiniium 8000 Series, enables flexible signal analysis and demodulation up to 1-GHz bandwidth for troubleshooting wideband modulated signals in radar and communications applications. The solution provides:

- Flexible demodulation for measuring constellation diagrams, carrier offset, and frequency error for QPSK signals, 256-QAM signals and much more

- Display formats including spectrogram, phase vs. time, and frequency vs. time for rapid insight into complex signal behavior
- Error vector magnitude measurements (with 89601A Option AYA)
- Markers to facilitate frequency, amplitude, offset, power, phase, other measurements
- Time gating that allows you to select specific portion of signals for signal analysis
- Variable frequency resolution





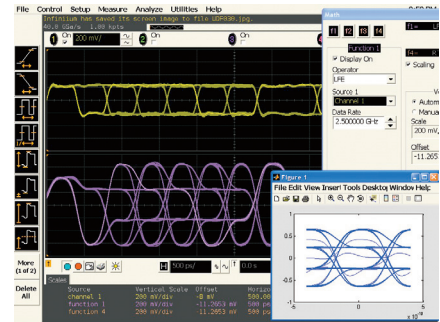
## Infiniium Advanced Application Software (continued)

### Infiniium user-defined function (Option 010 or N5430A)

The Agilent N5430A Infiniium user-defined function opens up new possibilities for mathematical analysis features of Infiniium by creating a gateway to MATLAB from MathWorks ([www.mathworks.com/](http://www.mathworks.com/)). You can now add your favorite MATLAB .m scripts as “math function operators,” and use them just like any other standard functions provided with the Infiniium. The scope passes data to MATLAB and then displays the result back on the screen in real time. Requires MATLAB software separately.

#### Features:

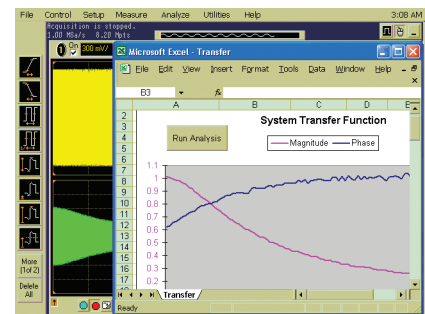
- Seamless gateway to powerful MATLAB analysis functionality
- Real-time analysis, real-time update
- Requires XML programming and .m script file
- Supports 2 control variables, and 2 sources
- Supports MATLAB version R14 SP1 and later



### My Infiniium integration package (Option 006 or E2699A)

The E2699A My Infiniium integration package option allows you to extend the power of your Infiniium oscilloscope by letting you launch your application directly from the oscilloscope's front panel or graphical

user interface. Any program that can be run under Windows XP can be launched from the Infiniium scope user interface or front panel, including applications such as Agilent VEE, Microsoft Excel, or MATLAB.



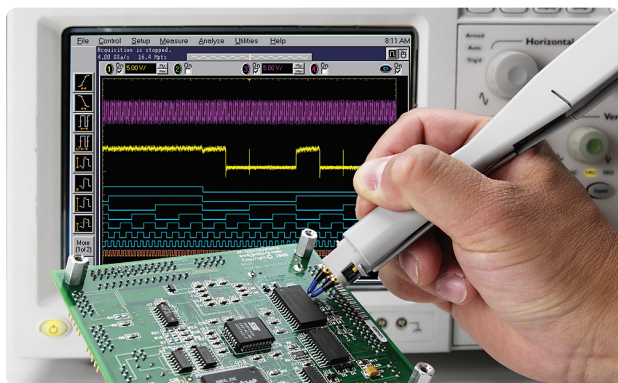
### Communication mask test kit (E2625A)

Take the frustration out of communications testing and prove your designs conform to industry standards with the communication mask test kit option. Infiniium's familiar Windows interface makes it easy for you to access the masks you need and configure your tests.

In addition, the communication mask test kit comes with a set of electrical communication adapters to ensure convenient, reliable, and accurate connections to your device under test. Includes more than 20 industry-standard ANSI T1.102, ITU-T G.703, and IEEE 802.3 communication signal mask templates.



# Infiniium Active Probing



## Probing importance

If you are concerned about accurate reproduction of your signals as they appear on your device under test, you need the best end-to-end measurement system starting at the probe tip. To ensure that you achieve the full bandwidth of your oscilloscope, you need to ensure you are using a probe that shows you the details of the

signal. For example, the 1-GHz models (DSO8104A and MSO8104A) will need an active probe with the bandwidth of at least 1-GHz. The 1156A or the 1130A active probes are recommended to achieve the full system bandwidth of your scope. In addition, a selection of probes that specifically enhances or utilizes Infiniium 8000 Series are also listed.

For more complete information on Agilent probing solutions please see the *Oscilloscope Probes and Accessories Selection Guide* (Agilent publication number 5989-6162EN).

## Recommended probes

Model	Probe bandwidth	System bandwidth
1156A	1.5-GHz active probe	1 GHz with MSO8104A and DSO8104A 600 MHz with MSO8064A and DSO8064A
1130A	1.5-GHz InfiniiMax probe amplifier <i>No probe heads included</i> <sup>1</sup>	1 GHz with MSO8104A and DSO8104A 600 MHz with MSO8064A and DSO8064

## Other probe choices

Model	Description
10070C	1:1, 1-M $\Omega$ passive probe <sup>2</sup>
1165A	10:1, 10-M $\Omega$ 600-MHz passive probe
1147B	50-MHz, 15-A AC/DC current probe
N2780A	2-MHz/500-A AC/DC current probe <sup>3</sup>
N2781A	10-MHz/150-A AC/DC current probe <sup>3</sup>
N2782A	50-MHz/30-A AC/DC current probe <sup>3</sup>
N2783A	100-MHz/30-A AC/DC current probe <sup>3</sup>
1153A	200-MHz differential probe
E5396A	Half-size (17 channel) soft touch connectorless logic probe for MSO models
N5450A	InfiniiMax extreme temperature extension cable for temperature chamber testing

<sup>1</sup> For a complete probing solution, also order a connectivity kit or individual probe head(s) (E2675A, E2668A, E2669A)

<sup>2</sup> Fine-pitch and IC probing kits available (10072, 10075A)

<sup>3</sup> Order N2779A 3-channel power supply for N2780A series current probe

# Infiniium Performance Characteristics

## Vertical: scope channels

## DSO8064A, MSO8064A, DSO8104A, MSO8104A

Input channels	DSO8064A/DSO8104A: 4 analog MSO8064A/MSO8104A: 4 analog + 16 digital	
Analog bandwidth at 50 $\Omega$ (–3 dB)*	DSO8064A/MSO8064A: 600 MHz DSO8104A/MSO8104A: 1 GHz	
Calculated rise time <sup>1</sup> at 50 $\Omega$	DSO8064A/MSO8064A: 583 ps DSO8104A/MSO8104A: 350 ps	
Input impedance*	1 M $\Omega$ $\pm$ 1% (13 pF typical), 50 $\Omega$ $\pm$ 1.5%	
Sensitivity <sup>2</sup>	1 mV/div to 5 V/div (1 M $\Omega$ ) 1 mV/div to 1 V/div (50 $\Omega$ )	
Input coupling	1 M $\Omega$ : AC, DC; 50 $\Omega$ :DC	
Hardware bandwidth limit	20 MHz	
Vertical resolution <sup>3</sup>	8 bits, $\geq$ 12 bits with averaging	
Channel-to-channel isolation (any two channels with equal V/div settings)	DC to 50 MHz: 50 dB >50 MHz to 500 MHz: 40 dB >500 MHz to 1 GHz: 30 dB	
DC gain accuracy* <sup>2,4</sup>	$\pm$ 1.25% of full scale at full resolution channel scale	
Maximum input voltage*	1 M $\Omega$ 150 V RMS or DC, CAT I $\pm$ 250 V (DC + AC) in AC coupling 50 $\Omega$ 5 Vrms, CAT I	
Offset range	<b>Vertical sensitivity</b>	<b>Available offset</b>
1 M $\Omega$	1 mV to <10 mV/div	$\pm$ 2 V
	10 mV to <20 mV/div	$\pm$ 5 V
	20 mV to <100 mV/div	$\pm$ 10 V
	100 mV to <1 V/div	$\pm$ 20 V
	1 V to 5 V/div	$\pm$ 100 V
50 $\Omega$	1 mV to <5 mV/div	$\pm$ 2 V
	5 mV to <200 mV/div	$\pm$ 5 V
	200 mV to 1 V/div	$\pm$ 20 V
Offset accuracy* <sup>2</sup>	$\pm$ (1.25% of channel offset +2% of full scale +1 mV)	
Dynamic range	$\pm$ 8 div from center screen (1 M $\Omega$ ) $\pm$ 12 div from center screen (50 $\Omega$ )	
DC voltage measurement accuracy* <sup>2,4</sup>	Dual cursor $\pm$ [(DC gain accuracy)+(resolution)] Single cursor $\pm$ [(DC gain accuracy)+(offset accuracy)+(resolution/2)] Example for single cursor accuracy for 70 mV signal, 10 mV/div, 0 offset: Accuracy = $\pm$ [1.25% (80 mV) + (1.25% (0) + 2% (80 mV) + 1 mV ) + (0.4%/2) (80 mV)] = $\pm$ 3.8 mV	

## Infiniium Performance Characteristics (continued)

### Vertical: analog noise floor

		DSO/MS08064A				DSO/MS08104A			
	Volts/div	Vrms 50 $\Omega$	Vrms 1 M $\Omega$	Vp-p 50 $\Omega$	Vp-p 1 M $\Omega$	Vrms 50 $\Omega$	Vrms 1 M $\Omega$	Vp-p 50 $\Omega$	Vp-p 1 M $\Omega$
Full bandwidth	5 mV	204.8 $\mu$ V	219.8 $\mu$ V	1.61 mV	1.65 mV	285.4 $\mu$ V	283.8 $\mu$ V	2.30 mV	2.22 mV
	10 mV	228.3 $\mu$ V	243.9 $\mu$ V	1.67 mV	1.75 mV	315.5 $\mu$ V	312.7 $\mu$ V	2.41 mV	2.36 mV
	20 mV	341.9 $\mu$ V	351.8 $\mu$ V	2.44 mV	2.48 mV	456.6 $\mu$ V	454.9 $\mu$ V	3.45 mV	3.42 mV
	50 mV	957 $\mu$ V	966.1 $\mu$ V	6.86 mV	6.91 mV	1.26 mV	1.25 mV	9.51 mV	9.45 mV
	100 mV	1.61 mV	1.64 mV	11.56 mV	11.7 mV	2.13 mV	2.13 mV	16.06 mV	16.13 mV
	200 mV	3.39 mV	3.22 mV	24.3 mV	22.9 mV	4.47 mV	4.19 mV	33.85 mV	31.8 mV
	500 mV	9.59 mV	9.87 mV	69.1 mV	70.6 mV	12.59 mV	11.38 mV	95 mV	86 mV
	1 V	16.2 mV	16.03 mV	116.3 mV	114.6 mV	21.39 mV	21.1 mV	160.9 mV	158.7 mV
20 MHz hardware bandwidth limit	5 mV	210 $\mu$ V	219 $\mu$ V	1.53 mV	1.69 mV	126.0 $\mu$ V	144.1 $\mu$ V	931 $\mu$ V	1.06 mV
	10 mV	222 $\mu$ V	237 $\mu$ V	1.65 mV	1.72 mV	206.0 $\mu$ V	212.1 $\mu$ V	1.55 mV	1.59 mV
	20 mV	365 $\mu$ V	371 $\mu$ V	2.67 mV	2.71 mV	378.0 $\mu$ V	379.4 $\mu$ V	2.85 mV	2.85 mV
	50 mV	891 $\mu$ V	897 $\mu$ V	6.56 mV	6.66 mV	1.084 mV	1.08 mV	8.18 mV	8.16 mV
	100 mV	1.47 mV	1.48 mV	10.65 mV	10.8 mV	1.97 mV	1.97 mV	14.7 mV	14.7 mV
	200 mV	3.62 mV	2.91 mV	26.4 mV	21.0 mV	3.75 mV	3.93 mV	28.2 mV	29.3 mV
	500 mV	8.92 mV	8.19 mV	65.7 mV	59.9 mV	10.9 mV	9.45 mV	82.0 mV	70.8 mV
	1 V	14.68 mV	14.9 mV	106.8 mV	108.2 mV	19.8 mV	19.06 mV	149.5 mV	142.0 mV

### Vertical: digital channels

#### MS08064A, MS08104A

Number of channels	16 digital – labeled D15 – D0
Threshold groupings	Pod 1: D7 – D0 Pod 2: D15 – D8
Threshold selections	TTL, 5.0V CMOS, 3.3V CMOS, 2.5V CMOS, ECL, PECL, user defined
User-defined threshold range	$\pm 8.00$ V in 10 mV increments
Maximum input voltage	$\pm 40$ V peak CAT I
Threshold accuracy	$\pm (100$ mV + 3% of threshold setting)
Input dynamic range	$\pm 10$ V about threshold
Minimum input voltage swing	500 mV peak-to-peak
Input impedance	100 k $\Omega$ $\pm$ 2% (~ 8 pF) at probe tip
Channel-to-channel skew	2 ns typical, 3 ns maximum
Glitch detect	$\geq 2.5$ ns
Resolution	1 bit



## Infiniium Performance Characteristics (continued)

<b>Horizontal</b>		<b>DS08064A, MS08064A, DS08104A, MS08104A</b>
Main time base range	<b>DS08064A/MS08064A</b> 500 ps/div to 20 s/div	<b>DS08104A/MS08104A</b> 200 ps/div to 20 s/div
Horizontal position range	0 to $\pm 200$ s	
Delayed sweep range	1 ps/div to current main time base setting	
Resolution	4 ps	
Time scale accuracy*	$\pm(15 + 2 \cdot (\text{years since manufacture}))$ ppm	
Delta-time measurement accuracy*	Values apply to period measurements of 0.5 Vpp sine waves with frequencies equal to 1/2 the oscilloscope bandwidth at 100 mV/div using $\geq 2$ GSa/s and sinx/x interpolation	
	<b>DS08064A/MS08064A</b>	<b>DS08104A/MS08104A</b>
$\geq 256$ averages, absolute (ps peak)	4.0	2.0
$\geq 256$ averages, standard deviation (ps rms)	1.2	0.38
No averaging, absolute (ps peak)	30	27
No averaging, standard deviation (ps rms)	6.8	5.7
Channel-to-channel deskew range	$-100 \mu\text{s}$ to $100 \mu\text{s}$	
Modes	Main, delayed, roll	
Reference positions	Left, center, right	
Jitter measurement floor	<b>DS08064A/MS08064A</b>	<b>DS08104A/MS08104A</b>
Time interval error	7 ps rms	5 ps rms
Period jitter	10 ps rms	7 ps rms
N-cycle, cycle-cycle jitter	15 ps rms	11 ps rms

## Infiniium Performance Characteristics (continued)

### Acquisition: scope channels

### DS08064A, MS08064A, DS08104A, MS08104A

Real time sample rate (max)	
2 channels	4 GSa/s
Each channel	2 GSa/s
Equivalent time sample rate (max)	250 GSa/s
Memory depth <sup>5</sup>	<b>2 channels/4 channels</b>
Standard	8 Mpts/4 Mpts
Option 080	16 Mpts/8 Mpts
Option 160	32 Mpts/16 Mpts
Option 320	64 Mpts/32 Mpts
Option 640	128 Mpts/64 Mpts
Sampling modes	
Real time	
Normal	Successive single-shot acquisitions
Peak detect	Captures and displays narrow pulses or glitches at all real time sample rates
High resolution	Real-time boxcar averaging reduces random noise and increases resolution
Equivalent time	Random repetitive sampling (higher time resolution at faster sweep speeds)
Segmented memory	Captures bursting signals at maximum sample rate without consuming memory during periods of inactivity. Selectable number of segments up to 32,768 depending on memory option installed. Minimum inter-segment time (or the time between the end of the previous acquisition and the beginning of the next acquisition) of 20 $\mu$ s.
Averaging	Selectable from 2 to 65,534
Filters	
(Sin[x])/x Interpolation	Filter on/off selectable FIR digital filter. Digital signal processing adds points between acquired data points to enhance measurement accuracy and waveform display quality. BW = sample rate/4

### Acquisition: digital channels

### MS08064A, MS08104A

Maximum input frequency	250 MHz
Maximum real time sample rate	1 GSa/s
Memory depth per channel	32 M
Minimum width glitch detection	2.5 ns

## Infiniium Performance Characteristics (continued)

Trigger: scope channels		DSO8064A, MSO8064A, DSO8104A, MSO8104A
Sensitivity		
Internal <sup>6</sup>		DC to 600 MHz: 0.6 div 600 MHz to 1 GHz: 1.5 div (50 $\Omega$ )
Auxiliary		DC to 600 MHz: 300 mVp-p
Level range		
Internal		$\pm 8$ div from center screen (1 M $\Omega$ ) $\pm 8$ div from center screen (50 $\Omega$ )
Auxiliary		$\pm 5$ V
Sweep modes		Auto, triggered, single
Trigger coupling		DC, AC, low frequency reject (50 kHz high pass filter), high frequency reject (50 kHz low pass filter)
Trigger conditioning		Noise reject adds hysteresis to trigger circuitry decreasing sensitivity to noise
Trigger holdoff range		50 ns to 10 s
Trigger jitter		8 ps $\pm$ 0.05 ppm x  delay setting  rms
Trigger actions		Specify an action to occur, and the frequency of the action, when a trigger condition occurs. Actions include: e-mail on trigger and QuickMeas+ functions
Trigger modes		
Edge		Triggers on a specified slope and voltage level on any channel, auxiliary trigger or line input.
Glitch		Triggers on glitches narrower than the other pulses in your waveform by specifying a width less than your narrowest pulse and a polarity. Minimum glitch width is 500 ps (scope channels) or 2.5 ns (digital channels). Glitch range settings: <1.5 ns to <10 s (scope channels), <5 ns to <10 s (digital channels).
Line		Triggers on the line voltage powering the oscilloscope.
Pattern		Triggers when a specified logical combination of the channels is entered, exited, is present or absent for a specified period of time or is within a specified time range. Each channel can have a value of high (H), low (L) or don't care (X).
State		Pattern trigger clocked by the rising or falling edge, or both, of one channel. Logic type: AND or NAND.
Delay by time		The trigger is qualified by an edge. After a specified time delay between 5 ns to 10 s, a rising or falling edge on any one selected input will generate the trigger.
Delay by events		The trigger is qualified by an edge. After a specified delay between 1 to 16,000,000 rising or falling edges on any one selected input will generate the trigger.
TV		Trigger on one of the three standard television waveforms: 525 lines/60 Hz (NTSC) 625 lines/50 Hz (PAL), or define a custom waveform.
Violation triggers		
Pulse width		See trigger mode/glitch for performance characteristics. Greater than and less than selections available.
Setup/hold		Triggers on setup, hold or setup and hold violations in your circuit. Requires a clock and data signal on any two input channels as trigger sources. High and low thresholds and setup and/or hold time must then be specified.
Transition		Trigger on pulse rising or falling edges that do not cross two voltage levels in greater than or less than the amount of time specified.

## Infiniium Performance Characteristics (continued)

### Software trigger (InfiniiScan event identification software (Option 009))

Trigger modes	
Generic serial	Software triggers on NRZ-encoded data up to 80-bit pattern. Supports multiple clock data recovery methods including constant frequency, 1 <sup>st</sup> order PLL, 2 <sup>nd</sup> order PLL, explicit clock, explicit 1 <sup>st</sup> order PLL, 2 <sup>nd</sup> order PLL (requires N5384A except for the constant frequency).
Measurements	Software triggers on the results of the measurement values. For example, when the "pulse width" measurement is turned on, InfiniiScan measurement software triggers on a glitch as narrow as 250 ps.
Non-monotonic	Software triggers on the non-monotonic edge. The non-monotonic edge is specified by setting a hysteresis value.
Runt	Software triggers on a pulse that crosses one threshold but fails to cross a second threshold before crossing the first again.
Zone qualify	Software triggers on the user-defined zones on screen. Zones can be specified as either "must intersect" or "must not intersect." Up to four zones can be defined.

### Trigger: digital channels

**MS08064A, MS08104A**

Threshold range (user defined)	±8.0 V in 10-mV increments
Threshold accuracy*	±(100 mV + 3% of threshold setting)
Predefined thresholds	TTL=1.4 V, 5.0 V CMOS=2.5 V, 3.3 V CMOS=1.65 V, 2.5 V CMOS=1.25 V, ECL=-1.3 V, PECL=3.7 V



## Infiniium Performance Characteristics (continued)

Measurements and math	DS08064A, MS08064A, DS08104A, MS08104A
Waveform measurements	
Voltage (scope channels only)	Peak-to-peak, minimum, maximum, average, RMS, amplitude, base, top, overshoot, preshoot, upper, middle, lower, runt (with InfiniiScan)
Time (all channels)	Period, frequency, positive width, negative width, duty cycle, delta time
Time (scope channels only)	Rise time, fall time, T <sub>min</sub> , T <sub>max</sub> , channel-to-channel phase, setup time, hold time
Mixed (scope channels only)	Area, slew rate
Frequency domain	FFT frequency, FFT magnitude, FFT delta frequency, FFT delta magnitude
Eye pattern	Eye height, eye width, jitter, crossing %, Q-factor, duty cycle distortion
Jitter clock (scope only)	Cycle-cycle jitter, N-cycle jitter, cycle-cycle +width, cycle-cycle –width, cycle-cycle duty cycle (all with EZJIT)
Jitter data (scope only)	Time interval error (TIE), data rate, unit interval (all with EZJIT)
Measurement modes	
Automatic measurements	Measure menu access to all measurements, five measurements can be displayed simultaneously with statistics
QuickMeas+	Front-panel button activates five pre-selected or five user-defined automatic measurements
Drag and drop measurement toolbar	Measurement toolbar with common measurement icons that can be dragged and dropped onto a particular displayed waveform cycle
Statistics	Displays the mean, standard deviation, minimum, maximum range, and number of measurement values for the displayed automatic measurements
Histograms (scope channels only)	Vertical (for timing and jitter measurements) or horizontal (noise and amplitude change) modes, regions are defined using waveform markers. Measurements included: mean, standard deviation, mode, peak-to-peak, median, total hits, peak (area of most hits), and mean $\pm 1, 2$ , and 3 sigma
Mask testing	Allows pass/fail testing to user-defined or Agilent-supplied waveform templates.
AutoMask	allows user to create a mask template from a captured waveform and define tolerance range in time/voltage or percentage. Test modes include test forever, test to specified time or event limit, and stop on failure. Communications mask test kit option provides a set of ITU-T G.703, ANSI T1.102, and IEEE 802.3 industry-standard masks for compliance testing.
Marker modes	Manual markers, track waveform data, track measurements
Waveform math	Four functions f1-f4. Select from add, average, common mode, differentiate, divide, FFT magnitude, FFT phase, high pass filter, integrate, invert, low-pass filter, magnify, min, max, multiply, smoothing, subtract, versus
FFT	
Frequency range <sup>7</sup>	DC to 2 GHz (2 channels), DC to 1 GHz (each channel)
Frequency resolution	Resolution = sample rate/memory depth
Best resolution at maximum sample rate	4 GSa/s/32 M = 125 Hz
Frequency accuracy	(1/2 frequency resolution)+(5x10 <sup>-5</sup> )(signal frequency)
Signal-to-noise ratio <sup>8</sup>	80 dB at 1 Mpts memory depth
Window modes	Hanning, flattop, rectangular

## Infiniium Performance Characteristics (continued)

### Display

Display	
Display	8.4 inch color XGA TFT-LCD with touch screen
Intensity grayscale:	256-level intensity-graded display
Resolution	1024 pixels horizontally x 768 pixels vertically
Annotation	Up to 12 labels, with up to 100 characters each, can be inserted into the waveform area
Grids	Can display 1, 2 or 4 waveform grids
Waveform styles	Connected dots, dots, infinite persistence, color graded infinite persistence. Includes up to 256 levels of intensity-graded waveforms.
Waveform update rate	
Real time mode (nominal)	2,000 waveforms/sec (memory depth: 64 kpts, sampling rate: 4 GS/s, time/div: 500 ps, connect dots: on, sin(x)/x: on, color graded: off)

### Computer system and peripherals, I/O ports

Computer system and peripherals	
Operating system	Windows XP Pro
CPU	Intel® Celeron™ 3.2-GHz microprocessor
PC system memory	1 GB DDR2
Drives	≥ 40-Gb internal hard drive (optional removable hard drive), external DVD-RW drive (optional)
Peripherals	Logitech optical USB mouse, compact keyboard and stylus supplied. All Infiniium models support any Windows-compatible input device with a serial, PS/2 or USB interface.
File types	
Waveforms	Compressed internal format (*.wfm), comma separated values (*.csv), tab separated values (*.tsv) and Y value files (*.txt)
Images	BMP, PCX, TIFF, GIF or JPEG
I/O ports	
LAN	RJ-45 connector, supports 10Base-T, 100Base-T, and 1000Base-T. Enables Web-enabled remote control, e-mail on trigger or demand, data/file transfers and network printing.
GPIO	IEEE 488.2, fully programmable
RS-232 (serial)	COM1, printer and pointing device support
Parallel	Centronics printer port
PS/2	Two ports. Supports PS/2 pointing and input devices.
USB 2.0 Hi-Speed	One port on front panel plus four ports on rear panel. All USB 2.0 Hi-Speed compatible. Allows connection of USB peripherals like storage devices and pointing devices while the oscilloscope is on.
Dual-monitor video output	15 pin XGA, full color output of scope waveform display or dual monitor video output (up to SXGA resolution with a dual monitor use)
Auxiliary output	DC (± 2.4 V); square wave (~715 Hz and 456 MHz); trigger output (255 mV p-p into 50 Ω)
Trigger output	5 V 50 Ω back-terminated
LXI compliance	Functional Class C

## Infiniium Performance Characteristics (continued)

General characteristics		DSO8064A, MSO8064A, DSO8104A, MSO8104A
Temperature		
Operating		0 °C to + 50 °C
Non-operating		–40 °C to + 70 °C
Humidity		
Operating		Up to 95% relative humidity (non-condensing) at +40 °C
Non-operating		Up to 90% relative humidity at +65 °C
Altitude		
Operating		Up to 4,600 meters (15,000 feet)
Non-operating		Up to 15,300 meters (50,000 feet)
Vibration		
Operating		Random vibration 5-500 Hz, 10 minutes per axis, 0.3 g (rms)
Non-operating		Random vibration 5-500 Hz, 10 minutes per axis, 2.41 g (rms); resonant search 5-500 Hz, swept sine, 1 octave/minute sweep rate, (0.75 g), 5 minute resonant dwell at 4 resonances per axis
Power		100-240 VAC, ± 10%, Cat II, 47 to 63 Hz; Max power dissipated: 440 W
Weight		Net: 13.9 kg (30.6 lbs.) Shipping: 16.4 kg (36.1 lbs.)
Dimensions (excluding handle)		Height: 216 mm (8.5 in); width: 437 mm (17.19 in); depth: 440 mm (17.34 in)
Safety		Meets IEC1010-1 +A2, CSA certified to C22.2 No.1010.1, Self certified to UL 3111

- \* Denotes warranted specifications, all others are typical. Specifications are valid after a 30-minute warm-up period and ±10 °C from firmware calibration temperature.
- 1 Rise time figures are calculated from  $t_r = 0.35/\text{bandwidth}$ .
  - 2 Magnification is used below 5 mV/div range. Below 5 mV/div, full scale is defined as 40 mV. Full scale is defined as the major attenuator setting above an intermediate setting. (Major settings 50 Ω: 10 mV, 20 mV, 50 mV, 100 mV, 200 mV, 500 mV, 1 V, 1 MΩ: all of the above plus 2 V).
  - 3 Vertical resolution for 8 bits = 0.4% of full scale, for 12 bits = 0.024% of full scale.
  - 4 The dc gain accuracy decreases 0.08% of full scale per degree C from the calibration temperature.
  - 5 Maximum 2-channel memory depth only available at maximum 2-channel sample rate. Maximum each channel memory depth available at any selectable sample rate.
  - 6 Valid for vertical ranges > 5 mV/div.
  - 7 FFT amplitude readings are affected by input amplifier roll-off; DSO8064A and MSO8064A: –3 dB at 600 MHz, with amplitude decreasing as frequency increases above 600 MHz; DSO8104A and MSO8104A: –3 dB at 1 GHz, with amplitude decreasing as frequency increases above 1 GHz.
  - 8 Noise floor varies with memory depth and with averaging on or off.

# Infiniium Ordering Information

## 8000 Series oscilloscopes

	DSO8064A	MSO8064A	DSO8104A	MSO8104A
Bandwidth	600 MHz	600 MHz	1 GHz	1 GHz
Input channels	4 analog	4 analog + 16 logic	4 analog	4 analog + 16 logic
Maximum sample rate (2 channel)	4 GSa/s	4 GSa/s	4 GSa/s	4 GSa/s
Standard memory (2 channel)	8 Mpts	8 Mpts	8 Mpts	8 Mpts



The above models include: optical USB mouse, condensed keyboard, User's Quick Start Guide in English language (other languages also available), accessory pouch, front panel cover, power cord, one-year warranty, 10073C 10:1 passive probe (qty 4) and with MSO version 54826-68701 logic cable kit.

## Recommended probes

Model	Description
1156A	1.5 GHz active probe
1130A	1.5 GHz InfiniiMax probe amplifier – <i>No probe heads included</i> <sup>1</sup>

<sup>1</sup> For a complete probing solution, also order a connectivity kit or individual probe head(s) (E2675A, E2668A, E2669A)

For more information on selecting the right probe see page 17.

## Memory options

Option number - factory installed	Option number - user installed	Description
080	N5407A-080	16 Mpts on 2 channels, 8 Mpts on 4 channels
160	N5407A-160	32 Mpts on 2 channels, 16 Mpts on 4 channels
320	N5407A-320	64 Mpts on 2 channels, 32 Mpts on 4 channels
640	N5407A-640	128 Mpts on 2 channels, 64 Mpts on 4 channels

Memory can be added both at the time of initial purchase and after with a user installed option.

For a comprehensive list and selection criteria, refer to the *Oscilloscopes Probes and Accessories Selection Guide* (Agilent publication number 5989-6162EN). Or visit our Web site at [www.agilent.com/find/scope\\_probes](http://www.agilent.com/find/scope_probes).



## Infiniium Ordering Information (continued)

### Application options

Options	Description
<b>Digital analysis</b>	
N5397A	FPGA dynamic probe for Xilinx
N5433A	FPGA dynamic probe for Altera
<b>Serial data analysis</b>	
Option 007 or N5391A	Low-speed serial data analysis software for I <sup>2</sup> C and SPI serial communication buses
Option 008 or N5402A	Automotive serial data analysis software for CAN and FlexRay decode
Option 003 or N5384A	High-speed serial data analysis software for CAN and FlexRay serial communication buses
<b>Jitter analysis</b>	
Option 002 or E2681A	EZJIT jitter analysis software
E2690B	Oscilloscope tools including advanced time interval and jitter analysis software from Amherst Systems Associates
<b>Compliance testing</b>	
E2625A	Communication mask test kit
N5392A	Ethernet performance validation and compliance software
N5416A	USB 2.0 electrical performance validation and compliance software
U7233A	DDR1 compliance test application
<b>Power measurement analysis</b>	
U1882A	Power measurement analysis for Infiniium oscilloscopes
Option 001	Oscilloscope-locked license
Option 002	PC-locked license
<b>Vector signal analysis</b>	
89601A	VSA software for Infiniium
<b>Advanced triggering</b>	
Option 009 or N5415A	InfiniiScan event identification software
<b>User customized analysis software</b>	
Option 010 or N5430A	User-defined function - seamless linkage to MATLAB to support custom functions
Option 006 or E2699A	My Infiniium integration package enabling you to launch and integrate Windows application directly from your scope
<b>Hands free operation</b>	
E2682A	VoiceControl software

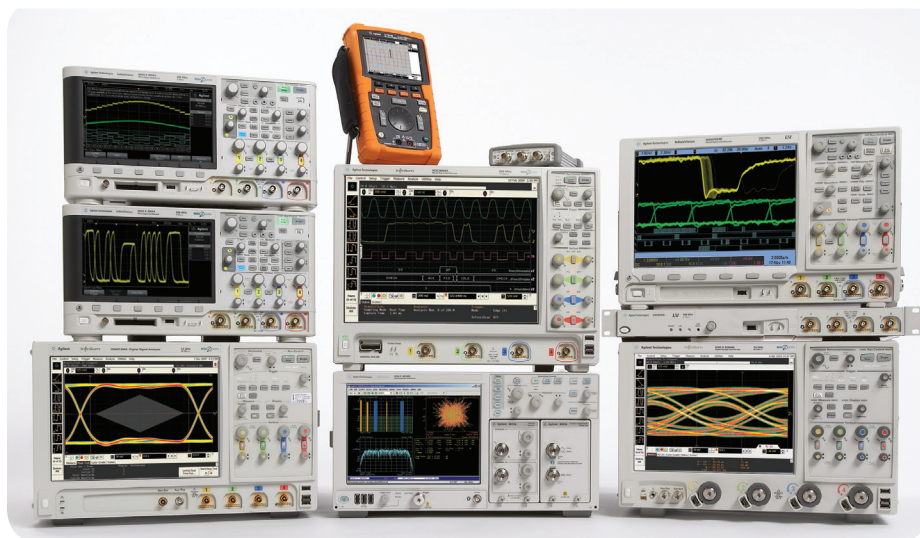
## Infiniium Ordering Information (continued)

### Other options

Option	Description
Option 017 (factory installed)	≥ 40 GB removable hard disk drive. Replaces ≥ 40 GB internal hard disk with a ≥ 40 GB removable hard disk. Order the N5422A for additional hard disk drive cartridges that contain the full Windows operating system and oscilloscope application.
Option 019 or N5453A	External touchscreen display for Infiniium oscilloscopes
Option 020 or N5437A	External DVD-RW drive
E2609B	Rackmount kit
A6J	ANSI Z540-compliant calibration
R-51B-001-3C	1-year return-to-Agilent warranty extended to 3 years

## Related Literature

Publication title	Publication type	Publication number
<i>Infiniium Probes, Accessories and Options</i>	Data sheet	5968-7141EN/ENUS
<i>Agilent Oscilloscope Probes and Accessories</i>	Selection guide	5989-6162EN
<i>Agilent 8000 Series Oscilloscopes</i>	Brochure	5989-5806EN
<i>Industry Compliance and Analysis Applications for Infiniium Oscilloscopes</i>	Brochure	5989-6704EN
<i>N5450A InfiniiMax Extreme Temperature Extension Cable</i>	Data sheet	5989-7542EN
<i>N5397A Xilinx FPGA Dynamic Probe for 8000 Series</i>	Data sheet	5989-1848EN
<i>N5433A Altera FPGA Dynamic Probe for 8000 Series</i>	Data sheet	5989-5940EN
<i>E2681A EZJIT Jitter Analysis Software</i>	Data sheet	5989-0109EN
<i>E2690B Oscilloscope Tools Software with Advanced Jitter Analysis</i>	Data sheet	5989-3525EN
<i>N5384A High-Speed Serial Data Analysis and Clock Recovery Software</i>	Data sheet	5989-0108EN
<i>N5391A Low-Speed Serial Data Analysis Software for I<sup>2</sup>C and SPI</i>	Data sheet	5989-1250EN
<i>N5402A Automotive Serial Data Analysis Software</i>	Data sheet	5989-3632EN
<i>89601A Infiniium Oscilloscopes and 89601A Vector Signal Analysis Software</i>	Data sheet	5989-0947EN
<i>N5392A Ethernet Electrical Performance Validation and Compliance Software</i>	Data sheet	5989-1527EN
<i>N5416A USB 2.0 Electrical Performance Validation and Compliance Software</i>	Data sheet	5989-4044EN
<i>U7233A DDR1 Compliance Test Application</i>	Data sheet	5989-7366EN
<i>N5415A InfiniiScan Event Identification Software</i>	Data sheet	5989-4605EN
<i>N5430A Infiniium User-Defined Function Application Software</i>	Data sheet	5989-5632EN



## Agilent Technologies Oscilloscopes

Multiple form factors from 20 MHz to >90 GHz | Industry leading specs | Powerful applications



**myAgilent**

[www.agilent.com/find/myagilent](http://www.agilent.com/find/myagilent)

A personalized view into the information most relevant to you.



[www.lxistandard.org](http://www.lxistandard.org)

LAN eXtensions for Instruments puts the power of Ethernet and the Web inside your test systems. Agilent is a founding member of the LXI consortium.

### Agilent Channel Partners

[www.agilent.com/find/channelpartners](http://www.agilent.com/find/channelpartners)

Get the best of both worlds: Agilent's measurement expertise and product breadth, combined with channel partner convenience.



Agilent Advantage Services is committed to your success throughout your equipment's lifetime. To keep you competitive, we continually invest in tools and processes that speed up calibration and repair and reduce your cost of ownership. You can also use Infoline Web Services to manage equipment and services more effectively. By sharing our measurement and service expertise, we help you create the products that change our world.

[www.agilent.com/find/advantageservices](http://www.agilent.com/find/advantageservices)



Java is a U.S. trademark of Sun Microsystems, Inc.

MATLAB is a U.S. registered trademark of The MathWorks, Inc.

LabView is a U.S. registered trademark of National Instruments.

Intel is a U.S. registered trademark and Celeron is a U.S. trademark of Intel Corporation.

Visual Studio is a registered trademark of Microsoft Corporation in the United States and/or other countries.

Windows is a U.S. registered trademark of Microsoft Corporation.

WiMAX is a trademark of the WiMAX Forum.

[www.agilent.com](http://www.agilent.com)

[www.agilent.com/find/8000family](http://www.agilent.com/find/8000family)

For more information on Agilent Technologies' products, applications or services, please contact your local Agilent office. The complete list is available at:

[www.agilent.com/find/contactus](http://www.agilent.com/find/contactus)

### Americas

Canada	(877) 894 4414
Brazil	(11) 4197 3600
Mexico	01800 5064 800
United States	(800) 829 4444

### Asia Pacific

Australia	1 800 629 485
China	800 810 0189
Hong Kong	800 938 693
India	1 800 112 929
Japan	0120 (421) 345
Korea	080 769 0800
Malaysia	1 800 888 848
Singapore	1 800 375 8100
Taiwan	0800 047 866
Other AP Countries	(65) 375 8100

### Europe & Middle East

Belgium	32 (0) 2 404 93 40
Denmark	45 45 80 12 15
Finland	358 (0) 10 855 2100
France	0825 010 700*
	*0.125 €/minute
Germany	49 (0) 7031 464 6333
Ireland	1890 924 204
Israel	972-3-9288-504/544
Italy	39 02 92 60 8484
Netherlands	31 (0) 20 547 2111
Spain	34 (91) 631 3300
Sweden	0200-88 22 55
United Kingdom	44 (0) 118 927 6201

For other unlisted countries:

[www.agilent.com/find/contactus](http://www.agilent.com/find/contactus)

Revised: October 11, 2012

Product specifications and descriptions in this document subject to change without notice.

© Agilent Technologies, Inc. 2011, 2012  
Printed in USA, December 10, 2012  
5989-4271EN



**Agilent Technologies**