

FRAnalyzer

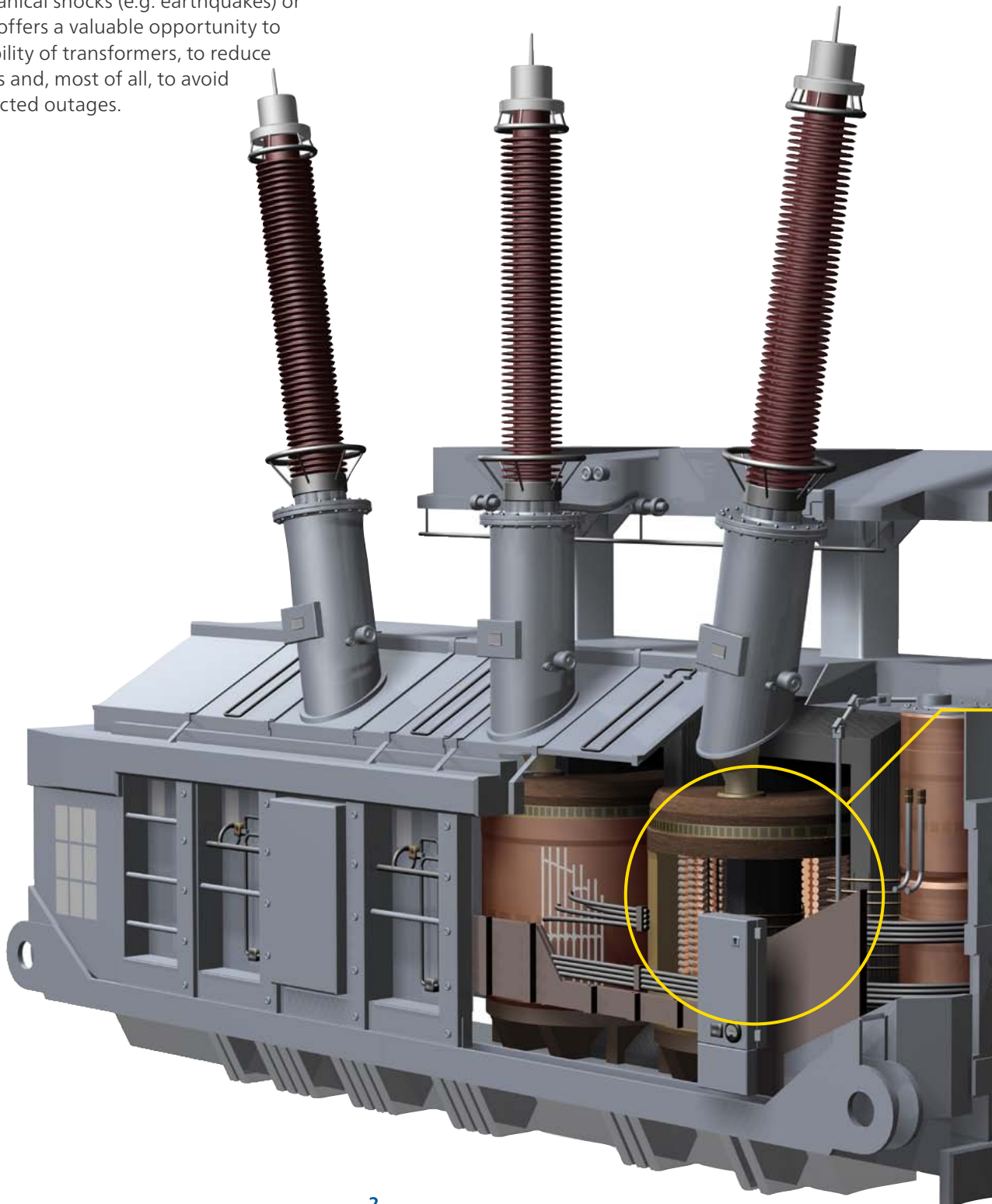
Reliable core and winding diagnosis for power transformers



Power transformer core & winding diagnosis

Avoid additional costs by using diagnostics

The OMICRON FRAnalyzer detects mechanical and electrical changes of the core and winding assembly of power transformers. By finding winding or core defects after faults, mechanical shocks (e.g. earthquakes) or transportation, it offers a valuable opportunity to improve the reliability of transformers, to reduce maintenance costs and, most of all, to avoid expensive unexpected outages.





Deformed core



Collapsed tap winding



Damaged main winding



Displaced internal connections

Which problems can be detected?

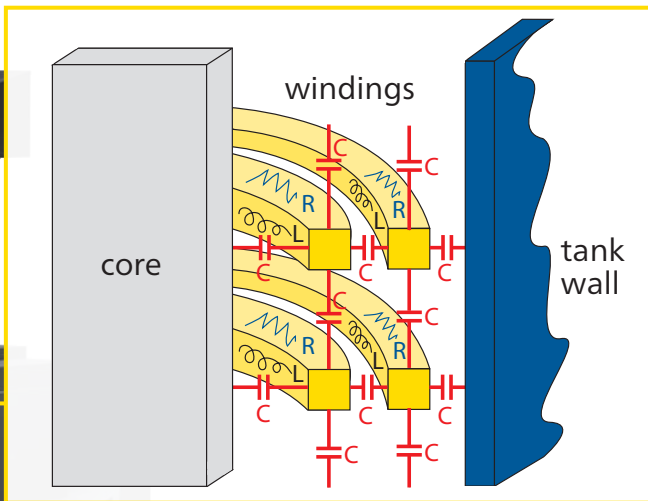
FRAnalyzer can detect the following problems:

- > winding deformation – axial & radial, like hoop buckling, tilting, spiraling
- > displacements between high and low voltage windings
- > partial winding collapse
- > shorted or open turns
- > faulty grounding of core or screens
- > core movement
- > broken clamping structures
- > problematic internal connections

How does it work?

Power transformers can be seen as a complex electrical network of capacitances, inductances and resistors. Each electrical network has got its unique frequency response. Therefore it is usually called a fingerprint. Geometrical changes within and between the elements of the network cause deviations of its frequency response.

Differences between such a fingerprint and the result of a later measurement are an indication of positional or electrical variations of the internal components. Different failures are directly related to different sections of the frequency range and can usually be discerned from each other.



Your Benefits:

- > High reliability of transformers due to high-quality diagnostics
- > Winding and core problems can be detected which remained hidden up to now
- > Transformer integrity after faults, mechanical shocks or transportation can be assured
- > Analysis helps avoiding unnecessary and expensive demounting of transformer's active part

Sweep Frequency Response Analysis (SFRA)

What is FRA?

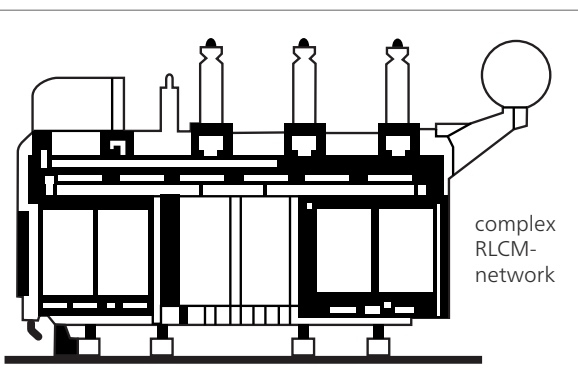
Frequency Response Analysis (FRA) is a powerful and sensitive method to evaluate the mechanical integrity of core, windings and clamping structures within power transformers. It measures their electrical transfer functions over a wide frequency range.

FRAnalyzer uses the SFRA principle (Sweep Frequency Response Analysis) – a worldwide proven method for measurements in frequency domain. SFRA is a comparative method, i.e. an evaluation of the transformer condition is done by comparing an actual set of SFRA results to reference results.

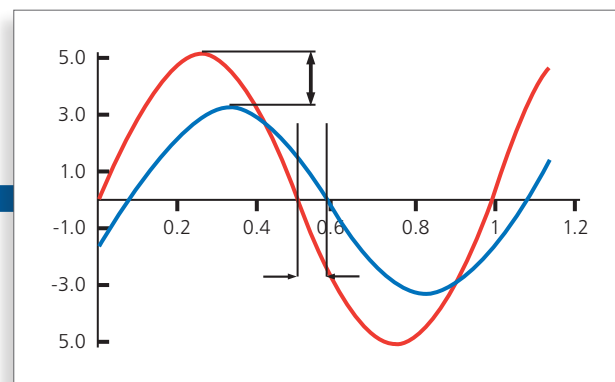
When to use non-intrusive SFRA?

- > After short-circuit testing
- > Before and after transport
- > After the occurrence of high transient fault currents
- > Routine diagnostic measurement
- > After significant changes of monitored values
- > After the observation of unusual routine test results

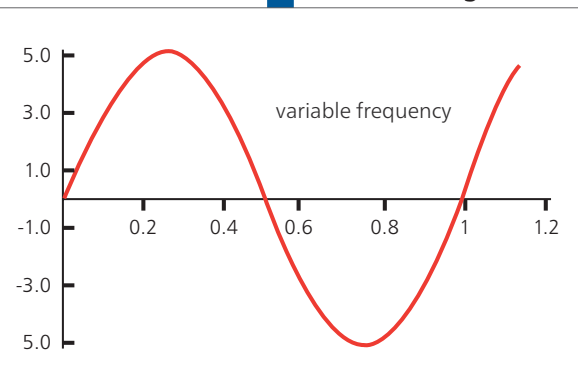
Transformer



Results



Sine generator



Measuring principle

FRAnalyzer injects a sinusoidal excitation voltage with a continuously increasing frequency into one end of the transformer winding and measures the signal returning from the other end. The comparison of input and output signals generates a unique frequency response which can be compared to reference data. Deviations indicate geometrical and/or electrical changes within the transformer. No additional data processing is required due to a direct measurement in the frequency domain.

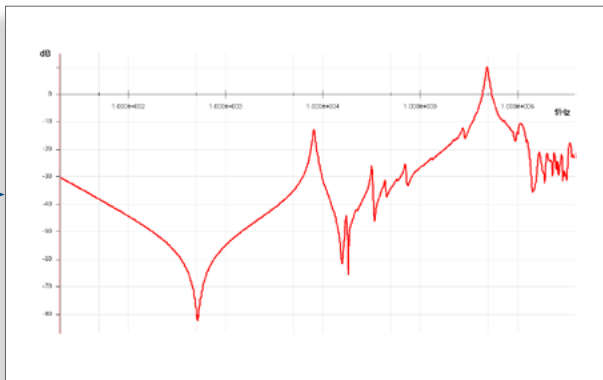
Commonly used assessment methods

Method	Used reference
time-based	earlier measurement of the same transformer
type-based	measurement of a type-equal transformer
phase comparison	measurement of other phases of the same transformer

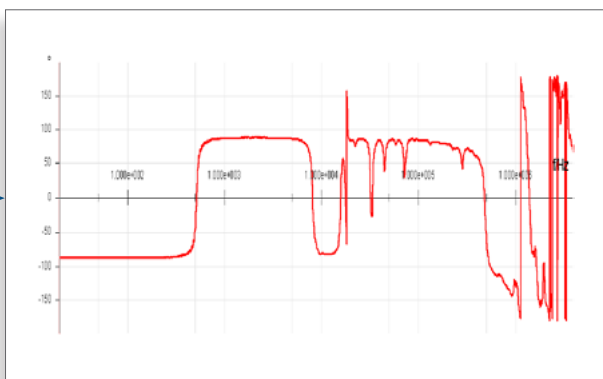
Why OMICRON's FRAnalyzer?

- > SFRA principle is the industry standard for measurements in frequency domain
- > Best reproducibility due to innovative connection technique
- > Easy handling due to extremely small size and weight
- > Highest convenience resulting from battery operation
- > Easy-to-use software with implemented standard-based curve assessment solution

Amplitude



Phase



Your Benefits:

- > SFRA is a non-intrusive test method, easy and fast to perform
- > Core faults, shorted or open turns can be detected due to wide frequency range
- > Small and light-weight equipment guarantee optimum usability

Unique connection technique



Exceptional reproducibility due to unique connection technique

Since SFRA is a comparative method, it is of vital importance that measurements reach a high degree of reproducibility. That is the only way to guarantee that deviations between actual and reference measurements are only related to defects within the observed transformer. Neither the external noise level nor inaccuracies within the measurement setup must take any influence on the results.

According to the standard of knowledge, the connections between the measuring device and the transformer terminals, as well as the grounding technique, have a key influence on reproducibility.



Screw-type clamps for optimum connection

In close cooperation with leading universities in the field of FRA testing on power transformers, OMICRON has developed a sophisticated connection solution to achieve highest possible reproducibility of the results.

Specially designed screw-type-connection clamps provide reliable electrical contact to the transformer. The FRAnalyzer uses double shield coax cables to ensure the highest available signal-to-noise ratio.

Wide flat grounding braids for low-noise interference

To enable the grounding of the coaxial cable shields at the transformer housing, which is the reference potential, an additional connection from the terminal adapter to the transformer tank is required. A poor grounding technique can lead to unreproducible and therefore unusable SFRA results.

In order to achieve the best possible SFRA measurements, the grounding connections should be of lowest inductance and provide a large surface area. Therefore the use of braids, which are less sensitive to interferences and make the measurement independent from the cable positioning is strongly recommended.

Flexible length of grounding braids for optimum measuring set up

The grounding braids should always run tightly along the body of the bushings in order to eliminate any influence of the grounding system on the measuring results. This is ensured by screw-type clamps which always connect the grounding braids with ideal length to the base of the bushing.

Only by using this exceptional set up is it possible to comply with the strict demands of engineers around the globe requiring a "ground extension as short as possible and with the smallest achievable loop".



Your Benefits:

- > True-value results due to accurate reproducibility
- > Screw-type clamps with spikes for reliable contacts even through layers of paint or dirt
- > Minimal noise interference due to the use of broad grounding braids
- > Optimum measuring set up due to grounding braids with adjustable length

Easy and efficient software

Getting started easily

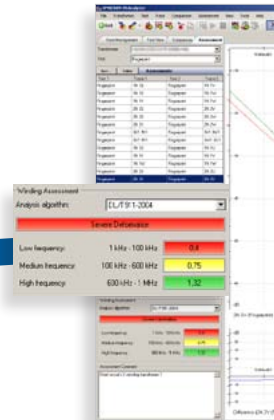
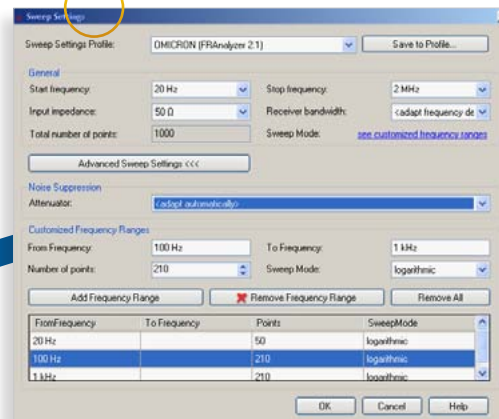
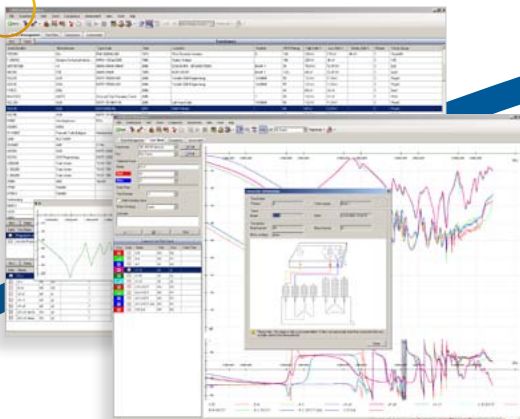
At the beginning of a test sequence the nameplate data of the transformer to be tested need to be entered. The terminal markings can be chosen from different templates such as IEC or ANSI and will be stored with all measured data. They can be used as template for later measurements.

Based on transformer type and vector group, a test sequence is suggested. Other sequences can also be added and changed freely and individually. The new connection scheme helps less experienced users with proper connection of the FRAnalyzer.

Flexible sweep settings for optimum measuring results

The sweep settings are fully customizable. They can be adjusted according to the number of measurement points and the receiver bandwidth in order to achieve an optimum signal-to-noise ratio.

In contrast to other measuring instruments with FRAnalyzer the measuring points can be set in linear or logarithmic scaling.



Easy assessment of measuring results according to standard

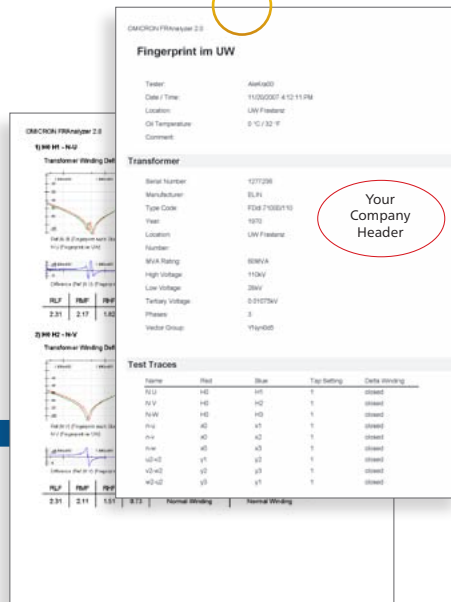
After the measurement a reference test can be defined. This can be a fingerprint of the same transformer or measured data of a type-equal transformer.

In addition to a manual comparison FRAnalyzer also provides the user a mathematical solution for a comparison of the traces based on the Chinese standard DL 911/2004.

Future-oriented documentation

All measured data is stored within the included database. Also existing measuring data in other data formats can be imported. The measurements can easily be sorted by transformer manufacturers, nominal power, location, or other criteria.

The FRAnalyzer software automatically generates a test report which is perfectly suited for own documentation. If necessary the data can also be exported in order to be processed in Microsoft Office®.

Fingerprint im UW

Tester: Axel Kuhn
 Date / Time: 11/05/2007 4:12:11 PM
 Location: LW Friesland
 Oil Temperature: 9 °C / 32 °F
 Comment:

Transformer

Serial Number: 1271286
 Manufacturer: BSH
 Type Code: FDM 7500/110
 Year: 1970
 Location: LW Friesland
 MVA Rating: 800VA
 High Voltage: 110kV
 Low Voltage: 20kV
 Tertiary Voltage: 0-21075kV
 Phases: 3
 Vector Group: Wye/Y0d

Name	Rel	Stat	Tap Setting	Delta winding
H2	H2	H2	1	closed
H3	H3	H3	1	closed
H4	H4	H4	1	closed
H5	H5	H5	1	closed
H6	H6	H6	1	closed
H7	H7	H7	1	closed
H8	H8	H8	1	closed
H9	H9	H9	1	closed
H10	H10	H10	1	closed
H11	H11	H11	1	closed
H12	H12	H12	1	closed
H13	H13	H13	1	closed
H14	H14	H14	1	closed
H15	H15	H15	1	closed
H16	H16	H16	1	closed
H17	H17	H17	1	closed
H18	H18	H18	1	closed
H19	H19	H19	1	closed
H20	H20	H20	1	closed
H21	H21	H21	1	closed
H22	H22	H22	1	closed
H23	H23	H23	1	closed
H24	H24	H24	1	closed
H25	H25	H25	1	closed
H26	H26	H26	1	closed
H27	H27	H27	1	closed
H28	H28	H28	1	closed
H29	H29	H29	1	closed
H30	H30	H30	1	closed
H31	H31	H31	1	closed
H32	H32	H32	1	closed
H33	H33	H33	1	closed
H34	H34	H34	1	closed
H35	H35	H35	1	closed
H36	H36	H36	1	closed
H37	H37	H37	1	closed
H38	H38	H38	1	closed
H39	H39	H39	1	closed
H40	H40	H40	1	closed
H41	H41	H41	1	closed
H42	H42	H42	1	closed
H43	H43	H43	1	closed
H44	H44	H44	1	closed
H45	H45	H45	1	closed
H46	H46	H46	1	closed
H47	H47	H47	1	closed
H48	H48	H48	1	closed
H49	H49	H49	1	closed
H50	H50	H50	1	closed
H51	H51	H51	1	closed
H52	H52	H52	1	closed
H53	H53	H53	1	closed
H54	H54	H54	1	closed
H55	H55	H55	1	closed
H56	H56	H56	1	closed
H57	H57	H57	1	closed
H58	H58	H58	1	closed
H59	H59	H59	1	closed
H60	H60	H60	1	closed
H61	H61	H61	1	closed
H62	H62	H62	1	closed
H63	H63	H63	1	closed
H64	H64	H64	1	closed
H65	H65	H65	1	closed
H66	H66	H66	1	closed
H67	H67	H67	1	closed
H68	H68	H68	1	closed
H69	H69	H69	1	closed
H70	H70	H70	1	closed
H71	H71	H71	1	closed
H72	H72	H72	1	closed
H73	H73	H73	1	closed
H74	H74	H74	1	closed
H75	H75	H75	1	closed
H76	H76	H76	1	closed
H77	H77	H77	1	closed
H78	H78	H78	1	closed
H79	H79	H79	1	closed
H80	H80	H80	1	closed
H81	H81	H81	1	closed
H82	H82	H82	1	closed
H83	H83	H83	1	closed
H84	H84	H84	1	closed
H85	H85	H85	1	closed
H86	H86	H86	1	closed
H87	H87	H87	1	closed
H88	H88	H88	1	closed
H89	H89	H89	1	closed
H90	H90	H90	1	closed
H91	H91	H91	1	closed
H92	H92	H92	1	closed
H93	H93	H93	1	closed
H94	H94	H94	1	closed
H95	H95	H95	1	closed
H96	H96	H96	1	closed
H97	H97	H97	1	closed
H98	H98	H98	1	closed
H99	H99	H99	1	closed
H100	H100	H100	1	closed

Your Benefits:

- > Easy and supporting software tools for reliable measurements even for beginners
- > High grade of flexibility due to freely selectable measuring settings
- > Assessment of traces based on standards for easy analysis without expert knowledge
- > Better overview and easy comparison of measurements via included database
- > Effective documentation via automated test reports

Technical data and ordering information

Technical data

General

Frequency range	10 Hz to 20 MHz (selectable)
Meas. point spacing	logarithmic, linear, or both
Calibration interval	every 3 years

Source output

FRA method	sweep frequency
Output impedance	50 Ω
Connector	BNC (double shielded)
Amplitude	2.83 V _{pp} = 1 V _{RMS} at 50 Ω load
Number of meas. points	max. 3,201 (user-selectable)

Inputs (Reference – CH 1, Measurement – CH 2)

Impedance	low (50 Ω), or high (1 M Ω) (selectable)
Connector	BNC (double shielded)
Dynamic range	> 120 dB
Accuracy	< 0.1 dB (down to -50 dB) and ± 1 dB (between -50 dB and -80 dB)

Environmental

Operating ambient temperature	-10 to +55 °C / +14 to +131 °F
Operating relative humidity	20... 95 %, non-condensing

Mechanical data / supply voltage

Weight	< 2 kg without measuring cables
Dimensions (W x H x D)	26 x 5 x 26.5 cm 10.25 x 2 x 10.5 in
DC power supply	DC 10 V to 24 V / 10 W
AC power supply	AC 100 V to 240 V / 50 to 60 Hz

PC requirements (minimum)

Interface	USB 1.1
PC operating system	Windows XP™, Windows Vista™ 32bit or Windows 7™ 32bit/64bit
Processor	Pentium™ 1 GHz
Memory	1 GB RAM
Drive	CD-ROM



Ordering information

FRAnalyzer with all components listed below (Order no. VE000660)

Order no.	Qty.	Description
-----------	------	-------------

VEHK0660	1	Coaxial-cable red with cable drum (18 m / 59 ft)
VEHK0661	1	Coaxial-cable blue with cable drum (18 m / 59 ft)
VEHK0662	1	Coaxial-cable yellow with cable drum (18 m / 59 ft)
VEHZ0661	4	Aluminum braid rolls (5 m / 16 ft)
VEHK0615	1	Grounding cable 6 mm ² gn/ye (6 m / 20 ft)
VEHZ0662	4	Screw-clamps for aluminum braid
VEHZ0664	2	Bushing-clamps
VEHZ0667	1	BNC adapter set
VESD0662	1	User manual
VEHZ0659	1	Power supply and battery charger
VEHZ0657	1	Crank handle
-	1	FRAnalyzer software



Additional accessories for FRAnalyzer:

VEHZ0673	Clamps set for short bushings (consisting of 2 short aluminum braids (1.5 m / 5 ft), 2 clamps and 1 carry bag)
VESM0661	FRAnalyzer software upgrade to 2.0 (for users of older software versions than 2.0)



OMICRON is an international company serving the electrical power industry with innovative testing and diagnostic solutions. The application of OMICRON products allows users to assess the condition of the primary and secondary equipment on their systems with complete confidence. Services offered in the area of consulting, commissioning, testing, diagnosis, and training make the product range complete.

Customers in more than 140 countries rely on the company's ability to supply leading edge technology of excellent quality. Broad application knowledge and extraordinary customer support provided by offices in North America, Europe, South and East Asia, Australia, and the Middle East, together with a worldwide network of distributors and representatives, make the company a market leader in its sector.

For a complete list of available literature please visit our website.

Americas

OMICRON electronics Corp. USA
12 Greenway Plaza, Suite 1510
Houston, TX 77046, USA
Phone: +1 713 830-4660
+1 800-OMICRON
Fax: +1 713 830-4661
info@omicronusa.com

Asia-Pacific

OMICRON electronics Asia Limited
Suite 2006, 20/F, Tower 2
The Gateway, Harbour City
Kowloon, Hong Kong S.A.R.
Phone: +852 3767 5500
Fax: +852 3767 5400
info@asia.omicron.at

Europe, Middle East, Africa

OMICRON electronics GmbH
Oberes Ried 1
6833 Klaus, Austria
Phone: +43 5523 507-0
Fax: +43 5523 507-999
info@omicron.at