



Winter Guide

Hand protection for **every hazard**



23.7°C
40%



CHAMBER
LIGHT
ON OFF



Why Superior Glove for Winter Protection

Laboratory-Tested Winter Ratings

All our winter gloves are tested in a specialized laboratory cold chamber

-30°C
(-22°F) 

You'll find an icon that clearly communicates the maximum cold protection a glove can provide

Extensive testing enables us to maximize warmth and dexterity in winter conditions



How Are Winter Gloves Tested?

1. Gloves are placed on a metal hand form, wired with sensors, and heated internally to 98.6°F (35°C) to mimic the human hand
2. Tiny pores on the metal hand simulates "sweating" to mimic what happens when a real hand is in a glove
3. Meanwhile, the chamber replicates humidity, wind chill, and cold temperatures
4. Data compiled from these elements allow us to provide a rating that indicates the lowest possible temperature protection a glove can comfortably provide



SIZE L
ENDURA® #3786K601
ANSI 45 CUT
ANSI 5 PUNCTURE

OILBLOC



Leather





Leather Gloves



ENDURA® 378GKGDT | S - 2XL

Leather gloves with 360° cut protection and oil / water resistance



ENDURA® 378GKGTL | XS - 3XL

Extra warm leather gloves with highly cut resistant liner



ENDURA® 378GTXTL | S - 2XL

Hi-viz leather gloves with enhanced grip and high cut resistance



CLUTCH GEAR® MXGKGHVTL | S - 2XL

Hi-viz cut-resistant mechanics gloves with adjustable wrist closures





ENDURA® 378GOBTKL | S - 3XL

Multi-hazard protection with arc-flash and fire resistance

Our Endura® 378GOBTKL multi-hazard gloves are arc flash and flame resistant, protecting hands from fire and electrical hazards. They provide 360° cut protection and oil/water resistance while an insulating liner keeps hands warm down to -15°C / 5°F.



WARNING: Known to the State of California to cause cancer, birth defects, or other reproductive harm. For more information, go to P65warnings.ca.gov



SIZE
L

Endura

#365DLXFTL

superior glove



Lineman





ENDURA® 365DLXTKG | S - XL

Hi-viz lineman gloves with 360° cut protection and retro-reflective silver strips for visibility

-15°C
(5°F)



ANSI
A4
CUT



ANSI
4
ABRASION

ANSI
5
PUNCTURE

ANSI
Probe



PROP 65



ENDURA® 365DLXDTL | M - XL

Hi-viz lineman gloves with extra warmth down to -20°C / -4°F

-20°C
(-4°F)



ANSI
5
PUNCTURE

ANSI
Probe



PROP 65



ENDURA® 365DLXFTL | M - 2XL

6" cuff hi-viz lineman gloves featuring retro-reflective silver strips for visibility

-10°C
(14°F)



ANSI
5
PUNCTURE

ANSI
Probe



PROP 65



ENDURA® 365DLX2TL | M - 2XL

2" cuff hi-viz lineman gloves featuring retro-reflective silver strips for visibility

-10°C
(14°F)



ANSI
5
PUNCTURE

ANSI
Probe

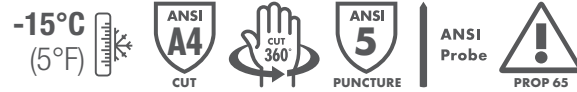


PROP 65



ENDURA® 361DLXTKG | S - 3XL

Hi-viz lineman mitts with 360° cut resistance



ENDURA® 361DLXFTL | M - XL

Hi-viz lineman mitts built for cold conditions down to -20°C / -4°F

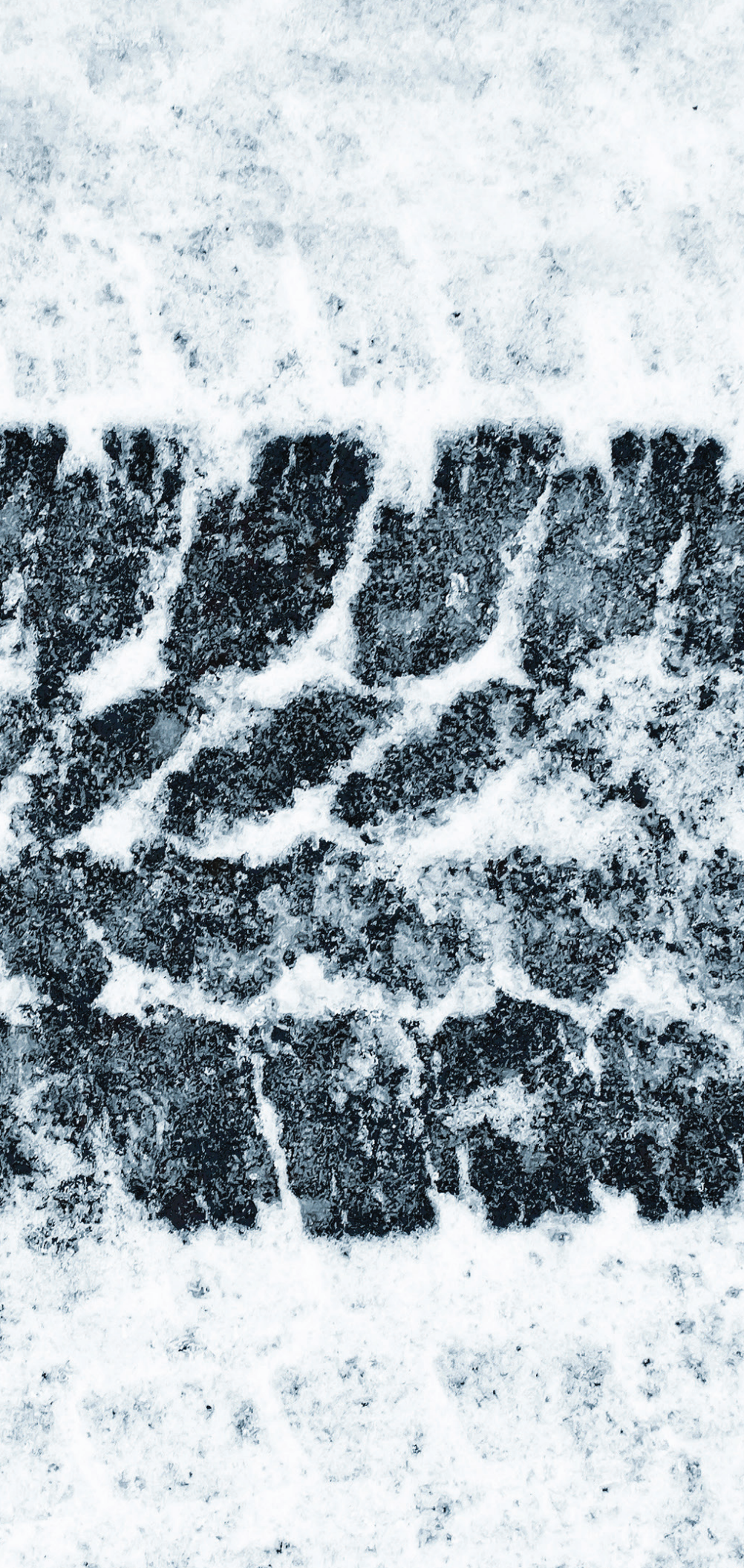


ENDURA® 361DLXWL | S - XL

Hi-viz lineman mitts built for extreme cold conditions down to -45°C / -50°F







Impact





Impact Gloves



ENDURA® 375KGTVB | S - 3XL

Highly cut-resistant multi-feature gloves with oil / water resistance

-10°C
(14°F)



ANSI
A5
CUT



ANSI / ISEA 138
2

ANSI
4
ABRASION

ANSI
4
PUNCTURE

ANSI
Probe



PROP 65



CHEMSTOP™ S15KGVNFVB | 7 - 11

Hi-viz medium impact protection gloves that also resist cuts, water, and chemicals

-5°C
(23°F)



ANSI
A6
CUT



ANSI / ISEA 138
2

ANSI
3
ABRASION

ANSI
2
PUNCTURE

ANSI
Probe

-25°C
(-13°F)



ANSI
A7
CUT



ANSI / ISEA 138
2

ANSI
5
PUNCTURE

ANSI
Probe



PROP 65



ENDURA® 378TXTVBG | XS - 3XL

Multi-feature gloves with extreme cold and cut protection, oil / water resistance, and vibration-dampening

-25°C
(-13°F)



ANSI
A6
CUT



ANSI / ISEA 138
2

ANSI
4
PUNCTURE

ANSI
Probe



PROP 65



ENDURA® 378GKGTVE | XS - 3XL

Economy multi-feature leather gloves featuring cut resistance and vibration damping



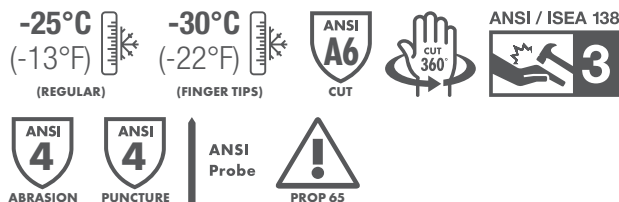
ENDURA® 378KGTVB | XS - 3XL

Everyday multi-feature glove with high cut resistance, vibration dampening, and oil / water protection



ENDURA® 378KMT4P | XS - 3XL

Maximum impact resistant multi-hazard gloves with extra fingertip insulation and vibration dampening



CLUTCH GEAR® MXGKGHTVB | S - 3XL

Hi-viz cut-resistant mechanics gloves with adjustable wrist closures





superiorglove®

S18WTLFN

CUT LEVEL
A4

PUNCTURE
3

-10°C



String Krit





**Water repellant
gloves to keep
hands dry + warm**



**DEXTERITY® SNTAPVC
S - 2XL**

Lightweight gloves with palm coating
for steady grip



**-5°C
(23°F)**



**DEXTERITY® SNTAPVCFB
S - 2XL**

Extended palm coating for more
water resistance and a steady grip



**-5°C
(23°F)**



**DEXTERITY® SNTAPVCD
S - 2XL**

Doubleweight finger insulation for
extra warmth and extended palm
coating for a steady grip



**-20°C
(-4°F)**



Fight freezing temperatures with minimal bulk

This family of ultra thin gloves are highly dexterous, provide 360° cut protection, and a steady grip in wet / oil conditions.



TENACTIV™ S18WTLFN
6 - 12



TENACTIV™ S18TATLFN
7 - 12

Fully waterproof cut protection for wet conditions



Cut protection for dry conditions





String Knit



DEXTERITY® SKG/PXNE | 6 - 11

Arc flash rated FR winter gloves with high cut resistance and heat protection

-5°C
(23°F)



DEXTERITY® TKTAGLX | S - 3XL

Water-resistant winter gloves with a strong, steady grip

-5°C
(23°F)



ANSI
Probe



EMERALD CX® SCXTAPVC | S - 2XL

High 360° cut protection gloves that keep hands warm and dry down to -5°C / 23°F

-5°C
(23°F)



ANSI
Probe





Get help reducing hand injuries

Request a free 1-on-1 consultation with a hand safety specialist. We'll work together to reduce or eliminate hand safety hazards – all free of charge.

- Have fewer and less severe injuries
- Lower both injury and PPE costs
- Increase worker productivity
- Build an effective hand safety program





SIZE
L

NORTH SEA 


superiorglove®

#N230CR



chemical



Water and chemical resistant with steady grip

These gloves feature a nitrile coating that resists oil and water and stays flexible even in extremely cold conditions. They are textured to ensure a steady grip on wet or oily surfaces.



**NORTH SEA™ N230CR
S - 2XL**

Lightweight jersey lining



**NORTH SEA™ N230FL
S - 2XL**

Fleece winter lining



**NORTH SEA™ N230FLK
S - 2XL**

Fleece winter lining with knit cuffs





NORTH SEA™ NS330 | L

Fitted water and chemical resistant gloves for retaining warmth that won't stiffen in cold temperatures

-15°C
(5°F)   **CFIA**



NORTH SEA™ NS300B | L

Loose fitted water and chemical resistant gloves for easy on and off that won't stiffen in cold temperatures

-5°C
(23°F)   **CFIA**



NORTH SEA™ NS230PU | M - 2XL

Polyurethane gloves that resist water and chemicals with winter lining for extra warmth

-15°C
(5°F)    **ANSI Probe**

ABRASION

PUNCTURE

ANSI
Probe



CHEMSTOP™ S15KGVNFVB | 7 - 11

Hi-viz medium impact protection gloves that also resist cuts, water, and chemicals

-5°C
(23°F)       **ANSI Probe**

CUT

CUT
360°

ANSI / ISEA 138

2

ABRASION

PUNCTURE

ANSI
Probe



Low Hazard





ENDURA® 378GKTTL | XS - 2XL

Durable leather gloves for warmth down to -15°C / 5°F

Our economical choice for all round safety gloves that keep hands warm down to -15°C / 5°F. With their thermal lining and tough abrasion-resistant leather, these gloves will keep workers' hands warm and safe in winter conditions.

-15°C
(5°F)



ABRASION



PUNCTURE

ANSI
Probe



PROP 65

WARNING: Known to the State of California to cause cancer, birth defects, or other reproductive harm. For more information, go to P65warnings.ca.gov



ENDURA® 378AFL | S - XL

Durable leather gloves for warmth down to -5°C / 23°F



ENDURA® 378GOTT | XS - 2XL

Hi-viz leather gloves for warmth down to -30°C / -22°F



ENDURA® 378GOBD | XS - 3XL

Oil/water repellent leather gloves with knitted cuffs that lock in warmth



ENDURA® 76BFTL | L

One size classic fitter gloves with leather palms and fingers for added durability





ENDURA® 66BRBOA | L, XL

L-XL classic fitter gloves with leather palms and fingers for added durability

-20°C
(-4°F)



PUNCTURE

ANSI
Probe



PROP 65



ENDURA® 378GHVTL | S - 2XL

Hi-viz warmth with retro-reflective stripes and leather palms/fingers for durability

-30°C
(-22°F)



PUNCTURE

ANSI
Probe



PROP 65



CLUTCHGEAR® MXGCETFL | S - 2XL

Durable but flexible mechanics gloves with leather palms

-20°C
(-4°F)



ABRASION



PROP 65



ENDURA® 678GDTLK | XS - 2XL

Extreme cold protection with water resistance, oil repellent palms, and touchscreen compatibility

-45°C
(-49°F)



PROP 65



PROP 65



ENDURA® 304BOA | L

Durable mitts built for extreme cold weather protection down to -35°C / -31°F

-35°C
(-31°F)



ABRASION



PUNCTURE

ANSI
Probe



PROP 65



SNOWFORCE™ SNOWD200L | L

Gauntlet cuff mitts with removable lining for extreme protection down to -45°C / -49°F

-45°C
(-49°F)



PROP 65



Try before you buy!

Sample our gloves to find the best protection for your team. Visit superiorglove.com and request your free samples today--it's as easy as 1, 2, 3!

1. Add products to your box
2. Complete the sample request form
3. Receive your samples





Apparel





Apparel



SUPERA™ SHJB | S - 4XL

Battery powered jacket and gloves for extra warmth in frigid environments*



SUPERA™ SHJHV | S - 4XL

Hi-viz battery powered jacket and gloves for extra warmth in frigid environments*



ENDURA® 378KGHTL | S - 3XL

Cut-resistant goatskin heated drivers gloves lined with 3M Thinsulate™ and compatible with SHJHV and SHJB



*Jackets are paired with our Endura® 378KGHTL gloves that can connect to the battery to provide additional warmth to hands.



POWERED BY A DURABLE RECHARGEABLE BATTERY

Jacket with Gloves

Jacket Only

Gloves Only

Up to 3.5 hours

Up to 4.5 hours

Up to 12 hours



SUPERA™ NWKVFR | ONE SIZE

Fire-resistant neck gaiter that is ultra soft and non-irritating for all-day comfort



SUPERA™ WCKVFR | ONE SIZE

Fire-resistant watch cap that is ultra soft and non-irritating for all-day comfort



SUPERA™ BAKVFR | ONE SIZE

Fire-resistant balaclava that is ultra soft and non-irritating for all-day comfort



SUPERA™ SXNMCM12 | M - XL

Waterproof socks with liners that wick away moisture to keep feet dry





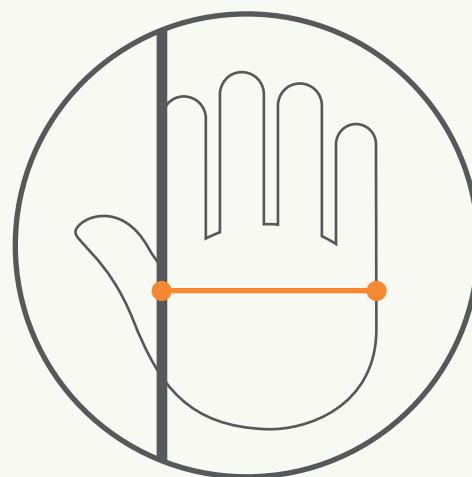
Additional Resources

GLOVE SIZING GUIDE

A proper fit is extremely important. An uncomfortable fit causes hand fatigue and ultimately could lead to a potential workplace hazard.

Measure the width of your hand from the base of your first finger and across your knuckles.

5 / 2XS	50 mm / 2 inches	9 / L	101 mm / 4 inches
6 / XS	63 mm / 2.5 inches	10 / XL	113 mm / 4.5 inches
7 / S	75 mm / 3 inches	11 / 2XL	126 mm / 5 inches
8 / M	88 mm / 3.5 inches	12 / 3XL	140 mm / 5.5 inches



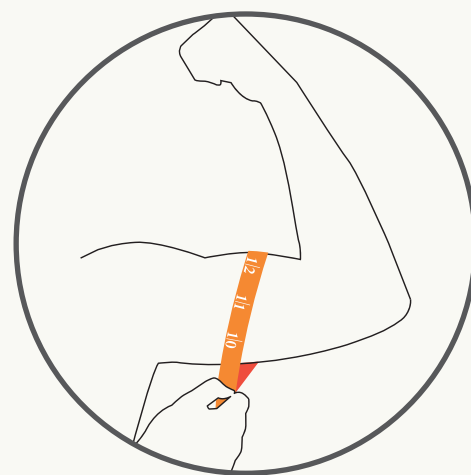
SLEEVE SIZING GUIDE

To find the best fit, measure the circumference of your bicep and choose sizing according to the chart below.

Sleeves come in multiple lengths.

2XS	250 mm / 9.75 inches	L	295 mm / 11.75 inches
XS	260 mm / 10.25 inches	XL	370 mm / 14.5 inches
S	265 mm / 10.5 inches	2XL	450 mm / 17.5 inches
M	280 mm / 11 inches		

For a more natural fit, sleeves come in a tapered version which provide better comfort and staying power. Tapered sleeves are designed to fit the contours of your arm and won't lose shape due to stretching







superiorglove®