

**Elanco™****Micotil™ 300****250 mL****(tilmicosin injection)**

300 mg tilmicosin, USP as tilmicosin phosphate per mL

For Subcutaneous Use in Cattle and Sheep Only

Solo Para Uso Subcutáneo en Ganado Vacuno y Ovino

Administer only with a tube-fed safety syringe. Do not use in automatically powered syringes, single-use syringes, or other delivery devices. Contact Elanco at 1-800-428-4441, or your distributor, for a tube-fed safety syringe for use with this product.

Administrar únicamente con una jeringa de seguridad con tubo. No administrar con jeringas accionadas automáticamente, jeringas de un solo uso u otros dispositivos de aplicación. Contactar a Elanco al 1-800-428-4441, o al distribuidor, para obtener una jeringa de seguridad con tubo para usar con este producto.

**Caution:** Federal law restricts this drug to use by or on the order of a licensed veterinarian.

**HUMAN WARNINGS:** Not for human use. Injection of this drug in humans has been associated with fatalities. Keep out of reach of children. Administer only with a tube-fed safety syringe. Do not use in automatically powered syringes, single-use syringes, or other delivery devices. Exercise extreme caution to avoid accidental self-injection. In case of human injection, consult a physician immediately and apply ice or cold pack to injection site while avoiding direct contact with the skin. Emergency medical telephone numbers are 1-800-722-0987 or 1-800-428-4441. Avoid contact with skin, eyes, or mucous membranes.

**NOTE TO THE PHYSICIAN:** The cardiovascular system is the target of toxicity and should be monitored closely. Cardiovascular toxicity may be due to calcium channel blockade. In dogs, administration of intravenous calcium offset Micotil-induced tachycardia and negative inotropy (decreased contractility). Dobutamine partially offset the negative inotropic effects induced by Micotil in dogs.  $\beta$ -adrenergic antagonists, such as propranolol, exacerbated the negative inotropy of Micotil in dogs. Epinephrine potentiated lethality of Micotil in pigs. This antibiotic persists in tissues for several days.

**ADVERTENCIAS PARA EL SER HUMANO:** Este producto no es para uso humano. La inyección de este medicamento al ser humano se ha asociado con muertes. Mantenga fuera del alcance de los niños. Utilice únicamente con una jeringa de seguridad con tubo. No use en jeringas operadas automáticamente, jeringas de un solo uso u otros dispositivos de aplicación. Proceda con extrema cautela para evitar la autoinyección accidental. En caso de inyección en seres humanos, consulte inmediatamente a un médico y aplique hielo o una compresa fría en el lugar de la inyección, evitando el contacto directo con la piel. Los números de teléfono para emergencias médicas son 1-800-722-0987 o 1-800-428-4441. Evite el contacto con la piel, los ojos o las membranas mucosas.

**NOTA PARA EL MÉDICO:** El sistema cardiovascular es el blanco de la toxicidad y debe vigilarse estrechamente. La toxicidad cardiovascular puede deberse al bloqueo de los canales de calcio. En los perros, la administración intravenosa de calcio compensó la taquicardia y los efectos inotrópicos negativos (reducción de la contractilidad) inducidos por Micotil (tilmicosina inyectable). La dobutamina compensó parcialmente los efectos inotrópicos negativos inducidos por Micotil en perros. Los antagonistas  $\beta$ -adrenérgicos, como propranolol, exacerbaron el inotropismo negativo de Micotil en los perros. La epinefrina potenció la letalidad de Micotil en cerdos. Este antibiótico persiste en los tejidos por varios días.

**Description:** Micotil (tilmicosin injection) is a solution of the antibiotic tilmicosin. Each mL contains 300 mg of tilmicosin, USP as tilmicosin phosphate in 25% propylene glycol, phosphoric acid as needed to adjust pH and water for injection, Q.S. Tilmicosin, USP is produced semi-synthetically and is in the macrolide class of antibiotics.

**Indications:** Micotil is indicated for the treatment of bovine respiratory disease (BRD) associated with *Mannheimia haemolytica*, *Pasteurella multocida* and *Histophilus somni* and for the treatment of ovine respiratory disease (ORD) associated with *Mannheimia haemolytica*. Micotil is indicated for the control of respiratory disease in cattle at high risk of developing BRD associated with *Mannheimia haemolytica*.

**Micotil must be used with the quick-fit connector made specifically for its use. Contact Elanco or your distributor for this equipment. Read product labeling, including Safe Handling Practices, before use.**

**Micotil debe usarse con un conector de ajuste rápido hecho específicamente para su uso. Contacte a Elanco o al distribuidor para obtener este equipo. Lea la ficha técnica, incluidas las Prácticas De Manejo Seguro, antes de usar.**

**Dosage and Administration:** Follow instructions for activation of the shroud before first usage.

**Inject Subcutaneously in Cattle and Sheep Only. See Safe Handling Practices, Contraindications, and Warnings prior to use.** In cattle, administer a single subcutaneous dose of 10 to 20 mg/kg of body weight (1 to 2 mL/30 kg or 1.5 to 3 mL per 100 lbs). In sheep greater than 15 kg, administer a single subcutaneous dose of 10 mg/kg of body weight (1 mL/30 kg or 1.5 mL per 100 lbs).

Do not inject more than 10 mL per injection site. If no improvement is noted within 48-hours, the diagnosis should be reevaluated.

For cattle and sheep, injection under the skin in the neck is suggested. If not accessible, inject under the skin behind the shoulders and over the ribs.

**Note:** Swelling at the subcutaneous site of injection may be observed.

**Contraindications:** Do not use in automatically powered syringes, single-use syringes, or other delivery devices not specified in the labeling. Do not administer intravenously to cattle or sheep. Intravenous injection in cattle or sheep will be fatal. Do not use in lambs less than 15 kg body weight. Do not administer to animals other than cattle or sheep. Injection of tilmicosin has been shown to be fatal in swine and non-human primates. Death following exposure to tilmicosin injection has been reported to FDA/CVM in goats, rabbits, pheasants, pigs, dogs, deer, cats, alpacas and horses.

**Warnings:**

**Residue Warnings:** Animals intended for human consumption must not be slaughtered within 42 days of the last treatment. Not for use in lactating dairy cattle 20 months of age or older. Use of tilmicosin in this class of cattle may cause milk residues. Not for use in lactating ewes producing milk for human consumption.

**For Subcutaneous Use in Cattle and Sheep Only. Administer only with a tube-fed safety syringe. Do not use in automatically powered syringes, single-use syringes, or other delivery devices. Contact Elanco at 1-800-428-4441, or your distributor, for a tube-fed safety syringe for use with this product.**

**Solo Para Uso Subcutáneo en Ganado Vacuno y Ovino. Administrar únicamente con una jeringa de seguridad con tubo. No administrar con jeringas accionadas automáticamente, jeringas de un solo uso u otros dispositivos de aplicación. Contactar a Elanco al 1-800-428-4441, o al distribuidor, para obtener una jeringa de seguridad con tubo para usar con este producto.**

**Precautions:** The effects of tilmicosin on bovine and ovine reproductive performance, pregnancy and lactation have not been determined. Intramuscular injection will cause a local reaction which may result in trim loss of edible tissue at slaughter.

**Adverse Reactions:** The following adverse reactions have been reported post-approval: In cattle: injection site swelling and inflammation, lameness, collapse, anaphylaxis/anaphylactoid reactions, decreased food and water consumption, and death.

In sheep: dyspnea and death.

For additional information about reporting adverse drug experiences for animal drugs, contact FDA at 1-888-FDA-VETS or <http://www.fda.gov/reportanimalae>

**Clinical Pharmacology:** A single subcutaneous injection of Micotil (tilmicosin injection) at 10 mg/kg of body weight dose in cattle resulted in peak tilmicosin levels within one hour and detectable levels (0.07  $\mu$ g/mL) in serum beyond 3 days. However, lung concentrations of tilmicosin remained above the tilmicosin MIC 95% of 3.12  $\mu$ g/mL for *Mannheimia haemolytica* for at least 3 days following the single injection. Serum tilmicosin levels are a poor indicator of total body tilmicosin. The lung/serum tilmicosin ratio in favor of lung tissue appeared to equilibrate by 3 days post-injection at approximately 60. In a study with radioactive tilmicosin, 24% and 68% of the dose was recovered from urine and feces respectively over 21 days. After a single subcutaneous injection of Micotil at 10 mg/kg of body weight, tilmicosin concentrations in excess of 4  $\mu$ g/mL were maintained in the alveolar macrophages and neutrophils of most cattle for at least 10 days. The clinical relevance of these findings has not been determined.

**Microbiology:** Tilmicosin has an *in vitro* antibacterial spectrum that is predominantly Gram-positive with activity against certain Gram-negative microorganisms. *In vitro* activity against several *Mycoplasma* species has also been observed.

**Effectiveness:** In a multi-location field study, 1508 calves with naturally occurring BRD were treated with Micotil. Responses to treatment were compared to saline-treated controls. A cure was defined as a calf with normal attitude and activity, normal respiration, and a rectal temperature of  $<104^{\circ}$ F on Day 13. The cure rate was significantly higher ( $P=0.004$ ) in Micotil-treated calves (63.1%) compared to saline-treated calves (29.2%). During the treatment phase of the study, there were 10 BRD-related deaths in the Micotil-treated calves compared to 47 in the saline-treated calves.

**Animal Safety:** A safety study was conducted in feeder calves receiving subcutaneous doses of 20, 30, 40, or 60 mg/kg of body weight, injected 3 times at 72-hour intervals. Death was not seen in any of the treatment groups. Injection site swelling and mild hemorrhage at the injection site were seen in animals in all dosage groups. Lesions were described as being generally more severe and occurred at higher frequency rates in the animals treated with higher doses of tilmicosin. Lameness associated with the injection site was noted in two of twenty-four animals (one animal in the 30 mg/kg body weight treatment group and one animal in the 60 mg/kg treatment group). No other drug related lesions were observed macroscopically or microscopically. Decreases in food and water consumption were noted in all treatment groups compared to the control group.

A separate safety study conducted in feeder calves, subcutaneous doses of 10, 30, or 50 mg/kg of body weight, injected 3 times at 72-hour intervals did not cause any deaths. Edema at the site of injection was noted. The only lesion observed at necropsy was minimal myocardial necrosis in some animals dosed at 50 mg/kg.

In an additional safety study, subcutaneous doses of 150 mg/kg body weight injected at 72-hour intervals resulted in death of two of the four treated animals. Edema was marked at the site of injection. Minimal myocardial necrosis was the only lesion observed at necropsy. Deaths of cattle have been observed with a single intravenous dose of 5 mg/kg of body weight.

In sheep, single subcutaneous injections of 10 mg/kg body weight dose did not cause any deaths and no adverse effects of tilmicosin were observed on blood pressure, heart rate, or respiratory rate.

**Toxicology:** The heart is the target of toxicity in laboratory and domestic animals given Micotil (tilmicosin injection) by oral or parenteral routes. The primary cardiac effects are increased heart rate (tachycardia) and decreased contractility (negative inotropy). Cardiovascular toxicity may be due to calcium channel blockade.

Upon subcutaneous injection, the acute median lethal dose of tilmicosin in mice is 97 mg/kg, and in rats is 185 mg/kg of body weight. Given orally, the median lethal dose is 800 mg/kg and 2250 mg/kg body weight in fasted and nonfasted rats, respectively.

No compound-related lesions were found at necropsy.

In dogs, intravenous calcium offset Micotil-induced tachycardia and negative inotropy, restoring arterial pulse pressure. Dobutamine partially offset the negative inotropic effects induced by Micotil in dogs.  $\beta$ -adrenergic antagonists, such as propranolol, exacerbated the negative inotropy of Micotil in dogs.

In monkeys, a single intramuscular dose of 10 mg/kg body weight caused no signs of toxicity. A single dose of 20 mg/kg body weight caused vomiting and 30 mg/kg body weight caused the death of the only monkey tested.

In swine, intramuscular injection of 10 mg/kg body weight caused increased respiration, emesis, and a convulsion, 20 mg/kg body weight resulted in mortality in 3 of 4 pigs, and 30 mg/kg body weight caused the death of all 4 pigs tested. Injection of 4.5 and 5.6 mg/kg body weight intravenously followed by epinephrine, 1 mL (1:1000) intravenously 2 to 6 times, resulted in all pigs injected. Pigs given 4.5 mg/kg and 5.6 mg/kg body weight intravenously with no epinephrine all survived.

These results suggest intravenous epinephrine may be contraindicated.

Results of genetic toxicology studies were all negative. Results of teratology and reproduction studies in rats were negative.

The no effect level in dogs after daily oral doses for up to one year is 4 mg/kg of body weight.

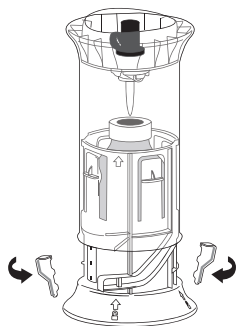
## Instructions for Activation of the Shroud

Before first usage activate the shroud-vial-system as shown in the pictures.

Administer only with a tube-fed safety syringe. Do not use in automatically powered syringes, single-use syringes, or other delivery devices. This product must be used with the quick-fit connector made specifically for use with Micotil (tilmicosin injection) that attaches to the shroud fitting. To obtain a tube-fed safety syringe and quick-fit connector, contact Elanco at 1-800-428-4441, or your distributor.

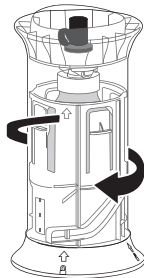
### Step 1.

Twist the two tamper-evident tabs to break them off the Shroud Base.



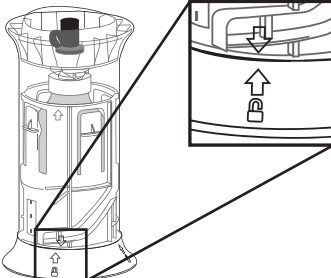
### Step 2.

Rotate the Shroud Top through a quarter-turn clockwise. The spike will pierce the vial closure, and the Shroud Top will lock into its final position by an audible "click".



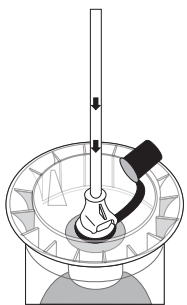
### Step 3.

The correct final position can be confirmed by the alignment of the 2 arrows as shown in the picture.



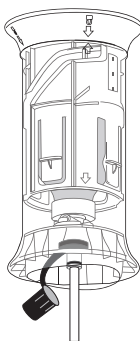
### Step 4.

Remove the flexible cap from the fluid connection. Attach the quick-fit connector to tubing if not already attached. Push the quick-fit connector downwards onto the shroud fitting until it clicks into place.

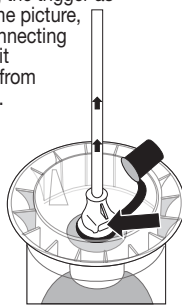


### Step 5.

Invert the Micotil Shroud, then prime the tube-fed safety syringe following manufacturer's instructions.



Return shroud to upright position after finishing operation. Leave tubing attached to tube-fed safety syringe and quick-fit connector until dosing equipment has been removed from the shroud. Remove dosing equipment by pushing the trigger as shown in the picture, then disconnecting the quick-fit connector from the shroud.



Micotil should not be stored in dosing equipment. Dosing equipment should be disconnected from the shroud after each use. Store product upright. The dosing equipment should be cleaned according to the manufacturer's instructions. Avoid contact with skin, eyes, or mucous membranes.

## SAFE HANDLING PRACTICES WHEN USING MICOTIL 300 (tilmicosin injection)

Please read this information before you start using Micotil.

This information is a summary and is not intended to take the place of discussions with your veterinarian. Micotil can only be prescribed by a licensed veterinarian who has information specific to your operation. You should discuss with your veterinarian how to use Micotil, human warnings associated with the product and recommended safe handling and use practices.

For emergency medical information call 1-800-722-0987 or 1-800-428-4441.

If you have any questions about Micotil, talk with your veterinarian or call Elanco at 1-800-428-4441. To report an adverse drug event contact Elanco at 1-800-428-4441.

### 1. WHAT ARE THE POSSIBLE EFFECTS OF ACCIDENTAL HUMAN INJECTION?

Human injections of Micotil have been associated with fatalities. Clinical signs from human exposure include off taste in the mouth, nausea, headache, dizziness, rapid heart rate, chest pain, anxiety, or lightheadedness. Local reactions such as injection site pain, bleeding, swelling or inflammation have been reported.

**Storage Conditions:** Store at or below 86°F (30°C). Protect from direct sunlight. Use within 84 days of first puncture. Store upright between product dispensing. Disconnect and clean dosing equipment for storing as per manufacturer's instructions.

Date of first puncture: \_\_\_\_\_

Conservar a 86 °F (30 °C). Proteger de la luz solar directa. Usar dentro de los 84 días de la primera punción. Guardar en posición vertical entre cada suministro del producto. Desconectar y limpiar el dispositivo de dosificación para el almacenamiento según las instrucciones del fabricante.

Fecha de la primera punción: \_\_\_\_\_

To report adverse effects, access medical information, or obtain additional product information, call 1-800-428-4441.

Literature for this product should be attached. If it is missing, call 1-800-428-4441.

La bibliografía para este producto debe encontrarse anexa. Si faltase, llame al 1-800-428-4441.

**How Supplied:** Micotil (tilmicosin injection) is supplied in 250 mL multi-dose amber glass bottles in a non-removable polymer protector.

Manufactured for: **Elanco US, Inc. Indianapolis, IN 46221**

Revised: **08/2025**

Micotil, Elanco and the diagonal bar logo are trademarks of Elanco or its affiliates.

© 2025 Elanco or its affiliates

### 2. WHAT SHOULD I DO IN THE CASE OF ACCIDENTAL HUMAN INJECTION?

- Immediately seek medical attention.
- Apply ice or cold pack to injection site, while avoiding direct contact with the skin, and transport immediately to a hospital.
- Call 1-800-722-0987 or 1-800-428-4441 for further emergency information.

### 3. WHAT SHOULD MY PHYSICIAN KNOW IN THE CASE OF ACCIDENTAL HUMAN INJECTION?

- The cardiovascular system is the target of toxicity and should be monitored closely.
- Cardiovascular toxicity may be due to calcium channel blockade.
- Intravenous calcium administration reversed the cardiovascular effects of Micotil in dogs and may provide benefit in patients exhibiting low blood pressure (hypotension) or rapid heart rate (tachycardia).
- Dobutamine improved some of the cardiac function in dogs given Micotil.
- Epinephrine increased the toxicity of Micotil in pigs, resulting in death.
- Propranolol (a beta-adrenergic antagonist) further decreased cardiac function in dogs given Micotil.
- The active ingredient in Micotil is tilmicosin phosphate and persists in tissue for several days.
- Call 1-800-722-0987 or 1-800-428-4441 for further emergency information.

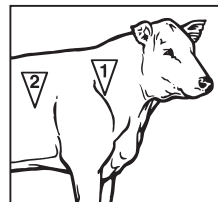
### 4. WHAT ARE THE PROPER WAYS TO HANDLE AND STORE MICOTIL?

Store at or below 86°F (30°C), out of direct sunlight, in a safe location, not easily accessible to the general public. Use within 84 days of first puncture. Store upright between product dispensing. Disconnect and clean dosing equipment for storing as per manufacturer's instructions.

- Avoid contact with skin, eyes, or mucous membranes.
- Read, understand, and follow all label use directions.
- Wash hands thoroughly with soap and water after handling.

### 5. WHAT ARE THE PROPER METHODS FOR ADMINISTERING MICOTIL?

- Properly restrain animals prior to administration.
- Work in a team, or if alone, advise someone of your location and how long you plan to be there.
- For subcutaneous use. Administer only with a tube-fed safety syringe. Do not use in automatically powered syringes, single-use syringes, or other delivery devices. Contact Elanco at 1-800-428-4441, or your distributor, for a tube-fed safety syringe for use with this product.
- Use a 1/2-inch to 5/8-inch, 18- to 16-gauge needle.
- With a single hand on the safety syringe insert the needle subcutaneously, at a top-down angle, while avoiding penetration of underlying muscle.
- For cattle and sheep, injection under the skin in the neck is suggested. If not accessible, inject under the skin behind the shoulders and over the ribs.
- In cattle, administer a single subcutaneous dose of 1.5 to 3.0 mL of Micotil (tilmicosin injection) per 100 lbs of body weight, in either of the two areas noted in the adjacent drawing.
- For beef cattle, Beef Quality Assurance recommends injection site 1, unless this site is inaccessible or places the operator in a potentially dangerous situation.
- Wash hands thoroughly with soap and water after administration.
- Do not administer intravenously (IV) as IV administration will be fatal.
- Intramuscular injection will cause a local reaction, which may result in trim loss.
- Do not inject more than 10 mL per injection site.
- Do not use in lambs less than 15 kg body weight.



### 6. WHAT ARE SAFE WAYS TO REMOVE AND CHANGE NEEDLES?

- Always follow the manufacturer's instruction of how to safely remove and change needles from the safety syringe.
- Plan for the safe handling and disposal of needles before use.
- Keep the needle capped until ready to use.
- Avoid recapping a used needle.
- To safely remove used needles, use tools appropriate for the specific type of safety syringe. Do not remove a used needle with your fingers.
- Dispose used needles in an appropriate sharps disposal container. Do not overfill sharps containers and do not put your fingers into a sharps container.
- Never place loose needles in household or public trash cans.

### PRÁCTICAS DE MANEJO SEGURO CUANDO SE UTILIZA MICOTIL 300 (tilmicosina inyectable)

Lea esta información antes de comenzar a utilizar Micotil. Esta información es un resumen y no pretende sustituir que lo analice con su veterinario. Micotil solamente puede ser prescrito por un médico veterinario autorizado que tenga la información específica de su intervención. Usted deberá analizar con su veterinario cómo usar Micotil, las advertencias para seres humanos asociadas con este producto, y las

prácticas de manipulación y uso seguras recomendadas. Para información médica de emergencia, llame al 1-800-722-0987 o 1-800-428-4441. Si tiene alguna pregunta acerca de Micotil, hable con su veterinario o llame a Elanco al teléfono 1-800-428-4441. Para reportar algún evento adverso del medicamento, póngase en contacto con Elanco llamando al 1-800-428-4441.

#### 1. ¿CUÁLES SON LOS POSIBLES EFECTOS DE UNA INYECCIÓN ACCIDENTAL EN UN SER HUMANO?

Las inyecciones de Micotil al ser humano se asociaron con fallecimientos. Los signos clínicos de la exposición en seres humanos incluyen sabor desagradable en la boca, náuseas, dolor de cabeza, mareos, latidos rápidos, dolor en el pecho, ansiedad o atontamiento. Se han comunicado reacciones locales como dolor, sangrado, tumefacción o inflamación en el sitio de la inyección.

#### 2. ¿QUÉ DEBO HACER EN CASO DE UNA INYECCIÓN ACCIDENTAL A UN SER HUMANO?

- Busque atención médica inmediatamente.
- Aplique hielo o una compresa fría al sitio de la inyección, evitando el contacto directo con la piel, y transporte al paciente inmediatamente a un hospital.
- Llame al 1-800-722-0987 o al 1-800-428-4441 para obtener más información de emergencia.

#### 3. ¿QUÉ DEBE SABER MI MÉDICO EN CASO DE UNA INYECCIÓN ACCIDENTAL A UN SER HUMANO?

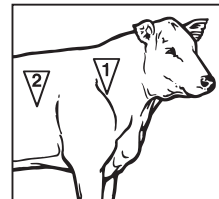
- El sistema cardiovascular es el blanco de la toxicidad y debe monitorearse estrechamente.
- La toxicidad cardiovascular puede deberse a bloqueo de los canales de calcio.
- La administración intravenosa de calcio revirtió los efectos cardiovasculares de Micotil (tilmicosina inyectable) en los perros y puede ofrecer beneficios a los pacientes que presentan presión arterial baja (hipotensión) o latidos rápidos (taquicardia).
- La dobutamina mejoró parcialmente la función cardíaca en los perros que recibieron Micotil.
- La epinefrina aumentó la toxicidad de Micotil en los cerdos, causándoles la muerte.
- Propranolol (un antagonista  $\beta$ -adrenérgico) disminuyó aún más la función cardíaca en perros tratados con Micotil.
- El ingrediente activo de Micotil es el fosfato de tilmicosina y persiste en los tejidos por varios días.
- Llame al 1-800-722-0987 o al 1-800-428-4441 para obtener más información de emergencia.

#### 4. ¿CUÁLES SON LAS FORMAS ADECUADAS DE MANEJO Y ALMACENAMIENTO DE MICOTIL?

- Almacenar a temperatura de 86 °F (30 °C) o menor, fuera de la luz solar directa, en un sitio seguro que no esté fácilmente accesible al público en general. Usar dentro de los 84 días de la primera punción. Guardar en posición vertical entre cada suministro del producto. Desconectar y limpiar el dispositivo de dosificación para el almacenamiento según las instrucciones del fabricante.
- Evitar el contacto con la piel, los ojos o las membranas mucosas.
- Leer, entender y cumplir con todas las instrucciones para el uso incluidas en la etiqueta.
- Lavarse las manos minuciosamente con agua y jabón después de la manipulación.

#### 5. ¿CUÁLES SON LOS MÉTODOS ADECUADOS PARA LA ADMINISTRACIÓN DE MICOTIL?

- Sujetar a los animales en forma apropiada antes de la administración.
- Trabajar en equipo, o si está solo, informar a alguien de su ubicación y del tiempo que piensa estar allí.
- Para uso subcutáneo. Administrar únicamente con una jeringa de seguridad conectada a un tubo. No utilizar jeringas operadas automáticamente, jeringas de un solo uso u otros dispositivos de aplicación. Contactar a Elanco al 1-800-428-4441, o al distribuidor, para obtener una jeringa de seguridad con tubo para usar con este producto.
- Utilizar una aguja de 1/2 pulgada a 5/8 de pulgada, del calibre 18 a 16.
- Con una sola mano en el dispositivo de dosificación, insertar la aguja subcutáneamente, en un ángulo de arriba hacia abajo, evitando penetrar el músculo subyacente.
- Para bovinos y ovinos se recomienda la inyección subcutánea en la región del cuello. Si no fuese accesible, inyectar debajo de la piel detrás de los hombros y sobre las costillas.
- En bovinos, administrar una sola dosis subcutánea de 1.5 a 3.0 ml de Micotil por cada 100 libras de peso, en cualquiera de las dos áreas marcadas en el dibujo anexo.
- Para el ganado de carne, la Garantía de Calidad de Carne del Bovino recomienda el sitio de inyección 1, a menos que este sitio sea inaccesible o ponga al operador en una situación potencialmente peligrosa.
- Lavarse las manos minuciosamente con agua y jabón después de la administración.
- No administrar por vía intravenosa (IV) ya que la administración IV causará la muerte.
- La inyección intramuscular causará una reacción local, que puede provocar la pérdida de cortes.
- No inyectar más de 10 ml por sitio de inyección.
- No usar en corderos de menos de 15 kg de peso.



#### 6. ¿CUÁLES SON LAS FORMAS SEGURAS DE RETIRAR Y CAMBIAR LAS AGUJAS?

- Seguir siempre las instrucciones del fabricante sobre cómo retirar y cambiar las agujas de la jeringa de seguridad de forma segura.
- Planificar la manipulación y eliminación segura de las agujas antes de su uso.
- Mantener la aguja tapada hasta el momento de su uso.
- Evitar volver a tapar una aguja usada.
- Para retirar de forma segura las agujas usadas, utilizar herramientas apropiadas según el tipo específico de jeringa de seguridad. Se debe evitar retirar una aguja usada con los dedos.
- Desechar las agujas usadas en un contenedor apropiado para la eliminación de objetos punzantes. No llenar en exceso los contenedores de objetos punzantes y no meter los dedos en dichos contenedores.
- No colocar nunca agujas sueltas en los cubos de basura domésticos o públicos.

Micotil, Elanco y el logo de la barra diagonal son marcas de Elanco o sus afiliadas.