
Tarver

Product Specifications	324
Product Options	325
Product Pages	335

TARVER PRODUCT SPECIFICATIONS

TOPS

- Laminate surfaces are 1 $\frac{1}{8}$ " HPL (high pressure laminate) and feature a matching 3mm softened PVC rim
- Veneer surfaces are 1 $\frac{1}{8}$ " plain sliced slipmatched cherry (Amber, Autumn, Mocha, Truffle), maple veneer (Brighton, Caramel, Honey, Natural), plain sliced bookmatched walnut veneer (Clear Walnut, Cordovan, Judicial), quarter cut walnut veneer (Almond, Portobello, Sable), quarter cut oak veneer (Sonoma), plank matched white oak veneer (Almond Rustic Oak, Clear Rustic Oak, Mocha Rustic Oak, Portico Rustic Oak, Portobello Rustic Oak, Sable Rustic Oak, Skyline Rustic Oak, Truffle Rustic Oak) and feature a matching 3mm softened wood rim
- When specifying Clear Walnut, a clear coat finish, the natural wood characteristics of walnut veneer are visible. These characteristics include, but are not limited to, color and woodgrain variation
- When specifying Clear Rustic Oak, a clear coat finish, the natural wood characteristics of white oak veneer are visible. These characteristics include, but are not limited to, color and woodgrain variation
- Grain direction runs left-to-right unless otherwise noted

TRESTLE BASE

- All bases consist of solid wood and metal components with visible fillet welds
- Wood is solid maple (Amber, Autumn, Brighton, Caramel, Cordovan, Honey, Judicial, Mocha, Natural, Sable, Truffle, Portobello, Sonoma, or Acorn/Almond), Painted solid maple (Designer White, Concrete, Cloud, Fog, Storm, Graphite, Cinder, Iron, Frosty White, Platinum Metallic, Satin Nickel) or solid white oak (Almond Rustic Oak, Clear Rustic Oak, Mocha Rustic Oak, Portico Rustic Oak, Portobello Rustic Oak, Sable Rustic Oak, Skyline Rustic Oak, Truffle Rustic Oak)
- Metal is available in paint colors shown on page 325
- Wire management is standard through conference bases
- The dimension of the wire management cutout on the leg for Tarver is a 2.5" square (63mm x 63mm)

FINISH APPLICATION

- All Veneer surfaces feature a semi-open pore matte finish

BUFFET CREDENZAS

- Available in laminate or veneer
- Buffet credenzas have a single finish option with a matching 3mm softened PVC rim
- $\frac{3}{4}$ " thick (19mm) worksurface
- Hinges and pulls available in (MB) Matte Black only
- Leveling glides are in black
- Doors feature a "shaker" style construction

MOBILE MARKER BOARD

- Magnetic marker board writing surface

CASTERS

- Black aluminum 4" diameter wheel with a black polyurethane tread
- Each caster has a single braking wheel

POWER/DATA ELECTRICAL SPECIFICATIONS

ROUND GROMMET (G10)

- NACG10EL features 2 120 volt receptacles and 2 Cat5E data ports and 6' AC cord rated at 15 amps; data ports are not pre-wired
- Field installable
- For conference tables only
- Black nylon
- 8 adapter plates are provided

DOUBLE PIVOTING M2X-B POWER GROMMET (G15A, G15B)

- Accommodates table thicknesses of $\frac{3}{4}$ "-1 $\frac{3}{4}$ "
- 1 touch door remains open during use
- 2 6 ft. power cords with 3-prong molded plug for each side
- Spill-proof
- Available in silver, black or white powder coat
- Corded units (standard and hardwire) have 2 72" long power cords (1 for each side) rated at 15 amps 120 volts
- Grommet comes with undersurface wire managers attached underneath conference top
- Field installable into a CUT-G15 (must be ordered)
- UL Listed
- G15A SIDE 1: 2 power outlets, 1 dual USB-A port, 1 HDMI and 1 blank data port SIDE 2: 2 power outlets, 1 dual USB-A port, 1 VGA and 1 blank data port
- G15B SIDE 1: 2 power outlets, 1 blank data port, 1 HDMI, and 1 USB A + C combo SIDE 2: 2 power outlets, 1 blank data port, 1 VGA and 1 USB-A + C combo

GLENBEIGH PIVOTING POWER GROMMET (G17A, G17B, G17C)

- Accommodates table thickness of $\frac{3}{4}$ "-1 $\frac{3}{4}$ "
- 10 ft. power cord with 3-prong molded plug
- Spill-proof
- Available in silver, black or white powder coat
- 15 amp, 120v (hardwire models)
- 10 ft. metal conduit (hardwire models)
- UL Listed
- G17A available with 2 power outlets
- G17B available with 1 power outlet and 1 USB-A + C combo port
- G17C available with 1 power outlet

POWER GROMMET (G23)

- Field installable when CUT-G23 option is specified
- Die-cast zinc in black or silver powder coat
- Includes 2 power outlets and 2 power USB ports
- Silver or black
- 9 foot, 15 amp cord
- UL Listed

PULL OPTIONS



Foursquare

MB Matte Black

HARDWARE PAINT

MB Matte Black

WOOD FINISHES

AC	Autumn	MHRO	Mocha Rustic Oak
AD	Almond	NM	Natural
ADRO	Almond Rustic Oak	PB	Portobello
CL	Caramel	PBRO	Portobello Rustic Oak
CW	Cordovan	PTRO	Portico Rustic Oak
DW	Judicial	SKRO	Skyline Rustic Oak
ERO	Clear Rustic Oak	SM	Sonoma
EW	Clear Walnut*	TF	Truffle
HN	Honey	TFRO	Truffle Rustic Oak
IM	Brighton	792	Sable
MC	Amber	792RO	Sable Rustic Oak
MH	Mocha		

*Clear Walnut not available on bases. Select AD Almond for the base coordinate

LAMINATE COLORS

WOODGRAIN LAMINATE

AC2	Autumn 2
AD	Almond
BZ	Brazilwood
CI	Chai
CL	Caramel
CW	Cordovan
DW	Judicial
HN2	Honey 2
IM	Brighton
KN	Kona
MC	Amber
MH	Mocha
NM	Natural
PB	Portobello
PC	Porcini
PT	Portico
SK	Skyline
SM	Sonoma
TF	Truffle
WL	Willow
792	Sable
793	Acorn*

SOLID LAMINATE

405	Designer White
419	Wallaby
425	Shadow
440	Cloud
457	Dapple
461	Graphite
462	Cinder
478	Platinum Grey
488	Frosty White
491	Designer White Linear
492	Cinder Linear

GALLERY LAMINATE

Grade 1 – 5% upcharge	
G1001	Citadel
G1011	Pepperdust
Grade 2 – 6% upcharge	
G1002	Planked Raw Oak
G1003	Evening Notte
G1004	Kirsche
G1005	Midnight Run
G1006	Sepia Walnut
G1007	Serotina
G1008	Timeless
G1009	White Nebbia
G1012	Phantom Ecru

See page 13 for Gallery program details and upcharges

*Acorn is the laminate complement to Clear Walnut finish

METAL AND WOOD BASE PAINT COLORS

405	Designer White
423	Concrete
440	Cloud
450	Fog
460	Storm
461	Graphite
462	Cinder
463	Iron
488	Frosty White
501	Platinum Metallic
503	Satin Nickel
EM	Clearcoat on Metal**

- The following paint colors will receive black screws: satin nickel, cinder, iron, graphite, concrete, and clearcoat on metal
- The following paint colors will receive silver screws: platinum, storm, cloud, frosty white, designer white, and fog

** Clearcoat is only available as a paint option on metal, not a wood paint option

GROMMET AND CUTOUT OPTIONS

Conference table tops are available with grommet or cutout options to accommodate electrical and data management solutions. If no grommet or cutout is desired, specify an X.

Round Grommet Option, Black

\$100 list upcharge per grommet location

- G10C Center
- G10E End
- G10LR Left, Right
- G10A All
- G10CE Center, End

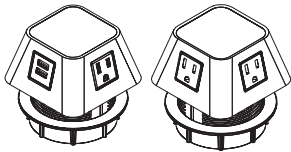


- Reference pages 327-328 for grommet locations



**NACG10EL
(Sold Separately)**

- NACG10EL electrical grommet is available as a substitute for G10 grommet, if desired
- Reference page 320 for pricing and details



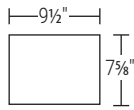
**NACG10AELPGB, NACG10AELPGW,
NACG10AELPGG, NACG10BELPGB,
NACG10BELPGW, and NACG10AELPGG
(Sold Separately)**

- NACG10A and NACG10B power/USB grommet is available as a substitute for G10 grommet, if desired
- Reference Electrical Addendum for pricing and details

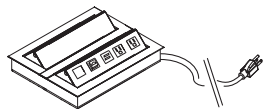
Cutout Option for 1 Touch Double Pivoting Power Grommet

\$40 list upcharge per cutout location

- CUT-G15C Center
- CUT-G15E End
- CUT-G15LR Left, Right
- CUT-G15A All
- CUT-G15CE Center, End



- Reference pages 329-330 for cutout locations of CUT-G15



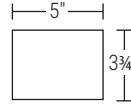
**NACG15AELPGS, NACG15AELHCS,
NACG15AELPGB, NACG15AELHCB,
NACG15AELPGW, and NACG15AELHCW
(Sold Separately)**

- Must order model NACG15AELPGS, NACG15AELHCS, NACG15AELPGB, NACG15AELHCB, NACG15AELPGW, or NACG15AELHCW to fit into CUT-G15 option
- Reference page 320 for pricing and details

Cutout Option for 1 Touch Pivoting Power Grommet

\$40 list upcharge per cutout location

- CUT-G17C Center
- CUT-G17E End
- CUT-G17LR Left & Right



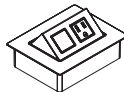
- Reference pages 331-332 for cutout locations of CUT-G17



**NACG17AELPGB, NACG17AELPGS, and
NACG17AELPGW (Sold Separately)**



**NACG17BELPGB, NACG17BELPGS, and
NACG17BELPGW (Sold Separately)**



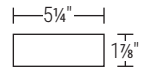
**NACG17CELPGB, NACG17CELPGS, and
NACG17CELPGW (Sold Separately)**

- Reference page 321 pricing and details

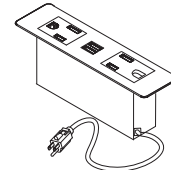
Cutout Option for G23 Power Grommet

\$40 list upcharge per cutout location

- CUT-G23C Center
- CUT-G23E End
- CUT-G23LR Left, Right



- Reference pages 333-334 for cutout locations of CUT-G23

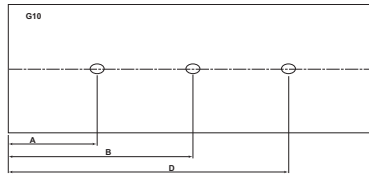


**NACG23ELB (Sold Separately)
NACG23ELS (Sold Separately)**

- Must order model NACG23ELB or NACG23ELS to fit into CUT-G23 option
- Reference page 322 pricing and details

TARVER - GROMMET LOCATIONS ON TOPS

- G10 grommets are shipped installed
- NACG10EL, NACG10AELPG*, and NACG10BELPG* electrical grommets are available as a substitute for G10 grommet, if desired



• G10 Round Grommet

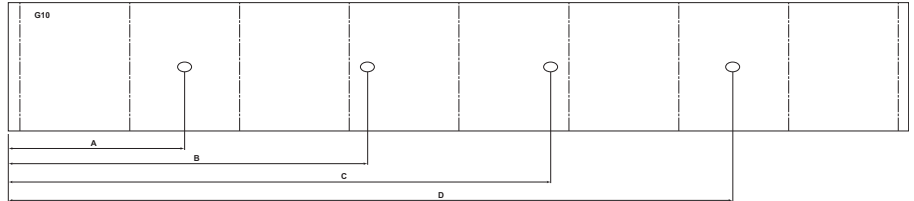
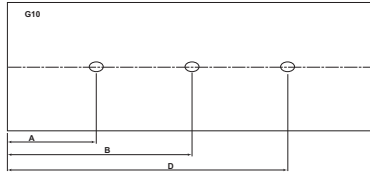


TABLE LENGTH (IN)

GROMMET LOCATION/OPTIONS	96"				120"				144"							
	A	B	C	D	A	B	C	D	A	B	C	D				
G10C CENTER	96"	—	47 ¹ / ₁₆ "	—	—	120"	—	48 ¹ / ₄ "	71 ¹ / ₁₆ "	—	—	144"	—	57 ¹ / ₈ "	86 ¹ / ₁₆ "	—
G10E END	96"	25 ³ / ₁₆ "	—	—	—	120"	24 ¹ / ₁₆ "	—	—	—	—	144"	27 ¹ / ₁₆ "	—	—	—
G10LR LEFT, RIGHT	96"	25 ³ / ₁₆ "	—	—	70 ³ / ₄ "	120"	24 ¹ / ₁₆ "	—	—	94 ⁷ / ₈ "	144"	27 ¹ / ₁₆ "	—	—	116 ¹ / ₁₆ "	
G10A ALL	96"	25 ³ / ₁₆ "	47 ¹ / ₁₆ "	—	70 ³ / ₄ "	120"	24 ¹ / ₁₆ "	48 ¹ / ₄ "	71 ¹ / ₁₆ "	94 ⁷ / ₈ "	144"	27 ¹ / ₁₆ "	57 ¹ / ₈ "	86 ¹ / ₁₆ "	116 ¹ / ₁₆ "	
G10CE CENTER, END	96"	25 ³ / ₁₆ "	47 ¹ / ₁₆ "	—	—	120"	24 ¹ / ₁₆ "	48 ¹ / ₄ "	—	—	144"	27 ¹ / ₁₆ "	57 ¹ / ₈ "	86 ¹ / ₁₆ "	—	
	168"				192"				216"							
G10C CENTER	168"	—	66 ³ / ₄ "	100 ¹ / ₁₆ "	—	192"	—	76 ¹ / ₁₆ "	115 ¹ / ₁₆ "	—	—	216"	—	85 ⁷ / ₈ "	129 ¹ / ₁₆ "	—
G10E END	168"	32 ¹ / ₂ "	—	—	—	192"	37 ⁷ / ₁₆ "	—	—	—	—	216"	42 ¹ / ₁₆ "	—	—	—
G10LR LEFT, RIGHT	168"	32 ¹ / ₂ "	—	—	135 ¹ / ₁₆ "	192"	37 ⁷ / ₁₆ "	—	—	154 ³ / ₈ "	216"	42 ¹ / ₁₆ "	—	—	173 ¹ / ₂ "	
G10A ALL	168"	32 ¹ / ₂ "	66 ³ / ₄ "	100 ¹ / ₁₆ "	135 ¹ / ₁₆ "	192"	37 ⁷ / ₁₆ "	76 ¹ / ₁₆ "	115 ¹ / ₁₆ "	154 ³ / ₈ "	216"	42 ¹ / ₁₆ "	85 ⁷ / ₈ "	129 ¹ / ₁₆ "	173 ¹ / ₂ "	
G10CE CENTER, END	168"	32 ¹ / ₂ "	66 ³ / ₄ "	100 ¹ / ₁₆ "	—	192"	37 ⁷ / ₁₆ "	76 ¹ / ₁₆ "	115 ¹ / ₁₆ "	—	—	216"	42 ¹ / ₁₆ "	85 ⁷ / ₈ "	129 ¹ / ₁₆ "	—

GROMMET LOCATIONS ON TOPS - TARVER

- G10 grommets are shipped installed
- NACG10EL, NACG10AELPG*, and NACG10BELPG* electrical grommets are available as a substitute for G10 grommet, if desired



- G10 Round Grommet

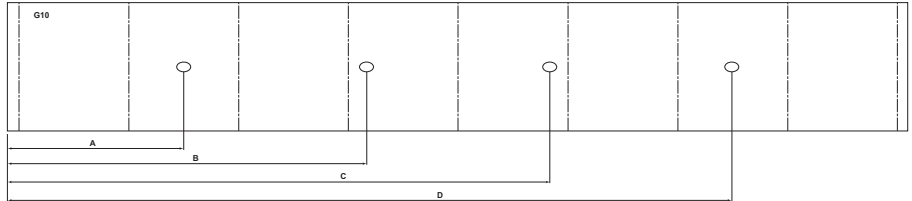
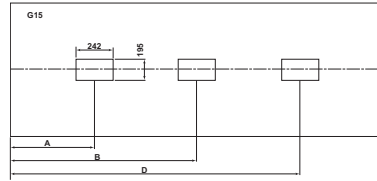


TABLE LENGTH (IN)

GROMMET LOCATION/OPTIONS	240"				
		A	B	C	D
G10C CENTER	240"	—	95 ⁷ / ₁₆ "	144 ¹ / ₁₆ "	—
		A	B	C	D
G10E END	240"	46 ⁷ / ₁₆ "	—	—	—
		A	B	C	D
G10LR LEFT, RIGHT	240"	46 ⁷ / ₁₆ "	—	—	192 ¹ / ₁₆ "
		A	B	C	D
G10A ALL	240"	46 ⁷ / ₁₆ "	95 ⁷ / ₁₆ "	144 ¹ / ₁₆ "	192 ¹ / ₁₆ "
		A	B	C	D
G10CE CENTER, END	240"	46 ⁷ / ₁₆ "	95 ⁷ / ₁₆ "	144 ¹ / ₁₆ "	—
		A	B	C	D

TARVER - GROMMET LOCATIONS ON TOPS

- For 144", 168", 192", 216", and 240" tops, the center grommet location consists of 2 grommet cutouts (upcharge will reflect 2 grommet cutouts)



• CUT-G15 option

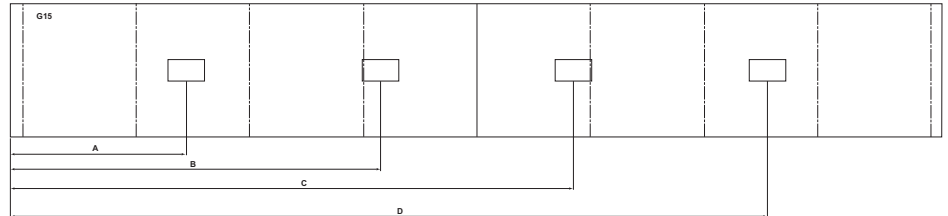
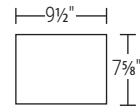


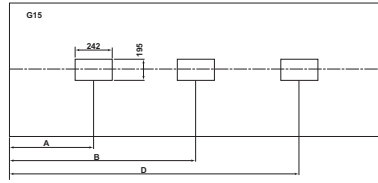
TABLE LENGTH (IN)

GROMMET LOCATION/OPTIONS	96"				120"				144"						
		A	B	C	D		A	B	C	D		A	B	C	D
G15C CENTER	96"	—	47 ¹ / ₁₆ "	—	—	120"	—	59 ¹³ / ₁₆ "	—	—	144"	—	56 ³ / ₁₆ "	87 ¹ / ₄ "	—
G15E END	96"	21 ³ / ₈ "	—	—	—	120"	27 ³ / ₈ "	—	—	—	144"	25 ³ / ₈ "	—	—	—
G15LR LEFT, RIGHT	96"	21 ³ / ₈ "	—	—	74 ³ / ₁₆ "	120"	27 ³ / ₈ "	—	—	92 ¹ / ₄ "	144"	25 ³ / ₈ "	—	—	117 ³ / ₈ "
G15A ALL	96"	21 ³ / ₈ "	47 ¹ / ₁₆ "	—	74 ³ / ₁₆ "	120"	27 ³ / ₈ "	59 ¹³ / ₁₆ "	—	92 ¹ / ₄ "	144"	25 ³ / ₈ "	56 ³ / ₁₆ "	87 ¹ / ₄ "	117 ³ / ₈ "
G15CE CENTER, END	96"	21 ³ / ₈ "	47 ¹ / ₁₆ "	—	—	120"	27 ³ / ₈ "	59 ¹³ / ₁₆ "	—	—	144"	25 ³ / ₈ "	56 ³ / ₁₆ "	87 ¹ / ₄ "	—
		168"					192"					216"			
G15C CENTER	168"	—	66 ³ / ₈ "	101 ³ / ₁₆ "	—	192"	—	75 ³ / ₄ "	115 ⁵ / ₁₆ "	—	216"	—	85 ⁵ / ₁₆ "	130 ³ / ₁₆ "	—
G15E END	168"	30 ¹ / ₁₆ "	—	—	—	192"	35 ¹ / ₂ "	—	—	—	216"	40 ¹ / ₈ "	—	—	—
G15LR LEFT, RIGHT	168"	30 ¹ / ₁₆ "	—	—	137"	192"	35 ¹ / ₂ "	—	—	156 ³ / ₁₆ "	216"	40 ¹ / ₈ "	—	—	175 ⁵ / ₁₆ "
G15A ALL	168"	30 ¹ / ₁₆ "	66 ³ / ₈ "	101 ³ / ₁₆ "	137"	192"	35 ¹ / ₂ "	75 ³ / ₄ "	115 ⁵ / ₁₆ "	156 ³ / ₁₆ "	216"	40 ¹ / ₈ "	85 ⁵ / ₁₆ "	130 ³ / ₁₆ "	175 ⁵ / ₁₆ "
G15CE CENTER, END	168"	30 ¹ / ₁₆ "	66 ³ / ₈ "	101 ³ / ₁₆ "	—	192"	35 ¹ / ₂ "	75 ³ / ₄ "	115 ⁵ / ₁₆ "	—	216"	40 ¹ / ₈ "	85 ⁵ / ₁₆ "	130 ³ / ₁₆ "	—

TARVER

GROMMET LOCATIONS ON TOPS - TARVER

- For 144", 168", 192", 216", and 240" tops, the center grommet location consists of 2 grommet cutouts (upcharge will reflect 2 grommet cutouts)



- CUT-G15 option

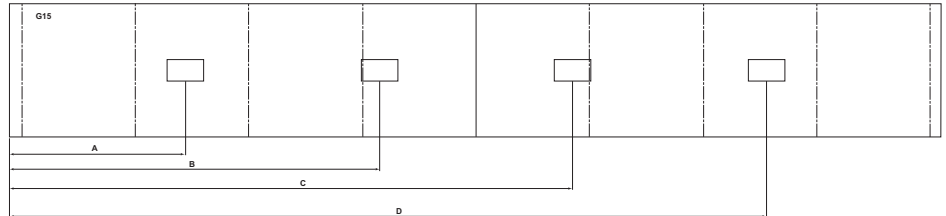
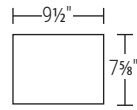
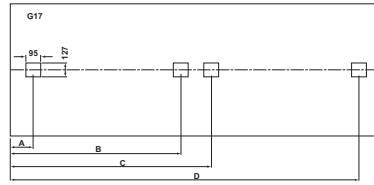


TABLE LENGTH (IN)

GROMMET LOCATION/OPTIONS	240"				
		A	B	C	D
G15C CENTER		A	B	C	D
	240"	—	94"	144 ¹ / ₁₆ "	—
G15E END		A	B	C	D
	240"	45 ¹ / ₁₆ "	—	—	—
G15LR LEFT, RIGHT		A	B	C	D
	240"	45 ¹ / ₁₆ "	—	—	194 ¹ / ₁₆ "
G15A ALL		A	B	C	D
	240"	45 ¹ / ₁₆ "	94"	144 ¹ / ₁₆ "	194 ¹ / ₁₆ "
G15CE CENTER, END		A	B	C	D
	240"	45 ¹ / ₁₆ "	94"	144 ¹ / ₁₆ "	—

TARVER - GROMMET LOCATIONS ON TOPS

- For G17, the center grommet location consists of 2 grommet cutouts (upcharge will reflect 2 grommet cutouts)



• CUT-G17 option

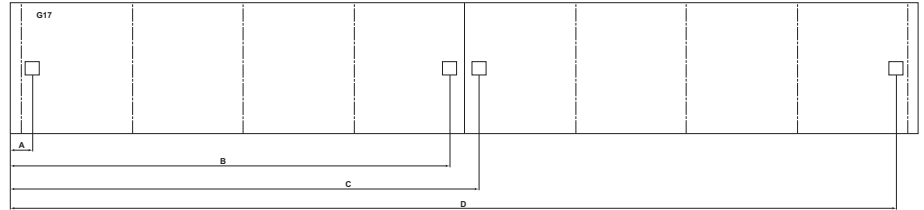
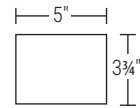
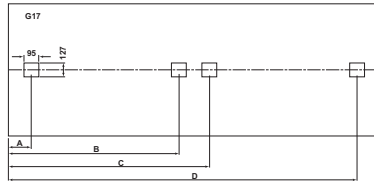


TABLE LENGTH (IN)

GROMMET LOCATION/OPTIONS	96"					120"					144"				
		A	B	C	D		A	B	C	D		A	B	C	D
G17L OR G17R LEFT OR RIGHT	96"	23 ³ / ₈ "	—	—	—	120"	23 ³ / ₈ "	—	—	—	144"	23 ³ / ₈ "	—	—	—
G17LR LEFT & RIGHT	96"	23 ³ / ₈ "	—	—	72 ¹ / ₁₆ "	120"	23 ³ / ₈ "	—	—	96"	144"	23 ³ / ₈ "	—	—	119 ¹⁵ / ₁₆ "
G17C CENTER	96"	—	44"	51 ¹ / ₈ "	—	120"	—	56"	63 ³ / ₈ "	—	144"	—	67 ¹ / ₁₆ "	75 ¹ / ₁₆ "	—
G17LC OR G17RC LEFT & CENTER OR RIGHT & CENTER	96"	23 ³ / ₈ "	44"	51 ¹ / ₈ "	—	120"	23 ³ / ₈ "	56"	63 ³ / ₈ "	—	144"	23 ³ / ₈ "	67 ¹ / ₁₆ "	75 ¹ / ₁₆ "	—
G17A LEFT, RIGHT & CENTER	96"	23 ³ / ₈ "	44"	51 ¹ / ₈ "	72 ¹ / ₁₆ "	120"	23 ³ / ₈ "	56"	63 ³ / ₈ "	96"	144"	23 ³ / ₈ "	67 ¹ / ₁₆ "	75 ¹ / ₁₆ "	119 ¹⁵ / ₁₆ "
	168"					192"					216"				
G17L OR G17R LEFT OR RIGHT	168"	23 ³ / ₈ "	—	—	—	192"	23 ³ / ₈ "	—	—	—	216"	23 ³ / ₈ "	—	—	—
G17LR LEFT & RIGHT	168"	23 ³ / ₈ "	—	—	143 ⁷ / ₁₆ "	192"	23 ³ / ₈ "	—	—	167 ¹³ / ₁₆ "	216"	23 ³ / ₈ "	—	—	191 ³ / ₄ "
G17C CENTER	168"	—	79 ¹ / ₁₆ "	87 ¹³ / ₁₆ "	—	192"	—	91 ¹ / ₈ "	99 ³ / ₄ "	—	216"	—	103 ³ / ₈ "	111 ³ / ₄ "	—
G17LC OR G17RC LEFT & CENTER OR RIGHT & CENTER	168"	23 ³ / ₈ "	79 ¹ / ₁₆ "	87 ¹³ / ₁₆ "	—	192"	23 ³ / ₈ "	91 ¹ / ₈ "	99 ³ / ₄ "	—	216"	23 ³ / ₈ "	103 ³ / ₈ "	111 ³ / ₄ "	—
G17A LEFT, RIGHT & CENTER	168"	23 ³ / ₈ "	79 ¹ / ₁₆ "	87 ¹³ / ₁₆ "	143 ⁷ / ₁₆ "	192"	23 ³ / ₈ "	91 ¹ / ₈ "	99 ³ / ₄ "	167 ¹³ / ₁₆ "	216"	23 ³ / ₈ "	103 ³ / ₈ "	111 ³ / ₄ "	191 ³ / ₄ "

GROMMET LOCATIONS ON TOPS - TARVER

- For G17, the center grommet location consists of 2 grommet cutouts (upcharge will reflect 2 grommet cutouts)



- CUT-G17 option

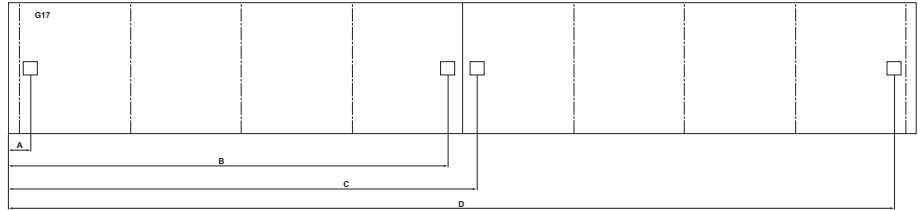
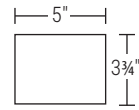
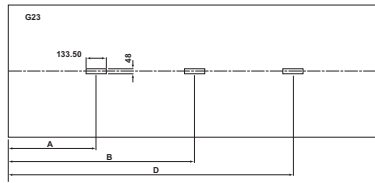


TABLE LENGTH (IN)

GROMMET LOCATION/OPTIONS	240"				
		A	B	C	D
G17L OR G17R LEFT OR RIGHT	240"	23 ⁷ / ₈ "	—	—	—
G17LR LEFT & RIGHT	240"	23 ⁷ / ₈ "	—	—	215 ¹ / ₁₆ "
G17C CENTER	240"	—	115 ³ / ₁₆ "	123 ¹ / ₁₆ "	—
G17LC OR G17RC LEFT & CENTER OR RIGHT & CENTER	240"	23 ⁷ / ₈ "	115 ³ / ₁₆ "	123 ¹ / ₁₆ "	—
G17A LEFT, RIGHT & CENTER	240"	23 ⁷ / ₈ "	115 ³ / ₁₆ "	123 ¹ / ₁₆ "	215 ¹ / ₁₆ "

TARVER - GROMMET LOCATIONS ON TOPS

- For 144", 168", 192", 216", and 240" tops, the center grommet location consists of 2 grommet cutouts (upcharge will reflect 2 grommet cutouts)



• CUT-G23 option

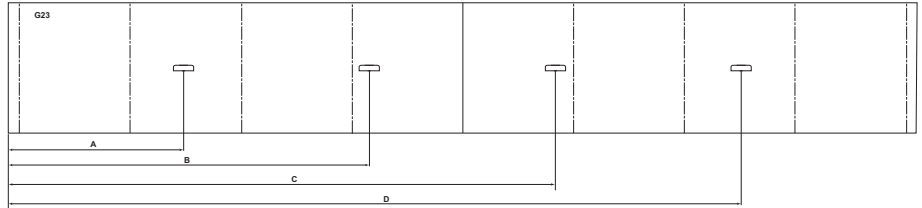
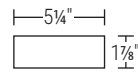
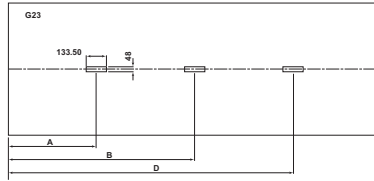


TABLE LENGTH (IN)

GROMMET LOCATION/OPTIONS	96"				120"				144"						
		A	B	C	D		A	B	C	D		A	B	C	D
G23C CENTER	96"	—	47 ¹ / ₁₆ "	—	—	120"	—	59 ¹³ / ₁₆ "	—	—	144"	—	57"	86 ¹³ / ₁₆ "	—
G23E END	96"	22 ¹¹ / ₁₆ "	—	—	—	120"	28 ³ / ₈ "	—	—	—	144"	27 ³ / ₁₆ "	—	—	—
G23LR LEFT, RIGHT	96"	22 ¹¹ / ₁₆ "	—	—	73 ³ / ₄ "	120"	28 ³ / ₈ "	—	—	91 ¹ / ₁₆ "	144"	27 ³ / ₁₆ "	—	—	116 ³ / ₈ "
G23A ALL	96"	22 ¹¹ / ₁₆ "	47 ¹ / ₁₆ "	—	73 ³ / ₄ "	120"	28 ³ / ₈ "	59 ¹³ / ₁₆ "	—	91 ¹ / ₁₆ "	144"	27 ³ / ₁₆ "	57"	86 ¹³ / ₁₆ "	116 ³ / ₈ "
G23CE CENTER, END	96"	22 ¹¹ / ₁₆ "	47 ¹ / ₁₆ "	—	—	120"	28 ³ / ₈ "	59 ¹³ / ₁₆ "	—	—	144"	27 ³ / ₁₆ "	57"	86 ¹³ / ₁₆ "	—
	168"				192"				216"						
G23C CENTER	168"	—	66 ⁶ / ₁₆ "	101 ¹ / ₈ "	—	192"	—	76 ¹ / ₈ "	115 ¹ / ₂ "	—	216"	—	85 ¹ / ₁₆ "	129 ³ / ₈ "	—
G23E END	168"	31 ⁵ / ₁₆ "	—	—	—	192"	36 ³ / ₄ "	—	—	—	216"	41 ¹ / ₁₆ "	—	—	—
G23LR LEFT, RIGHT	168"	31 ⁵ / ₁₆ "	—	—	135 ³ / ₄ "	192"	36 ³ / ₄ "	—	—	154 ⁷ / ₈ "	216"	41 ¹ / ₁₆ "	—	—	174 ¹ / ₁₆ "
G23A ALL	168"	31 ⁵ / ₁₆ "	66 ⁶ / ₁₆ "	101 ¹ / ₈ "	135 ³ / ₄ "	192"	36 ³ / ₄ "	76 ¹ / ₈ "	115 ¹ / ₂ "	154 ⁷ / ₈ "	216"	41 ¹ / ₁₆ "	85 ¹ / ₁₆ "	129 ³ / ₈ "	174 ¹ / ₁₆ "
G23CE CENTER, END	168"	31 ⁵ / ₁₆ "	66 ⁶ / ₁₆ "	101 ¹ / ₈ "	—	192"	36 ³ / ₄ "	76 ¹ / ₈ "	115 ¹ / ₂ "	—	216"	41 ¹ / ₁₆ "	85 ¹ / ₁₆ "	129 ³ / ₈ "	—

GROMMET LOCATIONS ON TOPS - TARVER

- For 144", 168", 192", 216", and 240" tops, the center grommet location consists of 2 grommet cutouts (upcharge will reflect 2 grommet cutouts)



- CUT-G23 option

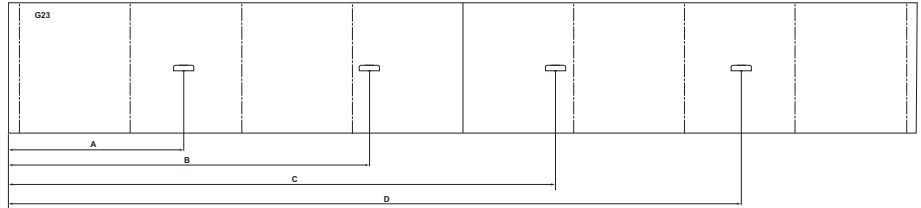
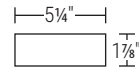


TABLE LENGTH (IN)

GROMMET LOCATION/OPTIONS	240"				
		A	B	C	D
G23C CENTER					
	240"	—	95 ⁵ / ₁₆ "	144 ¹ / ₄ "	—
G23E END					
	240"	46 ⁵ / ₁₆ "	—	—	—
G23LR LEFT, RIGHT					
	240"	46 ⁵ / ₁₆ "	—	—	193 ³ / ₁₆ "
G23A ALL					
	240"	46 ⁵ / ₁₆ "	95 ⁵ / ₁₆ "	144 ¹ / ₄ "	193 ³ / ₁₆ "
G23CE CENTER, END					
	240"	46 ⁵ / ₁₆ "	95 ⁵ / ₁₆ "	144 ¹ / ₄ "	—

PRODUCT SPECIFICATIONS

- Shipped KD
- Legs made of metal and solid wood
- Reference pages 327-334 for grommet and cutout locations
- Grommet cutout is only available in Center location.

TO ORDER, SPECIFY:

1. Model Number
2. Grommet
3. Top Finish/Laminate
4. Base Finish
5. Paint

SAMPLE MODEL NUMBER:

90N4229TRDTW CUT-G17C EW 462 462
 • See page 325 for all options available in Tarver

**ROUND TOP
TRESTLE BASE
WORKSURFACE HEIGHT**



MODEL NO./DESCRIPTION	LIST PRICE	DIMENSIONS					CARTONED WEIGHT	CUBIC FEET
		D	W	H	A	KW		
42" ROUND 1 1/8" TOP THICKNESS		DI						
90N4229TRDTW Wood	\$ 5232	42 1/16	—	29 1/16	—	—	86 lbs.	20.1
90N4229TRDTL Laminate	4952	42 1/16	—	29 1/16	—	—	86 lbs.	20.7
48" ROUND								
90N4829TRDTW Wood	\$ 5655	48 1/16	—	29 1/16	—	—	103 lbs.	21.1
90N4829TRDTL Laminate	5077	48 1/16	—	29 1/16	—	—	103 lbs.	21.4
54" ROUND								
90N5429TRDTW Wood	\$ 6077	54	—	29 1/16	—	—	153 lbs.	37.9
90N5429TRDTL Laminate	5655	54	—	29 1/16	—	—	153 lbs.	37.9
60" ROUND								
90N6029TRDTW Wood	\$ 6498	58 1/16	—	29 1/16	—	—	213 lbs.	39.3
90N6029TRDTL Laminate	6077	58 1/16	—	29 1/16	—	—	213 lbs.	39.3

• G10 grommet option not available

**ROUND TOP
TRESTLE BASE
COUNTER HEIGHT**



42" ROUND 1 1/8" TOP THICKNESS		DI						
90N4235TRDTW Wood	\$ 6017	42 1/16	—	35 1/16	—	—	92 lbs.	25.2
90N4235TRDTL Laminate	5694	42 1/16	—	35 1/16	—	—	92 lbs.	25.8
48" ROUND								
90N4835TRDTW Wood	\$ 6502	48 1/16	—	35 1/16	—	—	109 lbs.	26.2
90N4835TRDTL Laminate	5840	48 1/16	—	35 1/16	—	—	109 lbs.	26.5

• G10 grommet option not available

**ROUND TOP
TRESTLE BASE
BAR HEIGHT**



42" ROUND 1 1/8" TOP THICKNESS		DI						
90N4241TRDTW Wood	\$ 6619	42 1/16	—	41 3/8	—	—	159 lbs.	29.7
90N4241TRDTL Laminate	6263	42 1/16	—	41 3/8	—	—	159 lbs.	30.3
48" ROUND								
90N4841TRDTW Wood	\$ 7151	48 1/16	—	41 3/8	—	—	219 lbs.	30.7
90N4841TRDTL Laminate	6424	48 1/16	—	41 3/8	—	—	219 lbs.	31.0

• G10 grommet option not available

TARVER

PRODUCT SPECIFICATIONS

- Shipped KD
- Legs made of metal and solid wood
- Reference pages 327-334 for grommet and cutout locations
- Grommet cutout is only available in Center location.

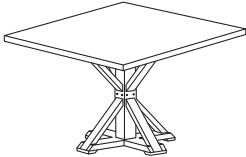
TO ORDER, SPECIFY:

1. Model Number
2. Grommet
3. Top Finish/Laminate
4. Base Finish
5. Paint

SAMPLE MODEL NUMBER:

- 90N606029TSQTL X G1012 423 423
- See page 325 for all options available in Tarver

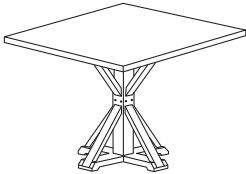
SQUARE TOP TRESTLE BASE WORKSURFACE HEIGHT



MODEL NO./DESCRIPTION	LIST PRICE	DIMENSIONS					CARTONED WEIGHT	CUBIC FEET
		D	W	H	A	KW		
42" SQUARE 1 1/8" TOP THICKNESS								
90N424229TSQTW	\$ 5232	42 1/16	42 1/16	29 1/16	—	—	112 lbs.	20.7
90N424229TSQTL	4952	42 1/16	42 1/16	29 1/16	—	—	112 lbs.	20.7
48" SQUARE								
90N484829TSQTW	\$ 5655	48 1/16	48 1/16	29 1/16	—	—	129 lbs.	21.4
90N484829TSQTL	5077	48 1/16	48 1/16	29 1/16	—	—	129 lbs.	21.4
54" SQUARE								
90N545429TSQTW	\$ 6077	54	54	29 1/16	—	—	174 lbs.	37.9
90N545429TSQTL	5655	54	54	29 1/16	—	—	174 lbs.	37.9
60" SQUARE								
90N606029TSQTW	\$ 6498	58 7/16	58 7/16	29 1/16	—	—	203 lbs.	39.3
90N606029TSQTL	6077	58 7/16	58 7/16	29 1/16	—	—	203 lbs.	39.3

- G10 grommet option not available

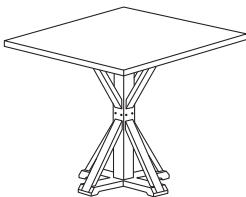
SQUARE TOP TRESTLE BASE COUNTER HEIGHT



42" SQUARE 1 1/8" TOP THICKNESS								
90N424235TSQTW	\$ 6017	42 1/16	42 1/16	35 1/16	—	—	118 lbs.	25.8
90N424235TSQTL	5694	42 1/16	42 1/16	35 1/16	—	—	118 lbs.	25.8
48" SQUARE								
90N484835TSQTW	\$ 6502	48 1/16	48 1/16	35 1/16	—	—	135 lbs.	26.5
90N484835TSQTL	5840	48 1/16	48 1/16	35 1/16	—	—	135 lbs.	26.5

- G10 grommet option not available

SQUARE TOP TRESTLE BASE BAR HEIGHT



42" SQUARE 1 1/8" TOP THICKNESS								
90N424241TSQTW	\$ 6619	42 1/16	42 1/16	41 3/8	—	—	180 lbs.	30.3
90N424241TSQTL	6263	42 1/16	42 1/16	41 3/8	—	—	180 lbs.	30.3
48" SQUARE								
90N484841TSQTW	\$ 7151	48 1/16	48 1/16	41 3/8	—	—	209 lbs.	31.0
90N484841TSQTL	6424	48 1/16	48 1/16	41 3/8	—	—	209 lbs.	31.0

- G10 grommet option not available

PRODUCT SPECIFICATIONS

- Shipped KD
- Legs made of metal and solid wood
- Reference pages 327-334 for grommet and cutout locations

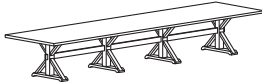
TO ORDER, SPECIFY:

1. Model Number
2. Grommet
3. Top Finish/Laminate
4. Base Finish
5. Paint

SAMPLE MODEL NUMBER:

90N4814429TRTTL CUT-G17A DW DW EM
 • See page 325 for all options available in Tarver

**RECTANGLE TOP
 TRESTLE BASE
 WORKSURFACE HEIGHT**



MODEL NO./DESCRIPTION	LIST PRICE	DIMENSIONS					CARTONED WEIGHT	CUBIC FEET
		D	W	H	A	KW		
48" x 96" 1 1/8" TOP THICKNESS								
90N489629TRTTW	Wood	\$ 9797	48 1/16	95 7/8	29 1/16	—	—	302 lbs. 17.4
90N489629TRTTL	Laminate	8987	48 1/16	95 7/8	29 1/16	—	—	302 lbs. 17.4
48" x 120"								
90N4812029TRTTW	Wood	\$ 13653	48 1/16	119 13/16	29 1/16	—	—	382 lbs. 23.7
90N4812029TRTTL	Laminate	13048	48 1/16	119 13/16	29 1/16	—	—	382 lbs. 23.7
48" x 144"								
90N4814429TRTTW	Wood	\$ 15398	48 1/16	143 3/4	29 1/16	—	—	440 lbs. 25.9
90N4814429TRTTL	Laminate	14672	48 1/16	143 3/4	29 1/16	—	—	440 lbs. 26.0
48" x 168"								
90N4816829TRTTW	Wood	\$ 18679	48 1/16	167 11/16	29 1/16	—	—	527 lbs. 31.9
90N4816829TRTTL	Laminate	17997	48 1/16	167 11/16	29 1/16	—	—	527 lbs. 31.9
48" x 192"								
90N4819229TRTTW	Wood	\$ 20080	48 1/16	191 3/8	29 1/16	—	—	582 lbs. 34.1
90N4819229TRTTL	Laminate	19421	48 1/16	191 3/8	29 1/16	—	—	582 lbs. 34.1
48" x 216"								
90N4821629TRTTW	Wood	\$ 21492	48 1/16	215 5/16	29 1/16	—	—	670 lbs. 22.5
90N4821629TRTTL	Laminate	20859	48 1/16	215 5/16	29 1/16	—	—	670 lbs. 22.5
48" x 240"								
90N4824029TRTTW	Wood	\$ 22898	48 1/16	239 1/2	29 1/16	—	—	719 lbs. 23.1
90N4824029TRTTL	Laminate	22298	48 1/16	239 1/2	29 1/16	—	—	719 lbs. 23.1

- 96" wide tops use 2 bases
- 120" and 144" wide tops use 3 bases
- 168", 192", 216", and 240" wide tops use 4 bases
- 120", 144", 168", and 192" wide tops are 2 piece tops
- 216" and 240" wide tops are 3 piece tops
- Almond, Portobello, Sable, and Sonoma veneer grain pattern will not match on multi-piece conference tops

TARVER

PRODUCT SPECIFICATIONS

- Shipped KD
- Legs made of metal and solid wood
- Reference pages 327-334 for grommet and cutout locations

TO ORDER, SPECIFY:

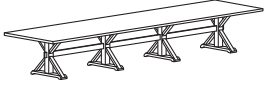
1. Model Number
2. Grommet
3. Top Finish/Laminate
4. Base Finish
5. Paint

SAMPLE MODEL NUMBER:

90N6019229TRTTW CUT-17LR ERO 461 461

- See page 325 for all options available in Tarver

RECTANGLE TOP TRESTLE BASE WORKSURFACE HEIGHT (CONTINUED)



MODEL NO./DESCRIPTION	LIST PRICE	DIMENSIONS					CARTONED CUBIC	
		D	W	H	A	KW	WEIGHT	FEET
60" x 144" 1 1/2" TOP THICKNESS								
90N6014429TRTTW Wood	\$ 19686	58 1/16	143 3/4	29 7/16	—	—	535 lbs.	26.7
90N6014429TRTTL Laminate	18635	58 1/16	143 3/4	29 7/16	—	—	535 lbs.	35.7
60" x 168"								
90N6016829TRTTW Wood	\$ 23941	58 1/16	167 11/16	29 7/16	—	—	605 lbs.	34.5
90N6016829TRTTL Laminate	22904	58 1/16	167 11/16	29 7/16	—	—	605 lbs.	45.7
60" x 192"								
90N6019229TRTTW Wood	\$ 25673	58 1/16	191 1/8	29 7/16	—	—	702 lbs.	38.0
90N6019229TRTTL Laminate	24651	58 1/16	191 1/8	29 7/16	—	—	702 lbs.	52.5
60" x 216"								
90N6021629TRTTW Wood	\$ 27411	58 1/16	215 1/16	29 7/16	—	—	813 lbs.	34.0
90N6021629TRTTL Laminate	26411	58 1/16	215 1/16	29 7/16	—	—	813 lbs.	54.7
60" x 240"								
90N6024029TRTTW Wood	\$ 29149	58 1/16	239 1/2	29 7/16	—	—	874 lbs.	35.2
90N6024029TRTTL Laminate	28169	58 1/16	239 1/2	29 7/16	—	—	874 lbs.	57.9

- 144" wide tops use 3 bases
- 168", 192", 216", and 240" wide tops use 4 bases
- 144" wide tops are 2 piece tops
- 168", 192", 216", and 240" wide tops are 3 piece tops
- Almond, Portobello, Sable, and Sonoma veneer grain pattern will not match on multi-piece conference tops

PRODUCT SPECIFICATIONS

- Shipped KD
- Legs made of metal and solid wood
- Reference pages 327-334 for grommet and cutout locations

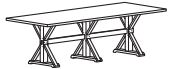
TO ORDER, SPECIFY:

1. Model Number
2. Grommet
3. Top Finish/Laminate
4. Base Finish
5. Paint

SAMPLE MODEL NUMBER:

90N489641TRTTW X PTRO PTRO 463
 • See page 325 for all options available in Tarver

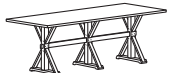
**RECTANGLE TOP
TRESTLE BASE
COUNTER HEIGHT**



MODEL NO./DESCRIPTION	LIST PRICE	DIMENSIONS					CARTONED WEIGHT	CUBIC FEET
		D	W	H	A	KW		
48" x 96" 1 1/8" TOP THICKNESS								
90N489635TRTTW Wood	\$ 10286	48 1/16	95 7/8	35 1/16	—	—	317 lbs.	19.2
90N489635TRTTL Laminate	9436	48 1/16	95 7/8	35 1/16	—	—	317 lbs.	19.2
48" x 120"								
90N4812035TRTTW Wood	\$ 14336	48 1/16	119 1/16	35 1/16	—	—	397 lbs.	26.4
90N4812035TRTTL Laminate	13702	48 1/16	119 1/16	35 1/16	—	—	397 lbs.	26.6

• 96" wide tops use 2 bases
 • 120" wide tops use 3 bases
 • 96" wide tops are 1 piece tops
 • 120" wide tops are 2 piece tops
 • Almond, Portobello, Sable, and Sonoma veneer grain pattern will not match on multi-piece conference tops

**RECTANGLE TOP
TRESTLE BASE
BAR HEIGHT**



MODEL NO./DESCRIPTION	LIST PRICE	DIMENSIONS					CARTONED WEIGHT	CUBIC FEET
		D	W	H	A	KW		
48" x 96" 1 1/8" TOP THICKNESS								
90N489641TRTTW Wood	\$ 16169	48 1/16	95 7/8	41 3/8	—	—	319 lbs.	20.8
90N489641TRTTL Laminate	15406	48 1/16	95 7/8	41 3/8	—	—	319 lbs.	23.0
48" x 120"								
90N4812041TRTTW Wood	\$ 19613	48 1/16	119 1/16	41 3/8	—	—	409 lbs.	28.8
90N4812041TRTTL Laminate	18898	48 1/16	119 1/16	41 3/8	—	—	409 lbs.	29.0

• 96" wide tops use 2 bases
 • 120" wide tops use 3 bases
 • 96" wide tops are 1 piece tops
 • 120" wide tops are 2 piece tops
 • Almond, Portobello, Sable, and Sonoma veneer grain pattern will not match on multi-piece conference tops

TARVER

PRODUCT SPECIFICATIONS

- Legs made of metal and solid wood
- End and Magazine Tables ship assembled

TO ORDER, SPECIFY:

1. Model Number
2. Top Finish/Laminate
3. Base Finish
4. Paint

SAMPLE MODEL NUMBER:

90N2421ENL 478 461 462
 90N2448MGW PBRO 405 462

- See page 325 for all options available in Tarver

	MODEL NO./DESCRIPTION	LIST PRICE	DIMENSIONS					CARTONED WEIGHT	CUBIC FEET
			D	W	H	A	KW		
END TABLE TRESTLE BASE	90N2421ENW Wood	\$ 2524	24	24	22 $\frac{3}{4}$	—	—	60 lbs.	12.8
	90N2421ENL Laminate	2390	24	24	22 $\frac{3}{4}$	—	—	60 lbs.	12.8



- No grommet cutouts available
- 1 $\frac{1}{2}$ " thick tops

MAGAZINE TABLE TRESTLE BASE



90N2448MGW Wood	\$ 3228	24	48 $\frac{1}{16}$	16 $\frac{3}{4}$	—	—	83 lbs.	18.8
90N2448MGL Laminate	3093	24	48 $\frac{1}{16}$	16 $\frac{3}{4}$	—	—	83 lbs.	18.8

- No grommet cutouts available
- 1 $\frac{1}{2}$ " thick tops

PRODUCT SPECIFICATIONS

- Shipped KD
- Legs made of solid wood

TO ORDER, SPECIFY:

1. Model Number
2. Paint
3. Finish
4. Base Finish

SAMPLE MODEL NUMBER:

90N3072MBMW 461 AD ADRO
 • See page 325 for all options available in Tarver

MODEL NO./DESCRIPTION	LIST PRICE	DIMENSIONS					CARTONED WEIGHT	CUBIC FEET
		D	W	H	A	KW		
MOBILE MARKER BOARD 90N3072MBMW	\$ 4571	28	29 ¹ / ₆	72	—	—	97 lbs.	23.0



- Dry erase writing surface is approximately 26" wide x 36½" high
- Marker board is approx 35" above fixed floor
- Tray provides lip to keep markers in place
- 4 braking casters
- To specify select paint for top metal divider, finish for horizontal surface, and finish for solid wood base

TARVER

PRODUCT SPECIFICATIONS

- Shipped assembled

TO ORDER, SPECIFY:

1. Model Number
2. Finish/Laminate
3. Hardware Paint
4. Paint

SAMPLE MODEL NUMBER:

90N2436MUCL SK MB 423

- See page 325 for all options available in Tarver

MODEL NO./DESCRIPTION	LIST PRICE	DIMENSIONS					CARTONED WEIGHT	CUBIC FEET
		D	W	H	A	KW		
90N2436MUCW Wood	\$ 4922	23 ³ / ₁₆	41 ³ / ₁₆	35 ⁷ / ₁₆	—	—	160 lbs.	26.8
90N2436MUCL Laminate	3867	23 ³ / ₁₆	41 ³ / ₁₆	35 ⁷ / ₁₆	—	—	160 lbs.	26.8

MOBILE UTILITY CART



- Top width is 36"
- 4 braking casters
- One adjustable shelf behind hinged doors
- Doors are non-locking
- These TFL colors are restricted on this model: BZ Brazilwood, CI Chai, KN Kona, PC Porcini, WL Willow, 457 Dapple

PRODUCT SPECIFICATIONS

- Shipped assembled

TO ORDER, SPECIFY:

1. Model Number
2. Finish/Laminate
3. Hardware Paint

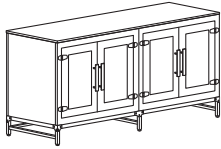
SAMPLE MODEL NUMBER:

90N246035CCSL G1006 MB

- See page 325 for all options available in Tarver

	MODEL NO./DESCRIPTION	LIST PRICE	DIMENSIONS					CARTONED WEIGHT	CUBIC FEET
			D	W	H	A	KW		

BUFFET CREDENZA



48" 1 1/16" TOP THICKNESS

90N244835CCSW	Wood	\$ 9432	24	48 1/16	35	—	—	184 lbs.	33.0
90N244835CCSL	Laminate	7627	24	48 1/16	35	—	—	184 lbs.	33.0

- Metal base height is 6 1/16"
- Grommet option not available
- Features an adjustable shelf behind each set of doors
- Features a fully finished back
- Doors are non-locking
- Inside dimension of storage section is 21 1/16"D x 19 7/8"W x 23 3/16"H
- These TFL colors are restricted on this model: BZ Brazilwood, CI Chai, KN Kona, PC Porcini, WL Willow, 457 Dapple

60" 1 1/16" TOP THICKNESS

90N246035CCSW	Wood	\$ 9643	24	60	35	—	—	250 lbs.	40.3
90N246035CCSL	Laminate	7839	24	60	35	—	—	250 lbs.	40.3

- Metal base height is 6 1/16"
- Grommet option not available
- Features an adjustable shelf behind each set of doors
- Features a fully finished back
- Doors are non-locking
- Inside dimension of storage section is 21 1/16"D x 25 1/8"W x 23 3/16"H
- These TFL colors are restricted on this model: BZ Brazilwood, CI Chai, KN Kona, PC Porcini, WL Willow, 457 Dapple

72" 1 1/16" TOP THICKNESS

90N247235CCSW	Wood	\$ 9854	24	71 1/16	35	—	—	286 lbs.	47.7
90N247235CCSL	Laminate	8051	24	71 1/16	35	—	—	286 lbs.	47.7

- Metal base height is 6 1/16"
- Grommet option not available
- Features an adjustable shelf behind each set of doors
- Features a fully finished back
- Doors are non-locking
- Inside dimension of storage section is 21 1/16"D x 31 7/8"W x 23 3/16"H
- These TFL colors are restricted on this model: BZ Brazilwood, CI Chai, KN Kona, PC Porcini, WL Willow, 457 Dapple

