



Blue Mountains

in collaboration with Destination NSW for the Blue Mountains

Photo: Hamilton Lund/Destination NSW for the Blue Mountains



Hugh Hartshorne/Destination NSW for the Blue Mountains

The Blue Mountains get their name from the natural blue haze created by vast eucalypt forests in this World Heritage area. Tiny droplets of oil released from the trees mix with water vapour and sunlight to produce the distinctive colour. Enjoy crisp mountain air, beautiful panoramas, charming villages, one of the world's oldest cave systems, and exhilarating adventures in the Blue Mountains, near Sydney. You can even see dinosaur trees in the Blue Mountains Botanic Garden, Mount Tomah. This is a great Australian escape and a natural wonder of the world.



Jeffrey Drewitz/Destination NSW for the Blue Mountains



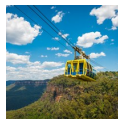
David Hill/Destination NSW for the Blue Mountains

Featured



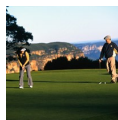
Mayfield Garden

Lovers of beautiful gardens will be delighted with Mayfield Garden, one of t...



Scenic World

At Scenic World you choose how you take in the spectacular sites of the Thre...



Golf

The picturesque fairways of the Blue Mountains draw in many avid golfers fro...



Everglades House & Gardens

A treasure from the 1930s, the elegant and tranquil gardens are acclaimed by...



Blackheath Rhododendron Fe...

During the Annual Rhododendron Festival, the Blackheath Village comes alive

Top 5



Bygone Beautys Treasured T...

Bygone Beautys is home to one of the world's largest private collections of ...



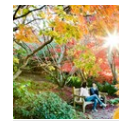
Aboriginal Blue Mountains ...

Travel back in time and learn about 'The Dreaming' — the mythical period whe...



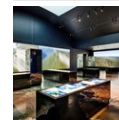
Abseiling & Canyoning with...

The Blue Mountains Adventure Company is an abseiling, rock-climbing, canyoni...



Blue Mountains Botanic Gar...

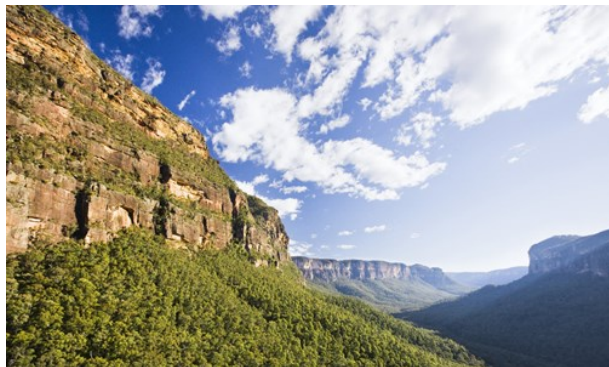
With a world-class collection of plants, this splendid botanic garden is som...



Blue Mountains Cultural Centre

Built on the highest point in Katoomba, the Blue Mountains Cultural Centre o...

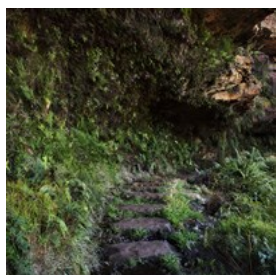
THE TOWNS OF BLUE MOUNTAINS



Hamilton Lund/Destination NSW for the Blue Mountains

The majestic Blue Mountains have lured travellers for decades. Named a World Heritage site in 2000, the Greater Blue Mountains World Heritage Area contains eight national parks and protected areas, four internationally significant wetlands and a rich cultural tradition of some six Aboriginal groups dating back many thousands of years. More than 1,500 species of plants and a third of Australia's bird species live in an area ten times older than the Grand Canyon. With luxury retreats, charming villages and towns, and a flourishing artistic community, it's easy to see why the Blue Mountains are a sanctuary for explorers, adventurers and those seeking tranquillity.

Blackheath



This small town is great for enjoying crisp mountain air, brisk walks, good food and cosy accommodation. The village is on an escarpment that has spectacular mountain scenery on both sides. Govetts Leap Lookout, Evans Lookout and Hargraves Lookout are high-elevation viewing platforms from where you can observe the natural wonder of this World Heritage area.

Photo: Maggie Yap/unsplash

Internet: www.visitnsw.com/destinations/blue-mountains/katoomba-area/blackheath

Katoomba



The spectacular scenery of the Blue Mountains surrounds this historic town. Scenic and secluded, Katoomba offers you an opportunity to relax, unwind and recharge, and it's a great base from which to explore the rest of the World Heritage region. You can admire deep valleys, sandstone plateaus, waterfalls and native animals from the many walking trails and lookouts near Katoomba.

Photo: Martin David/unsplash

Internet: www.visitnsw.com/destinations/blue-mountains/katoomba-area/katoomba

Leura



Known as the 'garden village', this picturesque town has many fine gardens and grand old homes. Don't miss the celebrated National Trust-listed Everglades Gardens, a 1930s treasure featuring European-style gardens. The beautiful natural attractions around Leura are best seen from lookouts at the end of any number of cliff top walking trails. And the village delights shoppers with all manner of boutiques and gourmet food at the many cafés and restaurants.

Photo: James Horan/Destination NSW for the Blue Mountains

Internet: www.visitnsw.com/destinations/blue-mountains/katoomba-area/leura

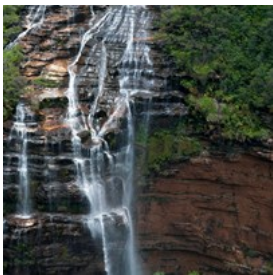
Mount Victoria



Situated near the top of the Blue Mountains, this town is home to the region's highest peak, One Tree Hill. This charming heritage-listed village is a fascinating step back in time with its many historic buildings. An abundance of lookouts within easy driving distance from here makes Mount Victoria a good base for visitors.

Photo: Hamilton Lund/Destination NSW for the Blue Mountains
Internet: www.visitnsw.com/destinations/blue-mountains/katoomba-area/mount-victoria

Wentworth Falls



Surrounded by the World Heritage wilderness, this area features a number of excellent bush walks and lookouts. It offers spectacular views over the Jamison Valley and the magnificent waterfall for which it's named. The town also has a good collection of Victorian and other historic buildings.

Photo: Hamish/unsplash
Internet: www.visitnsw.com/destinations/blue-mountains/katoomba-area/wentworth-falls

DO & SEE



James Horan/Destination NSW for the Blue Mountains

The World Heritage-listed Blue Mountains offer many exhilarating adventures and experiences, from walking trails and abseiling to golf and gardens. Deeply connected to Aboriginal culture, the Blue Mountains also offer wonderful insights into The Dreaming and indigenous heritage. Enjoy tours with Aboriginal guides on walking trails through the spectacular wilderness and see traditional dance and music.

Bygone Beautys Treasured Teapot Museum & Tearooms



Bygone Beautys is home to one of the world's largest private collections of teapots, spanning five centuries. More than 5,500 teapots are in the collection: Royal Doulton, Torquay Ware, Wedgwood, Bunnykins and Toby characters to name a few. From the elegant to the ostentatious, this is a unique antique emporium which also features a tearoom where you can indulge in a Devonshire tea or traditional high tea.

Photo: Bygone Beautys/Destination NSW for the Blue Mountains
Address: 20 Grose Street, Leura NSW
Opening hours: Daily 10am-5:30pm
Phone: +61 2 4784 3117

Internet: www.bygonebeautys.com.au

Aboriginal Blue Mountains Walkabout



Travel back in time and learn about 'The Dreaming' — the mythical period when the earth, Aboriginal people, animals, and landscapes

were created. This multi award-winning Aboriginal walkabout adventure will enrich you with its ancient wisdom. Aboriginal owned and guided, you will follow an original walkabout song line of sacred sites through a beautiful and secluded rainforest gully. Walk gently and listen carefully to what the natural bush, fascinating art and ceremonial sites have to tell.

Photo: Aboriginal Blue Mountains Walkabout/Destination NSW for the Blue Mountains

Address: Faulconbridge Railway Station, Faulconbridge NSW
Phone: +61 408 443 822

Internet: www.visitnsw.com/things-to-do/tours/aboriginal-blue-mountains-walkabout#aboriginal-blue-mountains-walkabout-tour

Abseiling & Canyoning with Blue Mountains Adventure Company



The Blue Mountains Adventure Company is an abseiling, rock-climbing, canyoning and bushwalking specialist.

Take on an action-packed adventure, combining an abseiling course and canyon trip: wading, swimming and a thrilling abseil await you. Operating for more than 30 years, the company offers courses for all levels of experience, from novice to advance thrill-seekers.

Photo: Blue Mountains Adventure Company/Destination NSW for the Blue Mountains

Address: 26 Parke Street, Katoomba NSW

Phone: +61 2 4782 1271

Internet: bmac.com.au

Blue Mountains Botanic Garden Mount Tomah



With a world-class collection of plants, this splendid botanic garden is some 1,000 metres above sea level and enjoys spectacular views.

See the famous Wollemi pine, nicknamed the dinosaur tree. The tree was discovered in 1994, deep in a gorge in the Wollemi National Park, part of the Greater Blue Mountains World Heritage Area. Guided tours are available, including an Aboriginal heritage tour

Photo: Greg Bourke BGCP/Destination NSW for the Blue Mountains

Address: Bells Line of Road, Mount Tomah NSW

Opening hours: Garden: daily 9am-5pm. Visitor Centre: daily 9:30am-5pm

Phone: +61 2 4567 3000

Internet: www.botanicgardens.org.au/blue-mountains-botanic-garden-mount-tomah

More Info: Originally known as the Mount Tomah Botanical Garden.

Blue Mountains Cultural Centre



Built on the highest point in Katoomba, the Blue Mountains Cultural Centre offers panoramic views of the Greater Blue Mountains World

Heritage Area. The centre showcases innovative and diverse cultural programs for the enjoyment of visitors to the Blue Mountains, featuring the Blue Mountains City Art Gallery, the World Heritage Interpretive Exhibition, a library and a cafe.

Photo: Euroline/Blue Mountains Cultural Centre/Destination

NSW for the Blue Mountains

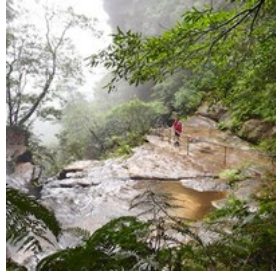
Address: Katoomba Village, 30 Parke Street, Katoomba NSW

Opening hours: Mon-Fri 10am-5pm, Sat & Sun 10am-4pm

Phone: +61 2 4780 5410

Internet: bluemountainsculturalcentre.com.au

Blue Mountains National Pass



This 4.5-kilometre loop walk offers gorgeous views of the Jamison Valley and surrounding cliffs. Magnificent waterfalls inspire you at the beginning of your walk and reward you again at the end. The track crosses the midpoint of Wentworth Falls and follows a ledge halfway down the 185-metre high cliffs, leading you to the aptly named Giant Staircase with its 1,000 steps, which requires reasonable fitness levels.

Photo: NPWS/Destination NSW for the Blue Mountains

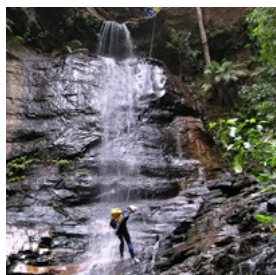
Address: Blue Mountains National Park, entrance via

Conversation Hut, Wentworth Falls NSW

Opening hours: Accessible at all times

Internet: www.nationalparks.nsw.gov.au/things-to-do/walking-tracks/national-pass

Bush Survival Course with High & Wild Adventures



Learn how to navigate by the sun, moon and stars, make your own compass and sundial, preserve meat and prepare plant foods and medicine. An overnight two-day camping course with High and Wild Australian Adventures is for people who want to survive when exploring wilderness regions. By the end of the course you will know several ways to light a fire without matches, how to find water and purify it by natural means, and build survival shelters to keep you warm, dry and safe.

Photo: High n Wild Australian Adventures/Destination NSW for the Blue Mountains

Address: 207 Katoomba Street (inside the YHA), Katoomba NSW

Phone: +61 2 4782 6224

Internet: www.highandwild.com.au

Everglades House & Gardens



A treasure from the 1930s, the elegant and tranquil gardens are acclaimed by garden lovers worldwide and draw inspiration from the great traditions of European landscape design. You'll also enjoy breathtaking views of the Blue Mountains. The Art Déco Everglades House features a gallery, gift shop and tea rooms. The tea rooms in the house and courtyard are open seven days a week.

Photo: nata9m/shutterstock

Address: 37 Everglades Avenue, Leura NSW

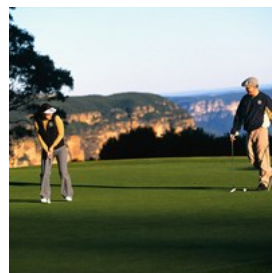
Opening hours: Wed-Mon 10am-4pm, Tue closed

Phone: +61 2 4784 1938

Internet:

www.nationaltrust.org.au/places/everglades-house-gardens

Golf



The picturesque fairways of the Blue Mountains draw in many avid golfers from across the region and around the world. Choose from many notable courses, all with sensational views of the World Heritage wilderness.

Wentworth Falls Country Club

Blaxland Road, Wentworth Falls NSW

+61 2 4757 1202

www.wfcc.com.au/cms

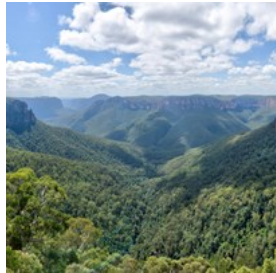
Blackheath Golf & Community Club
Brightlands Avenue, Blackheath NSW
+61 2 4787 8406
blackheathgolf.com.au

Leura Golf Club
Sublime Point Road, Leura NSW
+61 2 4785 0035
www.leuragolfclub.com.au

Springwood Country Club
84 Hawkesbury Road, Springwood NSW
+61 2 4751 1122
www.springwoodgolfclub.com.au

Photo: Hamilton Lund/Destination NSW for the Blue Mountains
Internet: www.visitnsw.com/destinations/blue-mountains/golf

Govetts Leap Lookout



Govetts Leap Lookout is a popular spot to stop and view the spectacular panorama before descending into the Grose Valley. Here you'll find

one of the region's more physical walks where you can view the towering cliffs leading back up to Perry Lookdown and Evans Lookout. At the top of the escarpment is a picnic ground, toilets and access to cliff top walks, including the Fairfax Heritage Track which is suitable for wheelchairs and prams.

Photo: Jacques Bopp/unsplash
Address: Cliff Top Track, Blue Mountains National Park NSW
Opening hours: Accessible at all times
Internet: www.nationalparks.nsw.gov.au/things-to-do/lookouts/govetts-leap-lookout

Leura Cascades Picnic Area

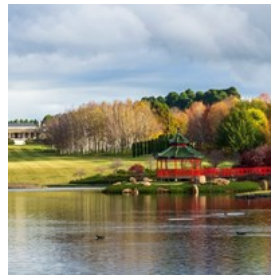


Leura Cascades is a popular picnic area set amid tall eucalypts. Take a walk beside the nearby rapids on Leura Falls Creek, down to Bridal

Veil Falls and Leura Falls. Other longer walks take you along the cliff tops to Echo Point or down through the Leura Forest and via the Federal or Dardanelles Passes to Katoomba.

Photo: NPWS/Destination NSW for the Blue Mountains
Address: Leura Falls Creek, Leura NSW
Internet: www.nationalparks.nsw.gov.au/things-to-do/picnic-areas/leura-cascades-picnic-area

Mayfield Garden

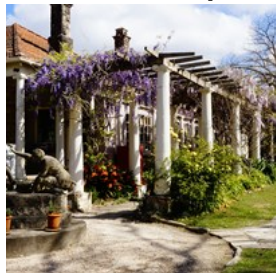


Lovers of beautiful gardens will be delighted with Mayfield Garden, one of the world's largest privately owned cool-climate gardens.

Over 64 hectares, it includes the Water Garden that features an obelisk pond and follies such as a blue-stone bridge and a copper tree fountain. Inspired by the grandeur of English country garden estates, enjoy the tranquillity and browse in the nursery and shop. The Mayfield Garden Cafe serves seasonal, freshly prepared food.

Photo: Ev Ko/unsplash
Address: 530 Mayfield Road, Oberon NSW
Opening hours: Daily 9am-4:30pm
Phone: +61 2 6336 3131
Internet: mayfieldgarden.com.au

Norman Lindsay Gallery & Museum



Recognised as one of Australia's most renowned artists and authors, Norman Lindsay made his home in the Blue Mountains and

produced an array of drawings, etchings, woodcuts, watercolours and sculptures. As the author of *The Magic Pudding*, a children's classic, he is regarded as one of Australia's literary icons. His sandstone home is now a museum which displays his artistic work as well as his superb gardens.

Photo: Chris Carter/National Trust of Australia/Destination NSW for the Blue Mountains

Address: 14 Norman Lindsay Crescent, Faulconbridge NSW

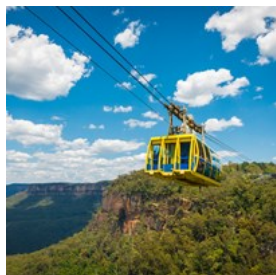
Opening hours: Thu-Mon 10am-4pm, Tue & Wed closed

Phone: +61 2 4751 1067

Internet:

www.nationaltrust.org.au/places/norman-lindsay-gallery

Scenic World



At Scenic World you choose how you take in the spectacular sites of the Three Sisters, Katoomba Falls and Jamison Valley.

Impressive 360-degree views are the highlight of Scenic Skyway's glass-bottomed carriage.

Travelling 270 metres above ancient ravines, it's Australia's highest cable car. You can also ride on the Scenic Railway, the world's steepest passenger railway, and discover the thrill of a 52-degree incline. For a gentler experience, descend into the valleys on Scenic Cableway to see nature at its most spectacular and then amble along the 2.4-kilometre elevated Scenic Walkway through a towering Jurassic rainforest. Unlimited rides on all four experiences are

included in the one ticket price.

Photo: mastersky/shutterstock

Address: Corner Violet Street & Cliff Drive, Katoomba NSW

Opening hours: Opening hours vary seasonally

Phone: +61 2 4780 0200

Internet: www.scenicworld.com.au

Three Sisters



The Three Sisters are a famous rock formation in the Blue Mountains. Offering panoramic views into the Jamison Valley, these three rocky

pinnacles on the edge of the escarpment at Echo Point, Katoomba, have become an iconic symbol for the Blue Mountains. The Three Sisters can be viewed from the main Echo Point lookout or the Queen Elizabeth and Prince of Wales lookouts on the lower levels. A walk from behind the Echo Point Visitor Information Centre will lead you to the top of the Three Sisters via Honeymoon Bridge from the Giant Stairway.

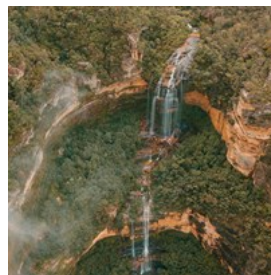
Photo: Arjun Komath/unsplash

Address: Echo Point, off Great Western Highway, Katoomba NSW

Opening hours: Accessible at all times, floodlit after 10:30pm

Internet: www.nationalparks.nsw.gov.au/things-to-do/walking-tracks/three-sisters-walk

Wentworth Falls



Within Blue Mountains National Park, five minutes from the highway, is one of the most majestic waterfalls on the plateau. The falls

occur where the Jamison Creek drops over the escarpment and plunges 297 metres over the upper and lower falls into a large pool before flowing down the creek into the Valley of the

Waters. Bushwalks in the area vary from short 10 minutes to full day walks in the valley. National Parks and Wildlife Services produce a booklet with maps and information on the walks. Barbecue and picnic facilities are available and it is about two kilometres from Wentworth Falls train station.

Photo: Brayden Stanford/pexels

Address: Falls Road, Wentworth Road NSW

Opening hours: Accessible at all times, floodlit after 10:30pm.

Internet: www.visitnsw.com/destinations/blue-mountains/katoomba-area/wentworth-falls

Blue Mountains Music Festival



Blue Mountains Music Festival of Folk, Blues and Roots is a three day festival of folk, roots and blues music, featuring selected artists from

around the world and across Australia. In a variety of venues in Katoomba, see and hear world-class musicians in an intimate and relaxed atmosphere that has been raved about by both performers and audiences.

All weekend the site is alive with the sounds of acoustic guitars, dobros, mandolins, fiddles, accordions, concertinas, bouzoukis, banjos, pianos, drums, percussion, flutes, pipes, whistles and voices. Food and craft stalls, the poet's brunch, children's entertainment and performance workshops fill out the on site atmosphere.

The festival precinct is a short stroll from Katoomba railway station and the buzzing strip of cafes, restaurants and shops that lead you down to the site.

Photo: Blue Mountains Music Festival/Destination NSW for the

Blue Mountains

Address: Katoomba R.S.L, Lurline Street, Katoomba NSW

Opening hours: Held yearly over three days in March

Internet: www.bmff.org.au

Blackheath Rhododendron Festival



During the Annual Rhododendron Festival, the Blackheath Village comes alive with entertainment and street stalls. The Grand Parade

will take place on the first Saturday in November. The Annual Art Show is held at the Blackheath Community Centre with all items for sale, with over 300 exhibits including traditional and contemporary works.

The Campbell Rhododendron Gardens are always open for a visit.

Photo: Destination NSW for the Blue Mountains

Address: Blackheath Village, Wentworth Street, Blackheath NSW

Opening hours: 1st Saturday in November

Internet: rhodofestival.org

RESTAURANTS & BARS



Destination NSW for the Blue Mountains

The Blue Mountains are home to many committed chefs who create delicious dishes using fresh seasonal produce for which the area is renowned. But it's not only the award-winning restaurants; boutique bakeries, artisan

producers of fine foods, and farmers markets ensure the Blue Mountains has an abundance of great food. Influences include Asian, French and other European cuisine, but contemporary Australian is the typical menu choice attributed to the region.

The Lookout Echo Point



Perched on the edge of the Blue Mountains Echo Point escarpment, with breathtaking views of the Jamison Valley, The Lookout Echo Point is a world-class food, wine, and hospitality destination, unrivalled by any other venue in the mountains.

The Lookout boasts two dining concepts: the Milkbar, perfect for visitors on the go, and Bar NSW, renowned for its wine and beverage list sourced solely from New South Wales. These two concepts provide a pathway for guests from all walks of life to discover and enjoy a culturally rich food and wine experience.

Photo: The Lookout Echo Point/Destination NSW for the Blue Mountains

Address: 33/37 Echo Point Road, Katoomba NSW

Opening hours: Daily 9am-9pm

Phone: +61 2 4782 1299

Internet: thelookoutechopoint.com.au

Avalon



Inside the Art Déco Old Savoy Picture Theatre in Katoomba, Avalon serves delicious food in a dining room with beautiful views of the Jamison Valley. The

meals are prepared in the old projection room, the cocktail bar has taken over from the old

refreshment lounge, and a new floor and wall craft the former theatre room.

Photo: Avalon/Destination NSW for the Blue Mountains

Address: 18 Katoomba Street, Katoomba NSW

Phone: +61 2 4782 5532

Internet: www.avalonkatoomba.com.au

Canton Palace



Canton Palace in Wentworth Falls is a popular local Chinese restaurant which has received many awards. Enjoy authentic Chinese

and Malaysian cuisines in an intimate setting surrounded by traditional red and gold.

Photo: Canton Palace/Destination NSW for the Blue Mountains

Address: 7 Station Street, Wentworth Falls NSW

Phone: +61 2 4757 1868

Internet: www.cantonpalace.com.au

Darley's Restaurant



Perched on the edge of the magnificent Jamison Valley and overlooking the World Heritage-listed Blue Mountains is the multi award-winning

Darley's Restaurant. Located in the luxurious Lillianfels Resort & Spa, this long-standing fine-dining restaurant is elegant and comfortable.

Photo: Darley's Restaurant/Destination NSW for the Blue Mountains

Address: Lillianfels Blue Mountains Resort & Spa, 5/19

Lillianfels Avenue, Katoomba NSW

Phone: +61 2 4780 1200

Internet: www.lillianfels.com.au/dining/darleys

Thai Square



Thai Square delights diners with its Thai cuisine in a pretty garden setting. The menu features traditional favourites including a range of stir-fries with your choice of tofu, chicken, beef, pork, seafood, duck or lamb. Try the signature Thai Square stir fry.

Photo: Jacek Chabraszewski/shutterstock
Address: 130 Megalong Street, Leura NSW
Opening hours: Daily 11:30am-2:30pm / 5pm-10pm
Phone: +61 2 4784 2477
Internet: thaisquare.com.au

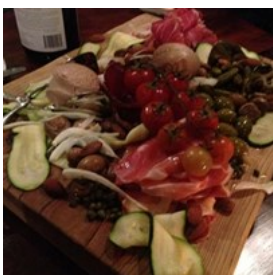
The Conservation Hut



Enjoy modern Australian cuisine and spectacular views of the Jamison Valley at the Conservation Hut in the Valley of the Waters, located in beautiful Wentworth Falls. This delightful café and restaurant serves a scrumptious breakfast and a hearty lunch, and during the summer months, offers a sunset dinner service.

Photo: Lola Hervas/shutterstock
Address: 92 Fletcher Street, Wentworth Falls NSW
Phone: +61 2 4711 0110
Internet: www.conservationhutcafe.au

Ateş Blackheath



Ateş is housed within the former Blackheath bakery built in the late 19th century. The restaurant uses fresh seasonal produce from the region, serving Mediterranean share plates and fun

wines. The philosophy of Ateş is simple: honest food and a commitment to re-discover the enjoyment and pleasure in the food we eat.

Photo: Destination NSW for the Blue Mountains
Address: 33 Govetts Leap Road, Blackheath NSW
Phone: +61 472 793 326
Internet: www.atesblackheath.com

CAFÉS



James Horan/Destination NSW for the Blue Mountains

Café society is thriving in the Blue Mountains. Enjoy quality coffee and tea as well as gourmet breakfast and lunch. For a relaxed sip, take a moment in this splendid panorama of mountains and forests, and enjoy the invigorating crisp air and the subtle natural fragrance of eucalyptus.

Cafe 2773



Funky café by day, tapas with a twist at night — 2773 on Ross Street in Glenbrook is the place to meet friends and family to eat, connect and play together. Located at the foot of the Blue Mountains, this café is a heaven for your palate and soul with an enclosed outdoor play area for kids, a farm with miniature pigs, chickens and veggie patch and a comfortable, chilled out environment.

At night, the wood fired pizza oven heats up,

fairy lights come on and the mood shifts to more romantic dining from a menu catering for a diverse range of tastes, plating up temptations such as pork short ribs with Peking sauce. Pair salt and pepper lamb cutlets, fennel and cumin salt, with sides like ripped and torn baked potato, sea salt and thyme and perhaps Parmesan crumbed crispy Brussels sprouts.

Photo: Cafe 2773/Destination NSW for the Blue Mountains
Address: 19 Ross Street, Glenbrook NSW
Phone: +61 2 4739 2773
Internet: www.2773glenbrook.com.au

Leura Gourmet Café & Deli



Enjoy breakfast, brunch or lunch at this charming café and deli. Various takeaway options also fill the deli counter, and choose from a delicious range of condiments, deli-meats, jams, preserves, gelato, oils and other gourmet treats.

Photo: Destination NSW for the Blue Mountains
Address: Leura Shopping Centre, 179 Leura Mall, Leura, NSW
Phone: +61 2 4784 1438
Internet: www.instagram.com/leurgourmet

Lily's Pad Café & Takeaway



Gluten free, out-of-the-oven sweets are the speciality here. Choose from a delicious range of homemade breads, pies and quiches. All-day breakfasts, lunch and takeaway options are on offer at this café set in a pretty courtyard down a lane.

Photo: Destination NSW for the Blue Mountains
Address: 19 Grose Street, Leura NSW

Phone: +61 2 4784 1033
Internet: www.instagram.com/lilys_pad_cafe

The Lolly Bug



Visitors are spoilt for choice at The Lolly Bug in Little Hartley with over 1,500 varieties of lollies from all over the world. You can enjoy takeaway coffee every day of the week, and on weekends delight in Devonshire teas and other beverages. The coffee is locally roasted Fish River Coffee.

Photo: Matt Schwartz/unsplash
Address: 2297 Great Western Highway, Little Hartley NSW
Phone: +61 427 451 416
Internet: thelollybug.com.au

The Red Door Café



All the anticipated fare for brunch lovers who are particularly fond of a hearty meal can be found at this café. Pies with salad, hazelnut buttered mushrooms on toast, and grilled halloumi, poached egg and rocket on sourdough are among the menu highlights.

Photo: Destination NSW for the Blue Mountains
Address: 134 Leura Mall, Leura NSW
Phone: +61 2 4784 1328

True To The Bean



The aroma of fresh coffee attracts locals and visitors to this café. The Belgian waffles, with flavour choices including cinnamon and fig, are delicious. Try the gluten-free cookies and brownies, such as the quinoa chocolate chip

variety. For pure indulgence, enjoy the triple chocolate love brownie.

Photo: Destination NSW for the Blue Mountains
Address: 123 Katoomba Street, Katoomba NSW
Phone: +61 2 4760 8645

Unique Patisserie



Delicious pastries, sweets and beautifully decorated wedding and birthday cakes are made at this creative enterprise. The patisserie also doubles as a popular Malaysian restaurant with incredibly authentic Assam Laksa.

Photo: Faiz Dila/pixabay
Address: 169 Katoomba Street, Katoomba NSW
Opening hours: Mon-Sat 8:30am-9pm, Sun closed
Phone: +61 2 4782 7887

Victory Café



A charming modern Australian café with a daily changing blackboard menu offering freshly made specials. The popular breakfast menu is available until 2pm and an innovative lunch menu features fresh local produce. Take a look at the Jenny Kee mural on the side wall of the cafe and browse the antique market.

Photo: Destination NSW for the Blue Mountains
Address: Victory Theatre Antique Centre, 17-19 Govetts Leap Road, Blackheath NSW
Phone: +61 2 4787 6777
Internet: victorytheatre.com.au

SHOPPING



Destination NSW for the Blue Mountains

Shopping in the charming towns and villages is a delight. Artisan foods, fashion, memorabilia, splendid antiques and beautiful artworks can all be found in the Blue Mountains.

The Blue Mountains Chocolate Company



The Blue Mountains Chocolate Company uses only Belgian couverture and locally sourced, premium-grade ingredients for the flavoured fillings of their handmade chocolates. Choose from more than 50 varieties! Join a chocolate-making course or watch the in-house chocolatier working in the glass-walled kitchen. And enjoy a real hot chocolate and delicious homemade cakes in the café.

Photo: Destination NSW for the Blue Mountains
Address: 176 Lurline Street, Katoomba NSW
Phone: +61 2 4782 7071
Internet:
www.instagram.com/bluemountainschocolatecompany

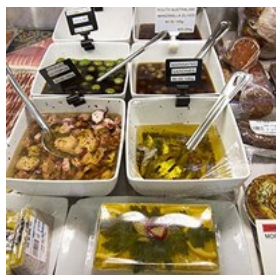
Carrington Cellars & Deli



Make a stop at The Carrington Hotel's Cellars & Deli for great wines and a top-notch selection from the delicatessen. Housed in an old power station, the shop features rows of boutique local and foreign wines, as well as the best deli and gourmet snacks and exotic pantry items.

Photo: Destination NSW for the Blue Mountains
Address: The Carrington Hotel, 15-47 Katoomba Street, Katoomba NSW
Phone: +61 2 4782 0999
Internet: thecarrington.com.au/dine-drink/cellars

Fish & Fowl



Fish and Fowl sells fresh and cooked seafood as well as select poultry and deli goods. The store sources fresh seafood daily from the Sydney Fish Market auction, and also stocks free-range and organic poultry, game, charcuterie, cheeses and other gourmet products.

Photo: Destination NSW for the Blue Mountains
Address: 1 Pioneer Place, Katoomba NSW
Phone: +61 2 4782 4106
Internet: www.instagram.com/fish_and_fowl

Gleebooks



Browse in this quality bookstore with its impressive range of titles covering diverse topics and interests. If a particular book you're looking for is not in store, the friendly staff will order it in for you.

Photo: Gleebooks/Destination NSW for the Blue Mountains
Address: Collier's Arcade Govetts Leap Road, Shop 1, Blackheath NSW
Phone: +61 2 4787 6340
Internet: gleebooks.com.au

Hat Hill Records & Audio



Hat Hill Records & Audio is a commercial fine art gallery and vinyl record store in Blackheath. The gallery presents fine contemporary art created by artists of the Blue Mountains region and beyond.

Photo: Ivan Kurmyshov/shutterstock
Address: 23-25 Govetts Leap Road, Blackheath NSW
Phone: +61 2 4787 5246
Internet: www.hathillgallery.com.au

iKOU



iKOU hand-makes natural bath and body products, natural botanical skin-care, natural wax candles and herbal teas. iKOU's philosophy is to use pure, natural ingredients that are ethically sourced. The range of iKOU's products encourages users to take the time to rest and relax and maintain equilibrium.

Photo: iKOU/Destination NSW for the Blue Mountains
Address: 126 Leura Mall, Leura NSW
Phone: +61 2 4784 1777
Internet: ikou.com.au

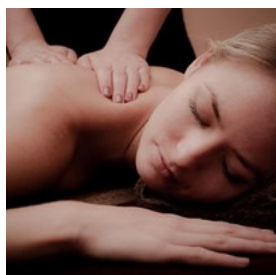
Lost Bear Gallery



The Lost Bear Gallery is home to an extensive collection of contemporary fine art. The gallery features 12 exhibition spaces and an outdoor sculpture garden. You can purchase a range of sculptures in the gallery shop, as well as paintings, ceramics, glass works and cards by the gallery's contemporary artists.

Photo: Destination NSW for the Blue Mountains
Address: 98 Lurline Street, Katoomba NSW
Phone: +612 4782 1220
Internet: lostbeargallery.com.au

Spa Sublime



This multi award-winning day spa provides a private and secluded space to indulge. Located within the stunning grounds of the historic

Mountain Heritage Hotel, Sublime Spa uses only high quality 100% Australian-made products. You can purchase a product from their signature Akorah product range, such as bath milks, essential oils, and herbal teas.

Photo: Destination NSW for the Blue Mountains
Address: 9 Penault Avenue, Katoomba NSW
Phone: +61 2 4782 3113
Internet: www.spasublime.com.au

ACCOMMODATION



James Morgan/Destination NSW for the Blue Mountains

Beautiful panoramas, World Heritage wilderness and a region steeped in history make the Blue Mountains a popular tourist destination. You'll find a great range of accommodation to suit your lifestyle and budget, from youth hostels to luxury resorts.

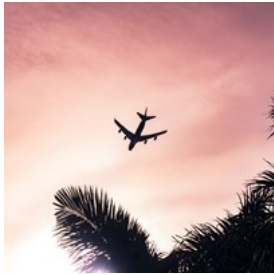
TOURIST INFORMATION



James Horan/Destination NSW for the Blue Mountains

The majestic Blue Mountains are easy to reach from Sydney. Discover the region at your own pace by renting a car, or join one of the many tours that explore this World Heritage-listed wilderness. You can even take a train from Sydney's Central Station to the Blue Mountains; the trip to Katoomba takes only two hours.

Airport



For visitors travelling from overseas, the nearest airport is Sydney Airport. From there, the best means to travel to the Blue Mountains is by

car — about a 50-minute drive to the entrance at Glenbrook. Follow the signs to Parramatta and take the M4 Motorway at Strathfield through to Lapstone and the Blue Mountains.

The trip to Leura or Katoomba takes about 90 minutes from the airport. If you're travelling by car, take the M4 Motorway out of Sydney or take the longer, meandering route via Windsor and Kurrajong along the Bells Line of Road. The rise from the coastal plain begins at Glenbrook, 65 kilometres west of Sydney, and the road passes through many small towns along the way to Leura, Katoomba and on to Blackheath. The iconic rock formation known as the Three Sisters is at Echo Point, Katoomba.

Alternative routes will take you on a more scenic path via Bells Line of Road through Richmond and Mount Tomah, to Bell and across to Mount Victoria. It's a delightful drive and a different introduction to the vast Blue Mountains National Park compared to the Great Western Highway. If coming from the outer west, follow the signs to Lithgow, go through Hartley and enter the Blue Mountains through Victoria Pass which will take you straight to the top of Mount Victoria.

Photo: Eduardo Velazco Guart/unsplash

Public Transport



Having a car in the Blue Mountains offers a far greater opportunity to see the sights, but travelling by public transport to your

destination offers a relaxing alternative. An efficient rail service takes you directly from Sydney Airport to Central Railway Station. Shuttle buses from the airport also take you to Central Station. From here, trains serviced by Transport NSW take you to the Blue Mountains: Wentworth Falls, Leura, Katoomba, Blackheath, Parramatta, Westmead, Penrith and Springwood. They run regularly and more frequently during peak commuter times.

Once you arrive in the Blue Mountains, there are various transport options.

You can take a red double-decker Explorer Bus to the top 30 attractions with a ticket that gives you all-day access to the hop-on, hop-off bus.

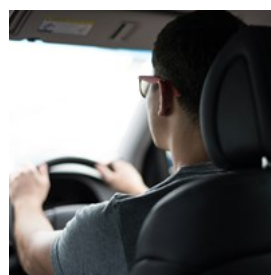
The Blue Mountains Bus Company operates the hop-on, hop-off Trolley Tours around the Katoomba and Leura areas and a public transport system. You can also reserve seats for a bus to the Jenolan Caves.

Photo: MountainAsh/unsplash

Internet:

transportnsw.info/plan/places-to-visit/blue-mountains

Taxis



Taxis are readily available from the stations of Blaxland, Springwood, Wentworth Falls, Leura and Katoomba railway stations. The popular

13Cabs operate in the Blue Mountains, too.

Springwood Taxis

www.springwoodtaxi.com.au

+61 4751 1444

Katoomba Leura Radio Cabs

www.katoombataxi.com.au

+61 2 4782 1311

Blue Mountains Combined Taxis

+61 2 4758 8800

Photo: Art Markiv/unsplash

Medical



In the Blue Mountains region, and Australia more broadly, there are several major pharmacy chains where you can pick up over-the-counter medications, prescription drugs, personal care items, and more. The major pharmacy chains are Blooms The Chemist, Chemist Warehouse, TerryWhite Chemmart, Priceline Pharmacy and Amcal. It's always worth checking the opening hours as these can vary, especially on weekends and public holidays.

There are also many independent pharmacies in the region.

Blue Mountains Pharmacy

Katoomba Village Shopping Centre, 30-34 Parke Street, Katoomba NSW

+61 2 4782 5450

www.bluemountainpharmacy.com

Hazelbrook Pharmacy

Hazelbrook Shopping Village, 192 Great Western

Highway, Hazelbrook NSW

+61 2 4758 6431

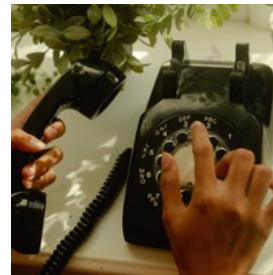
Best Buy Pharmacy

161-163 Leura Mall, Leura NSW

+61 2 4784 1386

Photo: Diana Polekhina/unsplash

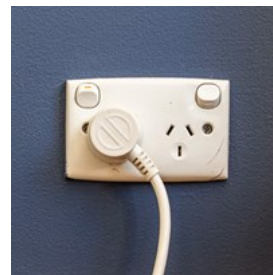
Telephone



Country code: +61 Area Code: (0)2

Photo: Wesley Hilario/unsplash

Electricity



Australia operates on a 230/240V supply voltage and 50Hz frequency. The country uses Type I power plugs, which feature two flat pins forming a 'V' shape, along with a grounding pin. This standard is also commonly used in New Zealand, Argentina, China, and several Pacific island nations. Remember to pack a universal adapter if your devices use a different plug type to ensure hassle-free charging.

Photo: Mitchell Luo/unsplash

Population

30,049

Currency

Australian Dollar (1 AUD=100 cents)

Internet

www.visitnsw.com/destinations/blue-mountains

www.bmcc.nsw.gov.au/visitor-information

www.visitbluemountains.com.au

Newspapers

Destination: Blue Mountains

Blue Mountains Gazette:
www.bluemountainsgazette.com.au
The Echo: www.echo.net.au
Blue Mountains Life Magazine:
www.bluemountainlife.com.au

Emergency numbers

Police, Fire & Ambulance 000

Tourist information

Blue Mountains Visitor Information Centre, Echo Point
Echo Point Road, Katoomba NSW
Open daily 9am–5pm
+61 1300 653 408

Glenbrook Visitor Information Centre
Hammett Place, Glenbrook NSW
Open Mon–Fri 8am–3:30pm, Sat 8:30am–3:30pm, Sun
8:30am–3:30pm
+61 1300 653 408

Blue Mountains Heritage Centre
270 Govetts Leap Road, Blackheath NSW
Open daily 9am–4:30pm
+61 2 4787 8877
www.environment.nsw.gov.au

Oberon Visitor Information Centre
48 Ross Street, Oberon NSW
Open daily 9:30am–5pm
+61 2 6329 8210
www.oberonaustralia.com.au

Seven Valleys Visitor Information Centre
1137 Great Western Highway, South Bowenfels NSW
Open daily 9:30am–4:30pm
+61 1300 760 276
sevenvalleys.com.au

Hartley Historic Site Visitor Centre
51 Old Great Western Highway, Hartley NSW
Open Tue–Sun 10am–4pm, Mon closed
+61 2 6355 2117
www.nationalparks.nsw.gov.au/things-to-do/visitor-centres/hartley-historic-site-visitor-centre

Information is subject to change. Please contact your Lifestyle Consultant for the most up-to-date recommendations.