



Photo: Roxana Bashyrova/Shutterstock.com



Petr Levicek/Shutterstock.com



BestPhotoStudio/Shutterstock.com



joyfull/Shutterstock.com

With a skyline dominated by the imposing Špilberk Castle and the soaring twin spires of the Peter and Paul Cathedral, Brno has an attractive and historic city centre. The name, Brno, might sound like a crossword anagram, but the Czech Republic's second-largest city and capital of Moravia is a vibrant, yet traditional place. Brno boasts stunning architecture, great museums, a crypt, a gorgeous lake—just a tram ride away—and an exciting, beer-filled bar scene without heaving crowds.

### Featured



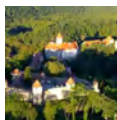
#### BrainFAQ

Do you want to challenge your creativity and intelligence under pressure? Ca...



#### Seg Agency

Brno is Czech Republic's second largest city, and consequently there are mil...



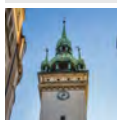
#### Veveří Castle

Brno's second castle soars above the reservoir, surrounded by the suggestive...



#### Brno Reservoir

This is a popular resort and an ideal place for all kinds of water sports: t...



#### Old Town Hall (Stará radnice)

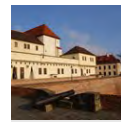
This is the oldest secular building in Brno, combining various architectural...

### Top 5



#### Špilberk Castle (hrad Špil...

Situated on a rocky hill overlooking the city, Špilberk Castle was originall...



#### Brno City Museum – Měnínsk...

With Spilberk Castle as its beautiful seat, the Brno City Museum was founded...



#### Cathedral of St Peter & Paul

Located on the top of the hill known as Petrov, the free-standing Romanesque...



#### Capuchin Monastery And Crypt

Discover the history of the Capuchin order - and have a somehow morbid exper...



#### Villa Tugendhat

This spot was the first UNESCO world heritage site-listed monument of modern...

## THE CITY



Wirestock Creators/shutterstock

Brno is the capital of Moravia and the second largest city in the Czech Republic, right after Prague. In the 19th century, Brno embraced the Industrial Revolution with great enthusiasm and the city was nicknamed "the Manchester of Moravia". However, Brno is also a very green city with lots of parks and lakes where visitors can chill out. The town centre is easy and fun to explore on foot and is an ideal weekend destination with plenty of pivnice (beer halls), vinárny (wine bars), kavárny (coffee houses), cukrárny (cake shops) and restaurace (self-explanatory).

The city is a network of atmospheric cobbled streets lined with shops and restaurants, clustering around the vast open space of the main square, Náměstí Svoboda. Česká is Brno's most famous street and favourite meeting place, where you can find the famous Stopka pivnice.

Brno also has its fair share of cultural icons: it is the birthplace of Milan Kundera - everyone's favourite Czech writer, and home to composer Leoš Janáček. The Janáčkovo Theatre is home to a superb opera and also a centre for classical music concerts.

## DO & SEE



Petr Levicek/Shutterstock.com

In the town centre, easy and fun to explore on foot, tourists can enjoy great museums, historical venues and other interesting sites. Brno is also a very green city with lots of parks and lakes where visitors can chill out and just forget about everyday life.

### Špilberk Castle (hrad Špilberk)



Situated on a rocky hill overlooking the city, Špilberk Castle was originally a royal castle, then converted into a huge Baroque fortress and secure prison known as the 'Dungeon of Nations' because of its international guest list of rebels against the oppressive Habsburg regime.

Photo: Kirk/cc by-sa 3.0/Wikimedia(image cropped)

Address: Špilberk 210/1, Brno

Opening hours: April-September: daily 10am-6pm.

October-March: Tue-Sun 9am-5pm

Phone: +420 542 123 611

Internet: [www.spilberk.cz/en](http://www.spilberk.cz/en)

Email: [muzeum.brno@spilberk.cz](mailto:muzeum.brno@spilberk.cz)

### Brno City Museum – Měnínská Brána



With Spilberk Castle as its beautiful seat, the Brno City Museum was founded in 1904 and it's one of the main cultural venues in the city.

"Gateway to Time", for example, is a long-running archaeological exhibition showing visitors primeval localities and medieval finds from Brno and surroundings.

Photo: Bjalek Michal/cc by-sa 3.0/Wikimedia(image cropped)

Address: Špilberk 210/1, Brno

Opening hours: April-September: daily 10am-6pm.

October-March: Tue-Sun 9am-5pm

Phone: +420 542 123 611

Internet: [www.spilberk.cz/en](http://www.spilberk.cz/en)

Email: [muzeum.brno@spilberk.cz](mailto:muzeum.brno@spilberk.cz)

### Cathedral of St Peter & Paul



Located on the top of the hill known as Petrov, the free-standing Romanesque basilica was rebuilt as a Gothic cathedral in the 13th

century and then converted to the Baroque style in the 18th century. The twin spires are depicted on the Czech 10Kč coin.

Photo: joyfull/Shutterstock.com

Address: Petrov 9, Brno

Opening hours: Mon-Sat 8:15am-6:30pm, Sun 7am-6:30pm

Phone: +420 543 235 031

Internet: [www.katedrala-petrov.cz](http://www.katedrala-petrov.cz)

Email: [kancelar@katedrala-petrov.cz](mailto:kancelar@katedrala-petrov.cz)

### Capuchin Monastery And Crypt



Discover the history of the Capuchin order - and have a somehow morbid experience - while paying a visit to this venue, where you will get the

chance to see the Capuchin monastery's crypt! Here, mummified bodies of 150 monks are displayed and preserved naturally since 1784 in the dry atmosphere (visitors will also notice that many were buried with their boots on).

Photo: vvoe/Shutterstock.com

Address: Kapucinské náměstí 5, Brno

Opening hours: April-October: Mon-Sat 9am-12pm and 1pm-6pm, Sun 11am-5pm. November-March: Mon-Sat

10am-4pm, Sun 11am-4:30pm. Closed on Easter and

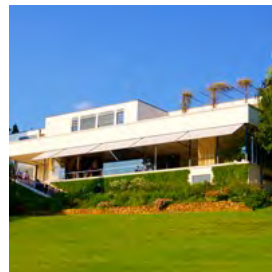
Christmas

Phone: +420 511 140 053

Internet: [www.hrobka.kapucini.cz](http://www.hrobka.kapucini.cz)

Email: [hrobka@kapucini.cz](mailto:hrobka@kapucini.cz)

### Villa Tugendhat



This spot was the first UNESCO world heritage site-listed monument of modern architecture in the Czech Republic, and only the fourth worldwide

to receive such a distinction: this fact alone should convince you to discover it as soon as possible.

This glass-fronted villa was designed in 1928 by the famous German architect Ludwig Mies van der Rohe, and its minimalistic design is still relevant and charming. Make sure to book a visit to Villa Tugendhat even months before you get there.

Photo: jn koste / Shutterstock.com

Address: Černopolní 45, Brno

Opening hours: March-December: Tue-Sun 10am-6pm.

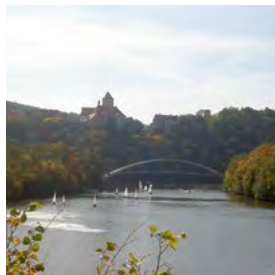
January-February: Wed-Sun 9am-5pm

Phone: +420 515 511 015 or +420 515 511 017

Internet: [www.tugendhat-villa.cz/en](http://www.tugendhat-villa.cz/en)

Email: [info@tugendhat.eu](mailto:info@tugendhat.eu)

### Brno Reservoir



This is a popular resort and an ideal place for all kinds of water sports: the banks are lined with sport facilities, restaurants and pubs. Moreover, the reservoir/lake stretches up for 15 km to the lost-in-time hamlet of Veverská Bítýská. A ferry boat chugs between Brno and Veverská Bítýška from April to September and will take you to this beautiful site.

Photo: Dezidor/public domain/Wikimedia(image cropped)

Address: Brněnská přehrada, Brno

Internet: [www.dpmb.cz/en](http://www.dpmb.cz/en)

### Veveří Castle



Brno's second castle soars above the reservoir, surrounded by the suggestive Podkomorské woods. It is a Gothic royal castle which was also used as a hunting lodge, hosting today many cultural and social events.

Photo: Dominik Matus/cc by-sa 3.0/Wikimedia(image cropped)

Address: State Castle, Veverská Bítýška, Brno

Phone: +420 549 420 164

Internet: [www.veveri.cz](http://www.veveri.cz)

Email: [veveri@npu.cz](mailto:veveri@npu.cz)

### Old Town Hall (Stará radnice)



This is the oldest secular building in Brno, combining various architectural styles, and was also the seat of the city administration from the 14th century to 1935. In the passage of the tower, you will also notice the famous Brno Dragon (actually a crocodile) and a wheel hanging from the ceiling.

Photo: Leonhard Niederwimmer/unsplash

Address: Radnická 8, Brno

Phone: +420 542 427 150

Internet: [ticbrno.cz/en/old-town-hall](http://ticbrno.cz/en/old-town-hall)

Email: [info@ticbrno.cz](mailto:info@ticbrno.cz)

### VIDA!



When in Brno, VIDA! science centrum is a great choice for a rainy afternoon: this spot is particularly children-friendly, so come here with your family and have some fun together while learning interesting science-related facts!

Photo: CroMary/Shutterstock.com

Address: Křížkovského 554/12, Brno

Opening hours: Mon-Fri 9am-6pm. Sat-Sun 10am-6pm

Phone: +420 515 201 001

Internet: [www.vida.cz](http://www.vida.cz)

Email: [info@vida.cz](mailto:info@vida.cz)

### Zoo Brno



This is another option for a day of extreme fun for the whole family: here, you will have the chance to see majestic polar bears, tigers and pandas

in real life. Wear comfortable shoes, and grab something to eat and a blanket for a picnic.

Photo: Dušan Veverkolog/unsplash

Address: U Zoologické zahrady 46, Brno

Opening hours: November-February daily 9am-4pm. March & October 9am-5pm. April-September 9am-6pm

Phone: +420 546 432 311

Internet: [www.zoobrno.cz/en](http://www.zoobrno.cz/en)

Email: [zoo@zoobrno.cz](mailto:zoo@zoobrno.cz)

## 10 - Z



Do you want to learn more about the dark past of this area, going back to its communist past? Then, pay a visit to 10-Z, code name for the top secret nuclear bunker situated right in the heart of Brno. This is definitely a unique experience.

Photo: Sergey Kamshylin/Shutterstock.com

Address: Husova ulice, opposite house number 12, Brno

Phone: +420 542 210 622

Internet: [www.10-Z.cz](http://www.10-Z.cz)

Email: [husova10Z@gmail.com](mailto:husova10Z@gmail.com)

## Labyrinth under Zelný trh square



This attraction is a large labyrinth of medieval hallways and mysterious, dark cellars. You can explore it during a tour offered by knowledgeable guides, dressed up in medieval clothes. Come here and discover the secrets of this spot!

Photo: Millenium187/public domain/Wikimedia(image cropped)

Address: Zelný trh 21, Brno

Opening hours: Tue-Sun 9am-6pm

Phone: +420 542 212 892

Email: [labyrint@ticbrno.cz](mailto:labyrint@ticbrno.cz)

## Museum of Romani Culture



It's undoubtedly great to just walk around the city, grabbing some traditional food every now and then, but if you really want to get to know more about the culture of the place you are visiting, the best thing to do is to visit a museum like this one. Here you will admire numerous exhibitions regarding the origins of Romani people and what they have been through, especially in the last centuries.

Photo: Ben Skála, Benfoto/cc by-sa 3.0/Wikimedia(image cropped)

Address: Bratislavská 246/67, Brno

Opening hours: Tue-Fri 10am-6pm. Sun 10am-6pm

Phone: +420 545 581 206

Internet: [www.rommuz.cz/language/en](http://www.rommuz.cz/language/en)

Email: [sekretariat@rommuz.cz](mailto:sekretariat@rommuz.cz)

## BrainFAQ



Do you want to challenge your creativity and intelligence under pressure? Call some friends and spend a day at BrainFAQ, an escape game where you will face different scenarios and stories such as escaping from a psychiatric hospital unlocking mechanisms and solving puzzles!

Photo: oneinchpunch/Shutterstock.com

Address: Orlí 27, Brno

Opening hours: Daily 11:30am-22:30pm

Phone: +420 776 373 813

Internet: [www.brainfaq.cz/en](http://www.brainfaq.cz/en)

Email: [info@brainfaq.cz](mailto:info@brainfaq.cz)

### Botanická Zahrada (Botanical Garden)



You don't necessarily need to go far away from the city to enjoy a peaceful and natural environment: the renowned Botanical Garden, for example, is located right in the centre of Brno. Sit on a bench during a sunny day and have a chat with friends, or just contemplate the beauty around you.

Photo: Ivan Rusek/Shutterstock.com

Address: Kotlářská 2, Brno

Opening hours: April-September: daily 9am-5pm.

October-March: daily 9am-3pm. Check the website for special closing days

Phone: +420 549 495 660

Internet: [www.sci.muni.cz](http://www.sci.muni.cz)

Email: [zahrada@sci.muni.cz](mailto:zahrada@sci.muni.cz)

### Seg Agency



Brno is Czech Republic's second largest city, and consequently there are millions of things to do and see; a funny and fast way to do it is riding a Segway! Two hours will be enough to discover the most popular attractions in town, guided by an experienced guide who will make the trip even more interesting sharing anecdotes about different spots!

Photo: mariait/Shutterstock.com

Address: Milady Horákové 1, Brno

Opening hours: Mon-Fri 10am-6pm (for tours at different times, make a reservation)

Phone: +420 776 050 600

Internet: [www.segagency.cz](http://www.segagency.cz)

Email: [info@segagency.cz](mailto:info@segagency.cz)

### Koupaliště Kraví Hora



Koupaliště Kraví Hora, surrounded by the stunning nature of Brno, is the perfect place to chill with some friends, have fun with the family

or just work out by yourself. There is a small pool for children, a sauna and a big outdoor pool with a great view over the city.

Photo: spass/Shutterstock.com

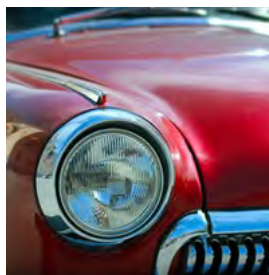
Address: Údolní 76, Brno

Phone: +420 543 216 434

Internet: [www.kravihora-brno.cz](http://www.kravihora-brno.cz)

More Info: For opening hours, check the website.

### Technical Museum



Are you a tech-enthusiast? Then, visit the famous Technical Museum of Brno, where countless disassembled machines and motors are displayed for you to understand how they work, with a little help from the guides that are always available for clearer explanations. Don't miss out the cars, airplanes and steam engines.

Photo: BGodunoff/Shutterstock.com

Address: Purkyňova 105, Brno

Opening hours: Tue-Fri 9am-5pm. Sat-Sun 10am-6pm

Phone: +420 541 421 411

Internet: [www.technicalmuseum.cz](http://www.technicalmuseum.cz)

Email: [info@technicalmuseum.cz](mailto:info@technicalmuseum.cz)

### Brno Astronomical Clock



A Swedish general who laid siege on the city of Brno towards the end of the 30 Year War was faced with a stalemate and, one day, promised

the city of Brno to lift the siege if the city would not fall until noon the same day. Residents of Brno decided to turn the clock so it would read noon an hour early, and the general kept his promise. In memory of this occurrence, the Astronomical clock has been installed, which releases a stream of marbles every day at 11 o'clock: these are sought-after souvenirs.

Photo: Min C. Chiu/Shutterstock.com

Address: Svobody Street 10, Brno

## DINING



Stepanek Photography/Shutterstock.com

The national dish of the Czech Republic is roast pork with sauerkraut and knedlíky—huge coin-shaped dumplings sliced off from a long roll. All this is washed down with beer—Czech pilsner might be the best in the world.

Vegetarians used to be faced with a choice of fried cheese or chips, but now the situation is much better, with an abundance of Italian eateries. Brno also has several first-class vegetarian restaurants, listed below. Desserts are hearty and include exquisite ice cream, thick Turkish coffee, and some interesting liqueurs and digestives to round off a typical blow-out.

## Rebio



This centrally located vegetarian restaurant offers healthy and elegantly presented dishes, and serves dinners and buffet-style lunches. The cost of your meal will depend on the weight of the food you've purchased.

Photo: Taken / pixabay.com

Address: Mečová 2, Brno

Opening hours: Mon-Fri 10am-8pm. Sat 11am-8pm. Sun 11am-7pm

Phone: +420 543 214 878

Internet: [www.rebio.cz](http://www.rebio.cz)

Email: [rebio@rebio.cz](mailto:rebio@rebio.cz)

## Borgo Agnese



Founded in 2008, this restaurant prepares Mediterranean dishes such as "mushroom ravioli" cooked to perfection, using fresh and seasonal products. The atmosphere here is slightly fancy as proved by the impeccable service, always available to advice the guests on the wines or the menu.

Photo: Andrey Bayda/Shutterstock.com

Address: Kopečná 43, Brno

Opening hours: Mon-Sat 12pm-12am. Sun 12pm-10pm

Phone: +420 515 537 500

Internet: [www.borgoagnese.cz](http://www.borgoagnese.cz)

Email: [info@borgoagnese.cz](mailto:info@borgoagnese.cz)

### The Immigrant



One of the best places in Brno to grab a burger is "The Immigrant": here, in fact, the portions are very generous and meat and fries are just delicious.

Plus, it's a foreigner-friendly spot where you'll find lots of tourists (but also locals) indulging in a yummy, international meal. Pay a visit during football or rugby matches and enjoy the vibrant atmosphere created by all the people from different countries who watch a game while drinking good beers and getting to know each other.

Photo: LuckyImages/Shutterstock.com

Address: Veveří 57, Brno

Opening hours: Mon-Thu 11am-11pm. Fri-Sat 12pm-2am. Sun 12pm-11pm

Phone: +420 792 202 231

Internet: [www.theimmigrant.cz](http://www.theimmigrant.cz)

Email: [bookings@theimmigrant.cz](mailto:bookings@theimmigrant.cz)

### Bar, Který Neexistuje



Bar Který Neexistuje, literally "the Bar that doesn't exist", is one of the most stylish places in town: come here for a tasty burger and an

explosive cocktail. Just remember to reserve a table because this spot, due to its popularity, is always pretty crowded.

Photo: kryzhov/Shutterstock.com

Address: Dvořákova 1, Brno

Opening hours: Sun-Tue 5pm-2am. Wed-Thu 5pm-3am.

Fri-Sat 5pm-4am

Phone: +420 734 878 602

Internet: [www.barkteryneexistuje.cz](http://www.barkteryneexistuje.cz)

Email: [rezervace@turbomost.cz](mailto:rezervace@turbomost.cz)

### Pegas



A welcoming pub and pension situated in a very convenient area, right by the Špilberk Castle and one of the most important Brno squares, Liberty

Square. Grab one of their peculiar beers with a tasty meal, such as perfectly grilled meat with fries, or sausages accompanied by yummy sauces.

Photo: stockcreations / Shutterstock.com

Address: Jakubská 120/4, Brno

Opening hours: Mon-Tue & Sat 10am-12am. Fri 10am-1am. Sun 11am-11pm

Phone: +420 542 210 104

Internet: [brnorestaurencepivnice.hotelpegas.com/en](http://brnorestaurencepivnice.hotelpegas.com/en)

Email: [reception@hotelpegas.cz](mailto:reception@hotelpegas.cz)

### Butchers grill & pasta



At Butchers you will probably eat the best steak in Brno, cooked to perfection by the knowledgeable hands of the chefs. The name is

not the most appealing for vegetarians, but you'll also find a wide variety of meat-free dishes, such as delectable pasta with different sauces and rich side dishes.

Photo: HLPPhoto/Shutterstock.com

Address: Dobrovského 29, Brno

Opening hours: Mon-Sun 11:30am-11:30pm

Phone: +420 734 309 499

Internet: [www.butchers.cz/en](http://www.butchers.cz/en)

Email: [brno@butchers.cz](mailto:brno@butchers.cz)

### Pavillon



This sophisticated, spacious restaurant is characterised by modern interior design and a bright environment, due to the glass wall dividing the indoor and outdoor rooms. Come to Pavillon for a business dinner or another special occasion and try their elegantly presented creations, such as the Caesar salad with marinated salmon.

Photo: Topnatthapon/Shutterstock.com

Address: Jezuitská 6, Brno

Opening hours: Mon-Sat 11am-11pm. Sun 12pm-10pm

Phone: +420 607 005 905

Internet: [www.restaurant-pavillon.cz/en](http://www.restaurant-pavillon.cz/en)

Email: [info@restaurant-pavillon.cz](mailto:info@restaurant-pavillon.cz)

### Cattani



At Cattani you will satisfy every desire you may have when it comes to pasta: there are infinite options of homemade pasta and sauces whose quality is simply excellent. Try a classic tomato sauce pasta or one of the most peculiar ones, such as "gorgonzola con noci": you simply can't go wrong here.

Photo: Galina Mikhailishina/Shutterstock.com

Address: Veveří 6, Brno

Opening hours: Daily 11am-10pm

Phone: +420 776 611 883

Internet: [www.cattani.cz](http://www.cattani.cz)

Email: [corrado@cattani.cz](mailto:corrado@cattani.cz)

### Stopkova Plzenska Pivnice



One of the pleasures of visiting a new country is discovering the local cuisine, enriching yourself with new aromas and flavours: Stopkova Plzenska Pivnice is the place to visit not only for Czech food, but also for local beers.

Photo: TristanBM/Shutterstock.com

Address: Ceska 163/5, Brno

Opening hours: Daily 11am-12am

Phone: +420 517 070 080

Internet: [www.kolkovna.cz](http://www.kolkovna.cz)

Email: [info@stopkovapivnice.cz](mailto:info@stopkovapivnice.cz)

### Burger Inn



What if, for a night, you just wanted to stick to a good old burger? In this case, your best option would be the Burger Inn, an American-style spot

where you will be served mouth-watering burgers and crispy fries.

Photo: RobertoCardona / pixabay.com

Address: Běhounská 9, Brno

Opening hours: Sun-Tue 11am-10pm. Fri-Sat 11am-11pm

Phone: +420 775 253 799

Internet: [www.burgerinn.cz](http://www.burgerinn.cz)

Email: [burgerinn60200@gmail.com](mailto:burgerinn60200@gmail.com)

### Forky's



Forky's is a vegan restaurant whose menu features countless meat-free options such as Vietnamese rice noodles, fried tofu and fresh

veggies in every shape. Furthermore, this spot is nicely decorated and set in a pretty spacious and

bright venue.

Photo: Devanath / pixabay.com

Address: Jakubské náměstí 1, Brno

Opening hours: Mon-Fri 11am-9pm. Sat 12pm-9pm. Sun 12pm-6pm

Phone: +420 542 210 158

Internet: [www.forkys.eu/en](http://www.forkys.eu/en)

Email: [info@forkys.cz](mailto:info@forkys.cz)

## CAFES



*kpgolfpro / pixabay.com*

This Czech city has a long tradition in terms of coffee, as proved by the famous "Brno Coffee Week" during which coffee tasting, coffee presentations, and coffee-making competitions take place. Wandering around the city centre, you'll come across tons of lovely cafes, but make sure to check the ones listed here!

### Kafec



Founded in 2009, this cafe used to serve only standard Italian espresso, but it has now extended its menu to several types of high quality coffee

prepared with local roasters. They are so concerned about their products that they also organise the "Roaster Degustation", through which they show their guests how the coffee is prepared!

Photo: [baranq/Shutterstock.com](https://www.shutterstock.com/author/baranq)

Address: Orlí 16, Brno

Opening hours: Mon-Fri 8am-8pm. Sat-Sun 9am-8pm

Phone: +420 537 021 965

Internet: [www.kafec.cz](http://www.kafec.cz)

Email: [brnensky@kafec.cz](mailto:brnensky@kafec.cz)

### Gill's Coffee



This brand new coffee shop is located right opposite the already mentioned Kafec and it's a gathering spot for coffee-lovers because of

the quality of every item on the menu. Moreover, the modern interior design creates a laid-back ambience and also features a world map showing the origin of their coffee brews.

Photo: [PublicDomainPictures / pixabay.com](https://www.pixabay.com/public-domain-pictures/)

Address: Veveří 456/9, Brno

Opening hours: Mon-Fri 8am-7pm. Sat 9am-3pm

Phone: +420 541 128 338

Internet: [www.gills.cz](http://www.gills.cz)

### Cafe Mitte



This centrally located, cosy cafe is always full of young people and students who love the coffee offered here not only because it helps

them studying more, but also because it's simply delightful. Furthermore, the wooden interior design adds a retro feel that will enchant you.

Photo: [Chevanon Photography/pexels](https://www.pexels.com/chevanon-photography/)

Address: Panská 11, Brno

Opening hours: Mon-Sat 8am-8pm. Sun 9am-8pm

Phone: +420 734 622 340

Internet: [en.hostelmitte.com](http://en.hostelmitte.com)

Email: [info@hostelmitte.com](mailto:info@hostelmitte.com)

### V Melounovém cukru



This hidden gem is not located in one of the crowded major touristic destinations, but it's still pretty easy to reach from the city centre. Adding to

the charm of V Melounovém cukru (literally: "in a sugar of water melon"), delightful homemade cakes are also served every day.

Photo: Zaretska Olga/Shutterstock.com

Address: Františkánská 17, Brno

Opening hours: Mon-Fri 8am-9pm. Sat 9am-8pm. Sun 10am-8pm

Phone: +420 774 422 478

Email: vendula.smekalova@gmail.com

### Coffee Fusion



You will definitely fall in love with this cafe, not only because of the welcoming atmosphere prevailing here, but also for the obvious quality of

every item on the menu. Founded in 2011, it's located in the city centre, so it also has a perfect location for a quick stop from sightseeing.

Photo: New Africa/shutterstock

Address: Jánská 25, Brno

Opening hours: Mon-Fri 9am-8pm

Phone: +420 604 382 032

### BARS & NIGHTLIFE



Sebastian Schuppik/unsplash

The Moravian's love of beer is well-documented. Bars are usually very full, very smoky, and quite often the domain of middle-aged men. However, pick a venue from the list below and you won't be disappointed by the genuine pub experience.

As a university town, Brno has a young, hip population and a great nightlife scene with a great choice of trendy discos, raves, alternative gigs, jazz and world music venues, opera and art-house cinema—everyone will find something to do once the sun goes down.

### Stopkova Plzeňská Pivnice



If you want to immerse yourself in the Czech culture, you have to pay a visit to Stopkova Plzeňská Pivnice, an authentic pub in Czech style! This

long-running beer bar is now very appreciated and visited by tourists, but it keeps serving excellent pilsner and traditional Moravian cuisine, maintaining a traditional feel.

Photo: Valentyn Volkov/Shutterstock.com

Address: Ceska 163/5, Brno

Opening hours: Daily 11am-12am

Phone: +420 517 070 080

Internet: [www.kolkovna.cz](http://www.kolkovna.cz)

Email: [info@stopkovapivnice.cz](mailto:info@stopkovapivnice.cz)

### Pegas



A welcoming pub and pension situated in a very convenient area, right by the Špilberk Castle and one of the most important squares in Brno, Liberty

Square. This peculiar bar has its own micro-brewery, and it's actually the only place where you can sample their unique Pegas beer.

Photo: g-stockstudio/Shutterstock.com

Address: Jakubská 120/4, Brno

Opening hours: Mon-Tue & Sat 10am-12am. Fri 10am-1am. Sun 11am-11pm

Phone: +420 542 210 104

Internet: [brnorestaurencepivnice.hotelpegas.com/en](http://brnorestaurencepivnice.hotelpegas.com/en)

Email: [reception@hotelpegas.cz](mailto:reception@hotelpegas.cz)

### Pivovarská Starobrnno



This spacious venue has 210 seats reserved for the restaurant and 120 for the pub, while the lovely summer garden can accommodate 300 guests.

Pivovarská Starobrnno is extremely professional especially when it comes to beer: they have their own brewery, where a knowledgeable sommelier is always ready to introduce visitors to the "basics of beer".

Photo: Quinn Dombrowski/cc by-sa 2.0/Flickr(image cropped)

Address: Mendlovo náměstí 20, Brno

Opening hours: Mon-Sat 10am-12am. Sun 10am-11pm

Phone: +420 543 420 130

Internet: [www.pivovarska-starobrnno.cz](http://www.pivovarska-starobrnno.cz)

### Charlie's Hat



Unpretentious pub-disco where a friendly ambience prevails, featuring a courtyard, a spacious cellar and occasionally DJ-sets

where lots of international and local students gather to party wildly. Having said that, this spot is also a good fit for the more mature guests who prefer to grab a drink and chat as in every other pub.

Photo: Pressmaster/Shutterstock.com

Address: Koblížná 12, Brno

Opening hours: Mon-Thu 8pm-5am. Fri-Sat 8pm-6am

Phone: +420 601 328 317

Internet: [www.charlies-hat.cz](http://www.charlies-hat.cz)

Email: [info@charlies-hat.cz](mailto:info@charlies-hat.cz)

### Fléda club



This is considered to be one of the best clubs in Brno: it has a huge stage for live music, wild weekly parties and good cocktails offered at

reasonable prices. Fléda is located just on the ground floor of a hostel and it caters specifically young guests who love electro music.

Photo: melis / Shutterstock.com

Address: Štefánikova 24, Brno

Phone: +420 533 433 559

Internet: [www.fleda.cz](http://www.fleda.cz)

Email: [info@fleda.cz](mailto:info@fleda.cz)

### Šelepka – Šelepova No. 1



This well known, elegant restaurant features a club which is now one of the most visited venues when it comes to traditional jazz or blues concerts.

Moreover, the setting is idyllic and the beers and wines are excellent; so surf the website, check the upcoming events and have fun.

Photo: Lasse Ansaharju/Shutterstock.com

Address: Šelepova 1, Brno

Opening hours: Check the program on their website

Phone: +420 541 213 342

Internet: [www.chcujidlo.cz](http://www.chcujidlo.cz)

Email: [selepka@selepka.cz](mailto:selepka@selepka.cz)

### Zelená kočka



A pub, restaurant and nightclub offering lots of perfectly brewed beers and great music to dance the night away. Zelená kočka is especially

appreciated for the welcoming atmosphere, since the professional staff knows how to make every guest feel at ease.

Photo: Elevate/Pexels

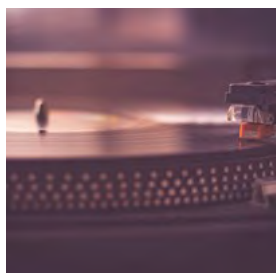
Address: Dvořákova 3, Brno

Opening hours: Mon-Tue 4pm-12am. Wed-Sat 4pm-1am. Sun 5pm-11pm

Phone: +420 775 566 602

Internet: [www.beerboss.cz](http://www.beerboss.cz)

### Kabinet Múz



This sophisticated, alternative cultural space provides pub food and drinks, and has a varied program of indie concerts. They also sell

vinyl records.

Photo: Pixabay.com / Pexels.com

Address: Sukova 49/4, Brno

Opening hours: Daily 4pm-12am. Kitchen closes at 10pm

Internet: [www.kabinetmuz.cz](http://www.kabinetmuz.cz)

Email: [info@kabinetmuz.cz](mailto:info@kabinetmuz.cz)

## SHOPPING



*imtmphoto / Shutterstock.com*

Brno has a great variety of shopping opportunities - from little boutiques and speciality shops to large shopping malls containing everything you may ever need. Several large malls are situated right in the centre of town, so take a walk and enjoy both shopping and cultural attractions.

### Velký Špalíček



The Velký Špalíček complex at Mečová 2 hosts countless stores in different sectors such as gastronomy, fashion, jewellery, perfumery and much more. This shopping mall also offers several restaurants, bars and a multiplex cinema.

Photo: cocoparisienne / Pixabay.com

Address: Velký Špalíček Mečová 2, Brno

Opening hours: Mon-Sat 9am-9pm. Sun 10am-8pm

Phone: +420 543 237 385

Internet: [www.velkyspalicek.cz](http://www.velkyspalicek.cz)

Email: [velkyspalicek@velkyspalicek.cz](mailto:velkyspalicek@velkyspalicek.cz)

### Galerie Vaňkovka



The shopping and cultural centre Galerie Vaňkovka is located between the railway and bus station, on the edge of the town centre, and it comprises 130 stores, restaurants and cafés. It's open seven days a week, so pay a visit whenever you want, whatever you need!

Photo: Bobex-73 / Shutterstock.com

Address: Ve Vaňkovce 1, Brno

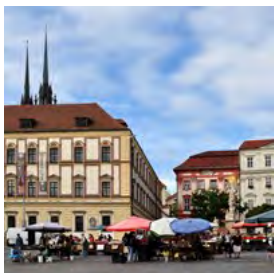
Opening hours: Mon-Sat 7am-10pm. Sun 10am-8pm

Phone: +420 533 110 111

Internet: [www.galerie-vankovka.cz](http://www.galerie-vankovka.cz)

Email: [info@galerie-vankovka.cz](mailto:info@galerie-vankovka.cz)

### The Cabbage Market (Zelný trh)



The Cabbage Market (farmers' market) is the perfect destination if you need fresh fruit and vegetables. Plus, it's a great opportunity to chat with some locals and immerse yourself in the culture of the place.

Photo: Millenium187/cc by-sa 3.0/Wikimedia(image cropped)

Address: Zelný trh, Brno

### Rebellion Store



For unique, fashionable pieces of clothing head to Rebellion, a well-reviewed boutique with a clear fashion concept in mind: the brand focuses on creativity and high quality materials, and each of its items is locally designed and produced. Combining innovation and timeless elegance, Rebellion a must-stop for those interested in

fashion.

Photo: Kai Pilger / Pexels.com

Address: Běhounská 3/5, Brno

Opening hours: Mon-Fri 10am-6:30pm. Sat 10am-3pm

Phone: +420 702 183 455

Internet: [www.rebellion.cz](http://www.rebellion.cz)

Email: [info@rebellion.cz](mailto:info@rebellion.cz)

### Bohemia Crystal



The Czech Republic is renowned for bohemian crystal, and this small but well-stocked shop is the place to get some genuine, reasonably priced pieces. They also sell traditionally decorated Czech porcelain, which makes for good souvenirs as well.

Photo: D. Bond / Shutterstock.com

Address: Česká 28b, Brno

Opening hours: Mon-Fri 9am-6:30pm. Sat 9am-12:30pm

Phone: +420 545 566 706

Internet: [www.crystalporcelan.cz](http://www.crystalporcelan.cz)

Email: [info@crystalporcelan.cz](mailto:info@crystalporcelan.cz)

### Olomoucké tvarůžky Gourmet Shop



Find typically Czech food specialities to bring home - or to taste locally - at this gourmet shop in the centre of Brno. "Olomoucké tvarůžky" is the name of a must-try typical rustic cheese which has been produced in the region from the 15th century, and it's the main focus of the shop; however, you will find plenty of other local delicacies.

Photo: Stepanek Photography / Shutterstock.com

Address: Rašínova 4, Brno

Opening hours: Mon-Fri 8:30am-6:30pm. Sat 8:30am-1:30pm

Phone: +420 539 011 445

Internet: [www.tvaruzky.cz/?lang=en](http://www.tvaruzky.cz/?lang=en)  
Email: [awprodejna.brno@tvaruzky.cz](mailto:awprodejna.brno@tvaruzky.cz)

### Polagraph

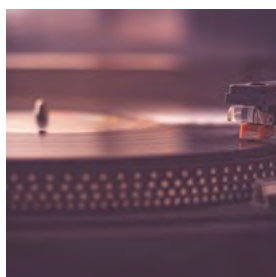


In Brno's atmospheric city centre and beautiful natural surroundings, you may feel the need to capture the magic with some proper

photographic equipment. In this case, head to Polagraph: the shop specialises in the famous Polaroid cameras, whose warm, vintage feeling has gained many fans worldwide. The place also constitutes a community hub for Polaroid enthusiasts, organising photography exhibitions, and can be a spot to make international, like-minded friends.

Photo: KC Slagle / Shutterstock.com  
Address: Pekařská 34, Brno  
Opening hours: Mon-Fri 8am-6:30pm  
Phone: +420 777 717 569  
Internet: [www.polagraph.cz](http://www.polagraph.cz)  
Email: [info@polagraph.cz](mailto:info@polagraph.cz)

### Kabinet



This sophisticated, alternative cultural space provides pub food and drinks, and has a varied program of indie concerts. They also sell

vinyl records.

Photo: Pixabay.com / Pexels.com  
Address: Sukova 49/4, Brno  
Opening hours: Daily 4pm-12am. Kitchen closes at 10pm  
Email: [info@kabinetmuz.cz](mailto:info@kabinetmuz.cz)

## TOURIST INFORMATION



*Kojin/Shutterstock.com*

### Passport / Visa



The Czech Republic can be visited visa-free for up to 90 days by citizens of most European countries, Australia, New Zealand, Japan, South Korea,

Taiwan, Malaysia, Israel, UAE and most countries in America. If you are unsure whether or not you need to apply for a visa, we recommend contacting the embassy or consulate in your country. International (non-Schengen) travelers need a passport that is valid for at least 3 months after the end of their intended trip in order to enter the Schengen zone. Citizens of Schengen countries can travel without a passport, but must have a valid ID with them during their stay.

Photo: TukTuk Design

### Best Time to Visit



Brno's beauty is probably at its peak during Spring, when the weather is dry and chilly, and there are not so many tourists around. In March you

might still find snow; the most pleasant months are probably May and June.

Summer (July-August) is the high season, and prices can be a bit higher; the temperature is not too hot (around 25 °C), but it can get humid.

Winter is the low season in Brno and some hotels close, but the city awakens again, briefly, in December: Christmas markets are worth seeing.

Photo: VectorA/Shutterstock.com

### Airport



Brno Airport is situated within the city limits, next to the D1 Brno-Olomouc motorway, so look for the exit called "Slatina" because the airport is just

2 km away from there.

Bus No. 76 from Brno's main railway station leaves every half an hour between 4:30am and 11pm, and will take you to the airport in just 20 minutes.

Taxi stands are right outside the airport arrivals terminal and the fare to the centre is approximately 300Kč.

Photo: Juan Garces

Address: Letiště Brno-Tuřany 904/1, Brno

Phone: +420 545 521 310

Internet: [www.brno-airport.cz/en](http://www.brno-airport.cz/en)

Email: [info@brno-airport.cz](mailto:info@brno-airport.cz)

### Public transport



Brno's excellent system of buses and trams makes it easy to navigate the city and the surrounding region. It is easy to travel by train to surrounding

cities of interest: Olomouc, Bratislava and Vienna, for example, make great day trips, as well as Pernštejn Castle and Telč with its gorgeous 16th-century square.

Transport Service of the City of Brno ([www.dpmb.cz](http://www.dpmb.cz)) provides information on tickets, routes and prices in Czech and English.

Integrated transport system of the South-Moravian region (IDS JMK):

tel: +420 543 174 317

[www.idsjmk.cz](http://www.idsjmk.cz)

Photo: Pierre-Luc Auclair

Phone: +420 543 174 317

Internet: [www.dpmb.cz/en](http://www.dpmb.cz/en)

### Taxi



Brno is well equipped when it comes to taxi. Here you find a selection of two major companies whose taxis are respectively yellow and

red and whose service is available by calling the numbers, or just by stopping a taxi on the street (you will find plenty of them everywhere, especially in the most touristic areas of the city).

City Taxi

Tel: +420 777 014 004

[www.citytaxibrno.cz](http://www.citytaxibrno.cz)

[operator@citytaxibrno.cz](mailto:operator@citytaxibrno.cz)

Lido Taxi Brno

Tel: +420 542 214 221

[www.taxi-brno.eu](http://www.taxi-brno.eu)

Photo: ArrivalGuides

## Post



The mailboxes in Brno are orange and you can buy the stamps at any counter with the sign "listovní". There's 24-hour post office next

to the central railway station (Nádražní 418/1, Brno).

Alternatively, find a post office at:

Photo: Andy Fuchs

Address: Příkop 843/4, Brno

Opening hours: Mon-Fri 8am-6pm

Phone: +420 954 260 400

Internet: [www.ceskaposta.cz/en](http://www.ceskaposta.cz/en)

## Pharmacy



Lékárna Koliště is a pharmacy located near the city centre, and it's open 24/7:

Photo: Gemma Garner

Address: Koliště 47, Brno

Opening hours: 24/7

Phone: +420 545 424 815

Internet: [www.lekarnakoliste.cz](http://www.lekarnakoliste.cz)

Email: [pharma@kei.cz](mailto:pharma@kei.cz)

## Telephone



Country code: +420 Area code: 54

Photo: Jardson Almeida

## Electricity

230 V / 50Hz



Photo: Stirling Tschan

## Population

377,440

## Currency

1 Czech crown or koruna (Kč or CZK) = 100 hellers or haléřů

## Opening hours

Shops and banks are open 9am-5pm on weekdays. Most banks are closed on Saturdays. Museums are open 10am-6pm and are usually closed on Mondays.

## Internet

[www.brno.cz](http://www.brno.cz)

## Newspapers

Právo

Brněnský deník

Lidové Noviny

## Emergency numbers

General emergency: 112

Fire service: 150

Ambulance: 155

Police: 158

Municipal police: 156

## Tourist information

Informační centrum

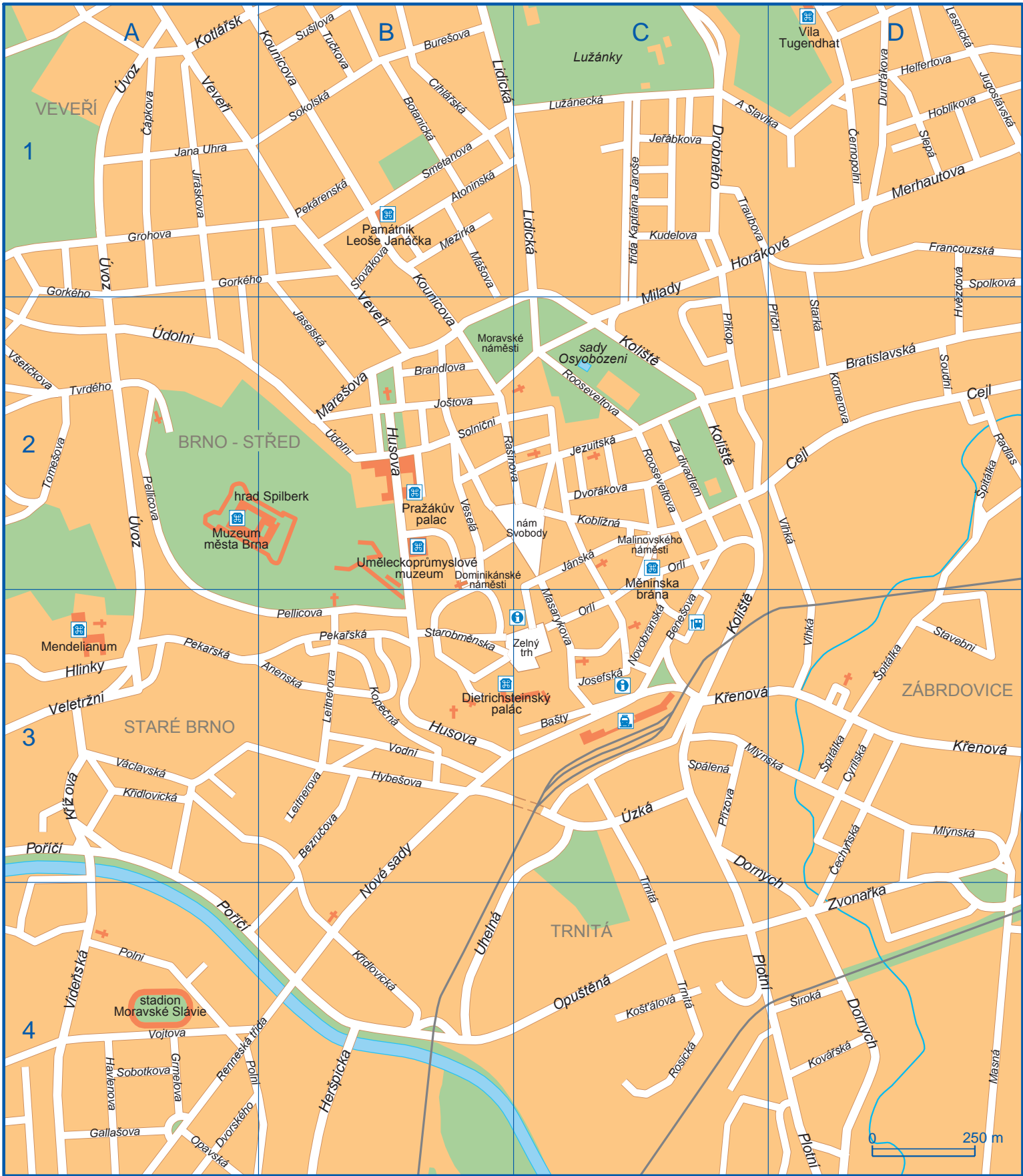
Radnická 8, Brno

+420 542 427 150

[www.ticbrno.cz](http://www.ticbrno.cz)

[info@ticbrno.cz](mailto:info@ticbrno.cz)

Open Mon-Fri 8:30am-6pm, Sat-Sun and holidays 9am-6pm



## Destination: Brno

Anenski	B3	Joštova	B2	Radlas	D2
Antonia Slavika	C1 D1	Jugoslivski	D1	Rašinova	B2
Atoninski	B1	Kobližni	C2	Renneski trida	A4 B4
Bašty	C3	Kolište	C2 C3	Rooseveltova	C2
Benešova	C3	Kopecni	B3	Rosicki	C4
Bezrucova	B3	Kotlirsk	A1	Slepi	D1
Botanicki	B1	Kounicova	B1 B2	Slovikova	B1
Brandlova	B2	Kovirski	D4	Smetanova	B1
Bratislavski	D2	Košť'ilovi	C4	Sobotkova	A4
Burešova	B1	Krenovi	C3 D3	Sokolski	B1
Cechynski	D3	Kridlovicki	A3 B4	Solnicni	B2
Cejl	D2	Křížovi	A3	Soudní	D2
Cernopolni	D1	Kudelova	C1	Spileni	C3
Cihlirski	B1	Körnerova	D2	Spolkovi	D1
Cipkova	A1	Leitnerova	B3	Starki	D2
Cyrilski	D3	Lesnicki	D1	Starobmenska	B3
Dominikinské nímesti	B2 C2	Lidicki	B1 C1	Stavebni	D3
Dornych	C3 D4	Lužinecki	C1	Sušilova	B1
Drobného	C1	Malinovského nímesti	C2	Tomešova	A2
Durd'íkova	D1	Marešova	B2	Traubova	C1
Dvorikova	C2	Masarykova	C2 C3	trida Kaptiina Jaroše	C1
Dvorského	A4	Masni	D4	Trniti	C3 C4
Francouzski	D1	Merhautova	D1	Tuckova	B1
Gallašova	A4	Mezirka	B1	Tvrdeho	A2
Gorkého	A1 A2 B1	Milady	C1 C2	Uhelni	B4
Grmelova	A4	Mišova	B1	Veletržni	A3
Grohova	A1	Mlýnski	C3 D3	Veseli	B2
Havlenova	A4	Moravské nímesti	B2 C2	Veveri	A1 B1 B2
Helfertova	D1	nímesti Svobody	C2	Viclavski	A3
Heršpicka	B4	Novobranski	C3	Videnski	A4
Hlinky	A3	Nové sady	B3 B4	Vihki	D2 D3
Hoblikova	D1	Opavski	A4	Vodní	B3
Horikové	C1 D1	Opušteni	C4	Vojtova	A4
Husova	B2 B3	Orlí	C2 C3	Všetickova	A2
Hvezdovi	D1 D2	Pekarski	A3 B3	Za divadlem	C2
Hybešova	B3	Pekirenski	B1	Zelný trh	C3
Jana Uhra	A1	Pellicova	A2 B3	Zvonarka	D4
Jaselski	B2	Plotní	C4 D4	Údolni	A2 B2
Jeribkova	C1	Polni	A4	Úvoz	A1 A2
Jezuitski	C2	Porící	A3 A4	Úzki	C3
Jinski	C2	Pricni	D2	Široki	D4
Jiriskova	A1	Prikop	C2	Špitilka	D2 D3
Josefski	C3	Prízova	C3		

Information is subject to change. Please contact your Lifestyle Consultant for the most up-to-date recommendations.