



Photo: Sean Pavone/Shutterstock.com

As the birthplace of America, Philadelphia has endured centuries of hardship, obstacles, and triumphs, and remains a top tourist destination in the U.S. Historical buildings, sculptures, and murals line streets that were once walked by the Founding Fathers. While the weather fluctuates between mild springs, hot summers, and chilly winters, the people of Philly can always be seen out and about in the City of Brotherly Love.



Noriely Fernandez/Pexels

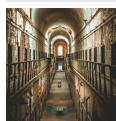


Salonagility.com Daniel/Unsplash



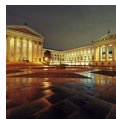
f11photo/Shutterstock.com

Featured



Eastern State Penitentiary

Once the most famous prison in the world, having housed criminals like Al Ca...



Philadelphia Museum of Art

As one of America's largest museums, the Philadelphia Museum of Art houses a...



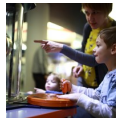
Please Touch Museum

If you're struggling to find a place to take your kids in Philly - look no f...



Kimmel Center for the Perf...

The Kimmel Center for the Performing Arts is Philadelphia's premier destinat...



The Franklin Institute

The Franklin Institute has been a hub for scientific and technological explo...

Top 5



Independence Hall

Freedom is woven into every brick of its architectural façade, and history r...



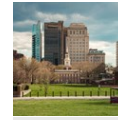
Elfreth's Alley

Dating back to 1703, Elfreth's Alley is often hailed as the oldest continuou...



Liberty Bell

Liberty has been a grand achievement for people throughout history, and the ...



Carpenters' Hall

Tucked in the heart of Independence National Historical Park, this Georgian-...



Betsy Ross House

The Betsy Ross House is an 18th-century home believed to have been the resid...

THE CITY



f11photo/Shutterstock.com

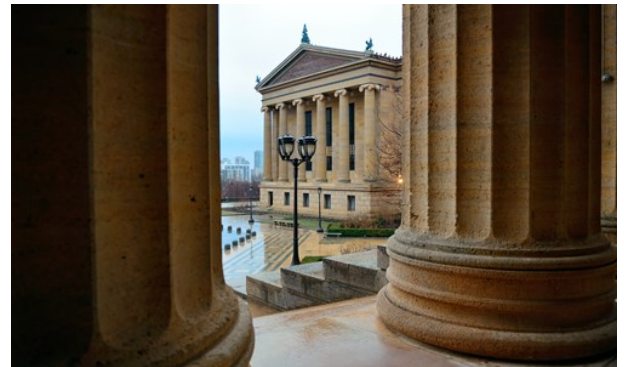
The beginning of American history passes through Philadelphia, Pennsylvania. If Washington D.C. embodies modern America, then Philadelphia represents the foundation upon which the nation was built—the burgeoning identity of a young nation was crafted in the halls of Philadelphia’s buildings and fought for in its streets.

With Philadelphia’s emergence as America’s first industrial city, it swiftly became a beacon of hope for an amalgam of cultures seeking reprieve from their respective situations. In the late 19th century, immigrants from Italy, Russia, and Eastern Europe arrived in droves, while Irish newcomers fled the Great Famine of the 1840s. The Great Migration further transformed the city as Southern Black Americans sought better opportunities and escape from racial oppression. The expansion of transportation networks in the city, including railroads and canals, did more than just connect distant places. They carried with them new cultures, skills, and traditions, thus, transforming Philadelphia into a thriving crossroads of diversity and history.

Today, Philadelphia is in a dynamic state of development, particularly in University City and Center City, its bustling business district. Transitioning from its industrial roots, the city

has blossomed into a vital center for education, healthcare, and technology. Philly, as it is commonly known, offers a wealth of historical significance while continuing to evolve as a substantial tourist destination.

DO & SEE



Songquan Deng/Shutterstock.com

As the birthplace of American independence, Philadelphia boasts a vast array of historic sites waiting to be explored. Stroll through cobblestone streets where revolutionaries once stood, then turn the corner to find colorful street art or a pop-up food market. Later, unwind by the waterfront, and once the sun sets, head to Rittenhouse Square for a memorable night out in the City of Brotherly Love.

Independence Hall



Freedom is woven into every brick of its architectural façade, and history resonates in every room and corridor. As the birthplace of American independence, Independence Hall witnessed the signing of both the Declaration of Independence and the U.S. Constitution. Generations of visitors have stepped back in time to explore the Assembly Room, the Courtroom of the Pennsylvania Supreme Court, the Long Gallery, the Governor’s Council Chamber, and the

Committee of the Assembly Chamber. Many historical figures, including Benjamin Franklin and Abraham Lincoln, have walked these halls, leaving behind a legacy that continues to inspire.

Photo: f11photo/Shutterstock.com

Address: Chestnut Street, between 5th & 6th Street, Philadelphia

Public Transport: SEPTA Subway: You can take the Market-Frankford Line (Blue Line) to the 5th Street/Independence Hall Station; SEPTA Bus: Routes 9, 21, 42, and 48 also serve the area around Independence Hall.

Opening hours: Daily 9am-5pm

Internet:

www.nps.gov/inde/planyourvisit/independencehall.htm

Elfreth's Alley



Dating back to 1703, Elfreth's Alley is often hailed as the oldest continuously inhabited residential street in the United States. Go back in time by walking down its narrow, cobblestone lane, where Federal and Georgian-style homes still stand proudly as relics of a bygone era.

At numbers 124 and 126, you'll find a small museum offering a glimpse into the daily lives of working-class Philadelphians during the colonial era.

Photo: Vini Brasil/Unsplash

Address: 126 Elfreth's Alley, Philadelphia

Public Transport: SEPTA Bus Routes: Take Bus Route 57 and get off at 2nd Street and Arch Street; or Take the Market-Frankford Line (Blue Line) to the 2nd Street Station, then walk north on 2nd Street until you reach Elfreth's Alley (around a 5-10 minute walk).

Opening hours: Fri-Sun noon-4pm, Mon-Thu closed

Phone: +1 267 457 4159

Internet: www.elfrethsalley.org

Email: info@elfrethsalley.org

Liberty Bell



Liberty has been a grand achievement for people throughout history, and the historic Liberty Bell serves as a testament to America's own piece of freedom.

Named by abolitionists during the struggle to end slavery, the Liberty Bell traveled the nation following the Civil War as a symbol of freedom and healing. Now, it stands proudly for all to partake in its message of equality and liberty.

Video presentations and exhibits display the Bell's history, and multilingual tapes are available, too.

Photo: f11photo/Shutterstock.com

Address: 526 Market Street, Philadelphia

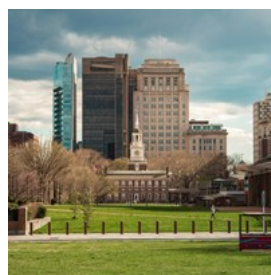
Opening hours: Daily 9am-5pm

Phone: +1 215 965 2305

Internet:

www.nps.gov/inde/learn/historyculture/stories-libertybell.htm

Carpenters' Hall



Tucked in the heart of Independence National Historical Park, this Georgian-style building, constructed in 1770, hosted the First

Continental Congress in 1774, a defining moment on the road to American independence. What makes Carpenters' Hall unique is its origins in craftsmanship—originally built as the meeting place for the Carpenters' Company of Philadelphia, the oldest trade guild in the U.S., which still owns and operates the building today.

Photo: Lavdrim Mustafi/Pexels

Address: 320 Chestnut Street, Philadelphia

Opening hours: Tue-Sun 10am-4pm, Mon closed

Phone: +1 215 925 0167

Internet: www.carpentershall.org

Email: carphall@carpentershall.com

Betsy Ross House



The Betsy Ross House is an 18th-century home believed to have been the residence of the renowned seamstress and flag-maker Betsy Ross.

Legend has it that she sewed the first American flag here. Visitors are invited to tour the house and partake in the interactive exhibits and programs and even meet a Betsy Ross impersonator who works in the upholstery shop and can answer questions about her fascinating life.

Photo: Luke Michael/Unsplash

Address: 239 Arch Street, Philadelphia

Public Transport: SEPTA Bus Routes 5, 17, 33, 48, and 57 have stops near the Betsy Ross House; Market-Frankford Line (MFL): Take the Market-Frankford Line (blue line) and get off at the 2nd Street Station. From there, it's about a 5-minute walk to the Betsy Ross House.

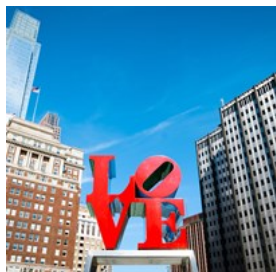
Opening hours: Daily 10am-5pm

Phone: +1 215 629 4026

Internet: <https://historicphiladelphia.org/betsy-ross-house>

Email: info@historicphiladelphia.org

JFK Plaza (Love Park)



As a beacon for the City of Brotherly Love, John F. Kennedy Plaza gives way to Love Park — an epicenter of food, art, music, and fun since its emergence in the 1960s. Robert Indiana's renowned "LOVE" sculpture overlooks JFK Plaza, drawing kisses from countless locals and visitors for decades. But perhaps best known as the forefront of world skateboarding venues, Love

Park made Philadelphia the only city to hold ESPN's "X Games" twice in a row.

Photo: Zack Frank/Shutterstock.com

Address: Arch Street, Philadelphia

Public Transport: SEPTA Regional Rail: Take any line to Suburban Station; SEPTA Bus: Several bus routes serve the area around Love Park, including routes 17, 33, 38, 44, and 48; SEPTA Market-Frankford Line (Blue Line): You can take this subway line to 15th Street Station, which is near Love Park.

Opening hours: Daily 7am-10pm

Phone: +1 215 686 1776

Day Trip to Amish Country



Step away from the rush of modern life and immerse yourself in a simpler, slower-paced way of life on this unique day trip from

Philadelphia.

As you journey through Lancaster County's rolling farmlands, you'll witness horse-drawn buggies share the road with cars, a tangible sign of the community's dedication to tradition. A visit to the Amish Village Museum provides deeper insights into the daily life and beliefs of the Amish—from their meticulous craftsmanship to their intentional rejection of modern conveniences.

You'll also have the chance to shop for handmade quilts, enjoy homemade pies, and perhaps even chat with a local farmer as they tend to their fields.

Photo: Demure Storyteller/Unsplash

Reading Terminal Market



At this historic Philadelphia indoor farmers' market, you can browse through a wide array of shops selling everything from fresh produce to artisanal cheeses, flowers, and handmade crafts. Be sure to indulge in lunch from one of the many diverse food stalls, featuring an eclectic mix of options like corn dogs, Middle Eastern specialties, Thai dishes, hearty burgers, and zesty Cajun cuisine.

Photo: Dan Mall/Unsplash

Address: 1136 Arch Street, Philadelphia

Public Transport: SEPTA Market-Frankford Line (Blue Line): The nearest station is 11th Street, just a short walk from the market; Buses: Several bus routes serve the area around Reading Terminal Market. Routes 4, 17, 23, 38, 44, and 62 will get you close.

Opening hours: Daily 8am-6pm

Phone: +1 215 922 2317

Internet: <https://readingterminalmarket.org>

Email: info@readingterminalmarket.org

Rittenhouse Square



Rittenhouse Square is a local favorite for relaxation amongst the reflecting pool, balustrade, classically designed urns, and ornamental lampposts. Grand oaks, maples, locusts, and other trees provide tranquil shade, while the flowerbeds are ablaze with color. Flower markets and art exhibits are held annually, and the nighttime brings many to the restaurants, bars, and clubs located along the square.

Photo: Ethan Hoover/Unsplash

Address: 1800 Walnut Street, Philadelphia

Public Transport: SEPTA Subway: Take the Market-Frankford

Line (MFL) to the 15th Street Station or the Broad Street Line (BSL) to the City Hall Station; SEPTA Trolley: If you're near a trolley line, you can use the Trolley lines 11, 13, 34, or 36. The closest trolley stop to Rittenhouse Square is at 19th and Walnut, just a few blocks away.

Eastern State Penitentiary



Once the most famous prison in the world, having housed criminals like Al Capone, Eastern State Penitentiary is now a hauntingly immersive museum. Visitors can explore its eerie, abandoned hallways and learn about its revolutionary design and chilling history through guided or self-guided audio tours. During Halloween, the penitentiary hosts the famous "Terror Behind the Walls" event, where visitors may experience interactive scares.

Photo: Lance Anderson/Unsplash

Address: 2027 Fairmount Avenue, Philadelphia

Public Transport: SEPTA bus routes 33, 48, or 43; SEPTA Subway: Take the Broad Street Line (Orange Line) and get off at the Fairmount Station.

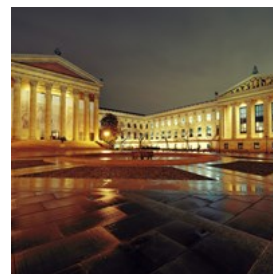
Opening hours: Wed-Mon 10am-5pm, Tue closed

Phone: +1 215 236 3300

Internet: www.easternstate.org

Email: info@easternstate.org

Philadelphia Museum of Art



As one of America's largest museums, the Philadelphia Museum of Art houses an impressive array of exhibitions, collections, programs, and entertainment. It boasts more than 227,000 pieces of art, and over 200 galleries feature paintings, decorative arts, sculptures, photography, textiles, paper works, and feats of architecture from around the world. Children

and family-oriented programs, fascinating lectures, films, and concerts are included.

Photo: Songquan Deng/Shutterstock.com

Address: 2600 Benjamin Franklin Parkway, Philadelphia

Public Transport: SEPTA bus route 38 drops you off right at the museum's front entrance

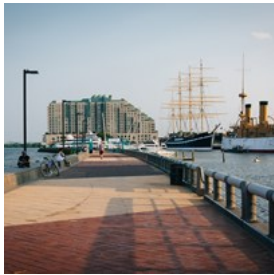
Opening hours: Mon, Thu, Sat & Sun 10am-5pm, Fri 10am-8:45pm, Tue & Wed closed

Phone: +1 215 763 8100

Internet: www.philamuseum.org

Email: visitorservices@philamuseum.org

Penn's Landing



Penn's Landing is a popular destination along the Delaware River Waterfront, offering a range of seasonal activities, including

kayaking, swan boats, and boat parades. It's also a hub for festivals and celebrations, such as those on National Marina Day. History enthusiasts can explore historic naval vessels, including the USS Olympia and USS Becuna, both preserved at the Independence Seaport Museum. Afterward, visitors can enjoy a meal at Moshulu, a restaurant aboard a historic four-masted ship that offers a unique dining experience on the waterfront.

Photo: Jon Bilous/Shutterstock.com

Address: Penn's Landing, Philadelphia

Public Transport: SEPTA's Route 25 bus serves the waterfront area or take the Market-Frankford Line (the Blue Line) and get off at the 2nd Street Station, which is a short walk from Penn's Landing.

Philadelphia Zoo



The Philadelphia Zoo holds the distinction of being America's first zoo, having opened its doors in 1874. It attracted over 228,000 visitors in its debut year and remains one of the city's prime attractions, now welcoming around 1.2 million visitors annually. Home to more than 1,300 rare and endangered animals, the zoo is renowned for its innovative exhibits, such as the Zoo360 animal exploration trails. Visitors can also enjoy unique experiences like swan boat rides, camel safaris, and even tethered balloon rides, providing panoramic views of the zoo.

Photo: Andywak/Shutterstock

Address: 3400 W Girard Avenue, Philadelphia

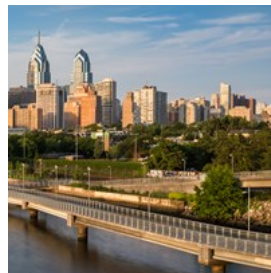
Opening hours: Wed-Sun 9:30am-5pm, Mon 9:30am-1pm, Tue closed

Phone: +1 215 243 1100

Internet: www.philadelphiazoo.org

Email: webkeeper@phillyzoo.org

Schuylkill River Trail



The Schuylkill River Trail is a lovely outdoor destination that allows you to enjoy nature without leaving the city. Perfect for biking, hiking, jogging, or a leisurely stroll along the riverbank, this scenic trail offers stunning views of the water and Philadelphia's skyline. Its well-maintained paths and green spaces make it a favorite among locals, especially during the summer months when you can see families and friends enjoying picnics and recreational activities.

Photo: SINITAR/Shutterstock.com

Address: Schuylkill River, Philadelphia

Internet: <https://schuylkillriver.org/schuylkill-river-trail>

Philadelphia's Magic Gardens



Philadelphia's Magic Gardens isn't your typical garden filled with greenery. Instead, it's a vibrant, immersive art environment created by local artist Isaiah Zagar, who began crafting this intricate mosaic masterpiece in 1994.

Spanning both indoor and outdoor spaces, this unique installation features a mesmerizing maze of tiles, bottles, mirrors, and other found objects, transforming the space into an expansive, whimsical world of mosaic art.

Photo: Chang Ye/Unsplash

Address: 1020 South Street, Philadelphia

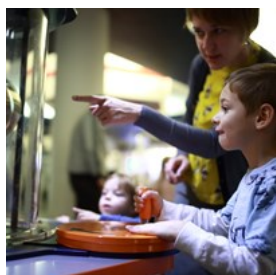
Public Transport: SEPTA Bus: Bus routes 47 or 64 have stops close to the Magic Gardens at South Street; SEPTA Broad Street Line (Orange Line): Take the subway to the Lombard-South Station, which is about a 10-minute walk to Philadelphia's Magic Gardens.

Opening hours: Wed-Mon 11am-6pm, Tue closed

Phone: +1 215 733 0390

Internet: www.phillymagicgardens.org

The Franklin Institute



The Franklin Institute has been a hub for scientific and technological exploration since its founding in 1824.

Honoring the inquisitive legacy of Benjamin Franklin, it has hosted legends like Nikola Tesla and Philo Taylor Farnsworth. The museum offers world-class exhibits, hands-on science experiences, and lectures that inspire visitors to explore and engage with the future of technology and innovation—a must-visit for curious minds of all

ages.

Photo: Chubykin Arkady/Shutterstock

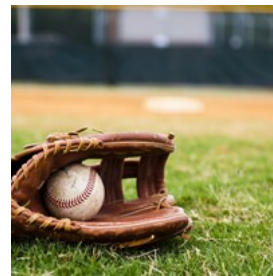
Address: 222 N 20th Street, Philadelphia

Opening hours: Daily 9:30am-5pm

Phone: +1 215 448 1200

Internet: www.fi.edu/en

Citizens Bank Park



Home of the Philadelphia Phillies, Citizens Bank Park is a 21-acre state-of-the-art baseball stadium. Just outside the outfield, Ashburn Alley is

a lively concourse where fans can immerse themselves in Phillies history, enjoy batting practice views, and explore exhibits like the Phillies All-Star Walk and Wall of Fame. The stadium's food scene has earned accolades, with the Food Network naming it among the "Best Ballpark Eats," offering iconic Philadelphia fare such as cheesesteaks and crab fries.

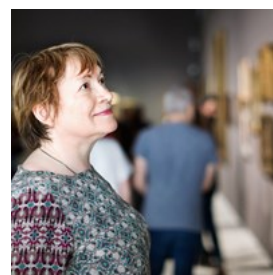
Photo: Danny E Hooks/Shutterstock

Address: 1 Citizens Bank Way, Philadelphia

Phone: +1 215 463 1000

Internet: www.mlb.com/phillies/ballpark

Barnes Foundation



Founded in 1922, The Barnes Foundation is a must-visit for art lovers, housing one of the world's finest collections of impressionist,

post-impressionist, and early modern art. The collection includes masterpieces by renowned artists like Renoir, Cézanne, Matisse, Picasso, and Van Gogh, along with remarkable African, Native American, and Pennsylvania German art.

Beyond paintings, the Barnes also features

decorative arts, metalwork, and furniture. Visitors can also explore the Foundation's 12-acre arboretum, home to an impressive variety of rare plants.

Photo: BearFotos/Shutterstock

Address: 2025 Benjamin Franklin Parkway, Philadelphia
Public Transport: SEPTA Bus: Routes 7, 32, 38, or 48; SEPTA Regional Rail: You can also take any Regional Rail line to Suburban Station, and from there, it's about a 10-15 minute walk to The Barnes Foundation.

Opening hours: Thu-Mon 11am-5pm, Tue & Wed closed

Phone: +1 215 278 7000

Internet: www.barnesfoundation.org

Email: info@barnesfoundation.org

Morris Arboretum & Gardens of the University of Pennsylvania



Spanning 92 acres, the Morris Arboretum & Gardens is a living museum dedicated to promoting education and community engagement through horticulture. With over 12,000 labeled trees, plants, and flowers, it offers an immersive botanical experience.

Visitors can enjoy guided tours during the spring and fall, deepening their appreciation for the diverse plant life. One of the highlights is the Tree Adventure exhibit and its canopy walk, which provides a unique and exciting perspective of the surrounding flora, fostering a deeper connection to the natural world.

Photo: Jonas Denil/Unsplash

Address: 100 E Northwestern Avenue, Philadelphia
Opening hours: Mon-Fri 10am-5pm, Sat & Sun 9am-5pm
Phone: +1 215 247 5777

Internet: www.morrisarboretum.org

Email: info@morrisarboretum.org

Weitzman National Museum of American Jewish History



The Weitzman National Museum of American Jewish History is the only museum in the U.S. dedicated exclusively to exploring and

interpreting the American Jewish experience.

The museum aims to foster a deeper connection of Jews to their heritage and inspire an appreciation for the diversity of this experience and the ideals of American freedom among people of all backgrounds.

Visitors can enjoy a wealth of exhibits, including over 1,200 artifacts and documents from the museum's collection, 2,500 images, 30 original films, and 13 interactive media displays. Some of the notable artifacts on display include Einstein's pipe, Irving Berlin's piano, and Steven Spielberg's first camera.

Photo: Africa Studio/Shutterstock

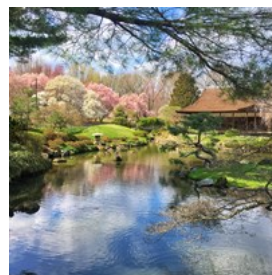
Address: 101 S Independence Mall East, Philadelphia
Public Transport: Take the SEPTA Market-Frankford Line (Blue Line) and get off at the 5th Street/Independence Hall Station; SEPTA bus routes 17, 33, and 48 stop nearby.

Opening hours: Fri-Mon 10am-5pm, Tue-Thu closed

Phone: +1 215 923 3811

Internet: <https://theweitzman.org>

Shofuso Japanese Cultural Center



Originally a gift from Japan to the United States, the garden house was constructed as an effort to foster relationships between the

nations after World War II. Initially built in New York, it was later moved to West Fairmount Park, where it now serves as the centerpiece of a serene Japanese garden. Visitors can immerse

themselves in the tranquil atmosphere while exploring the intricacies of the architecture and the lush landscape.

Photo: Zachary Chung Pun/Shutterstock.com
Address: Lansdowne Drive & Horticultural Drive, Philadelphia
Opening hours: Tue-Sun 11am-5pm, Mon closed
Phone: +1 215 878 5097
Internet: <https://japanphilly.org/shofuso>
Email: info@japanphilly.org

Please Touch Museum



If you're struggling to find a place to take your kids in Philly - look no further than the Please Touch Museum. This place lives up to the promises of its inviting name and offers plenty of interactive exhibits for kids, but grown-ups are also welcome to join in.

Photo: Irina Wilhauk/Shutterstock
Address: 4231 Avenue of the Republic, Philadelphia
Public Transport: SEPTA bus routes 38 or 40
Opening hours: Wed 9am-7pm, Thu-Mon 9am-4:30pm, Tue closed
Phone: +1 215 581 3181
Internet: www.pleasetouchmuseum.org
Email: info@pleasetouchmuseum.org

Arden Theatre Company



The acclaimed Arden Theatre Company is a cornerstone of Philadelphia's vibrant performing arts scene, offering a diverse array of productions, from classic plays to contemporary dramas, musicals, and children's theater. Known for its commitment to nurturing local talent, the Arden is more than just a theater—it's a cultural hub where artists and audiences alike connect

through the power of storytelling.

Photo: Kyle Head/Unsplash
Address: 40 N 2nd Street, Philadelphia
Public Transport: SEPTA bus routes 17, 33, 48, or 57; SEPTA Market-Frankford Line (Blue Line) to the 2nd Street Station, which is just a short walk from the theater.
Phone: +1 215 922 1122
Internet: <https://ardentheatre.org>
Email: boxofficer@ardentheatre.org

Kimmel Center for the Performing Arts



The Kimmel Center for the Performing Arts is Philadelphia's premier destination for world-class entertainment, from jazz and classical music to cutting-edge Broadway shows.

Photo: aerogondo2/Shutterstock.com
Address: 300 S Broad Street, Philadelphia
Public Transport: SEPTA Broad Street Line: Take the Broad Street Line (Orange Line) to Walnut-Locust Station; SEPTA bus routes 4 and 27; Regional Rail: If you're coming from outside Center City, you can take any Regional Rail line to Suburban Station, and walk about 10-15 minutes to the Kimmel Center.
Phone: +1 215 790 5800
Internet: www.ensembleartsp Philly.org

DINING



Rawpixel.com/Shutterstock.com

Both traditional and BYOB restaurants line the streets of Philadelphia, giving way to the city's eclectic dining options. A melting pot of cultures means that Philadelphia is perfect for finding even the smallest of venues. Intimate riverfront views and spacious neighborhood grills are just two of the city's dining themes.

Tommy DiNic's



If you're a foodie visiting Philadelphia, you simply cannot miss Tommy DiNic's. This popular sandwich shop, located at the Reading Terminal

Market, has gained a loyal following of devoted customers who pack the shop on a daily basis. And it's no wonder why. DiNic's is home to the award-winning roast pork sandwich, named "The Best Sandwich in America" by Adam Richman from the Travel Channel back in 2012. But the roast pork sandwich is just one of the many delicious offerings at DiNic's—from roast beef to homemade meatballs to Italian pulled pork, everything is made fresh daily and with the utmost care.

Photo: VGstockstudio/Shutterstock.com
Address: 51 N 12th Street, Philadelphia
Opening hours: Mon-Sat 9am-5pm, Sun closed
Phone: +1 215 923 6175

Internet: www.tommydinics.com

Geno's Steaks

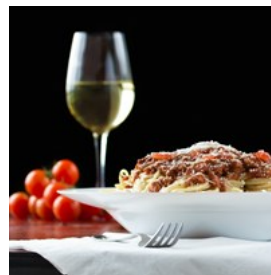


Geno's Steaks is a down-to-earth institution in Philadelphia, famous for its mouthwatering cheesesteaks, which keep patrons lining up 24/7, eager to savor a true taste of the city's culinary heritage.

Founded in 1966 by Joey Vento with just \$6 to his name, the restaurant quickly gained popularity, defying predictions of its demise. Today, under the guidance of Joey's son, Geno, the legacy continues with a commitment to quality and flavor, making it a must-visit for anyone craving the best cheesesteak in the city.

Photo: David Henry/Pexels
Address: 1219 S 9th Street, Philadelphia
Opening hours: Open 24/7
Phone: +1 215 389 0659
Internet: www.genosteaks.com

Chart House



Located along the banks of the Delaware River, Chart House is an upscale chain eatery renowned for its fresh seafood delights, including lobster bisque, shrimp tacos, and miso-glazed salmon, along with a selection of steakhouse-style dishes served in a chic setting with waterfront vistas.

Photo: [images.etc/Shutterstock.com](https://www.gettyimages.com)
Address: 555 S Christopher Columbus Boulevard, Philadelphia
Opening hours: Mon-Thu 4:30pm-9:30pm, Fri & Sat 4:30pm-10pm, Sun 11am-9pm
Phone: +1 215 625 8383

Internet:

www.chart-house.com/location/chart-house-philadelphia-pa/

Victor Café



Only in Philadelphia can your servers also be opera singers! Victor Café, often dubbed the “music lover’s rendezvous,” offers a one-of-a-kind dining experience where the waitstaff performs classical ballads and arias while you savor a menu of classic Italian dishes.

Photo: Eight Photo/Shutterstock.com

Address: 1303 Dickinson Street, Philadelphia

Opening hours: Mon–Thu 5pm–9:30pm, Fri 5pm–11pm, Sat 4:3pm–11pm, Sun 4pm–9:30pm

Phone: +1 215 468 3040

Internet: <https://victorcafe.com>

Email: victorcafe@victorcafe.com

Morimoto



At the helm of Morimoto is Chef Masaharu Morimoto, renowned for his innovative approach to Japanese cuisine, which garnered him fame on the television show Iron Chef. This restaurant offers an exquisite dining experience where guests are treated to a harmonious blend of traditional flavors and modern presentation. The multi-course tasting menu is a culinary adventure, showcasing the chef’s signature dishes and allowing diners to explore the full spectrum of his creative artistry.

The restaurant's interior is a visual feast in itself, reflecting a sleek, futuristic neo-Japanese aesthetic that captures the imagination. Designed by the celebrated designer Karim Rashid, Morimoto's space features unique design

elements in each room, creating an atmosphere that is both elegant and inviting.

Photo: Kzenon/Shutterstock.com

Address: 723 Chestnut Street, Philadelphia

Opening hours: Sun–Thu 5pm–10pm, Fri & Sat 5pm–11pm

Phone: +1 215 413 9070

Internet: <https://morimotorestaurant.com>

Lacroix Restaurant at The Rittenhouse



Located in the heart of Philadelphia's Center City, in the elegant Rittenhouse Hotel, Lacroix offers an upscale dining experience that is truly unmatched. Indulge in its award-winning cuisine featuring a global menu prepared with fresh seasonal ingredients and fine wines, plus a chef's table, and a tasting menu with kitchen seating.

Photo: Monkey Business Images/Shutterstock.com

Address: 210 W Rittenhouse Square, Philadelphia

Phone: +1 215 790 2533

Internet: www.lacroixrestaurant.com

Talula's Garden



Set in a chic farmhouse setting, Talula's Garden serves seasonal American cuisine infused with a European touch. The menu is thoughtfully crafted with locally sourced ingredients that reflect the changing seasons, ensuring each dish is fresh, flavorful, and memorable. Their summer garden provides a perfect outdoor setting to relax and enjoy your meal amidst the beauty of nature.

Photo: Stepanek Photography/Shutterstock.com

Address: 210 West Washington Square, Philadelphia

Opening hours: Mon-Fri 5pm-10pm, Sat 4pm-10pm, Sun 10am-2pm / 4pm-10pm

Phone: +1 215 592 7787

Internet: www.talulasgarden.com

Email: talulas.info@starr-restaurants.com

Amada



Bowing to the 800-year-old tradition of Spanish tapas, Amada respects the abundance of flavors and ingredients required to create authentic tapas. Chef and founder José Garces infuses his passion for Mediterranean and Atlantic flavors into every dish. The décor and design of Amada transport guests back to 13th-century Spain, when the Castilian King, Alfonso The Wise, began the tradition of Spanish tapas.

Photo: ARTRAN/Shutterstock.com

Address: 217-219 Chestnut Street, Philadelphia

Opening hours: Mon-Fri 5pm-10pm, Sat & Sun 11:30am-10pm

Phone: +1 215 625 2450

Internet: www.amadarestaurant.com/amada-philadelphia

Email: amada.reservations@garcesgroup.com

El Vez



El Vez's flashy, frenetic Latin decor featuring high-backed velvet Hollywood booths and a low-rider bike elevated above the dining room sets the stage for an unforgettable dining experience. This trendy eatery offers Mexican classics like tacos, nachos, and quesadillas. One standout is the Taco Tasting Platter, allowing you to indulge in a delightful variety of flavors. Don't miss their signature Frozen Blood Orange Margarita, a refreshing twist that pairs perfectly

with your meal.

Photo: [stockcreations/Shutterstock.com](https://www.shutterstock.com)

Address: 121 S 13th Street, Philadelphia

Opening hours: Mon-Thu 11:30am-10pm Fri 11:30am-11pm, Sat 11am-11pm, Sun 11am-10pm

Phone: +1 215 928 9800

Internet: <https://elvezrestaurant.com>

Pizzeria Beddia



Once a humble spot known for its pies, Pizzeria Beddia has blossomed into a bustling dine-in pizzeria boasting 120 seats and a unique

Hoagie Room. Beddia offers an Omakase-style experience, where guests surrender their dining choices to the chef, showcasing the culinary creativity behind each dish. The menu remains focused on their acclaimed pizza, but it also features a carefully curated selection of wines, cocktails, and Amari—Italian herbal liquors perfect for sipping after your meal.

Photo: ADfoto/Shutterstock.com

Address: 1313 N Lee Street, Philadelphia

Opening hours: Mon-Thu 5pm-9:30pm, Fri & Sat noon-10:30pm, Sun noon-9pm

Phone: +1 267 928 2256

Internet: www.pizzeriabeddia.com

Buddakan



Buddakan is Philadelphia's premier venue for Modern Asian cuisine and transcendent ambiances. A massive golden statue of Buddha

overlooks the main dining room as patrons feast on spicy rock shrimp bao buns or tea-smoked spare ribs.

Photo: [garetsworkshop/Shutterstock.com](https://www.shutterstock.com)

Address: 325 Chestnut Street, Philadelphia
Opening hours: Mon-Thu 5pm-10pm, Fri & Sat 5pm-11pm,
Sun 4pm-10pm
Phone: +1 215 574 9440
Internet: <https://buddakan.com>
Email: buddakan.info@starr-restaurants.com

The Capital Grille



While The Capital Grille has several locations across the country, the Philadelphia outpost stands out as a true exemplar of downtown fine dining. Located just a stone's throw from City Hall, this restaurant captures the regal essence of Philadelphia in every way. The meat is dry-aged to perfection and the delectable seafood dishes leave guests wanting more, all perfectly complemented by the restaurant's award-winning wine list.

Photo: Kris Wiktor/Shutterstock.com
Address: 1338-46 Chestnut Street, Philadelphia
Opening hours: Mon-Thu 11:30am-9pm, Fri 11:30am-10pm,
Sat noon-10pm, Sun noon-9pm
Phone: +1 215 545 9588
Internet: www.instagram.com/thecapitalgrille
Email: philadelphia@tcgdine.com

Zahav



Zahav, the brainchild of James Beard Award-winning chef Michael Solomonov, invites diners on a flavorful journey through Israeli, Mediterranean, and Middle Eastern cuisines. Known for its open-coal cooking technique, the restaurant emphasizes bold flavors and fresh ingredients, making each dish a standout. The extensive drink menu features an impressive selection of wines from around the

globe, perfectly complementing the vibrant fare.

Photo: [szefer/Shutterstock.com](https://www.shutterstock.com/user/szefer)
Address: 237 Street James Place, Philadelphia
Opening hours: Tue-Sat 5pm-9:30pm, Sun & Mon closed
Phone: +1 215 625 8800
Internet: www.instagram.com/zahavrestaurant

Saad's Halal Restaurant



Saad's Halal is an all-Halal Middle Eastern restaurant offering a variety of fresh dishes such as falafel, shawarma, and baklava for both dine-in and take-out options. Additionally, vegetarian options like Baba Ghanouj and Tabouly are also available on their menu.

Photo: Martin Rettenberger/Shutterstock.com
Address: 4500 Walnut Street, Philadelphia
Opening hours: Mon-Thu 11am-8:45pm, Fri & Sat
11am-9:45pm, Sun closed
Phone: +1 215 222 7223
Internet: www.saadhalal.com

Kanella



Kanella is a down-to-earth BYOB eatery serving authentic cuisine from Cyprus and Greece, including an array of kebab dishes, Gyro, and Greek salad.

Photo: [diamant24/Shutterstock.com](https://www.shutterstock.com/user/diamant24)
Address: 1001 Spruce Street, Philadelphia
Opening hours: Tue-Sun 11am-10pm, Mon closed
Phone: +1 267 928 2085
Internet: www.kanellarestaurant.com
Email: info@kanellarestaurant.com

CAFÉS



Linda Hughes/Shutterstock.com

When in Philadelphia, don't miss out on classic Philly sandwiches, such as the cheesesteak or the roast pork sandwich (as long as you're not vegetarian or vegan); they're often paired with a fresh cup of coffee from one of the city's many independent cafés. Neighborhood spots like La Colombe and Brewerytown Beats offer not just great coffee but also a lively atmosphere where locals gather.

Down Home Diner



Located within Reading Terminal Market, Down Home Diner transports you straight to the nostalgia of a classic 50's diner, complete with

kitschy retro decor, vinyl booths and counter seatings, and of course, the irresistible aroma of Southern-inspired homestyle cooking wafting through the air.

Most items on the menu are made from scratch—from their biscuits and cornbread, which are baked in-house daily, to their jams and soups. The Blueberry Pancakes and the Scram Bowl—a delicious mix of sausage, peppers, onions, cheddar, and home fries—come highly recommended.

Photo: nikldn/Unsplash

Address: 51 N 12th Street, Philadelphia

Opening hours: Mon-Fri 7am-6pm, Sat & Sun 8am-6pm

Phone: +1 215 627 1955

Internet: www.downhomediner.net

Sabrina's Cafe



Sabrina's Cafe is a go-to spot for breakfast and brunch lovers in Philadelphia. The menu is impressively diverse, featuring an array of New and Traditional American, vegan, and vegetarian dishes, as well as Greek and Mediterranean, Mexican, and soul food options. The restaurant also offers daily specials during brunch and dinner, which keep customers coming back for more.

Photo: Alex Couto/Shutterstock.com

Address: 227 North 34th Street, Philadelphia

Opening hours: Daily 8am-3pm

Phone: +1 215 222 1022

Internet: www.instagram.com/sabrinascfe

White Dog Café



White Dog Café is well-known for its commitment to sustainability and use of organic, locally sourced ingredients, which makes it one of Philadelphia's pioneering restaurants in the farm-to-table movement. Founded in 1983, the café's reputation goes beyond just its seasonal American contemporary cuisine, as it places a significant emphasis on ethical sourcing, supporting local farmers, and promoting environmental responsibility. The dog-themed décor adds a quirky charm to the dining experience, with each room uniquely decorated to reflect the canine inspiration.

Photo: VikaGeyder/Shutterstock.com

Address: 3420 Sansom Street, Philadelphia

Opening hours: Mon-Fri 11am-9pm, Sat 9am-9:30pm, Sun 9am-8pm

Phone: +1 215 386 9224

Internet: <https://whitedog.com/universitycity>

Email: universitycity@whitedog.com

Isgro Pastries



Isgro Pastries has been operating in Philadelphia since 1904, gracing locals and visitors with their acclaimed cannoli and confections. So many find themselves coming for a cannoli but leaving with a collection of cookies, tarts, and other delicious Italian pastries.

Photo: Shebeko/Shutterstock.com

Address: 1009 Christian Street, Philadelphia

Opening hours: Tue 8am-4pm, Wed-Sat 8am-6pm, Sun 8am-4pm, Mon closed

Phone: +1 215 923 3092

Internet: www.isgropastries.com

Email: info@bestcannoli.com

The Couch Tomato Café



Intimate, wooded seating and delicious cuisine make The Couch Tomato the quintessential café experience. The pizza is gourmet and award-winning, often served alongside drinks from the craft beer and wine list.

Photo: puhhha/Shutterstock.com

Address: 102 Rector Street, Philadelphia

Opening hours: Daily 11am-9pm

Phone: +1 215 483 2233

Internet: www.instagram.com/couchtomatocafe

Di Bruno Bros



Di Bruno Bros. is a longstanding European-style marketplace offering cheeses from around the world, delectable cured meats, a variety of sweet and savory spreads, tasty-looking freshly prepared foods, and Italian pastries, plus a wine and coffee bar.

Photo: Mordasova Elena/Shutterstock

Address: 1730 Chestnut Street, Philadelphia

Opening hours: Mon-Sat 7am-8pm, Sun 7am-7pm

Phone: +1 215 665 9220

Internet: <https://dibruno.com>

BARS & NIGHTLIFE



ChameleonsEye/Shutterstock

Philadelphia's nightlife is as diverse and eclectic as the city itself. The City of Brotherly Love stays buzzing well into the night, with most bars open until 2am and some after-hours spots stretching even later.

While Philly is not known for massive mega-clubs, it thrives on intimate, character-filled venues. Music lounges, underground dance floors, sports bars, and cozy pubs define the scene. For live music and DJ sets, your best bets are Fishtown and South Philly.

Bob and Barbara's Lounge



Bob and Barbara's Lounge is a Philly bar classic that never goes out of style. It is famous for its signature cheap beer-and-a-shot special along with live jazz music. Locals and visitors alike come here for "The Special" — a shot of Jim Bean and a Pabst Blue Ribbon beer. So why not join in on the fun and experience this beloved Philly institution for yourself?

Photo: Neyron Photo/Shutterstock.com

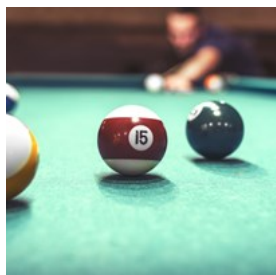
Address: 1509 South Street, Philadelphia

Opening hours: Daily 4pm-2am

Phone: +1 215 545 4511

Internet: www.bobandbarbaras.com

Tattooed Mom



Tattooed Mom is a Philly institution that combines a laid-back vibe with a visually striking, graffiti-filled interior. Located on South Street, this quirky bar is a haven for hipsters, artists, and anyone seeking a relaxed, eclectic atmosphere. From the pool table to the vintage jukebox, there's plenty to keep you entertained, but it's the creative decor and casual community vibe that truly make this spot stand out.

Plus, no visit is complete without sampling their signature comfort food—crispy waffle fries and tater tots are must-try staples that perfectly complement a fun night out, whether you're just starting or winding down your evening.

Photo: Denis Rozhnovsky/Shutterstock.com

Address: 530 South Street, Philadelphia

Opening hours: Mon-Thu 4pm-11pm, Fri & Sat noon-2am, Sun noon-11pm

Phone: +1 215 238 9880

Internet: www.tattooedmomphilly.com

Email: tattooedmomphilly@gmail.com

Cuba Libre Restaurant & Rum Bar



With its vibrant Caribbean decor, this lively venue will transport you to Havana's golden era right in the heart of Philly. Latin dance music fills the air, DJs set the mood, and live salsa performances take the stage. Of course, you can't visit Cuba Libre without trying their rum-based cocktails and culinary Cuban delights, such as Ropa Vieja and Vaca Frita.

Photo: Ivan Mateev/Shutterstock.com

Address: 10 S 2nd Street, Philadelphia

Opening hours: Mon-Thu 4pm-9pm, Fri 4pm-2am, Sat noon-2am, Sun noon-9pm

Phone: +1 215 627 0666

Internet:

www.cubalibrerestaurant.com/index.php?/en/philadelphia

The 700



The 700 is a beloved multilevel sports bar located in Northern Liberties, with a special charm that sets it apart from your typical sports bars. Soccer fans will especially feel at home here, as the atmosphere buzzes with excitement during match days, with passionate fans cheering on their favorite teams.

The bar occupies a building that was once the home of a poultry butcher, adding a quirky historical twist to its laid-back vibe. But it's not just for sports enthusiasts—upstairs, The 700 transforms into a lively space with DJs and lots of dancing, including a DJ booth in what was once

the old bathroom.

Photo: Nomad_Soul/Shutterstock

Address: 700 N 2nd Street, Philadelphia

Opening hours: Mon-Fri 3:30pm-2am, Sat & Sun 2pm-2am

Phone: +1 215 413 3181

Internet: www.instagram.com/the700_

Tria Cafe Wash West



Featuring two Philadelphia locations, Tria Cafe proudly serves one of mankind's most savory trios: wine, cheese, and beer. The products are a combination of global and local finds, and the fermentation menus evolve with the best ingredients.

Photo: Rustle/Shutterstock.com

Address: 1137 Spruce Street, Philadelphia

Opening hours: Mon-Thu 4pm-9:30pm, Fri 4pm-11pm, Sat 2pm-11pm, Sun 2pm-8:30pm

Phone: +1 215 629 9200

Internet: www.triaphilly.com

Email: info@triacafe.com

More Info: Further location on Rittenhouse Square

New Deck Tavern



The New Deck Tavern is an old-school Irish pub offering an impressive selection of draft beers from around the globe, along with a broad array of Irish whiskey and single-malt scotch. Due to its location near the University of Pennsylvania and Drexel University and its prices, it's a favorite among both students and locals. The pub's quiz nights are particularly popular, while the menu of classic pub grub, including hearty Irish-American dishes, complements its offerings.

Photo: Africa Studio/Shutterstock.com

Address: 3408 Sansom Street, Philadelphia

Opening hours: Tue-Wed 11am-midnight, Thu-Sat 11am-1am, Sun noon-11pm, Mon closed

Phone: +1 215 386 4600

Internet: www.newdecktavern.com

Silk City



Silk City is a diner, bar, and lounge boasting a charming outdoor beer garden, perfect for those who enjoy dining al fresco. The menu at Silk City is designed to cater to those who love classic American comfort food, with dishes like fried chicken and meatloaf being popular among visitors. In addition to its mouth-watering dishes, Silk City also offers an extensive selection of cocktails and beers.

Photo: oneinchpunch/Shutterstock.com

Address: 435 Spring Garden Street, Philadelphia

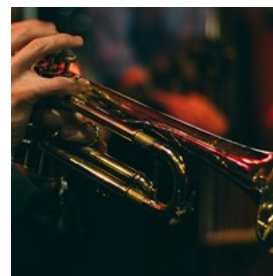
Opening hours: Mon-Thu 4pm-11pm, Fri 4pm-2am, Sat 10am-2am, Sun 10am-10pm

Phone: +1 215 592 8838

Internet: www.instagram.com/silkcitydiner

Email: silkcityphilly@gmail.com

Chris' Jazz Café



Chris' Jazz Café is a charming venue that brings the soulful sounds of live jazz to life, complemented by a menu of Southern-style cuisine and an assortment of drinks. Its intimate interior evokes the classic vibe of 1950s-era jazz bars, creating a cozy atmosphere where guests can relax and enjoy performances by talented musicians.

Photo: Chris Bair/Unsplash

Address: 1421 Sansom Street, Philadelphia

Opening hours: Tue-Thu 4pm-midnight, Fri 4pm-2am, Sat

6pm-2am, Sun & Mon closed
Phone: +1 215 568 3131
Internet: www.chrisjazzcafe.com
Email: chrisjazzcafe@comcast.net

Monk's Café



Monk's Café is more than just a bar; it's a revered Belgian beer emporium and restaurant in Philadelphia's Center City, known for its impressive selection of craft ales and global brews. Owned by renowned beer connoisseurs Tom Peters and Fergus Carey, this iconic spot offers guests a deep dive into the world of Belgian beer with its renowned "Beer Bible," a detailed guide to help patrons select the perfect brew from their extensive list, which includes both draft and bottled options.

Beyond its stellar beer selection, Monk's Café delights with Belgian-inspired cuisine, serving signature dishes like mussels, crispy fries, and other hearty offerings, all in a cozy, brewpub atmosphere.

Photo: Brent Hofacker/Shutterstock.com
Address: 264 S 16th Street, Philadelphia
Opening hours: Tue-Sun 11:30am-11:45pm, Mon closed
Phone: +1 215 545 7005
Internet: www.monkscafe.com

Barcade



Barcade is the ultimate destination for those who love classic arcade games and American craft beer—it's a bar! It's an arcade! It's Barcade! The venue features a wide range of vintage video games, including favorites like Pac-Man and Donkey Kong. If you're feeling peckish, Barcade

has you covered with a variety of delicious tacos, sandwiches, and other tasty bites.

Photo: Julian Lozano/Unsplash
Address: 1114 Frankford Avenue, Philadelphia
Opening hours: Mon-Thu 2pm-2am, Fri-Sun noon-2am
Phone: +1 215 634 4400
Internet: <https://barcade.com/fishtown>

Manayunk Brewing Company



For over two decades, Manayunk Brewing Company has been a lively destination renowned for its extensive selection of small-batch beers. With a rotating list of over 600 different varieties, visitors are sure to find a brew that suits their taste buds.

Nestled along the scenic Schuylkill River, the brewery features one of the largest outdoor decks in Philadelphia, making it an ideal spot for a relaxing drink or meal on a sunny day. The menu is just as impressive, offering a diverse range of dishes, including stone oven-fired pizza, classic fish & chips, and even sushi.

Photo: Valentyn Volkov/Shutterstock.com
Address: Pompanoosuc Mills, 4120 Main St, Philadelphia
Opening hours: Tue-Thu noon-10pm, Fri & Sat noon-midnight, Sun noon-10pm, Mon closed
Phone: +1 215 482 8220
Internet: www.instagram.com/manayunkbrewingco
Email: info@manayunkbrewery.com

Cavanaugh's Headhouse Square



A staple in the Philly sports bar scene, Cavanaugh's Headhouse is a two-story tavern offering a cozy and inviting atmosphere with

multiple rooms for patrons to enjoy along with TV screens showing the latest sports games.

The tavern is renowned for its pub grub, with its award-winning wings being a must-try item on the menu. These finger-licking wings are coated in Cav's signature sweet and tangy sauce, made with Irish whisky, which provides a unique flavor that keeps visitors coming back for more.

Photo: Khakimullin Aleksandr/Shutterstock.com

Address: 421 S 2nd Street, Philadelphia

Opening hours: Mon–Thu 4pm–2am, Fri–Sun noon–2am

Phone: +1 215 928 9307

Internet: www.cavsheadhouse.com

Email: info@cavsheadhouse.com

SHOPPING



gpoinstudio/Shutterstock.com

The bustling streets of Center City feature the upscale retail hub of Walnut Street, lined with luxury brands and trendy boutiques, while the historic and quaint cobblestone streets of Old City boast artisanal shops and galleries showcasing local craftsmanship.

For a taste of Philadelphia's distinctive character, head to the Reading Terminal Market, where you can indulge in local delicacies and find handcrafted items, including ceramics and pottery from local artisans at The Pennsylvania Dutch Market.

South Street



South Street is a loud, bustling, and eclectic strip in Philadelphia, where an array of groups and cultures come together to create an exciting atmosphere. The street is lined with a diverse range of unique stores and multi-ethnic restaurants that offer an authentic taste of Philadelphia's culinary scene. Among the many options, quite a few establishments are renowned for their famous Philly Cheese Steak, which is a must-try for anyone visiting the area. A trip to South Street is an opportunity to immerse oneself in the city's lively culture and to discover something new around every corner.

Photo: Dragon Images/Shutterstock.com

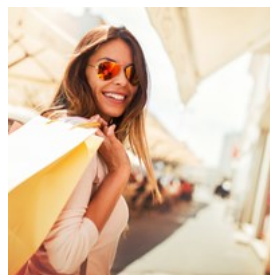
Address: South Street, Philadelphia

Internet: <https://southstreet.com>

Email: info@southstreet.com

More Info: Between Front and 10th streets

Old City District



The Old City District, known as the birthplace of American independence, offers not only excellent shopping but also a rich historical backdrop. This beloved neighborhood is best known for its major Colonial-era sites, including Independence Hall, where the Declaration of Independence was signed, and the iconic Liberty Bell. The Betsy Ross House, where the first American flag was sewn, is another must-see.

Amidst these historical treasures, Old City is now a vibrant shopping destination, home to over 100 boutiques offering everything from handcrafted jewelry to designer clothing, shoes,

and furniture.

Photo: Bobex-73/Shutterstock
Internet: www.oldcitydistrict.org
Email: info@oldcitydistrict.org

Reading Terminal Market



Located in the heart of Center City, Reading Terminal Market is a bustling and historic destination for food lovers and shoppers alike.

Established in 1893, this iconic indoor market is home to a wide variety of vendors offering everything from fresh, locally sourced produce, meats, seafood, and poultry to artisanal cheeses and Amish baked goods. You'll also find handmade crafts, unique jewelry, and beautiful pottery, making it the perfect spot for picking up one-of-a-kind gifts.

Photo: AnastasiaNess/Shutterstock.com
Address: 1136 Arch Street, Philadelphia
Public Transport: SEPTA Market-Frankford Line (Blue Line): The nearest station is 11th Street, just a short walk from the market; Buses: Several bus routes serve the area around Reading Terminal Market. Routes 4, 17, 23, 38, 44, and 62 will get you close.
Opening hours: Daily 8am-6pm
Phone: +1 215 922 2317
Internet: <https://readingterminalmarket.org>
Email: info@readingterminalmarket.org

Shane Confectionery

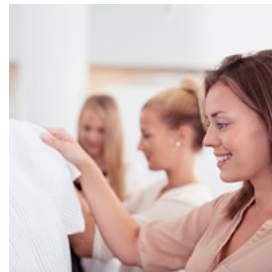


Established in 1911, Shane Confectionery is the oldest, continuously run confectionery in the nation. All candy is crafted and handmade on-site, with a changing array of seasonal specials. Proud to uphold the traditions of old-fashioned confections, Shane still uses the

recipes of its founders.

Photo: Markus Mainka/Shutterstock
Address: 110 Market Street, Philadelphia
Public Transport: Take the SEPTA Market-Frankford Line (Blue Line) and get off at 2nd Street Station; SEPTA Bus Routes 17, 33, 48, or 57.
Opening hours: Mon-Thu noon-8pm, Fri& Sat 11am-9pm, Sun 11am-8pm
Phone: +1 215 922 1048
Internet: <https://shanecandies.com>
Email: info@shanecandies.com

Macy's



Housed in the historic Wanamaker Building, this Macy's location offers a unique experience that connects nearly a century of retail tradition with modern-day shopping. Shoppers can explore brand-name clothing, accessories, home furnishings, and housewares while also enjoying a special treat—twice a day, the grand Wanamaker Organ, originally from the 1904 St. Louis World's Fair, fills the space with a concert, making it a cultural highlight of any visit.

Photo: racorn/Shutterstock.com
Address: 1300 Market Street, Philadelphia
Public Transport: SEPTA Regional Rail: Take any line to Jefferson Station; SEPTA Subway: Broad Street Line (Orange Line): Get off at the City Hall Station or Market-Frankford Line (Blue Line): Get off at the 15th Street Station; SEPTA Buses: Various bus routes such as Routes 21, 42, and 17 will take you to stops near Macy's.
Opening hours: Daily 10am-8pm
Phone: +1 215 241 9000

Philadelphia Mills



Philadelphia Mills is the largest outlet and value retail shopping center in the city, offering a mix of over 200 stores that cater to a wide range of styles and budgets. From popular brands like Saks Fifth Avenue OFF 5TH, Nike Factory Store, and Burlington to more niche shops, there's something for every shopper.

Besides retail therapy, Philadelphia Mills features a variety of eateries along with entertainment options like an AMC movie theater and round1 bowling & amusement center.

Photo: Pressmaster/Shutterstock

Address: 1455 Franklin Mills Circle, Philadelphia

Opening hours: Mon-Thu 11am-7pm, Fri & Sat 10am-8pm,

Sun 11am-6pm

Phone: +1 215 632 1500

Ten Thousand Villages



Shopping at Ten Thousand Villages isn't just a delightful experience—it's a chance to make a positive global impact. This unique gift store features handcrafted goods from skilled artisans in developing countries, all sourced through fair trade practices. Here, you'll find items from Asia, Africa, Latin America, and the Middle East, each piece telling a story of cultural heritage and sustainability.

Photo: ChiccoDodiFC/Shutterstock.com

Address: 1315 Walnut Street, Philadelphia

Opening hours: Mon-Sat 10am-7pm, Sun noon-6pm

Phone: +1 445 444 0632

Internet: www.tenthousandvillages.com

Material Culture



Though located outside of town, Material Culture is definitely worth the trip for anyone looking to browse through an assortment of global antiques, arts and crafts, plus modern decor items. The museum-like interior of the store makes it a fun visit even for those not planning to buy.

Photo: BearFotos/Shutterstock

Address: 4700 Wissahickon Avenue, Philadelphia

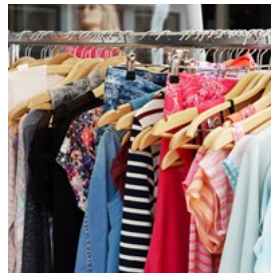
Opening hours: Daily 10am-5pm

Phone: +1 215 849 8030

Internet: <https://materialculture.com>

Email: info@materialculture.com

Greene Street Consignment



Specializing in consignment, Greene Street offers an ever-changing selection of brands, from high-end labels like Gucci to everyday favorites like Gap. New items arrive daily, ensuring fresh finds for savvy shoppers. True to its name, Greene Street combines fashion with sustainability, allowing customers to score quality pieces while supporting eco-friendly shopping habits.

Photo: Axel Bueckert/Shutterstock.com

Address: 8524 Germantown Avenue, Philadelphia

Opening hours: Sun-Thu 10am-7pm, Fri & Sat 10am-8pm

Phone: +1 267 331 6725

Internet: <https://greenestreetstores.com>

Philadelphia Premium Outlets



Located in Limerick Township, about 35 miles northwest of downtown Philadelphia, the Philadelphia Premium Outlets is a vast open-air mall featuring an impressive collection of 135 stores from top brands and designer names at prices reduced by 25-65% every day.

Shoppers can explore coveted stores like Michael Kors, Polo Ralph Lauren, American Eagle Outfitters, Levi's, and more. Whether you're in the market for luxury items or everyday fashion staples, visitors are truly spoiled for choice here.

Photo: Artem Beliaikin/Unsplash

Address: 18 Lightcap Road, Pottstown

Opening hours: Mon-Thu 10am-8pm, Fri & Sat 10am-9pm, Sun 10am-7pm

Phone: +1 610 495 9000

Internet: www.premiumoutlets.com/outlet/philadelphia

The Shops at Liberty Place



A dome-topped architectural gem in Philadelphia's business district, The Shops at Liberty Place once thrived as a bustling retail hub. In recent years, however, the number of stores has significantly decreased, and the current selection of retailers is more limited. Bloomingdale's, LOFT, and Victoria's Secret are some of the names housed here. A food court is included to fuel your shopping experience.

Photo: Sara Kurfeß/Unsplash

Address: 1625 Chestnut Street, Philadelphia

Opening hours: Mon-Sat 9:30am-7pm, Sun noon-6pm

Phone: +1 215 851 9055

Internet: www.shopsatliberty.com

Philly AIDS Thrift



Prepare to spend hours digging through this store's treasures if the words "vintage" and "thrift shop" make your heart beat faster. Clothes, vinyl, books, art, home decor, countless accessories, and much more await you here, so come with time, enthusiasm, and a bit of cash. The best thing about buying here is that the proceeds are distributed to local AIDS organizations.

Photo: nito/Shutterstock.com

Address: 710 S 5th Street, Philadelphia

Public Transport: SEPTA Bus: Take Bus Route 57 which runs along 3rd Street and stops near 5th Street; SEPTA Subway: Take the Market-Frankford Line (Blue Line) to 5th Street/Independence Hall Station, then walk south for about 15 minutes to reach Philly AIDS Thrift.

Opening hours: Mon-Sat 11am-8pm, Sun 11am-7pm

Phone: +1 215 922 3186

Internet: www.phillyaidsthift.com

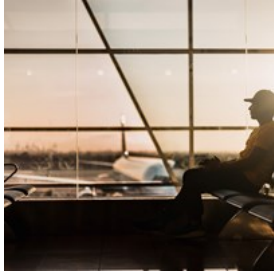
Email: phillyaidsthift@aol.com

TOURIST INFORMATION



f11photo/Shutterstock.com

Philadelphia International Airport (PHL)



Philadelphia International Airport is about 11 kilometers from Center City, a trip that takes approximately 20 to 30 minutes by car,

depending on traffic. Travelers have various options to reach the city, including taxis, rideshare services like Uber and Lyft, and car rentals. Public transport is another convenient and more affordable option, with the SEPTA Airport Line providing direct rail service to Center City in around 25 minutes. For those using buses, routes 37, 108, and 115 also connect the airport with different parts of Philadelphia.

Photo: Marco López/Unsplash

Address: Philadelphia International Airport, Philadelphia

Phone: +1 215 937 6937

Internet: www.phl.org

Best Time to Visit



The best time to visit Philadelphia is in the spring (March to May) or fall (September to November), when the weather is mild and

pleasant, and tourist crowds are manageable. Spring brings blooming flowers and the famous Philadelphia Flower Show, while fall ushers in events like the Fringe Festival and Restaurant Week.

Summer can be hot and humid, though it's popular for events like Wawa Welcome America and the Made in America Festival. Winter tends to see fewer visitors, meaning lower accommodation rates, but you can enjoy holiday festivities and another round of Restaurant

Week.

Photo: ActionVance/Unsplash

Passport/Visa



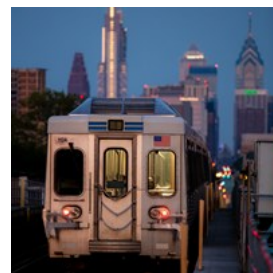
Citizens of Schengen Area countries, along with Andorra, Australia, Brunei, Canada, Ireland, Japan, Monaco, New Zealand, San Marino,

Singapore, South Korea, Taiwan, and the United Kingdom, can visit the United States for up to 90 days without needing a visa, provided they obtain an approved ESTA (Electronic System for Travel Authorization) before their trip. All other travelers must secure a visa before visiting the U.S.

In addition, international travelers must ensure their passport is valid for at least six months beyond their intended stay. For the most current information and any updates on entry requirements, it is advisable to consult the U.S. Department of State website or contact the nearest U.S. embassy or consulate before traveling.

Photo: ConvertKit/Unsplash

Public Transport



The Southeastern Pennsylvania Transportation Authority (SEPTA) incorporates many forms of transit: buses, trolleys, subways, and regional rail services.

Buses run frequently throughout the city and suburbs, while Philadelphia's trolley system is one of the few remaining in the U.S., offering a

charming way to explore Philly's neighborhoods.

The subway consists of two main lines—Market-Frankford (blue) and Broad Street (orange)—providing quick access to major attractions like the Liberty Bell and the Philadelphia Museum of Art. For those looking to venture beyond the city, the regional rail lines connect to surrounding towns and cities.

Public transportation in Philadelphia is an excellent option for tourists, as it is reliable, easy to navigate, and cost-effective. To facilitate travel, visitors can use the SEPTA Key Card, a contactless fare card available at kiosks in subway stations. Fare options include a single ride, a one-day convenience pass for unlimited rides, and a weekly pass.

For information on fares, routes, and timetables, visit SEPTA's official website.

Photo: Trev W. Adams/Pexels
Internet: www.septa.org

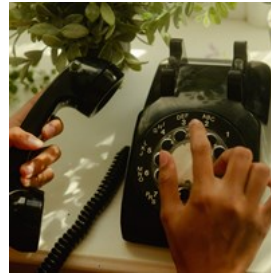
Taxi



Finding taxis in Philadelphia is relatively easy, especially in busy areas like Center City or near transportation hubs such as the airport and train stations. In addition to traditional taxis, ride-sharing apps like Uber, Lyft, and Curb operate widely across the city, offering a convenient alternative.

Photo: Fotis Fotopoulos/Unsplash
Address: Streamline Taxi Service
Phone: +1 267 226 0254

Telephone



Country code: +1 Area Codes in Philadelphia: 215, 267, and 445

Photo: Wesley Hilario/Unsplash

Electricity



US standard voltage is 110-115V and the standard frequency is 60Hz. The sockets and the power plugs are of type A and B. Type A plugs have two flat parallel pins, while Type B plugs have two flat parallel pins plus a grounding pin.

Photo: Clint Patterson/Unsplash

Pharmacy



In Philadelphia, the main pharmacy chains include CVS Pharmacy, Walgreens, and Rite Aid, all of which have numerous locations across the city. They provide prescription services, over-the-counter medications, and general health and wellness products. These chains also offer a range of services, such as flu shots, immunizations, and health consultations. You can also find pharmacies inside Walmart and Target.

Photo: Mariano Baraldi/Unsplash
Address: CVS - 1405 S 10th Street, Philadelphia
Opening hours: Open 24/7
Phone: +1 215 465 2130

Post



In Philadelphia, post offices typically open from 8:30am to 5pm Monday through Friday, and from 9am to 1pm on Saturdays. Services

provided include mailing and shipping via USPS, P.O. boxes, and money orders.

Letterboxes, which are blue with the USPS logo, are relatively easy to find throughout the city, especially near major buildings, transit stations, and street corners.

Photo: Simona Sergi/Unsplash

Address: PHILADELPHIA — Post Office - 3000 Chestnut Street Suite 42262, Philadelphia

Opening hours: Mon-Sat 8am-9pm, Sun noon-6pm

Phone: +1 800 275 8777

Internet: www.usps.com

Time Zone



Philadelphia is located in the Eastern Time Zone (ET). This time zone is 5 hours behind Coordinated Universal Time (UTC-5).

Photo: Alexander Schimmeck/Unsplash

Population

City: 1.5 million (2024)

Metro area: 5.8 million (2024)

Currency

US Dollar (USD)

Internet

www.visitphilly.com

Newspapers

The Philadelphia Inquirer: www.inquirer.com

Philadelphia Magazine: www.phillymag.com

Metro Philadelphia: <https://metrophiladelphia.com>

Emergency numbers

911

Tourist information

Independence Visitor Center
599 Market Street, Philadelphia
+1 800 537 7676
Opening hours: daily 9am-6pm

Information is subject to change. Please contact your Lifestyle Consultant for the most up-to-date recommendations.