



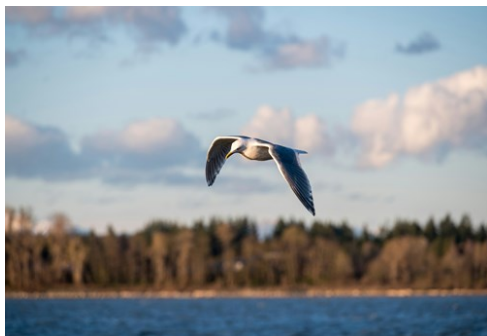
Blaine, Washington

Photo: Edmund Lowe Photography/shutterstock



Edmund Lowe Photography/shutterstock

Escape to Blaine, Washington, a haven of natural beauty and outdoor recreation. Located 35 miles south of Vancouver, British Columbia, and 110 miles north of Seattle, Blaine is known for its cleanliness, safety, and exquisite natural beauty. Explore over a dozen parks perfect for bird watching, biking, and hiking, or tee off at one of the manicured golf courses. Discover the charm of Blaine and create your perfect getaway.

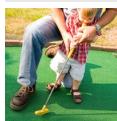


Herry Sutanto/unsplash



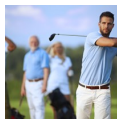
Herry Sutanto/unsplash

Featured



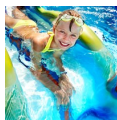
Station 49

Experience family fun at its best with a variety of entertainment options in...



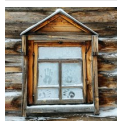
Loomis Trail Golf Club

Experience a top-ranked golfing challenge at Loomis Trail Golf Course. This ...



Birch Bay Waterslides

Birch Bay Waterslides is a beloved water park that has been a summer staple ...



Ferndale Heritage Society

Step back in time at Pioneer Park, established in 1901 and preserved by the ...



Bellingham Sportsplex

Bellingham Sportsplex is a multi-use sports facility offering a variety of a...

Top 5



Outer Island Expeditions

Outer Island Expeditions offers everything visitors could want when it comes...



Peace Arch Park

Peace Arch Park is a unique 20-acre sanctuary that straddles the boundary be...



Semiahmoo Park

Semiahmoo Park is one of the country's most scenic peninsulas. Discover its...



The Spa at Semiahmoo Resort

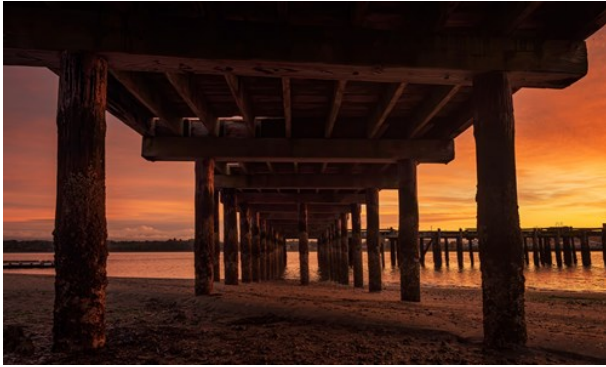
Indulge in a rejuvenating experience at The Spa at Semiahmoo Resort. This ha...



Family Interactive Gallery...

The Family Interactive Gallery at the Whatcom Museum is a fun and educationa...

THE CITY



David Jolly/shutterstock

Blaine, known as "the Peace Arch City," was first settled in the mid-nineteenth century. Pioneers established the town not only as a vital seaport for the west coast logging and fishing industries, but also as a jumping-off point for prospectors seeking their fortune in British Columbia's gold fields. Remnants of this history are still visible today. The world's largest salmon cannery, now a vibrant waterfront destination, stands as a testament to Blaine's industrial past.

Many sawmills once operated in Blaine, and much of the lumber manufactured in the area was transported to San Francisco to help rebuild the city after the devastating 1906 earthquake and fire. Today, Blaine's two large marinas still bustle with activity, home to hundreds of sailboats and yachts. Local fishermen continue to ply the waters, bringing in fresh catches of crab, salmon, and oysters.

Blaine's northern boundary is the Canada-U.S. border, marked by the Peace Arch international monument that straddles both countries. With its rich history, diverse activities, and unique location described in the city's motto "Where America Begins," Blaine offers visitors a captivating blend of past and present.

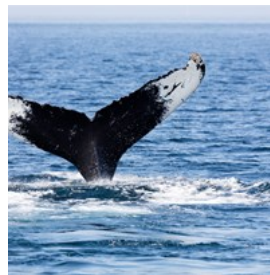
DO & SEE



David Jolly/shutterstock

Embrace the diverse recreational opportunities in Blaine, with activities for every interest and season. Explore scenic hiking trails through lush forests and enjoy breathtaking coastal views. Spot fascinating bird species, go bicycling along picturesque routes, or cast a line from the public pier. Kayakers can paddle through the sparkling waters and experience the beauty of the coastline. For those seeking a different kind of recreation, Blaine also boasts world-class golfing opportunities year-round. Discover the perfect activity for you and create your ideal Blaine adventure.

Outer Island Expeditions



Outer Island Expeditions offers everything visitors could want when it comes to the ocean. Outer Island Expeditions provides whale watching, fishing charters, kayaking, lighthouse tours and island tours.

Photo: Sviluppo/Shutterstock.com

Address: Smugglers Villa Resort, 54 Hunt Road, Eastsound, WA

Phone: +1 360 376 3711

Internet: www.outerislandx.com

Email: outerislandx@hotmail.com

Peace Arch Park



Peace Arch Park is a unique 20-acre sanctuary that straddles the boundary between the United States and Canada. Explore the park's vibrant gardens bursting with colorful blooms and stroll through vast lawns offering panoramic views of Point Roberts and Vancouver Island. It's a place where two nations meet in peace and celebration, with a busy calendar of cultural events.

Photo: Kevin_Hsieh/Shutterstock.com
Address: Peace Arch Historical State Park, 123 2nd Street, Blaine, WA
Internet: www.peacearchpark.org

Semiahmoo Park



Semiahmoo Park is one of the country's most scenic peninsulas. Discover its peaceful, two-sided beachfront, where you can observe sea lions and seabirds. Explore the park's trails and hidden coves, and enjoy panoramic views that stretch across the border to Canada. Don't miss the seasonal cannery museum, offering a glimpse into the area's history.

Photo: Sheila Say/shutterstock
Address: 9261 Semiahmoo Parkway, Blaine, WA
Internet: www.whatcomcounty.us/3579/Semiahmoo-Park

The Spa at Semiahmoo Resort



Indulge in a rejuvenating experience at The Spa at Semiahmoo Resort. This haven of tranquility offers a sanctuary for indulgent facials, soothing body wraps, and revitalizing experiences for mind, body, and spirit. Unwind with a massage overlooking the water, or pamper yourself with a luxurious skincare treatment.

Photo: Syda Productions/Shutterstock.com
Address: 9565 Semiahmoo Pkwy, Blaine, WA
Phone: +1 360 318 2009
Internet: www.semiahmoo.com/spa.php

Family Interactive Gallery at Whatcom Museum



The Family Interactive Gallery at the Whatcom Museum is a fun and educational experience for families. With over 15 activity stations and a variety of hands-on activities, children can explore and learn while playing. The FIG provides educational opportunities in science, technology, art, and more. It's the perfect place for families to spend time together and discover something new.

Photo: Monkey Business Images/shutterstock
Address: 250 Flora Street, Bellingham, WA
Phone: +1 360 778 8970
Internet: www.whatcommuseum.org/explore/family-interactive-gallery/about-the-fig

Station 49



Experience family fun at its best with a variety of entertainment options in a safe and exciting environment. Challenge your skills on the

championship 18-hole miniature golf course, race around the go-kart track, or embark on a scenic miniature train ride through 10 acres of forest. For indoor entertainment, explore the arcade and relax in the seating area. Adults can unwind in the new family bar area, offering beer and other beverages. Create lasting memories with a day of fun for the whole family.

Photo: Sean Locke Photography/Shutterstock.com
Address: 4620 Birch Bay Lynden Road, Blaine, WA
Opening hours: Open seasonally
Phone: +1 360 371 7700
Internet: www.station49.fun

Lynden Heritage Museum



Step into the past at the Lynden Heritage Museum, where the history of the region comes to life. Founded in 1976, the museum spans

half a city block and houses a captivating display of horse-drawn vehicles, including antique carriages and wagons. Explore fascinating exhibits that chronicle the settling of Lynden and its surrounding areas, and discover the stories of the pioneers who shaped the community.

Photo: Iakov Filimonov/Shutterstock.com
Address: 217 Front Street, Lynden, WA
Phone: +1 360 354 3675
Internet: www.lyndenheritagemuseum.org
Email: troy@lyndenpioneermuseum.com

Birch Bay Waterslides



Birch Bay Waterslides is a beloved water park that has been a summer staple in the area for over 40 years. With eight exhilarating slides, a

kiddie pool, an activity pool, and a relaxing hot tub, there's something for everyone in the family to enjoy. Cool off on a hot summer day, experience the thrill of the slides, and make lasting memories at this cherished community gem. A gift shop and concession services are also available to enhance your visit.

Photo: Poznyakov/Shutterstock.com
Address: 4874 Birch Bay-Lynden Road, Blaine, WA
Opening hours: Open seasonally
Phone: +1 360 371 7500
Internet: www.birchbaywaterslides.net

Ferndale Heritage Society



Step back in time at Pioneer Park, established in 1901 and preserved by the Ferndale Heritage Society. The park offers a glimpse into the lives of

early settlers with its collection of historic cabins and artifacts. The Society offers spring School Tours, educating local students on Whatcom County history. Explore the park and discover the stories of the pioneers who shaped the region. Arrange a tour and experience this unique window into the past.

Photo: Yulia Polyakova/pexels
Address: 2004 Cherry Street, Ferndale, WA
Phone: +1 360 384 6461
Internet: www.ferndaleheritagesociety.org
More Info: Open from May 15 until September 15.

Bellingham Sportsplex



Bellingham Sportsplex is a multi-use sports facility offering a variety of activities for all ages. Enjoy ice skating on the indoor rink, play soccer

on the two turf fields or the indoor soccer field, or host a memorable party in the spacious facility. With its diverse offerings, Bellingham Sportsplex is the perfect destination for sports fans and families.

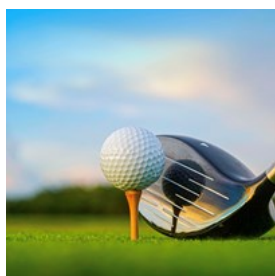
Photo: kuzsvetlaya/Shutterstock.com

Address: 1225 Civic Field Way, Bellingham, WA

Phone: +1 360 676 1919

Internet: whatcomsportsandrec.com

Semiahmoo Golf & Country Club



Experience golf at its finest at Semiahmoo Golf & Country Club, designed by the legendary Arnold Palmer. This stunning course earned a #7

ranking among Washington's public courses by Golfweek in 2012. With 7,005 yards of tree-lined fairways, challenging water features on five holes, and 67 strategically placed bunkers, Semiahmoo offers a memorable experience for golfers of all levels.

Photo: Mr Somchai Sukkasem/shutterstock

Address: 8720 Semiahmoo Parkway, Blaine, WA

Phone: +1 360 371 7015

Internet: www.semiahmoogolf.com

Email: golf@semiahmoo.com

Loomis Trail Golf Club



Experience a top-ranked golfing challenge at Loomis Trail Golf Course. This exceptional course holds the distinction of being the only course in

Washington State to make the nation's Top 100. Its challenging system of canals and lakes give it one of the highest slope ratings in the state, offering a thrilling experience for seasoned golfers. The course is open to the public on even days of the month, allowing everyone to test their skills on this remarkable layout.

Photo: StockLite/Shutterstock.com

Address: 4342 Loomis Trail Road, Blaine, WA

Phone: +1 60 332 1725

Internet: golfloomis.com

DINING



Robert Kneschke/Shutterstock.com

Blaine offers a diverse culinary scene where fresh seafood meets international flavors. Indulge in fresh catches of the day, from succulent salmon to Dungeness crab, at waterfront restaurants with stunning views. Explore a variety of cuisines, from Thai curries and American classics to sizzling steaks and casual diner fare.

Jack Niemann's Black Forest Steak House



Jack Niemann's Black Forest Steak House is a classy restaurant offering classic American steak and seafood dishes, as well as some German

specialties. Discover their selection of prime and signature steaks, or explore other menu options like soups, salads, chicken, seafood, and pasta.

Photo: Food Impressions/Shutterstock.com

Address: 638 Peace Portal Drive, Blaine, WA

Phone: +1 360 306 8342

Internet: www.theblackforeststeakhouse.com

Drayton Harbor Oyster Company



Drayton Harbor Oyster Bar is a rustic waterfront restaurant overlooking the scenic harbor.

Discover its warm, timber-clad interior and

savor fresh oysters and small seafood dishes, perfectly complemented by a selection of wine and beer. Indulge in the briny sweetness of freshly shucked oysters or the warm, buttery goodness of baked oysters, available for dining in or to-go.

Photo: Nishihama/Shutterstock.com

Address: 685 Peace Portal Drive, Blaine, WA

Phone: +1 360 656 5958

Internet: www.draytonharboroysters.com

Great Blue Heron Grill



The Great Blue Heron Grill is a relaxed restaurant with scenic golf course views.

Discover fresh, flavorful dishes and a welcoming

atmosphere, perfect for any occasion.

Photo: Xan/Shutterstock.com

Address: Semiahmoo Golf & Country Club, 8720 Semiahmoo Parkway, Blaine, WA

Phone: +1 360 371 5745

Internet: www.semiahmoogolf.com/great-blue-heron-grill

Monte's Just A Bite



Monte's Just A Bite cafe offers casual dining in a genuinely welcoming atmosphere. Discover its rustic interior with entertaining decor and

enjoy excellent, reasonably priced breakfast and lunch. Options range from fluffy pancakes and hearty omelets to fresh salads and savory sandwiches.

Photo: Valentyn Volkov/Shutterstock.com

Address: 679 Peace Portal Drive, Blaine, WA

Phone: +1 360 393 3110

Paso del Norte



Paso del Norte is a family owned restaurant that has been in business for many years. They boast an outside dining patio, private rooms, and a full

service bar. Paso del Norte serves up Mexican dishes 7 days a week.

Photo: gkrphoto/Shutterstock.com

Address: 758 Peace Portal Drive, Blaine, WA

Phone: +1 360 332 4045

Internet: www.pasodelnorte.net

Email: info@pasodelnorte.net

Chada Thai



Chada has delicious Thai cuisine. Menu items at Chada include: chicken satay, spring rolls, crab rangoon, and much more.

Photo: dolphfyn/Shutterstock.com

Address: 825 Peace Portal Drive, Blaine, WA

Phone: +1 360 332 3267

Internet: www.chadathaiusa.com

Bob's Burgers & Brew Birch Bay



Bob's Burgers and Brew has over 20 different beef and chicken burgers. They also offer breakfast items like pancakes and french toast.

Photo: Timolina/Shutterstock.com

Address: 8120 Birch Bay Square Street, Blaine, WA

Phone: +1 360 366 3199

Internet: bobsburgersandbrewbirchbay.com

CAFES



Kzenon/Shutterstock.com

Blaine's cafes offer the perfect pick-me-up after a day of sightseeing. Discover a variety of refreshing beverages, from coffee and espressos to smoothies and more, alongside delicious food options to satisfy your cravings.

Peace Arch City Café & Bar



Peace Arch City Café & Bar offers a full espresso bar along with many types of pastries, including berry scones, muffins, cinnamon rolls, and cookies.

Photo: Nataliia Doroshenko/Shutterstock.com

Address: 658 Peace Portal Drive, Blaine, WA

Phone: +1 360 332 5212

Internet: peacearchcitycafe.com

Email: peacearchcitycafe@gmail.com

The Woods Coffee



The Woods Coffee is a local cafe chain serving a variety of beverages and treats. Discover their extensive menu, including lattes, mochas, caramel macchiatos, cold brew, and more. Pair your drink with a sweet treat or enjoy a light lunch with sandwiches, cookies, and artisan breads.

Photo: Oliveshadow/Shutterstock.com

Address: Birch Bay Square, 8130 Birch Bay Square Street, Blaine, WA

Phone: +1 360 393 4761

Internet: woodscoffee.com

The C Shop



The C Shop is a busy corner store offering a delightful array of treats and eats. Discover everything from ice cream and chocolates to candies, pastries, and sandwiches — they even have a pizza menu. Chat with the candymakers on-site as they prepare homemade fudge, caramel, peanut brittle, seafoam, and

marshmallows.

Photo: Africa Studio/shutterstock

Address: 4825 Alderson Road, Birch Bay, Blaine, WA

Internet: www.theshop.com

Avellino Coffeehouse



Avellino Coffeehouse has been in business for nearly 15 years. They have a menu of delicious coffee and bakery items, and even a gluten free

menu.

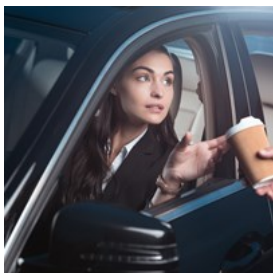
Photo: Rose-Marie Henriksson/Shutterstock.com

Address: 1329 Railroad Avenue, Bellingham, WA

Phone: +1 360 715 1005

Internet: www.avellinocoffeehouse.com

Cruisin Coffee



Cruisin Coffee is a popular chain of drive-through coffee shops, each housed in a charming round hut.

Discover a variety of ways to customize your drink with different flavors, milks, and syrups. Enjoy a quick breakfast with their delicious breakfast sandwiches and refreshing Italian sodas.

Photo: LightField Studios/Shutterstock.com

Address: 3906 Bennett Drive, Bellingham, WA

Phone: +1 360 715 8700

Internet: www.cruisincoffee.com

Mugshots Espresso



Mugshots Espresso has locally roasted, gourmet coffee. Fresh scones, muffins and cookies are available to pair with your drinks.

Photo: [baranq/Shutterstock.com](https://www.shutterstock.com/author/baranq)

Address: 5750 Vista Drive, Ferndale, WA

Phone: +1 360 312 9181

Internet: www.instagram.com/mugshots_espresso

Email: MugShotsEspresso@comcast.net

Eucatastrophe Coffee & Used Books



Eucatastrophe is a unique coffee and used bookstore offering a delightful experience for bookworms and coffee lovers alike. Explore the collection of collectible books while savoring a cup of coffee from their selection of over a dozen blends.

Photo: [Mutita Narkmuang/Shutterstock.com](https://www.shutterstock.com/author/Mutita)

Address: 515 Front Street, Lynden, WA

Phone: +1 360 354 2471

Internet: www.instagram.com/eucatastrophelynden

BARS & NIGHTLIFE



wavebreakmedia/Shutterstock.com

Blaine's nightlife offers a vibrant scene for seekers of after-dark entertainment. Explore a variety of bars and grills, each with its unique atmosphere and offerings, or enjoy a relaxing evening at a local winery.

The Wheelhouse Sports Bar and Grill



The Wheelhouse offers many different type of beers on tap. Domestic and imported beer is offered by the bottle or can. They also provide a menu that includes pizzas, sandwiches, hot dogs and salads.

Photo: Minerva Studio/Shutterstock.com

Address: 746 Peace Portal Drive, Blaine, WA

Phone: +1 360 332 3512

Internet: www.wheelhousesportsbar.com

GLM Wine Co.



Glacial Lake Missoula Winery is a locally owned winery in Blaine. A barrel room, family rooms and wine tastings are featured.

Photo: racorn/Shutterstock.com

Address: 1678 Boblett Street, Blaine, WA

Phone: +1 360 332 2097

Internet: www.glmwine.com

Email: tom@glmwine.com

Main Street Bar & Grill



live music.

Main Street Bar and Grill has a complete appetizer and dinner menu. They always have something exciting going on, like pool, karaoke, dancing or

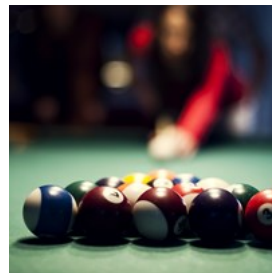
Photo: Areipa It/Shutterstock.com

Address: 2005 Main Street, Ferndale, WA

Phone: +1 360 312 9162

Internet: www.instagram.com/themainstreetbarandgrill

Cocoanut Grove



The Cocoanut Grove offers a lively atmosphere, a wide selection of beers on tap and delicious pub fare. Multiple big-screen TVs show various sports games, with staff happy to accommodate channel requests. Other entertainment options include pull tabs, pool tables, and classic upright video games.

The Cocoanut Grove offers a lively atmosphere, a wide selection of beers on tap and delicious pub fare. Multiple big-screen TVs

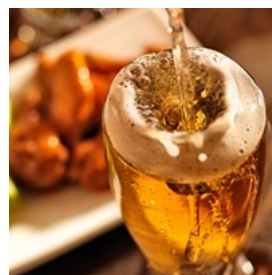
Photo: gpoinstudio/Shutterstock.com

Address: 710 Marine Drive, Bellingham, WA

Phone: +1 360 671 6756

Internet: wheelhousesportsbar.com/cocoanutgrove

Boundary Bay Brewery & Bistro



Boundary Bay Brewery & Bistro is a casual brewpub offering handcrafted beer and a diverse menu of delicious food. Discover a range of hearty options, including burgers, pasta, pizza,

Boundary Bay Brewery & Bistro is a casual brewpub offering handcrafted beer and a diverse menu of delicious food. Discover a range of

and soups. Enjoy your meal on the deck or in the beer garden, where you can savor locally sourced pub grub and craft beer.

Photo: Joshua Resnick/Shutterstock.com
Address: 1107 Railroad Avenue, Bellingham, WA
Phone: +1 360 647 5593
Internet: www.bbaybrewery.com

The Temple Bar



"Where old-world fare meets Northwest foodie!"

The Temple Bar is creative and sexy, with plenty of artisan cheese, cured meat, seasonal specialties and carefully crafted cocktails. They voted "Best Happy Hour" four years in a row by readers of the Cascadia Weekly.

Photo: Maxim Blinkov/Shutterstock.com
Address: 306 West Champion Street, Bellingham, WA
Phone: +1 360 676 8660
Internet: www.templebarbellingham.com
Email: info@templebarbellingham.com

SHOPPING



oneinchpunch/Shutterstock.com

With three major malls, Blaine has everyone covered. If you like the crowds and bustle of bargain hunting, or prefer smaller, unique boutique shops, you can find it all. Make sure to pick up some alpaca wool apparel or special souvenirs.

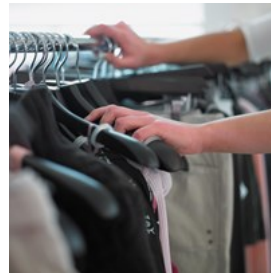
Blaine Bouquets



Blaine Bouquets offers a wide variety of floral arrangements for every occasion. Discover the perfect bouquet to celebrate holidays and special occasions with the beauty of nature's blooms.

Photo: Kzenon/Shutterstock.com
Address: 625 Peace Portal Drive, Blaine, WA
Phone: +1 360 332 6700
Internet: www.blainebouquets.net

Betty Be Good Boutique



Betty Be Good is a chic boutique featuring a curated selection of styles made from recycled materials. Refresh your wardrobe with their unique and affordable pieces, showcasing sustainable fashion at its best.

Photo: Blend Images/Shutterstock.com
Address: 8125 Birch Bay Square Street, 201, Blaine, WA
Phone: +1 360 441 7691
Internet:
shopbettybegood.com/pages/betty-s-going-bricks-mortar

Chocolate Necessities & Gelato



Meridian Street offers a variety of local and nationally recognized stores. Discover unique treasures like Chocolate Necessities, a shop specializing in handcrafted chocolates. Try their adorable and delicious creations, complemented by exceptional service. Enjoy a scoop (or two!) of gelato from their wide selection of flavors, and relax in the fun seating area.

Photo: A. and I. Kruk/Shutterstock.com

Address: 4600 Guide Meridian 109, Bellingham, WA

Phone: +1 360 733 6666

Internet: chocolatenecessities.com

Downtown Bellingham



Downtown Bellingham is a shopper's paradise, offering a diverse array of specialty boutiques, charming bookstores, and the vibrant Bellingham

Farmers' Market every Saturday. Discover unique treasures at Third Planet Boutique, The Greenhouse, Allied Arts of Whatcom County, and Belle Flora, among other local gems.

Photo: Pavl Polø/unsplash

Address: Commercial Street, Bellingham, WA

Phone: +1 360 527 8710

Internet: www.downtownbellingham.com

Historic Fairhaven District



Step into the charming district of Fairhaven, with its historic brick facades and a treasure trove of unique shops and galleries. Discover

upscale galleries showcasing diverse styles and mediums, alongside boutiques offering stylish clothing and exquisite jewelry. Browse the shelves at Village Books and Paper Dreams, admire handcrafted pottery at Good Earth Pottery, and find the perfect piece of jewelry at Whimsey.

Photo: Lorin Lindell/unsplash

Address: Harris Avenue, Bellingham, WA

Internet: www.fairhaven.com

Barkley Village



Barkley Village is a welcoming shopping plaza featuring a variety of specialty shops, restaurants, and a cinema with an IMAX screen.

Explore the diverse shops, enjoy a delicious meal, or catch a movie on the big screen.

Photo: racorn/Shutterstock.com

Address: 2900 Woburn Street, Bellingham, WA

Phone: +1 360 671 6450

Internet: www.barkleyvillage.com

Downtown Lynden



Experience the charm of Lynden, a town steeped in Dutch heritage and known for its picturesque architecture. In downtown Lynden, you'll

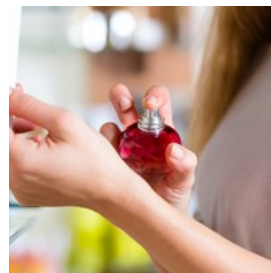
find The Jansen Art Center, showcasing local and international artists, and the Lynden Heritage Museum, where you can delve into the town's rich history. Indulge in delicious treats at local bakeries, savor diverse cuisine at charming restaurants, and uncover unique treasures in antique shops.

Photo: Lorin Lindell/unsplash

Address: Downtown Lynden

Internet: www.lynden.org

Duty Free Americas 213



Duty Free is your one-stop shop for a wide selection of duty-free merchandise. Discover savings on alcohol, tobacco, fragrances,

watches, gifts, jewelry, and travel-related items from renowned brands like Dior, Chanel,

Lancôme, Gucci, Calvin Klein, and Lacoste.

Photo: Kzenon/Shutterstock.com

Address: 20 12th Street, Blaine, WA

Phone: +1 360 332 5223

Internet: www.dutyfreeamericas.com

Birch Bay Square



Birch Bay Square is a shopping center with a variety of shops and eateries. Discover popular options like The Woods Coffee, Jack in the Box, and The Markets at Birch Bay.

Photo: pikselstock/Shutterstock.com

Address: 8115 Birch Bay Square Street, Blaine, WA

Phone: +1 360 366 3127

Internet: birchbaysquare.com

Back In Thyme Herbals



Back in Thyme is a small lavender and herb farm in Ferndale. Discover a delightful selection of handcrafted items, including vintage fabrics, potpourri, soaps, and purses.

Photo: Jag_cz/Shutterstock.com

Address: 7247 Everett Road, Ferndale, WA

Phone: +1 360 303 5103

Email: backinthyme4me@yahoo.com

Bellis Fair Mall



Bellis Fair Mall in Bellingham is a premier shopping destination for the whole family. Discover a wide variety of top brands and tempting dining options, all set against a scenic backdrop. Families will appreciate the children's play area

and convenient food court. Whether you're an outdoorsman or an urbanite, Bellis Fair Mall offers something for everyone.

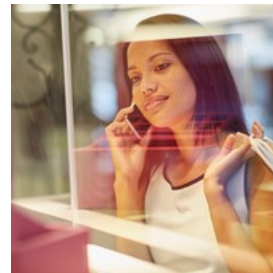
Photo: Ivanko80/Shutterstock.com

Address: 1 Bellis Fair Parkway, Bellingham, WA

Phone: +1 360 671 5895

Internet: bellisfair.com

Sunset Square Shopping Center



Sunset Square features Joann's Fabrics, a grocery store and drug store, and several specialty shops. There are a variety of restaurants and cafes, too.

Photo: mavo/Shutterstock.com

Address: 1135 East Sunset Drive, Bellingham, WA

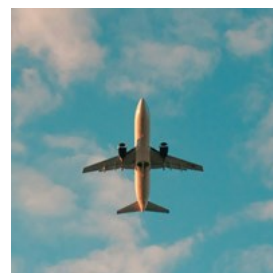
Phone: +1 833 800 4343

TOURIST INFORMATION



theasophie/unsplash

Bellingham International Airport (BLI)



The Bellingham International Airport (BLI) serves the Blaine area. BLI receives flights from Alaska Airlines, Allegiant Air, and

Frontier Airlines. The airport also functions as a low cost alternative airport to the Vancouver International Airport.

Photo: Philip Myrtoorp/unsplash

Address: 4255 Mitchell Way, Bellingham, WA

Phone: +1 360 671 5674

Internet:

www.portofbellinham.com/82/Airport-Administration

Public Transport



Whatcom Transportation Authority (WTA) provides fixed route bus service, specialized transportation, and vanpools to the Blaine

area. Four transit centers are serviced:

Bellingham Station, Cordata Station (in North Bellingham), Ferndale Station and Lynden Station.

Photo: Hobi industri/unsplash

Phone: +1 360 676 7433

Internet: www.ridewta.com

Post



Sending parcels and letters in the US is a relatively straightforward process. The most common method is the United States Postal

Service (USPS). The USPS offers a variety of services for sending mail, including First-Class Mail for letters and postcards, Priority Mail for packages, and Priority Mail Express for overnight delivery. To send a parcel or letter, you will need to take it to a USPS post office or use a USPS blue collection box. If you are in Washington State, you can use the USPS website to find the nearest post office or collection box to your location. Additionally, you can also use

private couriers such as FedEx and UPS, which often provide a wider range of services and faster delivery times, but generally at a higher cost.

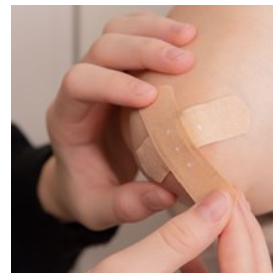
Photo: Joel Moysuh/unsplash

Address: United States Postal Service, 701 Harrison Avenue, Blaine, WA

Phone: +1 360 332 7184

Internet: www.usps.com

Pharmacy



The biggest pharmacy in Blaine is Rite Aid. You'll find big chains like Walgreens in Ferndale, and CVS Pharmacy, Safeway, Costco and

Walmart in Bellingham.

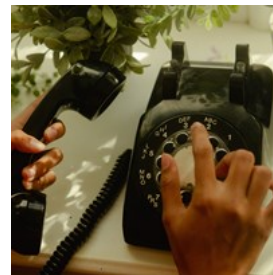
Photo: Diana Polekhina/unsplash

Address: Rite Aide Pharmacy, 1195 Boblett Street, Blaine, WA

Phone: +1 360 332 1616

Internet: www.riteaid.com

Telephone



Country code: +1 Blaine area code: 360

Photo: Wesley Hilario/unsplash

Electricity



All power sockets in the United States provide a standard voltage of 110-120V with a standard frequency of 60Hz. Plug type A has two flat

parallel pins.

Photo: ergonomis/unsplash

Population

6,342

Currency

\$1 U.S. = 100 cents

Opening hours

General opening hours for stores are from 10am until 9pm.

Internet

www.ci.blaine.wa.us

blainebythesea.com

Newspapers

The Northern Light: www.thenorthernlight.com

Whatcom News: whatcom-news.com

Emergency numbers

911

Tourist information

Blaine Visitor Information Center

728 Peace Portal Drive, Blaine, WA

www.blainechamber.com/visitor-information-center

+1 360 332 4544

Information is subject to change. Please contact your Lifestyle Consultant for the most up-to-date recommendations.