



Belize City

Photo: Alisa Matthews/unsplash



Lara Danielle/cc by-nd 2.0/Flickr



Alisa Matthews/unsplash.com



Meritt Thomas/unsplash.com

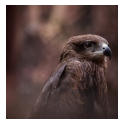
Belize City is the largest city and former capital of Belize, a small country located on the eastern coast of Central America. Situated at the mouth of the Belize River, the city serves as the country's main port and commercial hub. It is home to a diverse mix of cultures and expatriates from around the world, lending it a unique flavor and character. Despite its compact size, Belize City is a vibrant and bustling urban center that's packed with exciting attractions—from historic landmarks and museums to lively markets and outdoor activities.

Featured



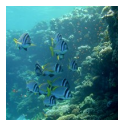
Baron Bliss Light

Baron Bliss Light is a lighthouse that was built in 1885 and named after Hen...



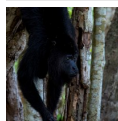
Crooked Tree Wildlife Sanc...

Since its inception in 1984, Crooked Tree Wildlife Sanctuary has been recogn...



Lighthouse Reef

Positioned at the easternmost end of the Belize Barrier Reef, Lighthouse Ree...



Community Baboon Sanctuary

Community Baboon Sanctuary's primary objective is preserving and safeguardin...

Top 5



Museum of Belize

The Museum of Belize is an art and history museum, built between the years 1...



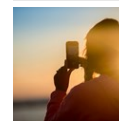
Altun Ha

Altun Ha is situated approximately 31 miles (50 kilometers) north of Belize ...



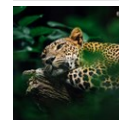
St. John's Cathedral

Constructed during a tumultuous period when colonial powers were vying for c...



The Belize Sign Monument

The Belize Sign Monument is located just a short distance from the Baron Bli...



The Belize Zoo and Tropica...

The Belize Zoo and Tropical Education Center is a unique wildlife conservati...

THE CITY



Meritt Thomas/unsplash.com

Belize City is a melting pot of different cultures, with influences from various ethnic groups such as the Garifuna, Creole, Mayan, and Mestizo, among others. Its tropical climate is characterized by high humidity and temperatures that average around 80°F (27°C) throughout the year.

As the former capital of British Honduras, Belize City is steeped in a rich history that visitors can discover by exploring historical landmarks like the Baron Bliss Lighthouse and St. John's Cathedral. The city is also the commercial center of Belize, with a busy port and bustling streets filled with shops and businesses.

Belize City has a vibrant nightlife scene, with numerous bars, nightclubs, and restaurants offering a mix of local and international cuisine and entertainment options.

DO & SEE



Jackie Parker/unsplash.com

Belize City offers a range of activities and attractions for visitors to explore. Immerse yourself in the city's rich history by visiting its historical sites, museums, and cultural centers, such as the Museum of Belize, Belize Arts Council, and Factory Art Image Foundation. Additionally, while in Belize City, you can savor the local cuisine or go shopping for local handicrafts.

Museum of Belize



The Museum of Belize is an art and history museum, built between the years 1854 and 1857 while Belize was still under Britain's rule. It initially served as a prison and then, in 2002, it was transformed into a museum. Divided into three distinct sections — History, Exhibits, and Activities — the museum is home to several exhibits that delve into the past of the city, the people that inhabited the British Colony of British Honduras, and the pivotal events that have shaped modern-day Belize.

Photo: ironypoisoning/cc by-sa 2.0/Wikimedia(image cropped)

Address: 5 Eve Street, Belize City, Belize

Opening hours: Daily 9am–4pm

Internet: www.travelbelize.org/attraction/museum-belize/

Altun Ha



Altun Ha is situated approximately 31 miles (50 kilometers) north of Belize City and it's home to the famous jade stone carved in the likeness of the Mayan sun god, Kinich Ahau, which graces the national currency. The temple is comprised of two primary clusters: Plaza A and Plaza B, each with its own unique offerings.

The enigmatic Temple of the Green Tomb can be found in Plaza A, which boasts an impressive collection of jade, jewelry, and flint artifacts.

On the other hand, Plaza B is the site of the grandest structure in Altun Ha, the Temple of Masonry Altar, which towers over 60 feet (18 meters) above the plaza.

A guided tour is available from Belize City, and many combine a visit to the ruins with other nearby activities and attractions.

Photo: Alisa Matthews/unsplash.com
Address: Rock Stone Pond, Belize
Opening hours: Mon-Sun 8am-5pm
Phone: +501 625 6976

St. John's Cathedral



Constructed during a tumultuous period when colonial powers were vying for control of what was then known as British Honduras, St. John's Cathedral was built utilizing slave labor over a duration of eight years. Despite its unassuming exterior, this small Anglican church holds a unique distinction as the sole location outside of England where British monarchs were

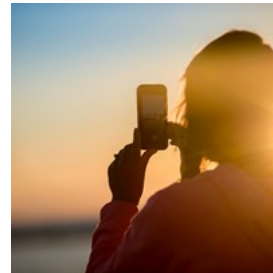
crowned. Four Indian Miskito tribe kings, who resided along the Mosquito coast, were bestowed with elaborate British ceremonial regalia that rivaled even the grandeur of London's royal ceremonies. This effort by the British was aimed at cultivating friendly relations with the tribe and safeguarding their power, land, and wealth from their Spanish rivals.

Photo: Bjørn Christian Tørrissen/cc by-sa 3.0/Wikimedia(image cropped)

Address: 86 Regent Street, Belize City, Belize

Opening hours: Sun-Fri 9am-5pm

The Belize Sign Monument



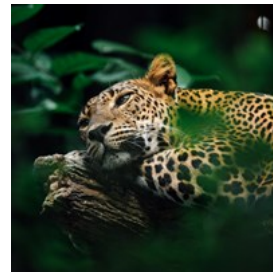
The Belize Sign Monument is located just a short distance from the Baron Bliss Lighthouse in Belize City and it's formed from big, boldly colored letters in a rounded font. It's a great spot to take stunning pictures of the ocean and relax by the seaside.

Photo: Ben White/unsplash.com

Address: Sea Shore Drive Area, Belize City, Belize

Opening hours: Open 24 hours

The Belize Zoo and Tropical Education Center



The Belize Zoo and Tropical Education Center is a unique wildlife conservation and education center located around 40 minutes from Belize City. The zoo was founded in 1983 as a last resort for animals rescued or donated from various sources, such as the film industry, government agencies, and private individuals. Today, it serves as a sanctuary for over 170 animals, including jaguars, tapirs, howler

monkeys, and scarlet macaws, all of which are native to Belize. The Belize Zoo is also an important educational institution, dedicated to promoting wildlife conservation and sustainable living practices in the region. The Tropical Education Center offers visitors a chance to learn more about Belize's diverse flora and fauna through interactive exhibits, guided tours, and educational programs for children and adults alike.

Photo: CHUTERSNAP/unsplash.com

Address: Mile 29 Western Highway, La Democracia, Belize

Opening hours: Mon-Sat 8:30am-5pm, Sun 8:30am-4:30pm

Phone: +501 613 4966

Internet: www.belizezoo.org

Email: info@belizezoo.org

Baron Bliss Light



Baron Bliss Light is a lighthouse that was built in 1885 and named after Henry Edward Ernest Victor Bliss, also known as Baron Bliss, a British philanthropist and benefactor of Belize. The lighthouse stands at the end of a breakwater and marks the entrance to Belize City's harbor. It is an iconic landmark and an important navigational aid for ships entering and leaving the harbor. Baron Bliss Light is also a popular tourist attraction, offering spectacular views of the Caribbean Sea and the city skyline.

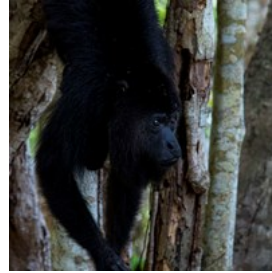
Photo: Leonid Andronov/shutterstock

Address: 4 Fort Street, Belize City, Belize

Opening hours: Open 24 hours

Phone: +501 628 9932

Community Baboon Sanctuary



Community Baboon Sanctuary's primary objective is preserving and safeguarding the black howler monkeys of Belize. Spanning over an area of 18 square miles (29 square kilometers) in the heart of the jungle, the sanctuary is home to approximately 1,500 monkeys along with a diverse range of other fauna including anteaters, armadillos, iguanas, turtles, deer, and more than 200 species of birds. A lot of tours and tourist experiences are available for the Community Baboon Sanctuary.

Photo: Robin Canfield/unsplash

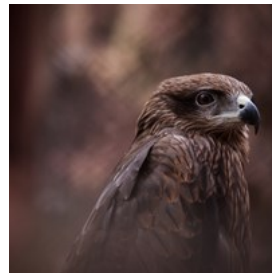
Address: Bermudian Landing Road, Bermudian Landing, Belize

Opening hours: Daily 8am-5pm

Phone: +501 633 1748

Internet: www.howlermonkey.org

Crooked Tree Wildlife Sanctuary



Since its inception in 1984, Crooked Tree Wildlife Sanctuary has been recognized as one of the most exceptional locations in Central America for observing birds. The sanctuary is constructed on a system of lagoons, swamps, and estuaries, and it serves as a natural habitat for a vast variety of indigenous and migrant avian species, such as the boat-billed heron, black-collared hawk, pygmy kingfisher, and rufous-tailed jacamars.

Photo: Mousum De/unsplash.com

Address: Crooked Tree, Belize

Lighthouse Reef

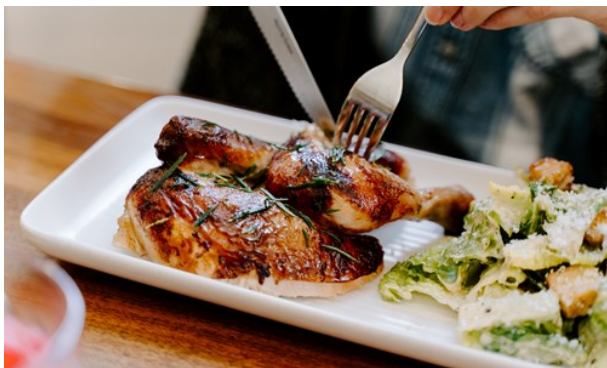


Positioned at the easternmost end of the Belize Barrier Reef, Lighthouse Reef is an atoll situated in the Caribbean Sea along with two other atolls, Turneffe Atoll and Glover's Reef. Approximately 80 kilometers (50 miles) southeast of Belize City, the Lighthouse Reef is perfectly positioned to offer a stunning view of the Caribbean Sea. Whether you prefer to explore independently or with a guide, you can immerse yourself in the lively coral reef ecosystem and observe its diverse fauna, including Caribbean reef sharks, blacktip sharks, barracudas, stingrays, turtles, and an abundance of other fish.

Photo: Tim Sheerman-Chase/cc by 2.0/Wikimedia(image cropped)

Address: Lighthouse Reef, Belize

RESTAURANTS



Angela Bailey/unsplash.com

Belize City is a melting pot of various cultures and influences. As a result, the city's food scene is a mix of Caribbean, Mexican, and Mayan flavors. The city is replete with excellent places to sample the local cuisine, including dishes such as rice and beans, fry jacks, garnachas, conch fritters, and much more!

The Tavern



The Tavern is a bistro-style restaurant in the heart of town, with a riverside deck and an air-conditioned restaurant area, which is anchored by an English pub-style bar at its center serving up a range of refreshing drinks to complement your meal. Its menu features an assortment of delicious options such as burgers, seafood, steak, or pasta dishes. At The Tavern, you can sample Belikin, a popular local beer. With its crisp and refreshing taste, it's the perfect way to cool off on a hot day.

Photo: Creative Headline/unsplash.com

Address: 2 Mapp Street, Belize City, Belize

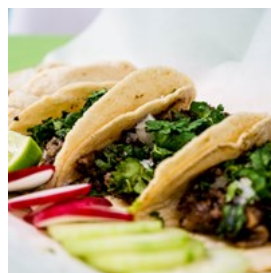
Opening hours: Mon-Thu 11am-11pm, Fri & Sat 11am-midnight

Phone: +501 223 5640

Internet: www.thetavern.bz

Email: customerservice@bowen.bz

The Wet Lizard



The Wet Lizard is a vibrant restaurant located in the heart of Belize City. With a casual and laid-back atmosphere, the establishment is known for its delicious cocktails and fresh seafood dishes, including ceviche and grilled lobster. The outdoor seating area provides a beautiful view of the Caribbean Sea and is perfect for enjoying a drink or a meal with friends or family. It also offers live music and entertainment, making it a popular spot for locals and tourists alike.

Photo: Tai's Captures/unsplash.com

Address: 1 Fort Street, Belize City, Belize

Opening hours: Mon-Thu 8am-4:30pm

Phone: +501 620 5933

Email: thewetlizard@hotmail.com

Midtown Restaurant & Bar



Midtown Restaurant & Bar is a contemporary dining establishment situated in the heart of Belize City. With an inviting ambiance, the

restaurant offers an extensive menu of international cuisine, including Caribbean-inspired dishes, seafood, pasta, and steak. Guests can enjoy their meals in the comfortable indoor seating area or on the outdoor patio. The bar serves a variety of handcrafted cocktails, wines, and beers, making it a great place to unwind with friends or family after a long day.

Photo: Joy Real/unsplash.com

Address: 168 Newtown Barrack, Belize City, Belize

Opening hours: Daily 11am-11am

Phone: +501 203 3000

Internet: www.midtownbelize.com

Celebrity Restaurant & Bar



Situated at the corner of Marine Parade and Goal Lane, Celebrity Restaurant & Bar is ideally located near the Tourism Village and

within walking distance of downtown Belize City. The restaurant prides itself on its diverse menu, with 3 chefs from different continents working together to create new cultural dishes each month. Celebrity Restaurant & Bar caters to a range of dietary requirements, including vegetarian, vegan, and gluten-free options, using only the highest quality ingredients from top brands.

Photo: Ilya Mashkov/unsplash.com

Address: Marine Parade Boulevard, Volta Building, Belize City, Belize

Opening hours: Daily 11am-11pm

Phone: +501 223 7272

Internet: www.celebritybelize.com

Email: admin@celebritybelize.com

Bird's Isle Restaurant



Bird's Isle Restaurant is a popular dining destination located in Belize City, known for its waterfront location and delicious seafood dishes.

Established in the early 1960s, the restaurant has a long history of serving locals and tourists alike. The menu features a range of seafood dishes, including shrimp, lobster, and fish, as well as other Belizean specialties such as rice and beans, stewed chicken, and plantains. With its picturesque location overlooking the sea and the city, Bird's Isle Restaurant provides a serene and relaxing atmosphere for diners to enjoy their meals.

Photo: Jasmin Schreiber/unsplash.com

Address: 90 Albert Street, Belize City, Belize

Opening hours: Mon-Wed 11am-3pm, Thu-Sat 11am-9pm, Sun noon-4pm

Phone: +501 207 6500

CAFÉS & BARS



Eiliv Aceron/unsplash.com

In Belize City, there is a wide variety of cafés and bars to suit all tastes and preferences. If you're in the mood for a relaxing breakfast, there are numerous cafés offering delicious coffee and an array of pastries. On the other hand, if you prefer beer and a lively atmosphere, there are plenty of bars where you can spend an enjoyable evening with your friends!

Le Petit Café



Le Petit Café is a charming French-style café located on the ground floor of a historic colonial building. The café boasts a cozy and

intimate atmosphere, perfect for enjoying a quiet coffee or a bite to eat. The menu features a range of French-inspired dishes, including croissants, quiches, and crepes. The café is also known for its delicious coffee, which is made with locally sourced beans and roasted on-site. The location is also a popular spot for local artists and musicians.

Photo: Yehor Milohrodskyi/unsplash.com

Address: 2 Marine Parade Cork Street, Belize City, Belize

Opening hours: Daily 6am-5pm

Phone: +501 614 5500

Internet: www.lepetitcafebelize.business.site

Spoonaz Photo Cafe and Bar



Spoonaz is a popular hangout spot known for its unique concept that combines photography and dining, making it a popular destination for locals and tourists alike. The walls are adorned with stunning photos taken by local photographers, which gives the space a warm and welcoming feel. The café offers a wide range of delicious food and drinks, including breakfast, lunch, and dinner options.

Photo: Jiroe (Matia Rengel)/unsplash.com

Address: 89 North Front Street, Belize City Belize

Opening hours: Mon-Thu 6:30am-6:30pm, Fri & Sat 6:30am-8pm, Sun 6:30am-3:30pm

Phone: +501 223 1043

Email: spooners@btl.net

Cork Street Whiskey



Cork Street Whiskey is a popular whiskey bar located a stone's throw from the Baron Bliss lighthouse. It is known for its extensive selection of whiskeys from around the world, ranging from well-known brands to rare and hard-to-find bottles. In addition to whiskey, the bar also offers a selection of craft beers, wines, and cocktails. Its menu features a mix of small plates and bar snacks, with some of the standout dishes being their whiskey-glazed wings and truffle fries.

Photo: Dylan de Jonge/unsplash.com

Address: 19 Cork Street, Belize City, Belize

Opening hours: Tue-Thu 11am-11pm, Fri & Sat noon-11pm

Phone: +501 621 6313

Internet: www.corkstreet.bz

Email: rez@corkstreet.bz

The Living Room



Housed in a charming colonial-style home, The Living Room is an elegant and cozy café located in the heart of downtown Belize City. It offers a

range of delectable options to satisfy your cravings, whether you're in the mood for an iced or hot coffee, a tasty samosa, or a variety of sandwiches. The café also boasts an impressive wine selection, and you can pair your favorite vintages with a delightful cheese platter.

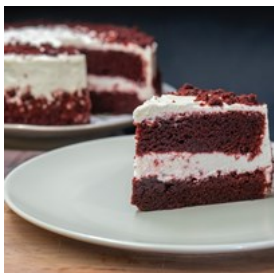
Photo: Herson Rodriguez/unsplash.com

Address: Phillip Goldson Highway, Belize City, Belize

Opening hours: Mon-Wed 8am-5pm, Thu & Fri 8am-7pm

Phone: +501 223 4156

Pandora Cafe



Pandora Cafe is a charming café known for its delicious coffee, pastries, and light bites, as well as its warm and inviting atmosphere. The

café's interior design is simple yet stylish, with rustic wooden tables and chairs and colorful artwork adorning the walls. The menu at Pandora Cafe offers a variety of coffee drinks, teas, and smoothies, as well as a selection of freshly baked pastries and light bites such as sandwiches and salads.

Photo: amirali mirhashemian/unsplash.com

Address: 2136 Saint Thomas Street, Belize City, Belize

Opening hours: Mon-Sat 11am-8pm, Sun 1pm-8pm

Phone: +501 223 5816

Email: pandoracafe-bz@outlook.com

SHOPPING



Marcus Loke/unsplash.com

The shopping scene in Belize City offers a unique blend of local and international products, with something to suit every taste and budget. For those interested in local products and crafts, there are several markets and shops that offer handmade goods, such as jewelry, art, and textiles. These products often reflect the country's rich cultural heritage and are made using traditional techniques and materials.

Down Town Plaza



Down Town Plaza is a popular shopping and entertainment destination located in the heart of Belize City. It is a bustling hub of activity,

with a variety of stores, restaurants, and services that cater to both locals and tourists. The plaza offers a mix of local and international brands, with everything from clothing and accessories to electronics and home goods.

Photo: Mediamodifier/unsplash.com

Address: 17 Albert Street, Belize City, Belize

Opening hours: Mon-Sat 7am-7pm

Phone: +501 614 1720

Kaj Expressions



Kaj Expressions is a creative shop and studio known for its handmade jewelry, art, and other unique gifts that are inspired by the vibrant

and colorful culture of Belize. The shop offers a variety of products that are made by local artisans, including necklaces, bracelets, earrings, and other accessories. Each piece is handcrafted using a variety of materials such as beads, shells, and stones, making them one-of-a-kind.

Photo: Alex Chambers/unsplash.com

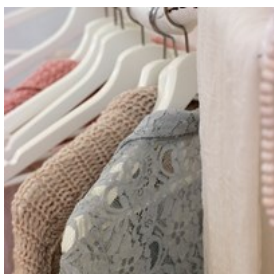
Address: 56 Eve Street, Belize City, Belize

Opening hours: Mon-Sat 10am-6pm

Phone: +501 615 9162

Internet: www.kajexpressions.com

Pink Boutique



Pink Boutique is a trendy clothing store that offers a variety of stylish clothing and accessories for women, ranging from casual wear to dressy

outfits. The selection of clothing includes a mix of local and international brands, with options for every budget and style preference. The shop also offers a range of accessories, including jewelry, handbags, and sunglasses.

Photo: micheile henderson/unsplash.com

Address: 148, North Front Street, Belize City, Belize

Opening hours: Mon-Sat 9am-7pm

Phone: +501 223 0776

Internet: www.pinkboutiquebelize.com

Email: pinkboutiquebzonline@gmail.com

Becky's Gift Shop



Discover the unique and diverse selection of gifts at Becky's Gift Shop, where you can find something for every member of your family.

From perfumes and beauty products to jewelry, toys, kitchen utensils, home decor, phone accessories, and tech gadgets, there is truly something for everyone! With Ms. Becky's wealth of experience and personalized recommendations, shopping at Becky's Gift Shop is like having your very own personal shopper.

Photo: Oxana Melis/unsplash.com

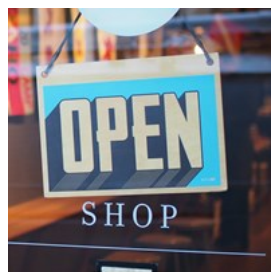
Address: Beside Brothers Habet, 92 Eve Street, Belize City, Belize

Opening hours: Mon-Sat 9am-6pm

Phone: +501 223 1436

Internet: www.beckys-gift-shop.business.site

The It Store



Located in the heart of Belize City, the It Store is a big outlet where you can find a large variety of quality clothes at low prices. T-shirts, dresses, and a lot of accessories are available in this big

shop near the ocean. As a tourist that needed to grab something last minute, The It Store represents the perfect opportunity while you're walking around the area.

Photo: Mike Petrucc/unsplash.com

Address: 1 Queen Street, Belize City, Belize

Opening hours: Mon-Sat 9am-7pm

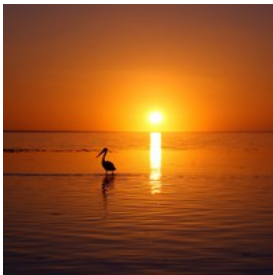
Phone: +501 223 1552

TOURIST INFORMATION



Thea/unsplash.com

Best Time To Visit



The best time to visit Belize City depends on your preferences and the activities you plan to do during your trip.

Generally, the peak tourist season in Belize City is from December to April, which is the dry season with relatively mild temperatures and low humidity.

However, if you prefer to avoid the crowds and get better deals on accommodation and activities, you may want to consider visiting during the shoulder season from May to June or November.

If you don't mind some rain, you can also consider visiting during the off-season from July to October, it can still be a great time to visit for those who want to experience the lush green landscape and take advantage of lower prices on accommodations and activities.

Photo: Seb Mooze/unsplash.com

Passport

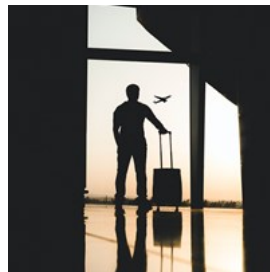


For foreign visitors, a valid passport is required for entry into Belize. Additionally, if you are traveling or transiting through Belize may need

to obtain a Belize entry visa. The visa grants permission to enter Belize and remain in the country legally for up to 30 days starting from the date of entry. However, if you plan to stay for a longer period than 30 days, you will have to visit an Immigration Office to request an extension of your stay. If you are unsure whether or not you need to apply for a visa, we recommend contacting the embassy or consulate in your country.

Photo: ConvertKit/unsplash.com

Philip S.W. Goldson International Airport (BZE)



The main international airport serving Belize City is the Philip S.W. Goldson International Airport (BZE). The airport is located in Ladyville, about 10 miles (16 km) north of Belize City, and serves as the primary gateway to Belize for international travelers.

The Philip S.W. Goldson International Airport is a modern facility that offers a range of services and amenities for travelers; it also has a number of airlines operating flights to and from various international destinations, including the United States, Canada, Mexico, and several Central American and Caribbean countries.

There are primarily two ways to reach Belize City from the Philip Goldson International

Airport: by taking a taxi cab or by booking a shuttle transfer.

Photo: yousef alfuhi/unsplash.com

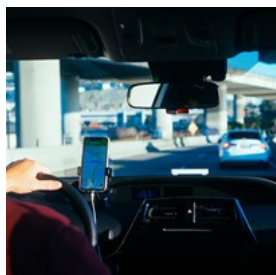
Address: International Airport Road, Ladyville, Belize

Phone: +501 225 2045

Internet: www.pgiabelize.com

Email: bacc@pgiabelize.com

Taxi



Taxi fares in Belize City are regulated by the Belize City Council, and the fares are standardized based on the distance traveled. To

hail a taxi in Belize City, you can simply flag one down on the street or ask your hotel or restaurant to call one for you. Taxis in Belize City are typically small cars or vans that can accommodate up to 4 passengers, and they are often painted in bright colors with the word "taxi" displayed prominently on the side.

Below are a couple of taxi services in Belize City:

Five Star

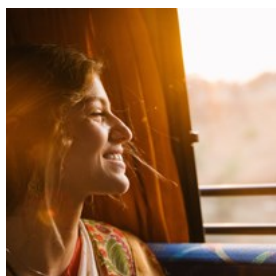
+501 624 6897

Belize Paradise Shuttles

+501 621 9845

Photo: Paul Hanaoka/unsplash.com

Public Transport



Buses are a common and affordable mode of transportation in Belize City, and there are several private bus companies that operate in

the city and throughout the country.

The main bus companies in Belize City are the Belize Bus Owners Cooperative (BBOC) and the Belize Transit System (BTS). These companies operate a fleet of small, minivan-style buses that are painted in bright colors and typically seat around 10-15 passengers.

Other bus companies in the city include:

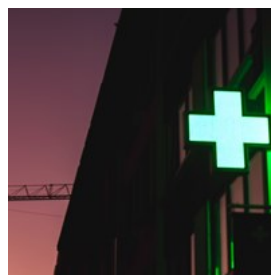
James Bus Line: This is one of the oldest and most popular bus companies in Belize. They operate a large fleet of buses that serve various routes throughout the city and the country.

Westline Bus Company: This is another popular bus company in Belize City, and they offer services to various destinations throughout the country.

Belize Shuttle: This is a newer bus company that primarily offers shuttle services to and from the airport, as well as other popular tourist destinations in Belize.

Photo: Church of the King/unsplash.com

Pharmacy



There are several pharmacies located throughout Belize City that offer a range of prescription and over-the-counter medications, as well as health and wellness products.

One of the main pharmacies in the area is MK Pharmacy, located near the city center.

Photo: Serkan Yildiz/unsplash.com

Address: 15 6th Street, Belize City, Belize

Destination: Belize City

Opening hours: Mon-Sat 9am-9pm

Phone: +501 223 0855

Website: www.travelbelize.org

Electricity



Electricity in Belize City operates on a 110-120 volt, 60 Hz electrical system, which is the same as in the United States and Canada. The

electrical outlets in Belize City are the same as those used in the United States, with two flat, parallel prongs.

Photo: [Clint Patterson/unsplash.com](https://unsplash.com/photos/Clint-Patterson)

Post



The main post office in Belize City is Belize Post Office. This post office serves as the central hub for mail and package delivery throughout

Belize and offers a range of postal services to both residents and visitors.

Photo: [Maksym Kaharlytskyi/unsplash.com](https://unsplash.com/photos/Maksym-Kaharlytskyi)

Address: North Front Street, Belize City, Belize

Opening hours: Mon-Thu 8am-4pm, Fri 8am-3:30pm

Phone: +501 227 5844

Population

57,169 (2023)

Currency

Belize Dollar (BZD)

Newspapers

Amandala - <https://amandala.com.bz/news/>

The Reporter - www.thereporter.bz

Emergency numbers

Police: 911 | 227 22 22

Fire & Ambulance: 90

Tourist information

Belize Tourism Board

64 Regent Street, Belize City

Opening hours: Mon-Thu 8am-5pm, Fri & Sat 8am-4pm

Tel: +11 501 227 2420

Information is subject to change. Please contact your Lifestyle Consultant for the most up-to-date recommendations.