



Christmas Island

in collaboration with Christmas Island Tourism Association (CITA)

Photo: Christmas Island Tourism Association



Christmas Island Tourism Association



Christmas Island Tourism Association



Raphael Bick/unsplash

Rising majestically from the tropical depths of the vast Indian Ocean, and surrounded by the azure waters of Asia's southern fringe lies a stunning natural wonder — Christmas Island! Its name alone is intriguing and stirs interest. This tiny island in the Indian Ocean is a truly fascinating paradise, inviting you to uncover its remarkable surprises of nature in a one-of-a-kind environment. Venture to this awe-inspiring island for an unforgettable getaway.

Featured



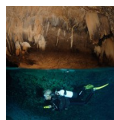
Flying Fish Cove

The best shore dive on Christmas Island, if not the best shore dive in Austr...



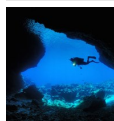
Rhoda Wall

For pelagic enthusiasts, Rhoda Wall is where the magic happens. From your di...



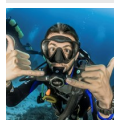
Thundercliff Cave

The unique geography of Christmas Island lends itself to underwater caves an...



West White Beach Cave

West White Beach Cave, another cave that honeycombs the limestone cliffs of ...



Eidsvold Wreck

The Eidsvold was previously a Norwegian phosphatase ship but was struck by a a...

Top 5



The Dales

The Dales is one of the Island's iconic sites and one of the few places with...



Scuba Diving

Christmas Island's narrow reef supports bountiful marine life, including 88 ...



Dolly Beach

If you could draw an almost perfect Robinson Crusoe style beach, Dolly would...



Bird & Nature Week

Once a year, generally in the first week of September, Bird & Nature week pa...



Fishing

On the world map of fishing locations, Christmas Island may only rate a smal...

THE ISLAND



Christmas Island Tourism Association

The capital of Christmas Island is known as "The Settlement". For many island residents, life centres around Flying Fish Cove, its port, jetty and the towering presence of the loading dock and buildings owned by Christmas Island Phosphates.

Christmas Island may be governed by Australia, but its rich history and cultural tapestry are influenced by its colonial past and the diverse communities that have settled here. The island is a blend of small, distinct communities, each with its unique character. To fully appreciate the cultural differences and shared heritage across these towns, take the time to explore them on foot. Walking tours are the best way to uncover the historical sites and local stories.

Despite its European colonial background, Christmas Island is one of the world's most multicultural places. Its population includes people from Singapore, China, Malaysia, Indonesia, Japan, India and Indigenous Cocos Malays, who played a significant role in the island's early history. More recent arrivals include individuals from England, Wales, Italy, Switzerland and Australia. This diverse mix makes Christmas Island a true melting pot of cultures.

The cultural mixture also makes for a multifaceted holiday destination. Even though the ethnic groups tend to cluster into one town or another, it's more of a habitual stance than a political one. You can see this on festival days when all the island's residents are happy to share and enjoy each other's cultures. Whenever a holiday comes around — and there is one virtually every month — almost everyone takes part. Chinese New Year, Hari Raya and Christmas Day are events that give equal cause for celebration.

Flying Fish Cove



Flying Fish Cove is the beach to head for if you have children or want convenient facilities.

Sitting at the base of a soaring semicircle of jungle-clad walls, this natural harbour is a perfect swimming spot, neatly dissected by the island's main jetty.

A grassy promenade sits above the narrow stretch of sand and pebbles. There are benches and gazebos for shade, fresh water showers and public barbecues. These are completely free, but the etiquette is clear: if you use them — please, clean up.

Photo: TravellingFatman/shutterstock

TOP 10



Christmas Island Tourism Association

Christmas Island is a nature-lover's dream. You'll be spoilt for choice when it comes to the huge range of nature-based activities available. Perhaps you'll need more than one trip!

Whether you are visiting to witness the magic of the red crab migration, discover the huge robber crabs that inhabit the rainforest, dive with whale sharks, relax on deserted beaches, or photograph a Golden Bosun in its regal flight, knowing what to expect ensures you get the best out of your escape.

The Dales



The Dales is one of the Island's iconic sites and one of the few places with permanent flowing water and stunning wet areas, providing significant

habitat for endemic blue crabs and impressive stands of Tahitian chestnut trees. The drive through the Dales leads through rainforest to a scenic and tranquil area, which has two walking trails starting from the Dales 4WD car park.

The first trail is mostly a boardwalk, leading to Hugh's Dale Waterfall, about 1 kilometre each way from the car park. Signage along the trail offers information on the island's plants and

animals. For the adventurous, the second trail leads on from Hugh's Dale for about 800 metres to Anderson's Dale, a small gorge with a stream that flows to the sea.

Photo: William Patino/Christmas Island Tourism Association
Internet:

parksaustralia.gov.au/christmas/discover/highlights/the-dales

Scuba Diving



Christmas Island's narrow reef supports bountiful marine life, including 88 coral species and more than 600 species of fish. It's an

underwater wonderland for divers, with clear warm waters, coral reefs and spectacular wall dives. Soft corals, feather stars and gorgonian corals grow along vast walls which plunge into a seemingly bottomless abyss.

The fish community is distinctive because the island is a meeting place for Indian and Pacific Ocean fish species. It's one of the few locations in the world where you'll see Indian and Pacific Ocean fish swimming side by side. Some of these species interbreed to produce hybrids. Christmas Island has more hybrid fish than anywhere else in the world, making it a marine hybridisation zone of international significance.

In addition to the hundreds of species of tropical fish, dolphins inhabit the island's waters and whale sharks regularly visit during the wet season. Whale sharks generally first appear when the red crabs are spawning at the start of the wet season — they converge to supplement their plankton diet with crab larvae. Locations like Flying Fish Cove, Ethel Beach, Dolly Beach, West White Beach and Winifred Beach offer scuba divers and snorkellers a rewarding marine

experience. At Flying Fish Cove and Ethel Beach shore diving is possible depending on the time of the year. There is excellent fishing, with sailfish, tuna and wahoo among some of the fish to be caught. You'll find boat ramps at Flying Fish Cove and Ethel Beach.

Photo: Christmas Island Tourism Association
Internet: www.christmas.net.au/snorkelling

Dolly Beach



If you could draw an almost perfect Robinson Crusoe style beach, Dolly would definitely be a contender. Natural food supplies, shelter, and a source of fresh water would keep most castaways happy, and this beach has been known to do just that. As you arrive, especially if you are the first person of the day, you may be drawn to the turtle tracks in the sand. You can follow them until you find the signs of a nest. Both hawksbill and green turtles have been spotted.

At the northern end of the beach, the hills are marked by fantastic rock formations with plenty of resident seabirds. More interesting, though, are the sea-level rock pools. Waves crash over the golden-toned, stony reef edges, which doesn't discourage marine life. Red algae and small hard corals paint different colours across the surfaces, while small fish dart about between the pools. Tiny moray eels hunt in ankle-deep water, and if you stay still they will swim up to you.

The opposing end of the beach has slightly deeper pools to explore. Depending on the tides, these allow safe, shallow swimming. Going over the rocks to the sea isn't advised, as currents can

be strong.

Photo: Christmas Island Tourism Association
Internet: parksaustralia.gov.au/christmas/do/beaches/dolly-beach

Bird & Nature Week



Once a year, generally in the first week of September, Bird & Nature week participants will be invited in small groups to help catch

Abbott's Boobies high in the rainforest canopy, assist to colour-band Brown Boobies and monitor their colonies on the remote and secluded rocky coasts.

Participants will work with our internationally renowned guides to study the nesting biology and foraging ecology of Christmas Island Frigatebirds and Red-tailed Tropicbirds. Depending on interest and demand, there will also be opportunities to assist in the colour-banding of Christmas Island Goshawks, a Christmas Island Hawk-Owl survey, seabird identification workshops, territory mapping of Island Thrushes and closer looks at the island's other wildlife.

Nightly pre-dinner seminars will showcase the results of all the seabird research, the status of the endemic landbirds, the rarities of Christmas Island, and the marine and terrestrial ecology of the island.

Photo: Christmas Island Tourism Association
Internet: www.indianoceanexperiences.com.au/packages/bird-and-nature-week

Fishing



On the world map of fishing locations, Christmas Island may only rate a small dot, however fish being caught here are making a

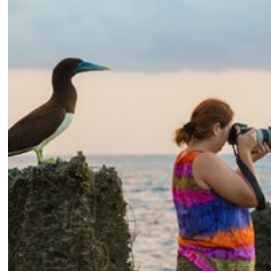
big mark amongst the international fishing fraternity. The secret is out! Anglers around the world are starting to find out that Christmas Island is the hottest new spot for big fish in South East Asia.

Within a few hundred metres of the boat launching facilities, it is possible to fish in thousands of metres of water for Sailfish, Tuna, Wahoo and all the other exciting species that you usually find in tropical locations. The difference is that on Christmas Island the fish are BIG, very BIG.

When the ocean currents bring the tuna in, it is possible to see fish in excess of 100 kilograms feeding on the surface. While the Yellowfin Tuna roam and pass the island quite regularly, Dogtooth Tuna live permanently on the steep drop-offs that surround Christmas Island. Some of them grow to be over 80 kilograms. If you prefer the high flying aerial displays of a sailfish, during the pre-monsoon months some of the biggest Sailfish in the world are to be found around Christmas Island. Even trolling within a few hundred metres of the shoreline you will find the razor gang. Wahoo are the fastest fish in the world and Christmas Island is their favourite racetrack.

Photo: Christmas Island Tourism Association
Internet: www.christmas.net.au/fishing

Photography



It's hard to imagine a more visually tantalising place to photograph than Christmas Island. All around you are sights, colours, textures and

landscapes you'll want to capture, so bring nature to life through your lens. From soft, pastel sunrises to glorious sunsets, Christmas Island is bathed in ever-changing tropical light. Vivid colour is everywhere, from the crabs' rich reds to the rainforest's deep greens, to turquoise waters. Catch the robber crabs on film, zoom in on gentle orchids and twisting vines, and train your lens skywards to capture the elegance and freedom of rare birds in flight.

Underwater photographers have a kaleidoscope of colours and shapes to shoot. On land, the imposing, inspiring and detailed architecture of temples and other built forms keeps the shutters clicking.

Videos capture the sights and sounds of millions of scurrying red crabs, or the hauntingly musical call of the island's thrush, and the stirring call to prayer from the mosque.

Best spots for best shots:

- Martin Point, for staggeringly beautiful sunsets and seabirds;
- Blowholes capture the energy of the water on a rugged coastline;
- Dolly Beach has impressively large robber crabs plus turtle tracks;
- Hughes Dale Waterfall is an iconic island place for your unique shot;
- Blowholes Road lets you get creative with a special tree along the road;

- Greta Beach hosts nesting turtles all year round;
- Island temples boast rich colours fused with wisps of incense smoke;
- Tai Jin House invites you to capture the detail of this building and its gardens;
- Flying Fish Cove is a must for underwater photography.

Photo: Christmas Island Tourism Association
Internet: www.christmas.net.au/photography

Christmas Island Golf Course



Golf is one of the favourite pastimes of Islanders and the Golf Course is well worth a try for professional golfers or first timers. The 9-hole golf course is situated amongst palm trees and tropical rainforest with a magnificent view of the Indian Ocean. Clubs are available for hire from the Christmas Island Visitor's Centre and visitors are most welcome. Christmas Island Frigates nest inland from the course and land crabs can be a local hazard.

Photo: Christmas Island Tourism Association
Internet: www.christmasislandgolfclub.com
Email: christmasislandgolf@gmail.com

Red Crab Migration



Tens of millions of red land crabs live on Christmas Island. They are the Island's keystone species, because they play a vital role recycling nutrients and shaping and maintaining the structure of the rainforest.

At the beginning of the wet season (usually in

October/November), most adult Red Crabs suddenly begin their spectacular migration from the forest to the coast, to breed and release eggs into the sea. Breeding is usually synchronised island wide. The rains provide moist overcast conditions for crabs to make their long and difficult journey to the sea. The timing of the migration breeding sequence is also linked to the phases of the moon, so that eggs may be released by the female Red Crabs into the sea precisely at the turn of the high tide during the last quarter of the moon. It is thought that this occurs at this time because there is the least difference between high and low tides. The sea level at the base of the cliffs and on the beaches, where the females release their eggs, at this time varies the least for a longer period, and it is therefore safer for the females approaching the water's edge to release their eggs. Sometimes there are earlier and later migrations of smaller numbers of crabs, but all migrations retain this same lunar rhythm.

The main migration commences on the plateau and can last up to 18 days. Masses of crabs gather into broad "streams" as they move toward the coast, climbing down high inland cliff faces, and over or around all obstacles in their way, following routes used year after year for both downward and return migrations. Movement peaks in the early morning and late afternoons when it is cooler and there is more shade. If caught in open areas, in unshaded heat, the crabs soon lose vital body moisture and die.

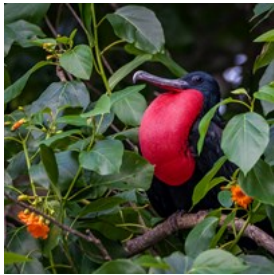
The crabs will migrate to the coast, where the males will dig mating burrows and they will mate. After mating, the males will commence their return migration. The females will brood their eggs for 12-13 days before emerging from the burrows to commence spawning. The females

will commence their return migration immediately after spawning.

The eggs hatch into free swimming larvae immediately after they are dropped into the sea. The larvae grow through several stages in the ocean for over four weeks before emerging from the sea to become tiny crabs.

Photo: Christmas Island Tourism Association
Internet: www.christmas.net.au/red-crab-migration

Birdwatching



Christmas Island is one of the world's truly spectacular tropical seabird rookeries. It's not just the number and variety of seabirds or their magnificent splendour that make the island so remarkable, but also their sheer visibility.

Around 80,000 seabirds nest here annually, with 23 breeding or resident species. Birds can be seen and heard everywhere on the island, at just about any time of the day. With just a little effort, birdwatchers can easily tick off a full list of residents in a busy week or a more relaxed fortnight. However, the elusive Christmas Island hawk owl keeps many coming back.

More than 100 vagrant and migratory bird species have been recorded here, including eight breeding seabird species and one subspecies. The most numerous is the wide-ranging red-footed booby, which nests in colonies in trees in many parts of the coastal shore terraces. You may see the endangered Christmas Island frigatebird soaring above Settlement — it's the

world's rarest frigatebird and nests only on the island. The golden form of the white-tailed tropic bird is an endemic subspecies unique to Christmas Island. Known locally as the golden bosun bird, this stunning bird is graceful in flight and has been adopted as the island's fauna emblem.

Photo: Yvonne McKenzie and Christmas Island Tourism Association
Internet: birdingtours.com.au/christmas-island-cocos-keeling-islands

Christmas Island National Park



For nature lovers, Christmas Island National Park provides fantastic opportunities to observe unique plants and animals in their natural habitats. The park covers about two thirds of the island.

As an isolated oceanic island, distant from other land masses, Christmas Island is home to a high proportion of endemic species. Several are endangered. The park protects significant ecosystems including much of the island's uniquely structured rainforests and two wetlands of international importance, the Dales and Hosnie's Springs.

In and around the national park you will find a host of native sea and forest birds, unique marine life and land crabs — including tens of millions of red crabs, famous throughout the world for their spectacular annual breeding migration.

Photo: Christmas Island Tourism Association
Internet: parksaustralia.gov.au/christmas

SCUBA DIVING



Christmas Island Tourism Association

Christmas Island's narrow fringing reef supports bountiful marine life, including 88 coral species and more than 600 species of fish. It's an underwater wonderland for divers, with clear warm waters, coral reefs and spectacular wall dives. Soft corals, feather stars and gorgonian corals grow along vast walls which plunge into a seemingly bottomless abyss.

The fish community is distinctive because the island is a meeting place for Indian and Pacific Ocean fish species - it's one of the few locations in the world where you'll see Indian and Pacific Ocean fish swimming side by side. Some of these species interbreed to produce hybrids.

Christmas Island has more hybrid fish than anywhere else in the world, making it a marine hybridisation zone of international significance.

In addition to the hundreds of species of tropical fish, dolphins inhabit the island's waters and whale sharks regularly visit during the wet season. Whale sharks generally first appear when the red crabs are spawning at the start of the wet season - they converge to supplement their plankton diet with crab larvae. Locations such as Flying Fish Cove, Ethel Beach, Dolly Beach, West White Beach, and Winifred Beach offer scuba divers and snorkellers a rewarding

marine experience. At Flying Fish Cove and Ethel Beach shore diving is possible depending on the time of the year. There is excellent fishing, with sailfish, tuna and wahoo among some of the fish to be caught. You'll find boat ramps at Flying Fish Cove and Ethel Beach.

Perpendicular Wall

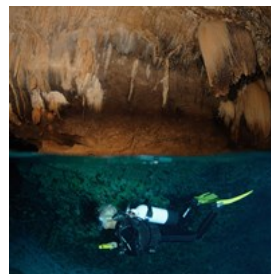


As the name of this dive site implies, here you'll find a wall that falls dramatically away to 36 metres. Before you even descend, there's a chance you'll be surrounded by friendly dolphins. After you've said hi, descend to find an overhang full of sea fans. As the wall falls away, you'll notice masses of coral stretching out to catch the passing currents. Schools upon schools of fish travel every which way, leaving you to capture playful fusiliers and columns of butterflyfish on your underwater camera. Don't forget to look out into the blue! You might be lucky enough to catch a glimpse of passing sharks and rays.

Photo: Christmas Island Tourism Association

Internet: www.diveplanit.com/dive-site/christmas-islands-perpendicular-wall

Thundercliff Cave



The unique geography of Christmas Island lends itself to underwater caves and caverns. One of these, namely Thundercliff Cave, is considered by many to be the best dive on the island when conditions are right. Outside the entrance of the underwater cave, stands a beautiful coral garden with flocks of resident batfish. Following the tunnel into the overhead environment, you'll find a cathedral-like opening

within. The subsequent room opens to the air above and connects to the remaining above-the-water passages, so leave your scuba gear and explore the interior of the cave.

Photo: Christmas Island Tourism Association

Internet: www.diveplanit.com/dive-site/thundercliff-cave

The Morgue



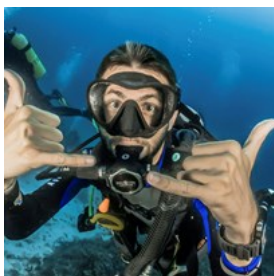
With a morbid name for such a fantastic dive site, The Morgue is home to some of the largest corals around Christmas Island.

The name itself stems from a small building on shore that previously served as the island's morgue. Today, the underwater environment is filled with a field of bommies that leads down to the most scenic area of the site at 25 metres. Searching every nook and crannie may result in some fantastic finds, such as blue ribbon eels, nudibranchs, feather stars and gilded triggers.

Photo: Christmas Island Tourism Association

Internet: www.diveplanit.com/dive-site/the-morgue

Eidsvold Wreck



The Eidsvold was previously a Norwegian phosphatase ship but was struck by a Japanese submarine during World War II. It was scuttled in

Flying Fish Cove and later transported (dragged, really) to its ultimate resting place on the other side of Smith Point. Today, half of the Eidsvold sits between 5 and 18 metres while the other half has fallen over the edge, out of the reach of recreational divers. Because of the ship's age, she is now home to coral colonies and the squadrons of colourful tropical fish that

Christmas Island is known for. The remains of the hull can be explored by wreck divers.

Photo: Sebastian Pena Lambarri/unsplash

Rhoda Wall

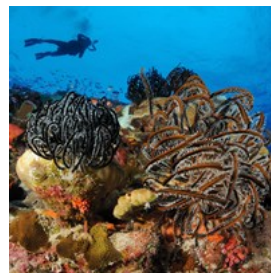


For pelagic enthusiasts, Rhoda Wall is where the magic happens. From your dive boat, you may be able to look down to 30 metres below and see circling grey reef sharks. This coral-lined wall off the northwest coast of the island gently slopes down before falling into a vertical wall at 20 metres. Fractal coral and hydrocorals host a variety of tropical reef fish, but keep your eyes on the blue. You might just get lucky and see a massive whale shark swim by!

Photo: Christmas Island Tourism Association

Internet: www.diveplanit.com/dive-site/rhoda-wall-the-whale-shark-dive

Million Dollar Bommie



With a huge variety of fish life on a single, concentrated area, Million Dollar Bommie shouldn't be skipped on any dive holiday at

Christmas Island. The bommie is about 7 metres high, growing up from a base at 26 metres. The huge fans and coral overhangs make for fantastic fish photography. You might spot Meyer's butterflyfish, pigfish, red fire goby, coral trout, damselfish, fusiliers, triggerfish and rockcod. Keeping a watch out into the blue or while jumping in with snorkels after the dive, you might get a glimpse of a majestic manta ray.

Photo: Christmas Island Tourism Association

Internet: www.diveplanit.com/dive-site/million-dollar-bommie

Flying Fish Cove



The best shore dive on Christmas Island, if not the best shore dive in Australia, Flying Fish Cove delivers with 90% of the fish species found

around the island. The dive starts from the boat ramp and works its way down to 18 metres. Corals abound in every shape and size, dotted by the magnificent colours of ornate hawkfish, blackspotted pufferfish, surgeonfish and butterflyfish. If you want an easy dive which displays the diversity of Christmas Island, Flying Fish Cove is for you.

Photo: Christmas Island Tourism Association

Internet: www.diveplanit.com/dive-site/flying-fish-cove

West White Beach Cave



West White Beach Cave, another cave that honeycombs the limestone cliffs of Christmas Island, is perfect for beginners. The

cavern opens up around 12 metres below the surface with two large entrances. Inside, a large room welcomes divers to explore the various coral formations growing on its walls, and lionfish rest under protected ledges. Look out to the open ocean for great photographs of your fellow divers silhouetted against the sunlit background. After you're done exploring the cavern, take a look at the thriving reef system just outside between 12 and 18 metres.

Photo: Christmas Island Tourism Association

Internet: www.diveplanit.com/dive-site/christmas-islands-west-white-beach-cave

RESTAURANTS & BARS



Christmas Island Tourism Association

Tastes of the Tropics — Christmas Island's restaurants showcase its rich cultural mix. From spicy Asian fare to modern western cuisine often crafted to highlight fresh, local produce, you will find something delicious to suit your taste buds.

Restaurants, cafes and pubs offer a variety of styles, from traditional grills to colonial settings to laid back, casual pub options. Many offer the chance to relax over your meal while appreciating stunning outlooks.

Take advantage of the island's many picnic and barbecue venues, and pack your own hamper with fresh, tasty supplies available at local shops.

Rumah Tinggi



Set in a 80-year-old heritage listed building, the Rumah Tinggi bar and Grill delivers hand crafted artisan foods and drinks in its tapas, cocktail and a la carte menus. Reflecting local produce the Rumah is a true tropical island haven with endless views of the Indian ocean.

Photo: Sven Mieke/unsplash

Address: 81-85 Gaze Road, Christmas Island

Opening hours: Sat 4pm-midnight

Phone: +61 407 999 390

Internet: www.christmas.net.au/rumah-tinggi

Golden Bosun Tavern



Golden Bosun Tavern, set between lush rainforest and oceanfront, offers uninterrupted views of the Indian Ocean from the bar and restaurant.

Enjoy pub favourites like parmigiana or locally caught fish in a relaxed, welcoming atmosphere.

Photo: Christmas Island Tourism Association

Address: 51 Gaze Road, Christmas Island

Opening hours: Tue-Sat 4pm-midnight, Sun 4pm-10pm, Mon closed

Phone: +61 476 674 237

Internet: www.christmas.net.au/the-golden-bosun

Flying Fish Café



Located in Flying Fish Cove, Flying Fish Cafe is a cherished family-owned food truck offering a blend of Malay and Western dishes. Known

for its good coffee and iconic roti, it's a true taste of Christmas Island.

Photo: zoryanchik/shutterstock

Address: Block 410, Unit 8, 13 Jln Pantai, Christmas Island

Phone: +61 447 609 566

SHOPPING



christmas.net.au / Christmas Island Tourism Association

Shopping on Christmas Island showcases the cultural mix that is the Island. You can pick up souvenirs, clothing, fishing gear, snorkelling equipment and general merchandise, usually at near duty free prices.

Christmas Island Visitor Centre



The friendly team at Christmas Island Visitor Centre can assist with the following: - Information service, like maps, brochures etc.; - Booking

service for accommodation, car hire and tours; - Business services, i.e. printing, scanning, laminating, facsimile sending and receiving; - Internet access with an internet café, providing computers with common business applications; - Golf club hire; - Gift shop with a wide variety of gifts, souvenirs, clothing, jewellery and books.

A lounge area is available for watching DVDs or browsing magazine articles on Christmas Island. The vicinity around the Visitor Centre is a 24/7 day wireless hotspot. Access vouchers can be purchased during business hours.

Photo: Christmas Island Tourism Association

Opening hours: Mon-Fri 8am-4pm, Sat 9am-noon, Sun

closed

Phone: +61 8 9164 8382

Internet:

www.christmas.net.au/christmas-island-visitor-centre

Email: cita@christmas.net.au

ACCOMMODATION



Christmas Island Tourism Association

Christmas Island offers a range of accommodation including boutique hotel, self contained, and lodge style. The Christmas Island National Park is also home to a state of the art luxury eco lodge. On Christmas Island, you can enjoy the personalised service that only comes with smaller operations and enjoy ocean views from many of these properties. Properties are located in Settlement and Kampong close to the ocean and also on the higher terraces. Each location and property offers something different.

Christmas Island Tourism can provide you with further information and can assist with booking an accommodation.

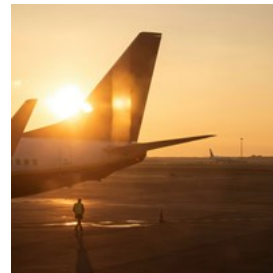
TOURIST INFORMATION



Christmas Island Tourism Association

Christmas Island is an Australian Territory, and has been since 1958. It lies in the tropical waters of the Indian Ocean, 2,600 kilometres northwest of Perth, and 500 kilometres south of Jakarta.

Airport



Virgin Australia operates two weekly flights to Christmas Island from Perth, with additional seasonal flights from Cocos (Keeling) Islands.

Altitude Airways offers flights from Jakarta to Christmas Island during each WA school holidays.

As Christmas Island is an Australian territory, passports or visas are not required. However, photo identification is required for all travellers. For children, a Medicare Card or Birth Certificate will suffice to assist with customs and immigration clearance.

Note that flights depart from the international terminal at Perth Airport. Arrive at least two hours before your flight to allow ample time for check-in.

Photo: [Angela Compagnone/unsplash](#)

Internet: www.christmasislandairport.com.au/flights

Transport



There is no public transport available on Christmas Island. Hiring a vehicle (4WD recommended) is easy and the best way to see the Islands. Scooters can also be hired. Guided tours are available and can be arranged through the Visitor Information Centre.

Photo: Robert Bye/unsplash

Taxi



Island Crabby Transport taxis operate six days of the week. Airport transfers available upon request.

Photo: Gustavo/unsplash

Opening hours: From Tuesday to Sunday

Phone: +61 439 215 644

Post



Australia Post operates a post office on Christmas Island. Mail arrives and departs the Islands once per week.

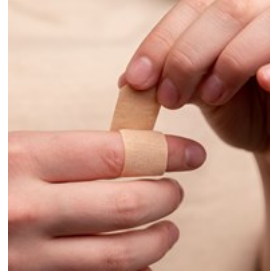
Photo: Simona Sergi/unsplash

Address: Australia Post — Christmas Island LPO

Phone: +61 8 9164 8495

Email: cipost@cipost.cx

Pharmacy



The Indian Ocean Territories Health Service offers a wide range of medical, nursing and ancillary health services. Qualified medical, nursing and ancillary health workers provide these services. The health facilities are modern and well equipped, and include accidents and emergency department, consulting rooms, laboratory, dental clinic, operating theatre, 8 inpatient beds, x-ray and ultrasound facilities. Patients requiring specialist care are assisted in their travel to Perth, and emergency cases are evacuated to Perth through the RFDS. It is important that visitors to the Island have appropriate travel insurance to cover emergency evacuation from Christmas Island. Obstetric patients are referred to Perth for delivery in Perth during the last four weeks of pregnancy. These patients and their spouses are assisted in their travel to Perth.

Routine medical services are provided free to Australian citizens & permanent residents. Private billing applies to workers' compensation, insurance examinations, etc. Dental services are available at the hospital for a scheduled fee. The dentist also operates a school dental health clinic. A voluntary St Johns Ambulance service also operates on the island.

Photo: Diana Polekhina/unsplash

Address: Indian Ocean Territories Health Service, 33 Phosphate Hill Road, Christmas Island

Internet:

shire.cc/en/your-community/medical-information.html

Telephone



WIFI hotspots can be found in several locations within the populated areas, and many accommodations may provide Wifi access. Full phone connectivity is available for both Australian mainland and international calls via the Telstra 2G network. Mobile internet data, however, is not available.

Christmas Island phone numbers can be found in the "Great Northern WA" directory, with the area code (0)8. Public telephones are accessible in various spots.

Photo: Wesley Hilario/unsplash

Electricity



Christmas Island uses the Australian standard electrical socket, which has two flat pins forming an inverted V-shape plus a vertical earthing pin.

Photo: Christmas Island Tourism Association

Population

1,692 Christmas Islanders

Currency

Christmas Island operates with Australian Dollars and is duty free. Credit cards are widely accepted by most businesses. There are no ATMs on Christmas Island and international visitors are encouraged to bring cash.

Internet

www.christmas.net.au
www.shire.gov.cx

Emergency numbers

Police, Fire & Ambulance: 000 (Triple Zero)

Tourist information

Christmas Island Visitor Centre
1 Gaze Road, Christmas Island, Shire of Christmas Island
+61 8 9164 8382
Open Mon–Fri 8am–4pm, Sat 9am–noon, Sun closed

www.christmas.net.au

Information is subject to change. Please contact your Lifestyle Consultant for the most up-to-date recommendations.