



WWS550i

Quick Start Guide

Table of Contents

Quick Start.....	2
1. Unpack.....	2
2. Charging the WWS550i.....	2
3. Setting up the Bluetooth Adapter.....	2
4. Connecting the Scanner to a Bluetooth Device.....	2
Setup & Configuration.....	6
Factory Default.....	7
Check Version.....	7
Link Quality On/Off.....	7
Set Connection.....	7
Bluetooth SPP (Bluetooth COM).....	8
Bluetooth HID (Keyboard).....	8
Start and Stop Pin.....	8-9
Terminator.....	10
iPad/iPhone Toggle Keyboard.....	10
Enable/Disable iOS Hotkeys.....	11
Secure Simple Pairing.....	11

Quick Start

1. Unpack

Open the box and remove all the pieces from their protective packaging.

2. Charging the WWS550i

You must charge the scanner for 4 hours before first using it. To charge the scanner, plug the power supply into the bottom of the scanner.

3. Setting up the Bluetooth Adapter

If you already have Bluetooth setup on your PC or device, please continue to the next step.

To setup Bluetooth on your PC, you will need to insert the Bluetooth adapter into an available USB port. Windows will detect the adapter and install the required Microsoft Bluetooth software. If Windows does not detect the Bluetooth adapter, please remove the adapter and insert the CD with the adapter's Bluetooth software on it. Follow the instructions on the CD for installing the Bluetooth software.

4. Connecting the scanner to a Bluetooth device

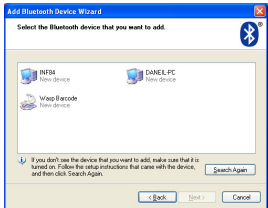
The scanner will connect to most Bluetooth devices that support HID connection.

You will need to open your Bluetooth software and search for Bluetooth devices. The Bluetooth software can be found by clicking the Bluetooth symbol on the start bar near the computer time. If the Bluetooth symbol is not found, there could be a problem with the Bluetooth adapter installation.

Windows XP Bluetooth Pairing



Check the “My device is setup and ready to be found” checkbox and click Next.



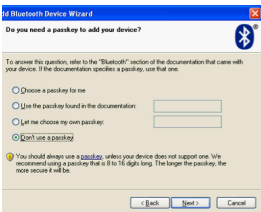
The scanner will show up in the list of Bluetooth devices found. Select Wasp Barcode and click Next.

If Wasp Barcode does not show up in the available devices, check the following:

1. Make sure the scanner is on by pressing the trigger.
2. If you are using a pre-installed Bluetooth adapter, make sure the adapter supports HID.

Scan the following three barcodes:

1. Factory Default - page 7
2. Bluetooth HID - page 8
3. Set Connection - page 7



The next step will ask you to setup a passkey for the device.

Select “Choose a passkey for me”, then click the Next button. Your passkey will appear on the resulting screen.

Scan the following barcodes found on page 9:

Note: Maintain a brisk pace when scanning these codes, as Windows provides a short time for entering them.

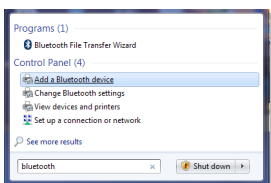
1. Start PIN
2. Each digit of the code (for code 1549 scan the barcode for 1, then the barcode for 5, etc.)
3. Enter
4. Stop PIN



The Complete Wizard screen appears. Click Finish to complete.

When the wizard is complete, the scanner will show up as a Wasp Keyboard. Click OK to close the screen. You are now ready to use the WWS550i.

Windows 7 Bluetooth Pairing



1. Click the Start icon, then type “bluetooth” in the Search field.

2. Click “Add a Bluetooth device” from the resulting menu choices.

3. Scan the following three barcodes:

- A. Factory Default - page 7
- B. Bluetooth HID - page 8
- C. Set Connection - page 7

Setup & Configuration

In order to configure Wasp WWS550i Freedom Scanner, familiarize yourself with the setup procedures on the following pages. The default settings of the scanners are identified on each page and clearly marked using an asterisk (*). The default settings have been preprogrammed for the most common barcode configurations. Use the setup & configuration barcodes only to customize the WWS550i Freedom Scanner settings. If you need to configure the Scanner, the default settings will be overwritten. All the programmed settings are stored permanently in non-volatile memory.

In order to configure Wasp WWS550i Freedom Scanner, two basic steps need to be followed:

- (1) Locate the group that contains the options to be changed.
- (2) Scan the barcode representing the option to be changed.
The scanner will sound two beeps.

Factory Default

Use the Factory Default barcode to reset the scanner to the Default settings.



Factory Default

Check Version

Scan the Check Version barcode to verify your current firmware's version number.



Check Version

Link Quality On/Off

Link Quality affects the transmission quality. When Link Quality is turned on (default setting), data transfer is more secure, but slower. If you notice that your transmissions to the host are too slow, you can try turning the Link Quality setting to off.



Link Quality On*



Link Quality Off

Set Connection

Scan this barcode to break your current connection and enable your device to connect to a new Bluetooth host.



Set Connection

Bluetooth SPP (Bluetooth COM)

The Bluetooth SPP (Serial Port Protocol) creates a virtual Bluetooth comport. This setting is not recommended. Only use this option if you have software capable of capturing data off of a comport.



Bluetooth SPP (Bluetooth COM)

Bluetooth HID

Use this setting (on by default) to pair with most Bluetooth connections. Bluetooth HID works just like a keyboard.



Bluetooth HID*

Start and Stop Pin

Use the Start and Stop Pin barcodes when you are prompted for a password (Passkey) during Bluetooth pairing. To use this setting:

1. When prompted for a password, scan the Start Pin barcode.
2. Scan the appropriate numbers (provided on page 9) for your password.
3. Scan ENTER.
4. Scan the Stop Pin barcode.

Now the Pin is set and the scanner should pair to the PC. Test the connection by scanning a barcode into WordPad, NotePad or the equivalent and verifying the scan is correct.



Start Pin



1



2



3



4



5



6



7



8



9



0



ENTER



Stop Pin

Terminator

The 'Terminator' option is used to specify the end-of-text message and is primarily used to denote the end of the barcode value.



CR *



TAB



None



Space



LF



ESC



CR + LF

iPad/iPhone Toggle Keyboard

Scan this barcode to display or hide the on-screen keyboard when connected to an iPad or iPhone.



iPad/iPhone Toggle Keyboard

Enable/Disable iOS Hotkey

Use these barcodes to enable or disable the iOS hotkey on your device. When the iOS hotkey is enabled, you can double-click the trigger to toggle the iPhone/iPad Touch Keyboard.



Enable iOS Hotkey



Disable iOS Hotkey*

Secure Simple Pairing

If you will be pairing without a pin, you should use the SSP functionality. To enable SSP, please scan the Enable SSP barcode before scanning the Bluetooth HID barcode on page 8.



Enable SSP

Wasp Barcode Technologies

1400 10th Street

Plano, TX 75074

www.waspbarcode.com