


# COLORFUL POSSIBILITIES

INDOOR & OUTDOOR LED LIGHTING

**GESCAN**  
A Sonepar Company



[WWW.GESCAN.COM](http://WWW.GESCAN.COM) • 1-877-GESCAN-1



## Bringing you more choice for CCT Selectable Fixtures

### To our valued clients:

This year's lighting promotion is about creating happier, healthier and more productive environments by using the right color temperature for indoor and outdoor spaces in residential and commercial markets. From down and strip lights, to luminaires, and back and edge lit panels, we're giving you more lighting choices that are CCT and lumen selectable.

We're also seeing more retrofit projects as changing energy codes encourage business, government and educational building owners to lower their energy consumption by replacing their existing fixtures. We've worked with our trusted partners to bring you more affordable and easy-to-install fixtures such as wide body wraps, as well as new fixtures that include dimmable and voltage-sensing technologies.


With LED technology continuing to evolve giving us more colors, more options and more control than ever before, we've got you covered for whatever you face on the job site this year.

We invite you to experience all we have to offer.

Sincerely,

Dan Haig, Gescan Lighting Expert



A young girl with long brown hair, wearing a colorful plaid shirt, is sitting at a desk in a classroom. She is smiling and has her right hand raised high in the air. In the background, other students are visible, some also with their hands raised. The image is framed by a large white diagonal line that splits the page into two main sections: a top-left section with an orange and white geometric pattern, and a bottom-right section with a dark blue and white geometric pattern.

## Find the right fixture for indoor spaces

Find indoor fixtures for your commercial job that are CCT-selectable and discover lighting products with new cutting-edge technology for added safety and energy efficiency including:

- New CCT-selectable products in key categories such as thin recessed, dimmable strip, vapour tight and designer troffers.
- A new Emergency Power Conversion module, LINK, that places the emergency lighting unit into a normal LED lighting fixture so that emergency lighting can be provided to CSA standards without interrupting the continuity of the lighting design.
- New Back Lit panels that introduce innovative ribbon technology which emits less heat, and is CCT, lumen selectable and voltage sensing (120-347v).
- New CCT-selectable recessed downlights from Acuity, Signify, Elite and Stanpro.
- New Commercial grade LED fixtures for warehouses, offices and classrooms that are now CCT selectable, lumen selectable and voltage sensing (120-347v).



**4" LED SWITCHABLE  
DOWNLIGHT, 650 LM, WHITE**



JUNWF4SWW590CRIMWM6

**6" LED SWITCHABLE  
DOWNLIGHT, 950 LM, WHITE**



JUNWF6SWW590CRIMWM6

**4" LED SWITCHABLE  
DOWNLIGHT, 650 LM, BLACK**



JUNWF4SWW590CRIMBM6

**6" LED SWITCHABLE  
DOWNLIGHT, 950 LM, BLACK**



JUNWF6SWW590CRIMBM6



5 CCT COLOUR

**4" LED REGRESSED  
SWITCHABLE DOWNLIGHT,  
650 LM**



JUNWF4REGSWW590CRIMWM6



**6" LED REGRESSED  
SWITCHABLE DOWNLIGHT,  
950 LM**



JUNWF6REGSWW590CRIMWM6



ALSO AVAILABLE  
IN 4000K

**3"/4" SMOOTH BAFFLE LED  
RECESSED DOWNLIGHT  
MODULE, 3000K**



YKL43SEMWLED30KM6



**4" SMOOTH BAFFLE LED  
RECESSED DOWNLIGHT  
MODULE, 3000K**



YKL4SEMWLED30K90CRIM6

**5"/6" SMOOTH BAFFLE  
LED RECESSED DOWNLIGHT  
MODULE, 3000K**



YKL65SEMWLED30K90CRIM6



**J6AI SMART HOME  
DOWNLIGHT STARTER KIT,  
WHITE BAFFLE**



YKLJ6AIDBI0LMWWHJBLSTRK



**J6AI SMART HOME DOWNLIGHT  
ENTERTAINMENT SYSTEM,  
WHITE BAFFLE**



YKLJ6AIDBI0LMWWHJBLENTS



**J6AI SMART HOME DOWNLIGHT  
PREMIUM ENTERTAINMENT SYSTEM,  
WHITE BAFFLE**



YKLJ6AIDBI0LMWWHJBLPENT



**PHILIPS**

120V 8.8W A-SHAPE  
LED, 800LM, 2700K,  
DIMMABLE



PHI88A19PER927PE26DIM



120V 9W A-SHAPE  
LED, 800LM, 2700K,  
NON-DIMMABLE (6-PACK)



PHI9A19LED827FRPND46FB

120V 9W A-SHAPE  
LED, 800LM, 5000K,  
NON-DIMMABLE (6-PACK)



PHI9A19LED850FRPND46FB



Philips A-shape Dimmable LED lamps are the smart LED alternative to standard incandescent. The unique lamp design provides omni-directional light with excellent dimming performance

**PHILIPS**



7W 120V 3000K 500LM PAR20  
LED SINGLE OPTIC LAMPS  
WITH AIRFLUX TECHNOLOGY



PHI7PAR20LED40830E26GLD

**PHILIPS**



50W 120V 3000K 400LM GU10  
DIMMABLE LED LAMP (3-PACK)



PHI4GU10LED930F35DIM120V

**PHILIPS**

WHILE QUANTITIES  
LAST



PAR20 8W 4000K MEDIUM BASE  
LED LAMP, COOL WHITE



PHIENDPAR208W25D4000KDIM

**LIGHTOLIER**  
by @ignify

AVAILABLE IN  
WHITE, BLACK AND  
BRUSHED NICKEL



3" MINI GIMBAL, 3000K



LCLMG3R06930NF1W

**LIGHTOLIER**  
by @ignify



3" MINI DOWNLIGHT, 3000K



LCLMD3R06930IFW

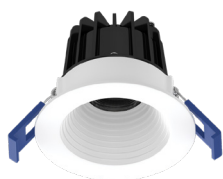




2" LED luminaire with field-changeable reflector engineered for new construction, remodel or retrofit to accommodate insulated or dropped ceilings



ALSO AVAILABLE  
IN 4000K



RL SERIES, 2" 120V ROUND  
LED FIXTURE WITH BAFFLE,  
600LM, 3000K



ELTRL275600L12030K90WH



ALSO AVAILABLE  
IN 4000K



RL SERIES, 2" ROUND LED  
FIXTURE WITH CHANGEABLE  
REFLECTOR, 3000K



ELTRL271600L3K90SHZWH



RL SERIES, 1" 120V GIMBAL  
LED FIXTURE WITH  
REFLECTOR, 360LM, 3000K



ELTRL73360L30K90MDWH



ALSO AVAILABLE  
IN BLACK



RL SERIES, 3" 120V GIMBAL  
LED FIXTURE WITH REFLECTOR,  
600LM, 3000K, WHITE



ELTRL372600L12030K90MDWH



RL SERIES, 3" 120V  
GIMBAL LED FIXTURE WITH  
REFLECTOR, 600LM, 4000K



ELTRL372600L12040K90MDWH



RL SERIES, 4"  
RECESSED GIMBAL,  
800LM, SELECT CCT



ELTRL4732800LSELECTCCTWH





RL SERIES, 3" 120V DIMMABLE ROUND  
SLIM RECESSED LED, 500LM 2700K/  
3000K/3500K/4000K/5000K, WHITE



ELTRL375500LSELECTCCTWH

RL SERIES, 5" 120V DIMMABLE ROUND  
SLIM RECESSED LED, 700LM 3000K/  
3500K/4000K/5000K, WHITE



ELTRL575700LSELECTCCTWH



RL SERIES, 4" 120V DIMMABLE ROUND  
SLIM RECESSED LED, 850LM, 2700K/  
3000K/3500K/4000K/5000K, WHITE



ELTRL475850LSELECTCCTWH

RL SERIES, 6" 120V DIMMABLE ROUND  
SLIM RECESSED LED, 1100LM 2700K/  
3000K/3500K/4000K/5000K, WHITE



ELTRL6751100LSELECTCCTWH



RL SERIES, 4" 120V DIMMABLE ROUND  
SLIM RECESSED LED, 850LM, 2700K/3000K/  
3500K/ 4000K/5000K, BLACK



ELTRL475850LSELECTCCTBK



RL SERIES, 4" 120V DIMMABLE BAFFLE ROUND  
SLIM RECESSED LED, 850LM, 2700K/3000K/  
3500K/4000K/5000K, WHITE



ELTRL479850LSELECTCCTWH



RL SERIES, 4" 120V ROUND  
REGRESSED SLIM LED,  
550LM, 3000K



ELTRL455550L3KWH



RL SERIES, 6" 120V BAFFLE  
ROUND SLIM LED FIXTURE,  
700LM, 3000K



ELTRL679700LSELECTCCTWH



RL SERIES, 4" 120V ROUND  
ADJUSTABLE SLIM LED,  
550LM, 3000K



ELTRL474550LSELECTCCTWH



**REL SERIES, 4" 120V  
ECONOMY LED RETROFIT  
LIGHTING MODULE, WHITE,  
1100LM, 2700K/3000K/  
3500K/4000K/5000K**



ELTREL437700LSELECTCTWH



**REL SERIES, 6" 120V  
ECONOMY LED RETROFIT  
LIGHTING MODULE, WHITE,  
950LM, 2700K/3000K/  
3500K/4000K/5000K**



ELTREL637950LSELECTCTWH



**RL SERIES, 4"  
120V LED SURFACE  
W/ SENSOR,  
WHITE, 600LM**



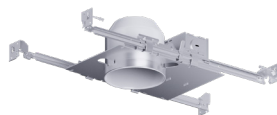
ELTRL417600L30K90WH



**RL SERIES, 4" SLIM  
SURFACE LED, 550LM  
2700K/3000K/3500K/  
4000K/5000K, WHITE**



ELTRL412550LSELECTCCTWH



**3" MINIATURE  
LINE VOLTAGE GU10  
NON-IC HOUSING**



ELTG3SGU1010WLEDIC



**4" MINIATURE NON-IC  
HOUSING, AIR-SHUT,  
WHITE BAFFLE**



ELTB4ATW



**4" MINIATURE IC  
HOUSING, AIR-SHUT,  
WHITE BAFFLE**



ELTB4ICATW



**3" GU10 REFLECTOR  
ADJUSTABLE RECESSED  
LED DOWNLIGHT, WHITE**



ELTAF1302WWH



**3" GU10 REFLECTOR  
ADJUSTABLE RECESSED  
LED DOWNLIGHT, CHROME**



ELTAF1302CLWH



**3" GU10  
RECESSED GIMBAL  
LED TRIM**



ELTAF1361WH



**4" STEPPED  
BAFFLE TRIM RING,  
WHITE**



ELTB401WWH



**5" STEPPED  
BAFFLE TRIM RING,  
WHITE**



ELTB530WWH

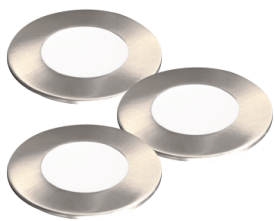


STANPRO

3" LOW VOLTAGE LED  
3-PUCK KIT, WHITE



IWAUCPKIT312V2W30KFRWH



3" LOW VOLTAGE LED  
3-PUCK KIT, BRUSHED NICKEL



IWAUCPKIT312V2W30KFRBN

3" LOW VOLTAGE LED  
3-PUCK KIT, BLACK



IWAUCPKIT312V2W30KFRBLK



STANDARD's low voltage LED puck line has a sleek and modern look. Its magnetic design allows to change the trim finish and the backplate to create a whole new look!

STANPRO



11" 15W BRUSHED NICKEL  
LED CEILING MOUNT  
LUMINAIRES, 4000K



IWACLBNI11R16WA40K

STANPRO

ALSO  
AVAILABLE  
IN 3000K



11" 15W LED CEILING  
MOUNT LUMINAIRES,  
SQUARE, 4000K



IWALEDCL1115W40KFMSQRSTD

STANPRO

ALSO AVAILABLE  
IN 3000K

11" 15W LED CEILING  
MOUNT LUMINAIRES,  
ROUND, 4000K



IWACLWH11R20WA40K



14" 25W LED CEILING  
MOUNT LUMINAIRES,  
ROUND, 4000K



IWALEDCL1425W40KFMRNDSTD

STANPRO

5" CIRKA SURFACE  
MOUNT LED FIXTURE,  
400L 3000K



STNCRK5301WH

9" CIRKA SURFACE  
MOUNT LED FIXTURE,  
1500L 3000K



STNCRK9301WH

7" CIRKA SURFACE  
MOUNT LED FIXTURE,  
1000L 3000K



STNCRK7301WH

12" CIRKA SURFACE  
MOUNT LED FIXTURE,  
2000L 3000K



STNCRK12301WH



ALSO AVAILABLE  
IN 4000K





Satco's LED Track Kit in warm white is perfect for any indoor use. It is also compatible with select dimmers available in the market today.



LED TRACK KIT - 12 WATT LED- 3000K- 36 DEGREE-  
PINCH BACK SHAPE - WHITE FINISH



SATTK413



LED TRACK KIT - 12 WATT LED- 3000K- 36 DEGREE-  
ROUND SHAPE - WHITE FINISH



SATTK403



4-PACK



A19 2700K 16000LM  
LED LAMP



SATS28789



4-PACK



A19 9.5W 3000K 800LM  
LED LAMP, DIMMABLE



SAT95A19LED830120VD4PK



6-PACK



10W 120V BR30 MEDIUM  
BASE DIMMABLE LED LAMP



SATS9022



4-PACK

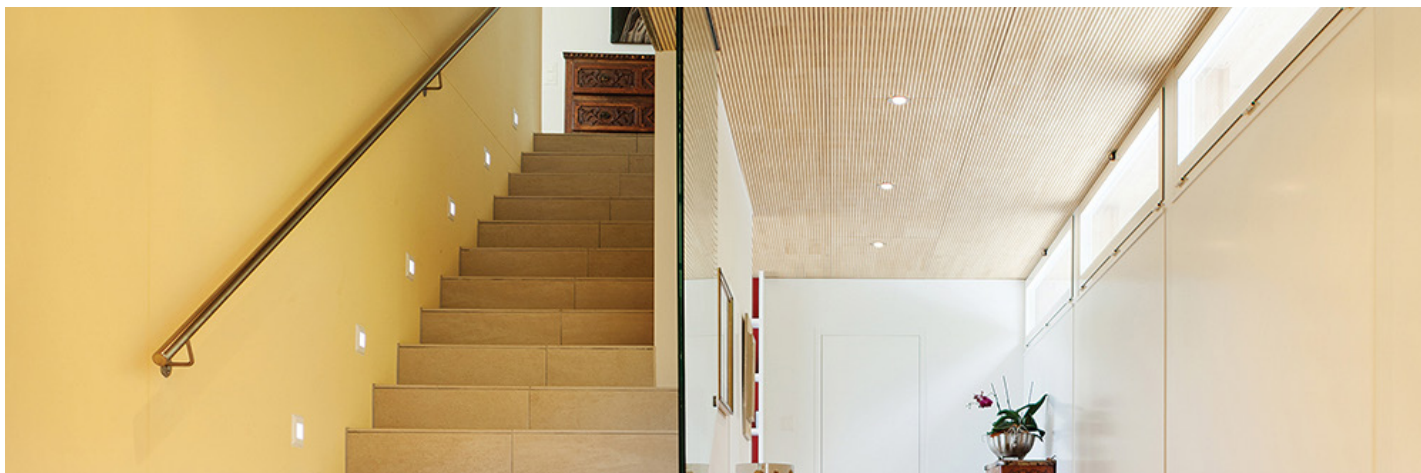


A19 15.5W 120V  
5000K LED LAMP



SATS28790





The aluminum retrofit LED panel offers the easiest and most practical solution to your existing lighting needs. For style and convenience, the removable outer trim attaches with magnetic fasteners to create a seamless look.

dals

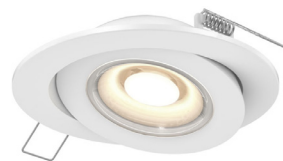
MINIMAL  
HEAT EMISSION

4" 9W 120V 3000K  
RTF4 SERIES ALUMINUM  
RETROFIT LED PANEL



DALRTF43KWH

dals

ALSO AVAILABLE  
IN BLACK

3K 700LM SWIVEL  
GIMBAL, WHITE



DALFGM43KWH

dals

WITH  
FROSTED LENS

3-PIECE LED PUCK KIT  
WITH DRIVER, WHITE



DALK4005FRWH

3-PIECE LED PUCK KIT  
WITH DRIVER, SATIN NICKEL



DALK4005FRSN

3-PIECE LED PUCK KIT  
WITH DRIVER, BLACK



DALK4005FRBK

dals



4" SMOOTH BAFFLE ROUND  
RECESSED LED, WHITE



DALRGR43KWH



Diffusion LED strips come with 3M industrial strength adhesive tape, and are dimmable with dimming power supply.

**DIFFUSION**  
by RUCROSS lighting

ALSO AVAILABLE  
IN DIFFERENT COLOR  
TEMPERATURES



**INDOOR LED  
STRIP, 3000K**



DIFSL6INI624V3000

**DIFFUSION**  
by RUCROSS lighting

ALSO AVAILABLE  
IN DIFFERENT COLOR  
TEMPERATURES

**16' 24V INDOOR SOFT  
LIGHT LED STRIP 1, 2700K**



DIFSLIINI624V2700



**16' 24V INDOOR SOFT  
LIGHT LED STRIP 1, 3000K**



DIFSLIINI624V3000

**16' 24V INDOOR SOFT  
LIGHT LED STRIP 1, 3400K**



DIFSLIINI624V3400

**DIFFUSION**  
by RUCROSS lighting

ALSO AVAILABLE  
IN DIFFERENT COLOR  
TEMPERATURES

**16' 24V INDOOR SOFT  
LIGHT LED STRIP 3, 2700K**



DIFSL3INI624V2700



**16' 24V INDOOR SOFT  
LIGHT LED STRIP 3, 3000K**



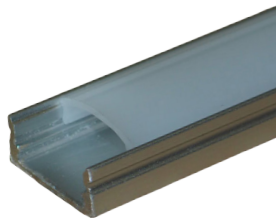
DIFSL3INI624V3000

**16' 24V INDOOR SOFT  
LIGHT LED STRIP 3, 3400K**



DIFSL3INI624V3400

**DIFFUSION**  
by RUCROSS lighting



**8' LOW PROFILE ANODIZED  
ALUMINUM CHANNEL**



DIFSLC002S

**DIFFUSION**  
by RUCROSS lighting



**45° ANGLED LINEAR  
LED CHANNEL**



DIFSLC007S

**DIFFUSION**  
by RUCROSS lighting



**8' RECESSED LINEAR  
LED CHANNEL**



DIFSLC003R





24W TRIAC  
DIMMABLE DRIVER



DIFDLED02424W



LED MAGNETIC DRIVER,  
40W, 24VDC



DIFML40S24DC



24VDC 30W DIMMABLE LED  
DRIVER, TRIAC/0-10V DIMMER



DIFDLMULTI-024-30W



24VDC 60W DIMMABLE LED  
DRIVER, TRIAC/0-10V DIMMER



DIFDLMULTI-024-60W



24VDC 100W DIMMABLE LED  
DRIVER, TRIAC/0-10V DIMMER



DIFDLMULTI-024-100W



24VDC 150W DIMMABLE LED  
DRIVER, TRIAC/0-10V DIMMER



DIFDLMULTI-024-150W



24VDC 200W DIMMABLE LED  
DRIVER, TRIAC/0-10V DIMMER



DIFDLMULTI-024-200W



24VDC 300W DIMMABLE LED  
DRIVER, TRIAC/0-10V DIMMER



DIFDLMULTI-024-300W



Flexible LED Tape combines style and technology with reliability. Designed for professional installations that demand a high level of quality.

### **GMLighting**

**FLEXIBLE 24V LED LINEAR RIBBON, 16.4FT REEL, 3500K, HIGH OUTPUT**



GMLLTP24V3W35K16



**FLEXIBLE 24V LED LINEAR RIBBON, 16.4FT REEL, 3500K, STANDARD OUTPUT**



GMLLTP24V15W35K16

**FLEXIBLE 24V LED LINEAR RIBBON, 16.4FT REEL, 2700K, STANDARD OUTPUT**



GMLLTP24V15W27K16

### **GMLighting**

**4' ALUMINUM CHANNEL FOR FLEXIBLE LED LINEAR RIBBON**



GMLLEDCHL



**8' ALUMINUM CHANNEL FOR FLEXIBLE LED LINEAR RIBBON**



GMLLEDCHL8

### **GMLighting**

**15W 12VDC DIMMABLE ELECTRONIC POWER SUPPLY**



GMLPSD1512



**24W 12VDC DIMMABLE ELECTRONIC POWER SUPPLY**



GMLPSD2412

### **GMLighting**

**24V 90W ECONOMY POWER SUPPLY**



GMLPSD9024



## MOST POPULAR WIDE BODY LED WRAP



The Lithonia Lighting® FML4W LED Wraparound provides ambient lighting for surface-mount applications. Perfect for retrofit, its wide body helps cover-up the area where a fixture is being replaced. The FML4W wrap is ideal for both residential and commercial spaces, such as laundry rooms, utility rooms, kitchens, basements, stairwells, hallways, and offices.

### DETAILS

- LUMEN SELECTABLE UP TO 6,000 LM

### SHOP

48" 120V LED WRAP, 5000LM, 4000K



YKLFML4W485000LM840ZTMV

48" 120V LED WRAP, 5000LM, 3500K



YKLFML4W485000LM835ZTMV



Ideal for hallways.



Ideal for gyms.



Ideal for utility rooms.





**1X4 CPX LED FLAT PANEL,  
3500K/4000K/5000K**



YKLCPIX4ALO7SWW7UVOLTM4



**2X2 CPX LED FLAT PANEL,  
3500K/4000K/5000K**



YKLCPIX2X2ALO7SWW7M4

**2'X4' CPX LED FLAT PANEL,  
3500K/4000K/5000K**



YKLCPIX2X4ALO8SWW7M2



**JEBL LED HIGH BAY,  
24000LM, 4000K**



YKLJEBL24L40K80CRIWH



**120V 4' LED DIMMABLE STRIP,  
3000LM/4000LM/5000LM,  
3500K/4000K/5000K**



YKLCSSL48ALO3MVSWW3



**120V 8' LED DIMMABLE STRIP,  
6000LM/8000LM/10000LM,  
3500K/4000K/5000K**



YKLCSSL96ALO4MVOLTSWW3



**4" 120-277V LOW PROFILE  
LED WRAPAROUND, 4000K**



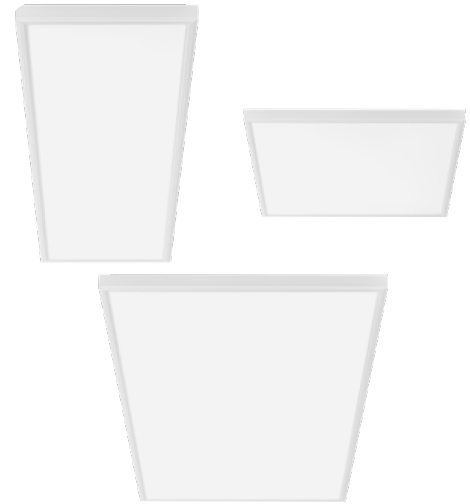
YKLFMLWL48840ZTMVOLT



The FMLWL LED Wraparound provides ambient lighting for surface-mount applications. The FMLWL wrap is ideal for both residential and commercial use; ideally in kitchens, laundry rooms, utility work spaces, stairwells, and offices.

## Edgelit LED Panel (Lumen Selectable)

The Lithonia Lighting® versatile CPANL LED Switchable Lumen Flat Panel features an integrated driver, with a rigid, deep-drawn backplate that allows CPANL to be suspended or mounted directly to a surface. Its unique, Switchable Lumen feature adds to the panel's flexibility by allowing you to choose between three lumen outputs with a simple switch. CPANL is ideal for applications such as schools, commercial office, retail and healthcare spaces.



### DETAILS

- AVAILABLE IN 1'X4', 2'X2', 2'X4'
- LUMEN SELECTABLE (20/30/40LM)

### SHOP

1'X4' CPANL LED FLAT SWITCHABLE  
LUMEN PANEL, 2400LM/3300LM/  
4400LM, 4000K



YKLCPANLX4243344LM40KM4

2'X2' CPANL LED FLAT SWITCHABLE  
LUMEN PANEL, 2400LM/3300LM/  
4400LM, 4000K



YKLCPANL2X2243344LM40KM4

2'X4' CPANL LED FLAT SWITCHABLE  
LUMEN PANEL, 4000LM/5000LM/  
6000LM, 4000K



YKLCPANL2X4405060LM40KM2

# JOT

JUST ONE TOUCH

WIRELESS, APP-FREE  
SOLUTION FOR SINGLE  
ROOM LIGHTING CONTROL



Learn more

**DESIGNED WITH CONTRACTORS IN MIND.** The SensorSwitch™ JOT enabled solution uses one-of-a-kind wireless dimming technology for an effortless way to install and pair JOT enabled lighting fixtures and controls.

Available exclusively with select SensorSwitch and Lithonia Lighting® products, we offer a broad range of JOT enabled dimmable fixtures and controls to address multiple commercial applications. This wireless technology works seamlessly for both new construction and renovation projects of single room spaces such as private offices, conference rooms and classrooms.

## JOT ENABLED PRODUCT PORTFOLIO



### Power

Install JOT enabled fixtures and controls as instructed. No 0-10V wires needed!



### Pair

Insert the pairing tool into the pinhole. Then, press and hold any button for 6 seconds. Once paired, each fixture will individually dim to 10% brightness.



### Play

Products will be fully functional once all fixtures return to 100% brightness.

## LIGHTNING SPEED INSTALLATION



Controls



Downlights



Lay-ins



Panels



Strips



Wraps



## Now Stocking JOT-Enabled Sensors

- Wireless product pairing without mobile apps and laptops
- Wall switches function with or without a neutral connection
- Occupancy and daylight sensing for code compliance
- Ideal for both new construction and renovation of small commercial spaces



**WIRELESS WALL SWITCH SENSOR  
WITH DIMMING, OCCUPANCY  
DETECTION AND DAYLIGHT  
HARVESTING, PIR/PHOTOCELL**



YKLWSXAJOTDXWH

**WIRELESS WALL SWITCH SENSOR  
WITH DIMMING, OCCUPANCY  
DETECTION AND DAYLIGHT  
HARVESTING, DUAL TECHNOLOGY**



YKLWSXAJOTPD TXWH



**WALL SWITCH  
WITH DIMMING**



YKLSPDMRAJOTDXWH



**120V 14" X 11.5" CPHB  
COMPACT PRO™ HIGH BAY,  
15000L 4000K**



YKLCPHB15LMMVOLT40K

**120V 14" X 11.5" CPHB  
COMPACT PRO™ HIGH BAY,  
15000L 5000K**



YKLCPHB15LMMVOLT50K



**120V 22.5" X 11.5" CPHB  
COMPACT PRO™ HIGH BAY,  
24000L 4000K**



YKLCPHB24LMMVOLT40K

**120V 22.5" X 11.5" CPHB  
COMPACT PRO™ HIGH BAY,  
24000L 5000K**



YKLCPHB24LMMVOLT50K





The Day-Brite / CFI HCY sealed high bay is an ideal choice where functional high bay lighting is needed with an aesthetic appeal. The round form factor lends itself to retail and institutional applications.

**Day-Brite**  
**CFI**  
by @ignify

COMING SOON



HCY SEALED HIGH BAY, 21000L, 120-347V,  
40K-50K SELECTABLE, 0-10V DIMMING



CFIHCY21L8CSTUN3DIM

**PHILIPS**

**T8 14W 3500K  
MEDIUM BASE**



PHI14T8PROLED483500IFG

**T8 14W 4000K MEDIUM  
BASE, NON-DIMMABLE**



PHI14T8PROLED484000IFG

**T8 14W 5000K  
MEDIUM BASE**



PHI14T8PROLED485000IFG

**PHILIPS**

**T8 32W 3500K MEDIUM  
BASE, WARM WHITE**



PHIF32T8TL935ALTO30PK

**T8 32W 4100K MEDIUM  
BASE, COOL WHITE**



PHIF32T8TL941ALTO30PK

**T8 32W 5000K MEDIUM  
BASE, DAYLIGHT**



PHIF32T8TL950ALTO30PK



The Lightolier Commercial retrofit Downlight DualSelect is an easy to install downlight with adjustable lumen and CCT output switch. This convenient downlight is ideal for retail store, residential and office application.

**LIGHTOLIER**  
by @ignify

**6" COMMERCIAL RETROFIT  
DOWNLIGHT DUALSELECT  
700-1500LM, 90CRI,  
0-10V DIMMING**



LCLCR6RLMCCT

**8" COMMERCIAL RETROFIT  
DOWNLIGHT DUALSELECT  
1000-2000LM, 90CRI,  
0-10V DIMMING**



LCLCR8RLMCCT





**GESCAN**  
A Sonepar Company

**LEDriver**  
*EXPRESS*



Learn more



## Commercial **LED DRIVER** Replacement Program

The LED driver replacement program allows you to replace the drivers on fixtures that are coming up on their warranty. We will program the driver for you to meet the original LED fixture application for recessed downlight, linear troffer and outdoor/industrial.

### Complete **3 EASY STEPS** for us to quote your drivers

1

**Take a picture of the original driver**  
(make sure the label of the program settings is legible)



2

**Record the driver specification information**

- Luminaire Type: Recessed, Linear, Exterior (Information from the original driver labelling will be used to pick the correct replacement and to program it correctly)
- Voltage
- Class 1 or 2
- Constant Current or Constant Voltage

- Output current setting
- Output voltage setting
- Minimum Dim level (0-10V)
- Size of Driver  
(To make sure the replacement will fit in the existing fixture)

3

**E-mail the picture and driver specification information to [GescanLEDriverExpress@gescan.com](mailto:GescanLEDriverExpress@gescan.com)** and we will match the correct replacement programmed driver for your existing fixture.



WHILE QUANTITIES LAST • PRODUCTS MAY NOT BE EXACTLY AS PICTURED • PRODUCTS MAY NOT BE AVAILABLE IN ALL LOCATIONS





The OWS multi-CCT, multi-lumen LED Vapor Tight is a wet location luminaire that withstands exposure to harsh conditions and water.

**elite**  
LED LIGHTING



**4' LED VAPOUR TIGHT LUMINAIRE,  
6000LM, 35000K/4000K/5000K**



ELT4OWSLEDSELECTCCT120V

**elite**  
LED LIGHTING

**2' X 2' 120V T-BAR, 4000LM,  
T-BAR 2700K/3000K/  
3500K/4000K/5000K**



ELT22OEVHPLEDSELECTCCT



**2' X 4' 120V T-BAR 5000LM, T-BAR  
2700K/3000K/3500K/4000K/5000K**



ELT24OEVHPLEDSELECTCCT

**elite**  
LED LIGHTING

**CB2 ARCHITECTURAL  
LED HIGH BAY,  
26000LM, 4000K**



ELTCB2LED26000L120VVD4K



**CB2 ARCHITECTURAL LED HIGH BAY,  
38000LM, 4000K**



ELTCB2LED38000L120VVD4K



The Oracle LED High Bay is designed to deliver high performance and efficiency for different applications such as warehouses, retail, walkways, roadways, campuses, facade lighting, grocery stores and other public areas.

**elite**  
LED LIGHTING

**ORHB-1 LED  
CIRCULAR HIGH BAY,  
19000 LM, 5000K**



ELTORHBILED19000L5KWD120



**ORHB-1 LED  
CIRCULAR HIGH BAY,  
26000 LM, 4000K**



ELTORHBILED26000L4KWD120

**ORHB-1 LED  
CIRCULAR HIGH BAY,  
26000 LM, 5000K**



ELTORHBILED26000L5KWD120

ABB



LUMACELL® BUILT-IN  
MICRO LED 2-HEAD LAMP  
REMOTE FIXTURE



LUMMP2BLDC

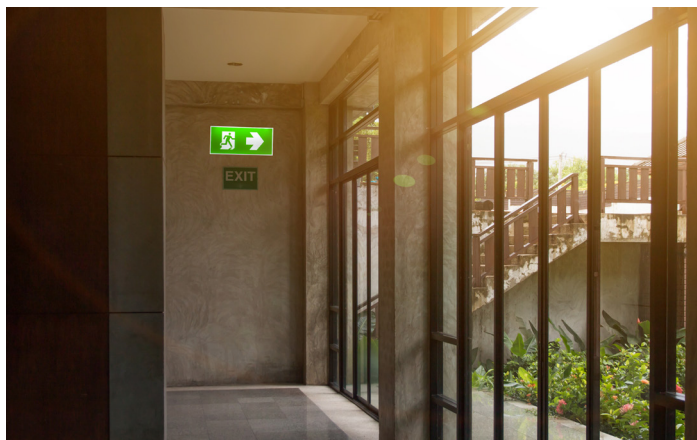
ABB



LUMACELL® 6V-27W  
BUILT-IN LED 2-HEAD  
BATTERY UNIT



LUMRGC272BLDC



Cost-effective LED emergency lighting solutions to suit cost sensitive projects. Easy to install with universal mounting and 300° head rotation.

ABB



LUMACELL® PLASTIC  
PICTOGRAM EXIT SIGN



LUMCMPSSPL

ABB



LUMACELL® 2-HEAD  
PLASTIC PICTOGRAM  
COMBINATION UNIT



LUMCMPCL

ABB



LUMACELL® ALL METAL  
PICTOGRAM EXIT SIGN,  
SELF-POWERED



LUMLS3WSC

ABB

LUMACELL® ALL-PLASTIC PICTOGRAM  
EXIT SIGN COMMERCIAL-GRADE,  
UNIVERSAL, 120-357VAC, 6-24VDC



LUMLP3WU



LUMACELL® ALL-PLASTIC PICTOGRAM  
EXIT SIGN COMMERCIAL-GRADE,  
120-347VAC, SELF-POWERED



LUMLP3WS

ABB



LUMACELL® 6V-24W  
BUILT-IN 3W LED 2-HEAD STEEL  
COMBINATION UNIT



LUMLSC24W2BLDC



The RMPN series of commercial or decorative plastic running man signs is designed using durable and lightweight high impact thermoplastic.

**STANPRO**

120/347VAC LED PLASTIC  
RUNNING MAN SIGN,  
UNIVERSAL DC  
BACKUP VOLTAGE



STNRMPN0WHUDC



120/347VAC LED PLASTIC  
RUNNING MAN SIGN,  
SELF-POWERED



STNRMPN0WHIB

**STANPRO**



120/347VAC LED  
PLASTIC COMBO  
RUNNING MAN SIGN



STNPRMPN2

**STANPRO**



6VDC 36W DOUBLE-HEAD  
LED RUNNING MAN  
COMBO EM PACK



STNPRMS2L

**STANPRO**



PAR18 DOUBLE HEAD  
LED MINI REMOTE



STNN20612V3WLJ

**STANPRO**



2-HEAD LED "EASY OUT" PLASTIC  
COMPACT BATTERY UNIT



STNSLG2L

**STANPRO**



6VDC 36W DOUBLE-HEAD  
LED EM PACK




STNSLA2L

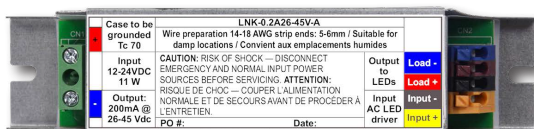


# A NEW WAY TO POWER YOUR EMERGENCY LIGHTING



 Learn more

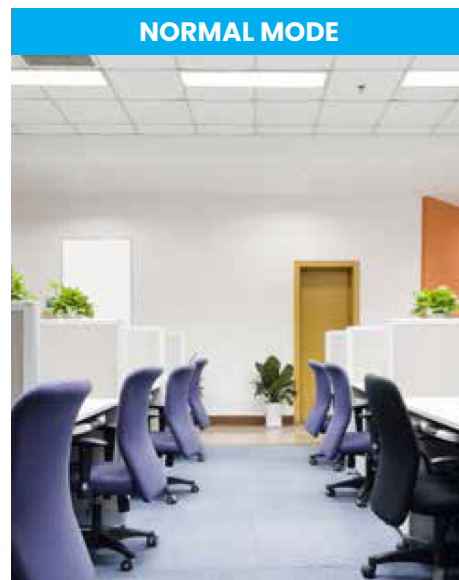
## STANPRO



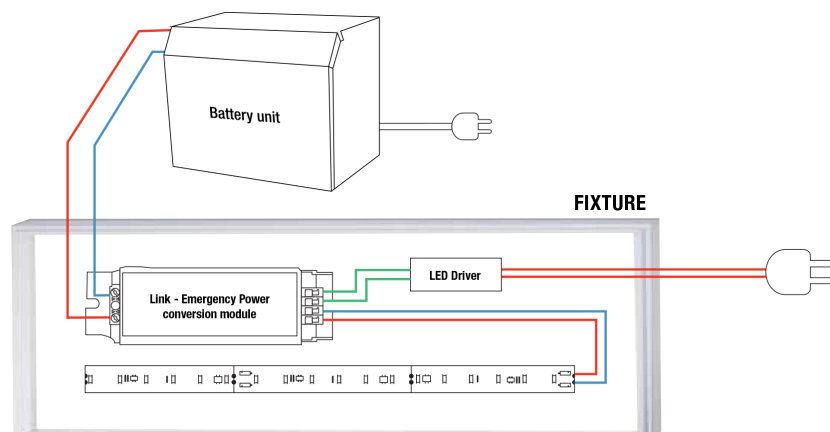
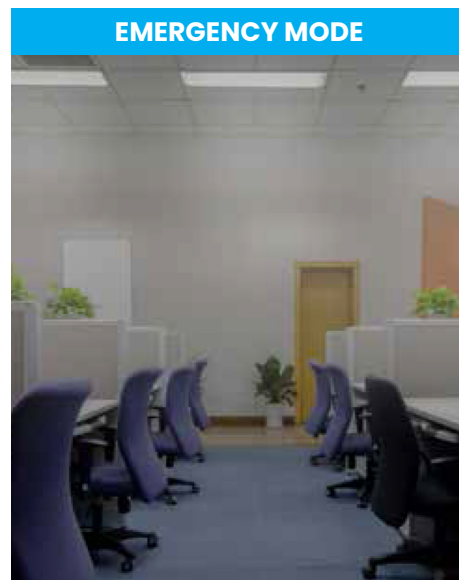
Stanpro LINK Emergency Power Conversion module was developed to eliminate conventional emergency lighting units and, simultaneously, incorporate the emergency lighting unit into the normal LED lighting fixture. This way, emergency lighting can be provided to CSA standards without interrupting the continuity of the lighting design. Added benefits include:

- The obtrusive emergency remote heads used in a traditional layout are no longer needed.
- One point of maintenance needed, as all the LINK module within the fixtures can be connected to a single battery unit.
- LINK can be connected to the same Stanpro battery unit used for remotes and signs.
- LINK is compatible with Auto-Test and Self-Diagnostics.

### NORMAL MODE



### EMERGENCY MODE



## MANY SELECTIONS AT YOUR FINGERTIPS

### Color and lumen selectable, voltage sensing LED Backlit Panels from Stanpro

L3PNB backlit panels operate from 120 V to 347 V featuring the natural benefit of projecting light through less material. The panels are capable to change CCT and power with a simple switch, an ideal cost-effective solution to reduce stocking inventory.

These commercial grade panels are the perfect replacement for fluorescent fixtures in offices, schools, and commercial buildings.



Ideal for classrooms.



Perfect replacement for fluorescent fixtures.

# STANPRO



#### DETAILS

- AVAILABLE IN 1'X4', 2'X2', 2'X4'
- CCT (COLOR) SELECTABLE (3500/4000/5000K)
- LUMEN SELECTABLE
- VOLTAGE SENSING (120-347V)

#### SHOP

##### 1'X4' LED BACKLIT PANEL



STNL3PNB1LPSQ3C

##### 2'X4' LED BACKLIT PANEL (50W, 4000K ONLY)



STNL3PNB4LPSQ3C

##### 2'X2' LED BACKLIT PANEL



STNL3PNB2LPSQ3C





## Human-Centric Lighting (HCL)

### Where Emotion Meets Illumination

Humans evolved to the rhythms of the natural light-dark cycle of day and night. And until around 200 years ago, we spent 90% of waking hours outside, enjoying natural light. With most of us now spending up to 87% of our lives indoors under constant artificial illumination, scientists have discovered that inappropriate or low-quality lighting can have a severe impact on our health and wellbeing. Effects include increased risk for obesity, depression, sleep disorders, diabetes and more.

### Human-centric approaches to LED design

As LED lighting and control systems become more affordable, a vast and expanding array of available modern light options are making creating a healthier space easier than ever. By utilizing tunable white light technology to manage brightness, colour temperature and direction of radiance, human-centric lighting (HCL) is bridging the divide between natural and artificial lighting.

A growing global market expected to reach \$3.9B by 2024, HCL is undoubtedly the next step in LED design and control. Industry leading brands like Elite, Acuity and Stanpro have already shifted from product-focused to human-centric approaches, creating diverse portfolios of CCT and lumen selectable solutions for every application. HCL design takes into account circadian rhythms, productivity, energy savings, emotional well-being and functional light quality.



## Using the right colour temperature

Educational and institutional facilities are looking for ways to take advantage of the increased human concentration, focus and productivity that better illumination provides. In schools, HCL can both calm students and keep them alert depending on time of day. Hospitals meanwhile use cooler (3,500–5000K) CCTs in staff and examination areas to keep medical personnel alert, while warmer CCTs (2,000–3,000K) in patients' rooms promote comfort, rest and recovery.

Using the correct Colour temperature (CCT) can make offices feel more natural while improving productivity and retention. A study by the University College of London showed circadian lighting played a role in improving productivity by up to 20%, making employees 38% calmer and 10% more focused.



Even retail spaces are using CCT lighting to match colour temperature with products; as cooler lights enhance overall lustre of glassware and gems and warmer colour temperatures can accentuate produce and flowers.

## More choice, more options, more control

When installing or retrofitting HCL systems it's important to consider the future and flexibility of the system. It should allow for simple scalability and configuration, as well as ease of use for users as features that aren't intuitive could actually be a deterrent.

**STANPRO**



**4' LED LINKABLE  
WRAPAROUND**



STNL2WMG48I

**STANPRO**

**HIGH LUMEN  
OPTION**



**4' 40W 5200L LED VAPOUR  
TIGHT LINEAR FIXTURE**



STNVT4LS3W40K

**STANPRO**



**TRI-LEVEL LED STRIP  
WITH LENS**



STNL2TLV48LSIQ40K



## Find the right fixture for outdoor spaces

Find outdoor fixtures for your residential or commercial job that are CCT-selectable and discover new temporary lighting solutions with:

- A new CCT-selectable smart bulb, STARFISH, that combines CCT selectable capabilities with voice-assistant technology so you can transform your outdoor spaces at home.
- New commercial grade LED wall packs from Signify for parking areas, loading areas and driveways that are CCT selectable, lumen selectable and voltage sensing.
- A new slim design of LED wall packs from Lithonia Lighting available in two sizes that are lumen selectable, and can replace up to a 250W fixture.
- New string and trouble lights for your temporary on the job site lighting needs.





**STARFISH™**

**Live Life to the Fullest**

connection   security   atmosphere   convenience   wellness

## Simple, scalable smart lighting

Add some color to your world with dynamic color changing lights for indoor and out. Accent your gardens, hang bursts of light or even set a glow of ultraviolet light around the furniture and cast a rosy tone in your living room. Inside every STARFISH lighting product is a Wi-Fi enabled chip that connects to a 1.2 encrypted cloud platform. Consumers download the free STARFISH app on their mobile devices.

- Product groupings
- Scheduling
- Automations
- Scene setting

No hub required and works with most voice technologies.

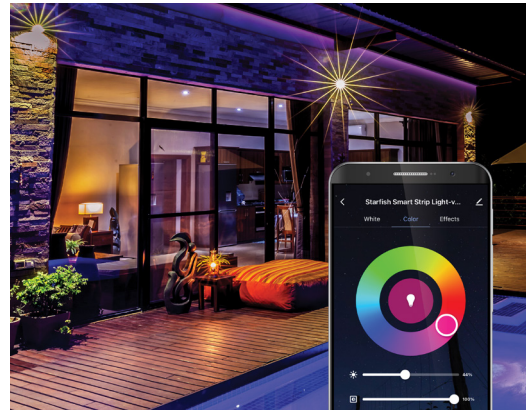
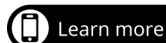


**SATCO®**

STRINGLIGHT LED 24FT 10W



SATS11272







ALSO AVAILABLE  
IN WHITE



OVWP LED WALL SCONCE,  
DARK BRONZE



YKLOVWPLED40K120PEDDBM4



4500LM CNY LED CANOPY/  
CEILING LUMINAIRE, 4000K



YKLCNYLEDPI40KMVOLTDDBM4



6500LM CNY LED CANOPY/  
CEILING LUMINAIRE, 4000K



YKLCNYLEDPI240KMVOLTDDBM4



NEW PRODUCT  
LAUNCH

TWX2 LED  
WALL LUMINAIRE,  
1450-6850LM, 4000K



YKLTWX2LEDALO40KMVDDB



TWX2 LED  
WALL LUMINAIRE,  
1450-6850LM, 5000K



YKLTWX2LEDALO50KMVDDB



NEW PRODUCT  
LAUNCH

TWX3 LED  
WALL LUMINAIRE,  
2900-11850LM, 4000K



YKLTWX3LEDALO40KMVDDB



TWX3 LED  
WALL LUMINAIRE,  
2900-11850LM, 5000K



YKLTWX3LEDALO50KMVDDB



ALSO AVAILABLE  
IN 3000K & 5000K

54W 120-277V 7300LM  
TFX1 LED FLOODLIGHT  
WITH YOKE MOUNT, 4000K



YKLTFX1LED40KYKDDDBXD



94W 120-277V 13200LM  
TFX2 LED FLOODLIGHT  
WITH YOKE MOUNT, 4000K



YKLTFX2LED40KYKDDDBXD



ALSO AVAILABLE  
IN 3000K & 5000K

188W 120-277V 25600LM  
TFX3 LED FLOODLIGHT  
WITH YOKE MOUNT, 4000K



YKLTFX3LED40KYKDDDBXD



296W 120-277V 41300LM  
TFX4 LED FLOODLIGHT  
WITH YOKE MOUNT, 4000K



YKLTFX4LED4K120VYKDDDBXD



The LED Garage and Canopy light is slim and durable with a lightweight design, and provides you with a visually appealing lighting experience.

**KEENE**

by @ignify

**WALL PACK DUALSELECT**  
30-40-60W / 30-40-50K,  
120-347V



KEWP60SCTG210BZ



**WALL PACK DUALSELECT**  
80-100W / 30-40-50K,  
120-347V



KEWP100SCTG210BZ

**KEENE**

by @ignify

COMING SOON

**GARAGE & CANOPY**  
DUALSELECT 28-40-60W /  
30-40-50K, 120-347V



KEEGC60SCTG2SM510BZ



**GARAGE & CANOPY**  
DUALSELECT 70-80-90W /  
30-40-50K, 120-347V



KEEGC90SCTG2SM510BZ

**KEENE**

by @ignify

**10W 120-277V LED**  
SLIM FLOOD, KNUCKLE/  
YOKE MOUNT



KEETF10NWGIKFL8BZ

**50W 120-277V LED**  
SLIM FLOOD, KNUCKLE/  
YOKE MOUNT



KEETF50NWGIKFL8BZ

**150W 120-277V**  
LED SLIM FLOOD,  
YOKE MOUNT



KEETF150NWGIYFL8BZ

**30W 120-277V LED**  
SLIM FLOOD, KNUCKLE/  
YOKE MOUNT



KEETF30NWGIKFL8BZ

**100W 120-277V**  
LED SLIM FLOOD,  
YOKE MOUNT



KEETF100NWGIYFL8BZ

**200W 120-277V**  
LED SLIM FLOOD,  
YOKE MOUNT



KEETF200NWGIYFL8BZ



STANPRO

LED FLOOD LIGHT, 10W,  
30K, 1063LM, 120V,  
KNUCKLE MOUNT, BLK



IWAFL10W30KKNBKCHOICESTD



LED FLOOD LIGHT, 20W,  
30K, 1803LM, 120V,  
KNUCKLE MOUNT, BLK



IWAFL20W30KKNBKCHOICESTD

STANPRO

LED FLOOD LIGHT, 30W,  
40K, 3207LM, 120V,  
KNUCKLE MOUNT, BLK



IWAFLS230W40KKNBKCHOICE



LED FLOOD LIGHT, 50W,  
40K, 5674LM, 120V,  
KNUCKLE MOUNT, BLK



STNFLS250W40KKNBKCHOICE

STANPRO

100W LED LARGE FLOOD



STNFLS3120V100W40KYKBZ

230W LED LARGE FLOOD



STNFLS3120V230W40KYKBZ



150W LED LARGE FLOOD



STNFLS3120V150W40KYKBZ

300W LED LARGE FLOOD



STNFLS3120V300W40KYKBZ

400W LED LARGE FLOOD



STNFLS3120400W40KYKBZ



Large Flood S3 luminaires provide a wide beam with a 7H x 7V distribution. Ideal for multiple applications such as signs, large building facades and general area lighting when a shorter setback is needed.





These LED security lights come equipped with a motion sensor allowing you to set the lights to turn on when motion is detected during daytime or nighttime. Easily replace traditional luminaires in yards, walkways, driveways, patios, parking lots and loading areas, while offering superior performance and savings on energy consumption.

**STANPRO**

 ALSO AVAILABLE  
IN WHITE

**LED SECURITY  
LIGHT, BRONZE**


IWAESLLS1A30KBR

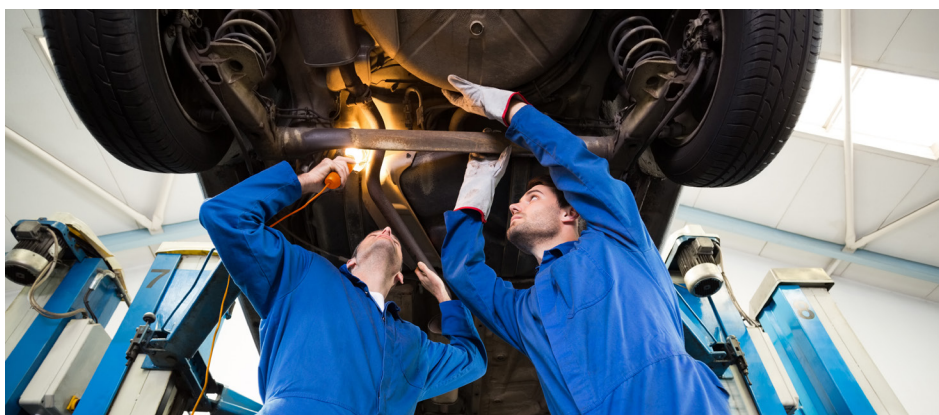


Whether you need lighting for a wide area or to perform a specific task, the String Lights from Stanpro are offered in lengths of 50' (15 m) and 100' (30 m) and are made of 12 or 14 AWG cable, which allows for them to be daisy-chained.

**STANPRO**

**100' STRING LIGHT**


STNSLI00FTDSC10SKT14AWG



The Trouble Light provides direct lighting for a smaller, specific area. It can be hung using the hook, leaving your hands free while performing a task. Multiple Trouble Lights can also be easily daisy-chained using the receptacle on the handle.

**STANPRO**

**25' TROUBLE LIGHT**


STNTL25FTDSC16AWGMETAL



**LED DIE-CAST SLIMLINE  
WALL PACK, 120V, 2700LM, 4000K**



ELTOWPSL101LED2700L4KMV



**LED WALL PACK DIMMABLE  
120V, 5000LM, 4000K**



ELTOWPFC116LED5000L4KBZ

**LED WALL PACK DIMMABLE  
120V, 8500LM, 4000K**



ELTOWPFC216LED8500LMV4K



**MEDIUM SIZE NO CUT-OFF LED  
WALL PACK, 4500LM, 5000K**



ELTOWPNC201LED4500L5K120

**MEDIUM SIZE NO CUT-OFF LED  
WALL PACK, 6000LM, 5000K**



ELTOWPNC201LED6000L5K120



**MEDIUM SIZE NO CUT-OFF LED  
WALL PACK, 12000LM, 5000K**



ELTOWPNC301LED12000L5KBZ

**MEDIUM SIZE NO CUT-OFF LED  
WALL PACK, 9000LM, 5000K**



ELTOWPNC301LED9000L5KBZ

**MEDIUM SIZE NO CUT-OFF LED  
WALL PACK, 3500LM, 4000K**



ELTOWPFC116LED3500L4KBZ



The no cut-off LED wall pack provides long lasting, energy efficient lighting with a variety of options to customize fixture performance to the required task. Keeping with the look of a traditional MH wall pack, while reducing energy consumption up to 80% and lasting over 50,000 hours. Easily mounts to building and is ideal for industrial, educational, multi-family, institutional, and government applications.



WHILE QUANTITIES LAST • PRODUCTS MAY NOT BE EXACTLY AS PICTURED • PRODUCTS MAY NOT BE AVAILABLE IN ALL LOCATIONS



# COLORFUL POSSIBILITIES

INDOOR & OUTDOOR LED LIGHTING

**GESCAN**  
A Sonepar Company



[WWW.GESCAN.COM](http://WWW.GESCAN.COM) • 1-877-GESCAN-1