

# Go Touch Free

**GESCAN**  
A Sonepar Company

**legrand®**

**sensorswitch**

**LUTRON®**



WWW.GESCAN.COM | 1-877-GESCAN-1





# We sense a change is coming

The way we live and light our spaces is evolving. Demand for scalable touch free solutions is no longer a luxury but a growing necessity.

With changing code compliance and an increasing focus on health and safety, lighting control systems are being considered as the solution to many of the problems faced by employers today.

Lighting control systems are not only good for energy savings, they're also being looked at for their contact tracing capabilities.

Recent advancements in IoT technology have made it possible to do contact tracing via smartphone apps connected to lighting control or Building Automation Systems (BAS).

Similarly, Bluetooth low energy beacons (BLE), a common device in badges or other IoT devices, can communicate with nearby lighting control devices allowing location tracking without the need for a smartphone.

Sensor technologies on the wall, in ceilings or embedded in lights will become increasingly important as employers look at contact tracing options, and for ways to limit the interaction their employees have with their switches to protect against future health threats.

## Going "touch-free" is the new normal

Electricians who take the time to learn and promote IoT-oriented devices can cultivate increased sales and recurring revenue streams as more businesses and consumers embrace its adoption.

The most determined professionals are taking a proactive stance, learning these new systems while the technology is young and easily accessible.

A unique opportunity is growing for electrical experts who design, specify, and manage lighting control systems to help employers and their employees return to the new normal as safely as possible.

Read on to learn more about scalable touch-free lighting control solutions for home and work.



# Go touch-free

Going touch-free has reached a tipping point. But with so many expanding options, where do you begin? As an electrical expert you're probably asking yourself a few questions: Is the space open or closed? Am I working with a single floor or multiple? Do users require personalization? Is saving energy a top priority?

The next few pages will provide some options for your next residential or commercial project. Starting with simple home solutions and going to more complex commercial solutions, you'll find the touch-free products that can be used by themselves, or as part of a bigger system.

From plug-ins, to switches and sensors, we're featuring products that have the cutting-edge technology to ensure you get the accuracy and reliability you need for your next job. We invite you to check out the options available to you or scan the QR code to learn more on our website.

# Hands-free plugs

## Smart Plug-In Switch

What if you could turn any outlet in any room into a hands-free solution?

This smart plug-in from Legrand can provide dimmable or on and off control of table and floor lamps using any 120V dimmable bulb.

And with no hub required, this wi-fi enabled plug-in creates a truly touchless experience through your app or your voice assistant that is now available out of the box.

Use these products to turn your lights on and off or dim the lights.

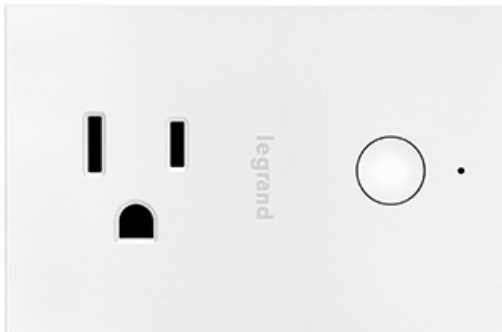


Up to 50% more  
energy efficient

### Details:

- Supports up to 1 wireless device like lamps, curling irons, fans and other small appliances
- Connects to Wi-Fi router via WPA2 Supports
- Amazon Alexa, Google Assistant and other popular control platforms

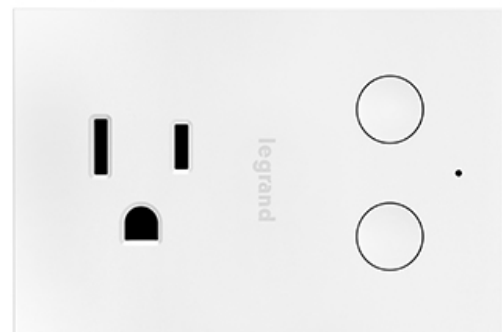
the **radiant**<sup>®</sup> collection



**legrand**  
Smart Wi-Fi  
Plug-In Switch



PASWWP10CACC2



**legrand**  
Smart Wi-Fi Tru-Universal  
Plug-In Dimmer



PASWWP20CACC2



# Hands-free switches



## Smart Switch, Wi-Fi

The Smart Tru-Universal Dimmer and Smart Switch from Legrand are wi-fi enabled switches that can control your lights. Both can be installed easily in place of an existing switch or dimmer, neutral wire required.

The smart switch operates in single pole or three-way applications, with use of any 3-way switch. The Tru-Universal Dimmer operates any 120V dimmable light or fixture.

### Details:

- Supports up to 1 wireless device or light fixture
- Connects to Wi-Fi router via WPA2
- Supports Amazon Alexa, Google Assistant and other popular control platforms



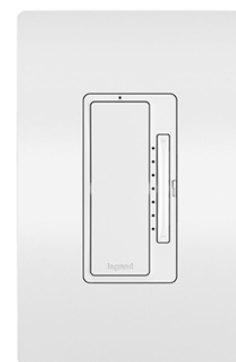
Up to 50% more  
energy efficient



**Smart Wi-Fi Switch**



PASWWRL10WHCACC2



**Smart Wi-Fi  
Tru-Universal Dimmer**



PASWWRL50WHCACC2

# Outdoor is the new indoor

## A must have for your backyard or patio

Power up to 3 outdoor lights or devices simultaneously using the Smart Outdoor Switch with GFCI from Legrand.

Plug it into an existing electrical outlet and bring a touchless solution to your next patio or garden party.

It's designed with weather resistance for use in outdoor locations and with GFCI protection for added peace of mind.

Control outdoor lights from your smart phones or tablets using the app. Or schedule lights to turn them on and off automatically using this fun outdoor wi-fi enabled plug-in.

the radiant<sup>®</sup> collection



Smart Wi-Fi Plug-In  
Outdoor Switch



PASWWP30CCV2

### Details:

- Supports up to 3 devices like lights, fountains or small appliances.
- Connects to Wi-Fi router via WPA2
- Supports Amazon Alexa, Google Assistant and other popular control platforms







**Juno**

**J6AI Smart Home Downlight  
Starter Kit, White Baffle**



YKLJ6AIDBIOLMWWHJBLSTRK



**Juno**

**J6AI Smart Home Downlight  
Entertainment System,  
White Baffle**



YKLJ6AIDBIOLMWWHJBLENTS



**Juno**

**J6AI Smart Home Downlight  
Premium Entertainment System,  
White Baffle**



YKLJ6AIDBIOLMWWHJBLPENT



## MEET JUNO AI: NEW PRODUCT LAUNCH

**Wednesday, April 7, 2021**



**Register**

With many people still working remotely and unable to holiday, they'll be looking for new and fun experiences at home. A smart home system with clean aesthetics, Juno AI is a whole smart home system providing lighting, audio and full home connectivity through Alexa. With no tabletop devices and no hub required, JUNO AI is less complicated than other smart home systems out there. Learn how easy it is to expand this system into a fully integrated smart home.

# Go touch-free

## Touch-free with the hub

To help slow the spread of germs, the CDC recommends frequently disinfecting things we touch a lot – like light switches.

But what if you could turn on the lights without touching anything at all?

Add a Smart Bridge so your customers can go touch-free by using scenes and schedules.

Use it for voice control, scheduling, scenes, geofencing, and more. And with clear Connect technology built in, it doesn't rely on Wi-Fi, so it's always fast and reliable.

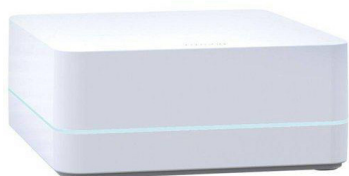


Up to 50% more  
energy efficient

### Details:

- Supports up to 50 wireless devices
- Connects to Wi-Fi router via Ethernet
- Supports Siri and Home Kit technology, and Serena, Sivoia® QS wireless shades
- Allows integration with select A/V and security systems

*Caseta*™ Wireless



**LUTRON**

**120V Smart Bridge PRO  
with HomeKit Technology**



LUTLBDGPRO2WHC



**LUTRON**

**Caseta® Wireless  
Smart Bridge PRO Kit**



LUTPBDGPROPCKG1WC



# Go hands-free

## Hands-free motion sensors

Let your body get the lights, with Lutron Caseta sensors. With hands-free control, these sensors are perfect for powder rooms, garages, laundry rooms and more – no wires required.

Better yet, Caseta works with more smart home devices than any other smart lighting control brand. And with XCT technology, it can detect fine motion 3x better than other sensors and has a 10-year battery life.



**LUTRON**  
**Caseta Wireless**  
**Motion Sensor**



LUTPDOSENSWH

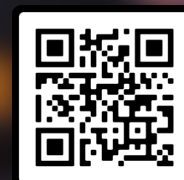
### Details:

- Passive infrared motion detection
- Compatible with smart devices and Serena Shades.
- cULus Listed, FCC, IC, IFT, RoHS Compliant
- Vacancy-only models available
- On and off option only

## Meet Caséta by Lutron. Smart Lighting At The Switch.

*Caséta* Wireless  
by **LUTRON**

Easily setup and control your home's lights, shades, temperature and Sonos rooms from anywhere with the Lutron app.



**Learn More**



### Smart Lighting Control Anywhere You Go

You can control your lights from anywhere, any time with the app.



### Regular Bulbs Made Smart

Caséta can make your existing bulbs act smart, even LEDs.



### Most Connected

Works with more devices than any other smart lighting control brand.



### Control By Voice or Touch

Control by dimmer, app, remote, or voice.



## Comparing residential systems

An at-a-glance look at the similarities and differences between Caséta and RA2 Select.

### Caséta

A wireless mini-system ideal for control in a single room, multiple rooms, smaller homes, and condos



DIY or professional installation



Contractors and homeowners are able to purchase and set up the system. Homeowners can personalize on their own.

## 2,500 ft<sup>2</sup>

One lamp dimmer can extend the range by 30 ft.

## 75 devices

including the Smart Bridge/Smart Bridge PRO



Caséta style dimmers available in four color options

Expand the system with a variety of different shade styles and fabrics, including roller, honeycomb and drapery systems.



Installer



Lutron App Setup



Wireless Coverage



System Size



Design



Shade Integration

### RA2 Select

A wireless whole home system ideal for any home and any budget.



Professional installation only



Only contractors can purchase and set up the system. Homeowners can personalize on their own.

## 5,000+ ft<sup>2</sup>

Wireless repeaters can extend the range by 2,500 ft<sup>2</sup> per repeater.

## 100 devices

including the main repeater and 4 wireless repeaters



Maestro style dimmers available in seven color options

Expand the system with a variety of different shade styles and fabrics, including roller, honeycomb and drapery systems.



Learn More

Not too big and not too small, this goldilocks lighting control system was launched by Lutron two years ago. Choose the components you need like lighting controls, fan controls, keypads, temperature controls, appliance controls and shades to create the system that best suits your client's lifestyle.



# Go hands-free



**RadioRa 2 Select Main Repeater**



LUTRRSELREP2BL



**RadioRA 2 Main Repeater**



LUTRRMAINREPWH

These products are perfect for homes that need a little bit of extra range due to things like unique layouts, or unusually dense walls. No separate Ethernet connection is needed for the hub, just plug the included power adapter into any outlet.





## Comparing residential systems

An at-a-glance look at the similarities and differences between **Ra2 Select** and **Radio RA2**

### RA2 Select

A wireless whole home system ideal for any home and any budget.



Professional installation only



Only contractors can purchase and set up the system. Homeowners can personalize on their own.

## 5,000+ ft<sup>2</sup>

Wireless repeaters can extend the range by 2,500 ft<sup>2</sup> per repeater.

## 100 devices

including the main repeater and 4 wireless repeaters



Maestro style dimmers available in seven color options

Expand the system with a variety of different shade styles and fabrics, including roller, honeycomb and drapery systems

No wireless temperature sensors



Installer



Lutron App Setup



Wireless Coverage



System Size



Design



Shade Integration



Sensors

### RadioRA 2

A wireless whole home system ideal for control of any home or light commercial project.



Professional installation only



Only contractors can purchase and setup the system. Accredited contractor required to personalize Radio RA2.

## 7,500 ft<sup>2</sup>

Wireless repeaters can extend the range by 2500 ft<sup>2</sup> per repeater. Add 30 ft. from any non-repeater device to a repeater, and 60ft. from repeater to repeater.

## 200 devices

including 2 main repeaters and 8 wireless repeaters (max)



Maestro style dimmers, GRAFIK T Style dimmers and switches, and SeeTouch keypads available

Expand the system with a variety of different styles and fabrics including roller, honeycomb and drapery systems

Add up to 5 wireless temperature sensors per link max



# Go hands-free



20-60%  
light savings



**Radio Powr Savr™ Wireless  
Occupancy/Vacancy Ceiling Sensor**



LUTLRF2OCR2BPWH



**180° Wireless Occupancy Sensor**



LUTLRF2OWLBPWH

## Hands-free with PIR Radio PowrSavr sensors

Go hands free with PIR occupancy and vacancy sensors from Lutron.

Compatible with Ra2Select and RadioRA, they've got two different mounting options for the medium to large home. Better yet, you can use them with Vive, Lutron's Commercial Lighting Control System.

With a ten year battery life and no wires, all you have to do is place it where you need it and press the button to set it up. It's never been easier to help customers personalize and automate scenes, schedules and geofencing.

They also work with load controllers using reliable Clear Connect Technology so you never have to worry about losing your connection, as it works on a radio frequency independent from Wi-Fi.

### Details:

- Compatible with Ra2 Select, RadioRA 2 and Vive
- RoHS Compliant, with exclusive XCT technology for fine motion detection
- Auto-On/Auto-Off, Auto-On Low-Light/Auto-Off, and Manual-On/Auto-Off
- Dependent occupancy groups and customizable occupied/unoccupied presets in some systems



# Simple, scalable, touchless

In the new normal, Employers will consider using sensor data to understand how their spaces are being used to make floor space optimization decisions for new modular layouts.

Whether that's one room or a floor, the hub allows for integration between devices, and their app allows you to view the data centrally to help your clients save energy, meet code compliance and help limit the interaction people have with their switches.

Programming is as easy as tuning your car radio, with patented technology that automatically selects and associates nearby wireless devices:

- PowPak wireless dimming and switching modules
- PowPak Wireless Fixture Controllers
- PowPak 20 A Relay Modules
- Maestro Wireless dimmers and switches
- Wireless Receptacle controls
- Pico remote controls
- RadioPowrSavr occupancy sensors and daylight sensors.



**LUTRON**  
Starter Vive Wireless Hub



LUTHJSOFM



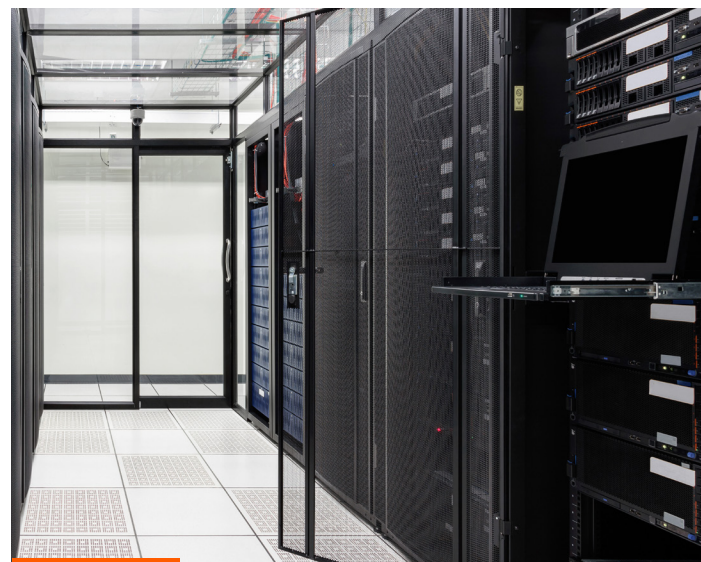
# Touchless common areas

## SOLUTION 1: USE STANDALONE SENSORS

Quick, simple, and cost effective

Install an in-wall sensor dimmer or sensor switch. Lights automatically come on when an occupant enters the space and turn off when the exit.

Perfect for small spaces such as private offices, equipment rooms, and more.



**LUTRON**  
**2A Maestro®**  
**120V Occupancy/Vacancy**  
**Sensing Switch**



LUTMSOPS2HWHC



**LUTRON**  
**600W 1-Pole Maestro®**  
**Occupancy Sensor**  
**C•L Dimmer**



LUTMSCLOPI53MWH



**LUTRON**  
**6A 120/277V Maestro®**  
**Dual Technology**  
**Sensor Switch**



LUTMSA202WH



# Add a daylight sensor

Daylight harvesting, which takes advantage of naturally available light, is a key energy-saving strategy for commercial spaces.

The principle is simple: the electric lights in a space can automatically be dimmed down or turned off when enough natural light is entering the space.

According to the U.S. Department of Energy, lighting accounts for an average of 38% of electricity usage in commercial buildings, more than any other building system.

A thoughtfully deployed daylight harvesting program for building lighting can typically deliver energy savings of 20–60%, while providing the assurance that occupants have the right amount of light in the space, while also automatically adjusting the light as daylight levels change.

Daylight sensors meet mandatory requirements for building construction and renovation and can contribute to obtaining points in several LEED credit categories.



**LUTRON**  
3V Wireless  
Daylight Sensor



LUTLRF2DCRBWH

## Details:

- RoHS Compliant with simple calibration wireless daylight sensor
- Front accessible test buttons make setup easy
- Daylight compensation through Lutron reliable open loop control



# Touchless common areas

## **SOLUTION 2 : USE LUTRON VIVE SYSTEM** **No new wiring, 10-minute installation.**

Easily pair a wireless sensor to an in-wall switch or PowPak mounted in the ceiling to make your space touchless. Set the sensor to occupancy mode and automatically turn on lights when you enter a space and turn them off when you leave. Perfect for restrooms, hallways, cafeterias, and more.



**LUTRON**  
**180° Wireless**  
**Occupancy Sensor**



LUTLRF2OWLBPWH



**LUTRON**  
**Radio Powr Savr™**  
**Wireless Occupancy/Vacancy**  
**Ceiling Sensor**



LUTLRF2OCR2BPWH



**LUTRON**  
**PowPak® Dimming Module**  
**with 0-10V Control**



LUTRMJS8TDVB





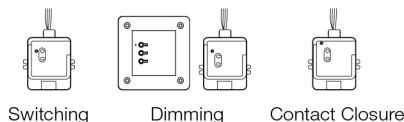
# How to Create Zone Control with a Vive System in 3 Simple Steps

## Step 1

### Choose dimming and/or switching modules

#### Options available:

- Switching, 0-10V, 347V, phase dimming, Ecosystem, contact closure



#### Installation:

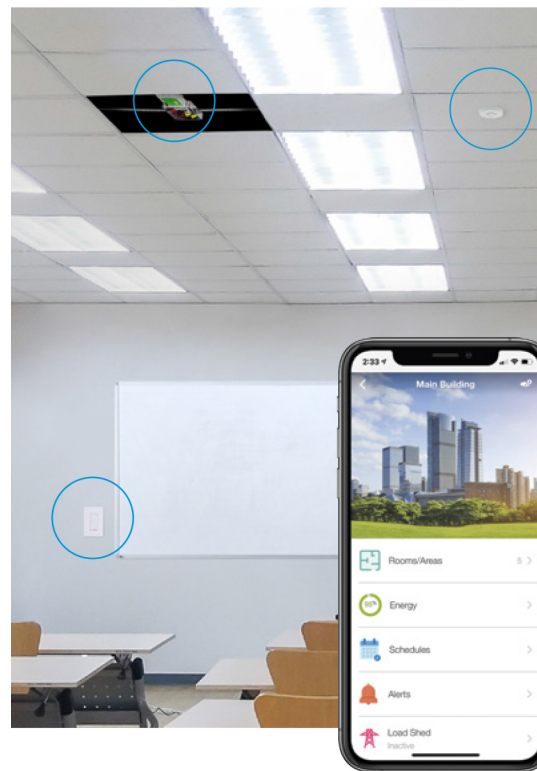
- To control a group of lights, simply wire one load controller in front of the first fixture in the zone

#### Programming:

- To pair, hold the power button on your load controller for 10 seconds to put it into listening mode
- Then press the off button on the Pico remote or the light bulb button on the occupancy sensor



0-10V Dimming Module (RMJS-8T-DV-B)



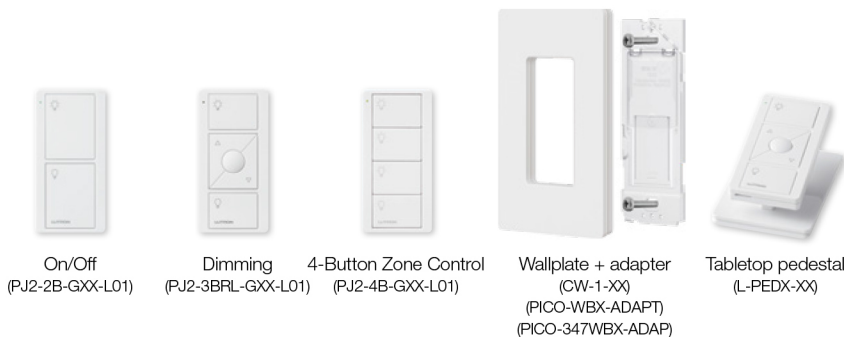
## Step 2

### Choose the right wireless remotes for your job to add personal control

#### No need to run wire for 0-10V dimming:

- Pico wirelessly pairs in 10 seconds
- Guaranteed 10-year battery life

Pico remotes sold separately



## Step 3 Add wireless sensors to your job with no wire runs

#### Simple installation for occupancy or vacancy sensing:

- Same easy, 10-second wireless pairing
- Guaranteed 10-year battery life
- You can add 10 wireless devices to one 0-10V dimming module
- Daylight sensors also available

#### Occupancy/vacancy sensors



Ceiling mount LRF2-OCR2B-P-WH



Wall mount LRF2-OWLB-P-WH

#### Daylight sensor



Ceiling mount LRF2-DCRB-WH



## Vive offers a solution for 347V

Are you running a Canadian facility and operating on 347-volt power?

Canadian facilities operating on 347-volt power now have a simple, scalable and reliable wireless solution: the Vive 347 V Dimming Module by Lutron. The new 347-volt dimming module brings the convenience and reliability of Vive wireless solutions to projects in Canada.

Vive's simplified installation allows you to connect to a Pico remote, Radio Power Saver sensor or the LutronVive hub for effortless control of a room, a floor, or an entire building. Their app allows you to view data to help your clients save energy and meet code compliance.

Learn how Vive can help you meet stringent energy codes while cutting labour and material costs on your commercial projects this year.

# Automatic motion detection

## Big places or private spaces

Using passive infrared technology, these sensors are best used in open areas where the direct line of sight can be easily determined – like factory floors, classrooms, or individual offices.

And while the PIR technology may seem simple, don't be fooled. Not all PIR sensors are the same.

These ones use cutting edge technology that make them more reliable and energy efficient. And with a lower frequency response, it delivers excellent small motion detection at a greater distance.

Each sensor is also fine-tuned for optimum detection for its coverage pattern. And with more energy-saving time delay settings, you can be sure that there will be no false offs.



Up to 50% more  
energy efficient

### Details:

- 120-277V and 347 V
- Meets Title 24, ASHRAE and IECC Energy Codes
- Includes on and off options, wall plate, and adaptive daylight harvesting
- Standard Vandal lens
- Also available in Dual Technology



**sensorswitch**

CMR 9 Series PIR  
Standard Range 360°  
Ceiling Mount Sensor



SENCMR9



**sensorswitch**

WSX Series Single Relay Wall Switch  
Occupancy Sensor with up to 20ft  
range



SENWSXWH



# WSX is available in 347V

## Bringing convenience and reliability to projects in Canada

Canadian facilities operating on 347-volt power have a reliable, touchless one-room solution: the WSX Family Wall Switch Sensors by Acuity.

The WSX Family of Wall Switch Sensors accommodates wiring to either ground or a neutral connection, which means contractors can now stock one device regardless of neutral or non-neutral code requirements.

With auto, and manual on-and-off options, the 347-volt passive infrared wall switch is perfect for building codes that require a manual option.



**sensorswitch**

**347V WSX Series Passive Infrared Wall Switch Occupancy Sensor**



SENWSX347WH

### Other Features:

- Compatible with LEDs, electronic & magnetic ballasts, CFLs and incandescents
- Programmable with SensorSwitch VLP Mobile App or traditional push button
- Mis-wire Protection – interchangeable line and load wires prevent damage to device
- Self-grounding mounting strap
- Meets NEC 2017 Section 404.2C neutral requirements (no current leakage to ground when connected to neutral)
- Aids in IECC and ASHRAE code compliance



# 'Listening' more accurately

## Why Microphonics is more accurate

Microphonics is an advanced detection technology that has been patented by Sensor Switch, Inc.

Appropriately named, it uses a microphone inside of the sensor to hear sounds that indicate occupancy. One of the great benefits of microphonics technology is its ability to distinguish the sounds made by human activity from ambient noise.

It does this through digital acoustic filtering which means it keeps noises like the television, the radio, and even the ticking of the clock from keeping the lights on unnecessarily.

It also uses less power and is acoustically passive, meaning no sound waves are transmitted into a space, eliminating all potential for interference. Which is really just a fancy way of saying it's more energy efficient than other kinds of Dual Technologies out there.

### Details:

- 120-277 V and 347V
- Meets Title 24, ASHRAE and IECC Energy Codes
- Includes on and off options, wall plate, and adaptive Daylight Harvesting
- Standard Vandal lens
- CM/CMR series available in White only.



Up to 70% more  
energy efficient



sensorswitch

120/277V CMR PDT 9 Series Dual  
Technology Standard Range 360°  
Ceiling Mount Sensor



SENCMRPDT9



sensorswitch

120/277V CMR PDT 10 Series Dual  
Technology Extended Range 360°  
Ceiling Mount Sensor



SENCMRPDT10

# Dual technology wall sensors

## Make their bottom line, and the earth happy

A reported 33.3% of respondents in a IDC D study sponsored by Acuity stated that “difficulty understanding the ROI” and “too many solutions to choose from” were two of the top challenges to selecting a connected building solution.

So here are two compelling reasons why you should choose Acuity’s Dual-Technology Sensors on your next project:

1. They’re more accurate with the least amount of false tripping which means higher energy savings.
2. They’re more reliable with less installer involvement, less frequency variations, and less interference.

Dual technology sensors that use PIR and Microphonics technology provides effective, reliable, and accurate human detection in occupancy sensors.

This means your clients could save up to 70% more energy in certain applications.

### Details:

- 120-277 V and 347 V
- Meets Title 24, ASHRAE and IECC Energy Codes
- Includes Photocell and Wall Plate and adaptive Daylight Harvesting
- Standard Vandal lens
- WV series available in white only



Up to 70% more  
energy efficient



**sensorswitch**

**120/277VAC WSX Series Dual  
Technology (PIR/Microphonics) Wall  
Switch Occupancy Sensor**



SENWSXPDTWH

**Wide View Lens**



**sensorswitch**

**12-24 VAC/VDC WV PDT 16 Series Dual  
Technology Wide View Sensor**



SENWVPDT16



# JOT

## JUST ONE TOUCH

WIRELESS, APP-FREE  
SOLUTION FOR SINGLE  
ROOM LIGHTING CONTROL

**DESIGNED WITH CONTRACTORS IN MIND** The SensorSwitch™ JOT enabled solution uses one-of-a-kind wireless dimming technology for an effortless way to install and pair JOT enabled lighting fixtures and controls.

Available exclusively with select SensorSwitch and Lithonia Lighting® products, we offer a broad range of JOT enabled dimmable fixtures and controls to address multiple commercial applications. This wireless technology works seamlessly for both new construction and renovation projects of single room spaces such as private offices, conference rooms and classrooms.

## LIGHTNING SPEED INSTALLATION



### Power

Install JOT enabled fixtures and controls as instructed. No 0-10V wires needed!



### Pair

Insert the pairing tool into the pinhole. Then, press and hold any button for 6 seconds. Once paired, each fixture will individually dim to 10% brightness.



### Play

Products will be fully functional once all fixtures return to 100% brightness.

## JOT ENABLED PRODUCT PORTFOLIO



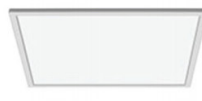
Controls



Downlights



Lay-ins



Panels



Strips



Wraps

# JOT-enabled sensors



sensor switch

**Wall Switch with Dimming**



YKLSPODMRAJOTDXWH



sensor switch

**Wireless Wall Switch Sensor  
with Dimming, Occupancy  
Detection and Daylight  
Harvesting, PIR/Photocell**

## Placing sensors in lighting controls and fixtures is the new normal

The WSXA and VERTEX are JOT wireless technologies that combine lighting controls and fixtures with sensors.

The wall switch sensor is used for room-level dimming, switching, occupancy sensing and daylight harvesting. This simple, cost-effective solution is ideal for small commercial indoor spaces that require small motion detection up to 20 ft (6.10 m) such as private offices, conference rooms and other small enclosed spaces.

The new VERTEX sensor is placed inside the lighting fixture, combining occupancy and ambient light sensor capabilities with dimming.

The VERTEX JOT controls its luminaire illumination level and communicates its occupancy/dimming state to other JOT devices within the group.

Its small physical footprint enables seamless integration into a luminaire without disrupting aesthetics or requiring additional mounting space.

**Available in 20 amp**



YKLWSXAJOTDXWH

**Available in 15 amp**



YKLWSXAJOTPDTDXWH

# JOT-enabled fixtures



2' X 2' BLC Series Center-Basket LED Troffer,  
3300L, 4000K – Wireless Room Control  
with “Just One Touch” Pairing



YKL BLC 2X233LM4KMVJOT



2' X 2' BLC Series Center-Basket LED Troffer,  
3300L, 4000K – Wireless Occupancy Sensor  
with “Just One Touch” Pairing



YKL BLC 2X233LM4KMVJOTVT15



2' X 4' BLC Series Center-Basket LED Troffer,  
3300L, 4000K – Wireless Room Control  
with “Just One Touch” Pairing



YKL BLC 2X444LM4KTMVJOT



2' X 4' BLC Series Center-Basket LED Troffer,  
3300L, 4000K – Wireless Occupancy Sensor  
with “Just One Touch” Pairing



YKL BLC 2X444LM4KMVJOTVT15





# JOT

JUST ONE TOUCH

WIRELESS, APP-FREE  
SOLUTION FOR SINGLE  
ROOM LIGHTING CONTROL

## JOT LIGHTNING SPEED INSTALLATION SEMINAR FOR ELECTRICIANS

Wednesday, April 7, 2021

The demand for alternatives to conventional switches in commercial spaces is growing as employers look to reduce common touchpoints.

Join us and Regional Sales Manager John Miller from Acuity on Wednesday, April 7, 2021 at 11:00-11:30am MST to learn how just-one-touch technology is being used to minimize the contact people have with their switches.



**Register**

You'll also get a chance to learn about JUNO AI, a whole smart home system providing lighting, audio, and full home connectivity through Alexa.

### What You'll Take Away:

- Learn how JOT can be used for single room lighting control, with no commissioning or networking
- Learn why JOT is a perfect retrofit controls solution
- Learn about the different types of JOT-enabled products
- See the new Juno A.I. product and how easy it is to expand this system into a fully integrated smart home

# Go Touch Free

March & April 2021

**GESCAN**  
A Sonepar Company



**sensorswitch**

**LUTRON**

**legrand**

WWW.GESCAN.COM | 1-877-GESCAN-1

