

GESCAN
A Sonepar Company

C  **NADIAN**
crafted

ABB SIEMENS

AcuityBrands

STANPRO



GESCAN.COM

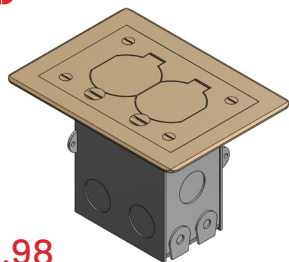
ABB Emergency Lighting R&D

Did you know a significant percentage of ABB products sold in Canada are also designed and manufactured locally? ABB's Montreal Campus is the Global Centre for Emergency Lighting Research and Development. Lumacell, Emergi-Lite and Ready-Lite, products designed and manufactured by ABB Canada, are leading brands of emergency lighting and exit signs. ABB uses the latest technologies to reduce the footprints of its product through compact product design and high-performance LED technology.



FLOOR BOXES

ABB



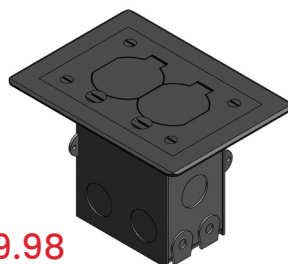
\$179.98

Steel City® Single-Gang Residential Floor Box Kit, Duplex Receptacle, Brass



TAB71WDSC

ABB



\$219.98

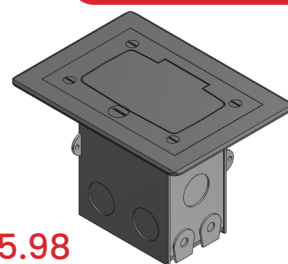
Steel City® Single-Gang Residential Floor Box Kit, Duplex Receptacle, Nickel



TAB71WDSNC

ABB

Also available in Brass



\$215.98

Steel City® Single-Gang Residential Floor Box Kit, GFCI Receptacle, Nickel



TAB71WGFCINC

ABB



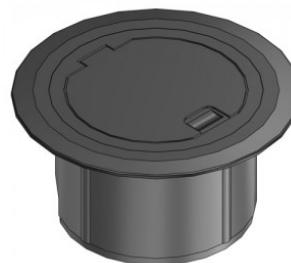
\$50.98

Steel City® Round Non-Metallic Floor Box



TAB68P

ABB



\$92.50

Steel City® Recessed Service Floor Box Cover Kit



TAB68RCSTBLK

ABB



\$2.75
Supermag® Magnetic Fitting,
Square Washer for 3/8" Bolt



TABAB24IM38EG

ABB



\$7.98
Supermag® Magnetic Fitting,
90° Angle Fitting, 4-Hole,
4-1/4"H x 3-1/2"L



TABAB205MEG

ABB

\$22.98
1/2" 0.76 Aluminum Jacketed
Metal-Clad Cable Fitting



TABST050464



\$22.98
1/2" 0.88 Aluminum Jacketed
Metal-Clad Cable Fitting



TABST050465

\$21.98
1/2" 0.65 Aluminum Jacketed
Metal-Clad Cable Fitting



TABST050462

ABB



\$1.25
Blackburn® Dual-Rated
Mechanical Connectors,
Slotted Screw, 14 AWG - 2 str.



TABADR2

ABB



\$1.15
Blackburn® Dual-Rated
Mechanical Connectors,
Slotted Screw, 14 AWG - 6 str.



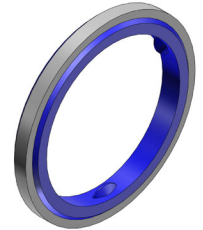
TABADR6

ABB

\$2.25
3/4" Liquidtight Sealing Gasket



TAB5263



\$3.25
1" Liquidtight Sealing Gasket



TAB5264

\$8.50
2" Liquidtight Sealing Gasket



TAB5267

ABB



\$46.98
Superstrut® Metal Framing 1-5/8" x
1-5/8" x 10' Pre-Galvanized



CSPAI20010PGC

ABB

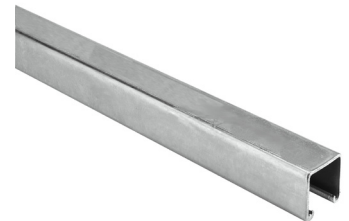


\$40.98
Superstrut® Metal Framing, Pre-Galvanized,
Half-Slotted Channel, 1-5/8"x1"



CSPDI200HS10PGC

ABB



\$72.50
Superstrut® 1-5/8 inch x 1-5/8 inch x 10 ft
12-Gauge Hot Dipped Galvanized Strut



CSPAI20010HDGC

ABB

GROUNDING



\$10.50

EZGround™ C-Taps Copper Compression Connector for Cable Range #6 Sol. - #2 Str., Tap #6 Sol. - #2 Str.



TABCTP22

\$16.98

EZGround™ C-Taps Copper Compression Connector for Cable Range #1 STR. - 2/0



TABCTP2020

ABB



\$2.25

Color-Keyed® Standard Barrel Copper Lug Connector, Blue 24, 1/4 #6 AWG



TAB54105

ABB



\$6.50

Color-Keyed® Standard Barrel Copper Lug Connector, Green 37, 1/4 #1 AWG



TAB54108

ABB



\$7.50

Color-Keyed® Straight Copper 2-Hole Lug Connector, Grey 29, 1/4 #4 AWG



TAB54854BE

ABB



\$10.50

Color-Keyed® Straight Copper 2-Hole Lug, Green 37, 1/4 #1 AWG



TAB54208

MICROELECTRIC

ABB



\$945.98

20A 600V CT-SWL Series Transformer Rated Meter Socket c/w Switch



MICCT113SWL

\$529.98

20A 600V CT-L Series Transformer Rated Meter Socket c/w Switch



MICCT113L

\$660.98

200A 600V PL27 Series Polyphase Meter Socket, Combination Overhead-Underground



MICPL27TCV

\$24.25

Pro-Blu™ 933™ Wire
Connector, Pack of 200



MAR933JAR200



\$46.98

Pro-Blu™ 933™ Wire
Connector, Pack of 400



MAR933JAR400

\$88.98

Pro-Blu™ 933™ Wire
Connector, Pack of 1000



MAR933JAR1000

ABB



MARRETTE®

ABB



\$200.98

13.40 inch x 0.27 inch Ty-Rap Nylon 6/6,
Weather-Resistant (500/Pack), Black



TABTY27MX

ABB



\$22.98

1/2 inch 0.985 Aluminum Jacketed
Metal-Clad Cable Fitting



TABST050466

ABB



\$112.98

1-1/2 inch STAR TECK Aluminum Jacketed
Metal-Clad Cable Fittings for Ordinary
Locations



TABST150472

ABB



\$85.98

Cable Tie 50LB 7" Natural Nylon



TABTY25M

ABB



\$161.98

Cable Tie 40LB 11" Natural Nylon



TABTY26M

\$259.98

Cable Tie 50LB 14" UV Black Nylon



TABTY28MX

EMERGENCY LIGHTING

EMERGI-LITE®



\$43.50

EMERGI-LITE EF9D-BLD 3W 6-12V EF9-BLD Series Double-Head
"Built-In" Micro LED Lamps Remote Fixture, White



EMREF9DBLD

EMERGI-LITE®



\$59.98

4W 12V EF9 Series Double Head
Halogen MR16 LED Lamp, White



EMREF9DMLG

EMERGI-LITE®



\$52.98

Plastic Pictogram Exit Sign,
Self-Powered



EMRCMPSSPE

EMERGI-LITE®



\$44.98

Plastic Pictogram Exit Sign,
AC only



EMRCMPSACE

EMERGI-LITE®



\$69.98

2-Head Plastic Pictogram Combination
Unit



EMRCMPCE

EMERGI-LITE®



\$86.98

Steel LED Runnign Man Pictogram Exit Sign,
Self Powered, 120-347V



EMRCMSSPE

ABB

\$1,449.98

Mini Inverter, 300W, 120/120VAC,
self-powered



EMREMI3001

\$2,299.98

Mini Inverter, 600W, 120/120VAC,
self-powered



EMREMI6001



SIEMENS METER CENTRES

Designed and built with the contractor in mind, Siemens high-quality multi-family metering includes an assortment of module types that can be configured to meet a wide range of residential, commercial or industrial group metering applications. With quality and service — the keystone of every Siemens product — Siemens meter centres are engineered and manufactured in Canada and meet all Canadian requirements.

Meter Stack Design

Uniform design with flexibility in mind, all Siemens meter stacks are developed for "cold metering" to protect the meter and electrical equipment.

Meter Stack Enclosure

Type 1 enclosure, barriers and end plates are manufactured with galvanized steel while front covers are fabricated with phosphatized steel

Bus Bar

Main horizontal bus consists of tin plated high conductivity aluminum and main cross bus is installed at the bottom of metering stacks, rated at 600A or 1200A, while the vertical bussing is rated at 800A per section.



240V Modular Meter Centres

Offering maximum versatility, Siemens 240V meter centres are designed for single-phase three wire 120/240V AC or three phase four-wire 120/208V AC applications with sub-service modules of 100A, 125A and 200A, as well as to meet CSA requirements C22.2 No.229 and are CSA certified under file #13069. All individual metering stacks are manufactured to tight specifications and can be selected in pre-assembled units to minimize on-site labour, or as a separate plug-in module for a customized installation. Modular construction offers real post-installation flexibility permitting on-site changes with minimum downtime.

600V Modular Meter Centres

With features designed to maximize productivity and minimize labour costs, Siemens 600Y/347V metering line offers an ideal solution for restricted space projects. This metering solution for 3 phase 4 wire 600Y/347V applications has been designed in Canada based on contractors' feedback.

LOADCENTRES

SIEMENS

\$749.98

100A 32/64 Circuit Panel Pack with White Door



SIEKITSEQ32100SMDW

\$925.00

200A 40/80 Circuit Panel Pack with White Door



SIEKITSEQ40200DW



SIEMENS

\$850.98

125A 32/64 Circuit Panel Pack with White Door



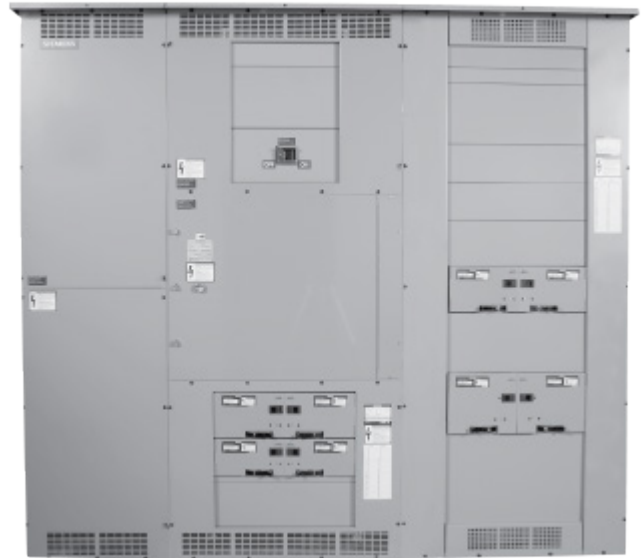
SIEKITSEQ32125SMDW



SIEMENS

Sentron® SMP Switchboard (400-1200A)

Every aspect of the SMP switchboard has been designed with the aim of improving layout convenience, reducing installation costs, and minimizing the impact and cost of system changes. Providing the space-saving construction and service flexibility necessary in systems for light industrial plants, retail strip malls, and commercial buildings, the SMP switchboard is designed for special configurations and can be equipped with incoming and outgoing cable/conduit connections, supplied with utility metering and offers a wide variety of special features.



Simplified System Design

90°C Rated Wireway

The termination temperature for main incoming cables can be sized at 90°C for bussed pull sections.

Wiring Room & Front Accessibility

Distribution sections are designed with improved wiring space and greater accessibility, as well as for easier installation and maintenance.

House a Variety of Equipment

Service entrance sections accept a wide range of Sentron Molded Case Circuit Breakers as main disconnect devices.

Front-Access Bus-Link Connections

Front accessibility to bus and protective devices makes adding or replacing circuit breakers or switches quick and easy.



SIEMENS

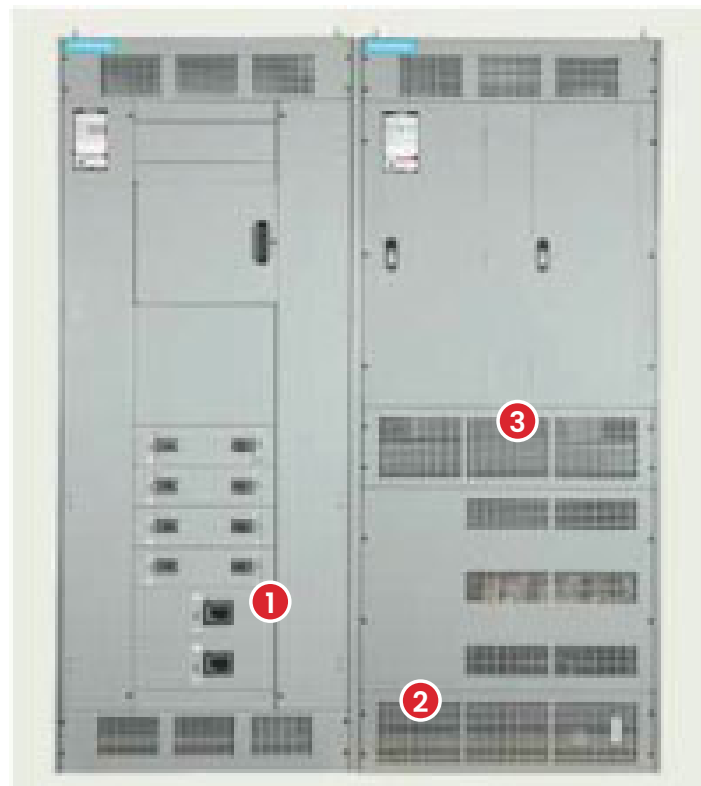
Integrated Power Systems Switchboard (IPS)

Integrate multiple pieces of electrical distribution equipment into a single assembly with Siemens Integrated Power Systems (IPS) switchboards. Featuring a modular design allowing it to be combined with standard service entrance or distribution switchboards, the IPS switchboard can also be cable or bus connected to existing switchboard lineups.

Features & Benefits

- All standard switchboard features
- Lighting panelboards
- Distribution transformers
- Half high distribution chassis
- Individually mounted breakers
- Auxiliary sections for ACCESS power monitoring, surge devices, contactors, relays, time clocks, motor starters & customer equipment.

Commonly Mounted Equipment



Reduce Installation Time up to 90%

IPS switchboards arrive on-site with components factory-installed and wired, significantly reducing installation time and leading to lower labour costs for projects.

Reduce space requirements up to 40% by integrating components that are typically mounted individually. The IPS switchboard dramatically reduces space requirements, freeing up valuable square footage that can be utilized for other profitable uses.

Reduce installation risk. Siemens manufacturing plants employ meticulous attention to detail reinforced with strict testing procedures. IPS switchboards ensure problems encountered with traditional installations are eliminated, so your projects come in on time and on budget.



Distribution sections

- Up to 2000A (full height)
- Up to 1200A (half height)



Transformers

- Up to 300KVA (full height)
- Up to 112.5KVA (half height)



Panelboards

- P1 up to 250A (full height)
- P2 up to 600A (half height)

SIEMENS

Sentron® FCI, FCII Switchboards

Delivering the rugged construction and service flexibility necessary in systems for industrial plants, high-rise complexes, hospitals and commercial buildings, Siemens FCI and FCII Switchboards are built to NEMA and CSA, C22.2 #31 and EEMAC, G8.2 standards. Switchboard distribution sections can accept a wide range of options including Sentron reliable low voltage circuit breakers, fusible switches, SPD modules, metering devices and relays, making future system modifications easier to handle without adding switchboard sections. Light, easy-to-handle, formed steel front, back and side covers that fit flush to the cabinet sides, make interior access to the FCI and FCII simple.

While the FCI is a standard switchboard with popular features, the FCII is designed for special configuration and can be equipped with incoming and outgoing busway connections, automatic transfer schemes and many other custom-engineered applications. It can also be supplied with special metering provisions, current transformers, potential transformers, panelboards and many other special features.



Switchboards with 90°C Rated Wireway

The termination temperature for main incoming cables can be sized at 90°C for bussed pull sections.

SIEMENS

Expanded Wiring Room and Exceptional Accessibility

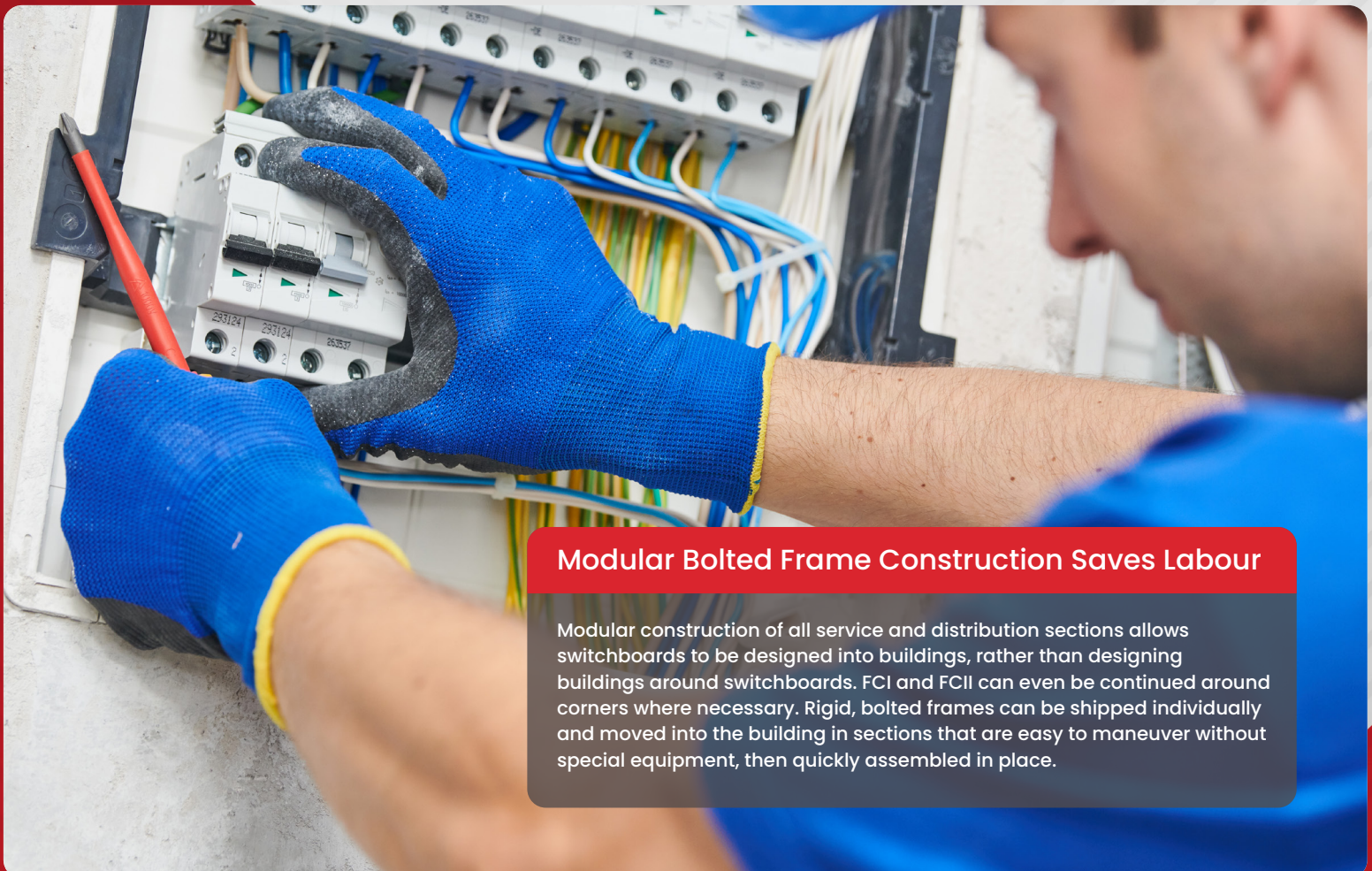
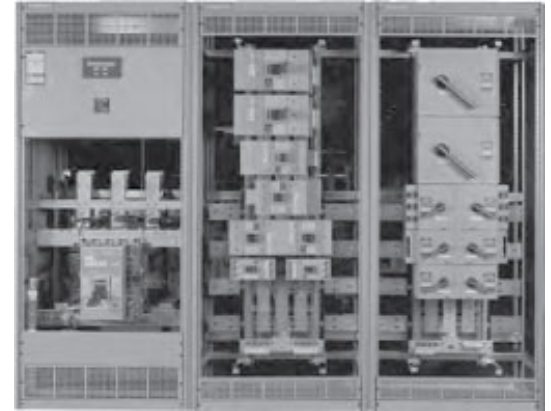
Distribution sections with improved wiring space for greater accessibility, easier installation and maintenance. Conveniently located through-bus creates useful wiring gutter space, and standard bolted gutter covers offer complete access to load conductors.

Less Wiring Time and Cost to Install

All through-bus to adjoining sections are located in the rear centre of distribution sections. This design provides large, unobstructed wiring gutters at the top and bottom of each section.

Front Splice Plate Accessibility

All splice plates can be bolted and unbolted from the switchboard front, making connecting adjacent sections easy. Each splice plate is attached by grade 5 bolts to assure solid joints between sections and maintain full bus ampacity through the splice joint. To make installation and servicing of the splice plates easier, all phase and neutral through-busses are stacked one above the other, eliminating the need to stuff bolts between bus bars that are stacked one behind the other in the same horizontal plane.






Modular Bolted Frame Construction Saves Labour

Modular construction of all service and distribution sections allows switchboards to be designed into buildings, rather than designing buildings around switchboards. FCI and FCII can even be continued around corners where necessary. Rigid, bolted frames can be shipped individually and moved into the building in sections that are easy to maneuver without special equipment, then quickly assembled in place.

SAFETY SWITCHES

SIEMENS




SWITCH ID SERVICE ENTRANCE

BARCODE	PRODUCT CODE	AMP RATING	POLE	PRICE
	SIEID223	100	2	\$189.98
	SIEID224	200	2	\$424.98
	SIEID323	100	3	\$474.98




SIEMENS

FUSIBLE INDUSTRIAL DUTY SWITCH, 3-POLES / 3-FUSE

BARCODE	PRODUCT CODE	AMP RATING	PRICE
	SIEID361	30	\$224.98
	SIEID362	60	\$264.98
	SIEID363	100	\$564.98

SIEMENS


600V FUSIBLE INDUSTRIAL DUTY SWITCH, 3-POLES / 3-FUSE

BARCODE	PRODUCT CODE	AMP RATING	PRICE
	SIEID364	200	\$889.98





SIEMENS

600V NON-FUSIBLE INDUSTRIAL DUTY SAFETY SWITCH, 3-POLE

BARCODE	PRODUCT CODE	AMP RATING	PRICE
	SIEID363NF	100	\$499.98
	SIEID364NF	200	\$899.98

SIEMENS



600V FUSIBLE HEAVY DUTY SAFETY SWITCH, 3-WIRE 3-POLE

BARCODE	PRODUCT CODE	AMP RATING	PRICE
	SIEHFC361R	30	\$399.98
	SIEHFC363R	100	\$839.98



SIEMENS



FUSIBLE HEAVY DUTY SAFETY SWITCH

BARCODE	PRODUCT CODE	AMP RATING	VOLTS	PRICE
	SIEHFC364R	200	600	\$1,120.00
	SIEHFC327N	800	240	\$8,099.98



SIEMENS




240V 2-POLES 2-FUSE FUSIBLE ID SWITCH

BARCODE	PRODUCT CODE	AMP RATING	PRICE
	SIEID225	400	\$1,689.98
	SIEID226	600	\$2,199.98



SIEMENS

FUSIBLE INDUSTRIAL DUTY SWITCH, 3-POLES / 3-FUSE

BARCODE	PRODUCT CODE	AMP RATING	VOLTS	PRICE
	SIEID425	400	240	\$2,099.98
	SIEID426	600	240	\$2,699.98
	SIEID365	400	600	\$1,999.98

SIEMENS P1 PANEL KITS

Simplifying Wiring for Maximum Flexibility

Revised P1 Panel Series

The P1 panelboard is the smallest panel in the Siemens lineup, with bus sizes up to 400A. What makes the P1 different is the split neutral bus design and the open-ended bus which simplify branch wiring and allow for maximum flexibility on the job. The split neutral bus design means the lead lengths for line and neutral can now be made nearly the same, creating more room and a neater installation. Because of its unique design, the P1 meets the majority of lighting panel needs.

Introduced in 2015, the Revised P1 has added extended circuits (up to 66 available) and has smaller enclosures and no subfeed options also available for added flexibility.

Field installable kits for many different applications and purposes can also be added to the P1 panelboards, including lug kits, breaker mounting kits, and replacement parts and accessories such as bonding kits, insulated ground buses and filler plates. These flexible options offered by the P1 panel make it easier to reconfigure the panel in the field for a contractor, and easier to upgrade and maintain for the Owner.

Ideal for Industrial Environments



Ideal for Institutional Environments



Ideal for Commercial Environments



PANELBOARDS

SIEMENS

\$579.98

250A 600/347V
3-PHASE P1 PANEL KIT



SIKITPIL30ML250AT

\$629.98

250A 208/120V
3-PHASE P1 PANEL KIT



SIEKITPIC42ML250AT

\$629.98

250A 600/347V
3-PHASE P1 PANEL KIT



SIEKITPIL42ML250AT

\$999.98

400A 208/120V
3-PHASE P1 PANEL KIT



SIEKITPIC42ML400AT

\$909.98

400A 600/347V 3-PHASE P1
PANEL KIT Interior Main Lug



SIEKITPIL42ML400AT

\$899.98

400A 600/347V
3-PHASE P1 PANEL KIT



SIEKITPIL30ML400AT



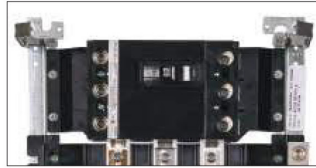
SIEMENS

What can Standard P1 Panelboards in the Field do with no Modifications?

- Change from top fed to bottom fed
- Add feed-through lugs
- Add an integral bus-mounted SPD
- Add a sub feed breaker up to 250 amp
- Change from Main Lugs to Main Breaker
- Change from Main Breaker to Main Lugs
- Panel may have up to two ground assemblies.

Options are: (a) standard aluminum, (b) optional copper, or (c) optional insulated/isolated aluminum or copper. Mounting provisions in opposing corners of the box are standard. Any of these options may be added after installation.

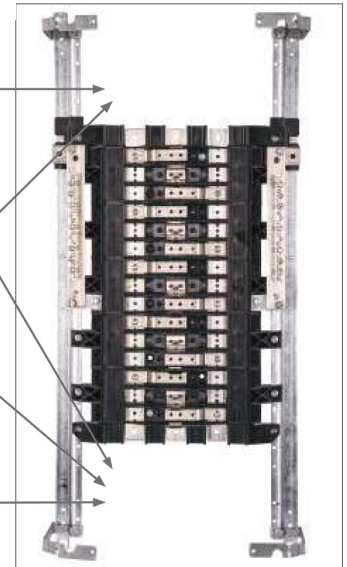
MAIN BREAKER or SUB-FEED BREAKER



MAIN LUGS of FEED-THROUGH LUGS



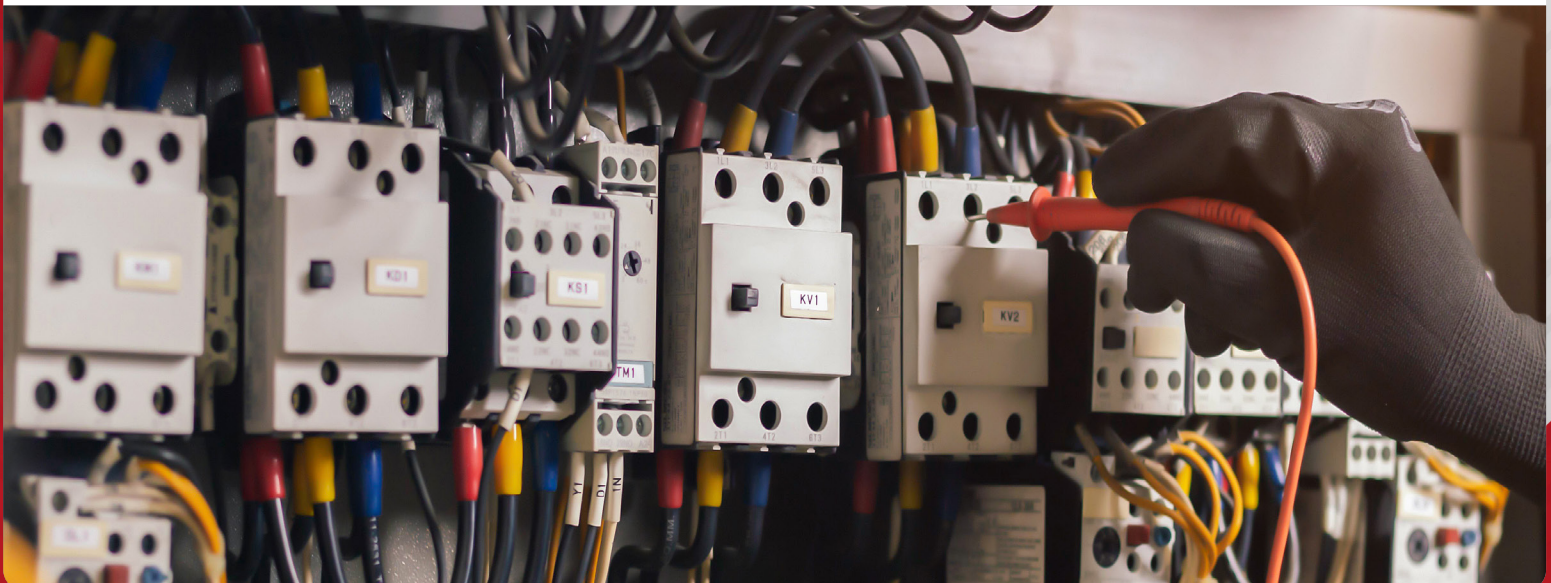
INTEGRAL BUS MOUNTED SPD



Maximum Flexibility

Featuring the industry's most adaptable designs, the Revised P1 Panel Series virtually eliminates common errors, such as feed direction, and main lug versus main breaker. Increasing distribution is simplified by the ability to add feed-thru lugs. Other benefits include:

- Voltage of 600Y/347V
- System options include 1PH 2W, 1PH 3W, 3PH 3W, and 3PH 4W
- 18 through 66 Circuits
- Available in several enclosure types (General Purpose, Weatherproof, etc.)
- Can be offered with smaller enclosures and no subfeed option for flexibility
- Aluminum or Copper Bus Material



SIEMENS P2 PANEL KITS Unassembled & Factory Assembled

Step Up Power Distribution with P2 Panelboards

Offering a stepped approach to power distribution (P1-P2-P3), the hallmark of the "P Series" line of panels is flexibility. With a wide array of factory-assembled options to meet virtually any lighting panel application, the P2 allows for the mixing of breaker frames (up to 250 amps) within the unit space and meets many distribution panel requirements in a much smaller package.

\$1,225.98

PANEL KIT P2
250A 66CT



SIEKITI2C66ML250ABL

\$1,399.98

PANEL KIT P2
400A 66CT



SIEKITI2C66ML400ABL

\$1,550.98

PANEL KIT P2
400A 90CCT



SIEKITI2C90ML400ABL

P2 Series

- Maximum Voltage of 600VAC and 250VDC
- System options include 1PH 2W, 1PH 3W, 3PH 3W, and 3PH 4W
- 125A-600A Main Lugs Amperage
- 100A-600A Main Breaker Amperage
- 18 through 90 Circuits
- 15-225A Branch Ratings
- 250A Max Subfeed Breaker
- Aluminum or Copper Bus Material

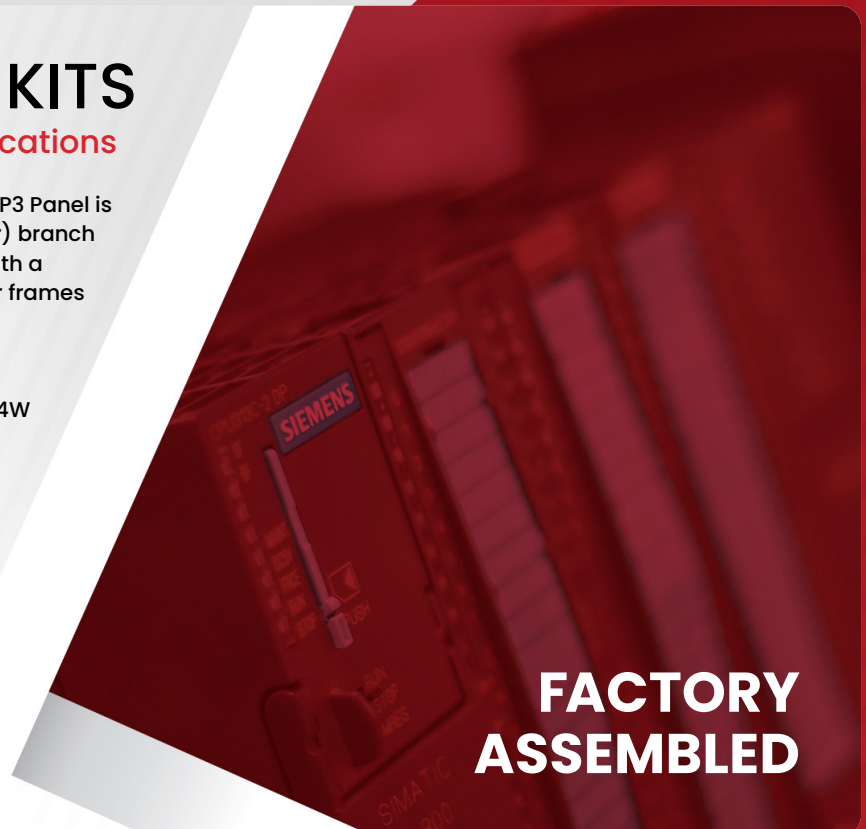


SIEMENS P3 PANEL KITS

Lighting, Appliance & Distribution Applications

An innovative and smaller footprint distribution panel, the P3 Panel is made to fit many applications that require more (or larger) branch devices than the lighting panel class can offer. It comes with a variety of factory-assembled options and can mix breaker frames in a unit space up to 250A.

- Maximum Voltage of 600VAC and 250VDC
- System options include 1PH 2W, 1PH 3W, 3PH 3W, and 3PH 4W
- 400A-800A Main Lugs
- 400A-600A Main Breaker
- 18 through 90 Circuits
- 15-225A Branch Ratings
- 400A Max Subfeed Breaker



**FACTORY
ASSEMBLED**

Acuity Centres for Configuration and Light & Space Learning

Located in Thornhill, ON, Acuity's Advanced Configuration Centre configures and ships thousands of fixtures each year. Thornhill is also where Acuity leads lighting, controls and daylighting educational seminars. Its Canadian Centre for Light & Space (CL&S) provides comprehensive education and training programs to arm customers with the knowledge of applying the best lighting solution for every environment. Training exposes participants to the latest innovations that improve lighting quality, save energy, and integrate digital controls, daylighting & building systems while accentuating the architectural space.



11

Agency Networks
Across All of
Canada



500+

Team Members
in Canada



420,000
sq feet
Manufacturing and
Distribution Facility

4

Manufacturing
Facilities in
Canada



FLAT PANELS & MOUNTING ACCESSORIES



\$89.00

2x4 CPX LED Flat Panel,
3500K/4000K/5000K



YKLCPX2X4ALO8SWW7M2



\$69.00

2x2 CPX LED Flat Panel,
3500K/4000K/5000K



YKLCPX2X2ALO7SWW7M4

\$76.00

1x4 CPX LED Flat Panel,
3500K/4000K/5000K



YKLCPIX4ALO7SWW7M4

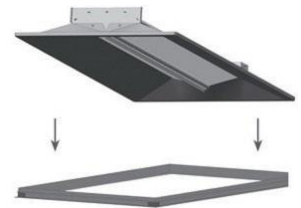


\$37.98

1x4 Drywall Grid Adapter



YKLDGA14



\$34.98

2x2 Drywall Grid Adapter



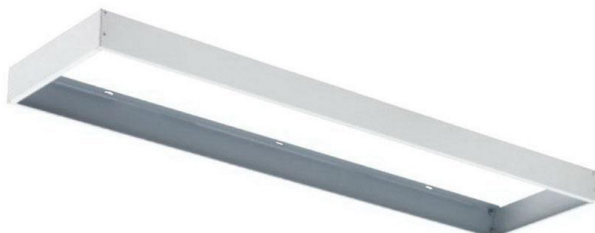
YKLDGA22

\$56.98

2x4 Drywall Grid Adapter



YKLDGA24



\$33.98

1x4 Surface Mount Troffer Kit



YKLIX4SMKSH

\$31.98

2x2 Surface Mount Troffer Kit



YKL2X2SMKSH

\$35.98

2x4 Surface Mount Troffer Kit



YKL2X4SMKSH

WRAPS



\$129.98

4" 120-277V Wide Body Wraparound,
40L/50L/60L, 4000K, Dimmable



YKLFML4W48ALO6SEF840MV



\$59.98

4" 120-277V Low Profile LED Wraparound,
4000K, Dimmable



YKLFMLWL48840ZTMVOLT



\$109.98

48" 120V LED Wide Body Wrap, 5000L,
4000K



YKLFML4W485000LM840ZTMV

HIGHBAY



Also available in 5000K



\$159.98

120V 14" X 11.5" CPHB Compact Pro™
High Bay, 15000Lm 4000K



YKLCPHB15LMMVOLT40K



Also available in 5000K



\$207.98

120V 22.5" X 11.5" CPHB Compact Pro™
High Bay, 24000Lm 4000K



YKLCPHB24LMMVOLT40K

SECURITY LIGHT



\$99.98

LED Security Floodlight, Adjustable
light output, 3CCT, 120V, Motion Sensor,
Bronze



YKLHGXLED2RHALOSWW2PIRBZ

VAPOUR TIGHT



\$109.98

4' CSV T LED Vapour Tight,
3000/4000/5000Lm,
3 CCT Selectable, 120-277V



YKLCSVTL48ALO3MVOLTSWW3

\$269.98

8' CSV T LED Vapour Tight,
6000/8000/10000Lm,
3 CCT Selectable, 120V-277V



YKLCSVTL96ALO4MVOLTSWW3

STRIP



\$145.00

120V 8' LED Dimmable Strip,
6000Lm/8000Lm/10000Lm,
3500K/4000K/5000K



YKLCSSL96ALO4MVOLTSWW3

\$72.98

120V 4' LED Dimmable Strip,
3000Lm/4000Lm/5000Lm,
3500K/4000K/5000K



YKLCSSL48ALO3MVSWW3

DOWNLIGHTS

juno®



\$15.98

4" Recessed Switchable LED Baffle Retrofit Module, 5CCT



JUN4BEMWSWW590CRIM6

juno®



\$15.98

6" Recessed Baffle LED Retrofit Downlight Module, 5CCT



JUN65BEMWSWW590CRIM6

juno®

\$48.98

4" Juno Podz LED Recessed Baffle Downlight,
5 CCT 1200L, Dimmable



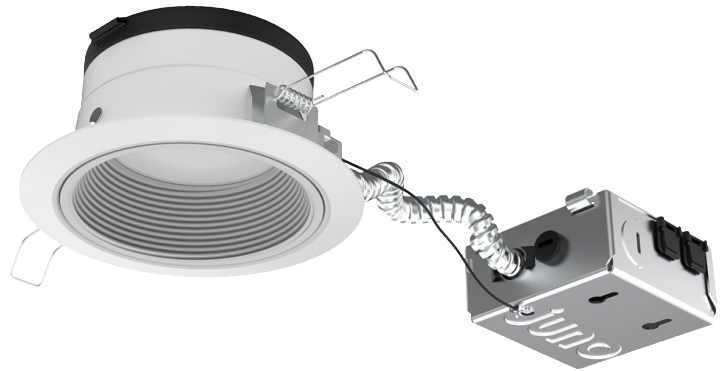
JUNJPDZ4DBALO10SWW5WDWWH

\$49.98

6" Juno Podz LED Recessed Baffle Downlight,
5 CCT 1200L, Dimmable



JUNJPDZ6DBALO10SWW5WDWWH



\$42.98

4" JunoConnect LED Wafer™
Downlight, Tunable White CCT's,
850L, Dimmable



JUNWF4CRDTUWHMWM6

juno®

**JUNOCONNECT "SMART"
WAFER DOWNLIGHT**

Juno®

\$15.50

4" LED Switchable Downlight,
650 Lm, White



JUNWF4SWW590CRIMWM6

\$16.50

4" LED Switchable Downlight,
650 Lm, Black



JUNWF4SWW590CRIMBM6

\$19.50

6" LED Switchable Downlight,
950 Lm, White



JUNWF6SWW590CRIMWM6

\$21.50

6" LED Switchable Downlight,
950 Lm, Black



JUNWF6SWW590CRIMBM6



Juno®



\$22.98

4" LED Regressed Switchable
Downlight, 650 Lm



JUNWF4REGSWW590CRIMWM6

\$26.98

6" LED Regressed Switchable
Downlight, 950 Lm



JUNWF6REGSWW590CRIMWM6

Juno®



\$13.98

4" Podz Frame Mounting



JUNJPDZ4RDNCMF120FRPCU

\$13.98

5" Podz Frame Mounting



JUNJPDZ5NCMF120FRPCU

\$13.98

6" Podz Frame Mounting



JUNJPDZ6NCMF120FRPCU

**GIANTECH
PLASTIC**



\$4.75

22.5" x 10" x 3.5" Plastic Vapour Barrier Bag



GIASVB12

**GIANTECH
PLASTIC**



\$7.50

22.5" x 10" x 7.5" Plastic Vapour Barrier Bag



GIASVB22

Stanpro is Dedicated to Brightening Experiences

One of the largest lighting companies in Canada, Stanpro entered the lamp business in 1984 and has since grown to 200 employees. Stanpro operates its engineering, design, manufacturing and distribution capabilities out of a 155,000 sq. ft. building located in Dorval, Quebec.

STANPRO

PUCK LIGHT KIT

STANPRO



\$56.98

3" Low Voltage LED 3-Puck Kit, White



IWAUCPKIT312V2W30KFRWH

STANPRO



\$56.98

3" Low Voltage LED 3-Puck Kit, Black



IWAUCPKIT312V2W30KFRBLK

STANPRO



\$56.98

3" Low Voltage LED 3-Puck Kit, Brushed Nickel



IWAUCPKIT312V2W30KFRBN



\$48.98

3.5" LED Gimbal Downlight High Output



STN69015



\$39.98

3" LED Gimbal Downlight High Output



STN69018

STANPRO

GIMBAL DOWNLIGHTS

FLOODS & MOUNTING ACCESSORIES

STANPRO



\$51.98

4' LED Linkable Wraparound



STNL2WMG481

STANPRO



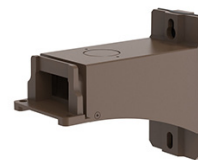
\$

FLB Gen 4 LED Flood Light, 4 Power Select, 300W, 3 CCT, 120V, Bronze



STNFLBXP300MW3CBR

STANPRO



\$20.98

FLB Gen 4 Pole Mount



STN68572

STANPRO



\$26.98

FLB Gen 4 Yolk Mount for 150W



STN68569

STANPRO



\$26.98

FLB Gen 4 Yolk Mount for 300W



STN68570

STANPRO



\$26.98

FLB Gen 4 Slipfitter Mount



STN68571

STANPRO



\$26.98

FLB Gen 4 Trunnion Mount



STN68573

STANPRO

FLOODS & MOUNTING ACCESSORIES



\$

FLB Gen 4 LED Flood Light, 4 Power Select, 150W, 3CCT, 120V, Bronze



STNFLBMPS150MW3CBR

Gescan proudly supports local businesses. Learn more about our Canadian-made products and vendors and shop featured products such as ABB emergency lighting, mini inverters and wire connectors. We're also offering lighting by Acuity Brands and Stanpro, plus Siemens meters, panelboards, switchboards and ID switches.

ABBSIEMENSAcuityBrandsSTANPROGESCAN.COM