

# **TEXCAN**

A Sonepar Company



## **UNARMoured MEdium VOLTAGE CAbLE CATALOGUE**

# WHY CHOOSE TEXCAN?

Our expertise lies in providing solutions tailored to each customer's individual needs. Texcan has been a leader in the wire and cable industry since 1978, consistently going above and beyond to serve our customers. As one of the largest wire and cable suppliers in Canada, Texcan specializes in serving the electrical market and offers an extensive range of products and specialized services.

## LOCAL INVENTORY WHAT YOU WANT, WHEN YOU NEED IT!

Texcan takes pride in our extensive inventory, offering a diverse selection of wire and cable options to meet customers' specific requirements. We prioritize convenience, ensuring that our customers have easy access to the products they need, when they need them.

## LOCAL EXPERTISE WITH A GLOBAL PRESENCE

Texcan is a proud member of the Sonepar Group. Founded in 1969, the Sonepar Group of companies is an independent family-owned company and global market leader in B to B distribution of electrical products, solutions, and related services.

# PRODUCT SOURCING

Texcan's preferred partners are selected based on their reputation for excellence, reliability, and expertise in their respective fields. These partnerships are built on mutual trust, shared values, and a commitment to delivering exceptional customer experiences. By collaborating with industry-leading manufacturers and suppliers, Texcan ensures that it consistently offers outstanding products and solutions to its diverse customer base.



## LIVE 24/7, 365 DAY EMERGENCY SUPPORT

Texcan recognizes the crucial importance of continuous, year-round operations. We understand that during emergencies, disruptions can pose significant risks and expenses. That's why we are fully committed to delivering prompt assistance whenever it is required. Our dedicated team is available 24/7 to provide live help, ensuring that your operations can swiftly resume without any unnecessary delays. To access our live assistance, simply call our toll-free number, 1.800.665.1025.

We are ready to provide the support you need, anytime, anywhere.



## ENGINEERING SUPPORT

By choosing Texcan, you gain access to our dedicated in-house engineering and product management team, along with manufacturer support for your project. The sooner you engage us, the greater the value we can provide.

When you collaborate with us, we can assist in reviewing your bill of materials, ensuring accuracy and efficiency. Our team specializes in streamlining cabling specifications, optimizing designs, and technical compliance throughout the project life cycle. Our expertise allows us to streamline processes and enhance overall project efficiency.

# TABLE OF CONTENTS

	Page No.
Unarmoured Medium Voltage Cable	4
Standard Design Features	5
Concentric Neutral - Copper Conductor	6
- Aluminum Conductor	7
Copper Tape	8

**To Place an Order** - For many of the products in the catalogue, you will find everything that you need to place an order. Should you need any assistance or require special orders, please contact your sales representative. A complete list of our sales offices can be found on the back cover of this catalogue.

## Introduction

Unarmoured Medium Voltage cables are a key component for the distribution and powering of electricity through a broad range of commercial, industrial, and utility facilities. CSA and the Canadian Electrical code recognize the need for both Concentric Neutral cables as well as Power Shielded cables in today's applications, because both products have their own unique characteristics.

Concentric Neutral cables are available in both aluminum and copper conductor constructions to provide a variety of applications for distribution networks. Power Shielded cables are available in copper and consist of Copper Tape Shield.



## Applications

Unarmoured Medium Voltage cables are suitable for use in multiple industry segments. Installations include above ground, in open air, in conduit, direct buried, in underground duct or suspended aerially with a messenger wire. Typical applications include underground and power feeders where voltages of 5kv to 46kv are required.

Whether it's Concentric Neutral cable for electrical distribution or Power Shielded cable for equipment, Texcan stocks a wide variety of Unarmoured Medium Voltage cable solutions.

## Specifications

- CSA FT1 & FT4
- CSA C68.5, C68.10, C96.1
- ICEA S-94-649
- ICEA S-93-639/NEMA WC74
- AEIC CS8

\*Refer to CE Code for details

### CAUTION NOTICE

In case of fire, well maintained early warning smoke detectors will give an alarm long before non-metallic coverings become combustible. However, the Electrical and Electronic Manufacturers Association of Canada has suggested that all purchasers of PVC insulated / jacketed products be advised of the following:

- Non-metallic coverings of electrical cables can burn and may transmit fire when ignited.
- Burning non-metallic coverings may emit acid gases which are toxic and may generate dense smoke.
- Emission of acid gases may corrode metal in the vicinity e.g. sensitive instruments and reinforcing rods in cement.

The installer and/or user assumes all liability for the consequences of the installation and/or use of any of the products in violation of any applicable law, regulation, or code.

## Unarmoured Medium Voltage Cable

Unarmoured Medium Voltage include Concentric Neutral cables, Copper Tape cables and Airguard cables. Each cable is available in various constructions.

In this catalog, Texcan references common types of Unarmoured Medium Voltage cables. The voltages referenced are up to 35kV, however Texcan stocks a range of 5kV to 46kV.

These products are available in a variety of insulations, jackets, voltages, and conductor types. They are suitable for both grounded and ungrounded insulation levels. Texcan also stocks a complete line of accessories to ensure medium voltage terminations are complete.

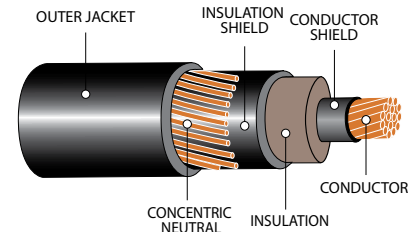


**Concentric Neutral Cables**– Used in wet or dry locations, for a wide variety of types of installations. The conductors are typically annealed, bare stranded copper or aluminum. The concentric neutral conductor, from which the cable derives its name, is bare or tin-coated copper wire, applied helically over the insulation shield. These wires act as the metallic component of the shield and the neutral, at the same time. Available in both 1/3rd size neutral or full size neutral.

**Copper Tape Cables**– The basic construction for power cables begins with a conductor of annealed, bare copper which may be compact or compressed. This is followed by an extruded semi-conducting shield applied over the conductor as well as includes an extruded semi-conducting shield over the insulation. Applied over the insulation shield is a copper tape shield. The copper tape's sole purpose is to shield the cable. Power cables carry a low temperature of -40°C and up to a maximum jacket temperature of 105°C.

## Concentric Neutral- Copper Conductor

TRXLPE/PVC



### SPECIFICATIONS

- CSA Approved
- CSA C68.5
- ANSI/ICEA S-94-649
- AEIC CS8

\*Refer to CE Code for details



### CONSTRUCTION

**Conductor:** Bare copper Class B stranded

**Insulation:** Tree-Retardant Cross-linked Polyethylene (TRXLPE)

**Insulation Shield:** Extruded semiconducting Thermoset Polymer

**Concentric Neutral:** Bare copper

**Jacket:** Polyvinyl Chloride (PVC)\*\* (see notation below)

**Options:** Aluminum constructions available upon request

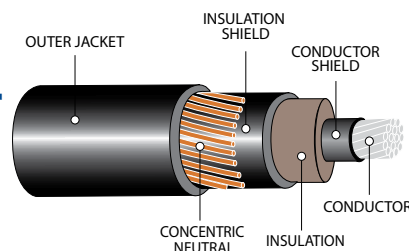
Part Number	Voltage	AWG Size		Concentric Neutral Size	Insulation Level	Insulation Thickness		Concentric Neutral Strand & AWG Size	Approximate Diameter		Net Weight	
		Cond.	Stranding			in.	mm		in.	mm.	LB/ MFT	KG/KM
07237-01-010	15kV	2	7	Full	100%	0.175	4.445	16 x 14	1.070	27.178	710	1057
07237-01-011	15kV	2	7	Full	133%	0.220	5.588	16 x 14	1.170	29.718	815	1213
07237-01-013**	15kV	2	7	Full	100%	0.165	4.191	16 x 14	0.872	22.14	658	979
07237-13-010	15kV	750	61	1/3	133%	0.220	5.588	16 x 8	2.030	51.562	4005	5959
07437-07-011	15kV	250	37	1/3	100%	0.220	5.580	13 x 12	1.58	40.13	2150	3199
07247-01-013**	25kV	1	19	Full	100%	0.260	6.604	20 x 14	1.190	30.226	928	1381
07247-05-011	25kV	3/0	19	1/3	133%	0.320	8.128	22 x 16	1.447	36.753	1303	1939
07247-06-013	25kV	4/0	19	Full	133%	0.320	8.128	20 x 10	1.601	40.666	1974	2937
07247-06-010**	25kV	4/0	19	Full	100%	0.260	6.604	20 x 10	1.540	39.11	1920	2857
07247-07-011	25kV	250	37	1/3	133%	0.305	7.747	21 x 14	1.652	41.96	1801	2680
07237-03-013	28kV	1/0	19	Full	100%	0.280	7.112	26 x 14	1.340	34.030	1156	1721
07237-04-012**	28kV	2/0	19	Full	100%	0.265	6.7321	20 x 12	1.302	33.07	1302	1973
07237-04-013	28kV	2/0	19*	Full	100%	0.265	6.7321	20 x 12	1.302	33.07	1302	1973
07237-06-013	28kV	4/0	19	Full	100%	0.280	7.112	20 x 10	1.799	40.386	1905	2835
07237-06-014	28kV	4/0	19	1/3	133%	0.311	7.89	18 x 14	1.638	41.60	1646	2449
07237-07-013	28kV	250	36	1/3	100%	0.280	7.112	21 x 14	1.580	40.26	1720	2560
07046-12-011**	28kV	500	37	1/3	100%	0.280	7.112	26 x 12	1.590	45.695	2959	4403
07237-15-011**	28kV	1000	58	1/3	100%	0.265	6.7321	32 x 10	2.144	54.45	5268	7839
07047-03-012**	35kV	1/0	19	1/3	133%	0.420	10.670	14x16	1.540	39.360	1154	178

Note: All dimensions are nominal and are subject to normal manufacturing tolerance.  
Specifications are subject to change without prior notice.

\* Refer to CEC for Ampacity.  
\*\*Part Number Represents Linear Low Density Polyethylene Jacket.

## Concentric Neutral- Aluminum Conductor

TRXLPE/LLDPE



### SPECIFICATIONS

- CSA Approved
- CSA C68.5
- ANSI/ICEA S-94-649
- AEC CS8

\*Refer to CE Code for details



### CONSTRUCTION

**Conductor:** Compact aluminum Class B stranded

**Insulation:** Tree-Retardant Cross-linked Polyethylene (TRXLPE)

**Insulation Shield:** Extruded semiconducting Thermoset Polymer

**Concentric Neutral:** Bare copper

**Jacket:** Linear Low Density Polyethylene (LLDPE)

**Options:** Copper constructions available upon request

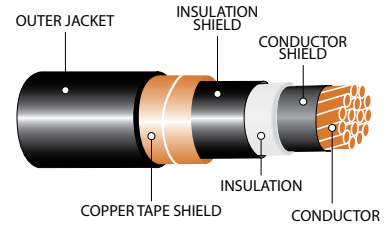
Part Number	Voltage	AWG Size		Concentric Neutral Size	Insulation Level	Insulation Thickness		Concentric Neutral Strand & AWG Size	Approximate Diameter		Net Weight	
		Cond.	Stranding			in.	mm		in.	mm.	LB/ MFT	KG/KM
07345-02-010	15kV	1/0	19	Full	100%	0.175	4.445	16 x 14	1.083	27.508	643	957
07346-01-010	25kV	1	1	Full	100%	0.260	6.604	13 x 14	1.159	29.439	645	960
07346-02-010	25kV	1/0	19	Full	100%	0.260	6.604	16 x 14	1.257	31.928	766	1140
07437-07-011	25kV	250	37	1/3	100%	0.220	5.580	13 x 12	1.58	40.13	2150	3199
07346-10-010	25kV	500	36	1/3	100%	0.260	6.604	25 x 14	1.676	42.57	1541	2293
07247-12-010	25kV	500	37	1/3	100%	0.260	6.604	17 x 10	1.92	48.77	2985	4442
07346-12-010	25kV	750	58	1/3	100%	0.260	6.604	25 x 14	1.94	49.27	2180	3244
07257-02-011	28kV	1/0	19	Full	100%	0.280	7.112	16 x 14	1.228	31.191	744	1108
07348-03-010	35kV	1/0	18	Full	100%	0.330	8.382	16 x 14	1.404	35.66	897	1334
07348-06-013	35kV	4/0	19	1/3	133%	0.420	10.668	17 x 16	1.756	44.602	1259	1873
07348-12-013	35kV	500	37	1/3	133%	0.420	10.668	25 x 14	2.094	53.188	2025	3013
07348-15-013	35kV	1000	61	1/3	133%	0.420	10.668	31 x 12	2.462	62.535	3145	4680

Note: All dimensions are nominal and are subject to normal manufacturing tolerance.  
Specifications are subject to change without prior notice.

\* Refer to CEC for Ampacity.

## Copper Tape Shield

TRXLPE/PVC



### SPECIFICATIONS

- CSA FT1
- CSA C68.10
- AEIC CS8 (upon request)

\*Refer to CE Code for details



### CONSTRUCTION

**Conductor:** Stranded bare copper

**Insulation:** Tree Retardant Cross-linked Polyethylene (TRXLPE)

**Insulation Shield:** Extruded semi-conducting conductor shield and insulation shield

**Jacket:** Polyvinyl Chloride (PVC)

**Options:** Aluminum constructions available upon request

Part Number	Voltage	AWG Size			Insulation Level	Insulation Thickness		Approximate Diameter		Net Weight	
		Cond.	Stranding	Nominal OD		in.	mm	in.	mm.	LB/ MFT	KG/KM
07011-07-011	5kV	1/0	19	0.340	100%/133%	0.090	2.286	0.810	20.574	545	811
07011-08-011	5kV	2/0	19	0.380	100%/133%	0.090	2.286	0.840	21.336	645	960
07020-03-015	5kV	4/0	19	0.480	100%/133%	0.090	2.286	0.980	24.892	960	1428
07001-12-012	5kV	250	37	0.520	100%/133%	0.090	2.286	1.030	26.162	1110	1652
07011-13-010	5kV	350	37	0.620	100%/133%	0.090	2.286	1.140	28.956	1460	2172
07001-16-012	5kV	500	37	0.740	100%/133%	0.090	2.286	1.260	32.004	1970	2931
07011-19-010	5kV	750	61	0.910	100%/133%	0.090	2.286	1.460	37.084	2855	4248
07031-02-012	15kV	2	7	0.270	100%	0.175	4.445	0.90	22.86	525	781
07031-02-011	15kV	2	7	0.270	133%	0.220	5.588	1.040	26.416	600	893
07031-01-010	15kV	1	19	0.320	133%	0.220	5.588	1.090	27.686	685	1019
07031-03-010	15kV	1/0	19	0.340	133%	0.220	5.588	1.110	28.194	760	1131
07031-04-012	15kV	2/0	19	0.380	133%	0.220	5.588	1.150	29.210	870	1295
07031-06-012	15kV	4/0	19	0.480	133%	0.220	5.588	1.250	31.750	1165	1734
07031-10-010	15kV	250	37	0.520	133%	0.220	5.588	1.320	33.528	1350	2009
07031-12-012	15kV	500	37	0.740	133%	0.220	5.588	1.540	39.116	2250	3348
07031-19-011	15kV	750	61	0.910	133%	0.220	5.588	1.800	45.720	3240	4821
07031-20-011	15kV	1000	61	1.120	133%	0.220	5.588	2.010	51.054	4180	6220
07041-10-014	25kV	250	37	0.520	133%	0.320	8.128	1.530	38.862	1550	2306

Note: All dimensions are nominal and are subject to normal manufacturing tolerance.  
Specifications are subject to change without prior notice.

\* Refer to CEC for Ampacity.

# INDUSTRIES WE SERVE



**AGRICULTURE**



**COMMERCIAL**



**COMMUNICATION**



**FORESTRY, PULP & PAPER**



**FOOD & BEVERAGE**



**HOSPITAL**



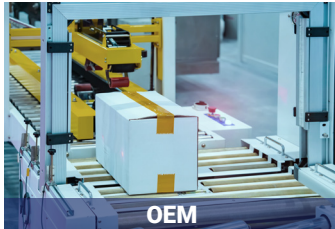
**INSTITUTION**



**LNG**



**MINING**



**OEM**



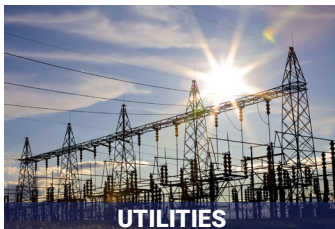
**OIL & GAS**



**RENEWABLE ENERGY**



**RESIDENTIAL**



**UTILITIES**



**TRANSPORTATION**



**WATER TREATMENT PLANT**

## CABLE MANAGEMENT PROGRAM

### CUSTOM TAGGING

We offer custom reel tags with project specific item identifiers and details, easing material management. Options include weather-proof, colour-coded stainless steel, printed RFID, or project specific templates.

### SPECIALIZED PACKAGING

We can custom pack orders according to almost any specifications. Whether it's specified reel sizes, bug-free reels, or shrink wrapped pallets, we make sure it's packed right.

### LOCAL AND INTERNATIONAL LOGISTICAL EXPERIENCE

Our team ensures your shipping standards, including custom packaging, are monitored, and met while keeping your project schedule in mind.

### LAGGING

For long-distance transit, including export, bad weather, and rough terrain, we use wood covers or other suitable durable packaging to protect the reels.

***When others can't, TEXCAN***  
WIRE & CABLE SPECIALISTS SINCE 1978

## Building Wire

- AC90 Armoured Cable
- Fire Alarm Cable
- ACWU Armoured Cable
- NMD90/NMWU90 Cable
- Solid/Stranded Bare Copper
- SIMpull Solutions®
- RW90/RWU 90 CU / AL
- T90 CU/TW75/TWH/TWU
- LVT
- Grounding Cable
- Pump Cable
- Copperweld Cable

## Control Cables

- Multi-conductor
  - Armoured/Unarmoured
- Portable Control Cable
- Shielded Control Cable
- Custom Bundling/Armouring

## Communication

- Computer Cable
- Inside/Outside Plant Wire
- Telephone Cable
- Plenum Cable
- Direct Burial

## Data Cables

- Category 5E, 6, 6A, 7 Rated Cable
- Co-Axial/Twin-Axial Cable
- Ethernet Cable
- Network Cable
- Patch Cords (Copper/Fiber Optic)
- Armoured Data Cable

## Electronic Cables

- Armoured Cable
- Audio/Visual Cable
- Broadcast Cable
- Coaxial/Twin-Axial Cable
- Low Capacitance Wire
- Plenum Wire
- Precision Video Wire
- Industrial Automation Cable
- Belden® Classics & NewGen

## Fiber Optic Cables

- SM/MM
- Loose Tube, Tight Buffer
- Indoor/Outdoor/Riser/ADSS
- Armoured/Non-Armoured
- Hybrid Fiber
- Specialty XPRLTM/RLTM

## Instrumentation

- Armoured/Unarmoured
  - Aluminum/Interlocked Steel
- Multi-conductor/Pairs/Triads
- Shielded/Unshielded
- Thermocouple Wire

## Marine Cables

- Boat Cable
- Shipboard Cable
- Offshore Rig/Marine Cable

## Mining Cables

- Blasting Wire
- Mine Power Feeder Cable
- Portable Power Cable
  - Type W, G, GGC, SHDGC (2KV to 35 KV)
- Trailing Cable
- Cable Assemblies
- Vertical Riser Cable
- Reeling Cable
- DLO (Diesel Locomotive Cable)

## Portable Cords

- High Temperature Cable
- Ultraflex™ Low Temperature Cord
- Ultraflex™ Extension Cord
- Retractable Cord
- Type: SJ00W, SO0W, SJTOW, STOW
- Welding Cable
- Stage Lighting
- Landscape Lighting
- Multi-conductor
- Jumper Cable

## Power Cables

- ACSR/AAC Linewire
- High Voltage Power Cable (69-300kv)
- TECK 90 HL Cable (600V-35KV)
- Overhead Service (NS75 / NS90)
  - Duplex, Triplex, Quadruplex
- Underground Service
  - USEI, USEB
- Variable Frequency Drive (VFD) Cable

- Tray Cable (5KV-35KV)
  - Power Cable (NFPA. 130)
- Underground Distribution
- Utility Hydro Cable
- Airguard™ Cable

## Specialty Products & Cords

- 2-Hour Fire Rated VITALink® Cable
- 2-Hour Fire Rated Duralife® Cable
- Coil Lead Wire
- European Cables (CE & VDE approved)
- Extra Flexible Portable Cable
- Heat Trace Cables & Accessories
- Low Smoke Zero Halogen Cable
- Parallel Conductor Cord
- RPVU90 Solar Cable
- SIS Switchboard Wire
- Small Diameter Flexible Control (SDN)
- Automotive Cable
- Battery Cables
- Guy Wire & Strand
- Mil Spec Hookup Wire
- Pendant Cables/Festoon
- Teflon® Insulated Wire
- TEW Equipment Wire
- Tracer Wire
- Trailer Cable
- TR64

## Transportation

- Catenary Cable
- Messenger Cable
- Signal Cable
- Track Wire
- Traction Power Cable
- Traffic Signal Cable CLMTO/IMSA

## Additional Services & Accessories

### Tools & Equipment

- Material Handling & Storage
- Cable Pulling & Fishing

### Power Management

- Extension Cords
- Temporary Power Distribution

### Lighting

- Area Lights
- String Lights
- Temporary Overhead Lighting

### Connectors

- Armoured Cable Connectors
- Explosion-proof Connectors
- Strain Reliefs Metal & Nylon
- Tray Cable Connectors

### Accessories

- Hardware, Lugs, Cable Ties
- 3M Accessories
  - Cold Shrink Splices and Terminations
  - Heat Shrink Splices and Terminations
  - Full Line of Accessories Available
- High Voltage Termination Kit
- Split Loom

### Value Added Services

- Custom-Built Cables
- Cable Management Program
- Specialized Technical Assistance
- 24/7 Emergency Shipping Service
- International Export Services
- Custom Cables/Printing/Cutting
- Paralleling/Lagging/Tagging
- Bundling/Armouring
- Bar Coding and Inventory Tracking
- State-of-the-Art Distribution Centre

Visit our website at [Texcan.com](http://Texcan.com) and social media [@TexcanCanada](https://www.facebook.com/TexcanCanada)

### VANCOUVER

1-800-665-1025  
10449 120th St. Surrey, BC

### MAJOR PROJECTS GROUP

1-888-818-9473  
10449 120th St. Surrey, BC

### EDMONTON

1-800-252-7545  
11330 189 St. NW. Edmonton, AB

### CALGARY

1-855-717-3900  
190-11600 Stonehill Dr. NE Calgary, AB

### SASKATOON

1-855-385-3800  
3403 Faithfull Ave. Saskatoon, SK

### WINNIPEG

1-800-665-2491  
25 Meridian Dr. Winnipeg, MB