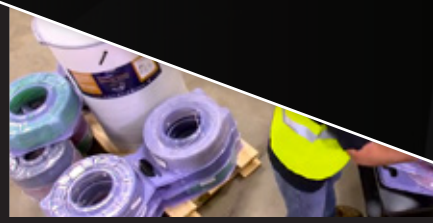
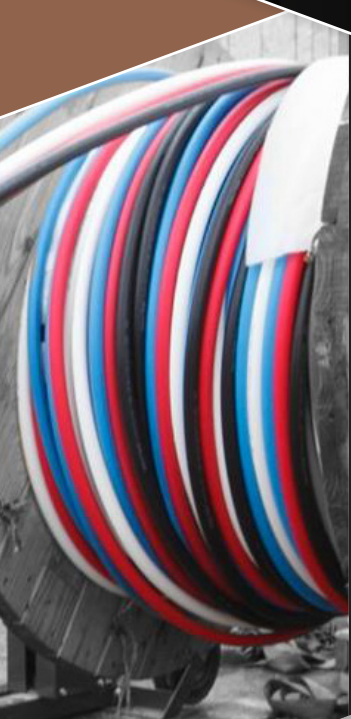


Southwire™  
**TEXCAN**  
A Sonepar Company

**SIMpull**  
**SOLUTIONS®**  
INNOVATIONS



**BUILT FOR DURABILITY.  
BUILT FOR RELIABILITY.  
BUILT FOR WORK.™**

**SAFER  
FASTER  
CLEANER  
FEWER STEPS  
FEWER MISTAKES**

## **NoLUBE® Cable. Guaranteed.**

### **SIMpull T90®, SIMpull RW90™, and SIMpull RWU90™ Cables**

Southwire's SIM Technology® cable products are speeding up installation time, creating a safer work environment and changing the process of how intermediate and feeder size cables are pulled in to a conduit. Southwire's NoLUBE® SIMpull T90®, SIMpull RW90™, and SIMpull RWU90™ cable don't require the use of pulling lubricant when pulled into conduit. Southwire guarantees that SIMpull T90®, SIMpull RW90™, and SIMpull RWU90™ cable will pull into conduit the same way that lubed SIMpull T90®, SIMpull RW90™, and SIMpull RWU90™ cable will.

- NoLube® SIMpull® cables reduce the risk of injury to fingers while applying lube to a moving cable and further reduce the risk of injury from slipping on spilled lubricant.
- SIMpull T90®, and Dual Rated SIMpull THHN™ cable is available in standard colors, both copper and aluminum conductors, in sizes 14-10 awg (SIMpull® CoilPAK™ wire payoff and SIMpull BARREL™ cable drum packages only) and 8awg –1,000 kcmil in copper and 6 awg – 1,000 kcmil in aluminum.
- SIMpull T90®, SIMpull RW90™ and Dual Rated SIMpull THHN™ cables with AlumaFlex® brand conductors are made with AAA-8000 series aluminum alloy and are ½ the weight of copper.
- Both SIMpull T90®, SIMpull RW90™, and Dual Rated SIMpull THHN™ cables have sequential footage markers in sizes 1/0 –1,000 kcmil.
- SIM Technology® gives you the ability to pull short lengths by hand or stop in the middle of a pull to break for lunch or other job site situations.
- Reduces horse-collaring for reduced risk of nylon tears on SIMpull T90® and Dual Rated SIMpull THHN™ cables.
- Rated sunlight resistant in sizes 2 awg and larger on SIMpull T90®, and Dual Rated SIMpull THHN™ cables, #8 and larger on SIMpull RW90™ and SIMpull RWU90.
- Installation performance is guaranteed under the SIMpull Product Performance Guarantee.



# REVOLUTIONARY INNOVATION THAT CHANGES THE WAY BUILDING WIRE IS INSTALLED

## We've reinvented the reel.

With a variety of options to customize your reels.

### Paralleled and the original, patented SIMpull Stack™ Reels

Southwire's individual Parallel and the original, patented SIMpull Stack™ reels allow you to combine multiple pulls on one single reel. That's right, *ONE REEL* with up to 5 wires of individually colored conductors, for up to 4 pulls, depending on the size of the cable and length of the pull. And, as always, we can label each reel with a specific location, so when you receive it on the job site it's easy to see where it goes. For multiple runs in a pull, just remove the shrink wrap pull the first run, then pull the second, third and so on, without ever having to set-up additional reels.

- Reduces scrap and clean-up by reducing the number of reels on a job.
- Speeds up installation time.
- Reduces the risk of injury from moving and setting up multiple reels.
- Each segment can be cut-to-length and is separated with shrink-wrap between each layer.
- SIMpull Head® pulling grips can be attached to each cut length and each circuit, all wrapped in a protective covering. Just attach the pull rope using a clevis and pull.
- Easy to read tagging allows you to quickly identify the make-up of each individual circuit contained on the SIMpull Stack™ reel.



### Rip CHIP™ System

Offers a safer, more efficient means to remove the plastic protective wrap from reels, eliminating the need for electricians to use knives or other sharp tools. Included on all single parallel reels and on each shrink-wrapped layer of SIMpull Stack reels shipped from a Southwire Service Center.



**SAFER  
FASTER  
CLEANER  
FEWER STEPS  
FEWER MISTAKES**

## **SIMpull™ Reel**

The SIMpull™ Reel revolutionizes the job site by allowing one person to safely\* move a reel that weighs up to 6,000lbs., without the need of pallet jacks or other equipment.

### **FEATURES**

- Independently rotating outer flanges
- Separately rotating inner reel
- Integral magnetic reel chocks
- Integral payoff tension adjustment
- 6,000-lbs maximum load capacity
- 1 size available: 61"H x 32"W
- Can be used with colored feeder wire, cord, MV, and CU & AL SIMpull® products

\*On flat level floors

### **ACCESSORIES**

**SIMpull™ Reel Sleeve Set** - Stock# 59840101

- SIMpull™ Reel Covers help protect finished floors
- Prevents marks on finished floors.
- Easy to install

## **SIMpull™ Cradle**

Southwire's SIMpull™ Cradle allows for easy, one-person operation to hold 61" SIMpull™ Reels. Its heavy-duty steel design holds up to 6,000 lbs.

### **FEATURES**

- SIMpull™ Reel can payoff directly from cradle
- Easy one-person loading and unloading
- Forklift and pallet truck maneuverable
- 6,000 lbs. capacity

### **BENEFITS**

- Eliminates the need for pallet jacks
- Significantly easier and safer to move reels throughout a job-site
- Reels fit through 36" wide doorways
- Allows reel to be placed right next to feed conduit/point
- Eliminates the need for reel jacks and arbor tube/conduit



A task that used to be a time-consuming and messy set up process is now safer, faster, and cleaner.

# WHICH MAKES YOU MORE EFFICIENT, MORE COMPETITIVE, AND MORE PROFITABLE.

## SIMpull™ Flange

The SIMpull™ Flange's patented shaftless design, safely allows one person to turn a wooden or plastic reel up to 34 in. and 2,000 lbs into a time saving, field-installable solution that removes the need to handle heavy jack stands. Each flange rotates independently and allows free movement of loaded wooden or plastic reels. The SIMpull™ Flange is reusable in the field and can be installed on multiple reels throughout the jobsite.

### FEATURES

- Patented shaftless design
- Independently rotating flanges
- 104 lb tare weight per Flange set
- Compatible with wooden or plastic reels up to 34" and 2,000 lbs with a 3 arbor
- Includes magnetic chocks
- Allows inner wooden or plastic reel to rotate freely
- Compatible with most commercial & residential reels

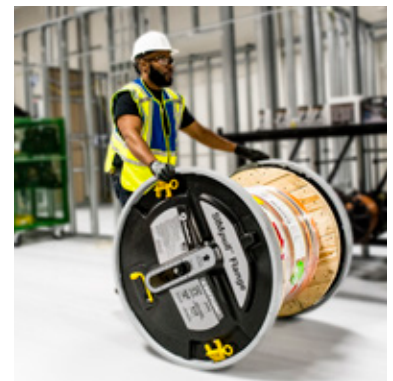
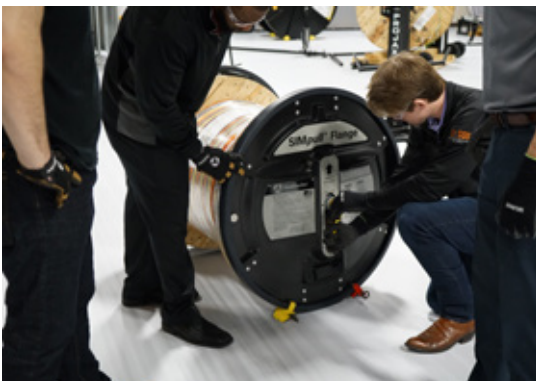
### BENEFITS

- Designed to be installed in the field
- Stand included for easy transport and storage
- Allows reel to be placed right next to feeding location
- Significantly easier and safer to move reels throughout a jobsite
- Can be reinstalled onto multiple reels throughout the course of the job
- Eliminates the need for jacks and axles on compatible reel sizes

### ACCESSORIES

#### SIMpull™ Flange Sleeve Set - Stock# 65148140

- SIMpull™ Flange Covers help protect finished floors
- Prevents marks on finished floors.
- Easy to install



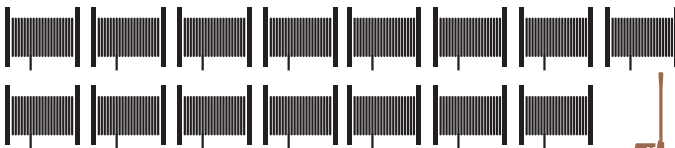
**SAFER  
FASTER  
CLEANER  
FEWER STEPS  
FEWER MISTAKES**

## SIMpull™ Reel Payoff

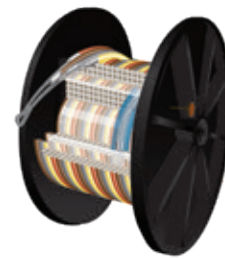
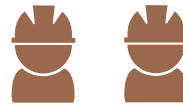
### TRADITIONAL

VS.

### SIMpull™ REEL PAYOFF



Feeders: The Traditional Way  
15 reels, 1 pallet jack, 5 reel jack stands, 5 axles, 7 electricians



The SIMpull™ Flange  
1 SIMpull™ REEL Payoff  
2 Electricians

#### Solutions Optimization

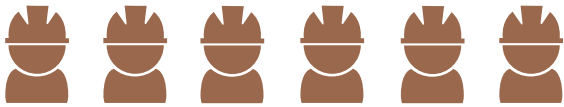
- SIMpull™ Reel Payoff
- SIMpull™ Stack® Reel
- SIMpull™ Head Pulling Grips
- SIMpull™ NoLube® Jackets
- Colored Feeder Cable (CU & AL)
- SIMpull™ Rip Chip
- QWIKrope™ Pulling Rope
- Contractor Equipment
- Configurator - Feeder planning tool
- SIMpull™ Cable Pull Calculator - planning tool to model conduit runs & feeder pulls, determine equipment needs, etc...



# DRAMATICALLY IMPROVES INSTALLATION TIMELINES

## SIMpull™ Flange

### TRADITIONAL

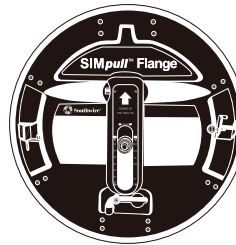
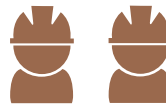


#### Feeders: The Traditional Way

4 reels, 1 pallet jack, 4 reel jack stands, 4 axles, 6 electricians

VS.

### SIMpull™ FLANGE



#### The SIMpull™ Flange

1 SIMpull™ Flange, 2 Electricians,

1 paralleled reel, Drill with 3/4 in. socket, Socket wrench (3/4 in.)

#### Solutions Optimization

- SIMpull™ Flange
- SIMpull Stack™ Reel
- SIMpull Head® Pulling Grips
- SIMpull NoLube® Jackets
- Colored Feeder Cable (CU & AL)
- Rip Chip™ Pulling Device
- QWIKrope® Pulling Rope



**SAFER  
FASTER  
CLEANER  
FEWER STEPS  
FEWER MISTAKES**

## **SIMpull® CoilPAK™ Wire Payoff**

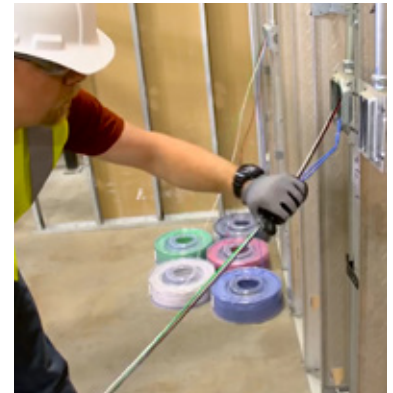
The SIMpull® CoilPAK™ wire payoff helps increase both safety and productivity by reducing the physical effort associated with material handling, pulling wire out of the package and through conduit. The innovative package and multi-conductor package options can also help reduce the amount of scrap reels.

### **FEATURES**

- SIMpull® NoLube® wire jacket
- Package fully encases & helps protect wire
- Built-in handle and payoff directly from package
- 1, 2, 3, and 4 wire constructions available
- Wide selection of sizes and colors available in SIMpull T90®, SIMpull RW90™, and Dual Rated SIMpull THHN™ Cables

### **BENEFITS**

- Easy to pull with SIMpull NoLube® wire
- No more broken spools
- Designed to help reduce potential lifting/handling/pulling injuries
- Space saving, multi-wire CoilPAK™ payoffs with striped neutrals increase efficiency and reduce material handling and setup
- Designed to help increase productivity
- Innovative design reduces pulling effort



THE TIME YOU SPENT PREPPING, WAITING AND CLEANING, YOU NOW SPEND SIMPLY DOING THE JOB MORE EFFICIENTLY AND SAFELY SO YOU CAN MOVE ON TO THE NEXT JOB. IN THIS ECONOMIC CLIMATE, THAT'S QUITE AN ADVANTAGE WHEN YOU'RE ONE OF MANY CONTRACTORS BIDDING ON A SINGLE JOB.

## SIMpull BARREL™ Cable Drum

The SIMpull BARREL™ Cable Drum increases both safety and productivity by reducing the physical effort associated with material handling and pulling wire off spools and through the conduit. The barrel package can hold up to 7 conductors (homerun) which will help reduce scrap.

### FEATURES

- SIMpull® NoLube® wire Jacket
- Striped Neutral Conductors
- Package encases the wire for protection
- Available in #10, 12, 14 up to 7 conductors
- Available in #6 and 8 up to 4 conductors
- SIMpull T90®, SIMpull RW90™ and Dual Rated SIMpull THHN™ Cables available

### BENEFITS

- Easy to pull with SIMpull® NoLube® wire
- Pays off directly out of package
- Avoid broken spools
- Designed to help reduce potential lifting/handling/pulling injuries
- Patented parallel designed to increase productivity



**SAFER  
FASTER  
CLEANER  
FEWER STEPS  
FEWER MISTAKES**

## 30k Reel Roller

Southwire now offers the RR-SW30. With its heavy duty, all welded construction it is built to handle 30,000lbs. With convenient fork tubes and lifting eyes, maneuvering the equipment around the jobsite is easy. You can now safely operate the reel roller by standing outside of the wires path by remotely operating the unit with the handheld pendant that includes a variable speed adjustment.

When the job is finished and it's time to store the unit, the RR-SW30 will not take up as much room as traditional reel rollers with our new stackability feature. All that is needed is a 2" piece of rigid conduit cut to the desired length and installed in the feature. This unit can be stacked 4 units high.

### FEATURES

- Handles up to 30,000 lbs reels
- Stackable to 4 units high
- Speed control adjustment
- Handheld pendant with variable speed control allowing for remote operation
- Heavy duty 10-AMP motor
- Convenient fork tubes on both sides
- Made in the USA
- Heavy duty all welded construction
- 3-4 week lead time
- 10 year life of asset



## 45K Reel Roller

Southwire now offers the RR-SW45. With its heavy duty, all welded construction it is built to handle 45,000lbs. With convenient fork tubes and lifting eyes, maneuvering the equipment around the jobsite is easy. You can now safely operate the reel roller by standing outside the wires path by remotely operating the unit with the handheld pendant that includes a variable speed adjustment.

When the job is finished and it's time to store the unit, the RR-SW45 will not take up as much room as traditional reel rollers with our new stackability feature. All that is needed is a 2.5" piece of rigid conduit cut to the desired length and installed in the feature. This unit can be stacked 3 units high.

### FEATURES

- Handles up to 45,000 lbs reels
- Stackable to 3 units high
- Handheld pendant with variable speed control allowing for remote operation
- Variable frequency drive motor
- Convenient fork tubes on both sides
- Made in the USA
- Heavy duty all welded construction
- 3-4 week lead time
- 10 year life of asset



**SAFER  
FASTER  
CLEANER  
FEWER STEPS  
FEWER MISTAKES**

## **SIMpull Head® Pulling Grips**

Safety, time and reliability certainly come into play when making up a pulling head in the field.

Approximately 3 feet or more of cable, on every phase, is wasted, not to mention the time and clean up. Order your cables with factory installed SIMpull Head™ pulling grips that arrive already on the cable. Installation performance is guaranteed under the SIMpull Product Performance Guarantee.



The low profile, staggered design of the heads assure that it always fits into the conduit, especially on tight turns. There's never an injury from making up a pulling head in the field and, there's absolutely no waste or clean up on paralleled cables, cut-to-length with factory installed pulling grips.

Just set up the reel, hook on your rope with a clevis and pull. It's that simple. The heads are cut off after the pull and can be recycled.

Maxis® Grips™ Pulling Heads also available.

## **Maxis® XD1**

Safer, faster and more efficient way to pull low voltage, branch circuit home runs, lighting cables, and small circuit sized wires. This patent pending puller can help reduce installer fatigue by eliminating the need to pull wire or rope by hand.

### **FEATURES**

- Lightweight and portable
- One person setup and operation
- Accepts most commercial 18V cordless drills
- Removable capstan to facilitate polyline removal
- 600 lbs. of constant pulling force with 1,000 lbs. peak pulling force
- Anodized for corrosion resistance



# CHANGE IS DRIVEN BY THE NEED FOR A BETTER SOLUTION. CHANGE REQUIRES INNOVATION.

Not just innovative new products, but also innovative new processes that improve the safety and quality of electrical installations.

## Maxis® Cable Pullers and Other Maxis® Equipment

An engineering and development focus on the shortcomings of existing cable pullers led to the development of the line of Maxis™ cable pullers. A lightweight, high-speed line of pullers, capable of pulling up to 10,000 lbs, sets up in just minutes, without a gang box of parts or a need to bolt to the ground. Add dual remote foot pedals for dual motor control and experience the safest, most time and cost-efficient wire pulls you've ever had.

### MAXIS® XD10



XD10

The Maxis® XD10 EXTREME Duty Cable Puller is designed to get the job done, thriving in the most extreme pulling conditions. The XD10 allows you to pull faster and safer up to 10,000 lbs.

### SIMpull HEAD® PULLING GRIPS



SPH

Factory and field installable pulling grip that has a low profile head and eliminates the problem of the head not fitting in the conduit or around a tight turn.

### MAXIS® FEEDER



MCF01

Designed and built specifically to accommodate Southwire® NoLube® wire, the Maxis® Feeder is a revolutionary way to feed wire quickly and efficiently.

### MAXIS JAX™ REEL STANDS



MJ707

A unique reel stand that will quickly set up and lift reels of wire safely and efficiently without the hassle of conventional reel stands.

### TRIGGERS® WIRELESS SAFETY SWITCH SYSTEM



TSS01

Safety system designed to control the input power of any piece of jobsite equipment

### MAXIS® PRO-JAX® REEL STANDS



MPJ02

A 10,000 lb. capacity portable reel stand.

### EXTREME DUTY TENSION MONITOR



XDTM

With a working load of 10,000 LBS, USB port for easy data extraction, back lit screen for easy viewing, built in battery for long life, and custom roller case, the XDTM easily inserts into rope line without disassembly.

### MAXIS® XD1



XD1

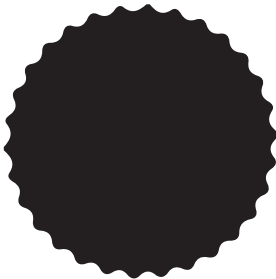
The Maxis® XD1 Extreme Duty Circuit Puller is a lightweight, portable cable puller with 600lbs of constant pulling force with 1000 lbs peak pulling force.

**SAFER  
FASTER  
CLEANER  
FEWER STEPS  
FEWER MISTAKES**

## Southwire Solutions University

### A Unique Training Experience

SSU delivers real-world product training for contractors, distributors and apprenticeships throughout North America. SSU is based out of Southwire's Thorn Customer Solutions Center in Carrollton, GA with more than 15,000 square feet of classroom and hands-on experience area. SSU training focuses on Southwire's unique products and services that promote safety and productivity on every job.



GET QUALIFIED BY  
THE INDUSTRY LEADER



GAIN HANDS-ON  
EXPERIENCE



WORK MORE SAFELY  
AND PRODUCTIVELY



INCREASE PROFITABILITY



# REAL WORLD TRAINING FOR REAL WORLD SOLUTIONS

## Contractor Solutions Professionals

---

Southwire's Contractor Solutions Professionals have years of experience in jobsite solutions and are here to help. A CSP will come to the jobsite to consult on layouts, pulling calculations and the overall setup. The CSP will be fully dedicated to your jobsite needs and will also have equipment available to demo on the jobsite.



**SAFER  
FASTER  
CLEANER  
FEWER STEPS  
FEWER MISTAKES**

## Simple Distribution

Five fully stocked customer service centers are strategically spread across the US to assure we can get you the products you need, built and packaged to your specifications, to your job when you need them.

By having a network of distribution centers, we are able to better service your needs because we understand local market conditions.

We are where you are.



## Simple Delivery

Have your color, paralleled, cut-to-length reels, with SIMpull Heads™ pulling grips installed and delivered on SIMpull® Payoffs, on our SIMpull® Truck. You can then move the reels on the payoffs to the pull site, or you can back a flatbed truck with SIMpull® Payoffs up to your jobsite, hook the rope to the pulling grips and start your pull.

If your jobsite allows for this option, you're more likely to make up for any lost time, meet tight deadlines and ultimately get the job done ahead of schedule, regardless of the problems or issues you may have thought would delay the project and take you over budget.



By making improvements to all the individual steps of the installation, you begin to see significant improvements to the total installation, primarily in the areas of

**RELIABILITY, SAFETY, EASE OF INSTALLATION,  
AND EFFICIENT USE OF LABOR.**

## **SIMpull® Product Performance Guarantee**

---

Southwire Company, LLC guarantees that copper and aluminum SIMpull T90®, SIMpull RW90™ and SIMpull RWU90™ conductors, and SIMpull® Power cables can be installed without requiring the application of lubricant to facilitate pulling through PVC or metal conduit, provided that the instructions available on the Southwire website are followed.

**The guarantee is null and void unless the Contractor follows the instructions found in Southwire's "Installation and Application Guide for SIMpull® 600V/1000V Conductors" when installing the cable.**

The guarantee is valid only for installations where only Southwire SIMpull T90®, SIMpull RW90™ and SIMpull RWU90™ conductors, or SIMpull® Power cables are used exclusively. The guarantee will not be honored on any circuits/runs where Southwire product is pulled in combination with another manufacturer's product.

If during installation, the performance of copper or aluminum SIMpull T90®, SIMpull RW90™ and SIMpull RWU90™ conductors, and SIMpull® Power cable is not equivalent to the performance standard of conductors or cables installed with conventional lubricant applied at the time of installation, Southwire Company will reimburse the Contractor for the direct costs incurred replacing conductors that did not meet such equivalent performance standard during installation. **Under no circumstances, will Southwire be responsible for indirect costs, consequential damages, or incidental damages including loss of profit or revenue.**

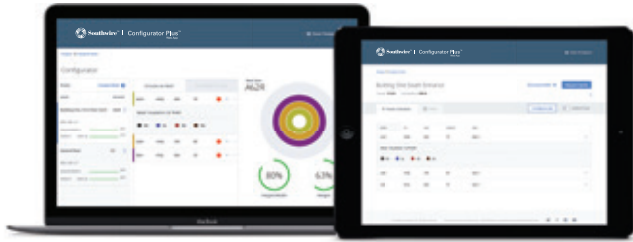
Southwire reserves the right to have one of its representatives inspect the jobsite, the SIMpull cable, and the method used for installation prior to their removal.

This guarantee is separate and distinct from the product warranty set forth in Southwire's terms and conditions of sale located at: <https://www.southwire.com/TermsAndConditions>.

Claims made against this guarantee must be made in writing to Southwire on or before (i) **one week after the installation date**; or (ii) the expiration of the product's warranty period, whichever is earlier.



# CONTROLLING COSTS ON THE JOB IS HOW YOU KEEP YOUR BUSINESS, **IN BUSINESS.**

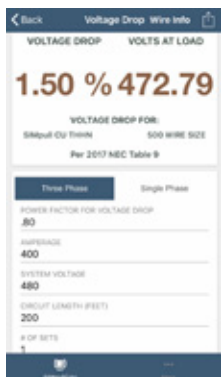


## Configurator Plus™ Web App

Whether you're on the jobsite or on the go, you can access the Configurator Plus™ Web App on any device connected to the internet. This is a free cloud-based web application to help plan and manage pull schedules, or to order your feeder reels from Southwire or other regional distributors.

- Optimize job site installations
- Plan, manage, and order your feeder reels
- Improves accuracy and reliability on every order, small or large
- Gives you an easy step-by-step process to customize and order reels for all your projects
- Can be accessed on any device that is connected to the Internet

Go to [ConfiguratorPlus.Southwire.com](https://ConfiguratorPlus.Southwire.com) and use the Configurator Plus™ Web App Calculator to plan your next project.



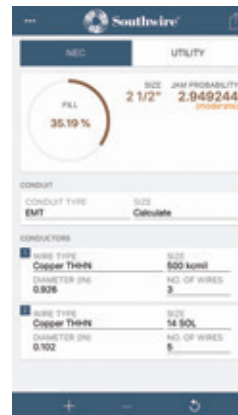
## SIMpull® Cable Pull Calculator

Use this simple tool to calculate conduit size and fill percentage, pulling tensions, cable sidewall pressure, jam probability, voltage drop, ground wire sizing and more.



## Voltage Drop Calculator

Determines wire size to meet specific voltage drop limits or calculates voltage drop for a specific conductor run. When sizing conductors, calculations limits wire size to voltage drop and NEC ampacity. Southwire's Voltage Drop Calculator is designed for applications using AWG and KCMIL sizes only.



## Conduit Fill Calculator

A great tool to help electricians, engineers and contractors answer the question, "What size conduit do I use per the NEC®?"

The app will calculate the conduit fill percentages and jam probability for multiple conductors per NEC® Guidelines. Simply enter the conduit type and size, then specify your conductors.



**Southwire**<sup>™</sup>  
**TEXCAN**  
A Sonepar Company

**SIMpull**  
**SOLUTIONS**<sup>®</sup>  
INNOVATIONS

Visit our website at [Texcan.com](http://Texcan.com) and social media [@TextcanCanada](https://www.instagram.com/TextcanCanada)

**VANCOUVER**

1-800-665-1025  
10449 120th St. Surrey, BC

**CALGARY**

1-855-717-3900  
190-11600 Stonehill Dr. NE Calgary, AB

**MAJOR PROJECTS GROUP**

1-888-818-9473  
10449 120th St. Surrey, BC

**SASKATOON**

1-855-385-3800  
3403 Faithfull Ave. Saskatoon, SK

**EDMONTON**

1-800-252-7545  
11330 189 St. NW. Edmonton, AB

**WINNIPEG**

1-800-665-2491  
25 Meridian Dr. Winnipeg, MB