

TEXCAN

A Sonepar Company



WIRE & CABLE FOR MINING APPLICATIONS

ELECTRICAL SUPPLY TO MEET DEMANDS FOR NATURAL RESOURCE COMMODITIES

Establishing and maintaining efficient and safe production can be a real challenge in the isolated, rugged, and even harsh climate environments where mining industries often operate. Texcan helps companies overcome these challenges, with extensive experience supplying both Canadian and worldwide mine operations from gold to potash. As a leading wire and cable supplier, our industry specialized products are designed to adhere to safety regulations and avoid failures, even in harsh conditions.

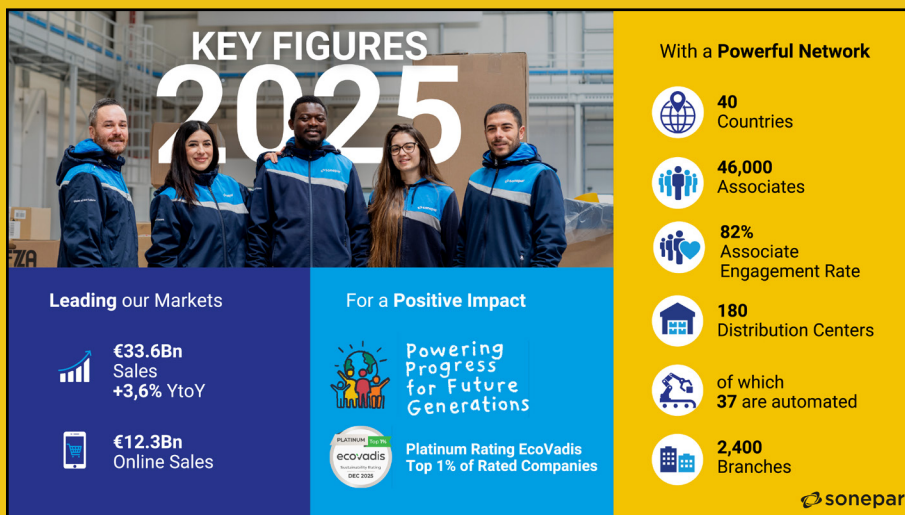
LOCAL INVENTORY, WHAT YOU WANT WHEN YOU NEED IT

Texcan offers mining cables that fits various applications including high voltage distribution in underground mines, areas requiring a high degree of flexing or that experience physical abuse, and on mining equipment such as shuttle cars, roof bolters, drills, and loading machines.

Texcan's Mining Cable range from 300V to 35KV. They are suitable for application facing extreme and severe conditions, commonly in the mining industry. Mining Cables are available in various constructions.



LOCAL EXPERTISE WITH A GLOBAL PRESENCE



Texcan is a proud member of the Sonepar Group. Founded in 1969, the Sonepar Group of companies is an independent family-owned company and global market leader in B to B distribution of electrical products, solutions, and related services. At Texcan, we recognize the importance of global connectivity in delivering exceptional service.

Together, we meet your wire and cable needs both locally and globally. Our dedicated team is passionate about supporting our customers' projects and contracts, ensuring their success and satisfaction.

We are Sonepar, "Powered by Difference".

INNOVATIVE SOLUTIONS BACKED BY EXPERTISE



Texcan is a leading provider of specialized wire and cable solutions for mining industry, offering expertise that goes beyond product capabilities.

Our team is composed of project specialists, our technical product team, and a product manager, all with years of invaluable project experience. Their exceptional knowledge ensures seamless integration and optimal performance, establishing Texcan as a reliable partner in efficiency and reliability of mining projects.

Reach out to Texcan's Specialists to recommend the most suitable products for specific applications, whether it involves finding suitable cables for underground mines or on mining equipment such as shuttle cars, roof bolters, drills, and loading machines.

ELECTRIFICATION OF MINING OPERATIONS

Texcan specializes in standard and unique installations, and has an in-house team that can provide solutions when it comes to the application, the environment, and electrification.

Our innovative approach enhances solutions for successful long term projects. Our specialists have been involved in the electrification process of the mining industry and can provide products for:

- **Overhead Catenary System**
- **Mining Truck Trolley System**
- **Mobile Equipment for harsh environments**
- **Above ground MV trailing cables**
- **RFID Tags**
- **Enhance safety with reflective tape and LED options**

PAST MINING EXPERIENCE



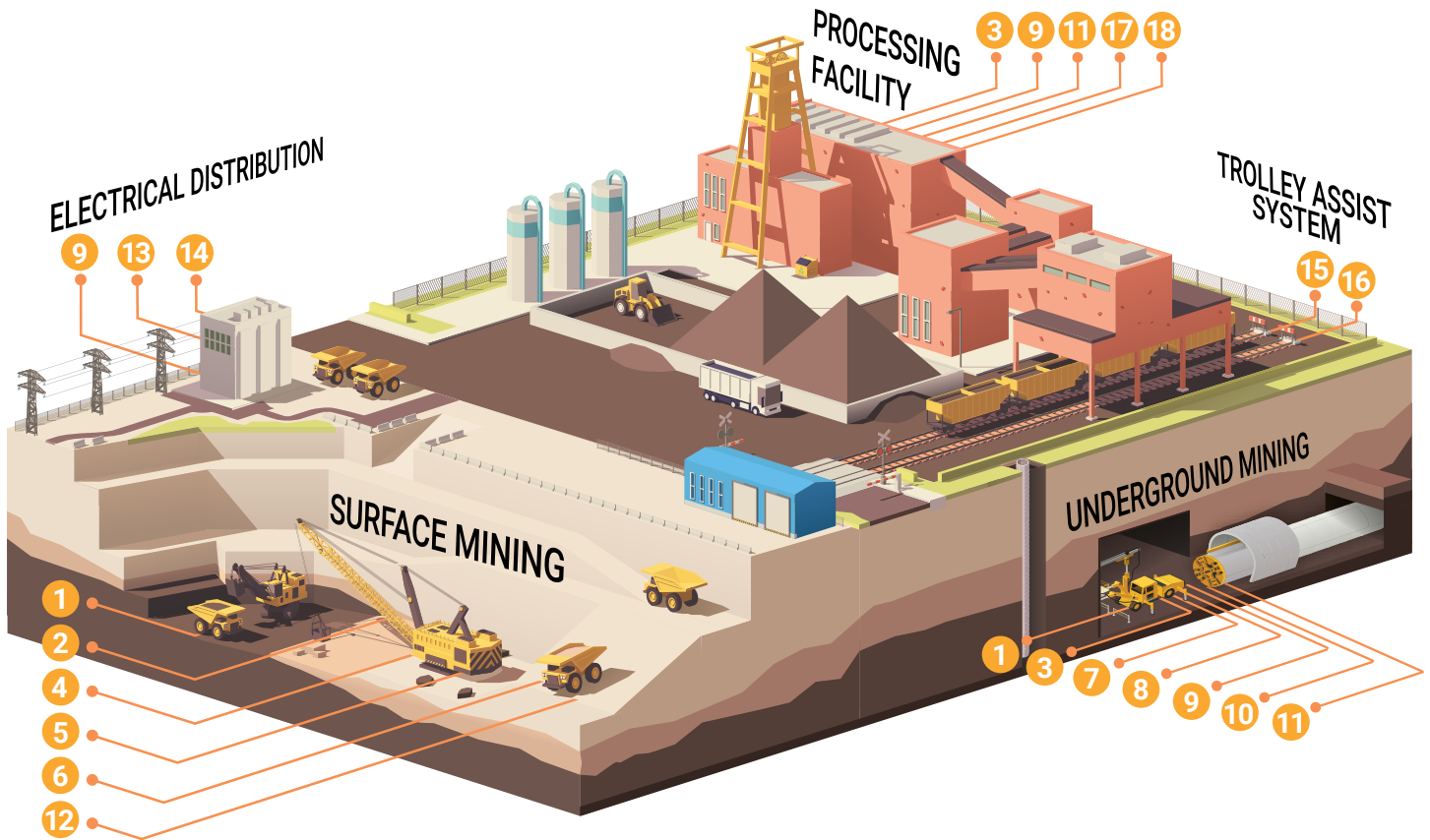
Copper Mine • Gold & Diamond Mines • Metals Mines • Mineral Mines • Nickel & Coal Mines • Potash Mines

CABLE ACCESSORIES


The complete range of approved cable accessories is available at Texcan. You can order your cable with factory-installed couplers or termination as well! Texcan can provide:

- Female and Male Couplers
- Splice Kits, Cold Shrink Construction
- Termination Kits, Indoor & Outdoor
- Trailing Cable Stands
- Skid Mounted Junction Boxes

CABLES FOR MINING APPLICATIONS




1



SHD-GC MV CABLE

CONDUCTOR TYPE	Tinned Copper
VOLTAGE	5kV, 8kV, 15kV, 25kV, 35kV
INSULATION	EPR
SHIELDING	Copper Braid Shield
JACKETS	CPE, TPU
GROUND WIRE	2X Tinned Copper
GROUND CHECK	Tinned Copper, Yellow Polypropylene Insulation
RATINGS	MSHA-CSA.22.2 No. 96., FT1, FT4, FT5, TC-ER, -50°C.


2



SHD-GC LV CABLE

CONDUCTOR TYPE	Tinned Copper
VOLTAGE	2KV
INSULATION	EPR
SHIELDING	Copper Braid Shield
JACKETS	CPE, TPU
GROUND WIRE	2X Tinned Copper
GROUND CHECK	Tinned Copper, Yellow Polypropylene Insulation
RATINGS	MSHA-CSA22.2 No. 96., FT1, FT5, FT4, TC-ER, -50°C.


3



MP MINE POWER FEEDER

CONDUCTOR TYPE	Bare Copper
VOLTAGE	5kV, 15kV, 25kV, 28kV, 35kV
INSULATION	XLPE
SHIELDING	Copper Tape Shield
JACKETS	PVC
RATINGS	MSHA-CSA 22.2 No96, FT5, -35°C


4



TYPE W MINING CABLE

CONDUCTOR TYPE	Tinned Copper or Bare Copper
VOLTAGE	Dual Rated 600V-2kV
INSULATION	EPR, EPDM
JACKETS	CPE
RATINGS	MSHA-CSA 22.2 No 96, FT1, FT5, -40°C


5



TYPE G-GC MINING CABLE

CONDUCTOR TYPE	Tinned Copper or Bare Copper
VOLTAGE	2kV
INSULATION	EPR, EPDM
JACKETS	CPE
GROUND WIRE	2X Tinned Copper
GROUND CHECK	Tinned Copper, Bare Copper, Yellow Polypropylene Insulation
RATINGS	MSHA 185, CSA 22.2 No 96, FT1, FT5, -40°C

6



TYPE G MINING CABLE

CONDUCTOR TYPE	Tinned Copper
VOLTAGE	2kV
INSULATION	EPR, EPDM
JACKETS	CPE
GROUND WIRES	Tinned Copper, Bare Copper
RATINGS	MSHA-CSA 22.2 No. 96, FT1, FT5, -40°C

CABLES FOR MINING APPLICATIONS

7



VERTICAL RISER TECK CABLE

CONDUCTOR TYPE	Bare Copper
VOLTAGE	600V, 1kV, 5kV, 15kV, 25kV, 28kV, 35kV
INSULATION	XLPE, TR-XLPE
JACKETS	PVC or LSZH
ARMOUR	Interlocked Aluminum Armour or Galvanized Steel Armour
RATINGS	CSA 22.2 No. 131/174, FT-4, HL

8



LOW VOLTAGE TECK90 CABLE

CONDUCTOR TYPE	Copper or Aluminum
VOLTAGE	600V, 1000V
INSULATION	XLPE
JACKETS	PVC or LSZH
ARMOUR	Interlocked Aluminum Armour or Galvanized Steel Armour
RATINGS	CSA 22.2 No. 131/174, FT-4, HL

9



MULTI-CONDUCTOR ARMOURED CONTROL

CONDUCTOR TYPE	Bare Copper
VOLTAGE	600V
INSULATION	XLPE
JACKETS	PVC or LSZH
ARMOUR	Interlocked Aluminum Armour
RATINGS	CSA 22.2 No. 239/174 FT-4, HL

10



AIRGUARD VFD CABLE

CONDUCTOR TYPE	Tinned Copper or Bare Copper
VOLTAGE	600V, 5kV, 8kV, 15kV, 25kV, 35kV
INSULATION	EPR
JACKETS	PVC
RATINGS	MSHA-CSA FT4, C68.10, C96.1 C22.2 No. 230 (TC)

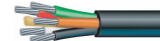
11



MV-105/TC Cable

CONDUCTOR TYPE	Bare Copper or Aluminum
VOLTAGE	5kV, 15kV, 25kV, 28kV, 35kV
INSULATION	EPR
SHIELDING	Copper Tape
JACKETS	PVC
RATINGS	CSA 22.2 #230, C68.10 TC-ER 1/0 & larger FT4

12



TYPE P-RIG CABLE

CONDUCTOR TYPE	Tinned Copper
VOLTAGE	600V, 1kV
INSULATION	EPR, XLPO
JACKETS	CPE, Neoprene, XL-CPE
ARMOUR	Braided Bronze or Unarmoured
RATINGS	CSA No. 245 Marine Shipyard-Transport Canada

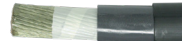
13



UTILITY DISTRIBUTION CABLE

CONDUCTOR TYPE	Aluminum Concentric ASTM or Steel Reinforced
VOLTAGE	Varying Dependant on High Voltage Transmission
STYLES	ACSR, ACSS, AAC/ASC, AAA/ASC Poly covered
JACKETS	Optional Jacketed Polyethylene
RATINGS	CSA

14



DLO CABLE

CONDUCTOR TYPE	Tinned Copper
VOLTAGE	2KV
INSULATION	EPR, EPDM
JACKETS	XL-CPE, EPDM-CPE
RATINGS	MSHA-CSA C22.2 No. 38 RW90, FT1, FT4 for 1/0 & Larger CSA 22.2 No. 230, TC

15



CATENARY CABLE

CONDUCTOR TYPE	HD-Cu, CuMg, CuAg
VOLTAGE	N/A
INSULATION	N/A
JACKETS	N/A
ARMOUR	N/A
RATINGS	ASTM, ANSI, EN

16



MESSENGER CABLE

CONDUCTOR TYPE	HD-Cu, CuMg
VOLTAGE	N/A
INSULATION	N/A
JACKETS	N/A
ARMOUR	N/A
RATINGS	ATSM, ANSI, EN

17



SJTOW/STOW ULTRAFLEX CORD

CONDUCTOR TYPE	Bare Copper
VOLTAGE	300V, 600V
INSULATION	PVC
JACKETS	Lead Free FR PVC Blue/Yellow Stripe
RATINGS	CSA FT2, -60°C to +60°C

18



CAT 5E, 6 SHIELDED COMMUNICATION CABLE

CONDUCTOR TYPE	Stranded or Solid Bare Copper
VOLTAGE	300V, 600V AWM
INSULATION	Polyolefin, Fluoropolymer
JACKETS	PVC
ARMOUR	Interlocked Aluminum Armour or Unarmoured
RATINGS	FT4-CMG, FT6-CMP, FT4 Riser -CMR, May be HL when armoured

When others can't, TEXCAN

WIRE & CABLE SPECIALISTS SINCE 1978

QUALITY ASSURANCE

Texcan is recognized for its commitment to quality assurance, demonstrated by our ISO9001:2015 and CSA certifications. These certifications affirm that our operations adhere to rigorous standards, ensuring the delivery of superior products and services to our customers.



ALL COMMITTED, ALL COMPLIANT

Complying with legal and regulatory requirements is a challenge we meet. However, we not only rise to this challenge but go beyond it, because we make compliance and integrity a core, daily priority for our associates.

Texcan, a part of the Sonepar group, is committed to the highest ethical, social, and environmental standards. We aim to be a responsible corporate citizen in Canada.



OUR MISSION IN SUSTAINABILITY

Today, Sonepar is the world number one in sales of energy-efficient products. We are one of the leading pioneers of the energy transition, making sustainability a priority. How we take action in Canada:

LOW CARBON FLEET

Texcan has completed a four-year fleet transition project by replacing 94% of its propane forklift fleet with electrical, which has led to a reduction in propane consumption by 87%.

GHG EMISSIONS REDUCTION

Reducing absolute scope 1 and 2 by 46.2% & scope 3 by 13.5% by 2030.

WASTE MANAGEMENT

Texcan implemented a wood waste recycling program. Wooden reels & pallets that cannot be reused are sent to a Biofuel facility for recycling.

ENERGY SAVING

LED lighting has been installed at more than 96% of company facilities, including offices, branches, and warehouses. Warehouses have been equipped with advanced lighting control systems.

CIRCULARITY

Implementing Zero Waste to Landfill strategy by 2030; establishing end of life for majority of materials.

SUSTAINABILITY COMMITTEE

The goal of this committee is to engage employees, make a meaningful impact on workplace culture, systematically work on an emissions reduction action plan, promote circularity, and continuously improve environmental sustainability.

LIVE 24/7, 365 DAY EMERGENCY SUPPORT

Texcan recognizes the crucial importance of continuous, year-round operations. We understand that during emergencies, disruptions can pose significant risks and expenses. That's why we are fully committed to delivering prompt assistance whenever it is required. Our dedicated team is available 24/7 to provide live help, ensuring that your operations can swiftly resume without any unnecessary delays.

To access our live assistance, call our toll-free number. We are ready to provide the support you need, anytime, anywhere.



CABLE MANAGEMENT PROGRAM

CUSTOM TAGGING

We offer custom reel tags with project specific item identifiers and details, easing material management. Options include weather-proof, color coded, stainless steel, printed RFID, or project specific templates.

SPECIALIZED PACKAGING

We can custom pack orders according to almost any specifications. Whether it's specified reel sizes, bug-free reels, or shrink wrapped pallets, we make sure it's packed right.

LOCAL AND INTERNATIONAL LOGISTICAL EXCELLENCE

Our team ensures your shipping standards, including custom packaging, are monitored, and met while keeping your project schedule in mind.

LAGGING

For long-distance transit, including export, bad weather, and rough terrain, we use wood covers or other suitable durable packaging to protect the reels.

CABLE JACKET IDENTIFIER

Special jacket printing (project name, etc.), numbering (site location code), striping, and colour-coding are some of the ways we tailor products to fit your project needs.

WEATHER PROTECTION FOR CABLE ENDS

We provide solutions to protect cable ends from weather exposure, including various types of end caps, tape, or even exposed ends for site testing.

REPORTING AND DOCUMENTATIONS

We offer custom reporting, including electronic data books, manufacturing data, quality compliance, expediting, and status updates.



PRODUCT SOURCING

Texcan's preferred partners are selected based on their reputation for excellence, reliability, and expertise in their respective fields. These partnerships are built on mutual trust, shared values, and a commitment to delivering exceptional customer experiences.

By collaborating with industry-leading manufacturers and suppliers, Texcan ensures that it consistently offers outstanding products and solutions to its diverse customer base.



Building Wire

- AC90 Armoured Cable
- Fire Alarm Cable
- ACWU Armoured Cable
- NMD90/NMWU90 Cable
- Solid/Stranded Bare Copper
- SIMpull Solutions®
- RW90/RWU 90 CU / AL
- T90 CU/TW75/TWH/TWU
- LVT
- Grounding Cable
- Pump Cable
- Copperweld Cable

Control Cables

- Multi-conductor
 - Armoured/Unarmoured
- Portable Control Cable
- Shielded Control Cable
- Custom Bundling/Armouring

Communication

- Computer Cable
- Inside/Outside Plant Wire
- Telephone Cable
- Plenum Cable
- Direct Burial

Data Cables

- Category 5E, 6, 6A, 7 Rated Cable
- Co-Axial/Twin-Axial Cable
- Ethernet Cable
- Network Cable
- Patch Cords (Copper/Fiber Optic)
- Armoured Data Cable

Electronic Cables

- Armoured Cable
- Audio/Visual Cable
- Broadcast Cable
- Coaxial/Twin-Axial Cable
- Low Capacitance Wire
- Plenum Wire
- Precision Video Wire
- Industrial Automation Cable
- Belden® Classics & NewGen

Fiber Optic Cables

- SM/MM
- Loose Tube, Tight Buffer
- Indoor/Outdoor/Riser/ADSS
- Armoured/Non-Armoured
- Hybrid Fiber
- Specialty XPRLTM/RLTM

Instrumentation

- Armoured/Unarmoured
 - Aluminum/Interlocked Steel
- Multi-conductor/Pairs/Triads
- Shielded/Unshielded
- Thermocouple Wire

Marine Cables

- Boat Cable
- Shipboard Cable
- Offshore Rig/Marine Cable

Mining Cables

- Blasting Wire
- Mine Power Feeder Cable
- Portable Power Cable
 - Type W, G, GGC, SHDGC (2KV to 35 KV)
- Trailing Cable
- Cable Assemblies
- Vertical Riser Cable
- Reeling Cable
- DLO (Diesel Locomotive Cable)

Portable Cords

- High Temperature Cable
- Ultraflex™ Low Temperature Cord
- Ultraflex™ Extension Cord
- Retractable Cord
- Type: SJOOW, SOOW, SJTOW, STOW
- Welding Cable
- Stage Lighting
- Landscape Lighting
- Multi-conductor
- Jumper Cable

Power Cables

- ACSR/AAC Linewire
- High Voltage Power Cable (69-300kv)
- TECK 90 HL Cable (600V-35KV)
- Overhead Service (NS75 / NS90)
 - Duplex, Triplex, Quadruplex
- Underground Service
 - USE1, USEB
- Variable Frequency Drive (VFD) Cable

- Tray Cable (5KV-35KV)
 - Power Cable (NFPA. 130)
- Underground Distribution
- Utility Hydro Cable
- Airguard™ Cable

Specialty Products & Cords

- 2-Hour Fire Rated VITALink® Cable
- 2-Hour Fire Rated Duralife® Cable
- Coil Lead Wire
- European Cables (CE & VDE approved)
- Extra Flexible Portable Cable
- Heat Trace Cables & Accessories
- Low Smoke Zero Halogen Cable
- Parallel Conductor Cord
- RPVU90 Solar Cable
- SIS Switchboard Wire
- Small Diameter Flexible Control (SDN)
- Automotive Cable
- Battery Cables
- Guy Wire & Strand
- Mil Spec Hookup Wire
- Pendant Cables/Festoon
- Teflon® Insulated Wire
- TEW Equipment Wire
- Tracer Wire
- Trailer Cable
- TR64

Transportation

- Catenary Cable
- Messenger Cable
- Signal Cable
- Track Wire
- Traction Power Cable
- Traffic Signal Cable CLMTO/IMSA

Additional Services & Accessories

Tools & Equipment

- Material Handling & Storage
- Cable Pulling & Fishing

Power Management

- Extension Cords
- Temporary Power Distribution

Lighting

- Area Lights
- String Lights
- Temporary Overhead Lighting

Connectors

- Armoured Cable Connectors
- Explosion-proof Connectors
- Strain Reliefs Metal & Nylon
- Tray Cable Connectors

Accessories

- Hardware, Lugs, Cable Ties
- 3M Accessories
 - Cold Shrink Splices and Terminations
 - Heat Shrink Splices and Terminations
 - Full Line of Accessories Available
- High Voltage Termination Kit
- Split Loom

Value Added Services

- Custom-Built Cables
- Cable Management Program
- Specialized Technical Assistance
- 24/7 Emergency Shipping Service
- International Export Services
- Custom Cables/Printing/Cutting
- Paralleling/Lagging/Tagging
- Bundling/Armouring
- Bar Coding and Inventory Tracking
- State-of-the-Art Distribution Centre

Visit our website at Texcan.com and social media @[TexcanCanada](https://www.instagram.com/TEXCANCanada)

VANCOUVER

1-800-665-1025
10449 120th St. Surrey, BC

MAJOR PROJECTS GROUP

1-888-818-9473
10449 120th St. Surrey, BC

EDMONTON

1-800-252-7545
11330 189 St. NW. Edmonton, AB

CALGARY

1-855-717-3900
190-11600 Stonehill Dr. NE Calgary, AB

SASKATOON

1-855-385-3800
3403 Faithfull Ave. Saskatoon, SK

WINNIPEG

1-800-665-2491
25 Meridian Dr. Winnipeg, MB