



TEXCAN

A Sonepar Company

UTILITY DISTRIBUTION CATALOGUE

Wire & Cable Specialists

Our Commitment

Our commitment to our customers is simple - **we deliver even when others can't.**

As one of Canada's largest wire, cable and data communication distributors for over 40 years, Texcan supplies solutions for automotive, power distribution, control, industrial automation, commercial, residential, premise wiring and networking applications. Our commitment to superior customer service is the number one reason customers keep coming back.

Our parent company, Sonepar, is a major global electrical distributor, with divisions in 40 countries, 5 continents, over 45,000 associates and 2,800 branches.

Dedicated to Our Customers

Texcan understands that business is done between people. We consider a job finished when the customer is completely satisfied. This approach highlights our commitment to quality and our high level of customer service. This winning combination focuses on a personalized approach to our customers.

Product Expertise and Specialized Services

Texcan has five stocking locations in Western Canada. With over 200 employees, Texcan is able to provide product application expertise,

specialized technical assistance and superior sales service to meet our customers' needs.

We constantly strive to bring value to our customers. We provide:

- An extensive range of stock wire products
- Computerized order processing
- Regionalized bar coded warehousing
- Competitive pricing
- Inventory tracking technology
- JIT inventory

Strategic Partnerships

Texcan has worked hard to develop partnerships with customers and vendors and continues to be committed to developing such strategic alliances. These partnerships provide Texcan with a successful and proven record with some of the largest customers in the pulp and paper, mining, petrochemical, transportation, and communication industries.

Thanks to our relationships with key vendors such as: Prysmian Group, Southwire, Belden, Northern Cables, Deca Cables, and PTI Cables Inc., Texcan is able to offer its customers a diverse selection of quality products. We are confident we can continue to be your successful partner now and in the future.

Over 40 Years of Service

Prysmian
Group



BELDEN
SENDING ALL THE RIGHT SIGNALS

northern
cables
INCORPORATED

DECA
CABLES

CABLES  CABLES INC.

Table of Contents

| | Page No. |
|---|----------|
| Utility Cable | 4 |
| ACSR | 5 |
| Duplex NS75 | 6 |
| Triplex NS75 | 7 |
| Quadruplex NS75 | 8 |
| Guy Wire Grade 180 | 9 |
| Polyline | 10 |
| USEI-90 | 11 |
| USEB-90 | 12 |
| Technical Information - Metric Conversions | 13 |

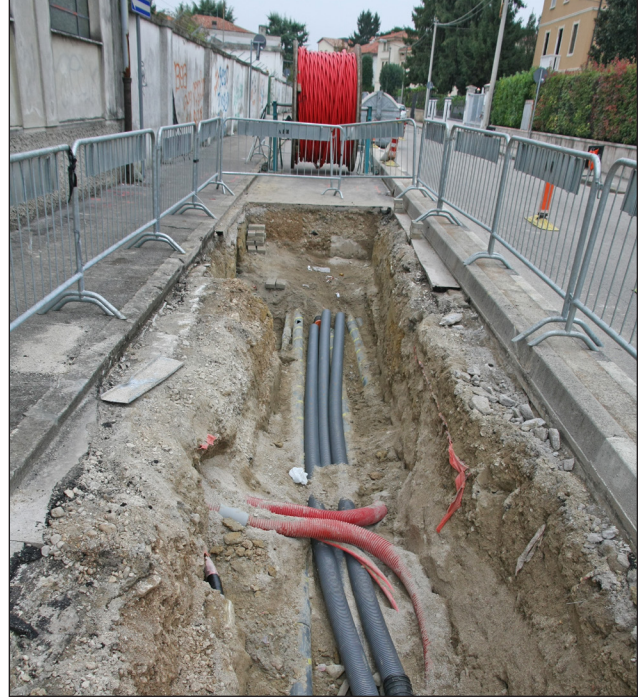
To Place an Order - For many of the products in the catalogue, you will find everything that you need to place an order. Should you need any assistance or require special orders, please contact your sales representative. A complete list of our sales offices can be found on the back cover of this catalogue.

Introduction

Utility distribution cables range from low to high voltage and are used for power generation, distribution and transmission. Power and underground distribution cables typically have stranded aluminum or copper conductors, with cross-linked polyethylene (XLPE) or ethylene polypropylene rubber (EPR) insulation. This provides dependable performance under adverse weather conditions. Power cables have a copper tape shield, while utility wires and cables may be shielded or unshielded. Distribution wire cables are concentric neutral.

Applications

Power and utility cables are used across a broad range of industries in overhead and underground applications, for power transmission, distribution and generation. ACSR cables are used as bare overhead transmission cables. USEI and USEB underground service cables are used in residential, commercial and industrial farm distribution systems, oil pump jacks and irrigation systems. N575 cables are used to deliver power from overhead lines or transformers to service entrance conductors at buildings or other structures.



Specifications

- CSA C49.2 (ACSR) - smooth body
- CSA C61089 (ACSR)
- CSA C22.2 No. 129 (Duplex, Triplex, Quadruplex) N575
- CAN/CSA C61089 (Duplex, Triplex, Quadruplex) N575
- CSA C22.2 No 52 (USEI-90 and USEB-90)

CAUTION NOTICE

In case of fire, well maintained early warning smoke detectors will give an alarm long before non-metallic coverings become combustible. However, the Electrical and Electronic Manufacturers Association of Canada has suggested that all purchasers of PVC insulated / jacketed products be advised of the following:

- Non-metallic coverings of electrical cables can burn and may transmit fire when ignited.
- Burning non-metallic coverings may emit acid gases which are toxic and may generate dense smoke.
- Emission of acid gases may corrode metal in the vicinity e.g. sensitive instruments and reinforcing rods in cement.

The installer and/or user assumes all liability for the consequences of the installation and/or use of any of the products in violation of any applicable law, regulation, or code.

ACSR Utility Distribution Cable



SPECIFICATIONS

- CSA C49.2 - smooth body
- CSA C61089
- ASTM



CONSTRUCTION

Conductor: Aluminum Concentric- lay- stranded around an inner core of galvanized steel wire(s)

Options: Standard reel and long lengths available upon request. Other options include: Smooth Body ACSR, ACSS, AAC/ASC and AAA/ASC Poly Covered

| Part Number | Code Word | Conductor AWG Size | Nominal Weight | | Stranding No x Dia | | Cross section (sq in) TOTAL | Approx Diameter | |
|---------------|-----------|--------------------|----------------|-------|--------------------|------------|-----------------------------|-----------------|------|
| | | | (LBS/MFT) | kg/km | ALUM (in) | STEEL (in) | | (in) | (mm) |
| 25001-02-000 | SWAN | 4 | 57 | 85 | 6x.0834 | 1x.0834 | 0.0383 | 0.250 | 6.4 |
| 25001-04-4140 | HADDOCK | 2 | 121 | 180 | 6x.1490 | 1x.1490 | 0.0695 | 0.308 | 7.8 |
| 25001-04-4160 | SPARROW | 2 | 91.3 | 136 | 6x.1052 | 1x.1052 | 0.0608 | 0.316 | 8.0 |
| 25001-07-000 | RAVEN | 1/0 | 145 | 216 | 6x.1327 | 1x.1327 | 0.0967 | 0.398 | 10.1 |
| 25001-08-000 | QUAIL | 2/0 | 183 | 273 | 6x.1489 | 1x.1489 | 0.1219 | 0.447 | 11.4 |
| 25001-09-1640 | PIGEON | 3/0 | 231 | 344 | 6x.1672 | 1x.1672 | 0.1537 | 0.502 | 12.8 |
| 25001-10-000 | PENGUIN | 4/0 | 291 | 434 | 6x.1878 | 1x.1878 | 0.1939 | 0.563 | 14.3 |
| 25001-12-2440 | PARTRIDGE | 266.8 | 367 | 547 | 26x.1013 | 7x.0788 | 0.2436 | 0.642 | 16.3 |
| 25001-13-000 | LINNET | 336.4 | 462 | 689 | 26x.1137 | 7x.0884 | 0.3070 | 0.720 | 18.3 |
| 25001-19-000 | IBIS | 397.5 | 545 | 813 | 26x.1236 | 7x.0961 | 0.363 | 0.783 | 19.9 |
| 25001-15-000 | HAWK | 477 | 655 | 977 | 26x.1354 | 7x.1053 | 0.4357 | 0.858 | 21.8 |
| 25001-15-001 | PELICAN | 477 | 518 | 772 | 18x.1628 | 1x.1628 | 0.3954 | 0.814 | 20.7 |
| 25001-16-000 | DOVE | 556.5 | 764 | 1139 | 26x.1463 | 7x.1138 | 0.5083 | 0.927 | 23.5 |
| 25001-37-000 | DRAKE | 795 | 1091 | 1627 | 26x.1749 | 7x.1360 | 0.7264 | 1.108 | 28.1 |
| 25001-39-000 | CURLEW | 1033.5 | 1328 | 1981 | 54x.1383 | 7x.1383 | 0.9169 | 1.245 | 31.6 |

Note: All dimensions are nominal and are subject to normal manufacturing tolerance. Specifications are subject to change without prior notice.

Duplex Utility Distribution Cable NS75



SPECIFICATIONS

- CSA C22.2 No. 129
- CAN/CSA C61089



CONSTRUCTION

Conductor: Compact aluminum

Insulation: Linear low-density Polyethylene (LLDPE)

Voltage: 600V

Bare Neutral: Aluminum conductor steel reinforced (ACSR) stranded neutral conductor is Class A smooth body compact stranded

Options: Available in NS90, PVC jacketed phase conductors, and covered neutral upon request

| Part Number | Phase Conductor | | | | ACSR Compact Bare | | | Approx Diameter | | Net Weight | |
|--------------|-----------------|---------|-------------------------------|------------------------------|-------------------|---------|------------------------|-----------------|------|------------|---------|
| | AWG | OD (mm) | Min Insulation Thickness (mm) | Nominal Insulation O.D. (mm) | AWG | Neutral | Neutral Cond. O.D (mm) | (in) | (mm) | (LBS/MFT) | (KG/KM) |
| 09033-02-000 | 6 | 4.29 | 1.04 | 6.63 | 6 | Full | 5 | 0.47 | 12 | 74 | 111 |
| 09033-04-000 | 4 | 5.41 | 1.04 | 7.75 | 4 | Full | 6.4 | 0.55 | 14 | 113 | 169 |

Note: All dimensions are nominal and are subject to normal manufacturing tolerance. Specifications are subject to change without prior notice.

Triplex Utility Distribution Cable NS75



SPECIFICATIONS

- CSA C22.2 No. 129
- CAN/CSA C61089



CONSTRUCTION

Conductor: Two compact, insulated aluminum conductors

Insulation: Linear low-density Polyethylene (LLDPE)

Voltage: 600V

Bare Neutral: Aluminum conductor steel reinforced (ACSR) stranded neutral conductor is Class A smooth body compact stranded.

Options: Available in NS90, PVC jacketed phase conductors, and covered neutral upon request

| Part Number | Phase Conductor | | | | ACSR Compact Bare | | | Approx Diameter | | Net Weight | |
|---------------|-----------------|---------|-------------------------------|------------------------------|-------------------|---------|------------------------|-----------------|------|------------|---------|
| | AWG | OD (mm) | Min Insulation Thickness (mm) | Nominal Insulation O.D. (mm) | AWG | Neutral | Neutral Cond. O.D (mm) | (in) | (mm) | (LBS/MFT) | (KG/KM) |
| 09033-12-000 | 6 | 4.29 | 1.10 | 6.65 | 6 | Full | 4.60 | 0.51 | 13 | 75 | 112 |
| 09033-13-000 | 4 | 5.41 | 1.04 | 7.75 | 4 | Full | 6.35 | 0.62 | 16 | 169 | 252 |
| 09033-13-000R | 4 | 5.41 | 1.04 | 7.75 | 6 | Reduced | 5.03 | 0.59 | 15 | 147 | 220 |
| 09033-14-000 | 2 | 6.88 | 1.04 | 9.14 | 2 | Full | 8.11 | 0.74 | 19 | 257 | 383 |
| 09033-14-000R | 2 | 6.81 | 1.04 | 9.14 | 4 | Reduced | 6.35 | 0.70 | 18 | 223 | 333 |
| 09033-16-000 | 1/0 | 8.53 | 1.37 | 11.60 | 1/0 | Full | 10.10 | 0.94 | 24 | 403 | 601 |
| 09033-16-000R | 1/0 | 8.53 | 1.37 | 11.60 | 2 | Reduced | 8.11 | 0.90 | 23 | 354 | 527 |
| 09033-17-000 | 2/0 | 9.65 | 1.37 | 12.60 | 2/0 | Full | 11.50 | 1.06 | 27 | 504 | 751 |
| 09033-18-000 | 3/0 | 10.70 | 1.37 | 13.80 | 3/0 | Full | 12.80 | 1.14 | 29 | 625 | 931 |
| 09033-19-000 | 4/0 | 12.10 | 1.37 | 15.20 | 4/0 | Full | 14.30 | 1.26 | 32 | 777 | 1157 |

Note: All dimensions are nominal and are subject to normal manufacturing tolerance.
Specifications are subject to change without prior notice.

Quadruplex Utility Distribution Cable NS75



SPECIFICATIONS

- CSA C22.2 No. 129
- CAN/CSA C61089



CONSTRUCTION

Conductor: Three compact, insulated aluminum conductors

Insulation: Linear low-density Polyethylene (LLDPE)

Voltage: 600V

Bare Neutral: Aluminum conductor steel reinforced (ACSR) stranded neutral conductor is Class A smooth body compact stranded

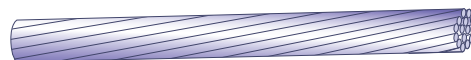
Options: Available in NS90, PVC jacketed phase conductors, and covered neutral upon request

| Part Number | Phase Conductor | | | | ACSR Compact Bare | | | Approx Diameter | | Net Weight | |
|--------------|-----------------|---------|-------------------------------|------------------------------|-------------------|---------|------------------------|-----------------|------|------------|----------|
| | AWG | OD (mm) | Min Insulation Thickness (mm) | Nominal Insulation O.D. (mm) | AWG | Neutral | Neutral Cond. O.D (mm) | (in) | (mm) | (LBS/ MFT) | (KG/ KM) |
| 09033-22-000 | 6 | 4.29 | 1.04 | 6.63 | 6 | Full | 5.03 | 0.59 | 15 | 150 | 224 |
| 09033-23-000 | 4 | 5.41 | 1.04 | 7.75 | 4 | Full | 6.35 | 0.71 | 18 | 225 | 335 |
| 09033-24-000 | 2 | 6.81 | 1.04 | 9.14 | 2 | Full | 8.11 | 0.82 | 21 | 340 | 507 |
| 09033-26-000 | 1/0 | 8.53 | 1.37 | 11.6 | 1/0 | Full | 10.10 | 1.06 | 27 | 539 | 803 |
| 09033-27-000 | 2/0 | 9.65 | 1.37 | 12.6 | 2/0 | Full | 11.50 | 1.00 | 30 | 665 | 991 |
| 09033-28-000 | 3/0 | 10.7 | 1.37 | 13.8 | 3/0 | Full | 12.80 | 1.29 | 33 | 822 | 1224 |
| 09033-29-000 | 4/0 | 12.1 | 1.37 | 15.2 | 4/0 | Full | 14.30 | 1.42 | 36 | 1020 | 1519 |

Note: All dimensions are nominal and are subject to normal manufacturing tolerance. Specifications are subject to change without prior notice.

Guy Wire Utility Distribution Cable

Grade 180



CONSTRUCTION

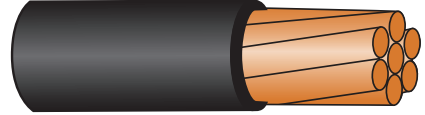
Conductor: Galvanized Steel

Options: Grade 160, Grade 220, Grade 1300

| Part Number | Diameter (in.) | Stranding | Net Weight | | Min. Breaking Load |
|--------------|----------------|-----------|------------|---------|--------------------|
| | | | (LBS/MFT) | (KG/KM) | |
| 06001-03-000 | 3/16 | 7 x 0.095 | 79 | 118 | 4000 |
| 06001-04-000 | 1/4 | 7 x 0.083 | 129 | 192 | 6400 |
| 06001-05-000 | 5/16 | 7 x 0.109 | 223 | 332 | 11100 |
| 06001-05-002 | 9/32 | 7 x 0.095 | 169 | 251 | 8500 |
| 06001-06-000 | 3/8 | 7 x 0.120 | 270 | 402 | 13500 |
| 06001-07-000 | 7/16 | 7 x 0.144 | 389 | 579 | 19500 |
| 06001-08-000 | 1/2 | 7 x 0.165 | 511 | 760 | 25500 |
| 06002-05-001 | 5/8 | 7 x 0.207 | 813 | 1210 | 40200 |

Note: All dimensions are nominal and are subject to normal manufacturing tolerance. Specifications are subject to change without prior notice.

Polyline Utility Distribution Cable



SPECIFICATIONS

- ASTM

CONSTRUCTION

Conductor: Copper Conductor, solid or stranded, soft (annealed), medium hard, or hard drawn

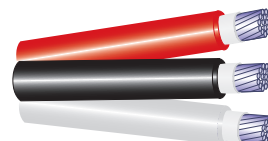
Outer Jacket: High Molecular Weight Polyethylene (HMW-PE)

| Part Number | Conductor AWG Size | Stranding | Diameter (in) | Net Weight | | Temper |
|--------------|--------------------|-----------|---------------|------------|---------|--------|
| | | | | (LBS/MFT) | (KG/KM) | |
| 25020-06-000 | 10 | 1 | 0.20 | 219 | 325 | SD |
| 25022-01-000 | 6 | 1 | 0.22 | 86.7 | 129.02 | SD |
| 25022-02-000 | 4 | 1 | 0.26 | 135.2 | 90.85 | SD |
| 25022-02-001 | 4 | 1 | 0.26 | 135.2 | 90.85 | MHD |
| 25024-05-004 | 2 | 1 | 0.35 | 218.3 | 324.87 | MHD |
| 25024-06-001 | 1/0 | 7 | 0.49 | 357.5 | 532.02 | MHD |
| 25024-07-002 | 2/0 | 7 | 0.53 | 446.1 | 663.87 | MHD |
| 25024-17-000 | 4/0 | 7 | 0.64 | 696.4 | 1036.36 | MHD |

Note: All dimensions are nominal and are subject to normal manufacturing tolerance. Specifications are subject to change without prior notice.

USEI-90 Utility Distribution Cable

(Reduced/Full)



SPECIFICATIONS

- CSA C22.2 No 52
- FT1



CONSTRUCTION

Conductor: Aluminum stranded Class B compact aluminum

Insulation: Cross-linked Polyethylene (XLPE)

Outer Jacket: Polyvinyl Chloride (PVC)

Voltage: 600V

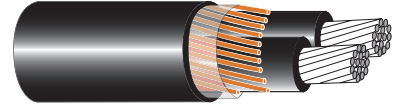
Bare Neutral: Aluminum stranded c/w white Polyvinyl Chloride (PVC) overall

Options: USEI-75

| Part Number | Phase Conductor | | Neutral Conductor | | | | Effective Diameter Thickness x Width (mm.) | Net Weight | |
|--------------|-----------------|-------------------|-------------------|---------|----------------------------|------------------------|--|------------|---------|
| | AWG | No. of Conductors | AWG | Neutral | Insulation Thickness (in.) | Jacket Thickness (in.) | | (LBS/MFT) | (KG/KM) |
| 09051-05-000 | 2 | 3 | 2 | Full | 0.05 | 0.02 | 23 | 309 | 460 |
| 09051-05-001 | 2 | 3 | 4 | Reduced | 0.04 | 0.02 | 23 | 282 | 420 |
| 09051-07-000 | 1/0 | 3 | 1/0 | Full | 0.05 | 0.04 | 30 | 510 | 760 |
| 09051-07-001 | 1/0 | 3 | 2 | Reduced | 0.04 | 0.02 | 29 | 443 | 660 |
| 09051-09-000 | 3/0 | 3 | 3/0 | Full | 0.05 | 0.04 | 35 | 739 | 1100 |
| 09051-10-000 | 4/0 | 3 | 4/0 | Full | 0.05 | 0.04 | 38 | 873 | 1300 |
| 09051-10-001 | 4/0 | 3 | 2/0 | Reduced | 0.05 | 0.04 | 36 | 772 | 1150 |
| 09051-15-000 | 250 | 3 | 250 | Full | 0.06 | 0.06 | 44 | 1108 | 1650 |
| 09051-17-000 | 350 | 3 | 350 | Full | 0.06 | 0.06 | 49 | 1478 | 2200 |
| 09051-17-001 | 350 | 3 | 250 | Reduced | 0.06 | 0.06 | 48 | 1343 | 2000 |
| 09051-18-000 | 500 | 3 | 500 | Full | 0.06 | 0.06 | 56 | 1948 | 2900 |
| 09052-05-001 | 2 | 4 | 4 | Reduced | 0.04 | 0.02 | 25 | 383 | 570 |
| 09052-07-001 | 1/0 | 4 | 2 | Reduced | 0.04 | 0.02 | 32 | 611 | 910 |
| 09052-10-000 | 4/0 | 4 | 4/0 | Full | 0.05 | 0.04 | 42 | 1142 | 1700 |
| 09052-10-001 | 4/0 | 4 | 2/0 | Reduced | 0.05 | 0.04 | 41 | 1075 | 1600 |
| 09052-15-001 | 250 | 4 | 3/0 | Reduced | 0.05 | 0.04 | 47 | 1343 | 2000 |
| 09052-17-000 | 350 | 4 | 350 | Full | 0.15 | 0.06 | 55 | 1948 | 2900 |
| 09052-17-001 | 350 | 4 | 250 | Reduced | 0.06 | 0.06 | 54 | 1814 | 2700 |
| 09052-18-001 | 500 | 4 | 350 | Reduced | 0.06 | 0.06 | 61 | 2419 | 3600 |

Note: All dimensions are nominal and are subject to normal manufacturing tolerance.
Specifications are subject to change without prior notice.

USEB-90 Utility Distribution Cable (Reduced)



SPECIFICATIONS

- CSA C22.2 No 52
- FT1



CONSTRUCTION

Conductor: Aluminum stranded, Class B compact or compact soft drawn copper

Insulation: Cross-linked Polyethylene (XLPE)

Outer Jacket: Polyvinyl Chloride (PVC)

Voltage: 600V

Bare Neutral: Annealed, plain copper wires

Options: Full Neutral available upon request
USEB Reduced Neutral splice kits available upon request

| Part Number | Conductor Type | Conductor AWG Size | Reduced Neutral Conductor No. Wires x Size (AWG) | Effective Diameter Thickness x Width | | Net Weight | |
|--------------|----------------|--------------------|--|--------------------------------------|---------|------------|---------|
| | | | | (in) | (mm) | (LBS/MFT) | (KG/KM) |
| 09054-03-011 | Copper | 4 | 11 x 16 | 0.551 x 0.866 | 14 x 22 | 691 | 1029 |
| 09054-05-011 | Copper | 2 | 17 x 16 | 0.987 x 0.629 | 25 x 16 | 897 | 1336 |
| 09054-07-011 | Copper | 1/0 | 26 x 16 | 1.141 x 0.745 | 29 x 19 | 1237 | 1841 |
| 09055-03-011 | Aluminum | 4 | 9 x 16 | 0.590 x 0.905 | 15 x 23 | 282 | 420 |
| 09055-05-011 | Aluminum | 2 | 11 x 16 | 0.629 x 1.023 | 16 x 26 | 369 | 550 |
| 09055-07-011 | Aluminum | 1/0 | 17 x 16 | 0.748 x 1.181 | 19 x 30 | 538 | 800 |
| 09055-08-011 | Aluminum | 2/0 | 21 x 16 | 0.787 x 1.299 | 20 x 33 | 638 | 950 |
| 09055-10-011 | Aluminum | 4/0 | 33 x 16 | 0.866 x 1.496 | 22 x 38 | 940 | 1400 |
| 09055-14-011 | Aluminum | 300 | 21 x 10 | 1.102 x 1.811 | 28 x 46 | 1344 | 2000 |

*Note: All dimensions are nominal and are subject to normal manufacturing tolerance.
Specifications are subject to change without prior notice.*

AWG to Metric Conversion Chart

| AWG | mm ² | AWG | mm ² | AWG | mm ² | AWG | mm ² |
|-----|-----------------|-----|-----------------|-----|-----------------|------|-----------------|
| 28 | 0.08 | 14 | 2.08 | 2 | 33.63 | 300 | 152.01 |
| 26 | 0.13 | 12 | 3.31 | 1 | 42.41 | 350 | 177.35 |
| 24 | 0.20 | 10 | 5.26 | 1/0 | 53.51 | 400 | 202.68 |
| 22 | 0.32 | 8 | 8.37 | 2/0 | 67.44 | 500 | 253.35 |
| 20 | 0.52 | 6 | 13.30 | 3/0 | 85.03 | 600 | 304.02 |
| 18 | 0.82 | 4 | 21.15 | 4/0 | 107.22 | 750 | 380.03 |
| 16 | 1.31 | 3 | 26.66 | 250 | 126.68 | 1000 | 506.71 |

Length Conversions

| From | To | Multiply By | From | To | Multiply By |
|-------------|--------|-------------|--------|-------------|-------------|
| Kilometers | Miles | 0.06214 | Miles | Kilometers | 1.6093 |
| Meters | Feet | 3.2808 | Yards | Meters | 0.9144 |
| Meters | Inches | 39.3701 | Feet | Meters | 0.3048 |
| Meters | Yards | 1.0936 | Feet | Centimeters | 30.48 |
| Centimeters | Inches | 0.3937 | Inches | Meters | 0.0254 |
| Centimeters | Feet | 0.03281 | Inches | Centimeters | 2.54 |
| Millimeters | Inches | 0.03937 | Inches | Millimeters | 25.4 |
| Millimeters | Mils | 39.3701 | Inches | Mils | 1000.0 |
| Mils | Inches | 0.001 | Mils | Millimeters | 0.0254 |

Mass Conversions

| From | To | Multiply By | From | To | Multiply By |
|-----------|------------|-------------|------------|-----------|-------------|
| Kilograms | Pounds | 2.205 | Pounds | Kilograms | 0.4535 |
| Kilograms | Short Tons | 0.0011 | Short Tons | Kilograms | 907.1848 |
| Grams | Grains | 15.4323 | Grains | Grams | 0.0647 |
| Grams | Ounces | 0.0352 | Ounces | Grams | 28.3495 |

Length & Mass Conversions

| From | To | Multiply By |
|---------|---------|-------------|
| KG/KM | LBS/MFT | 0.6719 |
| LBS/MFT | KG/KM | 1.488 |

Temperature Conversions

| From | To | Multiply By |
|------------|------------|-----------------|
| Celsius | Fahrenheit | (°C x 9/5) + 32 |
| Fahrenheit | Celsius | (°F - 32) x 5/9 |

[illegible]

Our Value Added Services

Cable Management Program

- Competitive contract pricing
- Customer specified tagging requirements
- Customer specified reel sizes
- Custom cut lengths
- Long lengths capability
- Timely product releases
(reduces on-site storage space and costs)
- Product on-site scheduling
- Custom packing slips
- Bar coded product labels
- Weatherproof reel tags
- Expediting and progress reports

Specialized Technical Assistance

- Technical expertise on cable applications, installation procedures, ampacities, bending radii, terminations and cable selection

Customized Cable Solutions

- Special constructions built to customer specifications when requested

International Export Services

- Specialized export services, packaging, labeling, freight consolidation, customs advisory services and adherence to Incoterms 2010

Paralleling

- Offers a contractor a significant installation advantage in a single reel containing multiple phase conductors

Lagging

- A safe method of protecting cables that must be transported through rough terrain involving 2" x 4" lumber 'lags' which are fastened across the flanges encasing the cable reel

Pulling Eyes and Bolts

- A pulling line can be attached to the cable when requested to aid in the installation of cables into conduit, tray or duct

Just-In-Time (JIT)

- Just-in-time shipments to job sites across North America through our network of distribution warehouses
- Our stocking, cutting and shipment expertise ensure that your wire and cable requirements are satisfied and project delays eliminated

After Hours, Emergency Service

- We understand that our customers' needs don't always fall within the course of a normal business day, therefore we provide 24/7 service

Quality Service is Our
Source of Pride

Largest Stocked Inventory in Western Canada

Building Wire

- AC90 Armoured Cables
- Fire Alarm Cables
- ACWU Armoured Cables
- NMD90 / NMWU90 Cables
- Solid / Stranded Bare Copper
- RA90 / Armoured Cables CU / AL
- SIMpull Solutions®
- RW90 / RWU 90 CU / AL
- T90 CU / TW75 / TWH / TWU
- LVT

Connectors

- Armoured Cable Connectors
- Explosion-proof Connectors
- Strain Reliefs Metal & Nylon
- High Voltage Termination Kit
- Tray Cable Connectors

Control Cables

- Multiconductor
 - Armoured / Unarmoured
- Portable Control Cables
- Shielded Control Cables
- Custom Bundling / Armouring

Communication

- Computer Cables
- Inside / Outside Plant Wires
- Telephone Cables
- Plenum Cables
- Direct Burial

Data Cables

- Category 5E, 6, 6A, 7 Rated Cables
- Co-Axial / Twin-Axial Cables
- Ethernet Cables
- Network Cables
- Patch Cords (Copper / Fiber Optic)
- Armoured Data Cables

Electronic Cables

- Armoured Cables
- Audio / Visual Cables
- Broadcast Cables
- Low Capacitance Wires
- Plenum Wires
- Precision Video Wires
- Industrial Automation Cables
- Belden® Classics & NewGen

Fiber Optic Cables

- SM / MM
- Loose Tube, Tight Buffer
- Indoor / Outdoor / Riser / ADSS

- Armoured / Non-Armoured
- Hybrid Fiber
- Specialty XPRLTM / RLTM

Instrumentation Cables

- Armoured / Unarmoured
 - Interlocked Steel / Aluminum
- Multiconductor / Pairs / Triads
- Shielded / Unshielded

Marine Cables

- Boat Cables
- Shipboard Cables
- Offshore Rig / Marine Cables

Mining Cables

- Blasting Wires
- Mine Power Feeder Cables
- Portable Power Cables
 - Type W, G, GGC, SHDGC (2KV - 35 KV)
- Trailing Cables
- Cable Assemblies
- Vertical Riser Cables

Portable Cords

- High Temperature Cables
- Ultraflex™ Low Temperature Cords
- Ultraflex™ Extension Cords
- Retractable Cords
- Type: SJOOW, SOOW, SJTOW, STOW
- Welding Cables
- Stage Lighting
- Landscape Lighting
- Multiconductor

Power Cables

- ACSR / AAC Linewire
- High Voltage Power Cables
- Overhead Service (NS75 / NS90)
 - Duplex, Triplex, Quadruplex
- Underground Service
 - USEI, USEB
- TECK 90 HL Cables (600V - 35KV)
- Tray Cables
 - Power and Control
- Underground Distribution
- Airguard™

Specialty Wire / Products

- Coil Lead Wires
- European Cables (CE & VDE approved)
- 2HR Fire Rated
- VITALink® Fire Resistive
- Teflon® Insulated Wires
- SIS Switchboard Wires

- TEW Equipment Wires
- TR64
- Low Smoke Zero Halogen Cables
- Milspec Hookup Wires
- Tracer Wires
- Utility Hydro Cables
- Split Loom
- Automotive Cables
- Variable Frequency Drive (VFD) Cables
- Thermocouple Wires
- Heat Trace Cables
- Grounding Cables

Specialty Cords / Cables

- Extra Flexible Portable Cables
- Parallel Conductor Cords
- Small Diameter Flexible Control (SDN)
- Traffic Signal Cables CLMTO / IMSA
- Trailer Cables
- Airport Lighting Cables
- Battery Cables
- Diesel Locomotive Cables
- Reeling Cables
- Pendant Cables / Festoon

Custom-Built Cables

- Made to Customer Specifications

Accessories

- Hardware, Lugs, Cable Ties
- 3M Accessories

SIMPull Solutions®

- Maxis® 6K Tugger
- Maxis® 3K Tugger
- Maxis® Grips™
- QWIKrope®
- Swivel
- SIMpull™ REEL
- SIMpull HEAD®
- SIMpull® Flange
- SIMpull™ Cradle
- GRIPit™
- A Frame

VALUE ADDED SERVICES

- Cable Management Program
- Specialized Technical Assistance
- 24/7 Emergency Shipping Service
- International Export Services
- Custom Cables / Printing / Cutting
- Paralleling / Lagging / Tagging
- Bundling / Armouring
- Bar Coding and Inventory Tracking
- State-of-the-Art Distribution Centre



VANCOUVER

Call 1.800.665.1025
10449 120th Street
Surrey, BC V3V 4G4
Tel: 604.528.3600
Fax: 604.528.3790

EDMONTON

Call 1.800.252.7545
11330 189 Street NW
Edmonton, AB T5S 2V6
Tel: 780.944.9331
Fax: 780.486.3182

CALGARY

Call 1.855.717.3900
#105-10710 25th Street NE
Calgary, AB T3N 0A1
Tel: 403.717.3900
Fax: 403.717.3910

SASKATOON

Call 1.855.385.3800
3403 Faithfull Avenue
Saskatoon, SK S7K 8H6
Tel: 306.385.3800
Fax: 306.385.3810

WINNIPEG

Call 1.800.665.2491
25 Meridian Drive
Winnipeg, MB R2R 1J4
Tel: 204.982.9290
Fax: 204.661.8459