



University of
Sheffield

International
College



sheffield.ac.uk/international-college

Ambitious
students are
**made in
Sheffield.**

A Big Sheffield Welcome



Our ambitious students **thrive in our unique College environment.**



Join our **vibrant international community** at the International College, and become a part of the University of Sheffield from day one.



When you enrol at the University of Sheffield International College, **you are welcomed into student life.**



From day one, you can join the University's societies, **get involved with the award-winning Students' Union** or start your own club.



Teachers will monitor your progress and support you to **develop an appropriate pace of study and apply your skills.**



We look forward to welcoming you and helping you on your journey to **become who you are going to be.**

Our **staff are dedicated to supporting you**, providing the best possible introduction to studying in Sheffield.



If you enjoy the great outdoors, **exploring Sheffield's natural scenery is a must.**



Welcome! When you join the **University of Sheffield International College**, you will become a part of the University of Sheffield and our vibrant international community.

We've found that our ambitious students thrive in our unique College environment, which is based on the University's own academic structure and study cycle. Our experienced team of more than 200 academic and professional staff, alongside our excellent teaching facilities, **ensure that you are fully prepared for University life.**

Our staff are dedicated to supporting you, providing the **best possible introduction to studying in Sheffield.** Whatever your ambition, we look forward to welcoming you and helping you on your journey to **become who you are going to be.**

Kirsten Bartlett

College Director

Contents

1. A Big Sheffield Welcome
2. The University of Sheffield
4. Living in Sheffield
6. The International College
8. Campus facilities
10. Accommodation
12. **Undergraduate pathway**
13. **Business, Social Sciences and Humanities**
14. **Science and Engineering**
16. **Undergraduate progression degrees**
18. **Postgraduate pathway**
19. **Business, Social Sciences and Humanities**
21. **Science and Engineering**
22. **Postgraduate progression degrees**
25. Student insurance
25. How to apply

I'm going to be... in an amazing place to study

Get involved at the University of Sheffield and join a community known for its global reputation of exceptional teaching, impactful research, international outlook and dynamic student experiences.





Ranked 14th
in the UK

(Times Higher Education World University Rankings 2023)



A world top 100
university

(QS World University Rankings 2023)



92% of research
is world-leading
or internationally
excellent

(Research Excellence Framework 2021)



No.1 Students'
Union in the UK
for the fifth year
in a row

(Whatuni Student Choice Awards 2022, 2020, 2019, 2018, 2017)



A member of the
UK's prestigious
Russell Group,
one of 24 leading
UK universities
for research and
teaching



15 subjects ranked
in the world top 100

(QS World University Rankings by Subject 2022)



No.1 in the
Russell Group for
student satisfaction
in 11 subjects

(National Student Survey 2022)



Top 10 most targeted
UK university
by top employers

(High Fliers Research 2022)



Six Nobel Prize
winners in the fields
of Chemistry and
Medicine/Physiology



More than
30,000 students
from over
150 countries come
to the University of
Sheffield every year



Over 60,000
students are proud
to say, "I study in
Sheffield."

I'm going to be... living in Sheffield

A community-focused and friendly cultural hub in the north of England, with the Peak District on your doorstep, Sheffield has plenty to experience.

A student city

Sheffield is England's fifth largest city (World Population Review 2021) and is made up of 564,000 people – nearly 60,000 of which are students. This vibrant student community plays an active role in the life and feel of the city.

The cost of living here is one of the lowest compared to other student cities in the UK. The range of available student discounts, as well as low accommodation and leisure costs make Sheffield a very affordable place to live.

A welcoming university

When you enrol at the University of Sheffield International College, you are welcomed into student life. From day one, you can join the University's societies, start your own club or get involved with the award-winning Students' Union.

A city to discover

When you want to explore, the city welcomes you to – Sheffield doesn't hold back on things to do. Famous for its creativity, the city's music, art and film communities are bustling with activity.

Sheffield is large enough to offer a great range of activities, yet small enough to find your way around quickly and feel part of the community.

The UK's greenest city

If you enjoy the great outdoors, exploring Sheffield's natural scenery is a must. With 60% of Sheffield a green space, and the Peak District National Park a short bus or train ride away, there are lots of places to hike, climb or have a picnic.



England's 5th largest city



Population of 564,000 people – 60,000 of which are students



60% of the city is green space



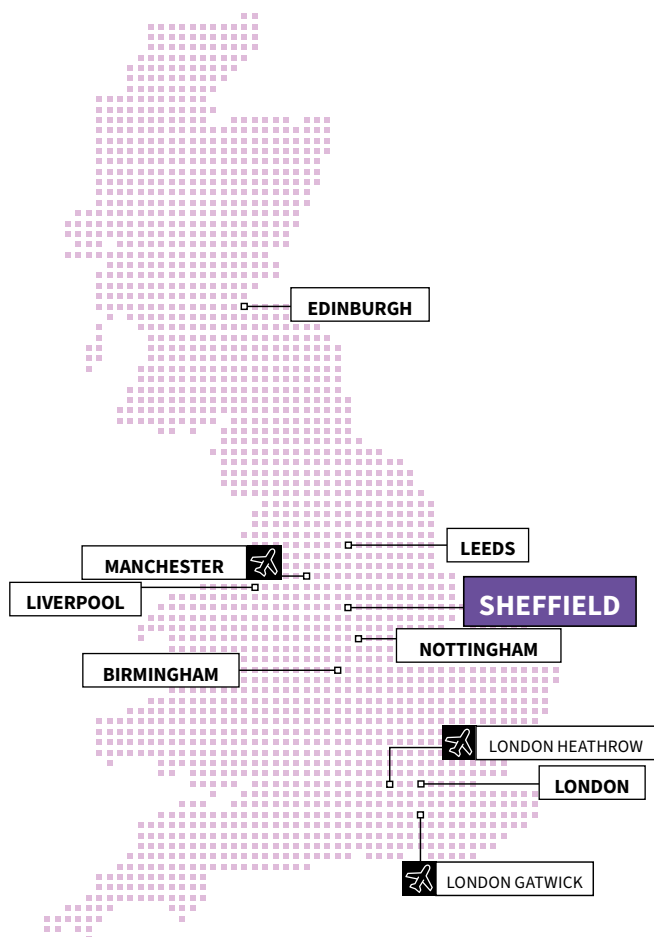
Joint 3rd most affordable student city in the UK*



Famous for its music, art and digital communities

*Student Living Index 2022 by NatWest

Sheffield is a friendly multicultural city located in the heart of the UK. Whether you're travelling by road, rail or air, Sheffield's excellent transport links allow you to experience UK life to the full.



Explore the UK by train from Sheffield to:

LEEDS	40 MINUTES
MANCHESTER	50 MINUTES
NOTTINGHAM	55 MINUTES
BIRMINGHAM	1 HOUR 10 MINUTES
LIVERPOOL	1 HOUR 50 MINUTES
LONDON	2 HOURS
EDINBURGH	3 HOURS 30 MINUTES



Born in Taiwan. / Made in Sheffield.

"Sheffield is a friendly city that allows you space and time for yourself. I think that's quite important for me. It's not big, but it has room for exploration and it's not slow because it's still a city. You still get the right amount of pace, the right amount of space, and that's quite important to me."

Rubin

Studied International Foundation Year.

Progressed to BSc (Hons) International Relations and Politics.

I'm going to be...
studying at the
International College



Join the community at the University of Sheffield International College – a dedicated place for ambitious international students to prepare for the challenges of academic life.

An extraordinary learning environment

At the University of Sheffield International College, we provide tailored pathway programmes for international students. During your time with us, we'll help you to:

- **Reach the academic level you need** in your chosen subject
- **Gain the study skills and independent learning techniques** that will be vital to your success at both the International College and on your chosen university degree
- **Develop your English language ability** so you can express yourself clearly, take part in lessons, and get the most out of your studies
- **Adapt to the UK education model** by studying in a semester-based system, aligned closely to the University's own teaching style.

Programmes at the International College are designed in collaboration with the University and are delivered by Study Group. Experts in international education, Study Group staff know how to support international students as they adjust to the UK education system. Once you have completed your programme successfully, you will progress to your chosen degree and be taught by University staff.

A transformative learning space

Our College is in the city centre, within walking distance of other university buildings and accommodation. College facilities include:

- **Over 40 classrooms** designed to support different classroom activities
- **Social study zones** for collaborative group work
- **The latest technology** including lecture capture facilities so you can rewatch classes
- **A laboratory** for science and engineering students.

Small class sizes with experienced tutors

You will study in small classes with teachers experienced in helping students learn in a second language. With a combination of lectures, tutorials, workshops, seminars, interactive learning and independent study, you will experience a wide range of learning methods similar to those at the University.

Teachers will monitor your progress and support you to develop an appropriate pace of study and apply your skills. We will encourage you to build your competence in using academic English on a daily basis and work collaboratively with staff and your fellow students.

The perfect introduction to studying abroad

You may find that there is a difference between how you have studied at home and how students have studied in the UK. You'll also need to be able to study your chosen subject in English. You may need time to get used to new ways of teaching and more styles of independent learning. And, you'll have to do all of this while getting used to how things work in a different country. This is why we are here to help you get used to your new surroundings.



From the moment you confirm your place, you will be part of the **Big Sheffield Welcome**. Arrival events, tours and activities will be available to help you get settled in, as well as orientation to make sure you complete all the steps of enrolment. This support will continue throughout your time at the International College, as you work towards progressing to the University.

Dedicated student support

We have over **200 members of staff** dedicated to supporting your success while you're studying here at the College.

Our **highly qualified academic staff** are experts in teaching students from across the world. You will have an academic tutor who will advise you on your strengths and areas for development throughout your programme.

Our **Student Support team** can also help you from the moment you arrive. They can arrange transport from the airport, organise induction activities and trips throughout the semester – and are also available to talk if you have any problems.

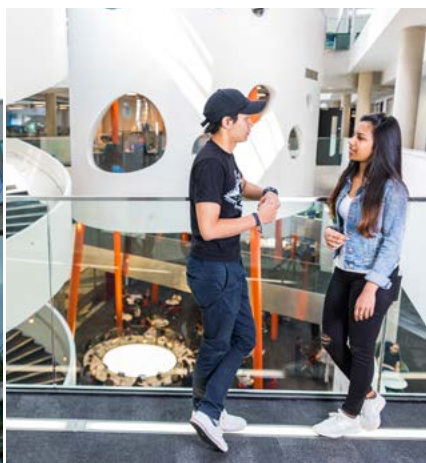
The **Progression Support team** can also help if you do not achieve the required progression level for the University of Sheffield at the end of your programme. This team works to ensure that all students who pass our programmes have an alternative choice either at the University of Sheffield, or in another UK university.

90% of students who completed their preparation programme at the International College were offered a place to study at the University of Sheffield in 2022.



Take a virtual tour of the International College, the University and Sheffield: 360imagery.co.uk/host/USIC

I'm going to be... part of a vibrant campus community



You can find the International College on the University of Sheffield campus – right in the heart of the city, where everything you need is within walking distance.

Your campus

As an International College student, you'll have access to the University of Sheffield's world class facilities, including the best Students' Union in the UK (*Whatuni Student Choice Awards 2022, 2020, 2019, 2018, 2017*). The university campus has everything you need to study, relax, and socialise:

- **Western Bank Library** – check out new media, digital works, texts, research materials and more
- **The Information Commons** – an innovative, multi-purpose learning environment, open 24 hours a day
- **The Diamond Building** – home to exceptional engineering facilities, and study areas for all students
- **The Arts Tower** – the tallest academic building in the UK, and the city's second tallest building makes for an exciting place to learn
- **iForge, the UK's first student-led makerspace** – benefit from access to facilities including laser cutters, 3D printers and woodworking tools to allow you to make whatever you want.

What else is on campus?

Alongside the bars, cafés and restaurants in the Students' Union, there's plenty of other things to see and do on campus:

- Over 350 clubs and societies – with the option for students to create their own based around their passions and interests
- Box office for tickets to concerts and performances
- Student council
- Musical and theatrical events
- A bookshop
- Support services
- State-of-the-art fitness centre, with a gym, fitness classes, and a heated indoor pool.

Student sport in the city of Sheffield

Sheffield Varsity is a showcase and celebration of student sport in the city of Sheffield, with a head-to-head battle between the sports teams of the University of Sheffield and Sheffield Hallam University, including football, athletics and finishing with the annual ice hockey final at the Sheffield Arena.



Born in Russia. / Made in Sheffield.

“The Diamond is a pretty exciting place because it has pretty much all you'd need for studying. It's a quiet place if you want it to be and if you want to direct yourself, dedicate yourself to studying, you can do just that. You can book a group room in advance and use it to study with your peers. It actually helps you to concentrate more.”

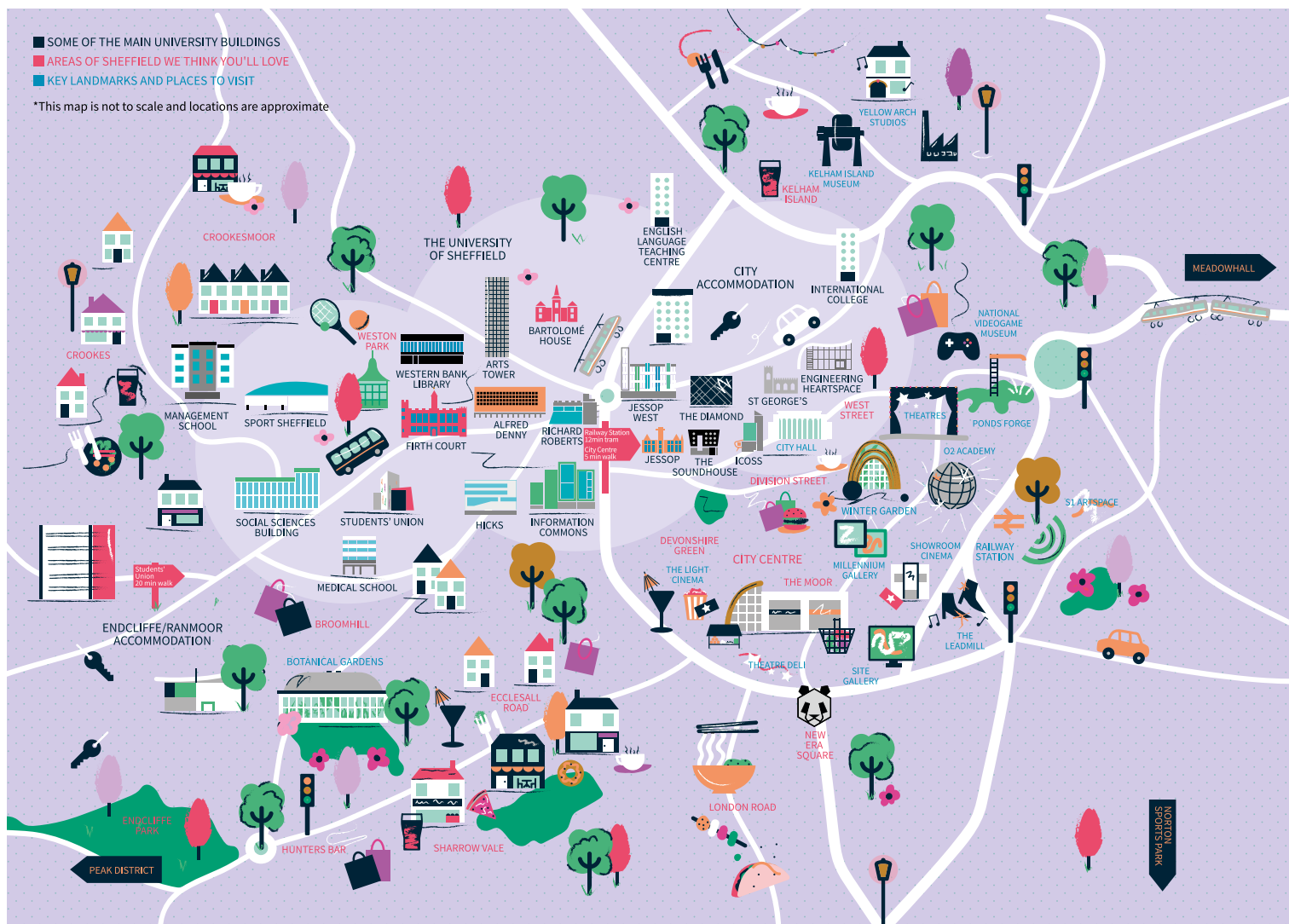
Artem

Studied International Foundation Year.

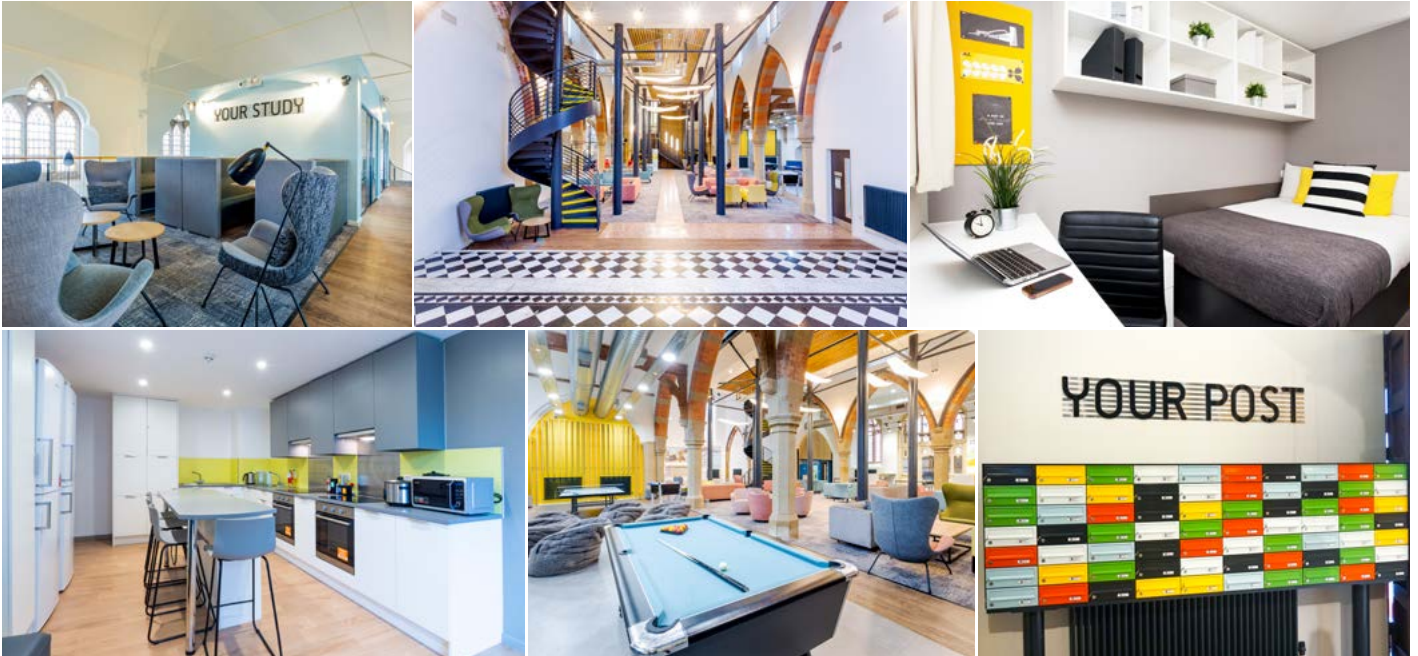
Progressed to MEng Bioengineering.



Take a virtual tour of the University of Sheffield campus: bit.ly/sheffield_campus_tour



I'm going to be... at home in Sheffield



When you're not busy studying or socialising, you'll need somewhere to call home.

Living in student accommodation is a great way to make lifelong friends. It's a key part of the student experience, and a big step in finding your independence. You can choose from University-managed accommodation, [a two-minute walk from the International College](#), or arrange your own private accommodation.

St Vincent's Place

Located near the University's main campus, and next to the International College, St Vincent's Place is our University-managed accommodation, incorporating a beautifully renovated church. With plenty of space to socialise and relax, as well as a Residence Life Mentor to help you settle into life in the UK, St Vincent's Place is the ideal spot to call home.

Facilities at St Vincent's Place

Your room at St Vincent's Place will be a part of a shared flat, and includes the following benefits:

- Fully furnished
- Private en-suite bathroom
- Desk and study space
- Welcome pack, including bedding
- Bills included.

See our accommodation facilities at St Vincent's through a 360° virtual tour: usic.sheffield.ac.uk/about/accommodation

St Vincent's Place also has a number of shared facilities and services, all designed for your comfort and safety:

- Shared kitchen
- Study areas
- 24/7 on-site security
- Social spaces, including a games room and cinema room
- Bike storage
- High speed Wi-Fi
- Laundry facilities
- Music room.

Information for under 18s

We strongly recommend that all under 18s live in University-managed accommodation. If you are younger than 18 years old when you start your programme, you are guaranteed a room in University-managed accommodation. You'll be placed with students of a similar age group and benefit from specific services available to support younger residents, as well as quick and easy access to the College team.

Alternative accommodation

We highly recommend the University-managed accommodation to all of our students. However, students studying at the International College do also have the option to arrange their own private accommodation. If you choose to do this, it is important that you let us know where you are staying and this must be less than 60 minutes away from the College. We also advise that you arrange your accommodation as soon as you confirm your place; we can assist you during this process, just ask your agent or advisor.

Note: Accommodation options vary depending on the time of year you start your course. For the latest information, please visit our website.





Born in Hong Kong. / Made in Sheffield.

“I dreamed to become a pilot and fly a plane since I was young. So getting a pilot license really makes my dreams come true.

My favourite memory from the University of Sheffield is my pilot training during my final year. I still remember when I first flew a plane, the feelings was really amazing. It's really different to being a passenger in the plane, because I could actually touch the controls and get the planes flying.”

Harald

Studied International Foundation Year.

Graduated in 2022 with BEng (Hons)

Aerospace Engineering.

Now working as an Assistant Satellite Operation Engineer.



Find out more about Harald's story:
bit.ly/Harald_story

Undergraduate pathway

International Foundation Year

The International Foundation Year is an intensive programme, designed specifically to provide you with a route to undergraduate degree study at the University of Sheffield.

This course includes academic subjects, study skills and English language preparation. It has been developed for international students and will provide you with the skills and knowledge to succeed in your undergraduate degree. Once you successfully complete your International Foundation Year and achieve the required progression grades, you can enter the first year of your chosen undergraduate degree at the University.

Study structure

You can choose one of two routes.

Business, Social Sciences and Humanities

This will prepare you for an undergraduate degree in business, arts, humanities or social sciences, including those taught at the Management School and the School of Law, and many degrees in other departments.

Science and Engineering

This will prepare you for an undergraduate degree in the Faculty of Engineering or the Faculty of Science and a small number of degrees in other faculties. For each of our programmes, there are subject-specific pathways based on your progression degree.

Progression degrees

The International Foundation Year leads to a wide range of undergraduate degrees, subject to meeting progression requirements. These are subject to availability and may change at the University's discretion.

Please refer to the progression degrees listed on page 16 and 17 (note that some progression degrees are not available from the 1.5 semester programme). For the latest list and up-to-date entry requirements, please visit our website.

International Foundation Year: key facts

Course length

1.5 or 2 semesters

Entry dates

1.5 semesters: March

2 semesters: September or January

Age

Students should be at least 17 years of age on entry to the International College. Please note that students must be aged 18 or over upon progression to the University.

Entry requirements

Academic: Good high school graduation grades or equivalent.

For more information on country-specific requirements, please see the website.

English language: See the study plan below

English Language Preparation

If you need further language training before you start the International Foundation Year, you can join our intensive English Language Preparation programme. This course is taught in partnership with the University's English Language Teaching Centre and is designed to improve your English language skills to the necessary level. At the end of your English language preparation programme, you will start the International Foundation Year, providing you have achieved the required language level.

English Language Preparation: key facts

Course length and entry dates

One term: June or September

Two terms: March or June



For more information: usic.sheffield.ac.uk/programmes/international-foundation-year

Study plan options

Academic IELTS for UKVI	Course length	Start	March-June	June-August	September-December	January-March	March-June	July-August	September
4.0 (4.0 in all skills)	2 terms ELP + 2 semesters	March or June	ELP		IFY			Holiday/re-sits*	Start your undergraduate degree programme at the University of Sheffield
				ELP		IFY			
4.5 (4.5 in all skills)	1 term ELP + 2 semesters	June or September		ELP	IFY			Holiday/re-sits*	
					ELP	IFY			
5.0 (5.0 in writing, 4.0 all other skills)	2 semesters	September or January			IFY			Holiday/re-sits*	
						IFY			
6.0 (5.0 in all skills)	1.5 semesters	March					IFY		

ELP – English Language Preparation **IFY** – International Foundation Year

*Re-sits for the June cohort take place in early July. Re-sits for the August finishers take place in early September.

Note: Students wishing to progress to some degree programmes at the University will require an English level of IELTS 0.5 or equivalent higher than the standard level of entry to their International Foundation Year. Please see the website for more information.

International Foundation Year Business, Social Sciences and Humanities

This programme provides a route to a number of degrees in business, the humanities, and social sciences, which include degrees taught at the Management School, the School of Law and School of Architecture.

Your International Foundation Year will include a combination of academic subjects, study skills and English language preparation. The programme will be tailored to allow you to prepare for your chosen degree, studying the most relevant modules for your subject area.

Core modules

- Academic English Skills
- Academic Success
- Project Skills

Pathway modules (related to your degree choice)

There is a choice of five pathways, each with modules specific to that pathway.

Architecture, Landscape and the Urban Environment (A)

- Social Science
- The Built Environment

Business, Management and Finance (BM&F)

- Accounting and Financial Management
- Management

Economics (E)

- Mathematics
- Principles of Economics

Law and Criminology (L&C)

- Principles of Law
- Social Science

Social Science and Humanities (SS&H)

- Humanities
- Social Science

University-style teaching

The University of Sheffield International College introduces you to the style of teaching that you will experience on your degree. Taking part in tutorials, seminar-style classes and larger group lectures means that you will be well prepared for an undergraduate degree at the University.

Assessment

You will be assessed regularly throughout the course. Your development is monitored through coursework during the semesters and assessments at the end of each semester. Some of these assessments might take the form of examinations. You may also need to complete a series of presentations and extended essays as part of your overall assessment.



**1st in the world for
Library & Information
Management**

(QS World Subject Rankings 2022)



7th in the UK for Music

(The Times and The Sunday Times Good University Guide 2023)



**Top 50 universities in the
world for Geography**

(QS World Subject Rankings 2022)



**Top 100 in the world for
Philosophy**

(QS World Subject Rankings 2022)



**Sheffield University
Management School is
triple accredited: AACSB,
AMBA & EQUIS**

International Foundation Year Science and Engineering

A pathway to an exciting scientific degree in the Faculty of Engineering or Faculty of Science, as well as a small number of degrees in other faculties.

Your programme will be tailored to prepare you for your chosen degree, studying the most relevant modules to your subject area. Some of the modules listed will be compulsory for progression on to specific degree programmes at the University.

Core modules

- Academic English Skills
- Academic Success
- Project Skills

Pathway modules (related to your degree choice)

There is a choice of three pathways, with modules tailored to your aims:

Biological, Medical and Life Sciences (B&LS)

- Biology
- Chemistry

Chemistry and Engineering (C&E)

- Chemistry
- Mathematics

Physics and Engineering (P&E)

- Mathematics
- Physics

University-style teaching

The University of Sheffield International College introduces you to the style of teaching that you will experience on your degree. Taking part in tutorials, seminars, lectures and laboratory work means that you'll be well prepared for an undergraduate degree at the University. Occasionally, our teaching takes place in the University's Diamond Building, so you might get the chance to use the specialist laboratories and facilities.

Assessment

You will be assessed regularly throughout the course. Your development is monitored through coursework during the semesters and assessments at the end of each semester. Some of these assessments might take the form of examinations. You may also need to complete a series of presentations and extended essays as part of your overall assessment.



See the Diamond, one of the University's engineering facilities, through a 360° virtual tour: usic.sheffield.ac.uk/diamond-VR



Siemens has collaborated with the University's Careers Service, allowing students access to Siemens Connected Curriculum and the brand new Digital Innovation Zone.



3rd in the UK for General Engineering

(The Times and The Sunday Times Good University Guide 2023)



In the past three years, over 750 engineering students have completed an Industrial Placement Year.



Top 15 in the UK for Optometry, Ophthalmics & Orthoptics

(The Complete University Guide 2023)



17th in the UK for Biological Sciences

(The Complete University Guide 2023)



Top 150 in the world for Psychology

(QS World Subject Rankings 2022)



Undergraduate progression degrees

Choose from over **160 undergraduate degrees** available from the International Foundation Year, subject to meeting progression requirements. Please note some progression degrees are not available from the 1.5 semester programme. Places are limited on some courses, so you are advised to apply and confirm your place as soon as possible. These degrees are subject to availability and may change at the University's discretion. **Please refer to the website for full and up-to-date details.**

International Foundation Year Business, Social Sciences and Humanities

Degree Programmes	Pathway
Accounting and Financial Management BA (Hons)	BM&F
Accounting and Financial Management and Economics BA (Hons)	BM&F
Applied Social Sciences BA (Hons)	SS&H
Architecture BA (Hons) *†^	A
Architecture and Landscape BA (Hons) *†^	A
Business Management BA (Hons)	BM&F
Business Management and Economics BA (Hons)	BM&F
Business Management and Japanese Studies BA (Hons)	BM&F
Chinese Studies BA (Hons) ☐	SS&H
Chinese Studies and Business Management BA (Hons) ☐	SS&H
Chinese Studies and History BA (Hons) ☐	SS&H
Chinese Studies with Japanese BA (Hons) ☐	SS&H
Criminology BA (Hons)	L&C
Digital Media and Society BA (Hons)	SS&H
East Asian Studies BA (Hons) ☐	SS&H
Economics BA (Hons)	E
Economics BSc (Hons)	E
Economics and Mathematics BSc (Hons)	E
Economics and Politics BA (Hons)	E
Economics with Finance BSc (Hons)	E
Education, Culture and Childhood BA (Hons)	SS&H
English Language and Linguistics BA (Hons)	SS&H
English Language and Literature BA (Hons)	SS&H
English Literature BA (Hons)	SS&H
Geography BA (Hons)	A
Geography and Planning BA (Hons)	A
Global Sustainable Development BA (Hons)	A
History BA (Hons)	SS&H
International Business Management with Study Abroad BA (Hons) ^	BM&F
International Relations and Politics BA (Hons)	SS&H
Japanese Studies BA (Hons) ☐	SS&H
Japanese Studies and History BA (Hons) ☐	SS&H
Journalism Studies BA (Hons) **†Δ	SS&H
Korean Studies BA (Hons) ☐	SS&H
Korean Studies with Japanese BA (Hons) ☐	SS&H
Landscape Architecture BA (Hons) ‡	A
Landscape Architecture BSc (Hons) ‡	A
Law LLB (Hons)	L&C
Law (European and International) LLB (Hons)	L&C
Law and Criminology LLB (Hons)	L&C
Law with Chinese Law LLB (Hons)	L&C
Mathematics BSc (Hons)	E
Mathematics MMath (Hons)	E
Mathematics and Philosophy BSc (Hons)	E
Mathematics and Statistics MMath (Hons)	E
Modern Languages and Cultures BA (Hons)	SS&H
Music BMus (Hons) !	SS&H
Music and Korean Studies BA (Hons) !☐	SS&H

Degree Programmes	Pathway
Music and Philosophy BA (Hons) !	SS&H
Philosophy BA (Hons)	SS&H
Philosophy, Religion and Ethics BA (Hons)	SS&H
Politics BA (Hons)	SS&H
Politics and Philosophy BA (Hons)	SS&H
Politics and Sociology BA (Hons)	SS&H
Psychology BSc (Hons) **	SS&H
Psychology with Placement Year BSc (Hons)	SS&H
Sociology BA (Hons)	SS&H
Sociology with Social Policy BA (Hons)	SS&H
Urban Studies BA (Hons)	A
Urban Studies and Planning MPlan (Hons)	A

Pathway key:

(A) Architecture, Landscape and the Urban Environment
(BM&F) Business, Management and Finance

(E) Economics

(L&C) Law and Criminology

(SS&H) Social Science and Humanities

* Design portfolio required at application to the International College.

☐ Language degrees not suitable for native speakers.

^ Students must be 18 or over when starting their degree.

** Students wishing to progress to these degree programmes at the University will require an English level of IELTS 0.5 or equivalent higher than the standard level of entry to their International Foundation Year.

† Pass in an interview required as well as meeting progression requirements.

‡ Portfolio will be completed in International College but does not count towards progression.

! Grade 8 Practical (ABRSM/Trinity/Rockschool) at Merit + Grade 5 theory (ABRSM/Trinity) at Merit or equivalent.

Δ Blog chat required.

International Foundation Year Science and Engineering

Degree Programmes	Pathway
Aerospace Engineering BEng (Hons)	P&E
Aerospace Engineering MEng (Hons)	P&E
Aerospace Engineering with Private Pilot Instruction BEng (Hons)	P&E
Aerospace Engineering with Private Pilot Instruction MEng (Hons)	P&E
Architectural Engineering MEng (Hons)	P&E
Biochemistry BSc (Hons) **!	B&LS
Biochemistry and Genetics BSc (Hons) **!	B&LS
Biochemistry and Genetics with an Industrial Placement Year BSc (Hons) **!	B&LS
Biochemistry with an Industrial Placement Year BSc (Hons) **!	B&LS
Bio-dental Science and Technology BSc (Hons) ^**!	B&LS
Bioengineering BEng (Hons)	C&E
Bioengineering MEng (Hons)	C&E
Bioengineering with an Industrial Placement Year BEng (Hons)	C&E
Bioengineering with an Industrial Placement Year MEng (Hons)	C&E
Biology BSc (Hons) **!	B&LS
Biology MBiolSci (Hons) **!	B&LS
Biomedical Science BSc (Hons) ^**!	B&LS
Biomedical Science MBiolSci (Hons) **!	B&LS
Biomedical Science with an Industrial Placement Year BSc (Hons) **!	B&LS
Biomedical Science with an Industrial Placement Year MBiomedSci (Hons) **!	B&LS
Chemical Engineering BEng (Hons)	C&E
Chemical Engineering MEng (Hons)	C&E
Chemical Engineering with an Industrial Placement Year MEng (Hons)	C&E
Chemical Engineering with an Industrial Placement Year BEng (Hons)	C&E
Chemistry BSc (Hons) **	C&E
Chemistry MChem (Hons) **	C&E
Chemistry with an Industrial Placement Year BSc (Hons) **	C&E
Chemistry with an Industrial Placement Year MChem (Hons) **	C&E
Chemistry with Biological and Medicinal Chemistry BSc (Hons) **	C&E
Chemistry with Biological and Medicinal Chemistry MChem (Hons) **	C&E
Chemistry with Study Abroad MChem (Hons) **	C&E
Civil and Structural Engineering MEng (Hons)	P&E
Civil and Structural Engineering with an Industrial Placement Year MEng	P&E
Civil Engineering BEng (Hons)	P&E
Civil Engineering MEng (Hons)	P&E
Civil Engineering with an Industrial Placement Year MEng	P&E
Civil Engineering with an Industrial Placement Year BEng	P&E
Computer Systems Engineering BEng (Hons)	P&E
Computer Systems Engineering MEng (Hons)	P&E
Computer Systems Engineering with an Industrial Placement Year BEng (Hons)	P&E
Ecology and Conservation Biology BSc (Hons) **!	B&LS
Ecology and Conservation Biology MBiolSci (Hons) **!	B&LS
Electrical and Electronic Engineering BEng (Hons)	P&E
Electrical and Electronic Engineering MEng (Hons)	P&E
Electrical Engineering BEng (Hons)	P&E
Electronic Engineering BEng (Hons)	P&E
Electronics and Computer Engineering BEng (Hons)	P&E
Electronics and Computer Engineering MEng (Hons)	P&E
Environmental Science BSc (Hons) **!	B&LS
Environmental Science MEnvSci **!	B&LS
Financial Mathematics BSc (Hons)	P&E
General Engineering BEng (Hons)	P&E
General Engineering MEng (Hons)	P&E

Degree Programmes	Pathway
General Engineering with an Industrial Placement Year BEng (Hons)	P&E
General Engineering with an Industrial Placement Year MEng (Hons)	P&E
Genetics BSc (Hons) **!	B&LS
Genetics with an Industrial Placement Year BSc (Hons) **!	B&LS
Geography BSc (Hons) **!	B&LS
Materials Science and Engineering BEng (Hons)	C&E
Materials Science and Engineering MEng (Hons)	C&E
Mathematics BSc (Hons)	P&E
Mathematics MMath (Hons)	P&E
Mathematics and Philosophy BSc (Hons)	P&E
Mathematics and Statistics BSc (Hons)	P&E
Mathematics and Statistics MMath (Hons)	P&E
Mechanical Engineering BEng (Hons)	P&E
Mechanical Engineering MEng (Hons)	P&E
Mechatronic and Robotic Engineering BEng (Hons)	P&E
Mechatronic and Robotic Engineering MEng (Hons)	P&E
Mechatronic and Robotic Engineering with an Industrial Placement Year BEng (Hons)	P&E
Mechatronic and Robotic Engineering with an Industrial Placement Year MEng (Hons)	P&E
Medical Genetics BSc (Hons) **!	B&LS
Medical Genetics with an Industrial Placement Year BSc (Hons) **!	B&LS
Medical Microbiology BSc (Hons) **!	B&LS
Medical Microbiology with an Industrial Placement Year BSc (Hons) **!	B&LS
Microbiology BSc (Hons) **!	B&LS
Microbiology with an Industrial Placement Year BSc (Hons) **!	B&LS
Molecular Biology BSc (Hons) **!	B&LS
Molecular Biology with an Industrial Placement Year BSc (Hons) **!	B&LS
Orthoptics BMedSci (Hons) ^!†	All
Physics BSc (Hons)	P&E
Physics MPhys (Hons)	P&E
Physics and Astrophysics BSc (Hons)	P&E
Physics and Astrophysics MPhys (Hons)	P&E
Physics with Medical Physics BSc (Hons)	P&E
Physics with Medical Physics MPhys (Hons)	P&E
Physics with Study Abroad MPhys (Hons)	P&E
Plant Sciences BSc (Hons) **!	B&LS
Plant Sciences MBiolSci (Hons) **!	B&LS
Psychology BSc (Hons) **!	B&LS
Psychology with Placement Year BSc (Hons)	B&LS
Structural Engineering and Architecture MEng (Hons) *	P&E
Theoretical Physics BSc (Hons)	P&E
Theoretical Physics MPhys (Hons)	P&E
Theoretical Physics with Study Abroad MPhys (Hons)	P&E
Zoology BSc (Hons) **!	B&LS
Zoology MBiolSci (Hons) **!	B&LS

Pathway key:

(B&LS) Biological, Medical and Life Sciences

(C&E) Chemistry and Engineering

(P&E) Physics and Engineering

* Design portfolio required at application to the International College.

** Students wishing to progress to these degree programmes at the University will require an English level of IELTS 0.5 or equivalent higher than the standard level of entry to their International Foundation Year.

^ Students must be 18 or over when starting their degree.

! Not available for March starters.

† Students must attend at least two events organised by the Academic Unit of Ophthalmology and Orthoptics.

Postgraduate pathway

Pre-Masters

The Pre-Masters programme at the University of Sheffield International College offers a path to postgraduate study for international students.

This course is an intensive 1.5 or 2-semester programme of academic subjects, study skills and English language preparation. It has been designed specifically to prepare you for masters study at the University of Sheffield. This programme is for you if you do not meet the direct entry requirements for a masters degree, want to refresh your skills, or want to be better prepared for the style of study required during a UK masters degree. Once you successfully complete your Pre-Masters programme and achieve the required progression grades, you can proceed to your postgraduate degree at the University.

Study structure

You can choose one of two routes.

Business, Social Sciences and Humanities

This will prepare you for a taught postgraduate degree in the Faculty of Social Sciences, including the School of Law, the Management School and the School of Architecture. It can also lead to degrees in the Faculty of Arts and Humanities and other areas too.

Science and Engineering

This will prepare you for a taught postgraduate degree in the Faculty of Engineering or Faculty of Science, and a small number of programmes in other faculties, such as Medicine, Dentistry and Health. For each of our programmes, there are subject-specific pathways based on your progression degree.

Progression degrees

The Pre-Masters leads to a wide range of postgraduate degrees, subject to meeting progression requirements. These are subject to availability and may change at the University's discretion. Please refer to the progression degrees listed on page 22 and 23. For the latest list and up-to-date entry requirements, please visit our website.

Study plan options

Academic IELTS for UKVI ^A	Course length	Start	March-June	June-August	September-December	January-March	March-June	July-August	September
4.5 (4.5 in all skills)	2 terms ELP + 2 semesters	March or June	EPM		PMP			Holiday/re-sits*	Start your postgraduate degree programme at the University of Sheffield
				EPM		PMP			
5.0 (5.0 in all skills)	1 term ELP + 2 semesters	June or September		EPM	PMP			Holiday/re-sits*	
					EPM	PMP			
5.5 (5.5 all skills)	2 semesters	September or January			PMP			Holiday/re-sits*	
						PMP			
6.0 (5.5 in all skills)	1.5 semesters	March					PMP		

EPM – English for Pre-Masters **PMP** – Pre-Masters programme

*Re-sits for the June finishers take place in early July. Re-sits for the August finishers take place in early September.

^AWe accept a range of English language qualifications for direct entry to the Pre-Masters as a result of Study Group's successful registration with the Office for Students (OfS), and these qualifications include IELTS Academic; Pearson; TOEFL; Cambridge Business; Cambridge Main Suite.

Note: Students wishing to progress to some degree programmes at the University will require an English level of IELTS 0.5 or equivalent higher than the standard level of entry to their Pre-Masters programme. See the website for more information.

Pre-Masters: key facts

Course length

1.5 or 2 semesters

Entry dates

1.5 semesters: March

2 semesters: September or January

Age

Students will normally be 21 years of age or older

Entry requirements

Academic: Recognised degree – in a related field for most subjects.

For more information on country-specific requirements, please see the website.

English language: See the study plan below

English for Pre-Masters

If you need additional language training before you start your Pre-Masters, depending on your degree choice, you may be able to join our intensive English for Pre-Masters programme. This is taught in partnership with the University's English Language Teaching Centre and is designed to improve your English language skills to the necessary level. At the end of your English language preparation programme, you will start the Pre-Masters programme, providing you have achieved the required language level.

English for Pre-Masters: key facts

Course length and entry dates

One term: June or September

Two terms: March or June



For more information:

usic.sheffield.ac.uk/programmes/pre-masters

Pre-Masters

Business, Social Sciences and Humanities

This course provides a route to a number of masters degrees in the Faculties of Arts and Humanities and Social Sciences, including the Management School, the School of Law and Sheffield School of Architecture.

Your programme will be tailored to prepare you for your chosen degree, studying the most relevant modules to your subject area. Some of the modules listed will be compulsory for progression on to specific degree programmes at the University. To join a Pre-Masters pathway, you may need a relevant first degree.

Core modules

- Academic English Skills
- Academic Success
- Research Project

Pathway modules (related to your degree choice)

There is a choice of five pathways, with modules tailored to your aims:

Business, Management and Finance (BM&F)

- Accounting and Finance
- Management

Economics (E)

- Advanced Economics
- Statistics and Econometrics

Information Studies (IS)

- Social Science
- Statistics and Econometrics

Law and Criminology (L&C)

- Advanced Law
- Social Science

Social Sciences & Humanities (SS&H)

- Communication, Cultures and Heritage
- Social Science

University-style teaching

The University of Sheffield International College introduces you to the style of teaching that you will experience on your degree. Taking part in tutorials, seminar-style classes and larger group lectures will prepare you for your masters at the University.

Assessment

You will be assessed regularly throughout the course. Your development is monitored through coursework during the semesters and assessments at the end of each semester. Some of these assessments might take the form of examinations. You may also need to complete a series of presentations and extended essays as part of your overall assessment.



Sheffield Management School has been awarded a **Silver Charter Award** from the Small Business Charter, recognising the University's active participation in supporting start-ups and small and medium sized businesses.



Born in Malaysia.

Made in Sheffield.

“I find the teaching style is really good. They really know what they are doing and what they are talking about and especially teaching me for research projects. They are all very good and experienced, I think the College is doing a good job in choosing people that can really teach and deliver what they need to for the courses, for all the subjects across the board.”

Nur

Studied Pre-Masters programme.

Pre-Masters Science and Engineering

This course provides a route to a number of masters degrees in the Faculty of Engineering and Faculty of Science, as well as a small number of degrees in other faculties.

Your Pre-Masters will include a combination of academic subjects, study skills and English language preparation. You will study modules relevant to your chosen subject area. Some of the modules listed will be compulsory for progression on to specific degree programmes at the University. To join a Pre-Masters pathway, you may need a relevant first degree.

Core modules

- Academic English Skills
- Academic Success
- Research Project for STEM
- Statistics

Pathway modules (related to your degree choice)

There is a choice of three pathways, with modules tailored to your aims:

Biological, Medical and Life Sciences (B&LS)

- Bioscience

Computing and Computer Science (C&CS)

- Programming

Physical Sciences and Engineering (PS&E)

- Mathematics

University-style teaching

The University of Sheffield International College introduces you to the style of teaching that you will experience on your degree. Taking part in tutorials, seminars, lectures and laboratory work means that you will be well prepared for a masters degree at the University.

Assessment

You will be assessed regularly throughout the course. Your development is monitored through coursework during the semesters and assessments at the end of each semester. Some of these assessments might take the form of examinations. You may also need to complete a series of presentations and extended essays as part of your overall assessment.



See the Diamond, one of the University's engineering facilities, through a 360° virtual tour: usic.sheffield.ac.uk/diamond-VR



98% of research and impact from the School of Biosciences is rated as world-leading or internationally excellent.

(Research Excellence Framework 2021)

Postgraduate progression degrees

Choose from over **140 postgraduate degrees** available from the Pre-Masters programme, subject to meeting progression requirements. Places are limited on some courses, so you are advised to apply and confirm your place as soon as possible. These degrees are subject to availability and may change at the University's discretion. Please refer to the website for full and up-to-date details.

Pre-Masters Business, Social Sciences and Humanities

Degree Programmes	Pathway
Acquired Communication Disorders MSc *	SS&H
American History MA *	SS&H
Applied GIS MSc *	SS&H
Applied Linguistics MA *	SS&H
Archaeology MA	SS&H
Archaeological Science MSc	SS&H
Architectural Design MA Δ*	SS&H
Broadcast Journalism MA **^*	SS&H
Business Administration MBA ø*	BM&F
Business Finance and Economics MSc *	E
Cognitive Studies MA	SS&H
Composition MA †	SS&H
Corporate and Commercial Law LLM *	L&C
Creative and Cultural Industries Management MSc	BM&F
Cultural Data Management & Communications MA	SS&H
Cultural Heritage Management MA	SS&H
Data Science MSc	IS
Digital Culture & Communications MA	SS&H
Digital Literacies, Culture and Education MA *	SS&H
Digital Media and Society MA *	SS&H
Early Modern History MA *	SS&H
East Asian Business MSc	SS&H
Economics MSc *	E
Education MA	SS&H
Education: Early Childhood MA	SS&H
Education: Language and Education MA	SS&H
English Literature MA *	SS&H
English Literature (Creative Writing) MA *	SS&H
Environmental Change and International Development MSc *	SS&H
Finance and Accounting MSc	BM&F
Financial Economics MSc *	E
Global History MA *	SS&H
Global Journalism MA *	SS&H
Heritage and Archaeology MA	SS&H
Human Osteology and Funerary Archaeology MSc	SS&H
Human Resource Management MSc	BM&F
Human Resource Management with CIPD Pathway MSc	BM&F
Information Management MSc	IS
Information Systems MSc	IS
Information Systems Management MSc	BM&F
Intercultural Communication MA *	SS&H
International Criminology MA *	L&C
International Development MA *	SS&H
International Development MPH *	SS&H
International Law and Global Justice LLM*	L&C
International Management MSc	BM&F
International Management and Marketing MSc	BM&F
International Political Economy MA	SS&H
International Public and Political Communication MA *	SS&H

Degree Programmes	Pathway
International Relations MA	SS&H
International Relations and East Asia MA	SS&H
Journalism MA ***	SS&H
Language and Linguistics MA	SS&H
Law MA	L&C
Logistics and Supply Chain Management MSc	BM&F
Management MSc	BM&F
Management (International Business) MSc	BM&F
Marketing Management Practice MSc	BM&F
Medieval History MA *	SS&H
Modern History MA *	SS&H
Money, Banking and Finance MSc *	E
Music Management MA *	SS&H
Musicology MA	SS&H
Music Performance Studies MA !*	SS&H
Music Performance Studies (Piano) MA !*	SS&H
Osteoarchaeology MSc	SS&H
Palaeoanthropology MSc	SS&H
Philosophy MA	SS&H
Political Theory MA	SS&H
Politics and Media in East Asia MA	SS&H
Politics, Governance and Public Policy MA	SS&H
Psychology and Education MA	SS&H
Psychology of Music MA *	SS&H
Real Estate MSc *	SS&H
Real Estate Planning and Development MSc *	SS&H
Speech Difficulties MSc *	SS&H
Sustainable Architecture Studies MSc Δ*	SS&H
TESOL MA	SS&H
Translation Studies MA	SS&H
Urban Design MA Δ*	SS&H
Urban Design and Planning MA *	SS&H
Urban and Regional Planning MSc *	SS&H

Pathway key:

(BM&F) Business, Management and Finance

(E) Economics

(IS) Information Studies

(L&C) Law and Criminology

(SS&H) Social Sciences & Humanities

* Specific academic background is required for application/confirmation.

** Students wishing to progress to these degree programmes at the University will require an English level of IELTS 0.5 or equivalent higher than the standard level of entry to their Pre-Masters programme.

Δ Design portfolio on entry to the International College assessed by Study Group (sample portfolios of adequate standard will be provided by the department to the College selection team).

^ Blog chat interview required.

! Portfolio submission - progression must be via a video audition on principal instrument. This is required before progression at the end of the Pre-Masters programme.

ø At least 5 years relevant full-time work experience after graduation with some managerial experience and interview is required.

† Applicants must have two examples of previous composition work (either instrumental or electroacoustic/electronic).

Pre-Masters Science and Engineering

Degree Programmes	Pathway
Advanced Computer Science MSc *	C&CS
Advanced Control and Systems Engineering MSc *	C&CS
Advanced Mechanical Engineering MSc *	PS&E
Advanced Metallurgy MMet *	PS&E
Aerospace Engineering MSc *	PS&E
Aerospace Materials MSc (Eng) *	PS&E
Archaeology MA	PS&E
Archaeological Science MSc	PS&E
Astrophysics MSc	PS&E
Autonomous and Intelligent Systems MSc *	PS&E
Biochemical Engineering with Industrial Management MSc *	PS&E
Biodiversity and Conservation MSc *	B&LS
Bioengineering MSc *	PS&E
Biological and Bioprocess Engineering MSc (Eng) *	PS&E
Biomedical Science MSc *	B&LS
Cancer Biology and Therapeutics MSc *	B&LS
Chemistry MSc *	PS&E
Chemistry MSc (Res) *	PS&E
Chemistry and Sustainability MSc	PS&E
Civil Engineering and Management MSc *	PS&E
Civil Engineering MSc *	PS&E
Cognitive and Computational Neuroscience MSc *	B&LS
Cognitive Neuroscience and Human Neuroimaging MSc *	B&LS
Computer Science with Speech and Language Processing MSc *	C&CS
Cybersecurity and Artificial Intelligence MSc	C&CS
Data Analytics MSc *	C&CS
Data Communications MSc (Eng) *	PS&E
Drug Discovery Science MSc *	PS&E
Electronic and Electrical Engineering MSc (Eng) *	PS&E
Energy Engineering with Industrial Management MSc *	PS&E
Environmental and Energy Engineering MSc (Eng) *	PS&E
Heritage and Archaeology MA	PS&E
Human Anatomy with Education MSc *	B&LS
Human and Molecular Genetics MSc *	B&LS
Human Osteology and Funerary Archaeology MSc	PS&E
Masters in Dental Public Health MDPH	PS&E
Materials Science and Engineering MSc *	PS&E
Mechanical Engineering and Industrial Management MSc *	PS&E
Molecular Biology and Biotechnology MSc *	B&LS
Nanomaterials and Materials Science MSc *	PS&E
Neuroscience MSc *	B&LS
Osteoarchaeology MSc	PS&E
Palaeoanthropology MSc	PS&E
Particle Physics MSc (Res) *	PS&E
Pharmaceutical Engineering MSc *	PS&E
Polymers and Composites MSc (Eng) *	PS&E
Polymer Chemistry MSc *	PS&E
Process Safety and Loss Prevention MSc (Eng) *	PS&E
Psychological Research Methods MSc *	PS&E
Psychological Research Methods with Advanced Statistics MSc *	PS&E
Psychological Research Methods with Data Science MSc *	PS&E
Quantum Photonics and Nanomaterials MSc (Res) *	PS&E
Robotics MSc *	C&CS
Semiconductor Photonics and Electronics MSc (Eng) *	PS&E
Solar Cell Technology MSc *	PS&E

Degree Programmes	Pathway
Statistics MSc *	PS&E
Statistics with Medical Applications MSc *	PS&E
Structural Engineering MSc *	PS&E
Systems Neuroscience MSc *	PS&E
Translational Neuroscience MSc *	B&LS
Water Engineering MSc *	PS&E
Wireless Communications (Systems) MSc (Eng) *	PS&E

Pathway key:

(B&LS) Biological, Medical and Life Sciences

(C&CS) Computing and Computer Science

(PS&E) Physical Sciences and Engineering

* Specific academic background may be required for application/confirmation.

Born in Nigeria.

Made in Sheffield.

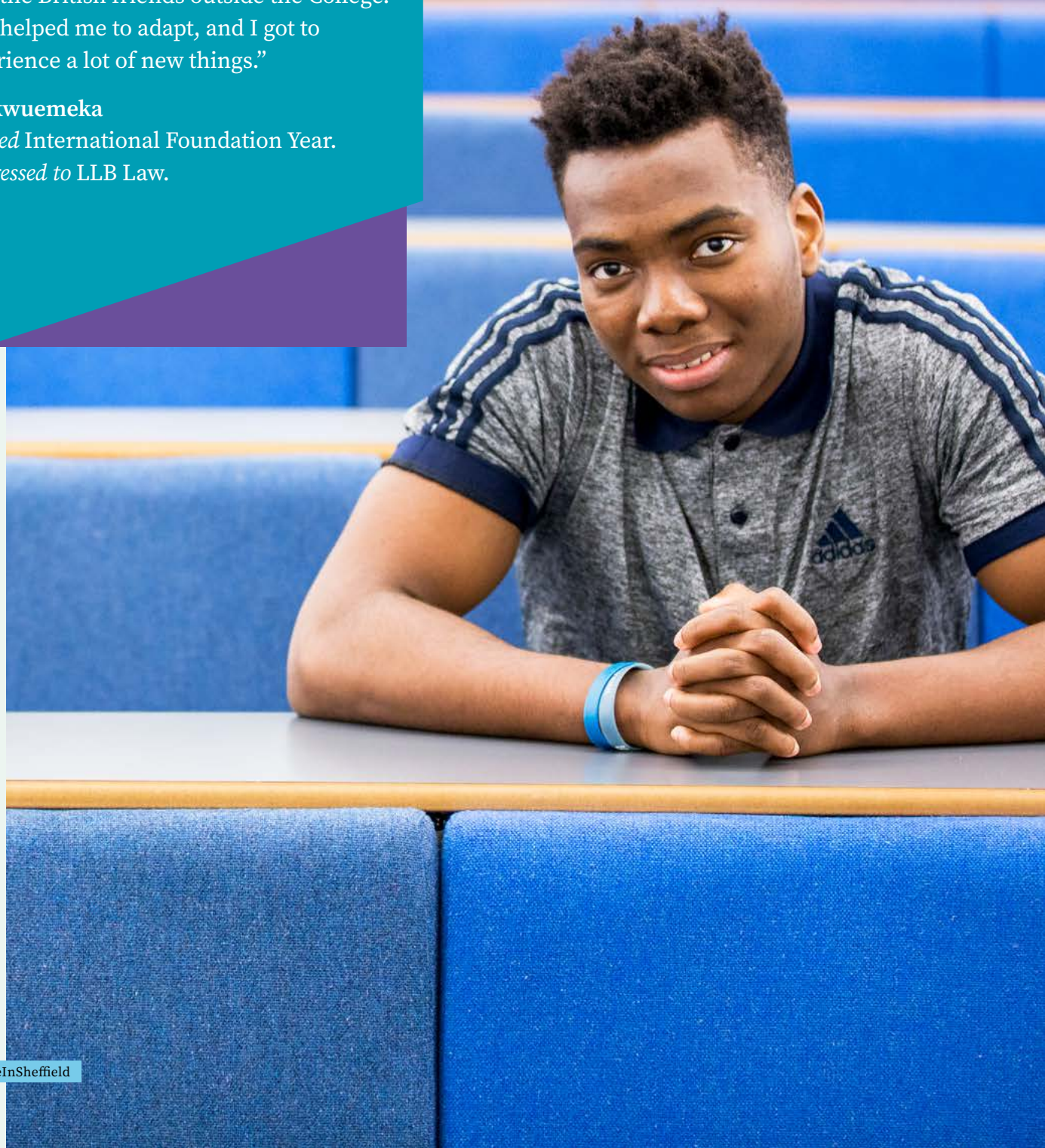
“I look at myself before and I have really changed because I tell people now all the time, I have become more enlightened because I have become exposed to new things and new cultures.

When I first got here it was more like a culture shock. But then making new friends and meeting new people in foundation and lots of international students, and then the British friends outside the College. That helped me to adapt, and I got to experience a lot of new things.”

Chukwuemeka

Studied International Foundation Year.

Progressed to LLB Law.



Student insurance

We strongly recommend that international students have the protection of personal insurance whilst in the UK. You may wish to purchase our “StudyCare Insurance Plus” cover or arrange your own.

StudyCare Insurance Plus is specifically designed for international students’ needs during your studies at the International College and, if required, after progressing to your university.

Our insurance cover is available for up to 12 months or 24 months (fixed), allowing you to choose the policy length that suits you. Both lengths cover travel to the UK, loss of personal possessions as well as providing health and medical insurance. You can purchase StudyCare Insurance Plus as part of the application process. Visit our website for more information studygroup.com/studycare.

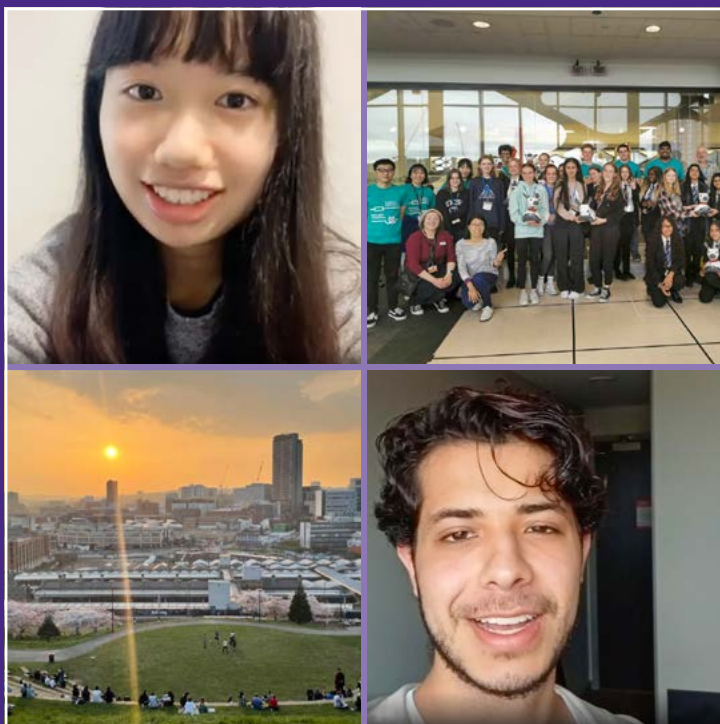
How to apply

If you would like to apply to study at the University of Sheffield International College, you will need to complete an application form and submit the relevant documentation.

You can apply through your local education agent. Alternatively you can apply directly via our website and one of our dedicated Student Enrolment Advisors will be happy to provide support through every step of the application process.



Full information on how to apply, fees, entry requirements and more, visit usic.sheffield.ac.uk/how-to-apply



Ask us what life in Sheffield is like

Do you want to ask a student about their experience studying in Sheffield?



Chat to one of our ambassadors in English today: bit.ly/Ask_a_friend

Join us on social media

 /UniversityofSheffieldInternational

 @sheffield_ic

 /TheUniversityofSheffieldInternationalCollege

#MadeInSheffield



Disclaimer

This guide is intended as a general guide for students considering entry to the University of Sheffield International College from 2023. The University of Sheffield International College is operated, and its programmes offered by Study Group Limited ('Study Group'). This guide forms no part of any contract between you and Study Group except as provided below. The guide is prepared in advance of the academic year to which it relates, and Study Group makes every effort to ensure that the information contained here is accurate.

Although reasonable steps are taken by Study Group to provide the programmes and services described, Study Group cannot guarantee the provision of any programme. Any programme may be altered or withdrawn owing to circumstances beyond Study Group's reasonable control.

Such circumstances include (but are not limited to) industrial action, lack of demand, departure of key personnel, change in government policy, withdrawal, or reduction of funding, change of law or changes necessitated by pandemic or epidemic.

Study Group will take such steps as are available to it to minimise the effect of any alteration or withdrawal of a programme and we will notify you of such alteration or withdrawal as soon as possible. Such steps may include the offer of a place on an alternative programme.

Please note that University of Sheffield International College's website is the most up-to-date source of information regarding programmes and facilities, and we strongly recommend that you always visit the website before making any commitments.

The University of Sheffield and its logo are registered Trade Marks of the University of Sheffield. 'Study Group' and the Study Group logo are registered Trade Marks of Study Group. Unless otherwise stated, all material in this publication is copyright of Study Group. No part of this publication may be reproduced, stored in a retrieval system or transmitted in any form, or by any means, electronic, mechanical, photocopying, recording or otherwise, without the permission of Study Group.

For more information, please visit [studygroup.com](https://www.studygroup.com)

