



University of Sheffield

International
College



usic.sheffield.ac.uk

**MADE FROM
EVERY
EXPERIENCE**

A MESSAGE FROM THE COLLEGE DIRECTOR

“When you join the University of Sheffield International College, you will become a part of the University of Sheffield and our vibrant international community from day one.

Our staff are dedicated to supporting you, providing the best possible introduction to studying in Sheffield. Whatever your ambition, we look forward to welcoming you and helping you on your journey to become who you are going to be.”



Kirsten Bartlett
College Director

Contents

02 - 11	About Sheffield and the International College
12 - 17	International Foundation Year
18 - 21	International Year One
22 - 27	Pre-Masters
29	How to apply



GET INVOLVED WITH
THE AWARD-WINNING
STUDENTS' UNION



THRIVE IN OUR
UNIQUE COLLEGE
ENVIRONMENT

A BIG SHEFFIELD WELCOME

SUPPORT TO DEVELOP
YOUR SKILLS



EXPLORE
SHEFFIELD'S
NATURAL
SCENERY



A student with long brown hair, wearing a white lab coat, is seen from the side, looking through a large, professional microscope. The microscope is white and black, mounted on a dark wooden lab bench. To the left of the student is a biosafety cabinet with a blue frame and a glass front. The background is a bright, overexposed window, suggesting a clean, modern laboratory environment. The overall lighting is soft and professional.

I'M GOING TO BE... IN AN *AMAZING* PLACE TO STUDY

Join a community known for its global reputation of exceptional teaching, impactful research, international outlook and dynamic student experiences.

TOP 20
**MOST TARGETED UK UNIVERSITIES
BY GRADUATE EMPLOYERS**

(High Fliers Research 2025)

**SIX NOBEL PRIZE
WINNERS IN THE FIELDS
OF CHEMISTRY AND
MEDICINE/PHYSIOLOGY**

NO. 1
FOR STUDENTS' UNION

(StudentCrowd University Awards 2025)

NO. 1
**IN THE RUSSELL GROUP
FOR THE THIRD YEAR
IN A ROW**

(National Student Survey 2023 - 2025, based on
aggregate responses)

**14 SUBJECTS RANKED
IN THE WORLD TOP 100**

(QS World University Rankings by Subject 2025)

**92% OF RESEARCH IS
RATED WORLD-LEADING
OR INTERNATIONALLY
EXCELLENT**

(Research Excellence Framework 2021)

**A WORLD TOP 100
UNIVERSITY, AND
15TH IN THE UK**

(QS World University Rankings 2026)

UNIVERSITY OF THE YEAR
FOR *STUDENT EXPERIENCE*

(The Times and The Sunday Times Good University Guide 2026)

I'M GOING TO BE... *LIVING* IN SHEFFIELD

A community-focused and friendly cultural hub in the north of England, Sheffield has plenty to experience.

A student city

Sheffield is England's fifth largest city (World Population Review 2025) and is made up of over 685,000 people – nearly 60,000 of which are students. This vibrant student community plays an active role in the life and feel of the city.

A top city for shopping

Meadowhall Shopping Centre is the leading shopping and leisure destination in Sheffield. With over 290 stores, choose from independent shops or big name brands.

The UK's best city for foodies

Sheffield was named as the UK's best foodie hotspot by Accor 2024. Whatever you fancy, there's guaranteed to be something to delight your tastebuds in Sheffield.

A city to discover

Famous for its creativity, the city's music, art and film communities are bustling with activity. Sheffield is large enough to offer a great range of activities, yet small enough to find your way around quickly and feel part of the community.

The UK's greenest city

If you enjoy the great outdoors, exploring Sheffield's natural scenery is a must. With 60% of Sheffield a green space, and the Peak District National Park a short bus or train ride away, there are lots of places to hike, climb or have a picnic.

**ONE OF THE UK'S TOP 10
MOST AFFORDABLE
STUDENT CITIES**

(QS Best Student Cities 2026)





Students share what they love about Sheffield: bit.ly/Why_Sheffield



Explore the UK by train from Sheffield to:

LEEDS 40 minutes
MANCHESTER 50 minutes
NOTTINGHAM 55 minutes
BIRMINGHAM 1 hour 10 minutes
LIVERPOOL 1 hour 50 minutes
LONDON 2 hours
EDINBURGH 3 hours 30 minutes

**Born in Myanmar.
Made in Sheffield.**

“I’m a big foodie, so I thought food would be a big problem. Coming here, seeing the variety of restaurants that make me really happy and especially the nature, it’s really photogenic. Everywhere I go I can whip out my phone and take a few pictures and I’m pretty sure there’ll be a nice view somewhere.”

SHIN

Studied International Foundation Year.
Progressed to BEng (Hons) Biomedical Engineering.



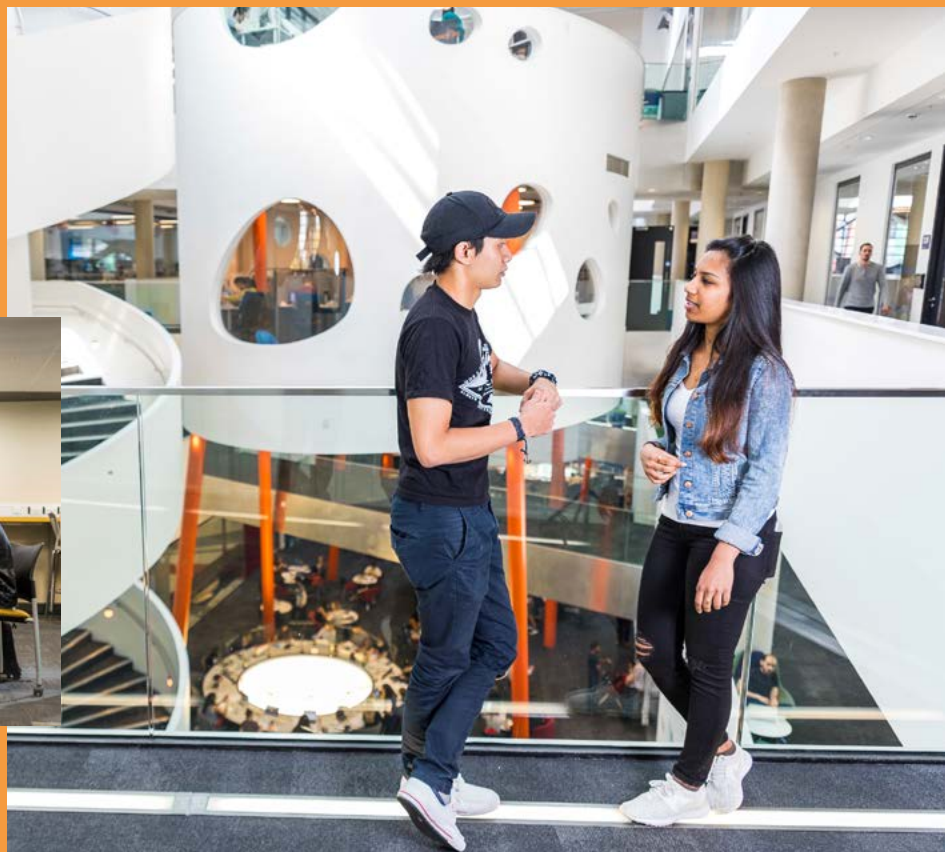


A TRANSFORMATIVE
LEARNING SPACE

WORK
COLLABORATIVELY

I'M GOING TO BE... STUDYING AT THE INTERNATIONAL COLLEGE

ADAPT TO
THE UK
EDUCATION
MODEL



An extraordinary learning environment

At the University of Sheffield International College, we provide tailored pathway programmes for international students. During your time with us, we'll help you to:

- **Reach the academic level you need** in your chosen subject
- **Gain the study skills and independent learning techniques** that will be vital to your success at both the International College and on your chosen university degree
- **Develop your English language ability** so you can express yourself clearly, take part in lessons, and get the most out of your studies
- **Adapt to the UK education model** by studying in a semester-based system, aligned closely to the University's own teaching style.

Programmes at the International College are designed in collaboration with the University of Sheffield and are delivered by Study Group. Experts in international education, Study Group staff know how to support international students as they adjust to the UK education system. Once you have completed your programme successfully, you will progress to your chosen degree and be taught by University of Sheffield staff.

A transformative learning space

College facilities include:

- **Over 40 classrooms** designed to support different classroom activities
- **Social study zones** for collaborative group work
- **A laboratory** for science and engineering students.

Small class sizes with experienced tutors

You will study in small classes with teachers experienced in helping students learn in a second language. With a combination of lectures, tutorials, workshops, seminars, interactive learning and independent study, you will experience a wide range of learning methods similar to those at the University.

Teachers will monitor your progress and support you to develop an appropriate pace of study and apply your skills. We will encourage you to build your competence in using academic English on a daily basis and work collaboratively with staff and your fellow students.

Dedicated student support

We have **nearly 150 members of staff** dedicated to supporting your success while you're studying here at the College.

Our **highly qualified academic staff** are experts in teaching students from across the world. You will have an academic tutor who will advise you on your strengths and areas for development throughout your programme.

Our **Student Experience team** can also help you from the moment you arrive. They organise induction activities and trips throughout the semester – and are also available to talk if you have any problems.

The **Progression Support team** can also help if you do not achieve the required progression level for the University of Sheffield at the end of your programme. This team works to ensure that all students who pass our programmes have an alternative choice either at the University of Sheffield, or in another UK university.

Pre-courses

Prepare for Success

Our free online preparation course will give you a head start before beginning your academic pathway programme. The course covers three essential areas of life, language and learning through a mixture of self-study content and live sessions.

Enhanced Induction

If you want to settle into your new environment and become familiar with the International College prior to starting your academic pathway programme in January, the **Enhanced Induction starts in November** and consists of three additional weeks of life, learning and language skills, at no additional tuition fee.



“As a former international student myself, I find it very rewarding to help others navigate similar difficulties that I’ve experienced.

An important aspect of my job as their teacher is to help create a sense of belonging, where they can thrive and become the best version of themselves.”

AnaMaria from Romania
Academic Tutor



Take a virtual tour of the International College:
bit.ly/InternationalCollege360

I'M GOING TO BE... PART OF A *VIBRANT* CAMPUS COMMUNITY

You can find the International College on the University of Sheffield campus – right in the heart of the city.

Your campus

As an International College student, you'll have access to the University of Sheffield's top class facilities, including the Students' Union. The University campus has everything you need to study, relax, and socialise:

- **Western Bank Library** – check out new media, digital works, texts, research materials and more
- **The Information Commons** – an innovative, multi-purpose learning environment, open 24 hours a day
- **The Diamond** – home to exceptional engineering facilities, and study areas for all students
- **The Arts Tower** – the tallest academic building in the UK, and the city's second tallest building which makes for an exciting place to learn
- **iForge, the UK's first student-led makerspace** – benefit from access to facilities including laser cutters, 3D printers and woodworking tools to allow you to make whatever you want.



THE DIAMOND



THE INFORMATION COMMONS



THE ARTS TOWER

What else is on campus?

Alongside the bars, cafés and restaurants in the Students' Union, there's plenty of other things to see and do on campus:

- **Over 350 clubs and societies** – with the option for students to create their own based around their passions and interests
- **Box office** for tickets to concerts and performances
- **Student council**
- Musical and theatrical **events**
- **Support services**
- **State-of-the-art fitness centre**, with a gym and fitness classes.

Student sport in the city of Sheffield

Sheffield Varsity is a showcase and celebration of student sport in the city of Sheffield, with a head-to-head battle between the sports teams of the University of Sheffield and Sheffield Hallam University, including football, athletics and finishing with the annual ice hockey final at the Sheffield Arena.



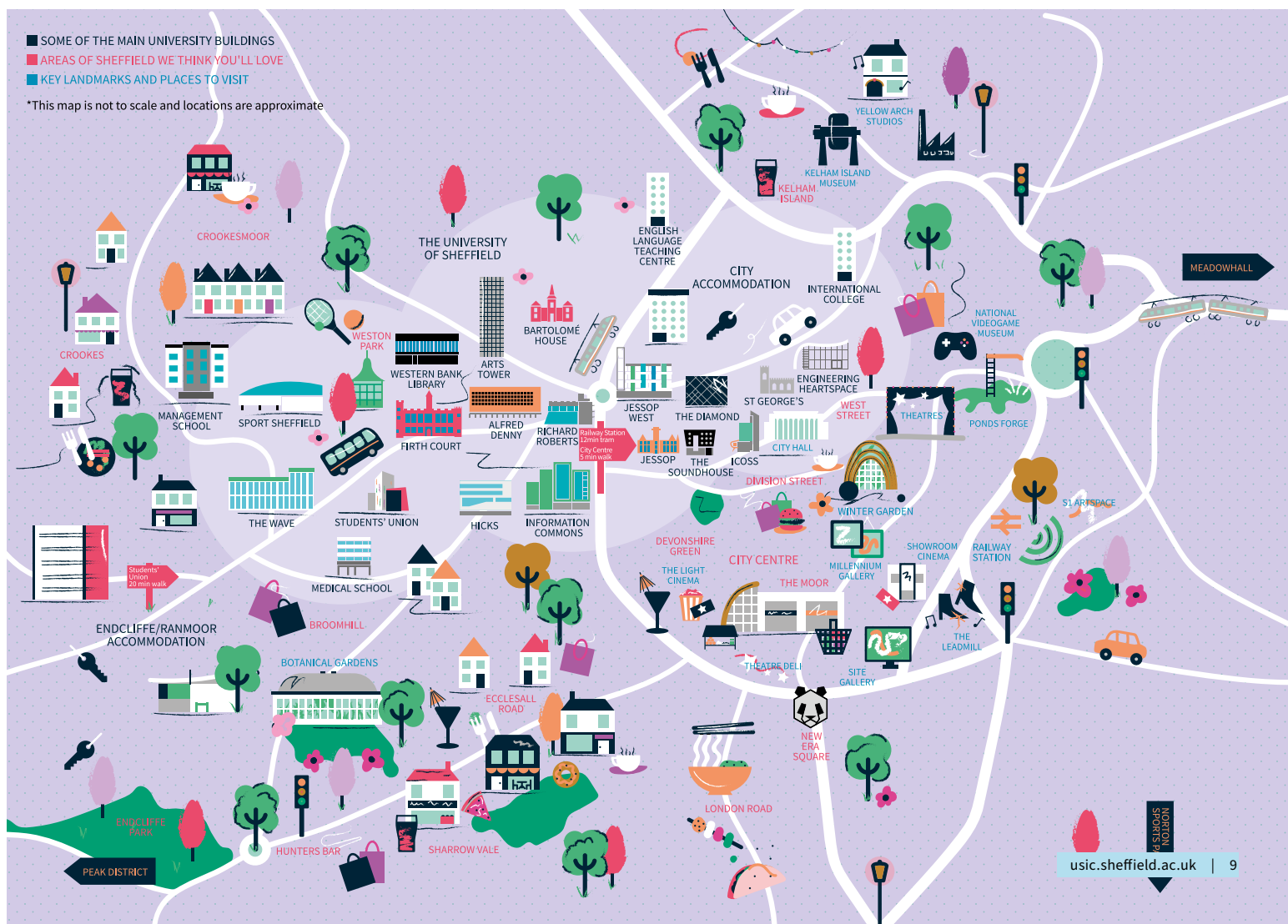
Join students as they give you
a tour around the campus:
bit.ly/sheffield_campus_tour

Born in Malaysia. Made in Sheffield.

“Being a Sheffield student, it's endless opportunities and facilities for you. Our Students' Union (SU) is really great. There's a lot of cafés and study areas around the SU and the libraries are also really nice. I like Western Bank and The Diamond, particularly. I'm in the Law society and the Malaysian and Singaporean society.”

EESHA

Studied International Foundation Year.
Progressed to LLB Law.



I'M GOING TO BE... *AT HOME* IN SHEFFIELD

When you're not busy studying or socialising, you'll need somewhere to call home.

Living in student accommodation is a great way to make lifelong friends. It's a key part of the student experience, and a big step in finding your independence. You can choose from University-managed accommodation, **under 5-minute walk from the International College**, or arrange your own private accommodation.

St Vincent's Place

Located near the University's main campus, and next to the International College, St Vincent's Place is our University-managed accommodation, incorporating a beautifully renovated church. With plenty of space to socialise and relax, as well as a Residence Life Mentor to help you settle into life in the UK, St Vincent's Place is the ideal spot to call home.

Your room at St Vincent's Place will be a single-occupancy room with a private en-suite bathroom in a shared flat. You can expect the following in your room:

- Fully furnished (including a bed, mattress, under bed storage, wardrobe, mirror, wall shelves and curtains)*
- Private en-suite bathroom (with shower, mirror, toilet, sink and towel rail)
- Study space (computer desk and chair)
- Bills included (electricity, gas, water and Wi-Fi)

* Beddings (i.e. covers, sheets and pillowcases) are not included in the accommodation. Students are expected to purchase their own items.

St Vincent's Place also has a number of shared facilities and services, all designed for your comfort and safety:

- Shared kitchen for eight students (including microwave, oven, fridge/freezer, cooking hobs, breakfast bar, stools, sofa, iron, ironing board, noticeboard, kitchen bin, vacuum cleaner, dustpan and brush, mop and bucket)^
- Communal study areas
- 24/7 on-site security
- Social spaces, including a games room and cinema room
- Bike storage
- High speed Wi-Fi
- Laundry facilities (additional charge for each use)
- Music room.

^ Utensils are not included in the kitchen. Students are expected to purchase their own items.

Information for under 18s

We strongly recommend that all under 18s live in University-managed accommodation. If you are younger than 18 years old when you start your programme, you are guaranteed a room in University-managed accommodation. You'll be placed with students of a similar age group and benefit from specific services available to support younger residents, as well as quick and easy access to the College team.

Alternative accommodation

We highly recommend University-managed accommodation to all of our students. However, students studying at the International College also have the option to arrange their own private accommodation. If you choose to do this, it is important that you let us know where you are staying and this must be less than 60 minutes door-to-door from the College. We also advise that you arrange your accommodation as soon as you confirm your place.

Note: Accommodation options vary depending on the time of year you start your course. For the latest information, please visit our website.



See our accommodation facilities at
St Vincent's through a 360° virtual tour:
bit.ly/InternationalCollege360





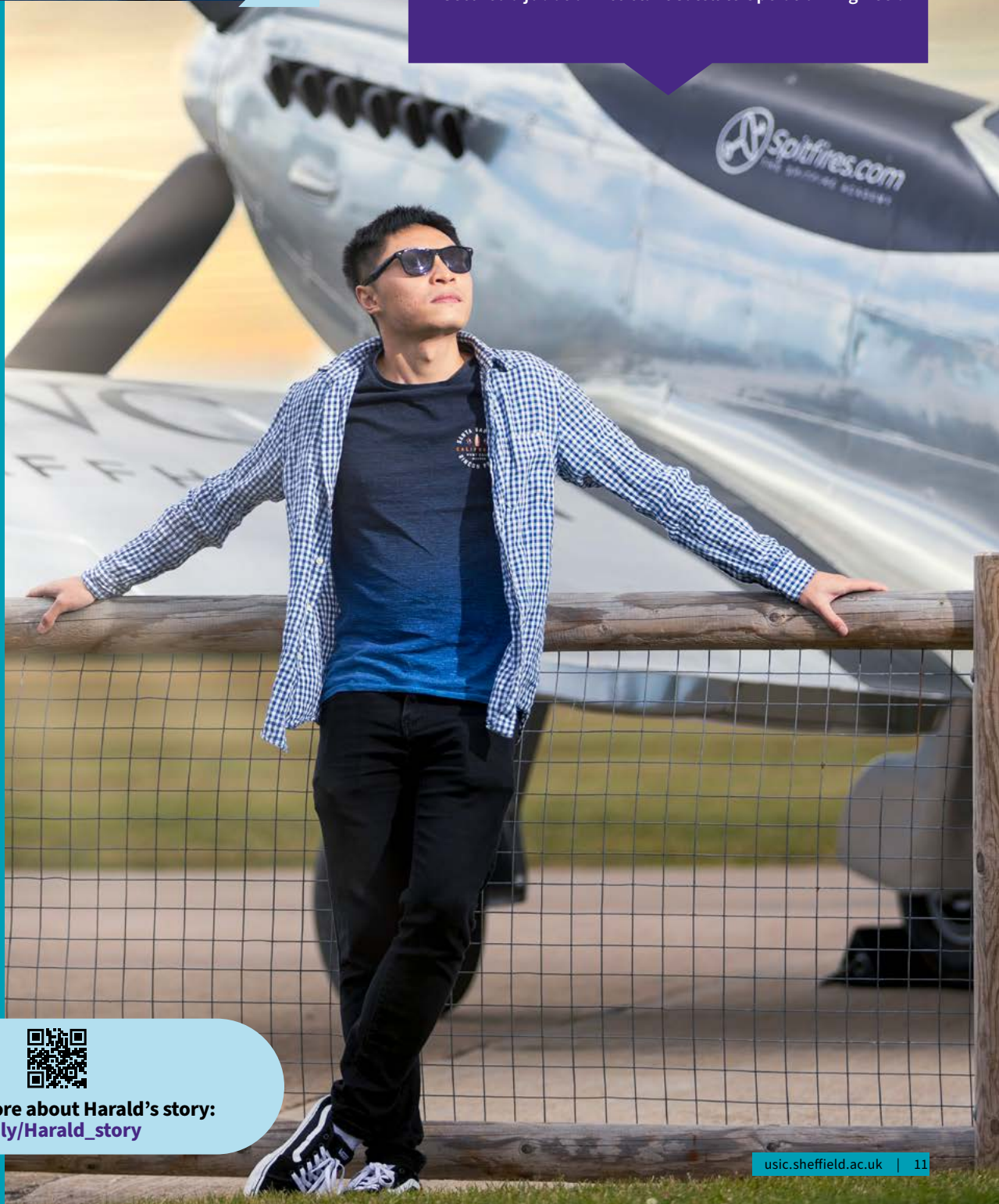
**Born in Hong Kong.
Made in Sheffield.**

“I dreamed to become a pilot and fly a plane since I was young. So getting a pilot license really makes my dreams come true.

My favourite memory from the University of Sheffield is my pilot training during my final year. I still remember when I first flew a plane, the feelings was really amazing. It's really different to being a passenger in the plane, because I could actually touch the controls and get the planes flying.”

HARALD

Studied International Foundation Year.
Graduated with BEng (Hons) Aerospace Engineering.
Secured a job as an Assistant Satellite Operation Engineer.



Find out more about Harald's story:
bit.ly/Harald_story

Undergraduate pathway

International Foundation Year

The International Foundation Year is a university preparation programme designed to improve your English language and academic skills. The pathway programme will help you transition into university learning.

Once you successfully complete your International Foundation Year and achieve the required progression grades, you can enter the first year of your chosen undergraduate degree at the University of Sheffield.

Study structure

You can choose one of two routes:

Business, Social Sciences and Humanities

This will prepare you for an undergraduate degree in business, arts, humanities or social sciences, including those taught at the Management School and the School of Law, and many degrees in other academic schools.

Science and Engineering

This will prepare you for an undergraduate degree in the Faculty of Engineering or the Faculty of Science and a small number of degrees in other faculties. There are subject-specific pathways based on your progression degree.

Progression degrees

The International Foundation Year leads to a wide range of undergraduate degrees, subject to meeting progression requirements. These degrees are subject to availability and may change at the University's discretion.

Please refer to the progression degrees listed on page 16 and 17 (note that some progression degrees are not available from the 1.5 semester programme). For the latest list and up-to-date entry requirements, please visit our website.



For more information:
usic.sheffield.ac.uk/programmes/international-foundation-year

International Foundation Year: key facts

Course length

1.5 or 2 semesters

Entry points

1.5 semesters: March^Δ

2 semesters: September, November (Enhanced Induction) or January

Age

Students should be at least 17 years of age on entry to the International College.*

Entry requirements

Academic: Good high school graduation grades or equivalent.

For more information on country-specific requirements, please see the website.

English language: See the study plan below.

* For some degrees, students must be aged 18 or over upon progression to the University. Please see page 16 and 17 for more information.

^Δ Please note that the Biological, Medical and Life Sciences subject route is not available for the March intake.

English Language Preparation

If you need further language training before you start the International Foundation Year, you can join our intensive English Language Preparation programme. This course is taught in partnership with the University's English Language Teaching Centre and is designed to improve your English language skills to the necessary level. At the end of your English Language Preparation Programme, you will start the International Foundation Year, providing you have achieved the required language level.

English Language Preparation: key facts

Our English Language Preparation programmes are delivered either on campus or online depending on the intake date and your English language level:

Course length and entry points

On campus (leading to 2 semesters International Foundation Year):

1 term: June or September

2 terms: March or June

Online (leading to 1.5 semesters International Foundation Year):

7 weeks: January

Study plan options

Academic IELTS for UKVI	Course length	Start	September-December	January-March	March-June	July-August	September
5.0 (5.0 in writing, 4.0 in other skills)	2 semesters	September or January	IFY			Holiday/re-sits*	Start first year of your undergraduate degree at the University of Sheffield
5.0 (5.0 in writing, 4.0 in other skills)	3 weeks EI + 2 semesters	November		EI			
6.0 (5.0 in all skills)	1.5 semesters	March			IFY		

EI – Enhanced Induction IFY – International Foundation Year

*Re-sits for the September starters take place end of May. Re-sits for the January and March starters take place end of August.

Note: Students wishing to progress to some degree programmes at the University will require an English level of IELTS 0.5 or equivalent higher than the standard level of entry to their International Foundation Year. Please see the website for more information.

International Foundation Year

Business, Social Sciences and Humanities

This programme provides a route to a number of degrees in business, the humanities, and social sciences, which include degrees taught at the Management School, the School of Law, and the School of Architecture and Landscape.

Your International Foundation Year will include a combination of academic subjects, study skills and English language preparation. The programme will be tailored to allow you to prepare for your chosen degree, studying the most relevant modules for your subject area.

Core modules

- Academic English Skills
- Project Skills

Pathway modules (related to your degree choice)

There is a choice of four pathways, each with modules specific to that pathway:

Architecture, Landscape and the Urban Environment (A)

- Social Science
- The Built Environment

Business, Management and Finance (BM&F)

- Accounting and Financial Management
- Management

Economics (E)

- Mathematics
- Principles of Economics

Social Science and Humanities (SS&H)

- Humanities
- Social Science

University-style teaching

The University of Sheffield International College introduces you to the style of teaching that you will experience on your degree. Taking part in tutorials, seminar-style classes and larger group lectures means that you will be well prepared for an undergraduate degree at the University.

Assessment

You will be assessed regularly throughout the course. Your development is monitored through coursework during the semesters and assessments at the end of each semester. Some of these assessments might take the form of examinations. You may also need to complete a series of presentations and extended essays as part of your overall assessment.

**1ST IN THE WORLD FOR
LIBRARY & INFORMATION
MANAGEMENT**

(QS World University Rankings by Subject 2025)

**TOP 50 IN THE WORLD
FOR ARCHITECTURE**

(QS World University Rankings by Subject 2025)

International Foundation Year

Science and Engineering

A pathway to an exciting scientific degree in the Faculty of Engineering or Faculty of Science, as well as a small number of degrees in other faculties.

Your programme will be tailored to prepare you for your chosen degree, studying the most relevant modules to your subject area. Some of the modules listed will be compulsory for progression on to specific degree programmes at the University.

Core modules

- Academic English Skills
- Project Skills

Pathway modules (related to your degree choice)

There is a choice of three pathways, with modules tailored to your aims:

Biological, Medical and Life Sciences (B&LS) ^Δ

- Biology
- Chemistry

Chemistry and Engineering (C&E)

- Chemistry
- Mathematics

Physics and Engineering (P&E)

- Mathematics
- Physics

^Δ Please note that the Biological, Medical and Life Sciences subject route is not available for the March intake.

University-style teaching

The University of Sheffield International College introduces you to the style of teaching that you will experience on your degree. Taking part in tutorials, seminars, lectures and laboratory work means that you'll be well prepared for an undergraduate degree at the University. Occasionally, our teaching takes place in the University's Diamond Building, so you might get the chance to use the specialist laboratories and facilities.

Assessment

You will be assessed regularly throughout the course. Your development is monitored through coursework during the semesters and assessments at the end of each semester. Some of these assessments might take the form of examinations. You may also need to complete a series of presentations and extended essays as part of your overall assessment.

SIEMENS HAS COLLABORATED WITH THE UNIVERSITY'S CAREERS SERVICE, ALLOWING STUDENTS ACCESS TO SIEMENS CONNECTED CURRICULUM AND THE BRAND NEW DIGITAL INNOVATION ZONE

IN THE PAST THREE YEARS, OVER 750 ENGINEERING STUDENTS HAVE COMPLETED AN INDUSTRIAL PLACEMENT YEAR



See the Diamond, one of the University's engineering facilities, through a 360° virtual tour:
usic.sheffield.ac.uk/diamond-VR

STATE-OF-THE-ART FLIGHT SIMULATORS



**Born in Colombia.
Made in Sheffield.**

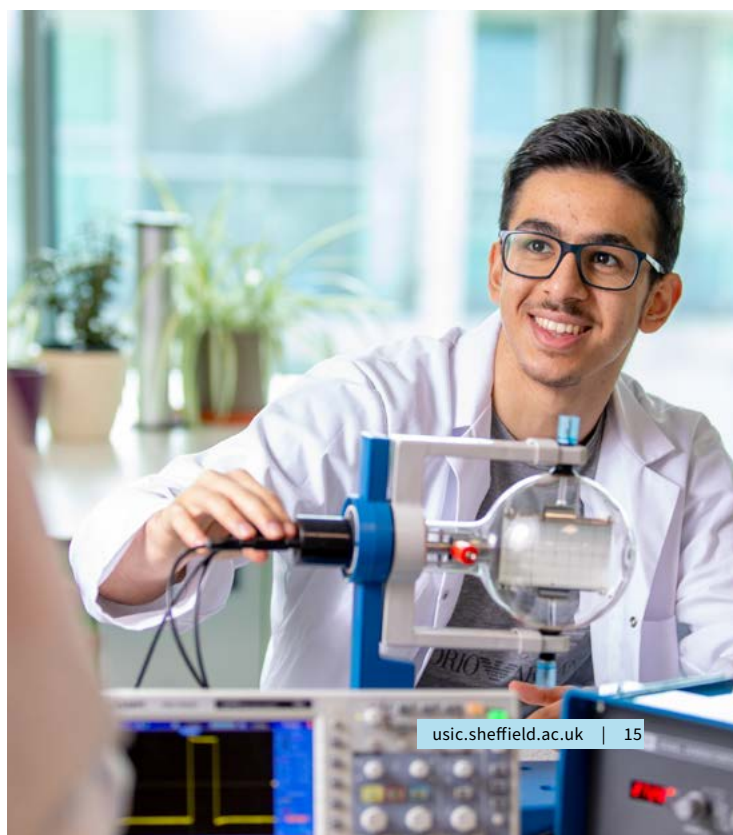
"In College, the labs were strict in the sense that you had to write everything down... coming to work, because of all the legal regulations like good manufacturing practice, all the laws that you need to follow, you also need to write everything down, be really neat. Like you need to make sure that whoever reads your process during the test, they need to be able to repeat it. And having the experience from College really helped. I still get the comments of 'Your notes are really easy to read.'"

JOSE

Studied International Foundation Year.
Graduated with MEng (Hons) Biomedical Engineering.
Secured a job as a Development Engineer at Smith+Nephew, UK.



SPECIALIST LABORATORIES AND FACILITIES



International Foundation Year progression degrees

Choose from **over 145 undergraduate degrees** available from the International Foundation Year, subject to meeting progression requirements. Please note some progression degrees are not available from the 1.5 semester programme. Places may be limited on some courses, so you are advised to apply and confirm your place as soon as possible. These degrees are subject to availability and may change at the University's discretion. **Please refer to the website for full and up-to-date details.**

International Foundation Year Business, Social Sciences and Humanities

Degree Programmes	Pathway
Accounting and Financial Management BA (Hons)	BM&F
Accounting and Financial Management and Economics BA (Hons)	BM&F
Architecture BA (Hons) *	A
Architecture and Landscape BA (Hons) *	A
Business Management BA (Hons)	BM&F
Business Management and Economics BA (Hons)	BM&F
Criminology BA (Hons)	SS&H
Data Science BSc (Hons)	BM&F / E / SS&H
Digital Media and Society BA (Hons)	SS&H
East Asian Studies BA (Hons)	SS&H
Economics BA (Hons)	E
Economics BSc (Hons)	E
Economics and Mathematics BSc (Hons)	E
Economics and Politics BA (Hons)	E
Economics with Finance BSc (Hons)	E
English and History BA (Hons)	SS&H
English and Music BA (Hons)	SS&H
English Language and Linguistics BA (Hons)	SS&H
English Language and Literature BA (Hons)	SS&H
English Literature BA (Hons)	SS&H
Financial Mathematics BSc (Hons)	E
Geography BA (Hons)	A
Geography and Planning BA (Hons)	A
Global Sustainable Development BA (Hons)	A
History BA (Hons)	SS&H
International Business Management with Study Abroad BA (Hons) ^	BM&F
International Relations and Politics BA (Hons)	SS&H
Journalism Studies BA (Hons) **† ^	SS&H
Landscape Architecture BA (Hons) ‡	A
Landscape Architecture MLA #	A
Law LLB (Hons)	SS&H
Law (European and International) LLB (Hons)	SS&H
Law and Criminology LLB (Hons)	SS&H
Mathematics BSc (Hons)	E
Mathematics MMath (Hons)	E
Mathematics and Philosophy BSc (Hons)	E
Mathematics and Statistics BSc	E
Mathematics and Statistics MMath (Hons)	E
Modern Languages and Cultures BA (Hons)	SS&H
Music BMus (Hons) !	SS&H
Music and Korean Studies BA (Hons) !‡	SS&H
Music and Modern Languages and Cultures BA (Hons) !	SS&H
Philosophy BA (Hons)	SS&H

Degree Programmes	Pathway
Philosophy, Politics and Economics BA (Hons)	SS&H
Philosophy, Religion and Ethics BA (Hons)	SS&H
Politics and Philosophy BA (Hons)	SS&H
Politics and Sociology BA (Hons)	SS&H
Psychology BSc (Hons)	BM&F / E / SS&H
Social Sciences BA (Hons)	SS&H
Sociology BA (Hons)	SS&H
Urban Studies and Planning MPlan (Hons)	A

Pathway key:

(A) Architecture, Landscape and the Urban Environment
(BM&F) Business, Management and Finance
(E) Economics
(SS&H) Social Science and Humanities

* Design portfolio required at application to the International College.

‡ Language degrees not suitable for native speakers.

^ Students must be 18 or over when starting their degree.

** Students wishing to progress to these degree programmes at the University will require an English level of IELTS 0.5 or equivalent higher than the standard level of entry to their International Foundation Year.

† Pass in a blog and interview is required as well as meeting the progression requirements.

‡ Portfolio will be completed at the International College and students need to pass as well as meeting the academic progression requirements.

! Grade 8 Practical (ABRSM/Trinity/Rockschool) at Merit + Grade 5 theory (ABRSM/Trinity) at Merit or equivalent. Students without the required Music qualifications need to submit their portfolio (1-2 pieces of recorded performance video or compositions), which will be assessed by the School before students can be admitted to the International College.

^ Blog chat required.

This is a five-year integrated masters course, which includes one year working in a professional landscape practice. Students need to create a portfolio during their pathway programme and present it with a personal statement to the Department for approval before progression.

International Foundation Year

Science and Engineering

Degree Programmes	Pathway
Aerospace Engineering BEng (Hons)	P&E
Aerospace Engineering MEng (Hons)	P&E
Architectural Engineering MEng (Hons)	P&E
Biochemistry BSc (Hons) !	B&LS
Biological Sciences BSc (Hons) !	B&LS
Biological Sciences MBiolSci (Hons) !	B&LS
Biomedical Engineering BEng (Hons)	P&E / C&E
Biomedical Engineering MEng (Hons)	P&E / C&E
Biomedical Science BSc (Hons) !	B&LS
Biomedical Science MBiolSci (Hons) ^!	B&LS
Chemical Engineering BEng (Hons)	C&E
Chemical Engineering MEng (Hons)	C&E
Chemistry BSc (Hons)	C&E
Chemistry MChem (Hons)	C&E
Chemistry with Biological and Medicinal Chemistry BSc (Hons) !	C&E
Chemistry with Biological and Medicinal Chemistry MChem (Hons)	C&E
Civil and Structural Engineering MEng (Hons)	P&E
Civil Engineering BEng (Hons)	P&E
Civil Engineering MEng (Hons)	P&E
Computer Science BSc (Hons)	P&E
Computer Science MComp	P&E
Computer Science (Artificial Intelligence) BSc (Hons)	P&E
Computer Science (Artificial Intelligence) MComp	P&E
Computer Science (Artificial Intelligence) with an Industrial Placement Year BSc (Hons)	P&E
Computer Science (Software Engineering) BEng (Hons)	P&E
Computer Science (Software Engineering) MEng (Hons)	P&E
Computer Systems Engineering BEng (Hons)	P&E
Computer Systems Engineering MEng (Hons)	P&E
Data Science BSc (Hons)	ALL
Electrical and Electronic Engineering BEng (Hons)	P&E
Electrical and Electronic Engineering MEng (Hons)	P&E
Environmental Science BSc (Hons) ^	ALL
Financial Mathematics BSc (Hons)	P&E
General Engineering BEng (Hons)	P&E
General Engineering MEng (Hons)	P&E
Geography BSc (Hons) ^	ALL
Materials Science and Engineering BEng (Hons)	C&E
Materials Science and Engineering MEng (Hons)	C&E
Mathematics BSc (Hons)	P&E
Mathematics MMath (Hons)	P&E
Mathematics and Philosophy BSc (Hons)	P&E
Mathematics and Statistics BSc (Hons)	P&E
Mathematics and Statistics MMath (Hons)	P&E
Mechanical Engineering BEng (Hons)	P&E
Mechanical Engineering MEng (Hons)	P&E
Mechatronic and Robotic Engineering BEng (Hons)	P&E
Mechatronic and Robotic Engineering MEng (Hons)	P&E
Orthoptics BMedSci (Hons) ^† !	P&E / C&E
Pharmacy MPharm ‡	B&LS / C&E
Physics BSc (Hons)	P&E

Degree Programmes	Pathway
Physics MPhys (Hons)	P&E
Physics and Astrophysics BSc (Hons)	P&E
Physics and Astrophysics MPhys (Hons)	P&E
Psychology BSc (Hons) !	B&LS
Theoretical Physics BSc (Hons)	P&E
Theoretical Physics MPhys (Hons)	P&E
Zoology BSc (Hons) !	B&LS
Zoology MBiolSci (Hons) !	B&LS

Pathway key:

(B&LS) Biological, Medical and Life Sciences
(C&E) Chemistry and Engineering
(P&E) Physics and Engineering

^ Students must be 18 or over when starting their degree.

! Not available for March starters.

† Students must attend a minimum of two events organised by Orthoptics and Ophthalmology within the School of Allied Health Professions, Nursing and Midwifery. In addition, they must successfully pass an interview conducted by the School. Students are also required to complete an occupational health check, receive the necessary vaccinations, and undergo an Enhanced Disclosure check through the Disclosure and Barring Service (DBS).

^ This progression degree is only available for March starters via the C&E or P&E pathway routes.

‡ The International College can admit ten students onto the International Foundation Year, available for the September intake only. As part of the admissions process, applicants will be required to complete an aptitude assessment. To progress to the University degree course, students must successfully pass an interview to meet the requirements of the National Health Service and relevant professional bodies. They must also complete an occupational health check, receive the necessary vaccinations, undergo an Enhanced Disclosure check via the Disclosure and Barring Service (DBS), and demonstrate the expected standards of professional behaviour.

Undergraduate pathway

International Year One

The International Year One is an intensive programme equivalent to the first year of an undergraduate degree. It is designed to fully prepare you for entry into the second year of your chosen undergraduate course at the University of Sheffield.

Developed in collaboration with the University of Sheffield, the pathway includes academic subjects, study skills and English language preparation. Upon successful completion of the International Year One, and achieving the required grades, you will enter the second year of your chosen undergraduate degree at the University of Sheffield. This route allows you to graduate in the typical three years.

Study structure

You can choose one of two routes:

Business Management and Accounting

This will provide a strong foundation and provide you the vital academic skills in the dynamic fields of business management, accounting and finance, equipping yourself with the knowledge to excel in your academic journey.

Economics

This will equip you with a solid foundation in economics, essential academic skills as well as analytical expertise needed to thrive in your academic journey and beyond.

Progression degrees

The International Year One leads to a range of undergraduate degrees, subject to meeting progression requirements. These degrees are subject to availability and may change at the University's discretion. Please refer to the progression degrees listed on page 21. For the latest list and up-to-date entry requirements, please visit our website.



For more information:
usic.sheffield.ac.uk/programmes/international-year-one

International Year One: key facts

Course length

2 semesters

Entry points

September, November (Enhanced Induction) or January^A

Age

Students should be at least 17 years of age on entry to the International College.

Entry requirements

Academic: Good high school graduation grades or equivalent, plus one year of further study. For more information on country-specific requirements, please see the website.

English language: See the study plan below.

^AFrom 2027, the International Year One Economics will have a single-entry point in September.

English Language Preparation

If you need further language training before you start the International Year One, you can join our intensive English Language Preparation programme. This course is taught in partnership with the University's English Language Teaching Centre and is designed to improve your English language skills to the necessary level. At the end of your English language preparation programme, you will start the International Year One, providing you have achieved the required language level.

English Language Preparation: key facts

Our English Language Preparation programme for International Year One is delivered online.

Course length and entry point

Online (leading to International Year One in January):

10 weeks: September

Study plan options

Academic IELTS for UKVI	Course length	Start	September-December	January-March	March-June	July-August	September
5.5 (minimum 5.5 in writing, no skill below 5.0)	2 semesters	September or January	IY1	IY1		Holiday/re-sits*	Start second year of your undergraduate degree at the University of Sheffield
5.5 (minimum 5.5 in writing, no skill below 5.0)	3 weeks EI + 2 semesters	November	EI	IY1			

EI – Enhanced Induction IY1 – International Year One

*Re-sits for the September starters take place end of May. Re-sits for the January starters take place end of August.

International Year One

Business Management and Accounting

This route will prepare you to join the second year of your exciting undergraduate degree at the University of Sheffield's Management School.

Developed in collaboration with the University, the modules are aligned to your field of study. As part of the International Year One, you will also study dedicated English language content that is focused on improving your speaking, writing and academic language skills. You will enhance both your academic and English language skills needed for your undergraduate degree.

Core modules

- Academic English Skills
- Economics and Human Behaviour Contexts in Business

Pathway modules (related to your degree choice)

The modules you will study depend on what pathway you are planning to study at the University of Sheffield:

Accounting (A)

- Foundations in Financial Management
- Introduction to Financial Accounting
- Introduction to Management Accounting
- Statistical Methods for Economics
- Professional Self Management

Accounting and Economics (A&E)

- Foundations in Financial Management
- Introduction to Financial Accounting
- Introduction to Management Accounting
- Mathematical Methods for Economics
- Principles of Macroeconomics
- Principles of Microeconomics

Business Management (BM)

- Business Management in Context
- Introduction to Financial Accounting
- Management Themes and Perspectives
- Professional Self Management
- Statistical Methods for Economics

Business Management and Economics (BM&E)

- Business Management in Context
- Management Themes and Perspectives
- Mathematical Methods for Economics
- Principles of Macroeconomics
- Principles of Microeconomics

University-style teaching

The University of Sheffield International College introduces you to the style of teaching that you will experience on your degree. Taking part in tutorials, seminar-style classes and larger group lectures means that you will be well prepared for an undergraduate degree at the University.

Assessment

You will be assessed regularly throughout the course. Your development is monitored through coursework during the semesters and assessments at the end of each semester. Some of these assessments might take the form of examinations. You may also need to complete a series of presentations and extended essays as part of your overall assessment.

**OPPORTUNITY TO GET TO KNOW
YOUR PEERS AND STUDENTS
ON OTHER COURSES THROUGH
THE SCHOOL'S BALANCE AND
BELONGING EVENTS**

**BENEFIT FROM THE INDUSTRY-
STANDARD TRADING ROOM,
KITTED OUT WITH BLOOMBERG
AND REFINITIV EIKON TERMINALS**

International Year One

Economics

The International Year One in Economics will give you all the support and guidance you need to start your second year of your chosen undergraduate degree at the University of Sheffield's School of Economics.

Developed in collaboration with the University, the modules are aligned to your field of study. You will also study dedicated English language content to strengthen your speaking, writing and academic language skills, ensuring you are well prepared for your undergraduate degree in economics.

Core modules

- Academic English Skills
- Mathematical Methods for Economics
- Principles of Macroeconomics
- Principles of Microeconomics

Pathway modules (related to your degree choice)

The modules you will study depend on what subject you are planning to study at the University of Sheffield:

Accounting and Economics (A&E)

- Foundations in Financial Management
- Introduction to Financial Accounting
- Introduction to Management Accounting

Business Management and Economics (BM&E)

- Business Management in Context
- Economics and Human Behaviour Contexts in Business
- Management Themes and Perspectives

Economics (E)

- Foundations in Financial Management
- Professional Self Management
- Statistical Methods for Economics

University-style teaching

The University of Sheffield International College introduces you to the style of teaching that you will experience on your degree. Taking part in tutorials, seminar-style classes and larger group lectures means that you'll be well prepared for an undergraduate degree at the University.

Assessment

You will be assessed regularly throughout the course. Your development is monitored through coursework during the semesters and assessments at the end of each semester. Some of these assessments might take the form of examinations. You may also need to complete a series of presentations and extended essays as part of your overall assessment.

**SHEFFIELD ECONOMICS
EMPLOYABILITY DEVELOPMENT
(SEED) HELPS YOU GROW YOUR
SKILLS AND CAREER PROSPECTS
THROUGH TAILORED EVENTS**

**HOME TO EUROPE'S LARGEST
STUDENT RUN INVESTMENT FUND**

International Year One progression degrees

These degrees are subject to availability and may change at the University's discretion.

Please refer to the website for full and up-to-date details.

International Year One

Business Management and Accounting

Degree Programmes	Pathway
Accounting & Financial Management BA (Hons)	A
Accounting and Financial Management and Economics BA (Hons)	A / A&E
Business Management and Economics BA (Hons)	BM&E
Business Management BA (Hons)	BM

Pathway key:

- (A) Accounting
- (A&E) Accounting and Economics
- (BM) Business Management
- (BM&E) Business Management and Economics

International Year One

Economics

Degree Programmes	Pathway
Accounting and Financial Management and Economics BA (Hons)	A&E
Business Management and Economics BA (Hons)	BM&E
Economics BA (Hons)	E
Economics BSc (Hons)	E
Economics with Finance BSc (Hons)	E

Pathway key:

- (A&E) Accounting and Economics
- (BM&E) Business Management and Economics
- (E) Economics

Postgraduate pathway

Pre-Masters

The Pre-Masters programme at the University of Sheffield International College offers a path to postgraduate study for international students.

This course is an intensive 1.5 or 2 semester programme of academic subjects, study skills and English language preparation. It has been designed specifically to prepare you for masters study at the University of Sheffield. This programme is for you if you do not meet the direct entry requirements for a masters degree, want to refresh your skills, or want to be better prepared for the style of study required during a UK masters degree. Once you successfully complete your Pre-Masters programme and achieve the required progression grades, you can proceed to your postgraduate degree at the University.

Study structure

You can choose one of two routes:

Business, Social Sciences and Humanities

This will prepare you for a taught postgraduate degree in the Faculty of Social Sciences, including the School of Law, the Management School, and the School of Architecture and Landscape. It can also lead to degrees in the Faculty of Arts and Humanities and other areas too.

Science and Engineering

This will prepare you for a taught postgraduate degree in the Faculty of Engineering or Faculty of Science, and a small number of programmes in other faculties, such as Health. For each of our programmes, there are subject-specific pathways based on your progression degree.

Progression degrees

The Pre-Masters leads to a wide range of postgraduate degrees, subject to meeting progression requirements. These degrees are subject to availability and may change at the University's discretion. Please refer to the progression degrees listed on page 22 and 23. For the latest list and up-to-date entry requirements, please visit our website.



For more information:
usic.sheffield.ac.uk/programmes/pre-masters

Pre-Masters: key facts

Course length

1.5 or 2 semesters

Entry points

1.5 semesters: March

2 semesters: September, November (Enhanced Induction) or January

Age

Students will normally be 19 years of age or older.

Entry requirements

Academic: Recognised degree – in a related field for most subjects.

For more information on country-specific requirements, please see the website.

English language: See the study plan below.

English for Pre-Masters

If you need additional language training before you start your Pre-Masters, depending on your degree choice, you may be able to join our intensive English for Pre-Masters programme. This is taught in partnership with the University's English Language Teaching Centre and is designed to improve your English language skills to the necessary level. At the end of your English language preparation programme, you will start the Pre-Masters programme, providing you have achieved the required language level.

English for Pre-Masters: key facts

Our English for Pre-Masters programme is delivered either on campus or online depending on the intake date and your English language level:

Course length and entry points

On campus (leading to 2 semesters Pre-Masters):

1 term: June or September

2 terms: March or June

Online (leading to 2 semesters Pre-Masters):

10 weeks: June or September

Online (leading to 1.5 semesters Pre-Masters):

7 weeks: January

Study plan options

Academic IELTS for UKVI ^A	Course length	Start	September-December	January-March	March-June	July-August	September
5.5 (5.5 in all skills)	2 semesters	September or January	PMP			Holiday/re-sits*	Start your postgraduate degree programme at the University of Sheffield
5.5 (5.5 in all skills)	3 weeks EI + 2 semesters	November	EI	PMP			
6.0 (5.5 in all skills)	1.5 semesters	March			PMP		

EI – Enhanced Induction **PMP** – Pre-Masters programme

*Re-sits for the September starters take place end of May. Re-sits for the January and March starters take place end of August.

^AAlternative equivalent assessment are accepted provided you meet all the programme entry requirements.

Note: Students wishing to progress to some degree programmes at the University will require an English level of IELTS 0.5 or equivalent higher than the standard level of entry to their Pre-Masters programme. See the website for more information.

Pre-Masters

Business, Social Sciences and Humanities

This course provides a route to a number of masters degrees in the Faculties of Arts and Humanities and Social Sciences, including the Management School, the School of Law, and School of Architecture and Landscape.

Your programme will be tailored to prepare you for your chosen degree, studying the most relevant modules to your subject area. Some of the modules listed will be compulsory for progression on to specific degree programmes at the University. To join a Pre-Masters pathway, you may need a relevant first degree.

Core modules

- Academic English Skills
- Research Project

Pathway modules (related to your degree choice)

There is a choice of five pathways, with modules tailored to your aims:

Business, Management and Finance (BM&F)

- Accounting and Finance
- Management

Economics (E)

- Advanced Economics
- Statistics

Information Studies (IS)

- Social Science
- Statistics

Law and Criminology (L&C)

- Advanced Law
- Social Science

Social Sciences & Humanities (SS&H)

- Communication, Cultures and Heritage
- Social Science

University-style teaching

The University of Sheffield International College introduces you to the style of teaching that you will experience on your degree. Taking part in tutorials, seminar-style classes and larger group lectures will prepare you for your masters at the University.

Assessment

You will be assessed regularly throughout the course. Your development is monitored through coursework during the semesters and assessments at the end of each semester. Some of these assessments might take the form of examinations. You may also need to complete a series of presentations and extended essays as part of your overall assessment.

**SHEFFIELD UNIVERSITY
MANAGEMENT SCHOOL IS
TRIPLE ACCREDITED:
AACSB, AMBA & EQUIS**



**Born in China.
Made in Sheffield.**

“I have a plan to apply for a PhD degree in the UK and my friend told me that if I study in the International College before my masters, I can have the experience of learning academic English skills, like how to write in a formal format and it will help me to have a high mark in the masters degree. So then it will be more helpful for me to apply for a higher degree in the UK.

The style of teaching is very helpful. It's very different from the way our Chinese teachers are teaching... In summary, in China the teacher puts the knowledge into our brain, but here the teacher helps us to acquire the knowledge by ourselves.”

YINGJIE (ALEX)

Studied Pre-Masters programme.
Progressed to MSc Finance and Accounting.



Find out more about Yingjie's story:
bit.ly/Yingjie_story

Pre-Masters

Science and Engineering

This course provides a route to a number of masters degrees in the Faculty of Engineering and Faculty of Science, as well as a small number of degrees in other faculties.

Your Pre-Masters will include a combination of academic subjects, study skills and English language preparation. You will study modules relevant to your chosen subject area. Some of the modules listed will be compulsory for progression on to specific degree programmes at the University. To join a Pre-Masters pathway, you may need a relevant first degree.

Core modules

- Academic English Skills
- Research Project for STEM
- Statistics

Pathway modules (related to your degree choice)

There is a choice of two pathways, with modules tailored to your aims:

Computing and Computer Science (C&CS)

- Programming

Physical Sciences and Engineering (PS&E)

- Mathematics

University-style teaching

The University of Sheffield International College introduces you to the style of teaching that you will experience on your degree. Taking part in tutorials, seminars, lectures and laboratory work means that you will be well prepared for a masters degree at the University.

Assessment

You will be assessed regularly throughout the course. Your development is monitored through coursework during the semesters and assessments at the end of each semester. Some of these assessments might take the form of examinations. You may also need to complete a series of presentations and extended essays as part of your overall assessment.



See the Diamond, one of the University's engineering facilities, through a 360° virtual tour:
usic.sheffield.ac.uk/diamond-VR

Pre-Masters progression degrees

Choose from **over 115 postgraduate degrees** available from the Pre-Masters programme, subject to meeting progression requirements. Places may be limited on some courses, so you are advised to apply and confirm your place as soon as possible. These degrees are subject to availability and may change at the University's discretion. **Please refer to the website for full and up-to-date details.**

Note: Some progression degrees require specific academic background for application/confirmation.

Pre-Masters

Business, Social Sciences and Humanities

Degree Programmes	Pathway
Applied Linguistics and TESOL MA	SS&H
Archaeology and Heritage MA	ALL
Architectural Design MA ^Δ	SS&H
Business Administration MBA ^Ø	BM&F
Business Finance and Economics MSc	E
Cognitive Science and Philosophy of AI MA	SS&H
Corporate and Commercial Law LLM	L&C
Creative and Cultural Industries Management MSc	BM&F
Cultural Heritage MA	SS&H
Data and Digital Humanities MSc	SS&H
Data Science MSc	IS
Digital Culture & Communications MA	SS&H
Digital Media and Society MA	SS&H
East Asian Business MSc	SS&H
Economics MSc	E
Education MA	SS&H
English Literature MA ‡ †	SS&H
Environmental Science and Data MSc	SS&H
Finance MSc	E
Finance and Accounting MSc	BM&F
Geographical Information Systems (GIS) MSc	SS&H
Global Journalism MA	SS&H
History MA	SS&H
Human Resource Management MSc	BM&F
Information Management MSc	IS
Information Systems MSc	IS
Information Systems Management MSc	IS
International Criminology MA	L&C
International Development MSc	SS&H
International Law and Global Justice LLM	L&C
International Management MSc	BM&F
International Marketing and Management MSc	BM&F
International Political Economy MA	SS&H
International Public and Political Communication MA	SS&H
International Relations MA	SS&H
Journalism MA ^{**^}	SS&H
Law MA [*]	L&C
Logistics and Supply Chain Management MSc	BM&F
Management MSc	BM&F
Management and International Business MSc	BM&F
Money, Banking and Finance MSc	E
Music, Management and Innovation MA	SS&H
Musicology MA	SS&H
Music Performance Studies MA !	SS&H
Music Performance Studies (Piano) MA !	SS&H
Philosophy MA	SS&H

Degree Programmes	Pathway
Politics and Media in East Asia MA	SS&H
Politics, Governance and Public Policy MA	SS&H
Psychology and Education (Conversion) MSc	SS&H
Psychology and Education MA	SS&H
Psychology of Music MA	SS&H
Real Estate MSc	SS&H
Strategic Marketing and Branding MSc	BM&F
Translation and Intercultural Studies MA	SS&H
Urban Design and Planning MSc	SS&H
Urban and Regional Planning MSc	SS&H

Pathway key:

(BM&F) Business, Management and Finance
 (E) Economics
 (IS) Information Studies
 (L&C) Law and Criminology
 (SS&H) Social Sciences & Humanities

- * Two-year programme at the University. The MA is designed for graduates who don't have a law degree.
- ** Students wishing to progress to these degree programmes at the University will require an English level of IELTS 0.5 or equivalent higher than the standard level of entry to their Pre-Masters programme.
- ^Δ Design portfolio on entry to the International College assessed by Study Group (sample portfolios of adequate standard will be provided by the School to the College selection team).
- [^] Pass in a blog and interview is required.
- ! Portfolio submission - progression must be via a video audition on principal instrument. This is required before progression at the end of the Pre-Masters programme.
- ^Ø At least three years relevant full-time work experience after graduation with some managerial experience and interview is required.
- ‡ A portfolio of prose/drama (2,000 words) or five poems need to be submitted to the Course Director for approval by the end of the Pre-Masters programme.
- † An indicative piece of the student's academic writing that demonstrates their competence in written English and critical thinking, breadth of reading, ability to subject literary texts to close analysis need to be submitted to the Course Director for approval by the end of the Pre-Masters programme.

Pre-Masters Science and Engineering

Degree Programmes	Pathway
Advanced Computer Science MSc	C&CS
Advanced Control and Systems Engineering MSc	C&CS
Advanced Mechanical Engineering MSc	PS&E
Advanced Metallurgy MMet	PS&E
Aerospace Engineering MSc	PS&E
Artificial Intelligence MSc	C&CS
Artificial Intelligence for Engineering MSc	PS&E
Astrophysics MSc	PS&E
Biological and Bioprocess Engineering MSc (Eng)	PS&E
Biomedical Engineering MSc	PS&E
Chemistry MSc	PS&E
Civil and Structural Engineering MSc [^]	PS&E
Civil Engineering and Project Management MSc	PS&E
Cognitive and Computational Neuroscience MSc	PS&E
Cognitive Neuroscience and Human Neuroimaging MSc	PS&E
Computer Science with Speech and Natural Language Processing MSc	C&CS
Cybersecurity and Artificial Intelligence MSc	C&CS
Drug Discovery Science MSc	PS&E
Electronic and Electrical Engineering MSc (Eng)	PS&E
Energy Engineering with Industrial Management MSc	PS&E
Materials Science and Engineering MSc	PS&E
Mechanical Engineering and Industrial Management MSc	PS&E
Pharmaceutical Engineering MSc	PS&E
Process Safety and Loss Prevention MSc (Eng)	PS&E
Psychological Research Methods MSc	PS&E
Robotics MSc	C&CS
Statistics MSc	PS&E
Sustainability and Energy Engineering MSc (Eng)	PS&E
Wireless Communications Systems MSc (Eng)	PS&E

Pathway key:

(C&CS) Computing and Computer Science
(PS&E) Physical Sciences and Engineering

[^] This degree is accredited as meeting the requirements for Further Learning for a Chartered Engineer (CEng) for candidates who have already acquired a partial CEng accredited undergraduate first degree.



**Born in Egypt.
Made in Sheffield.**

“My best time was during foundation year. I got to know the places, the restaurants, the accommodation I wanted to join. I didn’t want to just go straight to university.

One of the best skills I had from the foundation year was how to work in a group, how to communicate with people that you’re not friends with. You’re getting familiar with deadlines, you’re getting familiar with like assignments and stuff, because we didn’t really have that in school. So it’s the best preparation for university. When I went to university, I expected everything and I was not surprised with what was happening around me.”

MOHAMED

Studied International Foundation Year.
Progressed to BEng (Hons) Aerospace Engineering.



Student insurance

We strongly recommend that international students have the protection of personal insurance whilst in the UK. You may wish to purchase our “StudyCare Insurance Plus” cover or arrange your own.

StudyCare Insurance Plus is specifically designed for international students’ needs during your studies at the International College and, if required, after progressing to your university.

Our insurance cover is available for up to 12 months or 24 months (fixed), allowing you to choose the policy length that suits you. Both lengths cover travel to the UK, loss of personal possessions as well as providing health and medical insurance. You can purchase StudyCare Insurance Plus as part of the application process. Visit our website for more information studygroup.com/studycare.

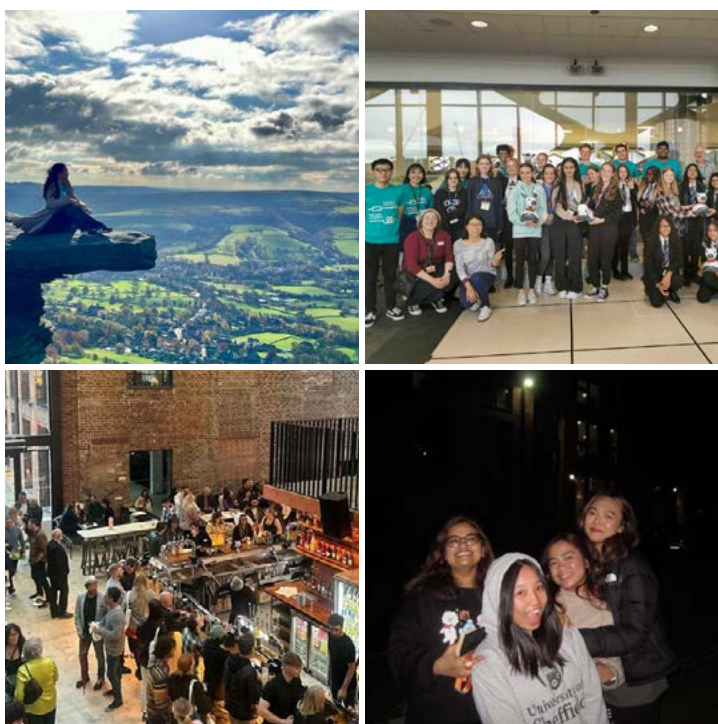
How to apply

If you would like to apply to study at the University of Sheffield International College, you will need to complete an application form and submit the relevant documentation.

You can apply through your local education agent. Alternatively you can apply directly via our website and one of our dedicated Student Enrolment Advisors will be happy to provide support through every step of the application process.



Full information on how to apply, fees, entry requirements and more, visit:
usic.sheffield.ac.uk/how-to-apply






Ask us your questions

Our Student Ambassadors are available to answer your questions about studying in Sheffield.



Start a chat with one of them today:
bit.ly/Ask_a_friend

JOIN US ON SOCIAL MEDIA

 /UniversityofSheffieldInternational
 @sheffield_ic
 /TheUniversityofSheffieldInternationalCollege
#MadeInSheffield

SCHOLARSHIPS



Scholarships are available for the pathway programme and the degree study at the University of Sheffield. Please visit our website for more information: usic.sheffield.ac.uk/how-to-apply/scholarships

ONLINE EVENTS

We know that there is a lot to consider when researching and choosing where to study. Our virtual sessions cover different aspects of studying at the International College, the University life and living in the city of Sheffield.

Each session features a variety of speakers, including our College staff and Student Ambassadors. These sessions will also give you the opportunity to ask any questions you may have about studying in Sheffield.



Join our upcoming virtual events:
usic.sheffield.ac.uk/international-college/virtual-events



Disclaimer

This guide is intended as a general guide for students considering entry to the University of Sheffield International College from 2026. The University of Sheffield International College is operated, and its programmes offered by Study Group Limited ('Study Group'). This guide forms no part of any contract between you and Study Group except as provided below.

The guide is prepared in advance of the academic year to which it relates, and Study Group makes every effort to ensure that the information contained here is accurate. Although reasonable steps are taken by Study Group to provide the programmes and services described, Study Group cannot guarantee the provision of any programme. Any programme may be altered or withdrawn owing to circumstances beyond Study Group's reasonable control.

Such circumstances include (but are not limited to) industrial action, lack of demand, departure of key personnel, change in government policy, withdrawal, or reduction of funding, change of law or changes necessitated by pandemic or epidemic.

Study Group will take such steps as are available to it to minimise the effect of any alteration or withdrawal of a programme and we will notify you of such alteration or withdrawal as soon as possible. Such steps may include the offer of a place on an alternative programme. Alternatively you may withdraw your application without any liability for fees (including the enrolment fee).

Please note that University of Sheffield International College's website is the most up-to-date source of information regarding programmes and facilities, and we strongly recommend that you always visit the website before making any commitments.

The University of Sheffield and its logo are registered Trade Marks of the University of Sheffield. 'Study Group' and the Study Group logo are registered Trade Marks of Study Group. Unless otherwise stated, all material in this publication is copyright of Study Group. No part of this publication may be reproduced, stored in a retrieval system or transmitted in any form, or by any means, electronic, mechanical, photocopying, recording or otherwise, without the permission of Study Group.

For more information, please visit studygroup.com

