

Powder Coatings Product Catalogue 2022



PPG ENVIROCRON® Powder Coatings Stock Availability - EMEA



We protect and
beautify the world®

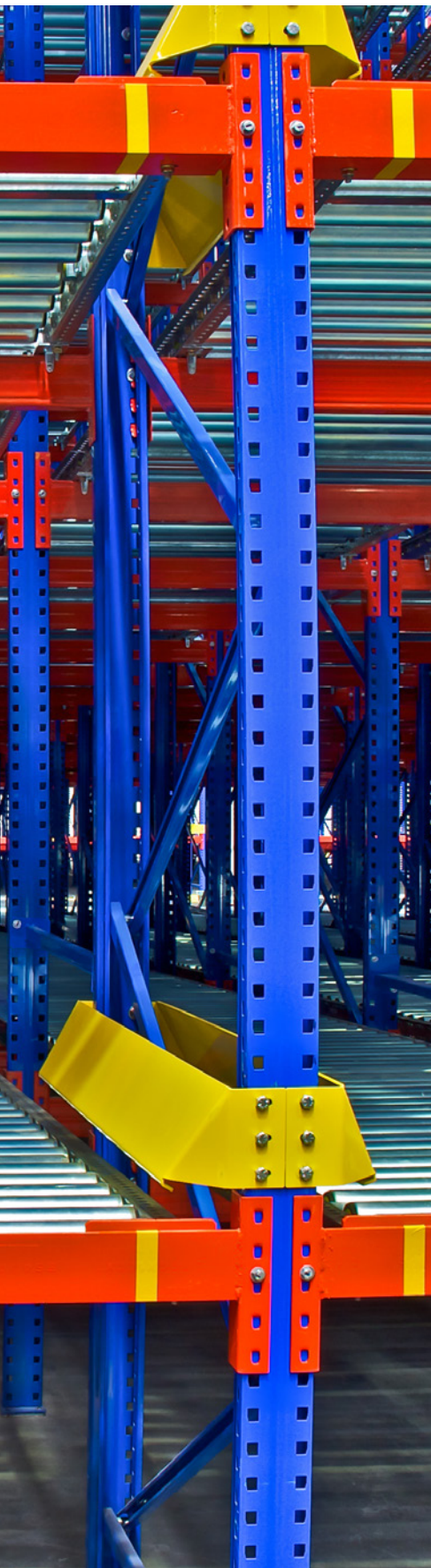


Table of contents

Powder coatings from PPG	2
The PPG Benefit	2
Technologies and performances	3
Codification	4
New Codification	4
Primers	5
Primer product offer	6
Industrial Indoors	7
Indoor product offer	8
Industrial Outdoors	9
Outdoor product offer	10
Architectural Outdoors	11
Gloss product offer	12
Matte product offer	16
Fine textured product offer	17
Metallics	18
Industrial metallic product offer	19
Specialties	20
Specialties for Anti-Graffiti	20
Specialties for electrical cabinet	21
Specialties for fence	21
Clearcoats	22
Clearcoat product offer	23



Powder coatings from PPG

For more than 30 years, PPG has provided manufacturers and custom coaters with world-class powder coatings that combine beautiful finishes with exceptional protection performance while limiting impact on the environment*.

A comprehensive mix of acrylic, epoxy, polyester, epoxy-polyester hybrid and urethane coatings give our customers the flexibility and formulations they require to meet their demands.

The PPG Benefit

- Global reach with local service
- Increased speed and convenience with color matching
- Advanced styling and color trend consultation
- Available in a wide variety of colors, glosses and finishes
- Reduced energy costs, TGIC NIA**, BPA NIA**
- Reclaimable
- Extreme performance protection against weathering, chip and scratch and high temperatures
- Wide variety of specialty coatings: low-cure, anti-microbial protected, high-transfer efficiency, high-edge, dielectric powder and ultradurable

*No solvent

**Non intentionally added

Suggested markets

Heavy Duty Equipment

Office Furniture & Equipment

Extrusion Coatings

General Industrial

Appliances

Transportation

Bicycles

Automotive Parts & Accessories

Consumer Electronics

Interior Building Products



Technologies and performances

PPG Product Line	Chemistry	End-use	Corrosion	UV	Added Value / Benefit
ENVIROCRON® PCM – P5 series	Epoxy	<ul style="list-style-type: none"> Protection and decoration of interior parts Gas or liquid tanks, pipelines, structural steelwork, trucks Trailers and car parts 	★★★	N/A	Chemical resistance and corrosion resistance
ENVIROCRON® PCF – P8 series	Epoxy Polyester or Hybrid	<ul style="list-style-type: none"> Domestic and industrial appliances Indoor application e.g. shelving, office furniture, partitioning, white goods Protection and decoration of interior parts 	★★	★	Good compromise for decorative parts with optimised price
ENVIROCRON® PCS – P7 series	Polyester Industrial	<ul style="list-style-type: none"> Lighting equipment and construction Electrical cabinets Industrial outdoor application e.g. agricultural machinery, garden furniture, fencing, electrical Domestic and industrial appliances Indoor application e.g. shelving, office furniture, partitioning, white goods 	★	★★	Outdoor use with enhanced UV resistance
ENVIROCRON® PCS – P4 Series	Polyester Architectural	<ul style="list-style-type: none"> Urban furniture Steel or galvanized steel for cladding Aluminum profiles and sheets Verandas, doors, window frames, facades 	★	★★	Outdoor use with enhanced UV resistance, Qualicoat & GSB approved
ENVIROCRON® PCS – P1 series	Polyester Industrial Ultra Durable	<ul style="list-style-type: none"> Trailers and automotive parts Industrial outdoor application e.g. agricultural machinery Gas or liquid tanks, pipelines, structural steelwork, trucks Lighting equipment and construction, garden furniture, fencing, electrical 	★	★★★	Outdoor use with excellent ultradurable performance
ENVIROCRON® PCS – P2 series	Polyester Architectural Ultra Durable	<ul style="list-style-type: none"> Urban furniture Steel or galvanized steel for cladding Aluminum profiles and sheets Verandas, doors, window frames, facades 	★	★★★★	Outdoor use with excellent ultradurable performance, Qualicoat & GSB approval pending
ENVIROCRON® PCA - P0 series	Acrylic	<ul style="list-style-type: none"> Car parts, e.g. trims, wheels Bicycles 		★★★★★	Outdoor use with excellent ultradurable performance, fast cure application and outstanding optical properties
ENVIROCRON® PCU - P3 series	Polyurethane	<ul style="list-style-type: none"> Car parts, e.g. trims, wheels Machinery Indoor application e.g. shelving, office furniture 	★	★★	Outdoor use with excellent chemical resistance

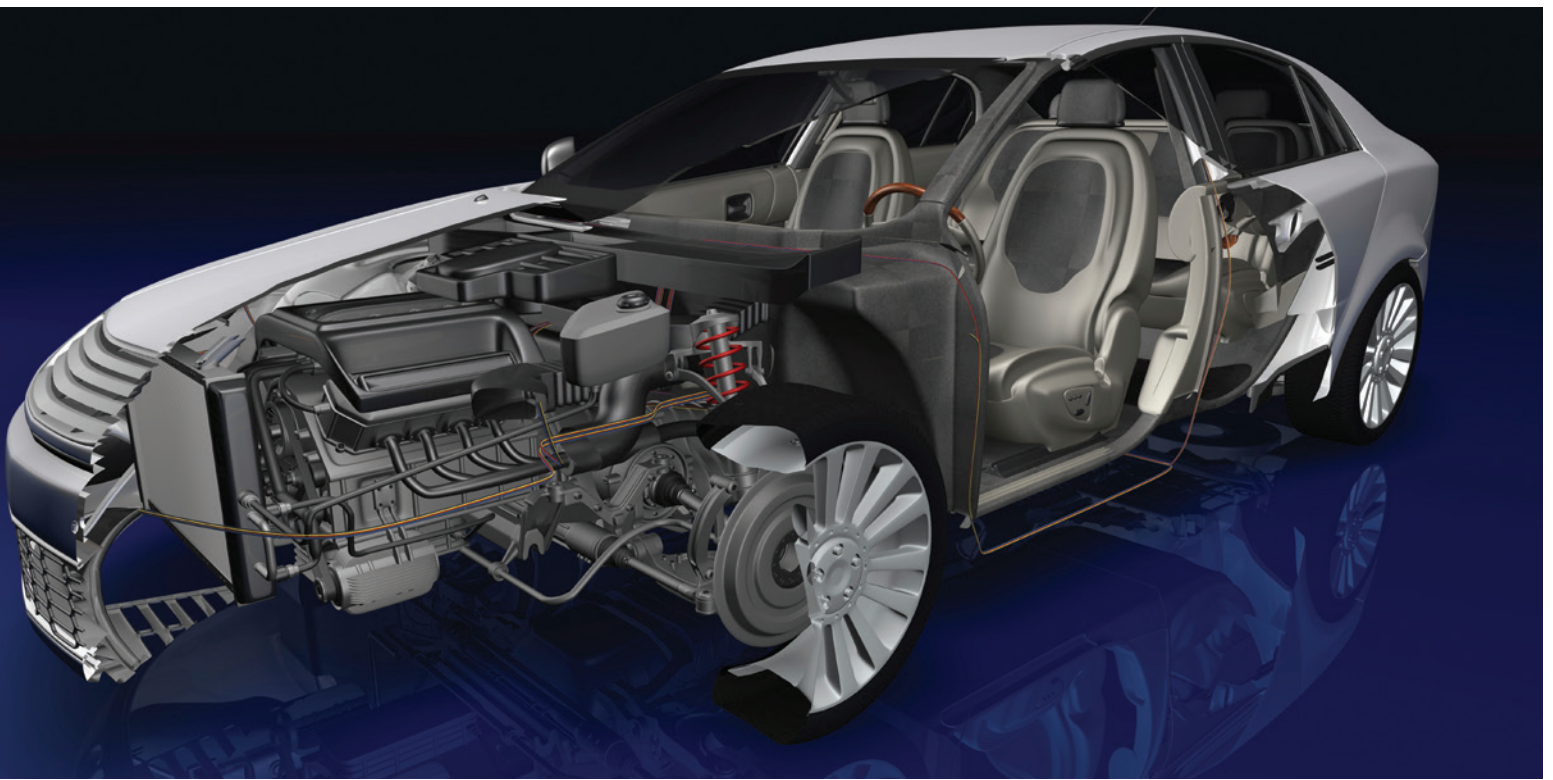
New Codification

For older codes, please contact your PPG contact.

P474W0010R-YD

1
2
3
4
5
6
7
8

Code	Description
①	TECHNOLOGY P - Powder
②	CHEMISTRY 0 - Acrylic 1 - Polyester Industrial Ultra Durable 2 - Polyester Architectural Ultra Durable 3 - Polyester Industrial Urethane 4 - Polyester Architectural 5 - Epoxy 6 - Polyester Industrial PT910 7 - Polyester Industrial 8 - Epoxy Polyester 9 - Polyester Industrial TGIC F - Hyper Durable Class 3
③	FINISH 5 - Smooth 6 - Coarse Textured 7 - Fine Textured
④	GLOSS 0 - High Gloss (>90 GU) 1 - Gloss (75-90 GU) 2 - Semi Gloss (40-75 GU) 3 - Matte (15-40 GU) 4 - Dead Matte (<15 GU)
⑤	COLOR B - Blue C - Clear E - Green G - Grey H - Brown N - Black O - Orange P - Beige Ivory R - Red V - Violet W - White Y - Yellow
⑥	COLOR CODE XXX for old product, XXXX for new products Random for customized product Number unique for Chemistry, Finish, Gloss & Colour
⑦	EFFECT R - Regular B - Bonded A - Dry Blend Z - Hammered
⑧	PACKAGING -YD - standard 20 kg box (others upon request)



Primers

PPG's ENVIRCRON® complete product portfolio offers different formulations to provide optimal anti-corrosion protection across a wide range of substrates.

Product benefits

- Excellent corrosion protection
- Excellent chemical resistance
- Zinc and specifically formulated without zinc* generation
- Low consumption
- Enhanced intercoat adhesion
- Good overcuring capability
- Extreme edge coverage

Suggested end uses

Structural steelwork

Trucks, trailers & car parts

Interior and exterior parts

Gas or liquid tanks

Pipelines



* < 100 ppm

Primer product offer

PPG Product Line	PPG ENVIROCRON® PCM - P5 Series P512G000R-YD (SAP code: 297176)	PPG ENVIROCRON® PCM - P5 Series P511G508R-YD (SAP code: 272470)	PPG ENVIROCRON® PCM - P5 Series P513G091R-YD (SAP code: 297015)	PPG ENVIROCRON® PCF - P8 Series P852G001R-YD** (SAP code: 00441728)	PPG ENVIROCRON® PCF - P8 Series P851W1006R-YF** 1 (SAP code: 00453125)
Chemistry	<ul style="list-style-type: none"> Epoxy Zinc rich 	<ul style="list-style-type: none"> Epoxy Zinc free* 	<ul style="list-style-type: none"> Epoxy Zinc free* 	<ul style="list-style-type: none"> Epoxy-polyester Zinc free* 	<ul style="list-style-type: none"> Epoxy-polyester Zinc free*
Features	<ul style="list-style-type: none"> Semi Gloss Excellent corrosion protection appr. RAL 7012 	<ul style="list-style-type: none"> Gloss Edge prime Very good corrosion protection Low density appr. RAL 7005 	<ul style="list-style-type: none"> Matte Edge prime Very good corrosion protection Low density appr. RAL 7040 	<ul style="list-style-type: none"> Semi gloss Good corrosion protection Enhanced intercoat adhesion Dark grey 	<ul style="list-style-type: none"> Gloss Good corrosion protection Enhanced intercoat adhesion Excellent flow Light grey
Benefits	<ul style="list-style-type: none"> Meets high standards of corrosion protection 	<ul style="list-style-type: none"> Meets high standards of corrosion protection Low consumption euro/m² Enhanced edge coverage 	<ul style="list-style-type: none"> Meets high standards of corrosion protection Low consumption euro/m² Enhanced edge coverage 	<ul style="list-style-type: none"> Very robust in industrial use Avoids delamination and intercoat adhesion issue 	<ul style="list-style-type: none"> Very robust in industrial use Avoids delamination and intercoat adhesion issue

PERFORMANCE	Corrosion	★★★★★	★★★★★	★★★★★	★★★★	★★★★
	UV Durability				★	★
	Mechanical properties	★	★★★	★★	★★★	★★★

SUBSTRATE	Steel	✓	✓	✓	✓	✓
	Aluminium		✓	✓	✓	

APPLICATION	Electrostatic	✓	✓	✓	✓	✓
	Tribo	✓	✓	✓	Upon request	✓

Special Features on request		Extreme edge coverage	Extreme edge coverage		
-----------------------------	--	-----------------------	-----------------------	--	--

* < 100 ppm

**Available on request

¹ Only available within the EU



Industrial Indoors

PPG's ENVIROCRON® PCF – P8 series is an epoxy-polyester industrial product specifically formulated for decorative applications. It is intended for use in a wide range of interior applications.

Product benefits

- Excellent flow and appearance
- Good balance between UV fastness and corrosion protection
- Available in a wide range of solid and metallic color, gloss finishes, and surface effects
- Formulated without heavy metals
- Low cure capabilities

Key attributes

- Customer colors
- Limited environmental impact*

*No solvent

Suggested end uses

Domestic and industrial appliances

Indoor application e.g. shelving, office furniture, partitioning, white goods

Protection and decoration of interior parts



Indoor product offer

Color	RAL	Gloss	Finish	Product Code	SAP Code
	9005	High Gloss	Smooth	P850N1007R-YD (121025)* ¹	00453108
	2004	Gloss	Smooth	P811O100R-YD	00183440
	5021	Gloss	Smooth	EPE 54.8 WATER BLUE RAL 5021	00272399
	7001	Gloss	Smooth	P811G811R-YD	00271115
	7016	Gloss	Smooth	P811G113R-YD	00271187
	7035	Gloss	Smooth	P811G817R-YD	00272928
	9003	Gloss	Smooth	P811W819R-YD	00275708
	9005	Gloss	Smooth	P821N005R-YD	00320214
	9016	Gloss	Smooth	P811W817R-YD	00272622
	9005	Semi Gloss	Smooth	P811N002R-YD*	00272952
	9016	Semi Gloss	Smooth	P812W824R-YD	00281805
	7035	Matte	Smooth	P813G025R-YD	00233578
	9005	Matte	Smooth	FA-700 CZARNA RAL 9005	00233588
	9010	Matte	Smooth	P813W031R-YD	00235083
	7016	Dead Matte	Smooth	P813G835R-YD	00268435
	7021	Matte	Fine Texture	P813G807F-YD	00181330
	7035	Semi Gloss	Coarse Texture	P862G1003R-YD (104834)* ¹	00453105
	9002	Semi Gloss	Coarse Texture	P862W1004R-YD (105600)* ¹	00453106
	7016	Matte	Coarse Texture	P863G1001R-YD (100983)* ¹	00453103



*Available on request

¹ Only available within the EU



Industrial Outdoors

PPG's ENVIROCRON® PCS – P7 series, a polyester industrial product designed for the decoration and protection of metal components for both outdoor and indoor use. It offers good weathering resistance, mechanical properties and a balance of coating properties.

Product benefits

- Excellent flow and appearance
- Good balance between UV fastness and corrosion protection
- Available in a wide range of solid and metallic color, gloss finishes, and surface effects
- Formulated without heavy metals

Key attributes

- Customer colors
- Limited environmental impact*

Suggested end uses

Lighting equipment and construction

Electrical cabinets

Industrial outdoor application e.g. agricultural machinery, garden furniture, fencing, electrical

Domestic and industrial appliances

Indoor application e.g. shelving, office furniture, partitioning, white goods



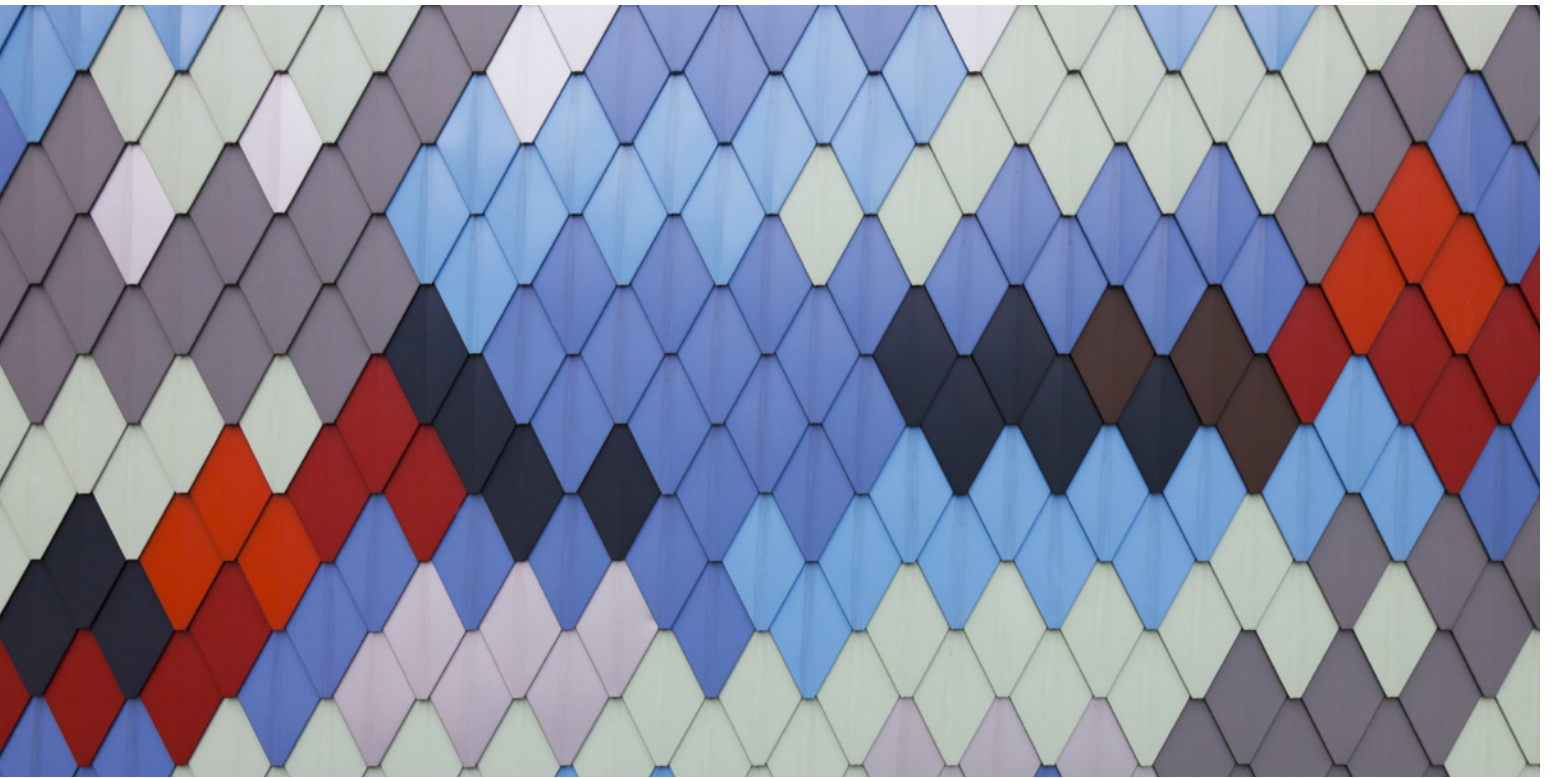
*No solvent

Outdoor product offer

Color	RAL	Gloss	Finish	Product Code	SAP Code
	6005	Gloss	Smooth	P411E800R-YD	00347301
	7016	Semi Gloss	Smooth	P712G600R-YD*	00358858
	9005	Semi Gloss	Smooth	P712N005R-YD	00320215
	9005	Matte	Smooth	P712N701M-YD	00213482
	9005	Matte	Smooth	P713N704M-YD	00213500
	9005	Matte	Fine Textured	P713N005F-YD	00322494
	1013	Gloss	Coarse Textured	P711Y704T-YD	00271494
	5010	Gloss	Coarse Textured	P711B100T-YD	00323150
	7035	Gloss	Coarse Textured	P411G111T-YD	00328083
	7035	Gloss	Coarse Textured	P711G715T-YD	00253095
	7046	Gloss	Coarse Textured	P711G012T-YD	00374072
	9003	Gloss	Coarse Textured	P711W016T-YD	00433877



*Available on request



Architectural Outdoors

PPG's ENVIROCRON® PCS – P4 series is a polyester architectural standard durability TGIC NIA* and lead NIA* powder coating formulated for application on aluminum extrusion and sheets, steel and galvanized steel substrates. P4 series meets the requirements of the building industry thanks to their excellent outdoor durability and mechanical properties.

Additionally, the P4 series is the selected premium standard offering for all industrial applications and is available in stock ready for quick shipping.

Product benefits

- Excellent UV fastness
- Available in a wide range of gloss finishes, and surface effects
- Qualicoat and GSB approved

Key attributes

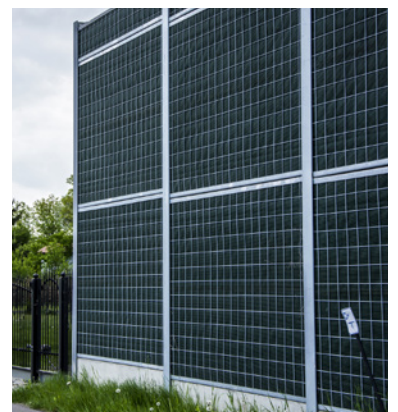
- Customer colors
- Limited environmental impact**

*Non intentionally added

**No solvent

Suggested end uses

- Urban furniture
- Steel or galvanized steel for cladding
- Aluminum profiles and sheets
- Verandas, doors, window frames, facades
- Metal and office furniture, shelving
- All other domestic and industrial appliances



Gloss product offer

Gloss (80-90 Gloss Units), Smooth

Color	RAL	Product Code	SAP Code
	1000	P411P011R-YD*	00292459
	1001	P411P064R-YD	00292460
	1002	P411Y012R-YD*	00292463
	1003	P411Y003R-YD	00292466
	1004	P411Y393R-YD	00288131
	1005	P411Y017R-YD*	00321401
	1006	P411Y015R-YD	00287900
	1007	P411Y006R-YD	00292474
	1011	P411Y000R-YD*	00292477
	1012	P411Y028R-YD*	00292478
	1013	P411P033R-YD	00288129
	1014	P411W010R-YD	00292529
	1015	P411P061R-YD	00288126
	1016	P411Y205R-YD	00292530
	1017	P411Y014R-YD*	00292532
	1018	P411Y613R-YD	00292534
	1019	P411W011R-YD	00292535
	1020	P411Y008R-YD*	00292536
	1021	P411Y217R-YD	00292537
	1023	P411Y002R-YD	00292539
	1024	P411Y001R-YD*	00292540
	1027	P411Y207R-YD*	00292543
	1028	P411Y206R-YD	00288125
	1032	P411Y010R-YD	00292544
	1033	P411Y016R-YD*	00292545
	1034	P411Y007R-YD	00292547
	2000	P411O019R-YD	00292607

Color	RAL	Product Code	SAP Code
	2001	P411O021R-YD*	00292608
	2002	P411O859R-YD	00292609
	2003	P411O026R-YD	00288124
	2004	P411O009R-YD	00292610
	2008	P411O027R-YD	00292611
	2009	P411O020R-YD	00292612
	2010	P411O025R-YD*	00297748
	2011	P411O022R-YD	00292613
	3000	P411R002R-YD	00292441
	3001	P411R016R-YD	00292615
	3002	P411R029R-YD	00288122
	3003	P411R827R-YD	00292619
	3004	P411R017R-YD	00288137
	3005	P411R000R-YD	00287827
	3007	P411R009R-YD	00292621
	3009	P411R024R-YD	00292622
	3011	P411R125R-YD	00292443
	3012	P411R018R-YD*	00292623
	3013	P411R015R-YD*	00292625
	3014	P411R019R-YD*	00292626
	3015	P411R012R-YD	00288132
	3016	P411R001R-YD	00292627
	3017	P411R026R-YD*	00318335
	3018	P411R025R-YD*	00292628
	3020	P411R136R-YD	00292629
	3022	P411R023R-YD*	00292630
	3027	P411R028R-YD	00288133

*Available on request

Gloss product offer (continued)

Gloss (80-90 Gloss Units), Smooth

Color	RAL	Product Code	SAP Code
	3028	P411R700R-YD*	00391187
	3031	P411R006R-YD*	00292631
	4002	P411R003R-YD*	00292736
	4004	P411V011R-YD*	00292737
	4005	P411V141R-YD*	00292738
	4006	P411R129R-YD*	00292739
	4007	P411V027R-YD*	00292740
	4008	P411V032R-YD*	00292741
	4010	P411V004R-YD	00292742
	5000	P411B815R-YD	00292745
	5001	P411B816R-YD	00292748
	5002	P411B817R-YD	00292751
	5003	P411B801R-YD	00288136
	5004	P411B010R-YD*	00292753
	5005	P411B802R-YD	00292759
	5007	P411B003R-YD	00292807
	5008	P411B812R-YD*	00292809
	5009	P411B819R-YD	00292811
	5010	P411B000R-YD	00292437
	5011	P411B328R-YD	00292816
	5012	P411B808R-YD	00292817
	5013	P411B826R-YD	00292819
	5014	P411B832R-YD	00292820
	5015	P411B828R-YD	00292760
	5017	P411B001R-YD	00287826
	5018	P411B834R-YD	00292823
	5019	P411B008R-YD	00292824

Color	RAL	Product Code	SAP Code
	5020	P411B846R-YD*	00292825
	5021	P411B825R-YD	00292826
	5022	P411B822R-YD	00292827
	5023	P411B009R-YD	00292828
	5024	P411B002R-YD	00287823
	6000	P411E006R-YD*	00292859
	6001	P411E017R-YD	00292860
	6002	P411E307R-YD	00287818
	6003	P411E008R-YD	00292862
	6004	P411E560R-YD*	00292863
	6005	P411E331R-YD	00292444
	6007	P411E318R-YD*	00292866
	6008	P411E015R-YD*	00292867
	6009	P411E321R-YD	00292868
	6010	P411E016R-YD	00287816
	6011	P411E336R-YD	00292761
	6012	P411E327R-YD*	00292869
	6013	P411E312R-YD*	00292870
	6014	P411E335R-YD*	00314116
	6015	P411E007R-YD*	00292871
	6016	P411E375R-YD	00292872
	6017	P411E332R-YD	00292873
	6018	P411E365R-YD	00292762
	6019	P411E310R-YD	00292874
	6020	P411E021R-YD	00292875
	6021	P411E366R-YD*	00287819
	6024	P411E000R-YD	00292876

*Available on request

Gloss (80-90 Gloss Units), Smooth

Color	RAL	Product Code	SAP Code
	6025	P411E009R-YD*	00292877
	6026	P411E014R-YD	00292878
	6027	P411E355R-YD	00292879
	6028	P411E311R-YD	00292880
	6029	P411E002R-YD	00292881
	6032	P411E362R-YD*	00292882
	6033	P411E313R-YD*	00292883
	6034	P411E013R-YD	00292884
	7000	P411G022R-YD	00292885
	7001	P411G643R-YD	00288130
	7002	P411G017R-YD*	00292887
	7003	P411G028R-YD*	00292888
	7004	P411G001R-YD	00287901
	7005	P411G649R-YD	00292889
	7006	P411G650R-YD	00292890
	7008	P411G029R-YD*	00292891
	7009	P411G030R-YD*	00292892
	7010	P411G619R-YD*	00292893
	7011	P411G005R-YD	00292763
	7012	P411G609R-YD	00287825
	7013	P411G632R-YD	00287964
	7015	P411G664R-YD	00294890
	7016	P411G012R-YD	00292433
	7021	P411G670R-YD	00292439
	7022	P411G020R-YD	00292436
	7023	P411G031R-YD*	00292894
	7024	P411G016R-YD	00288127

Color	RAL	Product Code	SAP Code
	7026	P411G032R-YD	00292895
	7030	P411G003R-YD	00288134
	7031	P411G642R-YD	00292764
	7032	P411G610R-YD	00287963
	7033	P411G023R-YD	00292897
	7034	P411G019R-YD	00292898
	7035	P411G617R-YD	00292432
	7036	P411G002R-YD	00292899
	7037	P411G004R-YD	00292765
	7038	P411G021R-YD	00294895
	7039	P411G602R-YD	00292900
	7040	P411G000R-YD	00292438
	7042	P411G626R-YD	00292901
	7043	P411G015R-YD	00292440
	7044	P411G018R-YD	00288135
	7045	P411G008R-YD	00292902
	7046	P411G009R-YD	00288123
	7047	P411G007R-YD	00292767
	8000	P411H005R-YD*	00292976
	8001	P411H525R-YD	00292977
	8002	P411H001R-YD	00292978
	8003	P411H014R-YD	00292979
	8004	P411H011R-YD	00287828
	8007	P411H550R-YD	00292769
	8008	P411H537R-YD*	00292980
	8011	P411H556R-YD	00287824
	8012	P411H015R-YD	00292981

*Available on request

Gloss product offer (continued)

Gloss (80-90 Gloss Units), Smooth

Color	RAL	Product Code	SAP Code
	8014	P411H823R-YD	00292772
	8015	P411H583R-YD*	00292982
	8016	P411H006R-YD	00292983
	8017	P411H564R-YD	00292984
	8019	P411H012R-YD	00292985
	8022	P411H004R-YD	00288128
	8023	P411H555R-YD*	00292986
	8024	P411H002R-YD	00292987
	8025	P411H008R-YD*	00292988
	8028	P411H009R-YD	00292990
	9001	P411W053R-YD	00292991
	9002	P411W020R-YD	00292992
	9003	P411W005R-YD	00292773
	9004	P411N016R-YD	00298917
	9005	P411N557R-YD	00292434
	9010	P411W006R-YD	00292774
	9011	P411N503R-YD	00311208
	9016	P411W052R-YD	00287965
	9017	P411N013R-YD	00293420
	9018	P411G006R-YD	00292775

*Available on request

Matte product offer

Trendy matte finishes

Matte finishes are currently quite popular and quickly becoming the finish of choice in modern architecture, home décor, furniture and fixtures. The matte trend is also influencing appliance styling with consumer demand growing for dark neutrals and soft, creamy hues for metallic appliances and other traditionally glossy surfaces.

As a leader in color and finishes, PPG has selected 28 of the most popular colors to create a palette of premium matte finishes for a variety of indoor and outdoor applications.

Product benefits

- High scratch resistance
- Matte, even look with a very soft finish
- Excellent hiding power to cover substrate irregularities and casting defects
- Enhanced UV resistance
- Available in small quantities



Matte (20-30 Gloss Units), Smooth

Color	RAL	Product Code	SAP Code
	1015	P453P015R-YD	00383633
	1016	P453Y016R-YD	00388090
	6003	P453E003R-YD	00387970
	6005	P453E005R-YD	00388089
	6009	P453E009R-YD	00311725
	6013	P453E013R-YD	00387971
	7001	P453G001R-YD	00299127
	7012	P453G012R-YD	00299478
	7015	P453G015R-YD	00299104
	7016	P453G016R-YD	00348117
	7021	P453G021R-YD	00299477
	7022	P453G022R-YD	00441887
	7024	P453G024R-YD	00441450
	7035	P453G035R-YD	00299097
	7037	P453G037R-YD	00441236
	7039	P453G039R-YD	00441237
	7040	P453G040R-YD	00441889
	7042	P453G042R-YD	00388172
	7044	P453G044R-YD	00441136
	8017	P453H017R-YD	00381867
	8019	P453H019R-YD	00441888
	9002	P453W002R-YD	00299102
	9003	P453W003R-YD	00319158
	9004	P453N004R-YD	00441238
	9005	P453N005R-YD	00378823
	9010	P453W010R-YD	00297177
	9011	P453N011R-YD	00441133
	9016	P453W016R-YD	00319364

Fine textured product offer

High-quality fine texture finishes

Rich colors with matte, premium finishes are trending in the architectural market. The uniformly fine texture of the coating creates a soft, matte finish and gives solid colors an elegant, sophisticated and contemporary metallic look. Twenty of the most popular hues in matte finishes are now in stock for immediate supply.

Product benefits

- High scratch resistance
- Good hiding power to cover casting defects
- Low sensitivity to product contamination in the paint line
- Good edge coverage due to high viscosity
- Excellent corrosion protection
- Easy application



Dead Matte (4-8 Gloss Units), Fine Textured

Color	RAL	Product Code	SAP Code
	1015	P474P015R-YD	00442250
	3004	P474R004R-YD	00442251
	3005	P474R005R-YD	00442388
	5010	P474B010R-YD	00442386
	6005	P474E005R-YD	00442387
	7012	P474G012R-YD	00442249
	7016	P474G016R-YD	00441693
	7021	P474G021R-YD	00441690
	7022	P474G022R-YD	00442603
	7024	P474G024R-YD	00442489
	7035	P474G035R-YD	00442490
	7039	P474G039R-YD	00442201
	8014	P474H014R-YD	00442491
	8019	P474H019R-YD	00442492
	9003	P474W003R-YD	00441794
	9004	P474N004R-YD	00442493
	9005	P474N005R-YD	00441689
	9010	P474W010R-YD	00441691
	9011	P474N011R-YD	00442202
	9016	P474W016R-YD	00441692





Metallics

PPG's ENVIROCRON® metallic products are designed to create trendy metallic finishes for modern architecture, home décor, furniture and other surfaces.

Product benefits

- Selection of popular colors
- Colors available in gloss, matte and fine texture

Key attributes

- Customer colors
- Limited environmental impact*

Suggested end uses

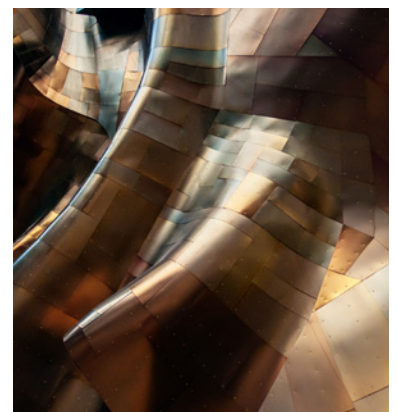
Extrusion market

Urban furniture, verandas, doors, window frames and facades

Metal and office furniture

Lightning

Appliances



*No solvent

Industrial metallic product offer

Color	Color	Gloss	Finish	Chemistry	Product Code	SAP Code
	INOX	Gloss	Smooth	Epoxy Polyester	P821I602B-YD	00437591
	IKEA SILVER 4*	Gloss	Smooth	Epoxy Polyester	P851G1002A-YD (102478)** ¹	00453104
	RAL 9006*	Gloss	Smooth	Polyester Architectural	P411I000R-YD	00292442
	RAL 9007*	Gloss	Smooth	Polyester Architectural	P411I002R-YD	00317991
	BMW ALUMINIUMSILVER	Gloss	Smooth	Polyester Urethane	P351G1003B-YD (116972)** ¹	00453111
	BMW BLUE	Gloss	Smooth	Polyester Urethane	P351B1004B-YD (121537)** ¹	00453112
	RAL 9006	Semi Gloss	Smooth	Epoxy Polyester	P812I203B-YD	00424539
	RAL 9007	Semi Gloss	Smooth	Epoxy Polyester	P812I006B-YD	00183833
	RAL 9006	Semi Gloss	Smooth	Polyester Industrial	P712I704B-YC	00316546
	AZURITE 3	Matte	Smooth	Epoxy Polyester	P813D003B-YD	00421452
	DB 702*	Matte	Smooth	Polyester Architectural	P413I702M-YD	00437426
	DB 703*	Matte	Smooth	Polyester Architectural	P413I002M-YD	00369519
	QUARZO 1*	Matte	Fine Textured	Epoxy Polyester	P822J000F-YD	00421444
	RAL 9007*	Matte	Fine Textured	Polyester Industrial	P412I543F-YD	00437400
	DB 702*	Matte	Fine Textured	Polyester Industrial	P412I417F-YD	00437436
	DB 703*	Matte	Fine Textured	Polyester Industrial	P412I419F-YD	00439541

*Dry-blend

**Available on request

¹ Only available within the EU



Specialties

Specialties for Anti-Graffiti

PPG's ENVIROCRON® special anti-graffiti products include polyurethane as well as hybrid powder coatings. The product covers a wide range of usages with special needs for an outstanding chemical resistance.

Product benefits

- Excellent anti-graffiti properties
- Very good resistance to a wide range of chemicals
- Good hot grease resistance
- Good resistance against textile lubricants and finishing agents

Suggested end uses

Rail interior decoration

Mechanical engineering

Appliances, e.g. washing machines, ovens

Applications with need for highly chemical resistant surfaces

Color	Color	Gloss	Finish	Chemistry	Product Code	SAP Code
	RAL 7035	Semi Gloss	Smooth	Polyester Urethane	P312G035R-YD	00320152
	RAL 7035	Semi Gloss	Coarse Textured	Polyester Urethane	P312G135T-YD	00317348

ENVIROCRON® P8 series also includes a complete hybrid powder coating series, designed for anti-graffiti applications. The W824 series is approved by Deutsche Bahn based on test standard DBS 918 340.**

*No solvent

**Available on request

Electrical cabinet and fence product offer

Specialties for electrical cabinet

PPG's ENVIROCRON® portfolio includes special durable products that protect electrical cabinets, transformers, switchgear and enclosures.



Product benefits

- Excellent edge coverage
- Powder coatings with high transfer efficiency and optimized consumption

Color	Color	Gloss	Finish	Chemistry	Product Code	SAP Code
	RAL 7035	Gloss	Smooth	Epoxy Polyester	P811G817R-YD	00272928
	RAL 7035	Matte	Smooth	Epoxy Polyester	P813G025R-YD	00233578
	RAL 7035	Gloss	Coarse Textured	Polyester Industrial	P411G111T-YD	00328083
	RAL 7035	Gloss	Coarse Textured	Polyester Industrial	P711G715T-YD	00253095

Specialties for fence

PPG's ENVIROCRON® portfolio includes a special series of selected products optimized to cover and protect fences.



Product benefits

- Good edge coverage
- Good welding coverage
- Good UV resistance
- High transfer efficiency

Color	Color	Gloss	Finish	Chemistry	Product Code	SAP Code
	RAL 6005	Gloss	Smooth	Polyester Industrial	P411E800R-YD	00347301
	RAL 7016	Semi Gloss	Smooth	Polyester Industrial	P712G600R-YD	00358858
	RAL 9005	Semi Gloss	Smooth	Polyester Industrial	P712N005R-YD	00320215



Clearcoats

PPG's ENVIROCRON® range of powder clearcoats includes a polyester industrial PCS series as well as a PCA series formulated to protect your products against UV aggression, scratch and chemicals.

Product benefits

- Enhanced transparency
- Exterior ultra durability
- Superior flow and optical appearance
- Very good leveling even at low film thickness
- Chemical resistance
- Soft Touch
- Excellent colorfastness of bicycle decals

Key attributes

- Limited environmental impact*

*No solvent

Suggested end uses

Bicycles

Automotive parts and accessories

Industrial outdoor application, e.g. baffle boards, terrace and garden furniture

Facade elements, e.g. plates, profiles and casings

Lighting equipment and construction

Domestic and industrial appliances



Clearcoat product offer

PPG Product Line	PPG ENVIROCRON® PCS - P4 Series P411C115R-YP (SAP code: 00313810)	PPG ENVIROCRON® PCA - PO Series P013C900R-YC (SAP code: 00315897)
Chemistry	<ul style="list-style-type: none"> • Polyester 	<ul style="list-style-type: none"> • Polyester Acrylic
Features	<ul style="list-style-type: none"> • Gloss • Very good flow • Good weathering resistance (colorfastness and gloss retention) 	<ul style="list-style-type: none"> • Dead matte • Very good flow and edge coverage • Good weathering resistance (colorfastness and gloss retention) • Good mechanical properties • Chemical resistance
Benefits	<ul style="list-style-type: none"> • Durable and uniform finish • Enhanced film appearance • Long-term surface protection 	<ul style="list-style-type: none"> • Durable and uniform finish • Enhanced film appearance • Long-term surface protection

PERFORMANCE	UV Durability	★★	★★
	Mechanical properties	★★★	★
	Optical appearance	★	★★
	Curing conditions	12 min / 180°C	15 min / 195°C



PPG ENVIROCRON® PCA - PO Series P013C910R-YC* ¹ (SAP code: 00351409)	PPG ENVIROCRON® PCA - PO Series P054C1001R-YC* ¹ (SAP code: 00453124)	PPG ENVIROCRON® PCA - PO Series P011C900R-YC* ¹ (SAP code: 00351408)
<ul style="list-style-type: none"> • Polyester Acrylic 	<ul style="list-style-type: none"> • Polyester Acrylic 	<ul style="list-style-type: none"> • Acrylic
<ul style="list-style-type: none"> • Dead matte • Excellent flow • Very good weathering resistance (colorfastness and gloss retention) • Good chemical resistance 	<ul style="list-style-type: none"> • Dead matte • Excellent flow • Exterior durability • Good chemical resistance 	<ul style="list-style-type: none"> • High gloss • Excellent flow • Excellent weathering resistance (colorfastness and gloss retention) • Very good chemical resistance
<ul style="list-style-type: none"> • Ultra durable and uniform finish • Excellent film appearance • Long-term surface protection, especially against weathering and chemicals 	<ul style="list-style-type: none"> • Ultra durable and uniform finish • Excellent film appearance • Long-term surface protection, especially against weathering and chemicals 	<ul style="list-style-type: none"> • Ultra durable and uniform finish • Excellent film appearance • High brilliance • Long-term surface protection, especially against weathering and chemicals

★★★	★★★	★★★★
★	★	★★
★★★	★★	★★★★
15 min / 150°C	15 min / 150°C	15 min / 140°C



*Available on request

¹ Only available within the EU



PPG: WE PROTECT AND BEAUTIFY THE WORLD®



A trusted global coatings leader

Operations in 70+ countries, with 100+ manufacturing facilities and 47,000 employees



Renowned color expertise

Trend-setting palettes for home, auto and industry paired with unrivaled color matching



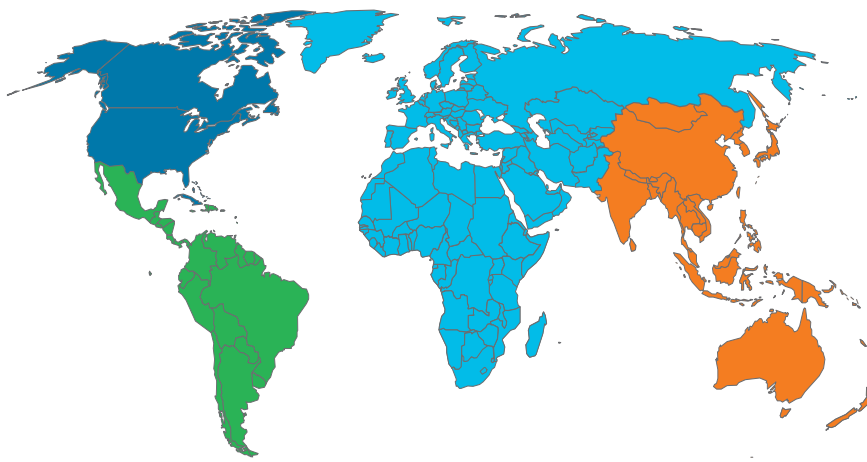
Commitment to sustainability

Over 35% of annual sales from sustainably advantaged products and processes



Dedication to innovation

3,500+ technical employees and \$464 MM average annual R&D investment



Industrial coatings from PPG

- World-class technical services and training
- Help meeting specific, coatings-related environmental mandates
- Assistance setting up new equipment and identifying areas where your processes may be streamlined
- Troubleshooting production issues
- SECURE LAUNCH EXCELLENCE® accelerated custom product formulation and color development process

To learn more about PPG coatings, please visit us online at ppgindustrialcoatings.com, or contact one of the international sales offices listed below.

PPG Regional Headquarters

■ PPG Global Headquarters / PPG North America
Pittsburgh, PA USA
1.888.774.2001
ic-na@ppg.com

■ PPG Latin America
Sumare, Sao Paulo, Brazil
+ 55.19.3864.6000
ic-latam@ppg.com

■ PPG Europe, Middle East and Africa
Rolle, Switzerland
+ 41.21.822.3000
ic-emea@ppg.com

■ PPG Asia Pacific
Hong Kong, China
+ 852.2860.4500
ic-ap@ppg.com

■ PPG China HQ
Shanghai, China
+86 21 60918500
ic-cn@ppg.com

The technical data presented in this document is based upon information believed by PPG to be currently accurate. However, no guarantees of accuracy, comprehensiveness or performance are given or implied. Continuous improvements in coatings technology may cause future technical data to vary from what is presented in this document. Contact your PPG representative for the most up-to-date information.

The PPG Logo, Envirocron, Secure Launch Excellence and We protect and beautify the world are registered trademarks of PPG Industries Ohio, Inc. The IN Logo is a registered trademark of LinkedIn Corporation. ©2022 PPG Industries, Inc. All rights reserved. 04/22 IC162

