

Lumen

A Sonepar Company

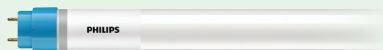
ONTARIO

Special deals
March - April
2021



Valid for Electrical Contractors
ECAO and OEL members only

PHILIPS



T8 Linear LED Tube

48 in - 12.5W, 120/277V, frosted lens,
240° beam, hybrid/dual mode
(type A or B installation).

Replaces 32W, fluorescent

3500K, 1700LM

PHI125T8COR48835FF18G

4000K, 1800LM

PHI125T8COR48840FF18G

5000K, 1800LM

PHI125T8COR48850FF18G

LITHONIA
LIGHTING



High Bay LED Fixture

120/277V, 4000K, dimmable 0-10V, 6 ft cord, hook,
clear glass lens, 120° beam, white housing.

Replaces 4 x 54W, T5HO or 6 x 32W, T8

12000LM # LITJEBL12L40K80CRIWH

Replaces up to 400W, HID or 6 fluorescents, T5HO

18000LM # LITJEBL18L40K80CRIWH

Replaces up to 400W, HID or 8 fluorescents, T5HO

24000LM # LITJEBL24L40K80CRIWH

Replaces up to 575W, HID or 10 fluorescents, T5HO

30000LM # LITJEBL30L40K80CRIWH

STANPRO

NEW!



LED Panel for Suspended Ceiling

120/347V, 3500/4000/5000K, dimmable 0/10V.

1x4 - 20/30/40W

STAL3PNB1LPSQ3C

2x2 - 20/30/40W

STAL3PNB2LPSQ3C

2x4 - 30/40/50W

STAL3PNB4LPSQ3C

MARRETTE® PRO-BLU™

Did you say
FREE?



9333AR

933BK

933BAR

From March 1 to May 31, 2021

Receive a gift card when you buy a barrel,
flip-pak or specially marked jar of our ergonomic
PRO-BLU 933 wire connectors.

Offer valid while supplies last.

Complete details at marrette.com/gift.



ABB



LED Surface Fixture

4 ft - 48W, 120/277V, 4000K, 4600LM, dimmable, white acrylic lens.

Replaces 2 x 32W, T8

LITFMLWL48840ZTMVOLT



NEW!

LED Striplight

120V, 3500K, white, interconnectable up to 18 units, coupler and 18" cord included, 5 ft cord with plug, toggle switch, polycarbonate lens.

23 in - 9W, 940LM

LITRLNKL2412035K80CRI

47 in - 20W, 1950LM

LITRLNKL4812035K80CRI



LED Striplight

120/277V, 3500/4000/5000K, frosted acrylic lens.

48 in - 3000/4000/5000LM

LITCSSL48ALO3MVSWW380CRI

96 in - 6000/8000/10000LM

LITCSSL96ALO4MVSWW380CRI



NEW!

LED Surface Fixture

4 ft - 50W, 120/277V, 4000/5000/6000LM, frosted polycarbonate lens, dimmable 0/10V.

3500K

LITFML4W48ALO6SEF835MV

4000K

LITFML4W48ALO6SEF840MV



With specular reflector

Fluorescent High Bay Fixture

120/277V, with 6 ft flexible cord (lamps not included).

13 - 1/4" wide, 4 x F54T5HO

LITIBZT5454MVCS93W

18 - 1/8" wide, 6 x F54T5HO

LITIBZT5654MVCS93W



Recessed Fluorescent T-Bar Fixture

120V/277V (lamps not included)

1 x 4 ft

2 x F32T8 # LIT1GT2MV

2 x 4 ft

3 x F32T8 # LITGT3MV

4 x F32T8 # LITGT4MV



LED Wall Pack

36W, 120/277V, 4000K, 4700LM, gray finish, photocell included, acrylic lens.

Replaces up to 100W, mercury vapor

LITBGRLEDP140KMVPERDNA



LED Watertight Surface Fixture

120/277V, 6 ft white cord, frosted acrylic diffuser, medium distribution, dimmable.

2 ft - 15000LM, IP66

Replaces 4 x 54W, T5HO or 6 x 32W, T8

4000K # LITFHEL2415LMFSTMDMVGZ4K

5000K # LITFHEL2415LMFSTMDMVGZ5K

4 ft - 18000LM, IP67

Replaces 4 x 54W, T5HO or 6 x 32W, T8 or 400W, HID

4000K # LITFHEL4818LMFSTMDMVGZ4K

5000K # LITFHEL4818LMFSTMDMVGZ5K



NEW!

LED High Bay Fixture

120/277V, medium distribution, 6 ft cord, dimmable 0/10V, anti-glare lens, V hook and 36" chain included.

14 in x 11.5 in - 18000LM

4000K # LITCPHB18LMSEFGCLMDMV4K

5000K # LITCPHB18LMSEFGCLMDMV5K

22.5 in x 11.5 in - 24000LM

4000K # LITCPHB24LMSEFGCLMDMV4K

5000K # LITCPHB24LMSEFGCLMDMV5K

22.5 in x 11.5 in - 30000LM

4000K # LITCPHB30LMSEFGCLMDMV4K

5000K # LITCPHB30LMSEFGCLMDMV5K

Suitable for wet location



LED Recessed Fixture

4 in - 8W, 120V, matte white, dimmable.

Replaces up to 65W, incandescent

3000K, 580LM

LITWF4ELED30K90CRIMWCP6

4000K, 600LM

LITWF4ELED40K90CRIMWCP6



NEW!

LED Commercial Recessed Fixture

120/277V, 3000/3500/4000/5000K, semi-specular clear reflector, medium wide distribution, dimmable 0/10V and 120V.

4 in - 500/750/1000LM

LITLBR4ALO1SWW1ARLSSMWD

6 in - 1000/1500/2000LM

LITLBR6ALO2SWW1ARLSSMWD

8 in - 2000/2500/3000LM

LITLBR8ALO3SWW1ARLSSMWD



LED Projector

120/277V, 4000K, yoke mount, bronze.

54W, 7200LM - Replaces up to 150W, MH

LITTFX1LED40KMVYKDBDXD

94W, 12700LM - Replaces up to 250W, MH

LITTFX2LED40KMVYKDBDXD

188W, 25600LM. Replaces up to 400W, MH

LITTFX3LED40KMVYKDBDXD

296W, 41000LM. Replaces up to 1000W, MH

LITTFX4LED40KMVYKDBDXD

KEENE

by @ignify

**LED Wall Pack**

20W, 120/277V, 4 000K, 2 277LM, bronze.

Replaces 70W, HID

KEETW20NWG18BZ

With photocell

KEETW20NWG1PCB1BZ

KEENE

by @ignify

**LED Wall Pack**

13W, 120V, 3 000K, 1 200LM, photocell included, bronze finish, wall mount with galvanized mounting plate, frosted polycarbonate lens.

Replaces up to 70W, MH

KEESWLWWG1PCB1BZ

KEENE

by @ignify

**LED Wall Pack**

12W, 120V, 3 000K, 1 100LM, photocell included, bronze finish, wall mount with galvanized mounting plate, frosted polycarbonate lens.

Replaces up to 70W, MH

KEELWLWWG2PCB1BZ

KEENE

by @ignify

**LED Projector**

120/277V, 4 000K, bronze, yoke mount.

50W, 5 500LM

Replaces 150W, HID

KEETF50NWG1KFL8BZ

100W, 12 400LM

Replaces up to 400W, MH

KEETF100NWG1YFL8BZ

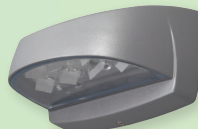
150W, 18 600LM

Replaces up to 400W, MH

KEETF150NWG1YFL8BZ

KEENE

by @ignify

**LED Wall Pack**

120/277V, 4 000K, titanium finish.

10W, 1 050LM

Replaces up to 50W, HID

KEELPW7G38DGY

30W, 3 364LM

Replaces up to 150W, HID

KEELPW16G38DGY

71W, 5 700LM

Replaces up to 320W, HID

KEELPW32G38DGY

KEENE

by @ignify

**LED Wall Pack**

120/277V (also available in 347V), 4 000K, slim profile, bronze.

15W, 1 674LM

Replaces up to 70W, HID

KEEPW15NWG18BZ

30W, 3 228LM

Replaces up to 150W, HID

KEEPW30NWG18BZ

50W, 5 003LM

Replaces up to 175W, HID

KEEPW50NWG18BZ

PHILIPS

Pack of 3

LED Lamps

PAR20 - 6W, 3 000K, 500LM

Dimmable, 35° beam.

Replaces 50W, halogen

PHI6WLEDPAR20SO3K35D3PK

LIGHTOLIER

by @ignify

**LED Recessed Fixture**

3 in - 8W, 120V, 3 000K, 550LM, gimbal, narrow beam, junction box included.

Replaces 50W, halogen

Matte white

LIGMG3R06930NF1W

Matte black

LIGMG3R06930NF1B

Brushed nickel

LIGMG3R06930NF1N

LIGHTOLIER

by @ignify

**LED Recessed Fixture**

3 in - 8W, 120V, 3 000K, 550LM, white

Regressed, large beam, junction box included.

Replaces 50W, halogen

LIGMD3R069301FW

PHILIPS**LED PL-S Lamp**

5W, 120/277V, 560LM, GX23 base, 2 pins, frosted lens, 120° beam.

Replaces 13W, compact fluorescent

3 500K

PHI5PLSLED13H835IF5P2P

4 000K

PHI5PLSLED13H840IF5P2P

LED Wall Pack

120/277V, 3 000K, dimmable driver 0-10V, type 2 distribution, gray finish, 10 year limited warranty. Wall mounting post and photocell included.

72W, 8 100LM - *Replaces 150W, HPS*

LUMKITSSENTINELLE72W

80W, 10 400LM - *Replaces 200W, HPS*

LUMKITSSENTINELLE80W2

135W, 17 655LM - *Replaces 400W, HPS*

LUMKITSSENTINELLE135W2





LED Mini Portable Projector

10W, 100/240V, 450LM, 120° beam, lithium-ion 3.7V 2AH battery working time is 2 hours (100%) or 4 hours (energy saving mode), 2 intensity switch, flashing switch, magnetic handle, black housing.

STAMFLBTRYMG10024010WCW

NEW!



LED Wall Pack

120/277V, frosted polycarbonate lens, photocell included, bronze finish. **Replaces up to 70W, HID**

15W, 1 725LM, 3 000K
STAWCILS1W30KBR

20W, 4 000K (2 522LM) / 4 500K (2 926LM) / 5 000K (2 637LM)
STAWCILS2W3CBR



NEW!

LED Wall Pack

120/347V, 3 000/4 000/5 000K, bronze finish, photocell included, prismatic glass lens, dimmable 0/10V.

25/30/40W # STAWSPSPS40Q3C

60/80/100W # STAWSPSPS100Q3C

120W # STAWPSNS120Q3C



Under-Cabinet DEL Puck Lights

4W, 120V, 3 000K, 200LM, 120° beam, dimmable, frosted lens, 120V cord included.

Recessed or surface mount installation.

White

LUMLUUCPKIT3120V4W3KFRWH

Brushed nickel

LUMLUUCPKIT3120V4W3KFRBN



Under-Cabinet DEL Puck Lights

2.2W, 12V, 3 000K, 150LM, 120° beam, dimmable, frosted lens, recessed or surface mount installation, plug-in transformer (12W, 12V) included.

White

LUMLUUCPKIT312V22W3KFRWH

Brushed nickel

LUMLUUCPKIT312V22W3KFRBN

Black

LUMLUUCPKIT312V22W3KFRBK



Under-Cabinet LED Fixture

120V, 2 700/3 000/4 000K, 120° beam, dimmable, frosted lens, pivoting light source.

12 in - 5W, 330LM

LUMLUUCS12IN120V5WSELFR

18 in - 8W, 530LM

LUMLUUCS18IN120V8WSELFR

24 in - 12W, 800LM

LUMLUUCS24IN120V12WSELFR

32 in - 16W, 1 060LM

LUMLUUCS32IN120V16WSELFR



LED EDGELIT Surface Fixture

120V, 3 000K, white border.

6 in - 11W, 855LM

STAEDCL6EDG11W3KFMRNDWH

8 in - 14W, 1 066LM

STAEDCL8EDG14W3KFMRNDWH



NEW!

LED Surface Fixture

4 ft - 3 500/4 000/5 000K, dimmable 0/10V, IP66, NSF, NEMA 4X, polycarbonate lens, stainless steel clips, V hook included.

42W, 120/347V, 5 450LM

STAVTL4LS3Q3C

42W, 120/277V, 5 450LM

STAVTL4LS3W3C

65W, 120/347V, 8 550LM

STAVTL4LS4Q3C

65W, 120/277V, 8 560LM

STAVTL4LS4W3C



LED Surface Fixture

120V, 3 000K, dimmable, round.

12 in - 20W, 1 458LM

Black

LUMLUCLDR12S220W30KRNDKBK

Brushed nickel

LUMLUCLDR12S220W30KRNDNB

16 in - 26W, 1 923LM

Black

LUMLUCLDR16S226W30KRNDKBK

Brushed nickel

LUMLUCLDR16S226W30KRNDNB



LED Fixture with Motion Sensor

2 X 12W, 120V. **Replaces 50W, MH or 70W, HPS**

3 000K, 2 242LM

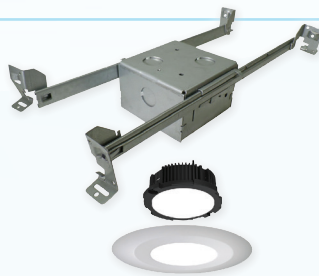
Bronze # STAESLLS1A30KBR

White # STAESLLS1A30KWH

4 000K, 2 490LM

Bronze # STAESLLS1A40KBR

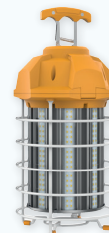
White # STAESLLS1A40KWH



Recessed LED Fixture

6 in - 11.8W, 120V, 3 000K, 750LM, White, dimmable, **sound and fire rated**, airtight and IC rated junction box.

STAKFLXLED118W30K6TRMWHJ



Temporary LED Fixture

150W, 120V, 15 000LM, 360° beam, 18 AWG/3C wire, remote control included.

STATHBDSC150WCWINDORSTD



Wireless Wall Mount Phone Charger

7.5W, 125V, white.

HUBUSB1518



Wireless Wall Mount Phone + USB charger.

USB type A & C, 5A 5V, 10 000 cycles.
Receptacle 15A, 125V, tamper-resistant.

15A # HUBUSB1528AC
20A # HUBUSB2028AC



Transparent Cover

2-3/4" deep,
horizontal / vertical.

HUBMM420CCN



Expandable Cover

1G, horizontal / vertical, extra duty.

Gray # HUBML500GCN
White # HUBML500WCN
Bronze # HUBML500ZCN



Motor Disconnects

NEMA 4X, 12, commercial grade.

30A, 7.5HP
HUBMD30
60A, 20HP
HUBMD60

Duplex Receptacle

Decorator Commercial Series



15A, 125V, USB A & C ports,
10 000 cycles, white.
HUBUSB15AC5W



20A, 125V, USB A & C ports,
10 000 cycles, white.
HUBUSB20AC5W



15A, 125V, USB 5A ports,
10 000 cycles.

White # HUBUSB15A5W
Black # HUBUSB15A5BK



20A, 125V, USB 5A ports,
10 000 cycles.

White # HUBUSB20A5W
Black # HUBUSB20A5BK

EMERGI-LITE



LED Plastic Pictogram Exit Sign

4.2W

EMECMPSACE
LUMCMPSACL



LED Plastic Pictogram Exit Combo Unit

2 x 1W

EMECMPCE
LUMCMPCL



Emergency LED Lighting

6-12V

Single - 1 X 3W
EMEEF9BLDC
LUMMP1BLDC

Double - 2 X 3W
EMEEF9DBLDC
LUMMP2BLDC



Emergency LED Lighting Fixture Battery Unit

6V, 27W, 2 x 4W

EME06JMLC272BLDC
LUMRGC272BLDC

LUMACELL

Appleton



Powertite Connector

30A, 4P, 3W
APPACP3034BC

60A, 4P, 3W
APPACP6034BC



Receptacle

30A, 4P, 3W
APPADR3034

60A, 4P, 3W
APPADR6034



Reducing Bushing

Threaded, steel.

3/4 x 1/2 in # APPRB7550
1 x 3/4 in # APPRB10075
1-1/4 x 1 in # APPRB125100
1-1/2 x 1 in # APPRB150100

Decora Duplex Receptacle



15A, 125V, white
LEVTDR15W



20A, 125V, white
LEVTDR20W

Toggle Switch



1P, 15A, 120V, white
LEV56912W



3-way, 15A, 120V, white
LEV56932W



1P, 15A, 347V, white
LEV5691CW



3-way, 15A, 347V, white
LEV5693CW

Duplex Receptacle



15A, 125V,
isolated ground
LEV5262SIG



15A, 125V
LEVCR15W



20A, 125V
LEVCR20W

Toggle Switch



1P, 15A, 120/277V
LEVCS1152W

3-way, 15A, 120/277V
LEVCS3152W



1P, 15A, 347V
LEV18201CW

3-way, 15A, 347V
LEV18203CW

Miniature Fuse, 600V



10A # FERATM10
15A # FERATM15
20A # FERATM20
25A # FERATM25
30A # FERATM30



Class CC Fuse, 600V

10A # FERATDR10
15A # FERATDR15
20A # FERATDR20
30A # FERATDR30

Type D Fuse, 250V



15A # FERCRN15
20A # FERCRN20
30A # FERCRN30
60A # FERCRN60



100A # FERCRN100
200A # FERCRN200
400A # FERCRN400

Fish Tape

Laser etched in 12" increments.



S-Class®

100 ft x 3/16 in.

Non-conductive Fiberglass with durable Tuff-Grip™ Pro case.

IDE31063



Blued-Steel™

120 ft x 1/8 in.

With durable Tuff-Grip™ Pro case for superior pull-out and rewind.

IDE31056



Blued-Steel™

100 ft x 1/8 in.

IDE31036



Gas Grills

Beauty, performance and durability just got bigger.



Rogue XT 525 SIB Series

Propane 57 000 BTU max, infrared side burner, 18" x 28-3/4" cooking surface, black.

NAPRXT525SIBPK1



Rogue XT 525 SIB Series

Propane 57 000 BTU max, infrared side burner, 18" x 28-3/4" cooking surface, stainless steel.

NAPRXT525SIBPSS1



Rogue 525 Series Grill Cover

NAP61527



Rogue XT 625 SIB Series

Propane 69 000 BTU max, infrared side burner, 935 in² cooking area, black.

NAPRXT625SIBPK1



Serie Rogue 625 Grill Cover

NAP61627



Compact Central Vacuum Unit

Disposable 22.7L bag system for 4 000 ft² house. 120V, 12A, 70dB, 550 air watts, 29-3/4" height.

BROBQ550



Deluxe Accessories Kit

Includes: 30 ft low voltage hose, 3 brushes, 2 nozzles, telescopic wand, 2 mounting brackets and a storage bag.

BROBNAK2

Flex DC™ Fan

50-80-110 CFM



BROAE50110DC

With humidity sensor
BROAE50110DCS



With LED light

BROAE50110DCL

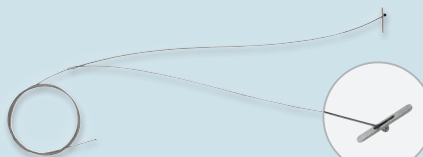


Starter Kit

Including cable length counter.

1/16 in - KL75 for cable WC2
RIZ30398/KL75SK

3/32 in - KL100 for cable WC3
RIZ30394/KL100SK



Enlarged view

Y Toggle Kit

Two 10 ft cables and two KL 75 cable locks (Kwik-Loc). Designed to hang fluorescents and other lighting products.

RIZ30202/RWC2YP10K



WC2 Cable

Aviation cable roll, 1/16" diameter, galvanized steel, 7x7 construction.

500 ft # RIZ30380/RWC2

CoRe+™

208 V or 240 V | 30A | 7,2 kW

Smart level 2 charging station for multi-unit residential buildings, commercial and industrial applications.

- NEMA 4X aluminum casing
- Certified to operate at temperatures ranging from -40 °C to 50 °C
- Wall-mounted or pedestal configuration
- Optional cable management system
- User authentication via RFID card or mobile application

Applications



Multi-unit residential buildings



Workplace



Fleet



Heavy-duty aluminum casing



Safe



Made in Canada



Certified



1-Year Limited Warranty

flo.com



Cable Management System

Can be installed on pedestal or wall mount.

FLOCMF1GRRV



Pedestal for CoRe+ Charging Station

Designed for one or two stations.

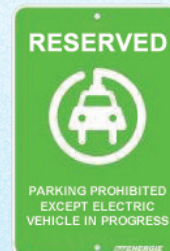
FLOCV1PEDRVGRRV



Replacement Cable / Connector Assembly

25 ft of cable and gun.

FLOACCC1000A2



Parking Sign

"PARKING PROHIBITED EXCEPT ELECTRIC VEHICLE IN PROGRESS".

FLOSIGNRESEGENEN



Pedestal for Flo Home G5 and X5 Charging Stations

RABPIEDESTALBORNEFLO



Power Outlets - NEMA 3R

Perfect outdoor connection solution for electric vehicle charging stations.



30A, receptacle R32U
MIDU013



50A, receptacle 14-50R
MIDU054



50A, receptacle 6-50R
MIDU501



 Dimplex

1500W DIMDIR15AGR
1800W DIMDIR18AGR
2200W DIMDIR22AGR
3000W DIMDIR30AGR

Warmer. Quicker.

The DIR patio heaters are now available in 3000W.

Weatherproof (IP65 rating), it operates in temperatures as low as -40°C.
Get your customers warm and cozy evenings on the terraces!

CONVECTAIR

Innovations.
Differences.
Performances.

1 800 463-7043 | www.convectair.ca



THE HEATED FLOORS **SPECIALIST**

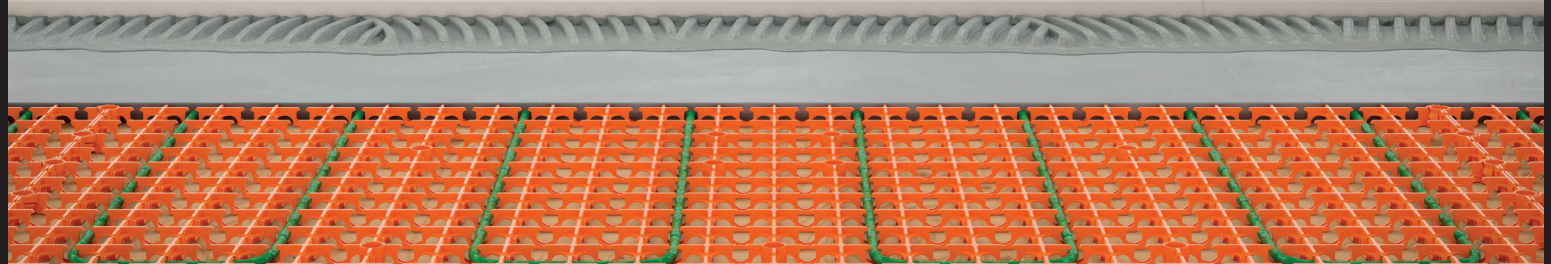
With the purchase of a FLEXTHERM
heating cable and thermostat

RECEIVE A FREE
FLEXSNAP*

FLEKITGS240K...



Proudly Canadian



* Includes one GS cable, one FLK50 thermostat and the sq. ft.
amount of FLEXSNAP required to cover the cable covering.

1-800-353-9843 | client@flextherm.com

ONTARIO - Effective from March 1st to April 30th 2021



 lumen

9



PRIMA™

HIGH-END COMPACT BASEBOARD

STESPR0502W 500 W
STESPR1002W 1000 W
STESPR1502W 1500 W
STESPR2002W 2000 W



ELECTRONIC THERMOSTAT FOR BASEBOARD

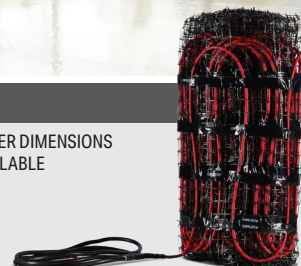
STESIBTE12C



HEATING CABLE ON LATTICE FOR CONCRETE

STESECM2W0300S025
STESECM2W0400S033
STESECM2W0500S042
STESECM2W0600S050
STESECM2W0750S063
STESECM2W0850S071

OTHER DIMENSIONS
AVAILABLE



ELECTRONIC THERMOSTATS FOR HEATING FLOORS



Non-programmable
STESTCNPW5

Programmable
STESTCPW5



BRAVA BLACK

CLASSIC AND TRENDY!

DARE TO CREATE AN INTERESTING VISUAL EFFECT
BY ENHANCING THE LOOK OF YOUR PARTS WITH ELEGANCE!

**OUR BLACK BRAVA BASEBOARD
IS NOW AVAILABLE AT LUMEN**

STEB0502BK 500 W
STEB0752BK 750 W
STEB1002BK 1 000 W
STEB1252BK 1 250 W
STEB1502BK 1 500 W



1-844-STELPRO | WWW.STELPRO.COM



IP SURVEILLANCE KIT



+



- 4 x 2MP dome cameras (HONHED2PER3)
- 1 x 4-channel 2TB NVR (HONHEN04113)

HONHEN04113EBKT

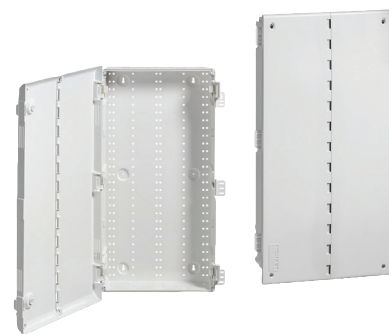


+



- 6 x 4MP dome cameras (HONH4W4PER3)
- 1 x 8-channel 2TB NVR (HONHEN08123)

HONHEN081236DKT



Structured Wireless Media Enclosure

28 in - Plastic, white

Vented hinged door

LEV4960528P

Vented cover

LEV4960528W



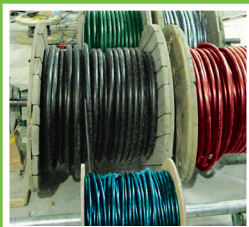
Plug Cat6A

Shielded Cat6A plug and tool-free installation.

LEV6APLGS6A

THE SOLUTION for your reel problems!

BEFORE



TWISTED assemblies RW90 NUAL® FEEDERPLEX

- Reduces quantity of reels required on construction sites by 3 to 5 times
- Ideal for existing buildings
- Reduces the pulling force by 50%
- Faster and cleaner (no lubricant required)
- Improves tension drop
- 24 to 48 hour delivery



AFTER



MOTOROLA

CAT Waterproof-Dustproof Rugged Smartphone with Integrated FLIR thermal imagery camera



WASHABLE: waterproof up to 5m for 60 minutes. Drop proof up to 1.8m strengthened die cast frame. Screen: 4.7" Corning® Gorilla® Glass 4. Battery: 3800mAh, 1year warranty.

MOTCATS60

WASHABLE: waterproof up to 3m for 60 minutes. Drop proof up to 1.8m. Air Quality Sensor and Laser measurement. Screen: 5.2" Corning® Gorilla® Glass 5. Battery: 4500 mAh, 2 years warranty.

MOTCATS61



© 2020 Caterpillar. All Rights Reserved. CAT, CATERPILLAR, BUILT FOR IT, their respective logos, "Caterpillar Yellow", the "Power Edge" trade dress as well as corporate and product identity used herein, are trademarks of Caterpillar and may not be used without permission. Bullitt Mobile Ltd is a licensee of Caterpillar Inc. All other trademarks, trade names, product names and logos are the property of their respective owners. Any rights not expressly granted herein are reserved.

FLUKE



Non-Contact VoltAlert™ Tester

Detects from 90 to 1000 VAC, pocket size.

FLU2AC/901000V



Infrared Thermometer 62 MAX

Large backlit display, supports heat, dust, water and a 3m drop. Accuracy of $\pm 1.5^{\circ}\text{C}$.

FLU62MAX



True-RMS Digital Multimeter

Cat III, 600V safety rated, 10A AC/DC current measurement (20A overload for 30-seconds max.), LED backlight, min/max/average to record signal fluctuations, measures resistance, continuity, frequency and capacitance.

FLU115EFSP



323 True RMS Clamp Meter

Features a CAT III 600V, CAT IV 300V safety rating. 400A-600V AC/DC.

FLU323



T5-600 Electrical Tester

Measure current up to 100A without breaking the circuit with OpenJaw™ design.

FLUT5600



TwistGuard™ Test Leads

CAT II 1000V, CAT III 1000V, CAT IV 600V, 10A max.

FLUTL175



Chest Box for Storage

30 x 48 x 30 in (capacity of 25 ft³)

With tray
GRE3048

Without tray
GRE3048X



Castors for Chest Box

4 in - Kit of 4: 2 rigid, 2 swivel (capacity of 1 600 lb)

GRE696



Storage Rack for Conduit and Pipes

7 individual bins allow you to sort by size and type. Heavy duty 6" casters included.

GRE668

IMPORTANT !

Two reel jackstands are required to complete the installation.



Reel Jackstand

Capacity 2 500 lb, maximum height 54", minimum height 22", maximum reel diameter 96", minimum reel diameter 46", for use with GLE647.

GRE683



Bushing for Metal Stud Punches

For pre-punched hole or 1-11/32" diameter hole punched by 710.

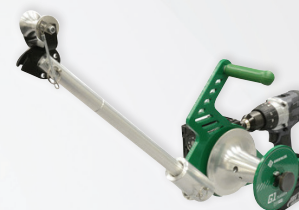
Bag of 100 # GRE712A100
Bag of 1 000 # GRE712A1000



Nylon Cable Protector

3 to 6 in - Fits in the end of conduit to shield the cable from sharp edges as it is being fed through.

GRE4883



Versi-Tugger™ Cable Puller

Handheld 1 000 lb puller. Universal, one-size-fits-all pulling head attaches quickly to any size conduit from 1/2" to 4". Works with most 18V-20V cordless drills (not included).

GREG1



Katapult® Wire Stripper / Cutter

Cuts and strips 8-22 AWG wire with ease.

KLE11063W



Diagonal Cutting Pliers

8 in - Angled head, short jaw.

KLED2488



11-PC Pro Folding Hex Keys

Includes: 1/2, 3/8, 5/16, 1/4, 7/32, 3/16, 5/32, 9/64, 1/8, 7/64, 3/32 in.

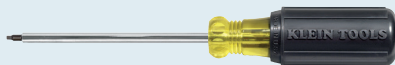
KLE70550



7-in-1 Screwdriver / Nut Driver

Magnetic, nut driver sizes: 1/4, 5/16, 11/32, 3/8, 1/2, 7/16 and 9/16 in.

KLE32807MAG



Square-Recessed Tip Screwdriver

8 in - #2, round-shank

KLE666



Non-Contact Voltage Tester

50-1 000V AC CAT IV, 1 000V.

KLENCVT1



High Leverage Diagonal Cutter

8 in - 12° angled head offers clearance for gripping, cutting edge hardness approximately 64 HRC.

KNI7421200SBA



High Leverage Lineman's Pliers

9-1/2 in - Heavy duty. High transmission ratio for easy cutting. Design requires 40% less effort compared to conventional combination pliers thanks to optimised transmission ratio.

KNI0911240SBA



Lineman's Pliers

9-1/2 in - 1 000V, insulated

KNI0908240SBA



Cobra® Water Pump Pliers

12 in - High tech 300 mm pliers athermalized, polished head, handles with non-slip plastic coating.

KNI8701300SBA



Tool-Check PLUS - 39 PC Kit

With 1/4" wrench, rapidaptor bit holder, 1/4" adapter and socket.

Metric # WER056490

Imperial # WER056491



Kraftform Kompakt Pouch - 17 PC Kit

60 RA, imperial, 89 mm bits.

WER051041



THE ULTIMATE HOME SET!

- M18 FUEL power head string trimmer head and XC8.0 battery
- M18 FUEL blower (bare tool only)
- M18 and M12 rapid charger

MILKIT282521ST2724BAT

LIMITED
QUANTITY



LIMITED
QUANTITY



THE ESSENTIAL WORK KIT!

- M18 FUEL 1/2" hammer drill kit (carrying case, multi-voltage charger and two XC5.0 batteries)
- GEN-II M18 FUEL Sawzall (bare tool only)
- Packout rolling tool box

MILKIT2804222821PACKOUT



18V Lithium-Ion Battery LXT

3.0Ah
MAK1942053
5.0Ah
MAK1966752



18V Lithium-Ion Rapid Charger
Charges 7.2V - 18V Ni-Cad, Ni-MH and Li-ion slide style batteries.
MAKDC18RC

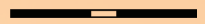


WALTER
Technologies pour surfaces

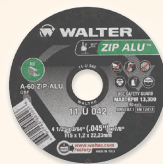
Cut-Off Wheels

7/8" arbor - Faster, cooler, freer cutting, provides premium performance while resisting twisting and bending. This allows for a true, straight cut every time.

Type 1



Type 27



Zip Alu™

3/64" thick - Designed for a wide variety of aluminum and non-ferrous metals.

Type 1

4-1/2 in # WAL11U042
5 in # WAL11U052
6 in # WAL11U062



Zipcut™

3/64" thick - Designed for cast iron, sheet metal, steel and stainless steel.

Type 1

4-1/2 in # WAL11T042
5 in # WAL11T052
6 in # WAL11T062

Type 27

4-1/2 in # WAL11T142
5 in # WAL11T152



Zip+XTRA™

1/16" thick - Heavy duty application cut-off wheel. Designed for steel and stainless steel applications and incorporates the rib design for cooler cutting.

Type 1

4-1/2 in # WAL11T242

Type 27

4-1/2 in # WAL11T453

3M

Fire Barrier Sealant CP 25WB+

10.1 fl. oz. (298 ml).
Firestop tested up to 4 hours.

TROCP25WB+10.1OZ



Temflex™ 2155 Splicing and Insulating Tape

0.76 mm (30 mil), 38 mm x 6.7 m
(1-1/2 in x 22 ft), black.

TRO21553/4X22



SecureFit™ Protective Eyewear

Clear lens. Self-adjusting feature eliminates need to stock multiple frame sizes at worksites.

3MSSF201AF



SecureFit™ Protective Eyewear

Clear anti-fog lens, protects against Ultraviolet (UV) radiation. Adjustable nose pads and soft-touch temple inlays provide increased comfort and improved grip. CSA Z94.3 Certified

3MSSF401AF

FLIR

Forehead IR Thermometer

Non-contact, ideal for quickly detecting elevated body temperature. Non-contact design eliminates need for replacement probe covers and other supplies.

FLIR200

BRADY

Nylon Cloth Label

Wire & cable wraps. Highly pliable to conform to tightly curved surfaces (black on white).

1/2 in # BRAM21500499
3/4 in # BRAM21750499



Indoor/Outdoor Vinyl Labels

Adheres to irregular, curved or rough surfaces. Resistant to chemicals, oils and detergents (black on white).

3/4 in # BRAM21750595WT



BMP21-Plus Label Printer

Automatic label formatting for wires, 104 symbols for electricity, security and data transmission. 2-year warranty.

BRABMP21PLUS



Hi-Viz Drop Shoulder Safety Tear-Away Vest

Tricot polyester interlock, 4 sealed pockets, CSA Z96-15, Class 2, Level 2

Orange

Small/Medium # PIOV1020951S/M
Large/X-Large # PIOV1020951L/XL
2X-Large/3X-Large # PIOV10209512/3XL

Yellow

Small/Medium # PIOV1021061S/M
Large/X-Large # PIOV1021061L/XL
2X-Large/3X-Large # PIOV10210612/3XL

Traffic Cone

18 in - 3 lb, hi-viz orange colour with UV protection, black rubberized base, without reflective band.

PIOV6200450O/S



Delineator Post

44 in - Loop top.
Base sold separately.

PIOV6210250O/S



Delineator Base

11 lb (5 kg)

PIOV6220170O/S





**ORDER IN ADVANCE
FOR QUICK PICK UP**

PRIORITY
**FOR ORDERS
ALREADY PLACED**

Place your orders directly on
lumen.ca or on the mobile app



Set your clocks forward on **Sunday, March 14th 2021** and don't forget to:



CLEAN
CRC74085



CHECK
CRC72105



CHANGE
DURPC1604BK



ADD
BRKSC9120BLA
BRK9120BA

Two branches to better serve Ottawa and Eastern Ontario !

OTTAWA EAST

1000, Belfast Road, Ottawa (ON) K1G 4A2
Tel.: 613 789-7500 / **Fax:** 613 789-7501
Toll free: 1 855 589-7500

OTTAWA WEST

1050, Baxter Road, Ottawa (ON) K2C 3P1
Tel.: 613 828-2930 / **Fax:** 613 828-2972
Toll free: 1 888 491-2930



Prices are subject to change without notice. All promotions are valid from **March 1st to April 30th 2021** while supplies last.
All images are for illustrative purposes only. Air Miles program is reserved to the Electrical Contractor ECAO or OEL members only.



**FSC
POUR POSITION
SEULEMENT**