

Lumen

A Sonepar Company

ONTARIO

Special deals
**September -
October
2021**



Valid for Electrical Contractors
ECAO and OEL members only

EMERGI-LITE



**Plastic Pictogram
LED Exit Sign**

4.2W LED, self-powered

EMECMPSSPE
LUMCMPSSPL



**Plastic Pictogram
LED Exit Combo Unit**

2 x 1W LED, self-powered

EMECMPCE
LUMCMPCL

LUMACELL



**Plastic Emergency LED
Lighting Fixture Battery Unit**

6V, 27W, 2 x 4W LED

EMECMPBE
LUMCMPBL



Emergency LED Lighting
6-12V

Single - 1 X 2W LED
EMECMR1E
LUMCMR1L

Double - 2 X 2W LED
EMECMR2E
LUMCMR2L

ABB

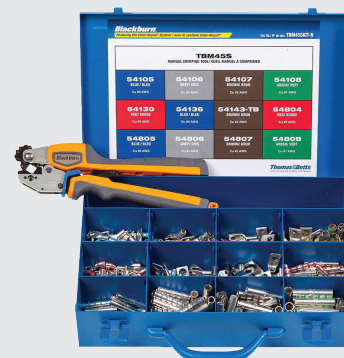
**UP TO 50% OFF
COMPRESSION TOOL KITS**

Blackburn

**TBM45S Compression Tool,
Dies and Accessories Kit**

- TBM45S compression tool / lithium battery
- 175 one-hole lugs of different sizes
- 125 bidirectional connectors of different sizes
- Metal case

THOTBM45SKITN



LIQUIDATION

LED Wall Pack

120/277V, 3000K, dimmable driver 0-10V,
type 2 distribution, gray finish, **10 year
limited warranty**. Wall mounting post
and photocell included.

72W, 8100LM

Replaces 150W, HPS

LUMKITSSENTINELLE72W2

135W, 17655LM

Replaces 400W, HPS

LUMKITSSENTINELLE135W2

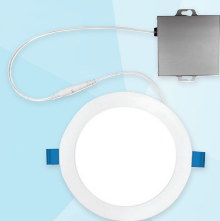


**12-Ton TBM12 Compression Tool
and Dies Kit**

- TBM12 compression tool with lithium battery
- Dies for grounding
- Dies for compression
 - from 2AWG to 750kcmil copper
 - from 2AWG to 650kcmil aluminum
- Metal case

BLAKITTB12PCRLI

MORE PRODUCTS ON PAGE 5



LED Recessed Fixture

4 in - 9W, 120V, 3000K, 600LM,
dimmable, white.

Replaces up to 65W, incandescent

STALPDL4RND9W30KWHCHOICE



Commercial LED Recessed Fixture

120/347V, adjustable power and CCT.

4 in - 6W/500LM to 15W/1200LM

STACDU4RPS4Q3CWH

6 in - 10W/900LM to 25W/2000LM

STACDU6RPS4Q3CWH

8 in - 20W/1850LM to 35W/3000LM

STACDU8RPS4Q3CWH



LED Wraparound Surface Fixture

120/277V, 4000K, frosted polycarbonate lens.

2 ft - 27W, 2878LM, interconnectable up to 15 units

Replaces 1 x 32W, T8

STAL2WMG241

4 ft - 47W, 5043LM, interconnectable up to 8 units

Replaces 2 x 32W, T8

STAL2WMG481



Under-Cabinet LED Puck Lights

4W, 120V, 3000K, 200LM, 120° beam, dimmable,
frosted lens, 120V cord included.

Recessed or surface mount installation.

White

LUMLUUCPKIT3120V4W3KFRWH

Brushed nickel

LUMLUUCPKIT3120V4W3KFRBN



Under-Cabinet LED Puck Lights

2.2W, 12V, 3000K, 150LM, 120° beam, dimmable,
frosted lens, recessed or surface mount installation,
plug-in transformer (12W, 12V) included.

White

LUMLUUCPKIT312V22W3KFRWH

Brushed nickel

LUMLUUCPKIT312V22W3KFRBN

Black

LUMLUUCPKIT312V22W3KFRBK



Under-Cabinet LED Fixture

120V, 2700/3000/4000K, 120° beam, dimmable,
frosted lens, pivoting light source.

12 in - 5W, 330LM

LUMLUUCS12IN120V5WSELFR

18 in - 8W, 530LM

LUMLUUCS18IN120V8WSELFR

24 in - 12W, 800LM

LUMLUUCS24IN120V12WSELFR

32 in - 16W, 1060LM

LUMLUUCS32IN120V16WSELFR



LED Ceiling Fixture

120/347V, 4000K, dimmable, bronze.

40W, 5878LM

STAIFSL1Q40KBZ

60W, 8034LM

STAIFSL2Q40KBZ



Suitable
for wet
location

LED Ceiling Fixture

120V, 5CCT (2700/3000/3500/4000/5000K),
dimmable, round.

4 in - 8W, 580LM

Replaces up to 60W, incandescent

STACLDK4R8WA5CWH

6 in - 15W, 1000LM

Replaces up to 75W, incandescent

STACLDK6R15WA5CWH



Suitable
for damp
location

LED Ceiling Fixture

With motion sensor

7 in - 12W, 120V, 4000K, 868LM

Frosted polycarbonate lens, flush mount,
non-dimmable, white finish.

Replaces 65W, incandescent

STACLEL7MS12W40KRNDWH



Temporary Lighting Stringlight

For 10 x 150W lamps (maximum), 100 ft
14/3 SJTW (lamps not included).

STASL100FTDSC10SKT14AWG



LED Fixture with Motion Sensor

2 X 12W, 120V. Replaces 50W, MH or 70W, HPS

3000K, 2242LM

Bronze # STAESLLS1A30KBR

White # STAESLLS1A30KWH

4000K, 2490LM

Bronze # STAESLLS1A40KBR

White # STAESLLS1A40KWH



LED Surface Fixture

4 ft - 3500/4000/5000K, dimmable 0/10V,
IP66, NSF, NEMA 4X, polycarbonate lens,
stainless steel clips, V hook included.

42W, 120/347V, 5450LM

STAVTL4LS3Q3C

42W, 120/277V, 5450LM

STAVTL4LS3W3C

65W, 120/347V, 8550LM

STAVTL4LS4Q3C

67W, 120/277V, 8560LM

STAVTL4LS4W3C



LED Projector

20W, 120V, 4000K, 1770LM, **photocell included.**
Replaces 150W, PAR38 incandescent

Bronze # LITOVFLLED2RH40K120PEDB
White # LITOVFLLED2RH40K120PEWH



LED Projector

36W (3 x 12W), 120V, 4000K, 3100LM
Replaces up to 2 x 150W, PAR38 incandescent

Bronze # LITOLF3RH40K120BZ
White # LITOLF3RH40K120WH



LED Projector

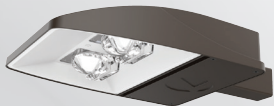
120V, 4000K, bronze finish, arm mount.

24W, 2500LM - **Replaces 150W, halogen quartz**
LITQTELEDP140K120THKDDDB

40W, 4000LM - **Replaces 300W, halogen quartz**
LITQTELEDP240K120THKDDDB

66W, 6750LM - **Replaces up to 250W, MH**
or 500W, halogen quartz
LITQTELEDP340K120THKDDDB

NEW!



Area Fixture

120/277V, 4000K, adjustable output, type 3 distribution, universal mounting bracket (round or square post 3-1/2" minimum), bronze finish.

50W/8000LM or 98W/14000LM

Replaces up to 250W, HID

LITESX1LEDP240KR3MVUPADB

146W/21000LM or 190W/25000LM

Replaces up to 400W, HID

LITESX1LEDP440KR3MVUPADB



LED Wall Pack

4000K, bronze finish

54W, adjustable output 1450 to 6950LM

120/277V - **Replaces 70W to 250W, MH**

LITTWX2LEDALO40KMVDDDB

347V - **Replaces 70W to 250W, MH**

LITTWX2LEDALO40K347DDB

108W, adjustable output 2900 to 13850LM

120/277V - **Replaces 100W to 400W, MH**

LITTWX3LEDALO40KMVDDDB

347V - **Replaces 100W to 400W, MH**

LITTWX3LEDALO40K347DDB



LED Full Cut Off Wall Pack

3000K, 120/277V, bronze finish

24W, 2900LM

Replaces up to 150W, MH

LITWPX1LEDP230KMVDDDBXD

47W, 6000LM

Replaces up to 250W, MH

LITWPX2LED30KMVDDDBXD

69W, 9200LM

Replaces up to 400W, MH

LITWPX3LED30KMVDDDBXD



High Bay LED Fixture

120/277V, 4000K, medium distribution, 6 ft cord, dimmable 0/10V, anti-glare lens, V hook and 36 in chain included.

14 x 11-1/2 in - 18000LM

LITCPHB18LMSEFGCLMDMV4K

22.5 x 11-1/2 in - 24000LM

LITCPHB24LMSEFGCLMDMV4K

22.5 x 11-1/2 in - 30000LM

LITCPHB30LMSEFGCLMDMV4K



High Bay LED Fixture

120/277V, 4000K, dimmable 0-10V, 6 ft cord, hook, clear glass lens, 120° beam, white housing.

Replaces up to 400W, HID or 6 fluorescents, T5H0

18000LM # LITJEBL18L40K80CRIWH

Replaces up to 400W, HID or 8 fluorescents, T5H0

24000LM # LITJEBL24L40K80CRIWH

Replaces up to 575W, HID or 10 fluorescents, T5H0

30000LM # LITJEBL30L40K80CRIWH



LED Striplight

120/277V, 4000K, non-dimmable.

48 in - 4500LM

Replaces 2 x 32W, T8

LITMNSLL482LLMVGZN40K

96 in - 8200LM

Replaces 4 x 32W, T8

LITMNSLL962LLMVGZN40K



LED Panel for T-Bar Ceiling

120/277V, dimmable 0/10V, adjustable output, 3 CCT (3500/4000/5000K),

1 x 4 # LITCPX1X4ALO7SWW7

2 x 2 # LITCPX2X2ALO7SWW7

2 x 4 # LITCPX2X4ALO8SWW7

juno
NEW!



Suitable for wet location

LED Recessed Fixture

4 in - 120V, adjustable output (700/1000/1200LM), adjustable CCT (2700/3000/3500/4000/5000K) or warm dim (2850/1900K), white baffle reflector, recessed lens, renovation type junction box, fixture height is under 3 in.

JUNKITJPDZ4RENO



juno
NEW!

LED Juno Connect Recessed Fixture

4 in - 10.6W, 120V, 850LM, dimmable, adjustable CCT (2700K to 5000K), controllable and programmable by smart phone (Apple and Android) via Bluetooth or Zigbee, compatible with SmartThings app and with Alexa or Google voice assistant.

Replaces 65W, incandescent

JUNWF4CRDTUWHMW

LIGHTOLIER

by @ignify

**LED Recessed Fixture**

3 in - 8W, 120V, 3 000K, 550LM, recessed, large beam, junction box included, white.

Replaces 50W, halogen
LIGMD3R069301FW

LIGHTOLIER

by @ignify

**LED Recessed Fixture**

3 in - 8W, 120V, 3 000K, 550LM, gimbal, narrow beam, junction box included.
Replaces 50W, halogen

Matte white # LIGMG3R06930NF1W
Matte black # LIGMG3R06930NF1B
Brushed nickel # LIGMG3R06930NF1N

Day-BriteCFI
by @ignify**LED Surface Fixture**

4 ft - 120/277V, 4 000LM, adjustable color 3 000/3 500/4 000K, wraparound lens and occupancy sensor.

Replace 2 X 32W, T8
CFINWL440L8CSTUNVDIMOC

PHILIPS**Linear LED Tube**

48 in - 10W, 100/277/347V, 1 600LM, glass

Replaces 32W, fluorescent

4 000K # PHI10T8CORE48840IF16G
5 000K # PHI10T8CORE48850IF16GDIM

PHILIPS**Linear LED Tube**

48 in - 24W, 120/277/347V

Made of polycarbonate

Replaces 54W, fluorescent

3 500K, 3 300LM # PHI24T5LEDHO483500IF
4 000K, 3 500LM # PHI24T5LEDHO484000IF
5 000K, 3 500LM # PHI24T5LEDHO485000IF

PHILIPS**LED PL-S Lamp**

5W, 120/277V, 560LM, GX23 base, 2 pins, frosted lens, 120° beam.

Replaces 13W, compact fluorescent

3 500K
PHI5PLSLED13H835IF5P2P
4 000K
PHI5PLSLED13H840IF5P2P

KEENE

by @ignify

**LED Wall Pack**

20W, 120/277V, 4 000K, 2 277LM, bronze.

Replaces 70W, HID

KEETW20NWG18BZ

With photocell

KEETW20NWG1PCB1BZ

KEENE

by @ignify

**LED Wall Pack**

13W, 120V, 3 000K, 1 200LM, photocell included, bronze finish, wall mount with galvanized mounting plate, frosted polycarbonate lens.

Replaces up to 70W, MH
KEESWLWWG1PCB1BZ

KEENE

by @ignify

**LED Projector**

300W, 120/277V, 4 000K, 34 025LM, bronze, yoke mount.

Replaces up to 400W, HID

120/277V # KEEFL300NWG1TFL8BZ
347V # KEEFL300NWG1TFL6BZ

KEENE

by @ignify

**LED Wall Pack**

120/277V, 4 000K, bronze

30W, 3 383LM

Replaces up to 70W, HID

KEEWP30NWG18BZ

50W, 5 695LM

Replaces up to 100W, HID

KEEWP50NWG18BZ

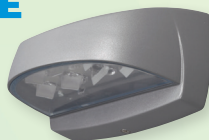
75W, 9 212LM

Replaces up to 250W, HID

KEEWP75NWG18BZ

KEENE

by @ignify

**LED Wall Pack**

120/277V, 4 000K, titanium finish.

10W, 1 050LM

Replaces up to 50W, HID

KEELPW7G38DGY

30W, 3 364LM

Replaces up to 150W, HID

KEELPW16G38DGY

71W, 5 700LM

Replaces up to 175W, HID

KEELPW32G38DGY

Day-BriteCFI
by @ignify**High Bay Fluorescent Fixture**

With 6 ft cord (lamps not included)

120/277V, 4 x F54T5H0

CFISHE454UNVCORD

347V, 4 x F54T5H0

CFISHE454347VCORD

120/277V, 6 x F54T5H0

CFISHE654UNVCORD

347V, 6 x F54T5H0

CFISHE654347VCORD



TBM840

Crimping Tool

For copper lug gage
from 8AWG to 4/0 AWG.
Metal carrying case included.

THOTBM840



14-Ton TBM14 Compression Tool, Dies and Heatshrink Assortment Kit

- TBM14 compression tool with lithium battery
- Die for grounding
- Dies for compression
 - from 2AWG to 750kcmil copper
 - from 2AWG to 650kcmil aluminum
- Metal case
- Assortment of thin-walled heat-shrink tubing including reusable plastic case

BLAKITTBM14CRLI

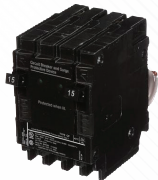


TBM8570 Compression Tool

- Dieless TBM8750 compression tool
- Capacity of compression until 900KMCM cooper
- Capacity of compression until 750 KMCM aluminium

THOTBM8750BSCR

SIEMENS



Surge Arrester Breaker

2 pôles, 10 000 A.I.C.

SIEQSA1515SPD



FirstSurge Protective Device

Rated 120/240V, split phase (up to 400A) at 50/60Hz,
surge spike capacity 60kA, less than 1 nanosecond
response time, NEMA 4X enclosure.

SIEFS060



Arc-Fault Circuit Breaker (AFCI)

1P, 10kA

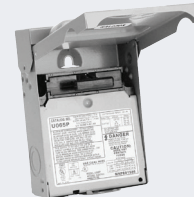
15A # SIEQA115AFCCSA
20A # SIEQA120AFCCSA



Dual Function Circuit Breaker

15A, 120V, 10kA, single pole. Combination type AFCI and
GFCI, protecting against both arc faults and (5mA) ground
faults. Self test and lockout feature make it the first in
class in electrical safety for homeowners.

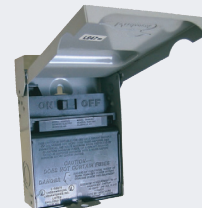
SIEQ115DFCSA



Non-Fusible "Pull-Out" Disconnect

60A, 120/240V, 1PH,
NEMA 3R, metallic

MIDU065P



Non-Automatic Disconnect Switch

60A, 120/240V, 1PH,
NEMA 3R, metallic

MIDU065NA1



Power Outlet Surface Panel

100A, 120/240V, NEMA 3R,
with 4 x 20A DDFT outlets
and 4 x 20A circuit breakers.

MIDU014C010



Compression Wire Joints for Copper Conductors

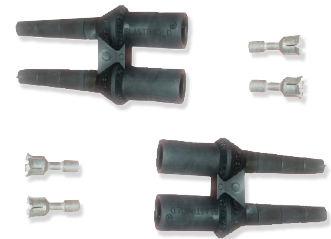


Product Code	Cable Combinations		Color
	Minimum	Maximum	
# THO54610	3 #12 mas. or tor.	2 #10 w/ 1 #12 mas. or tor.	Blue
# THO54615	3 #10 mas. or tor.	4 #10 mas. or tor.	Gray
# THO54620	3 #8 mas. or tor.	1 #4 w/ 2 #10 mas. or tor.	Brown
# THO54625TB	4 #8 mas. or tor.	1 #2 w/ 2 #12 mas. or tor.	Green
# THO54630	4 #2 mas. or tor.	2 #4 w/ 1 #10 mas. or tor.	Pink
# THO54635	6 #8 tor.	2 #4 w/ 2 #10 mas. or tor.	Black
# THO54640	3 #4 mas. or tor.	3 #4 w/ 2 #10 mas. or tor.	Orange
# THO54645TB	4 #4 mas. or tor.	2 #1 w/ 2 #10 mas. or tor.	Purple
# THO54650	3 #2 tor.	2 #10 w/ 2 #8 tor.	Yellow



Miniature Fuse, 600V

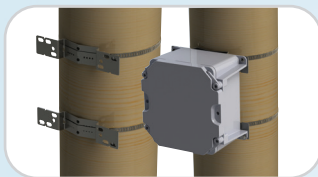
10A	# FERATM10
15A	# FERATM15
20A	# FERATM20
25A	# FERATM25
30A	# FERATM30



Break-Away Connector Kit

ESingle pole in-line, electrical rating: for 600V,
10-30A, 13/32" x 1-1/2" fuse, 14-6 AWG, copper.

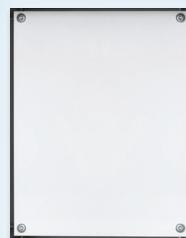
THOD65UC



Pole Mounting Kit

- Available in either galvanized or stainless steel (SS)
- Works with wood, concrete, steel and composite poles
- Installs on round, square & octagonal poles up to 15"
- Compatible with 4" to 12" JBoxes

SCEPMK412



SCEPTER® JBOX™ Back Panel

Made of 14 gauge carbon steel, white epoxy powder-coated finish, easy to cut and drill to mount devices.

6 x 6 in	# SCEBP66CSW
6 x 8 in	# SCEBP88CSW
12 x 10 in	# SCEBP1210CSW
6 x 6 in	# SCEBP1212CSW
12 x 12 in	# SCEBP1414CSW
14 x 14 in	# SCEBP1616CSW



SCEPTER® JBOX™ Hinged Cover Junction Box

The Scepter Hinged Cover JBox is NEMA 3R and 4X rated, ideally suited for indoor and outdoor industrial, MRO and OEM applications and in wash-down environments.

8 x 8 x 4 in	# SCEJBXH884
8 x 8 x 7 in	# SCEJBXH887
12 x 10 x 6 in	# SCEJBXH12106
12 x 12 x 4 in	# SCEJBXH12124
12 x 12 x 6 in	# SCEJBXH12126
12 x 12 x 8 in	# SCEJBXH12128

Also available:

14 x 14 x 8 in, 14 x 14 x 10 in and 16 x 16 x 10 in



Clear Cover

Weatherproof, heavy-duty

INTWP5100C



Electronic Timer Control

20A, 1 circuit, NEMA 1, 1P, 7-day astronomic schedule, indoor type 1 metal enclosure

INTET8015C

Photocell

For HID or LED fixtures



Stem and swivel type,
120V, 6A, 1 650W at 277VAC

INTEK4236S



Twist Lock Type

120/277V, 8A, 2 200W at 277VAC

INTLED4536SC



Medium Fuse Puller

0-100A, 250V & 600V,
1/2-1" diameter, 7-1/2" long

IDE34002



Wire Pulling Lubricant

3.78L (1 gallon) bucket, Yellow 77

IDE31351



Wire Pulling Lubricant

950 ml, Jaune 77

IDE31358



FIRST ALERT

SAFETY TO THE NEXT LEVEL

INSTALL IT
DONE

10 YEAR



10-Year
Battery



10-Year
Sensor



10-Year
Warranty



FIRPR710A

Slim Photoelectric
Smoke Alarm with
10-Year Battery



BRK9120LBLE

Hardwired Ionization
Smoke Alarm with
10-Year Battery Backup

For full line of products, visit
brkcanada.ca

© 2021 BRK Brands, Inc. All rights reserved. Distributed by BRK Brands, Inc., Aurora, Illinois 60504. BRK Brands, Inc. is a subsidiary of Newell Brands Inc. (NYSE:BBK).



Appleton



4-Hole Aluminum Junction Box

Depth: 1-1/2 in

1/2 in # APPBKXS1A

3/4 in # APPBKXS2A

Depth: 2-1/4 in

1/2 in # APPBKXM1A

3/4 in # APPBKXM2A



Insulation Piercing Connector

New residential service entrance 200A and less. Bolt head size: 1/2 in. Conductor range: main 250MCM @ 1AWG, tap 4AWG @ 4/0. As per Z462 and Z801 Standards.

TROTTD2610XFBTA



Commercial Series

Duplex Receptacle



15A, white
HUBCR15WHI



20A, white
HUBCR20WHI



15A, isolated ground
HUBCR5252IG

Switch



15A, 1P, white
HUBCS115W



20A, 1P, white
HUBCS120W



15A, 1P, 3-way, white
HUBCS315W

Decorator Commercial Series

Duplex Receptacle



15A, 125V
HUBDR15WHI



20A, 125V
HUBDR20WHI

Switch



15A, 120/277V, 1P
HUBDS115W



20A, 120/277V, 1P
HUBDS120W



15A, 120/277V,
1P, 3-way
HUBDS315W



20A, 120/277V,
1P, 3-way
HUBDS320W

LEVITON®



Occupancy Sensor Lighting Control

120V @ 347V high-bay fixture mount,
with passive infrared technology.

LEVOSFHUITW



Occupancy PIR Motion Sensor

15A, 120V, 600W LED/CFL and 1800W
incandescent/halogen, single pole or 3-way,
180° field of view, 900 ft² coverage.
Wallplate not included.

LEVIPS151LZ



Dimming Occupancy PIR Sensor

2.5A, 120V, 150W LED/CFL and 600W
incandescent/halogen, single pole or 3-way, 180°
field of view, 900 ft² coverage. Wallplate not included.

LEVIPS61LZ



Multi-Technology Ceiling Sensor

2000 ft², line voltage, photocell included.

120/277V
LEVODC20MDW

347V, 360° field of view
LEVOSC20M0W



Multi-Tech Occupancy PIR Sensor

Single pole, 60° or 180° field of view, 2400 ft² coverage,
10 to 30 minute time delay. Wallplate not included.

120/277V # LEVOSSMTMDW
347V # LEVOSSMTM3W



Occupancy PIR Motion Sensor

With auto-tuning, single pole, 180° field of view,
2100 ft² coverage. Wallplate not included.

120/277V # LEVODS10IDW
347V # LEVODS10I3W

°STELPRO



MULTIPURPOSE PORTABLE HEATER - SCH

- SAFE AND STURDY
- CONVENIENT AND EASY TO TRANSPORT
- COOL TOUCH HOUSING
- ERGONOMIC CARRYING HANDLE FOR EASY CABLE STORAGE
- SEALED AND LIFETIME LUBRICATED MOTOR (SCH4800T)
- VERSATILE: FIXED OR TEMPORARY CONNECTION WITH OPTIONAL BRACKET AVAILABLE

STESCH48T
STESCH4800T

STESCH48TWB
STESCH48TWBPL



STANDARD CONVECTOR - SHC

- FITS ANY BUDGET
- CONTEMPORARY LOOK

Without built-in thermostat

STESHC0502WCW
STESHC1002WCW
STESHC1502WCW
STESHC2002WCW

With built-in thermostat

STESHC0502W
STESHC1002W
STESHC1502W
STESHC2002W



1-844-STELPRO | WWW.STELPRO.COM



Platinum member



THE HEATED FLOORS **SPECIALIST**

With the purchase of a FLEXTHERM heating cable and thermostat

RECEIVE A FREE
UNCOUPLING MEMBRANE.*

FLEKITHGS240L....



Proudly Canadian

* Includes one HGS cable, one FLK50 thermostat and the sq. ft. amount of uncoupling membrane required to cover the cable covering.

1-800-353-9843 | client@flextherm.com

ONTARIO - Effective from September 1st to October 31st 2021



9

CONVECTAIR

Legendary comfort

NEW!

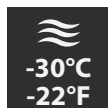


Ductless Single Zone HEAT PUMP Capella26 Series

Performance up to



Cooling



Heating

Up to

26.3 SEER
IN COOLING

12.5 HSPF
IN HEATING

Product #*		CONKIT8090	CONKIT8120	CONKIT8180	CONKIT8240
Nominal cooling capacity	W (BTU/hr)	2638 (9000)	3517 (12000)	4982 (17000)	7034 (24000)
Nominal heating capacity	W (BTU/hr)	3370 (11500)	3517 (12000)	5275 (18000)	7620 (26000)

* Includes 1 indoor unit and 1 outdoor unit.

Electric Vehicle

Energy

Management

System



DCC-12

Allows the connection of a charging station to a fully loaded electrical panel.

Ask your branch representative for more information about the DCC product line. Products in stock.

DCC
by **rve**
dcelectric.com



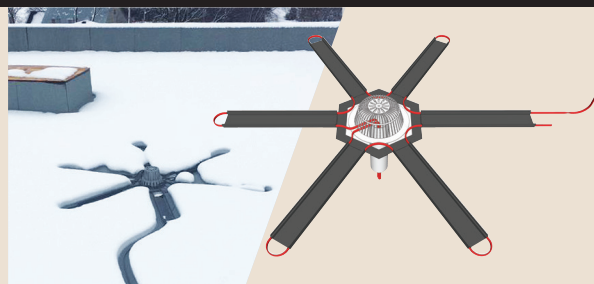
nvent
RAYCHEM



Pre-Assembled Heating Cable

120V, self-regulating, with 6 ft lead cable and lighted plug.

- 6 ft # RAYFG16P
- 12 ft # RAYFG112P
- 18 ft # RAYFG118P
- 24 ft # RAYFG124P
- 36 ft # RAYFG136P
- 50 ft # RAYFG150P
- 75 ft # RAYFG175P
- 100 ft # RAYFG1100P



RIM-DT Ice Melting System for Roof Drains

Includes cable, connection kit and channel panel.

- 120V # RAYF6205AL231
- 208/240V # RAYF6205AL232

MINERAL INSULATED (M.I.) ELECTRICAL CABLES

1AWG, 1C, SYSTEM1850, 600V	# CABPYR1/1-496
1/0AWG, 1C, SYSTEM1850, 600V	# CABPYR1/1/0-512
4AWG, 1C, SYSTEM1850, 600V	# CABPYR1/4-402
12AWG, 2C, SYSTEM1850, 600V	# CABPYR2/12-402
14AWG, 2C, SYSTEM1850, 600V	# CABPYR2/14-371
16AWG, 2C, SYSTEM1850, 30V	# CABPYR2/16-246T
16AWG, 2C, SYSTEM1850, 600V	# CABPYR2/16-340
16AWG, 2C, BLINDE, SYSTEM1850, 300V	# CABPYR2/16-364TS
18AWG, 2C, SYSTEM1850, 300V	# CABPYR2/18-215T
18AWG, 2C, BLINDE, SYSTEM1850, 300V	# CABPYR2/18-324TS

All accessories are also available.

PYROTENAX

NOW IN INVENTORY AT **Lumen**

nVent PRESENTS A PYRO FOR LIFE PRODUCTION A FIRE-RATED CABLE FILM "BETTER THAN CONCRETE" SYSTEM 1850
CIRCUIT CONDUCTING COPPER CONDUCTORS INSULATION FIRE MAGNESIUM OXIDE AND SEAMLESS COPPER SHEATH
CLASSIFICATION TESTING UL 2196/ULC-S139 INSULATION VOLTAGE RATING 600V CONDUCTOR SIZE 16 AWG - 500 KCMIL MAXIMUM EXPOSURE 1010°C (1850°F)

2

RATED 2 HOURS

FIRE-RESISTIVE CABLE TESTED TO THE
UL 2196/ULC-S139 FIRE TEST STANDARDS

nVent.com

nvent

PYROTENAX

Chubb

New IN STOCK

FIRE ALARM SYSTEM



Two-Wire Base
C/w Flange, 12/24VDC
EDWEDWB110LP



**Photoelectric
Sensor / Detector Head**
EDWEDW2151A



Heat Detector
135°F (57°C), FT/RR
EDW5601A



**French
Conventional
FAP Red**
5 zones
EDWFX5RF
10 zones
EDWFX10RF



Temporal Horn
High/low dB, 24V, red
EDWG1ARN



Temporal Horn-Strobe
High/low dB, 24V, red
EDWG1VRN

ONTARIO - Effective from September 1st to October 31st 2021

f in v o

Lumen

11



18V Lithium-Ion LXT Battery

3.0Ah

MAK1942053

5.0Ah

MAK1966752

DURACELL[®]

NEW PRODUCT

2021



1.5V Alkaline Procell[®] Intense Power Battery

Specifically engineered to deliver precise pulses of energy while lasting longer in high-drain professional devices.

AA
DURPX1500

AAA
DURPX2400

D
DURPX1300

C
DURPX1400

9V
DURPX1604



Lineman's Pliers

Pliers black anodized, head polished, handles with non-slip plastic coating.

KNI0901240SBA



High Leverage Diagonal Cutters

Precision cutting edges additionally induction-hardened (cutting edge hardness approx. 64 HRC), for all sorts of wire including 1/8" piano wire.

KNI7401250SBA



Kneeuro Ultra Flex III Knee Pads

The articulating hinged design ensures proper placement all day long – set them once and forget you are even wearing them.

PIOVS96110



1 000V Insulated Screwdriver

For Phillips screws

WER006159



6-PC Insulated Screwdriver Set

1 000V rated. Includes: 2 slotted, 2 Phillips, 2 square and plastic rack.

WER347777



Rain Suit

Polyester / PVC, green, with 2 front pockets.

Medium # PIOV3040140M

Large # PIOV3040140L

X-Large # PIOV3040140XL

XX-Large # PIOV30401402XL



SLAP SHOT[™] Cleaner / Degreaser

Highly effective, residue-free, fast evaporating. Dissolves and removes grease, oil, and grime on contact.

500 ml aerosol

WAL53C502



Drill Bit for Hand Held Tools in Mild Steel

Exclusive quick shank that ensures fast and secure tightening inside any keyed or keyless chucks.

1/8 in # WAL01A008

3/16 in # WAL01A012

5/16 in # WAL01A020

3/8 in # WAL01A024



5-PC Carbide Burr Set

1/4 in shank - For the toughest applications in a wide range of materials.

WAL01V990



Penlight

Delivers 100LM of output. The innovative protective rubber bite zone at the end of the light allows you to safely direct light while performing two-handed tasks.

Includes: 2 x AAA Batteries.

MIL2105



M18 FUEL™ PACKOUT™

Wet/Dry Vacuum

2.5 gallons. Fully compatible with the Milwaukee PACKOUT™ Modular Storage System. **Tool only.**

MIL097020



M18™ Search Light

1 250LM, four output modes: spot, flood, spot/flood and strobe. **Tool only.**

MIL235420



M18 FUEL™ Metal Saw

5-3/8" – 5-7/8" - delivers the fastest cuts with the longest tool life and up to 370 cuts in 3/4" EMT. **Tool only.**

MIL278220



M18 FUEL™ SAWZALL®

Reciprocating Saw

1-1/4" stroke length. **Tool only.**

MIL282120



M18 FUEL™ HACKZALL®

Reciprocating Saw

Fastest cutting and most powerful one-handed reciprocating saw. **Tool only.**

MIL271920



Heavy-Duty Cable Cutter

31-1/2 in - Lightweight, fiberglass handles with rubber grip.

GRE706



Nylon Cable Protector

3 to 6 in - Fits in the end of conduit to shield the cable from sharp edges as it is being fed through.

GRE4883



Bushing

7/8 in - Triple lock design holds bushing securely. Locks securely into metal studs from 24 gauge to 12 gauge (0.6 mm to 2.5 mm).

Pack of 100

GRE711C

Pack of 1000

GRE711M



Slug-Buster® Knockout Kit

1" ratchet wrench allows use with both 3/8" and 3/4" draw studs. 1/2" to 2" conduit.

GRE7238SB



Carbide Cutter Set

7 pieces. Cuts stainless steel quickly and easily with "Quick-change" technology. **Includes:** 7/8", 1-1/8", 1-3/8", 1-3/4" and 2".

GRE660



Clear Lube Pulling Lubricant - 0.95L

Designed for use within electrical or datacom cable pulls. Environmentally safe, non-hazardous, non-toxic and non-corrosive.

GRECLRQ

FLUKE



Hard Point™ Test Lead Set

One pair (red/black). Cat IV 600V.
Cat III 1 000V, 10A rating.

FLUTL75



True-RMS AC/DC Clamp Meter

Clamp meter with iFlex transmits results via Fluke Connect Measurements app, stays safely away from the arc flash zone through Bluetooth connectivity to Apple and Android devices.

FLU376FC



ToolPak™ Magnetic Meter Hanger Kit

Includes: two universal hanger clips, hook and loop straps (two lengths), adaptor and strong magnet

FLUTPAK



SureGrip™ Industrial Test Probes

CAT II, 1 000V, 10A rating. Recommended for use with TL222 and TL224 test leads.

FLUTP220



325 True RMS Clamp Meter

CAT IV 300V, CAT III 600V. Measures AC/DC current, voltage, temperature, frequency. Backlit, easy to read display.

FLU325



PRM-6 Phase Sequence and Motor Rotation Tester

Test the motor rotation of 3-phase systems, and verify 3-phase receptacle wiring and phase sequencing with test leads.

AMPPRM6

KLEIN TOOLS

**WHILE
SUPPLIES LAST**



Clamping Worklight

Head rotates a full 360° and pivots up to 90°. **Includes:** 4 x AA batteries.

KLE56029



Klein Kleeners® Hand Cleaning Towels

Pack of 72 pre-moistened towels. Quickly loosens, dissolves, and absorbs dirt and grease.

KLE51425

BUY a crimping and cutting tool for connectors
GET A FREE wire stripper



Crimping and Cutting Tool

The crimper crimps 10 to 22 AWG insulated and non-insulated terminals. The cutter cuts, strips, loops and gauges 10-18 AWG solid wire.

KLEKITCRIMPERSTRIPPER



5-Piece Folding Hex Key Set

Includes: 3/16, 7/32, 1/4, 5/16 and 3/8 in. Two key positions for extra leverage. Hex ends are square-cut for a secure fit and maximum contact to prevent slippage and stripping.

KLE70579



Self-Leveling Cross-Line Laser Level

With plumb spot. Integrated magnetic 360° mounting bracket with 1/4" and 5/8" tripod mounting threads. IP54: water and dust resistant. Hard plastic carrying case included.

KLE93LCLS



15-in-1 Multi-Bit Ratcheting Screwdriver

Includes: Phillips (#0, #1, #2, #3), Slotted (3/16", 1/4"), Square (#1, #2), Torx® (T10, T15, T20, T25), and Combo (#1, #2) bits.

KLE32305



Safety Glasses

Blue / gray frame, clear lenses with anti-fog and anti-scratch protection.

3MSSF401SGAFBLUF



Privo™ Safety Glasses

Clear anti-fog lens, black frame. Euro-Style. 99.9% UV protection. Polycarbonate lens.

3MS12261



Privo™ Safety Glasses

Gray anti-fog lens, black frame. Soft nose bridge and temple tips. Polycarbonate lenses absorb 99.9% UV. Meets the requirements of CSA Z94.3-2007 and the High Impact Requirements of ANSI Z87.1-2003.

3MS12262



E-A-R Soft 3M™ Earplugs

Yellow neon, uncorded, pliable foam offers comfortable extended wear. Regular size fits most ear canals. Noise Reduction Rating (NRR): 33 dB.

Pack of 200 # 3MS3121250



IC 15WB+ Fire Barrier Sealant

20 fl. oz (591 ml)

Firestop tested up to 3 hours.

TROIC15WB+20OZ

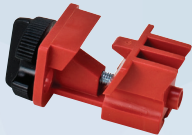


3M™ Fire Barrier Pillow

Self-contained, highly intumescent product designed to firestop a wide variety of through-penetrations including cable trays, conduit and blank openings, which penetrate fire-rated construction.

2 x 4 x 9 in # TROFBSLP249

3 x 6 x 9 in # TROFBSLP369



Universal Multi-Pole Breaker Lockout

BRA66321



Ball Valve Lockout

Locks out pipes 1/2" to 2-1/2"

BRABS07ARD



Electrical Plug Lockout

Constructed of rugged polypropylene, small 110V plugout.

BRA65674



Clamp-On Breaker Lockout

Extremely versatile - works on a wide range of single-pole and internal-trip multi-pole breakers.

120/277V # BRA65396

480/600V # BRA65397



BMP21-Plus Label Printer

Automatic label formatting for wires, 104 symbols for electricity, security and data transmission. 2-year warranty.

BRABMP21PLUS



Nylon Cloth Label

Wire & cable wraps. Highly pliable to conform to tightly curved surfaces (black on white).

1/2 in # BRAM21500499

3/4 in # BRAM21750499



Indoor / Outdoor Vinyl Labels

Adheres to irregular, curved or rough surfaces. Resistant to chemicals, oils and detergents (black on white).

1/2 in # BRAM21500595WT

3/4 in # BRAM21750595WT

FLO Charging Solutions

Available at Lumen



Commercial



SmartTWO

Level 2



Ideal for sites that are exposed to harsh weather conditions or vandalism.

Applications:

Retail stores, shopping centers, commercial properties, hotels, restaurants, cities, public buildings



SmartDC

Fast Charging Station



Ideal for locations close to transit corridors or busy parking lots.

Applications:

Rest areas, gas stations, retail stores, shopping centers, commercial properties, restaurants, fleets, parking lots



SmartTwo-BSR

Level 2



Designed for curbside installation, making them ideal for city streets or busy areas.

Applications:

Curbside on city streets, retail stores, shopping centers, restaurants



CoRe+

Level 2

Ideal for areas that require multiple electric vehicles to charge at once.

Applications:

Apartment buildings, condominiums, commercial properties, workplaces, fleets, parking lots



Download the Lumen app!



Place your orders directly online at lumen.ca or via the Lumen app.



Two branches to better serve Ottawa and Eastern Ontario !

OTTAWA EAST

1000, Belfast Road, Ottawa (ON) K1G 4A2

Tel.: 613 789-7500 / **Fax:** 613 789-7501

Toll free: 1 855 589-7500

OTTAWA WEST

1050, Baxter Road, Ottawa (ON) K2C 3P1

Tel.: 613 828-2930 / **Fax:** 613 828-2972

Toll free: 1 888 491-2930



A Sonepar Company

Prices are subject to change without notice. All images are for illustrative purposes only. Air Miles program is reserved to the Electrical Contractor ECAO or OEL members only. We are currently experiencing an exceptionally high demand for many popular products. As a result, some products advertised in this flyer may not be available. Please check your local branch for availability or visit lumen.ca. We are currently working on replenishing supplies as quickly as possible and apologize for any inconvenience this may cause.

