

The Lumen logo is rendered in a white, italicized, sans-serif font with a thin underline beneath the letters.

A Sonepar Company

The ETE connectivity logo features the letters 'ETE' in a large, bold, white sans-serif font. To the left of the letters are three horizontal white bars of varying lengths, stacked vertically. Below 'ETE' is the word 'connectivity' in a smaller, lowercase, white sans-serif font.The background of the entire page is a photograph of a utility pole silhouetted against a sunset sky. The sky transitions from a deep blue at the top to a bright orange and red at the bottom. The utility pole is a dark vertical structure with several horizontal cross-arms. Each cross-arm has insulators and power lines attached. The lines extend across the frame from the pole towards the left and right edges.

# TERMINATION AND SPLICING

## Medium Voltage



A Sonepar Company

## Teck Cable - 1kV, 3 and 4 Conductors

| TYPE OF CABLE                  | HEAT SHRINK |
|--------------------------------|-------------|
| Cable # 14 to # 4 AWG          | TECK-41     |
| Cable # 2 to # 3/0 AWG         | TECK-42     |
| Cable # 4/0 to # 400 MCM       | TECK-43     |
| Cable # 500 MCM to # 1 000 MCM | TECK-44     |



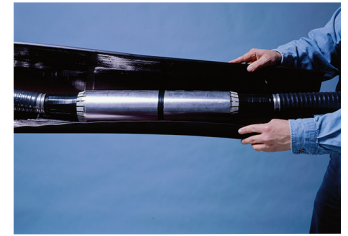
CSJA



CSJA - TECK



HVS-MOD



HVSA

## Teck Cable - 5kV, 3 Unshielded Conductors

| TYPE OF CABLE   | COLD SHRINK<br>INDOOR/OUTDOOR          | HEAT SHRINK<br>INDOOR/OUTDOOR | HEAT SHRINK |
|-----------------|--|-------------------------------|-------------|
| CAB1/0TECK3C5KV | 3 x CSTO-82G<br>1 x MOD-3B-CSTI / CSTO | 3 x HVT-51<br>1 x MOD-3A-HVT  | TECK-531    |
| CAB2/0TECK3C5KV | 3 x CSTO-82G<br>1 x MOD-3C-CSTI / CSTO | 3 x HVT-51<br>1 x MOD-3A-HVT  | TECK-531    |
| CAB3/0TECK3C5KV | 3 x CSTO-82G<br>1 x MOD-3C-CSTI / CSTO | 3 x HVT-52<br>1 x MOD-3A-HVT  | TECK-531    |
| CAB4/0TECK3C5KV | 3 x CSTO-82G<br>1 x MOD-3C-CSTI / CSTO | 3 x HVT-52<br>1 x MOD-3A-HVT  | TECK-531    |
| CAB250TECK3C5KV | 3 x CSTO-82G<br>1 X MOD-3D-CSTI / CSTO | 3 x HVT-52<br>1 x MOD-3A-HVT  | TECK-532    |
| CAB350TECK3C5KV | 3 x CSTO-83G<br>1 x MOD-3D-CSTI / CSTO | 3 x HVT-52<br>1 x MOD-3A-HVT  | TECK-532    |
| CAB500TECK3C5KV | 3 x CSTO-83G<br>1 x MOD-3E-CSTI / CSTO | 3 x HVT-52<br>1 x MOD-3A-HVT  | TECK-532    |
| CAB750TECK3C5KV | 3 x CSTO-83G<br>1 x MOD-3E-CSTI / CSTO | 3 x HVT-53<br>1 x MOD-3B-HVT  | TECK-532    |

*The connectors are not included, unless otherwise indicated.*

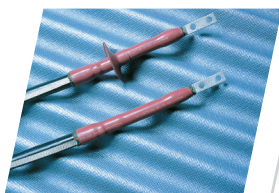
## Teck Cable - 15kV, 3 Conductors

| TYPE OF CABLE          | COLD SHRINK INDOOR               | COLD SHRINK OUTDOOR               | COLD SHRINK          | HEAT SHRINK INDOOR                | HEAT SHRINK OUTDOOR                | HEAT SHRINK      |
|------------------------|----------------------------------|-----------------------------------|----------------------|-----------------------------------|------------------------------------|------------------|
| CAB2TECK3C15KV133%IL   | 3 x CSTI-152G<br>1 x MOD-3B-CSTI | 3 x CSTO-152G<br>1 x MOD-3B-CSTO  | 1 x CSJA-3-1521-TECK | 3 x HVT-Z-151-G<br>1 x MOD-3X-HVT | 3 x HVT-Z-151-SG<br>1 x MOD-3A-HVT | 1 x HVSA-3-1521S |
| CAB1TECK3C15KV133%IL   | 3 x CSTI-152G<br>1 x MOD-3B-CSTI | 3 x CSTO-152G<br>1 x MOD-3B-CSTO  | 1 x CSJA-3-1521-TECK | 3 x HVT-Z-151-G<br>1 x MOD-3X-HVT | 3 x HVT-Z-151-SG<br>1 x MOD-3A-HVT | 1 x HVSA-3-1521S |
| CAB1/0TECK3C15KV133%IL | 3 x CSTI-152G<br>1 x MOD-3C-CSTI | 3 x CSTO-152G<br>1 x MOD-3C-CSTO  | 1 x CSJA-3-1521-TECK | 3 x HVT-Z-151-G<br>1 x MOD-3X-HVT | 3 x HVT-Z-151-SG<br>1 x MOD-3A-HVT | 1 x HVSA-3-1521S |
| CAB2/0TECK3C15KV133%IL | 3 x CSTI-152G<br>1 x MOD-3C-CSTI | 3 x CSTO-152G<br>1 x MOD-3C-CSTO  | 1 x CSJA-3-1521-TECK | 3 x HVT-Z-152-G<br>1 x MOD-3X-HVT | 3 x HVT-Z-152-SG<br>1 x MOD-3A-HVT | 1 x HVSA-3-1521S |
| CAB3/0TECK3C15KV133%IL | 3 x CSTI-152G<br>1 x MOD-3C-CSTI | 3 x CSTO-152G<br>1 x MOD-3C-CSTO  | 1 x CSJA-3-1521-TECK | 3 x HVT-Z-152-G<br>1 x MOD-3X-HVT | 3 x HVT-Z-152-SG<br>1 x MOD-3A-HVT | 1 x HVSA-3-1521S |
| CAB4/0TECK3C15KV133%IL | 3 x CSTI-152G<br>1 x MOD-3C-CSTI | 3 x CSTO-152G<br>1 x MOD-3C-CSTO  | 1 x CSJA-3-1521-TECK | 3 x HVT-Z-152-G<br>1 x MOD-3X-HVT | 3 x HVT-Z-152-SG<br>1 x MOD-3A-HVT | 1 x HVSA-3-1521S |
| CAB250TECK3C15KV133%IL | 3 x CSTI-153G<br>1 x MOD-3D-CSTI | 3 x CSTO-153-G<br>1 x MOD-3D-CSTO | 1 x CSJA-3-1521-TECK | 3 x HVT-Z-152-G<br>1 x MOD-3X-HVT | 3 x HVT-Z-152-SG<br>1 x MOD-3A-HVT | 1 x HVSA-3-1522S |
| CAB300TECK3C15KV133%IL | 3 x CSTI-153G<br>1 x MOD-3D-CSTI | 3 x CSTO-153-G<br>1 x MOD-3D-CSTO | 1 x CSJA-3-1521-TECK | 3 x HVT-Z-152-G<br>1 x MOD-3X-HVT | 3 x HVT-Z-152-SG<br>1 x MOD-3A-HVT | 1 x HVSA-3-1522S |
| CAB350TECK3C15KV133%IL | 3 x CSTI-153G<br>1 x MOD-3D-CSTI | 3 x CSTO-153-G<br>1 x MOD-3D-CSTO | 1 x CSJA-3-1521-TECK | 3 x HVT-Z-152-G<br>1 x MOD-3X-HVT | 3 x HVT-Z-152-SG<br>1 x MOD-3A-HVT | 1 x HVSA-3-1522S |
| CAB500TECK3C15KV133%IL | 3 x CSTI-154G<br>1 x MOD-3E-CSTI | 3 x CSTO-153-G<br>1 x MOD-3E-CSTO | 1 x CSJA-3-1522-TECK | 3 x HVT-Z-153-G<br>1 x MOD-3Y-HVT | 3 x HVT-Z-153-SG<br>1 x MOD-3B-HVT | 1 x HVSA-3-1523S |
| CAB750TECK3C15KV133%IL | 3 x CSTI-154G<br>1 x MOD-3E-CSTI | 3 x CSTO-154-G<br>1 x MOD-3E-CSTO | 1 x CSJA-3-1522-TECK | 3 x HVT-Z-153-G<br>1 x MOD-3Y-HVT | 3 x HVT-Z-153-SG<br>1 x MOD-3B-HVT | 1 x HVSA-3-1523S |

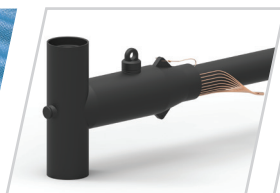
## Teck cable - 28kV, 3 Conductors

| TYPE OF CABLE          | COLD SHRINK INDOOR               | COLD SHRINK OUTDOOR              | COLD SHRINK          | HEAT SHRINK INDOOR                     | HEAT SHRINK OUTDOOR                    | HEAT SHRINK                 |
|------------------------|----------------------------------|----------------------------------|----------------------|--|--|-----------------------------|
| CAB1TECK3C28KV100%IL   | 3 x CSTI-282G<br>1 x MOD-3B-CSTI | 3 x CSTO-282G<br>1 x MOD-3B-CSTO | 1 x CSJA-3-2822-TECK | 3 x HVT-Z-252/352-G<br>1 x MOD-3X-HVT  | 3 x HVT-Z-252/352-SG<br>1 x MOD-3A-HVT | 3 x HVS-2521S<br>1 x HVSA-3 |
| CAB2/0TECK3C28KV100%IL | 3 x CSTI-282G<br>1 x MOD-3C-CSTI | 3 x CSTO-282G<br>1 x MOD-3C-CSTO | 1 x CSJA-3-2822-TECK | 3 x HVT-Z-252/352-G<br>1 x SMOD-3X-HVT | 3 x HVT-Z-252/352-SG<br>1 x MOD-3A-HVT | 3 x HVS-2521S<br>1 x HVSA-3 |
| CAB4/0TECK3C28KV100%IL | 3 x CSTI-283G<br>1 x MOD-3C-CSTI | 3 x CSTO-283G<br>1 x MOD-3C-CSTO | 1 x CSJA-3-2822-TECK | 3 x HVT-Z-252/352-G<br>1 x MOD-3X-HVT  | 3 x HVT-Z-252/352-SG<br>1 x MOD-3A-HVT | 3 x HVS-2521S<br>1 x HVSA-3 |
| CAB250TECK3C28KV100%IL | 3 x CSTI-283G<br>1 x MOD-3D-CSTI | 3 x CSTO-283G<br>1 x MOD-3D-CSTO | 1 x CSJA-3-2822-TECK | 3 x HVT-Z-252/352-G<br>1 x MOD-3X-HVT  | 3 x HVT-Z-252/352-SG<br>1 x MOD-3A-HVT | 3 x HVS-2521S<br>1 x HVSA-3 |
| CAB350TECK3C28KV100%IL | 3 x CSTI-284G<br>1 x MOD-3D-CSTI | 3 x CSTO-284G<br>1 x MOD-3D-CSTO | 1 x CSJA-3-2822-TECK | 3 x HVT-Z-252/352-G<br>1 x MOD-3X-HVT  | 3 x HVT-Z-252/352-SG<br>1 x MOD-3A-HVT | 3 x HVS-2521S<br>1 x HVSA-3 |
| CAB500TECK3C28KV100%IL | 3 x CSTI-284G<br>1 x MOD-3D-CSTI | 3 x CSTO-284G<br>1 x MOD-3D-CSTO | 1 x CSJA-3-2823-TECK | 3 x HVT-Z-253/353-G<br>1 x MOD-3Y-HVT  | 3 x HVT-Z-253/353-SG<br>1 x MOD-3B-HVT | 3 x HVS-2522S<br>1 x HVSA-3 |

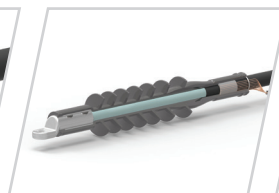
*The connectors are not included, unless otherwise indicated*



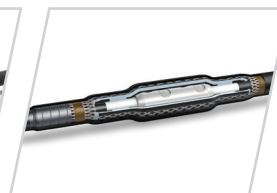
HVT-Z



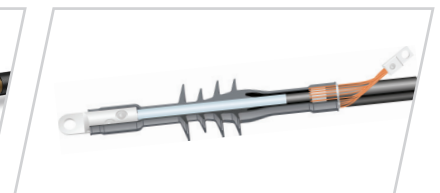
ELB 600A



CST



CSJA



CSTI & CSTO

## Power Cable XLPE - 15KV, 1 Conductor

| TYPE OF CABLE             | COLD SHRINK INDOOR | COLD SHRINK OUTDOOR | COLD SHRINK   | HEAT SHRINK INDOOR | HEAT SHRINK OUTDOOR | HEAT SHRINK       |
|---------------------------|--------------------|---------------------|---------------|--------------------|---------------------|-------------------|
| CAB1XLPE15KV133%IL1/3NC   | Use outdoor model  | 1 x CSTO-152J       | 1 x CSJA-1521 | 1 x HVT-Z-151-J    | 1 x HVT-Z-151-SJ    | 1 x HVS-S-1512S-J |
| CAB20XLPE15KV133%1/3NC    | Use outdoor model  | 1 x CSTO-152J       | 1 x CSJA-1521 | 1 x HVT-Z-152-J    | 1 x HVT-Z-152-SJ    | 1 x HVS-S-1512S-J |
| CAB40XLPE15KV133%IL1/3NC  | Use outdoor model  | 1 x CSTO-152J       | 1 x CSJA-1522 | 1 x HVT-Z-152-J    | 1 x HVT-Z-152-SJ    | 1 x HVS-S-1512S-J |
| CAB250XLPE15KV133%IL1/3NC | Use outdoor model  | 1 x CSTO-153J       | 1 x CSJA-1522 | 1 x HVT-Z-152-J    | 1 x HVT-Z-152-SJ    | 1 x HVS-S-1512S-J |
| CAB500XLPE15KV133%IL1/3NC | Use outdoor model  | 1 x CSTO-153J       | 1 x CSJA-1522 | 1 x HVT-Z-153-J    | 1 x HVT-Z-153-SJ    | 1 x HVS-S-1513S-J |

## Power Cable XLPE - 28KV, 1 Conductor

| TYPE OF CABLE             | COLD SHRINK INDOOR | COLD SHRINK OUTDOOR | COLD SHRINK   | HEAT SHRINK INDOOR  | HEAT SHRINK OUTDOOR  | HEAT SHRINK     |
|---------------------------|--------------------|---------------------|---------------|---------------------|----------------------|-----------------|
| CAB10XLPE28KV100%IL1/3NC  | CSTI-282J          | 1 x CSTO-282J       | 1 x CSJA-2822 | 1 x HVT-Z-252/352-J | 1 x HVT-Z-252/352-SJ | 1 x HVS-2511E-J |
| CAB20XLPE28KV100%1/3NC    | CSTI-282J          | 1 x CSTO-282J       | 1 x CSJA-2822 | 1 x HVT-Z-252/352-J | 1 x HVT-Z-252/352-SJ | 1 x HVS-2511E-J |
| CAB40XLPE28KV100%IL1/3NC  | CSTI-283J          | 1 x CSTO-283J       | 1 x CSJA-2822 | 1 x HVT-Z-253/353-J | 1 x HVT-Z-253/353-SJ | 1 x HVS-2511E-J |
| CAB250XLPE28KV100%IL1/3NC | CSTI-283J          | 1 x CSTO-283J       | 1 x CSJA-2822 | 1 x HVT-Z-253/353-J | 1 x HVT-Z-253/353-SJ | 1 x HVS-2511E-J |
| CAB500XLPE28KV100%IL1/3NC | CSTI-284J          | 1 x CSTO-283J       | 1 x CSJA-2823 | 1 x HVT-Z-253/353-J | 1 x HVT-Z-253/353-SJ | 1 x HVS-2512E-J |

## Right-Angled Connector - 15/28kV deadbreak 600A

| TYPE OF CABLE             | 15/28kV DEADBREAK | DESCRIPTION  |
|---------------------------|-------------------|--|
| CAB10XLPE28KV100%IL1/3NC  | ELB-15/28-610C10  | 15/28kV Deadbreak Elbow, 25kV - 1/0 Insl OD 0.785"-0.970"  |
| CAB20XLPE28KV100%1/3NC    | ELB-15/28-610D20  | 15/28kV Deadbreak Elbow, 25kV - 2/0 Insl OD 0.910"-1.065"  |
| CAB40XLPE28KV100%IL1/3NC  | ELB-15/28-610E40  | 15/28kV Deadbreak Elbow, 25kV - 4/0 Insl OD 0.980"-1.114"  |
| CAB250XLPE28KV100%IL1/3NC | ELB-15/28-610F250 | 15/28kV Deadbreak Elbow, 25kV 250MCM- Insl OD 1.08"-1.28"  |
| CAB500XLPE28KV100%IL1/3NC | ELB-15/28-610G500 | 15/28kV Deadbreak Elbow, 25kV - 500MCM Insl OD 1.22"-1.42" |

*The connectors are not included, unless otherwise indicated.*