



A Sonepar Company

ONTARIO

Special deals
**July -
August
2020**



Valid for Electrical Contractors
ECAO and OEL members only

FOR YOUR SAFETY...



Forehead IR Thermometer

Non-contact, ideal for quickly detecting elevated body temperature. Non-contact design eliminates need for replacement probe covers and other supplies.

FLIIR200



Liquid Hand Cleaner/Sanitizer

70% alcohol - Citrus scent, slow evaporation. Safe for skin, with moisturizers and vitamin E. Ideal for cleaning hands.

350mL spray

WALFLSANIH70350ML

500mL spray

WALFLSANIH70500ML

3.78L (1 Gal.)

WALFLSANIH70378L



New products in stock at Lumen!



Adjustable Lumen Visor

Anti-splash, anti-fog.

Pack of 20 # LUMVISIERE



Level 1 Protection Mask

Easy to breathe through. Soft, odorless and non-irritating. Filters out bacteria, pollen, smoke and dust.



Pack of 50 # CANRML1



Antibacterial Fabric Mask

3-ply. Protects from droplets, dust and penetration of other hazardous bacteria. Lasts up to 30 rounds of laundry (or 3 months from the first use).

Pack of 5 # GERGLNMSKL



P100 Particulate Filter Cartridge

NIOSH approved for environments containing certain oil and non-oil based particles. Can be used in a variety of applications including welding, brazing, torch cutting, metal pouring, soldering, etc.

Pack of 2 # 3MS7093



Half Facepiece Reusable Respirator

Offers reliable and convenient respiratory protection. Comes with sealable storage bag.

Small # 3MS6100

Medium # 3MS6200

Large # 3MS6300



SecureFit™ Protective Eyewear

Clear anti-fog lens, protects against Ultraviolet (UV) radiation. Adjustable nose pads and soft-touch temple inlays provide increased comfort and improved grip. CSA Z94.3 Certified

3MSSF401AF



LED Surface Fixture - IP66

4 ft - 120/277V, 5 000LM

Replaces 2 x 32W, T8

4 000K # LITXVMLL485000LMMV4K80

5 000K # LITXVMLL485000LMMV5K80

Bluetooth



LED Shoplight

4 ft - 42W, 120V, 4 000K, 4 000LM

Two wireless speakers integrated, bluetooth connection, pull chain switch, acrylic lens, 5 ft cord with plug.

Replaces 2 x 32W, T8 fluorescent

LITSPSL48IN80CRI40KBL



LED Ceiling Fixture

2 ft - 80W, 120V, 4 000K, 5 000LM

Polycarbonate frosted lens, 360° passive infrared motion sensor, 5 ft power cord with plug and 18" suspension cables included.

Replaces 2 x 32W, T8

LITSGLL2440K80CRIPIR



LED Fixture for T-Bar

120/277V, square acrylic diffuser, volumetric distribution, dimmable

Replaces 2 x 32W, T8

2x2 - 3 300LM

3 500K # LITBLC2X23300LM35K

4 000K # LITBLC2X23300LM40K

2x4 - 4 000LM

3 500K # LITBLC2X44000LM35K

4 000K # LITBLC2X44000LM40K



LED Watertight Surface Fixture

120/277V, 6 ft white cord, frosted acrylic diffuser, medium distribution, dimmable.

2 ft - 15 000LM, IP66

Replaces 4 x 54W, T5HO or 6 x 32W, T8

4 000K # LITFHEL2415LMFSTMDMVGZ4K

5 000K # LITFHEL2415LMFSTMDMVGZ5K

4 ft - 18 000LM, IP67

Replaces 4 x 54W, T5HO or 6 x 32W, T8 or 400W, HID

4 000K # LITFHEL4818LMFSTMDMVGZ4K

5 000K # LITFHEL4818LMFSTMDMVGZ5K



LED Panel for T-Bar Ceiling

120/277V

1 x 4 - Adjustable lumen output 2 400/3 300/4 400LM

3 500K # LITCPANL1X4243344LM35K

4 000K # LITCPANL1X4243344LM40K

2 x 2 - Adjustable lumen output 2 400/3 300/4 400LM

3 500K # LITCPANL2X2243344LM35K

4 000K # LITCPANL2X2243344LM40K

2 x 4 - Adjustable lumen output 4 000/5 000/6 000LM

3 500K # LITCPANL2X4405060LM35K

4 000K # LITCPANL2X4405060LM40K



An Acuity Brands Company



Motion Detector Wall Switch

Passive infrared detection

800W, 120V, white

SENWSXWH

1 500W, 347V, white

SENWSX347WH

60-Minute Timer



800W/1 200W, 120/277V

SENPTS60WH

1 500W, 347V

SENPTS60WH347

12-Hour Timer



800W/1 200W, 120/277V

SENPTS720WH

1 500W, 347V

SENPTS720WH347



Plastic Pictogram Exit Sign

4.2W LED

EMEECUSU

LUMLCUSU



Plastic Pictogram Exit Combo Unit

2 x 1W LED heads

EMEECSC2LEDWR

LUMLCSC2LEDWR



Emergency LED Lighting Fixture Battery Unit

6V, 27W, 2 x 4W LED heads

EME06JMLC272BLDC

LUMRGC272BLDC

**T5
HO**



PHILIPS

Linear LED Tube

48 in - 24W, 120/277/347V

Made of polycarbonate

Replaces 54W, fluorescent

3500K, 3300LM # PHI24T5LEDHO483500IF

4000K, 3500LM # PHI24T5LEDHO484000IF

5000K, 3500LM # PHI24T5LEDHO485000IF

KEENE

by @ignify



LED Wall Pack

120/277V, 4000K, bronze

Replaces up to 70W, HID

30W, 3383LM # KEEWP30NWG18BZ

Replaces up to 100W, HID

50W, 5695LM # KEEWP50NWG18BZ

Replaces up to 250W, HID

75W, 9212LM # KEEWP75NWG18BZ

KEENE

by @ignify



LED Wallpack

40W, 120V, 4000K, 4973LM, gray, photocell included, wall mount, mounted to vertical surfaces or mounted onto 1-1/2" O.D. arms (sold separately).

Replaces up to 150W, HID

KEEDTD40NWG3AR5TLRPC1GY3

KEENE

by @ignify



LED Wall Pack

12W, 120V, 3000K, 1100LM, photocell included, bronze finish, wall mount with galvanized mounting plate, frosted polycarbonate lens.

Replaces up to 70W, HID

KEELWLWWG2PCB1BZ

KEENE

by @ignify



LED Wall Pack

13W, 120V, 3000K, 1200LM, photocell included, bronze finish, wall mount with galvanized mounting plate, frosted polycarbonate lens.

Replaces up to 70W, HID

KEESWLWWG1PCB1BZ

Day-Brite

CFI

by @ignify



LED High Bay Fixture

IP65 - 161W, 120/277V, 4000K, 20720LM, dimmable 0-10V, hook included, general distribution.

Replaces up to 400W, MH

CFHHCX22L840UNVDIM

Day-Brite

CFI

by @ignify



High Bay Fluorescent Fixture

With 6 ft cord (lamps not included)

120/277V - 4 x F54T5HO

CFISHE454UNVCORD

347V - 4 x F54T5HO

CFISHE454347VCORD

120/277V - 6 x F54T5HO

CFISHE654UNVCORD

347V - 6 x F54T5HO

CFISHE654347VCORD

Day-Brite

CFI

by @ignify



Linear Strip Fixture

1 x F54T5HO (lamps not included)

347V

CFISV4S154347VCT

Double tandem

2 x F54T5HO (lamps not included)

347V

CFISV8S154347CT

Day-Brite

CFI

by @ignify



Linear Strip Fixture

2 x F54T5HO (lamps not included)

120/277V # CFISV4S254UNV1/2EB

347V # CFISV4S254347PG

Double tandem

4 x F54T5HO (lamps not included)

120/277V # CFISV8S254UNVPV

347V # CFISV8S254347PV

LUTRON.

LED Dimmer

Compatible with : incandescent, halogen, CFL, single and 3-way dimmer

SKYLARK SERIES



White

LUTSCL153PHWHC

SKYLARK SERIES



White

LUTCTCL153PWH

DIVA SERIES



White

LUTDVCL153PHWHC

ONTARIO - Effective from July 1st to August 31st 2020



lumen

3


LED EDGELIT Surface Fixture

120V, 3000K, white border

6 in - 11W, 855LM

STALEDCLE6DG11W3KFMNRNDWH

8 in - 14W, 1066LM

STALEDCLE8DG14W3KFMNRNDWH


LED Surface Fixture

120V, 3000K, white border, dimmable

6 in - 10W, 600LM

LUMLULEDCL610W3KRND

11 in - 15W, 1050LM

LUMLULEDCL1115W3KRND

Suitable
for damp
location


LED Ceiling Fixture

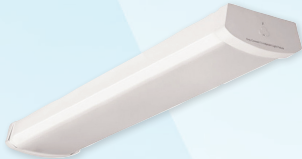
With motion sensor

7 in - 12W, 120V, 4000K, 868LM

Frosted polycarbonate lens, flush mount, non-dimmable, white finish.

Replaces 65W, incandescent

STACLEL7MS12W40KRNDWH


LED Wraparound Surface Fixture

120/277V, 4000K, frosted polycarbonate lens

2 ft - 27W, 2878LM, Replaces 1 x 32W, T8

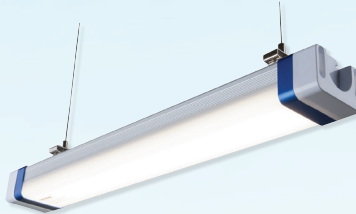
Interconnectable up to 15 units

STAL2WMG241

4 ft - 47W, 5043LM, Replaces 2 x 32W, T8

Interconnectable up to 8 units

STAL2WMG481

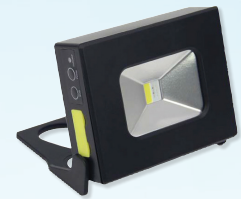

LED Surface Fixture - IP66

4 ft - 40W, 120/277V, 4000K, 4900LM.

Corrosion, dust and impact (IK10) resistant, interconnectable, non dimmable.

Replaces 2 x 32W, T8 fluorescent

STALSVS40W4FT40K2NDFPL


LED Mini Portable Projector

10W, 100/240V, 450LM, 120° beam, lithium-ion 3.7V 2AH battery working time is 2 hours (100%) or 4 hours (energy saving mode), 2 intensity switch, flashing switch, magnetic handle, black housing.

STAMFLBTRYMG10024010WCW


Portable LED Projector

120V, 20W, 1100LM, 120° beam, battery autonomy of 3 hours at 100% luminosity and 12 hours at 20% luminosity.

STAPFLBTRY10024020WCWYLS


Portable LED Projector

50W, 120V, 3250LM, 120° beam, battery autonomy of 3 hours at 100% luminosity and 12 hours at 20% luminosity.

STAPFLBTRY10024050WCWYLS


LED Projector

120V, 4000K, arm mount, black

10W, 1069LM - Replaces 50W, HID

STAF10W40KKNBKCCHOICESTD

20W, 1870LM - Replaces 70W, HID

STAF20W40KKNBKCCHOICESTD

30W, 3191LM - Replaces 100W, HID

STAF30W40KKNBKCCHOICESTD

50W, 5397LM - Replaces 175W, HID

STAF50W40KKNBKCCHOICESTD


LED Recessed Fixture

3000K, recessed, round, dimmable, white (also available in black or satin nickel).

2 in - 8W, 600LM

DALRGR23KWH

4 in - 14W, 990LM

DALRGR43KWH


LED Gimbal Recessed Fixture

3000K, round, dimmable, white (also available in black or satin nickel).

3 in - 8W, 600LM

DALLEDDOWNG3WH

4 in - 8W, 600LM

DALLEDDOWNG4WH


2-in-1 LED Puck

12V, 2.1W, 3000K, 90LM

Recessed or surface mounted, 24" interconnection harness included, frosted glass lens, 12V DC - LED driver required (sold separately)

Black # DAL4005FRBK

Pewter # DAL4005FRSN

White # DAL4005FRWH



Connector

**STAR
TECK**

1/2 in - 0.525 - 0.65
THOST050462

1/2 in - 0.6 - 0.76
THOST050464

1/2 in - 0.725 - 0.885
THOST050465

1/2 in - 0.825 - 0.985
THOST050466

3/4 in - 0.880 - 1.065
THOST075467

3/4 in - 1.025 - 1.205
THOST075468

1 in - 1.187 - 1.375
THOST100469



Copper Lay-In Lug Connector

- Open-faced design enables installer to quickly lay-in grounding conductor as jumper to multiple conduits with no break in ground conductor
- Ideal for swimming pool grounding applications
- Carries "DB" marking for direct burial

BLACULL414TP



Accessories



Strain relief connector
c/w 6 grommets 3/4"
SCESRC15A



Cement c/w applicator cap,
250 ml
SCES100PT5



1/2"
SCEOPEJ10
3/4"
SCEOPEJ15

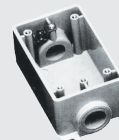
Octagonal Box



4 x 1-1/2" (1/2" x 3/4" HUB)
SCEOB1510



1/2"
SCEFS10
3/4"
SCEFS15



1/2"
SCEFSC10
3/4"
SCEFSC15

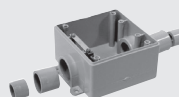
F-Series Universal Boxes - Double Gang



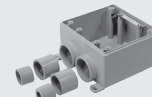
No opening
SCEFDU2



1/2", 3/4" and 1"
SCEFSU2101520



1/2", 3/4" and 1"
SCEFSCU2101520



1/2", 3/4" and 1"
SCEFSSU2101520

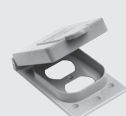
Weatherproof Covers - Single Gang



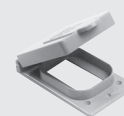
Toggle switch cover
SCEVSC1510



Plunger style switch
SCEVPT1510

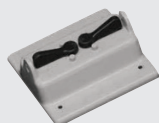


Duplex - gray receptacle
SCEWDR1510



Ground fault - gray receptacle
SCEWGF1510

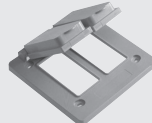
Weatherproof Covers - Double Gang



Toggle switch cover
SCEVSCU202



Double door duplex cover
SCEVSDD202



Double door GFCI cover
SCEVSGG202



Combination switch cover
& GFI receptacle
SCEVSRUCU202



Pro Series Portable Inverter Generator

2500W # WES02503



Remote Electric Start Portable Generator

7500W # WES07501



Remote Electric Start Portable Generator

9500W # WES09501



Gasoline Portable Generator

3600W # WES03602



Dual Fuel Portable Generator

3600W # WES03611



Dual Fuel Portable Generator

7500W # WES07512



Decorator Commercial Series

Duplex Receptacle

Switch



15A, 120/277V, 1P
HUBDS115W

20A, 120/277V, 1P
HUBDS120W



15A, 120/277V
1P, 3-way
HUBDS315W

20A, 120/277V
1P, 3-way
HUBDS320W



15A, 125V
HUBDR15WHI



15A, 125V, 10 000 cycles
A & C USB ports
HUBUSB15AC5W



15A, 125V, 10 000 cycles,
5A USB port
White # HUBUSB15A5W
Black # HUBUSB15A5BK



20A, 125V
HUBDR20WHI



20A, 125V, 10 000 cycles
A & C USB ports
HUBUSB20AC5W



20A, 125V, 10 000 cycles
5A USB port
White # HUBUSB20A5W
Black # HUBUSB20A5BK

LEVITON



Multi-Tech Occupancy Sensor

800W, 120/277V, single pole, 180° field of view, 800W incandescent. Wallplate not included.

LEVOSSMTMDW



Occupancy Relay Sensor

15A, 120V, single pole or 3-way when used with a 3-way switch, 180° field of view, 600W LED/CFL and 1800W incandescent/halogen. Wallplate not included.

LEVIPS151LZ



Dimming Occupancy Sensor

2.5A, 120V, single pole or 3-way when used with a 3-way switch, 180° field of view, 150W LED/CFL and 600W incandescent/halogen. Wallplate not included.

LEVIPSD61LZ



Humidity Sensor and Fan Control

150W LED/CFL, 600W incandescent, 400VA inductive/ballast, 1/6th HP motor, single pole. Wallplate not included.

LEVIPHS51LW



Occupancy Sensor

800W, wall switch with passive infrared detector and auto-tuning. Wallplate not included.

LEVODS10IDW



Multi-Technology Ceiling Sensor

120/277V, line voltage, 2000 ft² range, photocell included.

LEVODC20MDW

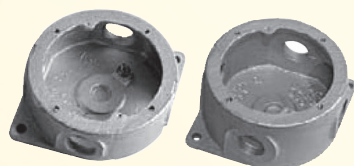
 **Appleton**



Cover for Junction Box

Round, aluminum

APPCBA



4-Hole Junction Box

1-1/2" depth

1/2" # APPBKXS1A

3/4" # APPBKXS2A

2-1/4" depth

1/2" # APPBKXM1A

3/4" # APPBKXM2A

Electric Vehicle

Energy

Management

System

Speak to a representative
at your local branch

DCC

by **rve**



DCC-9

RVEDCC940A

Standard equipment for
EV charging installations
in multi-unit buildings.

dcelectric.com

Used in single-family homes
when the panel is at capacity.



DCC-10

RVEDCC1040A

ONTARIO - Effective from July 1st to August 31st 2020



lumen

7

SIEMENS



Surge Arrester Breaker
Full module, c/w 2-1 pole 10 000 A.I.C.
SIEQSA1515SPD



FirstSurge Protective Device
Rated 120/240V, split phase (up to 400A) at 50/60Hz, surge spike capacity 60kA, less than 1 nanosecond response time, NEMA 4X enclosure.
SIEFS060



Electrical Panel SPA Kit
120/240V - NEMA 3R.

- 20A # SIEW0408ML112520
- 30A # SIEW0408ML112530
- 40A # SIEW0408ML112540
- 50A # SIEW0408ML112550
- 60A # SIEW0408ML112560



Water Heater For Above Ground Pool



Mechanical

15 ft pool, 5kw, 240V
5 200 gallons, 17 060 BTU/hour
VALC55KW

18 to 21 ft pool, 10kw, 240V
7 600-10 400 gallons, 34 120 BTU/hour
VALC1010KW

24 to 27 ft pool, 15kw, 240V
13 500-17 200 gallons, 51 180 BTU/hour
VALC1515KW



Digital

15 ft pool, 5kw 240V,
5 200 gallons, 17 060 BTU/hour
VALC5KW240DIGIT

18 to 21 ft pool, 10kw, 240V
7 600-10 400 gallons, 34 120 BTU/hour
VALC10KW240DIGIT

Together, let's provide EV charging stations tailored to the needs of your customers

Available at Lumen



Residential



FLO Home™ X5
240 V | 30 A | 7.2 kW

Reliable and smart
For single-family homes

FLO Home™ G5
240 V | 30 A | 7.2 kW

Rugged and durable
For single-family homes
Non-connected



CoRe+™
208 V or 240 V | 30 A | 7.2 kW

Versatile Level 2
charging station
Ideal for workplace



Commercial

SmartTWO™
208 V or 240 V | 30 A | 7.2 kW

Sturdy, durable Level 2
charging station
Connected and secure
locked connector
Designed for public
or commercial applications



Aluminum casing



Safe



Made in Canada



Certification



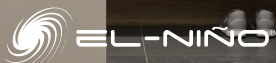
Indoor or outdoor installation

flo.ca

°STELPRO

REPLACING PAPER HAND TOWELS WITH AN ELECTRIC HAND DRYER DELIVERS:

- Significantly reduced bacteria growth on wet paper.
- Maintenance and cleaning cost savings.
- Increased cleanliness - no more wet paper in the trash and on the floor.



EL-NIÑO HAND DRYER - ELN series

ELNV0901AW	120 V	White
ELNV0901ABC	120 V	Brushed chrome
ELNV0908AW	208 V	White
ELNV0908ABC	208 V	Brushed chrome
ELNV0902AW	240 V	White
ELNV0902ABC	240 V	Brushed chrome

LA-NINA HAND DRYER - LAN series



LANV1200AW	120/208/240 V	White
LANV1200ABC	120/208/240 V	Brushed chrome

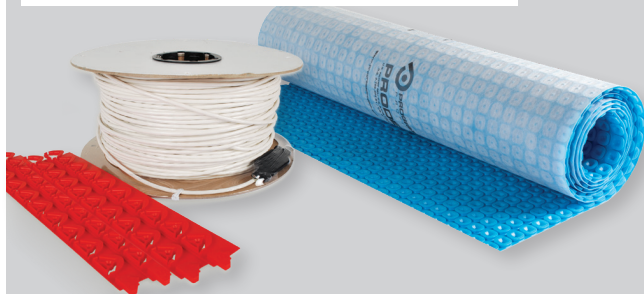
XLERATOR HAND DRYER - SHDXL series



XLERATOR

SHDXLAS1BW	120 V	White polymer BMC
SHDXLAS1W	120 V	White
SHDXLAS1GR	120 V	Graphite
SHDXLAS1CH	120 V	Chrome
SHDXLAS1SS	120 V	Stainless steel
SHDXLAS2BW	208/240/277 V	White polymer BMC
SHDXLAS2W	208/240/277 V	White
SHDXLAS2GR	208/240/277 V	Graphite
SHDXLAS2CH	208/240/277 V	Chrome
SHDXLAS2SS	208/240/277 V	Stainless steel

UNIVERSAL HEATING CABLE - SCU series



CABLE

SCU2W0270S025
SCU2W0338S030
SCU2W0405S036
SCU2W0475S042
SCU2W0540S047
SCU2W0675S058

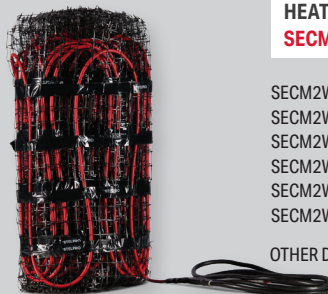
MEMBRANE

SCUMEM054
SCUMEM162

OTHER DIMENSIONS AVAILABLE



HEATING CABLE ON LATTICE FOR CONCRETE - SECM series



SECM2W0300S025
SECM2W0400S033
SECM2W0500S042
SECM2W0600S050
SECM2W0750S063
SECM2W0850S071

OTHER DIMENSIONS AVAILABLE

EASIER TO INSTALL AND USE
THAN A HYDRONIC SYSTEM



NON-PROGRAMMABLE THERMOSTAT FOR FLOOR HEATING - STCNP



STCNPW5

PROGRAMMABLE THERMOSTAT FOR FLOOR HEATING - STCP



STCPW5



BEST
MANAGED
COMPANIES

1-844-STELPRO www.stelpro.com



ONTARIO - Effective from July 1st to August 31st 2020





DC Dimplex

1500W DIMDIR15AGR
1800W DIMDIR18AGR
2200W DIMDIR22AGR
3000W DIMDIR30AGR

Warmer. Quicker.

The DIR patio heaters are now available in 3000W.

Weatherproof (IP65 rating), it operates in temperatures as low as -40°C.
Get your customers ready for cool nights... really cool!

CONVECTAIR

Innovations.
Differences.
Performances.

1-800-463-6478 | www.convectair.ca



ENGINEERED FOR LONG LASTING COMFORT



Performance starts with well researched materials.
All angles of design are studied for best efficiency.
More savings with functions that adapt to your presence.

Treat **your clients** to the Convectair difference.
Install **comfort** that is engineered to last.

1-800-463-6478
www.convectair.ca

CONVECTAIR

Innovations.
Differences.
Performances.

Honeywell



People Counting Camera

Dome, 1080P, 2MP, WDR H.265

HONH2W2PC1M



Ball Type IP Camera

4MM, IR H.264/5 PoE, IP66

HONHED8PR1



Dome IP Camera

TDN, 4MM, IR, H.264/5. PoE. IP66

HONH4D8PR1

Hyperline

CABLING SYSTEMS

Category 6 Patch Cord



To complete the product code, replace the **red** asterisk (*) with the **length** and the **blue** asterisks (**) with the **2 letter color code**.

UTP cord # HYPPCUTPRJ45C6*F**

STP cord # HYPPCSTPRJ45C6*F**

Length
1 (1 ft)
3 (3 ft)
5 (5 ft)
7 (7 ft)
10 (10 ft)
15 (15 ft)
25 (25 ft)

Available colors						
Yellow YL	White WH	Blue BL	Gray GY	Black BK	Red RD	Green GN



LAPP

Lapp Canada, your single source for automation cable, industrial connectors, cable assemblies and accessories.

- Machinery cable for all types of application (stationary, continuous flexing, and torsional)
- CSA TC FT4 rated cable for tray applications
- VFD & servo cable for all leading manufacturers
- Bus cable and industrial Ethernet cable for signal, network, and control
- Rectangular & circular connectors, cable chain, and protective conduit
- High-quality metallic & non-metallic strain relief cable glands
- Cable management accessories

Milwaukee



M12™ Compact Inflator

High efficiency motor delivers over 120PSI.

Includes: Ball Inflation Needle, Presta Chuck, Schrader Chuck and Inflator Nozzle. Battery and charger sold separately.

MIL247520



M18™ Jobsite Fan

Circulates air over 40 feet, ideal for drying or cooling.

Includes: AC adaptor for extended run-time.

*17 hours with a M18 REDLITHIUM XC 5.0 battery (batteries and charger sold separately).

MIL088620



Cordless Lithium-Ion Band Saw Kit

Includes: band saw (tool only), M18™ & M12™ multi-voltage charger, two M18™ REDLITHIUM™ XC extended capacity batteries and carrying case.

MIL262922



M12™ Cordless Cable Stripper

No exposed blades and battery-powered. **Includes:** 11 bushings for aluminum THHN and RW90 cables, one M12™ REDLITHIUM™ CP2.0 battery, an M18™ & M12™ multi-voltage charger and a carrying case.

MIL2435AL21



M18™ FORCE LOGIC™ Cable Cutter Kit

Powers through 750 MCM copper or 1000 MCM aluminum 2x faster than the leading competitor. **Includes:** M18™ REDLITHIUM™ CP2.0 battery, M18™ & M12™ multi-voltage charger, Allen Key, M18™ 750 MCM Cable Cutting Jaw and carrying case.

MIL267221



M18™ Compact Heat Gun

6.4" long. Heats up 30% faster than corded guns. Reaches operational temperature in less than 7 seconds. **Includes:** 1x M18 RedLithium XC5.0 battery, multi-voltage charger, 2x nozzles and carrying case.

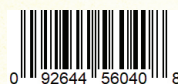
MIL268821

KLEIN TOOLS



Flashlight with Laser

Rechargeable focus, bright 350 lumens for up to 12 hours.



KLE56040



Laser Line Bubble Level

Projects a bright, crisp laser line and spot parallel to the base of the level up to 75 ft. (22.9 m).



KLELBL100



Digital Angle Gauge With Level

Measure or determine angles, check relative angles, or can be used as a digital level.



KLE935DAG



Set of 11 Folding Hex Keys

Includes: 1/2, 3/8, 5/16, 1/4, 7/32, 3/16, 5/32, 9/64, 1/8, 7/64, 3/32 in.

KLE70550



Rechargeable Battery

13400mah, for construction site. **Includes:** USB Type-C to USB Type-A Cable.

KLEKTB2



Shear-Cut Heavy-Duty Wire Stripper

Requires lower force to cut copper wire and larger cable such as Romex®. Updated design features six stripping holes for 8-18 AWG solid and 10-20 AWG stranded wire.

KLEK12035



Carbide Cutter Set

7 pieces. Cuts stainless steel quickly and easily.
Includes: 7/8", 1-1/8", 1-3/8", 1-3/4" and 2".

GRE660



Storage Box

24 in x 48 in x 24 in (capacity of 16 feet³)

GRE2448



7-Piece Drill/Tap Bit Kit

For stainless steel. Includes: 6-32, 8-32, 10-24, 10-32, 12-24, 1/4-20.

Standard

GREDTAPSSKIT

Metric

GREDTAPSSKITM



Replacement Fishtape

Steel (No case)

125 ft x 1/8 in

GRERS438125

240 ft x 1/8 in

GRERS438240



Versi-Tugger™ Cable Puller

Handheld 1 000 lb puller. Universal, one-size-fits-all pulling head attaches quickly to any size conduit from 1/2" to 4". Works most 18V-20V cordless drills (not included).

GREG1



TUGGER™ Cable Puller

120V, 12A. Pulls up to 2 000 lbs of cable 20% faster, 25% stronger continuous pulling load, high speed of 97ft/min and low speed of 41ft/min.

GREG3

FLUKE



Ti300+ PRO Thermal Camera

60 Hz. 320 x 240px resolution, 2 meter drop test, LaserSharp™ auto focus, manual or automatic focus, measures temperatures from -20°C to 650°C.

FLUTi300



RMS Clamp Meter

Combines general electrical measurements with temperature and capacitance to create one solid troubleshooting tool. CAT III 600V, CAT IV 300V.

FLU324



True-RMS Digital Multimeter

Cat III, 600V safety rated, 10A AC/DC current measurement (20A overload for 30-seconds max.), LED backlight, min/max/average to record signal fluctuations, measures resistance, continuity, frequency and capacitance.

FLU115EFSP



T5-1000 Tester

Voltage, continuity and current tester. Excellent front-line troubleshooting and measurement tool (1 000V, CAT III).

FLUT51000

FLIR



Non-Contact Voltage Detector & Worklight

Tough CAT IV-rated featuring a combination of alerts - tactile vibration and red LED alarms, a powerful LED flashlight, and versatile voltage sensitivities.

FLIVP50



Infrared Window

Outside diameter: 3.9 in
3 in # FLI19251100

Outside diameter: 5.01 in
4 in # FLI19252100



CAT Waterproof-Dustproof Rugged Smartphone

With integrated Flir thermal imagery camera



WASHABLE: waterproof up to 5m for 60 minutes. Drop proof up to 1.8m strengthened die cast frame. Screen: 4.7" Corning® Gorilla® Glass 4. Battery: 3800mAh, 1year warranty.

MOTCATS60



WASHABLE: waterproof up to 3m for 60 minutes. Drop proof up to 1.8m. Air Quality Sensor and Laser measurement. Screen: 5.2" Corning® Gorilla® Glass 5. Battery: 4500mAh, 2 years warranty.

MOTCATS61

SAF/EST



NEW SAF/EST APP

detects abnormal body temperatures.



© 2020 Caterpillar. All Rights Reserved. CAT, CATERPILLAR, BUILT FOR IT, their respective logos, "Caterpillar Yellow", the "Power Edge" trade dress as well as corporate and product identity used herein, are trademarks of Caterpillar and may not be used without permission. Bullitt Mobile Ltd is a licensee of Caterpillar Inc. All other trademarks, trade names, product names and logos are the property of their respective owners. Any rights not expressly granted herein are reserved.



Multifunctional pliers

For electrical installation. 6 functions in one pair of insulated pliers.

KNI13888US



High-Leverage Diagonal Cutter Pliers

Includes: 6-1/4", 8" and 10".

KNI002005US



Tool-Check PLUS - 39 PC Kit

With 1/4" wrench, rapidaptor bit holder, 1/4" adapter and socket.

Metric # WER056490

Imperial # WER056491



Kraftform Kompakt Pouch

17-piece set, 60 RA, imperial, 89 mm bits.

WER051041



ATTENTION

LIGNE ELECTRIQUE ENFOUIE
ELECTRIC LINE BURIED BELOW



Yellow Barricade Tape "ELECTRIC LINE BURIED BELOW"

3 in x 1000 ft.

BRAYT3



BASIC® Tampons

15 in x 17 in - Liquids absorbed:
oil, coolant, solvent and oil-based fluid.

Pack of 100 # BRABPO100



Economy Spill Kit

Absorbs up to 5 gallons per kit. **Includes:** 10 pads (15 in x 19 in), 2 socks (3 in x 4 ft), nitrile gloves, disposal bag and instruction sheet.

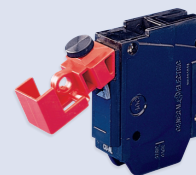
BRASKAPP



Electric Plug Lockouts

Constructed of rugged polypropylene,
Small 110V plugout.

BRA65674



Clamp-On Breaker Lockout

Extremely versatile - works on a wide range of
single-pole and internal-trip multi-pole breakers.

120/277V # BRA65396

480/600V # BRA65397



Fire Barrier Sealant IC 15WB+

10.1 fl. oz. (298 mL).
Firestop tested up to 3 hours.

TROIC15WB+10.1OZ



Fire Barrier Sealant CP 25WB+

10.1 fl. oz. (298 mL).
Firestop tested up to 4 hours.

TROCP25WB+10.1OZ



Construction-Style Positioning Harness

Back and side D-rings, shoulder/hip padding, tongue-buckle leg connection, pass-thru chest connection.

Medium / large # DBI1161309C



UltraFit Corded Earplugs

Noise reduction rating: 25dB

Box of 100 # 3MS3404004



Temflex™ General Purpose Vinyl

1-1/2 in x 60 ft insulation Tape. .

TROTEMFLEX11/2X66



Linerless Rubber Splicing Tape

30 mil. 130C, black.

3/4 in x 30 ft

TRO130C3/4X30

1-1/2 in x 30 ft

TRO130C11/2X30

INDUSTRIAL SCIENTIFIC



Ventis MX4 Gas Detector

LEL, O2, CO, H2S, lithium-ion battery, desktop charger.

ISCVTSK1231100101



Ventis Pro5 Multi-Gas Monitor

Peer-to-peer alarm sharing, remote live monitoring with location details, detects up to five gases simultaneously: LEL (pent), O2, CO, H2S, li-ion. Desktop charger, LENS™ wireless network.

ISCV5K1231100111



DSXi Cloud-Connected Docking Station

Easily maintains the gas detectors that keep your people safe in hazardous environments. 3 gas inlet ports.

ISC18109327131



PowerFlex® Cut-Resistant Gloves

The first glove to combine high levels of flame resistance, arc flash and cut protection. EN 407 Level 4 resistance to flammability, Category (HRC) 2 for Arc Flash Protection and EN388 Cut Protection level 5 (ANSI Cut Protection level 4).

X-Small	# EDM808136
Small	# EDM808137
Medium	# EDM808138
Large	# EDM808139
X-Large	# EDM8081310
XX-Large	# EDM8081311



HyFlex® Gloves with Cut Protection Technology™

Offers the dynamic mix of protection, durability, and comfort. Polyurethane coating provides ANSI level 5 abrasion protection and level 2 cut protection.

X-Small	# EDM116446
Small	# EDM116447
Medium	# EDM116448
Large	# EDM116449
X-Large	# EDM1164410
XX-Large	# EDM1164411

Practiced in all our branches for
everyone's health and safety!

DISINFECTION
of hands is mandatory

2 METERS
of social distance

PLEXIGLAS
installed at counters

To limit the waiting time in our branches, place your
orders directly online at lumen.ca or by phone.



Mobile application

◀ Look for the Lumen icon!



LEARN MORE:
lumen.ca/app



Two branches to better serve Ottawa and Eastern Ontario!

OTTAWA EAST

1000, Belfast Road, Ottawa (ON) K1G 4A2

Tel.: 613 789-7500 / **Fax:** 613 789-7501

Toll free: 1 855 589-7500

OTTAWA WEST

1050, Baxter Road, Ottawa (ON) K2C 3P1

Tel.: 613 828-2930 / **Fax:** 613 828-2972

Toll free: 1 888 491-2930



Prices are subject to change without notice. All promotions are valid from **July 1st to August 31st 2020** while supplies last.
All images are for illustrative purposes only. Air Miles program is reserved to the Electrical Contractor ECAO or OEL members only.

