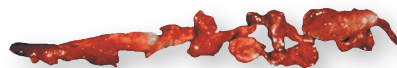


Fogarty® Clot Management Catheters

Reference guide



Fogarty Corkscrew catheter

- For extracting thrombus that is too resistant for an elastomeric balloon
- Used to dislodge adherent material in native vessels and synthetic grafts
- Corkscrew design increases the surface area for entrapping fibrous material
- Radiopaque and flexible

Fogarty Corkscrew catheter

Catheter	End cap label	Model	Size
Corkscrew catheter	ACC 4/6	140806	4F x 6 mm x 80 cm
Corkscrew catheter	ACC 5/8	140808	5F x 8 mm x 80 cm
Corkscrew catheter	ACC 6/10	1408010	6F x 10 mm x 80 cm



Fogarty graft thrombectomy catheter

- Designed for removing organized and adherent thrombus from synthetic grafts
- Provides a larger diameter range than the Fogarty Corkscrew catheter
- The pulling force can be varied by adjusting the diameter

Fogarty graft thrombectomy catheter

Catheter	End cap label	Model	Size
Graft thrombectomy catheter	GT 5	160245F	5F x 16 mm x 50 cm
Graft thrombectomy catheter	GT 6	160246F	6F x 18 mm x 50 cm



Edwards

Fogarty® clot management catheters

Model	Usable length (cm)	Catheter Size (F)	Membrane/spiral diameter max. extended (mm)	Membrane/spiral diameter max. retracted (mm)
Fogarty Corkscrew catheters				
140806	80	4	2.7	6
140808	80	5	3.1	8
1408010	80	6	3.3	10
Fogarty graft thrombectomy catheters				
160245F	50	5	5.0	16
160246F	50	6	6.0	18

Model	Usable length (cm)	Catheter size (F)	Inflated balloon diameter (mm)	Max. size of deflated balloon (F)	Usable length (cm)	Max. liquid capacity (ml)	Max. recommended pull force (lbs.)	Compatible introducer (F)	Compatible guidewire (in.)
Fogarty arterial embolectomy catheters (tube pack)									
120602F	60	2	4	3.4	0.2	–	0.5	3.5	–
120403F	40	3	5	4.3	0.6	0.20	0.7	4	–
120803F	80	3	5	4.3	0.6	0.20	0.7	4	–
120404F	40	4	9	5.0	1.7	0.75	1.5	5	–
120804F	80	4	9	5.0	1.7	0.75	1.5	5	–
120805F	80	5	11	6.0	3.0	1.50	2.0	6	–
120806F	80	6	13	7.0	4.5	2.00	2.5	7	–
120807F	80	7	14	8.0	5.0	2.50	3.5	8	–
Fogarty arterial embolectomy catheters (flat pack with syringe)									
12A0602F	60	2	4	3.4	0.2	–	0.5	3.5	–
12A0403F	40	3	5	4.3	0.6	2.0	0.7	4	–
12A0803F	80	3	5	4.3	0.6	2.0	0.7	4	–
12A0404F	40	4	9	5.0	1.7	0.75	1.5	5	–
12A0804F	80	4	9	5.0	1.7	0.75	1.5	5	–
12A1004F	100	4	9	5.0	1.7	0.75	1.5	5	–
12A0805F	80	5	11	6.0	3.0	1.50	2.0	6	–
12A0806F	80	6	13	7.0	4.5	2.00	2.5	7	–
12A0807F	80	7	14	8.0	5.0	2.50	3.5	8	–
Fogarty Fortis arterial embolectomy catheters									
120404FF	40	4	9	5.0	1.7	0.75	–	5	–
120804FF	80	4	9	5.0	1.7	0.75	–	5	–
Over-the-wire Fogarty thru-lumen embolectomy catheters									
12TLW403F	40	3	5	4.5	0.4	0.15	0.7	4.5	0.018
12TLW803F	80	3	5	4.5	0.4	0.15	0.7	4.5	0.018
12TLW1203F	120	3	5	4.5	0.4	0.15	0.7	4.5	0.018
12TLW404F	40	4	9	5.0	1.2	0.50	1.5	5	0.025
12TLW804F	80	4	9	5.0	1.2	0.50	1.5	5	0.025
12TLW405F35	40	5.5	11	6.0	1.7	0.90	2.0	6	0.035
12TLW805F35	80	5.5	11	6.0	1.7	0.90	2.0	6	0.035
12TLW406F	40	6	13	7.0	2.3	1.40	2.5	7	0.035
12TLW806F	80	6	13	7.0	2.3	1.40	2.5	7	0.035
12TLW807F	80	7	14	8.0	2.8	1.60	3.5	8	0.038
Fogarty venous thrombectomy catheters									
320806F	80	6	12	7.7	3.0	1.50	–	–	–
320808F	80	8	13	8.8	4.5	2.25	–	–	–
32080810F	80	8	19	10.0	8.0	4.00	–	–	–
Fogarty irrigation catheters									
220804F	80	4	–	–	–	–	–	–	–
220806F	80	6	–	–	–	–	–	–	–
2202310F	23	10	–	–	–	–	–	–	–

Genuine Fogarty catheters are available exclusively from Edwards Lifesciences. To learn more, visit edwards.com/fogarty or call 1-800-FOGARTY.

For professional use. CAUTION: Federal (United States) law restricts this device to sale by or on the order of a physician. See instructions for use for full prescribing information, including indications, contraindications, warnings, precautions and adverse events.

Edwards, Edwards Lifesciences, the stylized E logo, Fogarty, Fogarty Corkscrew, Fogarty Fortis, and 1-800-FOGARTY are trademarks or service marks of Edwards Lifesciences Corporation or its affiliates. All other trademarks are the property of their respective owners.

© 2020 Edwards Lifesciences Corporation. All rights reserved. PP- -US-0723 v2.0

Edwards Lifesciences • One Edwards Way, Irvine CA 92614 USA • edwards.com

