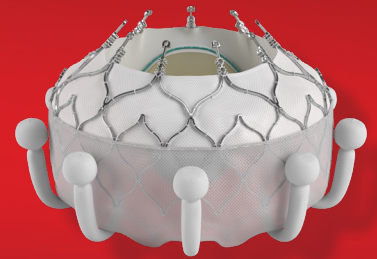


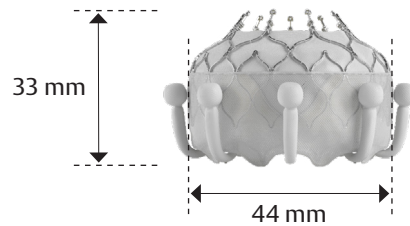
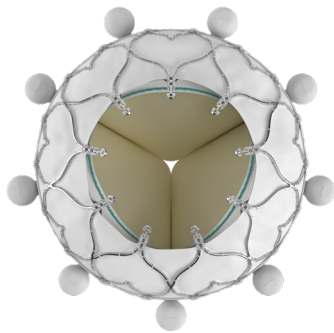
Edwards EVOQUE Tricuspid Valve Replacement System Technical Specifications



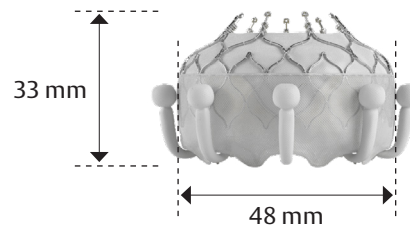
1 EVOQUE Valve

Reference
Number

Top of valve

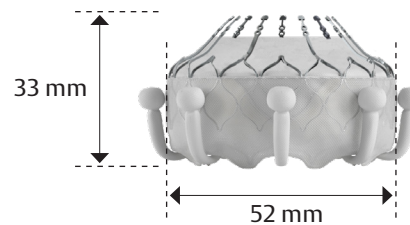
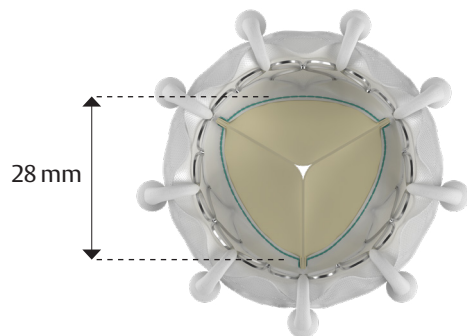


9850EV44

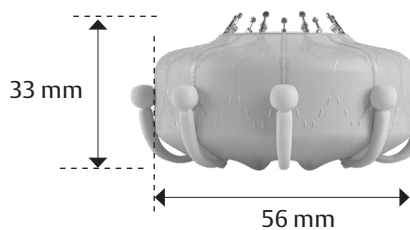


9850EV48

Bottom of valve



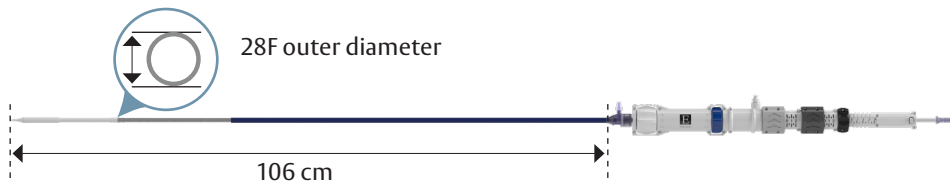
9850EV52



9850EV56

2 Delivery System

Reference Number



9850TDS

3 Dilator Kit

Reference Number

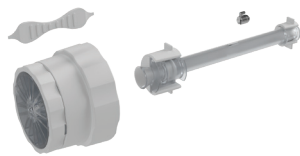


9850DK

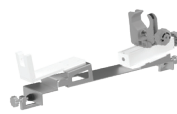
EVOQUE Accessories Set 1

4A Loading System

5A Accessories



Reference Number 9850LS



9850SB
Stabilizer



9850BA
Base



9850PT
Plate

EVOQUE Accessories Set 2

4B Loading System

5B Accessories



Reference Number 9850LSB



10000UP
Reusable Platform



10000PT
Reusable Base



9850SZ
Stabilizer



10500RL
Reusable Rail



TRAY10500RL
Rail Tray

EVOQUE System Ordering Information with Accessories Set 1

Bundle Code	Box Description	Box Components	
9850EVQSYS44	Sterile Devices Box	EVOQUE valve, 44mm	+ Delivery System Loading System* Dilator Kit Stabilizer
9850EVQSYS48		EVOQUE valve, 48mm	
9850EVQSYS52		EVOQUE valve, 52mm	
9850EVQSYS56*		EVOQUE valve, 56mm	
9850EVQACC	Non-Sterile Box	Base and Plate	

*For 9850EVQSYS56, the loading system is 9850LSB only

EVOQUE System Ordering Information with Accessories Set 2

Bundle Code	Box Description	Box Components	
9850EVQ1A2EU44	Sterile Devices Box	EVOQUE valve, 44mm	+ Delivery System Loading System Dilator Kit Stabilizer
9850EVQ1A2EU48		EVOQUE valve, 48mm	
9850EVQ1A2EU52		EVOQUE valve, 52mm	
9850EVQ1A2EU56		EVOQUE valve, 56mm	

EVOQUE System Specifications

Component	Dimension
Delivery System	
Total working length, Delivery System with Integrated Sheath	106.0 cm
Outer diameter (OD), Delivery System with Integrated Sheath	9.3 mm/28F
Dilator Kit	
Total working length, Dilator (24F, 28F, 33F)	40 cm
Proximal outer diameter (OD), Dilator (24F)	8.0 mm
Proximal outer diameter (OD), Dilator (28F)	9.3 mm
Proximal outer diameter (OD), Dilator (33F)	11.0 mm



Visit [Edwards.com/gb/EVOQUE](https://www.edwards.com/gb/EVOQUE) for more information

Medical device for professional use. For a listing of indications, contraindications, precautions, warnings, and potential adverse events, please refer to the Instructions for Use (consult [eifu.edwards.com](https://www.edwards.com) where applicable).

Edwards, Edwards Lifesciences, the stylized E logo, Edwards EVOQUE, and EVOQUE are trademarks or service marks of Edwards Lifesciences Corporation or its affiliates.

© 2025 Edwards Lifesciences Corporation. All rights reserved. PP--EU-4408 v6.0

Edwards Lifesciences Sàrl • Route de l'Etraz 70, 1260 Nyon, Switzerland • [edwards.com](https://www.edwards.com)

