


# FloTrac Sensor / EV1000 Clinical Platform

## Setup guide

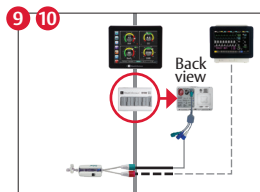
1. Connect the power adapter and ethernet cable for both EV1000 monitor and databox. Press the  button on the monitor.
2. When the boot up is complete, enter new patient data (patient ID, gender, age, height, and weight) or continue with same patient. If entering new patient data, use the touch screen to select and enter values. Press **Home** to continue.
3. Connect the FloTrac sensor to the back of the EV1000 databox.
4. Open the FloTrac sensor packaging and inspect contents. Mount the FloTrac sensor onto the EV1000 databox transducer holder or pressure transducer backplate that is secured on an IV pole.
5. To remove air from the IV flush bag, first invert the IV bag. Spike the bag and keep drip chamber upright. Ensure all air has been removed.<sup>1</sup> Insert IV bag into the pressure bag and hang on the IV pole (do not inflate).

<sup>1</sup> If air is not removed from the bag, air may be forced into the patient's vascular system when the solution is exhausted.

6. To prime the FloTrac sensor: with gravity only (with no pressure in pressure bag), flush the FloTrac sensor by pulling the Snap-Tab device. Remove all air bubbles.
7. Replace all caps with non-vented caps and ensure that all connections are tight.



8. Pressurize the IV bag until it reaches 300 mmHG, then fast-flush the sensor per hospital policy and tap on tubing and stopcocks to remove any residual bubbles.
9. Connect the green databox cable to the green capped connector on the FloTrac sensor.
10. Connect the bedside monitor's arterial pressure cable to the red cable connector on the FloTrac sensor.
11. Connect tubing to the arterial catheter per manufacturer's instructions.
12. Level the FloTrac sensor to the phlebostatic axis. **Note: If the FloTrac sensor is not leveled to the phlebostatic axis, faults can occur in cardiac output.**
13. To zero, touch **Clinical Actions** and then touch **Zero & Waveform**. Turn stopcock off to the patient and open to air. Touch **-0-** for arterial channel. Then touch **Home**. Close the FloTrac sensor to atmospheric air.
14. Cardiac output will be displayed and will update every 20 seconds thereafter, or every 5 minutes depending on the interval option selected.
15. Monitor patient in real-time with one of the available screens. Choose parameters to view on screen by touching outside of the parameter globe. Displayed parameters are outlined, whereas the selected parameters are circled with blue fill.
16. Visual targets and alarms can be set by touching inside the parameter globe.



**CAUTION: Federal (United States) law restricts this device to sale by or on the order of a physician. See instructions for use for full prescribing information, including indications, contraindications, warnings, precautions and adverse events.**

Edwards, Edwards Lifesciences, the stylized E logo, EV1000, and FloTrac are trademarks of Edwards Lifesciences Corporation or its affiliates. All other trademarks are the property of their respective owners.

© 2021 Edwards Lifesciences Corporation. All rights reserved. PP--US-1771 v2.0

Edwards Lifesciences • One Edwards Way, Irvine CA 92614 USA • edwards.com

